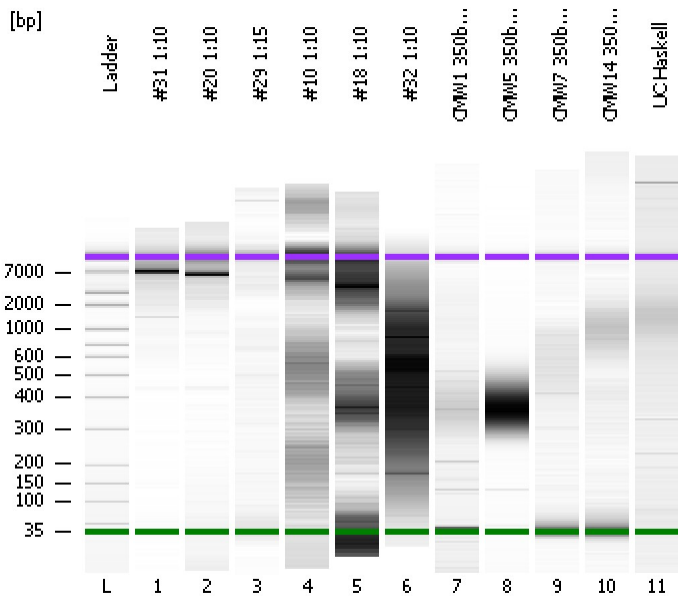


Assay Class: High Sensitivity DNA Assay
Data Path: C:\...ents and Settings\Bioanalyzer\2012-04-17\2012-04-17_006.xad

Created: 4/17/2012 4:13:52 PM
Modified: 4/17/2012 4:59:37 PM

Electrophoresis File Run Summary



Instrument Information:

Instrument Name: DE13701086 Firmware: C.01.069
Serial#: DE13701086 Type: G2938B

Assay Information:

Assay Origin Path: C:\Program Files\Agilent\2100 bioanalyzer\2100 expert\assays\dsDNA\High Sensitivity DNA.xsy
Assay Class: High Sensitivity DNA Assay
Version: 1.03
Assay Comments: Copyright © 2003-2010 Agilent Technologies

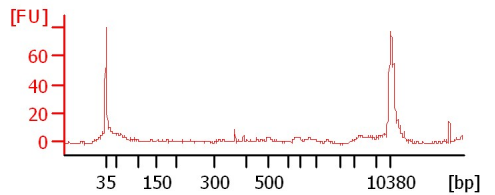
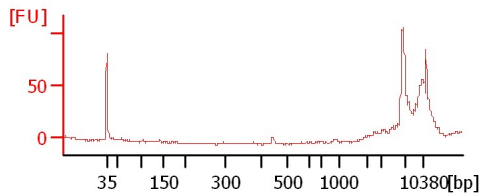
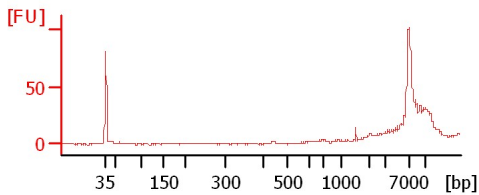
Chip Information:

Chip Lot #:
Reagent Kit Lot #:
Chip Comments:

#31 1:10

#20 1:10

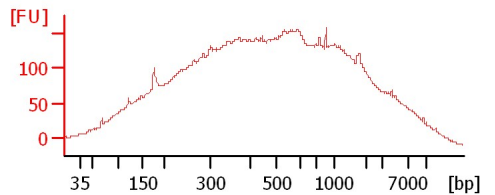
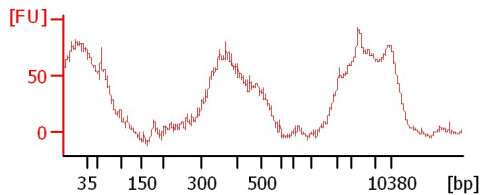
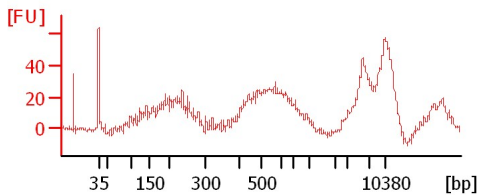
#29 1:15



#10 1:10

#18 1:10

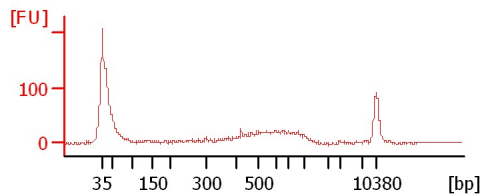
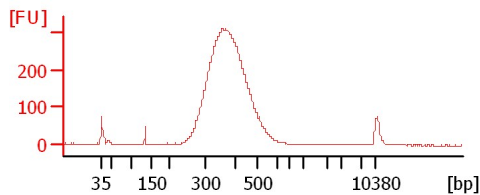
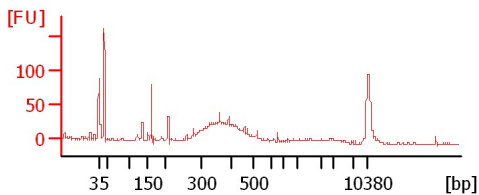
#32 1:10



CMW1 350bp Lib redo

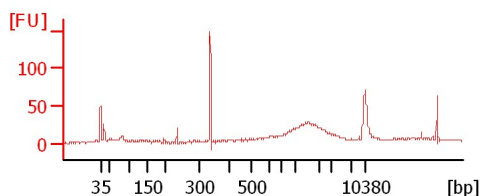
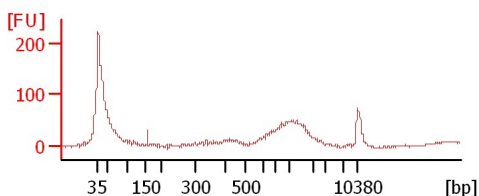
CMW5 350bp Lib redo

CMW7 350bp 1:10 Soni



CMW14 350bp 1:10 Soni

UC Haskell



Assay Class: High Sensitivity DNA Assay
 Data Path: C:\...ents and Settings\Bioanalyzer\2012-04-17\2012-04-17_006.xad

Created: 4/17/2012 4:13:52 PM
 Modified: 4/17/2012 4:59:37 PM

Electrophoresis File Run Summary (Chip Summary)

Sample Name	Sample Comment	Rest. Digest	Status	Observation	Result Label	Result Color
#31 1:10		<input type="checkbox"/>	✓			
#20 1:10		<input type="checkbox"/>	✓			
#29 1:15		<input type="checkbox"/>	✓			
#10 1:10		<input type="checkbox"/>	✓			
#18 1:10		<input type="checkbox"/>	✓			
#32 1:10		<input type="checkbox"/>	✓			
CMW1 350bp Lib redo		<input type="checkbox"/>	✓			
CMW5 350bp Lib redo		<input type="checkbox"/>	✓			
CMW7 350bp 1:10 Soni		<input type="checkbox"/>	✓			
CMW14 350bp 1:10 Soni		<input type="checkbox"/>	✓			
UC Haskell		<input type="checkbox"/>	✓			
Ladder		<input type="checkbox"/>	✓			

Chip Lot #

Reagent Kit Lot #

Chip Comments :

Assay Class: High Sensitivity DNA Assay
Data Path: C:\...ents and Settings\Bioanalyzer\2012-04-17\2012-04-17_006.xad

Created: 4/17/2012 4:13:52 PM
Modified: 4/17/2012 4:59:37 PM

Electrophoresis Assay Details

General Analysis Settings

Number of Available Sample and Ladder Wells (Max.) : 12
Minimum Visible Range [s] : 32
Maximum Visible Range [s] : 138
Start Analysis Time Range [s] : 33
End Analysis Time Range [s] : 137.5
Ladder Concentration [pg/μl] : 1950
Uses Standard Area for Ladder Fragments
Lower Marker Concentration [pg/μl] : 125
Upper Marker Concentration [pg/μl] : 75
Used Upper Marker for Quantitation
Standard Curve Fit is Point to Point
Show Data Aligned to Lower and Upper Marker

Integrator Settings

Integration Start Time [s] : 33.05
Integration End Time [s] : 137
Slope Threshold : 0.8
Height Threshold [FU] : 5
Area Threshold : 0.1
Width Threshold [s] : 0.6
Baseline Plateau [s] : 0.5

Filter Settings

Filter Width [s] : 0.5
Polynomial Order : 4

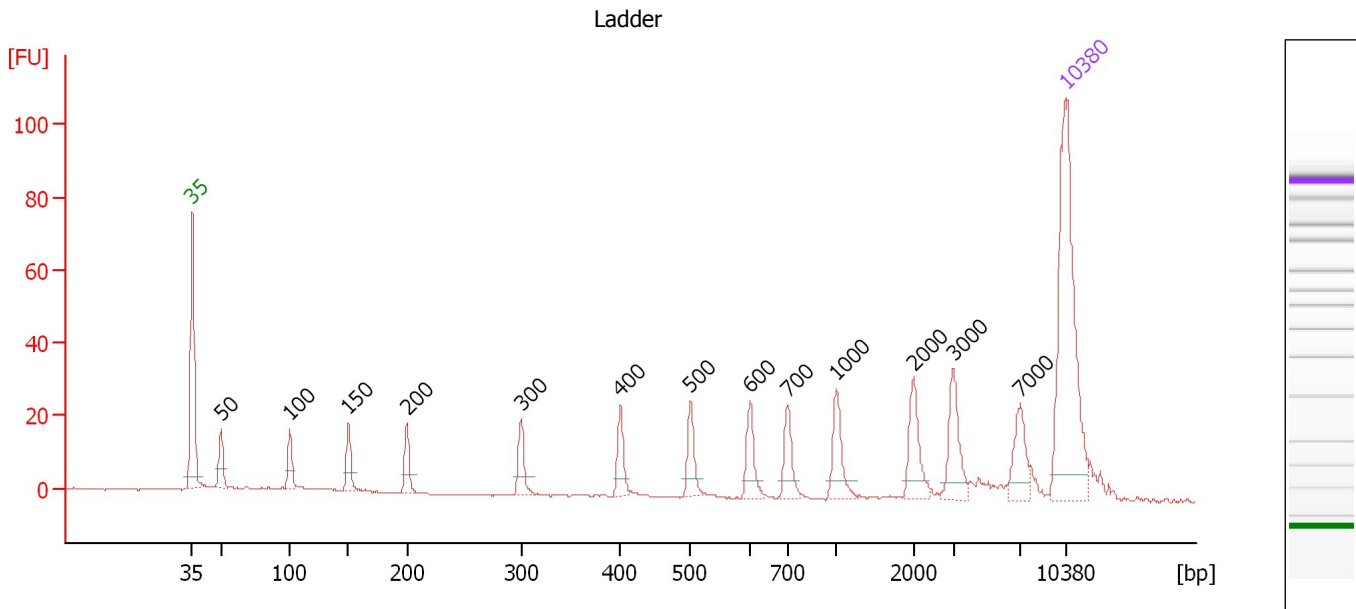
Ladder

Ladder Peak	Size	Area
1	35	160
2	50	210
3	100	208
4	150	221
5	200	242
6	300	270
7	400	305
8	500	306
9	600	336
10	700	321
11	1000	366
12	2000	413
13	3000	411
14	7000	400
15	10380	214

Assay Class: High Sensitivity DNA Assay
 Data Path: C:\...ents and Settings\Bioanalyzer\2012-04-17\2012-04-17_006.xad

Created: 4/17/2012 4:13:52 PM
 Modified: 4/17/2012 4:59:37 PM

Electropherogram Summary



Overall Results for Ladder

Noise: 0.2

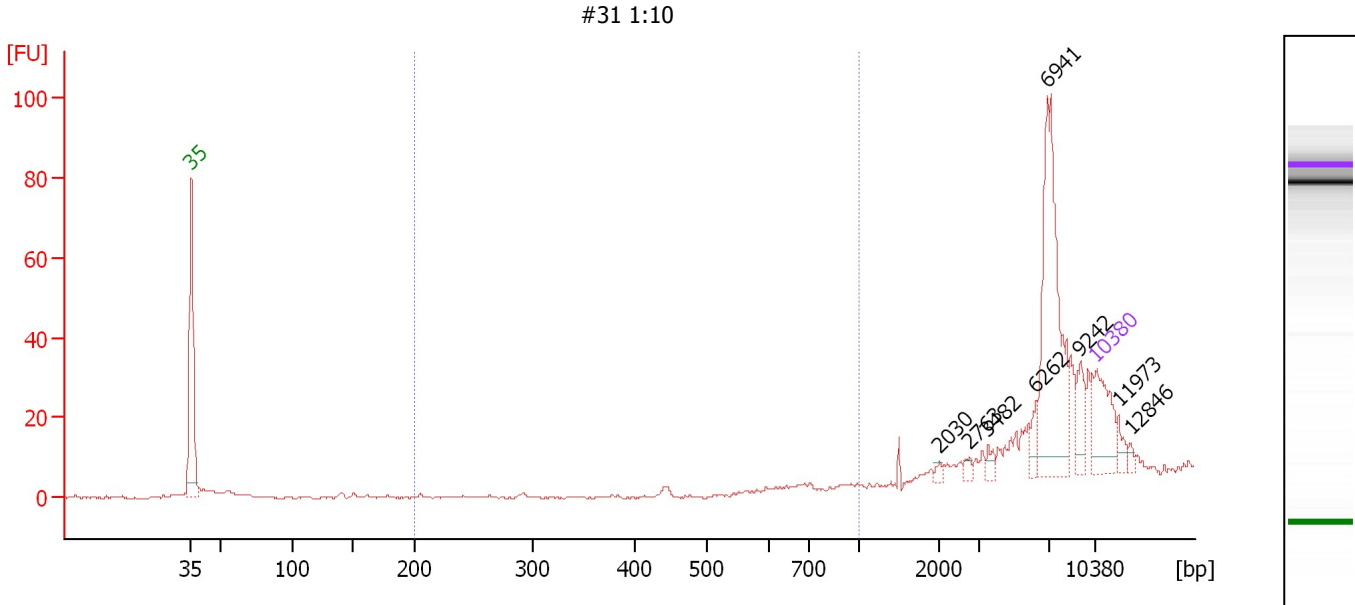
Peak table for Ladder

Peak	Size [bp]	Conc. [pg/μl]	Molarity [pmol/l]	Observations
1	35	125.00	5,411.3	Lower Marker
2	50	150.00	4,545.5	Ladder Peak
3	100	150.00	2,272.7	Ladder Peak
4	150	150.00	1,515.2	Ladder Peak
5	200	150.00	1,136.4	Ladder Peak
6	300	150.00	757.6	Ladder Peak
7	400	150.00	568.2	Ladder Peak
8	500	150.00	454.5	Ladder Peak
9	600	150.00	378.8	Ladder Peak
10	700	150.00	324.7	Ladder Peak
11	1,000	150.00	227.3	Ladder Peak
12	2,000	150.00	113.6	Ladder Peak
13	3,000	150.00	75.8	Ladder Peak
14	7,000	150.00	32.5	Ladder Peak
15	10,380	75.00	10.9	Upper Marker

Assay Class: High Sensitivity DNA Assay
 Data Path: C:\...ents and Settings\Bioanalyzer\2012-04-17\2012-04-17_006.xad

Created: 4/17/2012 4:13:52 PM
 Modified: 4/17/2012 4:59:37 PM

Electropherogram Summary Continued ...



Overall Results for sample 1 : #31 1:10

Number of peaks found: 8 Corr. Area 1: 0.0
 Noise: 0.3

Peak table for sample 1 : #31 1:10

Peak	Size [bp]	Conc. [pg/μl]	Molarity [pmol/l]	Observations
1	35	125.00	5,411.3	Lower Marker
2	2,030	6.54	4.9	
3	2,763	7.66	4.2	
4	3,482	10.70	4.7	
5	6,262	16.63	4.0	
6	6,941	263.66	57.6	
7	9,242	35.73	5.9	
8	10,380	75.00	10.9	Upper Marker
9	11,973	0.00	0.0	
10	12,846	0.00	0.0	

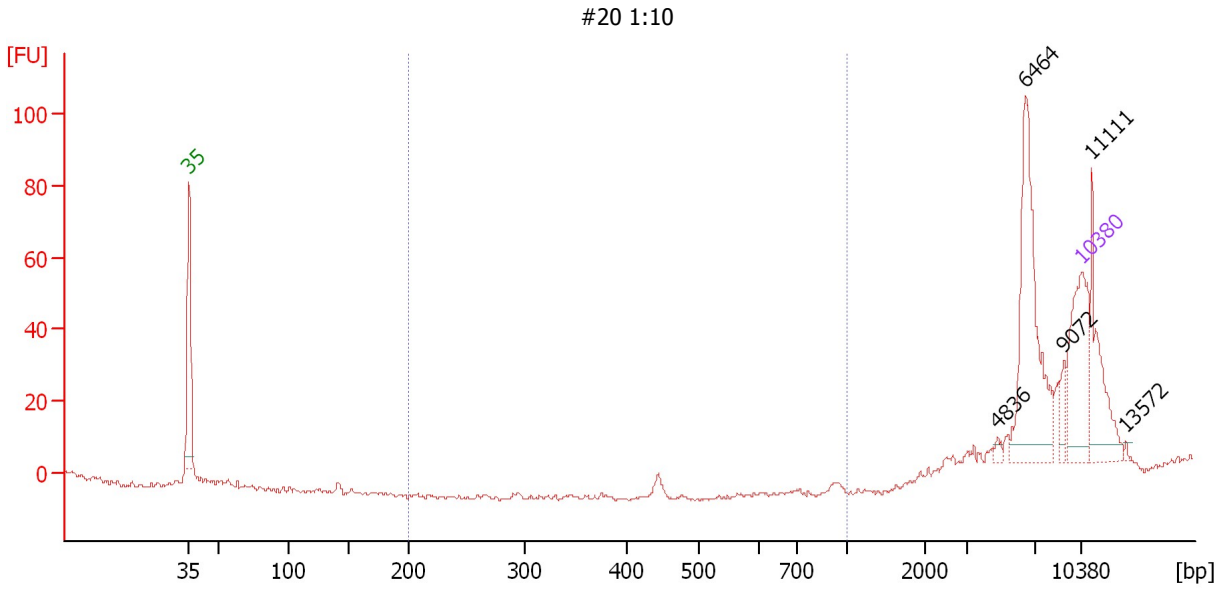
Region table for sample 1 : #31 1:10

From [bp]	Molarity [pmol/l]	Average Size [bp]	Conc. [pg/μl]	To [bp]	Corr. Area	% of Total	Size distribution in CV [%]	Color
200	0.0	0	0.00	1,000	0.0	0	0.0	Blue

Assay Class: High Sensitivity DNA Assay
 Data Path: C:\...ents and Settings\Bioanalyzer\2012-04-17\2012-04-17_006.xad

Created: 4/17/2012 4:13:52 PM
 Modified: 4/17/2012 4:59:37 PM

Electropherogram Summary Continued ...



Overall Results for sample 2 : #20 1:10

Number of peaks found: 5 Corr. Area 1: 0.0
 Noise: 0.6

Peak table for sample 2 : #20 1:10

Peak	Size [bp]	Conc. [pg/μl]	Molarity [pmol/l]	Observations
1	35	125.00	5,411.3	Lower Marker
2	4,836	4.11	1.3	
3	6,464	151.59	35.5	
4	9,072	13.37	2.2	
5	10,380	75.00	10.9	Upper Marker
6	11,111	0.00	0.0	
7	13,572	0.00	0.0	

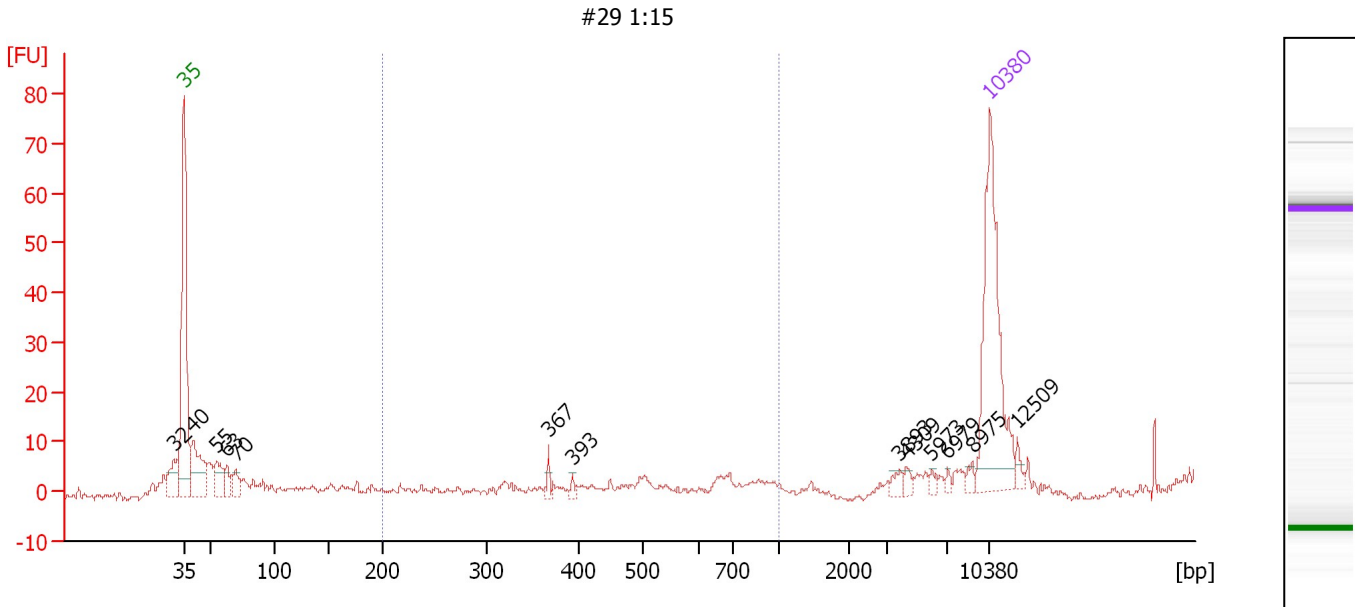
Region table for sample 2 : #20 1:10

From [bp]	Molarity [pmol/l]	Average Size [bp]	Conc. [pg/μl]	To [bp]	Corr. Area	% of Total	Size distribution in CV [%]	Color
200	0.0	0	0.00	1,000	0.0	0	0.0	Blue

Assay Class: High Sensitivity DNA Assay
 Data Path: C:\...ents and Settings\Bioanalyzer\2012-04-17\2012-04-17_006.xad

Created: 4/17/2012 4:13:52 PM
 Modified: 4/17/2012 4:59:37 PM

Electropherogram Summary Continued ...



Overall Results for sample 3 : #29 1:15

Number of peaks found: 13 Corr. Area 1: 19.0
 Noise: 0.6

Peak table for sample 3 : #29 1:15

Peak	Size [bp]	Conc. [pg/μl]	Molarity [pmol/l]	Observations
1	32	0.00	0.0	
2	35	125.00	5,411.3	Lower Marker
3	40	47.48	1,780.0	
4	55	19.65	540.2	
5	63	11.05	267.2	
6	70	11.09	240.8	
7	367	4.07	16.8	
8	393	2.48	9.6	
9	3,893	3.64	1.4	
10	4,309	2.88	1.0	
11	5,973	2.06	0.5	
12	6,979	1.77	0.4	
13	8,975	2.84	0.5	
14	10,380	75.00	10.9	Upper Marker
15	12,509	0.00	0.0	

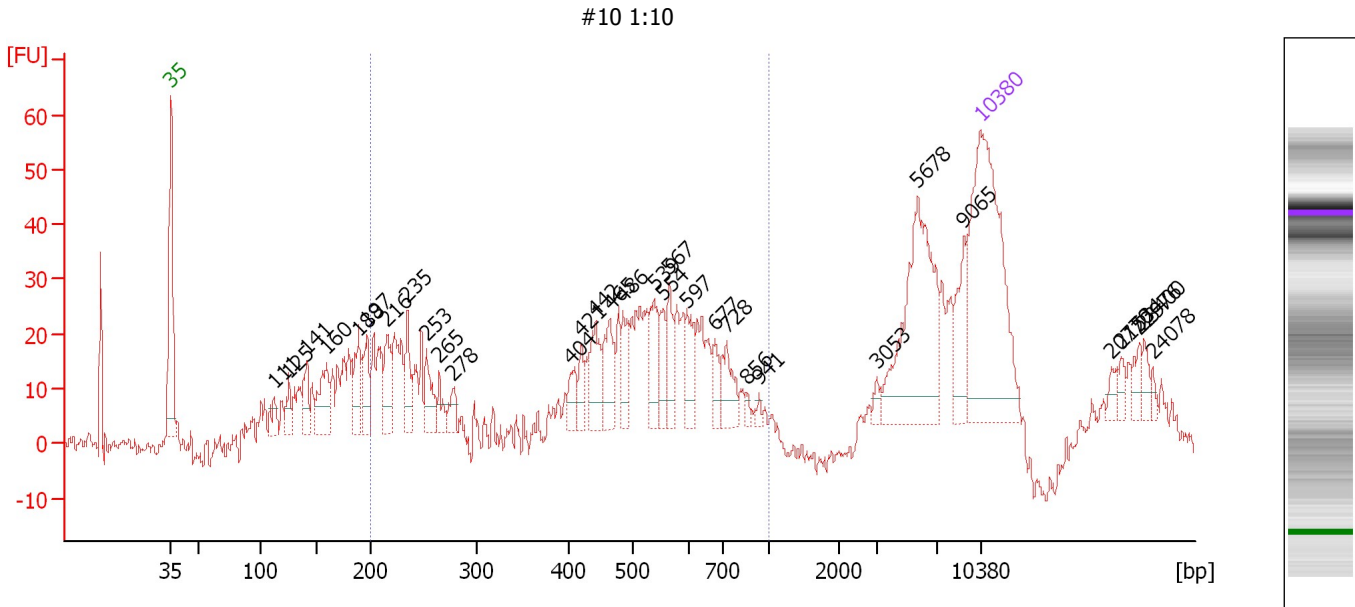
Region table for sample 3 : #29 1:15

From [bp]	Molarity [pmol/l]	Average Size [bp]	Conc. [pg/μl]	To [bp]	Corr. Area	% of Total	Size distribution in CV [%]	Color
200	73.5	515	19.98	1,000	19.0	13	38.8	Blue

Assay Class: High Sensitivity DNA Assay
 Data Path: C:\...ents and Settings\Bioanalyzer\2012-04-17\2012-04-17_006.xad

Created: 4/17/2012 4:13:52 PM
 Modified: 4/17/2012 4:59:37 PM

Electropherogram Summary Continued ...



Overall Results for sample 4 : #10 1:10

Number of peaks found: 32 Corr. Area 1: 579.1
 Noise: 1.6

Peak table for sample 4 : #10 1:10

Peak	Size [bp]	Conc. [pg/μl]	Molarity [pmol/l]	Observations
1	35	125.00	5,411.3	Lower Marker
2	111	8.25	112.1	
3	125	8.99	109.3	
4	141	13.77	147.5	
5	160	22.54	214.1	
6	188	18.48	148.5	
7	197	15.85	121.7	
8	216	17.54	123.1	
9	235	14.46	93.2	
10	253	13.48	80.7	
11	265	7.16	40.9	
12	278	6.86	37.4	
13	404	8.16	30.6	
14	421	8.42	30.3	
15	442	16.25	55.7	
16	465	17.88	58.3	
17	486	13.11	40.9	
18	539	16.10	45.3	
19	554	10.33	28.2	
20	567	12.54	33.5	
21	597	12.59	32.0	
22	677	7.31	16.4	
23	728	13.61	28.3	
24	856	2.02	3.6	
25	941	1.73	2.8	
26	3,053	2.68	1.3	

Assay Class: High Sensitivity DNA Assay
 Data Path: C:\...ents and Settings\Bioanalyzer\2012-04-17\2012-04-17_006.xad


Created: 4/17/2012 4:13:52 PM
 Modified: 4/17/2012 4:59:37 PM

Electropherogram Summary Continued ...

... Peak table for sample 4 : #10 1:10

Peak	Size [bp]	Conc. [pg/μl]	Molarity [pmol/l]	Observations
27	5,678	61.07	16.3	
28	9,065	14.62	2.4	
29	10,380	75.00	10.9	Upper Marker
30	20,770	0.00	0.0	
31	21,534	0.00	0.0	
32	22,976	0.00	0.0	
33	23,400	0.00	0.0	
34	24,078	0.00	0.0	

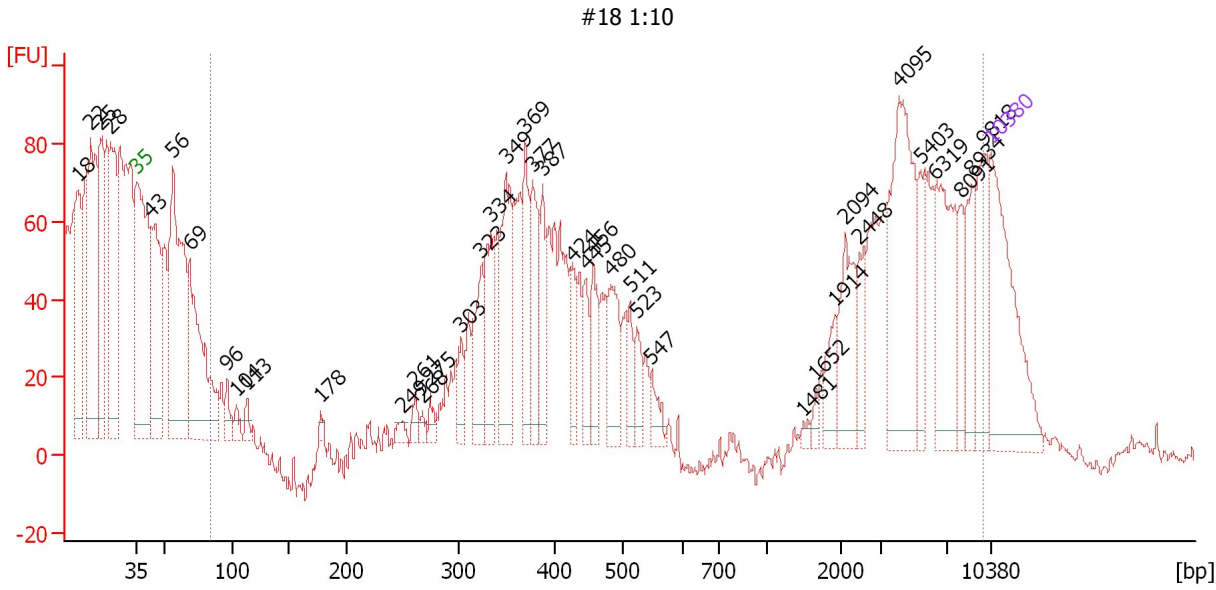
Region table for sample 4 : #10 1:10

From [bp]	Molarity [pmol/l]	Average Size [bp]	Conc. [pg/μl]	To [bp]	Corr. Area	% of Total	Size distribution in CV [%]	Color
200	1,732.7	479	420.49	1,000	579.1	54	36.6	

Assay Class: High Sensitivity DNA Assay
 Data Path: C:\...ents and Settings\Bioanalyzer\2012-04-17\2012-04-17_006.xad

Created: 4/17/2012 4:13:52 PM
 Modified: 4/17/2012 4:59:37 PM

Electropherogram Summary Continued ...



Overall Results for sample 5 : #18 1:10

Number of peaks found: 40 Corr. Area 1: 916.5
 Noise: 3.1

Peak table for sample 5 : #18 1:10

Peak	Size [bp]	Conc. [pg/μl]	Molarity [pmol/l]	Observations
1	18	0.00	0.0	
2	22	0.00	0.0	
3	25	0.00	0.0	
4	28	0.00	0.0	
5	35	125.00	5,411.3	Lower Marker
6	43	127.15	4,485.9	
7	56	210.58	5,697.4	
8	69	149.37	3,295.5	
9	96	14.44	227.0	
10	104	9.24	135.1	
11	113	9.58	128.0	
12	178	4.58	39.1	
13	249	6.11	37.1	
14	261	7.99	46.3	
15	268	4.61	26.0	
16	275	7.39	40.7	
17	303	18.11	90.6	
18	323	42.04	197.1	
19	334	42.40	192.6	
20	349	71.27	309.4	
21	369	44.02	180.9	
22	377	47.61	191.3	
23	387	31.28	122.5	
24	424	22.54	80.5	
25	445	20.87	71.1	
26	456	27.33	90.9	

Assay Class: High Sensitivity DNA Assay
 Data Path: C:\...ents and Settings\Bioanalyzer\2012-04-17\2012-04-17_006.xad


Created: 4/17/2012 4:13:52 PM
 Modified: 4/17/2012 4:59:37 PM

Electropherogram Summary Continued ...

... Peak table for sample 5 : #18 1:10

Peak	Size [bp]	Conc. [pg/µl]	Molarity [pmol/l]	Observations
27	480	37.90	119.5	
28	511	14.84	44.0	
29	523	16.01	46.4	
30	547	11.90	33.0	
31	1,481	3.07	3.1	
32	1,652	3.62	3.3	
33	1,914	14.97	11.8	
34	2,094	36.60	26.5	
35	2,448	17.12	10.6	
36	4,095	94.43	34.9	
37	5,403	19.13	5.4	
38	6,319	58.90	14.1	
39	8,091	16.17	3.0	
40	8,934	24.24	4.1	
41	9,818	34.75	5.4	
42	10,380	75.00	10.9	Upper Marker

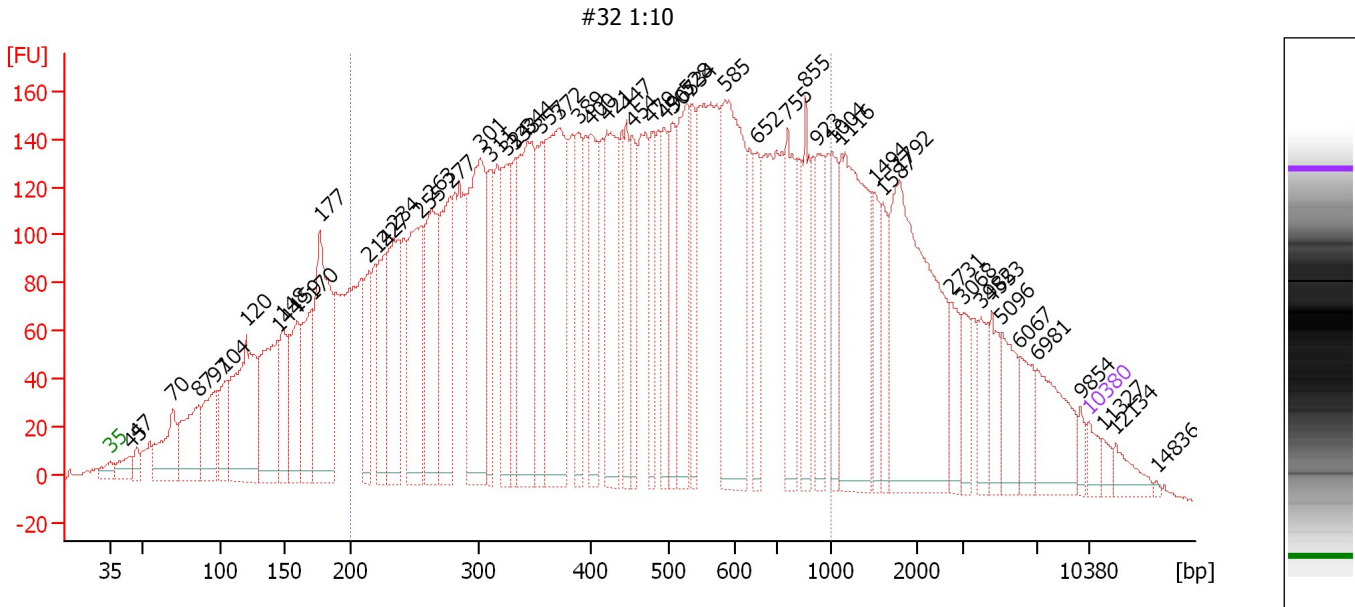
Region table for sample 5 : #18 1:10

From [bp]	Molarity [pmol/l]	Average Size [bp]	Conc. [pg/µl]	To [bp]	Corr. Area	% of Total	Size distribution in CV [%]	Color
84	864.4	4,090	478.10	9,740	916.5	80	71.4	

Assay Class: High Sensitivity DNA Assay
 Data Path: C:\...ents and Settings\Bioanalyzer\2012-04-17\2012-04-17_006.xad

Created: 4/17/2012 4:13:52 PM
 Modified: 4/17/2012 4:59:37 PM

Electropherogram Summary Continued ...



Overall Results for sample 6 : #32 1:10

Number of peaks found: 56 Corr. Area 1: 7,471.8
 Noise: 0.7

Peak table for sample 6 : #32 1:10

Peak	Size [bp]	Conc. [pg/μl]	Molarity [pmol/l]	Observations
1	35	125.00	5,411.3	Lower Marker
2	45	201.09	6,820.6	
3	47	106.24	3,413.9	
4	70	576.51	12,497.0	
5	87	711.71	12,466.0	
6	97	612.17	9,573.7	
7	104	414.89	6,065.0	
8	120	1,480.07	18,643.7	
9	144	1,099.42	11,550.1	
10	148	569.42	5,834.4	
11	159	630.98	6,019.2	
12	170	736.79	6,559.4	
13	177	1,470.86	12,613.5	
14	214	494.97	3,504.7	
15	227	581.06	3,887.0	
16	234	964.47	6,255.9	
17	255	1,026.24	6,100.9	
18	263	1,028.13	5,927.8	
19	277	912.50	4,984.2	
20	301	1,484.63	7,464.8	
21	311	488.35	2,379.6	
22	324	662.91	3,096.4	
23	333	477.14	2,174.0	
24	344	1,216.73	5,358.3	
25	357	615.27	2,614.7	
26	372	1,503.40	6,117.3	

Assay Class: High Sensitivity DNA Assay
 Data Path: C:\...ents and Settings\Bioanalyzer\2012-04-17\2012-04-17_006.xad


Created: 4/17/2012 4:13:52 PM
 Modified: 4/17/2012 4:59:37 PM

Electropherogram Summary Continued ...

... Peak table for sample 6 : #32 1:10

Peak	Size [bp]	Conc. [pg/µl]	Molarity [pmol/l]	Observations
27	389	480.95	1,872.5	
28	400	697.13	2,638.7	
29	421	917.64	3,299.3	
30	447	419.87	1,424.4	
31	454	408.84	1,364.1	
32	479	407.42	1,289.7	
33	496	404.94	1,237.8	
34	507	433.79	1,296.6	
35	528	745.94	2,138.8	
36	534	407.45	1,156.1	
37	585	1,428.67	3,700.2	
38	652	347.66	808.2	
39	755	536.64	1,077.1	
40	855	420.31	744.9	
41	923	413.48	679.0	
42	1,004	331.59	500.2	
43	1,116	1,171.14	1,590.0	
44	1,494	214.96	218.0	
45	1,587	233.84	223.2	
46	1,792	1,472.32	1,245.1	
47	2,731	193.52	107.4	
48	3,068	149.41	73.8	
49	3,982	168.75	64.2	
50	4,553	178.40	59.4	
51	5,096	230.89	68.6	
52	6,067	190.90	47.7	
53	6,981	390.15	84.7	
54	9,854	48.96	7.5	
55	10,380	75.00	10.9	Upper Marker
56	11,327	0.00	0.0	
57	12,134	0.00	0.0	
58	14,836	0.00	0.0	

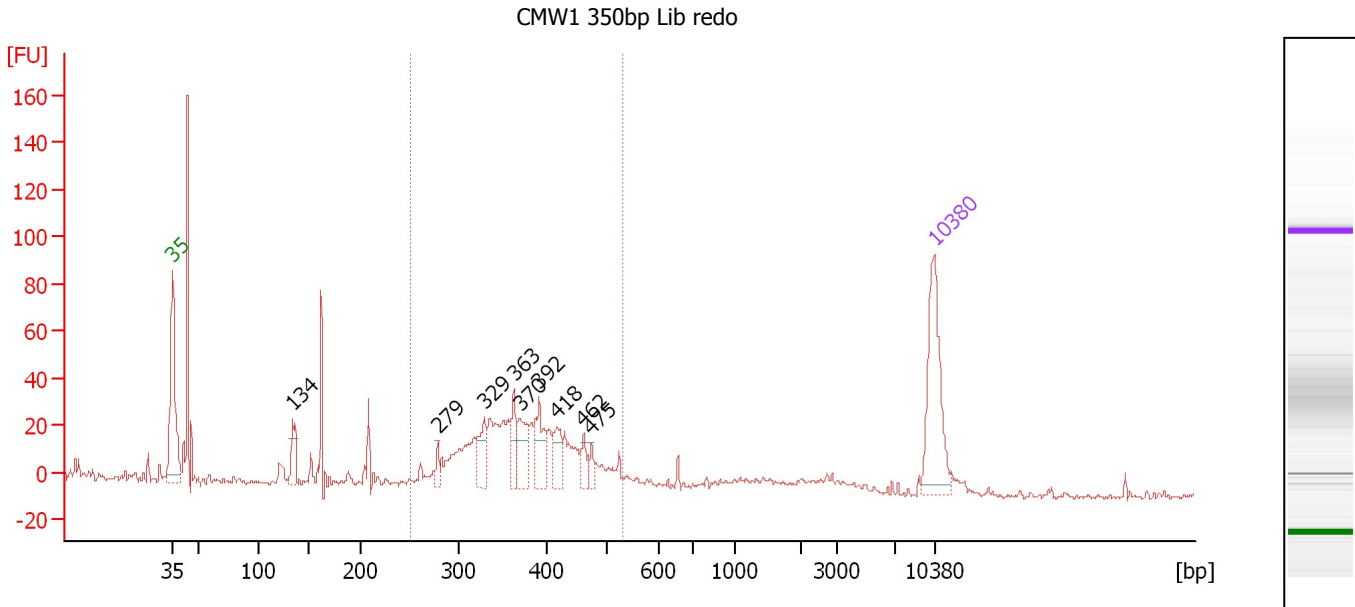
Region table for sample 6 : #32 1:10

From [bp]	Molarity [pmol/l]	Average Size [bp]	Conc. [pg/µl]	To [bp]	Corr. Area	% of Total	Size distribution in CV [%]	Color
200	118,226.5	467	28,798.93	1,000	7,471.8	67	40.5	

Assay Class: High Sensitivity DNA Assay
 Data Path: C:\...ents and Settings\Bioanalyzer\2012-04-17\2012-04-17_006.xad

Created: 4/17/2012 4:13:52 PM
 Modified: 4/17/2012 4:59:37 PM

Electropherogram Summary Continued ...



Setpoint Deviations for sample 7 : CMW1 350bp Lib redo

Height Threshold [FU] : 20

Overall Results for sample 7 : CMW1 350bp Lib redo

Number of peaks found: 9 Corr. Area 1: 359.5
 Noise: 1.0

Peak table for sample 7 : CMW1 350bp Lib redo

Peak	Size [bp]	Conc. [pg/μl]	Molarity [pmol/l]	Observations
1	35	125.00	5,411.3	Lower Marker
2	134	32.15	363.2	
3	279	11.78	64.0	
4	329	31.40	144.6	
5	363	26.85	112.1	
6	370	33.03	135.4	
7	392	35.41	136.9	
8	418	25.00	90.5	
9	462	13.38	43.9	
10	475	10.97	35.0	
11	10,380	75.00	10.9	Upper Marker

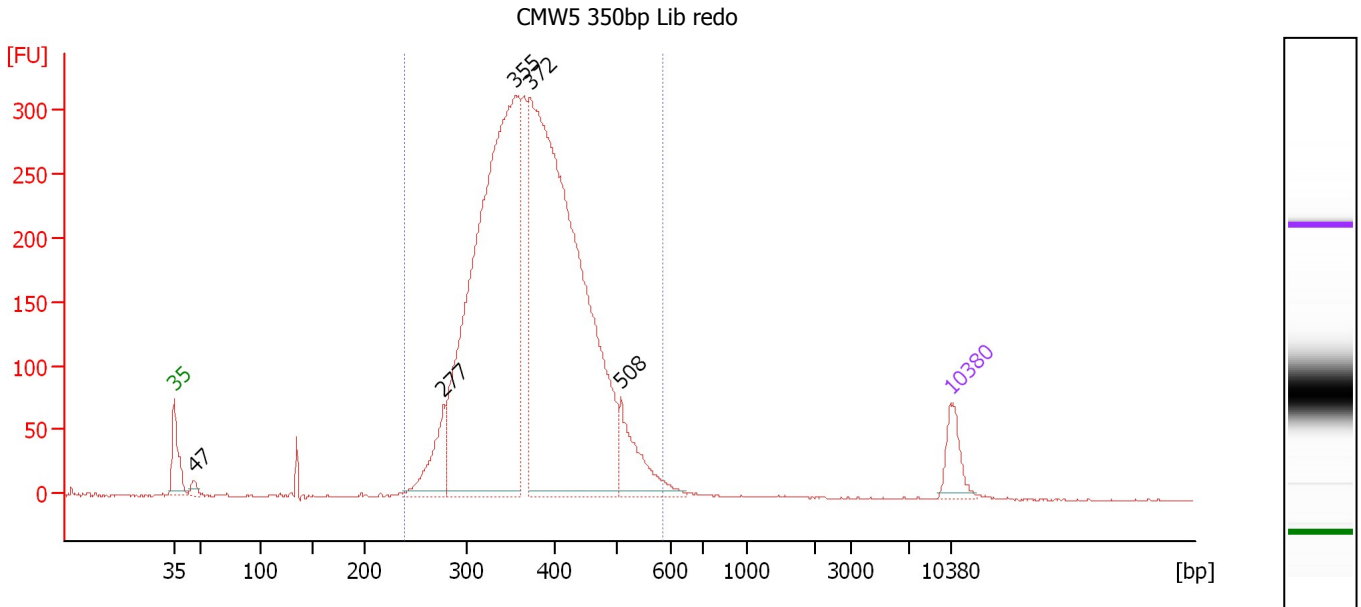
Region table for sample 7 : CMW1 350bp Lib redo

From [bp]	Molarity [pmol/l]	Average Size [bp]	Conc. [pg/μl]	To [bp]	Corr. Area	% of Total	Size distribution in CV [%]	Color
252	1,368.8	378	332.82	532	359.5	68	14.6	Blue

Assay Class: High Sensitivity DNA Assay
 Data Path: C:\...ents and Settings\Bioanalyzer\2012-04-17\2012-04-17_006.xad

Created: 4/17/2012 4:13:52 PM
 Modified: 4/17/2012 4:59:37 PM

Electropherogram Summary Continued ...



Overall Results for sample 8 : CMW5 350bp Lib redo

Number of peaks found: 5 Corr. Area 1: 4,916.4
 Noise: 0.6

Peak table for sample 8 : CMW5 350bp Lib redo

Peak	Size [bp]	Conc. [pg/μl]	Molarity [pmol/l]	Observations
1	35	125.00	5,411.3	Lower Marker
2	47	31.15	1,013.7	
3	277	198.72	1,086.4	
4	355	2,297.68	9,796.2	
5	372	2,504.45	10,208.6	
6	508	205.22	612.3	
7	10,380	75.00	10.9	Upper Marker

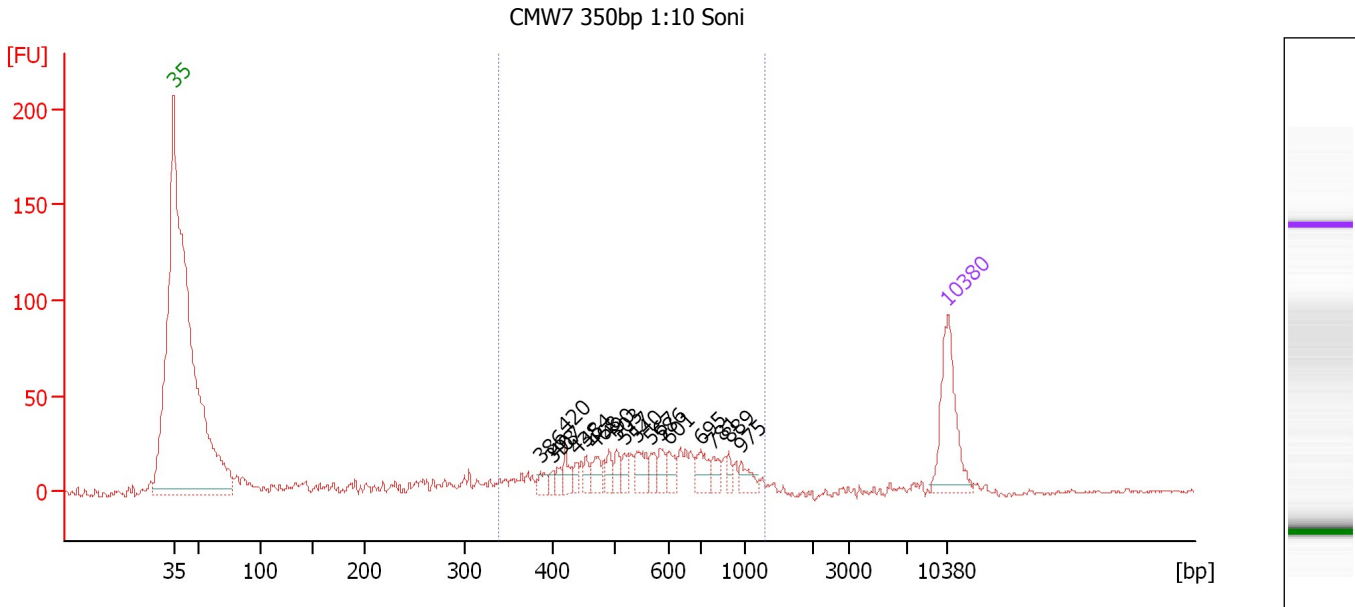
Region table for sample 8 : CMW5 350bp Lib redo

From [bp]	Molarity [pmol/l]	Average Size [bp]	Conc. [pg/μl]	To [bp]	Corr. Area	% of Total	Size distribution in CV [%]	Color
239	22,841.8	378	5,503.25	588	4,916.4	98	16.5	Blue

Assay Class: High Sensitivity DNA Assay
 Data Path: C:\...ents and Settings\Bioanalyzer\2012-04-17\2012-04-17_006.xad

Created: 4/17/2012 4:13:52 PM
 Modified: 4/17/2012 4:59:37 PM

Electropherogram Summary Continued ...



Setpoint Deviations for sample 9 : CMW7 350bp 1:10 Soni

Height Threshold [FU] : 10

Overall Results for sample 9 : CMW7 350bp 1:10 Soni

Number of peaks found: 18 Corr. Area 1: 428.4
 Noise: 0.7

Peak table for sample 9 : CMW7 350bp 1:10 Soni

Peak	Size [bp]	Conc. [pg/µl]	Molarity [pmol/l]	Observations
1	35	125.00	5,411.3	Lower Marker
2	386	11.60	45.5	
3	398	7.54	28.7	
4	407	8.61	32.0	
5	420	17.24	62.2	
6	438	10.03	34.7	
7	454	11.68	39.0	
8	468	18.35	59.4	
9	490	12.87	39.8	
10	503	13.16	39.6	
11	517	12.14	35.6	
12	540	26.52	74.4	
13	567	14.22	38.0	
14	586	15.67	40.5	
15	601	16.89	42.6	
16	695	25.03	54.6	
17	781	13.56	26.3	
18	889	8.81	15.0	
19	975	15.30	23.8	
20	10,380	75.00	10.9	Upper Marker


Assay Class: High Sensitivity DNA Assay
Data Path: C:\...ents and Settings\Bioanalyzer\2012-04-17\2012-04-17_006.xad

Created: 4/17/2012 4:13:52 PM
Modified: 4/17/2012 4:59:37 PM

Electropherogram Summary Continued ...

... Region table for sample 9 :

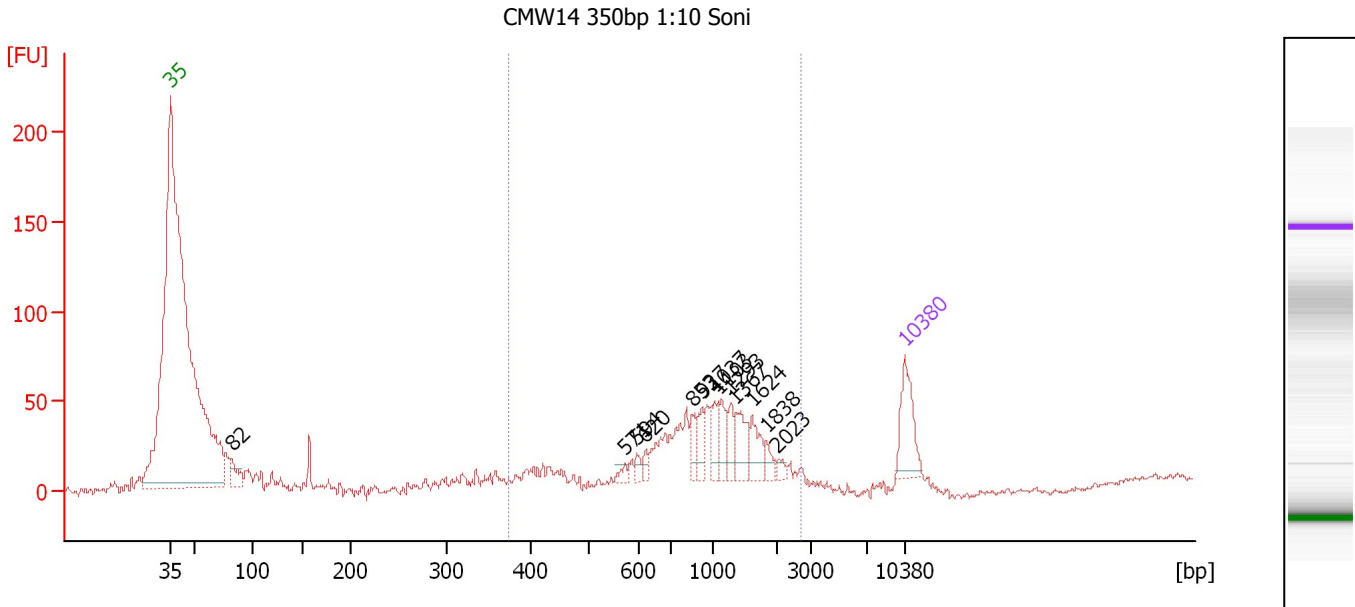
CMW7 350bp 1:10 Soni

From [bp]	Molarity [pmol/l]	Average Size [bp]	Conc. [pg/μl]	To [bp]	Corr. Area	% of Total	Size distribution in CV [%]	Co lor
337	945.4	600	334.21	1,300	428.4	71	31.5	

Assay Class: High Sensitivity DNA Assay
 Data Path: C:\...ents and Settings\Bioanalyzer\2012-04-17\2012-04-17_006.xad

Created: 4/17/2012 4:13:52 PM
 Modified: 4/17/2012 4:59:37 PM

Electropherogram Summary Continued ...



Setpoint Deviations for sample 10 : CMW14 350bp 1:10 Soni

Height Threshold [FU] : 10

Overall Results for sample 10 : CMW14 350bp 1:10 Soni

Number of peaks found: 13 Corr. Area 1: 577.3
 Noise: 1.7

Peak table for sample 10 : CMW14 350bp 1:10 Soni

Peak	Size [bp]	Conc. [pg/µl]	Molarity [pmol/l]	Observations
1	35	125.00	5,411.3	Lower Marker
2	82	56.82	1,048.8	
3	571	11.18	29.7	
4	594	13.62	34.7	
5	620	14.13	34.6	
6	853	33.05	58.7	
7	927	33.80	55.2	
8	1,037	32.91	48.1	
9	1,103	44.39	61.0	
10	1,293	29.24	34.3	
11	1,367	53.46	59.2	
12	1,624	40.69	38.0	
13	1,838	15.82	13.0	
14	2,023	10.09	7.6	
15	10,380	75.00	10.9	Upper Marker

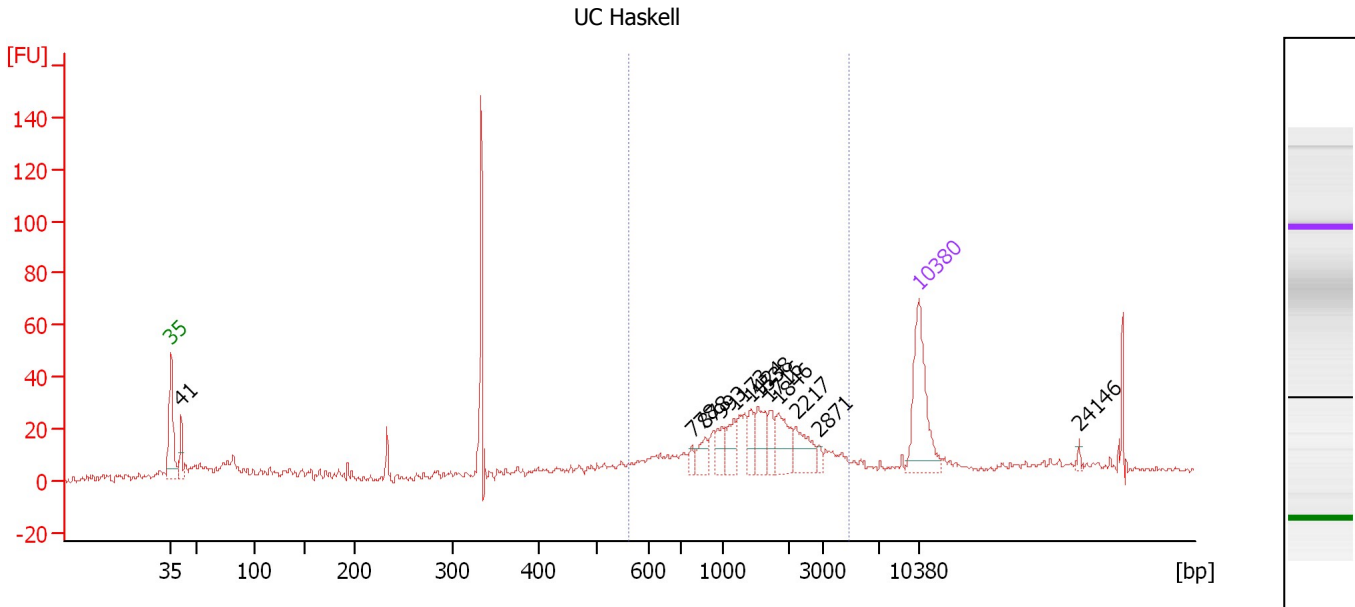
Region table for sample 10 : CMW14 350bp 1:10 Soni

From [bp]	Molarity [pmol/l]	Average Size [bp]	Conc. [pg/µl]	To [bp]	Corr. Area	% of Total	Size distribution in CV [%]	Color
375	1,246.6	1,063	671.54	2,736	577.3	69	45.9	Blue

Assay Class: High Sensitivity DNA Assay
 Data Path: C:\...ents and Settings\Bioanalyzer\2012-04-17\2012-04-17_006.xad

Created: 4/17/2012 4:13:52 PM
 Modified: 4/17/2012 4:59:37 PM

Electropherogram Summary Continued ...



Setpoint Deviations for sample 11 : UC Haskell

Height Threshold [FU] : 10

Overall Results for sample 11 : UC Haskell

Number of peaks found: 12 Corr. Area 1: 277.6
 Noise: 1.2

Peak table for sample 11 : UC Haskell

Peak	Size [bp]	Conc. [pg/µl]	Molarity [pmol/l]	Observations
1	35	125.00	5,411.3	Lower Marker
2	41	35.03	1,289.5	
3	778	8.07	15.7	
4	878	18.19	31.4	
5	993	20.74	31.6	
6	1,173	22.99	29.7	
7	1,424	18.04	19.2	
8	1,538	29.19	28.8	
9	1,716	16.59	14.6	
10	1,846	34.33	28.2	
11	2,217	29.87	20.4	
12	2,871	6.10	3.2	
13	10,380	75.00	10.9	Upper Marker
14	24,146	0.00	0.0	

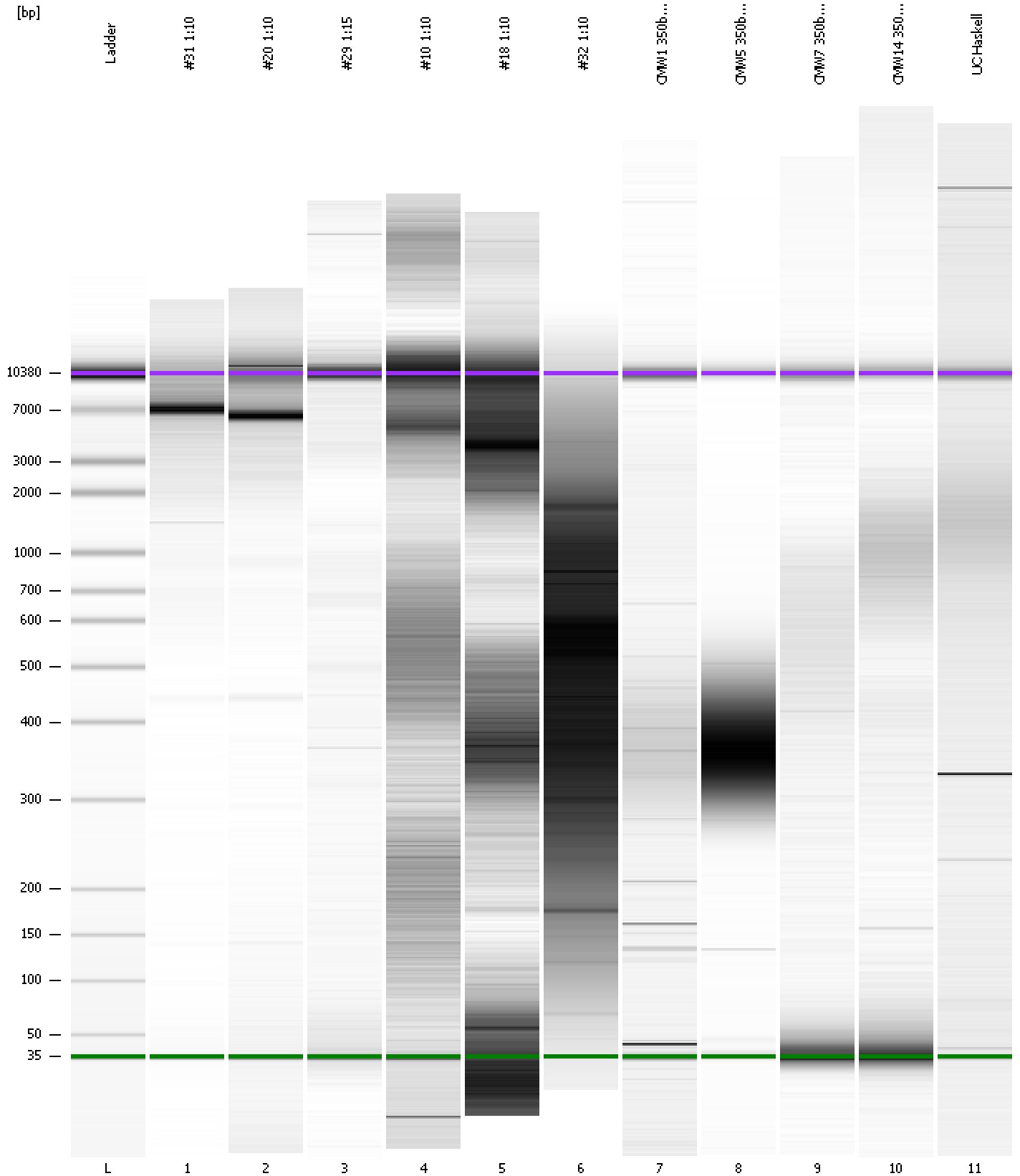
Region table for sample 11 : UC Haskell

From [bp]	Molarity [pmol/l]	Average Size [bp]	Conc. [pg/µl]	To [bp]	Corr. Area	% of Total	Size distribution in CV [%]	Color
561	369.9	1,599	295.82	4,790	277.6	54	51.7	Blue

Assay Class: High Sensitivity DNA Assay
Data Path: C:\...ents and Settings\Bioanalyzer\2012-04-17\2012-04-17_006.xad

Created: 4/17/2012 4:13:52 PM
Modified: 4/17/2012 4:59:37 PM

Gel Image



Assay Class: High Sensitivity DNA Assay
 Data Path: C:\...ents and Settings\Bioanalyzer\2012-04-17\2012-04-17_006.xad

Created: 4/17/2012 4:13:52 PM
 Modified: 4/17/2012 4:59:37 PM

Run Logbook

Description	Number	Source	Category	Sub Category	Time	Time Zone	User	Host
Run ended on port 1 (Number of wells acquired: 12)		Instrument	Run		4/17/2012 4:55:11 PM	(GMT --07:00) Pacific Standard Time	UC Davis	D8XSMGH1
Run started on port 1 (File: C:\Documents and Settings\Bioanalyzer\2012-04-17\2012-04-17_006.xad)		Instrument	Run		4/17/2012 4:13:58 PM	(GMT --07:00) Pacific Standard Time	UC Davis	D8XSMGH1
Product Number : G2938B		Instrument	Run		4/17/2012 4:13:58 PM	(GMT --07:00) Pacific Standard Time	UC Davis	D8XSMGH1
Name :		Instrument	Run		4/17/2012 4:13:58 PM	(GMT --07:00) Pacific Standard Time	UC Davis	D8XSMGH1
Vendor : Agilent Technologies		Instrument	Run		4/17/2012 4:13:58 PM	(GMT --07:00) Pacific Standard Time	UC Davis	D8XSMGH1
Serial# : DE13701086		Instrument	Run		4/17/2012 4:13:58 PM	(GMT --07:00) Pacific Standard Time	UC Davis	D8XSMGH1
Firmware : C.01.069		Instrument	Run		4/17/2012 4:13:58 PM	(GMT --07:00) Pacific Standard Time	UC Davis	D8XSMGH1
Cartridge : Electrode		Instrument	Run		4/17/2012 4:13:58 PM	(GMT --07:00) Pacific Standard Time	UC Davis	D8XSMGH1