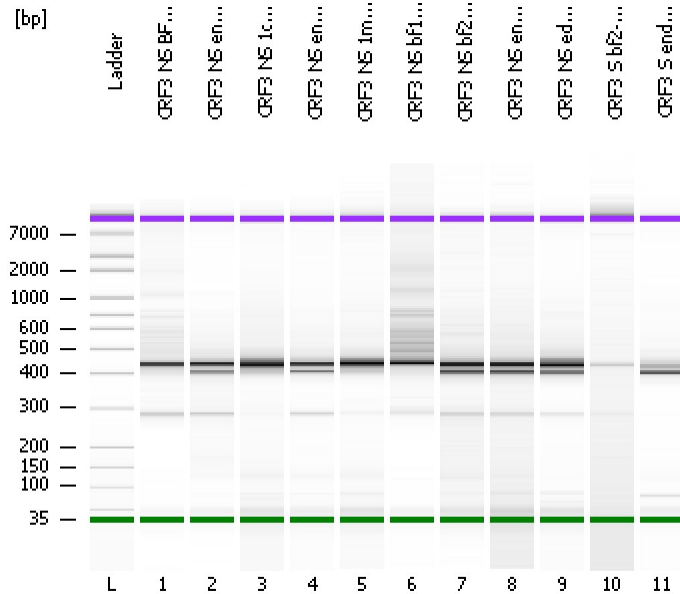


Assay Class: High Sensitivity DNA Assay
Data Path: C:\...ents and Settings\Bioanalyzer\2012-04-17\2012-04-17_003.xad

Created: 4/17/2012 2:07:43 PM
Modified: 4/17/2012 2:49:03 PM

Electrophoresis File Run Summary



Instrument Information:

Instrument Name: DE13701086 Firmware: C.01.069
Serial#: DE13701086 Type: G2938B

Assay Information:

Assay Origin Path: C:\Program Files\Agilent\2100 bioanalyzer\2100 expert\assays\dsDNA\High Sensitivity DNA.xsy
Assay Class: High Sensitivity DNA Assay
Version: 1.03
Assay Comments: Copyright © 2003-2010 Agilent Technologies

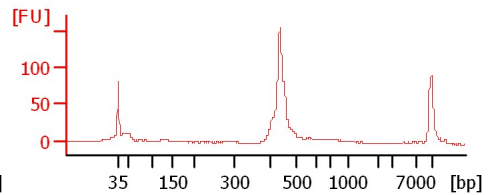
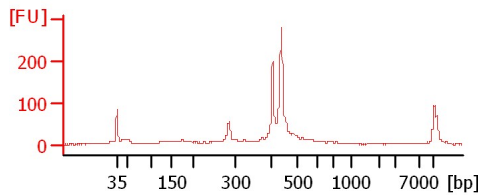
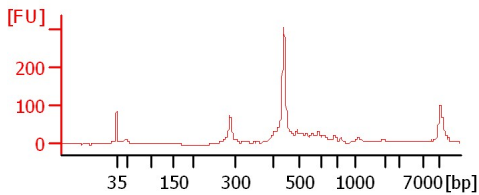
Chip Information:

Chip Lot #:
Reagent Kit Lot #:
Chip Comments:

CRF3 NS BF2-3 T22

CRF3 NS endo1-3 E21

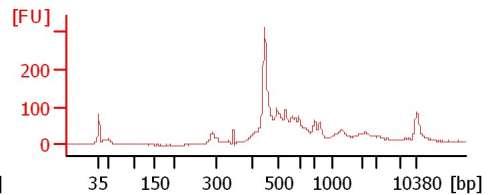
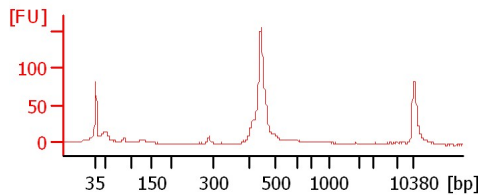
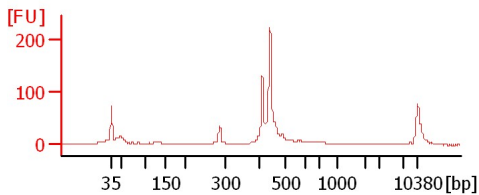
CRF3 NS 1cm-4 T25



CRF3 NS endo2-3 E22

CRF3 NS 1mm-4 T27

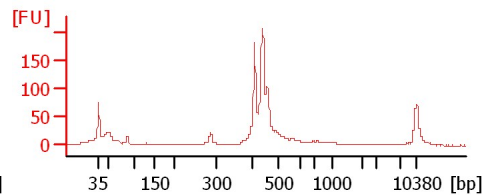
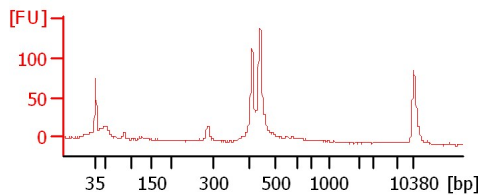
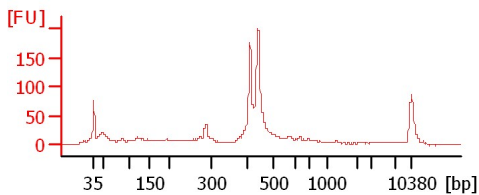
CRF3 NS bf1-4 T29



CRF3 NS bf2-4 T30

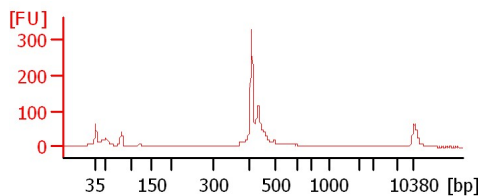
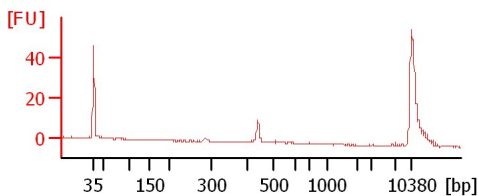
CRF3 NS endo1-4 E29

CRF3 NS endo2-4 E30



CRF3 S bf2-3 T24

CRF3 S endo1-3 T37



Assay Class: High Sensitivity DNA Assay
Data Path: C:\...ents and Settings\Bioanalyzer\2012-04-17\2012-04-17_003.xad

Created: 4/17/2012 2:07:43 PM
Modified: 4/17/2012 2:49:03 PM

Electrophoresis File Run Summary (Chip Summary)

Sample Name	Sample Comment	Rest. Digest	Status	Observation	Result Label	Result Color
CRF3 NS BF2-3 T22		<input type="checkbox"/>	✓			
CRF3 NS endo1-3 E21		<input type="checkbox"/>	✓			
CRF3 NS 1cm-4 T25		<input type="checkbox"/>	✓			
CRF3 NS endo2-3 E22		<input type="checkbox"/>	✓			
CRF3 NS 1mm-4 T27		<input type="checkbox"/>	✓			
CRF3 NS bf1-4 T29		<input type="checkbox"/>	✓			
CRF3 NS bf2-4 T30		<input type="checkbox"/>	✓			
CRF3 NS endo1-4 E29		<input type="checkbox"/>	✓			
CRF3 NS edno2-4 E30		<input type="checkbox"/>	✓			
CRF3 S bf2-3 T24		<input type="checkbox"/>	✓			
CRF3 S endo1-3 T37		<input type="checkbox"/>	✓			
Ladder		<input type="checkbox"/>	✓			

Chip Lot #

Reagent Kit Lot #

Chip Comments :

Assay Class: High Sensitivity DNA Assay
Data Path: C:\...ents and Settings\Bioanalyzer\2012-04-17\2012-04-17_003.xad

Created: 4/17/2012 2:07:43 PM
Modified: 4/17/2012 2:49:03 PM

Electrophoresis Assay Details

General Analysis Settings

Number of Available Sample and Ladder Wells (Max.) : 12
Minimum Visible Range [s] : 32
Maximum Visible Range [s] : 138
Start Analysis Time Range [s] : 33
End Analysis Time Range [s] : 137.5
Ladder Concentration [pg/μl] : 1950
Uses Standard Area for Ladder Fragments
Lower Marker Concentration [pg/μl] : 125
Upper Marker Concentration [pg/μl] : 75
Used Upper Marker for Quantitation
Standard Curve Fit is Point to Point
Show Data Aligned to Lower and Upper Marker

Integrator Settings

Integration Start Time [s] : 33.05
Integration End Time [s] : 137
Slope Threshold : 0.8
Height Threshold [FU] : 30
Area Threshold : 0.1
Width Threshold [s] : 0.6
Baseline Plateau [s] : 0.5

Filter Settings

Filter Width [s] : 0.5
Polynomial Order : 4

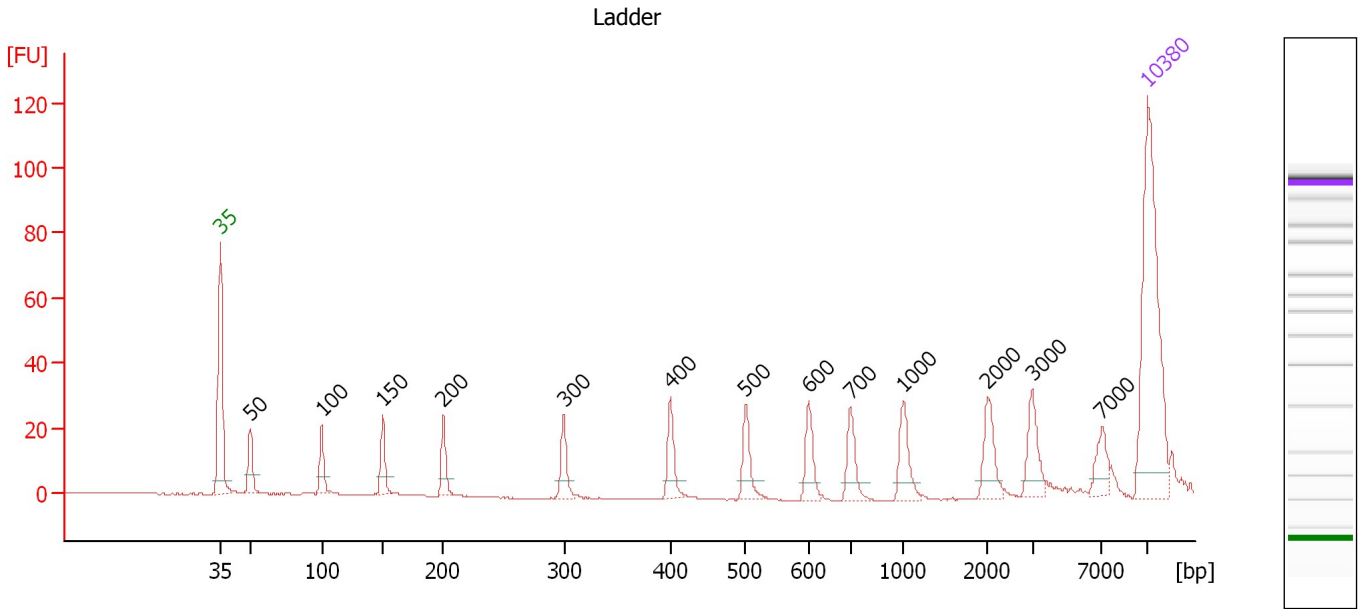
Ladder

Ladder Peak	Size	Area
1	35	160
2	50	210
3	100	208
4	150	221
5	200	242
6	300	270
7	400	305
8	500	306
9	600	336
10	700	321
11	1000	366
12	2000	413
13	3000	411
14	7000	400
15	10380	214

Assay Class: High Sensitivity DNA Assay
 Data Path: C:\...ents and Settings\Bioanalyzer\2012-04-17\2012-04-17_003.xad

Created: 4/17/2012 2:07:43 PM
 Modified: 4/17/2012 2:49:03 PM

Electropherogram Summary



Overall Results for Ladder

Noise: 0.1

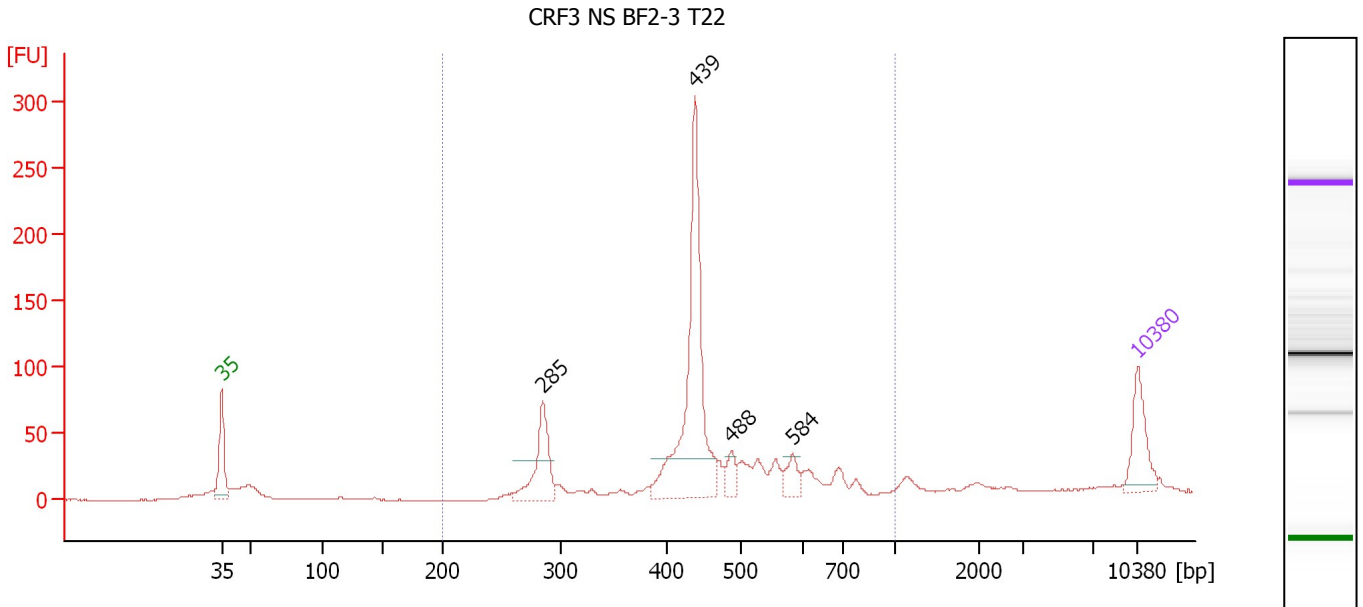
Peak table for Ladder

Peak	Size [bp]	Conc. [pg/μl]	Molarity [pmol/l]	Observations
1	35	125.00	5,411.3	Lower Marker
2	50	150.00	4,545.5	Ladder Peak
3	100	150.00	2,272.7	Ladder Peak
4	150	150.00	1,515.2	Ladder Peak
5	200	150.00	1,136.4	Ladder Peak
6	300	150.00	757.6	Ladder Peak
7	400	150.00	568.2	Ladder Peak
8	500	150.00	454.5	Ladder Peak
9	600	150.00	378.8	Ladder Peak
10	700	150.00	324.7	Ladder Peak
11	1,000	150.00	227.3	Ladder Peak
12	2,000	150.00	113.6	Ladder Peak
13	3,000	150.00	75.8	Ladder Peak
14	7,000	150.00	32.5	Ladder Peak
15	10,380	75.00	10.9	Upper Marker

Assay Class: High Sensitivity DNA Assay
 Data Path: C:\...ents and Settings\Bioanalyzer\2012-04-17\2012-04-17_003.xad

Created: 4/17/2012 2:07:43 PM
 Modified: 4/17/2012 2:49:03 PM

Electropherogram Summary Continued ...



Overall Results for sample 1 : CRF3 NS BF2-3 T22

Number of peaks found: 4 Corr. Area 1: 868.9
 Noise: 0.2

Peak table for sample 1 : CRF3 NS BF2-3 T22

Peak	Size [bp]	Conc. [pg/μl]	Molarity [pmol/l]	Observations
1	35	125.00	5,411.3	Lower Marker
2	285	160.37	853.5	
3	439	514.97	1,777.7	
4	488	37.99	118.0	
5	584	37.49	97.3	
6	10,380	75.00	10.9	Upper Marker

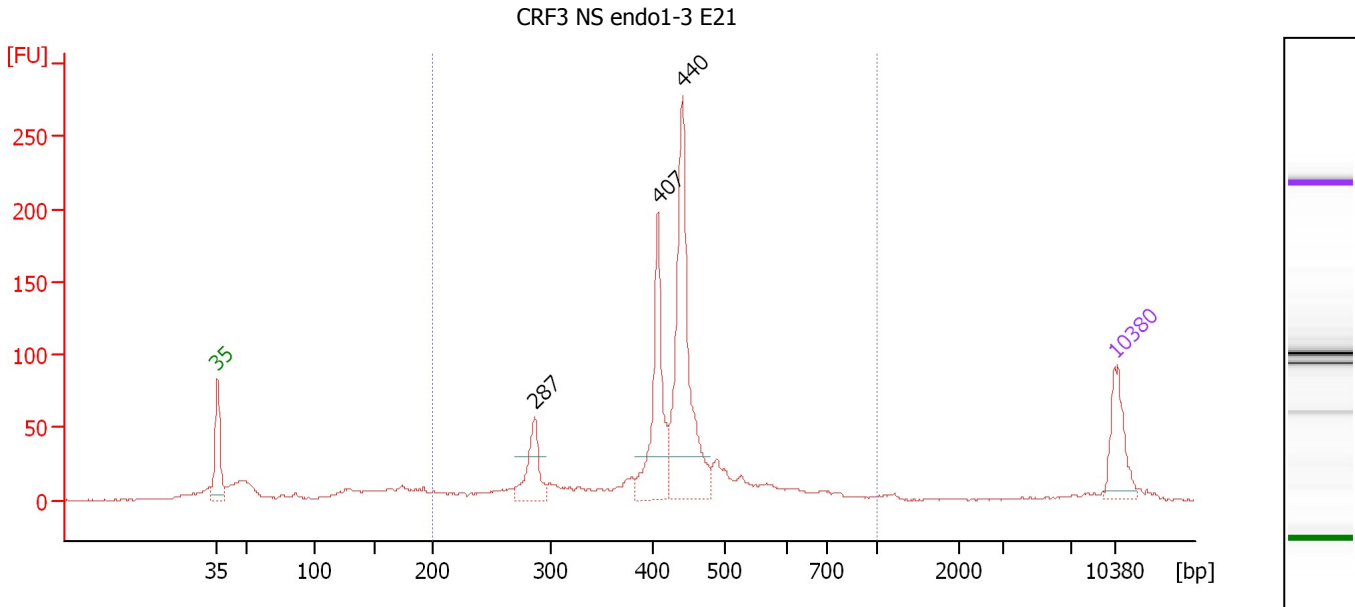
Region table for sample 1 : CRF3 NS BF2-3 T22

From [bp]	Molarity [pmol/l]	Average Size [bp]	Conc. [pg/μl]	To [bp]	Corr. Area	% of Total	Size distribution in CV [%]	Color
200	3,299.5	454	913.07	1,000	868.9	87	22.0	Blue

Assay Class: High Sensitivity DNA Assay
 Data Path: C:\...ents and Settings\Bioanalyzer\2012-04-17\2012-04-17_003.xad

Created: 4/17/2012 2:07:43 PM
 Modified: 4/17/2012 2:49:03 PM

Electropherogram Summary Continued ...



Overall Results for sample 2 : CRF3 NS endo1-3 E21

Number of peaks found: 3 Corr. Area 1: 1,034.1
 Noise: 0.7

Peak table for sample 2 : CRF3 NS endo1-3 E21

Peak	Size [bp]	Conc. [pg/μl]	Molarity [pmol/l]	Observations
1	35	125.00	5,411.3	Lower Marker
2	287	112.37	593.1	
3	407	234.28	872.7	
4	440	434.93	1,496.2	
5	10,380	75.00	10.9	Upper Marker

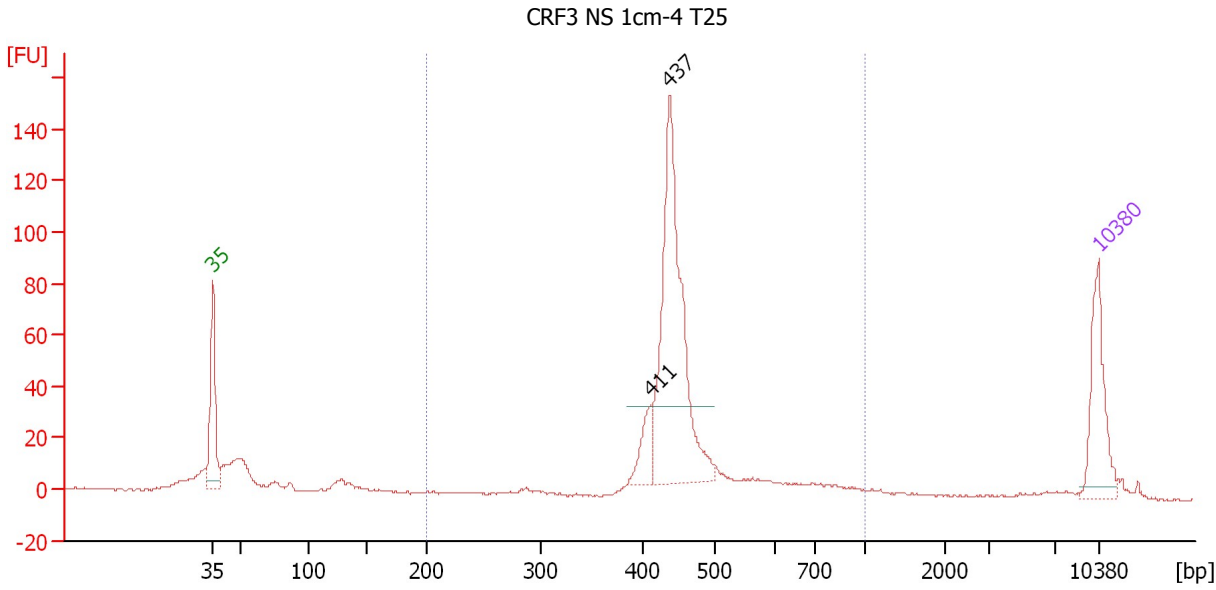
Region table for sample 2 : CRF3 NS endo1-3 E21

From [bp]	Molarity [pmol/l]	Average Size [bp]	Conc. [pg/μl]	To [bp]	Corr. Area	% of Total	Size distribution in CV [%]	Color
200	4,275.7	424	1,106.27	1,000	1,034.1	78	22.7	Blue

Assay Class: High Sensitivity DNA Assay
 Data Path: C:\...ents and Settings\Bioanalyzer\2012-04-17\2012-04-17_003.xad

Created: 4/17/2012 2:07:43 PM
 Modified: 4/17/2012 2:49:03 PM

Electropherogram Summary Continued ...



Overall Results for sample 3 : CRF3 NS 1cm-4 T25

Number of peaks found: 2 Corr. Area 1: 520.9
 Noise: 0.5

Peak table for sample 3 : CRF3 NS 1cm-4 T25

Peak	Size [bp]	Conc. [pg/μl]	Molarity [pmol/l]	Observations
1	35	125.00	5,411.3	Lower Marker
2	411	41.83	154.3	
3	437	367.92	1,274.5	
4	10,380	75.00	10.9	Upper Marker

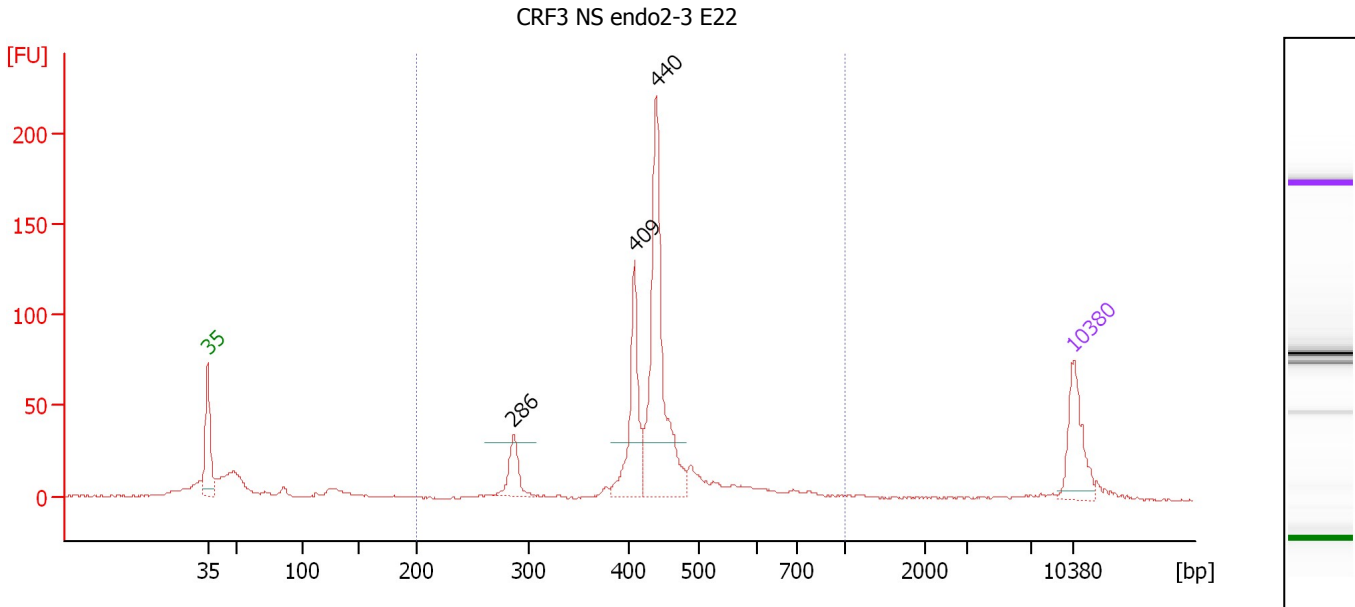
Region table for sample 3 : CRF3 NS 1cm-4 T25

From [bp]	Molarity [pmol/l]	Average Size [bp]	Conc. [pg/μl]	To [bp]	Corr. Area	% of Total	Size distribution in CV [%]	Color
200	1,780.5	471	534.16	1,000	520.9	75	19.9	Blue

Assay Class: High Sensitivity DNA Assay
 Data Path: C:\...ents and Settings\Bioanalyzer\2012-04-17\2012-04-17_003.xad

Created: 4/17/2012 2:07:43 PM
 Modified: 4/17/2012 2:49:03 PM

Electropherogram Summary Continued ...



Overall Results for sample 4 : CRF3 NS endo2-3 E22

Number of peaks found: 3 Corr. Area 1: 628.5
 Noise: 0.3

Peak table for sample 4 : CRF3 NS endo2-3 E22

Peak	Size [bp]	Conc. [pg/μl]	Molarity [pmol/l]	Observations
1	35	125.00	5,411.3	Lower Marker
2	286	66.60	352.4	
3	409	156.99	582.1	
4	440	378.40	1,303.8	
5	10,380	75.00	10.9	Upper Marker

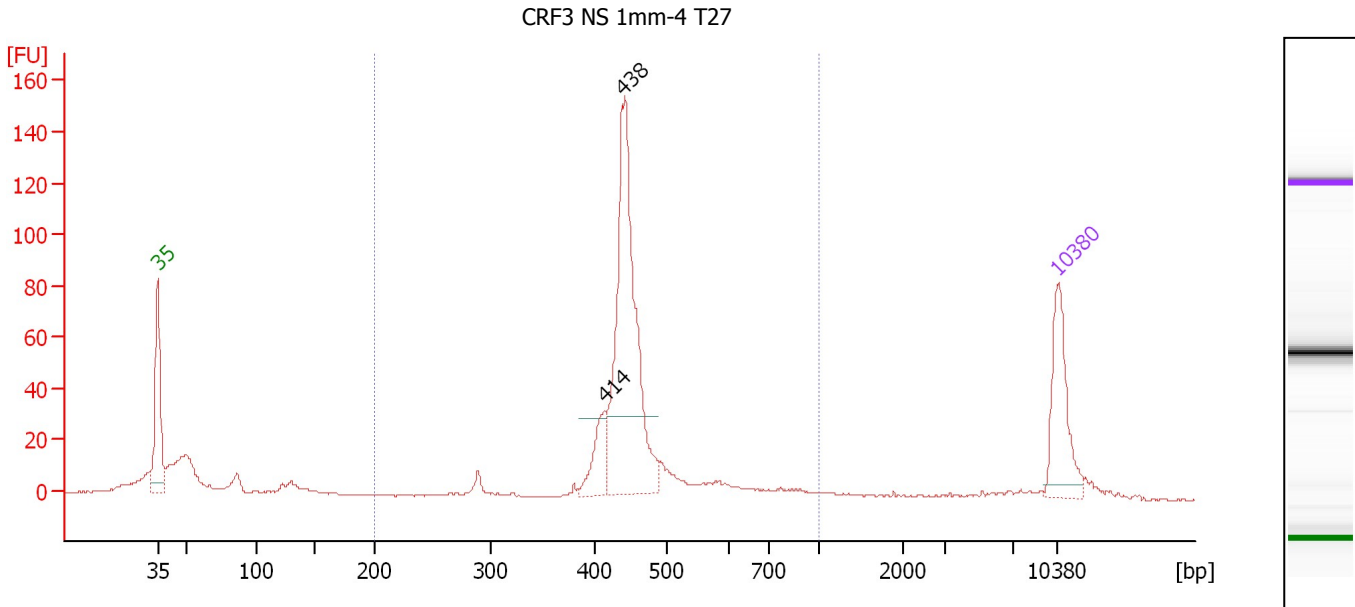
Region table for sample 4 : CRF3 NS endo2-3 E22

From [bp]	Molarity [pmol/l]	Average Size [bp]	Conc. [pg/μl]	To [bp]	Corr. Area	% of Total	Size distribution in CV [%]	Color
200	2,600.6	445	725.66	1,000	628.5	77	20.0	Blue

Assay Class: High Sensitivity DNA Assay
 Data Path: C:\...ents and Settings\Bioanalyzer\2012-04-17\2012-04-17_003.xad

Created: 4/17/2012 2:07:43 PM
 Modified: 4/17/2012 2:49:03 PM

Electropherogram Summary Continued ...



Overall Results for sample 5 : CRF3 NS 1mm-4 T27

Number of peaks found: 2 Corr. Area 1: 478.0
 Noise: 0.3

Peak table for sample 5 : CRF3 NS 1mm-4 T27

Peak	Size [bp]	Conc. [pg/μl]	Molarity [pmol/l]	Observations
1	35	125.00	5,411.3	Lower Marker
2	414	52.93	193.8	
3	438	359.05	1,242.6	
4	10,380	75.00	10.9	Upper Marker

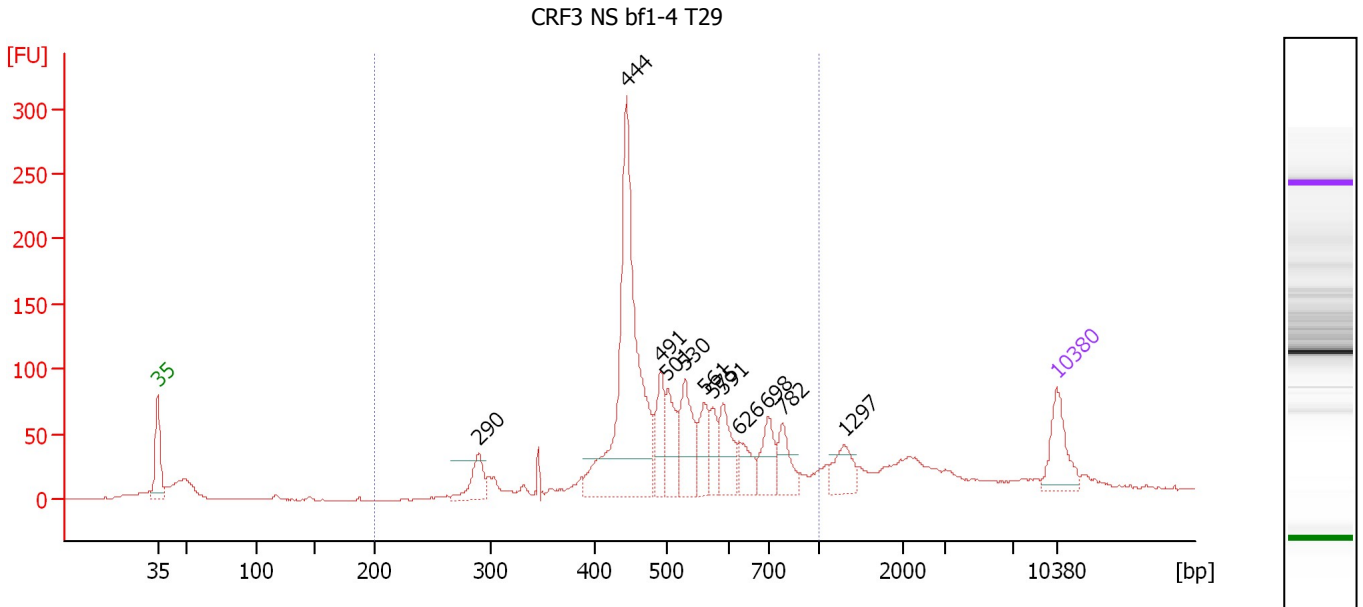
Region table for sample 5 : CRF3 NS 1mm-4 T27

From [bp]	Molarity [pmol/l]	Average Size [bp]	Conc. [pg/μl]	To [bp]	Corr. Area	% of Total	Size distribution in CV [%]	Color
200	1,668.6	463	494.02	1,000	478.0	71	17.8	Blue

Assay Class: High Sensitivity DNA Assay
 Data Path: C:\...ents and Settings\Bioanalyzer\2012-04-17\2012-04-17_003.xad

Created: 4/17/2012 2:07:43 PM
 Modified: 4/17/2012 2:49:03 PM

Electropherogram Summary Continued ...



Overall Results for sample 6 : CRF3 NS bf1-4 T29

Number of peaks found: 12 Corr. Area 1: 1,484.4
 Noise: 0.3

Peak table for sample 6 : CRF3 NS bf1-4 T29

Peak	Size [bp]	Conc. [pg/μl]	Molarity [pmol/l]	Observations
1	35	125.00	5,411.3	Lower Marker
2	290	75.56	395.3	
3	444	671.75	2,290.5	
4	491	95.95	295.9	
5	501	94.51	285.9	
6	530	127.73	365.2	
7	561	76.89	207.8	
8	575	53.74	141.7	
9	591	90.11	231.1	
10	626	56.64	137.2	
11	698	79.05	171.6	
12	782	67.88	131.6	
13	1,297	59.34	69.3	
14	10,380	75.00	10.9	Upper Marker

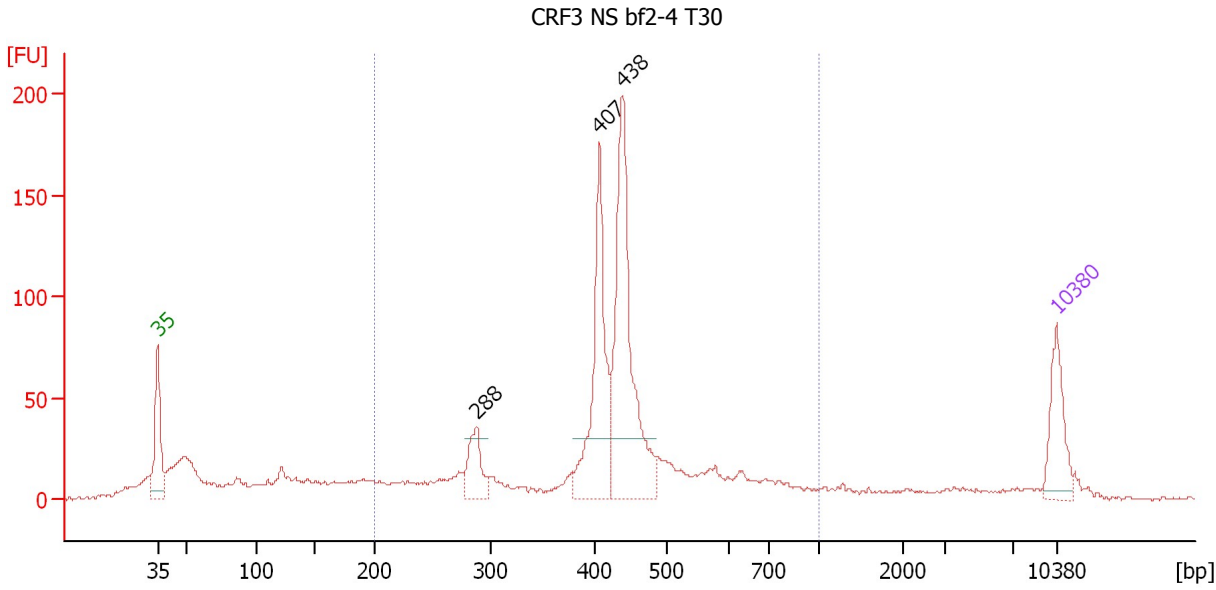
Region table for sample 6 : CRF3 NS bf1-4 T29

From [bp]	Molarity [pmol/l]	Average Size [bp]	Conc. [pg/μl]	To [bp]	Corr. Area	% of Total	Size distribution in CV [%]	Color
200	4,805.2	522	1,536.89	1,000	1,484.4	78	24.0	Blue

Assay Class: High Sensitivity DNA Assay
 Data Path: C:\...ents and Settings\Bioanalyzer\2012-04-17\2012-04-17_003.xad

Created: 4/17/2012 2:07:43 PM
 Modified: 4/17/2012 2:49:03 PM

Electropherogram Summary Continued ...



Overall Results for sample 7 : CRF3 NS bf2-4 T30

Number of peaks found: 3 Corr. Area 1: 990.7
 Noise: 1.0

Peak table for sample 7 : CRF3 NS bf2-4 T30

Peak	Size [bp]	Conc. [pg/μl]	Molarity [pmol/l]	Observations
1	35	125.00	5,411.3	Lower Marker
2	288	82.85	436.1	
3	407	279.64	1,039.9	
4	438	415.25	1,435.4	
5	10,380	75.00	10.9	Upper Marker

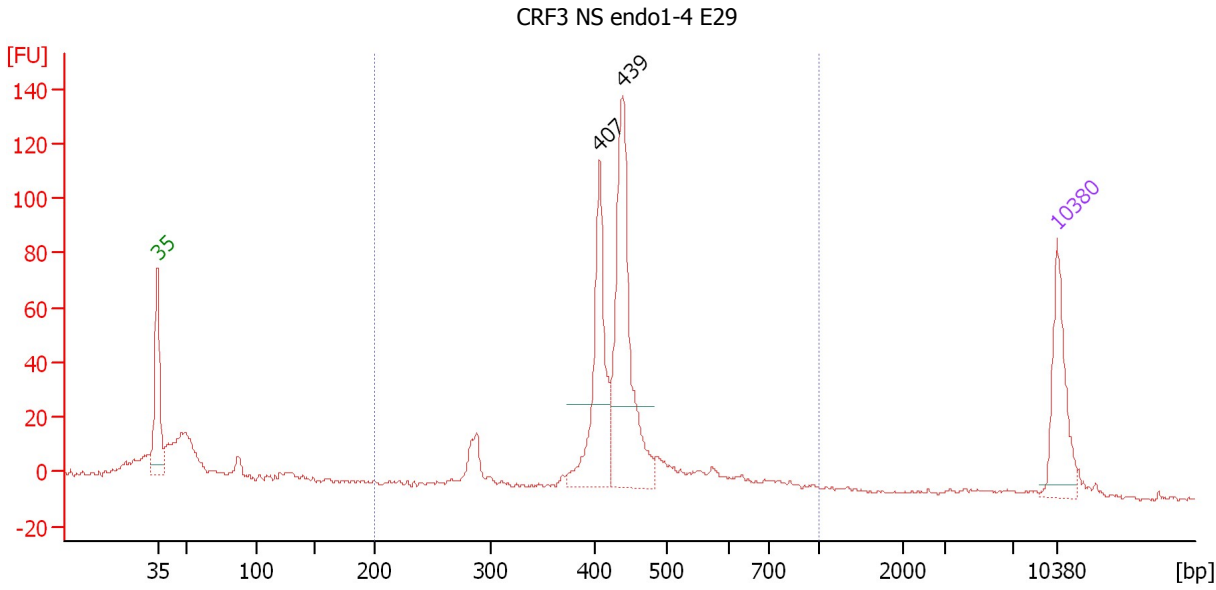
Region table for sample 7 : CRF3 NS bf2-4 T30

From [bp]	Molarity [pmol/l]	Average Size [bp]	Conc. [pg/μl]	To [bp]	Corr. Area	% of Total	Size distribution in CV [%]	Color
200	4,484.6	434	1,154.68	1,000	990.7	68	27.1	Blue

Assay Class: High Sensitivity DNA Assay
 Data Path: C:\...ents and Settings\Bioanalyzer\2012-04-17\2012-04-17_003.xad

Created: 4/17/2012 2:07:43 PM
 Modified: 4/17/2012 2:49:03 PM

Electropherogram Summary Continued ...



Overall Results for sample 8 : CRF3 NS endo1-4 E29

Number of peaks found: 2 Corr. Area 1: 478.1
 Noise: 0.7

Peak table for sample 8 : CRF3 NS endo1-4 E29

Peak	Size [bp]	Conc. [pg/μl]	Molarity [pmol/l]	Observations
1	35	125.00	5,411.3	Lower Marker
2	407	175.71	653.6	
3	439	267.58	922.9	
4	10,380	75.00	10.9	Upper Marker

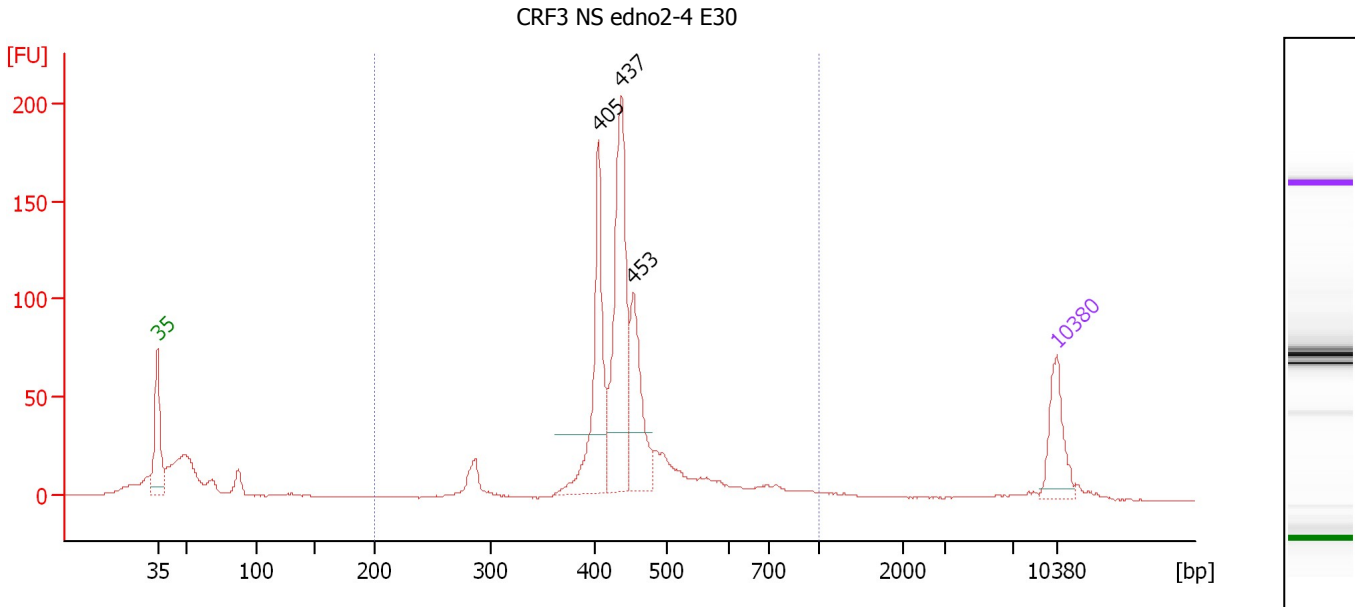
Region table for sample 8 : CRF3 NS endo1-4 E29

From [bp]	Molarity [pmol/l]	Average Size [bp]	Conc. [pg/μl]	To [bp]	Corr. Area	% of Total	Size distribution in CV [%]	Color
200	1,873.1	444	528.46	1,000	478.1	78	18.0	Blue

Assay Class: High Sensitivity DNA Assay
 Data Path: C:\...ents and Settings\Bioanalyzer\2012-04-17\2012-04-17_003.xad

Created: 4/17/2012 2:07:43 PM
 Modified: 4/17/2012 2:49:03 PM

Electropherogram Summary Continued ...



Overall Results for sample 9 : CRF3 NS edno2-4 E30

Number of peaks found: 3 Corr. Area 1: 804.1
 Noise: 0.3

Peak table for sample 9 : CRF3 NS edno2-4 E30

Peak	Size [bp]	Conc. [pg/μl]	Molarity [pmol/l]	Observations
1	35	125.00	5,411.3	Lower Marker
2	405	259.38	969.7	
3	437	362.28	1,254.9	
4	453	170.04	568.2	
5	10,380	75.00	10.9	Upper Marker

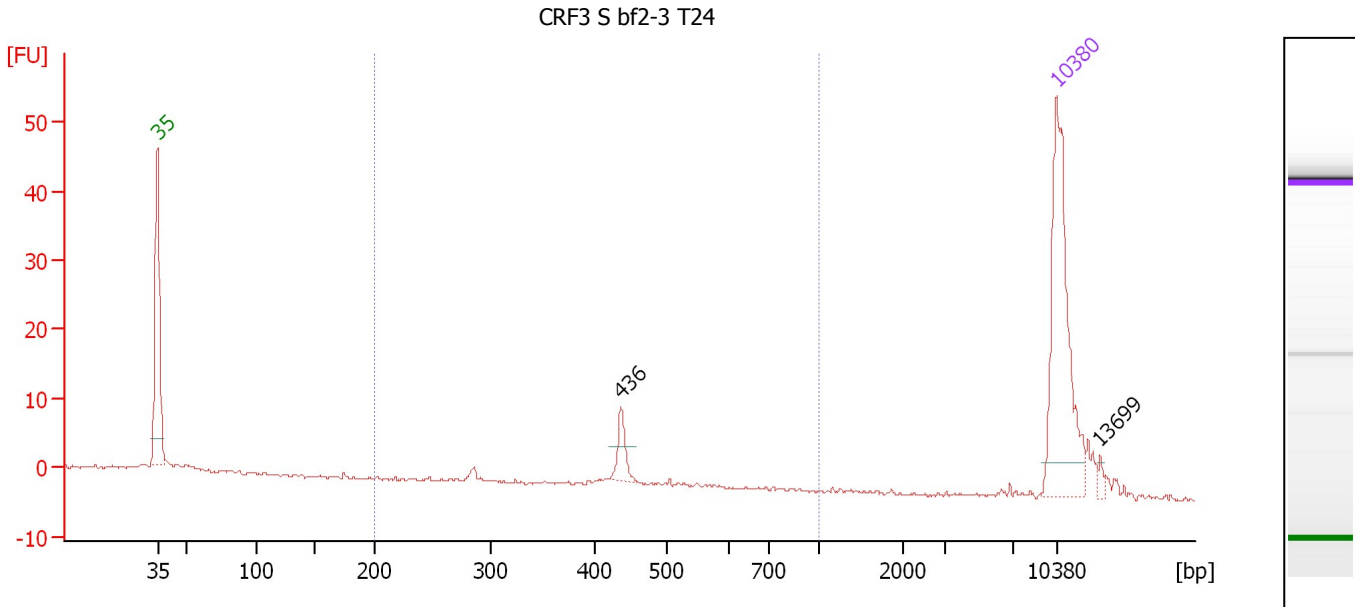
Region table for sample 9 : CRF3 NS edno2-4 E30

From [bp]	Molarity [pmol/l]	Average Size [bp]	Conc. [pg/μl]	To [bp]	Corr. Area	% of Total	Size distribution in CV [%]	Color
200	3,583.5	453	1,029.57	1,000	804.1	78	19.5	Blue

Assay Class: High Sensitivity DNA Assay
 Data Path: C:\...ents and Settings\Bioanalyzer\2012-04-17\2012-04-17_003.xad

Created: 4/17/2012 2:07:43 PM
 Modified: 4/17/2012 2:49:03 PM

Electropherogram Summary Continued ...



Setpoint Deviations for sample 10 : CRF3 S bf2-3 T24

Height Threshold [FU] : 5

Overall Results for sample 10 : CRF3 S bf2-3 T24

Number of peaks found: 2 Corr. Area 1: 12.3
 Noise: 0.2

Peak table for sample 10 : CRF3 S bf2-3 T24

Peak	Size [bp]	Conc. [pg/μl]	Molarity [pmol/l]	Observations
1	35	125.00	5,411.3	Lower Marker
2	436	13.35	46.4	
3	10,380	75.00	10.9	Upper Marker
4	13,699	0.00	0.0	

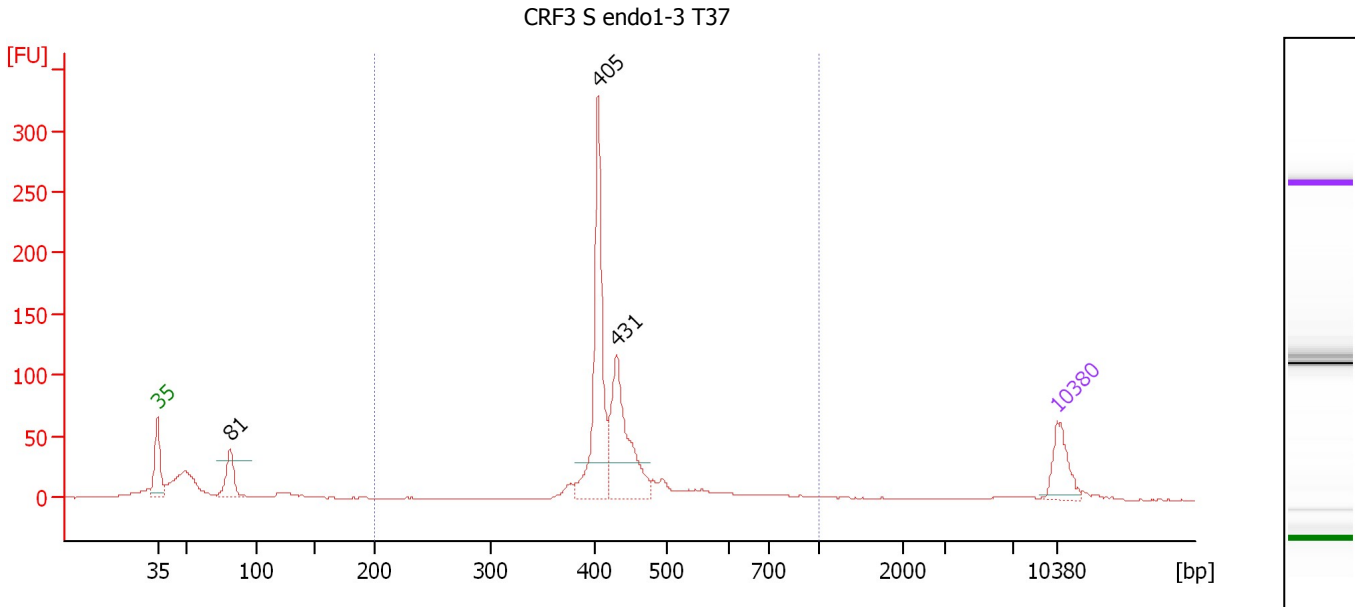
Region table for sample 10 : CRF3 S bf2-3 T24

From [bp]	Molarity [pmol/l]	Average Size [bp]	Conc. [pg/μl]	To [bp]	Corr. Area	% of Total	Size distribution in CV [%]	Color
200	63.7	426	17.38	1,000	12.3	35	11.0	Blue

Assay Class: High Sensitivity DNA Assay
 Data Path: C:\...ents and Settings\Bioanalyzer\2012-04-17\2012-04-17_003.xad

Created: 4/17/2012 2:07:43 PM
 Modified: 4/17/2012 2:49:03 PM

Electropherogram Summary Continued ...



Overall Results for sample 11 : CRF3 S endo1-3 T37

Number of peaks found: 3 Corr. Area 1: 672.0
 Noise: 0.2

Peak table for sample 11 : CRF3 S endo1-3 T37

Peak	Size [bp]	Conc. [pg/μl]	Molarity [pmol/l]	Observations
1	35	125.00	5,411.3	Lower Marker
2	81	120.75	2,249.1	
3	405	428.28	1,600.6	
4	431	310.18	1,090.8	
5	10,380	75.00	10.9	Upper Marker

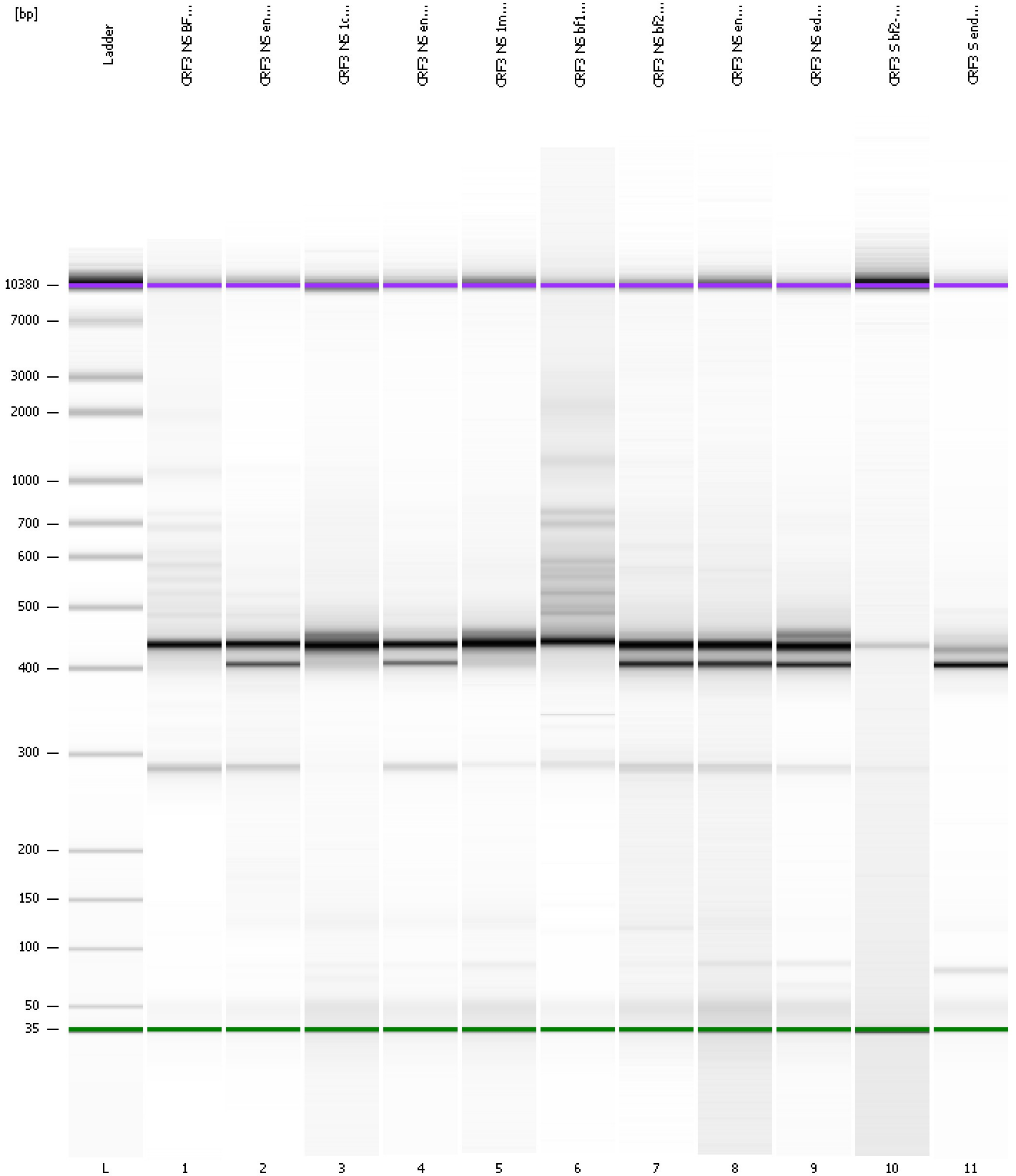
Region table for sample 11 : CRF3 S endo1-3 T37

From [bp]	Molarity [pmol/l]	Average Size [bp]	Conc. [pg/μl]	To [bp]	Corr. Area	% of Total	Size distribution in CV [%]	Color
200	3,135.3	444	892.50	1,000	672.0	71	18.9	Blue

Assay Class: High Sensitivity DNA Assay
Data Path: C:\...ents and Settings\Bioanalyzer\2012-04-17\2012-04-17_003.xad

Created: 4/17/2012 2:07:43 PM
Modified: 4/17/2012 2:49:03 PM

Gel Image



Assay Class: High Sensitivity DNA Assay
 Data Path: C:\...ents and Settings\Bioanalyzer\2012-04-17\2012-04-17_003.xad

Created: 4/17/2012 2:07:43 PM
 Modified: 4/17/2012 2:49:03 PM

Run Logbook

Description	Number	Source	Category	Sub Category	Time	Time Zone	User	Host
Run ended on port 1 (Number of wells acquired: 12)		Instrument	Run		4/17/2012 2:49:00 PM	(GMT --07:00) Pacific Standard Time	UC Davis	D8XSMGH1
Run started on port 1 (File: C:\Documents and Settings\Bioanalyzer\2012-04-17\2012-04-17_003.xad)		Instrument	Run		4/17/2012 2:07:48 PM	(GMT --07:00) Pacific Standard Time	UC Davis	D8XSMGH1
Product Number : G2938B		Instrument	Run		4/17/2012 2:07:48 PM	(GMT --07:00) Pacific Standard Time	UC Davis	D8XSMGH1
Name :		Instrument	Run		4/17/2012 2:07:48 PM	(GMT --07:00) Pacific Standard Time	UC Davis	D8XSMGH1
Vendor : Agilent Technologies		Instrument	Run		4/17/2012 2:07:48 PM	(GMT --07:00) Pacific Standard Time	UC Davis	D8XSMGH1
Serial# : DE13701086		Instrument	Run		4/17/2012 2:07:48 PM	(GMT --07:00) Pacific Standard Time	UC Davis	D8XSMGH1
Firmware : C.01.069		Instrument	Run		4/17/2012 2:07:48 PM	(GMT --07:00) Pacific Standard Time	UC Davis	D8XSMGH1
Cartridge : Electrode		Instrument	Run		4/17/2012 2:07:48 PM	(GMT --07:00) Pacific Standard Time	UC Davis	D8XSMGH1