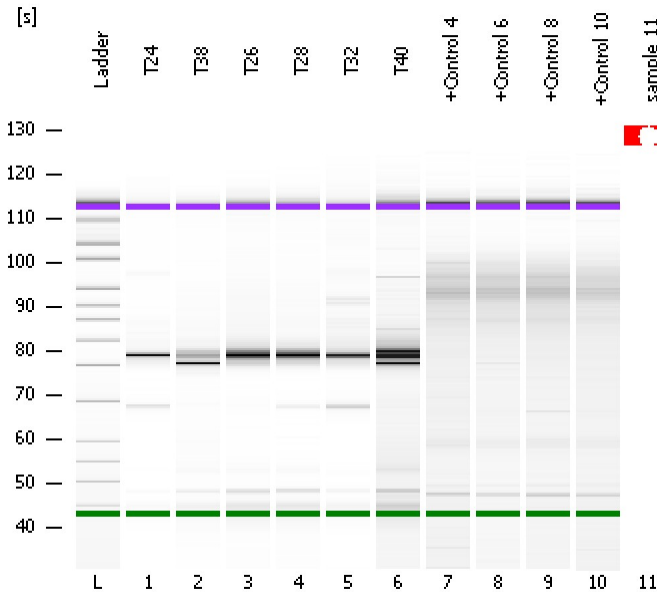


Assay Class: High Sensitivity DNA Assay  
Data Path: C:\...ents and Settings\Bioanalyzer\2012-04-18\2012-04-18\_001.xad

Created: 4/18/2012 10:45:02 AM  
Modified: 4/18/2012 11:22:30 AM

### Electrophoresis File Run Summary



#### Instrument Information:

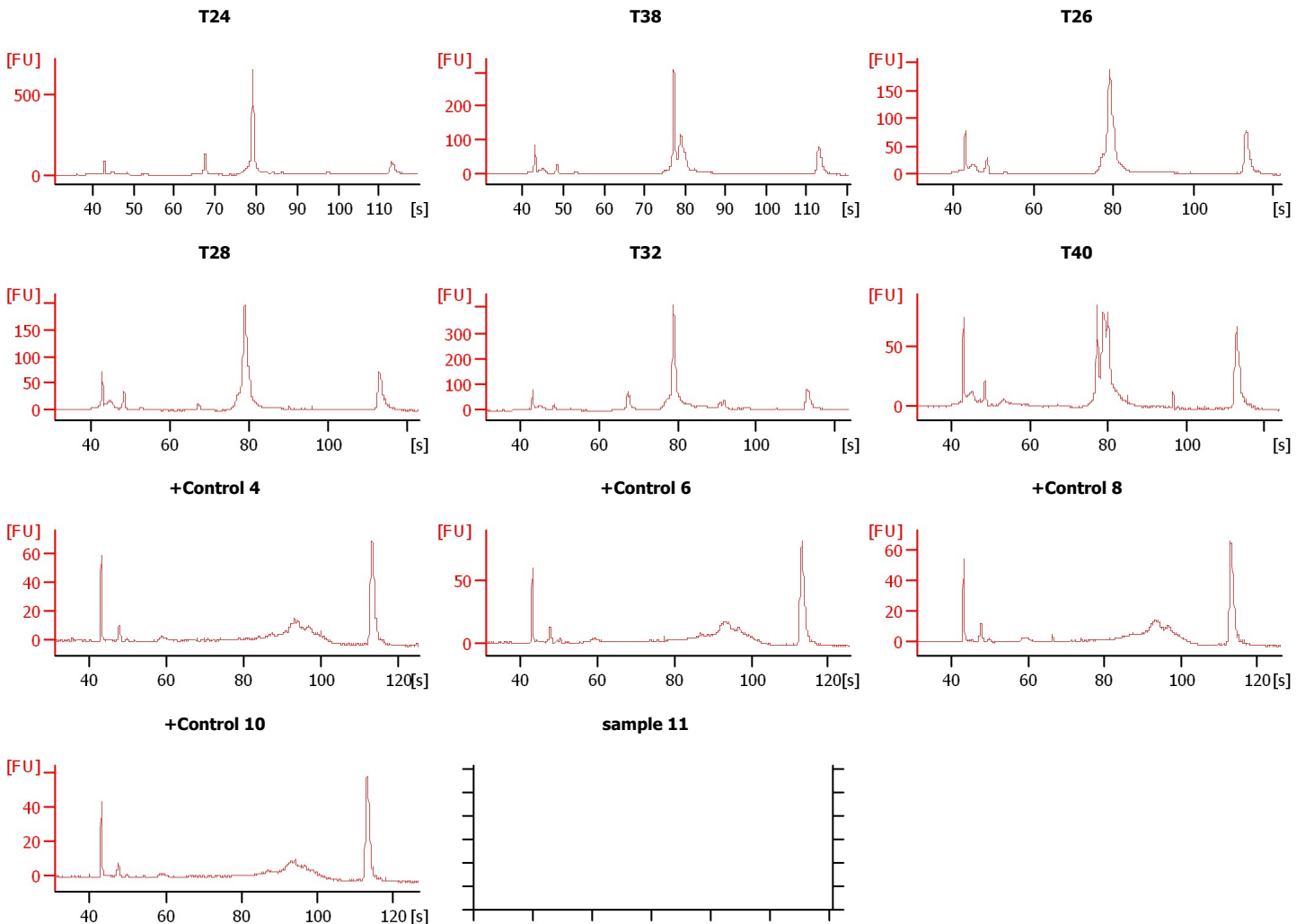
Instrument Name: DE13701086      Firmware: C.01.069  
Serial#: DE13701086      Type: G2938B

#### Assay Information:

Assay Origin Path: C:\Program Files\Agilent\2100 bioanalyzer\2100 expert\assays\dsDNA\High Sensitivity DNA.xsy  
Assay Class: High Sensitivity DNA Assay  
Version: 1.03  
Assay Comments: Copyright © 2003-2010 Agilent Technologies

#### Chip Information:

Chip Lot #:      Reagent Kit Lot #:      Chip Comments:



Assay Class: High Sensitivity DNA Assay  
 Data Path: C:\...ents and Settings\Bioanalyzer\2012-04-18\2012-04-18\_001.xad

Created: 4/18/2012 10:45:02 AM  
 Modified: 4/18/2012 11:22:30 AM

**Electrophoresis File Run Summary (Chip Summary)**

Sample Name	Sample Comment	Rest. Digest	Status	Observation	Result Label	Result Color
T24		<input type="checkbox"/>	✓			
T38		<input type="checkbox"/>	✓			
T26		<input type="checkbox"/>	✓			
T28		<input type="checkbox"/>	✓			
T32		<input type="checkbox"/>	✓			
T40		<input type="checkbox"/>	✓			
+Control 4		<input type="checkbox"/>	✓			
+Control 6		<input type="checkbox"/>	✓			
+Control 8		<input type="checkbox"/>	✓			
+Control 10		<input type="checkbox"/>	✓			
sample 11		<input type="checkbox"/>	✗			
Ladder		<input type="checkbox"/>	✓			

**Chip Lot #**

**Reagent Kit Lot #**

**Chip Comments :**

Assay Class: High Sensitivity DNA Assay  
 Data Path: C:\...ents and Settings\Bioanalyzer\2012-04-18\2012-04-18\_001.xad

Created: 4/18/2012 10:45:02 AM  
 Modified: 4/18/2012 11:22:30 AM

**Electrophoresis Assay Details**

**General Analysis Settings**

Number of Available Sample and Ladder Wells (Max.) : 12  
 Minimum Visible Range [s] : 32  
 Maximum Visible Range [s] : 138  
 Start Analysis Time Range [s] : 33  
 End Analysis Time Range [s] : 137.5  
 Ladder Concentration [pg/μl] : 1950  
 Uses Standard Area for Ladder Fragments  
 Lower Marker Concentration [pg/μl] : 125  
 Upper Marker Concentration [pg/μl] : 75  
 Used Upper Marker for Quantitation  
 Standard Curve Fit is Point to Point  
 Show Data Aligned to Lower and Upper Marker

**Integrator Settings**

Integration Start Time [s] : 33.05  
 Integration End Time [s] : 137  
 Slope Threshold : 0.8  
 Height Threshold [FU] : 5  
 Area Threshold : 0.1  
 Width Threshold [s] : 0.6  
 Baseline Plateau [s] : 0.5

**Filter Settings**

Filter Width [s] : 0.5  
 Polynomial Order : 4

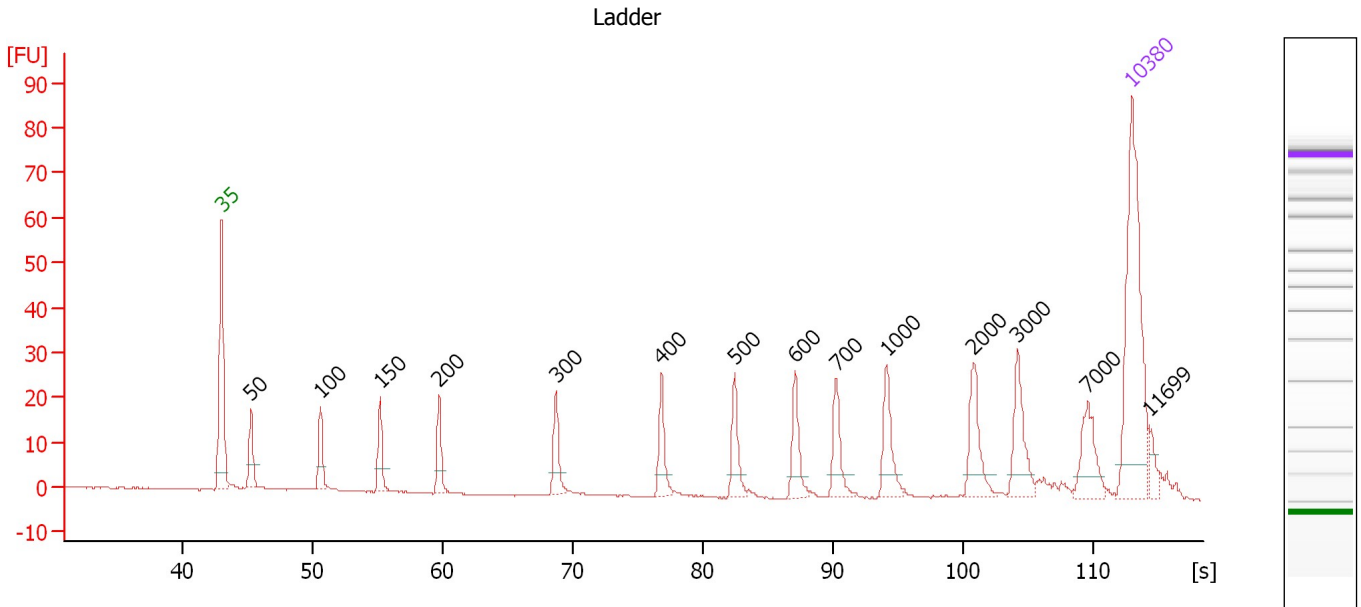
**Ladder**

Ladder Peak	Size	Area
1	35	160
2	50	210
3	100	208
4	150	221
5	200	242
6	300	270
7	400	305
8	500	306
9	600	336
10	700	321
11	1000	366
12	2000	413
13	3000	411
14	7000	400
15	10380	214

Assay Class: High Sensitivity DNA Assay  
 Data Path: C:\...ents and Settings\Bioanalyzer\2012-04-18\2012-04-18\_001.xad

Created: 4/18/2012 10:45:02 AM  
 Modified: 4/18/2012 11:22:30 AM

**Electropherogram Summary**



**Overall Results for Ladder**

Noise: 0.2

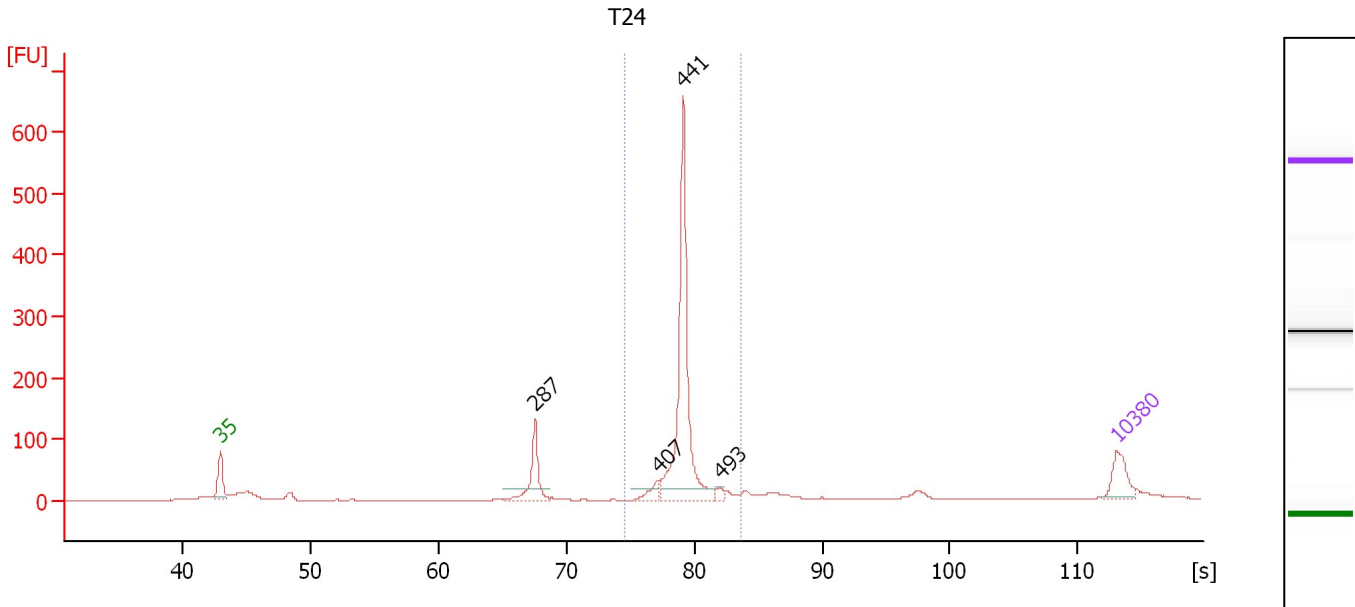
**Peak table for Ladder**

Peak	Size [bp]	Conc. [pg/μl]	Molarity [pmol/l]	Observations
1	35	125.00	5,411.3	Lower Marker
2	50	150.00	4,545.5	Ladder Peak
3	100	150.00	2,272.7	Ladder Peak
4	150	150.00	1,515.2	Ladder Peak
5	200	150.00	1,136.4	Ladder Peak
6	300	150.00	757.6	Ladder Peak
7	400	150.00	568.2	Ladder Peak
8	500	150.00	454.5	Ladder Peak
9	600	150.00	378.8	Ladder Peak
10	700	150.00	324.7	Ladder Peak
11	1,000	150.00	227.3	Ladder Peak
12	2,000	150.00	113.6	Ladder Peak
13	3,000	150.00	75.8	Ladder Peak
14	7,000	150.00	32.5	Ladder Peak
15	10,380	75.00	10.9	Upper Marker
16	11,699	0.00	0.0	

Assay Class: High Sensitivity DNA Assay  
 Data Path: C:\...ents and Settings\Bioanalyzer\2012-04-18\2012-04-18\_001.xad

Created: 4/18/2012 10:45:02 AM  
 Modified: 4/18/2012 11:22:30 AM

**Electropherogram Summary Continued ...**



**Setpoint Deviations for sample 1 : T24**

Height Threshold [FU] : 20

**Overall Results for sample 1 : T24**

Number of peaks found: 4                      Corr. Area 1: 740.4  
 Noise: 0.2

**Peak table for sample 1 : T24**

Peak	Size [bp]	Conc. [pg/μl]	Molarity [pmol/l]	Observations
1	35	125.00	5,411.3	Lower Marker
2	287	180.47	951.7	
3	407	43.96	163.7	
4	441	767.16	2,635.0	
5	493	20.05	61.7	
6	10,380	75.00	10.9	Upper Marker

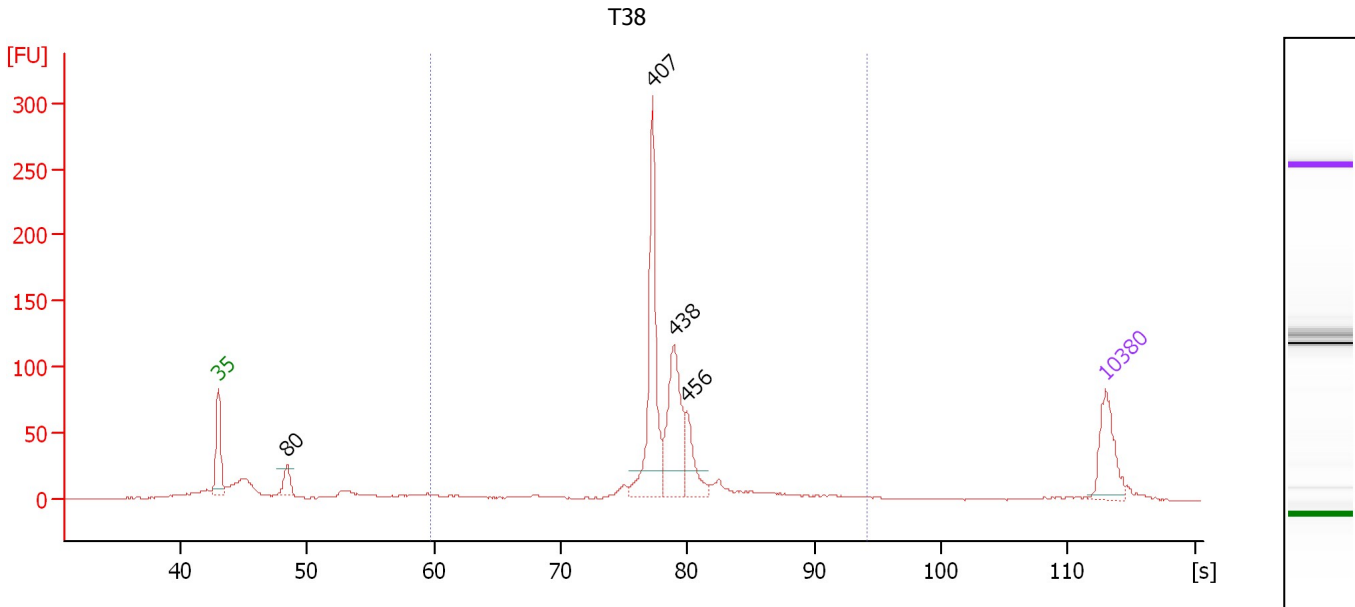
**Region table for sample 1 : T24**

From [bp]	Molarity [pmol/l]	Average Size [bp]	Conc. [pg/μl]	To [bp]	Corr. Area	% of Total	Size distribution in CV [%]	Color
373	2,854.0	442	832.35	524	740.4	69	4.3	Blue

Assay Class: High Sensitivity DNA Assay  
 Data Path: C:\...ents and Settings\Bioanalyzer\2012-04-18\2012-04-18\_001.xad

Created: 4/18/2012 10:45:02 AM  
 Modified: 4/18/2012 11:22:30 AM

**Electropherogram Summary Continued ...**



**Setpoint Deviations for sample 2 : T38**

Height Threshold [FU] : 20

**Overall Results for sample 2 : T38**

Number of peaks found: 4                      Corr. Area 1: 686.8  
 Noise: 0.3

**Peak table for sample 2 : T38**

Peak	Size [bp]	Conc. [pg/μl]	Molarity [pmol/l]	Observations
1	35	125.00	5,411.3	Lower Marker
2	80	44.18	841.1	
3	407	280.86	1,044.6	
4	438	197.55	684.1	
5	456	72.04	239.1	
6	10,380	75.00	10.9	Upper Marker

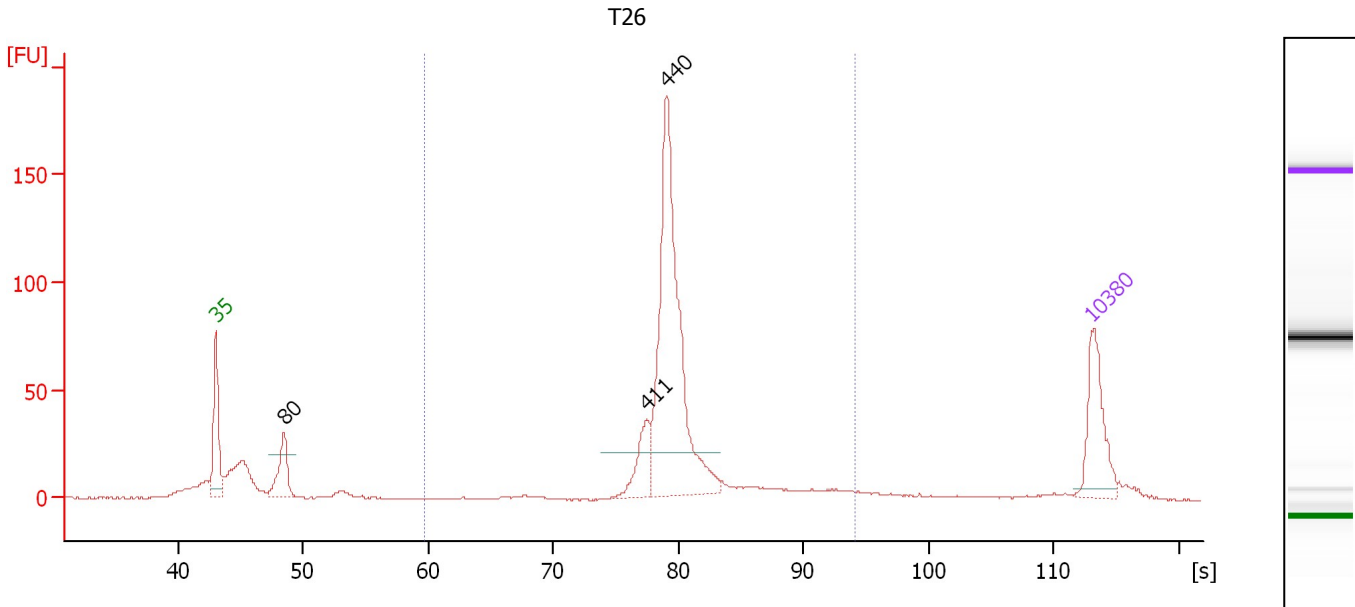
**Region table for sample 2 : T38**

From [bp]	Molarity [pmol/l]	Average Size [bp]	Conc. [pg/μl]	To [bp]	Corr. Area	% of Total	Size distribution in CV [%]	Color
200	2,597.4	440	717.60	1,000	686.8	72	20.3	Blue

Assay Class: High Sensitivity DNA Assay  
 Data Path: C:\...ents and Settings\Bioanalyzer\2012-04-18\2012-04-18\_001.xad

Created: 4/18/2012 10:45:02 AM  
 Modified: 4/18/2012 11:22:30 AM

**Electropherogram Summary Continued ...**



**Setpoint Deviations for sample 3 : T26**

Height Threshold [FU] : 20

**Overall Results for sample 3 : T26**

Number of peaks found: 3                      Corr. Area 1: 580.6  
 Noise: 0.2

**Peak table for sample 3 : T26**

Peak	Size [bp]	Conc. [pg/μl]	Molarity [pmol/l]	Observations
1	35	125.00	5,411.3	Lower Marker
2	80	79.88	1,515.9	
3	411	58.67	216.5	
4	440	447.41	1,541.8	
5	10,380	75.00	10.9	Upper Marker

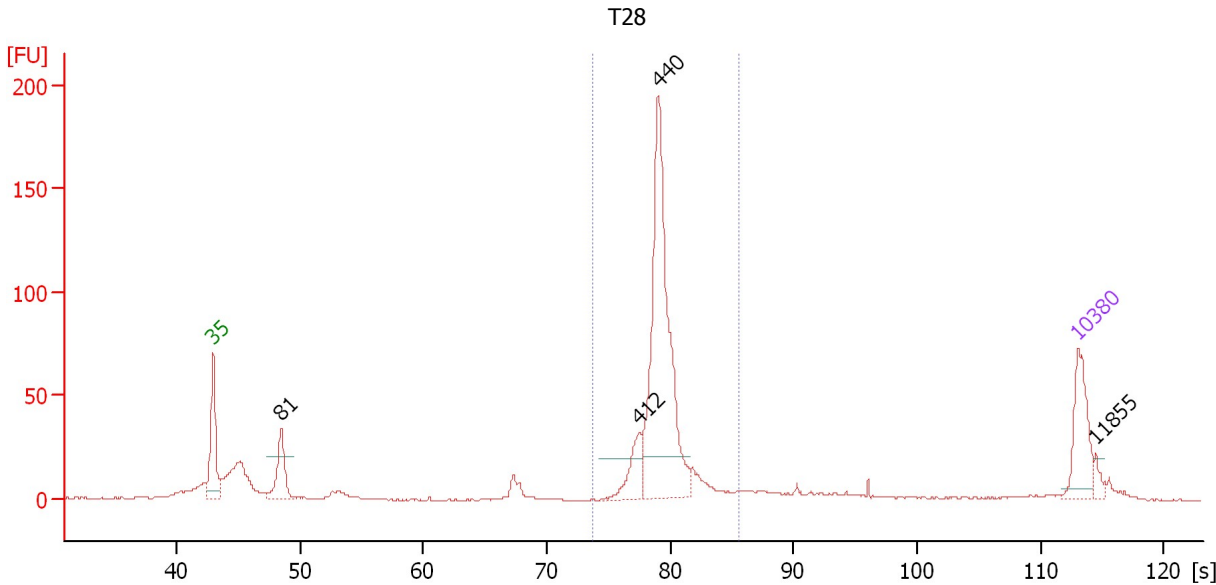
**Region table for sample 3 : T26**

From [bp]	Molarity [pmol/l]	Average Size [bp]	Conc. [pg/μl]	To [bp]	Corr. Area	% of Total	Size distribution in CV [%]	Color
200	1,978.9	469	592.02	1,000	580.6	69	19.5	Blue

Assay Class: High Sensitivity DNA Assay  
 Data Path: C:\...ents and Settings\Bioanalyzer\2012-04-18\2012-04-18\_001.xad

Created: 4/18/2012 10:45:02 AM  
 Modified: 4/18/2012 11:22:30 AM

**Electropherogram Summary Continued ...**



**Setpoint Deviations for sample 4 : T28**

Height Threshold [FU] : 20

**Overall Results for sample 4 : T28**

Number of peaks found: 4  
 Noise: 0.3  
 Corr. Area 1: 478.2

**Peak table for sample 4 : T28**

Peak	Size [bp]	Conc. [pg/μl]	Molarity [pmol/l]	Observations
1	35	125.00	5,411.3	Lower Marker
2	81	96.13	1,809.1	
3	412	63.78	234.8	
4	440	499.50	1,721.9	
5	10,380	75.00	10.9	Upper Marker
6	11,855	0.00	0.0	

**Region table for sample 4 : T28**

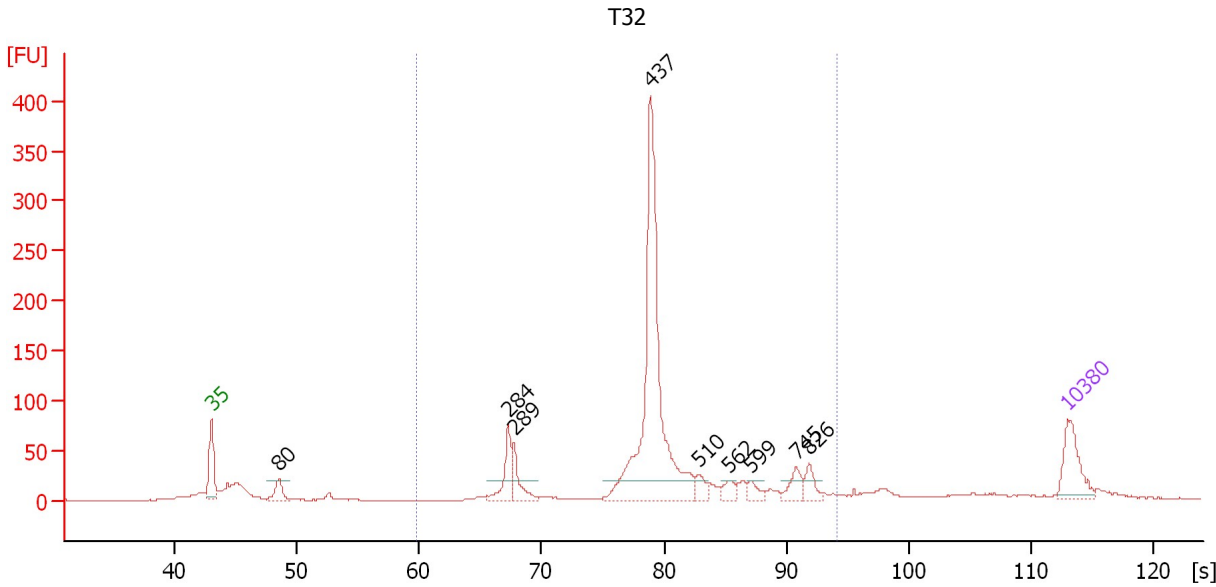
From [bp]	Molarity [pmol/l]	Average Size [bp]	Conc. [pg/μl]	To [bp]	Corr. Area	% of Total	Size distribution in CV [%]	Color
363	2,072.3	446	608.09	568	478.2	62	6.1	Blue



Assay Class: High Sensitivity DNA Assay  
 Data Path: C:\...ents and Settings\Bioanalyzer\2012-04-18\2012-04-18\_001.xad

Created: 4/18/2012 10:45:02 AM  
 Modified: 4/18/2012 11:22:30 AM

**Electropherogram Summary Continued ...**



**Setpoint Deviations for sample 5 : T32**

Height Threshold [FU] : 20

**Overall Results for sample 5 : T32**

Number of peaks found: 9                      Corr. Area 1: 1,080.0  
 Noise: 0.3

**Peak table for sample 5 : T32**

Peak	Size [bp]	Conc. [pg/μl]	Molarity [pmol/l]	Observations
1	35	125.00	5,411.3	Lower Marker
2	80	47.61	899.3	
3	284	86.34	460.1	
4	289	64.38	337.2	
5	437	707.39	2,454.9	
6	510	29.46	87.5	
7	562	22.73	61.3	
8	599	21.55	54.5	
9	745	37.24	75.8	
10	826	31.85	58.4	
11	10,380	75.00	10.9	Upper Marker

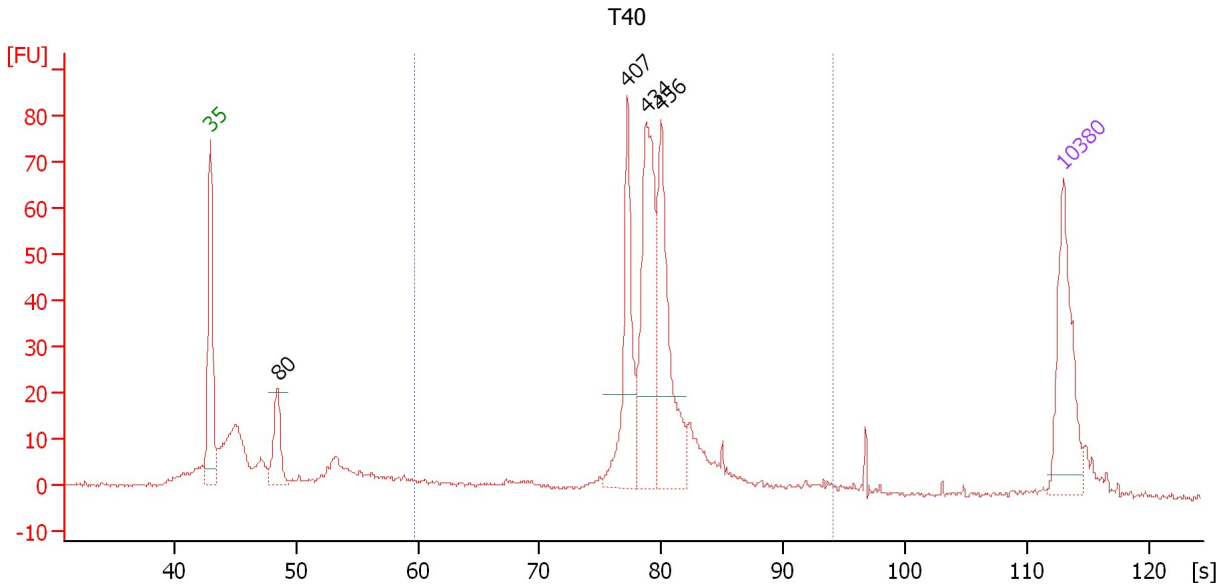
**Region table for sample 5 : T32**

From [bp]	Molarity [pmol/l]	Average Size [bp]	Conc. [pg/μl]	To [bp]	Corr. Area	% of Total	Size distribution in CV [%]	Color
200	3,666.2	472	1,040.87	1,000	1,080.0	80	26.9	Blue

Assay Class: High Sensitivity DNA Assay  
 Data Path: C:\...ents and Settings\Bioanalyzer\2012-04-18\2012-04-18\_001.xad

Created: 4/18/2012 10:45:02 AM  
 Modified: 4/18/2012 11:22:30 AM

**Electropherogram Summary Continued ...**



**Setpoint Deviations for sample 6 : T40**

Height Threshold [FU] : 20

**Overall Results for sample 6 : T40**

Number of peaks found: 4                      Corr. Area 1: 434.8  
 Noise: 0.4

**Peak table for sample 6 : T40**

Peak	Size [bp]	Conc. [pg/μl]	Molarity [pmol/l]	Observations
1	35	125.00	5,411.3	Lower Marker
2	80	59.35	1,118.9	
3	407	112.20	417.4	
4	434	167.86	586.2	
5	456	145.69	484.2	
6	10,380	75.00	10.9	Upper Marker

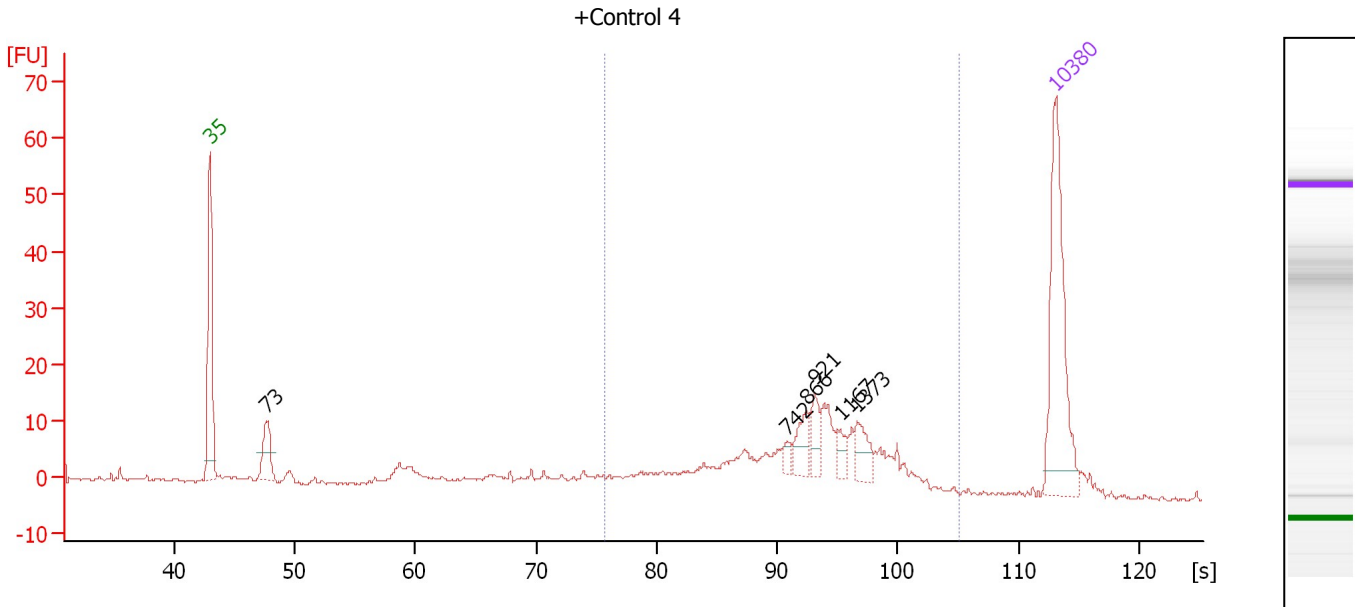
**Region table for sample 6 : T40**

From [bp]	Molarity [pmol/l]	Average Size [bp]	Conc. [pg/μl]	To [bp]	Corr. Area	% of Total	Size distribution in CV [%]	Color
200	1,953.4	451	552.56	1,000	434.8	65	19.5	Blue

Assay Class: High Sensitivity DNA Assay  
 Data Path: C:\...ents and Settings\Bioanalyzer\2012-04-18\2012-04-18\_001.xad

Created: 4/18/2012 10:45:02 AM  
 Modified: 4/18/2012 11:22:30 AM

**Electropherogram Summary Continued ...**



**Overall Results for sample 7 : +Control 4**

Number of peaks found: 6                      Corr. Area 1: 181.3  
 Noise: 0.3

**Peak table for sample 7 : +Control 4**

Peak	Size [bp]	Conc. [pg/μl]	Molarity [pmol/l]	Observations
1	35	125.00	5,411.3	Lower Marker
2	73	30.68	640.9	
3	742	5.53	11.3	
4	866	14.49	25.3	
5	921	13.54	22.3	
6	1,167	7.32	9.5	
7	1,373	14.42	15.9	
8	10,380	75.00	10.9	Upper Marker

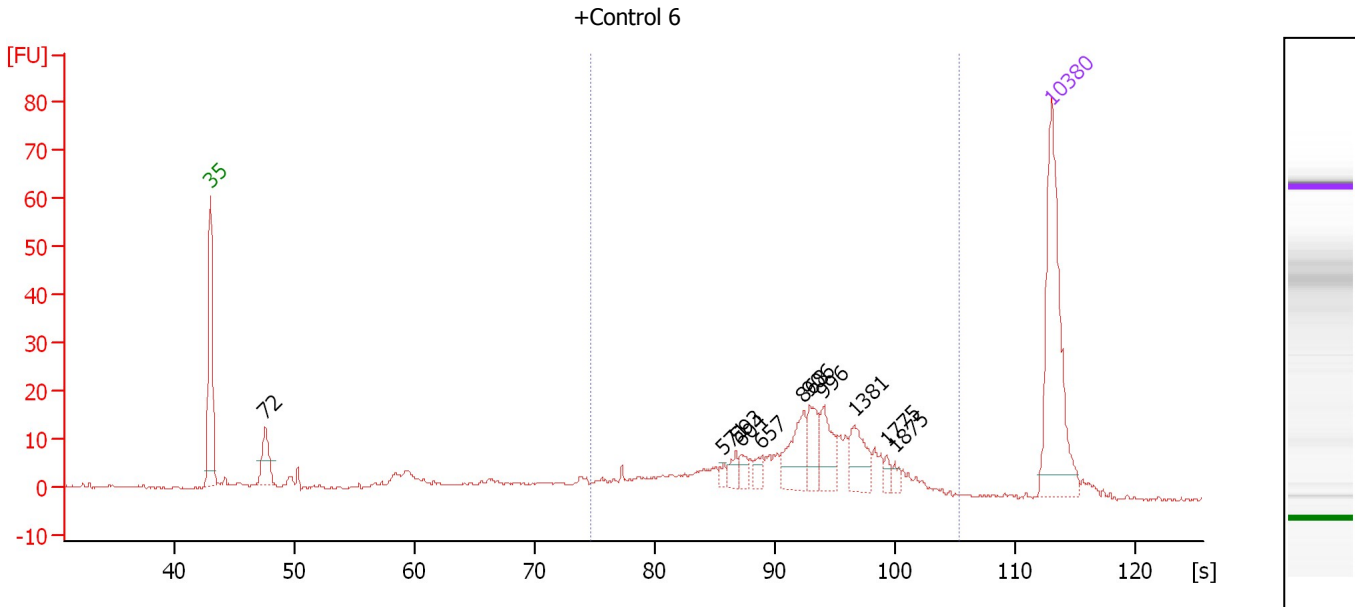
**Region table for sample 7 : +Control 4**

From [bp]	Molarity [pmol/l]	Average Size [bp]	Conc. [pg/μl]	To [bp]	Corr. Area	% of Total	Size distribution in CV [%]	Color
387	393.1	1,011	204.17	3,624	181.3	69	46.6	Blue

Assay Class: High Sensitivity DNA Assay  
 Data Path: C:\...ents and Settings\Bioanalyzer\2012-04-18\2012-04-18\_001.xad

Created: 4/18/2012 10:45:02 AM  
 Modified: 4/18/2012 11:22:30 AM

**Electropherogram Summary Continued ...**



**Overall Results for sample 8 : +Control 6**

Number of peaks found: 11                      Corr. Area 1: 231.7  
 Noise: 0.2

**Peak table for sample 8 : +Control 6**

Peak	Size [bp]	Conc. [pg/μl]	Molarity [pmol/l]	Observations
1	35	125.00	5,411.3	Lower Marker
2	72	27.15	575.3	
3	571	3.36	8.9	
4	593	6.53	16.7	
5	604	6.17	15.5	
6	657	6.30	14.5	
7	868	26.69	46.6	
8	906	17.77	29.7	
9	996	20.79	31.6	
10	1,381	19.62	21.5	
11	1,775	3.77	3.2	
12	1,875	3.46	2.8	
13	10,380	75.00	10.9	Upper Marker

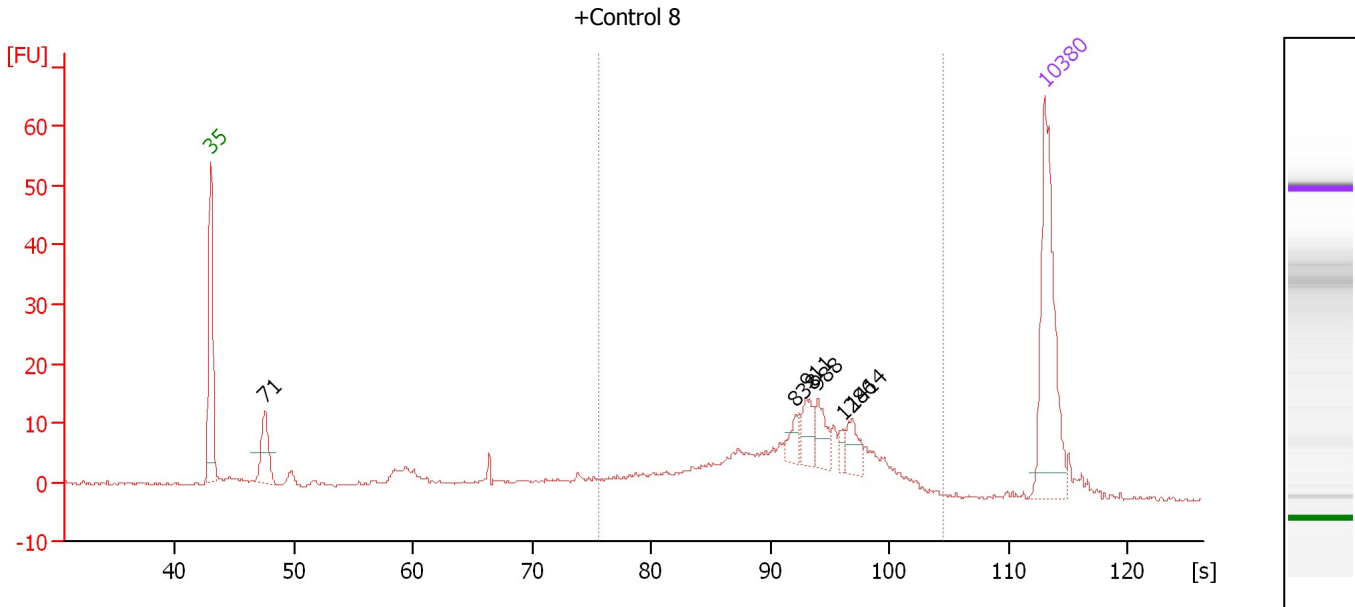
**Region table for sample 8 : +Control 6**

From [bp]	Molarity [pmol/l]	Average Size [bp]	Conc. [pg/μl]	To [bp]	Corr. Area	% of Total	Size distribution in CV [%]	Color
373	439.3	1,007	220.30	3,894	231.7	69	50.6	Blue

Assay Class: High Sensitivity DNA Assay  
 Data Path: C:\...ents and Settings\Bioanalyzer\2012-04-18\2012-04-18\_001.xad

Created: 4/18/2012 10:45:02 AM  
 Modified: 4/18/2012 11:22:30 AM

**Electropherogram Summary Continued ...**



**Overall Results for sample 9 : +Control 8**

Number of peaks found: 6                      Corr. Area 1: 196.0  
 Noise: 0.2

**Peak table for sample 9 : +Control 8**

Peak	Size [bp]	Conc. [pg/μl]	Molarity [pmol/l]	Observations
1	35	125.00	5,411.3	Lower Marker
2	71	38.22	815.4	
3	838	10.45	18.9	
4	911	14.84	24.7	
5	988	15.55	23.9	
6	1,286	4.95	5.8	
7	1,414	13.51	14.5	
8	10,380	75.00	10.9	Upper Marker

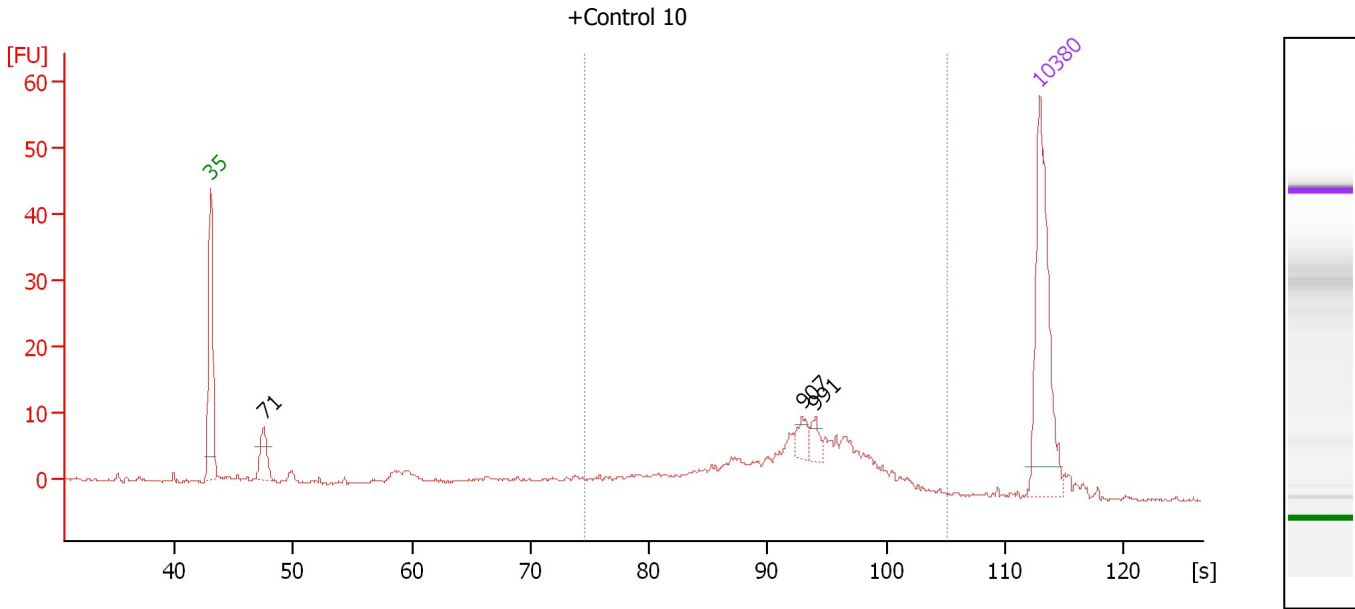
**Region table for sample 9 : +Control 8**

From [bp]	Molarity [pmol/l]	Average Size [bp]	Conc. [pg/μl]	To [bp]	Corr. Area	% of Total	Size distribution in CV [%]	Color
384	473.4	994	239.09	3,166	196.0	66	48.3	Blue

Assay Class: High Sensitivity DNA Assay  
 Data Path: C:\...ents and Settings\Bioanalyzer\2012-04-18\2012-04-18\_001.xad

Created: 4/18/2012 10:45:02 AM  
 Modified: 4/18/2012 11:22:30 AM

**Electropherogram Summary Continued ...**



**Overall Results for sample 10 : +Control 10**

Number of peaks found: 3                      Corr. Area 1: 143.6  
 Noise: 0.2

**Peak table for sample 10 : +Control 10**

Peak	Size [bp]	Conc. [pg/μl]	Molarity [pmol/l]	Observations
1	35	125.00	5,411.3	Lower Marker
2	71	27.33	585.1	
3	907	9.52	15.9	
4	991	7.96	12.2	
5	10,380	75.00	10.9	Upper Marker

**Region table for sample 10 : +Control 10**

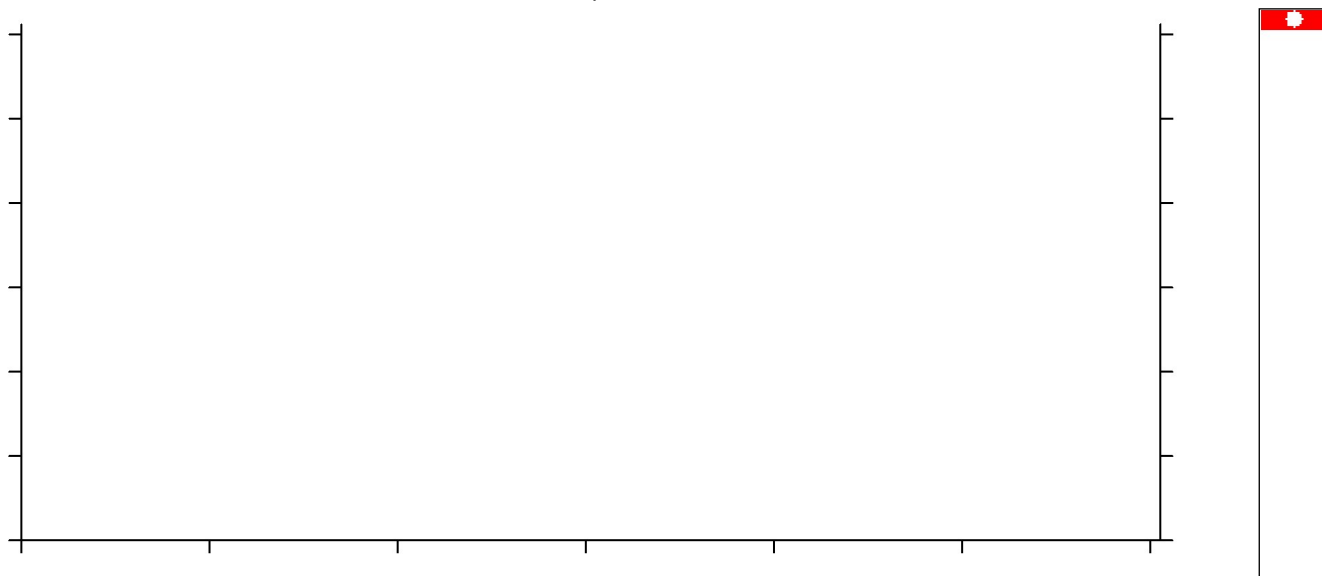
From [bp]	Molarity [pmol/l]	Average Size [bp]	Conc. [pg/μl]	To [bp]	Corr. Area	% of Total	Size distribution in CV [%]	Color
373	397.1	1,010	197.53	3,653	143.6	66	51.8	Blue

Assay Class: High Sensitivity DNA Assay  
Data Path: C:\...ents and Settings\Bioanalyzer\2012-04-18\2012-04-18\_001.xad

Created: 4/18/2012 10:45:02 AM  
Modified: 4/18/2012 11:22:30 AM

**Electropherogram Summary Continued ...**

sample 11



**Setpoint Deviations for sample 11 : sample 11**

End Analysis Time Range [s] : 31.25

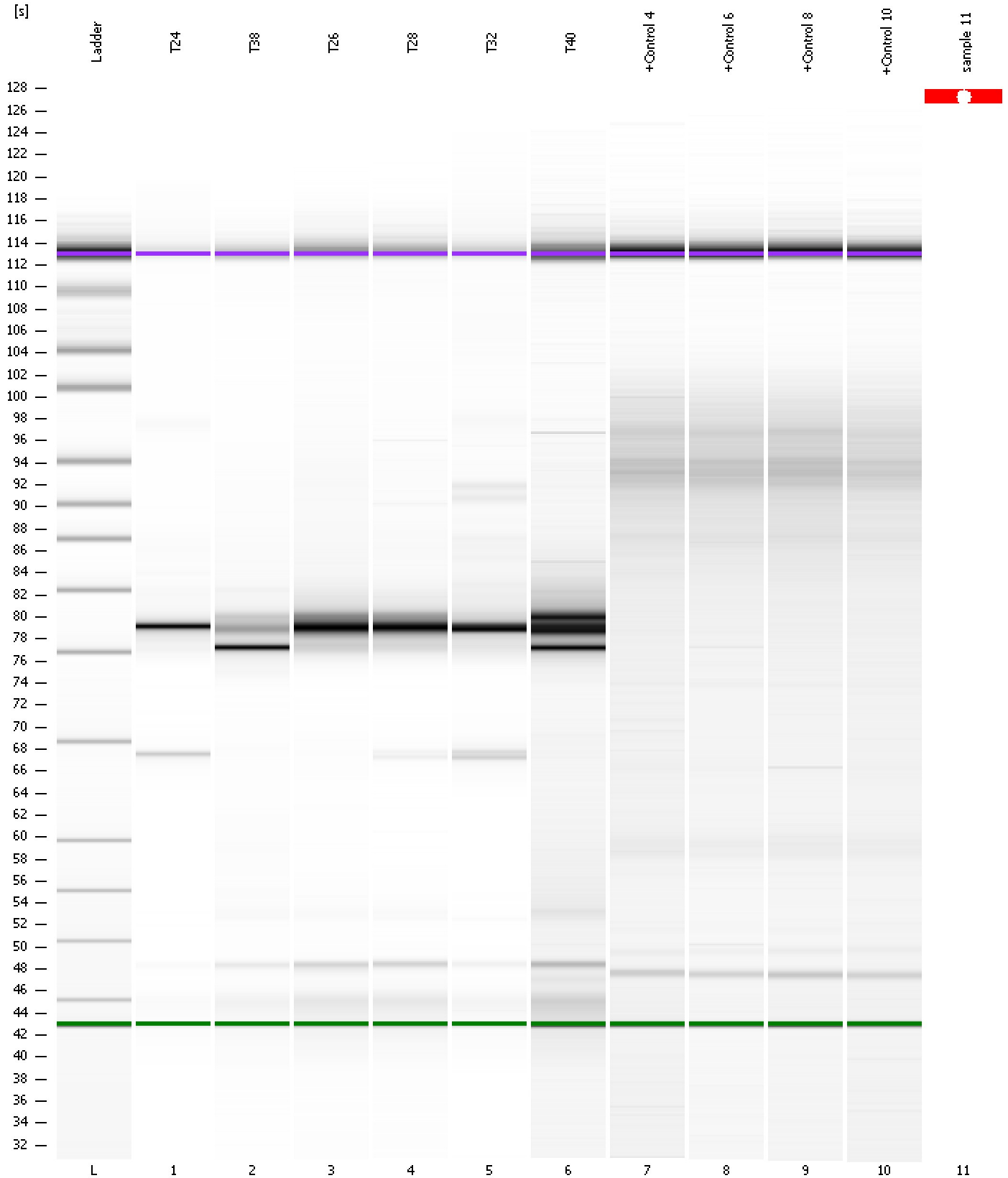
**Overall Results for sample 11 : sample 11**

Noise: 0.2

Assay Class: High Sensitivity DNA Assay  
Data Path: C:\...ents and Settings\Bioanalyzer\2012-04-18\2012-04-18\_001.xad

Created: 4/18/2012 10:45:02 AM  
Modified: 4/18/2012 11:22:30 AM

**Gel Image**





Assay Class: High Sensitivity DNA Assay  
 Data Path: C:\...ents and Settings\Bioanalyzer\2012-04-18\2012-04-18\_001.xad

Created: 4/18/2012 10:45:02 AM  
 Modified: 4/18/2012 11:22:30 AM

**Run Logbook**

Description	Number	Source	Category	Sub Category	Time	Time Zone	User	Host
Run aborted on port 1		Instrument	Run		4/18/2012 11:24:19 AM	(GMT --07:00) Pacific Standard Time	UC Davis	D8XSMGH1
Run started on port 1 (File: C:\Documents and Settings\Bioanalyzer\2012-04-18\2012-04-18_001.xad)		Instrument	Run		4/18/2012 10:45:07 AM	(GMT --07:00) Pacific Standard Time	UC Davis	D8XSMGH1
Product Number : G2938B		Instrument	Run		4/18/2012 10:45:07 AM	(GMT --07:00) Pacific Standard Time	UC Davis	D8XSMGH1
Name :		Instrument	Run		4/18/2012 10:45:07 AM	(GMT --07:00) Pacific Standard Time	UC Davis	D8XSMGH1
Vendor : Agilent Technologies		Instrument	Run		4/18/2012 10:45:07 AM	(GMT --07:00) Pacific Standard Time	UC Davis	D8XSMGH1
Serial# : DE13701086		Instrument	Run		4/18/2012 10:45:07 AM	(GMT --07:00) Pacific Standard Time	UC Davis	D8XSMGH1
Firmware : C.01.069		Instrument	Run		4/18/2012 10:45:07 AM	(GMT --07:00) Pacific Standard Time	UC Davis	D8XSMGH1
Cartridge : Electrode		Instrument	Run		4/18/2012 10:45:07 AM	(GMT --07:00) Pacific Standard Time	UC Davis	D8XSMGH1