

Assay Class: High Sensitivity DNA Assay
Data Path: C:\...ts and Settings\Bioanalyzer\2012-04-19\2012-04-19_Erin2.xad

Created: 4/19/2012 1:15:39 PM
Modified: 4/19/2012 3:38:26 PM

Electrophoresis File Run Summary

Instrument Information:

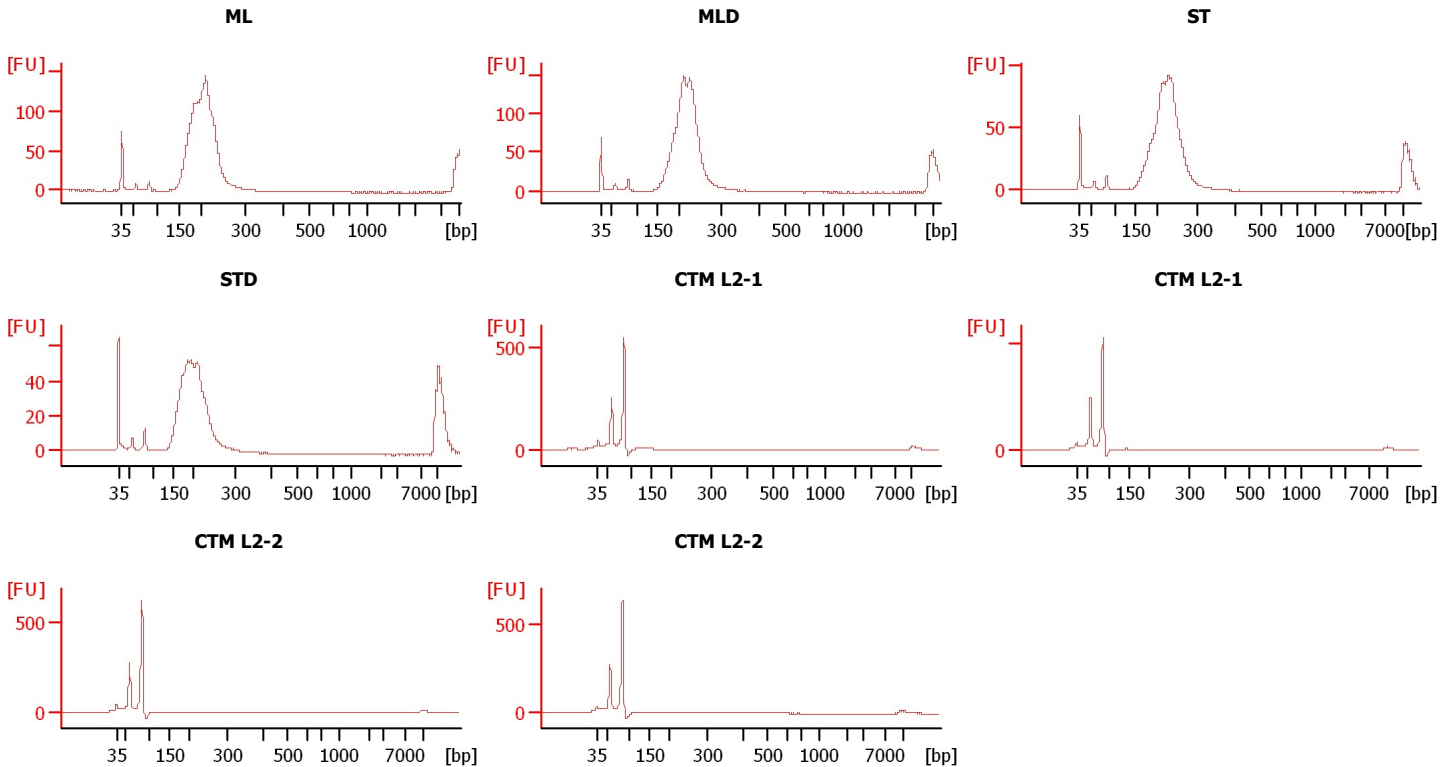
Instrument Name: DE13701086 Firmware: C.01.069
Serial#: DE13701086 Type: G2938B

Assay Information:

Assay Origin Path: C:\Program Files\Agilent\2100 bioanalyzer\2100 expert\assays\dsDNA\High Sensitivity DNA.xsy
Assay Class: High Sensitivity DNA Assay
Version: 1.03
Assay Comments: Copyright © 2003-2010 Agilent Technologies

Chip Information:

Chip Lot #:
Reagent Kit Lot #:
Chip Comments:



Assay Class: High Sensitivity DNA Assay
 Data Path: C:\...ts and Settings\Bioanalyzer\2012-04-19\2012-04-19_Erin2.xad

Created: 4/19/2012 1:15:39 PM
 Modified: 4/19/2012 3:38:26 PM

Electrophoresis File Run Summary (Chip Summary)

Sample Name	Sample Comment	Rest. Digest	Status	Observation	Result Label	Result Color
ML		<input type="checkbox"/>	✓			
MLD		<input type="checkbox"/>	✓			
ST		<input type="checkbox"/>	✓			
STD		<input type="checkbox"/>	✓			
CTM L2-1		<input type="checkbox"/>	✓			
CTM L2-1		<input type="checkbox"/>	✓			
CTM L2-2		<input type="checkbox"/>	✓			
CTM L2-2		<input type="checkbox"/>	✓			
Ladder		<input type="checkbox"/>	✓			

Chip Lot #

Reagent Kit Lot #

Chip Comments :

Assay Class: High Sensitivity DNA Assay
Data Path: C:\...ts and Settings\Bioanalyzer\2012-04-19\2012-04-19_Erin2.xad

Created: 4/19/2012 1:15:39 PM
Modified: 4/19/2012 3:38:26 PM

Electrophoresis Assay Details

General Analysis Settings

Number of Available Sample and Ladder Wells (Max.) : 12
Minimum Visible Range [s] : 32
Maximum Visible Range [s] : 138
Start Analysis Time Range [s] : 33
End Analysis Time Range [s] : 137.5
Ladder Concentration [pg/μl] : 1950
Uses Standard Area for Ladder Fragments
Lower Marker Concentration [pg/μl] : 125
Upper Marker Concentration [pg/μl] : 75
Used Upper Marker for Quantitation
Standard Curve Fit is Point to Point
Show Data Aligned to Lower and Upper Marker

Integrator Settings

Integration Start Time [s] : 33.05
Integration End Time [s] : 137
Slope Threshold : 0.8
Height Threshold [FU] : 5
Area Threshold : 0.1
Width Threshold [s] : 0.6
Baseline Plateau [s] : 0.5

Filter Settings

Filter Width [s] : 0.5
Polynomial Order : 4

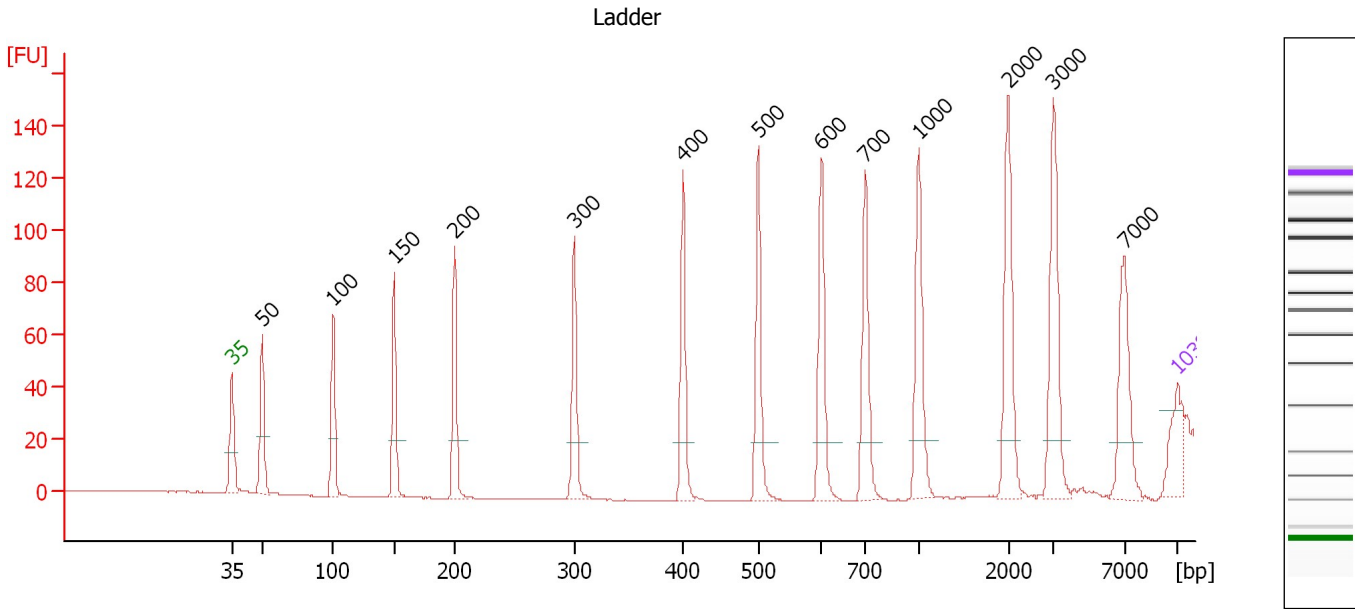
Ladder

Ladder Peak	Size	Area
1	35	160
2	50	210
3	100	208
4	150	221
5	200	242
6	300	270
7	400	305
8	500	306
9	600	336
10	700	321
11	1000	366
12	2000	413
13	3000	411
14	7000	400
15	10380	214

Assay Class: High Sensitivity DNA Assay
 Data Path: C:\...ts and Settings\Bioanalyzer\2012-04-19\2012-04-19_Erin2.xad

Created: 4/19/2012 1:15:39 PM
 Modified: 4/19/2012 3:38:26 PM

Electropherogram Summary



Overall Results for Ladder

Noise: 0.2

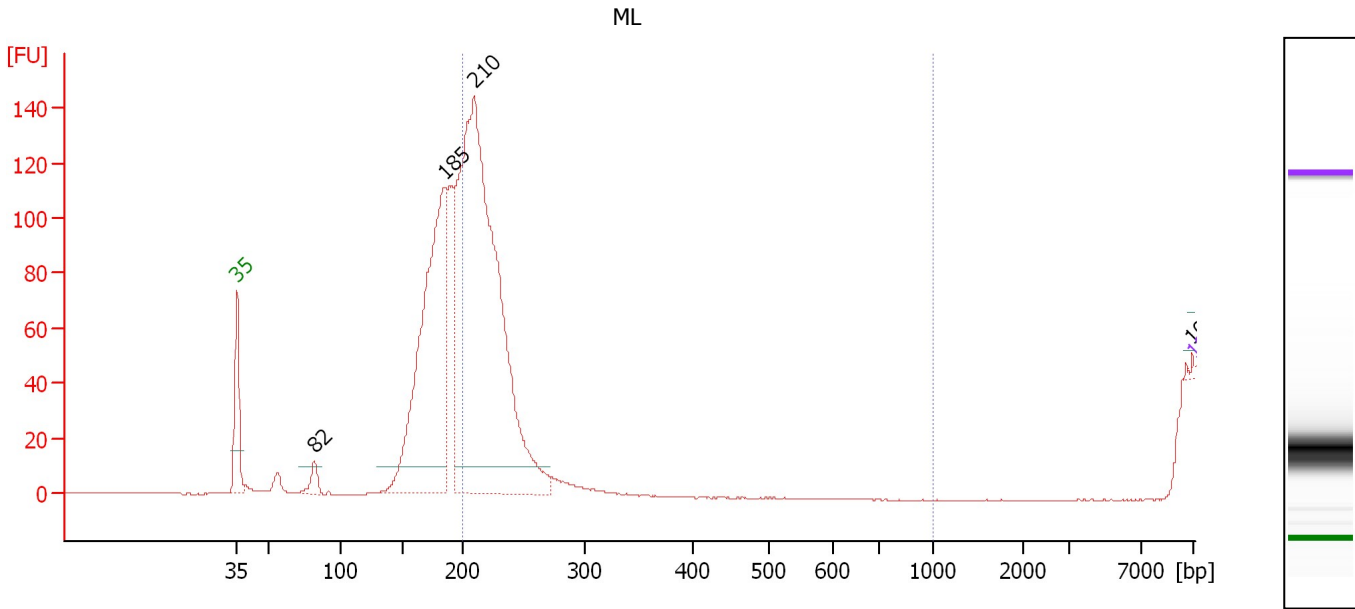
Peak table for Ladder

Peak	Size [bp]	Conc. [pg/μl]	Molarity [pmol/l]	Observations
1	35	125.00	5,411.3	Lower Marker
2	50	150.00	4,545.5	Ladder Peak
3	100	150.00	2,272.7	Ladder Peak
4	150	150.00	1,515.2	Ladder Peak
5	200	150.00	1,136.4	Ladder Peak
6	300	150.00	757.6	Ladder Peak
7	400	150.00	568.2	Ladder Peak
8	500	150.00	454.5	Ladder Peak
9	600	150.00	378.8	Ladder Peak
10	700	150.00	324.7	Ladder Peak
11	1,000	150.00	227.3	Ladder Peak
12	2,000	150.00	113.6	Ladder Peak
13	3,000	150.00	75.8	Ladder Peak
14	7,000	150.00	32.5	Ladder Peak
15	10,380	75.00	10.9	Upper Marker

Assay Class: High Sensitivity DNA Assay
 Data Path: C:\...ts and Settings\Bioanalyzer\2012-04-19\2012-04-19_Erin2.xad

Created: 4/19/2012 1:15:39 PM
 Modified: 4/19/2012 3:38:26 PM

Electropherogram Summary Continued ...



Setpoint Deviations for sample 1 : ML

Height Threshold [FU] : 10

Overall Results for sample 1 : ML

Number of peaks found: 4 Corr. Area 1: 573.5
 Noise: 0.2

Peak table for sample 1 : ML

Peak	Size [bp]	Conc. [pg/μl]	Molarity [pmol/l]	Observations
1	35	125.00	5,411.3	Lower Marker
2	82	3,914.00	71,930.7	
3	185	99,286.81	812,485.9	
4	210	191,843.83	1,386,233.4	
5	10,279	350.64	51.7	
6	10,380	75.00	10.9	Upper Marker

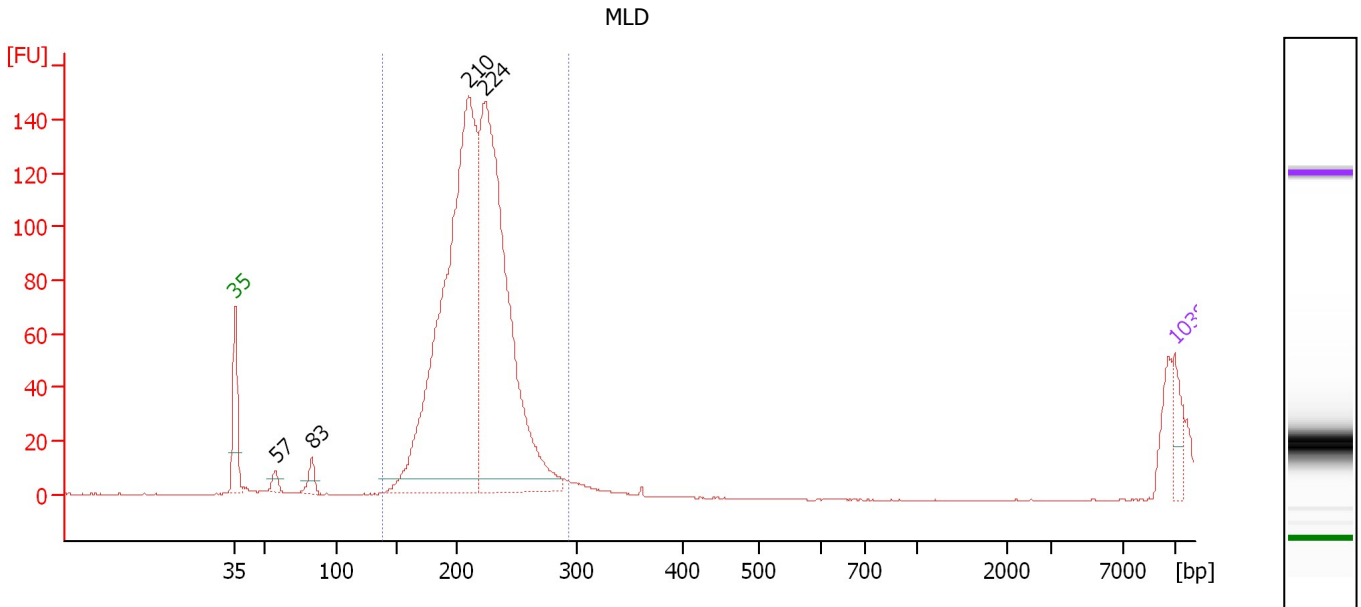
Region table for sample 1 : ML

From [bp]	Molarity [pmol/l]	Average Size [bp]	Conc. [pg/μl]	To [bp]	Corr. Area	% of Total	Size distribution in CV [%]	Color
200	867,083.7	217	123,956.46	1,000	573.5	51	5.3	Blue

Assay Class: High Sensitivity DNA Assay
 Data Path: C:\...ts and Settings\Bioanalyzer\2012-04-19\2012-04-19_Erin2.xad

Created: 4/19/2012 1:15:39 PM
 Modified: 4/19/2012 3:38:26 PM

Electropherogram Summary Continued ...



Overall Results for sample 2 : MLD

Number of peaks found: 4 Corr. Area 1: 1,218.1
 Noise: 0.2

Peak table for sample 2 : MLD

Peak	Size [bp]	Conc. [pg/μl]	Molarity [pmol/l]	Observations
1	35	125.00	5,411.3	Lower Marker
2	57	46.94	1,241.2	
3	83	82.63	1,508.1	
4	210	3,130.23	22,537.4	
5	224	2,548.56	17,250.2	
6	10,380	75.00	10.9	Upper Marker

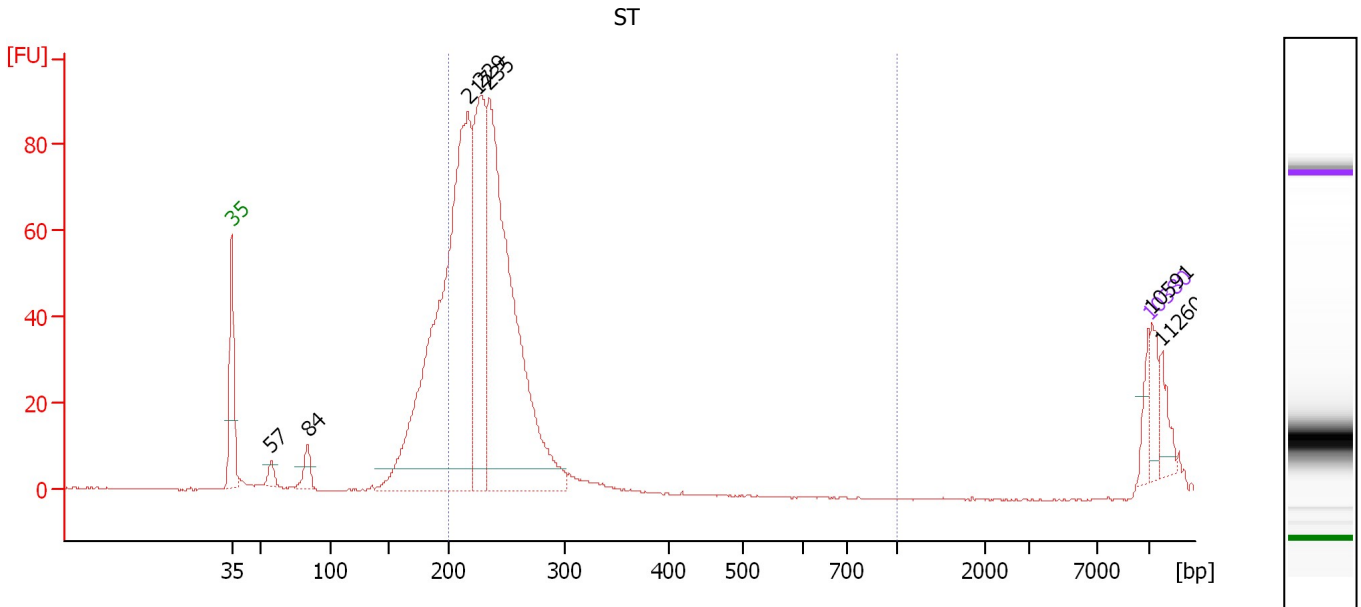
Region table for sample 2 : MLD

From [bp]	Molarity [pmol/l]	Average Size [bp]	Conc. [pg/μl]	To [bp]	Corr. Area	% of Total	Size distribution in CV [%]	Color
138	35,275.9	215	4,947.78	295	1,218.1	98	9.9	Blue

Assay Class: High Sensitivity DNA Assay
 Data Path: C:\...ts and Settings\Bioanalyzer\2012-04-19\2012-04-19_Erin2.xad

Created: 4/19/2012 1:15:39 PM
 Modified: 4/19/2012 3:38:26 PM

Electropherogram Summary Continued ...



Overall Results for sample 3 : ST

Number of peaks found: 7 Corr. Area 1: 777.7
 Noise: 0.1

Peak table for sample 3 : ST

Peak	Size [bp]	Conc. [pg/μl]	Molarity [pmol/l]	Observations
1	35	125.00	5,411.3	Lower Marker
2	57	63.52	1,680.6	
3	84	113.17	2,050.3	
4	217	3,132.18	21,839.9	
5	229	1,126.94	7,464.2	
6	235	2,502.38	16,122.0	
7	10,380	75.00	10.9	Upper Marker
8	10,591	0.00	0.0	
9	11,260	0.00	0.0	

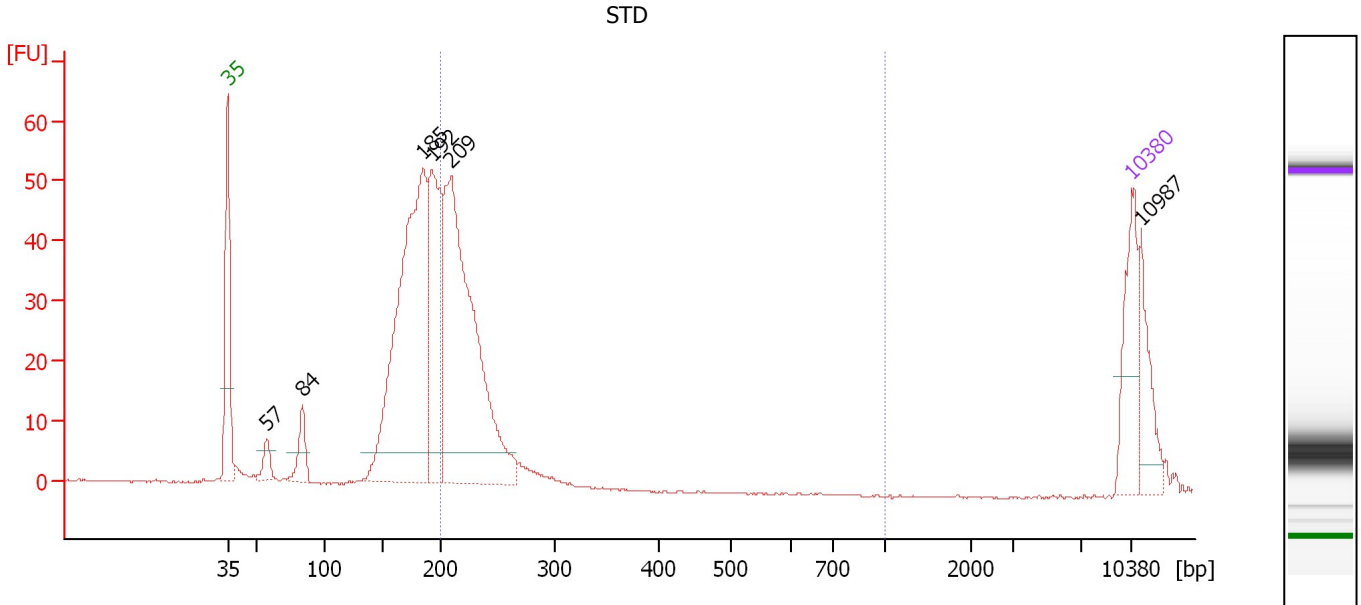
Region table for sample 3 : ST

From [bp]	Molarity [pmol/l]	Average Size [bp]	Conc. [pg/μl]	To [bp]	Corr. Area	% of Total	Size distribution in CV [%]	Color
200	34,567.1	234	5,340.97	1,000	777.7	74	9.7	Blue

Assay Class: High Sensitivity DNA Assay
 Data Path: C:\...ts and Settings\Bioanalyzer\2012-04-19\2012-04-19_Erin2.xad

Created: 4/19/2012 1:15:39 PM
 Modified: 4/19/2012 3:38:26 PM

Electropherogram Summary Continued ...



Overall Results for sample 4 : STD

Number of peaks found: 6 Corr. Area 1: 268.6
 Noise: 0.1

Peak table for sample 4 : STD

Peak	Size [bp]	Conc. [pg/μl]	Molarity [pmol/l]	Observations
1	35	125.00	5,411.3	Lower Marker
2	57	29.05	768.7	
3	84	50.73	919.5	
4	185	627.45	5,144.2	
5	192	265.41	2,092.2	
6	209	608.49	4,403.6	
7	10,380	75.00	10.9	Upper Marker
8	10,987	0.00	0.0	

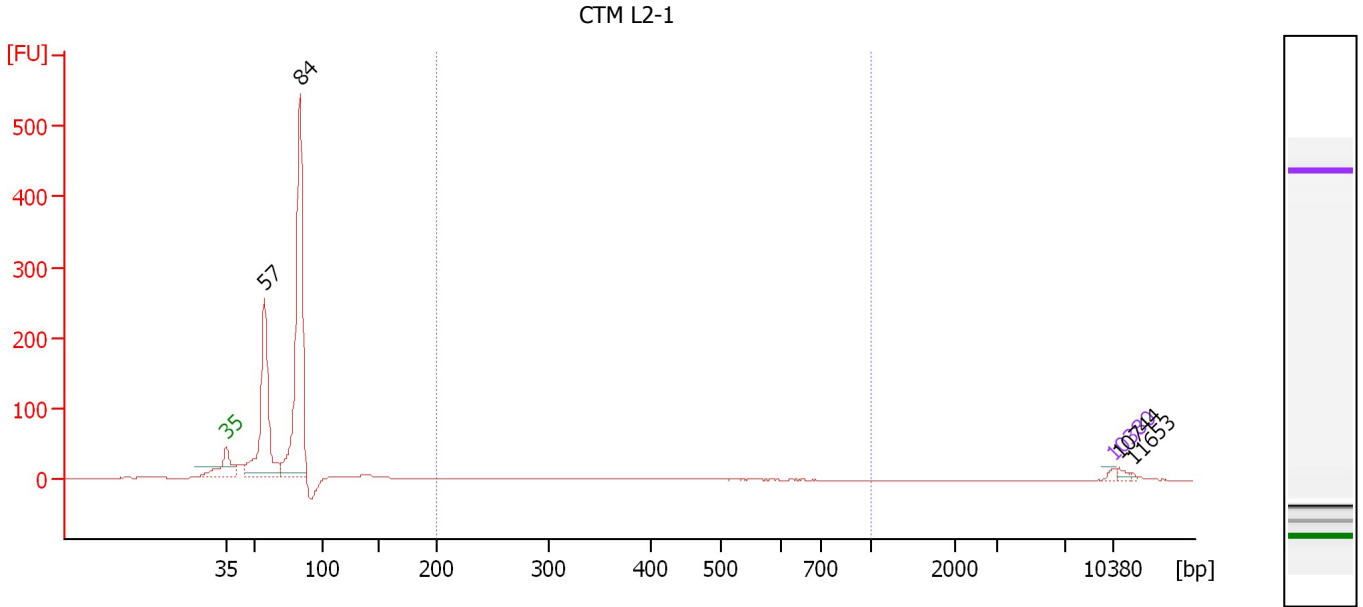
Region table for sample 4 : STD

From [bp]	Molarity [pmol/l]	Average Size [bp]	Conc. [pg/μl]	To [bp]	Corr. Area	% of Total	Size distribution in CV [%]	Color
200	4,416.2	223	648.68	1,000	268.6	39	8.5	Blue

Assay Class: High Sensitivity DNA Assay
 Data Path: C:\...ts and Settings\Bioanalyzer\2012-04-19\2012-04-19_Erin2.xad

Created: 4/19/2012 1:15:39 PM
 Modified: 4/19/2012 3:38:26 PM

Electropherogram Summary Continued ...



Overall Results for sample 5 : CTM L2-1

Number of peaks found: 4 Corr. Area 1: 1.2
 Noise: 0.1

Peak table for sample 5 : CTM L2-1

Peak	Size [bp]	Conc. [pg/μl]	Molarity [pmol/l]	Observations
1	35	125.00	5,411.3	Lower Marker
2	57	6,372.06	169,345.0	
3	84	10,772.96	194,666.1	
4	10,380	75.00	10.9	Upper Marker
5	10,744	0.00	0.0	
6	11,653	0.00	0.0	

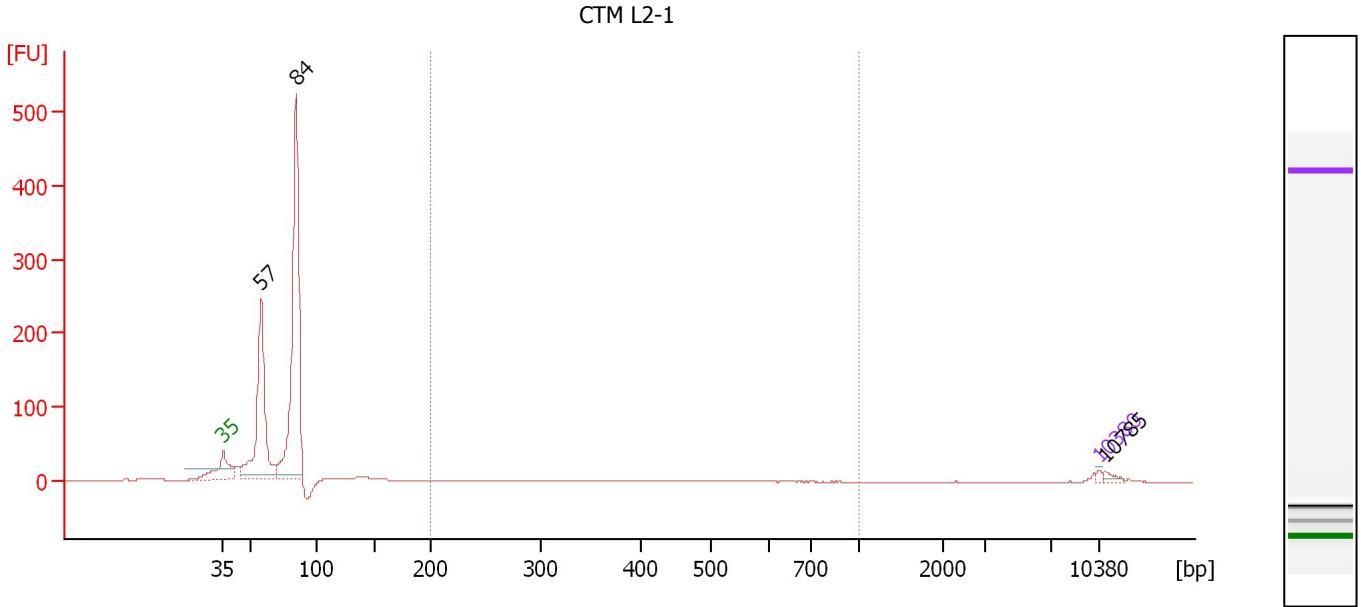
Region table for sample 5 : CTM L2-1

From [bp]	Molarity [pmol/l]	Average Size [bp]	Conc. [pg/μl]	To [bp]	Corr. Area	% of Total	Size distribution in CV [%]	Color
200	96.2	230	14.61	1,000	1.2	0	8.9	Blue

Assay Class: High Sensitivity DNA Assay
 Data Path: C:\...ts and Settings\Bioanalyzer\2012-04-19\2012-04-19_Erin2.xad

Created: 4/19/2012 1:15:39 PM
 Modified: 4/19/2012 3:38:26 PM

Electropherogram Summary Continued ...



Overall Results for sample 6 : CTM L2-1

Number of peaks found: 3 Corr. Area 1: 1.3
 Noise: 0.2

Peak table for sample 6 : CTM L2-1

Peak	Size [bp]	Conc. [pg/μl]	Molarity [pmol/l]	Observations
1	35	125.00	5,411.3	Lower Marker
2	57	9,212.34	243,277.8	
3	84	15,216.78	273,982.3	
4	10,380	75.00	10.9	Upper Marker
5	10,785	0.00	0.0	

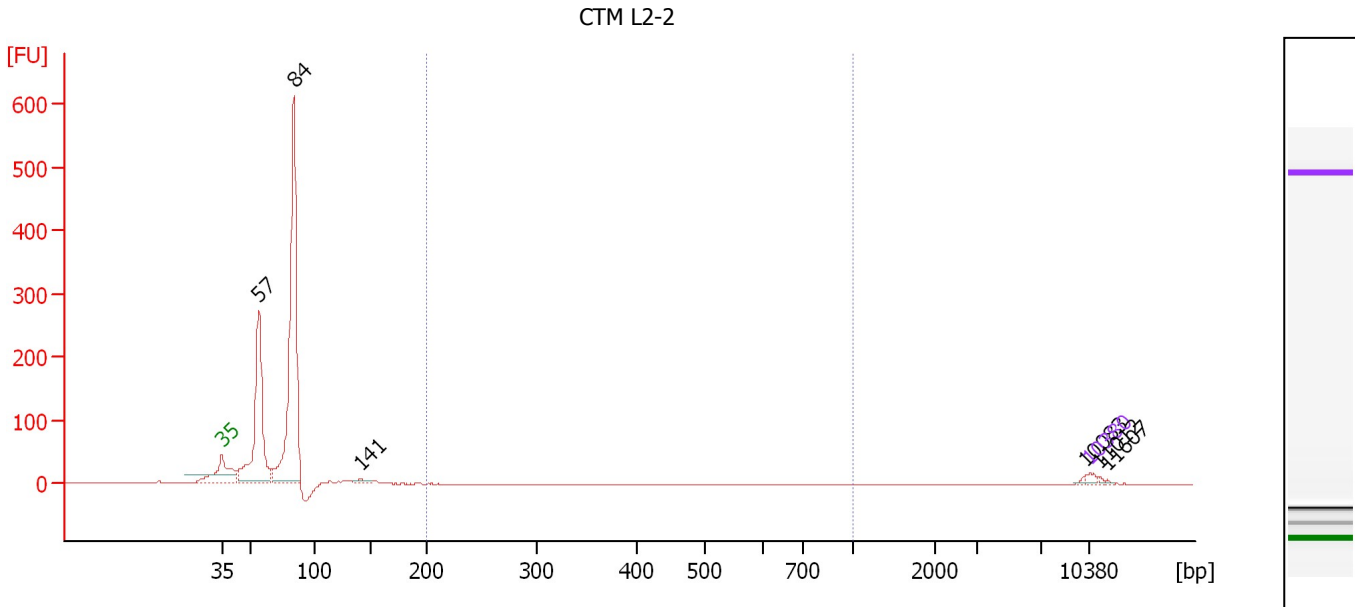
Region table for sample 6 : CTM L2-1

From [bp]	Molarity [pmol/l]	Average Size [bp]	Conc. [pg/μl]	To [bp]	Corr. Area	% of Total	Size distribution in CV [%]	Color
200	147.2	272	23.52	1,000	1.3	0	42.9	Blue

Assay Class: High Sensitivity DNA Assay
 Data Path: C:\...ts and Settings\Bioanalyzer\2012-04-19\2012-04-19_Erin2.xad

Created: 4/19/2012 1:15:39 PM
 Modified: 4/19/2012 3:38:26 PM

Electropherogram Summary Continued ...



Overall Results for sample 7 : CTM L2-2

Number of peaks found: 6 Corr. Area 1: 3.7
 Noise: 0.1

Peak table for sample 7 : CTM L2-2

Peak	Size [bp]	Conc. [pg/μl]	Molarity [pmol/l]	Observations
1	35	125.00	5,411.3	Lower Marker
2	57	5,218.17	138,147.1	
3	84	9,220.53	166,625.7	
4	141	163.77	1,760.1	
5	10,083	38.33	5.8	
6	10,380	75.00	10.9	Upper Marker
7	11,012	0.00	0.0	
8	11,607	0.00	0.0	

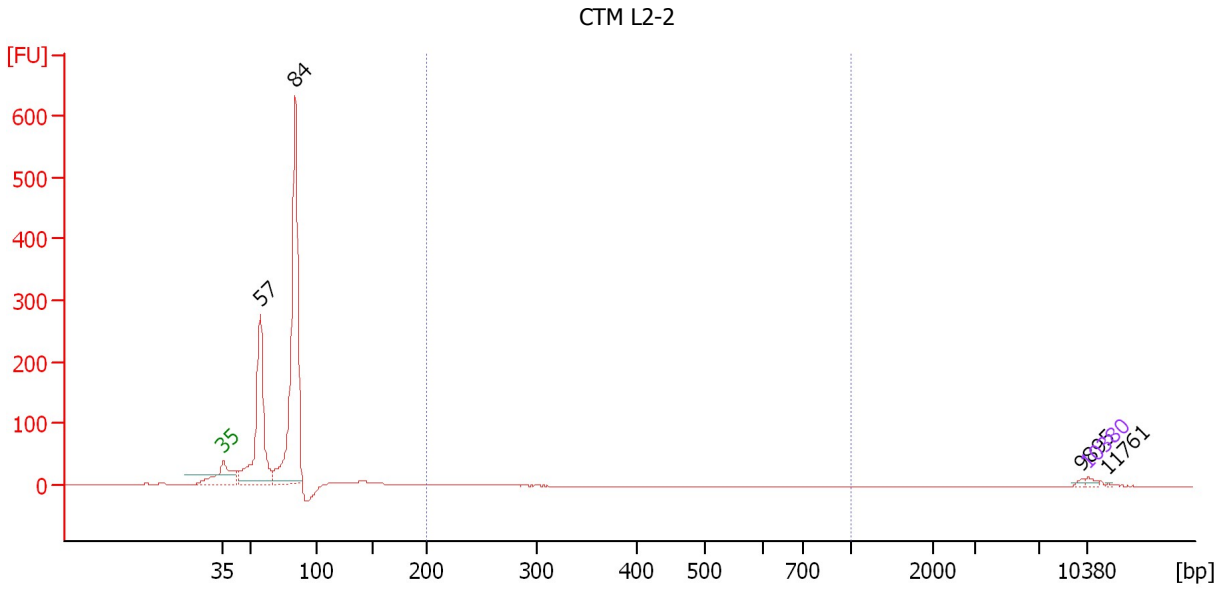
Region table for sample 7 : CTM L2-2

From [bp]	Molarity [pmol/l]	Average Size [bp]	Conc. [pg/μl]	To [bp]	Corr. Area	% of Total	Size distribution in CV [%]	Color
200	222.3	234	34.13	1,000	3.7	0	12.4	Blue

Assay Class: High Sensitivity DNA Assay
 Data Path: C:\...ts and Settings\Bioanalyzer\2012-04-19\2012-04-19_Erin2.xad

Created: 4/19/2012 1:15:39 PM
 Modified: 4/19/2012 3:38:26 PM

Electropherogram Summary Continued ...



Overall Results for sample 8 : CTM L2-2

Number of peaks found: 4 Corr. Area 1: 2.0
 Noise: 0.1

Peak table for sample 8 : CTM L2-2

Peak	Size [bp]	Conc. [pg/μl]	Molarity [pmol/l]	Observations
1	35	125.00	5,411.3	Lower Marker
2	57	6,052.00	161,080.5	
3	84	10,808.90	194,854.2	
4	9,895	44.37	6.8	
5	10,380	75.00	10.9	Upper Marker
6	11,761	0.00	0.0	

Region table for sample 8 : CTM L2-2

From [bp]	Molarity [pmol/l]	Average Size [bp]	Conc. [pg/μl]	To [bp]	Corr. Area	% of Total	Size distribution in CV [%]	Color
200	144.9	223	21.33	1,000	2.0	0	7.9	Blue

Assay Class: High Sensitivity DNA Assay
Data Path: C:\...ts and Settings\Bioanalyzer\2012-04-19\2012-04-19_Erin2.xad

Created: 4/19/2012 1:15:39 PM
Modified: 4/19/2012 3:38:26 PM

Gel Image

Assay Class: High Sensitivity DNA Assay
 Data Path: C:\...ts and Settings\Bioanalyzer\2012-04-19\2012-04-19_Erin2.xad

Created: 4/19/2012 1:15:39 PM
 Modified: 4/19/2012 3:38:26 PM

Run Logbook

Description	Number	Source	Category	Sub Category	Time	Time Zone	User	Host
Run aborted on port 1		Instrument	Run		4/19/2012 1:50:04 PM	(GMT --07:00) Pacific Standard Time	UC Davis	D8XSMGH1
Run started on port 1 (File: C:\Documents and Settings\Bioanalyzer\2012-04-19\2012-04-19_004.xad)		Instrument	Run		4/19/2012 1:15:39 PM	(GMT --07:00) Pacific Standard Time	UC Davis	D8XSMGH1
Product Number : G2938B		Instrument	Run		4/19/2012 1:15:39 PM	(GMT --07:00) Pacific Standard Time	UC Davis	D8XSMGH1
Name :		Instrument	Run		4/19/2012 1:15:39 PM	(GMT --07:00) Pacific Standard Time	UC Davis	D8XSMGH1
Vendor : Agilent Technologies		Instrument	Run		4/19/2012 1:15:39 PM	(GMT --07:00) Pacific Standard Time	UC Davis	D8XSMGH1
Serial# : DE13701086		Instrument	Run		4/19/2012 1:15:39 PM	(GMT --07:00) Pacific Standard Time	UC Davis	D8XSMGH1
Firmware : C.01.069		Instrument	Run		4/19/2012 1:15:39 PM	(GMT --07:00) Pacific Standard Time	UC Davis	D8XSMGH1
Cartridge : Electrode		Instrument	Run		4/19/2012 1:15:39 PM	(GMT --07:00) Pacific Standard Time	UC Davis	D8XSMGH1