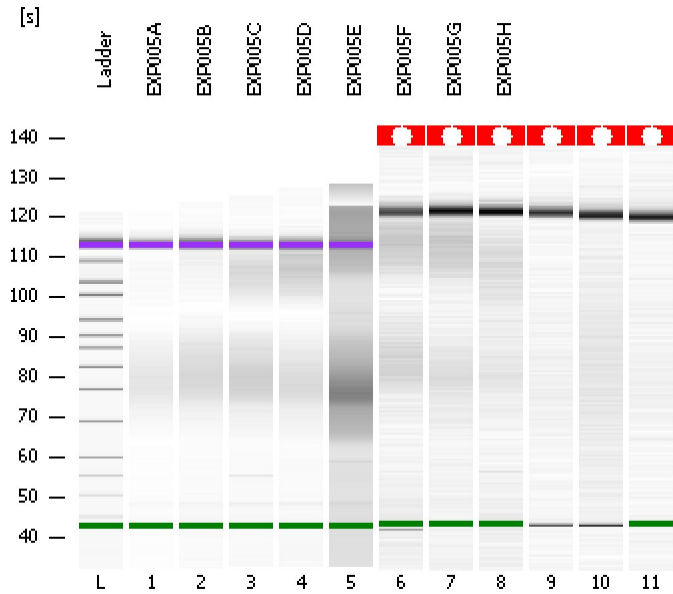


Assay Class: High Sensitivity DNA Assay  
Data Path: C:\...ents and Settings\Bioanalyzer\2012-04-19\2012-04-19\_001.xad

Created: 4/19/2012 10:41:40 AM  
Modified: 4/19/2012 11:31:31 AM

**Electrophoresis File Run Summary**



Instrument Information:

Instrument Name: DE13701086      Firmware: C.01.069  
Serial#: DE13701086      Type: G2938B

Assay Information:

Assay Origin Path: C:\Program Files\Agilent\2100 bioanalyzer\2100 expert\assays\dsDNA\High Sensitivity DNA.xsy  
Assay Class: High Sensitivity DNA Assay  
Version: 1.03  
Assay Comments: Copyright © 2003-2010 Agilent Technologies

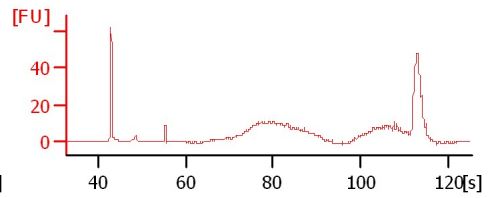
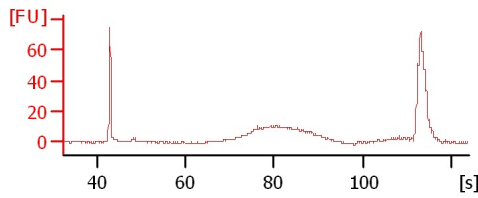
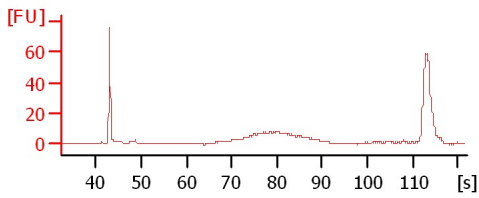
Chip Information:

Chip Lot #:   
Reagent Kit Lot #:   
Chip Comments:

EXP005A

EXP005B

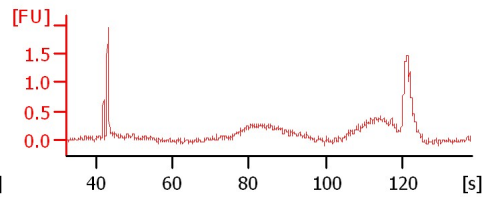
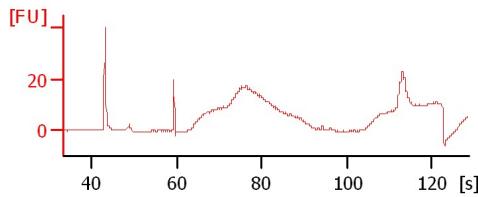
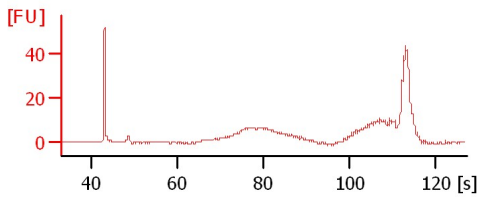
EXP005C



EXP005D

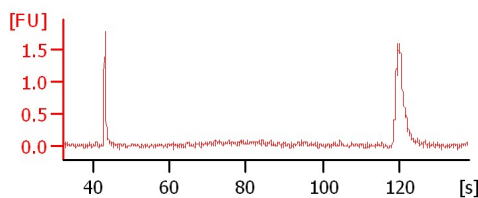
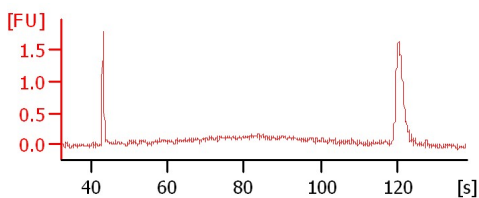
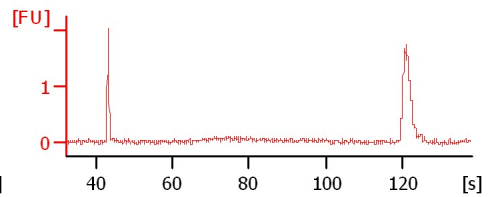
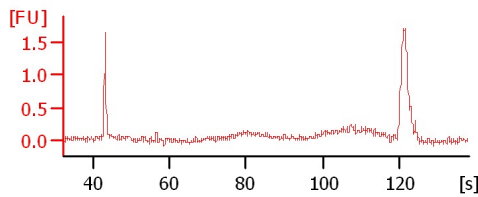
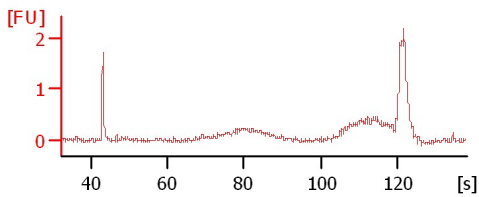
EXP005E

EXP005F



EXP005G

EXP005H



Assay Class: High Sensitivity DNA Assay  
Data Path: C:\...ents and Settings\Bioanalyzer\2012-04-19\2012-04-19\_001.xad

Created: 4/19/2012 10:41:40 AM  
Modified: 4/19/2012 11:31:31 AM

**Electrophoresis File Run Summary (Chip Summary)**

Sample Name	Sample Comment	Rest. Digest	Status	Observation	Result Label	Result Color
EXP005A		<input type="checkbox"/>	✓			
EXP005B		<input type="checkbox"/>	✓			
EXP005C		<input type="checkbox"/>	✓			
EXP005D		<input type="checkbox"/>	✓			
EXP005E		<input type="checkbox"/>	✓			
EXP005F		<input type="checkbox"/>	✓			
EXP005G		<input type="checkbox"/>	✓			
EXP005H		<input type="checkbox"/>	✓			
		<input type="checkbox"/>	✓			
		<input type="checkbox"/>	✓			
		<input type="checkbox"/>	✓			
Ladder		<input type="checkbox"/>	✓			

**Chip Lot #**

**Reagent Kit Lot #**

**Chip Comments :**

Assay Class: High Sensitivity DNA Assay  
Data Path: C:\...ents and Settings\Bioanalyzer\2012-04-19\2012-04-19\_001.xad

Created: 4/19/2012 10:41:40 AM  
Modified: 4/19/2012 11:31:31 AM

**Electrophoresis Assay Details**

**General Analysis Settings**

Number of Available Sample and Ladder Wells (Max.) : 12  
Minimum Visible Range [s] : 32  
Maximum Visible Range [s] : 138  
Start Analysis Time Range [s] : 33  
End Analysis Time Range [s] : 137.5  
Ladder Concentration [pg/μl] : 1950  
Uses Standard Area for Ladder Fragments  
Lower Marker Concentration [pg/μl] : 125  
Upper Marker Concentration [pg/μl] : 75  
Used Upper Marker for Quantitation  
Standard Curve Fit is Point to Point  
Show Data Aligned to Lower and Upper Marker

**Integrator Settings**

Integration Start Time [s] : 33.05  
Integration End Time [s] : 137  
Slope Threshold : 0.8  
Height Threshold [FU] : 5  
Area Threshold : 0.1  
Width Threshold [s] : 0.6  
Baseline Plateau [s] : 0.5

**Filter Settings**

Filter Width [s] : 0.5  
Polynomial Order : 4

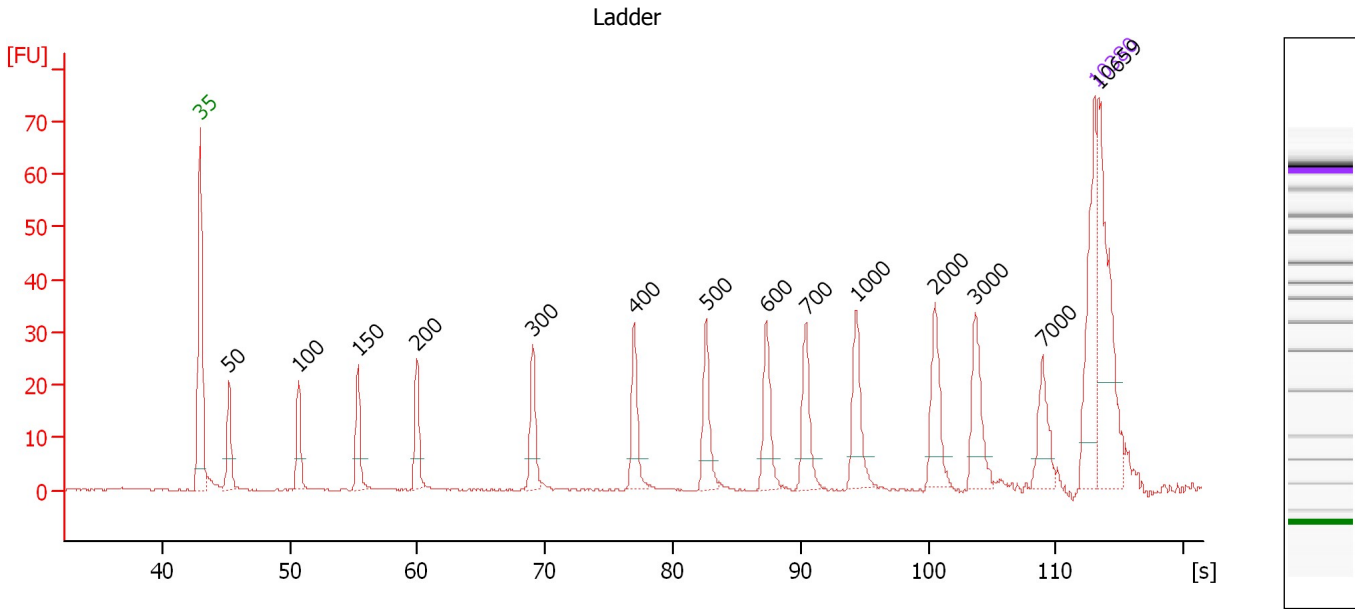
**Ladder**

Ladder Peak	Size	Area
1	35	160
2	50	210
3	100	208
4	150	221
5	200	242
6	300	270
7	400	305
8	500	306
9	600	336
10	700	321
11	1000	366
12	2000	413
13	3000	411
14	7000	400
15	10380	214

Assay Class: High Sensitivity DNA Assay  
 Data Path: C:\...ents and Settings\Bioanalyzer\2012-04-19\2012-04-19\_001.xad

Created: 4/19/2012 10:41:40 AM  
 Modified: 4/19/2012 11:31:31 AM

**Electropherogram Summary**



**Overall Results for Ladder**

Noise: 0.1

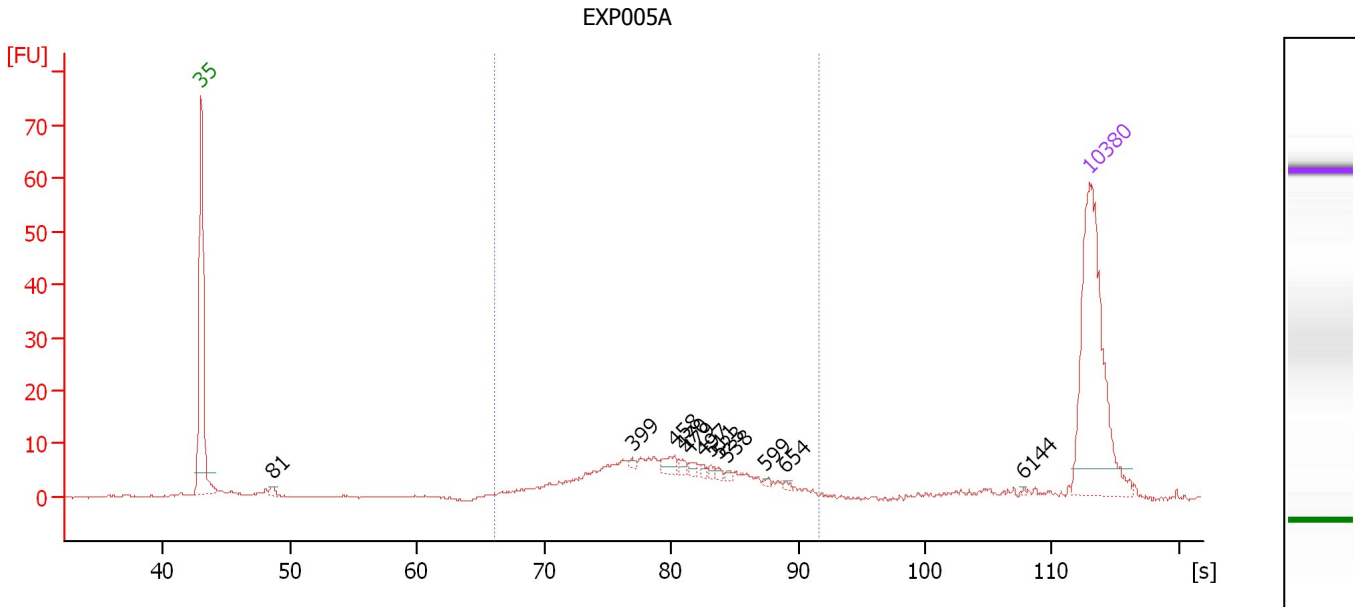
**Peak table for Ladder**

Peak	Size [bp]	Conc. [pg/μl]	Molarity [pmol/l]	Observations
1	35	125.00	5,411.3	Lower Marker
2	50	150.00	4,545.5	Ladder Peak
3	100	150.00	2,272.7	Ladder Peak
4	150	150.00	1,515.2	Ladder Peak
5	200	150.00	1,136.4	Ladder Peak
6	300	150.00	757.6	Ladder Peak
7	400	150.00	568.2	Ladder Peak
8	500	150.00	454.5	Ladder Peak
9	600	150.00	378.8	Ladder Peak
10	700	150.00	324.7	Ladder Peak
11	1,000	150.00	227.3	Ladder Peak
12	2,000	150.00	113.6	Ladder Peak
13	3,000	150.00	75.8	Ladder Peak
14	7,000	150.00	32.5	Ladder Peak
15	10,380	75.00	10.9	Upper Marker
16	10,659	0.00	0.0	

Assay Class: High Sensitivity DNA Assay  
 Data Path: C:\...ents and Settings\Bioanalyzer\2012-04-19\2012-04-19\_001.xad

Created: 4/19/2012 10:41:40 AM  
 Modified: 4/19/2012 11:31:31 AM

**Electropherogram Summary Continued ...**



**Setpoint Deviations for sample 1 : EXP005A**

Height Threshold [FU] : 1.5

**Overall Results for sample 1 : EXP005A**

Number of peaks found: 12      Corr. Area 1: 146.2  
 Noise: 0.1

**Peak table for sample 1 : EXP005A**

Peak	Size [bp]	Conc. [pg/μl]	Molarity [pmol/l]	Observations
1	35	125.00	5,411.3	Lower Marker
2	81	2.89	53.9	
3	399	1.23	4.7	
4	458	5.00	16.5	
5	470	2.31	7.5	
6	479	2.24	7.1	
7	497	1.67	5.1	
8	511	1.52	4.5	
9	523	1.49	4.3	
10	538	1.54	4.3	
11	599	1.02	2.6	
12	654	0.88	2.0	
13	6,144	0.35	0.1	
14	10,380	75.00	10.9	Upper Marker

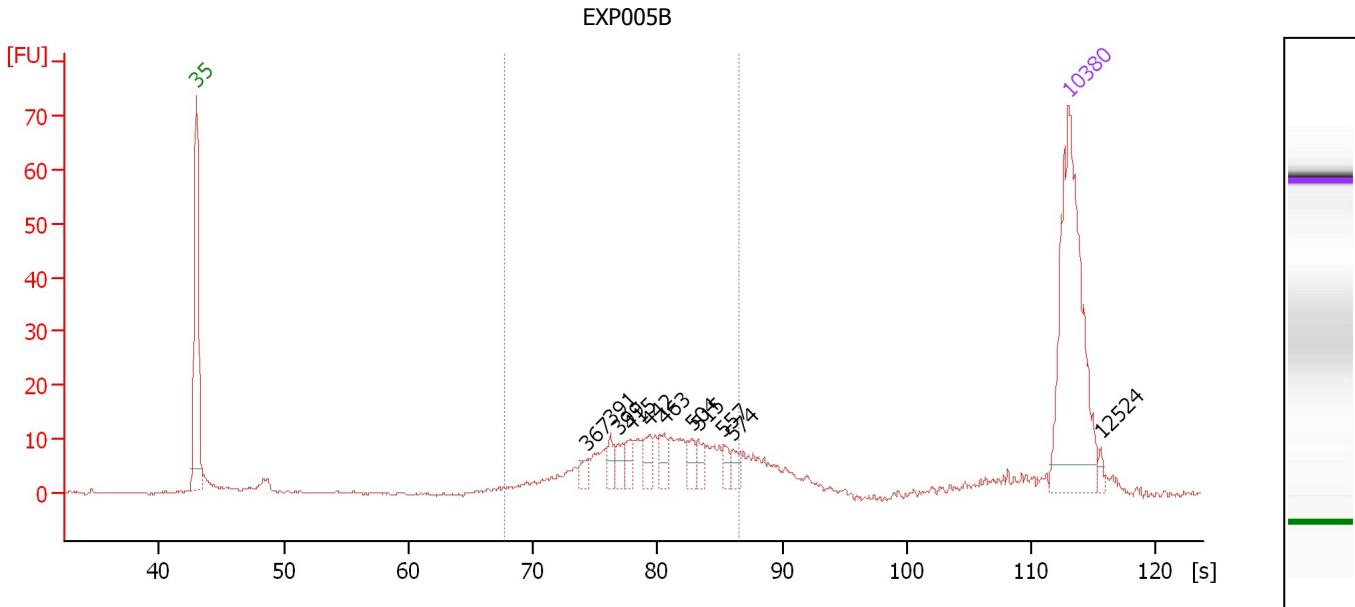
**Region table for sample 1 : EXP005A**

From [bp]	Molarity [pmol/l]	Average Size [bp]	Conc. [pg/μl]	To [bp]	Corr. Area	% of Total	Size distribution in CV [%]	Color
268	521.6	455	146.94	790	146.2	83	21.7	Blue

Assay Class: High Sensitivity DNA Assay  
 Data Path: C:\...ents and Settings\Bioanalyzer\2012-04-19\2012-04-19\_001.xad

Created: 4/19/2012 10:41:40 AM  
 Modified: 4/19/2012 11:31:31 AM

**Electropherogram Summary Continued ...**



**Overall Results for sample 2 : EXP005B**

Number of peaks found: 11                      Corr. Area 1: 173.4  
 Noise: 0.2

**Peak table for sample 2 : EXP005B**

Peak	Size [bp]	Conc. [pg/μl]	Molarity [pmol/l]	Observations
1	35	125.00	5,411.3	Lower Marker
2	367	5.61	23.2	
3	391	5.95	23.1	
4	399	6.70	25.5	
5	415	6.40	23.4	
6	442	8.09	27.7	
7	463	8.22	26.9	
8	504	6.04	18.2	
9	515	6.75	19.9	
10	557	5.05	13.7	
11	574	5.35	14.1	
12	10,380	75.00	10.9	Upper Marker
13	12,524	0.00	0.0	

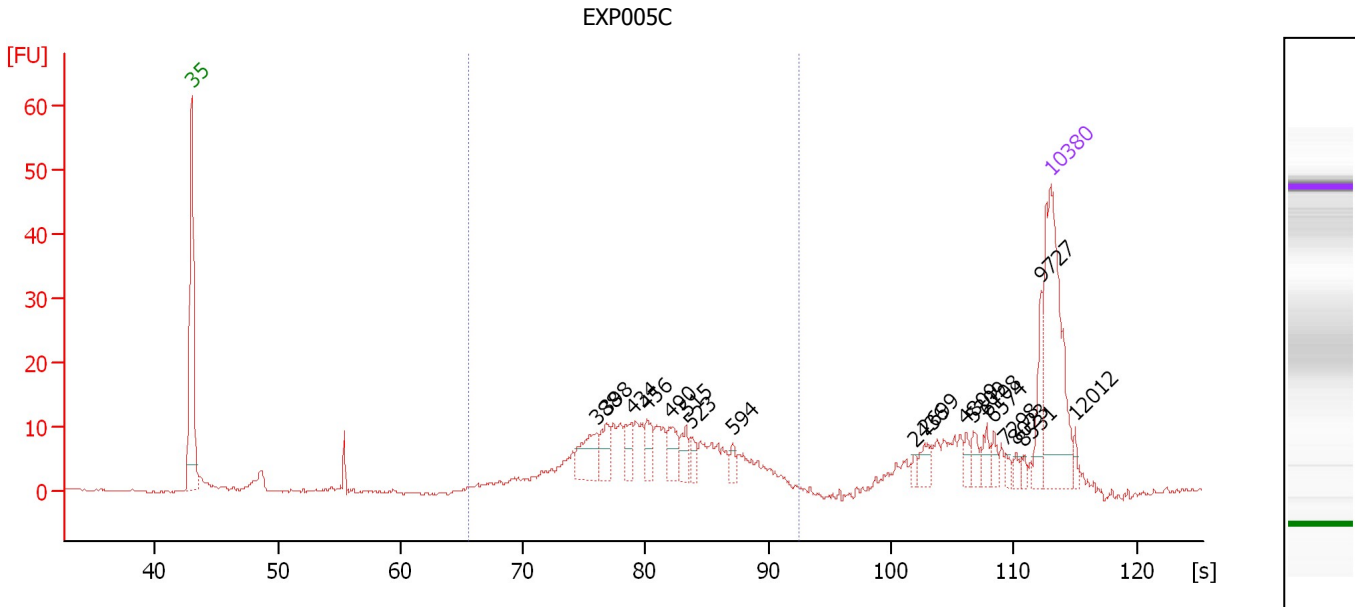
**Region table for sample 2 : EXP005B**

From [bp]	Molarity [pmol/l]	Average Size [bp]	Conc. [pg/μl]	To [bp]	Corr. Area	% of Total	Size distribution in CV [%]	Color
285	501.1	447	142.48	582	173.4	68	16.0	Blue

Assay Class: High Sensitivity DNA Assay  
 Data Path: C:\...ents and Settings\Bioanalyzer\2012-04-19\2012-04-19\_001.xad

Created: 4/19/2012 10:41:40 AM  
 Modified: 4/19/2012 11:31:31 AM

**Electropherogram Summary Continued ...**



**Overall Results for sample 3 : EXP005C**

Number of peaks found: 19                      Corr. Area 1: 193.5  
 Noise: 0.2

**Peak table for sample 3 : EXP005C**

Peak	Size [bp]	Conc. [pg/μl]	Molarity [pmol/l]	Observations
1	35	125.00	5,411.3	Lower Marker
2	388	26.69	104.3	
3	398	15.50	59.1	
4	434	12.96	45.3	
5	456	13.83	46.0	
6	490	16.19	50.1	
7	515	11.49	33.8	
8	523	7.58	22.0	
9	594	4.94	12.6	
10	2,436	2.89	1.8	
11	2,699	7.23	4.1	
12	4,809	4.96	1.6	
13	5,309	7.15	2.0	
14	6,108	7.03	1.7	
15	6,574	5.28	1.2	
16	7,298	3.09	0.6	
17	8,023	3.23	0.6	
18	8,531	2.94	0.5	
19	9,727	15.92	2.5	
20	10,380	75.00	10.9	Upper Marker
21	12,012	0.00	0.0	

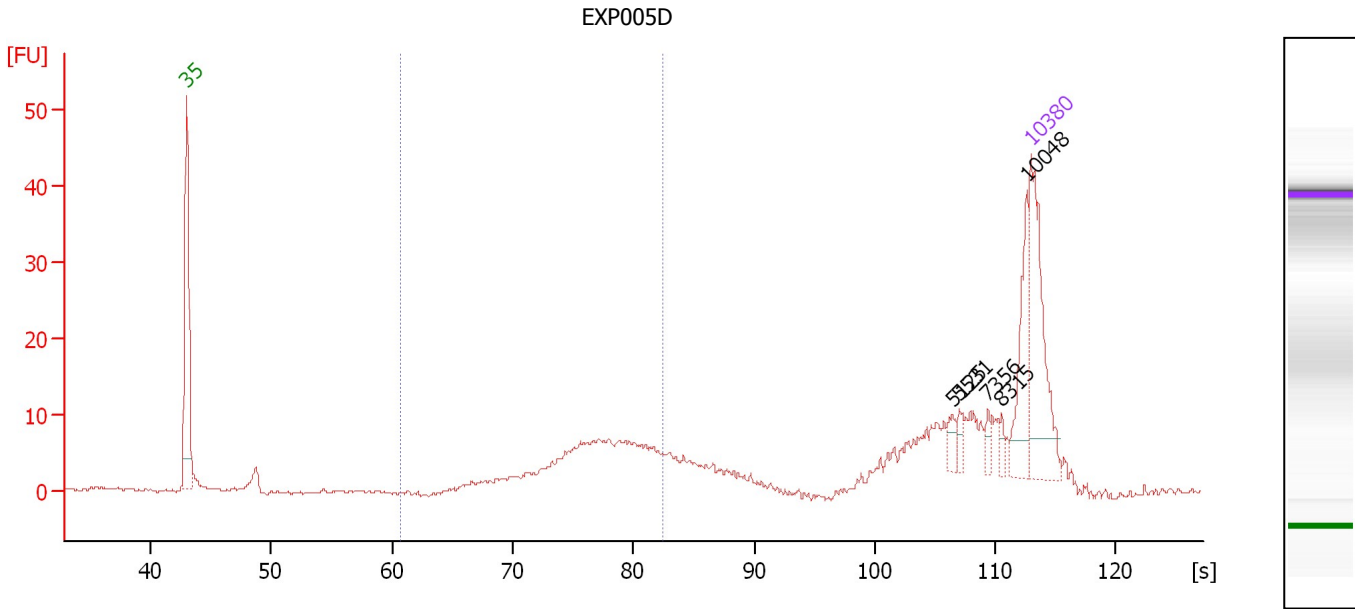
**Region table for sample 3 : EXP005C**

From [bp]	Molarity [pmol/l]	Average Size [bp]	Conc. [pg/μl]	To [bp]	Corr. Area	% of Total	Size distribution in CV [%]	Color
262	1,038.9	471	303.54	860	193.5	64	21.4	Blue

Assay Class: High Sensitivity DNA Assay  
 Data Path: C:\...ents and Settings\Bioanalyzer\2012-04-19\2012-04-19\_001.xad

Created: 4/19/2012 10:41:40 AM  
 Modified: 4/19/2012 11:31:31 AM

**Electropherogram Summary Continued ...**



**Overall Results for sample 4 : EXP005D**

Number of peaks found: 5                      Corr. Area 1: 91.3  
 Noise: 0.2

**Peak table for sample 4 : EXP005D**

Peak	Size [bp]	Conc. [pg/μl]	Molarity [pmol/l]	Observations
1	35	125.00	5,411.3	Lower Marker
2	5,125	8.01	2.4	
3	5,531	6.72	1.8	
4	7,356	6.02	1.2	
5	8,315	5.31	1.0	
6	10,048	38.73	5.8	
7	10,380	75.00	10.9	Upper Marker

**Region table for sample 4 : EXP005D**

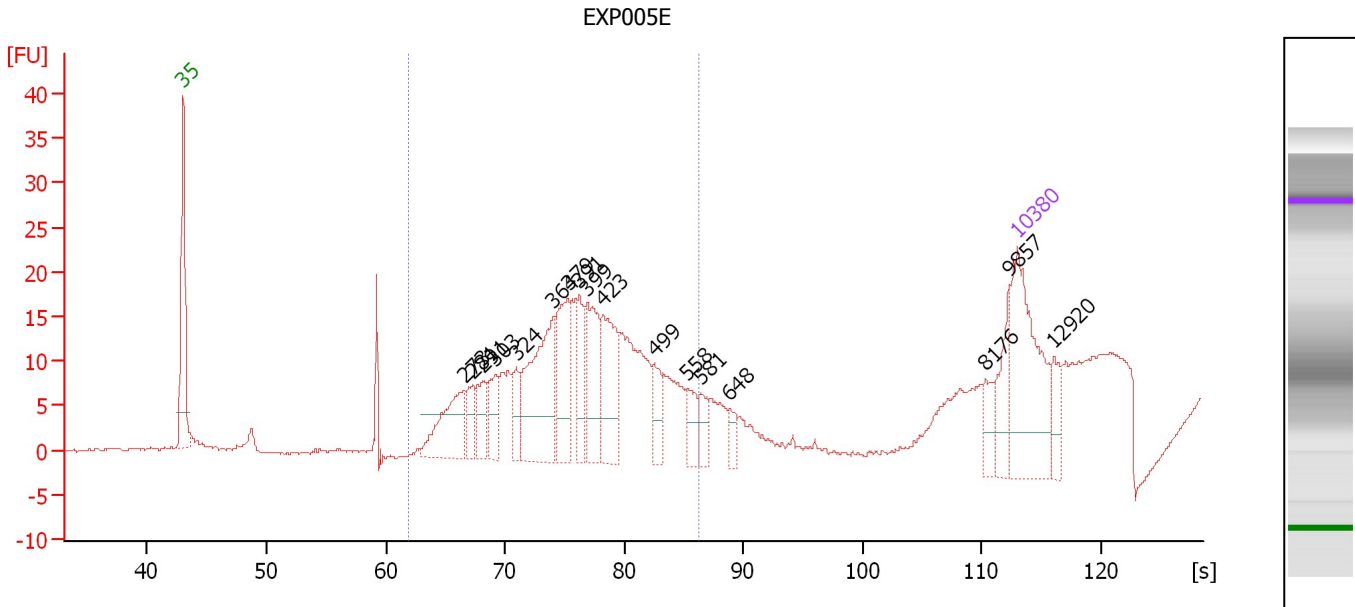
From [bp]	Molarity [pmol/l]	Average Size [bp]	Conc. [pg/μl]	To [bp]	Corr. Area	% of Total	Size distribution in CV [%]	Color
208	731.2	400	187.33	497	91.3	36	14.1	Blue



Assay Class: High Sensitivity DNA Assay  
 Data Path: C:\...ents and Settings\Bioanalyzer\2012-04-19\2012-04-19\_001.xad

Created: 4/19/2012 10:41:40 AM  
 Modified: 4/19/2012 11:31:31 AM

**Electropherogram Summary Continued ...**



**Overall Results for sample 5 : EXP005E**

Number of peaks found: 17                      Corr. Area 1: 253.7  
 Noise: 0.0

**Peak table for sample 5 : EXP005E**

Peak	Size [bp]	Conc. [pg/μl]	Molarity [pmol/l]	Observations
1	35	125.00	5,411.3	Lower Marker
2	273	60.11	333.6	
3	281	18.04	97.3	
4	291	23.58	122.8	
5	303	23.37	117.0	
6	324	17.60	82.2	
7	364	97.44	405.7	
8	379	56.38	225.3	
9	391	31.45	122.0	
10	399	52.22	198.3	
11	423	59.47	213.2	
12	499	20.49	62.2	
13	558	17.57	47.7	
14	581	12.44	32.4	
15	648	9.62	22.5	
16	8,176	12.37	2.3	
17	9,857	23.09	3.5	
18	10,380	75.00	10.9	Upper Marker
19	12,920	0.00	0.0	

**Region table for sample 5 : EXP005E**

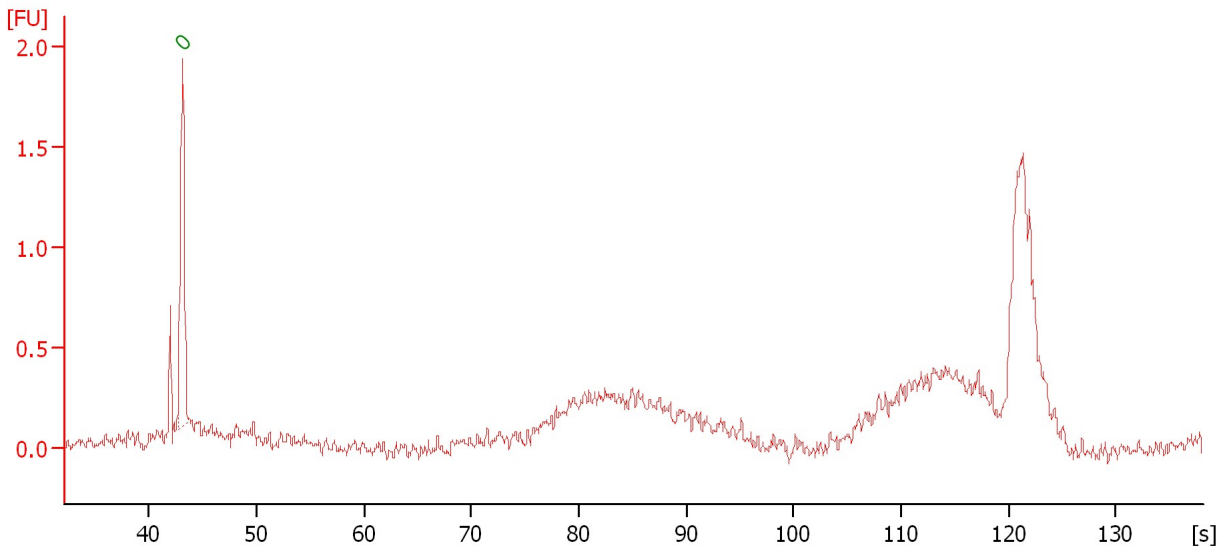
From [bp]	Molarity [pmol/l]	Average Size [bp]	Conc. [pg/μl]	To [bp]	Corr. Area	% of Total	Size distribution in CV [%]	Color
223	1,951.8	395	481.52	578	253.7	77	19.1	Blue

Assay Class: High Sensitivity DNA Assay  
Data Path: C:\...ents and Settings\Bioanalyzer\2012-04-19\2012-04-19\_001.xad

Created: 4/19/2012 10:41:40 AM  
Modified: 4/19/2012 11:31:31 AM

**Electropherogram Summary Continued ...**

EXP005F



**Setpoint Deviations for sample 6 : EXP005F**

Height Threshold [FU] :	0.1	Baseline Plateau [s] :	0.6
Width Threshold [s] :	0.5		

**Overall Results for sample 6 : EXP005F**

Number of peaks found:	0	Noise:	0.0
------------------------	---	--------	-----

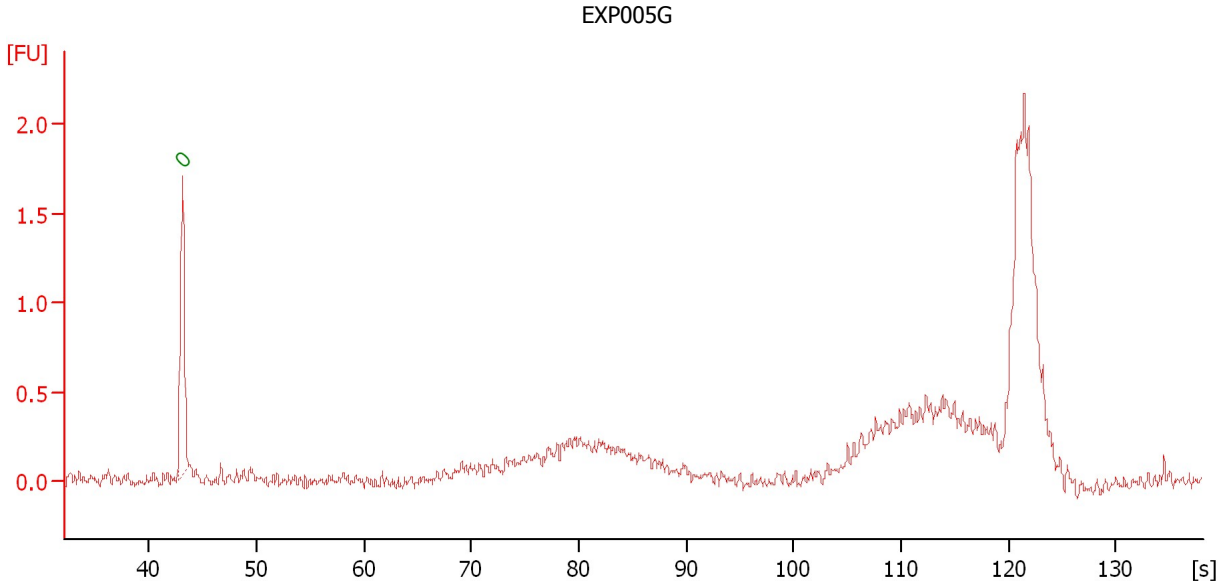
**Peak table for sample 6 : EXP005F**

Peak	Size [bp]	Conc. [pg/μl]	Molarity [pmol/l]	Observations
1	◀ 0	0.00	0.0	Lower Marker

Assay Class: High Sensitivity DNA Assay  
Data Path: C:\...ents and Settings\Bioanalyzer\2012-04-19\2012-04-19\_001.xad

Created: 4/19/2012 10:41:40 AM  
Modified: 4/19/2012 11:31:31 AM

**Electropherogram Summary Continued ...**



**Setpoint Deviations for sample 7 : EXP005G**

Height Threshold [FU] : 0.1

**Overall Results for sample 7 : EXP005G**

Number of peaks found: 0                      Noise: 0.0

**Peak table for sample 7 : EXP005G**

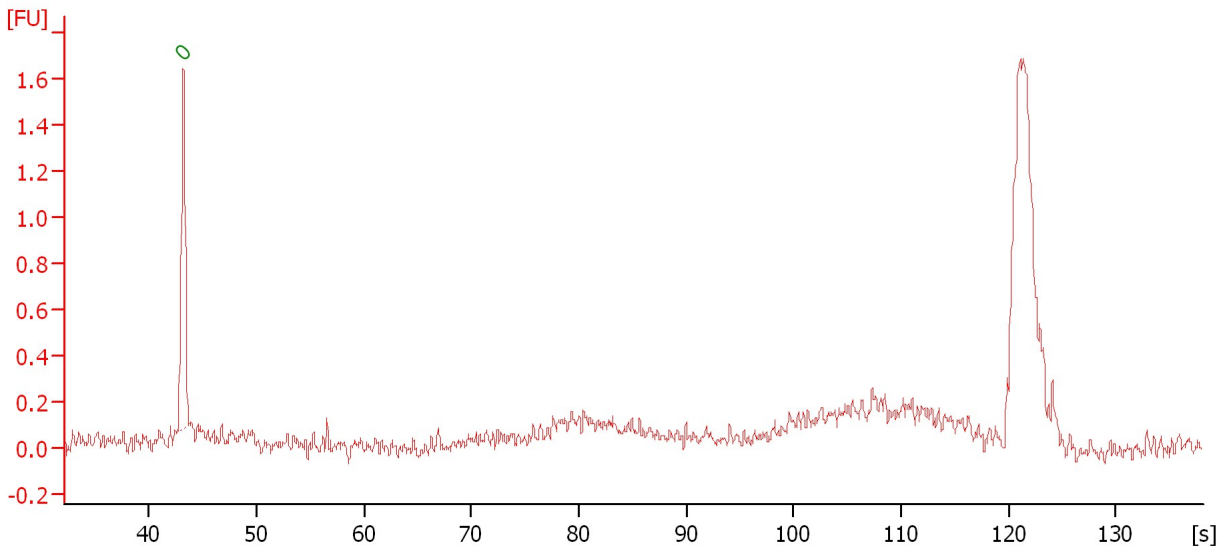
Peak	Size [bp]	Conc. [pg/μl]	Molarity [pmol/l]	Observations
1	0	0.00	0.0	Lower Marker

Assay Class: High Sensitivity DNA Assay  
Data Path: C:\...ents and Settings\Bioanalyzer\2012-04-19\2012-04-19\_001.xad

Created: 4/19/2012 10:41:40 AM  
Modified: 4/19/2012 11:31:31 AM

**Electropherogram Summary Continued ...**

EXP005H



**Setpoint Deviations for sample 8 : EXP005H**

Height Threshold [FU] : 0.1

**Overall Results for sample 8 : EXP005H**

Number of peaks found: 0                      Noise: 0.0

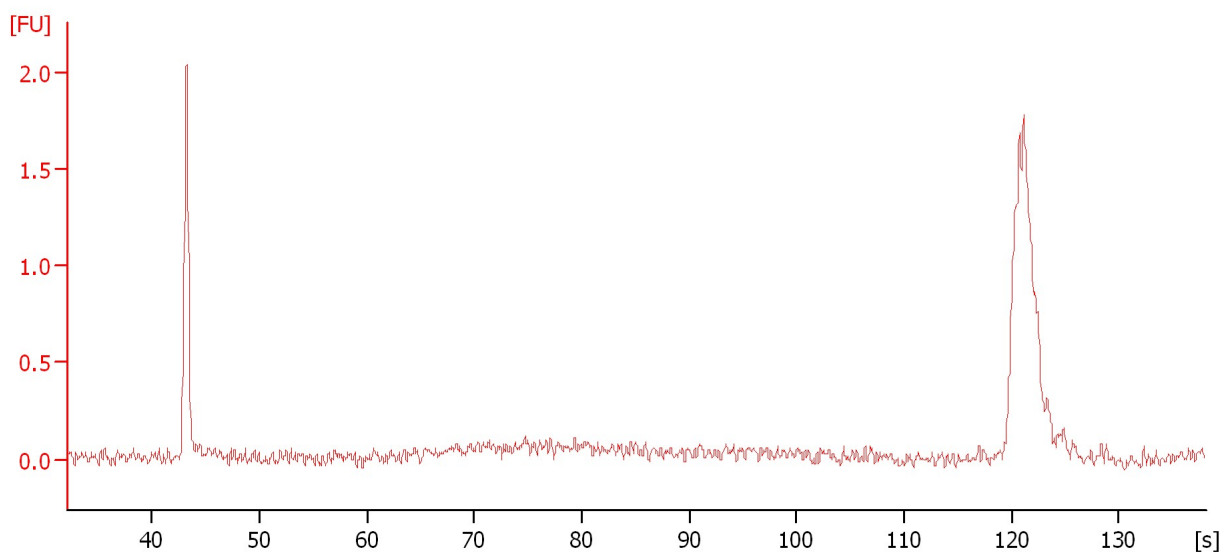
**Peak table for sample 8 : EXP005H**

Peak	Size [bp]	Conc. [pg/μl]	Molarity [pmol/l]	Observations
1	0	0.00	0.0	Lower Marker

Assay Class: High Sensitivity DNA Assay  
Data Path: C:\...ents and Settings\Bioanalyzer\2012-04-19\2012-04-19\_001.xad

Created: 4/19/2012 10:41:40 AM  
Modified: 4/19/2012 11:31:31 AM

**Electropherogram Summary Continued ...**



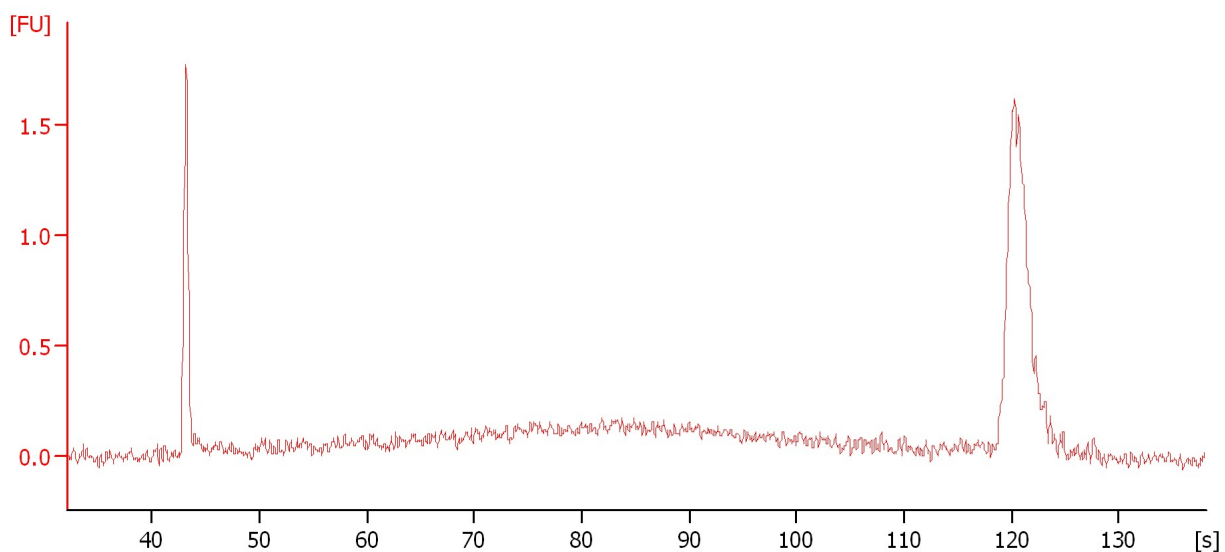
**Overall Results for sample 9 :** -

Noise: 0.0

Assay Class: High Sensitivity DNA Assay  
Data Path: C:\...ents and Settings\Bioanalyzer\2012-04-19\2012-04-19\_001.xad

Created: 4/19/2012 10:41:40 AM  
Modified: 4/19/2012 11:31:31 AM

**Electropherogram Summary Continued ...**



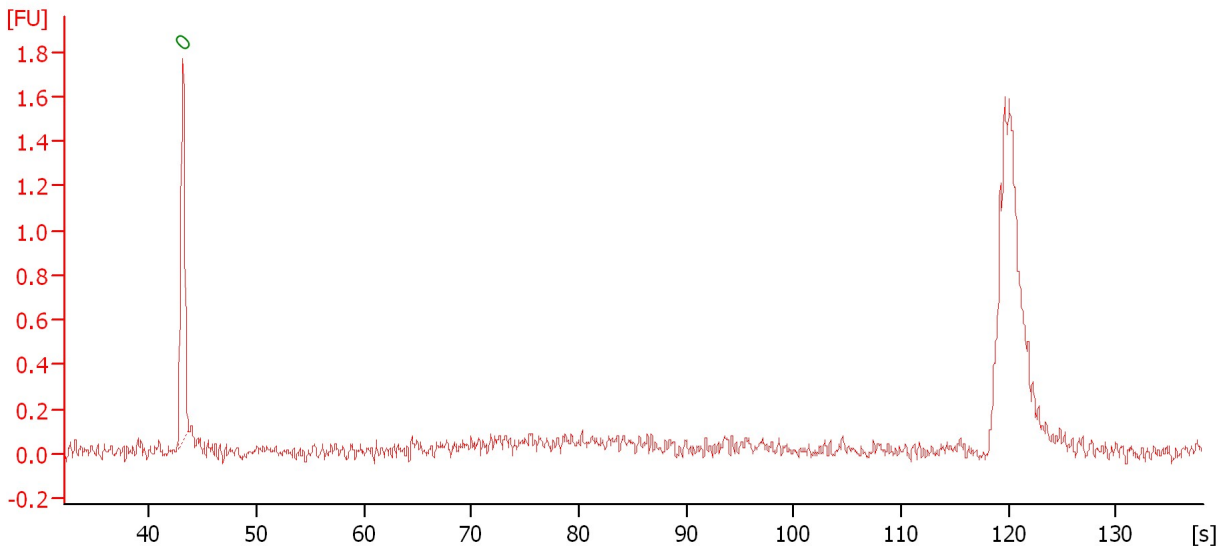
**Overall Results for sample 10 :** \_

Noise: 0.0

Assay Class: High Sensitivity DNA Assay  
Data Path: C:\...ents and Settings\Bioanalyzer\2012-04-19\2012-04-19\_001.xad

Created: 4/19/2012 10:41:40 AM  
Modified: 4/19/2012 11:31:31 AM

**Electropherogram Summary Continued ...**



**Setpoint Deviations for sample 11 :** -

Height Threshold [FU] : 0.1

**Overall Results for sample 11 :** -

Number of peaks found: 0                      Noise: 0.0

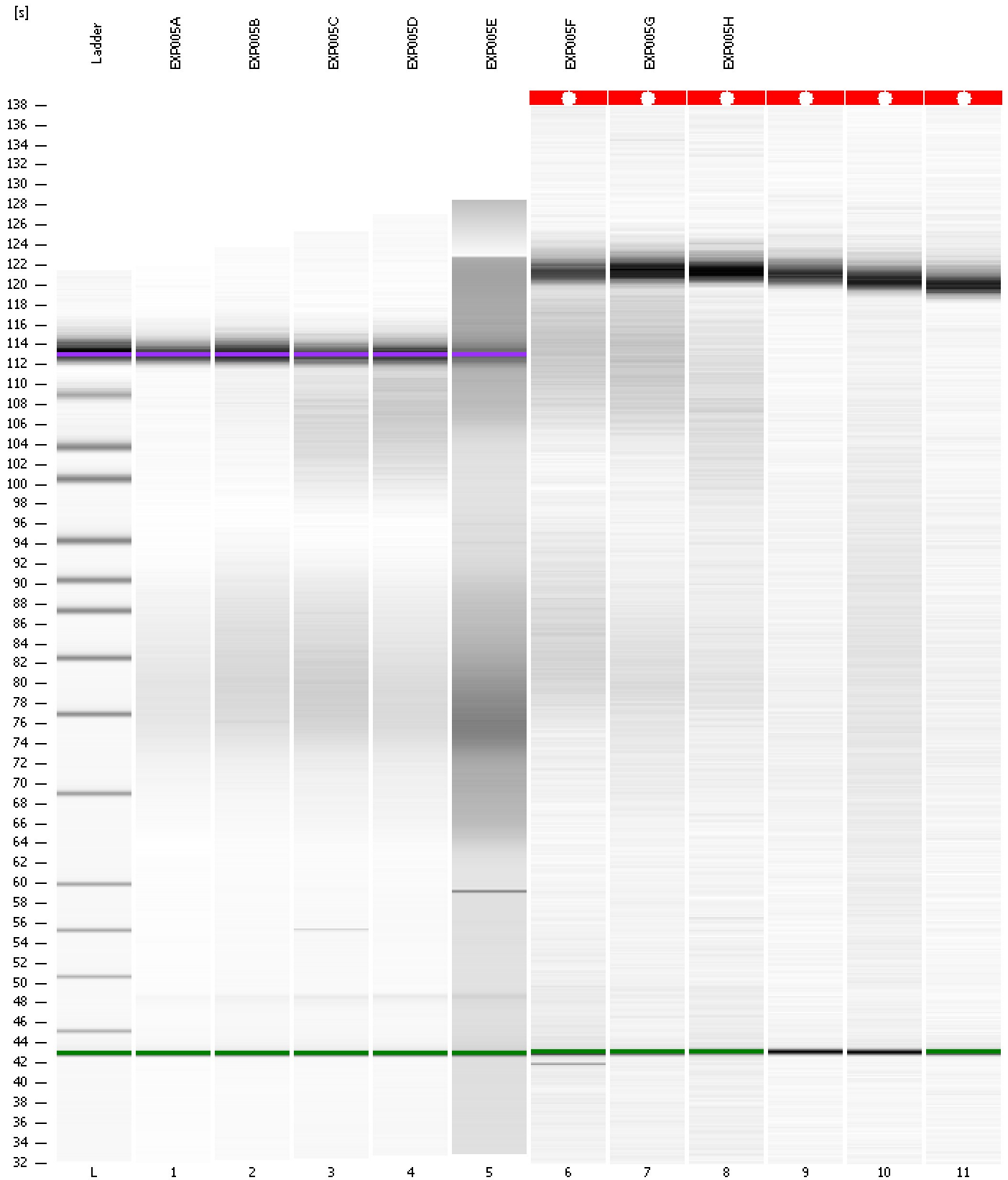
**Peak table for sample 11 :** -

Peak	Size [bp]	Conc. [pg/μl]	Molarity [pmol/l]	Observations
1	0	0.00	0.0	Lower Marker

Assay Class: High Sensitivity DNA Assay  
Data Path: C:\...ents and Settings\Bioanalyzer\2012-04-19\2012-04-19\_001.xad

Created: 4/19/2012 10:41:40 AM  
Modified: 4/19/2012 11:31:31 AM

**Gel Image**





Assay Class: High Sensitivity DNA Assay  
 Data Path: C:\...ents and Settings\Bioanalyzer\2012-04-19\2012-04-19\_001.xad

Created: 4/19/2012 10:41:40 AM  
 Modified: 4/19/2012 11:31:31 AM

**Run Logbook**

Description	Number	Source	Category	Sub Category	Time	Time Zone	User	Host
Run ended on port 1 (Number of wells acquired: 12)		Instrument	Run		4/19/2012 11:22:58 AM	(GMT --07:00) Pacific Standard Time	UC Davis	D8XSMGH1
Run started on port 1 (File: C:\Documents and Settings\Bioanalyzer\2012-04-19\2012-04-19_001.xad)		Instrument	Run		4/19/2012 10:41:45 AM	(GMT --07:00) Pacific Standard Time	UC Davis	D8XSMGH1
Product Number : G2938B		Instrument	Run		4/19/2012 10:41:45 AM	(GMT --07:00) Pacific Standard Time	UC Davis	D8XSMGH1
Name :		Instrument	Run		4/19/2012 10:41:45 AM	(GMT --07:00) Pacific Standard Time	UC Davis	D8XSMGH1
Vendor : Agilent Technologies		Instrument	Run		4/19/2012 10:41:45 AM	(GMT --07:00) Pacific Standard Time	UC Davis	D8XSMGH1
Serial# : DE13701086		Instrument	Run		4/19/2012 10:41:45 AM	(GMT --07:00) Pacific Standard Time	UC Davis	D8XSMGH1
Firmware : C.01.069		Instrument	Run		4/19/2012 10:41:45 AM	(GMT --07:00) Pacific Standard Time	UC Davis	D8XSMGH1
Cartridge : Electrode		Instrument	Run		4/19/2012 10:41:45 AM	(GMT --07:00) Pacific Standard Time	UC Davis	D8XSMGH1