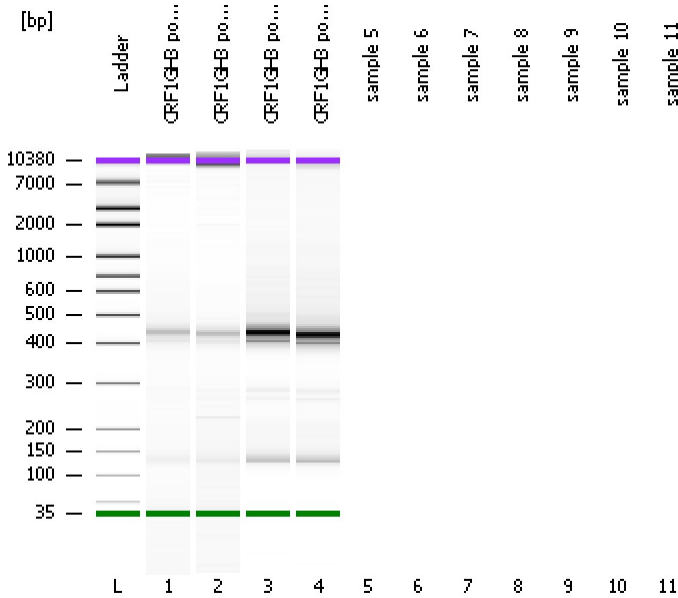


Assay Class: High Sensitivity DNA Assay
Data Path: C:\...ents and Settings\Bioanalyzer\2012-04-19\2012-04-19_002.xad

Created: 4/19/2012 12:04:58 PM
Modified: 4/19/2012 12:31:57 PM

Electrophoresis File Run Summary



Instrument Information:

Instrument Name: DE13701086 Firmware: C.01.069
Serial#: DE13701086 Type: G2938B

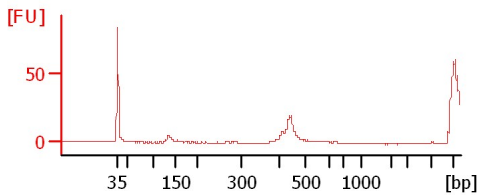
Assay Information:

Assay Origin Path: C:\Program Files\Agilent\2100 bioanalyzer\2100 expert\assays\dsDNA\High Sensitivity DNA.xsy
Assay Class: High Sensitivity DNA Assay
Version: 1.03
Assay Comments: Copyright © 2003-2010 Agilent Technologies

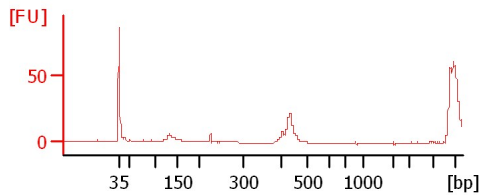
Chip Information:

Chip Lot #:
Reagent Kit Lot #:
Chip Comments:

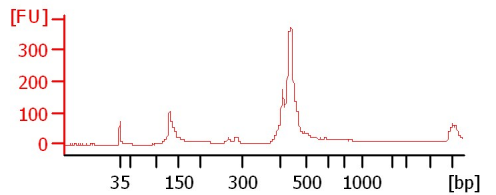
CRF1GH3 pooled 20.1



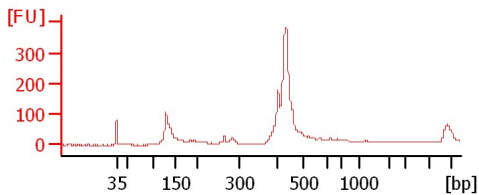
CRF1GH3 pooled 20.2



CRF1GH3 pooled 1.1



CRF1GH3 pooled 1.2



Assay Class: High Sensitivity DNA Assay
 Data Path: C:\...ents and Settings\Bioanalyzer\2012-04-19\2012-04-19_002.xad

Created: 4/19/2012 12:04:58 PM
 Modified: 4/19/2012 12:31:57 PM

Electrophoresis File Run Summary (Chip Summary)

Sample Name	Sample Comment	Rest. Digest	Status	Observation	Result Label	Result Color
CRF1GH3 pooled 20.1		<input type="checkbox"/>	✓			
CRF1GH3 pooled 20.2		<input type="checkbox"/>	✓			
CRF1GH3 pooled 1.1		<input type="checkbox"/>	✓			
CRF1GH3 pooled 1.2		<input type="checkbox"/>	✓			
sample 5		<input type="checkbox"/>				
sample 6		<input type="checkbox"/>				
sample 7		<input type="checkbox"/>				
sample 8		<input type="checkbox"/>				
sample 9		<input type="checkbox"/>				
sample 10		<input type="checkbox"/>				
sample 11		<input type="checkbox"/>				
Ladder		<input type="checkbox"/>	✓			

Chip Lot #

Reagent Kit Lot #

Chip Comments :

Assay Class: High Sensitivity DNA Assay
Data Path: C:\...ents and Settings\Bioanalyzer\2012-04-19\2012-04-19_002.xad

Created: 4/19/2012 12:04:58 PM
Modified: 4/19/2012 12:31:57 PM

Electrophoresis Assay Details

General Analysis Settings

Number of Available Sample and Ladder Wells (Max.) : 12
Minimum Visible Range [s] : 32
Maximum Visible Range [s] : 138
Start Analysis Time Range [s] : 33
End Analysis Time Range [s] : 137.5
Ladder Concentration [pg/μl] : 1950
Uses Standard Area for Ladder Fragments
Lower Marker Concentration [pg/μl] : 125
Upper Marker Concentration [pg/μl] : 75
Used Upper Marker for Quantitation
Standard Curve Fit is Point to Point
Show Data Aligned to Lower and Upper Marker

Integrator Settings

Integration Start Time [s] : 33.05
Integration End Time [s] : 137
Slope Threshold : 0.8
Height Threshold [FU] : 5
Area Threshold : 0.1
Width Threshold [s] : 0.6
Baseline Plateau [s] : 0.5

Filter Settings

Filter Width [s] : 0.5
Polynomial Order : 4

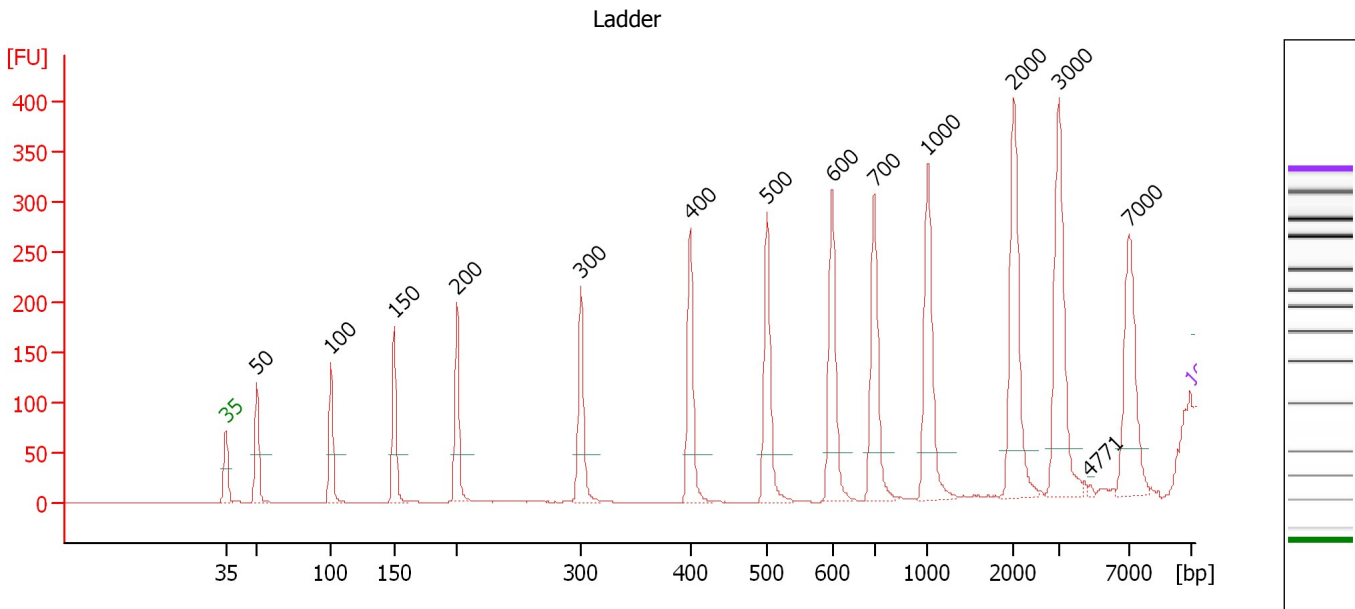
Ladder

Ladder Peak	Size	Area
1	35	160
2	50	210
3	100	208
4	150	221
5	200	242
6	300	270
7	400	305
8	500	306
9	600	336
10	700	321
11	1000	366
12	2000	413
13	3000	411
14	7000	400
15	10380	214

Assay Class: High Sensitivity DNA Assay
 Data Path: C:\...ents and Settings\Bioanalyzer\2012-04-19\2012-04-19_002.xad

Created: 4/19/2012 12:04:58 PM
 Modified: 4/19/2012 12:31:57 PM

Electropherogram Summary



Overall Results for Ladder

Noise: 0.2

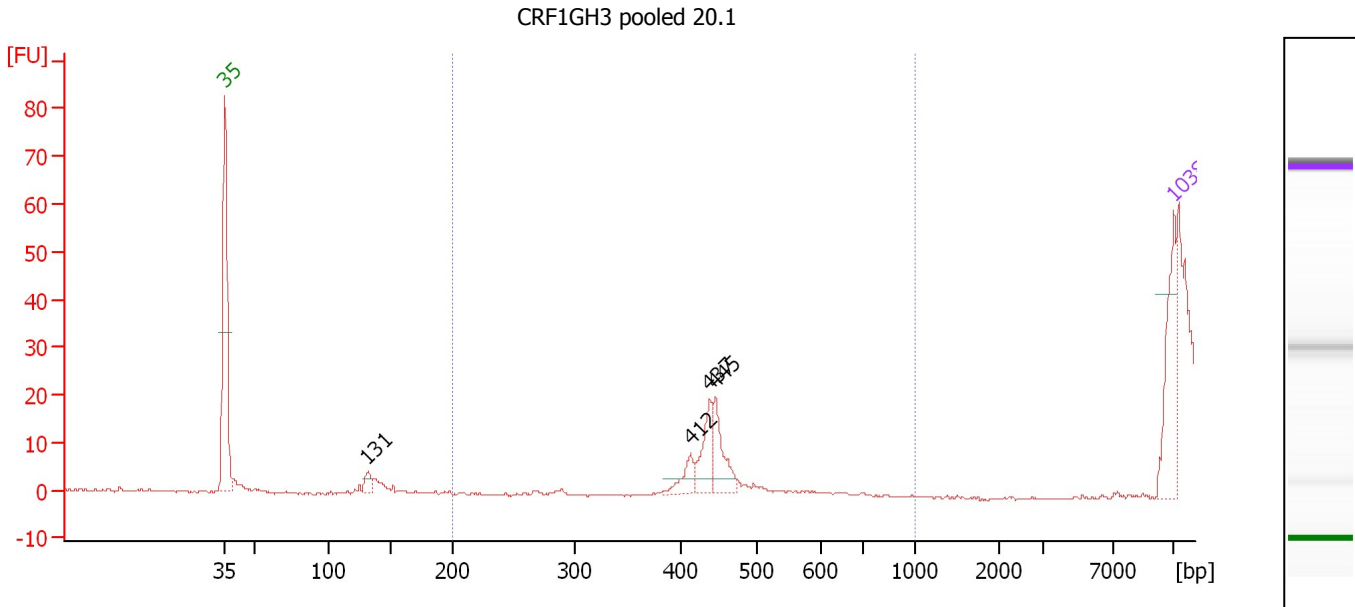
Peak table for Ladder

Peak	Size [bp]	Conc. [pg/μl]	Molarity [pmol/l]	Observations
1	35	125.00	5,411.3	Lower Marker
2	50	150.00	4,545.5	Ladder Peak
3	100	150.00	2,272.7	Ladder Peak
4	150	150.00	1,515.2	Ladder Peak
5	200	150.00	1,136.4	Ladder Peak
6	300	150.00	757.6	Ladder Peak
7	400	150.00	568.2	Ladder Peak
8	500	150.00	454.5	Ladder Peak
9	600	150.00	378.8	Ladder Peak
10	700	150.00	324.7	Ladder Peak
11	1,000	150.00	227.3	Ladder Peak
12	2,000	150.00	113.6	Ladder Peak
13	3,000	150.00	75.8	Ladder Peak
14	4,771	0.00	0.0	
15	7,000	150.00	32.5	Ladder Peak
16	10,380	75.00	10.9	Upper Marker

Assay Class: High Sensitivity DNA Assay
 Data Path: C:\...ents and Settings\Bioanalyzer\2012-04-19\2012-04-19_002.xad

Created: 4/19/2012 12:04:58 PM
 Modified: 4/19/2012 12:31:57 PM

Electropherogram Summary Continued ...



Setpoint Deviations for sample 1 : CRF1GH3 pooled 20.1

Height Threshold [FU] : 3

Overall Results for sample 1 : CRF1GH3 pooled 20.1

Number of peaks found: 4 Corr. Area 1: 0.0
 Noise: 0.2

Peak table for sample 1 : CRF1GH3 pooled 20.1

Peak	Size [bp]	Conc. [pg/μl]	Molarity [pmol/l]	Observations
1	35	125.00	5,411.3	Lower Marker
2	131	17.24	198.9	
3	412	24.71	91.0	
4	437	48.15	166.9	
5	445	51.57	175.7	
6	10,380	75.00	10.9	Upper Marker

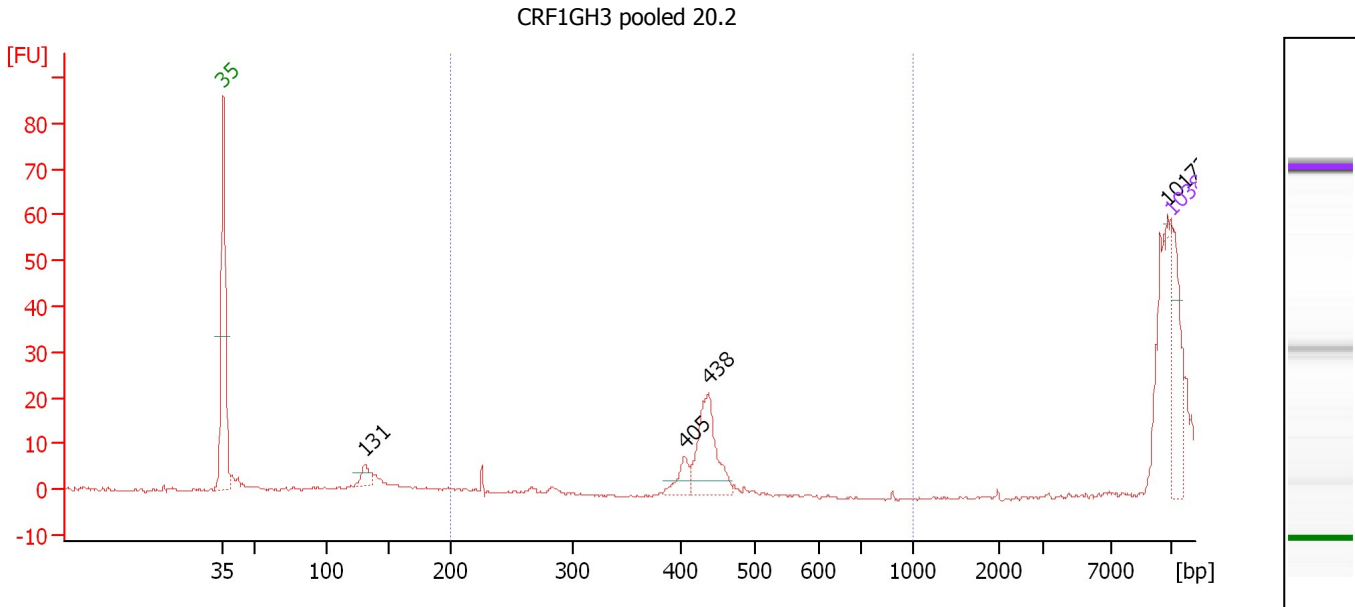
Region table for sample 1 : CRF1GH3 pooled 20.1

From [bp]	Molarity [pmol/l]	Average Size [bp]	Conc. [pg/μl]	To [bp]	Corr. Area	% of Total	Size distribution in CV [%]	Color
200	0.0	0	0.00	1,000	0.0	0	0.0	Blue

Assay Class: High Sensitivity DNA Assay
 Data Path: C:\...ents and Settings\Bioanalyzer\2012-04-19\2012-04-19_002.xad

Created: 4/19/2012 12:04:58 PM
 Modified: 4/19/2012 12:31:57 PM

Electropherogram Summary Continued ...



Setpoint Deviations for sample 2 : CRF1GH3 pooled 20.2

Height Threshold [FU] : 3

Overall Results for sample 2 : CRF1GH3 pooled 20.2

Number of peaks found: 4 Corr. Area 1: 8.9
 Noise: 0.2

Peak table for sample 2 : CRF1GH3 pooled 20.2

Peak	Size [bp]	Conc. [pg/μl]	Molarity [pmol/l]	Observations
1	35	125.00	5,411.3	Lower Marker
2	131	29.82	345.2	
3	405	32.66	122.1	
4	438	134.22	464.6	
5	10,173	2.10	0.3	
6	10,380	75.00	10.9	Upper Marker

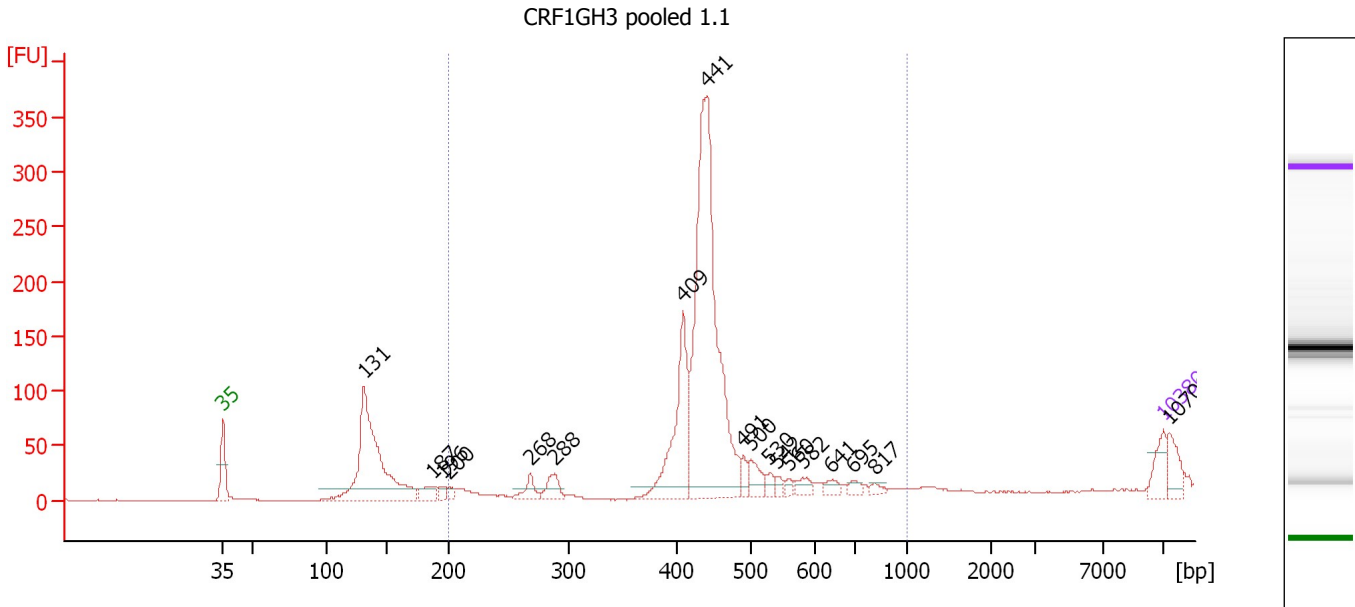
Region table for sample 2 : CRF1GH3 pooled 20.2

From [bp]	Molarity [pmol/l]	Average Size [bp]	Conc. [pg/μl]	To [bp]	Corr. Area	% of Total	Size distribution in CV [%]	Color
200	86.2	435	24.75	1,000	8.9	20	1.0	Blue

Assay Class: High Sensitivity DNA Assay
 Data Path: C:\...ents and Settings\Bioanalyzer\2012-04-19\2012-04-19_002.xad

Created: 4/19/2012 12:04:58 PM
 Modified: 4/19/2012 12:31:57 PM

Electropherogram Summary Continued ...



Setpoint Deviations for sample 3 : CRF1GH3 pooled 1.1

Height Threshold [FU] : 10

Overall Results for sample 3 : CRF1GH3 pooled 1.1

Number of peaks found: 18 Corr. Area 1: 1,194.9
 Noise: 0.3


Peak table for sample 3 : CRF1GH3 pooled 1.1

Peak	Size [bp]	Conc. [pg/μl]	Molarity [pmol/l]	Observations
1	35	125.00	5,411.3	Lower Marker
2	131	1,016.84	11,756.8	
3	187	75.40	610.0	
4	196	28.76	222.8	
5	200	28.72	217.6	
6	268	70.45	398.5	
7	288	85.33	448.8	
8	409	505.09	1,869.4	
9	441	1,714.52	5,884.8	
10	491	44.68	138.0	
11	500	89.42	271.0	
12	530	33.36	95.4	
13	542	22.84	63.9	
14	560	22.04	59.6	
15	582	43.48	113.1	
16	641	35.96	85.0	
17	695	29.29	63.9	
18	817	20.20	37.5	
19	10,380	75.00	10.9	Upper Marker
20	10,709	0.00	0.0	

Assay Class: High Sensitivity DNA Assay
Data Path: C:\...ents and Settings\Bioanalyzer\2012-04-19\2012-04-19_002.xad

Created: 4/19/2012 12:04:58 PM
Modified: 4/19/2012 12:31:57 PM

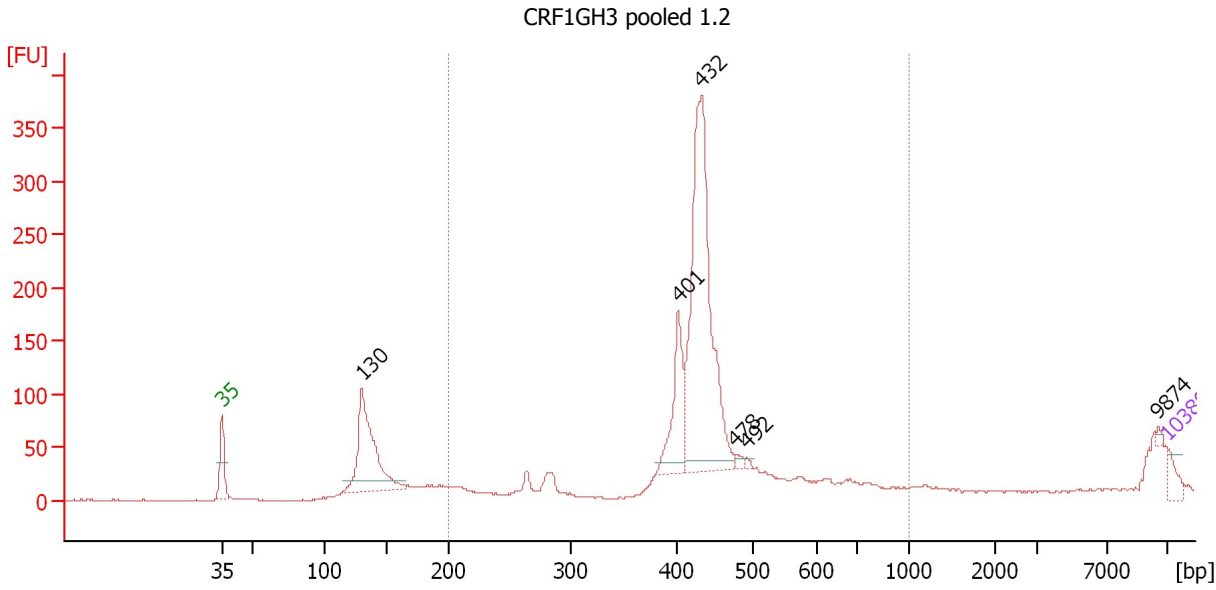
Electropherogram Summary Continued ...**... Region table for sample 3 : CRF1GH3 pooled 1.1**

From [bp]	Molarity [pmol/l]	Average Size [bp]	Conc. [pg/μl]	To [bp]	Corr. Area	% of Total	Size distribution in CV [%]	Co lor
200	8,039.0	438	2,281.19	1,000	1,194.9	77	10.5	

Assay Class: High Sensitivity DNA Assay
 Data Path: C:\...ents and Settings\Bioanalyzer\2012-04-19\2012-04-19_002.xad

Created: 4/19/2012 12:04:58 PM
 Modified: 4/19/2012 12:31:57 PM

Electropherogram Summary Continued ...



Setpoint Deviations for sample 4 : CRF1GH3 pooled 1.2

Height Threshold [FU] : 10

Overall Results for sample 4 : CRF1GH3 pooled 1.2

Number of peaks found: 6 Corr. Area 1: 1,411.6
 Noise: 0.7

Peak table for sample 4 : CRF1GH3 pooled 1.2

Peak	Size [bp]	Conc. [pg/μl]	Molarity [pmol/l]	Observations
1	35	125.00	5,411.3	Lower Marker
2	130	1,109.99	12,975.9	
3	401	532.98	2,012.4	
4	432	2,325.06	8,145.6	
5	478	34.28	108.7	
6	492	19.19	59.1	
7	9,874	13.71	2.1	
8	10,380	75.00	10.9	Upper Marker

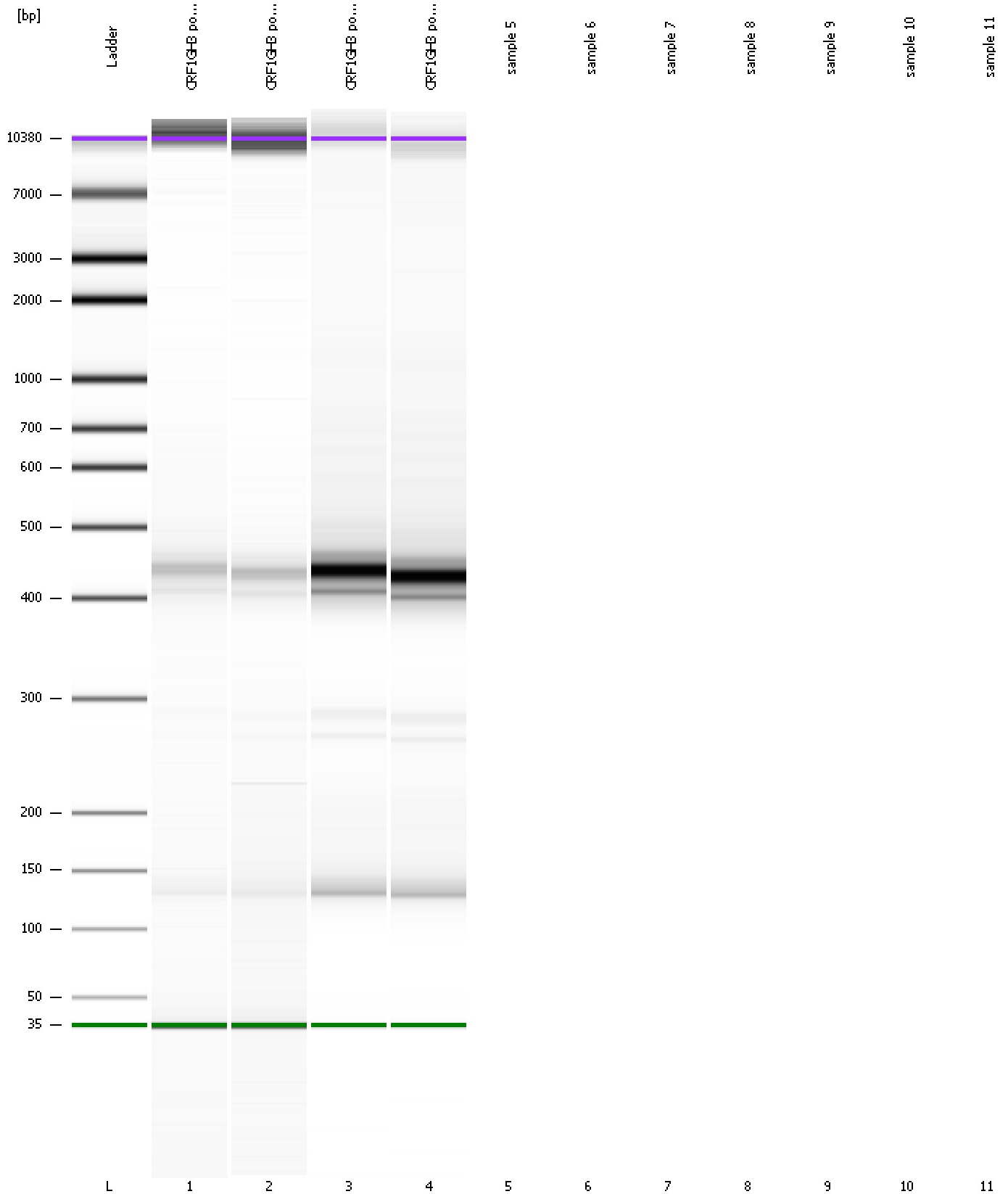
Region table for sample 4 : CRF1GH3 pooled 1.2

From [bp]	Molarity [pmol/l]	Average Size [bp]	Conc. [pg/μl]	To [bp]	Corr. Area	% of Total	Size distribution in CV [%]	Color
200	14,796.9	438	4,095.43	1,000	1,411.6	76	16.8	Blue

Assay Class: High Sensitivity DNA Assay
Data Path: C:\...ents and Settings\Bioanalyzer\2012-04-19\2012-04-19_002.xad

Created: 4/19/2012 12:04:58 PM
Modified: 4/19/2012 12:31:57 PM

Gel Image



Assay Class: High Sensitivity DNA Assay
Data Path: C:\...ents and Settings\Bioanalyzer\2012-04-19\2012-04-19_002.xad

Created: 4/19/2012 12:04:58 PM
Modified: 4/19/2012 12:31:57 PM

Invalid Samples

Sample 5 has not been run, no results available.

Sample 6 has not been run, no results available.

Sample 7 has not been run, no results available.

Sample 8 has not been run, no results available.

Sample 9 has not been run, no results available.

Sample 10 has not been run, no results available.

Sample 11 has not been run, no results available.

Assay Class: High Sensitivity DNA Assay
 Data Path: C:\...ents and Settings\Bioanalyzer\2012-04-19\2012-04-19_002.xad

Created: 4/19/2012 12:04:58 PM
 Modified: 4/19/2012 12:31:57 PM

Run Logbook

Description	Number	Source	Category	Sub Category	Time	Time Zone	User	Host
Run ended on port 1 (Number of wells acquired: 5)		Instrument	Run		4/19/2012 12:26:15 PM	(GMT --07:00) Pacific Standard Time	UC Davis	D8XSMGH1
Run started on port 1 (File: C:\Documents and Settings\Bioanalyzer\2012-04-19\2012-04-19_002.xad)		Instrument	Run		4/19/2012 12:05:03 PM	(GMT --07:00) Pacific Standard Time	UC Davis	D8XSMGH1
Product Number : G2938B		Instrument	Run		4/19/2012 12:05:03 PM	(GMT --07:00) Pacific Standard Time	UC Davis	D8XSMGH1
Name :		Instrument	Run		4/19/2012 12:05:03 PM	(GMT --07:00) Pacific Standard Time	UC Davis	D8XSMGH1
Vendor : Agilent Technologies		Instrument	Run		4/19/2012 12:05:03 PM	(GMT --07:00) Pacific Standard Time	UC Davis	D8XSMGH1
Serial# : DE13701086		Instrument	Run		4/19/2012 12:05:03 PM	(GMT --07:00) Pacific Standard Time	UC Davis	D8XSMGH1
Firmware : C.01.069		Instrument	Run		4/19/2012 12:05:03 PM	(GMT --07:00) Pacific Standard Time	UC Davis	D8XSMGH1
Cartridge : Electrode		Instrument	Run		4/19/2012 12:05:03 PM	(GMT --07:00) Pacific Standard Time	UC Davis	D8XSMGH1