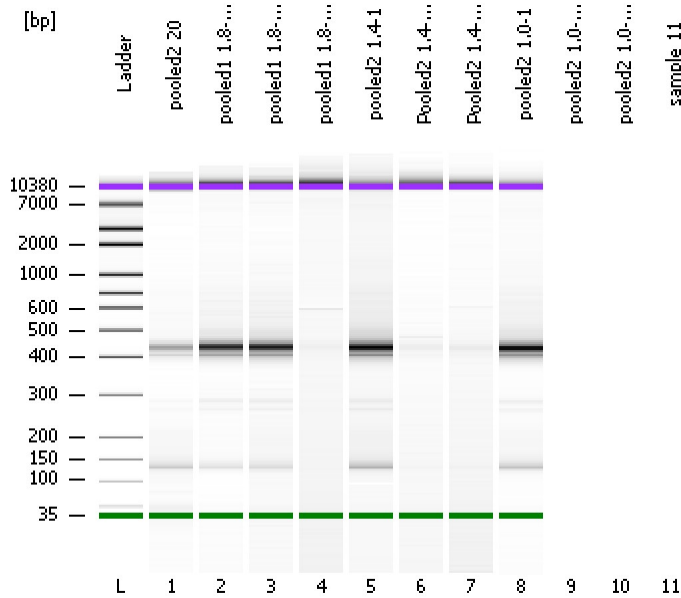


Assay Class: High Sensitivity DNA Assay  
Data Path: C:\...ents and Settings\Bioanalyzer\2012-04-20\2012-04-20\_005.xad

Created: 4/20/2012 2:56:40 PM  
Modified: 4/20/2012 3:29:36 PM

### Electrophoresis File Run Summary



#### Instrument Information:

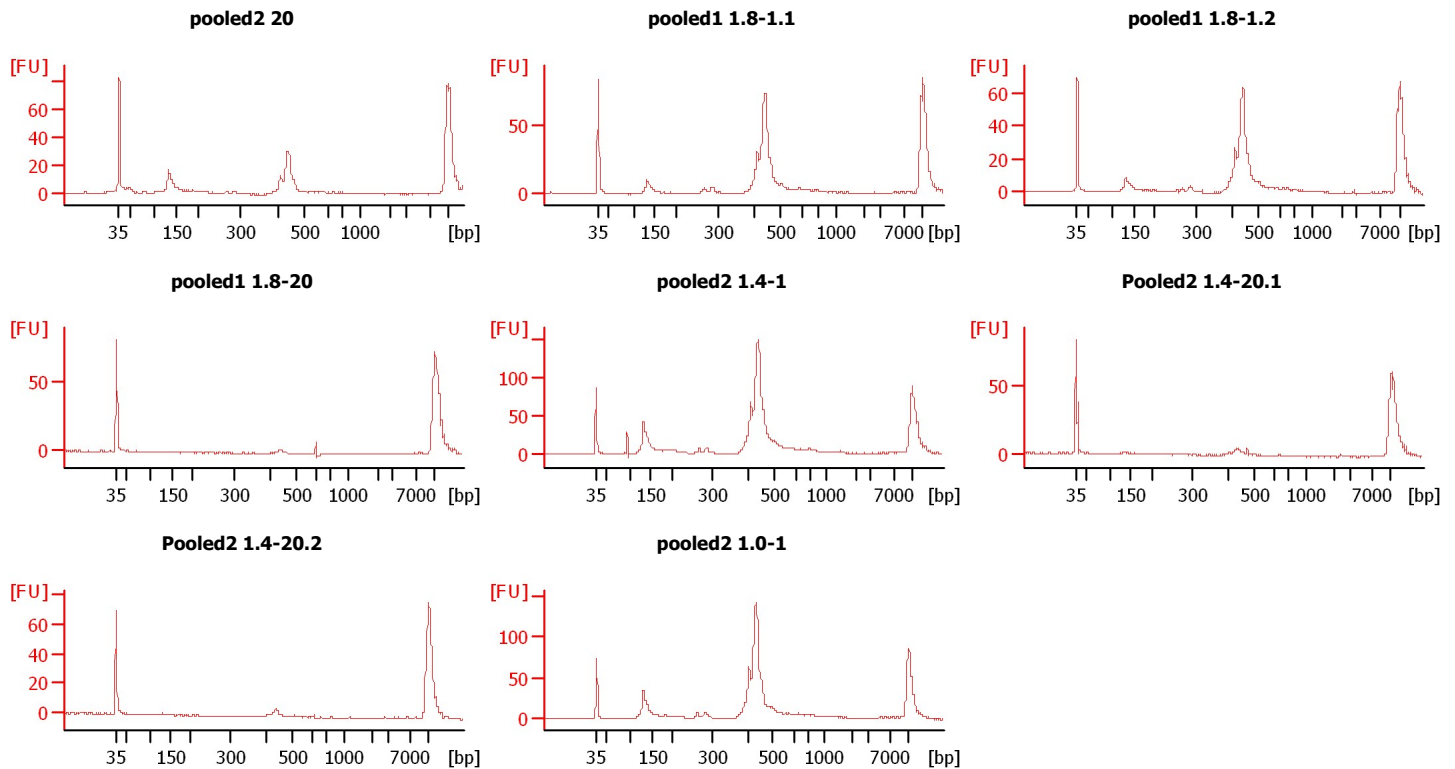
Instrument Name: DE13701086      Firmware: C.01.069  
Serial#: DE13701086      Type: G2938B

#### Assay Information:

Assay Origin Path: C:\Program Files\Agilent\2100 bioanalyzer\2100 expert\assays\dsDNA\High Sensitivity DNA.xsy  
Assay Class: High Sensitivity DNA Assay  
Version: 1.03  
Assay Comments: Copyright © 2003-2010 Agilent Technologies

#### Chip Information:

Chip Lot #:   
Reagent Kit Lot #:   
Chip Comments:



Assay Class: High Sensitivity DNA Assay  
 Data Path: C:\...ents and Settings\Bioanalyzer\2012-04-20\2012-04-20\_005.xad

Created: 4/20/2012 2:56:40 PM  
 Modified: 4/20/2012 3:29:36 PM

**Electrophoresis File Run Summary (Chip Summary)**

Sample Name	Sample Comment	Rest. Digest	Status	Observation	Result Label	Result Color
pooled2 20		<input type="checkbox"/>	✓			
pooled1 1.8-1.1		<input type="checkbox"/>	✓			
pooled1 1.8-1.2		<input type="checkbox"/>	✓			
pooled1 1.8-20		<input type="checkbox"/>	✓			
pooled2 1.4-1		<input type="checkbox"/>	✓			
Pooled2 1.4-20.1		<input type="checkbox"/>	✓			
Pooled2 1.4-20.2		<input type="checkbox"/>	✓			
pooled2 1.0-1		<input type="checkbox"/>	✓			
pooled2 1.0-20.1		<input type="checkbox"/>	✗			
pooled2 1.0-20.2		<input type="checkbox"/>	✗			
sample 11		<input type="checkbox"/>				
Ladder		<input type="checkbox"/>	✓			

**Chip Lot #**

**Reagent Kit Lot #**

**Chip Comments :**

Assay Class: High Sensitivity DNA Assay  
Data Path: C:\...ents and Settings\Bioanalyzer\2012-04-20\2012-04-20\_005.xad

Created: 4/20/2012 2:56:40 PM  
Modified: 4/20/2012 3:29:36 PM

**Electrophoresis Assay Details**

**General Analysis Settings**

Number of Available Sample and Ladder Wells (Max.) : 12  
Minimum Visible Range [s] : 32  
Maximum Visible Range [s] : 138  
Start Analysis Time Range [s] : 33  
End Analysis Time Range [s] : 137.5  
Ladder Concentration [pg/ $\mu$ l] : 1950  
Uses Standard Area for Ladder Fragments  
Lower Marker Concentration [pg/ $\mu$ l] : 125  
Upper Marker Concentration [pg/ $\mu$ l] : 75  
Used Upper Marker for Quantitation  
Standard Curve Fit is Point to Point  
Show Data Aligned to Lower and Upper Marker

**Integrator Settings**

Integration Start Time [s] : 33.05  
Integration End Time [s] : 137  
Slope Threshold : 0.8  
Height Threshold [FU] : 5  
Area Threshold : 0.1  
Width Threshold [s] : 0.6  
Baseline Plateau [s] : 0.5

**Filter Settings**

Filter Width [s] : 0.5  
Polynomial Order : 4

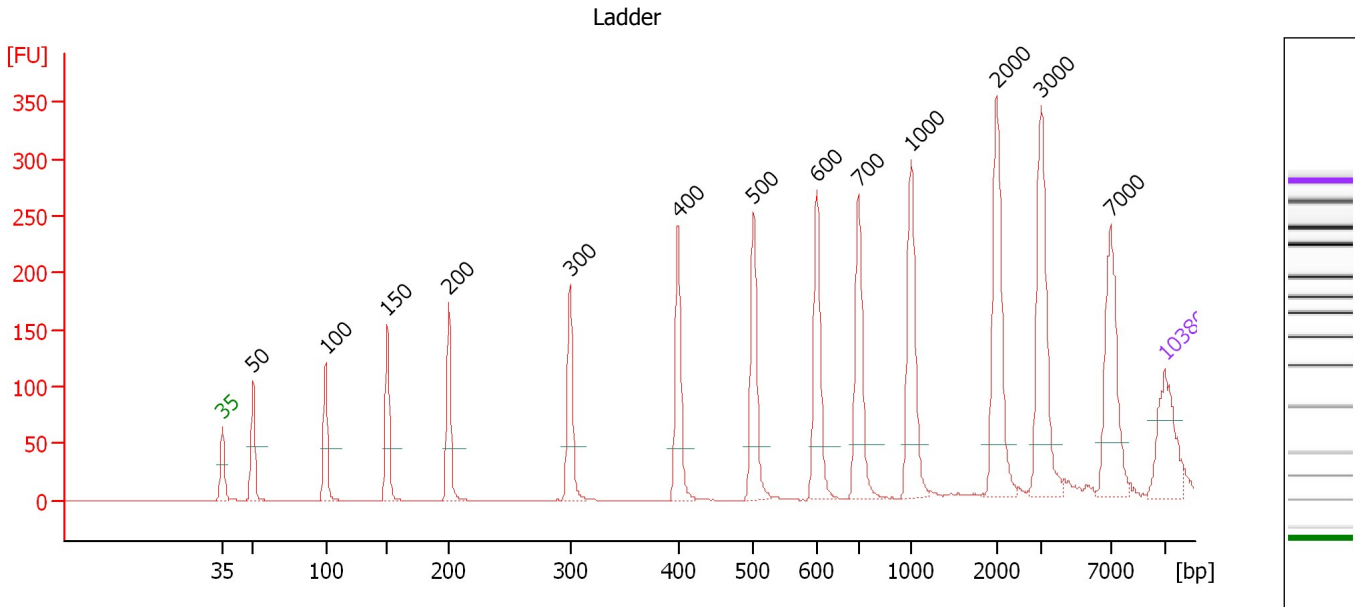
**Ladder**

Ladder Peak	Size	Area
1	35	160
2	50	210
3	100	208
4	150	221
5	200	242
6	300	270
7	400	305
8	500	306
9	600	336
10	700	321
11	1000	366
12	2000	413
13	3000	411
14	7000	400
15	10380	214

Assay Class: High Sensitivity DNA Assay  
 Data Path: C:\...ents and Settings\Bioanalyzer\2012-04-20\2012-04-20\_005.xad

Created: 4/20/2012 2:56:40 PM  
 Modified: 4/20/2012 3:29:36 PM

**Electropherogram Summary**



**Overall Results for Ladder**

Noise: 0.2

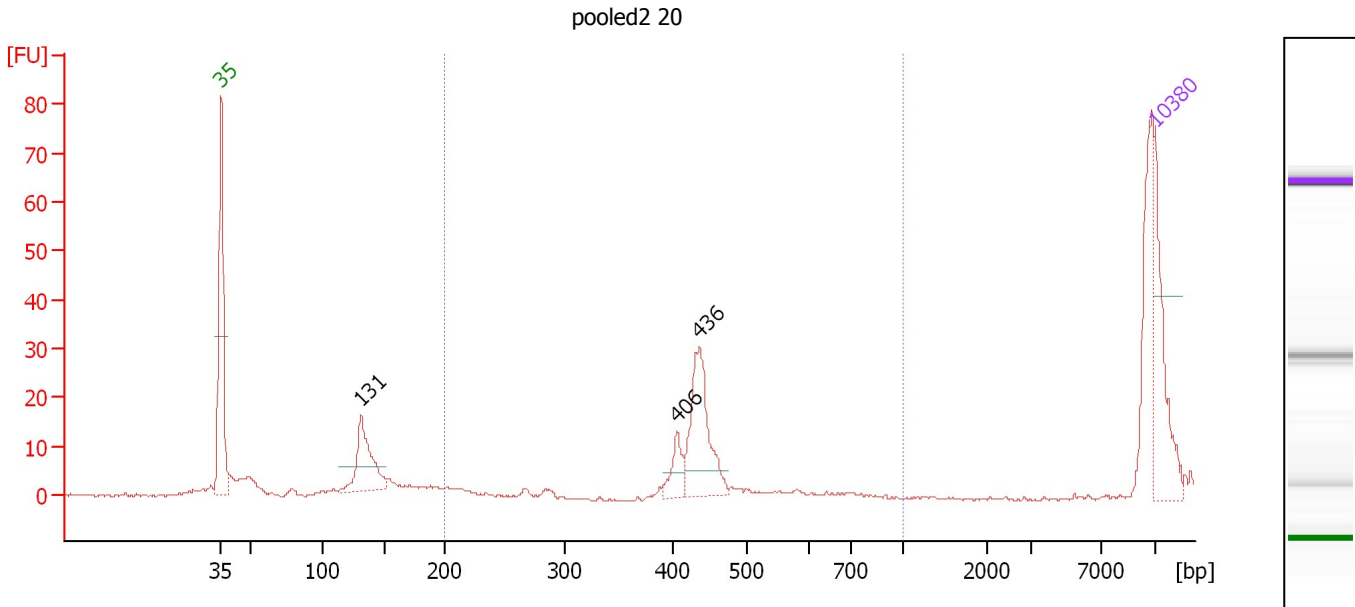
**Peak table for Ladder**

Peak	Size [bp]	Conc. [pg/μl]	Molarity [pmol/l]	Observations
1	35	125.00	5,411.3	Lower Marker
2	50	150.00	4,545.5	Ladder Peak
3	100	150.00	2,272.7	Ladder Peak
4	150	150.00	1,515.2	Ladder Peak
5	200	150.00	1,136.4	Ladder Peak
6	300	150.00	757.6	Ladder Peak
7	400	150.00	568.2	Ladder Peak
8	500	150.00	454.5	Ladder Peak
9	600	150.00	378.8	Ladder Peak
10	700	150.00	324.7	Ladder Peak
11	1,000	150.00	227.3	Ladder Peak
12	2,000	150.00	113.6	Ladder Peak
13	3,000	150.00	75.8	Ladder Peak
14	7,000	150.00	32.5	Ladder Peak
15	10,380	75.00	10.9	Upper Marker

Assay Class: High Sensitivity DNA Assay  
 Data Path: C:\...ents and Settings\Bioanalyzer\2012-04-20\2012-04-20\_005.xad

Created: 4/20/2012 2:56:40 PM  
 Modified: 4/20/2012 3:29:36 PM

**Electropherogram Summary Continued ...**



**Overall Results for sample 1 : pooled2 20**

Number of peaks found: 3                      Corr. Area 1: 73.2  
 Noise: 0.2

**Peak table for sample 1 : pooled2 20**

Peak	Size [bp]	Conc. [pg/μl]	Molarity [pmol/l]	Observations
1	35	125.00	5,411.3	Lower Marker
2	131	101.89	1,180.5	
3	406	30.14	112.4	
4	436	116.52	404.9	
5	10,380	75.00	10.9	Upper Marker

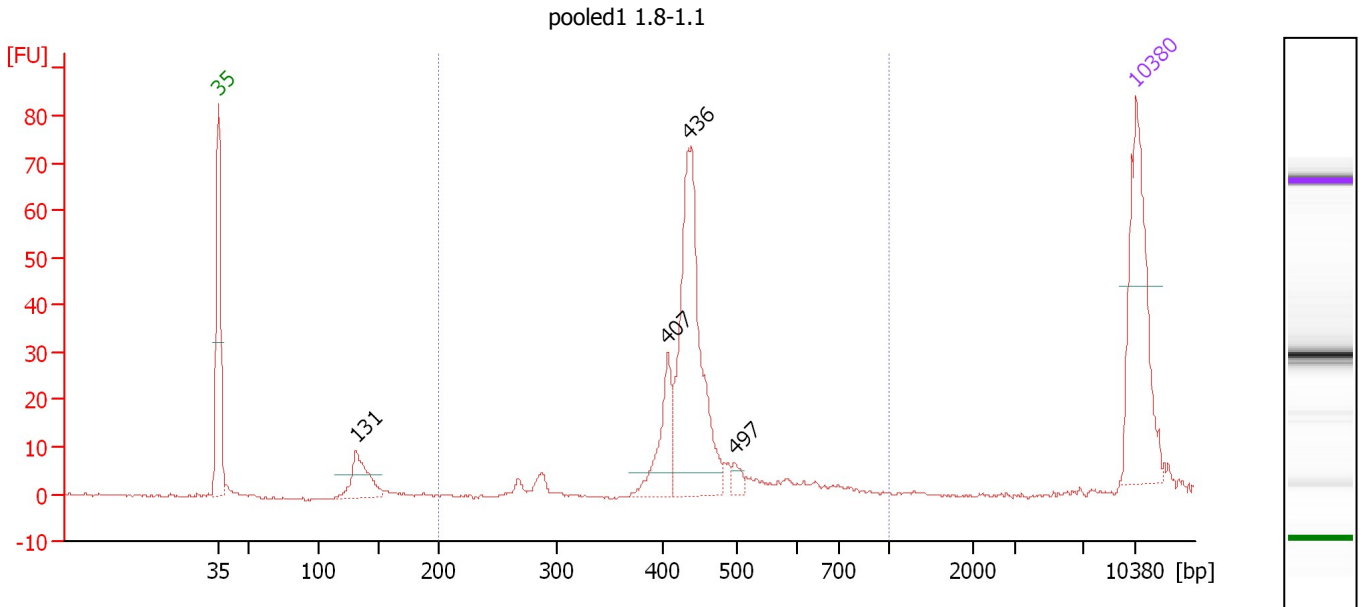
**Region table for sample 1 : pooled2 20**

From [bp]	Molarity [pmol/l]	Average Size [bp]	Conc. [pg/μl]	To [bp]	Corr. Area	% of Total	Size distribution in CV [%]	Color
200	477.0	428	132.26	1,000	73.2	37	7.7	Blue

Assay Class: High Sensitivity DNA Assay  
 Data Path: C:\...ents and Settings\Bioanalyzer\2012-04-20\2012-04-20\_005.xad

Created: 4/20/2012 2:56:40 PM  
 Modified: 4/20/2012 3:29:36 PM

**Electropherogram Summary Continued ...**



**Overall Results for sample 2 : pooled1 1.8-1.1**

Number of peaks found: 4                      Corr. Area 1: 264.8  
 Noise: 0.2

**Peak table for sample 2 : pooled1 1.8-1.1**

Peak	Size [bp]	Conc. [pg/μl]	Molarity [pmol/l]	Observations
1	35	125.00	5,411.3	Lower Marker
2	131	38.33	443.5	
3	407	43.32	161.3	
4	436	165.87	576.5	
5	497	6.96	21.2	
6	10,380	75.00	10.9	Upper Marker

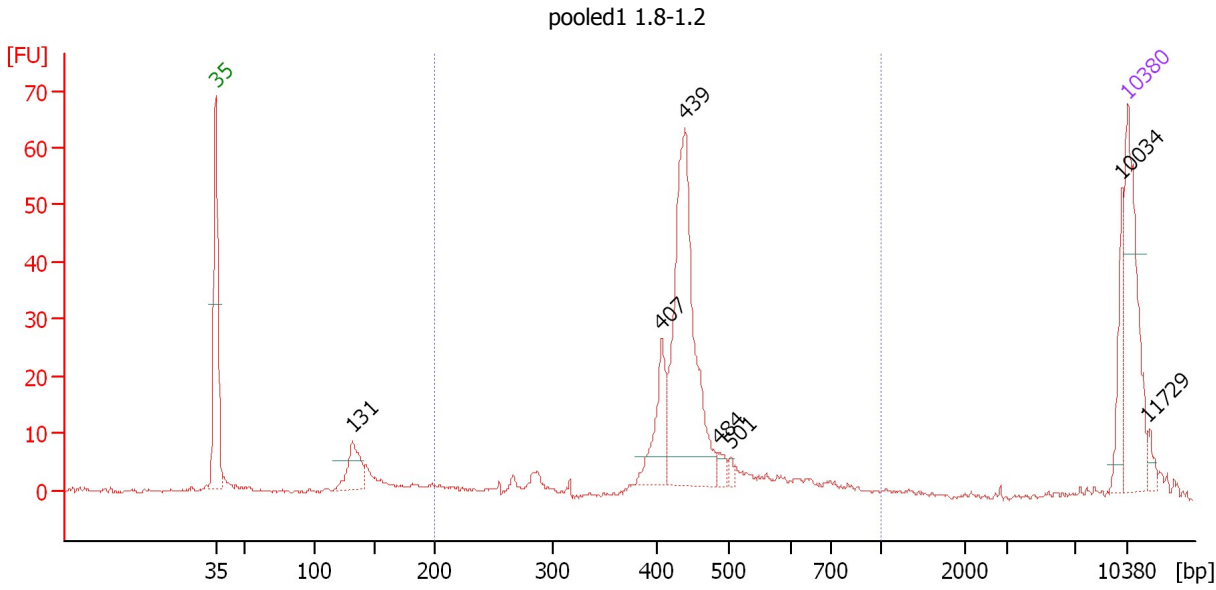
**Region table for sample 2 : pooled1 1.8-1.1**

From [bp]	Molarity [pmol/l]	Average Size [bp]	Conc. [pg/μl]	To [bp]	Corr. Area	% of Total	Size distribution in CV [%]	Color
200	860.9	449	247.25	1,000	264.8	88	15.6	Blue

Assay Class: High Sensitivity DNA Assay  
 Data Path: C:\...ents and Settings\Bioanalyzer\2012-04-20\2012-04-20\_005.xad

Created: 4/20/2012 2:56:40 PM  
 Modified: 4/20/2012 3:29:36 PM

**Electropherogram Summary Continued ...**



**Overall Results for sample 3 : pooled1 1.8-1.2**

Number of peaks found: 7                      Corr. Area 1: 252.1  
 Noise: 0.3

**Peak table for sample 3 : pooled1 1.8-1.2**

Peak	Size [bp]	Conc. [pg/μl]	Molarity [pmol/l]	Observations
1	35	125.00	5,411.3	Lower Marker
2	131	41.54	481.0	
3	407	52.60	195.8	
4	439	229.77	793.0	
5	484	8.62	27.0	
6	501	4.74	14.3	
7	10,034	26.05	3.9	
8	10,380	75.00	10.9	Upper Marker
9	11,729	0.00	0.0	

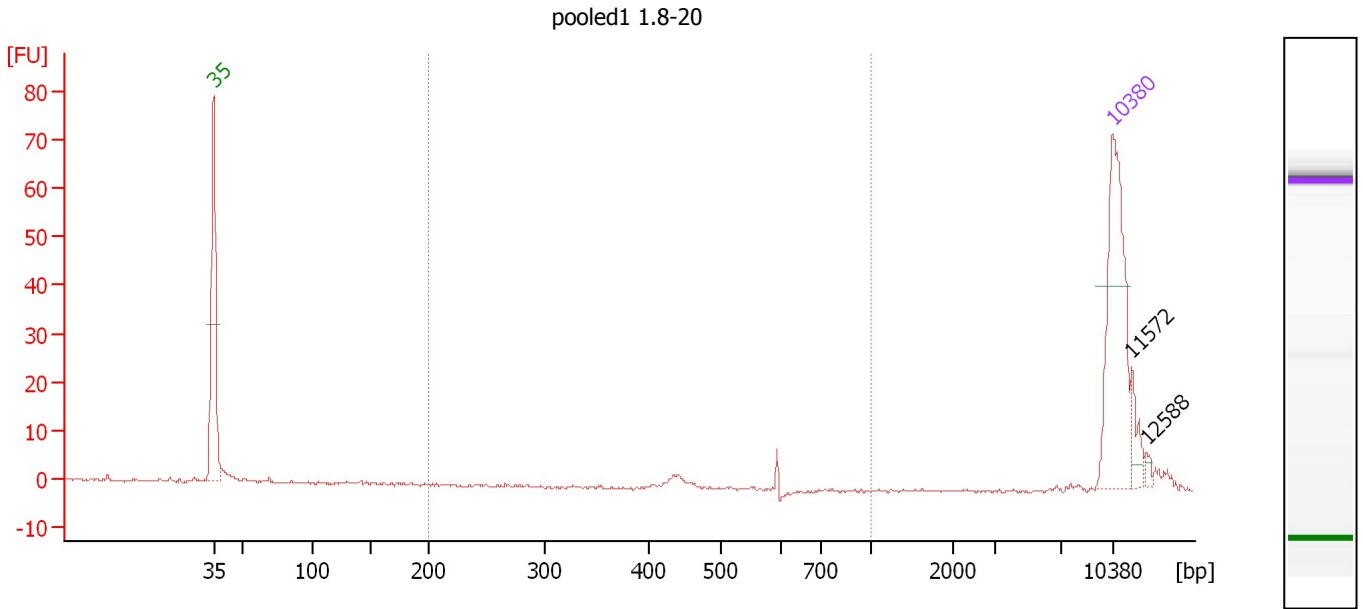
**Region table for sample 3 : pooled1 1.8-1.2**

From [bp]	Molarity [pmol/l]	Average Size [bp]	Conc. [pg/μl]	To [bp]	Corr. Area	% of Total	Size distribution in CV [%]	Color
200	1,374.4	449	387.35	1,000	252.1	75	18.9	Blue

Assay Class: High Sensitivity DNA Assay  
 Data Path: C:\...ents and Settings\Bioanalyzer\2012-04-20\2012-04-20\_005.xad

Created: 4/20/2012 2:56:40 PM  
 Modified: 4/20/2012 3:29:36 PM

**Electropherogram Summary Continued ...**



**Overall Results for sample 4 : pooled1 1.8-20**

Number of peaks found: 2                      Corr. Area 1: 4.0  
 Noise: 0.3

**Peak table for sample 4 : pooled1 1.8-20**

Peak	Size [bp]	Conc. [pg/μl]	Molarity [pmol/l]	Observations
1	35	125.00	5,411.3	Lower Marker
2	10,380	75.00	10.9	Upper Marker
3	11,572	0.00	0.0	
4	12,588	0.00	0.0	

**Region table for sample 4 : pooled1 1.8-20**

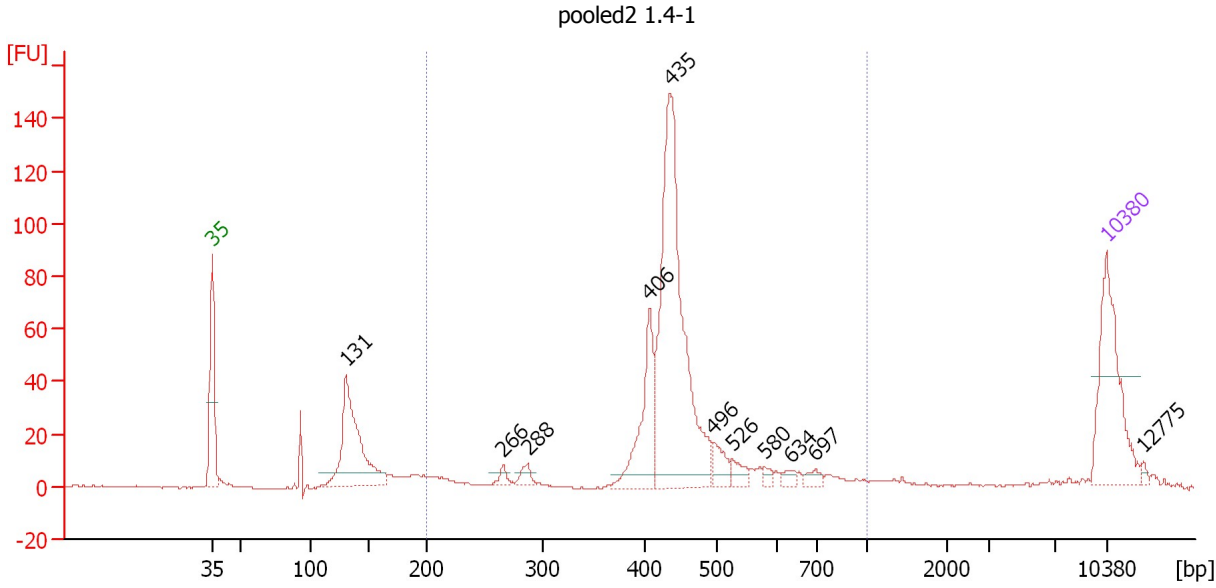
From [bp]	Molarity [pmol/l]	Average Size [bp]	Conc. [pg/μl]	To [bp]	Corr. Area	% of Total	Size distribution in CV [%]	Color
200	12.4	498	3.95	1,000	4.0	12	15.2	Blue



Assay Class: High Sensitivity DNA Assay  
 Data Path: C:\...ents and Settings\Bioanalyzer\2012-04-20\2012-04-20\_005.xad

Created: 4/20/2012 2:56:40 PM  
 Modified: 4/20/2012 3:29:36 PM

**Electropherogram Summary Continued ...**



**Overall Results for sample 5 : pooled2 1.4-1**

Number of peaks found: 11      Corr. Area 1: 636.1  
 Noise: 0.3

**Peak table for sample 5 : pooled2 1.4-1**

Peak	Size [bp]	Conc. [pg/μl]	Molarity [pmol/l]	Observations
1	35	125.00	5,411.3	Lower Marker
2	131	144.97	1,675.1	
3	266	6.85	39.0	
4	288	10.14	53.4	
5	406	76.70	286.0	
6	435	301.08	1,048.1	
7	496	19.08	58.3	
8	526	11.90	34.3	
9	580	5.24	13.7	
10	634	6.52	15.6	
11	697	7.22	15.7	
12	10,380	75.00	10.9	Upper Marker
13	12,775	0.00	0.0	

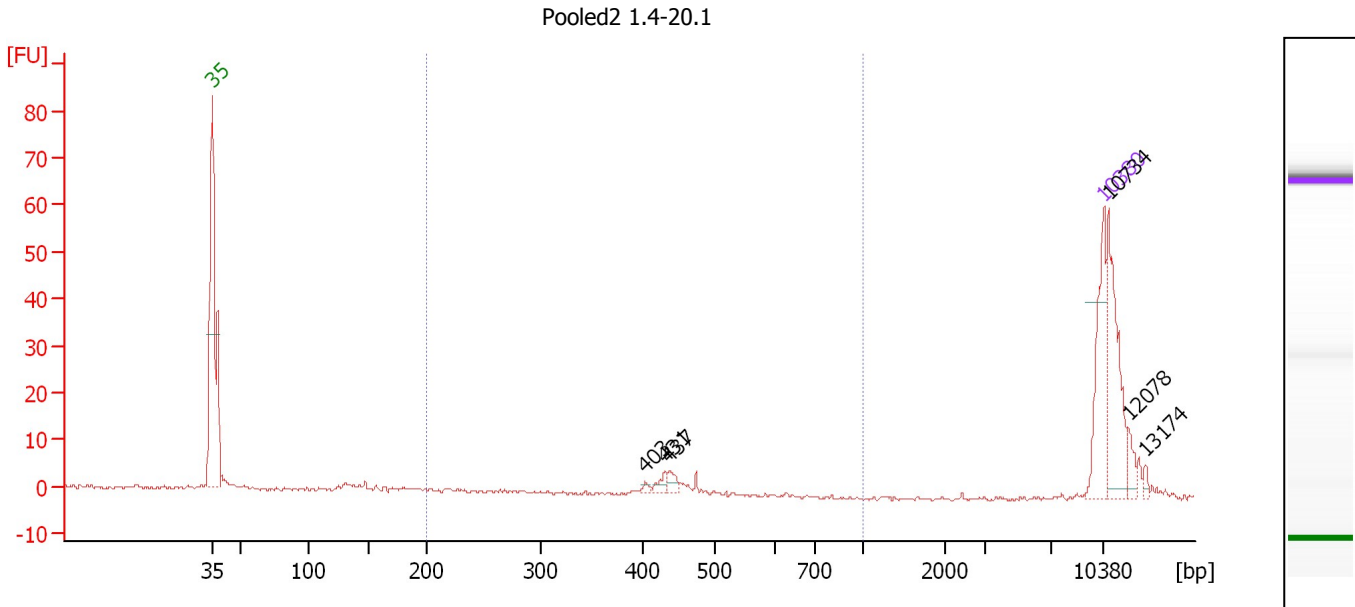
**Region table for sample 5 : pooled2 1.4-1**

From [bp]	Molarity [pmol/l]	Average Size [bp]	Conc. [pg/μl]	To [bp]	Corr. Area	% of Total	Size distribution in CV [%]	Color
200	1,700.2	455	479.97	1,000	636.1	75	21.5	Blue

Assay Class: High Sensitivity DNA Assay  
 Data Path: C:\...ents and Settings\Bioanalyzer\2012-04-20\2012-04-20\_005.xad

Created: 4/20/2012 2:56:40 PM  
 Modified: 4/20/2012 3:29:36 PM

**Electropherogram Summary Continued ...**



**Setpoint Deviations for sample 6 : Pooled2 1.4-20.1**

Height Threshold [FU] : 2

**Overall Results for sample 6 : Pooled2 1.4-20.1**

Number of peaks found: 6                      Corr. Area 1: 15.7  
 Noise: 0.4

**Peak table for sample 6 : Pooled2 1.4-20.1**

Peak	Size [bp]	Conc. [pg/μl]	Molarity [pmol/l]	Observations
1	35	125.00	5,411.3	Lower Marker
2	403	4.47	16.8	
3	431	10.31	36.2	
4	437	11.24	38.9	
5	10,380	75.00	10.9	Upper Marker
6	10,734	0.00	0.0	
7	12,078	0.00	0.0	
8	13,174	0.00	0.0	

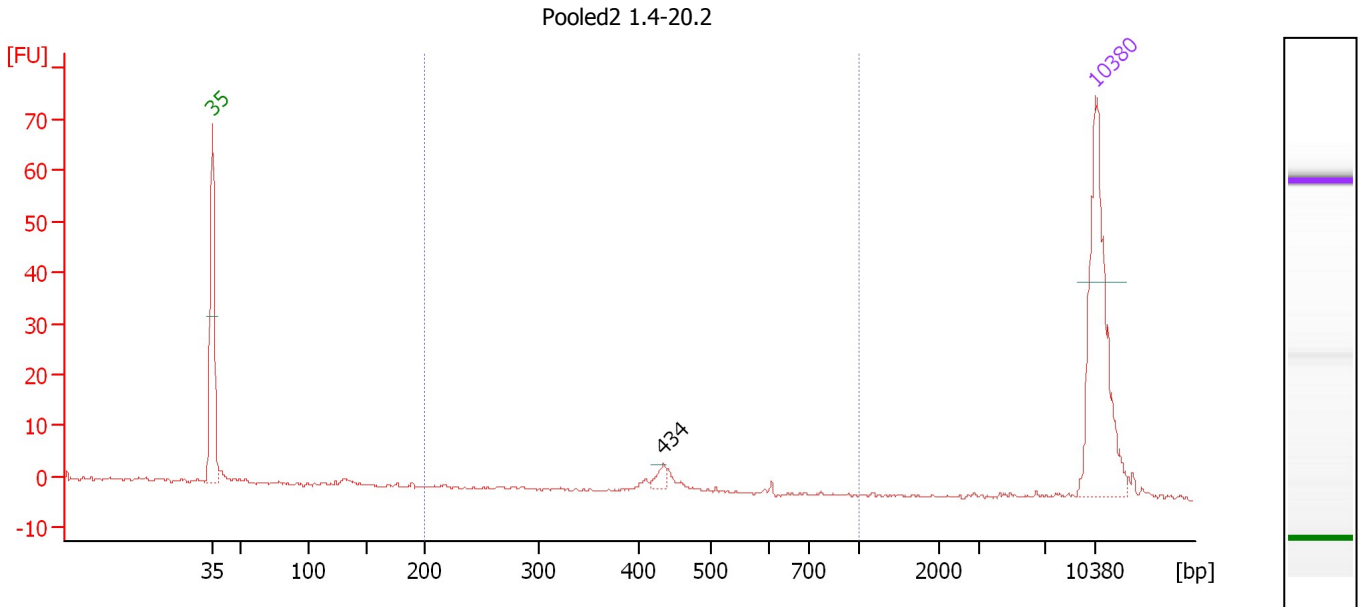
**Region table for sample 6 : Pooled2 1.4-20.1**

From [bp]	Molarity [pmol/l]	Average Size [bp]	Conc. [pg/μl]	To [bp]	Corr. Area	% of Total	Size distribution in CV [%]	Color
200	131.4	434	36.80	1,000	15.7	16	9.8	Blue

Assay Class: High Sensitivity DNA Assay  
 Data Path: C:\...ents and Settings\Bioanalyzer\2012-04-20\2012-04-20\_005.xad

Created: 4/20/2012 2:56:40 PM  
 Modified: 4/20/2012 3:29:36 PM

**Electropherogram Summary Continued ...**



**Overall Results for sample 7 : Pooled2 1.4-20.2**

Number of peaks found: 1                      Corr. Area 1: 11.5  
 Noise: 0.2

**Peak table for sample 7 : Pooled2 1.4-20.2**

Peak	Size [bp]	Conc. [pg/μl]	Molarity [pmol/l]	Observations
1	35	125.00	5,411.3	Lower Marker
2	434	5.86	20.5	
3	10,380	75.00	10.9	Upper Marker

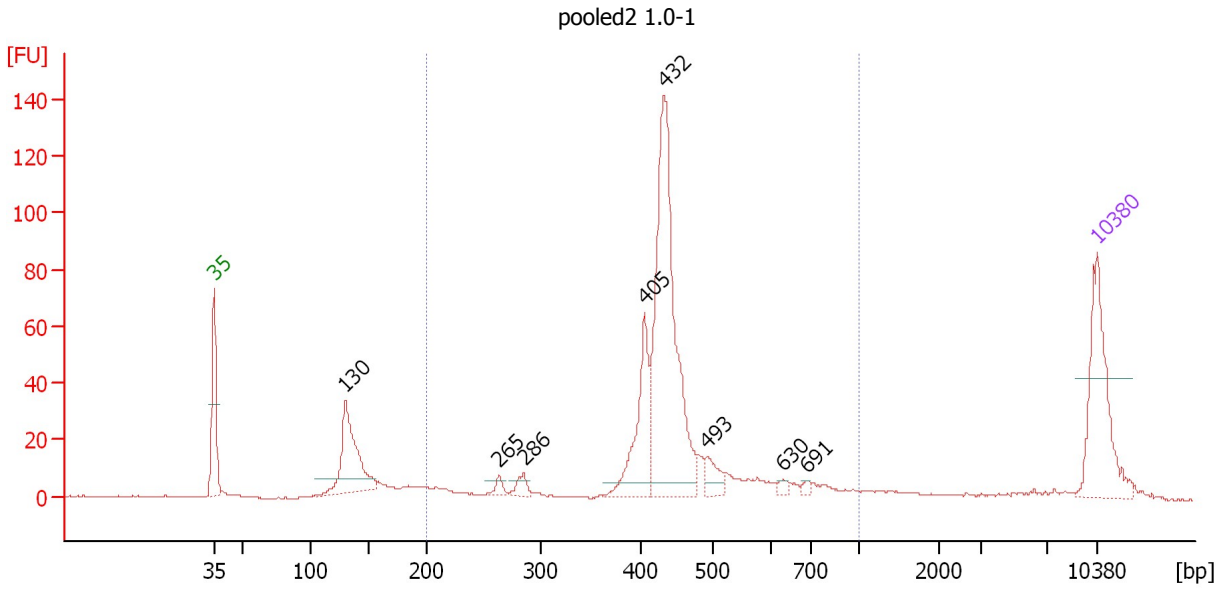
**Region table for sample 7 : Pooled2 1.4-20.2**

From [bp]	Molarity [pmol/l]	Average Size [bp]	Conc. [pg/μl]	To [bp]	Corr. Area	% of Total	Size distribution in CV [%]	Color
200	39.2	440	11.30	1,000	11.5	47	8.6	Blue

Assay Class: High Sensitivity DNA Assay  
 Data Path: C:\...ents and Settings\Bioanalyzer\2012-04-20\2012-04-20\_005.xad

Created: 4/20/2012 2:56:40 PM  
 Modified: 4/20/2012 3:29:36 PM

**Electropherogram Summary Continued ...**



**Overall Results for sample 8 : pooled2 1.0-1**

Number of peaks found: 8                      Corr. Area 1: 591.6  
 Noise: 0.2

**Peak table for sample 8 : pooled2 1.0-1**

Peak	Size [bp]	Conc. [pg/μl]	Molarity [pmol/l]	Observations
1	35	125.00	5,411.3	Lower Marker
2	130	113.14	1,319.8	
3	265	7.16	41.0	
4	286	11.39	60.3	
5	405	83.71	313.4	
6	432	289.15	1,013.1	
7	493	17.94	55.1	
8	630	4.23	10.2	
9	691	3.34	7.3	
10	10,380	75.00	10.9	Upper Marker

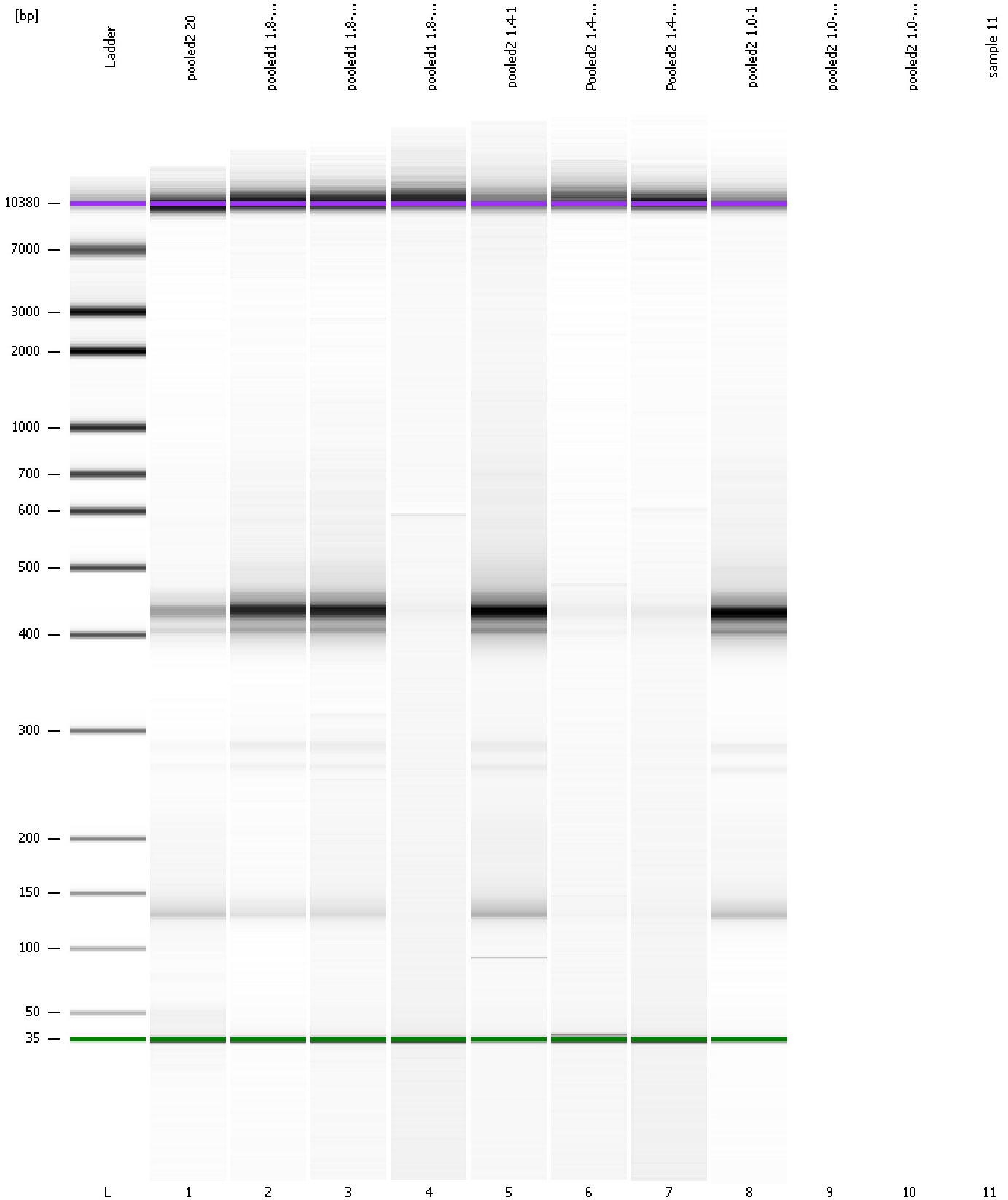
**Region table for sample 8 : pooled2 1.0-1**

From [bp]	Molarity [pmol/l]	Average Size [bp]	Conc. [pg/μl]	To [bp]	Corr. Area	% of Total	Size distribution in CV [%]	Color
200	1,863.7	453	517.42	1,000	591.6	76	23.3	Blue

Assay Class: High Sensitivity DNA Assay  
Data Path: C:\...ents and Settings\Bioanalyzer\2012-04-20\2012-04-20\_005.xad

Created: 4/20/2012 2:56:40 PM  
Modified: 4/20/2012 3:29:36 PM

**Gel Image**



Assay Class: High Sensitivity DNA Assay  
Data Path: C:\...ents and Settings\Bioanalyzer\2012-04-20\2012-04-20\_005.xad

Created: 4/20/2012 2:56:40 PM  
Modified: 4/20/2012 3:29:36 PM

**Invalid Samples**

Sample 9 has not been run, no results available.

Sample 10 has not been run, no results available.

Sample 11 has not been run, no results available.

Assay Class: High Sensitivity DNA Assay  
 Data Path: C:\...ents and Settings\Bioanalyzer\2012-04-20\2012-04-20\_005.xad

Created: 4/20/2012 2:56:40 PM  
 Modified: 4/20/2012 3:29:36 PM

**Run Logbook**

Description	Number	Source	Category	Sub Category	Time	Time Zone	User	Host
Run aborted on port 1		Instrument	Run		4/20/2012 3:29:34 PM	(GMT --07:00) Pacific Standard Time	UC Davis	D8XSMGH1
Run started on port 1 (File: C:\Documents and Settings\Bioanalyzer\2012-04-20\2012-04-20_005.xad)		Instrument	Run		4/20/2012 2:56:46 PM	(GMT --07:00) Pacific Standard Time	UC Davis	D8XSMGH1
Product Number : G2938B		Instrument	Run		4/20/2012 2:56:46 PM	(GMT --07:00) Pacific Standard Time	UC Davis	D8XSMGH1
Name :		Instrument	Run		4/20/2012 2:56:46 PM	(GMT --07:00) Pacific Standard Time	UC Davis	D8XSMGH1
Vendor : Agilent Technologies		Instrument	Run		4/20/2012 2:56:46 PM	(GMT --07:00) Pacific Standard Time	UC Davis	D8XSMGH1
Serial# : DE13701086		Instrument	Run		4/20/2012 2:56:46 PM	(GMT --07:00) Pacific Standard Time	UC Davis	D8XSMGH1
Firmware : C.01.069		Instrument	Run		4/20/2012 2:56:46 PM	(GMT --07:00) Pacific Standard Time	UC Davis	D8XSMGH1
Cartridge : Electrode		Instrument	Run		4/20/2012 2:56:46 PM	(GMT --07:00) Pacific Standard Time	UC Davis	D8XSMGH1