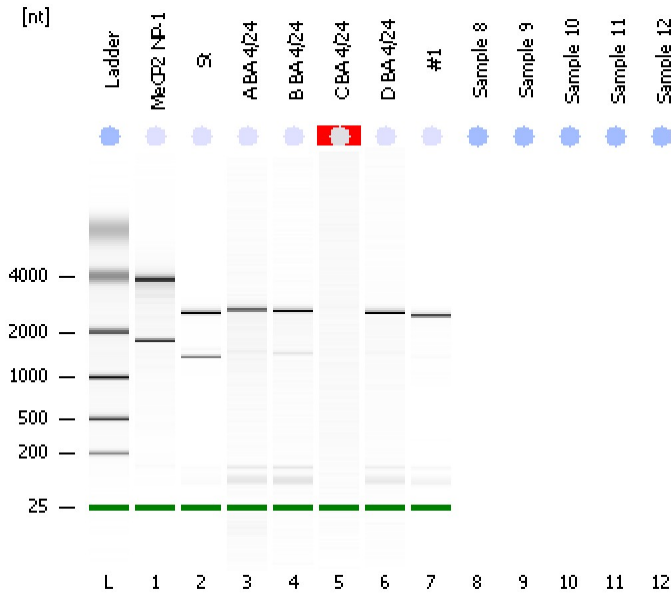


Assay Class: Eukaryote Total RNA Nano
Data Path: C:\...ents and Settings\Bioanalyzer\2012-04-24\2012-04-24_003.xad

Created: 4/24/2012 4:15:27 PM
Modified: 4/24/2012 4:41:58 PM

Electrophoresis File Run Summary



Instrument Information:

Instrument Name: DE13701086 Firmware: C.01.069
Serial#: DE13701086 Type: G2938B

Assay Information:

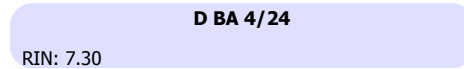
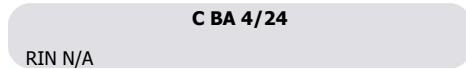
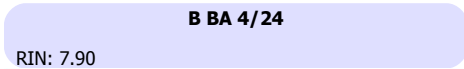
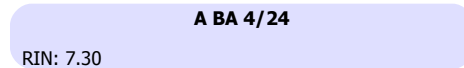
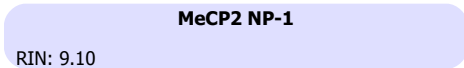
Assay Origin Path: C:\Program Files\Agilent\2100 bioanalyzer\2100 expert\assays\RNA\Eukaryote Total RNA Nano Series II.xsy

Assay Class: Eukaryote Total RNA Nano
Version: 2.6
Assay Comments: Total RNA Analysis ng sensitivity (Eukaryote)

© Copyright 2003 - 2009 Agilent Technologies, Inc.

Chip Information:

Chip Lot #: Reagent Kit Lot #: Chip Comments:



Assay Class: Eukaryote Total RNA Nano
 Data Path: C:\...ents and Settings\Bioanalyzer\2012-04-24\2012-04-24_003.xad

Created: 4/24/2012 4:15:27 PM
 Modified: 4/24/2012 4:41:58 PM

Electrophoresis File Run Summary (Chip Summary)

Sample Name	Sample Comment	Status	Result Label	Result Color
MeCP2 NP-1		✓	RIN: 9.10	
St		✓	RIN:10	
A BA 4/24		✓	RIN: 7.30	
B BA 4/24		✓	RIN: 7.90	
C BA 4/24		✓	RIN N/A	
D BA 4/24		✓	RIN: 7.30	
#1		✓	RIN: 7.20	
Sample 8				
Sample 9				
Sample 10				
Sample 11				
Sample 12				
Ladder		✓	All Other Samples	

Chip Lot #

Reagent Kit Lot #

Chip Comments :

Assay Class: Eukaryote Total RNA Nano
Data Path: C:\...ents and Settings\Bioanalyzer\2012-04-24\2012-04-24_003.xad

Created: 4/24/2012 4:15:27 PM
Modified: 4/24/2012 4:41:58 PM

Electrophoresis Assay Details

General Analysis Settings

Number of Available Sample and Ladder Wells (Max.) : 13
Minimum Visible Range [s] : 17
Maximum Visible Range [s] : 70
Start Analysis Time Range [s] : 19
End Analysis Time Range [s] : 69
Ladder Concentration [ng/μl] : 150
Lower Marker Concentration [ng/μl] : 0
Upper Marker Concentration [ng/μl] : 0
Used Lower Marker for Quantitation
Standard Curve Fit is Logarithmic
Show Data Aligned to Lower Marker

Integrator Settings

Integration Start Time [s] : 19
Integration End Time [s] : 69
Slope Threshold : 0.6
Height Threshold [FU] : 0.5
Area Threshold : 0.2
Width Threshold [s] : 0.5
Baseline Plateau [s] : 6

Filter Settings

Filter Width [s] : 0.5
Polynomial Order : 4

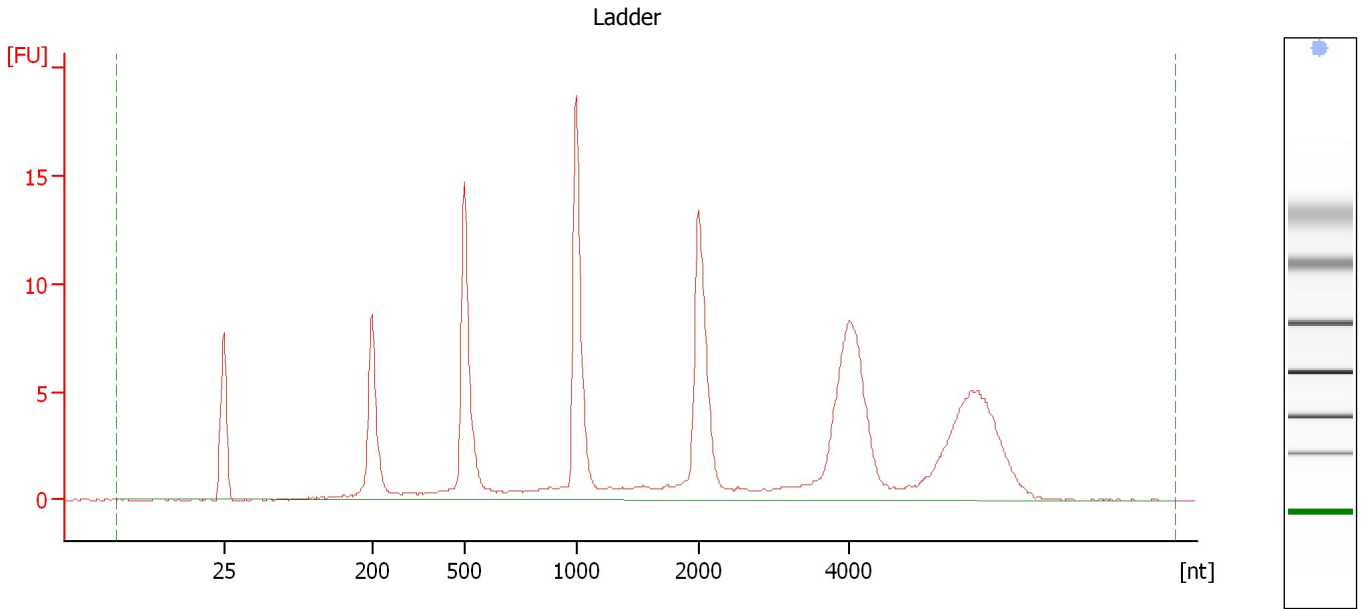
Ladder

Ladder Peak	Size
1	25
2	200
3	500
4	1000
5	2000
6	4000

Assay Class: Eukaryote Total RNA Nano
Data Path: C:\...ents and Settings\Bioanalyzer\2012-04-24\2012-04-24_003.xad

Created: 4/24/2012 4:15:27 PM
Modified: 4/24/2012 4:41:58 PM

Electropherogram Summary



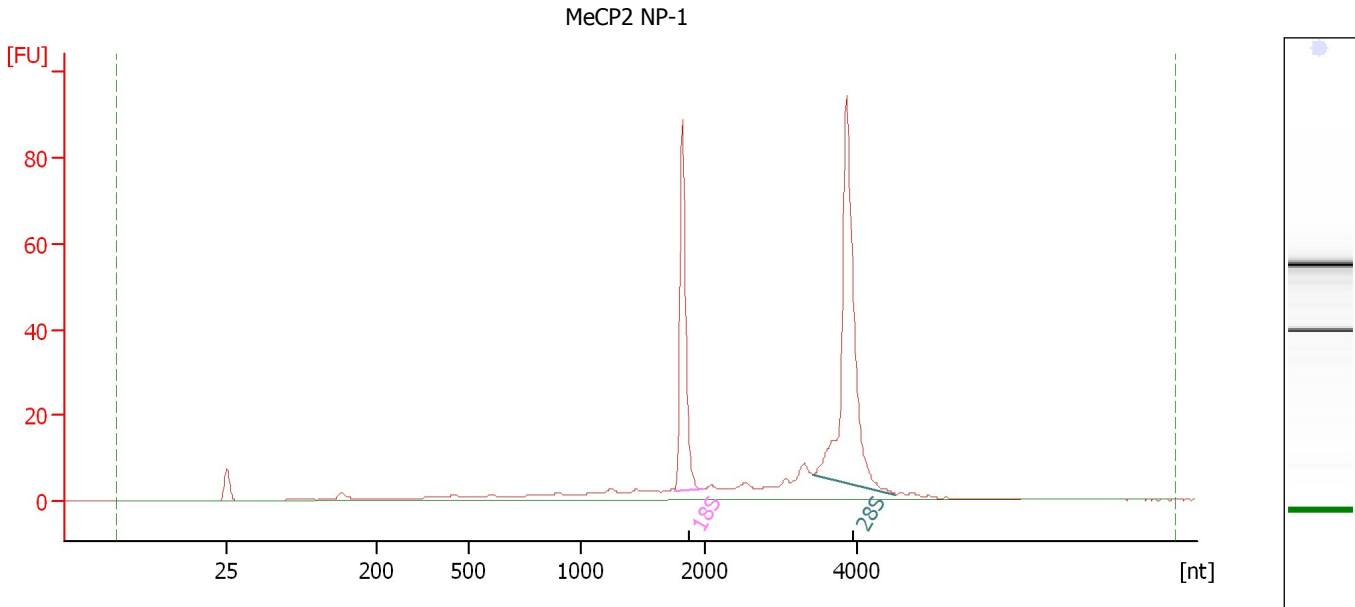
Overall Results for Ladder

RNA Area:	142.0	Result Flagging Color:	
RNA Concentration:	150 ng/μl	Result Flagging Label:	All Other Samples

Assay Class: Eukaryote Total RNA Nano
 Data Path: C:\...ents and Settings\Bioanalyzer\2012-04-24\2012-04-24_003.xad

Created: 4/24/2012 4:15:27 PM
 Modified: 4/24/2012 4:41:58 PM

Electropherogram Summary Continued ...



Setpoint Deviations for sample 1 : MeCP2 NP-1

Height Threshold [FU] : 5

Overall Results for sample 1 : MeCP2 NP-1

RNA Area:	300.6	RNA Integrity Number (RIN):	9.1 (B.02.08)
RNA Concentration:	317 ng/μl	Result Flagging Color:	
rRNA Ratio [28s / 18s]:	1.7	Result Flagging Label:	RIN: 9.10

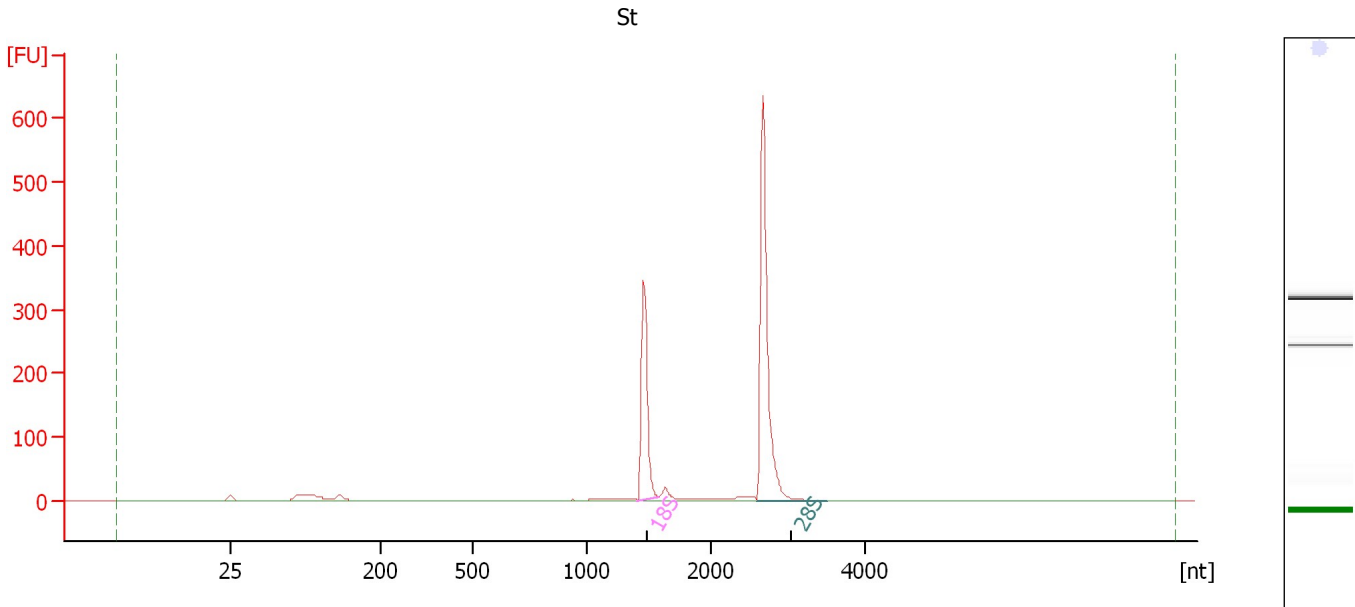
Fragment table for sample 1 : MeCP2 NP-1

Name	Start Size [nt]	End Size [nt]	Area	% of total Area
18S	1,767	1,993	63.0	21.0
28S	3,431	4,509	109.3	36.4

Assay Class: Eukaryote Total RNA Nano
 Data Path: C:\...ents and Settings\Bioanalyzer\2012-04-24\2012-04-24_003.xad

Created: 4/24/2012 4:15:27 PM
 Modified: 4/24/2012 4:41:58 PM

Electropherogram Summary Continued ...



Overall Results for sample 2 : St

RNA Area:	875.5	RNA Integrity Number (RIN):	10 (B.02.08, Anomaly Threshold(s) manually adapted)
RNA Concentration:	925 ng/μl	Result Flagging Color:	
rRNA Ratio [28s / 18s]:	2.1	Result Flagging Label:	RIN:10

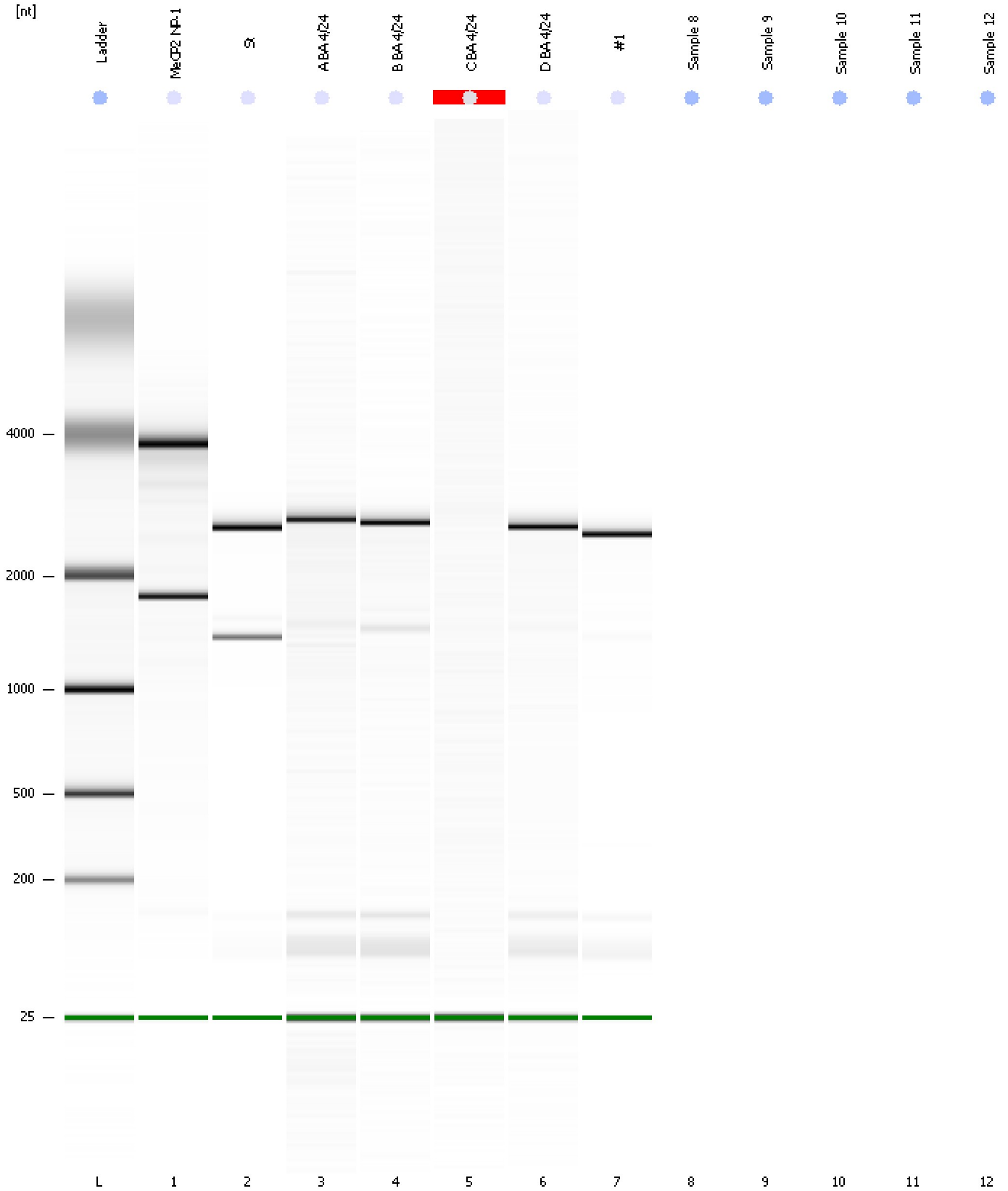
Fragment table for sample 2 : St

Name	Start Size [nt]	End Size [nt]	Area	% of total Area
18S	1,406	1,580	235.2	26.9
28S	2,592	3,524	498.7	57.0

Assay Class: Eukaryote Total RNA Nano
Data Path: C:\...ents and Settings\Bioanalyzer\2012-04-24\2012-04-24_003.xad

Created: 4/24/2012 4:15:27 PM
Modified: 4/24/2012 4:41:58 PM

Gel Image



Assay Class: Eukaryote Total RNA Nano
 Data Path: C:\...ents and Settings\Bioanalyzer\2012-04-24\2012-04-24_003.xad

Created: 4/24/2012 4:15:27 PM
 Modified: 4/24/2012 4:41:58 PM

Run Logbook

Description	Number	Source	Category	Sub Category	Time	Time Zone	User	Host
Run ended on port 1 (Number of wells acquired: 8)		Instrument	Run		4/24/2012 4:32:21 PM	(GMT --07:00) Pacific Standard Time	UC Davis	D8XSMGH1
Run started on port 1 (File: C:\Documents and Settings\Bioanalyzer\2012-04-24\2012-04-24_003.xad)		Instrument	Run		4/24/2012 4:15:28 PM	(GMT --07:00) Pacific Standard Time	UC Davis	D8XSMGH1
Product Number : G2938B		Instrument	Run		4/24/2012 4:15:28 PM	(GMT --07:00) Pacific Standard Time	UC Davis	D8XSMGH1
Name :		Instrument	Run		4/24/2012 4:15:28 PM	(GMT --07:00) Pacific Standard Time	UC Davis	D8XSMGH1
Vendor : Agilent Technologies		Instrument	Run		4/24/2012 4:15:28 PM	(GMT --07:00) Pacific Standard Time	UC Davis	D8XSMGH1
Serial# : DE13701086		Instrument	Run		4/24/2012 4:15:28 PM	(GMT --07:00) Pacific Standard Time	UC Davis	D8XSMGH1
Firmware : C.01.069		Instrument	Run		4/24/2012 4:15:28 PM	(GMT --07:00) Pacific Standard Time	UC Davis	D8XSMGH1
Cartridge : Electrode		Instrument	Run		4/24/2012 4:15:28 PM	(GMT --07:00) Pacific Standard Time	UC Davis	D8XSMGH1