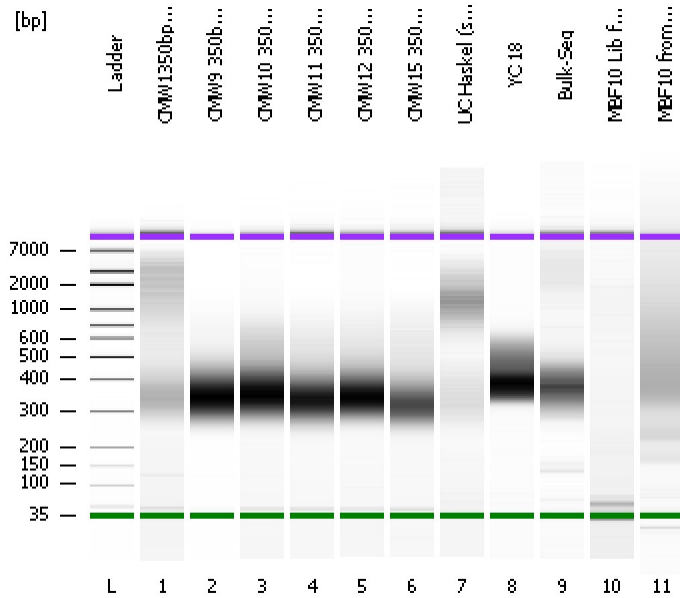


Assay Class: High Sensitivity DNA Assay  
Data Path: C:\...ents and Settings\Bioanalyzer\2012-04-25\2012-04-25\_001.xad

Created: 4/25/2012 9:17:39 AM  
Modified: 4/25/2012 9:59:58 AM

Electrophoresis File Run Summary



Instrument Information:

Instrument Name: DE13701086      Firmware: C.01.069  
Serial#: DE13701086      Type: G2938B

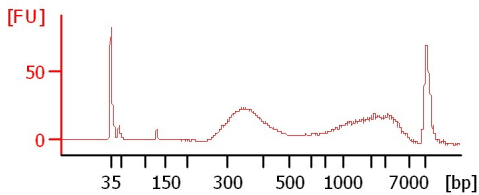
Assay Information:

Assay Origin Path: C:\Program Files\Agilent\2100 bioanalyzer\2100 expert\assays\dsDNA\High Sensitivity DNA.xsy  
Assay Class: High Sensitivity DNA Assay  
Version: 1.03  
Assay Comments: Copyright © 2003-2010 Agilent Technologies

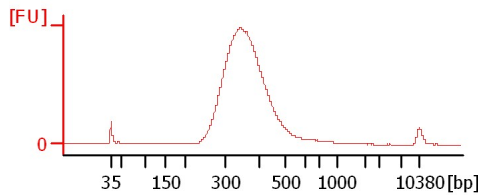
Chip Information:

Chip Lot #:   
Reagent Kit Lot #:   
Chip Comments:

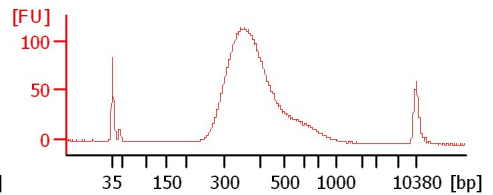
CMW1350bp Lib re-do 4/24/12



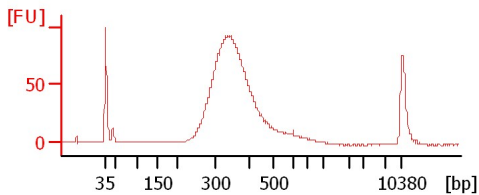
CMW9 350bp Lib 4/20/12



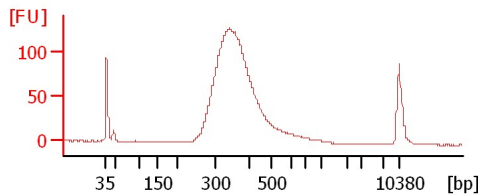
CMW10 350bp Lib 4/20/12



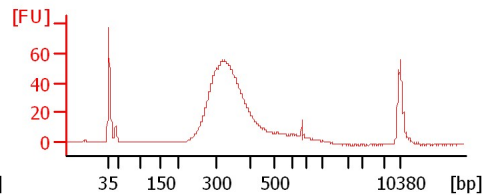
CMW11 350bp Lib 4/20/12



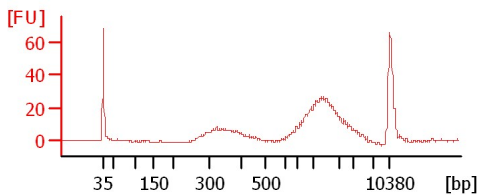
CMW12 350bp Lib 4/20/12



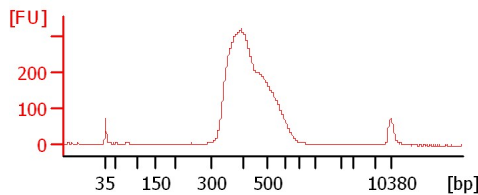
CMW15 350bp Lib 4/24/12



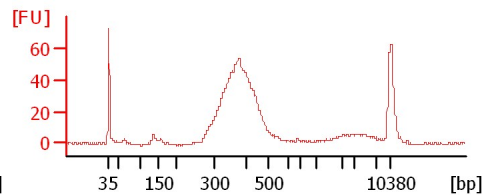
UC Haskel (submitted 4/22)



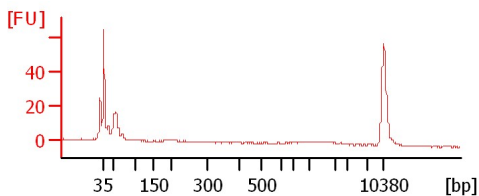
YC 18



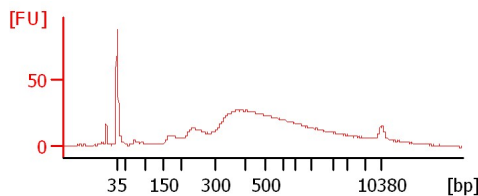
Bulk-Seq



MBF10 Lib for MiSeq



MBF10 from KK



Assay Class: High Sensitivity DNA Assay  
 Data Path: C:\...ents and Settings\Bioanalyzer\2012-04-25\2012-04-25\_001.xad

Created: 4/25/2012 9:17:39 AM  
 Modified: 4/25/2012 9:59:58 AM

**Electrophoresis File Run Summary (Chip Summary)**

Sample Name	Sample Comment	Rest. Digest	Status	Observation	Result Label	Result Color
CMW1350bp Lib re-do 4/24/12		<input type="checkbox"/>	✓			
CMW9 350bp Lib 4/20/12		<input type="checkbox"/>	✓			
CMW10 350bp Lib 4/20/12		<input type="checkbox"/>	✓			
CMW11 350bp Lib 4/20/12		<input type="checkbox"/>	✓			
CMW12 350bp Lib 4/20/12		<input type="checkbox"/>	✓			
CMW15 350bp Lib 4/24/12		<input type="checkbox"/>	✓			
UC Haskel (submitted 4/22)		<input type="checkbox"/>	✓			
YC 18		<input type="checkbox"/>	✓			
Bulk-Seg		<input type="checkbox"/>	✓			
MBF10 Lib for MiSeq		<input type="checkbox"/>	✓			
MBF10 from KK		<input type="checkbox"/>	✓			
Ladder		<input type="checkbox"/>	✓			

**Chip Lot #**

**Reagent Kit Lot #**

**Chip Comments :**

Assay Class: High Sensitivity DNA Assay  
Data Path: C:\...ents and Settings\Bioanalyzer\2012-04-25\2012-04-25\_001.xad

Created: 4/25/2012 9:17:39 AM  
Modified: 4/25/2012 9:59:58 AM

**Electrophoresis Assay Details**

**General Analysis Settings**

Number of Available Sample and Ladder Wells (Max.) : 12  
Minimum Visible Range [s] : 32  
Maximum Visible Range [s] : 138  
Start Analysis Time Range [s] : 33  
End Analysis Time Range [s] : 137.5  
Ladder Concentration [pg/μl] : 1950  
Uses Standard Area for Ladder Fragments  
Lower Marker Concentration [pg/μl] : 125  
Upper Marker Concentration [pg/μl] : 75  
Used Upper Marker for Quantitation  
Standard Curve Fit is Point to Point  
Show Data Aligned to Lower and Upper Marker

**Integrator Settings**

Integration Start Time [s] : 33.05  
Integration End Time [s] : 137  
Slope Threshold : 0.8  
Height Threshold [FU] : 5  
Area Threshold : 0.1  
Width Threshold [s] : 0.6  
Baseline Plateau [s] : 0.5

**Filter Settings**

Filter Width [s] : 0.5  
Polynomial Order : 4

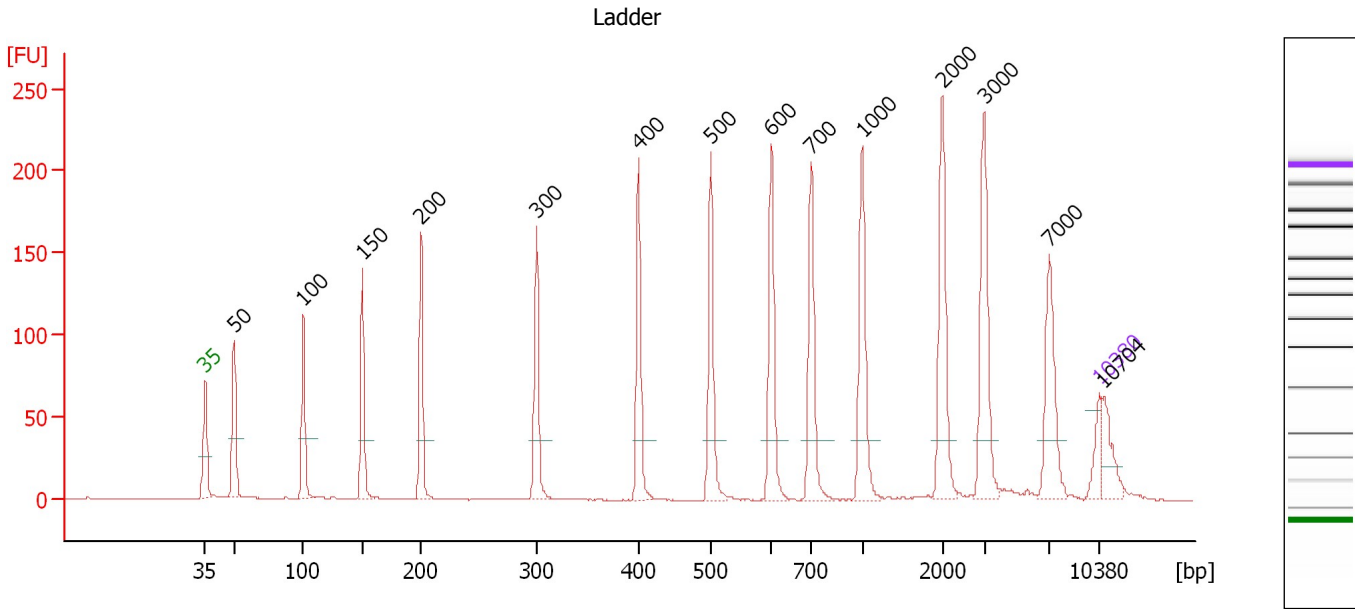
**Ladder**

Ladder Peak	Size	Area
1	35	160
2	50	210
3	100	208
4	150	221
5	200	242
6	300	270
7	400	305
8	500	306
9	600	336
10	700	321
11	1000	366
12	2000	413
13	3000	411
14	7000	400
15	10380	214

Assay Class: High Sensitivity DNA Assay  
 Data Path: C:\...ents and Settings\Bioanalyzer\2012-04-25\2012-04-25\_001.xad

Created: 4/25/2012 9:17:39 AM  
 Modified: 4/25/2012 9:59:58 AM

**Electropherogram Summary**



**Overall Results for Ladder**

Noise: 0.2

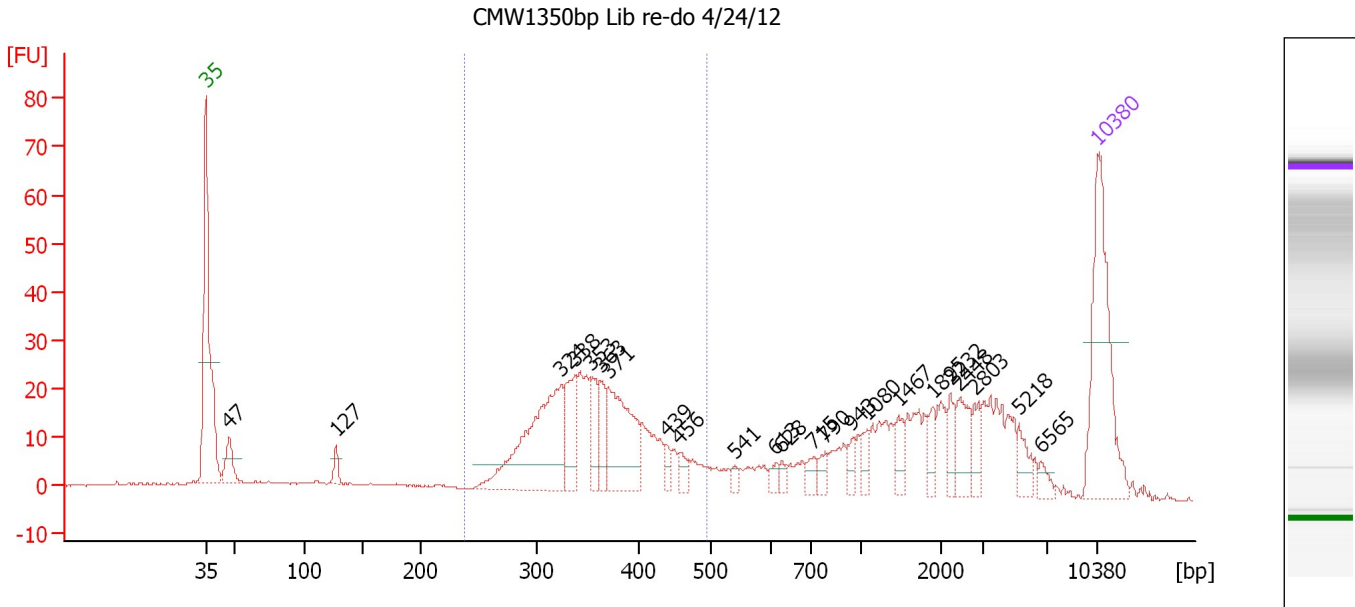
**Peak table for Ladder**

Peak	Size [bp]	Conc. [pg/μl]	Molarity [pmol/l]	Observations
1	35	125.00	5,411.3	Lower Marker
2	50	150.00	4,545.5	Ladder Peak
3	100	150.00	2,272.7	Ladder Peak
4	150	150.00	1,515.2	Ladder Peak
5	200	150.00	1,136.4	Ladder Peak
6	300	150.00	757.6	Ladder Peak
7	400	150.00	568.2	Ladder Peak
8	500	150.00	454.5	Ladder Peak
9	600	150.00	378.8	Ladder Peak
10	700	150.00	324.7	Ladder Peak
11	1,000	150.00	227.3	Ladder Peak
12	2,000	150.00	113.6	Ladder Peak
13	3,000	150.00	75.8	Ladder Peak
14	7,000	150.00	32.5	Ladder Peak
15	10,380	75.00	10.9	Upper Marker
16	10,704	0.00	0.0	

Assay Class: High Sensitivity DNA Assay  
 Data Path: C:\...ents and Settings\Bioanalyzer\2012-04-25\2012-04-25\_001.xad

Created: 4/25/2012 9:17:39 AM  
 Modified: 4/25/2012 9:59:58 AM

**Electropherogram Summary Continued ...**



**Overall Results for sample 1 : CMW1350bp Lib re-do 4/24/12**

Number of peaks found: 23                      Corr. Area 1: 362.2  
 Noise: 0.2

**Peak table for sample 1 : CMW1350bp Lib re-do 4/24/12**

Peak	Size [bp]	Conc. [pg/μl]	Molarity [pmol/l]	Observations
1	35	125.00	5,411.3	Lower Marker
2	47	24.02	770.3	
3	127	9.48	112.8	
4	324	124.88	583.3	
5	338	38.72	173.6	
6	353	26.74	114.7	
7	363	19.38	80.8	
8	371	71.25	291.3	
9	439	7.24	25.0	
10	456	8.35	27.7	
11	541	3.86	10.8	
12	613	4.72	11.7	
13	628	4.23	10.2	
14	715	7.33	15.5	
15	790	7.12	13.7	
16	943	6.19	9.9	
17	1,080	7.95	11.2	
18	1,467	11.17	11.5	
19	1,895	8.57	6.8	
20	2,232	11.15	7.6	
21	2,448	18.71	11.6	
22	2,803	10.45	5.6	
23	5,218	10.34	3.0	
24	6,565	5.28	1.2	
25	10,380	75.00	10.9	Upper Marker

Assay Class: High Sensitivity DNA Assay  
Data Path: C:\...ents and Settings\Bioanalyzer\2012-04-25\2012-04-25\_001.xad

Created: 4/25/2012 9:17:39 AM  
Modified: 4/25/2012 9:59:58 AM

**Electropherogram Summary Continued ...**

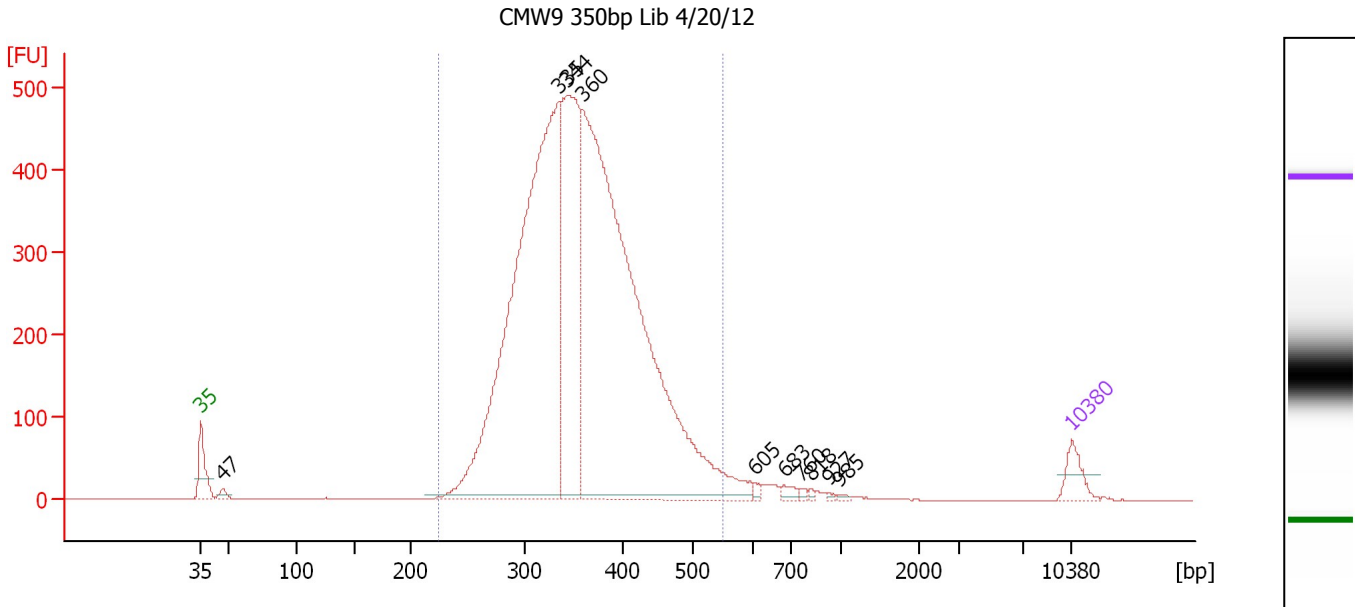
... Region table for sample 1 : CMW1350bp Lib re-do 4/24/12

From [bp]	Molarity [pmol/l]	Average Size [bp]	Conc. [pg/μl]	To [bp]	Corr. Area	% of Total	Size distribution in CV [%]	Color
238	1,771.6	359	408.17	495	362.2	46	14.7	■

Assay Class: High Sensitivity DNA Assay  
 Data Path: C:\...ents and Settings\Bioanalyzer\2012-04-25\2012-04-25\_001.xad

Created: 4/25/2012 9:17:39 AM  
 Modified: 4/25/2012 9:59:58 AM

**Electropherogram Summary Continued ...**



**Overall Results for sample 2 : CMW9 350bp Lib 4/20/12**

Number of peaks found: 10                      Corr. Area 1: 7,634.9  
 Noise: 0.2

**Peak table for sample 2 : CMW9 350bp Lib 4/20/12**

Peak	Size [bp]	Conc. [pg/μl]	Molarity [pmol/l]	Observations
1	35	125.00	5,411.3	Lower Marker
2	47	30.91	996.9	
3	335	3,487.70	15,794.0	
4	344	1,382.37	6,084.0	
5	360	4,084.30	17,196.8	
6	605	17.16	43.0	
7	683	25.92	57.5	
8	760	10.68	21.3	
9	818	7.40	13.7	
10	927	6.14	10.0	
11	985	6.77	10.4	
12	10,380	75.00	10.9	Upper Marker

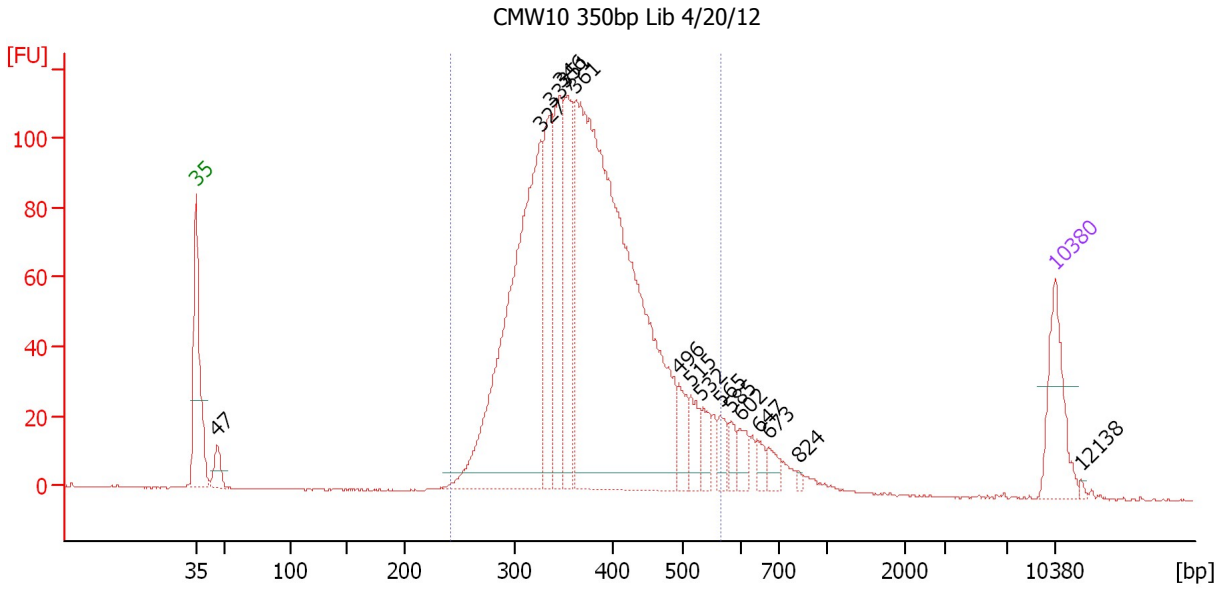
**Region table for sample 2 : CMW9 350bp Lib 4/20/12**

From [bp]	Molarity [pmol/l]	Average Size [bp]	Conc. [pg/μl]	To [bp]	Corr. Area	% of Total	Size distribution in CV [%]	Color
225	38,329.4	359	8,800.58	552	7,634.9	97	16.0	Blue

Assay Class: High Sensitivity DNA Assay  
 Data Path: C:\...ents and Settings\Bioanalyzer\2012-04-25\2012-04-25\_001.xad

Created: 4/25/2012 9:17:39 AM  
 Modified: 4/25/2012 9:59:58 AM

**Electropherogram Summary Continued ...**



**Overall Results for sample 3 : CMW10 350bp Lib 4/20/12**

Number of peaks found: 16                      Corr. Area 1: 1,872.7  
 Noise: 0.2

**Peak table for sample 3 : CMW10 350bp Lib 4/20/12**

Peak	Size [bp]	Conc. [pg/μl]	Molarity [pmol/l]	Observations
1	35	125.00	5,411.3	Lower Marker
2	47	36.58	1,190.5	
3	327	673.46	3,122.9	
4	337	180.21	811.3	
5	346	185.10	809.7	
6	351	175.78	758.2	
7	361	1,170.52	4,911.9	
8	496	42.94	131.2	
9	515	35.45	104.2	
10	532	32.67	93.1	
11	565	26.48	70.9	
12	585	19.92	51.6	
13	602	23.86	60.1	
14	647	13.80	32.3	
15	673	16.47	37.1	
16	824	3.81	7.0	
17	10,380	75.00	10.9	Upper Marker
18	12,138	0.00	0.0	

**Region table for sample 3 : CMW10 350bp Lib 4/20/12**

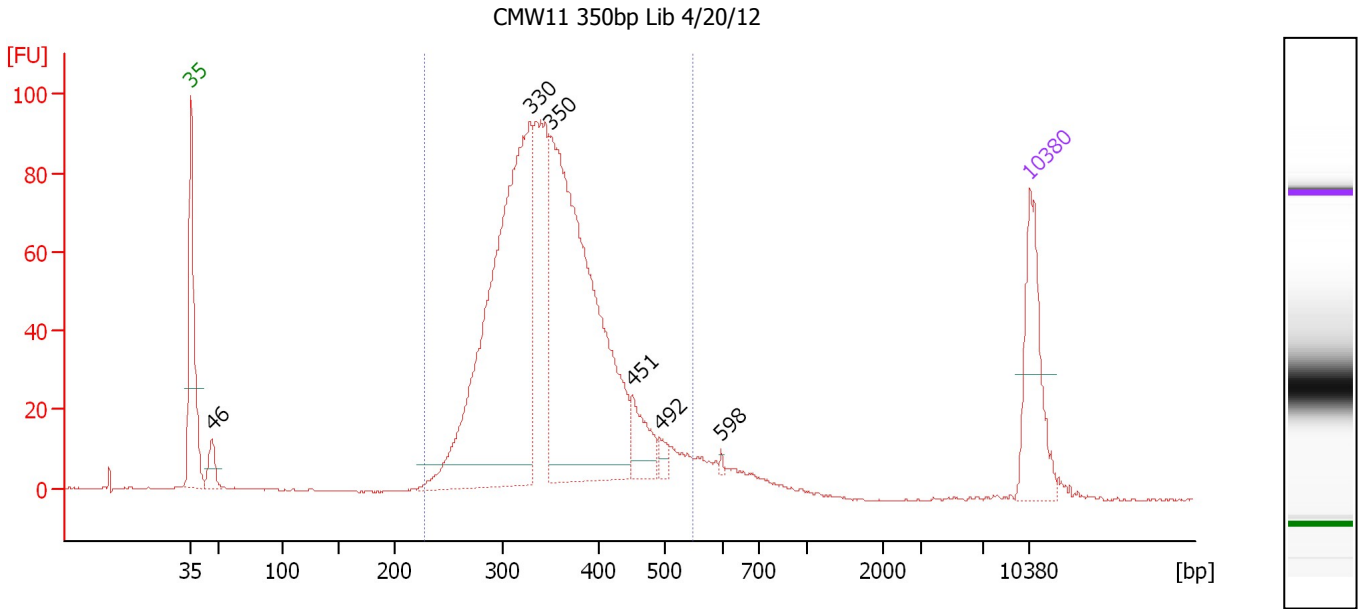
From [bp]	Molarity [pmol/l]	Average Size [bp]	Conc. [pg/μl]	To [bp]	Corr. Area	% of Total	Size distribution in CV [%]	Color
241	10,657.0	376	2,547.02	568	1,872.7	92	17.6	Blue



Assay Class: High Sensitivity DNA Assay  
 Data Path: C:\...ents and Settings\Bioanalyzer\2012-04-25\2012-04-25\_001.xad

Created: 4/25/2012 9:17:39 AM  
 Modified: 4/25/2012 9:59:58 AM

**Electropherogram Summary Continued ...**



**Overall Results for sample 4 : CMW11 350bp Lib 4/20/12**

Number of peaks found: 6                      Corr. Area 1: 1,402.9  
 Noise: 0.1

**Peak table for sample 4 : CMW11 350bp Lib 4/20/12**

Peak	Size [bp]	Conc. [pg/μl]	Molarity [pmol/l]	Observations
1	35	125.00	5,411.3	Lower Marker
2	46	27.90	913.9	
3	330	582.86	2,676.9	
4	350	533.29	2,308.6	
5	451	43.43	145.9	
6	492	9.41	29.0	
7	598	2.33	5.9	
8	10,380	75.00	10.9	Upper Marker

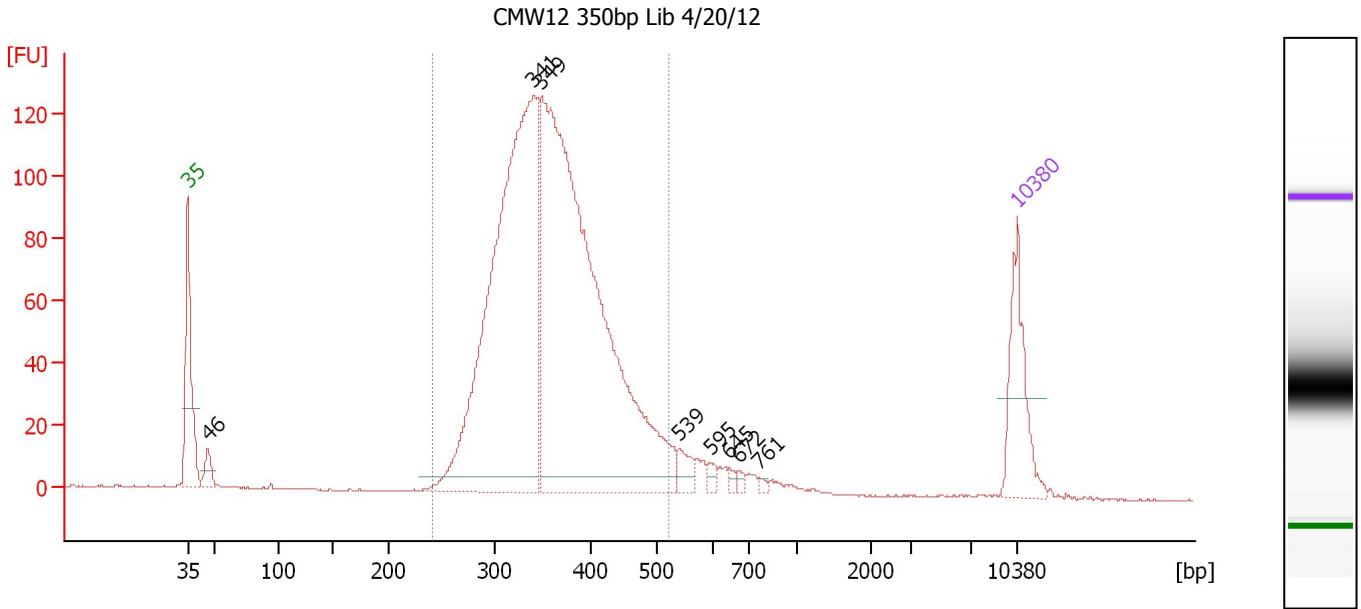
**Region table for sample 4 : CMW11 350bp Lib 4/20/12**

From [bp]	Molarity [pmol/l]	Average Size [bp]	Conc. [pg/μl]	To [bp]	Corr. Area	% of Total	Size distribution in CV [%]	Color
228	6,414.1	354	1,447.29	549	1,402.8	94	16.6	Blue

Assay Class: High Sensitivity DNA Assay  
 Data Path: C:\...ents and Settings\Bioanalyzer\2012-04-25\2012-04-25\_001.xad

Created: 4/25/2012 9:17:39 AM  
 Modified: 4/25/2012 9:59:58 AM

**Electropherogram Summary Continued ...**



**Overall Results for sample 5 : CMW12 350bp Lib 4/20/12**

Number of peaks found: 8                      Corr. Area 1: 1,823.6  
 Noise: 0.2

**Peak table for sample 5 : CMW12 350bp Lib 4/20/12**

Peak	Size [bp]	Conc. [pg/μl]	Molarity [pmol/l]	Observations
1	35	125.00	5,411.3	Lower Marker
2	46	26.98	881.4	
3	341	815.59	3,628.6	
4	349	1,012.18	4,394.0	
5	539	20.76	58.3	
6	595	8.12	20.7	
7	645	5.16	12.1	
8	672	5.30	11.9	
9	761	3.65	7.3	
10	10,380	75.00	10.9	Upper Marker

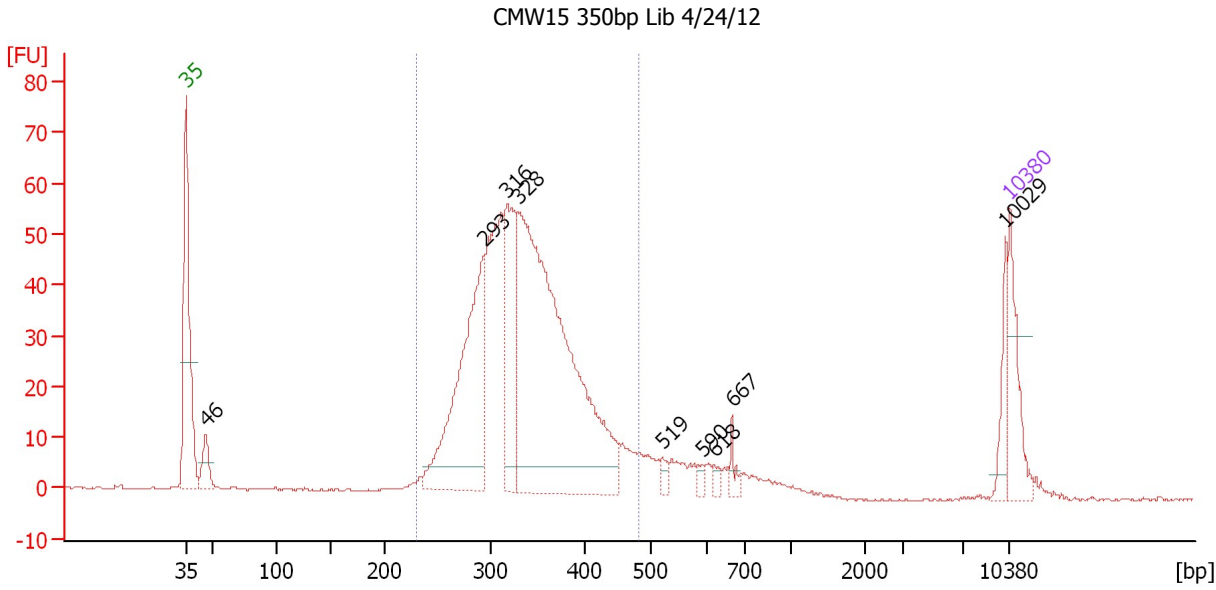
**Region table for sample 5 : CMW12 350bp Lib 4/20/12**

From [bp]	Molarity [pmol/l]	Average Size [bp]	Conc. [pg/μl]	To [bp]	Corr. Area	% of Total	Size distribution in CV [%]	Color
241	7,781.7	361	1,802.43	523	1,823.6	93	14.9	Blue

Assay Class: High Sensitivity DNA Assay  
 Data Path: C:\...ents and Settings\Bioanalyzer\2012-04-25\2012-04-25\_001.xad

Created: 4/25/2012 9:17:39 AM  
 Modified: 4/25/2012 9:59:58 AM

**Electropherogram Summary Continued ...**



**Overall Results for sample 6 : CMW15 350bp Lib 4/24/12**

Number of peaks found: 9                      Corr. Area 1: 798.4  
 Noise: 0.2

**Peak table for sample 6 : CMW15 350bp Lib 4/24/12**

Peak	Size [bp]	Conc. [pg/μl]	Molarity [pmol/l]	Observations
1	35	125.00	5,411.3	Lower Marker
2	46	54.29	1,782.3	
3	293	425.48	2,196.6	
4	316	226.25	1,083.3	
5	328	924.02	4,263.3	
6	519	13.27	38.8	
7	590	9.74	25.0	
8	618	10.82	26.5	
9	667	16.05	36.5	
10	10,029	41.26	6.2	
11	10,380	75.00	10.9	Upper Marker

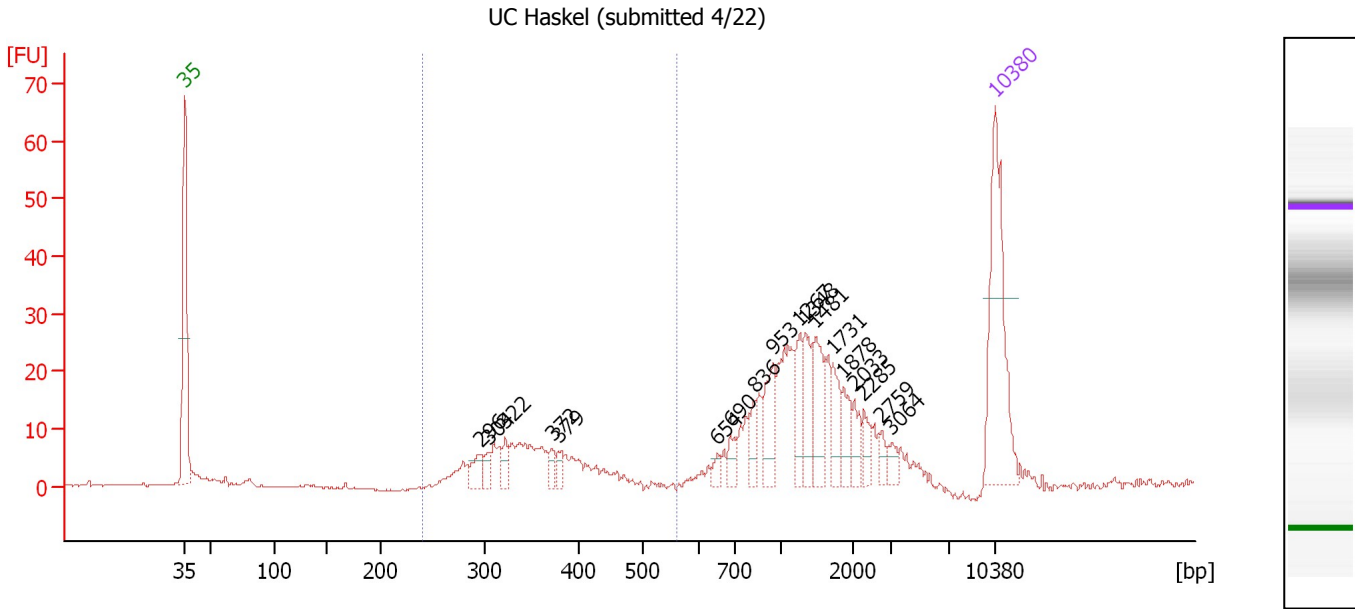
**Region table for sample 6 : CMW15 350bp Lib 4/24/12**

From [bp]	Molarity [pmol/l]	Average Size [bp]	Conc. [pg/μl]	To [bp]	Corr. Area	% of Total	Size distribution in CV [%]	Color
230	8,718.1	336	1,879.14	482	798.4	85	14.7	Blue

Assay Class: High Sensitivity DNA Assay  
 Data Path: C:\...ents and Settings\Bioanalyzer\2012-04-25\2012-04-25\_001.xad

Created: 4/25/2012 9:17:39 AM  
 Modified: 4/25/2012 9:59:58 AM

**Electropherogram Summary Continued ...**



**Overall Results for sample 7 : UC Haskel (submitted 4/22)**

Number of peaks found: 18                      Corr. Area 1: 100.9  
 Noise: 0.2

**Peak table for sample 7 : UC Haskel (submitted 4/22)**

Peak	Size [bp]	Conc. [pg/μl]	Molarity [pmol/l]	Observations
1	35	125.00	5,411.3	Lower Marker
2	296	12.85	65.9	
3	304	8.29	41.3	
4	322	10.11	47.7	
5	372	7.49	30.5	
6	379	7.52	30.1	
7	654	5.68	13.2	
8	690	9.43	20.7	
9	836	10.94	19.8	
10	953	26.67	42.4	
11	1,267	21.26	25.4	
12	1,348	22.42	25.2	
13	1,481	29.34	30.0	
14	1,731	16.49	14.4	
15	1,878	13.81	11.1	
16	2,033	10.14	7.6	
17	2,285	9.36	6.2	
18	2,759	6.16	3.4	
19	3,064	6.06	3.0	
20	10,380	75.00	10.9	Upper Marker

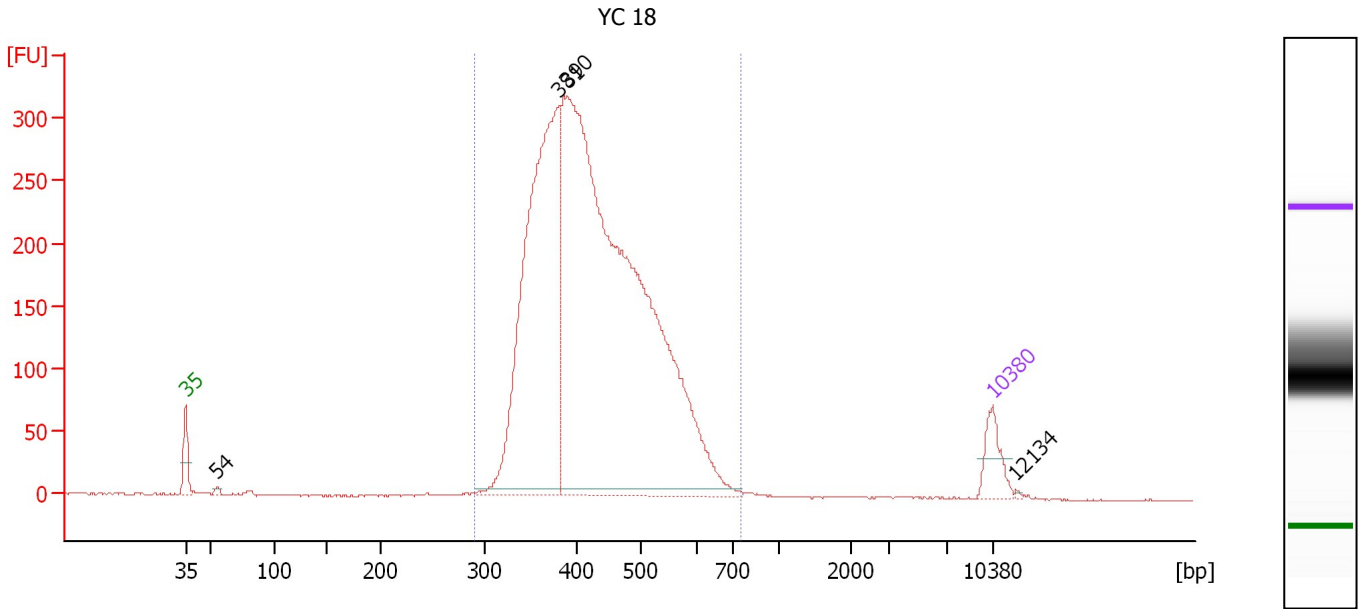
**Region table for sample 7 : UC Haskel (submitted 4/22)**

From [bp]	Molarity [pmol/l]	Average Size [bp]	Conc. [pg/μl]	To [bp]	Corr. Area	% of Total	Size distribution in CV [%]	Color
240	631.4	349	142.09	561	100.9	26	14.0	Blue

Assay Class: High Sensitivity DNA Assay  
 Data Path: C:\...ents and Settings\Bioanalyzer\2012-04-25\2012-04-25\_001.xad

Created: 4/25/2012 9:17:39 AM  
 Modified: 4/25/2012 9:59:58 AM

**Electropherogram Summary Continued ...**



**Overall Results for sample 8 : YC 18**

Number of peaks found: 4                      Corr. Area 1: 4,543.7  
 Noise: 0.5

**Peak table for sample 8 : YC 18**

Peak	Size [bp]	Conc. [pg/μl]	Molarity [pmol/l]	Observations
1	35	125.00	5,411.3	Lower Marker
2	54	9.82	273.5	
3	381	1,523.51	6,056.4	
4	390	3,282.83	12,739.8	
5	10,380	75.00	10.9	Upper Marker
6	12,134	0.00	0.0	

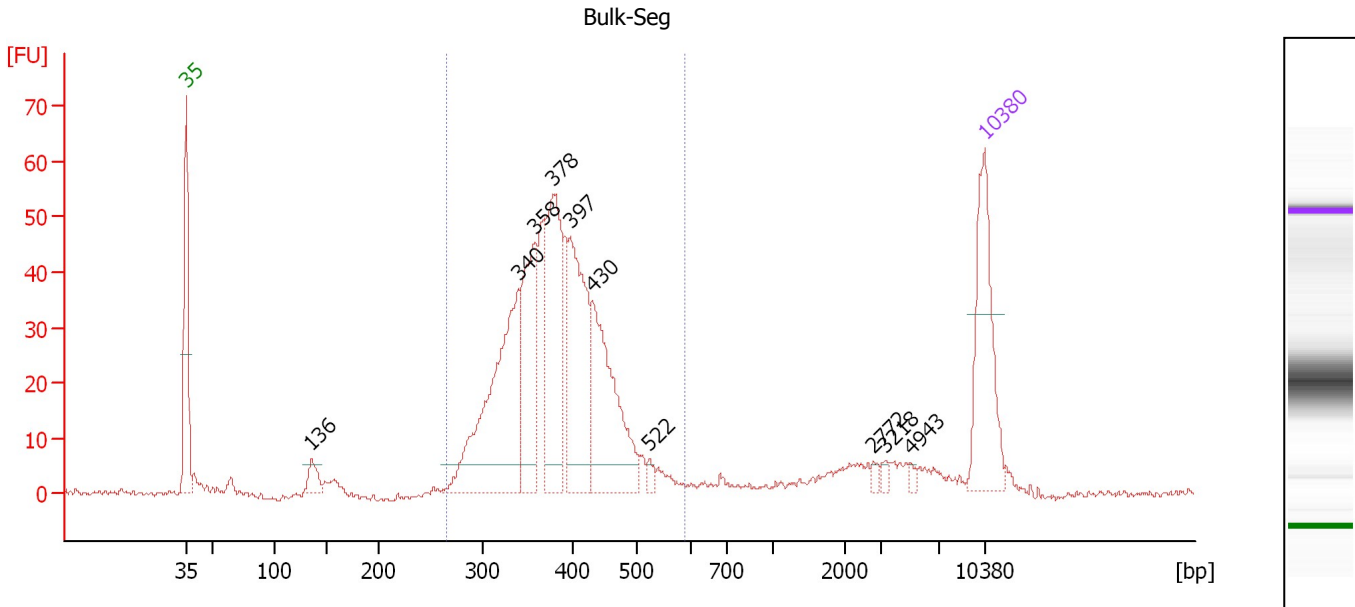
**Region table for sample 8 : YC 18**

From [bp]	Molarity [pmol/l]	Average Size [bp]	Conc. [pg/μl]	To [bp]	Corr. Area	% of Total	Size distribution in CV [%]	Color
291	17,001.8	432	4,670.00	765	4,543.7	99	17.5	Blue

Assay Class: High Sensitivity DNA Assay  
 Data Path: C:\...ents and Settings\Bioanalyzer\2012-04-25\2012-04-25\_001.xad

Created: 4/25/2012 9:17:39 AM  
 Modified: 4/25/2012 9:59:58 AM

**Electropherogram Summary Continued ...**



**Overall Results for sample 9 : Bulk-Seg**

Number of peaks found: 10      Corr. Area 1: 660.1  
 Noise: 0.5

**Peak table for sample 9 : Bulk-Seg**

Peak	Size [bp]	Conc. [pg/μl]	Molarity [pmol/l]	Observations
1	35	125.00	5,411.3	Lower Marker
2	136	18.22	203.6	
3	340	195.87	872.6	
4	358	112.40	476.1	
5	378	146.65	587.5	
6	397	133.58	509.9	
7	430	127.91	451.0	
8	522	5.45	15.8	
9	2,772	3.34	1.8	
10	3,218	3.03	1.4	
11	4,943	2.80	0.9	
12	10,380	75.00	10.9	Upper Marker

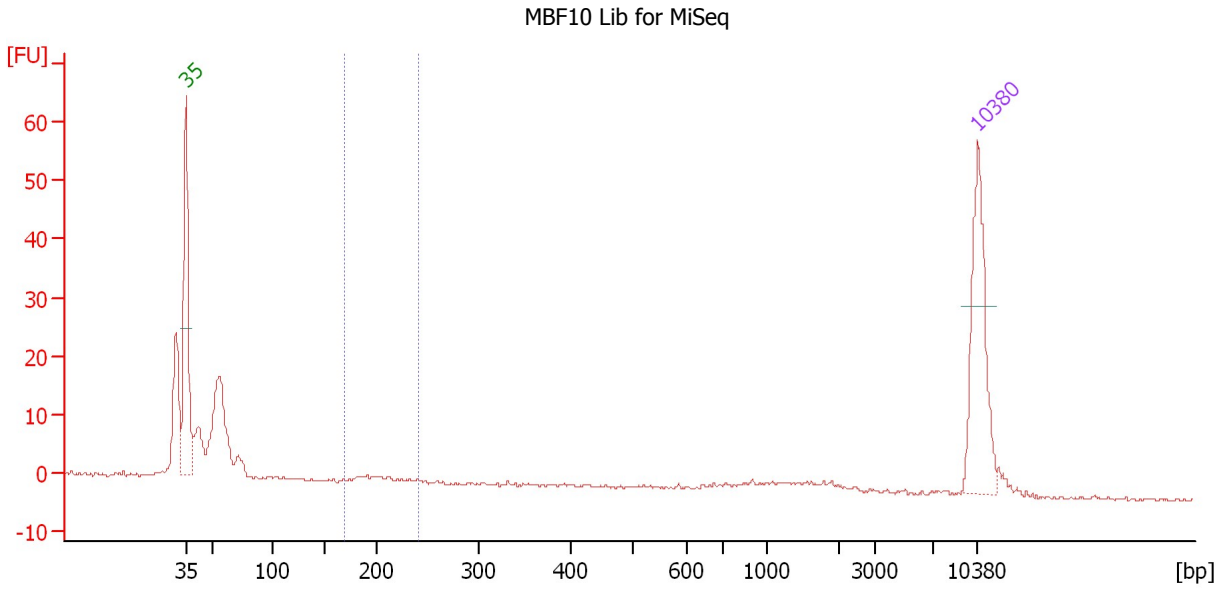
**Region table for sample 9 : Bulk-Seg**

From [bp]	Molarity [pmol/l]	Average Size [bp]	Conc. [pg/μl]	To [bp]	Corr. Area	% of Total	Size distribution in CV [%]	Color
266	3,280.9	384	811.34	588	660.1	87	14.3	Blue

Assay Class: High Sensitivity DNA Assay  
 Data Path: C:\...ents and Settings\Bioanalyzer\2012-04-25\2012-04-25\_001.xad

Created: 4/25/2012 9:17:39 AM  
 Modified: 4/25/2012 9:59:58 AM

**Electropherogram Summary Continued ...**



**Setpoint Deviations for sample 10 : MBF10 Lib for MiSeq**

Height Threshold [FU] : 30

**Overall Results for sample 10 : MBF10 Lib for MiSeq**

Number of peaks found: 0                      Corr. Area 1: 6.4  
 Noise: 0.2

**Peak table for sample 10 : MBF10 Lib for MiSeq**

Peak	Size [bp]	Conc. [pg/μl]	Molarity [pmol/l]	Observations
1	35	125.00	5,411.3	Lower Marker
2	10,380	75.00	10.9	Upper Marker

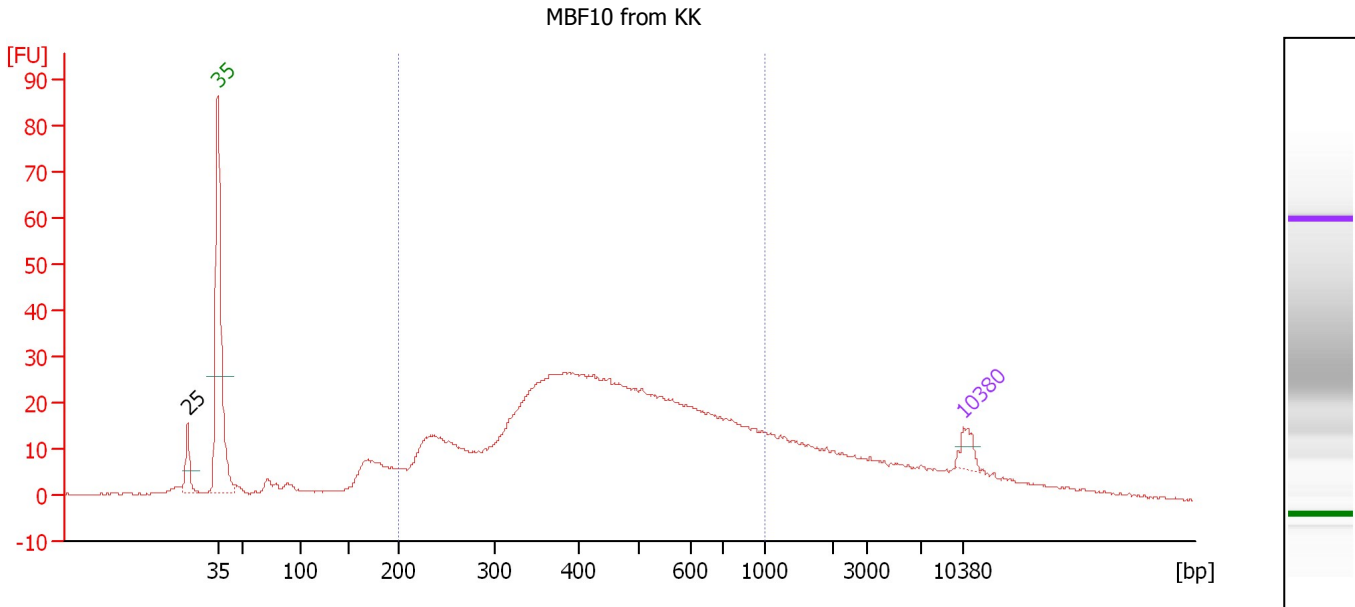
**Region table for sample 10 : MBF10 Lib for MiSeq**

From [bp]	Molarity [pmol/l]	Average Size [bp]	Conc. [pg/μl]	To [bp]	Corr. Area	% of Total	Size distribution in CV [%]	Color
170	85.7	203	11.40	240	6.4	4	8.6	Blue

Assay Class: High Sensitivity DNA Assay  
 Data Path: C:\...ents and Settings\Bioanalyzer\2012-04-25\2012-04-25\_001.xad

Created: 4/25/2012 9:17:39 AM  
 Modified: 4/25/2012 9:59:58 AM

**Electropherogram Summary Continued ...**



**Overall Results for sample 11 : MBF10 from KK**

Number of peaks found: 1                      Corr. Area 1: 779.6  
 Noise: 0.2

**Peak table for sample 11 : MBF10 from KK**

Peak	Size [bp]	Conc. [pg/μl]	Molarity [pmol/l]	Observations
1	25	0.00	0.0	
2	35	125.00	5,411.3	Lower Marker
3	10,380	75.00	10.9	Upper Marker

**Region table for sample 11 : MBF10 from KK**

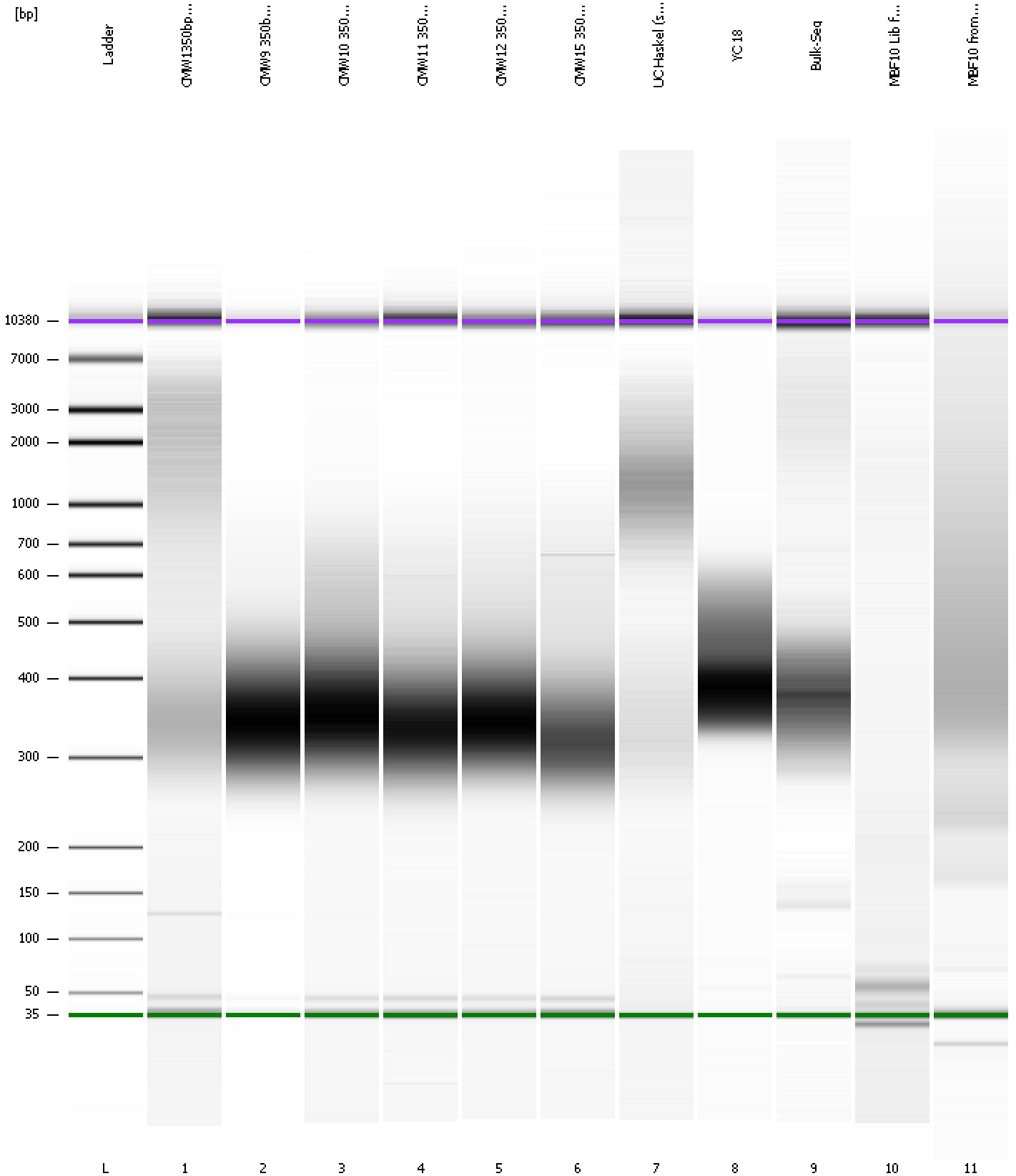
From [bp]	Molarity [pmol/l]	Average Size [bp]	Conc. [pg/μl]	To [bp]	Corr. Area	% of Total	Size distribution in CV [%]	Color
200	29,394.0	467	7,522.46	1,000	779.6	72	37.0	Blue



Assay Class: High Sensitivity DNA Assay  
Data Path: C:\...ents and Settings\Bioanalyzer\2012-04-25\2012-04-25\_001.xad

Created: 4/25/2012 9:17:39 AM  
Modified: 4/25/2012 9:59:58 AM

**Gel Image**



Assay Class: High Sensitivity DNA Assay  
 Data Path: C:\...ents and Settings\Bioanalyzer\2012-04-25\2012-04-25\_001.xad

Created: 4/25/2012 9:17:39 AM  
 Modified: 4/25/2012 9:59:58 AM

**Run Logbook**

Description	Number	Source	Category	Sub Category	Time	Time Zone	User	Host
Run ended on port 1 (Number of wells acquired: 12)		Instrument	Run		4/25/2012 9:58:58 AM	(GMT --07:00) Pacific Standard Time	UC Davis	D8XSMGH1
Run started on port 1 (File: C:\Documents and Settings\Bioanalyzer\2012-04-25\2012-04-25_001.xad)		Instrument	Run		4/25/2012 9:17:45 AM	(GMT --07:00) Pacific Standard Time	UC Davis	D8XSMGH1
Product Number : G2938B		Instrument	Run		4/25/2012 9:17:45 AM	(GMT --07:00) Pacific Standard Time	UC Davis	D8XSMGH1
Name :		Instrument	Run		4/25/2012 9:17:45 AM	(GMT --07:00) Pacific Standard Time	UC Davis	D8XSMGH1
Vendor : Agilent Technologies		Instrument	Run		4/25/2012 9:17:45 AM	(GMT --07:00) Pacific Standard Time	UC Davis	D8XSMGH1
Serial# : DE13701086		Instrument	Run		4/25/2012 9:17:45 AM	(GMT --07:00) Pacific Standard Time	UC Davis	D8XSMGH1
Firmware : C.01.069		Instrument	Run		4/25/2012 9:17:45 AM	(GMT --07:00) Pacific Standard Time	UC Davis	D8XSMGH1
Cartridge : Electrode		Instrument	Run		4/25/2012 9:17:45 AM	(GMT --07:00) Pacific Standard Time	UC Davis	D8XSMGH1