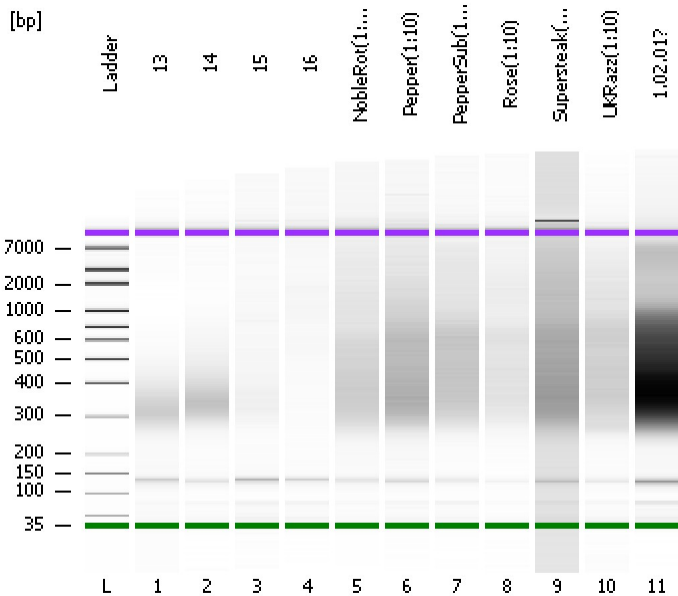


Assay Class: High Sensitivity DNA Assay  
Data Path: C:\...ents and Settings\Bioanalyzer\2012-04-25\2012-04-25\_002.xad

Created: 4/25/2012 10:15:24 AM  
Modified: 4/25/2012 11:00:00 AM

### Electrophoresis File Run Summary



#### Instrument Information:

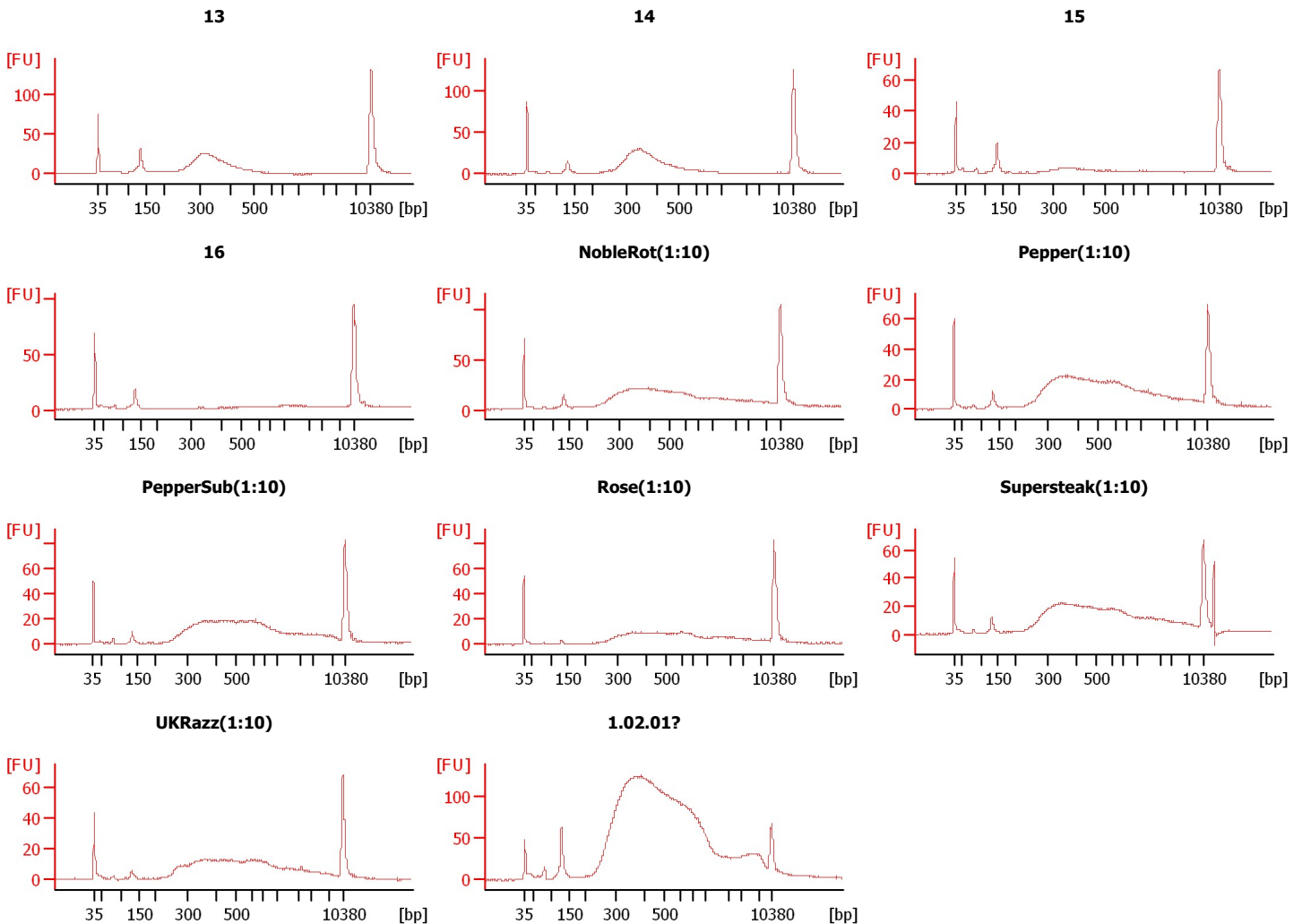
Instrument Name: DE13701086      Firmware: C.01.069  
Serial#: DE13701086      Type: G2938B

#### Assay Information:

Assay Origin Path: C:\Program Files\Agilent\2100 bioanalyzer\2100 expert\assays\dsDNA\High Sensitivity DNA.xsy  
Assay Class: High Sensitivity DNA Assay  
Version: 1.03  
Assay Comments: Copyright © 2003-2010 Agilent Technologies

#### Chip Information:

Chip Lot #:      Reagent Kit Lot #:      Chip Comments:



Assay Class: High Sensitivity DNA Assay  
 Data Path: C:\...ents and Settings\Bioanalyzer\2012-04-25\2012-04-25\_002.xad

Created: 4/25/2012 10:15:24 AM  
 Modified: 4/25/2012 11:00:00 AM

**Electrophoresis File Run Summary (Chip Summary)**

Sample Name	Sample Comment	Rest. Digest	Status	Observation	Result Label	Result Color
13		<input type="checkbox"/>	✓			
14		<input type="checkbox"/>	✓			
15		<input type="checkbox"/>	✓			
16		<input type="checkbox"/>	✓			
NobleRot(1:10)		<input type="checkbox"/>	✓			
Pepper(1:10)		<input type="checkbox"/>	✓			
PepperSub(1:10)		<input type="checkbox"/>	✓			
Rose(1:10)		<input type="checkbox"/>	✓			
Supersteak(1:10)		<input type="checkbox"/>	✓			
UKRazz(1:10)		<input type="checkbox"/>	✓			
1.02.01?		<input type="checkbox"/>	✓			
Ladder		<input type="checkbox"/>	✓			

**Chip Lot #**

**Reagent Kit Lot #**

**Chip Comments :**

Assay Class: High Sensitivity DNA Assay  
Data Path: C:\...ents and Settings\Bioanalyzer\2012-04-25\2012-04-25\_002.xad

Created: 4/25/2012 10:15:24 AM  
Modified: 4/25/2012 11:00:00 AM

**Electrophoresis Assay Details**

**General Analysis Settings**

Number of Available Sample and Ladder Wells (Max.) : 12  
Minimum Visible Range [s] : 32  
Maximum Visible Range [s] : 138  
Start Analysis Time Range [s] : 33  
End Analysis Time Range [s] : 137.5  
Ladder Concentration [pg/μl] : 1950  
Uses Standard Area for Ladder Fragments  
Lower Marker Concentration [pg/μl] : 125  
Upper Marker Concentration [pg/μl] : 75  
Used Upper Marker for Quantitation  
Standard Curve Fit is Point to Point  
Show Data Aligned to Lower and Upper Marker

**Integrator Settings**

Integration Start Time [s] : 33.05  
Integration End Time [s] : 137  
Slope Threshold : 0.8  
Height Threshold [FU] : 5  
Area Threshold : 0.1  
Width Threshold [s] : 0.6  
Baseline Plateau [s] : 0.5

**Filter Settings**

Filter Width [s] : 0.5  
Polynomial Order : 4

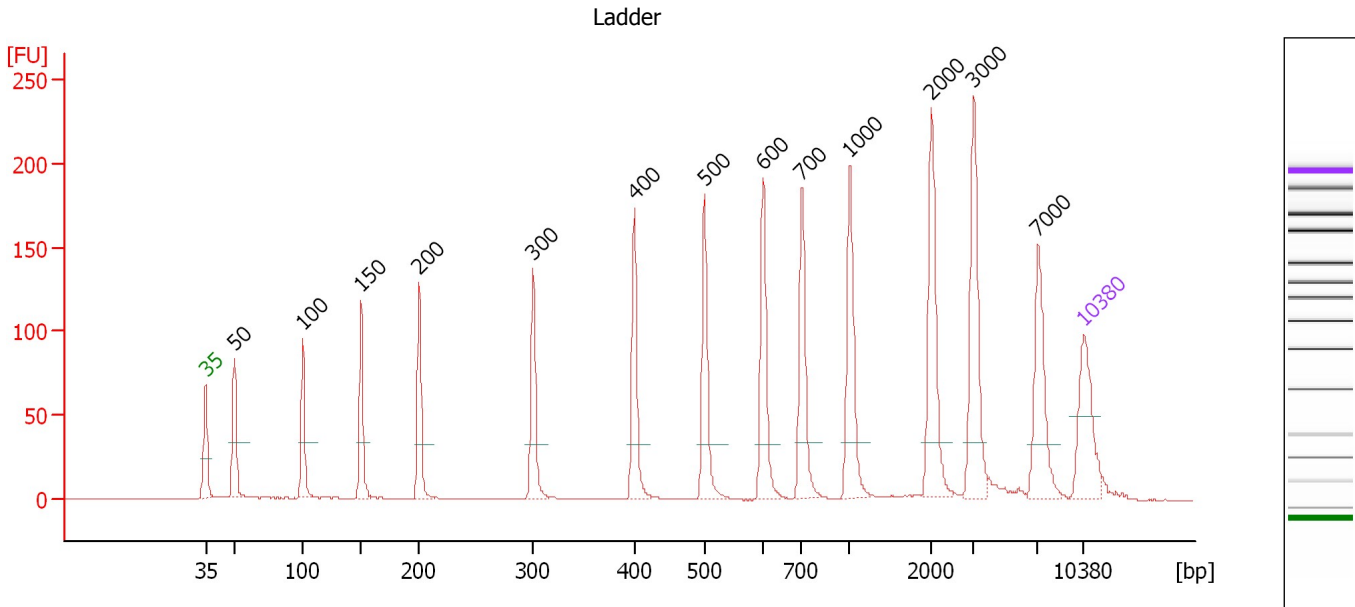
**Ladder**

Ladder Peak	Size	Area
1	35	160
2	50	210
3	100	208
4	150	221
5	200	242
6	300	270
7	400	305
8	500	306
9	600	336
10	700	321
11	1000	366
12	2000	413
13	3000	411
14	7000	400
15	10380	214

Assay Class: High Sensitivity DNA Assay  
 Data Path: C:\...ents and Settings\Bioanalyzer\2012-04-25\2012-04-25\_002.xad

Created: 4/25/2012 10:15:24 AM  
 Modified: 4/25/2012 11:00:00 AM

**Electropherogram Summary**



**Overall Results for Ladder**

Noise: 0.1

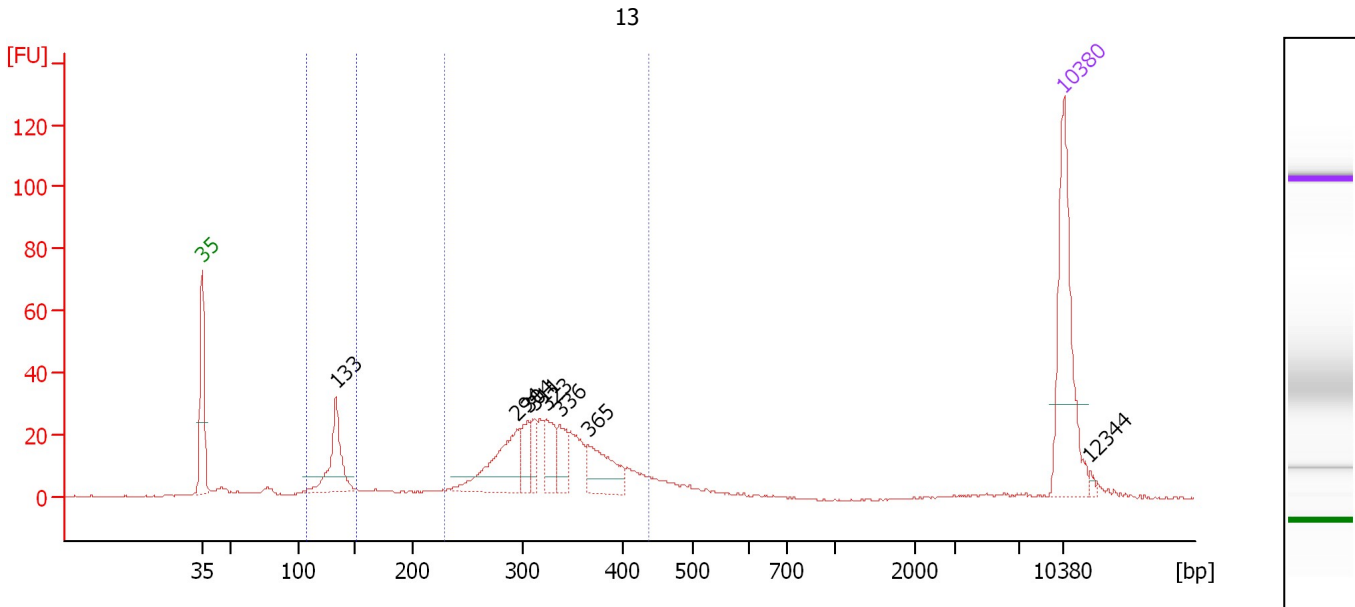
**Peak table for Ladder**

Peak	Size [bp]	Conc. [pg/μl]	Molarity [pmol/l]	Observations
1	35	125.00	5,411.3	Lower Marker
2	50	150.00	4,545.5	Ladder Peak
3	100	150.00	2,272.7	Ladder Peak
4	150	150.00	1,515.2	Ladder Peak
5	200	150.00	1,136.4	Ladder Peak
6	300	150.00	757.6	Ladder Peak
7	400	150.00	568.2	Ladder Peak
8	500	150.00	454.5	Ladder Peak
9	600	150.00	378.8	Ladder Peak
10	700	150.00	324.7	Ladder Peak
11	1,000	150.00	227.3	Ladder Peak
12	2,000	150.00	113.6	Ladder Peak
13	3,000	150.00	75.8	Ladder Peak
14	7,000	150.00	32.5	Ladder Peak
15	10,380	75.00	10.9	Upper Marker

Assay Class: High Sensitivity DNA Assay  
 Data Path: C:\...ents and Settings\Bioanalyzer\2012-04-25\2012-04-25\_002.xad

Created: 4/25/2012 10:15:24 AM  
 Modified: 4/25/2012 11:00:00 AM

**Electropherogram Summary Continued ...**



**Overall Results for sample 1 : 13**

Number of peaks found: 8                      Corr. Area 1: 355.0  
 Noise: 0.2                                      Corr. Area 2: 70.9

**Peak table for sample 1 : 13**

Peak	Size [bp]	Conc. [pg/μl]	Molarity [pmol/l]	Observations
1	35	125.00	5,411.3	Lower Marker
2	133	60.21	685.1	
3	294	64.84	333.9	
4	304	21.71	108.1	
5	311	16.49	80.3	
6	323	29.66	139.4	
7	336	23.22	104.5	
8	365	42.30	175.4	
9	10,380	75.00	10.9	Upper Marker
10	12,344	0.00	0.0	

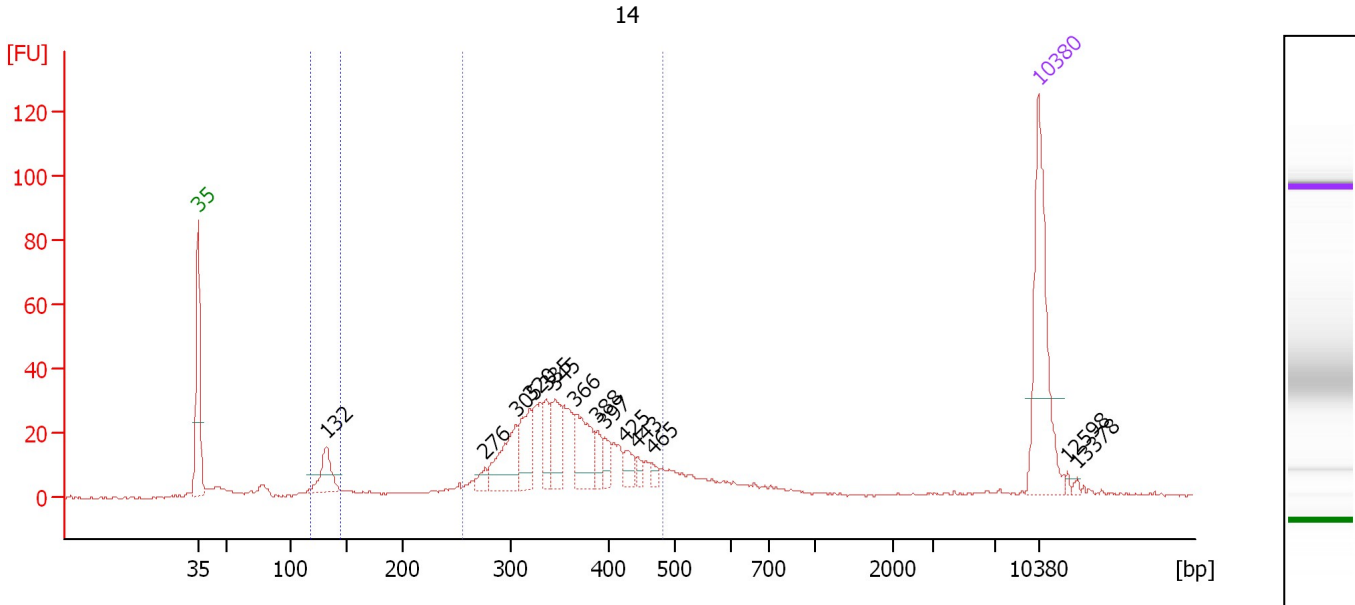
**Region table for sample 1 : 13**

From [bp]	Molarity [pmol/l]	Average Size [bp]	Conc. [pg/μl]	To [bp]	Corr. Area	% of Total	Size distribution in CV [%]	Color
108	852.4	132	74.08	150	70.9	13	6.3	Blue
229	1,353.9	329	287.42	438	355.0	67	13.6	Dark Blue

Assay Class: High Sensitivity DNA Assay  
 Data Path: C:\...ents and Settings\Bioanalyzer\2012-04-25\2012-04-25\_002.xad

Created: 4/25/2012 10:15:24 AM  
 Modified: 4/25/2012 11:00:00 AM

**Electropherogram Summary Continued ...**



**Overall Results for sample 2 : 14**

Number of peaks found: 14                      Corr. Area 1: 425.1  
 Noise: 0.3    Corr. Area 2: 36.4

**Peak table for sample 2 : 14**

Peak	Size [bp]	Conc. [pg/μl]	Molarity [pmol/l]	Observations
1	35	125.00	5,411.3	Lower Marker
2	132	32.21	370.4	
3	276	9.17	50.4	
4	305	47.00	233.8	
5	320	35.21	167.0	
6	335	20.02	90.4	
7	345	31.18	137.0	
8	366	38.88	160.8	
9	388	12.58	49.1	
10	397	10.81	41.3	
11	425	11.10	39.6	
12	443	5.29	18.1	
13	465	5.46	17.8	
14	10,380	75.00	10.9	Upper Marker
15	12,598	0.00	0.0	
16	13,378	0.00	0.0	

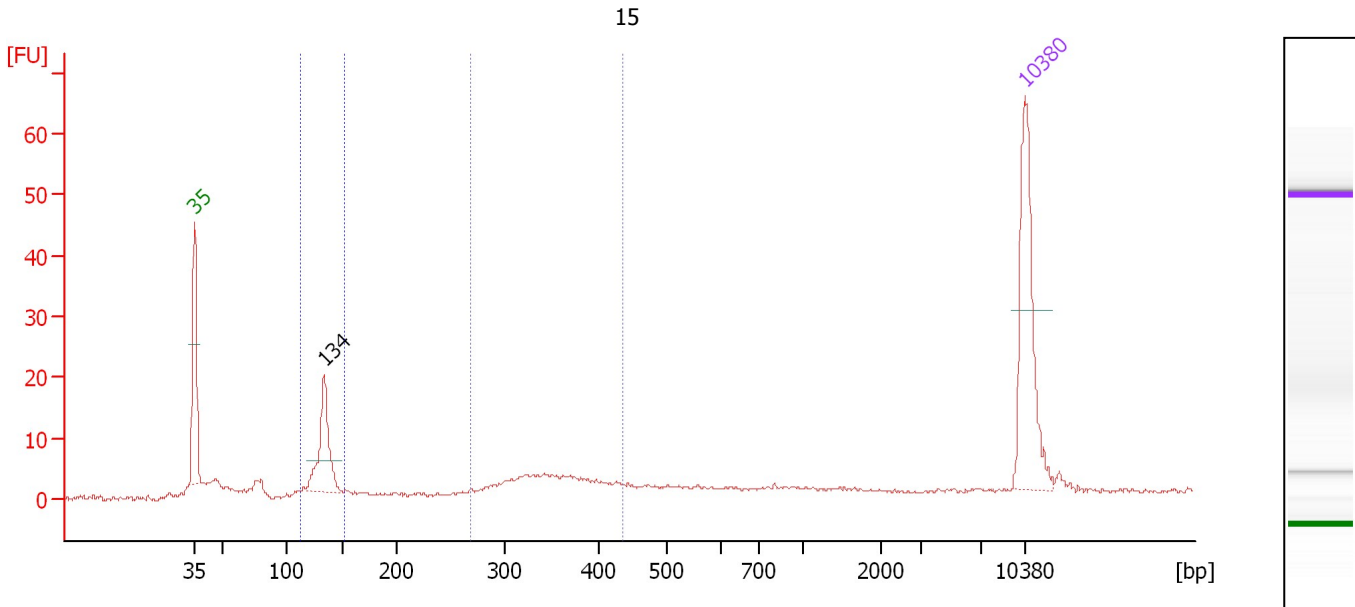
**Region table for sample 2 : 14**

From [bp]	Molarity [pmol/l]	Average Size [bp]	Conc. [pg/μl]	To [bp]	Corr. Area	% of Total	Size distribution in CV [%]	Color
118	480.9	131	41.59	145	36.4	6	4.4	Blue
255	1,600.7	356	366.64	481	425.1	69	14.2	Dark Blue

Assay Class: High Sensitivity DNA Assay  
 Data Path: C:\...ents and Settings\Bioanalyzer\2012-04-25\2012-04-25\_002.xad

Created: 4/25/2012 10:15:24 AM  
 Modified: 4/25/2012 11:00:00 AM

**Electropherogram Summary Continued ...**



**Overall Results for sample 3 : 15**

Number of peaks found: 1                      Corr. Area 1: 38.3  
 Noise: 0.2                                      Corr. Area 2: 39.3

**Peak table for sample 3 : 15**

Peak	Size [bp]	Conc. [pg/μl]	Molarity [pmol/l]	Observations
1	35	125.00	5,411.3	Lower Marker
2	134	70.81	800.0	
3	10,380	75.00	10.9	Upper Marker

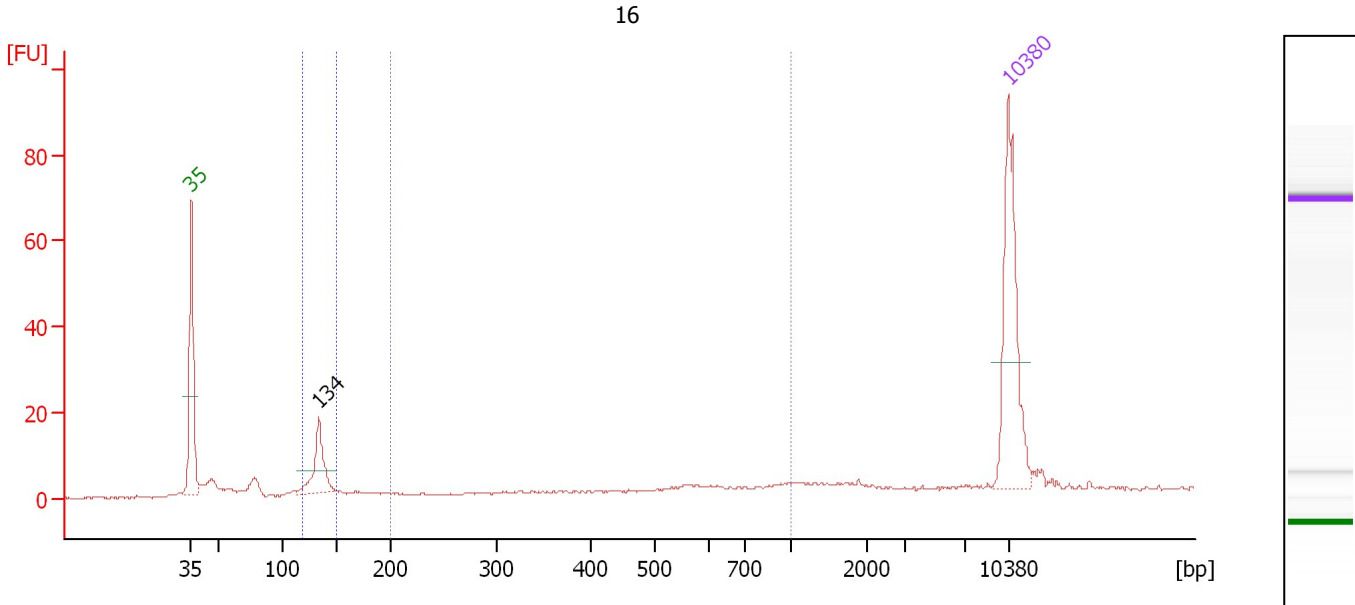
**Region table for sample 3 : 15**

From [bp]	Molarity [pmol/l]	Average Size [bp]	Conc. [pg/μl]	To [bp]	Corr. Area	% of Total	Size distribution in CV [%]	Color
113	909.6	133	80.00	153	39.3	32	5.0	Blue
269	260.4	349	59.19	435	38.3	31	11.2	Dark Blue

Assay Class: High Sensitivity DNA Assay  
 Data Path: C:\...ents and Settings\Bioanalyzer\2012-04-25\2012-04-25\_002.xad

Created: 4/25/2012 10:15:24 AM  
 Modified: 4/25/2012 11:00:00 AM

**Electropherogram Summary Continued ...**



**Overall Results for sample 4 : 16**

Number of peaks found: 1                      Corr. Area 1: 30.4  
 Noise: 0.2                                      Corr. Area 2: 34.3

**Peak table for sample 4 : 16**

Peak	Size [bp]	Conc. [pg/μl]	Molarity [pmol/l]	Observations
1	35	125.00	5,411.3	Lower Marker
2	134	46.94	530.5	
3	10,380	75.00	10.9	Upper Marker

**Region table for sample 4 : 16**

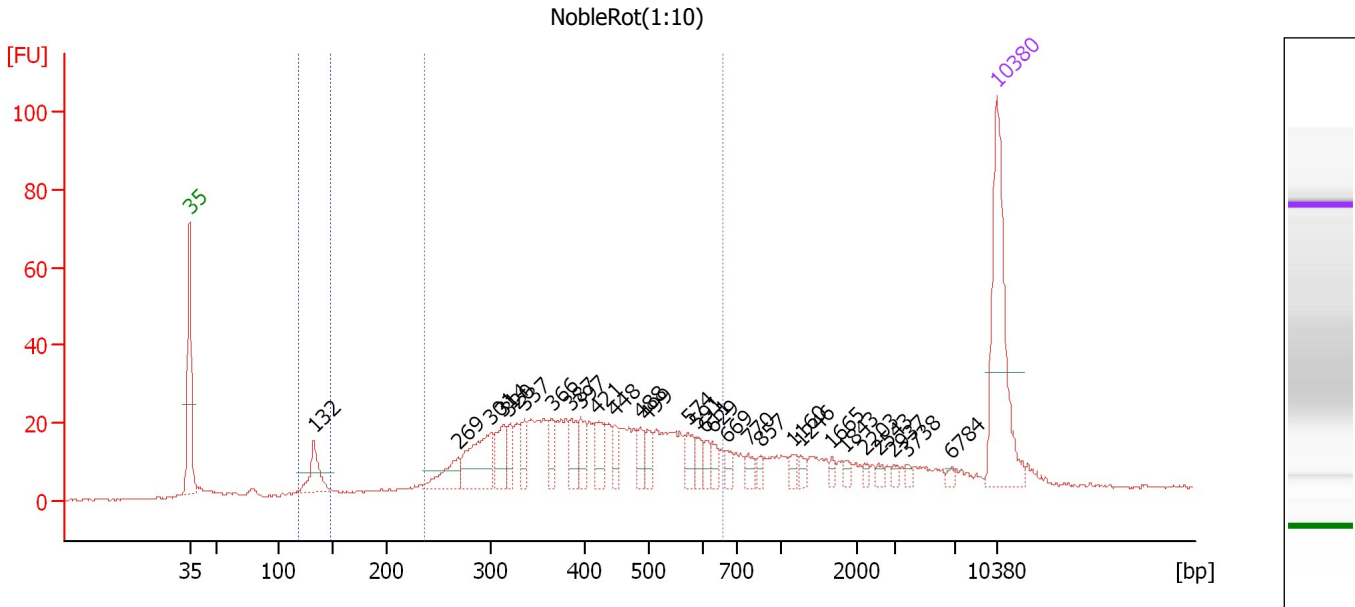
From [bp]	Molarity [pmol/l]	Average Size [bp]	Conc. [pg/μl]	To [bp]	Corr. Area	% of Total	Size distribution in CV [%]	Color
120	571.4	134	50.62	151	34.3	25	4.5	Blue
200	103.9	570	31.36	1,000	30.4	22	35.8	Dark Blue



Assay Class: High Sensitivity DNA Assay  
 Data Path: C:\...ents and Settings\Bioanalyzer\2012-04-25\2012-04-25\_002.xad

Created: 4/25/2012 10:15:24 AM  
 Modified: 4/25/2012 11:00:00 AM

**Electropherogram Summary Continued ...**



**Overall Results for sample 5 : NobleRot(1:10)**

Number of peaks found: 29                      Corr. Area 1: 532.8  
 Noise: 0.3                                      Corr. Area 2: 30.2

**Peak table for sample 5 : NobleRot(1:10)**

Peak	Size [bp]	Conc. [pg/μl]	Molarity [pmol/l]	Observations
1	35	125.00	5,411.3	Lower Marker
2	132	31.09	355.5	
3	269	24.61	138.5	
4	301	49.19	247.7	
5	314	24.43	118.1	
6	320	14.52	68.7	
7	337	15.75	70.8	
8	366	14.07	58.2	
9	387	16.31	63.9	
10	397	14.99	57.2	
11	421	20.68	74.4	
12	448	11.33	38.4	
13	488	10.38	32.2	
14	499	11.56	35.1	
15	574	13.38	35.3	
16	591	7.57	19.4	
17	611	8.61	21.4	
18	629	6.50	15.7	
19	669	6.37	14.4	
20	770	7.02	13.8	
21	857	4.67	8.3	
22	1,160	5.22	6.8	
23	1,246	4.30	5.2	
24	1,665	3.10	2.8	
25	1,843	3.93	3.2	
26	2,203	2.63	1.8	

Assay Class: High Sensitivity DNA Assay  
 Data Path: C:\...ents and Settings\Bioanalyzer\2012-04-25\2012-04-25\_002.xad



Created: 4/25/2012 10:15:24 AM  
 Modified: 4/25/2012 11:00:00 AM

### Electropherogram Summary Continued ...

#### ... Peak table for sample 5 : NobleRot(1:10)

Peak	Size [bp]	Conc. [pg/μl]	Molarity [pmol/l]	Observations
27	2,543	2.71	1.6	
28	2,937	2.68	1.4	
29	3,738	2.39	1.0	
30	6,784	2.40	0.5	
31	10,380	75.00	10.9	Upper Marker

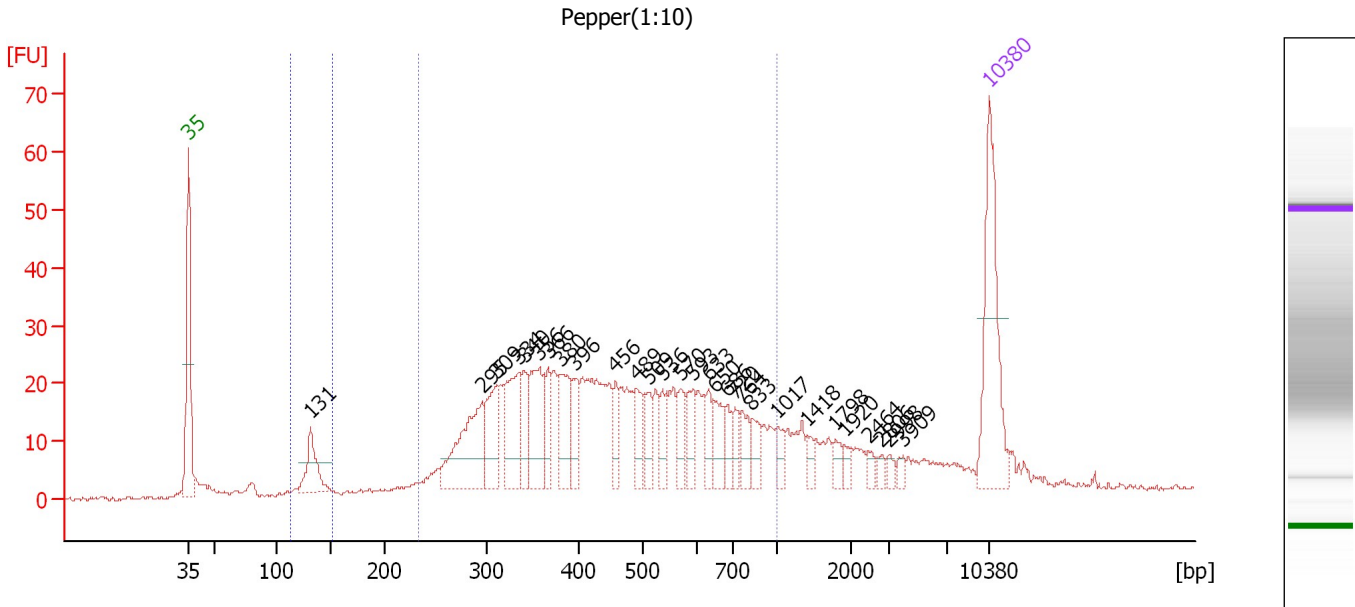
#### Region table for sample 5 : NobleRot(1:10)

From [bp]	Molarity [pmol/l]	Average Size [bp]	Conc. [pg/μl]	To [bp]	Corr. Area	% of Total	Size distribution in CV [%]	Color
119	440.0	133	38.71	148	30.2	4	4.7	
237	2,012.4	416	503.71	658	532.8	67	25.2	

Assay Class: High Sensitivity DNA Assay  
 Data Path: C:\...ents and Settings\Bioanalyzer\2012-04-25\2012-04-25\_002.xad

Created: 4/25/2012 10:15:24 AM  
 Modified: 4/25/2012 11:00:00 AM

**Electropherogram Summary Continued ...**



**Overall Results for sample 6 : Pepper(1:10)**

Number of peaks found: 29      Corr. Area 1: 654.2  
 Noise: 0.4      Corr. Area 2: 28.4

**Peak table for sample 6 : Pepper(1:10)**

Peak	Size [bp]	Conc. [pg/μl]	Molarity [pmol/l]	Observations
1	35	125.00	5,411.3	Lower Marker
2	131	42.08	485.2	
3	295	83.97	430.7	
4	309	41.97	205.6	
5	334	60.87	276.5	
6	340	25.65	114.3	
7	356	53.61	228.2	
8	366	26.08	108.0	
9	380	41.99	167.3	
10	396	24.45	93.6	
11	456	18.86	62.6	
12	489	20.30	62.9	
13	509	19.19	57.1	
14	536	16.12	45.6	
15	570	19.16	50.9	
16	593	20.87	53.3	
17	633	14.46	34.6	
18	650	20.20	47.1	
19	686	13.50	29.8	
20	720	11.95	25.2	
21	764	15.06	29.9	
22	833	14.13	25.7	
23	1,017	9.00	13.4	
24	1,418	7.07	7.6	
25	1,798	7.50	6.3	
26	1,920	4.89	3.9	

Assay Class: High Sensitivity DNA Assay  
 Data Path: C:\...ents and Settings\Bioanalyzer\2012-04-25\2012-04-25\_002.xad



Created: 4/25/2012 10:15:24 AM  
 Modified: 4/25/2012 11:00:00 AM

### Electropherogram Summary Continued ...

#### ... Peak table for sample 6 : Pepper(1:10)

Peak	Size [bp]	Conc. [pg/μl]	Molarity [pmol/l]	Observations
27	2,464	5.15	3.2	
28	2,806	4.12	2.2	
29	2,998	4.35	2.2	
30	3,909	4.28	1.7	
31	10,380	75.00	10.9	Upper Marker

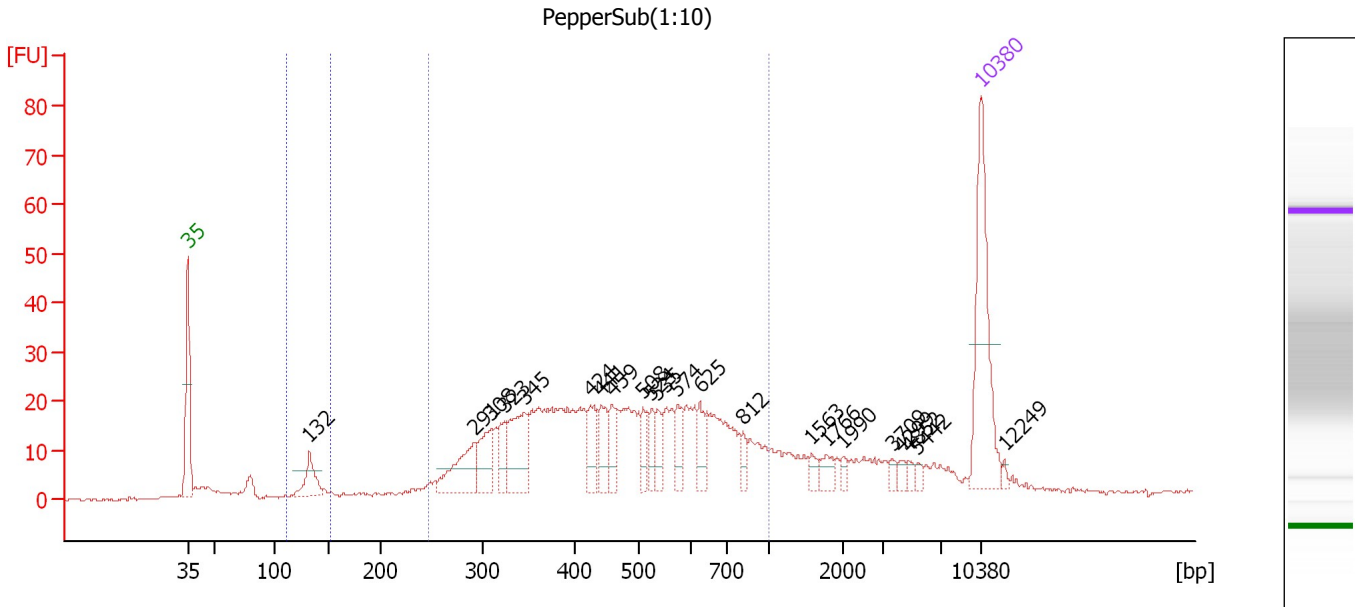
#### Region table for sample 6 : Pepper(1:10)

From [bp]	Molarity [pmol/l]	Average Size [bp]	Conc. [pg/μl]	To [bp]	Corr. Area	% of Total	Size distribution in CV [%]	Color
113	634.1	133	55.44	152	28.4	3	5.9	
234	3,443.6	473	922.61	1,000	654.2	76	35.1	

Assay Class: High Sensitivity DNA Assay  
 Data Path: C:\...ents and Settings\Bioanalyzer\2012-04-25\2012-04-25\_002.xad

Created: 4/25/2012 10:15:24 AM  
 Modified: 4/25/2012 11:00:00 AM

**Electropherogram Summary Continued ...**



**Overall Results for sample 7 : PepperSub(1:10)**

Number of peaks found: 22                      Corr. Area 1: 553.6  
 Noise: 0.3    Corr. Area 2: 19.2

**Peak table for sample 7 : PepperSub(1:10)**

Peak	Size [bp]	Conc. [pg/μl]	Molarity [pmol/l]	Observations
1	35	125.00	5,411.3	Lower Marker
2	132	28.61	328.6	
3	291	47.11	245.6	
4	308	32.91	161.8	
5	323	22.31	104.7	
6	345	51.69	226.8	
7	424	24.90	88.9	
8	441	24.44	83.9	
9	459	20.51	67.7	
10	508	16.37	48.8	
11	524	14.92	43.1	
12	535	14.57	41.2	
13	574	17.69	46.7	
14	625	17.61	42.7	
15	812	9.35	17.5	
16	1,563	6.44	6.2	
17	1,766	8.57	7.4	
18	1,990	3.96	3.0	
19	3,709	4.29	1.8	
20	4,299	3.93	1.4	
21	4,852	3.34	1.0	
22	5,442	3.25	0.9	
23	10,380	75.00	10.9	Upper Marker
24	12,249	0.00	0.0	



Assay Class: High Sensitivity DNA Assay  
Data Path: C:\...ents and Settings\Bioanalyzer\2012-04-25\2012-04-25\_002.xad

Created: 4/25/2012 10:15:24 AM  
Modified: 4/25/2012 11:00:00 AM

**Electropherogram Summary Continued ...**

... Region table for sample 7 :

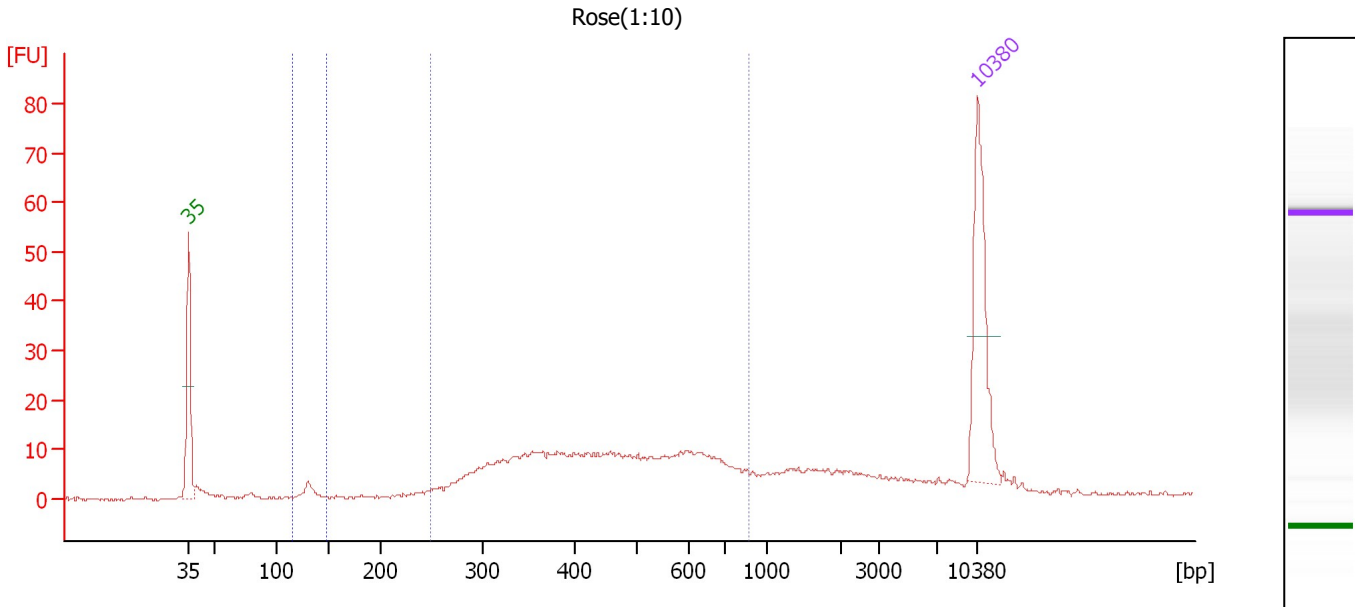
**PepperSub(1:10)**

<b>From [bp]</b>	<b>Molarity [pmol/l]</b>	<b>Average Size [bp]</b>	<b>Conc. [pg/μl]</b>	<b>To [bp]</b>	<b>Corr. Area</b>	<b>% of Total</b>	<b>Size distribution in CV [%]</b>	<b>Color</b>
111	383.0	134	33.78	153	19.2	3	5.4	
247	2,500.1	487	697.75	1,000	553.6	77	33.2	

Assay Class: High Sensitivity DNA Assay  
 Data Path: C:\...ents and Settings\Bioanalyzer\2012-04-25\2012-04-25\_002.xad

Created: 4/25/2012 10:15:24 AM  
 Modified: 4/25/2012 11:00:00 AM

**Electropherogram Summary Continued ...**



**Overall Results for sample 8 : Rose(1:10)**

Number of peaks found: 0                      Corr. Area 1: 254.9  
 Noise: 0.3                                      Corr. Area 2: 5.0

**Peak table for sample 8 : Rose(1:10)**

Peak	Size [bp]	Conc. [pg/μl]	Molarity [pmol/l]	Observations
1	35	125.00	5,411.3	Lower Marker
2	10,380	75.00	10.9	Upper Marker

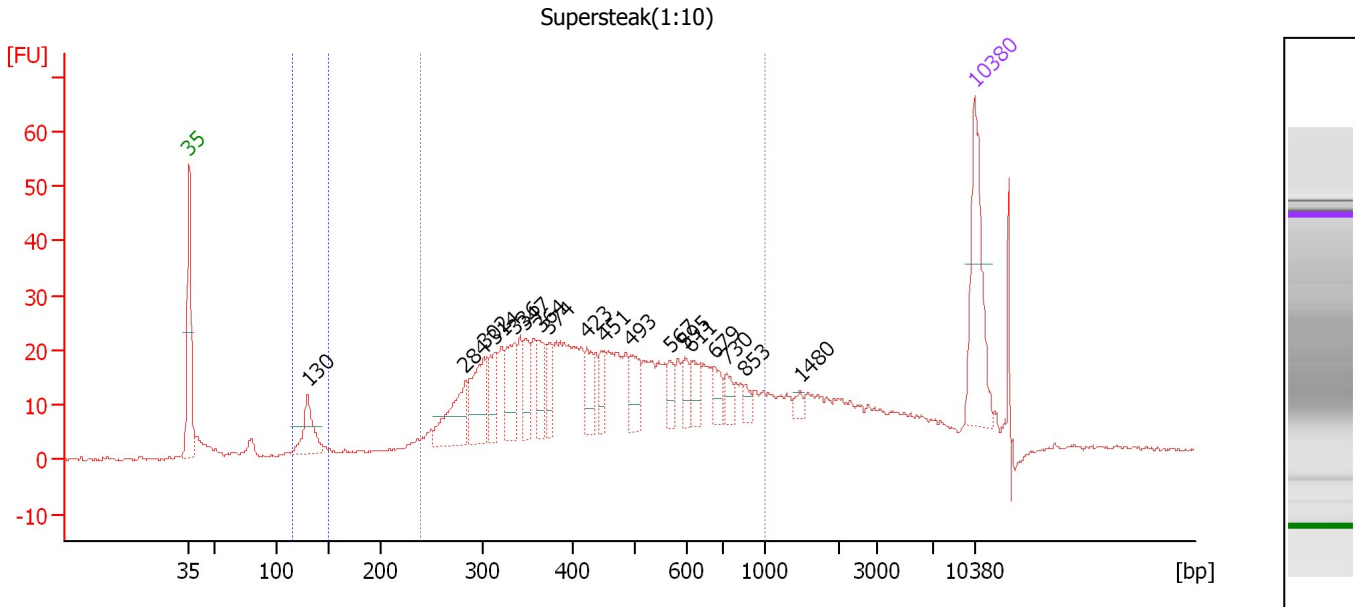
**Region table for sample 8 : Rose(1:10)**

From [bp]	Molarity [pmol/l]	Average Size [bp]	Conc. [pg/μl]	To [bp]	Corr. Area	% of Total	Size distribution in CV [%]	Color
116	103.4	132	8.99	149	5.0	1	3.7	Blue
249	1,207.9	468	331.40	870	254.9	73	29.3	Dark Blue

Assay Class: High Sensitivity DNA Assay  
 Data Path: C:\...ents and Settings\Bioanalyzer\2012-04-25\2012-04-25\_002.xad

Created: 4/25/2012 10:15:24 AM  
 Modified: 4/25/2012 11:00:00 AM

**Electropherogram Summary Continued ...**



**Overall Results for sample 9 : Supersteak(1:10)**

Number of peaks found: 18      Corr. Area 1: 644.1  
 Noise: 0.3      Corr. Area 2: 26.5

**Peak table for sample 9 : Supersteak(1:10)**

Peak	Size [bp]	Conc. [pg/μl]	Molarity [pmol/l]	Observations
1	35	125.00	5,411.3	Lower Marker
2	130	51.40	598.6	
3	284	61.06	326.2	
4	302	65.46	328.1	
5	314	38.30	184.8	
6	336	48.67	219.6	
7	347	29.36	128.2	
8	364	27.54	114.6	
9	374	26.13	105.8	
10	423	28.04	100.5	
11	451	20.65	69.4	
12	493	29.15	89.6	
13	567	15.64	41.8	
14	595	16.29	41.5	
15	611	20.62	51.1	
16	679	17.44	38.9	
17	730	14.05	29.1	
18	853	8.52	15.1	
19	1,480	6.17	6.3	
20	10,380	75.00	10.9	Upper Marker

**Region table for sample 9 : Supersteak(1:10)**

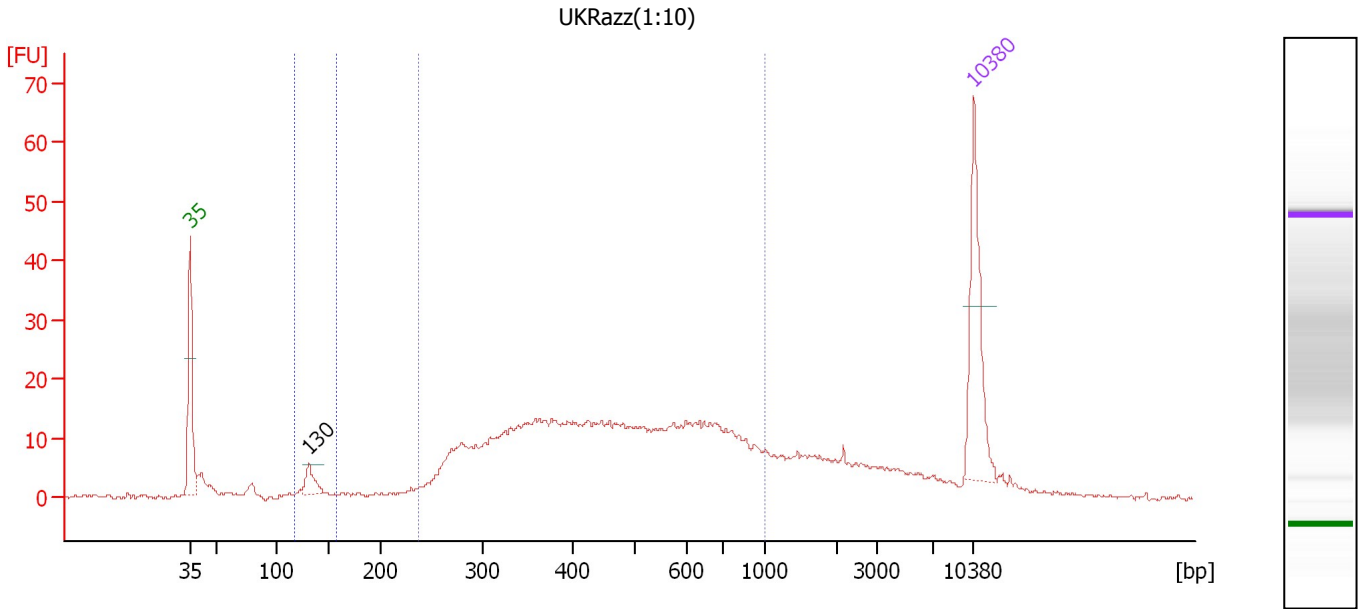
From [bp]	Molarity [pmol/l]	Average Size [bp]	Conc. [pg/μl]	To [bp]	Corr. Area	% of Total	Size distribution in CV [%]	Color
116	750.2	132	65.39	151	26.5	3	5.5	Blue
239	4,284.5	473	1,148.06	1,000	644.1	73	35.0	Purple



Assay Class: High Sensitivity DNA Assay  
 Data Path: C:\...ents and Settings\Bioanalyzer\2012-04-25\2012-04-25\_002.xad

Created: 4/25/2012 10:15:24 AM  
 Modified: 4/25/2012 11:00:00 AM

**Electropherogram Summary Continued ...**



**Overall Results for sample 10 : UKRazz(1:10)**

Number of peaks found: 1                      Corr. Area 1: 423.3  
 Noise: 0.4                                      Corr. Area 2: 12.8

**Peak table for sample 10 : UKRazz(1:10)**

Peak	Size [bp]	Conc. [pg/μl]	Molarity [pmol/l]	Observations
1	35	125.00	5,411.3	Lower Marker
2	130	22.69	263.8	
3	10,380	75.00	10.9	Upper Marker

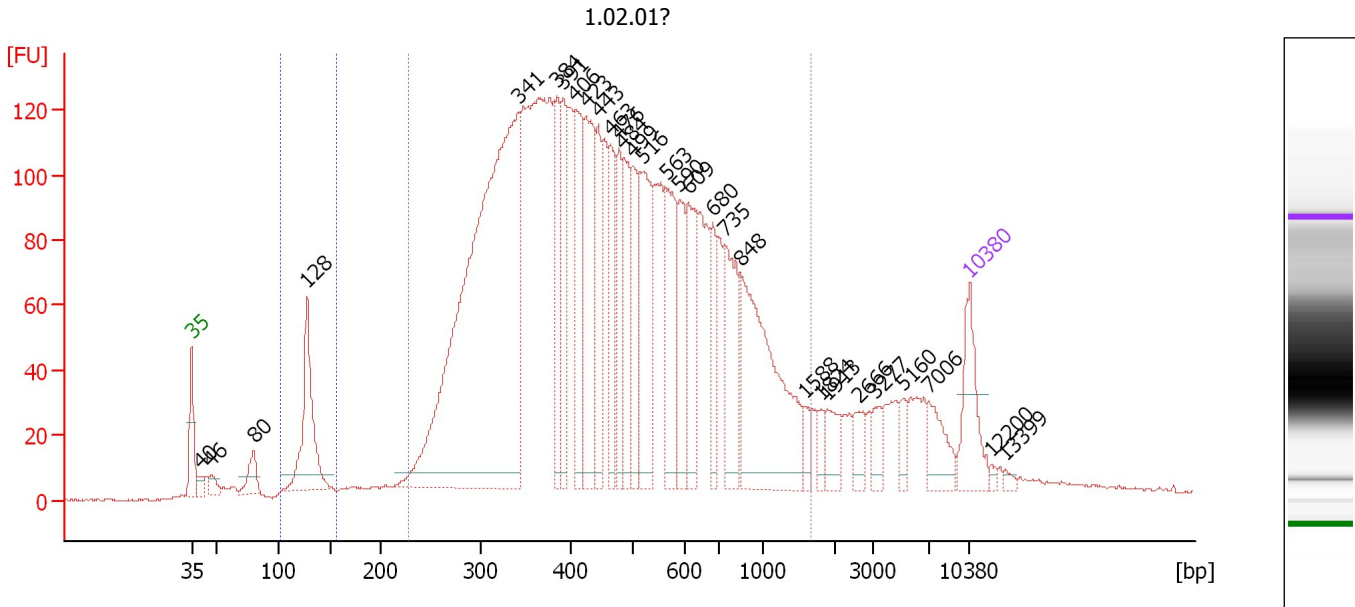
**Region table for sample 10 : UKRazz(1:10)**

From [bp]	Molarity [pmol/l]	Average Size [bp]	Conc. [pg/μl]	To [bp]	Corr. Area	% of Total	Size distribution in CV [%]	Color
117	367.9	134	32.40	158	12.8	2	5.7	Blue
237	2,834.9	487	774.18	1,000	423.3	74	35.2	Dark Blue

Assay Class: High Sensitivity DNA Assay  
 Data Path: C:\...ents and Settings\Bioanalyzer\2012-04-25\2012-04-25\_002.xad

Created: 4/25/2012 10:15:24 AM  
 Modified: 4/25/2012 11:00:00 AM

**Electropherogram Summary Continued ...**



**Overall Results for sample 11 : 1.02.01?**

Number of peaks found: 30      Corr. Area 1: 3,738.6  
 Noise: 0.4      Corr. Area 2: 133.0

**Peak table for sample 11 : 1.02.01?**

Peak	Size [bp]	Conc. [pg/μl]	Molarity [pmol/l]	Observations
1	35	125.00	5,411.3	Lower Marker
2	40	17.73	665.9	
3	46	25.91	848.0	
4	80	45.55	861.6	
5	128	209.79	2,479.8	
6	341	1,256.98	5,590.0	
7	384	137.11	540.8	
8	391	134.21	520.6	
9	406	176.27	657.5	
10	423	207.62	743.1	
11	443	117.36	401.4	
12	463	110.27	361.1	
13	476	107.27	341.2	
14	484	112.25	351.3	
15	499	116.32	353.4	
16	516	191.97	563.7	
17	563	143.40	386.2	
18	590	103.08	264.9	
19	609	129.59	322.3	
20	680	71.16	158.5	
21	735	138.44	285.4	
22	848	320.17	572.1	
23	1,588	18.41	17.6	
24	1,824	15.83	13.1	
25	1,913	36.16	28.6	
26	2,666	26.94	15.3	

Assay Class: High Sensitivity DNA Assay  
 Data Path: C:\...ents and Settings\Bioanalyzer\2012-04-25\2012-04-25\_002.xad



Created: 4/25/2012 10:15:24 AM  
 Modified: 4/25/2012 11:00:00 AM

### Electropherogram Summary Continued ...

#### ... Peak table for sample 11 : 1.02.01?

Peak	Size [bp]	Conc. [pg/μl]	Molarity [pmol/l]	Observations
27	3,277	23.62	10.9	
28	5,160	19.23	5.6	
29	7,006	48.89	10.6	
30	10,380	75.00	10.9	Upper Marker
31	12,200	0.00	0.0	
32	13,399	0.00	0.0	

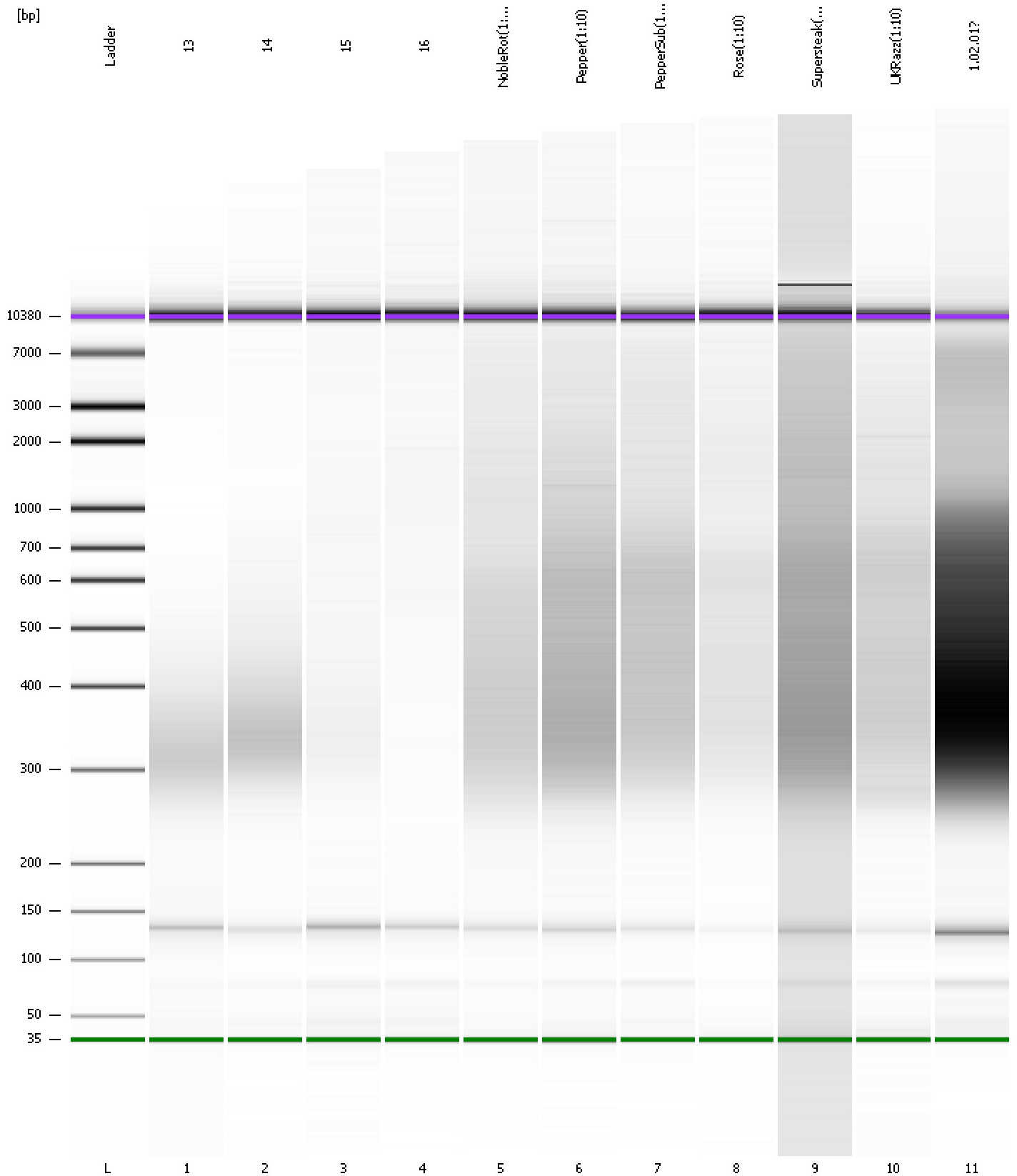
#### Region table for sample 11 : 1.02.01?

From [bp]	Molarity [pmol/l]	Average Size [bp]	Conc. [pg/μl]	To [bp]	Corr. Area	% of Total	Size distribution in CV [%]	Color
103	2,988.8	129	254.78	157	133.0	3	7.0	
227	18,631.6	513	5,112.65	1,681	3,738.6	86	48.2	

Assay Class: High Sensitivity DNA Assay  
Data Path: C:\...ents and Settings\Bioanalyzer\2012-04-25\2012-04-25\_002.xad

Created: 4/25/2012 10:15:24 AM  
Modified: 4/25/2012 11:00:00 AM

**Gel Image**



Assay Class: High Sensitivity DNA Assay  
 Data Path: C:\...ents and Settings\Bioanalyzer\2012-04-25\2012-04-25\_002.xad

Created: 4/25/2012 10:15:24 AM  
 Modified: 4/25/2012 11:00:00 AM

**Run Logbook**

Description	Number	Source	Category	Sub Category	Time	Time Zone	User	Host
Run ended on port 1 (Number of wells acquired: 12)		Instrument	Run		4/25/2012 10:56:42 AM	(GMT --07:00) Pacific Standard Time	UC Davis	D8XSMGH1
Run started on port 1 (File: C:\Documents and Settings\Bioanalyzer\2012-04-25\2012-04-25_002.xad)		Instrument	Run		4/25/2012 10:15:30 AM	(GMT --07:00) Pacific Standard Time	UC Davis	D8XSMGH1
Product Number : G2938B		Instrument	Run		4/25/2012 10:15:30 AM	(GMT --07:00) Pacific Standard Time	UC Davis	D8XSMGH1
Name :		Instrument	Run		4/25/2012 10:15:30 AM	(GMT --07:00) Pacific Standard Time	UC Davis	D8XSMGH1
Vendor : Agilent Technologies		Instrument	Run		4/25/2012 10:15:30 AM	(GMT --07:00) Pacific Standard Time	UC Davis	D8XSMGH1
Serial# : DE13701086		Instrument	Run		4/25/2012 10:15:30 AM	(GMT --07:00) Pacific Standard Time	UC Davis	D8XSMGH1
Firmware : C.01.069		Instrument	Run		4/25/2012 10:15:30 AM	(GMT --07:00) Pacific Standard Time	UC Davis	D8XSMGH1
Cartridge : Electrode		Instrument	Run		4/25/2012 10:15:30 AM	(GMT --07:00) Pacific Standard Time	UC Davis	D8XSMGH1