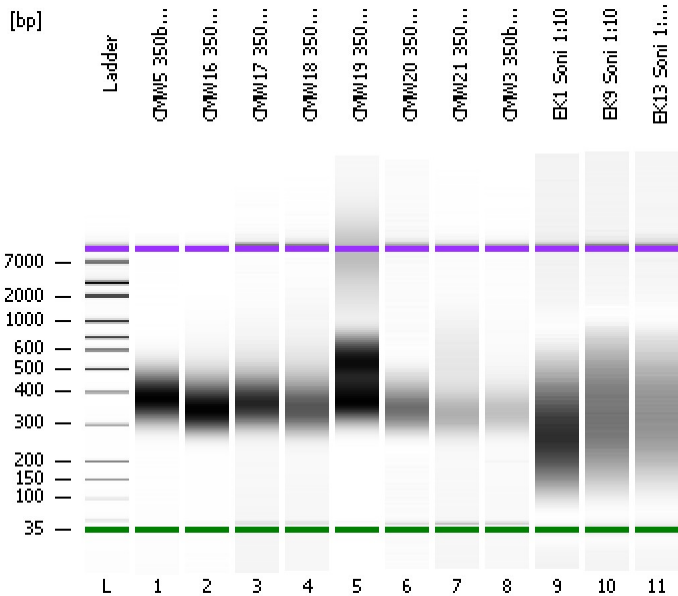


Assay Class: High Sensitivity DNA Assay
Data Path: C:\...ents and Settings\Bioanalyzer\2012-04-25\2012-04-25_003.xad

Created: 4/25/2012 12:09:20 PM
Modified: 4/25/2012 12:56:21 PM

Electrophoresis File Run Summary



Instrument Information:

Instrument Name: DE13701086 Firmware: C.01.069
Serial#: DE13701086 Type: G2938B

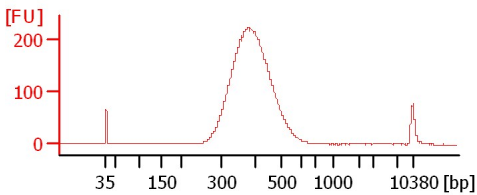
Assay Information:

Assay Origin Path: C:\Program Files\Agilent\2100 bioanalyzer\2100 expert\assays\dsDNA\High Sensitivity DNA.xsy
Assay Class: High Sensitivity DNA Assay
Version: 1.03
Assay Comments: Copyright © 2003-2010 Agilent Technologies

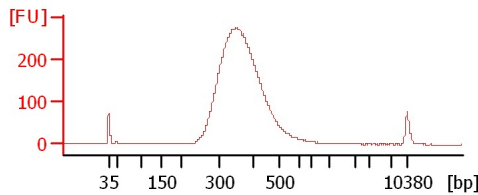
Chip Information:

Chip Lot #:
Reagent Kit Lot #:
Chip Comments:

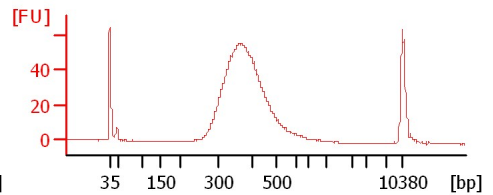
CMW5 350bp Lib



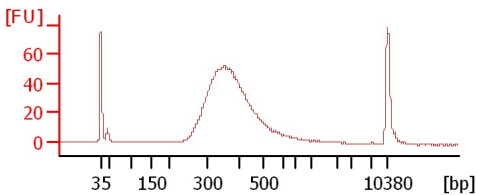
CMW16 350bp Lib



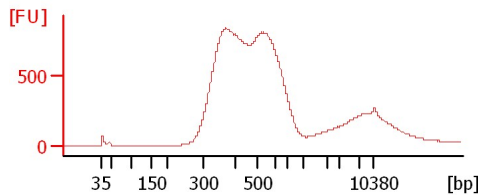
CMW17 350bp Lib



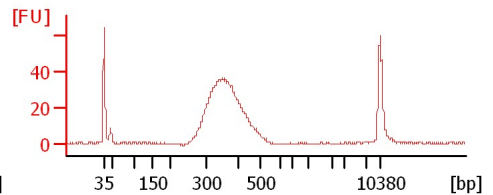
CMW18 350bp Lib



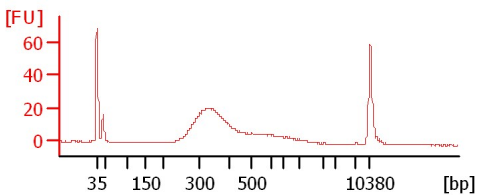
CMW19 350bp Lib



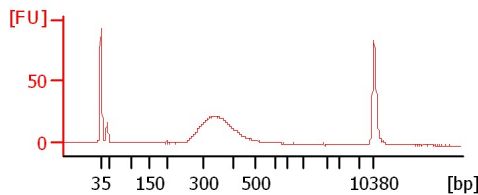
CMW20 350bp Lib



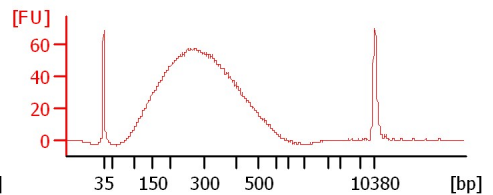
CMW21 350bp Lib



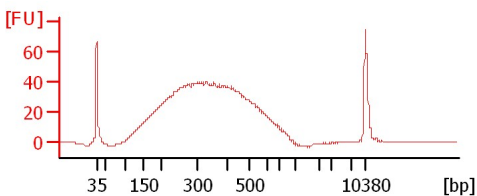
CMW3 350bp Lib



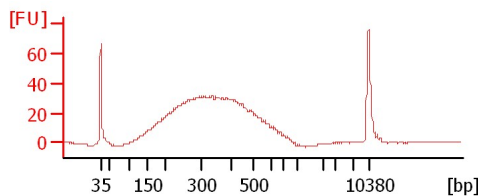
EK1 Soni 1:10



EK9 Soni 1:10



EK13 Soni 1:10



Assay Class: High Sensitivity DNA Assay
Data Path: C:\...ents and Settings\Bioanalyzer\2012-04-25\2012-04-25_003.xad

Created: 4/25/2012 12:09:20 PM
Modified: 4/25/2012 12:56:21 PM

Electrophoresis File Run Summary (Chip Summary)

Sample Name	Sample Comment	Rest. Digest	Status	Observation	Result Label	Result Color
CMW5 350bp Lib		<input type="checkbox"/>	✓			
CMW16 350bp Lib		<input type="checkbox"/>	✓			
CMW17 350bp Lib		<input type="checkbox"/>	✓			
CMW18 350bp Lib		<input type="checkbox"/>	✓			
CMW19 350bp Lib		<input type="checkbox"/>	✓			
CMW20 350bp Lib		<input type="checkbox"/>	✓			
CMW21 350bp Lib		<input type="checkbox"/>	✓			
CMW3 350bp Lib		<input type="checkbox"/>	✓			
EK1 Soni 1:10		<input type="checkbox"/>	✓			
EK9 Soni 1:10		<input type="checkbox"/>	✓			
EK13 Soni 1:10		<input type="checkbox"/>	✓			
Ladder		<input type="checkbox"/>	✓			

Chip Lot #

Reagent Kit Lot #

Chip Comments :

Assay Class: High Sensitivity DNA Assay
 Data Path: C:\...ents and Settings\Bioanalyzer\2012-04-25\2012-04-25_003.xad

Created: 4/25/2012 12:09:20 PM
 Modified: 4/25/2012 12:56:21 PM

Electrophoresis Assay Details

General Analysis Settings

Number of Available Sample and Ladder Wells (Max.) : 12
 Minimum Visible Range [s] : 32
 Maximum Visible Range [s] : 138
 Start Analysis Time Range [s] : 33
 End Analysis Time Range [s] : 137.5
 Ladder Concentration [pg/μl] : 1950
 Uses Standard Area for Ladder Fragments
 Lower Marker Concentration [pg/μl] : 125
 Upper Marker Concentration [pg/μl] : 75
 Used Upper Marker for Quantitation
 Standard Curve Fit is Point to Point
 Show Data Aligned to Lower and Upper Marker

Integrator Settings

Integration Start Time [s] : 33.05
 Integration End Time [s] : 137
 Slope Threshold : 0.8
 Height Threshold [FU] : 5
 Area Threshold : 0.1
 Width Threshold [s] : 0.6
 Baseline Plateau [s] : 0.5

Filter Settings

Filter Width [s] : 0.5
 Polynomial Order : 4

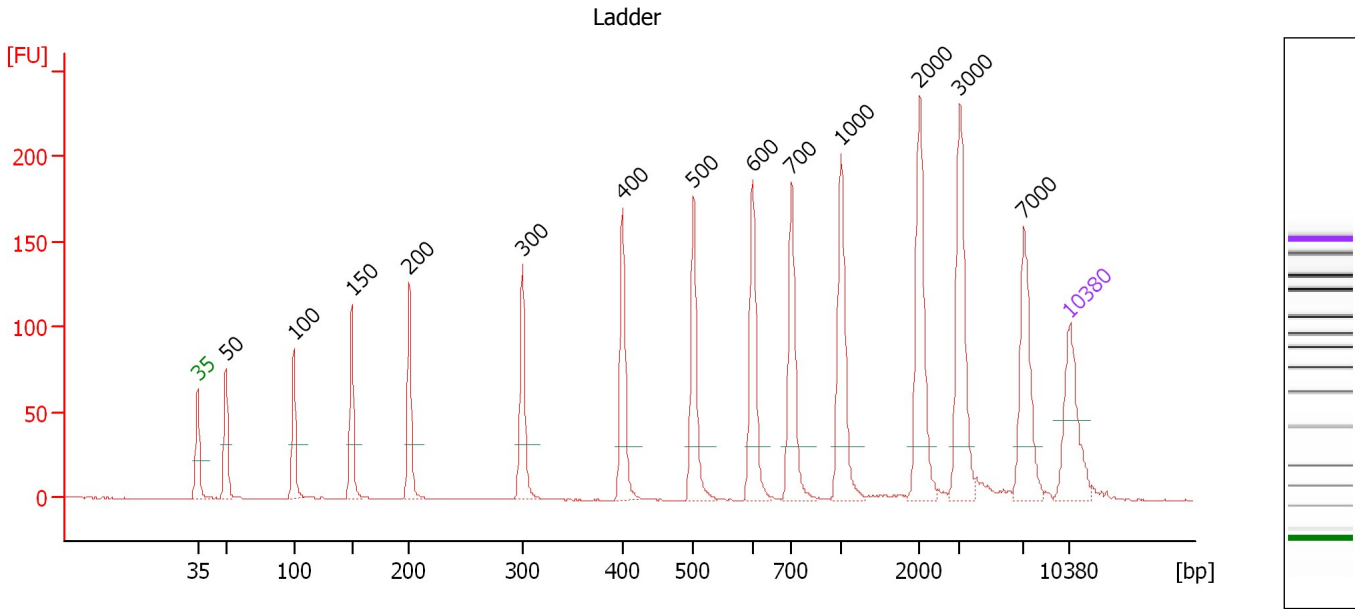
Ladder

Ladder Peak	Size	Area
1	35	160
2	50	210
3	100	208
4	150	221
5	200	242
6	300	270
7	400	305
8	500	306
9	600	336
10	700	321
11	1000	366
12	2000	413
13	3000	411
14	7000	400
15	10380	214

Assay Class: High Sensitivity DNA Assay
 Data Path: C:\...ents and Settings\Bioanalyzer\2012-04-25\2012-04-25_003.xad

Created: 4/25/2012 12:09:20 PM
 Modified: 4/25/2012 12:56:21 PM

Electropherogram Summary



Overall Results for Ladder

Noise: 0.1

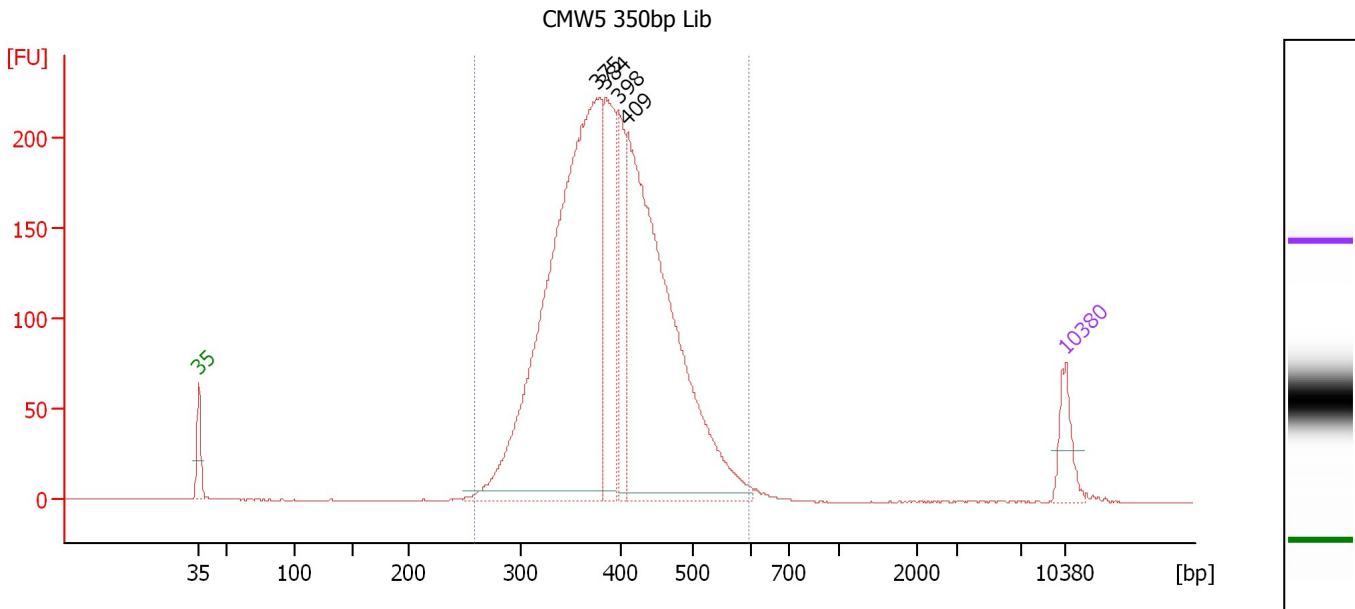
Peak table for Ladder

Peak	Size [bp]	Conc. [pg/μl]	Molarity [pmol/l]	Observations
1	35	125.00	5,411.3	Lower Marker
2	50	150.00	4,545.5	Ladder Peak
3	100	150.00	2,272.7	Ladder Peak
4	150	150.00	1,515.2	Ladder Peak
5	200	150.00	1,136.4	Ladder Peak
6	300	150.00	757.6	Ladder Peak
7	400	150.00	568.2	Ladder Peak
8	500	150.00	454.5	Ladder Peak
9	600	150.00	378.8	Ladder Peak
10	700	150.00	324.7	Ladder Peak
11	1,000	150.00	227.3	Ladder Peak
12	2,000	150.00	113.6	Ladder Peak
13	3,000	150.00	75.8	Ladder Peak
14	7,000	150.00	32.5	Ladder Peak
15	10,380	75.00	10.9	Upper Marker

Assay Class: High Sensitivity DNA Assay
 Data Path: C:\...ents and Settings\Bioanalyzer\2012-04-25\2012-04-25_003.xad

Created: 4/25/2012 12:09:20 PM
 Modified: 4/25/2012 12:56:21 PM

Electropherogram Summary Continued ...



Overall Results for sample 1 : CMW5 350bp Lib

Number of peaks found: 4 Corr. Area 1: 3,290.1
 Noise: 0.2

Peak table for sample 1 : CMW5 350bp Lib

Peak	Size [bp]	Conc. [pg/μl]	Molarity [pmol/l]	Observations
1	35	125.00	5,411.3	Lower Marker
2	375	2,112.25	8,532.8	
3	384	423.69	1,671.1	
4	398	228.83	872.1	
5	409	1,521.37	5,641.3	
6	10,380	75.00	10.9	Upper Marker

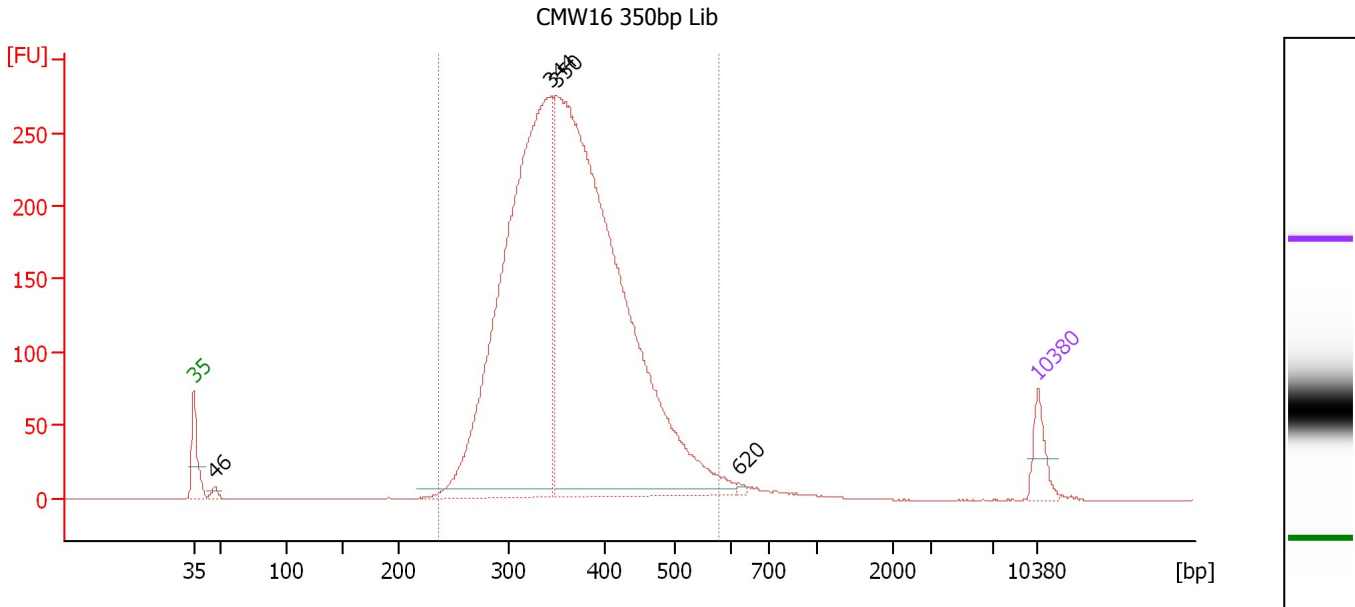
Region table for sample 1 : CMW5 350bp Lib

From [bp]	Molarity [pmol/l]	Average Size [bp]	Conc. [pg/μl]	To [bp]	Corr. Area	% of Total	Size distribution in CV [%]	Color
258	17,586.8	394	4,445.67	598	3,290.1	99	15.3	Blue

Assay Class: High Sensitivity DNA Assay
 Data Path: C:\...ents and Settings\Bioanalyzer\2012-04-25\2012-04-25_003.xad

Created: 4/25/2012 12:09:20 PM
 Modified: 4/25/2012 12:56:21 PM

Electropherogram Summary Continued ...



Overall Results for sample 2 : CMW16 350bp Lib

Number of peaks found: 4 Corr. Area 1: 4,409.9
 Noise: 0.2

Peak table for sample 2 : CMW16 350bp Lib

Peak	Size [bp]	Conc. [pg/μl]	Molarity [pmol/l]	Observations
1	35	125.00	5,411.3	Lower Marker
2	46	25.40	829.2	
3	344	2,727.44	12,026.9	
4	350	3,618.15	15,678.8	
5	620	7.28	17.8	
6	10,380	75.00	10.9	Upper Marker

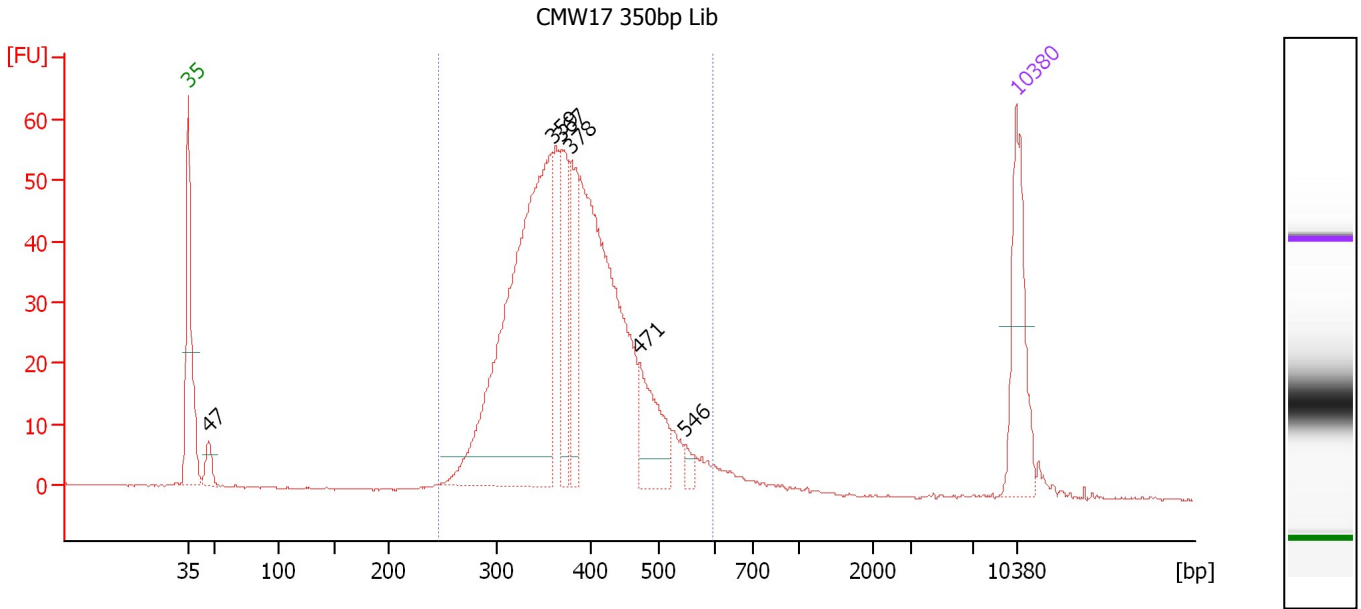
Region table for sample 2 : CMW16 350bp Lib

From [bp]	Molarity [pmol/l]	Average Size [bp]	Conc. [pg/μl]	To [bp]	Corr. Area	% of Total	Size distribution in CV [%]	Color
237	27,188.6	366	6,336.47	578	4,409.9	98	16.7	Blue

Assay Class: High Sensitivity DNA Assay
 Data Path: C:\...ents and Settings\Bioanalyzer\2012-04-25\2012-04-25_003.xad

Created: 4/25/2012 12:09:20 PM
 Modified: 4/25/2012 12:56:21 PM

Electropherogram Summary Continued ...



Overall Results for sample 3 : CMW17 350bp Lib

Number of peaks found: 6 Corr. Area 1: 858.6
 Noise: 0.2

Peak table for sample 3 : CMW17 350bp Lib

Peak	Size [bp]	Conc. [pg/μl]	Molarity [pmol/l]	Observations
1	35	125.00	5,411.3	Lower Marker
2	47	24.25	788.1	
3	359	500.77	2,116.2	
4	367	88.08	363.7	
5	378	82.16	329.7	
6	471	74.64	240.0	
7	546	9.17	25.5	
8	10,380	75.00	10.9	Upper Marker

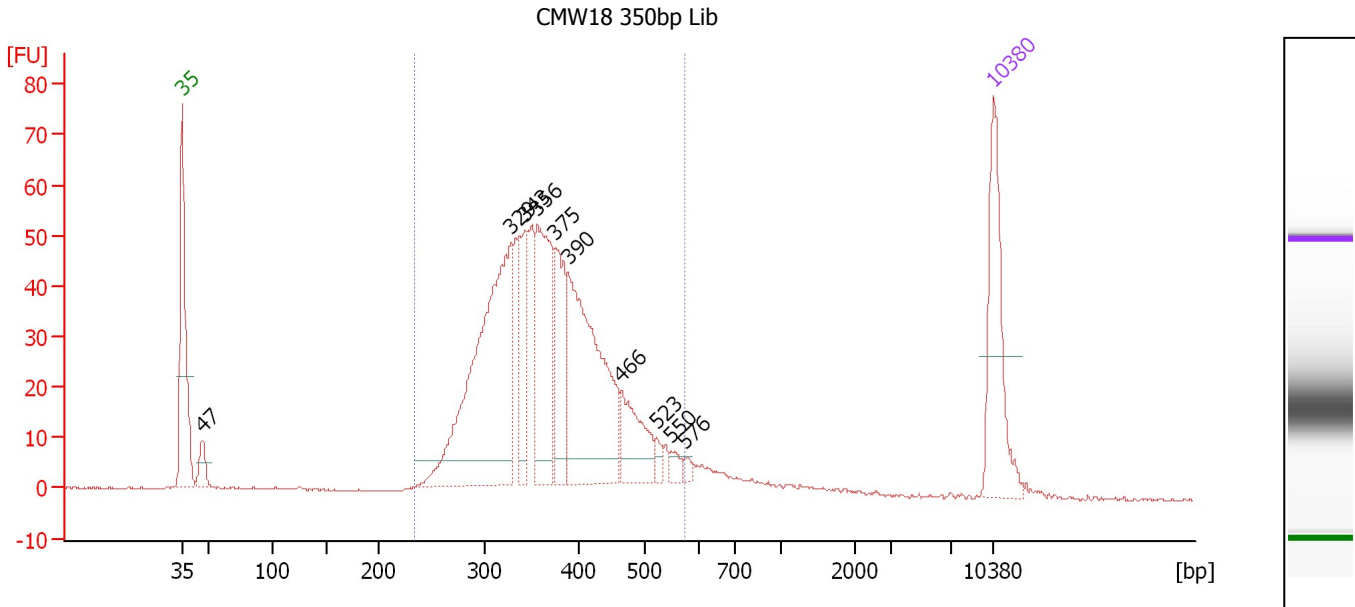
Region table for sample 3 : CMW17 350bp Lib

From [bp]	Molarity [pmol/l]	Average Size [bp]	Conc. [pg/μl]	To [bp]	Corr. Area	% of Total	Size distribution in CV [%]	Color
246	5,236.3	383	1,280.56	594	858.6	95	16.7	Blue

Assay Class: High Sensitivity DNA Assay
 Data Path: C:\...ents and Settings\Bioanalyzer\2012-04-25\2012-04-25_003.xad

Created: 4/25/2012 12:09:20 PM
 Modified: 4/25/2012 12:56:21 PM

Electropherogram Summary Continued ...



Overall Results for sample 4 : CMW18 350bp Lib

Number of peaks found: 10 Corr. Area 1: 889.5
 Noise: 0.2

Peak table for sample 4 : CMW18 350bp Lib

Peak	Size [bp]	Conc. [pg/μl]	Molarity [pmol/l]	Observations
1	35	125.00	5,411.3	Lower Marker
2	47	23.86	776.7	
3	329	313.35	1,444.7	
4	343	56.07	247.4	
5	356	130.90	557.0	
6	375	80.35	324.7	
7	390	206.48	802.6	
8	466	56.37	183.2	
9	523	8.05	23.3	
10	550	7.94	21.9	
11	576	4.64	12.2	
12	10,380	75.00	10.9	Upper Marker

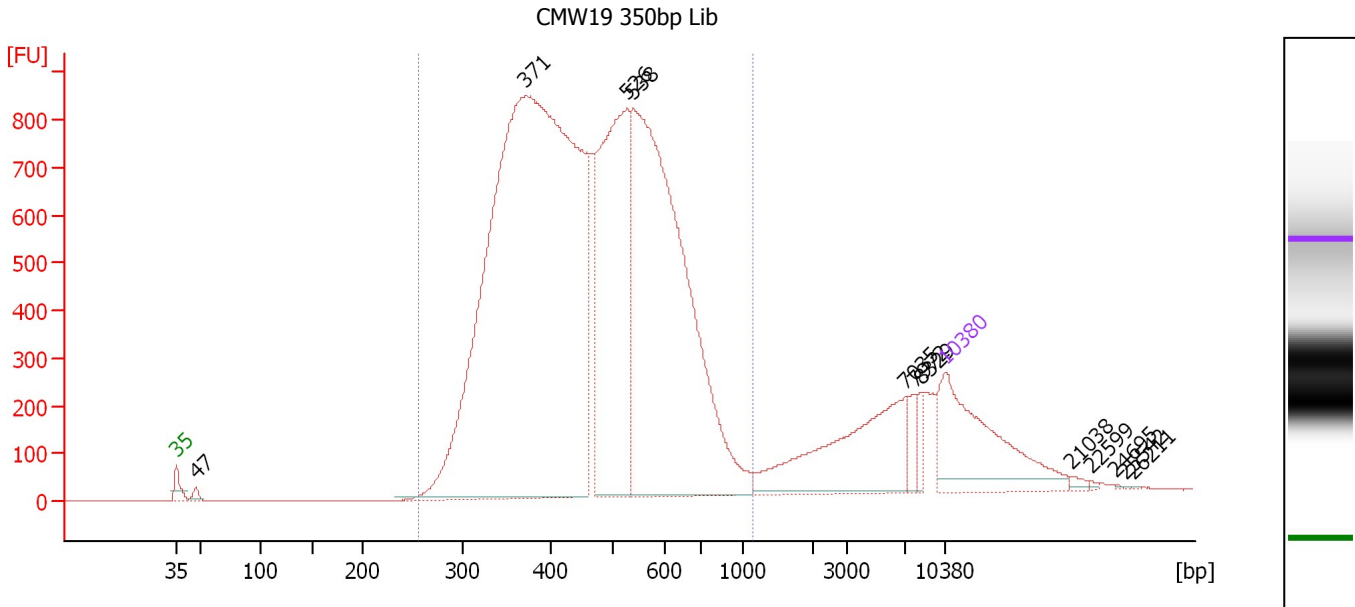
Region table for sample 4 : CMW18 350bp Lib

From [bp]	Molarity [pmol/l]	Average Size [bp]	Conc. [pg/μl]	To [bp]	Corr. Area	% of Total	Size distribution in CV [%]	Color
234	4,506.3	372	1,062.41	576	889.5	91	18.0	Blue

Assay Class: High Sensitivity DNA Assay
 Data Path: C:\...ents and Settings\Bioanalyzer\2012-04-25\2012-04-25_003.xad

Created: 4/25/2012 12:09:20 PM
 Modified: 4/25/2012 12:56:21 PM

Electropherogram Summary Continued ...



Overall Results for sample 5 : CMW19 350bp Lib

Number of peaks found: 12 Corr. Area 1: 20,023.4
 Noise: 0.1

Peak table for sample 5 : CMW19 350bp Lib

Peak	Size [bp]	Conc. [pg/μl]	Molarity [pmol/l]	Observations
1	35	125.00	5,411.3	Lower Marker
2	47	5.17	167.2	
3	371	952.61	3,892.8	
4	526	248.85	716.9	
5	538	440.57	1,240.4	
6	7,035	90.48	19.5	
7	7,972	10.59	2.0	
8	8,329	7.29	1.3	
9	10,380	75.00	10.9	Upper Marker
10	21,038	0.00	0.0	
11	22,599	0.00	0.0	
12	24,695	0.00	0.0	
13	25,542	0.00	0.0	
14	26,211	0.00	0.0	

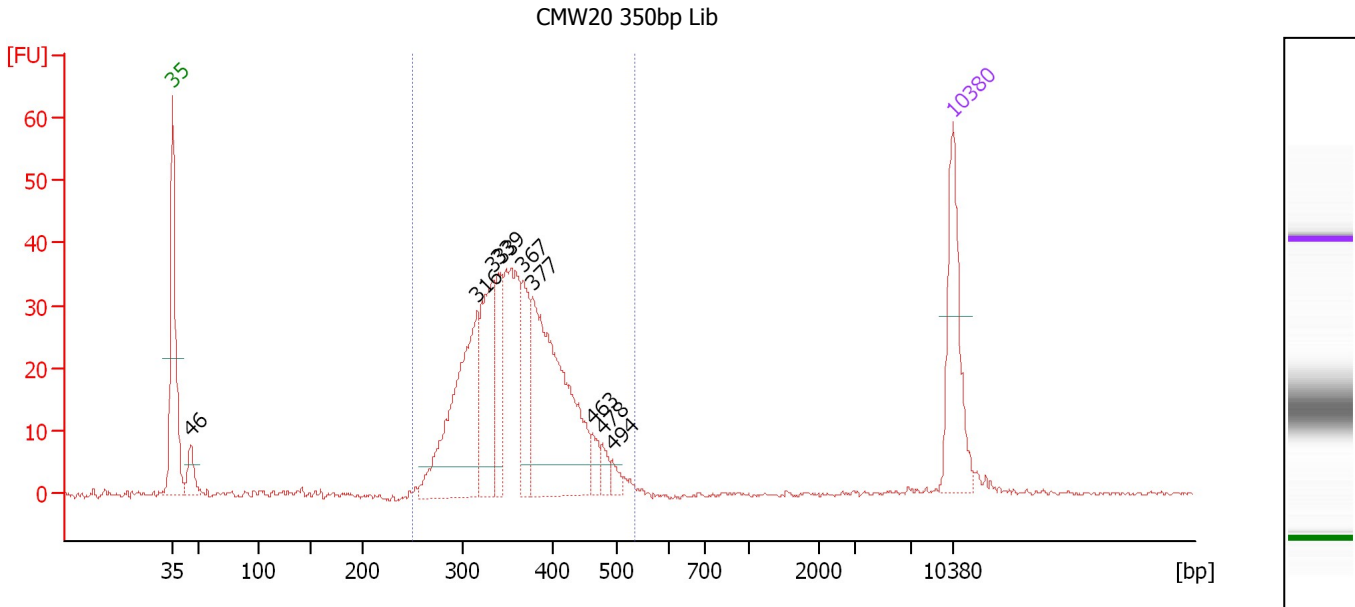
Region table for sample 5 : CMW19 350bp Lib

From [bp]	Molarity [pmol/l]	Average Size [bp]	Conc. [pg/μl]	To [bp]	Corr. Area	% of Total	Size distribution in CV [%]	Color
256	5,690.1	474	1,633.18	1,123	20,023.3	90	26.3	Blue

Assay Class: High Sensitivity DNA Assay
 Data Path: C:\...ents and Settings\Bioanalyzer\2012-04-25\2012-04-25_003.xad

Created: 4/25/2012 12:09:20 PM
 Modified: 4/25/2012 12:56:21 PM

Electropherogram Summary Continued ...



Overall Results for sample 6 : CMW20 350bp Lib

Number of peaks found: 9 Corr. Area 1: 515.5
 Noise: 0.4

Peak table for sample 6 : CMW20 350bp Lib

Peak	Size [bp]	Conc. [pg/μl]	Molarity [pmol/l]	Observations
1	35	125.00	5,411.3	Lower Marker
2	46	32.14	1,064.3	
3	316	205.77	986.3	
4	333	116.81	531.0	
5	339	58.40	260.8	
6	367	66.26	273.8	
7	377	251.33	1,010.8	
8	463	14.98	49.0	
9	478	11.63	36.9	
10	494	9.75	29.9	
11	10,380	75.00	10.9	Upper Marker

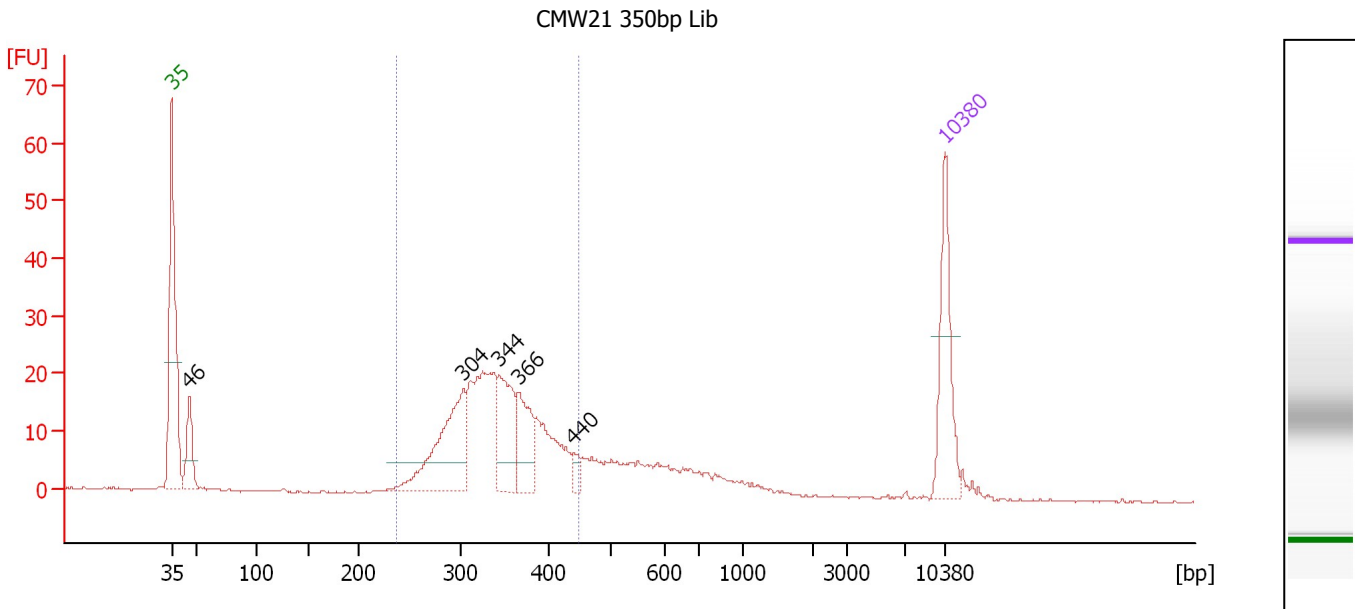
Region table for sample 6 : CMW20 350bp Lib

From [bp]	Molarity [pmol/l]	Average Size [bp]	Conc. [pg/μl]	To [bp]	Corr. Area	% of Total	Size distribution in CV [%]	Color
249	3,755.7	362	874.58	534	515.5	90	14.7	Blue

Assay Class: High Sensitivity DNA Assay
 Data Path: C:\...ents and Settings\Bioanalyzer\2012-04-25\2012-04-25_003.xad

Created: 4/25/2012 12:09:20 PM
 Modified: 4/25/2012 12:56:21 PM

Electropherogram Summary Continued ...



Overall Results for sample 7 : CMW21 350bp Lib

Number of peaks found: 5 Corr. Area 1: 292.8
 Noise: 0.2

Peak table for sample 7 : CMW21 350bp Lib

Peak	Size [bp]	Conc. [pg/μl]	Molarity [pmol/l]	Observations
1	35	125.00	5,411.3	Lower Marker
2	46	63.61	2,117.2	
3	304	149.73	746.5	
4	344	87.09	383.5	
5	366	66.90	276.8	
6	440	12.39	42.7	
7	10,380	75.00	10.9	Upper Marker

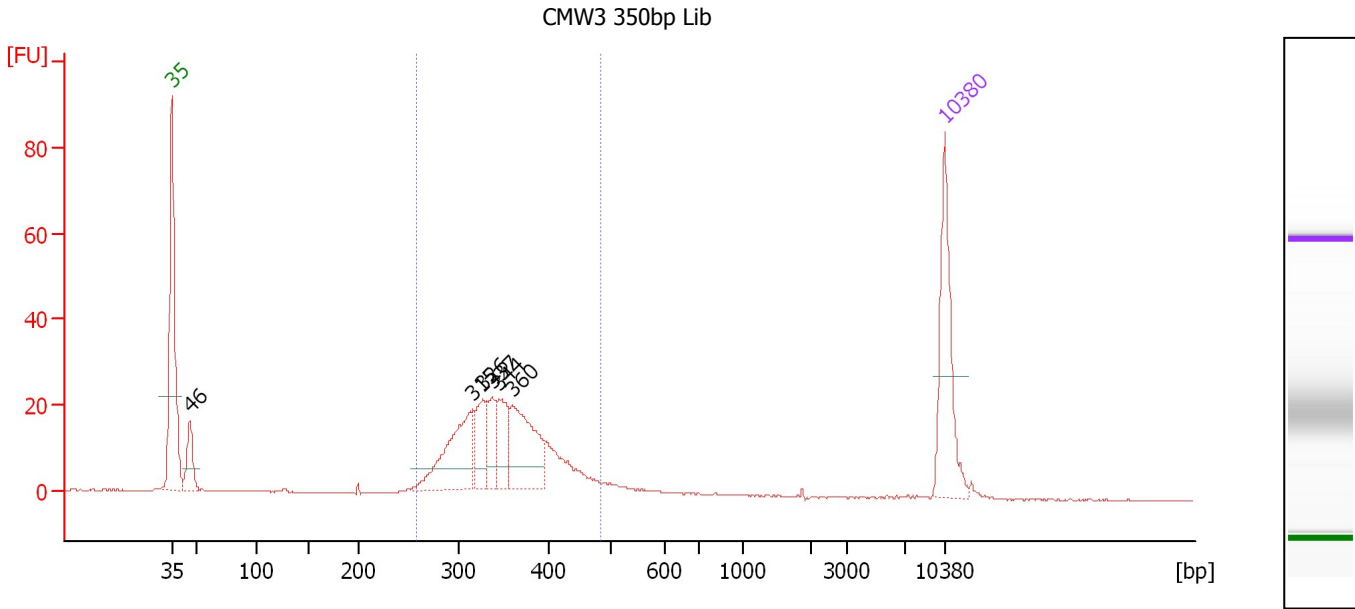
Region table for sample 7 : CMW21 350bp Lib

From [bp]	Molarity [pmol/l]	Average Size [bp]	Conc. [pg/μl]	To [bp]	Corr. Area	% of Total	Size distribution in CV [%]	Color
237	2,584.1	341	569.38	448	292.8	69	13.3	Blue

Assay Class: High Sensitivity DNA Assay
 Data Path: C:\...ents and Settings\Bioanalyzer\2012-04-25\2012-04-25_003.xad

Created: 4/25/2012 12:09:20 PM
 Modified: 4/25/2012 12:56:21 PM

Electropherogram Summary Continued ...



Overall Results for sample 8 : CMW3 350bp Lib

Number of peaks found: 6 Corr. Area 1: 300.4
 Noise: 0.1

Peak table for sample 8 : CMW3 350bp Lib

Peak	Size [bp]	Conc. [pg/μl]	Molarity [pmol/l]	Observations
1	35	125.00	5,411.3	Lower Marker
2	46	45.85	1,515.2	
3	315	101.87	490.1	
4	326	38.47	178.6	
5	337	31.34	140.8	
6	344	46.75	205.7	
7	360	90.38	380.5	
8	10,380	75.00	10.9	Upper Marker

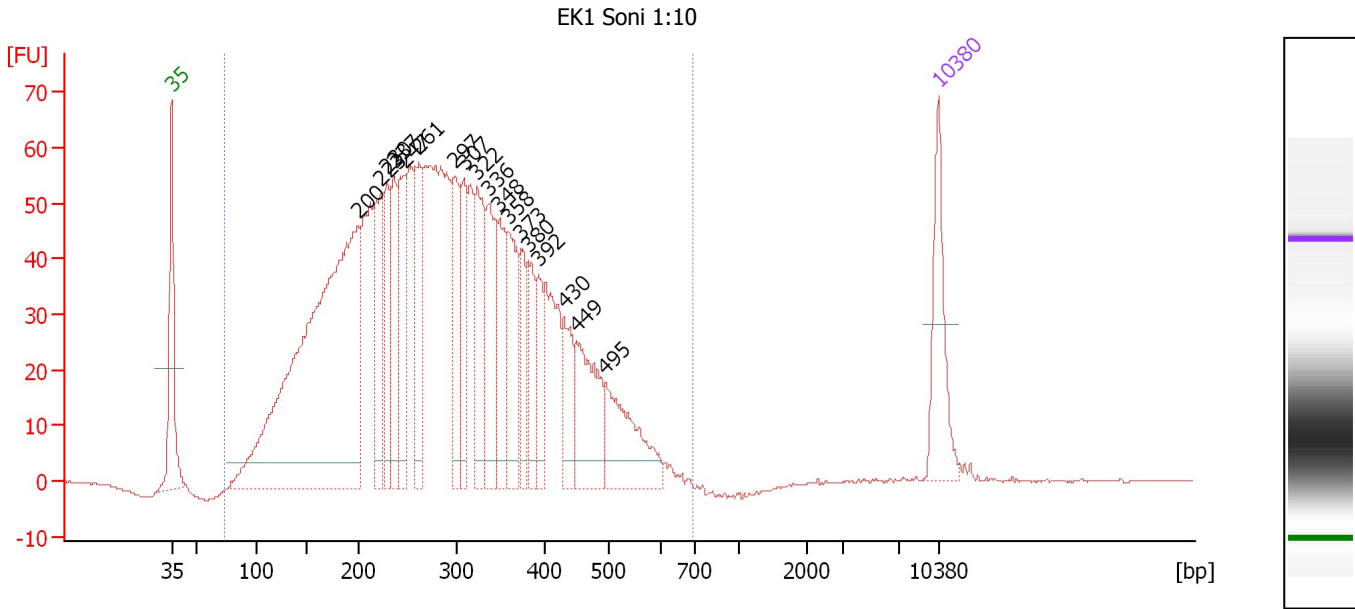
Region table for sample 8 : CMW3 350bp Lib

From [bp]	Molarity [pmol/l]	Average Size [bp]	Conc. [pg/μl]	To [bp]	Corr. Area	% of Total	Size distribution in CV [%]	Color
257	1,783.5	350	403.69	484	300.4	85	13.4	Blue

Assay Class: High Sensitivity DNA Assay
 Data Path: C:\...ents and Settings\Bioanalyzer\2012-04-25\2012-04-25_003.xad

Created: 4/25/2012 12:09:20 PM
 Modified: 4/25/2012 12:56:21 PM

Electropherogram Summary Continued ...



Overall Results for sample 9 : EK1 Soni 1:10

Number of peaks found: 18 Corr. Area 1: 2,017.5
 Noise: 0.1

Peak table for sample 9 : EK1 Soni 1:10

Peak	Size [bp]	Conc. [pg/μl]	Molarity [pmol/l]	Observations
1	35	125.00	5,411.3	Lower Marker
2	200	927.83	7,036.5	
3	223	140.02	952.1	
4	230	103.25	680.8	
5	237	103.10	659.8	
6	247	117.66	721.9	
7	261	102.01	591.3	
8	297	109.74	559.3	
9	307	86.14	424.8	
10	322	128.09	602.0	
11	336	117.87	532.1	
12	348	98.53	429.3	
13	358	100.52	425.4	
14	373	61.00	248.1	
15	380	60.66	241.6	
16	392	52.12	201.5	
17	430	70.25	247.8	
18	449	112.50	379.5	
19	495	115.66	353.8	
20	10,380	75.00	10.9	Upper Marker

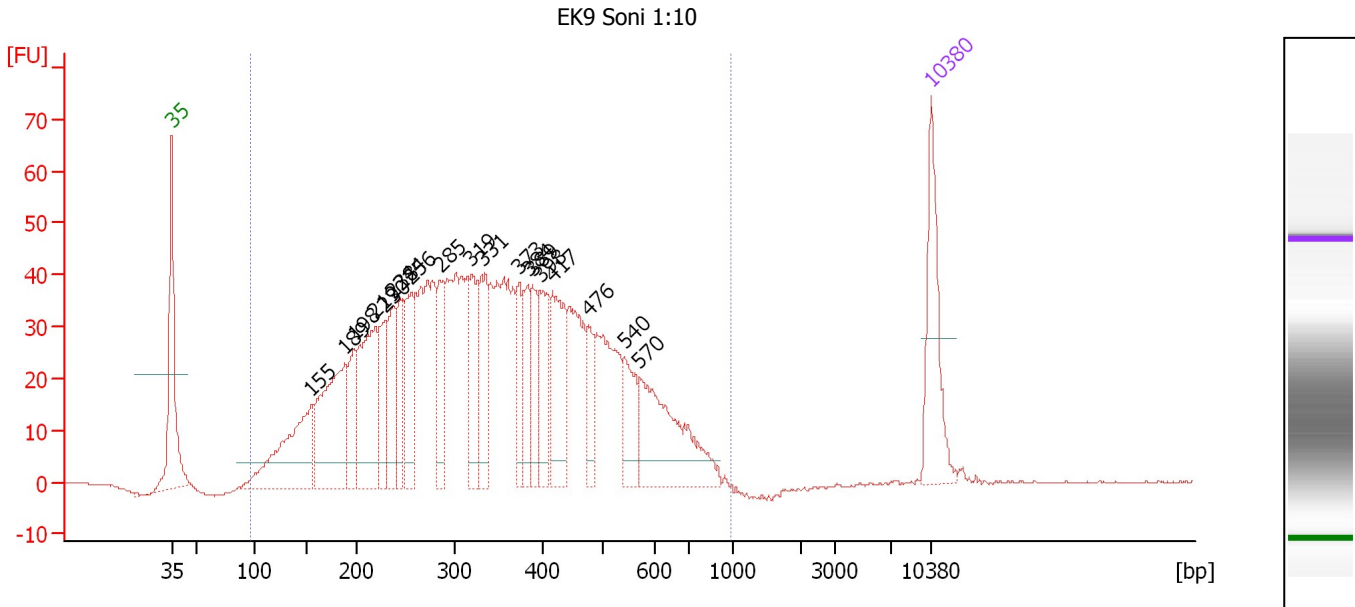
Region table for sample 9 : EK1 Soni 1:10

From [bp]	Molarity [pmol/l]	Average Size [bp]	Conc. [pg/μl]	To [bp]	Corr. Area	% of Total	Size distribution in CV [%]	Color
74	22,656.0	293	3,548.31	695	2,017.5	100	35.5	Blue

Assay Class: High Sensitivity DNA Assay
 Data Path: C:\...ents and Settings\Bioanalyzer\2012-04-25\2012-04-25_003.xad

Created: 4/25/2012 12:09:20 PM
 Modified: 4/25/2012 12:56:21 PM

Electropherogram Summary Continued ...



Overall Results for sample 10 : EK9 Soni 1:10

Number of peaks found: 19 Corr. Area 1: 1,576.5
 Noise: 0.1

Peak table for sample 10 : EK9 Soni 1:10

Peak	Size [bp]	Conc. [pg/μl]	Molarity [pmol/l]	Observations
1	35	125.00	5,411.3	Lower Marker
2	155	176.23	1,724.5	
3	189	192.39	1,543.6	
4	198	59.47	454.1	
5	219	156.03	1,077.1	
6	230	59.38	391.6	
7	238	84.47	538.1	
8	244	60.07	372.5	
9	256	78.87	467.3	
10	285	64.85	344.8	
11	319	73.46	348.8	
12	331	83.54	382.1	
13	373	47.37	192.2	
14	384	49.60	195.8	
15	389	55.60	216.4	
16	398	63.78	242.9	
17	417	100.89	366.8	
18	476	35.74	113.7	
19	540	51.23	143.8	
20	570	139.29	370.4	
21	10,380	75.00	10.9	Upper Marker

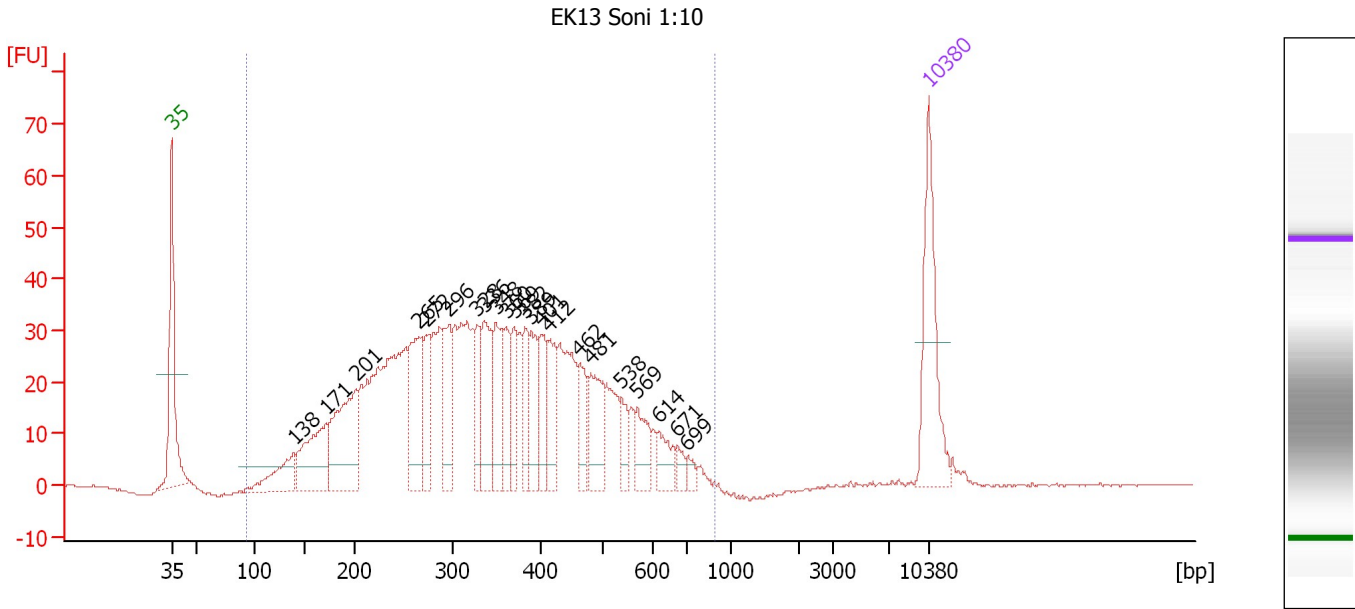
Region table for sample 10 : EK9 Soni 1:10

From [bp]	Molarity [pmol/l]	Average Size [bp]	Conc. [pg/μl]	To [bp]	Corr. Area	% of Total	Size distribution in CV [%]	Color
96	13,132.6	355	2,408.85	983	1,576.5	100	38.8	Blue

Assay Class: High Sensitivity DNA Assay
 Data Path: C:\...ents and Settings\Bioanalyzer\2012-04-25\2012-04-25_003.xad

Created: 4/25/2012 12:09:20 PM
 Modified: 4/25/2012 12:56:21 PM

Electropherogram Summary Continued ...



Overall Results for sample 11 : EK13 Soni 1:10

Number of peaks found: 22 Corr. Area 1: 1,154.6
 Noise: 0.1

Peak table for sample 11 : EK13 Soni 1:10


Peak	Size [bp]	Conc. [pg/μl]	Molarity [pmol/l]	Observations
1	35	125.00	5,411.3	Lower Marker
2	138	54.66	598.5	
3	171	94.86	838.9	
4	201	123.59	933.3	
5	265	91.94	526.2	
6	272	44.85	250.0	
7	296	58.02	297.3	
8	328	41.20	190.5	
9	336	65.98	297.9	
10	348	51.27	222.9	
11	360	40.56	170.7	
12	369	36.74	150.8	
13	382	35.53	140.9	
14	389	41.96	163.5	
15	401	42.90	162.2	
16	412	43.19	158.9	
17	462	32.29	105.9	
18	481	55.08	173.4	
19	538	21.05	59.3	
20	569	29.13	77.6	
21	614	21.92	54.1	
22	671	9.72	22.0	
23	699	7.85	17.0	
24	10,380	75.00	10.9	Upper Marker

Assay Class: High Sensitivity DNA Assay
Data Path: C:\...ents and Settings\Bioanalyzer\2012-04-25\2012-04-25_003.xad

Created: 4/25/2012 12:09:20 PM
Modified: 4/25/2012 12:56:21 PM

Electropherogram Summary Continued ...

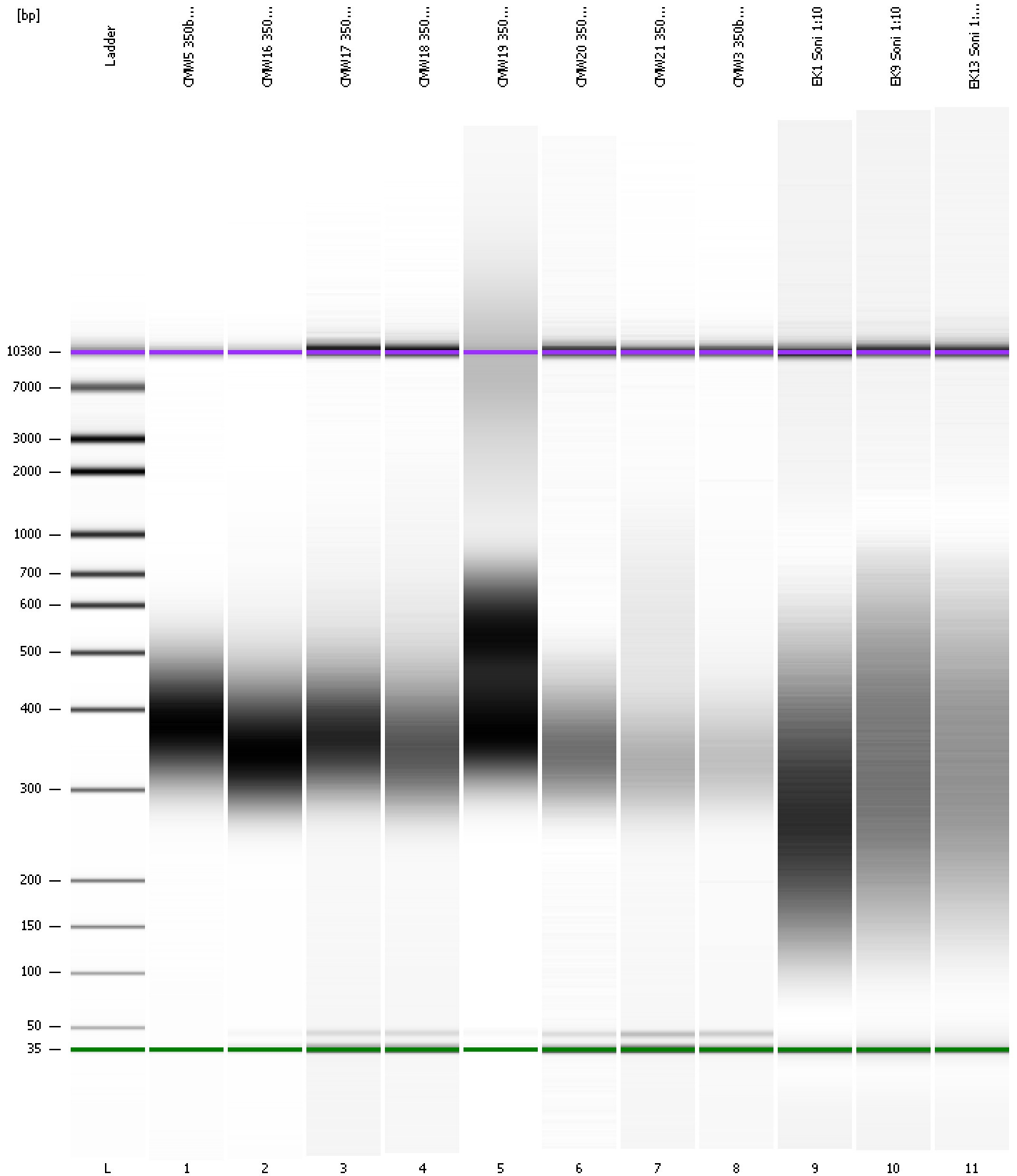
... Region table for sample 11 : EK13 Soni 1:10

From [bp]	Molarity [pmol/l]	Average Size [bp]	Conc. [pg/μl]	To [bp]	Corr. Area	% of Total	Size distribution in CV [%]	Color
93	8,858.0	352	1,668.07	888	1,154.6	99	36.0	

Assay Class: High Sensitivity DNA Assay
Data Path: C:\...ents and Settings\Bioanalyzer\2012-04-25\2012-04-25_003.xad

Created: 4/25/2012 12:09:20 PM
Modified: 4/25/2012 12:56:21 PM

Gel Image



Assay Class: High Sensitivity DNA Assay
 Data Path: C:\...ents and Settings\Bioanalyzer\2012-04-25\2012-04-25_003.xad

Created: 4/25/2012 12:09:20 PM
 Modified: 4/25/2012 12:56:21 PM

Run Logbook

Description	Number	Source	Category	Sub Category	Time	Time Zone	User	Host
Run ended on port 1 (Number of wells acquired: 12)		Instrument	Run		4/25/2012 12:50:38 PM	(GMT --07:00) Pacific Standard Time	UC Davis	D8XSMGH1
Run started on port 1 (File: C:\Documents and Settings\Bioanalyzer\2012-04-25\2012-04-25_003.xad)		Instrument	Run		4/25/2012 12:09:26 PM	(GMT --07:00) Pacific Standard Time	UC Davis	D8XSMGH1
Product Number : G2938B		Instrument	Run		4/25/2012 12:09:26 PM	(GMT --07:00) Pacific Standard Time	UC Davis	D8XSMGH1
Name :		Instrument	Run		4/25/2012 12:09:26 PM	(GMT --07:00) Pacific Standard Time	UC Davis	D8XSMGH1
Vendor : Agilent Technologies		Instrument	Run		4/25/2012 12:09:26 PM	(GMT --07:00) Pacific Standard Time	UC Davis	D8XSMGH1
Serial# : DE13701086		Instrument	Run		4/25/2012 12:09:26 PM	(GMT --07:00) Pacific Standard Time	UC Davis	D8XSMGH1
Firmware : C.01.069		Instrument	Run		4/25/2012 12:09:26 PM	(GMT --07:00) Pacific Standard Time	UC Davis	D8XSMGH1
Cartridge : Electrode		Instrument	Run		4/25/2012 12:09:26 PM	(GMT --07:00) Pacific Standard Time	UC Davis	D8XSMGH1