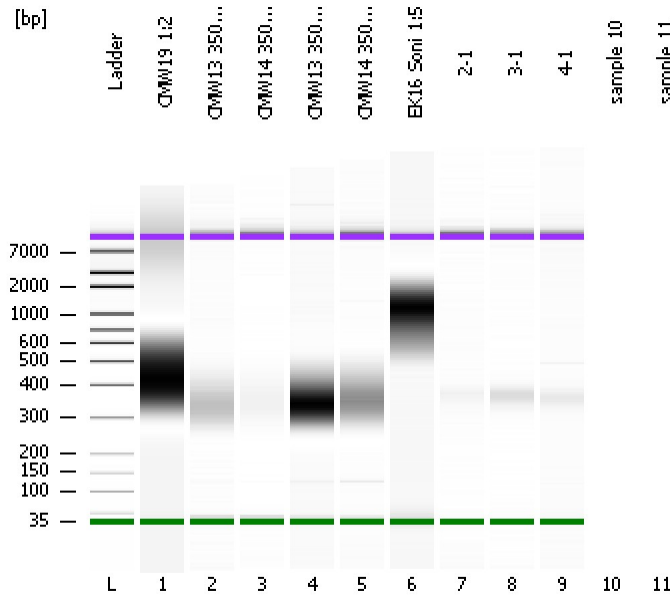


Assay Class: High Sensitivity DNA Assay
Data Path: C:\...ents and Settings\Bioanalyzer\2012-04-26\2012-04-26_001.xad

Created: 4/26/2012 9:51:01 AM
Modified: 4/26/2012 10:39:21 AM

Electrophoresis File Run Summary



Instrument Information:

Instrument Name: DE13701086 Firmware: C.01.069
Serial#: DE13701086 Type: G2938B

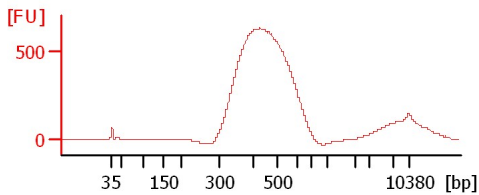
Assay Information:

Assay Origin Path: C:\Program Files\Agilent\2100 bioanalyzer\2100 expert\assays\dsDNA\High Sensitivity DNA.xsy
Assay Class: High Sensitivity DNA Assay
Version: 1.03
Assay Comments: Copyright © 2003-2010 Agilent Technologies

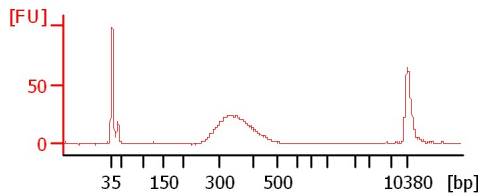
Chip Information:

Chip Lot #: Reagent Kit Lot #: Chip Comments:

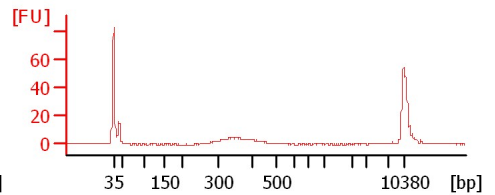
CMW19 1:2



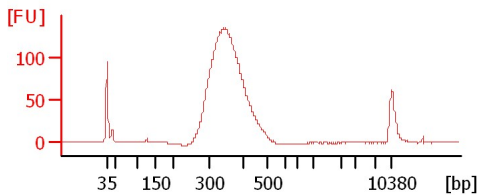
CMW13 350bp Lib 4/23



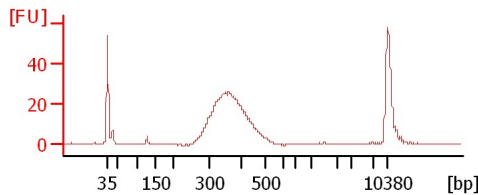
CMW14 350bp Lib 4/23



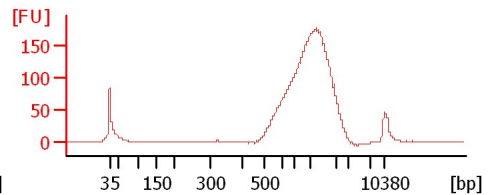
CMW13 350bp Lib 4/26



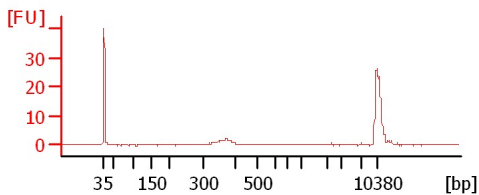
CMW14 350bp Lib 4/26



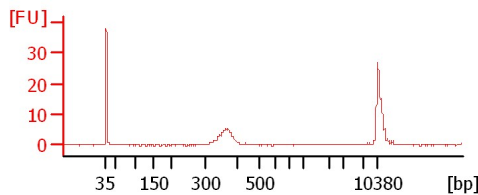
EK16 Soni 1:5



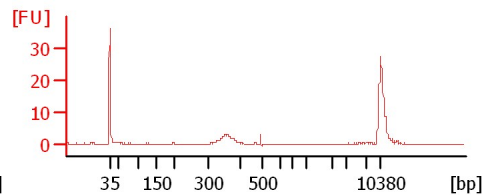
2-1



3-1



4-1



Assay Class: High Sensitivity DNA Assay
Data Path: C:\...ents and Settings\Bioanalyzer\2012-04-26\2012-04-26_001.xad

Created: 4/26/2012 9:51:01 AM
Modified: 4/26/2012 10:39:21 AM

Electrophoresis File Run Summary (Chip Summary)

Sample Name	Sample Comment	Rest. Digest	Status	Observation	Result Label	Result Color
CMW19 1:2		<input type="checkbox"/>	✓			
CMW13 350bp Lib 4/23		<input type="checkbox"/>	✓			
CMW14 350bp Lib 4/23		<input type="checkbox"/>	✓			
CMW13 350bp Lib 4/26		<input type="checkbox"/>	✓			
CMW14 350bp Lib 4/26		<input type="checkbox"/>	✓			
EK16 Soni 1:5		<input type="checkbox"/>	✓			
2-1		<input type="checkbox"/>	✓			
3-1		<input type="checkbox"/>	✓			
4-1		<input type="checkbox"/>	✓			
sample 10		<input type="checkbox"/>				
sample 11		<input type="checkbox"/>				
Ladder		<input type="checkbox"/>	✓			

Chip Lot #

Reagent Kit Lot #

Chip Comments :

Assay Class: High Sensitivity DNA Assay
Data Path: C:\...ents and Settings\Bioanalyzer\2012-04-26\2012-04-26_001.xad

Created: 4/26/2012 9:51:01 AM
Modified: 4/26/2012 10:39:21 AM

Electrophoresis Assay Details

General Analysis Settings

Number of Available Sample and Ladder Wells (Max.) : 12
Minimum Visible Range [s] : 32
Maximum Visible Range [s] : 138
Start Analysis Time Range [s] : 33
End Analysis Time Range [s] : 137.5
Ladder Concentration [pg/μl] : 1950
Uses Standard Area for Ladder Fragments
Lower Marker Concentration [pg/μl] : 125
Upper Marker Concentration [pg/μl] : 75
Used Upper Marker for Quantitation
Standard Curve Fit is Point to Point
Show Data Aligned to Lower and Upper Marker

Integrator Settings

Integration Start Time [s] : 33.05
Integration End Time [s] : 137
Slope Threshold : 0.8
Height Threshold [FU] : 5
Area Threshold : 0.1
Width Threshold [s] : 0.6
Baseline Plateau [s] : 0.5

Filter Settings

Filter Width [s] : 0.5
Polynomial Order : 4

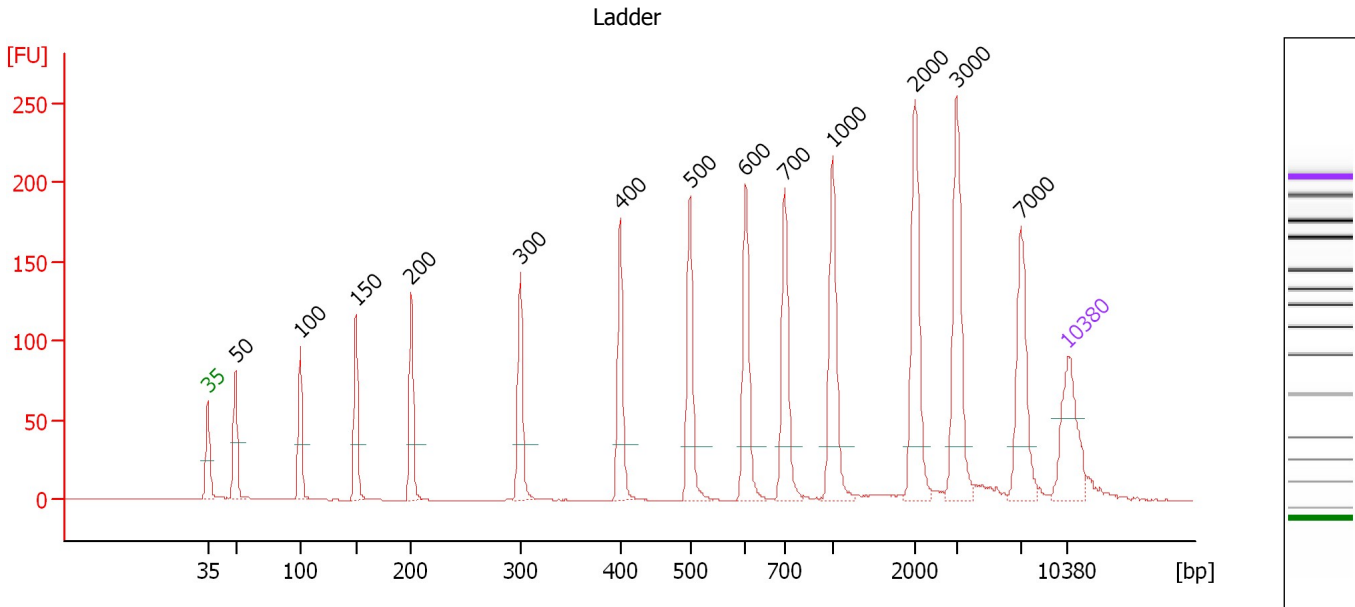
Ladder

Ladder Peak	Size	Area
1	35	160
2	50	210
3	100	208
4	150	221
5	200	242
6	300	270
7	400	305
8	500	306
9	600	336
10	700	321
11	1000	366
12	2000	413
13	3000	411
14	7000	400
15	10380	214

Assay Class: High Sensitivity DNA Assay
 Data Path: C:\...ents and Settings\Bioanalyzer\2012-04-26\2012-04-26_001.xad

Created: 4/26/2012 9:51:01 AM
 Modified: 4/26/2012 10:39:21 AM

Electropherogram Summary



Overall Results for Ladder

Noise: 0.1

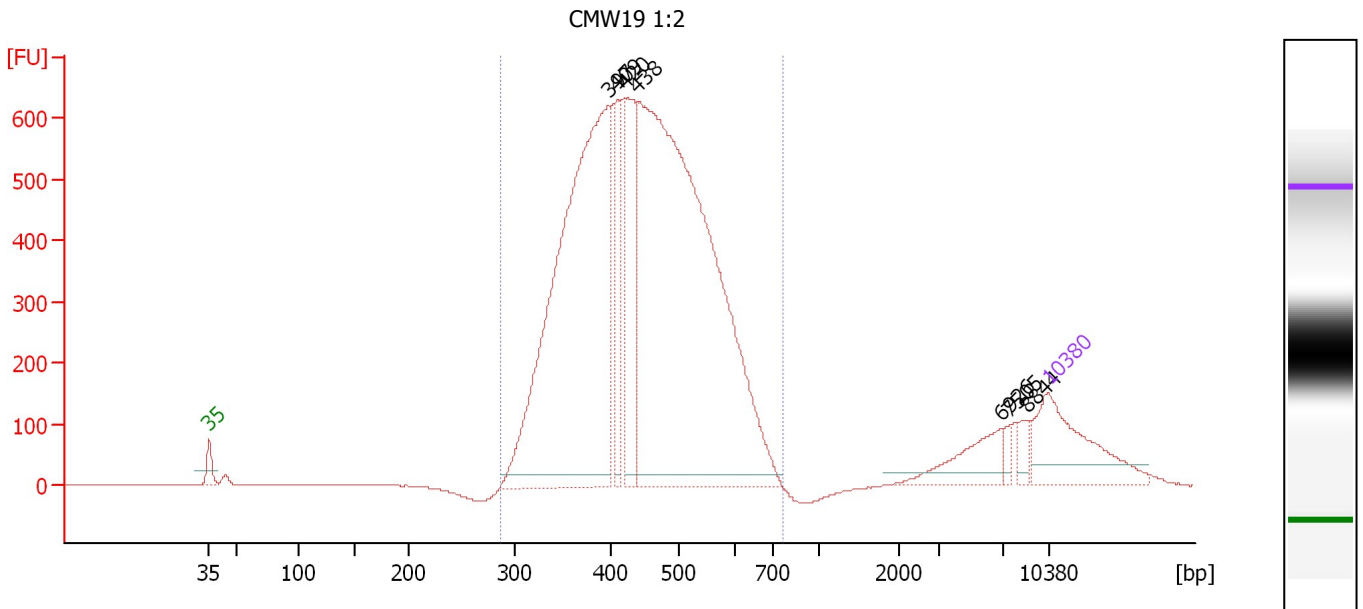
Peak table for Ladder

Peak	Size [bp]	Conc. [pg/μl]	Molarity [pmol/l]	Observations
1	35	125.00	5,411.3	Lower Marker
2	50	150.00	4,545.5	Ladder Peak
3	100	150.00	2,272.7	Ladder Peak
4	150	150.00	1,515.2	Ladder Peak
5	200	150.00	1,136.4	Ladder Peak
6	300	150.00	757.6	Ladder Peak
7	400	150.00	568.2	Ladder Peak
8	500	150.00	454.5	Ladder Peak
9	600	150.00	378.8	Ladder Peak
10	700	150.00	324.7	Ladder Peak
11	1,000	150.00	227.3	Ladder Peak
12	2,000	150.00	113.6	Ladder Peak
13	3,000	150.00	75.8	Ladder Peak
14	7,000	150.00	32.5	Ladder Peak
15	10,380	75.00	10.9	Upper Marker

Assay Class: High Sensitivity DNA Assay
 Data Path: C:\...ents and Settings\Bioanalyzer\2012-04-26\2012-04-26_001.xad

Created: 4/26/2012 9:51:01 AM
 Modified: 4/26/2012 10:39:21 AM

Electropherogram Summary Continued ...



Setpoint Deviations for sample 1 : CMW19 1:2

Height Threshold [FU] : 20

Overall Results for sample 1 : CMW19 1:2

Number of peaks found: 7 Corr. Area 1: 11,738.4
 Noise: 0.1

Peak table for sample 1 : CMW19 1:2

Peak	Size [bp]	Conc. [pg/μl]	Molarity [pmol/l]	Observations
1	35	125.00	5,411.3	Lower Marker
2	397	676.41	2,582.8	
3	409	77.43	287.0	
4	420	136.24	491.8	
5	438	933.31	3,225.0	
6	6,926	44.22	9.7	
7	7,505	6.60	1.3	
8	8,844	10.40	1.8	
9	10,380	75.00	10.9	Upper Marker

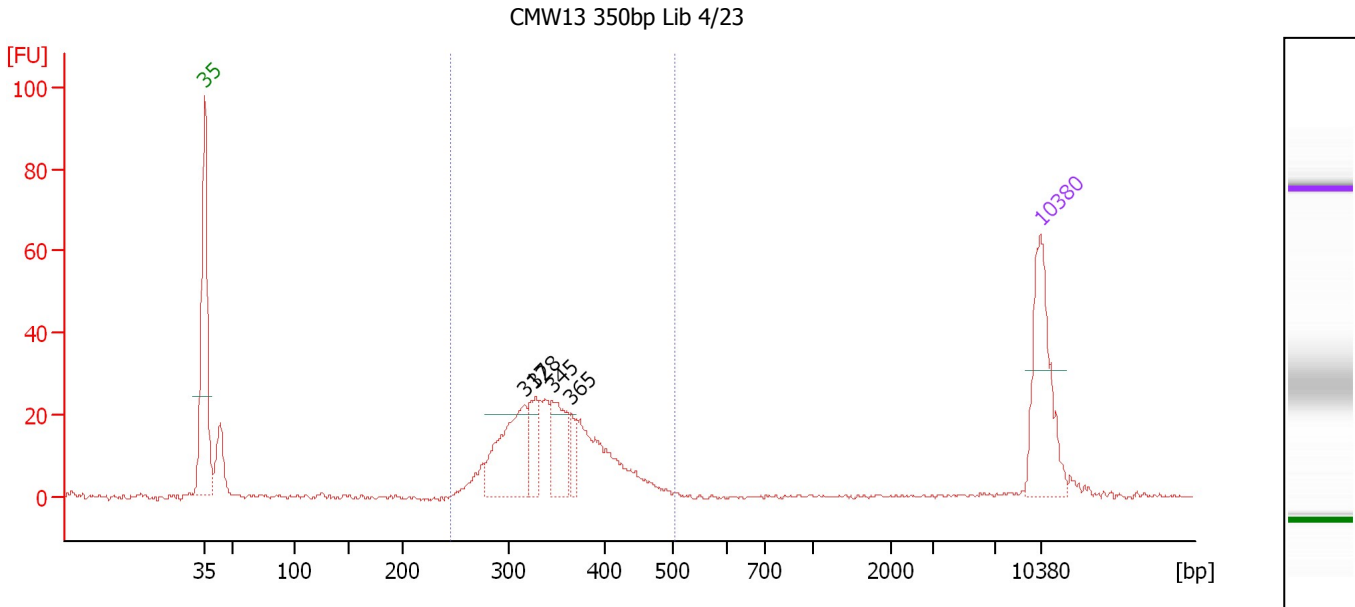
Region table for sample 1 : CMW19 1:2

From [bp]	Molarity [pmol/l]	Average Size [bp]	Conc. [pg/μl]	To [bp]	Corr. Area	% of Total	Size distribution in CV [%]	Color
288	6,579.2	449	1,861.80	765	11,738.4	95	18.8	Blue

Assay Class: High Sensitivity DNA Assay
 Data Path: C:\...ents and Settings\Bioanalyzer\2012-04-26\2012-04-26_001.xad

Created: 4/26/2012 9:51:01 AM
 Modified: 4/26/2012 10:39:21 AM

Electropherogram Summary Continued ...



Setpoint Deviations for sample 2 : CMW13 350bp Lib 4/23

Height Threshold [FU] : 20

Overall Results for sample 2 : CMW13 350bp Lib 4/23

Number of peaks found: 4 Corr. Area 1: 321.5
 Noise: 0.4

Peak table for sample 2 : CMW13 350bp Lib 4/23

Peak	Size [bp]	Conc. [pg/μl]	Molarity [pmol/l]	Observations
1	35	125.00	5,411.3	Lower Marker
2	317	104.14	498.2	
3	328	36.31	167.9	
4	345	55.86	245.5	
5	365	19.44	80.7	
6	10,380	75.00	10.9	Upper Marker

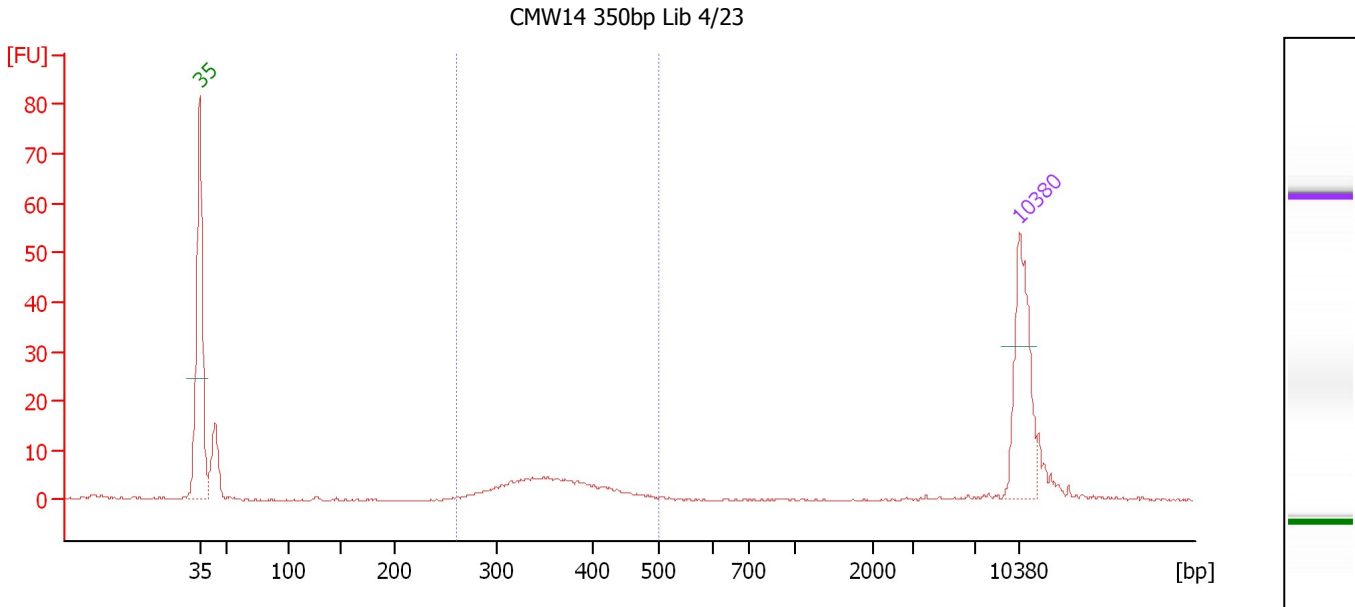
Region table for sample 2 : CMW13 350bp Lib 4/23

From [bp]	Molarity [pmol/l]	Average Size [bp]	Conc. [pg/μl]	To [bp]	Corr. Area	% of Total	Size distribution in CV [%]	Color
245	1,671.5	348	375.56	503	321.5	87	13.5	Blue

Assay Class: High Sensitivity DNA Assay
 Data Path: C:\...ents and Settings\Bioanalyzer\2012-04-26\2012-04-26_001.xad

Created: 4/26/2012 9:51:01 AM
 Modified: 4/26/2012 10:39:21 AM

Electropherogram Summary Continued ...



Setpoint Deviations for sample 3 : CMW14 350bp Lib 4/23

Height Threshold [FU] : 20

Overall Results for sample 3 : CMW14 350bp Lib 4/23

Number of peaks found: 0 Corr. Area 1: 58.0
 Noise: 0.2

Peak table for sample 3 : CMW14 350bp Lib 4/23

Peak	Size [bp]	Conc. [pg/μl]	Molarity [pmol/l]	Observations
1	35	125.00	5,411.3	Lower Marker
2	10,380	75.00	10.9	Upper Marker

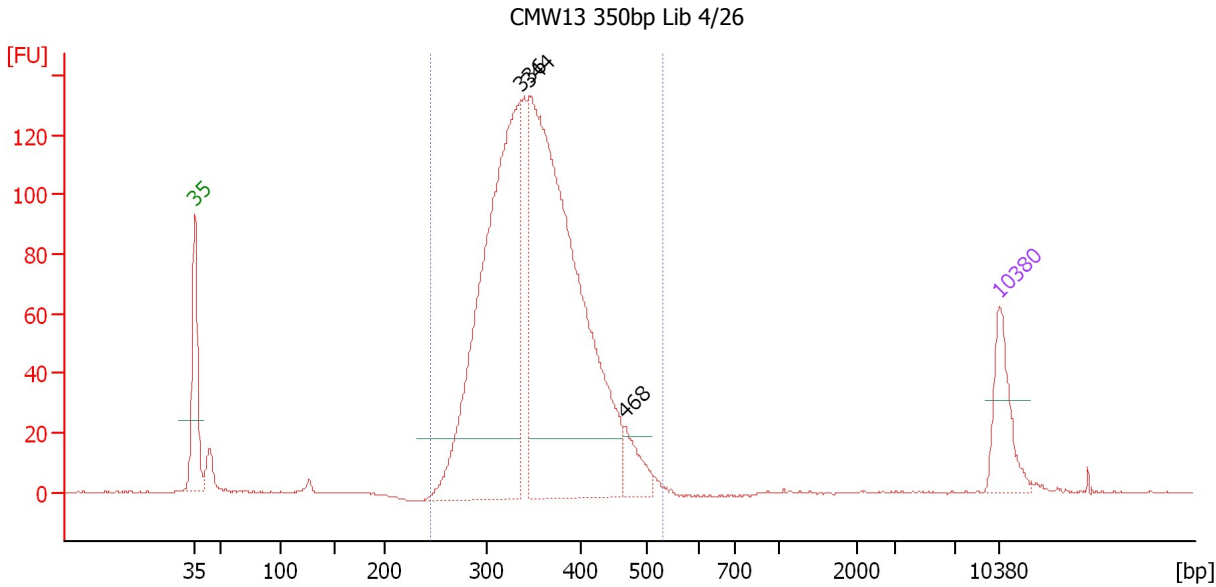
Region table for sample 3 : CMW14 350bp Lib 4/23

From [bp]	Molarity [pmol/l]	Average Size [bp]	Conc. [pg/μl]	To [bp]	Corr. Area	% of Total	Size distribution in CV [%]	Color
260	387.4	361	90.32	500	58.0	55	13.4	Blue

Assay Class: High Sensitivity DNA Assay
 Data Path: C:\...ents and Settings\Bioanalyzer\2012-04-26\2012-04-26_001.xad

Created: 4/26/2012 9:51:01 AM
 Modified: 4/26/2012 10:39:21 AM

Electropherogram Summary Continued ...



Setpoint Deviations for sample 4 : CMW13 350bp Lib 4/26

Height Threshold [FU] : 20

Overall Results for sample 4 : CMW13 350bp Lib 4/26

Number of peaks found: 3 Corr. Area 1: 1,771.8
 Noise: 0.1

Peak table for sample 4 : CMW13 350bp Lib 4/26

Peak	Size [bp]	Conc. [pg/μl]	Molarity [pmol/l]	Observations
1	35	125.00	5,411.3	Lower Marker
2	336	929.65	4,193.6	
3	344	1,175.44	5,170.3	
4	468	56.62	183.5	
5	10,380	75.00	10.9	Upper Marker

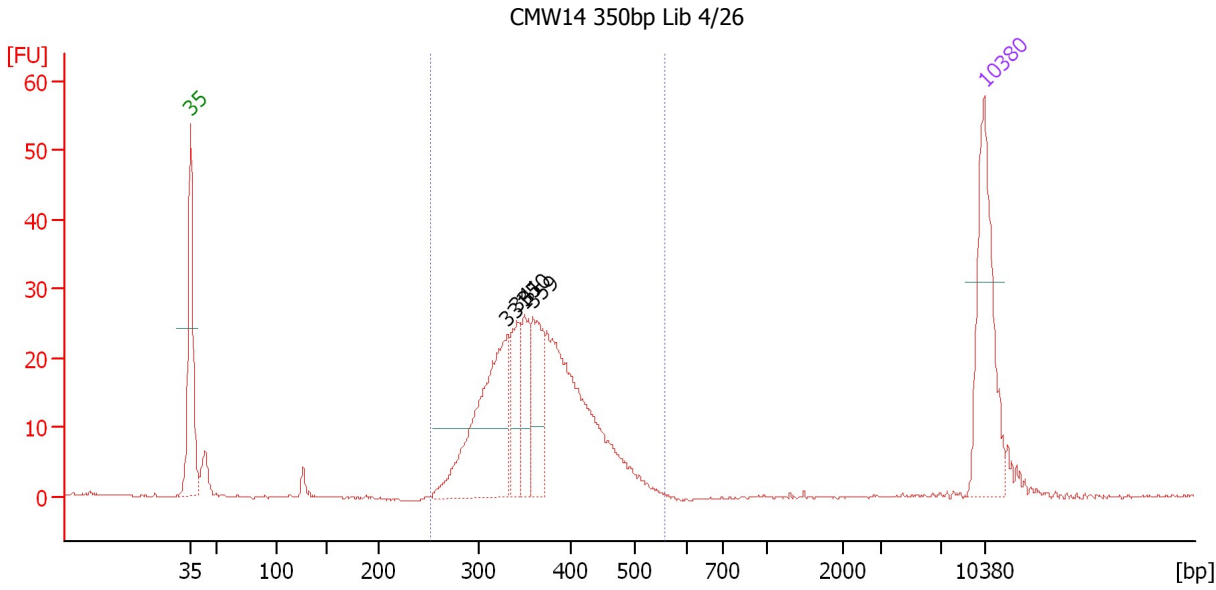
Region table for sample 4 : CMW13 350bp Lib 4/26

From [bp]	Molarity [pmol/l]	Average Size [bp]	Conc. [pg/μl]	To [bp]	Corr. Area	% of Total	Size distribution in CV [%]	Color
244	9,628.1	354	2,202.09	531	1,771.8	98	13.8	Blue

Assay Class: High Sensitivity DNA Assay
 Data Path: C:\...ents and Settings\Bioanalyzer\2012-04-26\2012-04-26_001.xad

Created: 4/26/2012 9:51:01 AM
 Modified: 4/26/2012 10:39:21 AM

Electropherogram Summary Continued ...



Setpoint Deviations for sample 5 : CMW14 350bp Lib 4/26

Height Threshold [FU] : 10

Overall Results for sample 5 : CMW14 350bp Lib 4/26

Number of peaks found: 4 Corr. Area 1: 353.3
 Noise: 0.2

Peak table for sample 5 : CMW14 350bp Lib 4/26

Peak	Size [bp]	Conc. [pg/μl]	Molarity [pmol/l]	Observations
1	35	125.00	5,411.3	Lower Marker
2	331	154.82	708.8	
3	341	46.49	206.3	
4	350	40.26	174.5	
5	359	60.57	255.8	
6	10,380	75.00	10.9	Upper Marker

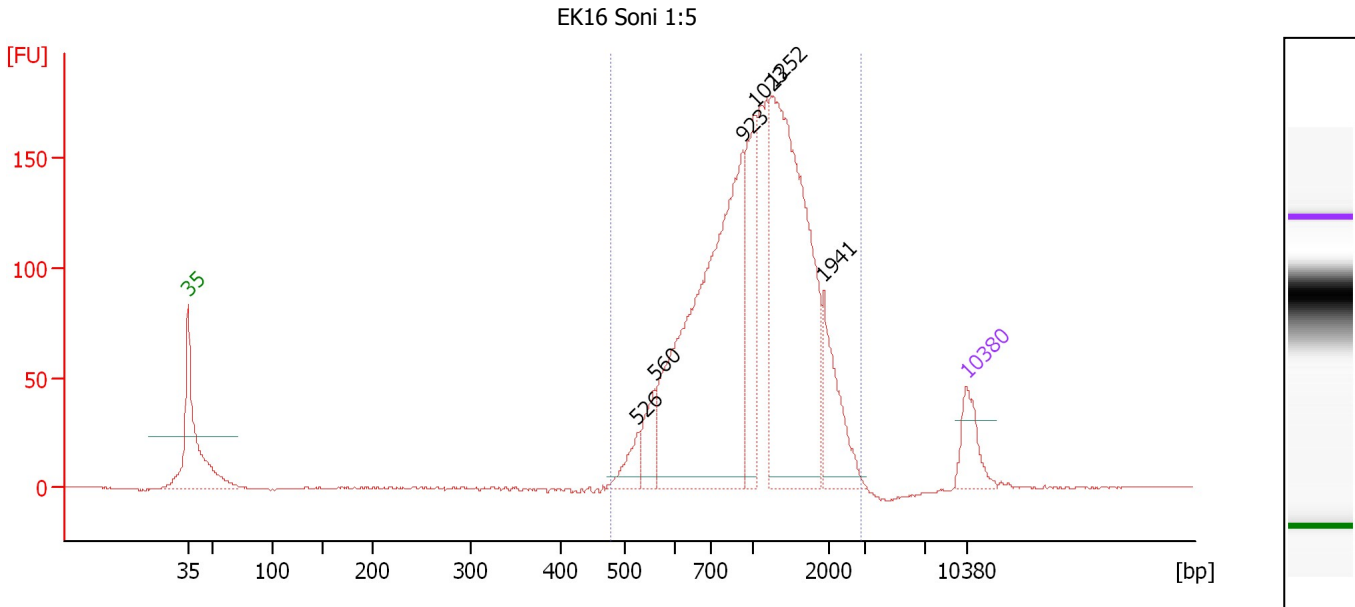
Region table for sample 5 : CMW14 350bp Lib 4/26

From [bp]	Molarity [pmol/l]	Average Size [bp]	Conc. [pg/μl]	To [bp]	Corr. Area	% of Total	Size distribution in CV [%]	Color
252	2,075.4	366	489.27	558	353.3	94	14.3	Blue

Assay Class: High Sensitivity DNA Assay
 Data Path: C:\...ents and Settings\Bioanalyzer\2012-04-26\2012-04-26_001.xad

Created: 4/26/2012 9:51:01 AM
 Modified: 4/26/2012 10:39:21 AM

Electropherogram Summary Continued ...



Overall Results for sample 6 : EK16 Soni 1:5

Number of peaks found: 6 Corr. Area 1: 2,199.5
 Noise: 0.2

Peak table for sample 6 : EK16 Soni 1:5

Peak	Size [bp]	Conc. [pg/μl]	Molarity [pmol/l]	Observations
1	35	125.00	5,411.3	Lower Marker
2	526	68.33	196.8	
3	560	88.33	239.1	
4	923	1,090.40	1,789.4	
5	1,023	257.29	381.2	
6	1,252	889.64	1,076.4	
7	1,941	166.08	129.6	
8	10,380	75.00	10.9	Upper Marker

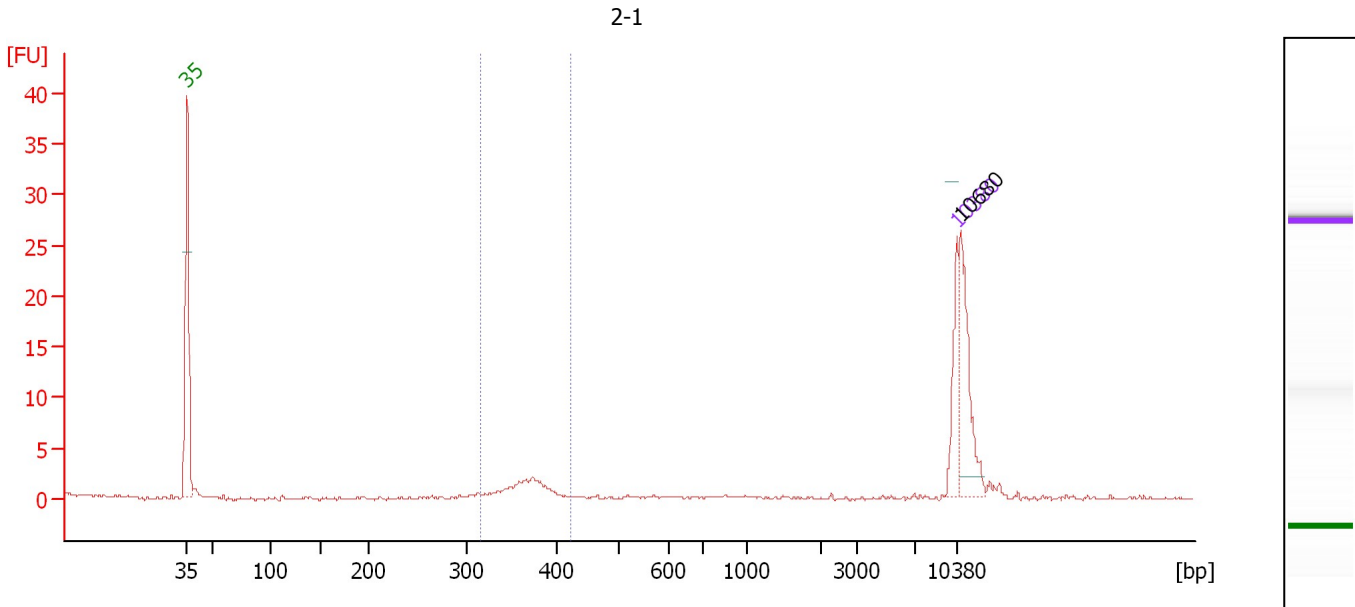
Region table for sample 6 : EK16 Soni 1:5

From [bp]	Molarity [pmol/l]	Average Size [bp]	Conc. [pg/μl]	To [bp]	Corr. Area	% of Total	Size distribution in CV [%]	Color
479	4,571.8	1,151	2,856.04	2,892	2,199.5	100	41.3	Blue

Assay Class: High Sensitivity DNA Assay
 Data Path: C:\...ents and Settings\Bioanalyzer\2012-04-26\2012-04-26_001.xad

Created: 4/26/2012 9:51:01 AM
 Modified: 4/26/2012 10:39:21 AM

Electropherogram Summary Continued ...



Setpoint Deviations for sample 7 : 2-1

Height Threshold [FU] : 2

Overall Results for sample 7 : 2-1

Number of peaks found: 1 Corr. Area 1: 8.3
 Noise: 0.2

Peak table for sample 7 : 2-1

Peak	Size [bp]	Conc. [pg/μl]	Molarity [pmol/l]	Observations
1	35	125.00	5,411.3	Lower Marker
2	10,380	75.00	10.9	Upper Marker
3	10,680	0.00	0.0	

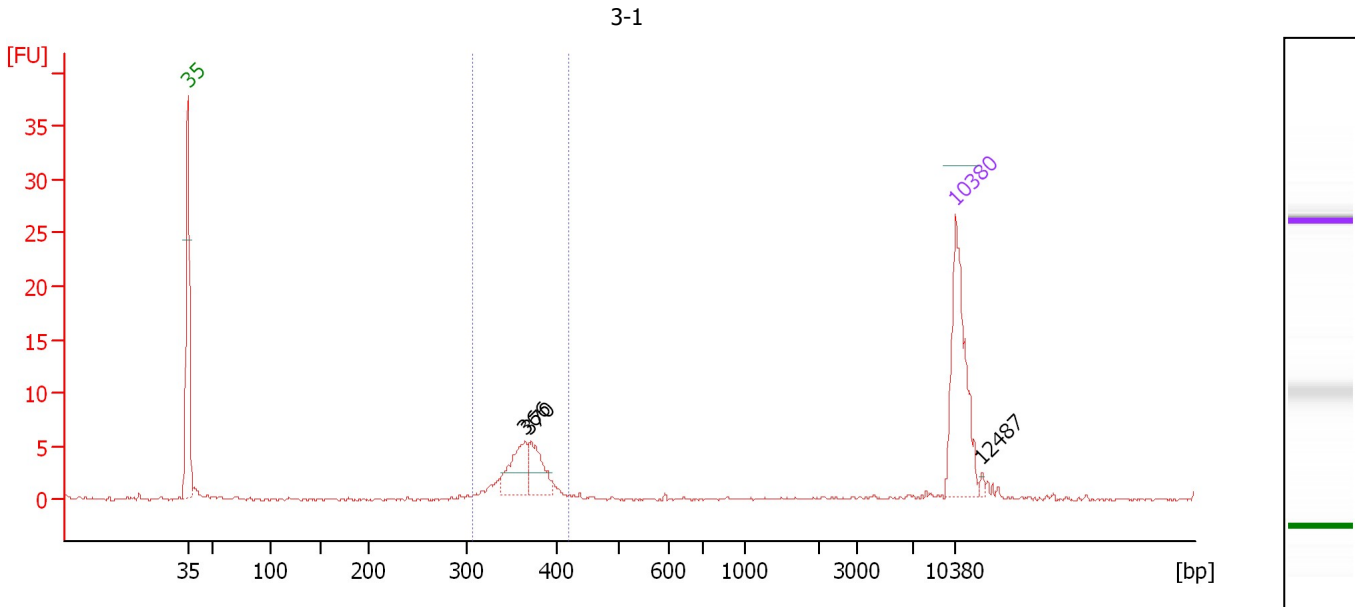
Region table for sample 7 : 2-1

From [bp]	Molarity [pmol/l]	Average Size [bp]	Conc. [pg/μl]	To [bp]	Corr. Area	% of Total	Size distribution in CV [%]	Color
317	273.2	366	66.06	423	8.3	23	5.1	Blue

Assay Class: High Sensitivity DNA Assay
 Data Path: C:\...ents and Settings\Bioanalyzer\2012-04-26\2012-04-26_001.xad

Created: 4/26/2012 9:51:01 AM
 Modified: 4/26/2012 10:39:21 AM

Electropherogram Summary Continued ...



Setpoint Deviations for sample 8 : 3-1

Height Threshold [FU] : 2

Overall Results for sample 8 : 3-1

Number of peaks found: 3 Corr. Area 1: 29.7
 Noise: 0.1

Peak table for sample 8 : 3-1

Peak	Size [bp]	Conc. [pg/μl]	Molarity [pmol/l]	Observations
1	35	125.00	5,411.3	Lower Marker
2	366	40.60	168.3	
3	370	31.79	130.1	
4	10,380	75.00	10.9	Upper Marker
5	12,487	0.00	0.0	

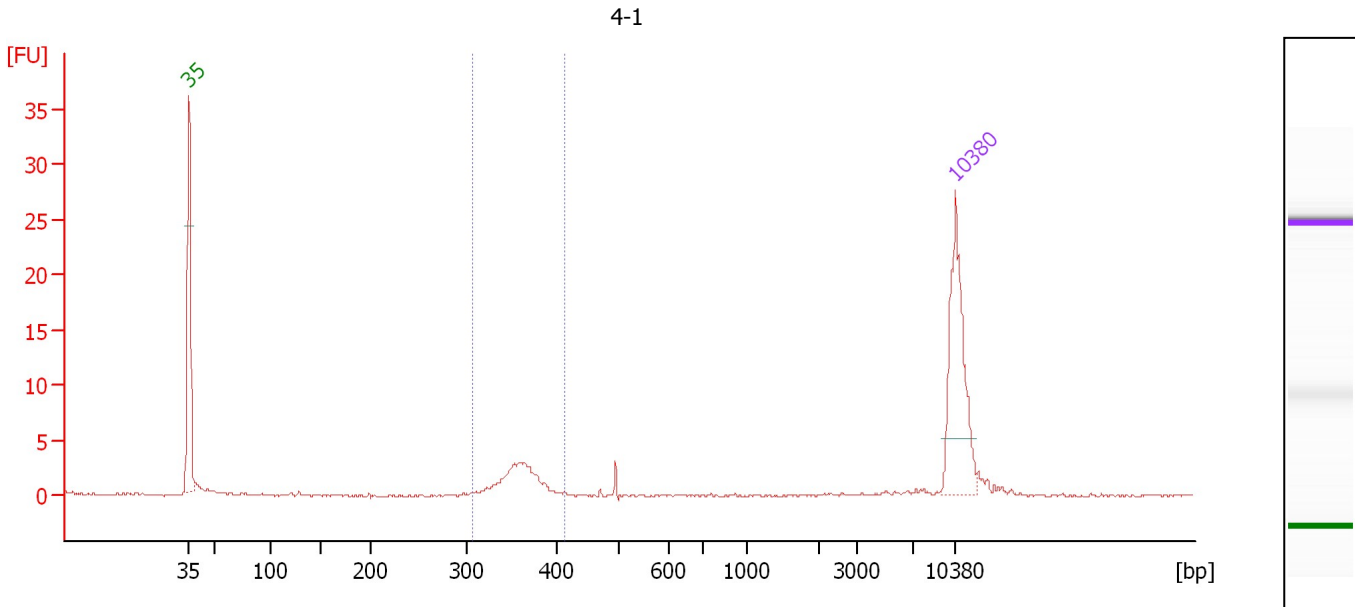
Region table for sample 8 : 3-1

From [bp]	Molarity [pmol/l]	Average Size [bp]	Conc. [pg/μl]	To [bp]	Corr. Area	% of Total	Size distribution in CV [%]	Color
306	411.1	364	98.77	420	29.7	76	5.7	Blue

Assay Class: High Sensitivity DNA Assay
 Data Path: C:\...ents and Settings\Bioanalyzer\2012-04-26\2012-04-26_001.xad

Created: 4/26/2012 9:51:01 AM
 Modified: 4/26/2012 10:39:21 AM

Electropherogram Summary Continued ...



Overall Results for sample 9 : 4-1

Number of peaks found: 0 Corr. Area 1: 14.0
 Noise: 0.1

Peak table for sample 9 : 4-1

Peak	Size [bp]	Conc. [pg/μl]	Molarity [pmol/l]	Observations
1	35	125.00	5,411.3	Lower Marker
2	10,380	75.00	10.9	Upper Marker

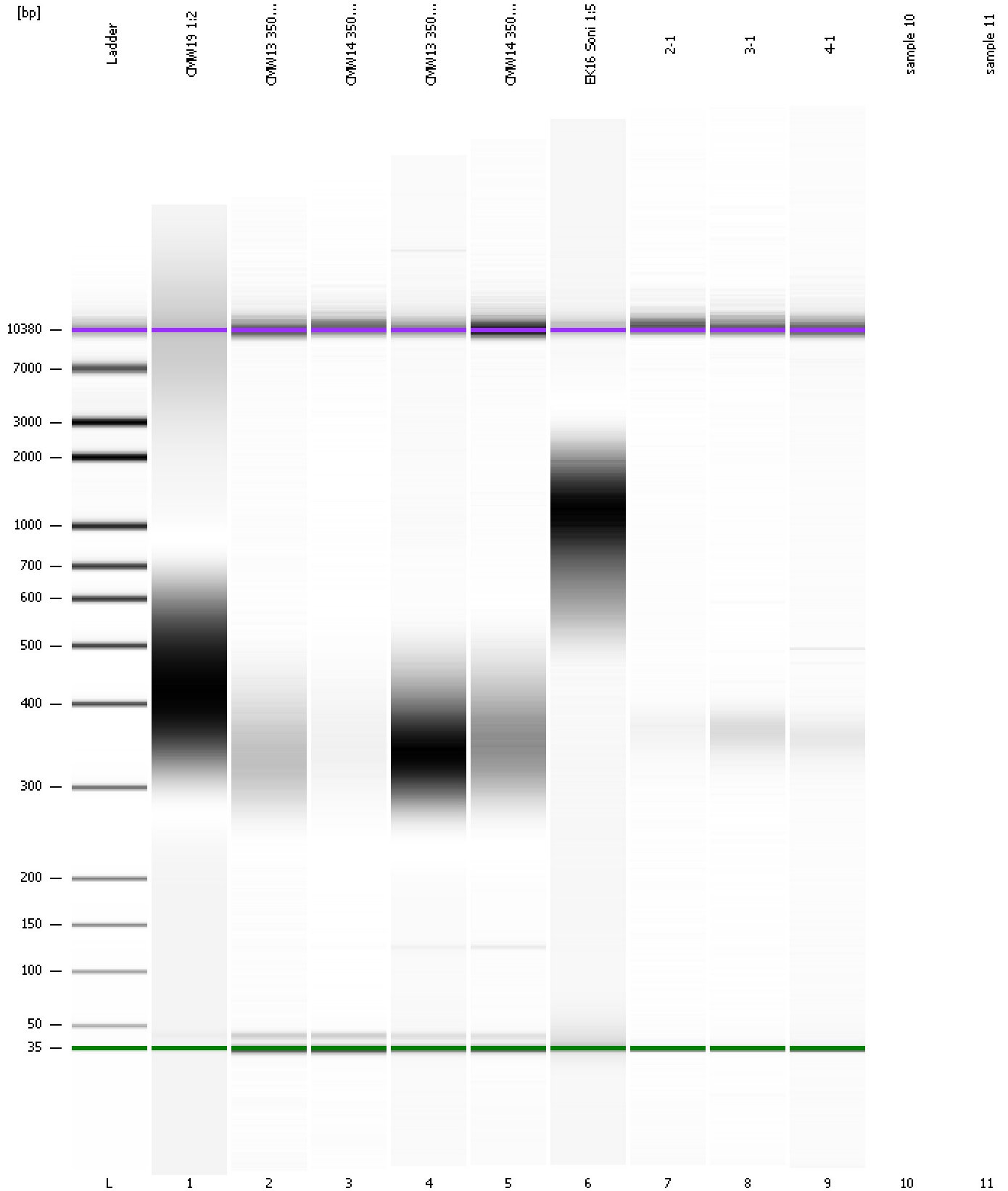
Region table for sample 9 : 4-1

From [bp]	Molarity [pmol/l]	Average Size [bp]	Conc. [pg/μl]	To [bp]	Corr. Area	% of Total	Size distribution in CV [%]	Color
305	194.0	359	45.89	414	14.0	66	5.2	Blue

Assay Class: High Sensitivity DNA Assay
Data Path: C:\...ents and Settings\Bioanalyzer\2012-04-26\2012-04-26_001.xad

Created: 4/26/2012 9:51:01 AM
Modified: 4/26/2012 10:39:21 AM

Gel Image



Assay Class: High Sensitivity DNA Assay
Data Path: C:\...ents and Settings\Bioanalyzer\2012-04-26\2012-04-26_001.xad

Created: 4/26/2012 9:51:01 AM
Modified: 4/26/2012 10:39:21 AM

Invalid Samples

Sample 10 has not been run, no results available.

Sample 11 has not been run, no results available.

Assay Class: High Sensitivity DNA Assay
 Data Path: C:\...ents and Settings\Bioanalyzer\2012-04-26\2012-04-26_001.xad

Created: 4/26/2012 9:51:01 AM
 Modified: 4/26/2012 10:39:21 AM

Run Logbook

Description	Number	Source	Category	Sub Category	Time	Time Zone	User	Host
Run ended on port 1 (Number of wells acquired: 10)		Instrument	Run		4/26/2012 10:26:36 AM	(GMT --07:00) Pacific Standard Time	UC Davis	D8XSMGH1
Run started on port 1 (File: C:\Documents and Settings\Bioanalyzer\2012-04-26\2012-04-26_001.xad)		Instrument	Run		4/26/2012 9:51:06 AM	(GMT --07:00) Pacific Standard Time	UC Davis	D8XSMGH1
Product Number : G2938B		Instrument	Run		4/26/2012 9:51:06 AM	(GMT --07:00) Pacific Standard Time	UC Davis	D8XSMGH1
Name :		Instrument	Run		4/26/2012 9:51:06 AM	(GMT --07:00) Pacific Standard Time	UC Davis	D8XSMGH1
Vendor : Agilent Technologies		Instrument	Run		4/26/2012 9:51:06 AM	(GMT --07:00) Pacific Standard Time	UC Davis	D8XSMGH1
Serial# : DE13701086		Instrument	Run		4/26/2012 9:51:06 AM	(GMT --07:00) Pacific Standard Time	UC Davis	D8XSMGH1
Firmware : C.01.069		Instrument	Run		4/26/2012 9:51:06 AM	(GMT --07:00) Pacific Standard Time	UC Davis	D8XSMGH1
Cartridge : Electrode		Instrument	Run		4/26/2012 9:51:06 AM	(GMT --07:00) Pacific Standard Time	UC Davis	D8XSMGH1