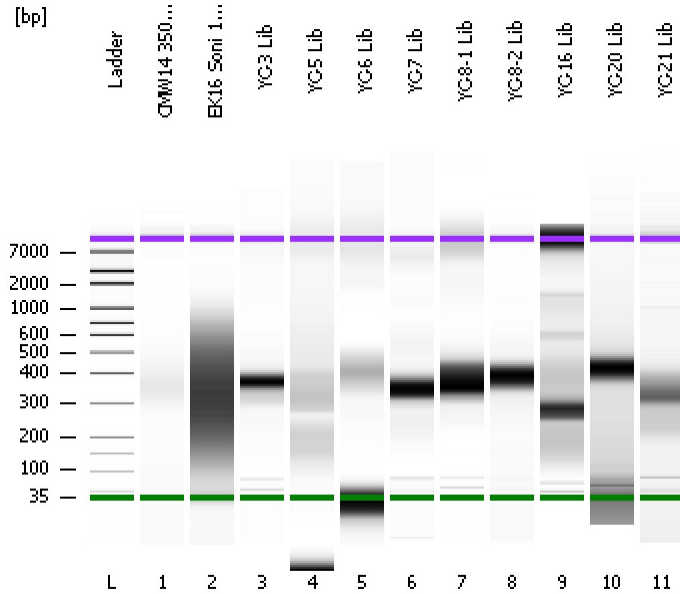


Assay Class: High Sensitivity DNA Assay
Data Path: C:\...ents and Settings\Bioanalyzer\2012-04-26\2012-04-26_003.xad

Created: 4/26/2012 4:11:08 PM
Modified: 4/26/2012 5:11:24 PM

Electrophoresis File Run Summary



Instrument Information:

Instrument Name: DE13701086 Firmware: C.01.069
Serial#: DE13701086 Type: G2938B

Assay Information:

Assay Origin Path: C:\Program Files\Agilent\2100 bioanalyzer\2100 expert\assays\dsDNA\High Sensitivity DNA.xsy
Assay Class: High Sensitivity DNA Assay
Version: 1.03
Assay Comments: Copyright © 2003-2010 Agilent Technologies

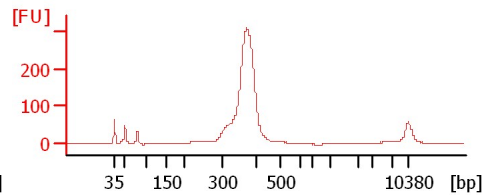
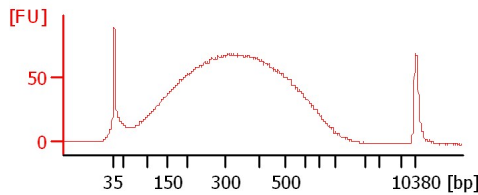
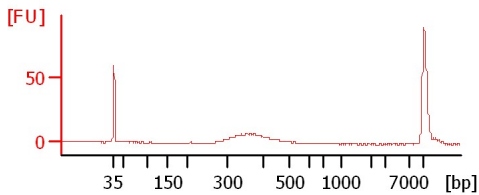
Chip Information:

Chip Lot #:
Reagent Kit Lot #:
Chip Comments:

CMW14 350bp Lib 4/26

EK16 Soni 14Cycles 1:5

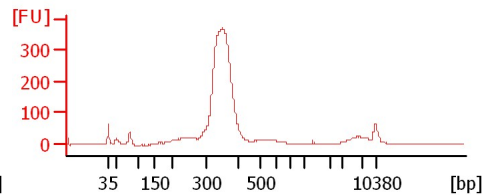
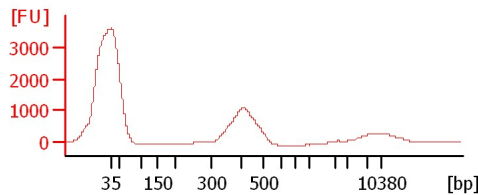
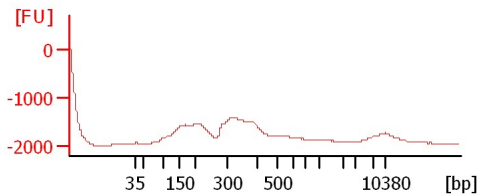
YC-3 Lib



YC-5 Lib

YC-6 Lib

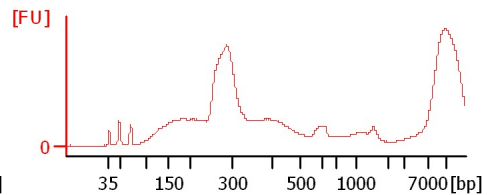
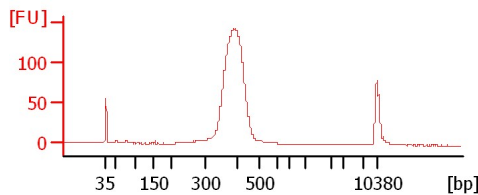
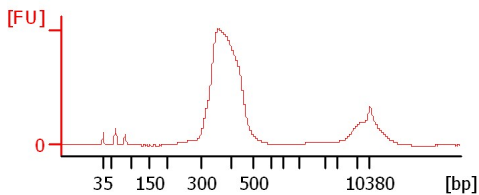
YC-7 Lib



YC-8-1 Lib

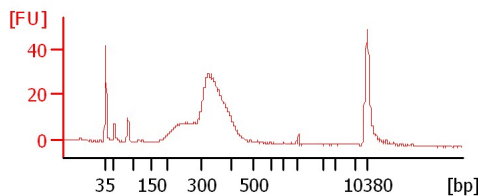
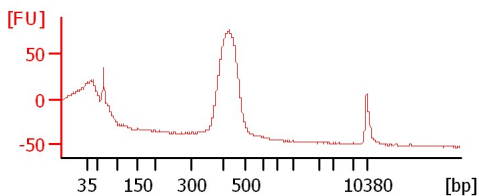
YC-8-2 Lib

YC-16 Lib



YC-20 Lib

YC-21 Lib



Assay Class: High Sensitivity DNA Assay
Data Path: C:\...ents and Settings\Bioanalyzer\2012-04-26\2012-04-26_003.xad

Created: 4/26/2012 4:11:08 PM
Modified: 4/26/2012 5:11:24 PM

Electrophoresis File Run Summary (Chip Summary)

Sample Name	Sample Comment	Rest. Digest	Status	Observation	Result Label	Result Color
CMW14 350bp Lib 4/26		<input type="checkbox"/>	✓			
EK16 Soni 14Cycles 1:5		<input type="checkbox"/>	✓			
YC-3 Lib		<input type="checkbox"/>	✓			
YC-5 Lib		<input type="checkbox"/>	✓			
YC-6 Lib		<input type="checkbox"/>	✓			
YC-7 Lib		<input type="checkbox"/>	✓			
YC-8-1 Lib		<input type="checkbox"/>	✓			
YC-8-2 Lib		<input type="checkbox"/>	✓			
YC-16 Lib		<input type="checkbox"/>	✓			
YC-20 Lib		<input type="checkbox"/>	✓			
YC-21 Lib		<input type="checkbox"/>	✓			
Ladder		<input type="checkbox"/>	✓			

Chip Lot #

Reagent Kit Lot #

Chip Comments :

Assay Class: High Sensitivity DNA Assay
Data Path: C:\...ents and Settings\Bioanalyzer\2012-04-26\2012-04-26_003.xad

Created: 4/26/2012 4:11:08 PM
Modified: 4/26/2012 5:11:24 PM

Electrophoresis Assay Details

General Analysis Settings

Number of Available Sample and Ladder Wells (Max.) : 12
Minimum Visible Range [s] : 32
Maximum Visible Range [s] : 138
Start Analysis Time Range [s] : 33
End Analysis Time Range [s] : 137.5
Ladder Concentration [pg/μl] : 1950
Uses Standard Area for Ladder Fragments
Lower Marker Concentration [pg/μl] : 125
Upper Marker Concentration [pg/μl] : 75
Used Upper Marker for Quantitation
Standard Curve Fit is Point to Point
Show Data Aligned to Lower and Upper Marker

Integrator Settings

Integration Start Time [s] : 33.05
Integration End Time [s] : 137
Slope Threshold : 0.8
Height Threshold [FU] : 5
Area Threshold : 0.1
Width Threshold [s] : 0.6
Baseline Plateau [s] : 0.5

Filter Settings

Filter Width [s] : 0.5
Polynomial Order : 4

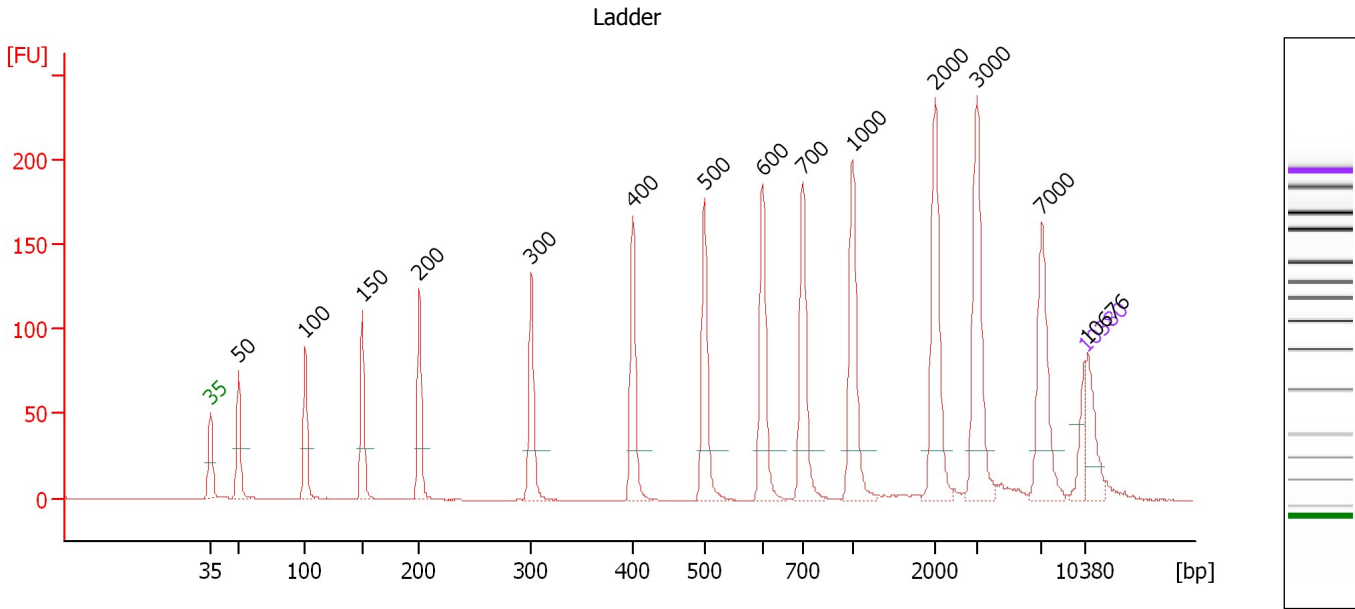
Ladder

Ladder Peak	Size	Area
1	35	160
2	50	210
3	100	208
4	150	221
5	200	242
6	300	270
7	400	305
8	500	306
9	600	336
10	700	321
11	1000	366
12	2000	413
13	3000	411
14	7000	400
15	10380	214

Assay Class: High Sensitivity DNA Assay
 Data Path: C:\...ents and Settings\Bioanalyzer\2012-04-26\2012-04-26_003.xad

Created: 4/26/2012 4:11:08 PM
 Modified: 4/26/2012 5:11:24 PM

Electropherogram Summary



Overall Results for Ladder

Noise: 0.2

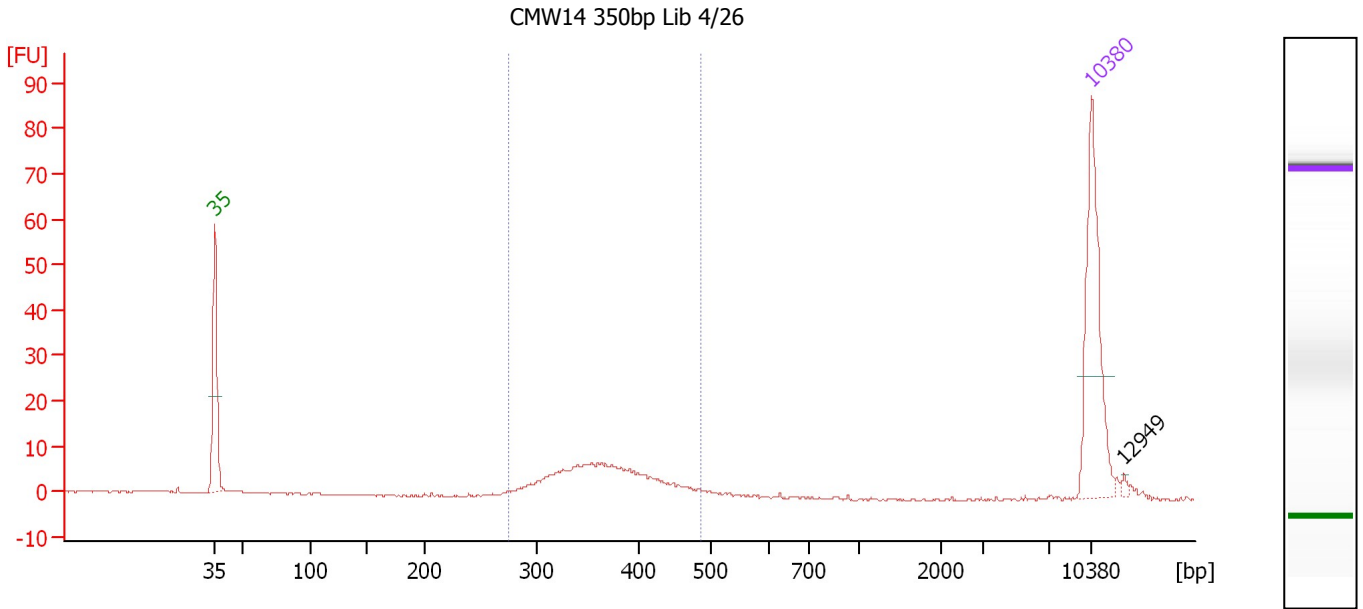
Peak table for Ladder

Peak	Size [bp]	Conc. [pg/μl]	Molarity [pmol/l]	Observations
1	35	125.00	5,411.3	Lower Marker
2	50	150.00	4,545.5	Ladder Peak
3	100	150.00	2,272.7	Ladder Peak
4	150	150.00	1,515.2	Ladder Peak
5	200	150.00	1,136.4	Ladder Peak
6	300	150.00	757.6	Ladder Peak
7	400	150.00	568.2	Ladder Peak
8	500	150.00	454.5	Ladder Peak
9	600	150.00	378.8	Ladder Peak
10	700	150.00	324.7	Ladder Peak
11	1,000	150.00	227.3	Ladder Peak
12	2,000	150.00	113.6	Ladder Peak
13	3,000	150.00	75.8	Ladder Peak
14	7,000	150.00	32.5	Ladder Peak
15	10,380	75.00	10.9	Upper Marker
16	10,676	0.00	0.0	

Assay Class: High Sensitivity DNA Assay
 Data Path: C:\...ents and Settings\Bioanalyzer\2012-04-26\2012-04-26_003.xad

Created: 4/26/2012 4:11:08 PM
 Modified: 4/26/2012 5:11:24 PM

Electropherogram Summary Continued ...



Overall Results for sample 1 : CMW14 350bp Lib 4/26

Number of peaks found: 1 Corr. Area 1: 83.4
 Noise: 0.2

Peak table for sample 1 : CMW14 350bp Lib 4/26

Peak	Size [bp]	Conc. [pg/μl]	Molarity [pmol/l]	Observations
1	35	125.00	5,411.3	Lower Marker
2	10,380	75.00	10.9	Upper Marker
3	12,949	0.00	0.0	

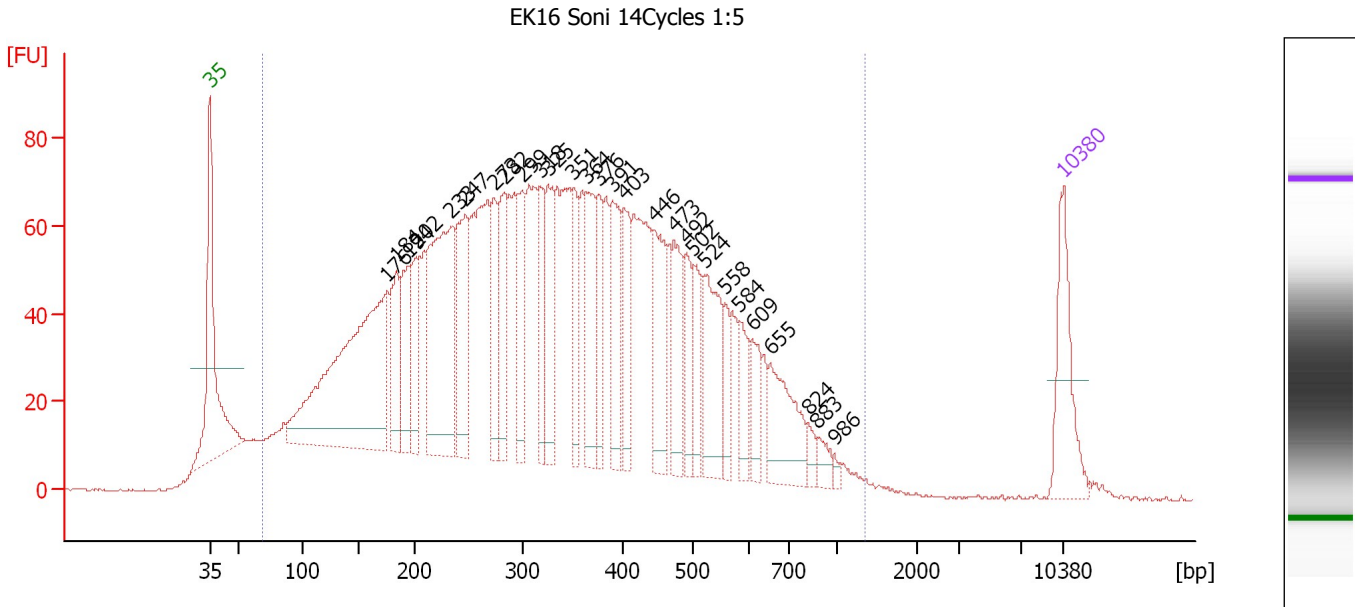
Region table for sample 1 : CMW14 350bp Lib 4/26

From [bp]	Molarity [pmol/l]	Average Size [bp]	Conc. [pg/μl]	To [bp]	Corr. Area	% of Total	Size distribution in CV [%]	Color
275	401.2	367	95.55	486	83.4	89	12.1	Blue

Assay Class: High Sensitivity DNA Assay
 Data Path: C:\...ents and Settings\Bioanalyzer\2012-04-26\2012-04-26_003.xad

Created: 4/26/2012 4:11:08 PM
 Modified: 4/26/2012 5:11:24 PM

Electropherogram Summary Continued ...



Overall Results for sample 2 : EK16 Soni 14Cycles 1:5

Number of peaks found: 28 Corr. Area 1: 3,347.4
 Noise: 0.2

Peak table for sample 2 : EK16 Soni 14Cycles 1:5

Peak	Size [bp]	Conc. [pg/μl]	Molarity [pmol/l]	Observations
1	35	125.00	5,411.3	Lower Marker
2	176	500.99	4,319.2	
3	184	98.93	813.0	
4	194	91.77	715.2	
5	202	89.91	674.0	
6	233	297.94	1,934.7	
7	247	138.14	847.4	
8	273	76.38	423.4	
9	282	99.81	536.1	
10	299	92.19	466.9	
11	318	72.88	347.3	
12	325	93.90	437.8	
13	351	67.27	290.5	
14	364	105.12	437.8	
15	376	67.55	272.5	
16	391	99.87	387.2	
17	403	73.65	276.9	
18	446	103.41	351.2	
19	473	82.46	263.9	
20	492	50.98	157.1	
21	502	51.37	155.1	
22	524	110.78	320.5	
23	558	31.70	86.1	
24	584	41.30	107.2	
25	609	36.36	90.5	
26	655	90.01	208.3	

Assay Class: High Sensitivity DNA Assay
 Data Path: C:\...ents and Settings\Bioanalyzer\2012-04-26\2012-04-26_003.xad


Created: 4/26/2012 4:11:08 PM
 Modified: 4/26/2012 5:11:24 PM

Electropherogram Summary Continued ...

... Peak table for sample 2 : EK16 Soni 14Cycles 1:5

Peak	Size [bp]	Conc. [pg/μl]	Molarity [pmol/l]	Observations
27	824	11.84	21.8	
28	883	14.96	25.7	
29	986	4.62	7.1	
30	10,380	75.00	10.9	Upper Marker

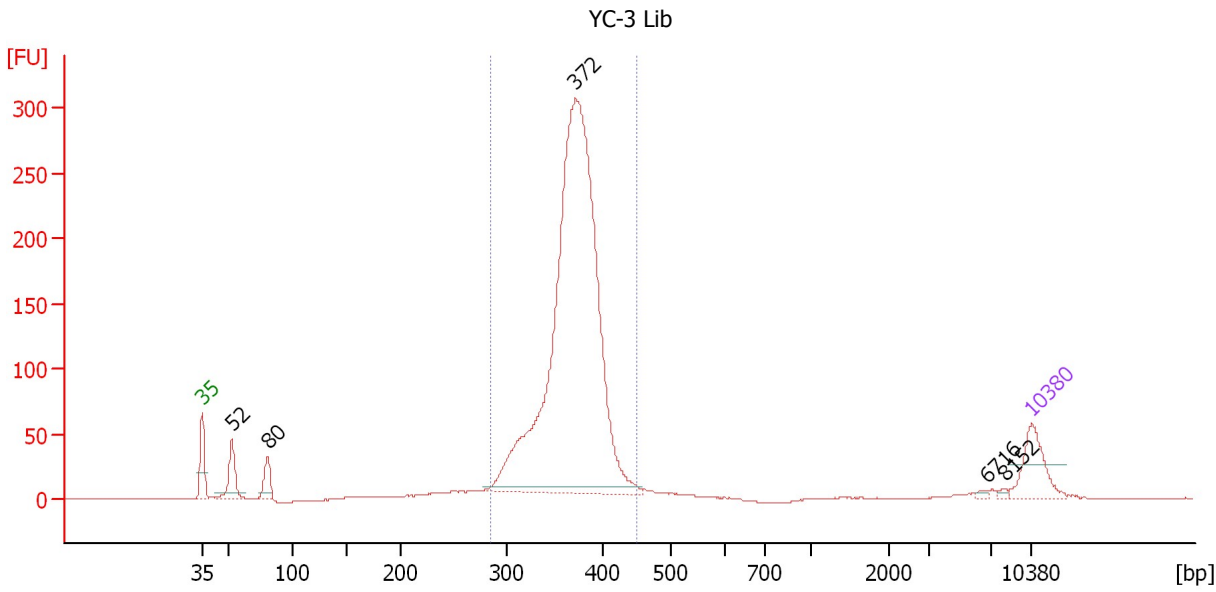
Region table for sample 2 : EK16 Soni 14Cycles 1:5

From [bp]	Molarity [pmol/l]	Average Size [bp]	Conc. [pg/μl]	To [bp]	Corr. Area	% of Total	Size distribution in CV [%]	Color
69	30,101.7	355	4,759.57	1,346	3,347.4	98	48.6	

Assay Class: High Sensitivity DNA Assay
 Data Path: C:\...ents and Settings\Bioanalyzer\2012-04-26\2012-04-26_003.xad

Created: 4/26/2012 4:11:08 PM
 Modified: 4/26/2012 5:11:24 PM

Electropherogram Summary Continued ...



Overall Results for sample 3 : YC-3 Lib

Number of peaks found: 5 Corr. Area 1: 1,885.4
 Noise: 0.2

Peak table for sample 3 : YC-3 Lib

Peak	Size [bp]	Conc. [pg/μl]	Molarity [pmol/l]	Observations
1	35	125.00	5,411.3	Lower Marker
2	52	98.01	2,855.6	
3	80	58.88	1,111.3	
4	372	1,820.29	7,419.4	
5	6,716	4.44	1.0	
6	8,152	4.68	0.9	
7	10,380	75.00	10.9	Upper Marker

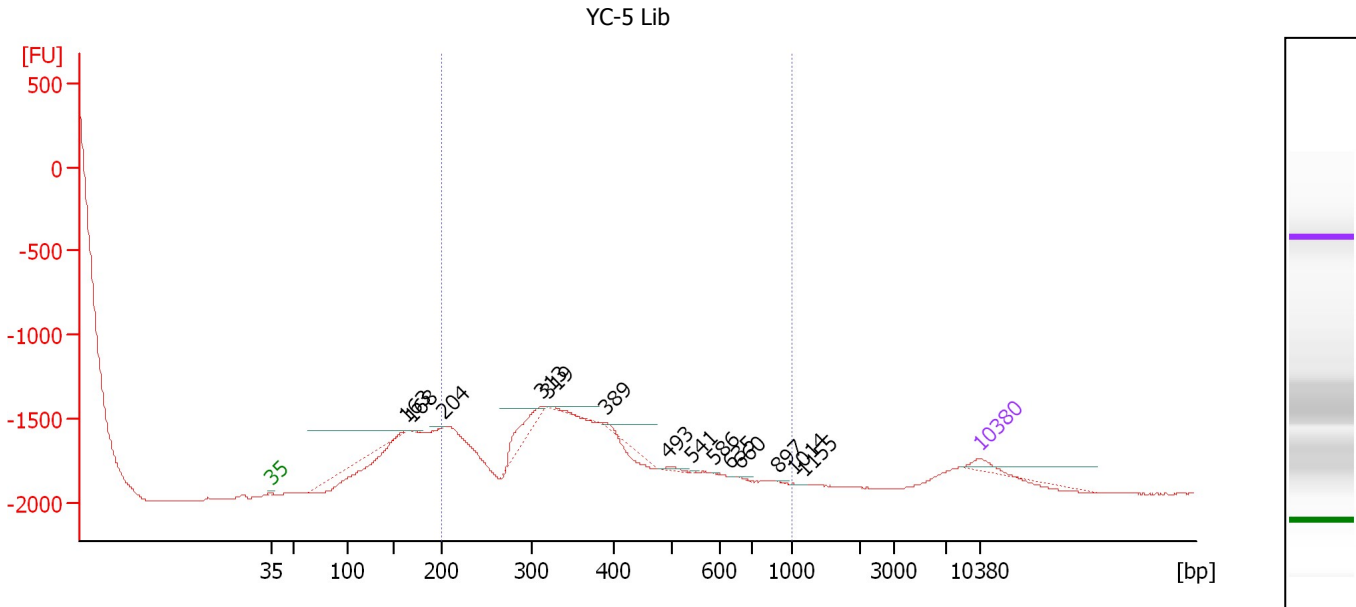
Region table for sample 3 : YC-3 Lib

From [bp]	Molarity [pmol/l]	Average Size [bp]	Conc. [pg/μl]	To [bp]	Corr. Area	% of Total	Size distribution in CV [%]	Color
285	7,920.7	368	1,915.02	450	1,885.4	88	7.4	Blue

Assay Class: High Sensitivity DNA Assay
 Data Path: C:\...ents and Settings\Bioanalyzer\2012-04-26\2012-04-26_003.xad

Created: 4/26/2012 4:11:08 PM
 Modified: 4/26/2012 5:11:24 PM

Electropherogram Summary Continued ...



Overall Results for sample 4 : YC-5 Lib

Number of peaks found: 14 Corr. Area 1: 0.0
 Noise: 1.0

Peak table for sample 4 : YC-5 Lib

Peak	Size [bp]	Conc. [pg/μl]	Molarity [pmol/l]	Observations
1	35	125.00	5,411.3	Lower Marker
2	163	22.59	210.2	
3	168	5.01	45.2	
4	204	8.89	66.1	
5	313	324.39	1,571.7	
6	319	20.03	95.1	
7	389	19.91	77.6	
8	493	25.10	77.1	
9	541	1.60	4.5	
10	586	0.93	2.4	
11	635	1.85	4.4	
12	660	1.68	3.8	
13	897	1.01	1.7	
14	1,014	1.24	1.8	
15	1,155	1.40	1.8	
16	10,380	75.00	10.9	Upper Marker

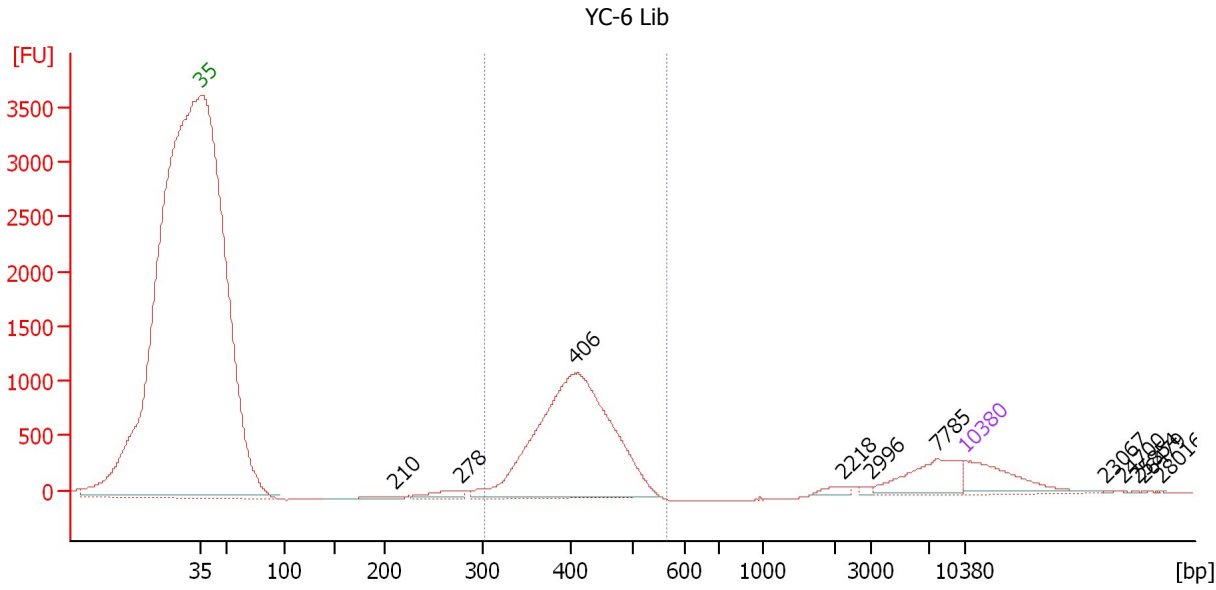
Region table for sample 4 : YC-5 Lib

From [bp]	Molarity [pmol/l]	Average Size [bp]	Conc. [pg/μl]	To [bp]	Corr. Area	% of Total	Size distribution in CV [%]	Color
200	0.0	0	0.00	1,000	0.0	0	0.0	Blue

Assay Class: High Sensitivity DNA Assay
 Data Path: C:\...ents and Settings\Bioanalyzer\2012-04-26\2012-04-26_003.xad

Created: 4/26/2012 4:11:08 PM
 Modified: 4/26/2012 5:11:24 PM

Electropherogram Summary Continued ...



Overall Results for sample 5 : YC-6 Lib

Number of peaks found: 11 Corr. Area 1: 10,465.2
 Noise: 1.0

Peak table for sample 5 : YC-6 Lib

Peak	Size [bp]	Conc. [pg/μl]	Molarity [pmol/l]	Observations
1	35	125.00	5,411.3	Lower Marker
2	210	16.26	117.0	
3	278	33.02	179.9	
4	406	863.47	3,218.7	
5	2,218	11.55	7.9	
6	2,996	5.24	2.7	
7	7,785	89.05	17.3	
8	10,380	75.00	10.9	Upper Marker
9	23,067	0.00	0.0	
10	24,701	0.00	0.0	
11	25,854	0.00	0.0	
12	26,479	0.00	0.0	
13	28,016	0.00	0.0	

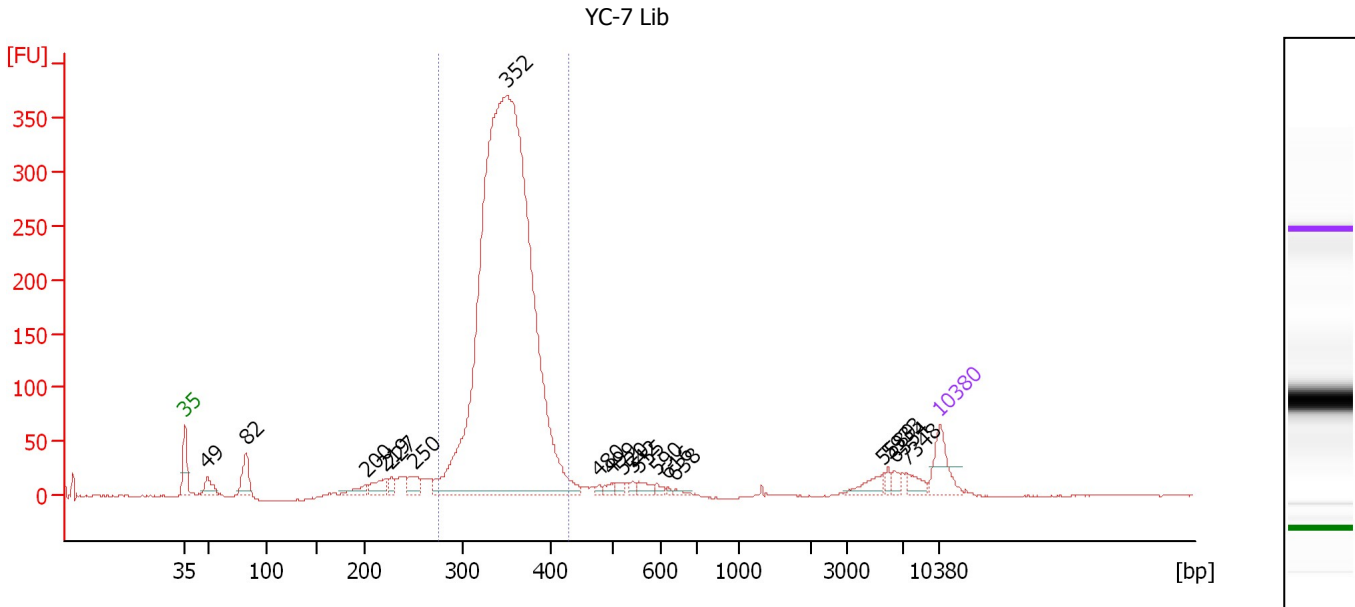
Region table for sample 5 : YC-6 Lib

From [bp]	Molarity [pmol/l]	Average Size [bp]	Conc. [pg/μl]	To [bp]	Corr. Area	% of Total	Size distribution in CV [%]	Color
303	2,881.5	412	773.68	568	10,465.2	86	10.8	Blue

Assay Class: High Sensitivity DNA Assay
 Data Path: C:\...ents and Settings\Bioanalyzer\2012-04-26\2012-04-26_003.xad

Created: 4/26/2012 4:11:08 PM
 Modified: 4/26/2012 5:11:24 PM

Electropherogram Summary Continued ...



Overall Results for sample 6 : YC-7 Lib

Number of peaks found: 19 Corr. Area 1: 2,782.4
 Noise: 0.5

Peak table for sample 6 : YC-7 Lib

Peak	Size [bp]	Conc. [pg/μl]	Molarity [pmol/l]	Observations
1	35	125.00	5,411.3	Lower Marker
2	49	62.44	1,940.2	
3	82	106.37	1,964.5	
4	200	37.93	287.1	
5	219	57.28	395.4	
6	227	25.33	169.3	
7	250	46.58	282.5	
8	352	3,791.87	16,334.5	
9	480	9.00	28.5	
10	499	16.50	50.1	
11	520	15.38	44.8	
12	542	11.42	31.9	
13	555	25.77	70.4	
14	590	12.21	31.4	
15	616	5.36	13.2	
16	638	9.05	21.5	
17	5,589	36.71	10.0	
18	5,933	12.89	3.3	
19	6,354	15.84	3.8	
20	7,348	28.16	5.8	
21	10,380	75.00	10.9	Upper Marker

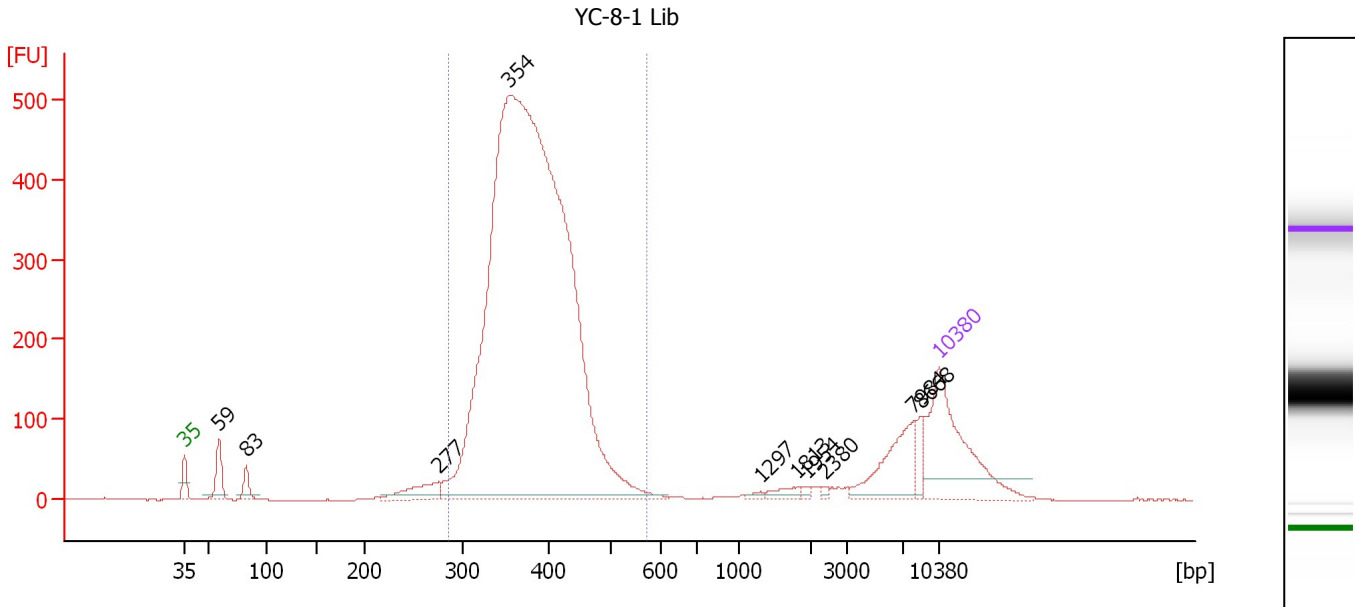
Region table for sample 6 : YC-7 Lib

From [bp]	Molarity [pmol/l]	Average Size [bp]	Conc. [pg/μl]	To [bp]	Corr. Area	% of Total	Size distribution in CV [%]	Color
275	15,994.3	350	3,685.34	432	2,782.4	89	7.4	Blue

Assay Class: High Sensitivity DNA Assay
 Data Path: C:\...ents and Settings\Bioanalyzer\2012-04-26\2012-04-26_003.xad

Created: 4/26/2012 4:11:08 PM
 Modified: 4/26/2012 5:11:24 PM

Electropherogram Summary Continued ...



Overall Results for sample 7 : YC-8-1 Lib

Number of peaks found: 10 Corr. Area 1: 5,788.4
 Noise: 0.3

Peak table for sample 7 : YC-8-1 Lib

Peak	Size [bp]	Conc. [pg/μl]	Molarity [pmol/l]	Observations
1	35	125.00	5,411.3	Lower Marker
2	59	28.51	733.5	
3	83	14.35	263.6	
4	277	25.46	139.4	
5	354	1,201.55	5,149.2	
6	1,297	1.58	1.8	
7	1,813	5.51	4.6	
8	1,954	1.82	1.4	
9	2,380	1.60	1.0	
10	7,984	40.77	7.7	
11	8,668	8.96	1.6	
12	10,380	75.00	10.9	Upper Marker

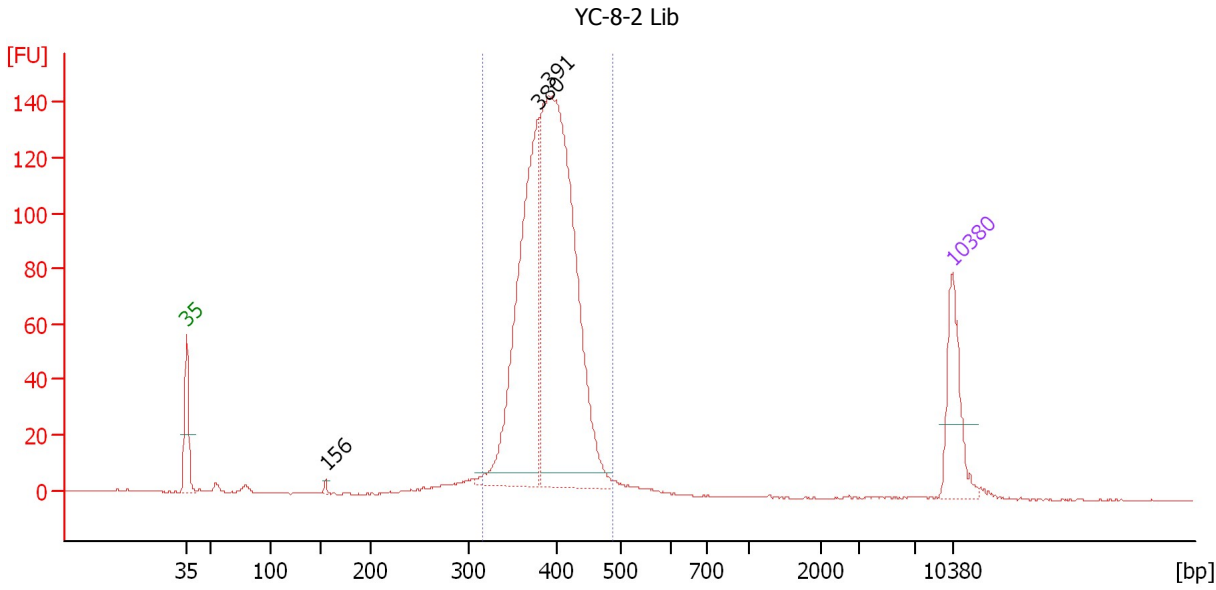
Region table for sample 7 : YC-8-1 Lib

From [bp]	Molarity [pmol/l]	Average Size [bp]	Conc. [pg/μl]	To [bp]	Corr. Area	% of Total	Size distribution in CV [%]	Color
287	4,591.5	383	1,144.49	572	5,788.4	87	11.9	Blue

Assay Class: High Sensitivity DNA Assay
 Data Path: C:\...ents and Settings\Bioanalyzer\2012-04-26\2012-04-26_003.xad

Created: 4/26/2012 4:11:08 PM
 Modified: 4/26/2012 5:11:24 PM

Electropherogram Summary Continued ...



Overall Results for sample 8 : YC-8-2 Lib

Number of peaks found: 3 Corr. Area 1: 1,123.8
 Noise: 0.2

Peak table for sample 8 : YC-8-2 Lib

Peak	Size [bp]	Conc. [pg/μl]	Molarity [pmol/l]	Observations
1	35	125.00	5,411.3	Lower Marker
2	156	3.82	37.2	
3	380	440.95	1,758.4	
4	391	738.66	2,864.1	
5	10,380	75.00	10.9	Upper Marker

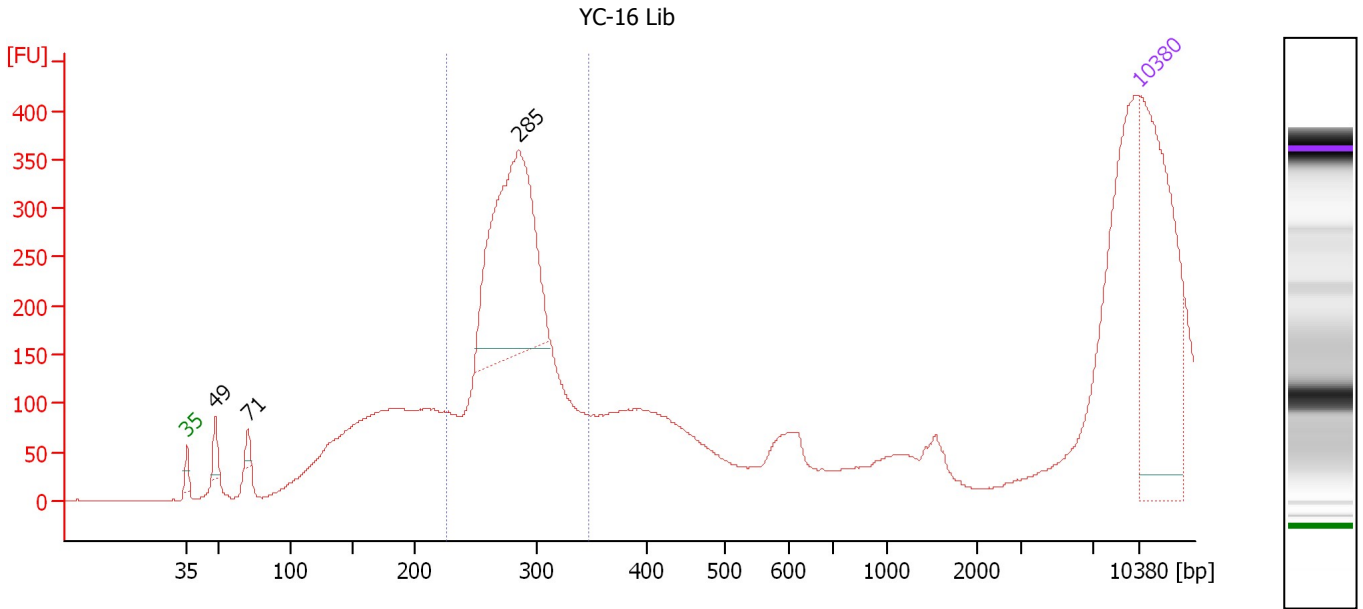
Region table for sample 8 : YC-8-2 Lib

From [bp]	Molarity [pmol/l]	Average Size [bp]	Conc. [pg/μl]	To [bp]	Corr. Area	% of Total	Size distribution in CV [%]	Color
317	4,790.6	393	1,234.41	489	1,123.8	94	7.7	Blue

Assay Class: High Sensitivity DNA Assay
 Data Path: C:\...ents and Settings\Bioanalyzer\2012-04-26\2012-04-26_003.xad

Created: 4/26/2012 4:11:08 PM
 Modified: 4/26/2012 5:11:24 PM

Electropherogram Summary Continued ...



Overall Results for sample 9 : YC-16 Lib

Number of peaks found: 3 Corr. Area 1: 2,249.8
 Noise: 0.2

Peak table for sample 9 : YC-16 Lib

Peak	Size [bp]	Conc. [pg/μl]	Molarity [pmol/l]	Observations
1	35	125.00	5,411.3	Lower Marker
2	49	9.38	291.3	
3	71	4.92	104.9	
4	285	141.44	751.1	
5	10,380	75.00	10.9	Upper Marker

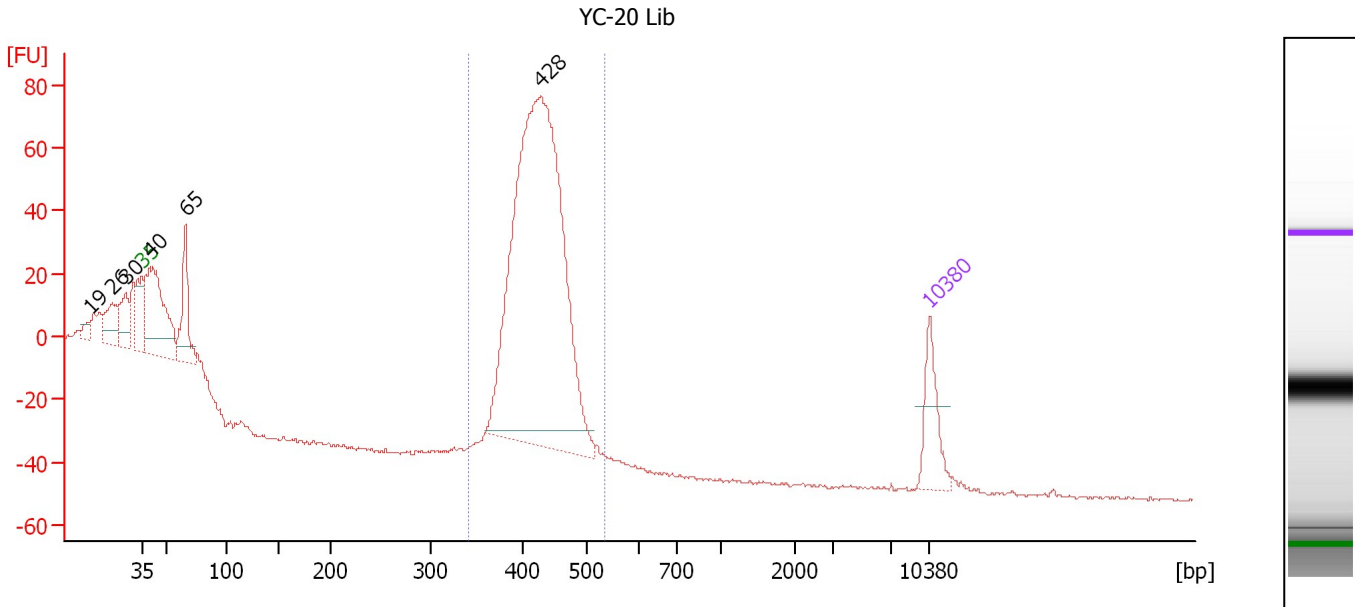
Region table for sample 9 : YC-16 Lib

From [bp]	Molarity [pmol/l]	Average Size [bp]	Conc. [pg/μl]	To [bp]	Corr. Area	% of Total	Size distribution in CV [%]	Color
226	1,355.8	281	250.22	347	2,249.8	66	7.2	Blue

Assay Class: High Sensitivity DNA Assay
 Data Path: C:\...ents and Settings\Bioanalyzer\2012-04-26\2012-04-26_003.xad

Created: 4/26/2012 4:11:08 PM
 Modified: 4/26/2012 5:11:24 PM

Electropherogram Summary Continued ...



Overall Results for sample 10 : YC-20 Lib

Number of peaks found: 6 Corr. Area 1: 643.0
 Noise: 0.5

Peak table for sample 10 : YC-20 Lib

Peak	Size [bp]	Conc. [pg/μl]	Molarity [pmol/l]	Observations
1	19	0.00	0.0	
2	26	0.00	0.0	
3	30	0.00	0.0	
4	35	125.00	5,411.3	Lower Marker
5	40	356.58	13,499.4	
6	65	154.22	3,585.3	
7	428	1,285.83	4,554.4	
8	10,380	75.00	10.9	Upper Marker

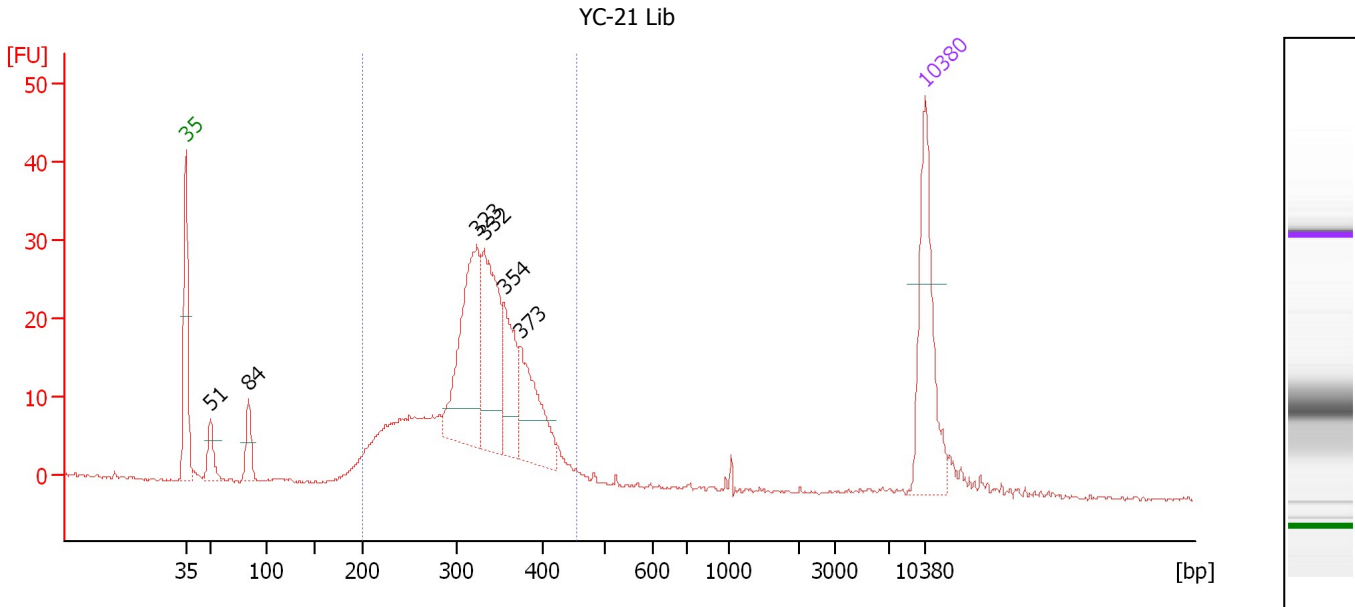
Region table for sample 10 : YC-20 Lib

From [bp]	Molarity [pmol/l]	Average Size [bp]	Conc. [pg/μl]	To [bp]	Corr. Area	% of Total	Size distribution in CV [%]	Color
342	3,691.1	425	1,031.44	533	643.0	67	6.3	Blue

Assay Class: High Sensitivity DNA Assay
 Data Path: C:\...ents and Settings\Bioanalyzer\2012-04-26\2012-04-26_003.xad

Created: 4/26/2012 4:11:08 PM
 Modified: 4/26/2012 5:11:24 PM

Electropherogram Summary Continued ...



Overall Results for sample 11 : YC-21 Lib

Number of peaks found: 6 Corr. Area 1: 365.8
 Noise: 0.2

Peak table for sample 11 : YC-21 Lib

Peak	Size [bp]	Conc. [pg/μl]	Molarity [pmol/l]	Observations
1	35	125.00	5,411.3	Lower Marker
2	51	25.74	771.4	
3	84	28.54	513.9	
4	323	141.56	664.1	
5	332	110.44	504.5	
6	354	58.09	248.6	
7	373	70.72	287.0	
8	10,380	75.00	10.9	Upper Marker

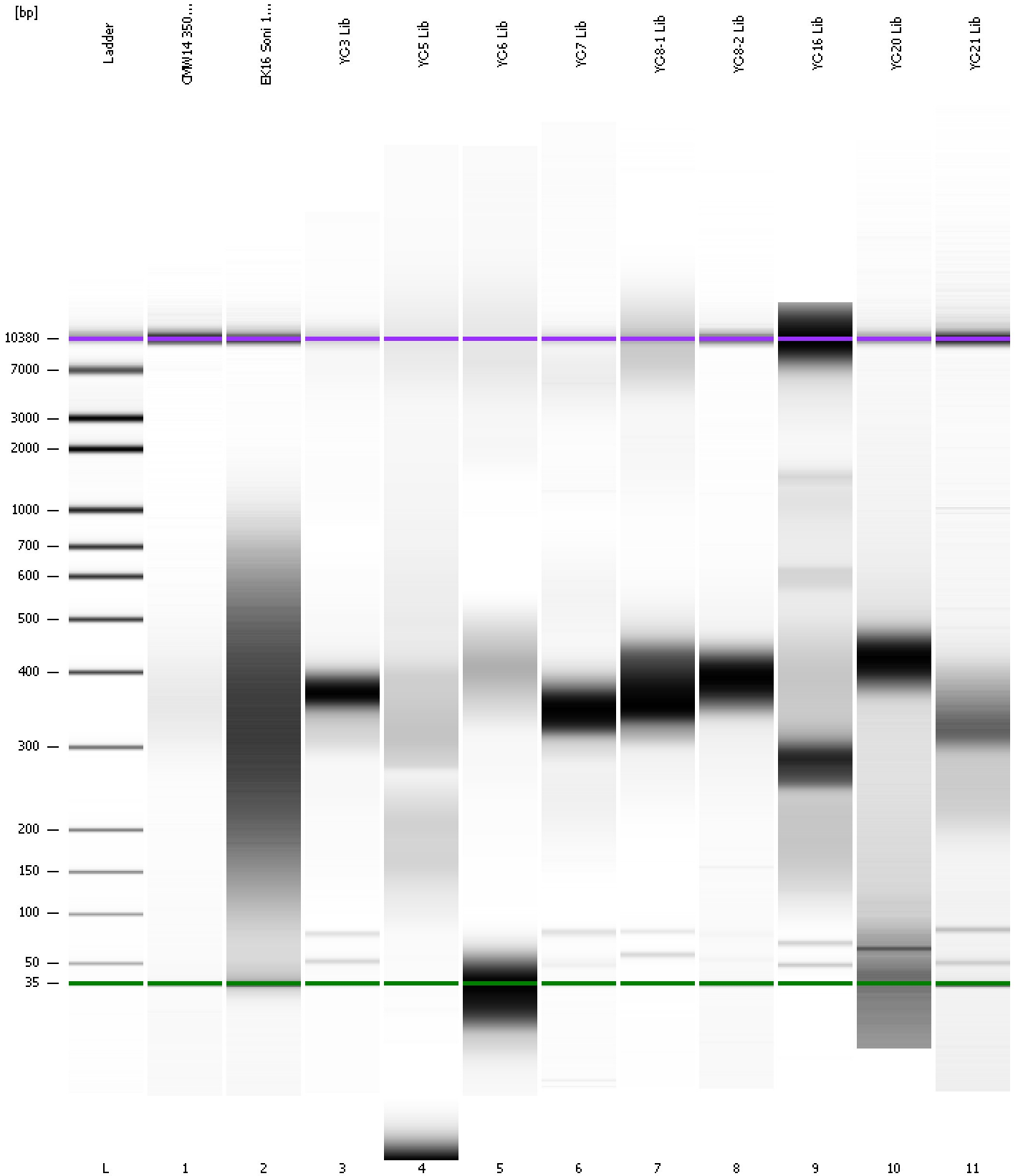
Region table for sample 11 : YC-21 Lib

From [bp]	Molarity [pmol/l]	Average Size [bp]	Conc. [pg/μl]	To [bp]	Corr. Area	% of Total	Size distribution in CV [%]	Color
200	3,201.6	324	660.83	455	365.8	90	16.0	Blue

Assay Class: High Sensitivity DNA Assay
Data Path: C:\...ents and Settings\Bioanalyzer\2012-04-26\2012-04-26_003.xad

Created: 4/26/2012 4:11:08 PM
Modified: 4/26/2012 5:11:24 PM

Gel Image



Assay Class: High Sensitivity DNA Assay
 Data Path: C:\...ents and Settings\Bioanalyzer\2012-04-26\2012-04-26_003.xad

Created: 4/26/2012 4:11:08 PM
 Modified: 4/26/2012 5:11:24 PM

Run Logbook

Description	Number	Source	Category	Sub Category	Time	Time Zone	User	Host
Run ended on port 1 (Number of wells acquired: 12)		Instrument	Run		4/26/2012 4:52:27 PM	(GMT --07:00) Pacific Standard Time	UC Davis	D8XSMGH1
Run started on port 1 (File: C:\Documents and Settings\Bioanalyzer\2012-04-26\2012-04-26_003.xad)		Instrument	Run		4/26/2012 4:11:14 PM	(GMT --07:00) Pacific Standard Time	UC Davis	D8XSMGH1
Product Number : G2938B		Instrument	Run		4/26/2012 4:11:14 PM	(GMT --07:00) Pacific Standard Time	UC Davis	D8XSMGH1
Name :		Instrument	Run		4/26/2012 4:11:14 PM	(GMT --07:00) Pacific Standard Time	UC Davis	D8XSMGH1
Vendor : Agilent Technologies		Instrument	Run		4/26/2012 4:11:14 PM	(GMT --07:00) Pacific Standard Time	UC Davis	D8XSMGH1
Serial# : DE13701086		Instrument	Run		4/26/2012 4:11:14 PM	(GMT --07:00) Pacific Standard Time	UC Davis	D8XSMGH1
Firmware : C.01.069		Instrument	Run		4/26/2012 4:11:14 PM	(GMT --07:00) Pacific Standard Time	UC Davis	D8XSMGH1
Cartridge : Electrode		Instrument	Run		4/26/2012 4:11:14 PM	(GMT --07:00) Pacific Standard Time	UC Davis	D8XSMGH1