

Assay Class: Eukaryote Total RNA Pico
Data Path: C:\...ents and Settings\Bioanalyzer\2012-04-30\2012-04-30_001.xad

Created: 4/30/2012 11:33:57 AM
Modified: 4/30/2012 11:56:52 AM

Electrophoresis File Run Summary

Instrument Information:

Instrument Name: DE13701086 Firmware: C.01.069
Serial#: DE13701086 Type: G2938B

Assay Information:

Assay Origin Path: C:\Program Files\Agilent\2100 bioanalyzer\2100 expert\assays\RNA\Eukaryote Total RNA Pico Series II.xsy

Assay Class: Eukaryote Total RNA Pico

Version: 2.6

Assay Comments: Total RNA Analysis pg sensitivity (Eukaryote)

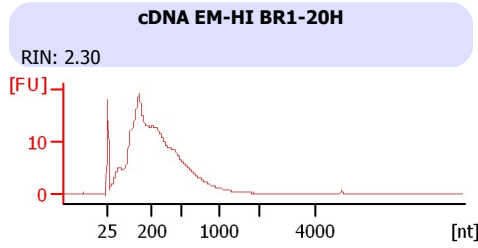
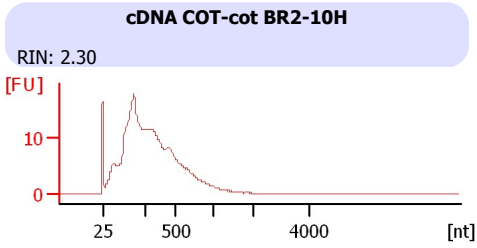
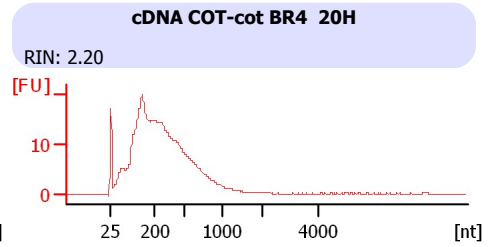
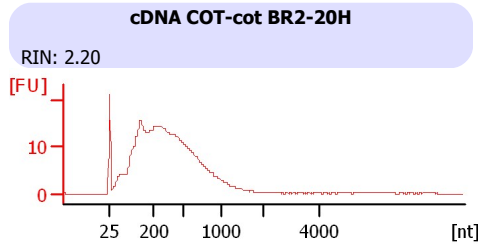
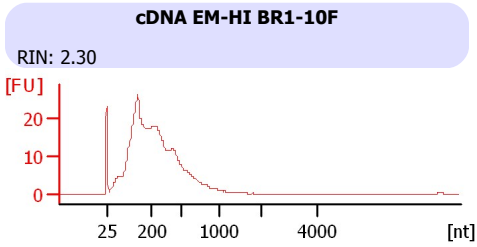
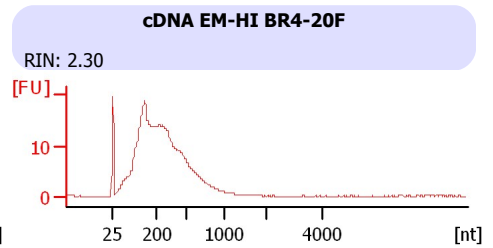
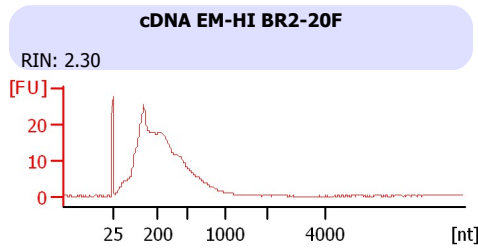
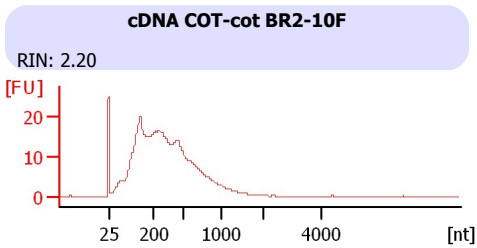
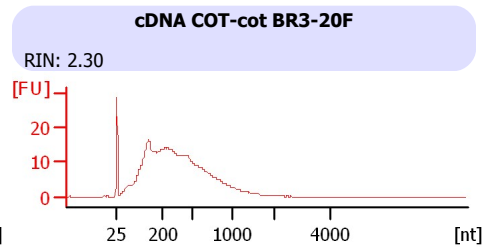
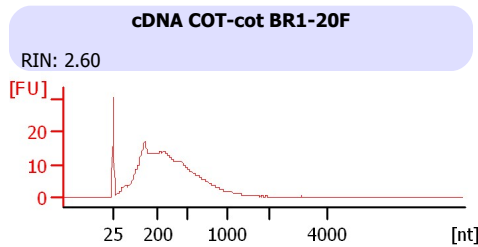
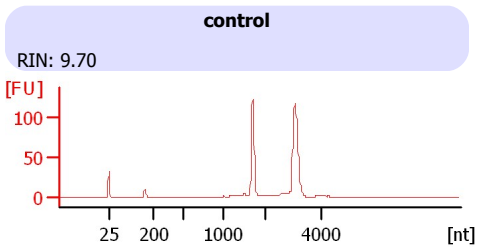
© Copyright 2003 - 2009 Agilent Technologies, Inc.

Chip Information:

Chip Lot #:

Reagent Kit Lot #:

Chip Comments:



Assay Class: Eukaryote Total RNA Pico
 Data Path: C:\...ents and Settings\Bioanalyzer\2012-04-30\2012-04-30_001.xad

Created: 4/30/2012 11:33:57 AM
 Modified: 4/30/2012 11:56:52 AM

Electrophoresis File Run Summary (Chip Summary)

Sample Name	Sample Comment	Status	Result Label	Result Color
control		✓	RIN: 9.70	
cDNA COT-cot BR1-20F		✓	RIN: 2.60	
cDNA COT-cot BR3-20F		✓	RIN: 2.30	
cDNA COT-cot BR2-10F		✓	RIN: 2.20	
cDNA EM-HI BR2-20F		✓	RIN: 2.30	
cDNA EM-HI BR4-20F		✓	RIN: 2.30	
cDNA EM-HI BR1-10F		✓	RIN: 2.30	
cDNA COT-cot BR2-20H		✓	RIN: 2.20	
cDNA COT-cot BR4 20H		✓	RIN: 2.20	
cDNA COT-cot BR2-10H		✓	RIN: 2.30	
cDNA EM-HI BR1-20H		✓	RIN: 2.30	
Ladder		✓	All Other Samples	

Chip Lot #

Reagent Kit Lot #

Chip Comments :

Assay Class: Eukaryote Total RNA Pico
Data Path: C:\...ents and Settings\Bioanalyzer\2012-04-30\2012-04-30_001.xad

Created: 4/30/2012 11:33:57 AM
Modified: 4/30/2012 11:56:52 AM

Electrophoresis Assay Details

General Analysis Settings

Number of Available Sample and Ladder Wells (Max.) : 12
Minimum Visible Range [s] : 17
Maximum Visible Range [s] : 70
Start Analysis Time Range [s] : 18
End Analysis Time Range [s] : 69
Ladder Concentration [pg/ μ l] : 1000
Lower Marker Concentration [pg/ μ l] : 0
Upper Marker Concentration [pg/ μ l] : 0
Used Lower Marker for Quantitation
Standard Curve Fit is Logarithmic
Show Data Aligned to Lower Marker

Integrator Settings

Integration Start Time [s] : 18
Integration End Time [s] : 69
Slope Threshold : 0.6
Height Threshold [FU] : 0.5
Area Threshold : 0.2
Width Threshold [s] : 0.3
Baseline Plateau [s] : 6

Filter Settings

Filter Width [s] : 0.5
Polynomial Order : 4

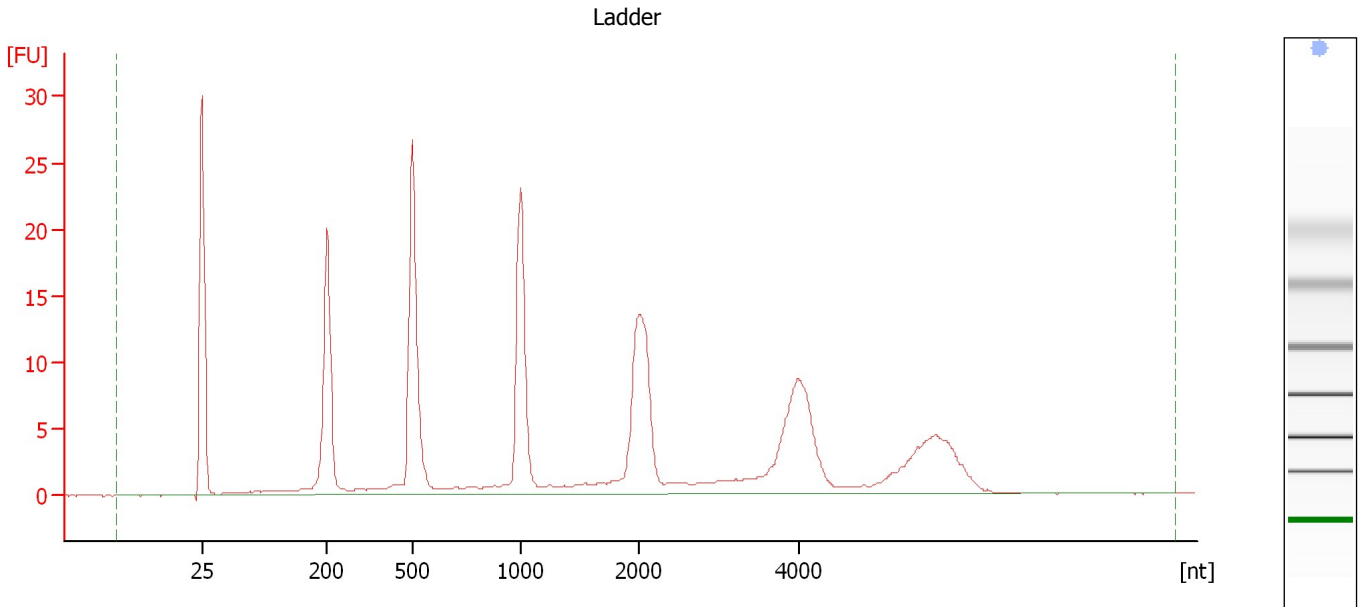
Ladder

Ladder Peak	Size
1	25
2	200
3	500
4	1000
5	2000
6	4000

Assay Class: Eukaryote Total RNA Pico
Data Path: C:\...ents and Settings\Bioanalyzer\2012-04-30\2012-04-30_001.xad

Created: 4/30/2012 11:33:57 AM
Modified: 4/30/2012 11:56:52 AM

Electropherogram Summary



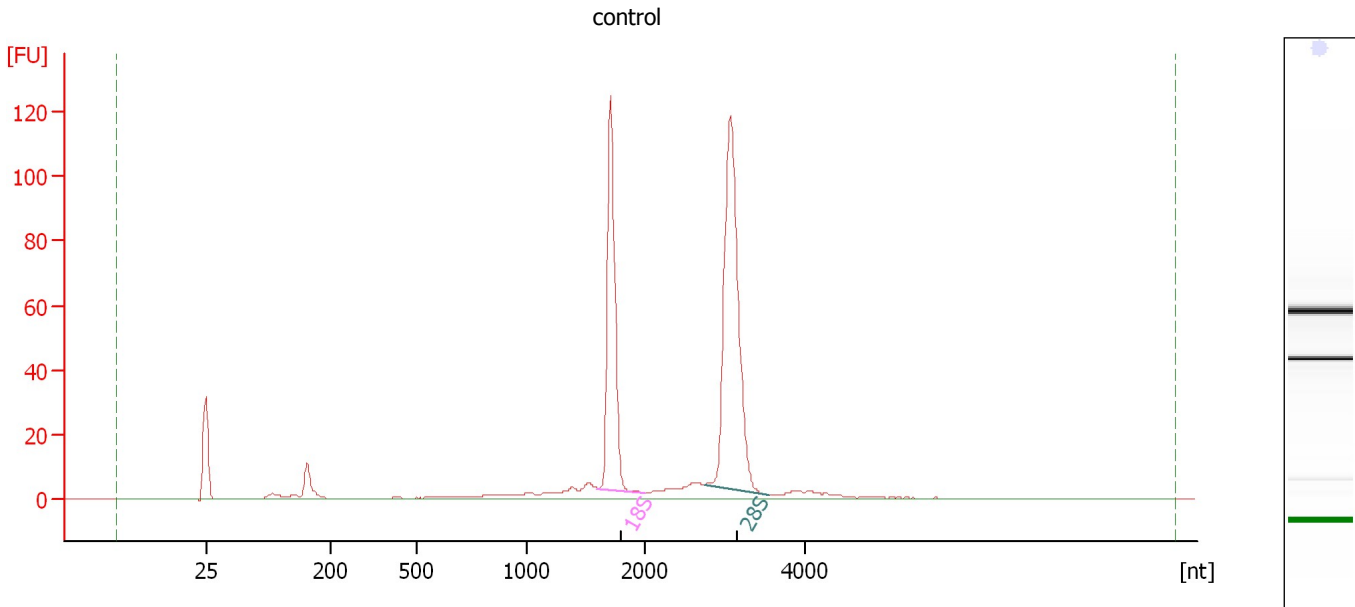
Overall Results for Ladder

RNA Area:	197.4	Result Flagging Color:	
RNA Concentration:	1,000 pg/μl	Result Flagging Label:	All Other Samples

Assay Class: Eukaryote Total RNA Pico
Data Path: C:\...ents and Settings\Bioanalyzer\2012-04-30\2012-04-30_001.xad

Created: 4/30/2012 11:33:57 AM
Modified: 4/30/2012 11:56:52 AM

Electropherogram Summary Continued ...



Overall Results for sample 1 : control

RNA Area:	425.2	RNA Integrity Number (RIN):	9.7 (B.02.08)
RNA Concentration:	2,153 pg/μl	Result Flagging Color:	
rRNA Ratio [28s / 18s]:	1.6	Result Flagging Label:	RIN: 9.70

Fragment table for sample 1 : control

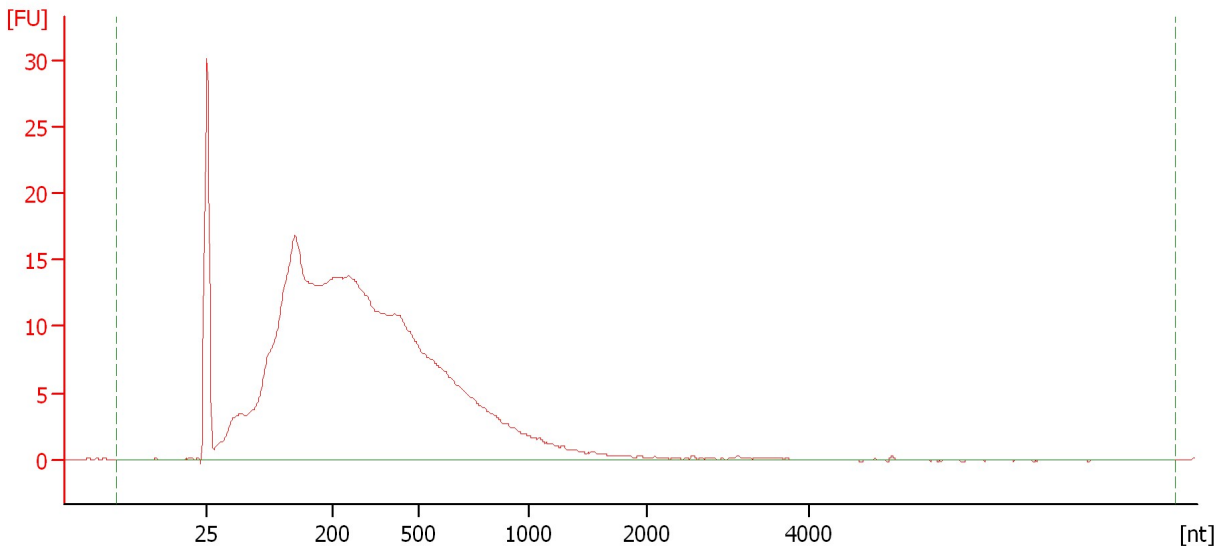
Name	Start Size [nt]	End Size [nt]	Area	% of total Area
18S	1,600	1,994	115.2	27.1
28S	2,738	3,539	180.7	42.5

Assay Class: Eukaryote Total RNA Pico
Data Path: C:\...ents and Settings\Bioanalyzer\2012-04-30\2012-04-30_001.xad

Created: 4/30/2012 11:33:57 AM
Modified: 4/30/2012 11:56:52 AM

Electropherogram Summary Continued ...

cDNA COT-cot BR1-20F



Overall Results for sample 2 : cDNA COT-cot BR1-20F

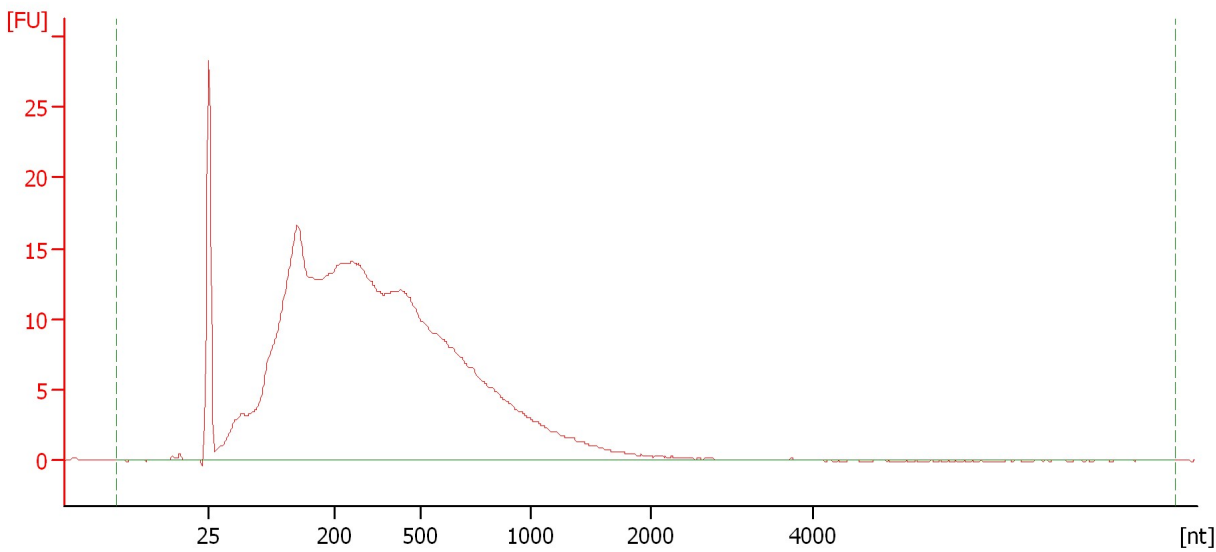
RNA Area:	402.4	RNA Integrity Number (RIN):	2.6 (B.02.08)
RNA Concentration:	2,038 pg/μl	Result Flagging Color:	
rRNA Ratio [28s / 18s]:	0.0	Result Flagging Label:	RIN: 2.60

Assay Class: Eukaryote Total RNA Pico
Data Path: C:\...ents and Settings\Bioanalyzer\2012-04-30\2012-04-30_001.xad

Created: 4/30/2012 11:33:57 AM
Modified: 4/30/2012 11:56:52 AM

Electropherogram Summary Continued ...

cDNA COT-cot BR3-20F



Overall Results for sample 3 : cDNA COT-cot BR3-20F

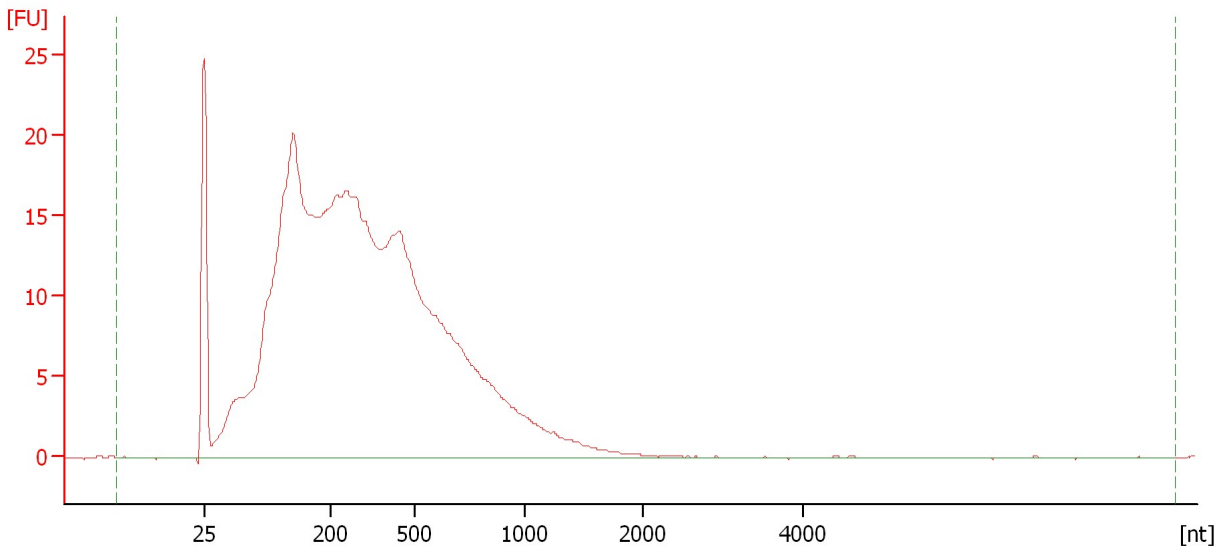
RNA Area:	435.9	RNA Integrity Number (RIN):	2.3 (B.02.08)
RNA Concentration:	2,208 pg/μl	Result Flagging Color:	
rRNA Ratio [28s / 18s]:	0.0	Result Flagging Label:	RIN: 2.30

Assay Class: Eukaryote Total RNA Pico
Data Path: C:\...ents and Settings\Bioanalyzer\2012-04-30\2012-04-30_001.xad


Created: 4/30/2012 11:33:57 AM
Modified: 4/30/2012 11:56:52 AM

Electropherogram Summary Continued ...

cDNA COT-cot BR2-10F



Overall Results for sample 4 : cDNA COT-cot BR2-10F

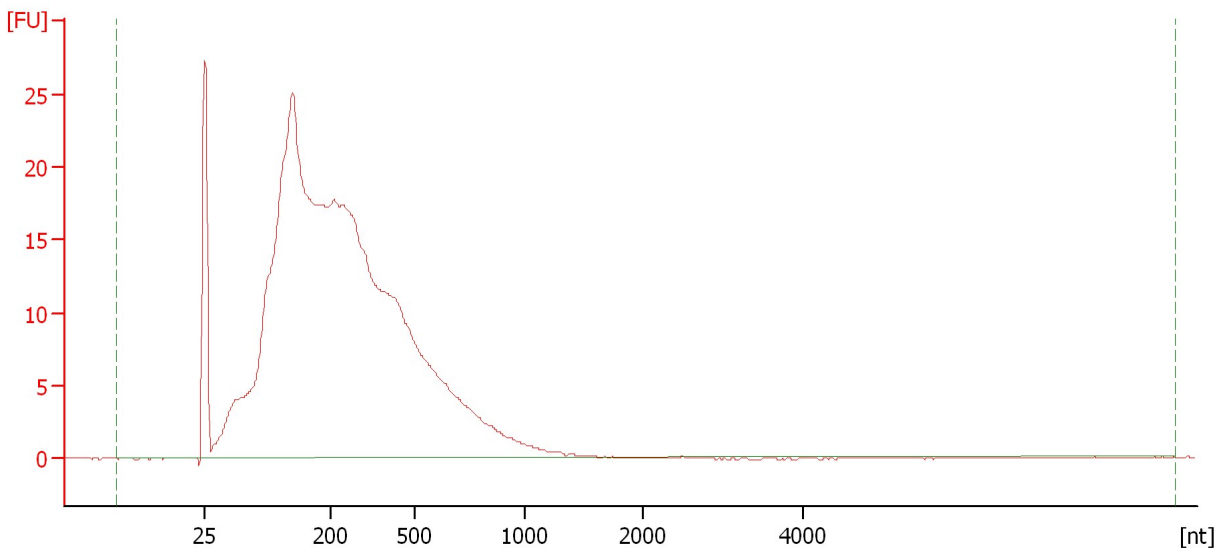
RNA Area:	484.0	RNA Integrity Number (RIN):	2.2 (B.02.08)
RNA Concentration:	2,451 pg/μl	Result Flagging Color:	
rRNA Ratio [28s / 18s]:	0.0	Result Flagging Label:	RIN: 2.20

Assay Class: Eukaryote Total RNA Pico
Data Path: C:\...ents and Settings\Bioanalyzer\2012-04-30\2012-04-30_001.xad

Created: 4/30/2012 11:33:57 AM
Modified: 4/30/2012 11:56:52 AM

Electropherogram Summary Continued ...

cDNA EM-HI BR2-20F



Overall Results for sample 5 : cDNA EM-HI BR2-20F

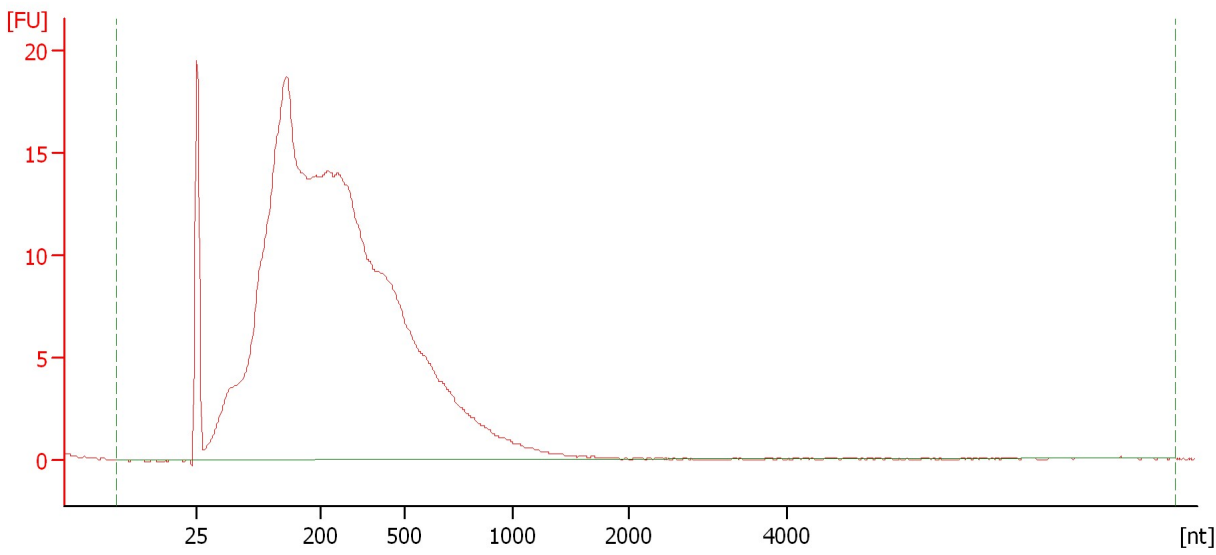
RNA Area:	461.9	RNA Integrity Number (RIN):	2.3 (B.02.08)
RNA Concentration:	2,339 pg/μl	Result Flagging Color:	
rRNA Ratio [28s / 18s]:	0.0	Result Flagging Label:	RIN: 2.30

Assay Class: Eukaryote Total RNA Pico
Data Path: C:\...ents and Settings\Bioanalyzer\2012-04-30\2012-04-30_001.xad

Created: 4/30/2012 11:33:57 AM
Modified: 4/30/2012 11:56:52 AM

Electropherogram Summary Continued ...

cDNA EM-HI BR4-20F



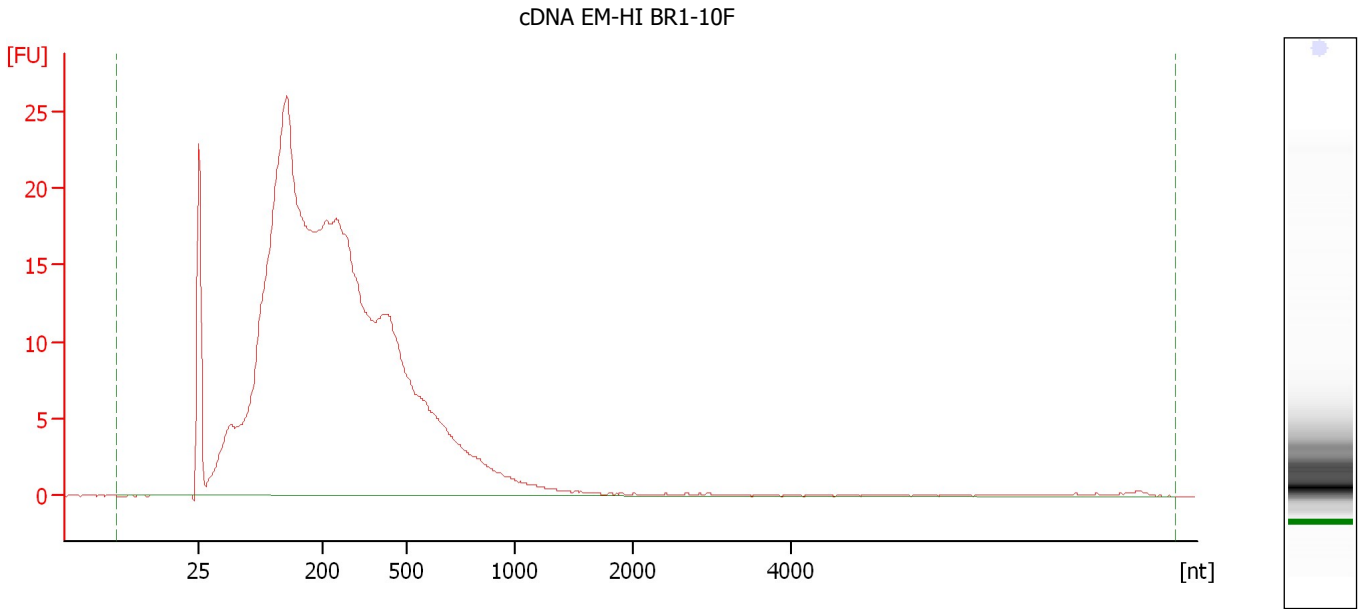
Overall Results for sample 6 : cDNA EM-HI BR4-20F

RNA Area:	375.6	RNA Integrity Number (RIN):	2.3 (B.02.08)
RNA Concentration:	1,902 pg/μl	Result Flagging Color:	
rRNA Ratio [28s / 18s]:	0.0	Result Flagging Label:	RIN: 2.30

Assay Class: Eukaryote Total RNA Pico
Data Path: C:\...ents and Settings\Bioanalyzer\2012-04-30\2012-04-30_001.xad

Created: 4/30/2012 11:33:57 AM
Modified: 4/30/2012 11:56:52 AM

Electropherogram Summary Continued ...



Overall Results for sample 7 : cDNA EM-HI BR1-10F

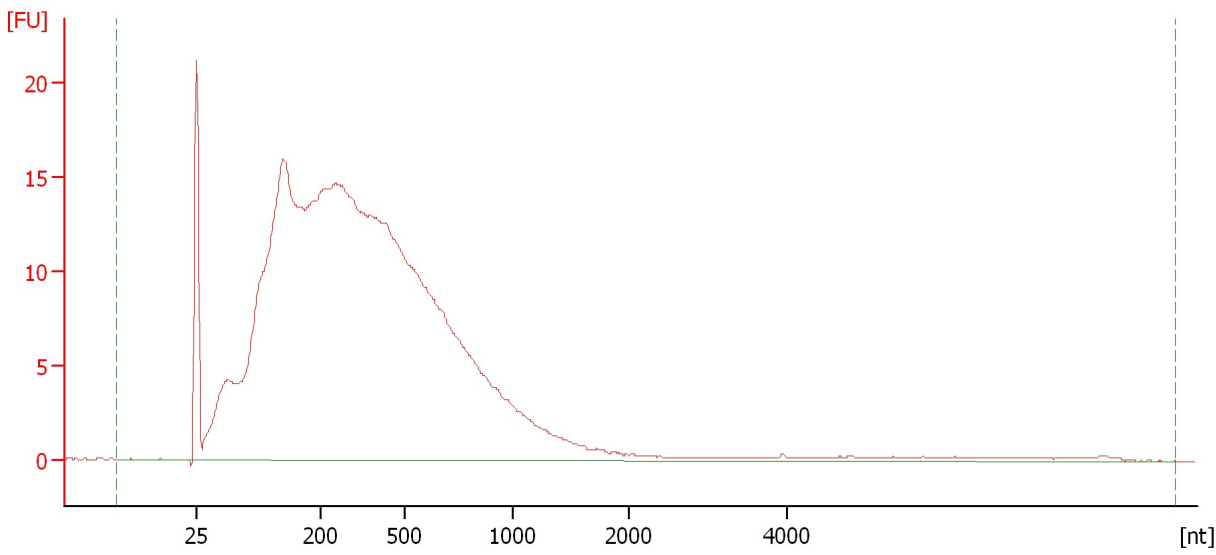
RNA Area:	482.2	RNA Integrity Number (RIN):	2.3 (B.02.08)
RNA Concentration:	2,442 pg/μl	Result Flagging Color:	
rRNA Ratio [28s / 18s]:	0.0	Result Flagging Label:	RIN: 2.30

Assay Class: Eukaryote Total RNA Pico
Data Path: C:\...ents and Settings\Bioanalyzer\2012-04-30\2012-04-30_001.xad

Created: 4/30/2012 11:33:57 AM
Modified: 4/30/2012 11:56:52 AM

Electropherogram Summary Continued ...

cDNA COT-cot BR2-20H



Overall Results for sample 8 : cDNA COT-cot BR2-20H

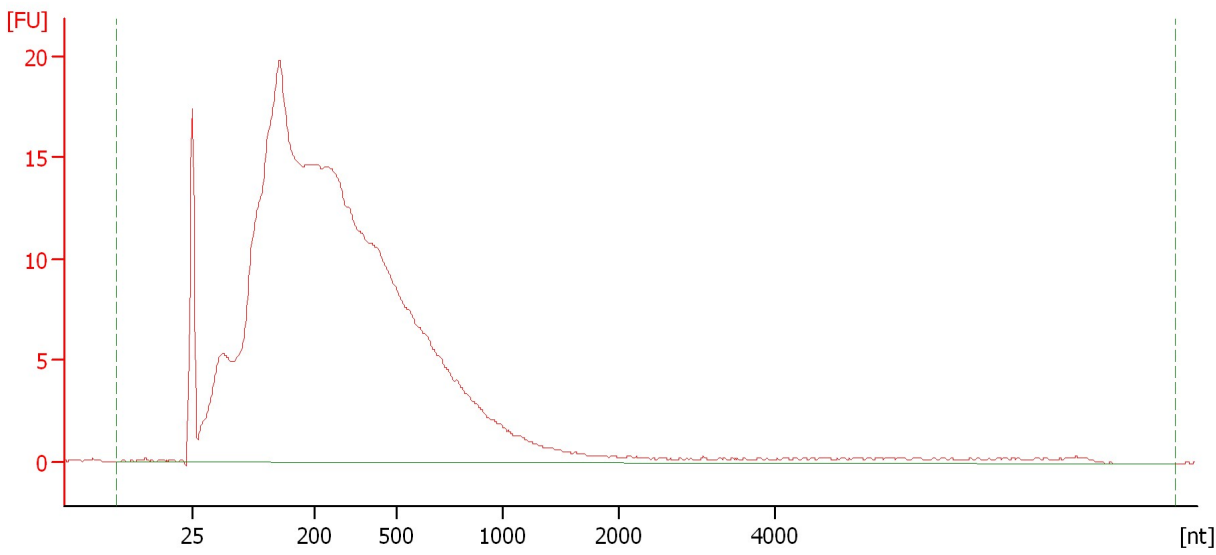
RNA Area:	468.5	RNA Integrity Number (RIN):	2.2 (B.02.08)
RNA Concentration:	2,373 pg/μl	Result Flagging Color:	
rRNA Ratio [28s / 18s]:	0.0	Result Flagging Label:	RIN: 2.20

Assay Class: Eukaryote Total RNA Pico
Data Path: C:\...ents and Settings\Bioanalyzer\2012-04-30\2012-04-30_001.xad

Created: 4/30/2012 11:33:57 AM
Modified: 4/30/2012 11:56:52 AM

Electropherogram Summary Continued ...

cDNA COT-cot BR4 20H



Overall Results for sample 9 : cDNA COT-cot BR4 20H

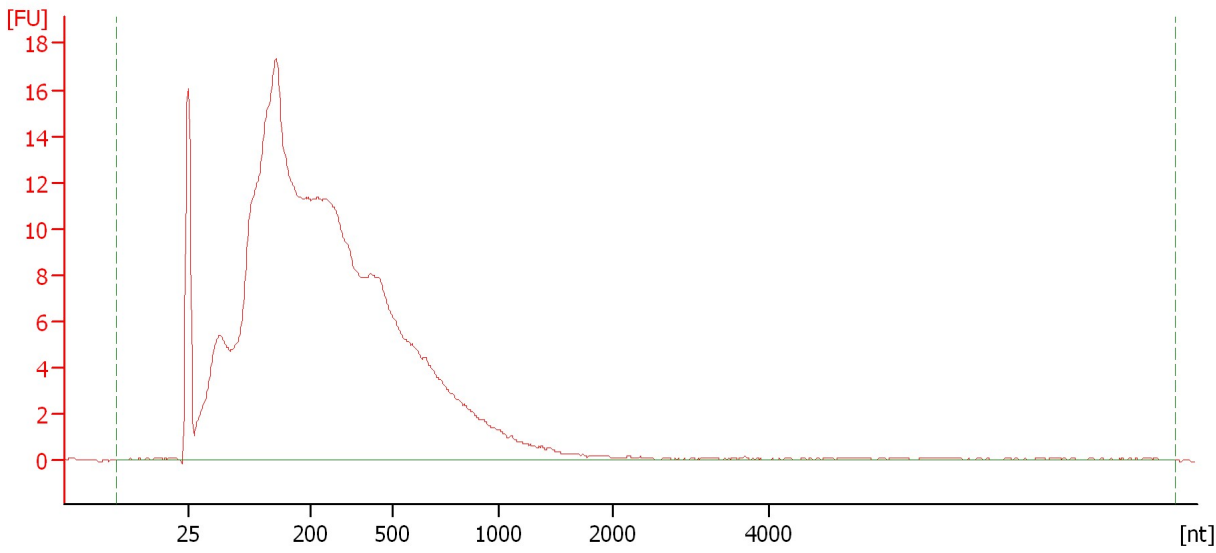
RNA Area:	451.7	RNA Integrity Number (RIN):	2.2 (B.02.08)
RNA Concentration:	2,288 pg/μl	Result Flagging Color:	
rRNA Ratio [28s / 18s]:	0.0	Result Flagging Label:	RIN: 2.20

Assay Class: Eukaryote Total RNA Pico
Data Path: C:\...ents and Settings\Bioanalyzer\2012-04-30\2012-04-30_001.xad

Created: 4/30/2012 11:33:57 AM
Modified: 4/30/2012 11:56:52 AM

Electropherogram Summary Continued ...

cDNA COT-cot BR2-10H



Overall Results for sample 10 : cDNA COT-cot BR2-10H

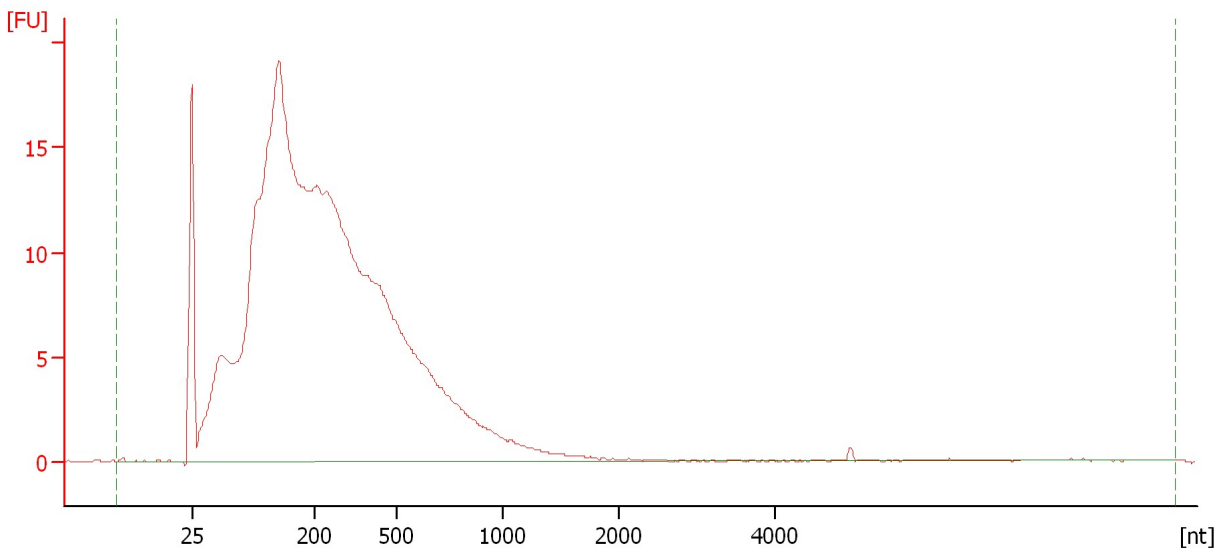
RNA Area:	362.2	RNA Integrity Number (RIN):	2.3 (B.02.08)
RNA Concentration:	1,835 pg/μl	Result Flagging Color:	
rRNA Ratio [28s / 18s]:	0.0	Result Flagging Label:	RIN: 2.30

Assay Class: Eukaryote Total RNA Pico
Data Path: C:\...ents and Settings\Bioanalyzer\2012-04-30\2012-04-30_001.xad

Created: 4/30/2012 11:33:57 AM
Modified: 4/30/2012 11:56:52 AM

Electropherogram Summary Continued ...

cDNA EM-HI BR1-20H



Overall Results for sample 11 : cDNA EM-HI BR1-20H

RNA Area:	382.4	RNA Integrity Number (RIN):	2.3 (B.02.08)
RNA Concentration:	1,937 pg/μl	Result Flagging Color:	
rRNA Ratio [28s / 18s]:	0.0	Result Flagging Label:	RIN: 2.30

Assay Class: Eukaryote Total RNA Pico
Data Path: C:\...ents and Settings\Bioanalyzer\2012-04-30\2012-04-30_001.xad

Created: 4/30/2012 11:33:57 AM
Modified: 4/30/2012 11:56:52 AM

Gel Image

Assay Class: Eukaryote Total RNA Pico
 Data Path: C:\...ents and Settings\Bioanalyzer\2012-04-30\2012-04-30_001.xad

Created: 4/30/2012 11:33:57 AM
 Modified: 4/30/2012 11:56:52 AM

Run Logbook

Description	Number	Source	Category	Sub Category	Time	Time Zone	User	Host
Run ended on port 1 (Number of wells acquired: 12)		Instrument	Run		4/30/2012 11:56:50 AM	(GMT --07:00) Pacific Standard Time	UC Davis	D8XSMGH1
Run started on port 1 (File: C:\Documents and Settings\Bioanalyzer\2012-04-30\2012-04-30_001.xad)		Instrument	Run		4/30/2012 11:34:02 AM	(GMT --07:00) Pacific Standard Time	UC Davis	D8XSMGH1
Product Number : G2938B		Instrument	Run		4/30/2012 11:34:02 AM	(GMT --07:00) Pacific Standard Time	UC Davis	D8XSMGH1
Name :		Instrument	Run		4/30/2012 11:34:02 AM	(GMT --07:00) Pacific Standard Time	UC Davis	D8XSMGH1
Vendor : Agilent Technologies		Instrument	Run		4/30/2012 11:34:02 AM	(GMT --07:00) Pacific Standard Time	UC Davis	D8XSMGH1
Serial# : DE13701086		Instrument	Run		4/30/2012 11:34:02 AM	(GMT --07:00) Pacific Standard Time	UC Davis	D8XSMGH1
Firmware : C.01.069		Instrument	Run		4/30/2012 11:34:02 AM	(GMT --07:00) Pacific Standard Time	UC Davis	D8XSMGH1
Cartridge : Electrode		Instrument	Run		4/30/2012 11:34:02 AM	(GMT --07:00) Pacific Standard Time	UC Davis	D8XSMGH1