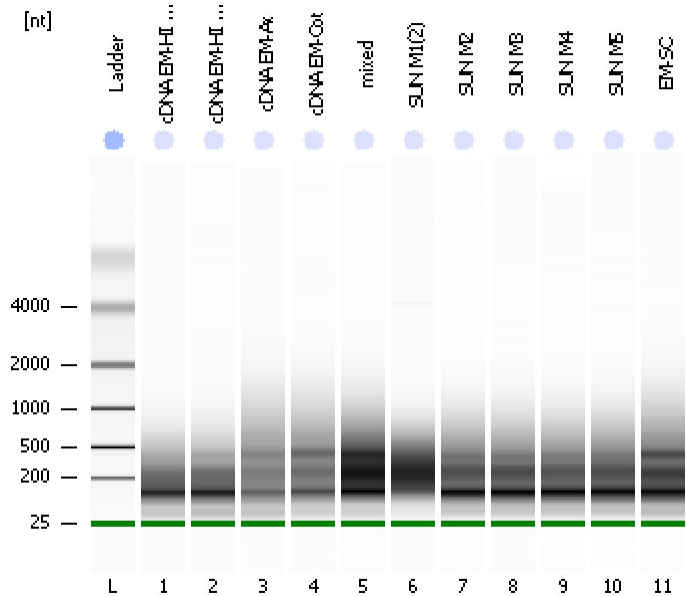


Assay Class: Eukaryote Total RNA Pico
Data Path: C:\...ents and Settings\Bioanalyzer\2012-04-30\2012-04-30_002.xad

Created: 4/30/2012 12:11:35 PM
Modified: 4/30/2012 12:34:34 PM

Electrophoresis File Run Summary



Instrument Information:

Instrument Name: DE13701086 Firmware: C.01.069
Serial#: DE13701086 Type: G2938B

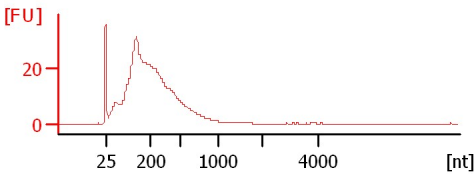
Assay Information:

Assay Origin Path: C:\Program Files\Agilent\2100 bioanalyzer\2100 expert\assays\RNA\Eukaryote Total RNA Pico Series II.xsy
Assay Class: Eukaryote Total RNA Pico
Version: 2.6
Assay Comments: Total RNA Analysis pg sensitivity (Eukaryote)
© Copyright 2003 - 2009 Agilent Technologies, Inc.

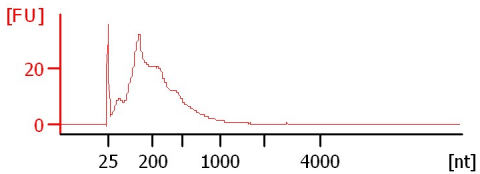
Chip Information:

Chip Lot #:
Reagent Kit Lot #:
Chip Comments:

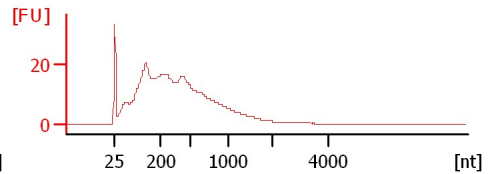
cdNA EM-HI BR3-20H
RIN: 2.40



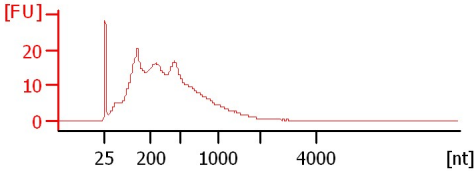
cdNA EM-HI BR1-10H
RIN: 2.40



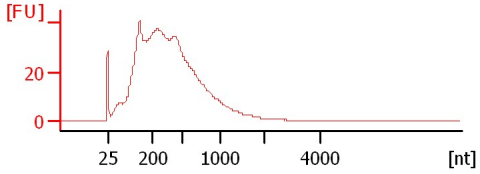
cdNA EM-Ax
RIN: 2.40



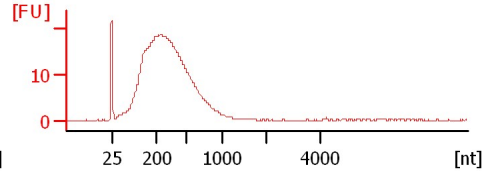
cdNA EM-Cot
RIN: 2.20



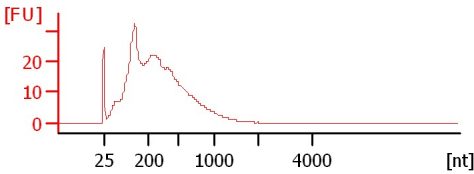
mixed
RIN: 2



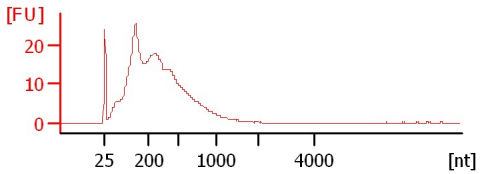
SUN M1(2)
RIN: 5.60



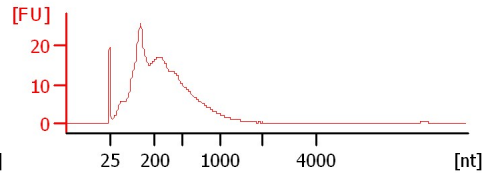
SUN M2
RIN: 2.60



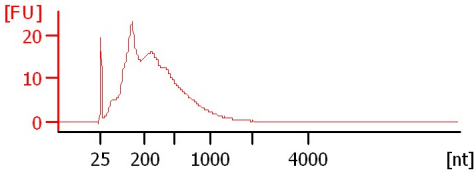
SUN M3
RIN: 2.20



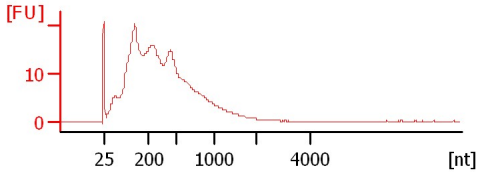
SUN M4
RIN: 2.20



SUN M5
RIN: 2.20



EM-SC
RIN: 2.20



Assay Class: Eukaryote Total RNA Pico
 Data Path: C:\...ents and Settings\Bioanalyzer\2012-04-30\2012-04-30_002.xad

Created: 4/30/2012 12:11:35 PM
 Modified: 4/30/2012 12:34:34 PM

Electrophoresis File Run Summary (Chip Summary)

Sample Name	Sample Comment	Status	Result Label	Result Color
cDNA EM-HI BR3-20H		✓	RIN: 2.40	
cDNA EM-HI BR1-10H		✓	RIN: 2.40	
cDNA EM-Ax		✓	RIN: 2.40	
cDNA EM-Cot		✓	RIN: 2.20	
mixed		✓	RIN:2	
SUN M1(2)		✓	RIN: 5.60	
SUN M2		✓	RIN: 2.60	
SUN M3		✓	RIN: 2.20	
SUN M4		✓	RIN: 2.20	
SUN M5		✓	RIN: 2.20	
EM-SC		✓	RIN: 2.20	
Ladder		✓	All Other Samples	

Chip Lot #

Reagent Kit Lot #

Chip Comments :

Assay Class: Eukaryote Total RNA Pico
Data Path: C:\...ents and Settings\Bioanalyzer\2012-04-30\2012-04-30_002.xad

Created: 4/30/2012 12:11:35 PM
Modified: 4/30/2012 12:34:34 PM

Electrophoresis Assay Details

General Analysis Settings

Number of Available Sample and Ladder Wells (Max.) : 12
Minimum Visible Range [s] : 17
Maximum Visible Range [s] : 70
Start Analysis Time Range [s] : 18
End Analysis Time Range [s] : 69
Ladder Concentration [pg/ μ l] : 1000
Lower Marker Concentration [pg/ μ l] : 0
Upper Marker Concentration [pg/ μ l] : 0
Used Lower Marker for Quantitation
Standard Curve Fit is Logarithmic
Show Data Aligned to Lower Marker

Integrator Settings

Integration Start Time [s] : 18
Integration End Time [s] : 69
Slope Threshold : 0.6
Height Threshold [FU] : 0.5
Area Threshold : 0.2
Width Threshold [s] : 0.3
Baseline Plateau [s] : 6

Filter Settings

Filter Width [s] : 0.5
Polynomial Order : 4

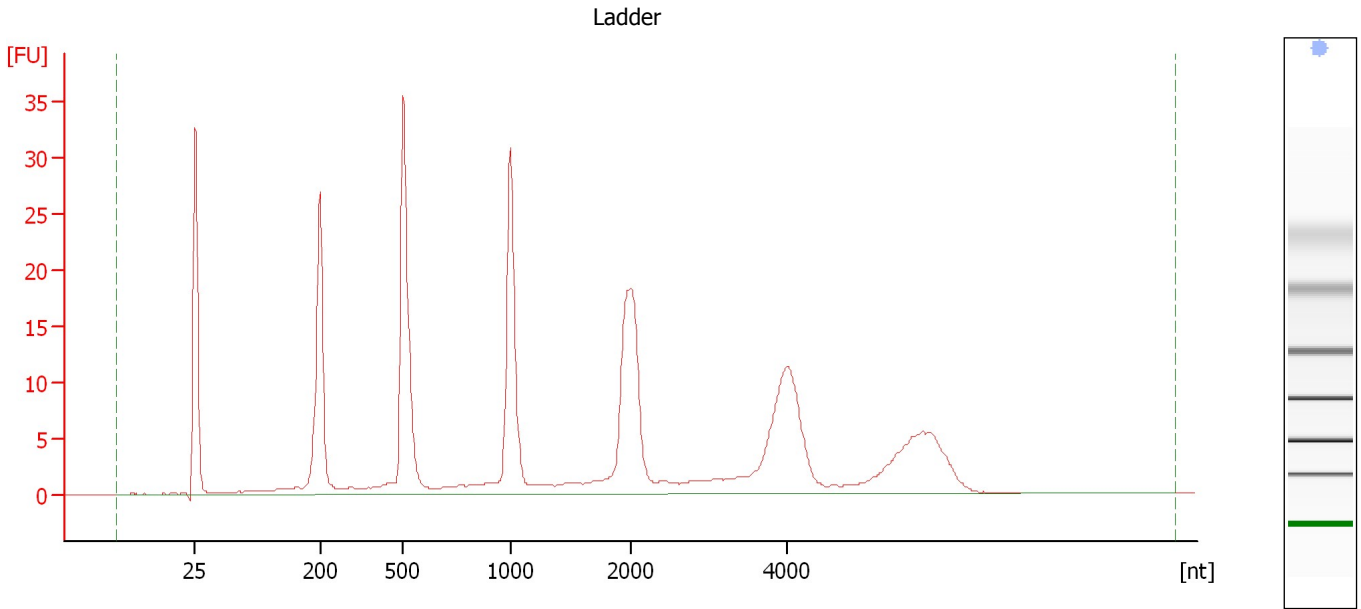
Ladder

Ladder Peak	Size
1	25
2	200
3	500
4	1000
5	2000
6	4000

Assay Class: Eukaryote Total RNA Pico
Data Path: C:\...ents and Settings\Bioanalyzer\2012-04-30\2012-04-30_002.xad

Created: 4/30/2012 12:11:35 PM
Modified: 4/30/2012 12:34:34 PM

Electropherogram Summary



Overall Results for Ladder

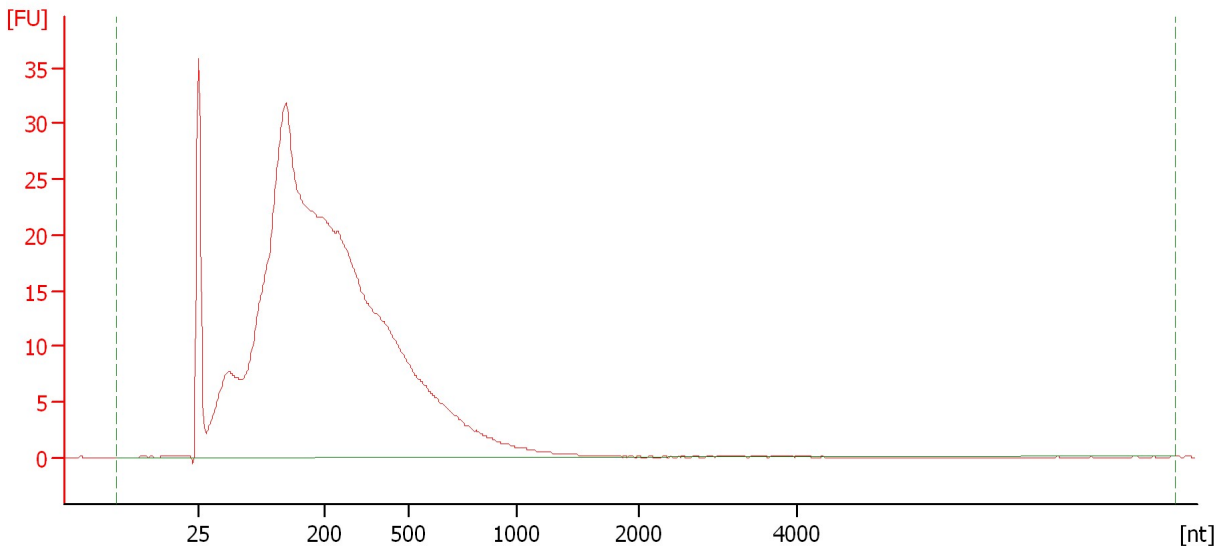
RNA Area:	265.6	Result Flagging Color:	
RNA Concentration:	1,000 pg/μl	Result Flagging Label:	All Other Samples

Assay Class: Eukaryote Total RNA Pico
Data Path: C:\...ents and Settings\Bioanalyzer\2012-04-30\2012-04-30_002.xad

Created: 4/30/2012 12:11:35 PM
Modified: 4/30/2012 12:34:34 PM

Electropherogram Summary Continued ...

cDNA EM-HI BR3-20H



Overall Results for sample 1 : cDNA EM-HI BR3-20H

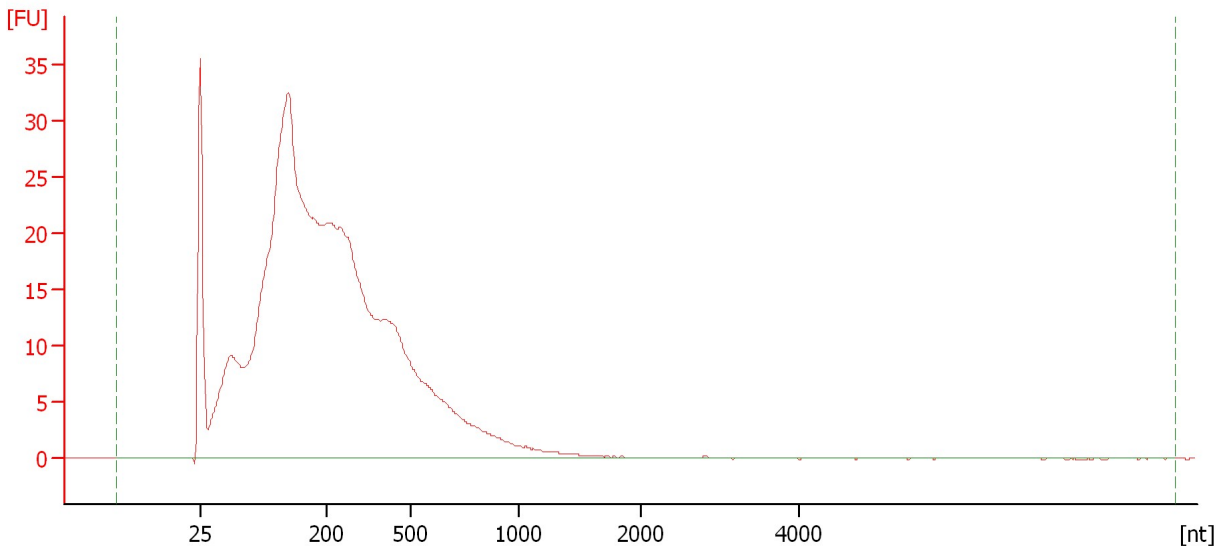
RNA Area:	571.5	RNA Integrity Number (RIN):	2.4 (B.02.08)
RNA Concentration:	2,152 pg/μl	Result Flagging Color:	
rRNA Ratio [28s / 18s]:	0.0	Result Flagging Label:	RIN: 2.40

Assay Class: Eukaryote Total RNA Pico
Data Path: C:\...ents and Settings\Bioanalyzer\2012-04-30\2012-04-30_002.xad

Created: 4/30/2012 12:11:35 PM
Modified: 4/30/2012 12:34:34 PM

Electropherogram Summary Continued ...

cDNA EM-HI BR1-10H



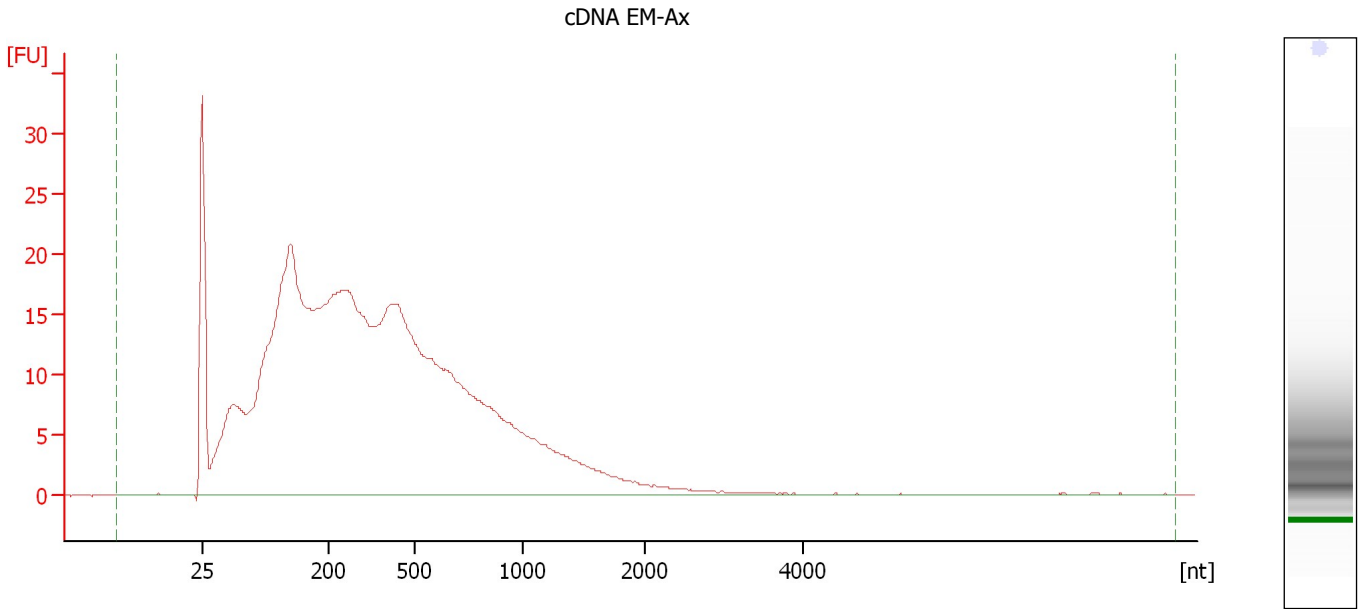
Overall Results for sample 2 : cDNA EM-HI BR1-10H

RNA Area:	583.0	RNA Integrity Number (RIN):	2.4 (B.02.08)
RNA Concentration:	2,195 pg/μl	Result Flagging Color:	
rRNA Ratio [28s / 18s]:	0.0	Result Flagging Label:	RIN: 2.40

Assay Class: Eukaryote Total RNA Pico
Data Path: C:\...ents and Settings\Bioanalyzer\2012-04-30\2012-04-30_002.xad

Created: 4/30/2012 12:11:35 PM
Modified: 4/30/2012 12:34:34 PM

Electropherogram Summary Continued ...



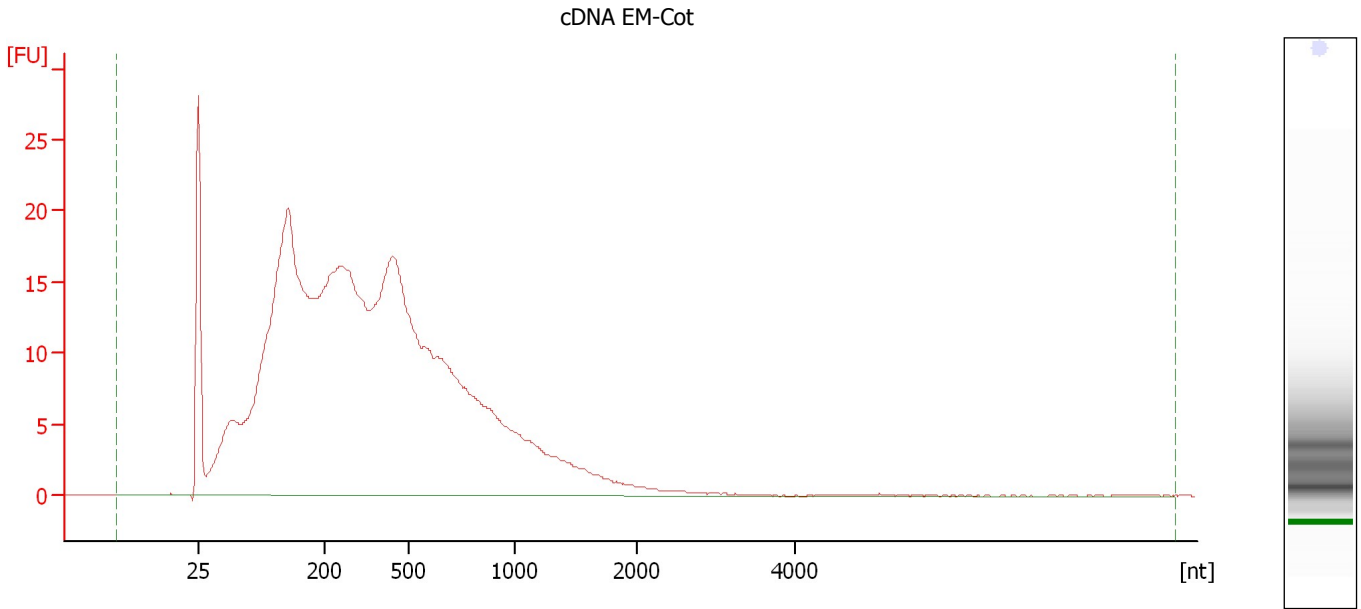
Overall Results for sample 3 : cDNA EM-Ax

RNA Area:	606.5	RNA Integrity Number (RIN):	2.4 (B.02.08)
RNA Concentration:	2,284 pg/μl	Result Flagging Color:	
rRNA Ratio [28s / 18s]:	0.0	Result Flagging Label:	RIN: 2.40

Assay Class: Eukaryote Total RNA Pico
Data Path: C:\...ents and Settings\Bioanalyzer\2012-04-30\2012-04-30_002.xad

Created: 4/30/2012 12:11:35 PM
Modified: 4/30/2012 12:34:34 PM

Electropherogram Summary Continued ...



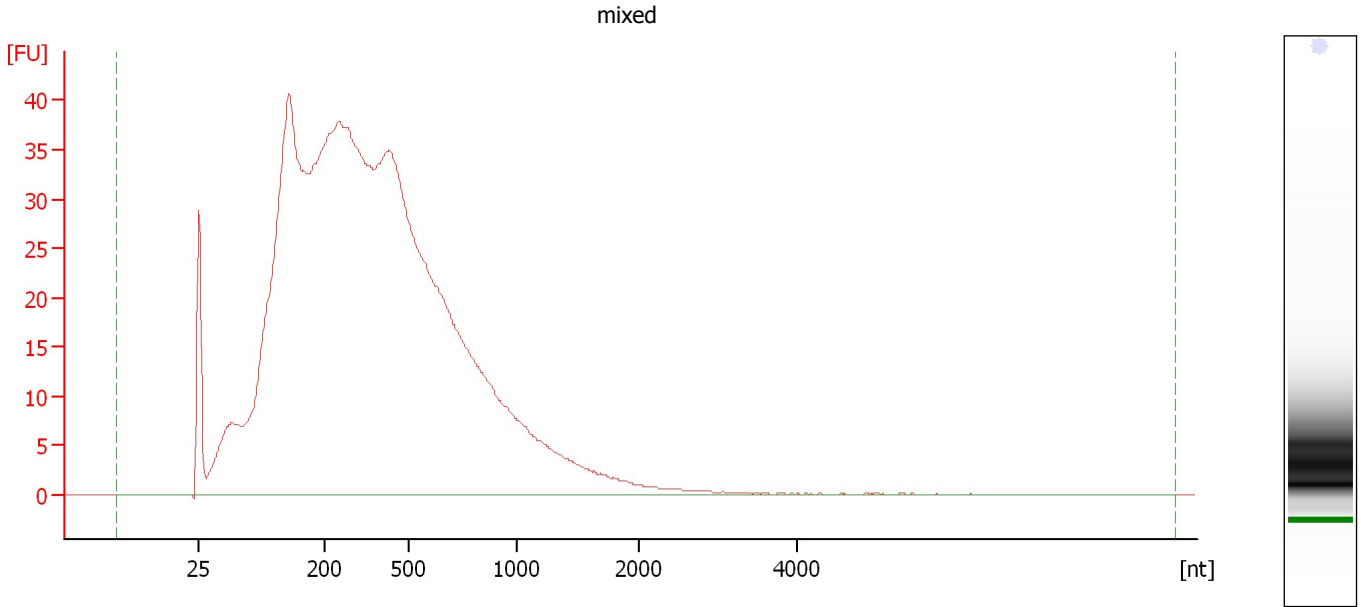
Overall Results for sample 4 : cDNA EM-Cot

RNA Area:	542.6	RNA Integrity Number (RIN):	2.2 (B.02.08)
RNA Concentration:	2,043 pg/μl	Result Flagging Color:	
rRNA Ratio [28s / 18s]:	0.0	Result Flagging Label:	RIN: 2.20

Assay Class: Eukaryote Total RNA Pico
Data Path: C:\...ents and Settings\Bioanalyzer\2012-04-30\2012-04-30_002.xad

Created: 4/30/2012 12:11:35 PM
Modified: 4/30/2012 12:34:34 PM

Electropherogram Summary Continued ...



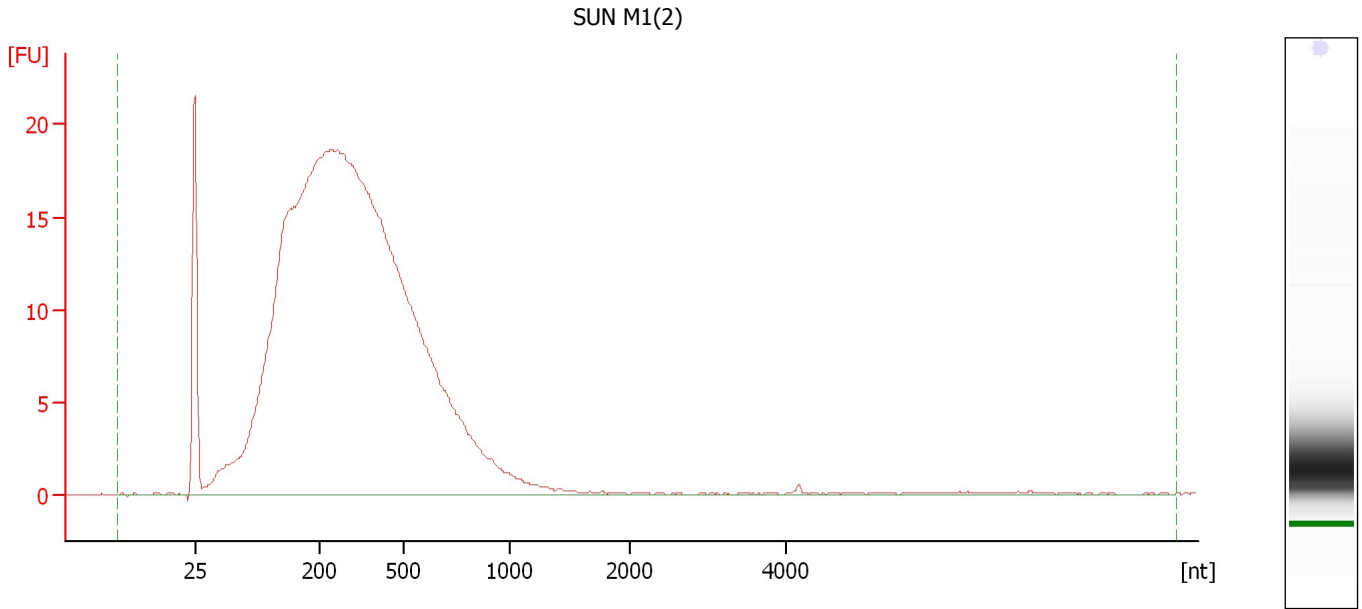
Overall Results for sample 5 : mixed

RNA Area:	1,125.9	RNA Integrity Number (RIN):	2 (B.02.08)
RNA Concentration:	4,240 pg/μl	Result Flagging Color:	
rRNA Ratio [28s / 18s]:	0.0	Result Flagging Label:	RIN:2

Assay Class: Eukaryote Total RNA Pico
Data Path: C:\...ents and Settings\Bioanalyzer\2012-04-30\2012-04-30_002.xad

Created: 4/30/2012 12:11:35 PM
Modified: 4/30/2012 12:34:34 PM

Electropherogram Summary Continued ...



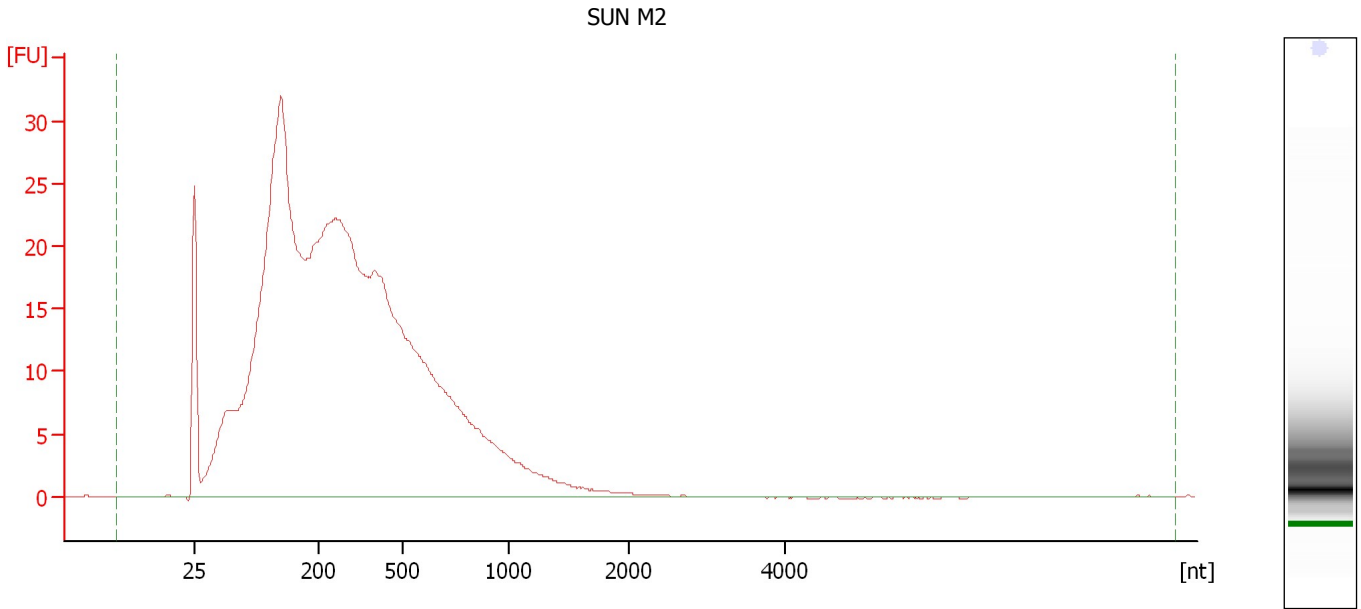
Overall Results for sample 6 : SUN M1(2)

RNA Area:	445.1	RNA Integrity Number (RIN):	5.6 (B.02.08)
RNA Concentration:	1,676 µg/µl	Result Flagging Color:	
rRNA Ratio [28s / 18s]:	0.0	Result Flagging Label:	RIN: 5.60

Assay Class: Eukaryote Total RNA Pico
Data Path: C:\...ents and Settings\Bioanalyzer\2012-04-30\2012-04-30_002.xad

Created: 4/30/2012 12:11:35 PM
Modified: 4/30/2012 12:34:34 PM

Electropherogram Summary Continued ...



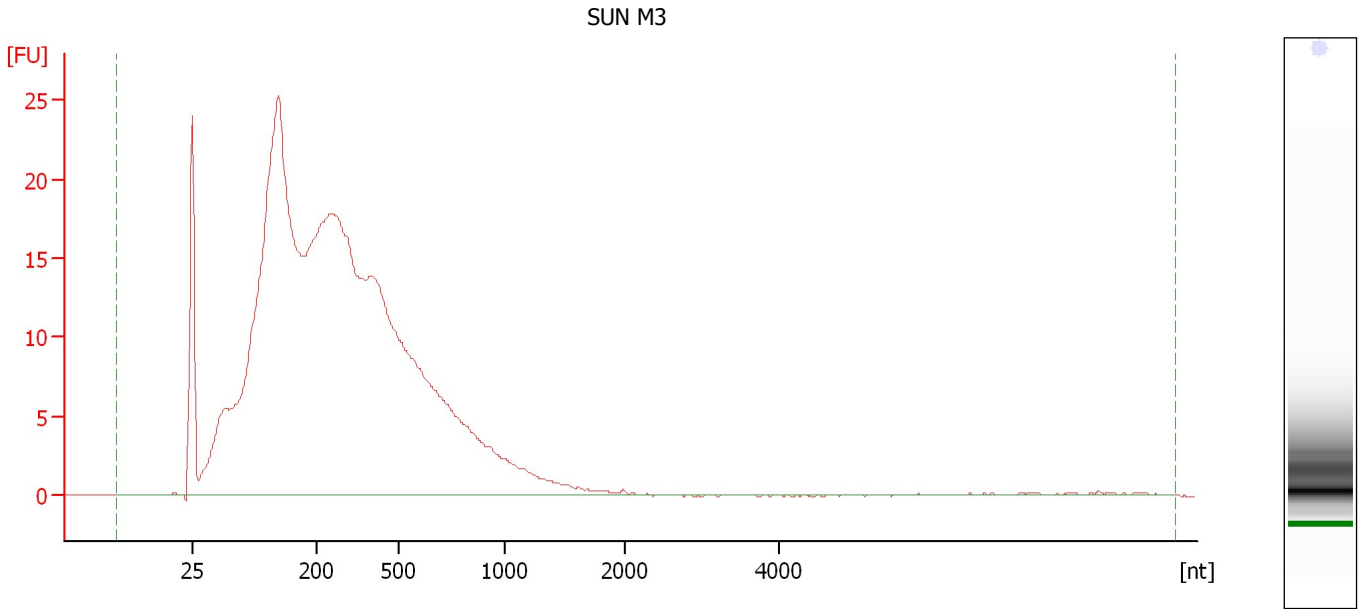
Overall Results for sample 7 : SUN M2

RNA Area:	662.3	RNA Integrity Number (RIN):	2.6 (B.02.08)
RNA Concentration:	2,494 pg/μl	Result Flagging Color:	
rRNA Ratio [28s / 18s]:	0.0	Result Flagging Label:	RIN: 2.60

Assay Class: Eukaryote Total RNA Pico
Data Path: C:\...ents and Settings\Bioanalyzer\2012-04-30\2012-04-30_002.xad

Created: 4/30/2012 12:11:35 PM
Modified: 4/30/2012 12:34:34 PM

Electropherogram Summary Continued ...



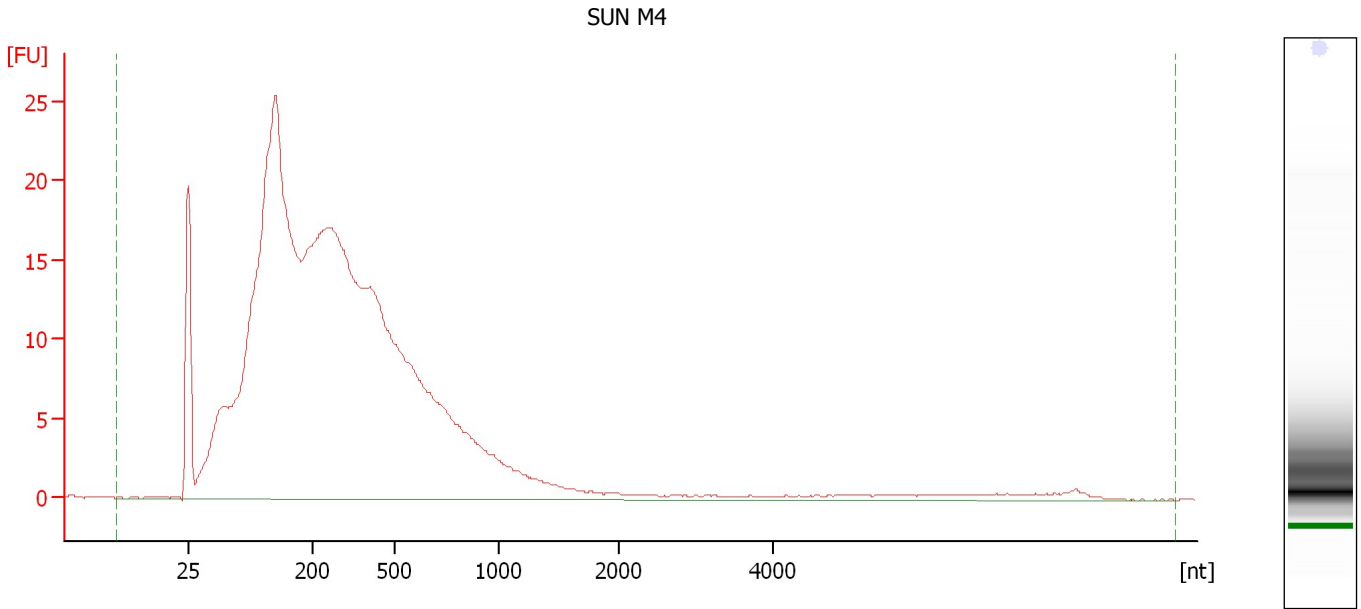
Overall Results for sample 8 : SUN M3

RNA Area:	518.9	RNA Integrity Number (RIN):	2.2 (B.02.08)
RNA Concentration:	1,954 pg/μl	Result Flagging Color:	
rRNA Ratio [28s / 18s]:	0.0	Result Flagging Label:	RIN: 2.20

Assay Class: Eukaryote Total RNA Pico
Data Path: C:\...ents and Settings\Bioanalyzer\2012-04-30\2012-04-30_002.xad

Created: 4/30/2012 12:11:35 PM
Modified: 4/30/2012 12:34:34 PM

Electropherogram Summary Continued ...



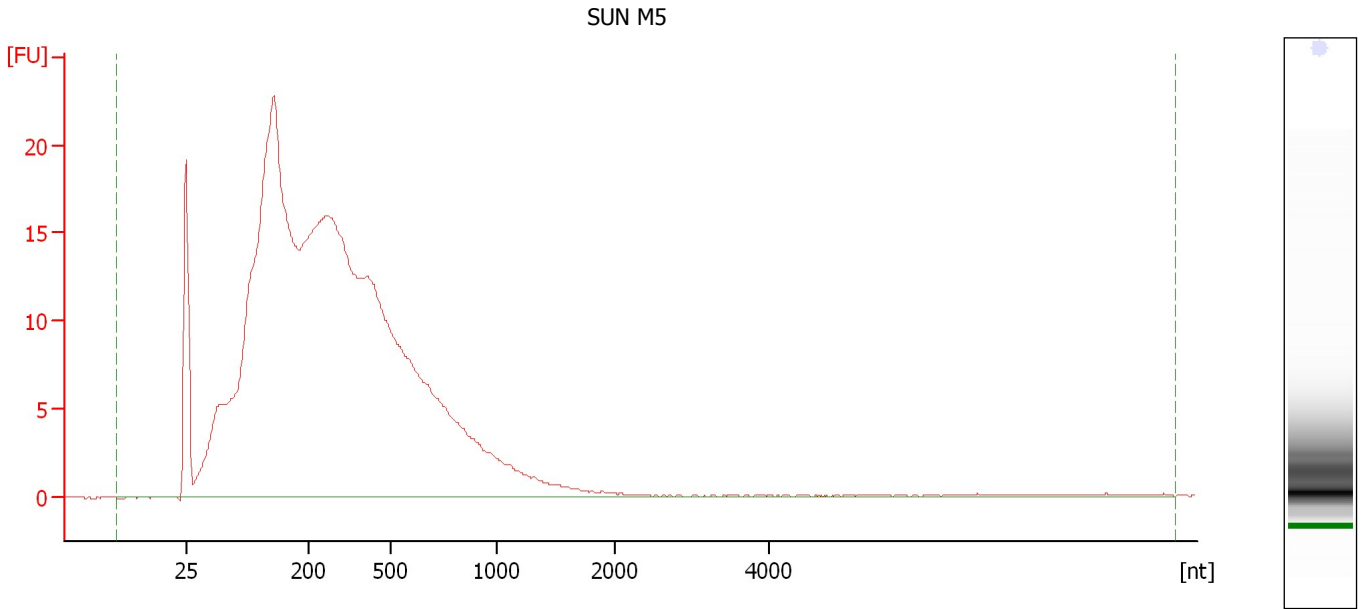
Overall Results for sample 9 : SUN M4

RNA Area:	532.2	RNA Integrity Number (RIN):	2.2 (B.02.08)
RNA Concentration:	2,004 pg/μl	Result Flagging Color:	
rRNA Ratio [28s / 18s]:	0.0	Result Flagging Label:	RIN: 2.20

Assay Class: Eukaryote Total RNA Pico
Data Path: C:\...ents and Settings\Bioanalyzer\2012-04-30\2012-04-30_002.xad

Created: 4/30/2012 12:11:35 PM
Modified: 4/30/2012 12:34:34 PM

Electropherogram Summary Continued ...



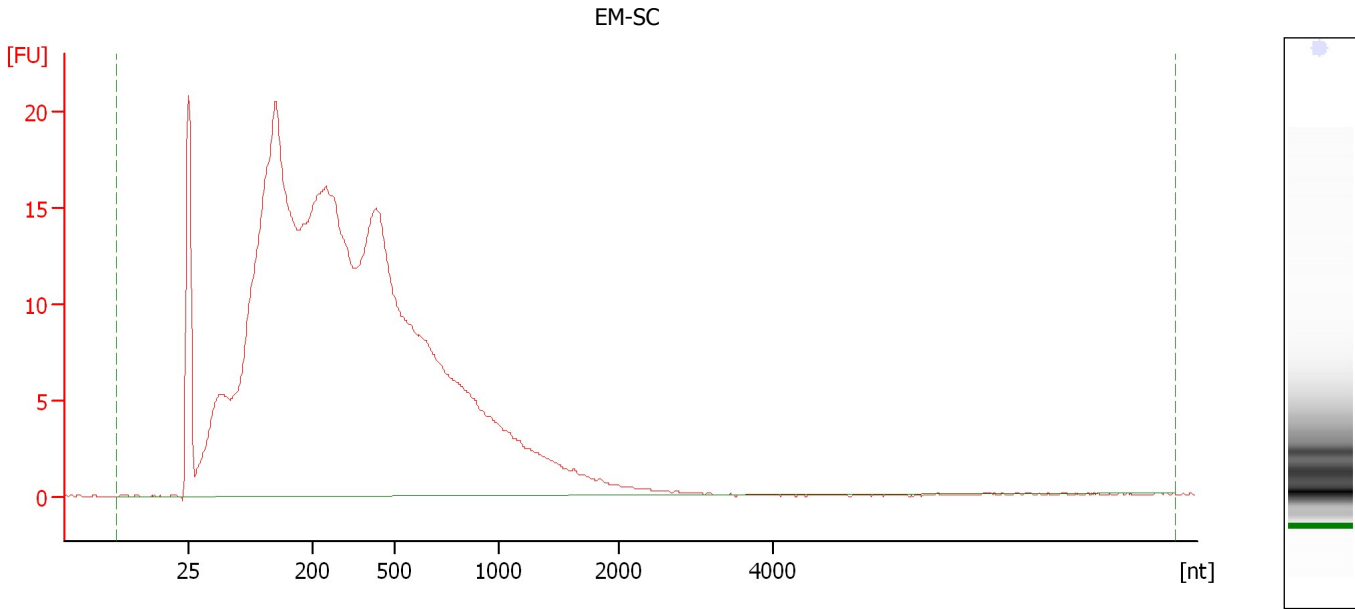
Overall Results for sample 10 : SUN M5

RNA Area:	485.8	RNA Integrity Number (RIN):	2.2 (B.02.08)
RNA Concentration:	1,829 pg/μl	Result Flagging Color:	
rRNA Ratio [28s / 18s]:	0.0	Result Flagging Label:	RIN: 2.20

Assay Class: Eukaryote Total RNA Pico
Data Path: C:\...ents and Settings\Bioanalyzer\2012-04-30\2012-04-30_002.xad

Created: 4/30/2012 12:11:35 PM
Modified: 4/30/2012 12:34:34 PM

Electropherogram Summary Continued ...



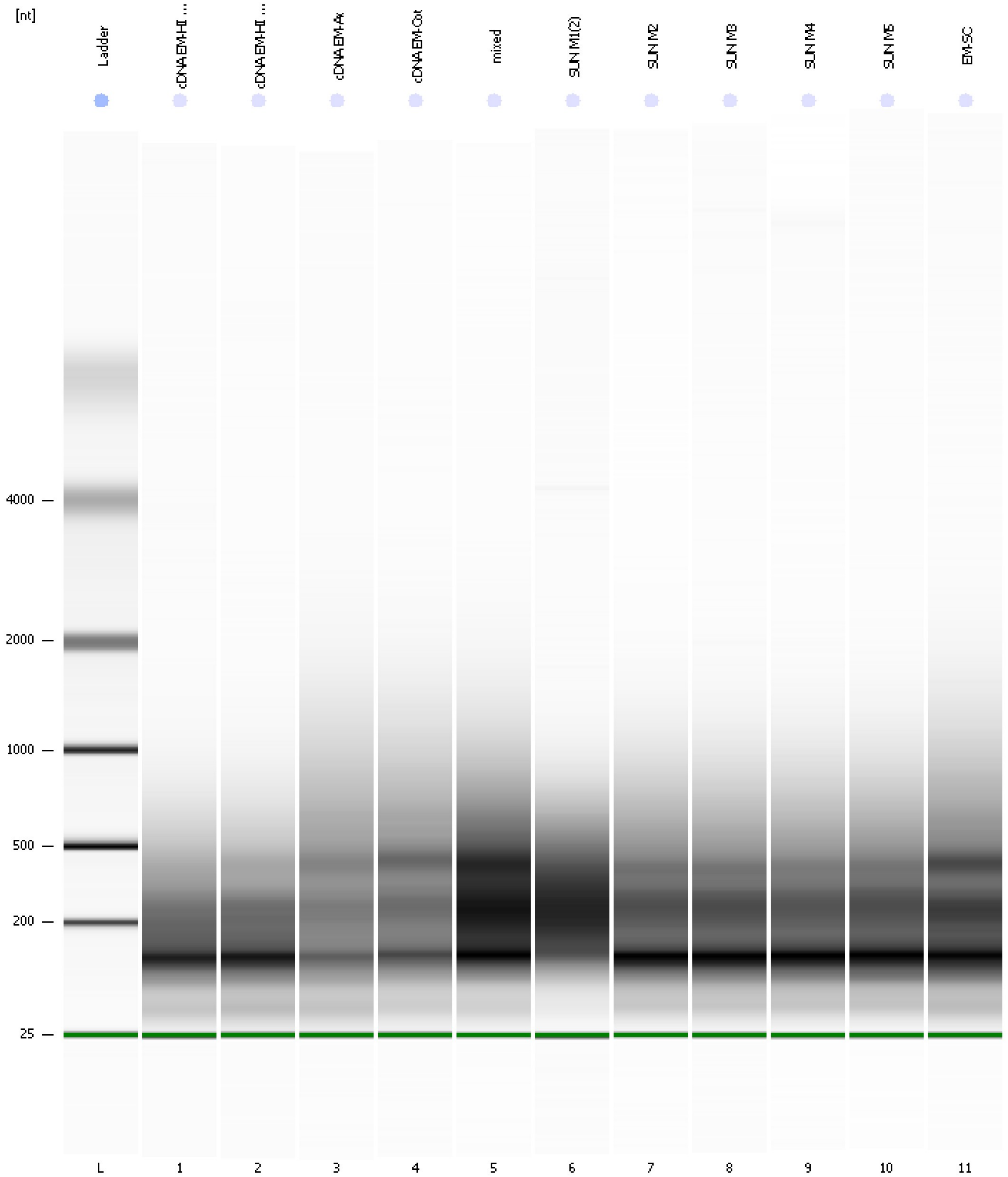
Overall Results for sample 11 : EM-SC

RNA Area:	511.1	RNA Integrity Number (RIN):	2.2 (B.02.08)
RNA Concentration:	1,925 pg/μl	Result Flagging Color:	
rRNA Ratio [28s / 18s]:	0.0	Result Flagging Label:	RIN: 2.20

Assay Class: Eukaryote Total RNA Pico
Data Path: C:\...ents and Settings\Bioanalyzer\2012-04-30\2012-04-30_002.xad

Created: 4/30/2012 12:11:35 PM
Modified: 4/30/2012 12:34:34 PM

Gel Image



Assay Class: Eukaryote Total RNA Pico
 Data Path: C:\...ents and Settings\Bioanalyzer\2012-04-30\2012-04-30_002.xad

Created: 4/30/2012 12:11:35 PM
 Modified: 4/30/2012 12:34:34 PM

Run Logbook

Description	Number	Source	Category	Sub Category	Time	Time Zone	User	Host
Run ended on port 1 (Number of wells acquired: 12)		Instrument	Run		4/30/2012 12:34:30 PM	(GMT --07:00) Pacific Standard Time	UC Davis	D8XSMGH1
Run started on port 1 (File: C:\Documents and Settings\Bioanalyzer\2012-04-30\2012-04-30_002.xad)		Instrument	Run		4/30/2012 12:11:40 PM	(GMT --07:00) Pacific Standard Time	UC Davis	D8XSMGH1
Product Number : G2938B		Instrument	Run		4/30/2012 12:11:40 PM	(GMT --07:00) Pacific Standard Time	UC Davis	D8XSMGH1
Name :		Instrument	Run		4/30/2012 12:11:40 PM	(GMT --07:00) Pacific Standard Time	UC Davis	D8XSMGH1
Vendor : Agilent Technologies		Instrument	Run		4/30/2012 12:11:40 PM	(GMT --07:00) Pacific Standard Time	UC Davis	D8XSMGH1
Serial# : DE13701086		Instrument	Run		4/30/2012 12:11:40 PM	(GMT --07:00) Pacific Standard Time	UC Davis	D8XSMGH1
Firmware : C.01.069		Instrument	Run		4/30/2012 12:11:40 PM	(GMT --07:00) Pacific Standard Time	UC Davis	D8XSMGH1
Cartridge : Electrode		Instrument	Run		4/30/2012 12:11:40 PM	(GMT --07:00) Pacific Standard Time	UC Davis	D8XSMGH1