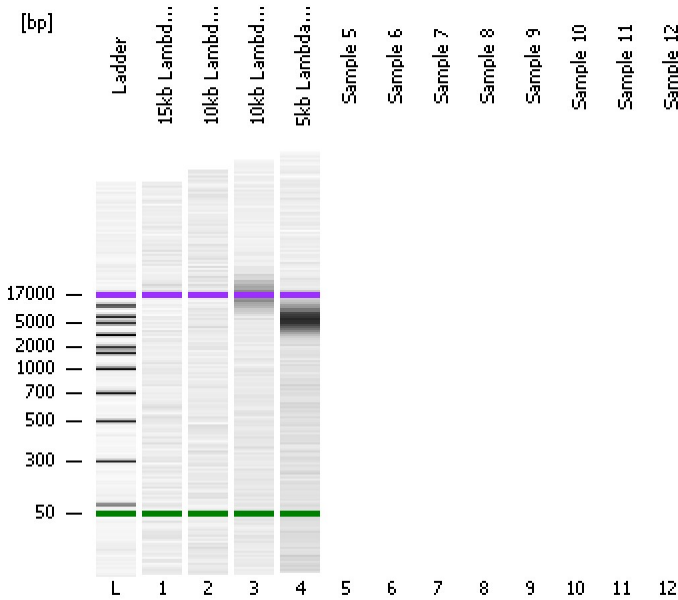


Assay Class: DNA 12000
Data Path: C:\...ents and Settings\Bioanalyzer\2012-05-01\2012-05-01_003.xad

Created: 5/1/2012 11:15:11 AM
Modified: 5/1/2012 11:52:02 AM

Electrophoresis File Run Summary



Instrument Information:

Instrument Name: DE13701086 Firmware: C.01.069
Serial#: DE13701086 Type: G2938B

Assay Information:

Assay Origin Path: C:\Program Files\Agilent\2100 bioanalyzer\2100 expert\assays\dsDNA\DNA 12000 Series II.xsy

Assay Class: DNA 12000

Version: 2.4

Assay Comments: DNA Analysis 100 -12000 bp

© Copyright 2003-2009 Agilent Technologies, Inc.

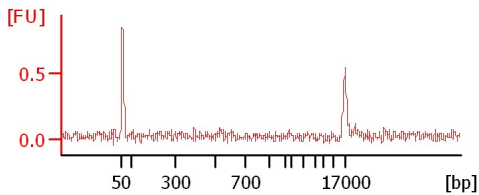
Chip Information:

Chip Lot #:

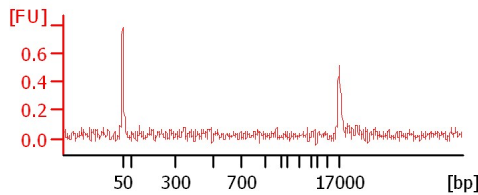
Reagent Kit Lot #:

Chip Comments:

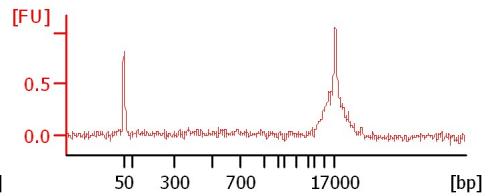
15kb Lambda DNA 4/30/12 #1



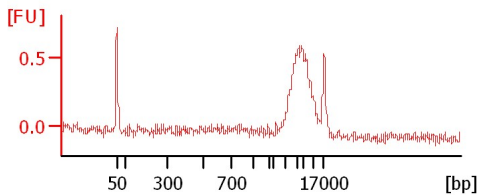
10kb Lambda DNA 4/30/12 #2



10kb Lambda DNA 4/30/12 #3



5kb Lambda DNA 4/30/12 #5



Assay Class: DNA 12000
 Data Path: C:\...ents and Settings\Bioanalyzer\2012-05-01\2012-05-01_003.xad

Created: 5/1/2012 11:15:11 AM
 Modified: 5/1/2012 11:52:02 AM

Electrophoresis File Run Summary (Chip Summary)

Sample Name	Sample Comment	Rest. Digest	Status	Observation	Result Label	Result Color
15kb Lambda DNA 4/30/12 #1		<input type="checkbox"/>	✓			
10kb Lambda DNA 4/30/12 #2		<input type="checkbox"/>	✓			
10kb Lambda DNA 4/30/12 #3		<input type="checkbox"/>	✓			
5kb Lambda DNA 4/30/12 #5		<input type="checkbox"/>	✓			
Sample 5		<input type="checkbox"/>				
Sample 6		<input type="checkbox"/>				
Sample 7		<input type="checkbox"/>				
Sample 8		<input type="checkbox"/>				
Sample 9		<input type="checkbox"/>				
Sample 10		<input type="checkbox"/>				
Sample 11		<input type="checkbox"/>				
Sample 12		<input type="checkbox"/>				
Ladder		<input type="checkbox"/>	✓			

Chip Lot #

Reagent Kit Lot #

Chip Comments :

Assay Class: DNA 12000
Data Path: C:\...ents and Settings\Bioanalyzer\2012-05-01\2012-05-01_003.xad

Created: 5/1/2012 11:15:11 AM
Modified: 5/1/2012 11:52:02 AM

Electrophoresis Assay Details

General Analysis Settings

Number of Available Sample and Ladder Wells (Max.) : 13
Minimum Visible Range [s] : 20
Maximum Visible Range [s] : 99
Start Analysis Time Range [s] : 20
End Analysis Time Range [s] : 98.95
Ladder Concentration [ng/μl] : 44
Uses Standard Area for Ladder Fragments
Lower Marker Concentration [ng/μl] : 8.3
Upper Marker Concentration [ng/μl] : 4.2
Used Upper Marker for Quantitation
This is a Qualitative Assay Only
Standard Curve Fit is Point to Point
Show Data Aligned to Lower and Upper Marker

Integrator Settings

Integration Start Time [s] : 20
Integration End Time [s] : 98.95
Slope Threshold : 0.8
Height Threshold [FU] : 20
Area Threshold : 0.1
Width Threshold [s] : 0.5
Baseline Plateau [s] : 0.5

Filter Settings

Filter Width [s] : 0.5
Polynomial Order : 4

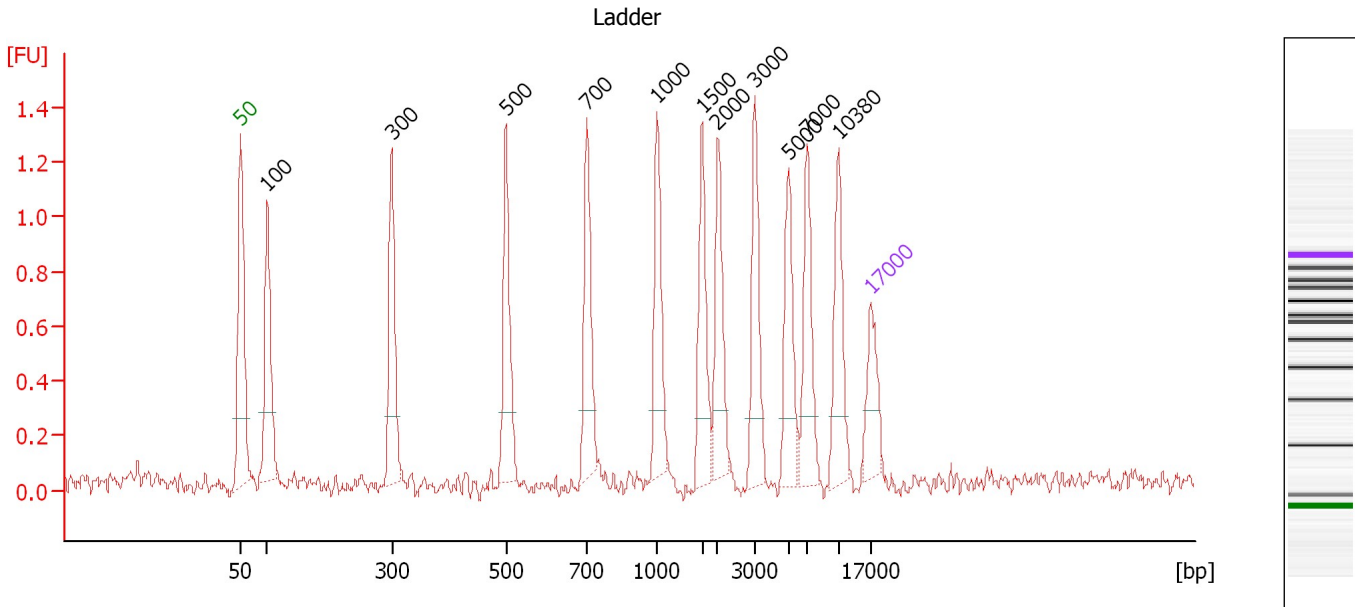
Ladder

Ladder Peak	Size	Area
1	50	120
2	100	48
3	300	61
4	500	77
5	700	81
6	1000	86
7	1500	92
8	2000	92
9	3000	96
10	5000	100
11	7000	98
12	10380	102
13	17000	110

Assay Class: DNA 12000
 Data Path: C:\...ents and Settings\Bioanalyzer\2012-05-01\2012-05-01_003.xad

Created: 5/1/2012 11:15:11 AM
 Modified: 5/1/2012 11:52:02 AM

Electropherogram Summary



Peak table for Ladder

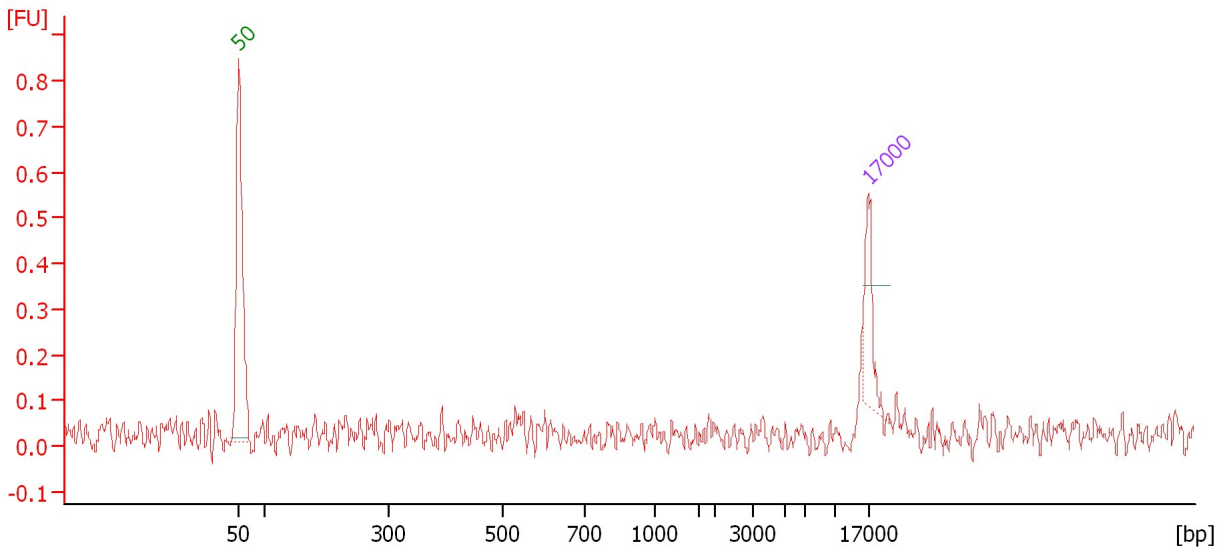
Peak	Size [bp]	Conc. [ng/μl]	Molarity [nmol/l]	Observations
1	50	8.30	251.5	Lower Marker
2	100	4.00	60.6	Ladder Peak
3	300	4.00	20.2	Ladder Peak
4	500	4.00	12.1	Ladder Peak
5	700	4.00	8.7	Ladder Peak
6	1,000	4.00	6.1	Ladder Peak
7	1,500	4.00	4.0	Ladder Peak
8	2,000	4.00	3.0	Ladder Peak
9	3,000	4.00	2.0	Ladder Peak
10	5,000	4.00	1.2	Ladder Peak
11	7,000	4.00	0.9	Ladder Peak
12	10,380	4.00	0.6	Ladder Peak
13	17,000	4.20	0.4	Upper Marker

Assay Class: DNA 12000
 Data Path: C:\...ents and Settings\Bioanalyzer\2012-05-01\2012-05-01_003.xad

Created: 5/1/2012 11:15:11 AM
 Modified: 5/1/2012 11:52:02 AM

Electropherogram Summary Continued ...

15kb Lambda DNA 4/30/12 #1



Setpoint Deviations for sample 1 : 15kb Lambda DNA 4/30/12 #1

Height Threshold [FU] : 0.01 Width Threshold [s] : 0.01

Overall Results for sample 1 : 15kb Lambda DNA 4/30/12 #1

Number of peaks found: 0

Peak table for sample 1 : 15kb Lambda DNA 4/30/12 #1

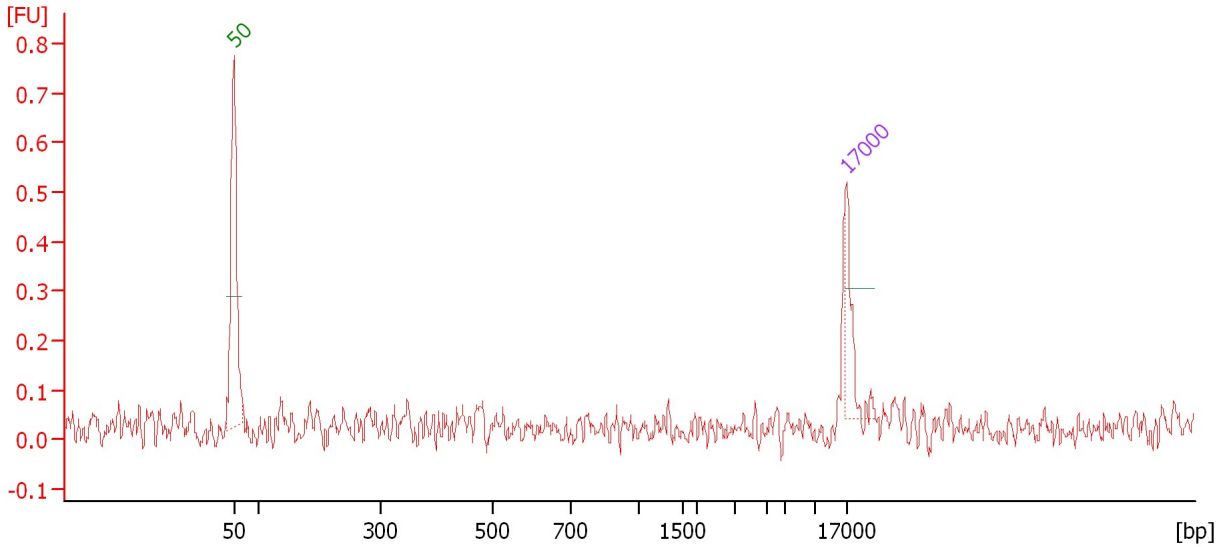
Peak	Size [bp]	Conc. [ng/μl]	Molarity [nmol/l]	Observations
1	50	8.30	251.5	Lower Marker
2	17,000	4.20	0.4	Upper Marker

Assay Class: DNA 12000
Data Path: C:\...ents and Settings\Bioanalyzer\2012-05-01\2012-05-01_003.xad

Created: 5/1/2012 11:15:11 AM
Modified: 5/1/2012 11:52:02 AM

Electropherogram Summary Continued ...

10kb Lambda DNA 4/30/12 #2



Setpoint Deviations for sample 2 : 10kb Lambda DNA 4/30/12 #2

Height Threshold [FU] : 0.2

Overall Results for sample 2 : 10kb Lambda DNA 4/30/12 #2

Number of peaks found: 0

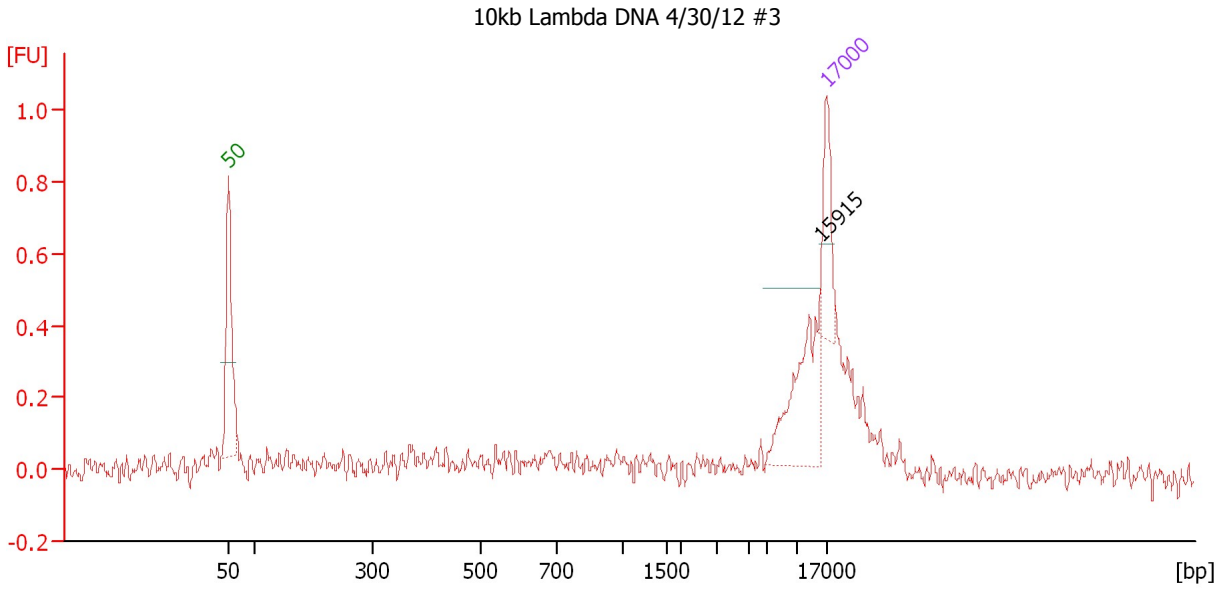
Peak table for sample 2 : 10kb Lambda DNA 4/30/12 #2

Peak	Size [bp]	Conc. [ng/μl]	Molarity [nmol/l]	Observations
1	50	8.30	251.5	Lower Marker
2	17,000	4.20	0.4	Upper Marker

Assay Class: DNA 12000
Data Path: C:\...ents and Settings\Bioanalyzer\2012-05-01\2012-05-01_003.xad

Created: 5/1/2012 11:15:11 AM
Modified: 5/1/2012 11:52:02 AM

Electropherogram Summary Continued ...



Setpoint Deviations for sample 3 : 10kb Lambda DNA 4/30/12 #3

Height Threshold [FU] : 0.5

Overall Results for sample 3 : 10kb Lambda DNA 4/30/12 #3

Number of peaks found: 1

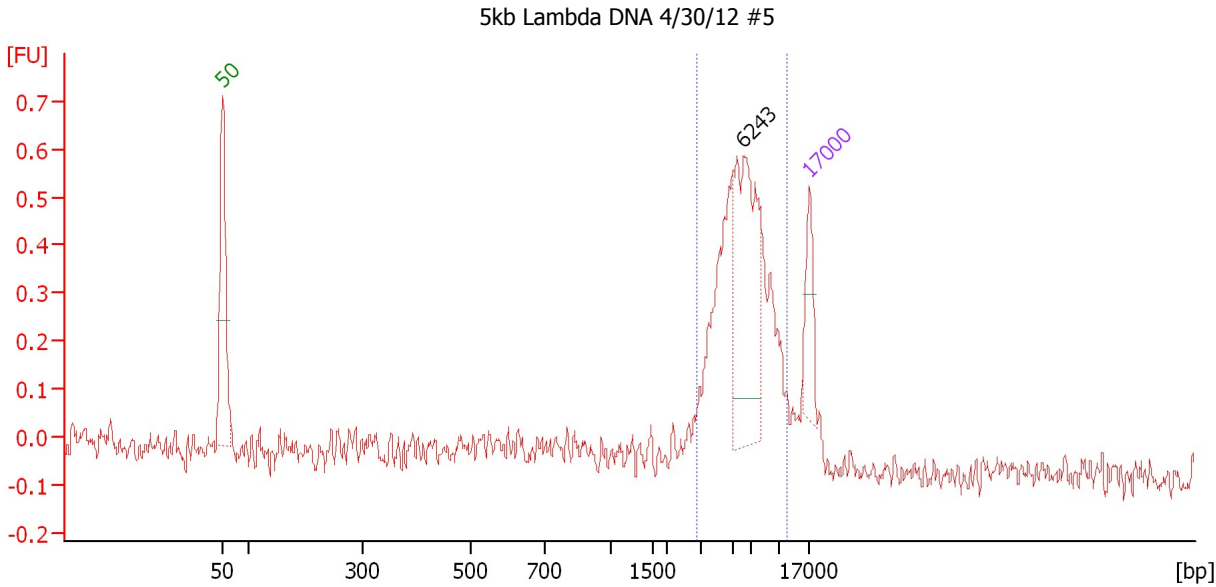
Peak table for sample 3 : 10kb Lambda DNA 4/30/12 #3

Peak	Size [bp]	Conc. [ng/μl]	Molarity [nmol/l]	Observations
1	50	8.30	251.5	Lower Marker
2	15,915	8.63	0.8	
3	17,000	4.20	0.4	Upper Marker

Assay Class: DNA 12000
 Data Path: C:\...ents and Settings\Bioanalyzer\2012-05-01\2012-05-01_003.xad

Created: 5/1/2012 11:15:11 AM
 Modified: 5/1/2012 11:52:02 AM

Electropherogram Summary Continued ...



Setpoint Deviations for sample 4 : 5kb Lambda DNA 4/30/12 #5

Height Threshold [FU] : 0.1 Width Threshold [s] : 0.2

Overall Results for sample 4 : 5kb Lambda DNA 4/30/12 #5

Number of peaks found: 1 Area 1: 2.5

Peak table for sample 4 : 5kb Lambda DNA 4/30/12 #5

Peak	Size [bp]	Conc. [ng/μl]	Molarity [nmol/l]	Observations
1	50	8.30	251.5	Lower Marker
2	6,243	16.99	4.1	
3	17,000	4.20	0.4	Upper Marker

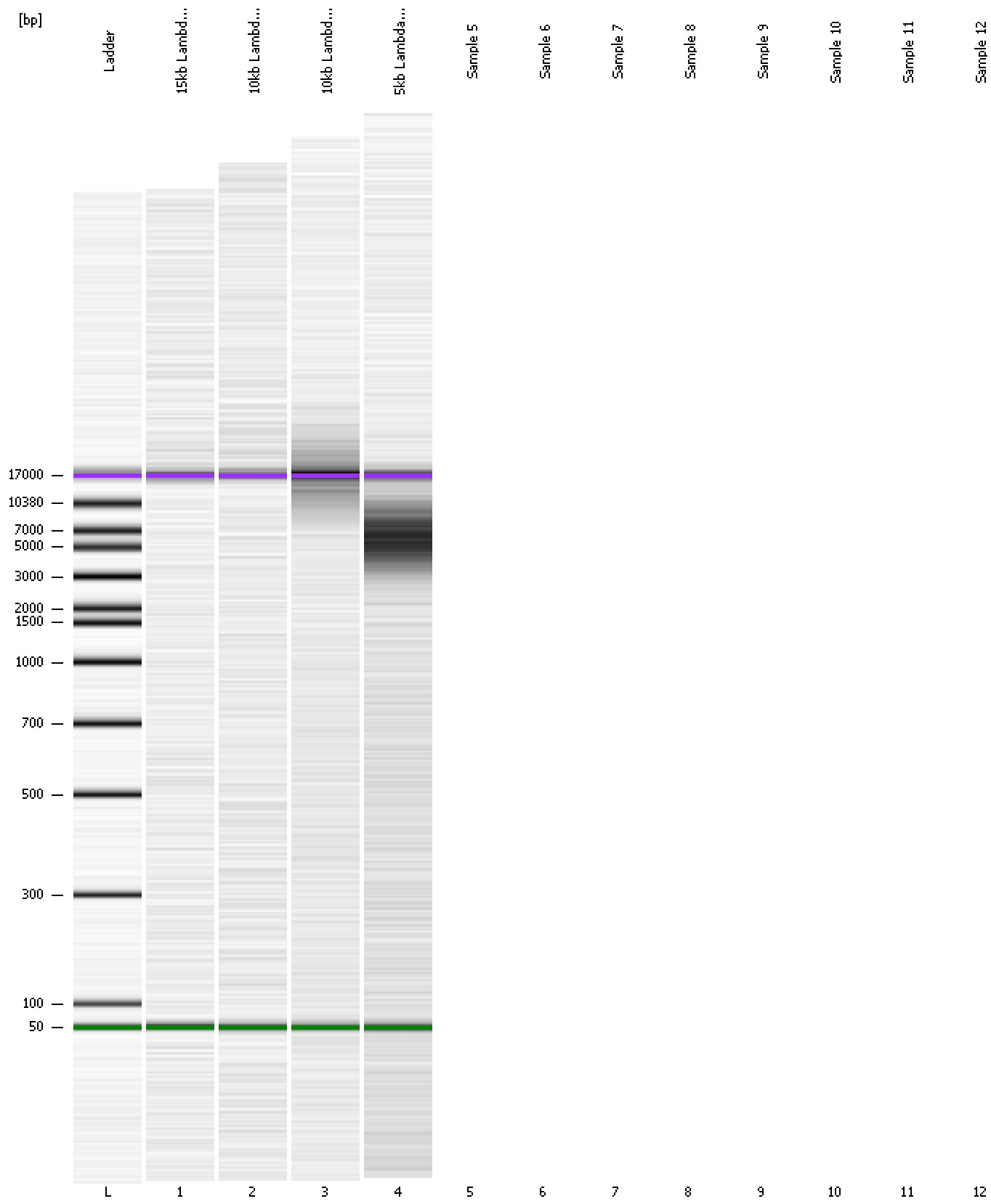
Region table for sample 4 : 5kb Lambda DNA 4/30/12 #5

From [bp]	To [bp]	Area	% of Total	Average Size [bp]	Size distribution in CV [%]	Conc. [ng/μl]	Col or
2,890	12,136	2.5	82	6,370	33.2	37.92	■

Assay Class: DNA 12000
Data Path: C:\...ents and Settings\Bioanalyzer\2012-05-01\2012-05-01_003.xad

Created: 5/1/2012 11:15:11 AM
Modified: 5/1/2012 11:52:02 AM

Gel Image



Assay Class: DNA 12000
 Data Path: C:\...ents and Settings\Bioanalyzer\2012-05-01\2012-05-01_003.xad

Created: 5/1/2012 11:15:11 AM
 Modified: 5/1/2012 11:52:02 AM

Run Logbook

Description	Number	Source	Category	Sub Category	Time	Time Zone	User	Host
Run ended on port 1 (Number of wells acquired: 5)		Instrument	Run		5/1/2012 11:33:08 AM	(GMT --07:00) Pacific Standard Time	UC Davis	D8XSMGH1
Run started on port 1 (File: C:\Documents and Settings\Bioanalyzer\2012-05-01\2012-05-01_003.xad)		Instrument	Run		5/1/2012 11:15:12 AM	(GMT --07:00) Pacific Standard Time	UC Davis	D8XSMGH1
Product Number : G2938B		Instrument	Run		5/1/2012 11:15:12 AM	(GMT --07:00) Pacific Standard Time	UC Davis	D8XSMGH1
Name :		Instrument	Run		5/1/2012 11:15:12 AM	(GMT --07:00) Pacific Standard Time	UC Davis	D8XSMGH1
Vendor : Agilent Technologies		Instrument	Run		5/1/2012 11:15:12 AM	(GMT --07:00) Pacific Standard Time	UC Davis	D8XSMGH1
Serial# : DE13701086		Instrument	Run		5/1/2012 11:15:12 AM	(GMT --07:00) Pacific Standard Time	UC Davis	D8XSMGH1
Firmware : C.01.069		Instrument	Run		5/1/2012 11:15:12 AM	(GMT --07:00) Pacific Standard Time	UC Davis	D8XSMGH1
Cartridge : Electrode		Instrument	Run		5/1/2012 11:15:12 AM	(GMT --07:00) Pacific Standard Time	UC Davis	D8XSMGH1