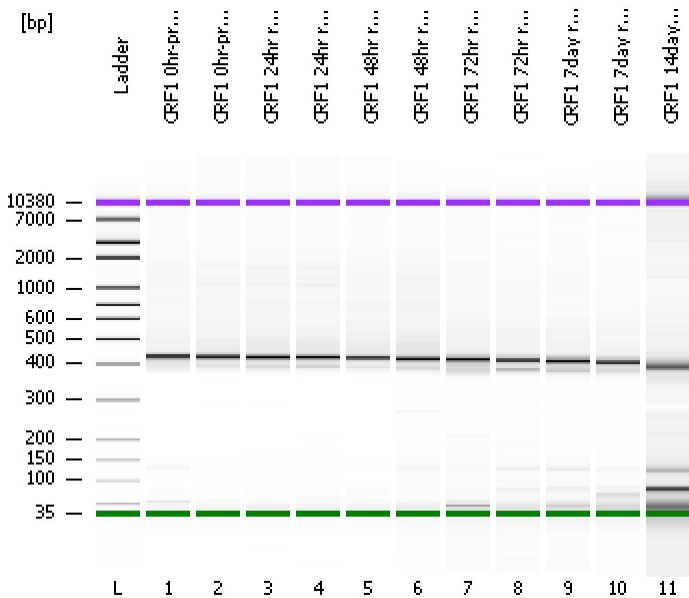


Assay Class: High Sensitivity DNA Assay
 Data Path: C:\...ents and Settings\Bioanalyzer\2012-05-01\2012-05-01_005.xad

Created: 5/1/2012 3:12:07 PM
 Modified: 5/1/2012 3:54:30 PM

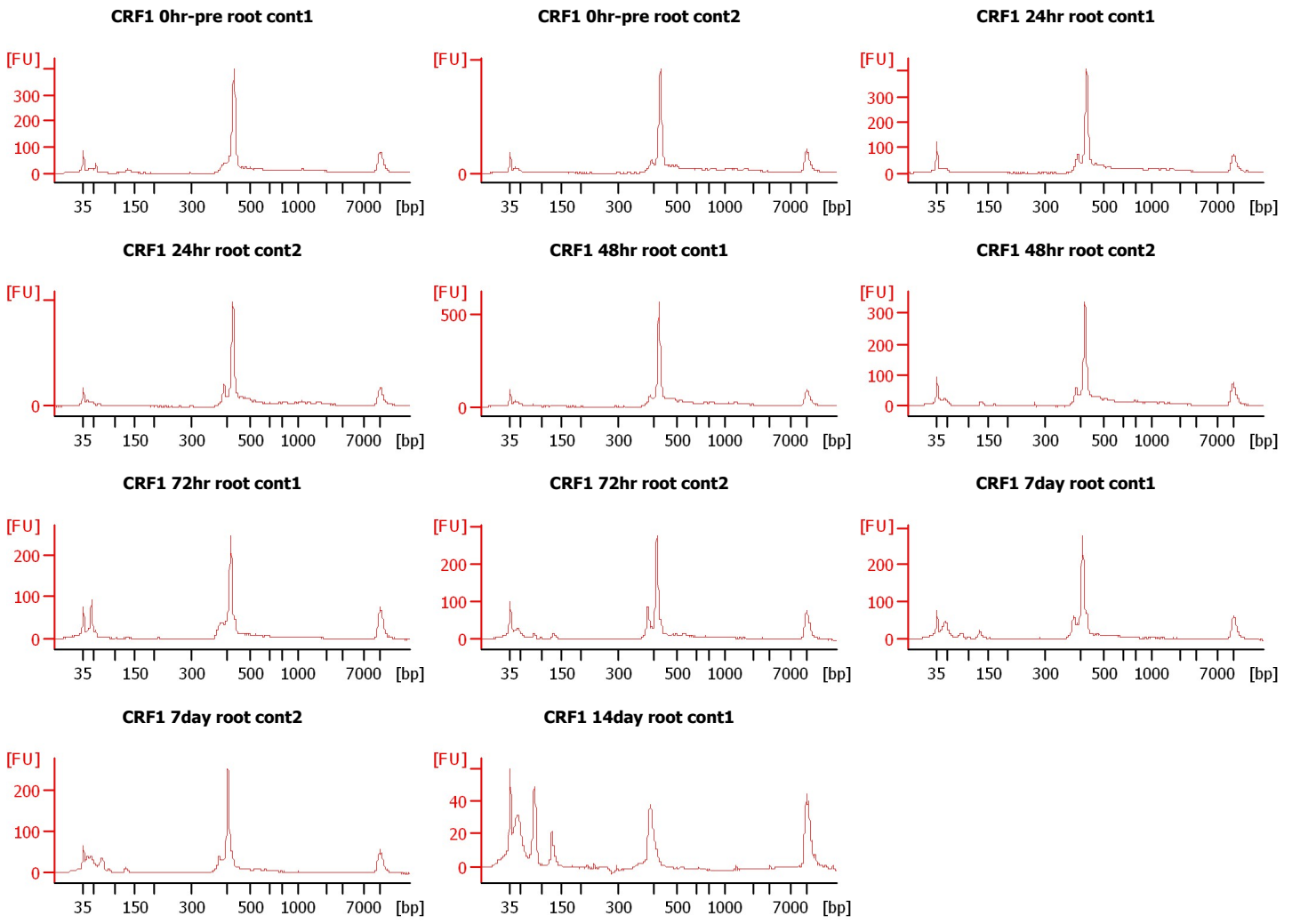
Electrophoresis File Run Summary



Instrument Information:
 Instrument Name: DE13701086 Firmware: C.01.069
 Serial#: DE13701086 Type: G2938B

Assay Information:
 Assay Origin Path: C:\Program Files\Agilent\2100 bioanalyzer\2100 expert\assays\dsDNA\High Sensitivity DNA.xsy
 Assay Class: High Sensitivity DNA Assay
 Version: 1.03
 Assay Comments: Copyright © 2003-2010 Agilent Technologies

Chip Information:
 Chip Lot #:
 Reagent Kit Lot #:
 Chip Comments:



Assay Class: High Sensitivity DNA Assay
Data Path: C:\...ents and Settings\Bioanalyzer\2012-05-01\2012-05-01_005.xad

Created: 5/1/2012 3:12:07 PM
Modified: 5/1/2012 3:54:30 PM

Electrophoresis File Run Summary (Chip Summary)

Sample Name	Sample Comment	Rest. Digest	Status	Observation	Result Label	Result Color
CRF1 0hr-pre root cont1		<input type="checkbox"/>	✓			
CRF1 0hr-pre root cont2		<input type="checkbox"/>	✓			
CRF1 24hr root cont1		<input type="checkbox"/>	✓			
CRF1 24hr root cont2		<input type="checkbox"/>	✓			
CRF1 48hr root cont1		<input type="checkbox"/>	✓			
CRF1 48hr root cont2		<input type="checkbox"/>	✓			
CRF1 72hr root cont1		<input type="checkbox"/>	✓			
CRF1 72hr root cont2		<input type="checkbox"/>	✓			
CRF1 7day root cont1		<input type="checkbox"/>	✓			
CRF1 7day root cont2		<input type="checkbox"/>	✓			
CRF1 14day root cont1		<input type="checkbox"/>	✓			
Ladder		<input type="checkbox"/>	✓			

Chip Lot #

Reagent Kit Lot #

Chip Comments :

Assay Class: High Sensitivity DNA Assay
 Data Path: C:\...ents and Settings\Bioanalyzer\2012-05-01\2012-05-01_005.xad

Created: 5/1/2012 3:12:07 PM
 Modified: 5/1/2012 3:54:30 PM

Electrophoresis Assay Details

General Analysis Settings

Number of Available Sample and Ladder Wells (Max.) : 12
 Minimum Visible Range [s] : 32
 Maximum Visible Range [s] : 138
 Start Analysis Time Range [s] : 33
 End Analysis Time Range [s] : 137.5
 Ladder Concentration [pg/μl] : 1950
 Uses Standard Area for Ladder Fragments
 Lower Marker Concentration [pg/μl] : 125
 Upper Marker Concentration [pg/μl] : 75
 Used Upper Marker for Quantitation
 Standard Curve Fit is Point to Point
 Show Data Aligned to Lower and Upper Marker

Integrator Settings

Integration Start Time [s] : 33.05
 Integration End Time [s] : 137
 Slope Threshold : 0.8
 Height Threshold [FU] : 15
 Area Threshold : 0.1
 Width Threshold [s] : 0.6
 Baseline Plateau [s] : 0.5

Filter Settings

Filter Width [s] : 0.5
 Polynomial Order : 4

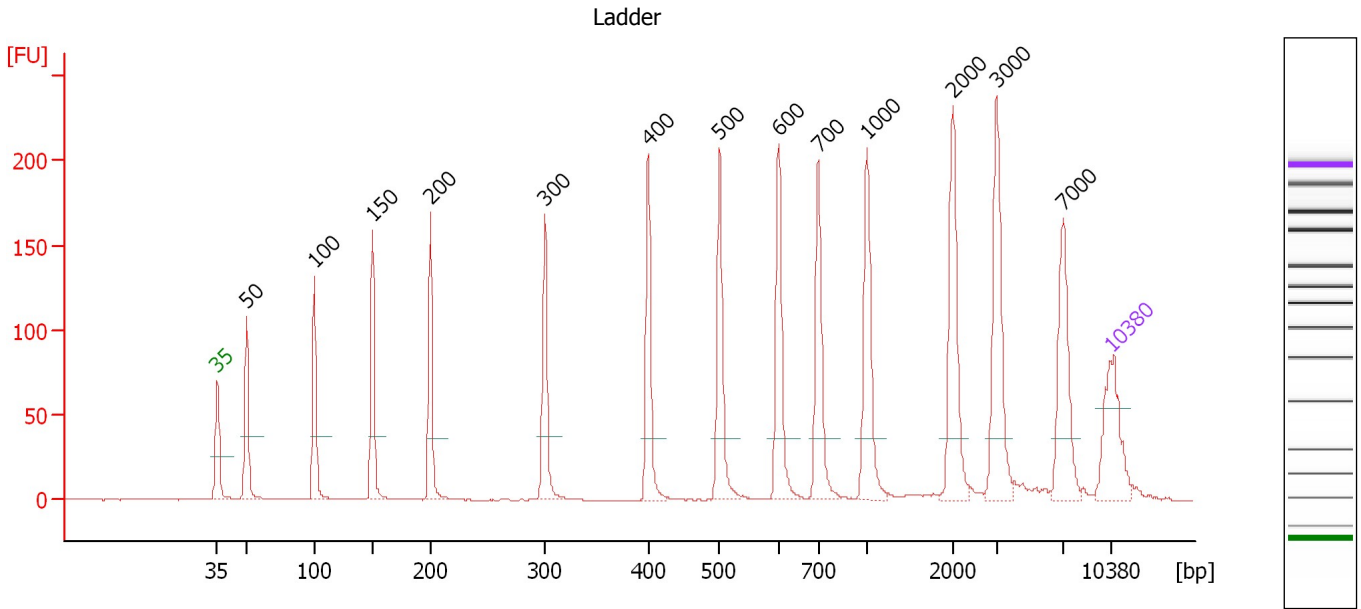
Ladder

Ladder Peak	Size	Area
1	35	160
2	50	210
3	100	208
4	150	221
5	200	242
6	300	270
7	400	305
8	500	306
9	600	336
10	700	321
11	1000	366
12	2000	413
13	3000	411
14	7000	400
15	10380	214

Assay Class: High Sensitivity DNA Assay
 Data Path: C:\...ents and Settings\Bioanalyzer\2012-05-01\2012-05-01_005.xad

Created: 5/1/2012 3:12:07 PM
 Modified: 5/1/2012 3:54:30 PM

Electropherogram Summary



Overall Results for Ladder

Noise: 0.2

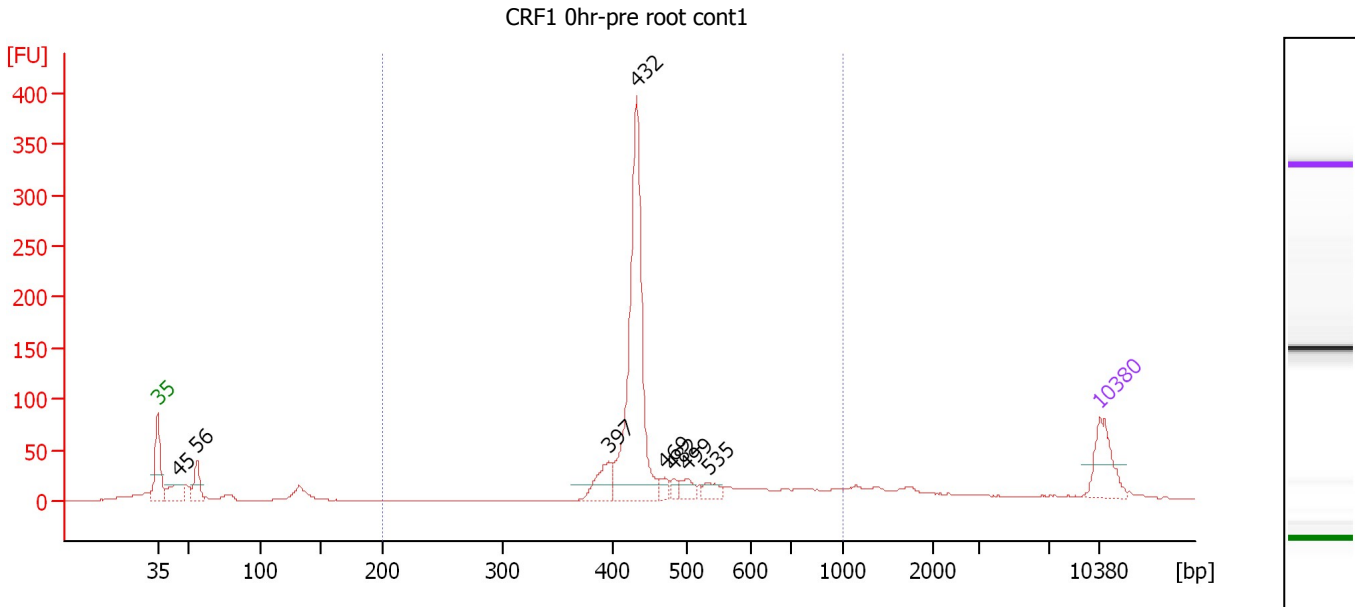
Peak table for Ladder

Peak	Size [bp]	Conc. [pg/μl]	Molarity [pmol/l]	Observations
1	35	125.00	5,411.3	Lower Marker
2	50	150.00	4,545.5	Ladder Peak
3	100	150.00	2,272.7	Ladder Peak
4	150	150.00	1,515.2	Ladder Peak
5	200	150.00	1,136.4	Ladder Peak
6	300	150.00	757.6	Ladder Peak
7	400	150.00	568.2	Ladder Peak
8	500	150.00	454.5	Ladder Peak
9	600	150.00	378.8	Ladder Peak
10	700	150.00	324.7	Ladder Peak
11	1,000	150.00	227.3	Ladder Peak
12	2,000	150.00	113.6	Ladder Peak
13	3,000	150.00	75.8	Ladder Peak
14	7,000	150.00	32.5	Ladder Peak
15	10,380	75.00	10.9	Upper Marker

Assay Class: High Sensitivity DNA Assay
 Data Path: C:\...ents and Settings\Bioanalyzer\2012-05-01\2012-05-01_005.xad

Created: 5/1/2012 3:12:07 PM
 Modified: 5/1/2012 3:54:30 PM

Electropherogram Summary Continued ...



Overall Results for sample 1 : CRF1 0hr-pre root cont1

Number of peaks found: 8 Corr. Area 1: 844.9
 Noise: 0.2

Peak table for sample 1 : CRF1 0hr-pre root cont1

Peak	Size [bp]	Conc. [pg/μl]	Molarity [pmol/l]	Observations
1	35	125.00	5,411.3	Lower Marker
2	45	72.51	2,419.2	
3	56	64.99	1,759.2	
4	397	68.86	262.9	
5	432	553.18	1,938.3	
6	469	20.18	65.2	
7	482	16.77	52.8	
8	499	27.50	83.6	
9	535	25.86	73.3	
10	10,380	75.00	10.9	Upper Marker

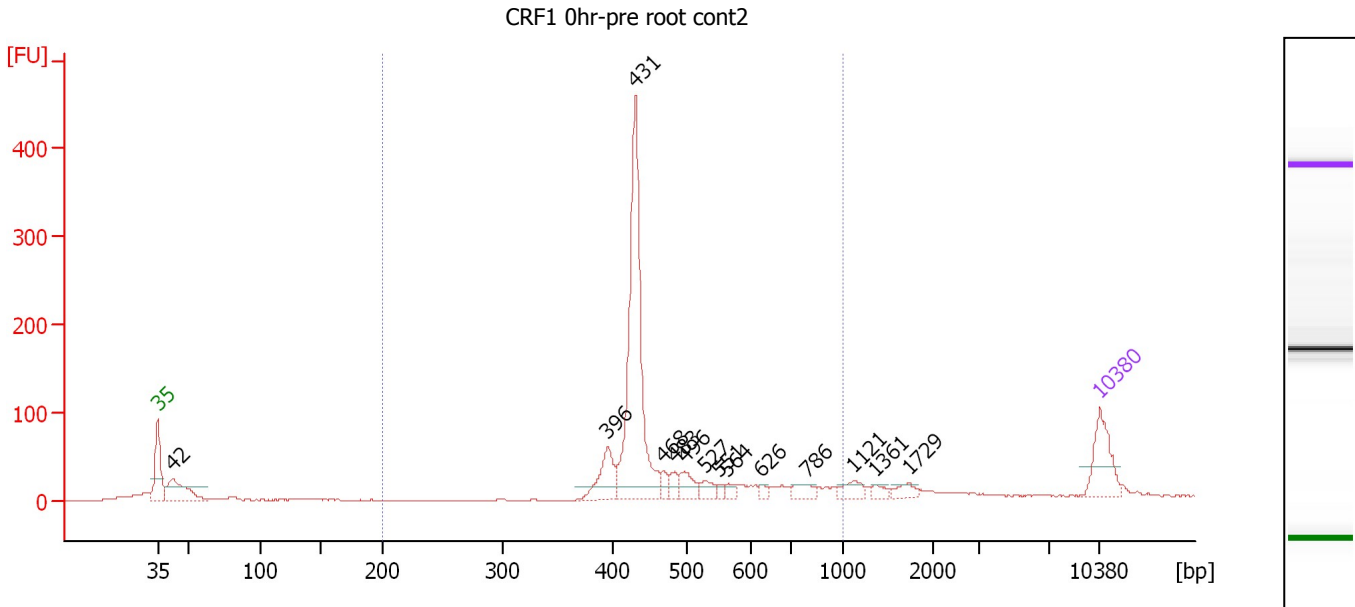
Region table for sample 1 : CRF1 0hr-pre root cont1

From [bp]	Molarity [pmol/l]	Average Size [bp]	Conc. [pg/μl]	To [bp]	Corr. Area	% of Total	Size distribution in CV [%]	Color
200	2,723.2	476	817.44	1,000	844.9	72	23.4	Blue

Assay Class: High Sensitivity DNA Assay
 Data Path: C:\...ents and Settings\Bioanalyzer\2012-05-01\2012-05-01_005.xad

Created: 5/1/2012 3:12:07 PM
 Modified: 5/1/2012 3:54:30 PM

Electropherogram Summary Continued ...



Overall Results for sample 2 : CRF1 0hr-pre root cont2

Number of peaks found: 14 Corr. Area 1: 974.4
 Noise: 0.4

Peak table for sample 2 : CRF1 0hr-pre root cont2

Peak	Size [bp]	Conc. [pg/μl]	Molarity [pmol/l]	Observations
1	35	125.00	5,411.3	Lower Marker
2	42	126.38	4,517.8	
3	396	85.45	327.0	
4	431	522.87	1,840.0	
5	468	19.08	61.8	
6	483	22.49	70.6	
7	496	41.26	126.1	
8	527	24.46	70.3	
9	551	10.10	27.8	
10	564	13.11	35.2	
11	626	11.15	27.0	
12	786	25.74	49.6	
13	1,121	26.06	35.2	
14	1,361	13.29	14.8	
15	1,729	18.17	15.9	
16	10,380	75.00	10.9	Upper Marker

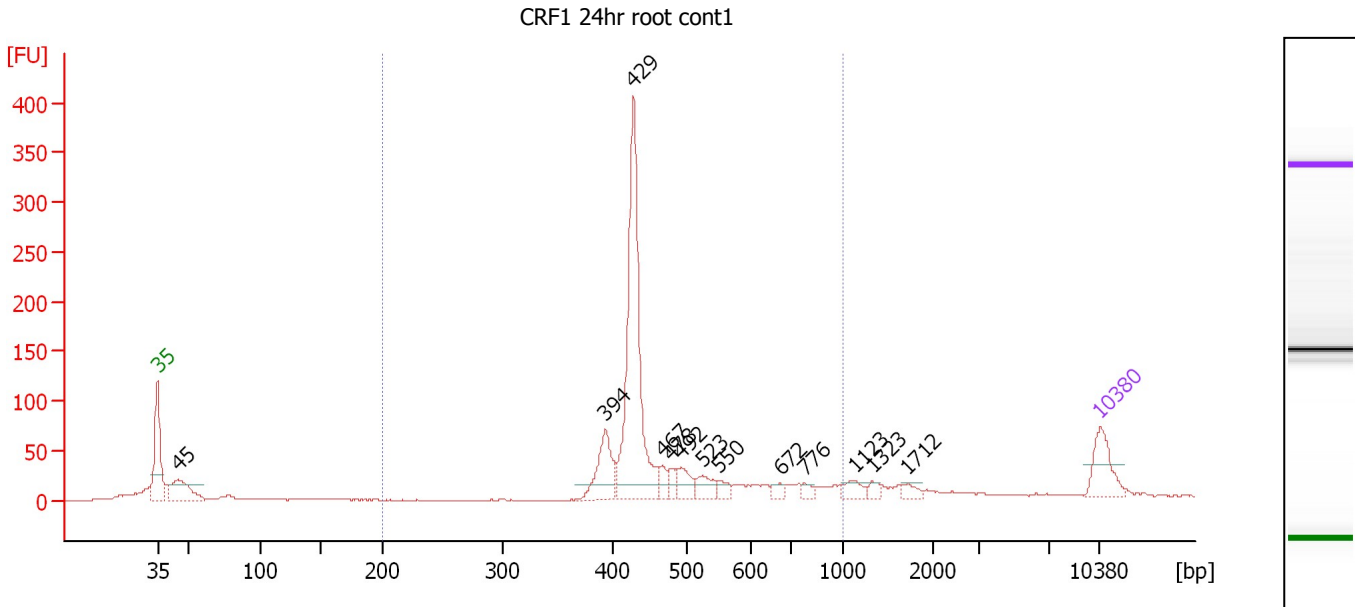
Region table for sample 2 : CRF1 0hr-pre root cont2

From [bp]	Molarity [pmol/l]	Average Size [bp]	Conc. [pg/μl]	To [bp]	Corr. Area	% of Total	Size distribution in CV [%]	Color
200	2,699.2	481	816.27	1,000	974.4	78	23.9	Blue

Assay Class: High Sensitivity DNA Assay
 Data Path: C:\...ents and Settings\Bioanalyzer\2012-05-01\2012-05-01_005.xad

Created: 5/1/2012 3:12:07 PM
 Modified: 5/1/2012 3:54:30 PM

Electropherogram Summary Continued ...



Overall Results for sample 3 : CRF1 24hr root cont1

Number of peaks found: 13 Corr. Area 1: 920.5
 Noise: 0.4

Peak table for sample 3 : CRF1 24hr root cont1

Peak	Size [bp]	Conc. [pg/μl]	Molarity [pmol/l]	Observations
1	35	125.00	5,411.3	Lower Marker
2	45	141.65	4,773.4	
3	394	134.99	519.2	
4	429	607.69	2,148.1	
5	467	30.38	98.6	
6	478	26.47	83.8	
7	492	53.80	165.8	
8	523	44.81	129.8	
9	550	23.57	64.9	
10	672	18.87	42.5	
11	776	15.59	30.4	
12	1,123	28.93	39.0	
13	1,323	14.46	16.6	
14	1,712	17.17	15.2	
15	10,380	75.00	10.9	Upper Marker

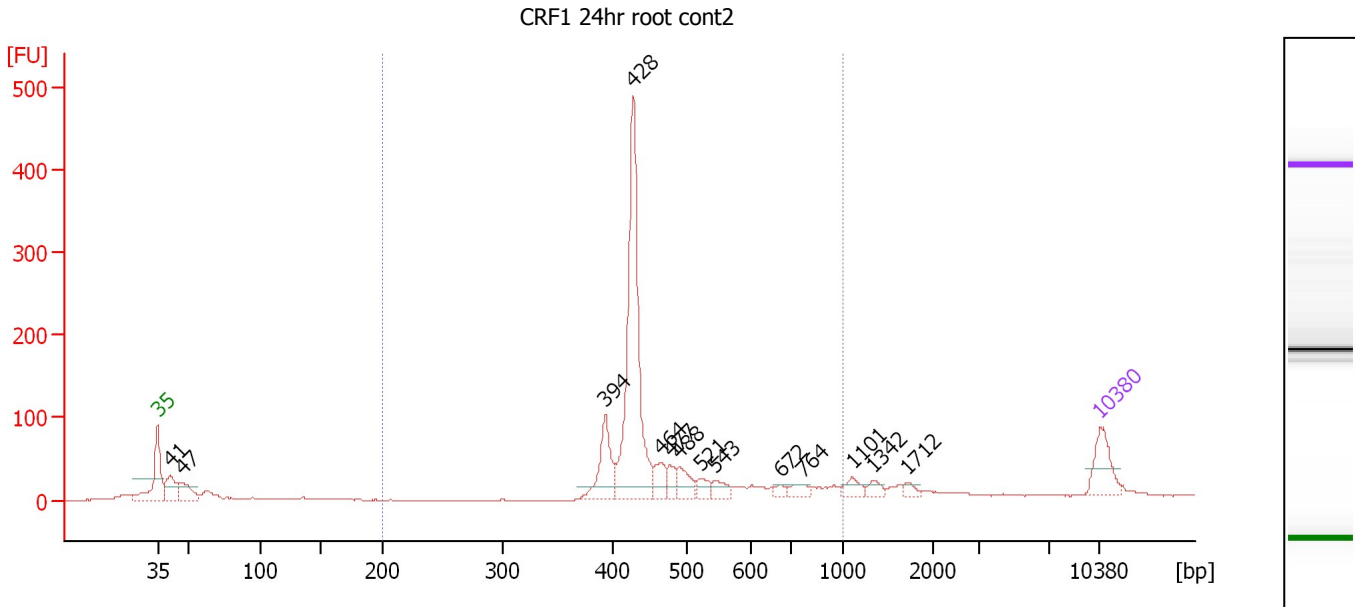
Region table for sample 3 : CRF1 24hr root cont1

From [bp]	Molarity [pmol/l]	Average Size [bp]	Conc. [pg/μl]	To [bp]	Corr. Area	% of Total	Size distribution in CV [%]	Color
200	3,364.0	479	1,012.59	1,000	920.5	78	24.0	Blue

Assay Class: High Sensitivity DNA Assay
 Data Path: C:\...ents and Settings\Bioanalyzer\2012-05-01\2012-05-01_005.xad

Created: 5/1/2012 3:12:07 PM
 Modified: 5/1/2012 3:54:30 PM

Electropherogram Summary Continued ...



Overall Results for sample 4 : CRF1 24hr root cont2

Number of peaks found: 14 Corr. Area 1: 1,039.0
 Noise: 0.6

Peak table for sample 4 : CRF1 24hr root cont2

Peak	Size [bp]	Conc. [pg/μl]	Molarity [pmol/l]	Observations
1	35	125.00	5,411.3	Lower Marker
2	41	98.89	3,655.0	
3	47	80.87	2,607.6	
4	394	144.03	554.4	
5	428	634.59	2,245.1	
6	464	55.41	180.8	
7	477	35.69	113.4	
8	488	54.46	168.9	
9	521	30.93	90.0	
10	543	33.82	94.4	
11	672	15.91	35.9	
12	764	27.19	53.9	
13	1,101	29.41	40.5	
14	1,342	20.34	23.0	
15	1,712	13.92	12.3	
16	10,380	75.00	10.9	Upper Marker

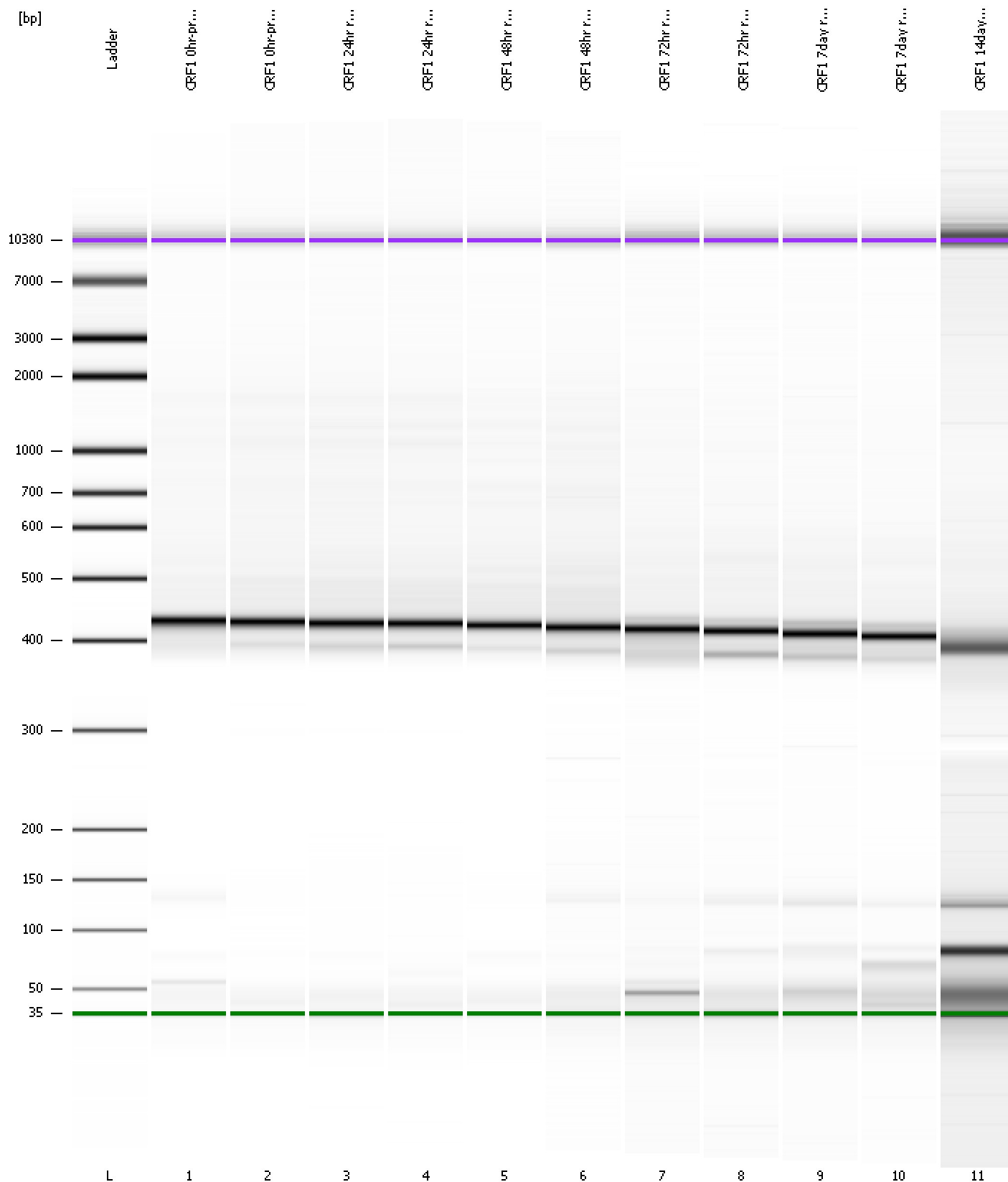
Region table for sample 4 : CRF1 24hr root cont2

From [bp]	Molarity [pmol/l]	Average Size [bp]	Conc. [pg/μl]	To [bp]	Corr. Area	% of Total	Size distribution in CV [%]	Color
200	3,545.0	474	1,060.02	1,000	1,039.0	80	23.2	Blue

Assay Class: High Sensitivity DNA Assay
Data Path: C:\...ents and Settings\Bioanalyzer\2012-05-01\2012-05-01_005.xad

Created: 5/1/2012 3:12:07 PM
Modified: 5/1/2012 3:54:30 PM

Gel Image



Assay Class: High Sensitivity DNA Assay
 Data Path: C:\...ents and Settings\Bioanalyzer\2012-05-01\2012-05-01_005.xad

Created: 5/1/2012 3:12:07 PM
 Modified: 5/1/2012 3:54:30 PM

Run Logbook

Description	Number	Source	Category	Sub Category	Time	Time Zone	User	Host
Run ended on port 1 (Number of wells acquired: 12)		Instrument	Run		5/1/2012 3:53:23 PM	(GMT --07:00) Pacific Standard Time	UC Davis	D8XSMGH1
Run started on port 1 (File: C:\Documents and Settings\Bioanalyzer\2012-05-01\2012-05-01_005.xad)		Instrument	Run		5/1/2012 3:12:12 PM	(GMT --07:00) Pacific Standard Time	UC Davis	D8XSMGH1
Product Number : G2938B		Instrument	Run		5/1/2012 3:12:12 PM	(GMT --07:00) Pacific Standard Time	UC Davis	D8XSMGH1
Name :		Instrument	Run		5/1/2012 3:12:12 PM	(GMT --07:00) Pacific Standard Time	UC Davis	D8XSMGH1
Vendor : Agilent Technologies		Instrument	Run		5/1/2012 3:12:12 PM	(GMT --07:00) Pacific Standard Time	UC Davis	D8XSMGH1
Serial# : DE13701086		Instrument	Run		5/1/2012 3:12:12 PM	(GMT --07:00) Pacific Standard Time	UC Davis	D8XSMGH1
Firmware : C.01.069		Instrument	Run		5/1/2012 3:12:12 PM	(GMT --07:00) Pacific Standard Time	UC Davis	D8XSMGH1
Cartridge : Electrode		Instrument	Run		5/1/2012 3:12:12 PM	(GMT --07:00) Pacific Standard Time	UC Davis	D8XSMGH1