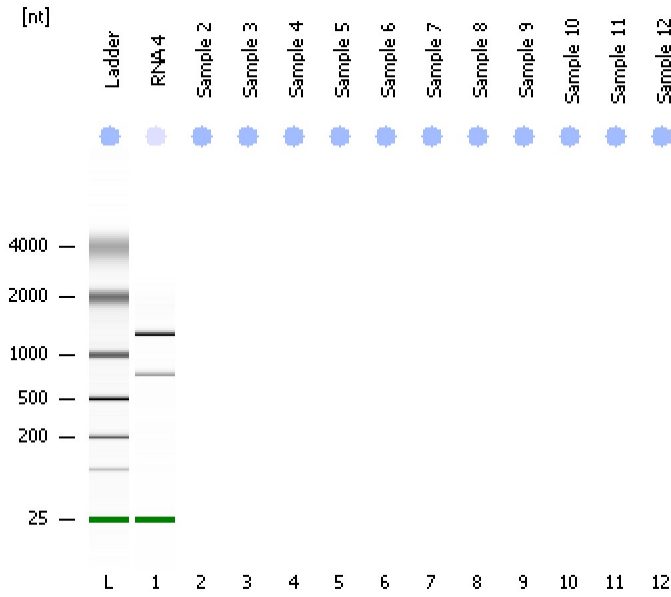


Assay Class: Eukaryote Total RNA Nano
Data Path: C:\...ents and Settings\Bioanalyzer\2012-05-02\2012-05-02_001.xad

Created: 5/2/2012 10:24:30 AM
Modified: 5/2/2012 10:36:11 AM

Electrophoresis File Run Summary



Instrument Information:

Instrument Name: DE13701086 Firmware: C.01.069
Serial#: DE13701086 Type: G2938B

Assay Information:

Assay Origin Path: C:\Program Files\Agilent\2100 bioanalyzer\2100 expert\assays\RNA\Eukaryote Total RNA Nano Series II.xsy

Assay Class: Eukaryote Total RNA Nano

Version: 2.6

Assay Comments: Total RNA Analysis ng sensitivity (Eukaryote)

© Copyright 2003 - 2009 Agilent Technologies, Inc.

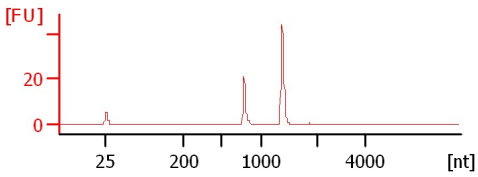
Chip Information:

Chip Lot #:

Reagent Kit Lot #:

Chip Comments:

RNA 4
RIN: 9.80



Assay Class: Eukaryote Total RNA Nano
 Data Path: C:\...ents and Settings\Bioanalyzer\2012-05-02\2012-05-02_001.xad

Created: 5/2/2012 10:24:30 AM
 Modified: 5/2/2012 10:36:11 AM

Electrophoresis File Run Summary (Chip Summary)

Sample Name	Sample Comment	Status	Result Label	Result Color
RNA 4		✓	RIN: 9.80	
Sample 2				
Sample 3				
Sample 4				
Sample 5				
Sample 6				
Sample 7				
Sample 8				
Sample 9				
Sample 10				
Sample 11				
Sample 12				
Ladder		✓	All Other Samples	

Chip Lot #

Reagent Kit Lot #

Chip Comments :

Assay Class: Eukaryote Total RNA Nano
Data Path: C:\...ents and Settings\Bioanalyzer\2012-05-02\2012-05-02_001.xad

Created: 5/2/2012 10:24:30 AM
Modified: 5/2/2012 10:36:11 AM

Electrophoresis Assay Details

General Analysis Settings

Number of Available Sample and Ladder Wells (Max.) : 13
Minimum Visible Range [s] : 17
Maximum Visible Range [s] : 70
Start Analysis Time Range [s] : 19
End Analysis Time Range [s] : 69
Ladder Concentration [ng/μl] : 150
Lower Marker Concentration [ng/μl] : 0
Upper Marker Concentration [ng/μl] : 0
Used Lower Marker for Quantitation
Standard Curve Fit is Logarithmic
Show Data Aligned to Lower Marker

Integrator Settings

Integration Start Time [s] : 19
Integration End Time [s] : 69
Slope Threshold : 0.6
Height Threshold [FU] : 0.5
Area Threshold : 0.2
Width Threshold [s] : 0.5
Baseline Plateau [s] : 6

Filter Settings

Filter Width [s] : 0.5
Polynomial Order : 4

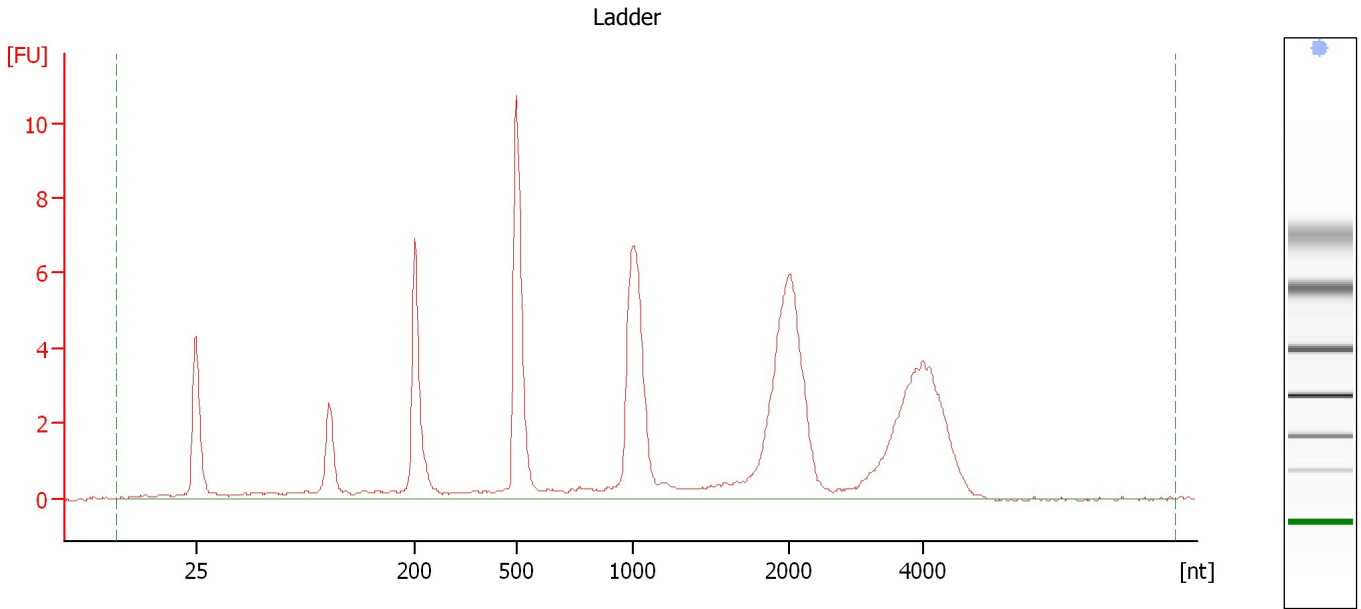
Ladder

Ladder Peak	Size
1	25
2	200
3	500
4	1000
5	2000
6	4000

Assay Class: Eukaryote Total RNA Nano
Data Path: C:\...ents and Settings\Bioanalyzer\2012-05-02\2012-05-02_001.xad

Created: 5/2/2012 10:24:30 AM
Modified: 5/2/2012 10:36:11 AM

Electropherogram Summary



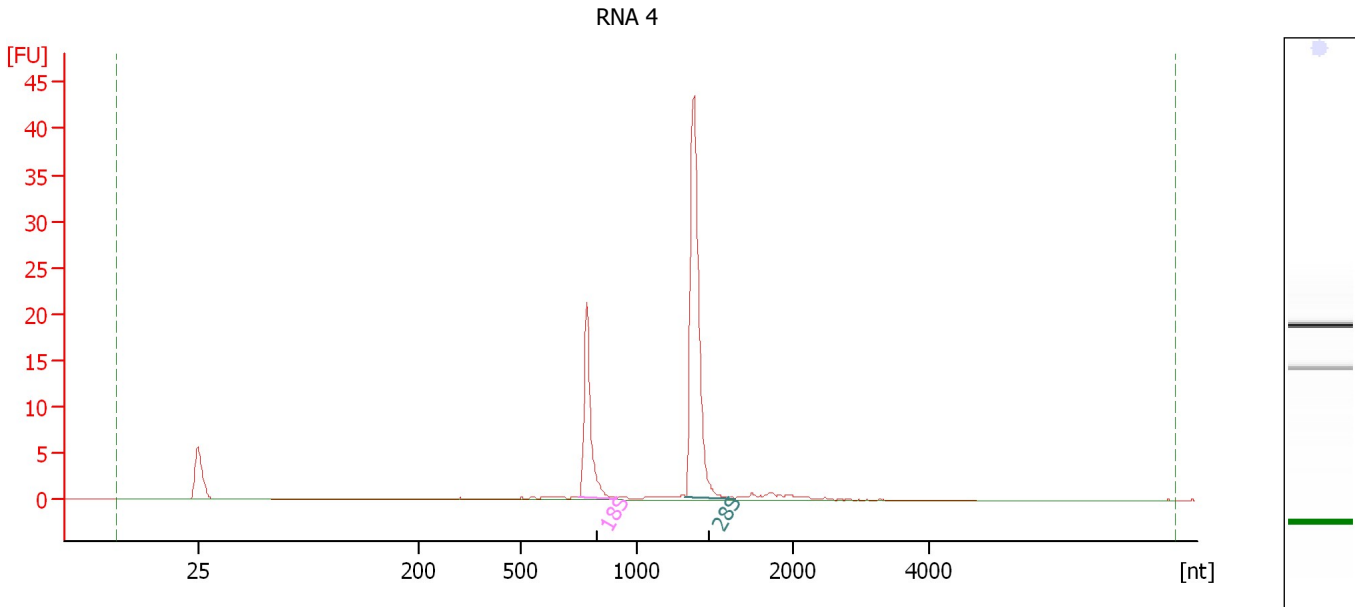
Overall Results for Ladder

RNA Area:	87.9	Result Flagging Color:	
RNA Concentration:	150 ng/μl	Result Flagging Label:	All Other Samples

Assay Class: Eukaryote Total RNA Nano
 Data Path: C:\...ents and Settings\Bioanalyzer\2012-05-02\2012-05-02_001.xad

Created: 5/2/2012 10:24:30 AM
 Modified: 5/2/2012 10:36:11 AM

Electropherogram Summary Continued ...



Overall Results for sample 1 : RNA 4

RNA Area:	69.8	RNA Integrity Number (RIN):	9.8 (B.02.08, Anomaly Threshold(s) manually adapted)
RNA Concentration:	119 ng/μl	Result Flagging Color:	
rRNA Ratio [28s / 18s]:	2.3	Result Flagging Label:	RIN: 9.80

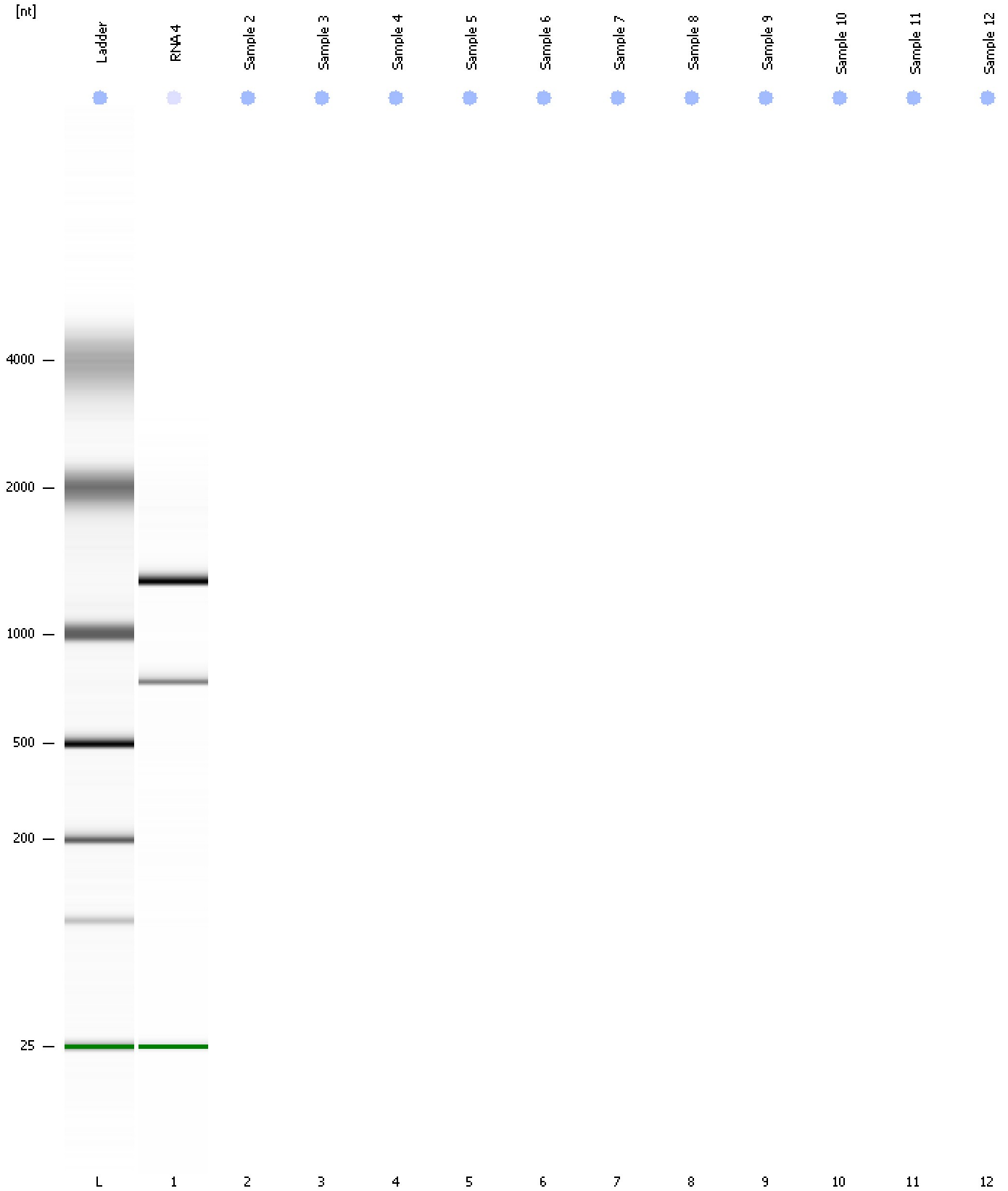
Fragment table for sample 1 : RNA 4

Name	Start Size [nt]	End Size [nt]	Area	% of total Area
18S	754	909	18.1	25.9
28S	1,308	1,629	41.5	59.5

Assay Class: Eukaryote Total RNA Nano
Data Path: C:\...ents and Settings\Bioanalyzer\2012-05-02\2012-05-02_001.xad

Created: 5/2/2012 10:24:30 AM
Modified: 5/2/2012 10:36:11 AM

Gel Image



Assay Class: Eukaryote Total RNA Nano
Data Path: C:\...ents and Settings\Bioanalyzer\2012-05-02\2012-05-02_001.xad

Created: 5/2/2012 10:24:30 AM
Modified: 5/2/2012 10:36:11 AM

Invalid Samples

Sample 2 has not been run, no results available.

Sample 3 has not been run, no results available.

Sample 4 has not been run, no results available.

Assay Class: Eukaryote Total RNA Nano
 Data Path: C:\...ents and Settings\Bioanalyzer\2012-05-02\2012-05-02_001.xad

Created: 5/2/2012 10:24:30 AM
 Modified: 5/2/2012 10:36:11 AM

Run Logbook

Description	Number	Source	Category	Sub Category	Time	Time Zone	User	Host
Run ended on port 1 (Number of wells acquired: 2)		Instrument	Run		5/2/2012 10:33:15 AM	(GMT --07:00) Pacific Standard Time	UC Davis	D8XSMGH1
Run started on port 1 (File: C:\Documents and Settings\Bioanalyzer\2012-05-02\2012-05-02_001.xad)		Instrument	Run		5/2/2012 10:24:36 AM	(GMT --07:00) Pacific Standard Time	UC Davis	D8XSMGH1
Product Number : G2938B		Instrument	Run		5/2/2012 10:24:36 AM	(GMT --07:00) Pacific Standard Time	UC Davis	D8XSMGH1
Name :		Instrument	Run		5/2/2012 10:24:36 AM	(GMT --07:00) Pacific Standard Time	UC Davis	D8XSMGH1
Vendor : Agilent Technologies		Instrument	Run		5/2/2012 10:24:36 AM	(GMT --07:00) Pacific Standard Time	UC Davis	D8XSMGH1
Serial# : DE13701086		Instrument	Run		5/2/2012 10:24:36 AM	(GMT --07:00) Pacific Standard Time	UC Davis	D8XSMGH1
Firmware : C.01.069		Instrument	Run		5/2/2012 10:24:36 AM	(GMT --07:00) Pacific Standard Time	UC Davis	D8XSMGH1
Cartridge : Electrode		Instrument	Run		5/2/2012 10:24:36 AM	(GMT --07:00) Pacific Standard Time	UC Davis	D8XSMGH1