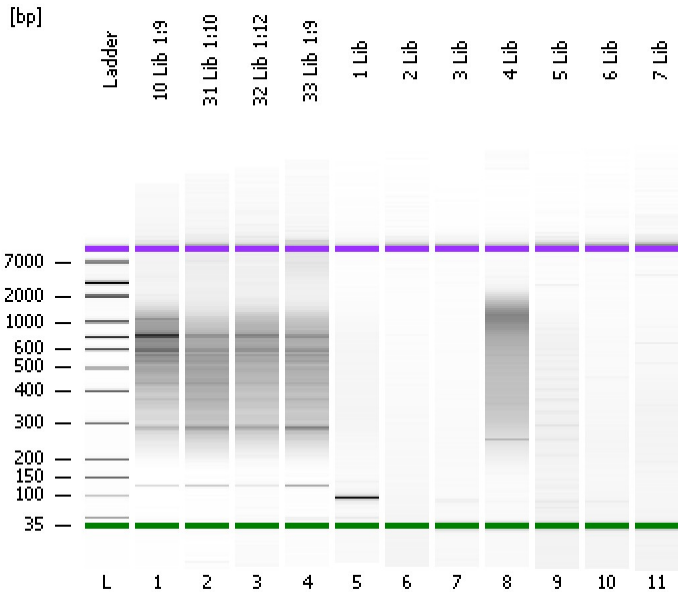


Assay Class: High Sensitivity DNA Assay
Data Path: C:\...ents and Settings\Bioanalyzer\2012-05-02\2012-05-02_003.xad

Created: 5/2/2012 2:54:11 PM
Modified: 5/2/2012 3:43:40 PM

Electrophoresis File Run Summary



Instrument Information:

Instrument Name: DE13701086 Firmware: C.01.069
Serial#: DE13701086 Type: G2938B

Assay Information:

Assay Origin Path: C:\Program Files\Agilent\2100 bioanalyzer\2100 expert\assays\dsDNA\High Sensitivity DNA.xsy
Assay Class: High Sensitivity DNA Assay
Version: 1.03
Assay Comments: Copyright © 2003-2010 Agilent Technologies

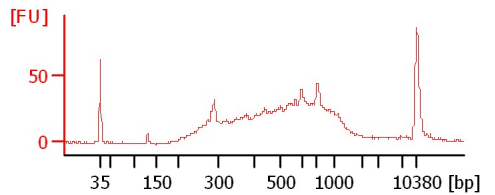
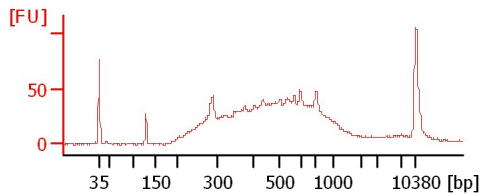
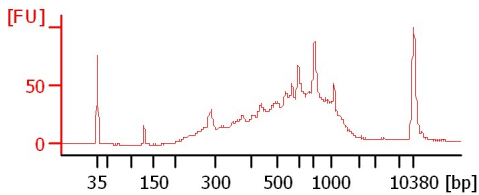
Chip Information:

Chip Lot #: Reagent Kit Lot #: Chip Comments:

10 Lib 1:9

31 Lib 1:10

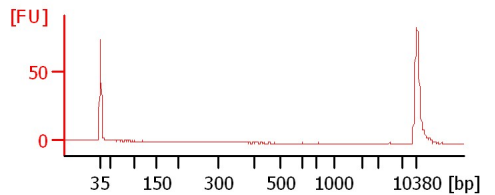
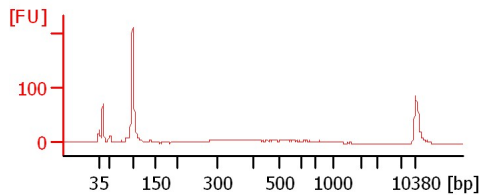
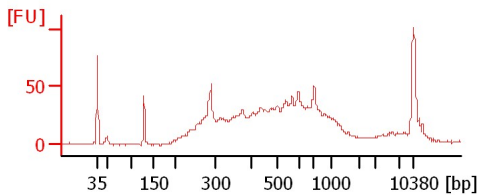
32 Lib 1:12



33 Lib 1:9

1 Lib

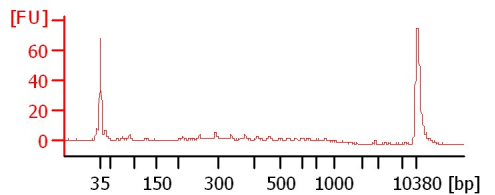
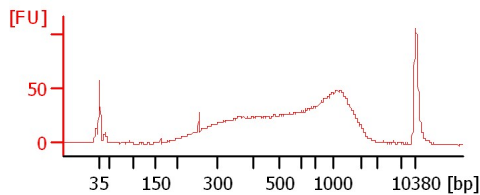
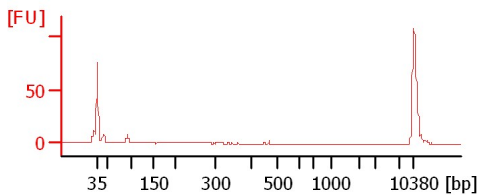
2 Lib



3 Lib

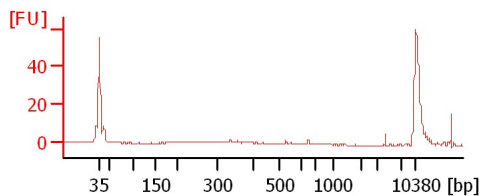
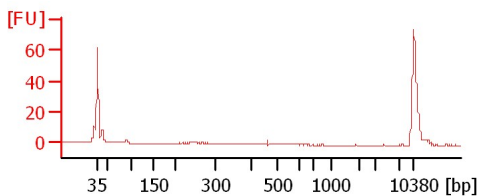
4 Lib

5 Lib



6 Lib

7 Lib



Assay Class: High Sensitivity DNA Assay
Data Path: C:\...ents and Settings\Bioanalyzer\2012-05-02\2012-05-02_003.xad

Created: 5/2/2012 2:54:11 PM
Modified: 5/2/2012 3:43:40 PM

Electrophoresis File Run Summary (Chip Summary)

Sample Name	Sample Comment	Rest. Digest	Status	Observation	Result Label	Result Color
10 Lib 1:9		<input type="checkbox"/>	✓			
31 Lib 1:10		<input type="checkbox"/>	✓			
32 Lib 1:12		<input type="checkbox"/>	✓			
33 Lib 1:9		<input type="checkbox"/>	✓			
1 Lib		<input type="checkbox"/>	✓			
2 Lib		<input type="checkbox"/>	✓			
3 Lib		<input type="checkbox"/>	✓			
4 Lib		<input type="checkbox"/>	✓			
5 Lib		<input type="checkbox"/>	✓			
6 Lib		<input type="checkbox"/>	✓			
7 Lib		<input type="checkbox"/>	✓			
Ladder		<input type="checkbox"/>	✓			

Chip Lot #

Reagent Kit Lot #

Chip Comments :

Assay Class: High Sensitivity DNA Assay
Data Path: C:\...ents and Settings\Bioanalyzer\2012-05-02\2012-05-02_003.xad

Created: 5/2/2012 2:54:11 PM
Modified: 5/2/2012 3:43:40 PM

Electrophoresis Assay Details

General Analysis Settings

Number of Available Sample and Ladder Wells (Max.) : 12
Minimum Visible Range [s] : 32
Maximum Visible Range [s] : 138
Start Analysis Time Range [s] : 33
End Analysis Time Range [s] : 137.5
Ladder Concentration [pg/μl] : 1950
Uses Standard Area for Ladder Fragments
Lower Marker Concentration [pg/μl] : 125
Upper Marker Concentration [pg/μl] : 75
Used Upper Marker for Quantitation
Standard Curve Fit is Point to Point
Show Data Aligned to Lower and Upper Marker

Integrator Settings

Integration Start Time [s] : 33.05
Integration End Time [s] : 137
Slope Threshold : 0.8
Height Threshold [FU] : 5
Area Threshold : 0.1
Width Threshold [s] : 0.6
Baseline Plateau [s] : 0.5

Filter Settings

Filter Width [s] : 0.5
Polynomial Order : 4

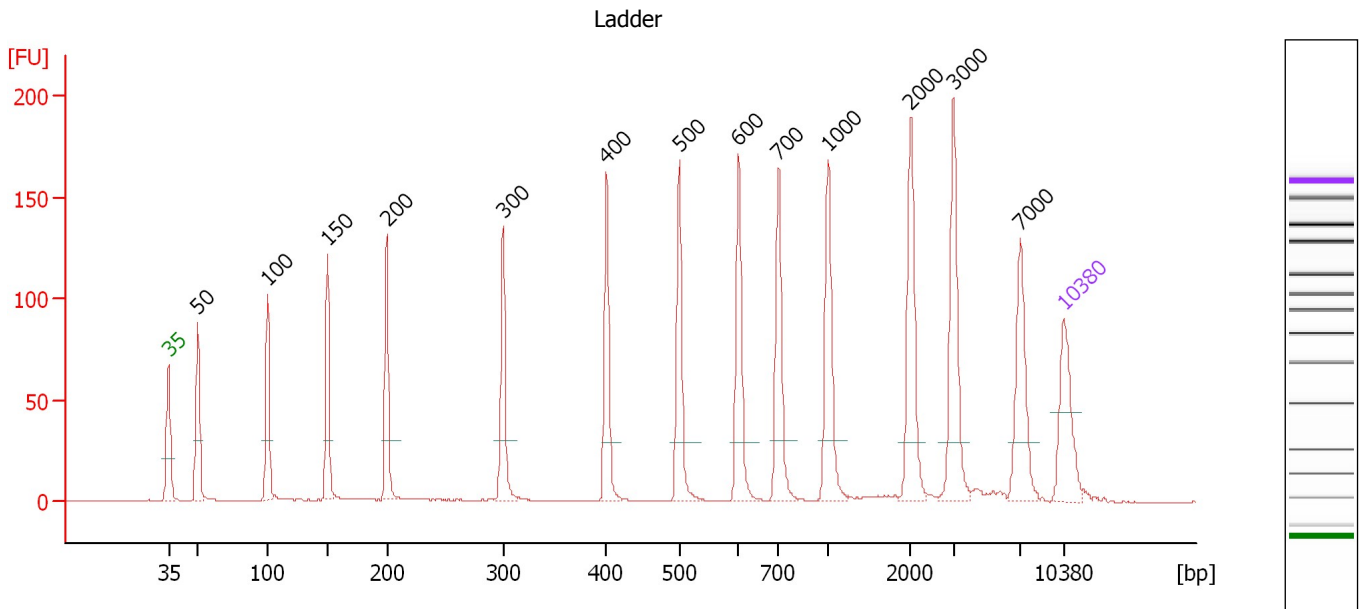
Ladder

Ladder Peak	Size	Area
1	35	160
2	50	210
3	100	208
4	150	221
5	200	242
6	300	270
7	400	305
8	500	306
9	600	336
10	700	321
11	1000	366
12	2000	413
13	3000	411
14	7000	400
15	10380	214

Assay Class: High Sensitivity DNA Assay
 Data Path: C:\...ents and Settings\Bioanalyzer\2012-05-02\2012-05-02_003.xad

Created: 5/2/2012 2:54:11 PM
 Modified: 5/2/2012 3:43:40 PM

Electropherogram Summary



Overall Results for Ladder

Noise: 0.1

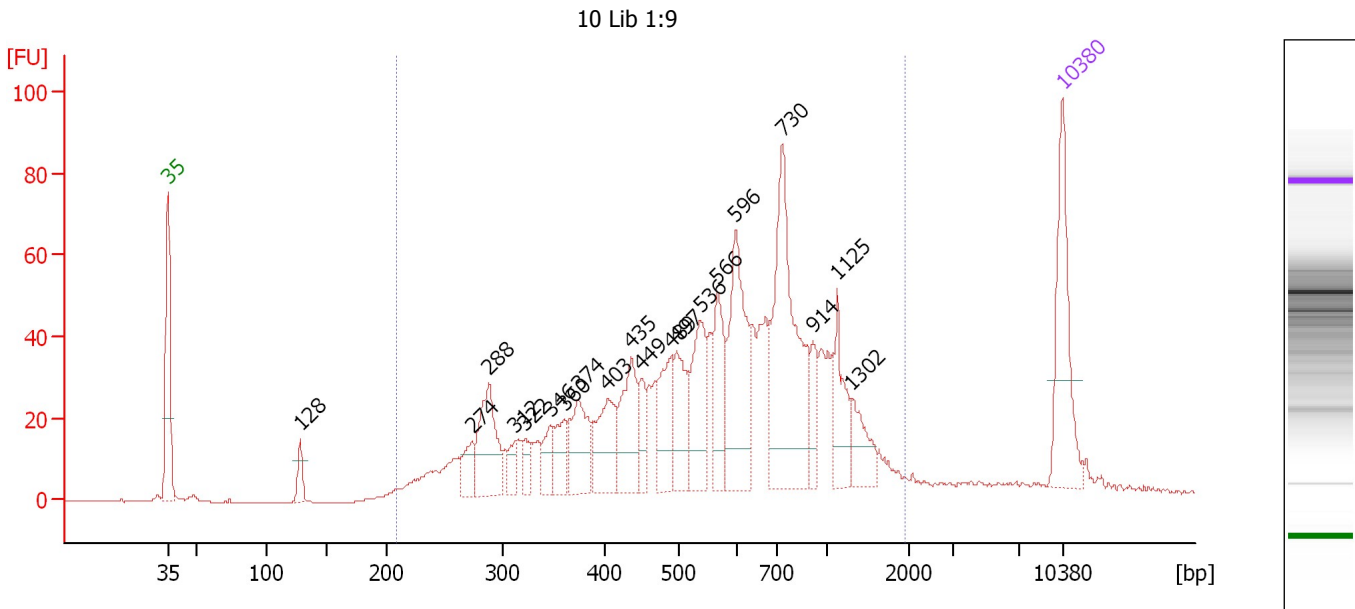
Peak table for Ladder

Peak	Size [bp]	Conc. [pg/μl]	Molarity [pmol/l]	Observations
1	35	125.00	5,411.3	Lower Marker
2	50	150.00	4,545.5	Ladder Peak
3	100	150.00	2,272.7	Ladder Peak
4	150	150.00	1,515.2	Ladder Peak
5	200	150.00	1,136.4	Ladder Peak
6	300	150.00	757.6	Ladder Peak
7	400	150.00	568.2	Ladder Peak
8	500	150.00	454.5	Ladder Peak
9	600	150.00	378.8	Ladder Peak
10	700	150.00	324.7	Ladder Peak
11	1,000	150.00	227.3	Ladder Peak
12	2,000	150.00	113.6	Ladder Peak
13	3,000	150.00	75.8	Ladder Peak
14	7,000	150.00	32.5	Ladder Peak
15	10,380	75.00	10.9	Upper Marker

Assay Class: High Sensitivity DNA Assay
 Data Path: C:\...ents and Settings\Bioanalyzer\2012-05-02\2012-05-02_003.xad

Created: 5/2/2012 2:54:11 PM
 Modified: 5/2/2012 3:43:40 PM

Electropherogram Summary Continued ...



Setpoint Deviations for sample 1 : 10 Lib 1:9

Height Threshold [FU] : 10

Overall Results for sample 1 : 10 Lib 1:9

Number of peaks found: 20 Corr. Area 1: 1,255.6
 Noise: 0.1


Peak table for sample 1 : 10 Lib 1:9

Peak	Size [bp]	Conc. [pg/μl]	Molarity [pmol/l]	Observations
1	35	125.00	5,411.3	Lower Marker
2	128	20.81	246.3	
3	274	28.34	156.5	
4	288	85.18	447.5	
5	312	18.69	90.8	
6	322	17.22	81.1	
7	346	25.67	112.4	
8	360	31.20	131.2	
9	374	58.85	238.6	
10	403	61.05	229.7	
11	435	67.82	236.3	
12	449	24.26	81.8	
13	489	57.23	177.2	
14	497	54.51	166.0	
15	536	71.79	202.8	
16	566	58.49	156.6	
17	596	115.27	292.9	
18	730	192.38	399.4	
19	914	24.61	40.8	
20	1,125	40.69	54.8	
21	1,302	30.46	35.5	
22	10,380	75.00	10.9	Upper Marker

Assay Class: High Sensitivity DNA Assay
Data Path: C:\...ents and Settings\Bioanalyzer\2012-05-02\2012-05-02_003.xad

Created: 5/2/2012 2:54:11 PM
Modified: 5/2/2012 3:43:40 PM

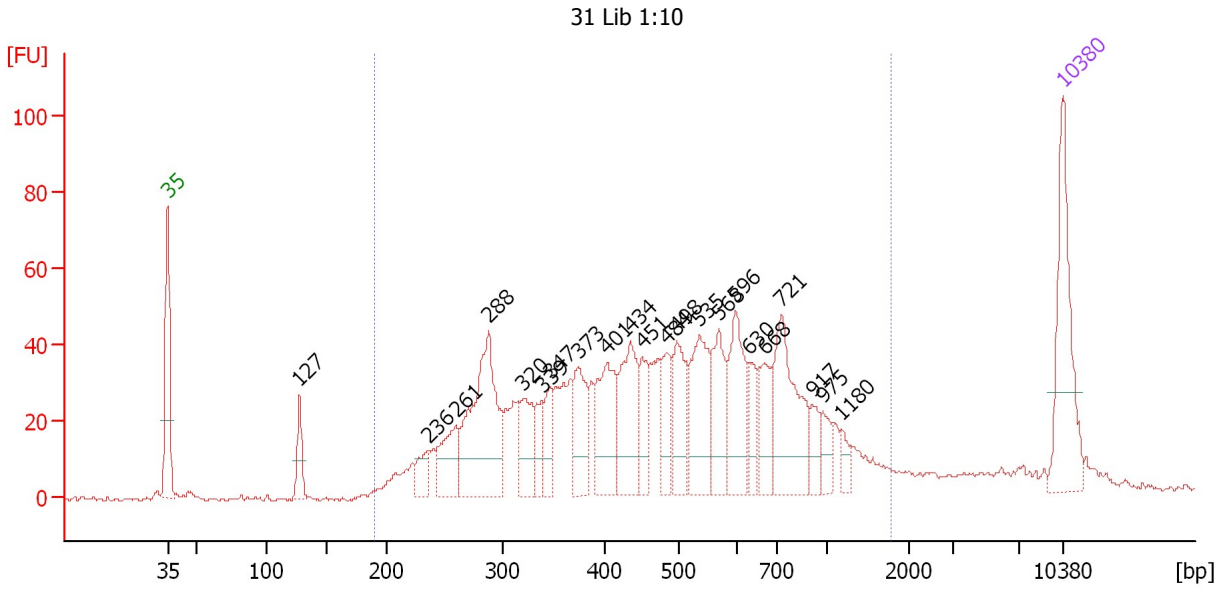
Electropherogram Summary Continued ...**... Region table for sample 1 : 10 Lib 1:9**

From [bp]	Molarity [pmol/l]	Average Size [bp]	Conc. [pg/μl]	To [bp]	Corr. Area	% of Total	Size distribution in CV [%]	Co lor
210	4,470.3	632	1,413.12	1,955	1,255.6	96	48.5	

Assay Class: High Sensitivity DNA Assay
 Data Path: C:\...ents and Settings\Bioanalyzer\2012-05-02\2012-05-02_003.xad

Created: 5/2/2012 2:54:11 PM
 Modified: 5/2/2012 3:43:40 PM

Electropherogram Summary Continued ...



Setpoint Deviations for sample 2 : 31 Lib 1:10

Height Threshold [FU] : 10

Overall Results for sample 2 : 31 Lib 1:10

Number of peaks found: 22 Corr. Area 1: 1,367.3
 Noise: 0.6

Peak table for sample 2 : 31 Lib 1:10

Peak	Size [bp]	Conc. [pg/μl]	Molarity [pmol/l]	Observations
1	35	125.00	5,411.3	Lower Marker
2	127	30.13	358.1	
3	236	22.49	144.4	
4	261	52.89	307.5	
5	288	160.48	843.4	
6	320	49.05	232.1	
7	339	24.01	107.4	
8	347	29.98	131.0	
9	373	55.14	223.8	
10	401	72.54	273.9	
11	434	77.03	268.8	
12	451	36.91	124.1	
13	484	37.73	118.1	
14	498	55.19	167.9	
15	535	70.56	199.9	
16	568	53.54	142.8	
17	596	65.35	166.1	
18	630	23.21	55.8	
19	668	34.67	78.6	
20	721	98.13	206.1	
21	917	17.64	29.2	
22	975	15.99	24.9	

Assay Class: High Sensitivity DNA Assay
 Data Path: C:\...ents and Settings\Bioanalyzer\2012-05-02\2012-05-02_003.xad

Created: 5/2/2012 2:54:11 PM
 Modified: 5/2/2012 3:43:40 PM

Electropherogram Summary Continued ...

... Peak table for sample 2 : 31 Lib 1:10

Peak	Size [bp]	Conc. [pg/μl]	Molarity [pmol/l]	Observations
23	1,180	9.91	12.7	
24	▶ 10,380	75.00	10.9	Upper Marker

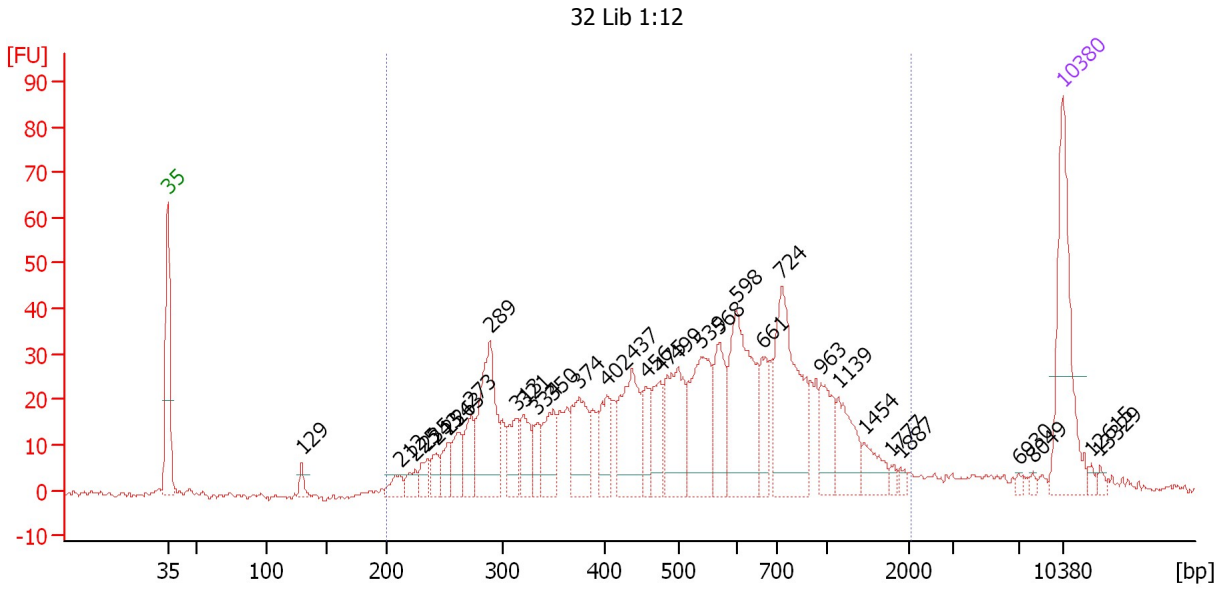
Region table for sample 2 : 31 Lib 1:10

From [bp]	Molarity [pmol/l]	Average Size [bp]	Conc. [pg/μl]	To [bp]	Corr. Area	% of Total	Size distribution in CV [%]	Color
191	5,006.9	530	1,351.16	1,774	1,367.3	91	49.6	■

Assay Class: High Sensitivity DNA Assay
 Data Path: C:\...ents and Settings\Bioanalyzer\2012-05-02\2012-05-02_003.xad

Created: 5/2/2012 2:54:11 PM
 Modified: 5/2/2012 3:43:40 PM

Electropherogram Summary Continued ...



Overall Results for sample 3 : 32 Lib 1:12

Number of peaks found: 33 Corr. Area 1: 1,030.0
 Noise: 0.6

Peak table for sample 3 : 32 Lib 1:12

Peak	Size [bp]	Conc. [pg/μl]	Molarity [pmol/l]	Observations
1	35	125.00	5,411.3	Lower Marker
2	129	9.86	115.6	
3	212	14.16	101.2	
4	225	12.88	86.6	
5	235	14.70	94.7	
6	243	14.48	90.2	
7	254	19.11	114.2	
8	263	25.61	147.6	
9	273	32.09	177.9	
10	289	94.66	495.5	
11	313	30.63	148.1	
12	321	27.91	131.8	
13	334	17.39	78.9	
14	350	35.75	154.9	
15	374	51.45	208.3	
16	402	31.49	118.8	
17	437	70.99	246.4	
18	456	22.92	76.2	
19	475	34.98	111.6	
20	499	67.21	204.1	
21	539	75.35	212.0	
22	568	44.91	119.7	
23	598	98.56	249.8	
24	661	31.02	71.1	
25	724	111.78	233.9	
26	963	30.95	48.7	

Assay Class: High Sensitivity DNA Assay
 Data Path: C:\...ents and Settings\Bioanalyzer\2012-05-02\2012-05-02_003.xad


Created: 5/2/2012 2:54:11 PM
 Modified: 5/2/2012 3:43:40 PM

Electropherogram Summary Continued ...

... Peak table for sample 3 : 32 Lib 1:12

Peak	Size [bp]	Conc. [pg/µl]	Molarity [pmol/l]	Observations
27	1,139	34.22	45.5	
28	1,454	18.18	18.9	
29	1,777	3.42	2.9	
30	1,887	3.66	2.9	
31	6,930	2.14	0.5	
32	8,049	2.03	0.4	
33	10,380	75.00	10.9	Upper Marker
34	12,615	0.00	0.0	
35	13,329	0.00	0.0	

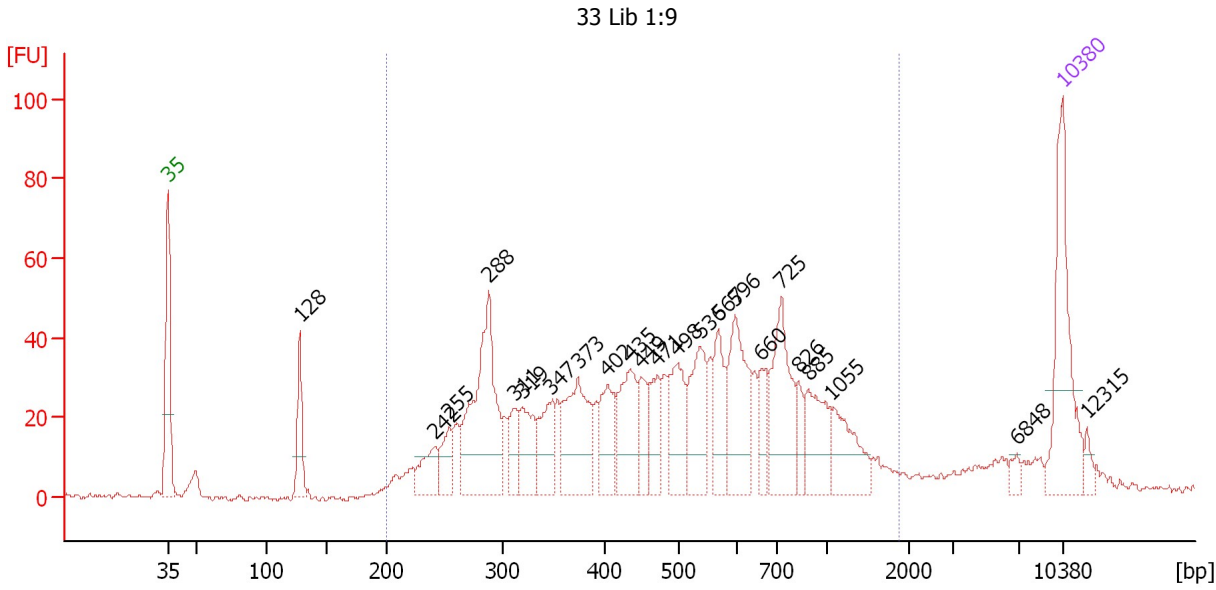
Region table for sample 3 : 32 Lib 1:12

From [bp]	Molarity [pmol/l]	Average Size [bp]	Conc. [pg/µl]	To [bp]	Corr. Area	% of Total	Size distribution in CV [%]	Color
200	4,047.2	593	1,163.84	2,045	1,030.0	93	54.2	

Assay Class: High Sensitivity DNA Assay
 Data Path: C:\...ents and Settings\Bioanalyzer\2012-05-02\2012-05-02_003.xad

Created: 5/2/2012 2:54:11 PM
 Modified: 5/2/2012 3:43:40 PM

Electropherogram Summary Continued ...



Setpoint Deviations for sample 4 : 33 Lib 1:9

Height Threshold [FU] : 10

Overall Results for sample 4 : 33 Lib 1:9

Number of peaks found: 23 Corr. Area 1: 1,231.6
 Noise: 0.7

Peak table for sample 4 : 33 Lib 1:9

Peak	Size [bp]	Conc. [pg/μl]	Molarity [pmol/l]	Observations
1	35	125.00	5,411.3	Lower Marker
2	128	44.85	532.9	
3	242	33.07	206.8	
4	255	26.39	157.1	
5	288	155.72	818.0	
6	311	26.83	130.5	
7	319	42.93	203.8	
8	347	41.59	181.6	
9	373	84.23	341.9	
10	402	41.18	155.3	
11	435	58.65	204.4	
12	449	30.49	102.8	
13	471	31.83	102.3	
14	498	52.50	159.6	
15	536	60.45	170.7	
16	567	41.35	110.6	
17	596	74.04	188.3	
18	660	23.03	52.8	
19	725	77.36	161.8	
20	826	15.93	29.2	
21	885	43.58	74.6	
22	1,055	41.70	59.9	

Assay Class: High Sensitivity DNA Assay
 Data Path: C:\...ents and Settings\Bioanalyzer\2012-05-02\2012-05-02_003.xad


Created: 5/2/2012 2:54:11 PM
 Modified: 5/2/2012 3:43:40 PM

Electropherogram Summary Continued ...

... Peak table for sample 4 : 33 Lib 1:9

Peak	Size [bp]	Conc. [pg/μl]	Molarity [pmol/l]	Observations
23	6,848	5.46	1.2	
24	10,380	75.00	10.9	Upper Marker
25	12,315	0.00	0.0	

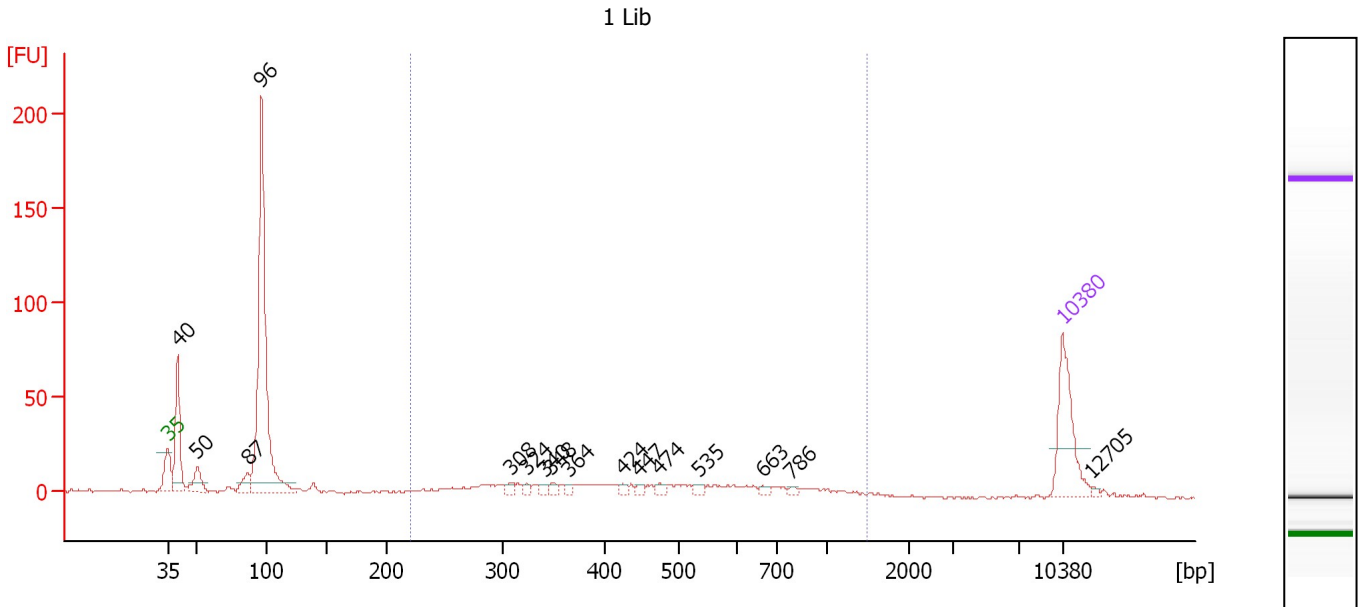
Region table for sample 4 : 33 Lib 1:9

From [bp]	Molarity [pmol/l]	Average Size [bp]	Conc. [pg/μl]	To [bp]	Corr. Area	% of Total	Size distribution in CV [%]	Color
200	4,296.0	556	1,179.32	1,868	1,231.6	88	52.5	

Assay Class: High Sensitivity DNA Assay
 Data Path: C:\...ents and Settings\Bioanalyzer\2012-05-02\2012-05-02_003.xad

Created: 5/2/2012 2:54:11 PM
 Modified: 5/2/2012 3:43:40 PM

Electropherogram Summary Continued ...



Overall Results for sample 5 : 1 Lib

Number of peaks found: 16 Corr. Area 1: 188.1
 Noise: 0.7

Peak table for sample 5 : 1 Lib

Peak	Size [bp]	Conc. [pg/μl]	Molarity [pmol/l]	Observations
1	35	125.00	5,411.3	Lower Marker
2	40	125.86	4,756.7	
3	50	36.27	1,090.7	
4	87	23.23	406.4	
5	96	472.42	7,429.6	
6	308	7.58	37.3	
7	324	5.61	26.3	
8	340	5.72	25.5	
9	348	7.29	31.8	
10	364	5.48	22.8	
11	424	5.50	19.7	
12	447	5.35	18.1	
13	474	6.98	22.3	
14	535	6.15	17.4	
15	663	5.06	11.6	
16	786	4.02	7.8	
17	10,380	75.00	10.9	Upper Marker
18	12,705	0.00	0.0	

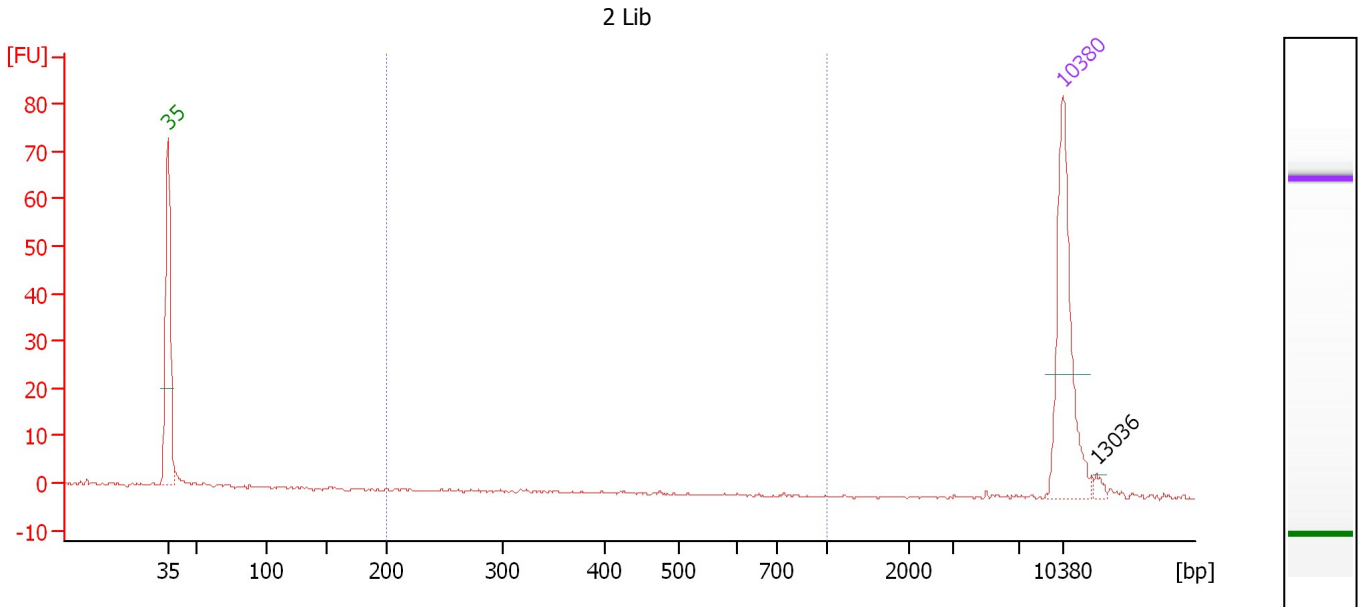
Region table for sample 5 : 1 Lib

From [bp]	Molarity [pmol/l]	Average Size [bp]	Conc. [pg/μl]	To [bp]	Corr. Area	% of Total	Size distribution in CV [%]	Color
221	771.7	506	206.85	1,495	188.1	30	44.9	Blue

Assay Class: High Sensitivity DNA Assay
 Data Path: C:\...ents and Settings\Bioanalyzer\2012-05-02\2012-05-02_003.xad

Created: 5/2/2012 2:54:11 PM
 Modified: 5/2/2012 3:43:40 PM

Electropherogram Summary Continued ...



Overall Results for sample 6 : 2 Lib

Number of peaks found: 1 Corr. Area 1: 0.0
 Noise: 0.2

Peak table for sample 6 : 2 Lib

Peak	Size [bp]	Conc. [pg/μl]	Molarity [pmol/l]	Observations
1	35	125.00	5,411.3	Lower Marker
2	10,380	75.00	10.9	Upper Marker
3	13,036	0.00	0.0	

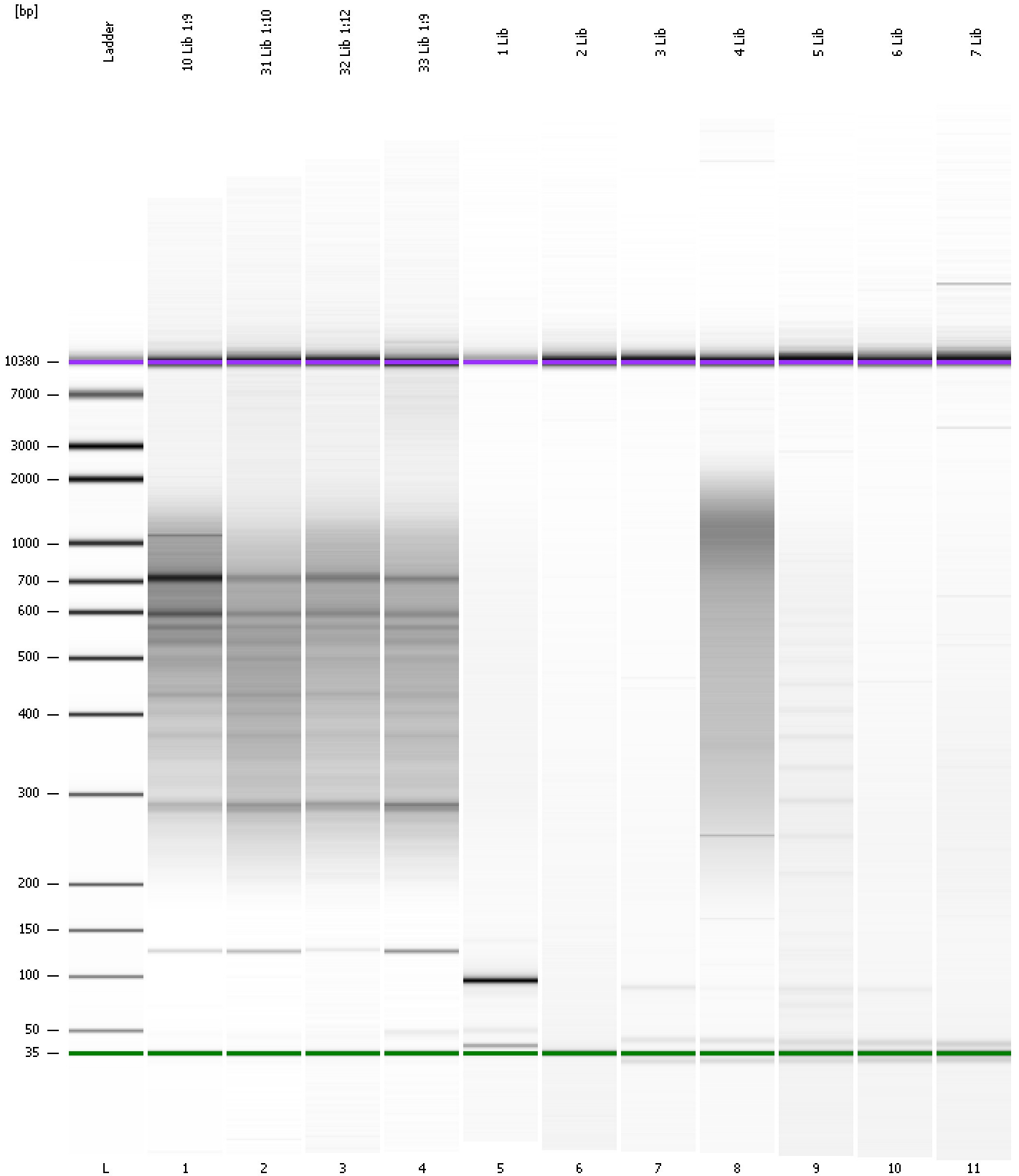
Region table for sample 6 : 2 Lib

From [bp]	Molarity [pmol/l]	Average Size [bp]	Conc. [pg/μl]	To [bp]	Corr. Area	% of Total	Size distribution in CV [%]	Color
200	0.0	0	0.00	1,000	0.0	0	0.0	Blue

Assay Class: High Sensitivity DNA Assay
Data Path: C:\...ents and Settings\Bioanalyzer\2012-05-02\2012-05-02_003.xad

Created: 5/2/2012 2:54:11 PM
Modified: 5/2/2012 3:43:40 PM

Gel Image



Assay Class: High Sensitivity DNA Assay
 Data Path: C:\...ents and Settings\Bioanalyzer\2012-05-02\2012-05-02_003.xad

Created: 5/2/2012 2:54:11 PM
 Modified: 5/2/2012 3:43:40 PM

Run Logbook

Description	Number	Source	Category	Sub Category	Time	Time Zone	User	Host
Run ended on port 1 (Number of wells acquired: 12)		Instrument	Run		5/2/2012 3:35:25 PM	(GMT --07:00) Pacific Standard Time	UC Davis	D8XSMGH1
Run started on port 1 (File: C:\Documents and Settings\Bioanalyzer\2012-05-02\2012-05-02_003.xad)		Instrument	Run		5/2/2012 2:54:11 PM	(GMT --07:00) Pacific Standard Time	UC Davis	D8XSMGH1
Product Number : G2938B		Instrument	Run		5/2/2012 2:54:11 PM	(GMT --07:00) Pacific Standard Time	UC Davis	D8XSMGH1
Name :		Instrument	Run		5/2/2012 2:54:11 PM	(GMT --07:00) Pacific Standard Time	UC Davis	D8XSMGH1
Vendor : Agilent Technologies		Instrument	Run		5/2/2012 2:54:11 PM	(GMT --07:00) Pacific Standard Time	UC Davis	D8XSMGH1
Serial# : DE13701086		Instrument	Run		5/2/2012 2:54:11 PM	(GMT --07:00) Pacific Standard Time	UC Davis	D8XSMGH1
Firmware : C.01.069		Instrument	Run		5/2/2012 2:54:11 PM	(GMT --07:00) Pacific Standard Time	UC Davis	D8XSMGH1
Cartridge : Electrode		Instrument	Run		5/2/2012 2:54:11 PM	(GMT --07:00) Pacific Standard Time	UC Davis	D8XSMGH1