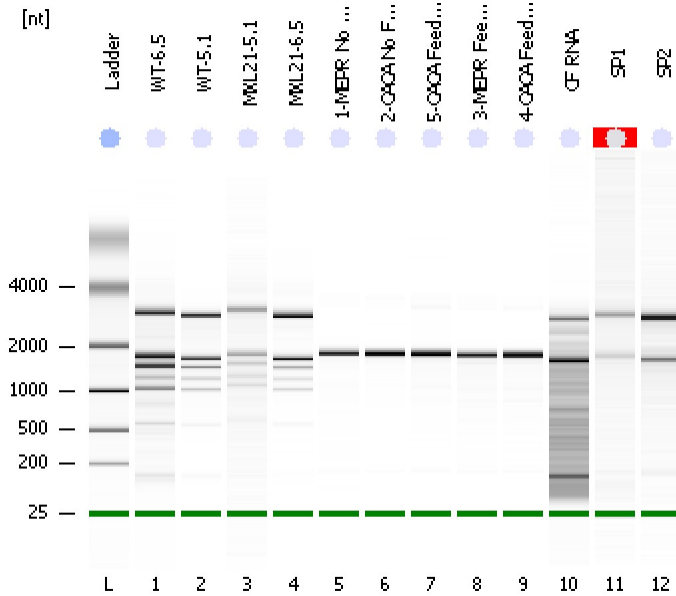


Assay Class: Eukaryote Total RNA Nano
 Data Path: C:\...ents and Settings\Bioanalyzer\2012-05-03\2012-05-03_002.xad

Created: 5/3/2012 12:17:36 PM
 Modified: 5/3/2012 12:44:47 PM

Electrophoresis File Run Summary



Instrument Information:

Instrument Name: DE13701086 Firmware: C.01.069
 Serial#: DE13701086 Type: G2938B

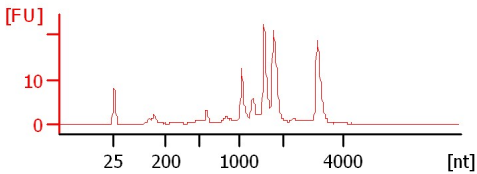
Assay Information:

Assay Origin Path: C:\Program Files\Agilent\2100 bioanalyzer\2100 expert\assays\RNA\Eukaryote Total RNA Nano Series II.xsy
 Assay Class: Eukaryote Total RNA Nano
 Version: 2.6
 Assay Comments: Total RNA Analysis ng sensitivity (Eukaryote)
 © Copyright 2003 - 2009 Agilent Technologies, Inc.

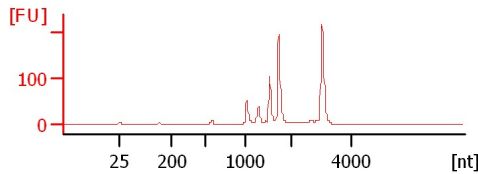
Chip Information:

Chip Lot #:
 Reagent Kit Lot #:
 Chip Comments:

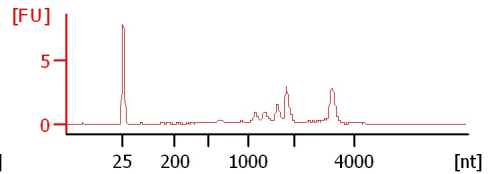
WT-6.5
 RIN: 7.10



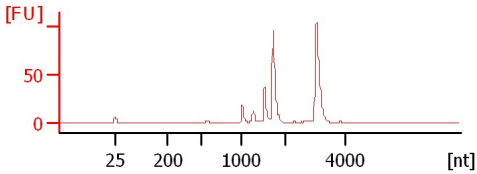
WT-5.1
 RIN: 7.20



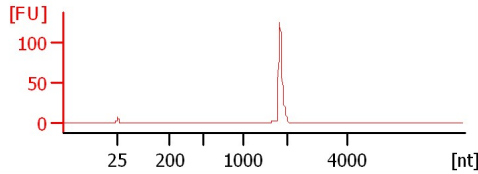
MXL21-5.1
 RIN: 7.60



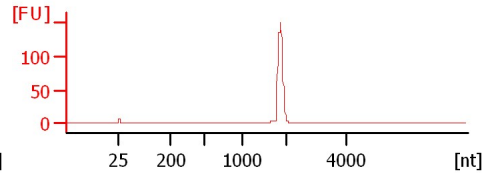
MXL21-6.5
 RIN: 8.20



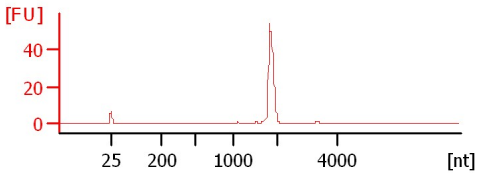
1-MEPR No Feed
 RIN: 9.30



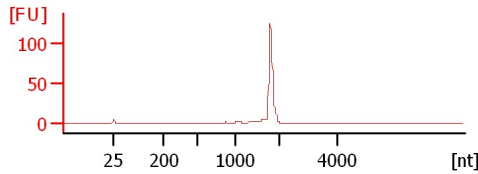
2-CACA No Feed
 RIN: 9.90



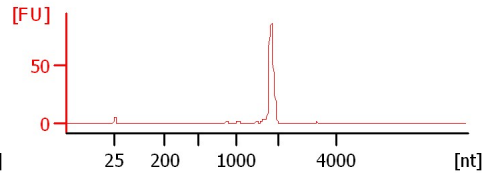
5-CACA Feed diet
 RIN: 9.60



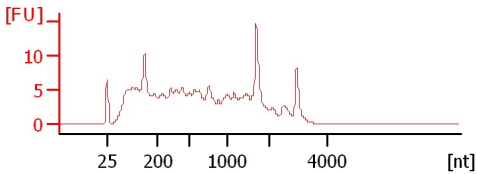
3-MEPR Feed OH
 RIN: 8.50



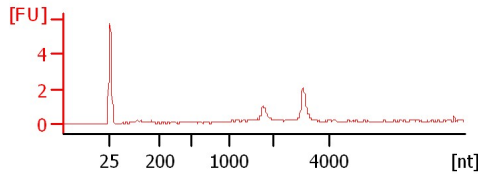
4-CACA Feed OH
 RIN: 9.30



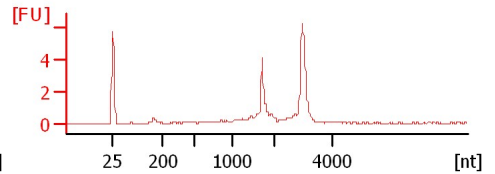
CF RNA
 RIN: 4.80



SP1
 RIN N/A



SP2
 RIN: 8.80



Assay Class: Eukaryote Total RNA Nano
 Data Path: C:\...ents and Settings\Bioanalyzer\2012-05-03\2012-05-03_002.xad

Created: 5/3/2012 12:17:36 PM
 Modified: 5/3/2012 12:44:47 PM

Electrophoresis File Run Summary (Chip Summary)

Sample Name	Sample Comment	Status	Result Label	Result Color
WT-6.5		✓	RIN: 7.10	
WT-5.1		✓	RIN: 7.20	
MXL21-5.1		✓	RIN: 7.60	
MXL21-6.5		✓	RIN: 8.20	
1-MEPR No Feed		✓	RIN: 9.30	
2-CACA No Feed		✓	RIN: 9.90	
5-CACA Feed diet		✓	RIN: 9.60	
3-MEPR Feed OH		✓	RIN: 8.50	
4-CACA Feed OH		✓	RIN: 9.30	
CF RNA		✓	RIN: 4.80	
SP1		✓	RIN N/A	
SP2		✓	RIN: 8.80	
Ladder		✓	All Other Samples	

Chip Lot #

Reagent Kit Lot #

Chip Comments :

Assay Class: Eukaryote Total RNA Nano
Data Path: C:\...ents and Settings\Bioanalyzer\2012-05-03\2012-05-03_002.xad

Created: 5/3/2012 12:17:36 PM
Modified: 5/3/2012 12:44:47 PM

Electrophoresis Assay Details

General Analysis Settings

Number of Available Sample and Ladder Wells (Max.) : 13
Minimum Visible Range [s] : 17
Maximum Visible Range [s] : 70
Start Analysis Time Range [s] : 19
End Analysis Time Range [s] : 69
Ladder Concentration [ng/ μ l] : 150
Lower Marker Concentration [ng/ μ l] : 0
Upper Marker Concentration [ng/ μ l] : 0
Used Lower Marker for Quantitation
Standard Curve Fit is Logarithmic
Show Data Aligned to Lower Marker

Integrator Settings

Integration Start Time [s] : 19
Integration End Time [s] : 69
Slope Threshold : 0.6
Height Threshold [FU] : 0.5
Area Threshold : 0.2
Width Threshold [s] : 0.5
Baseline Plateau [s] : 6

Filter Settings

Filter Width [s] : 0.5
Polynomial Order : 4

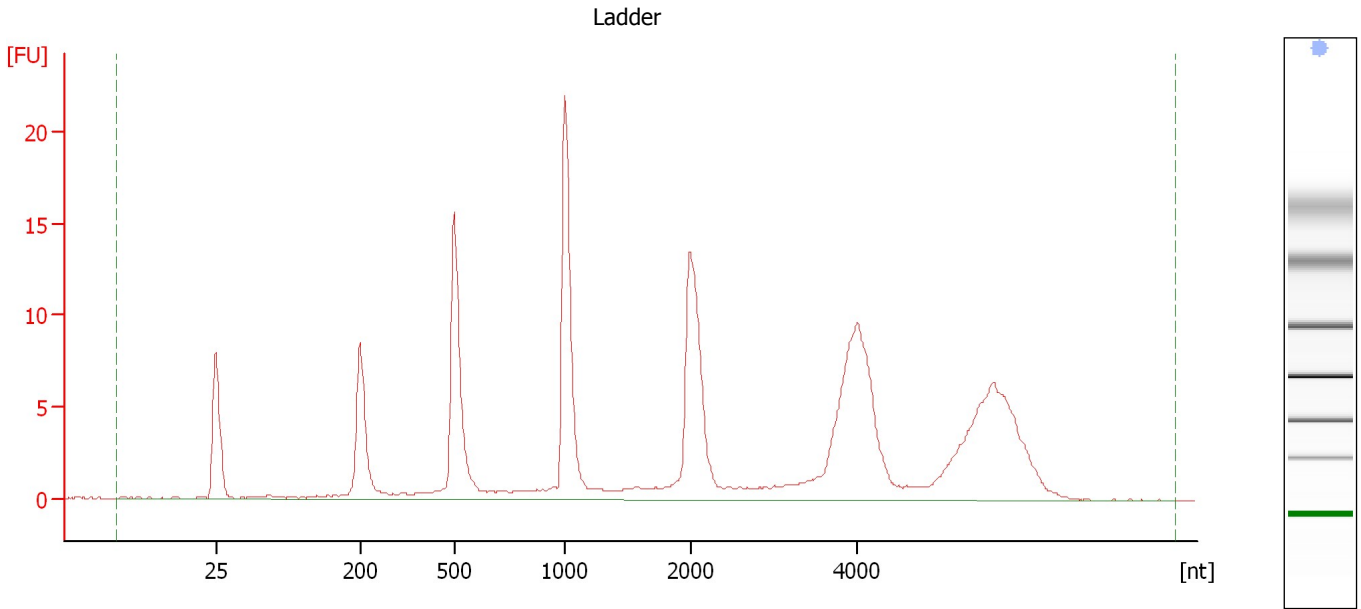
Ladder

Ladder Peak	Size
1	25
2	200
3	500
4	1000
5	2000
6	4000

Assay Class: Eukaryote Total RNA Nano
Data Path: C:\...ents and Settings\Bioanalyzer\2012-05-03\2012-05-03_002.xad

Created: 5/3/2012 12:17:36 PM
Modified: 5/3/2012 12:44:47 PM

Electropherogram Summary



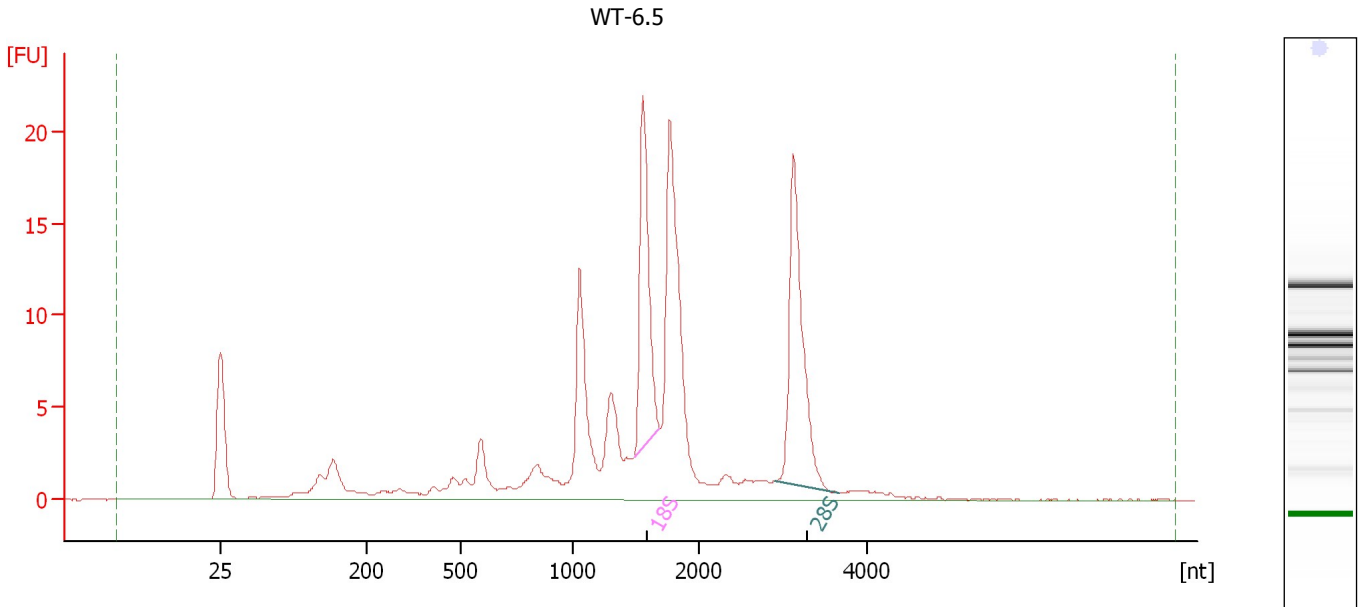
Overall Results for Ladder

RNA Area:	172.4	Result Flagging Color:	
RNA Concentration:	150 ng/μl	Result Flagging Label:	All Other Samples

Assay Class: Eukaryote Total RNA Nano
 Data Path: C:\...ents and Settings\Bioanalyzer\2012-05-03\2012-05-03_002.xad

Created: 5/3/2012 12:17:36 PM
 Modified: 5/3/2012 12:44:47 PM

Electropherogram Summary Continued ...



Overall Results for sample 1 : WT-6.5

RNA Area:	164.3	RNA Integrity Number (RIN):	7.1 (B.02.08, Anomaly Threshold(s) manually adapted)
RNA Concentration:	143 ng/μl	Result Flagging Color:	
rRNA Ratio [28s / 18s]:	1.3	Result Flagging Label:	RIN: 7.10

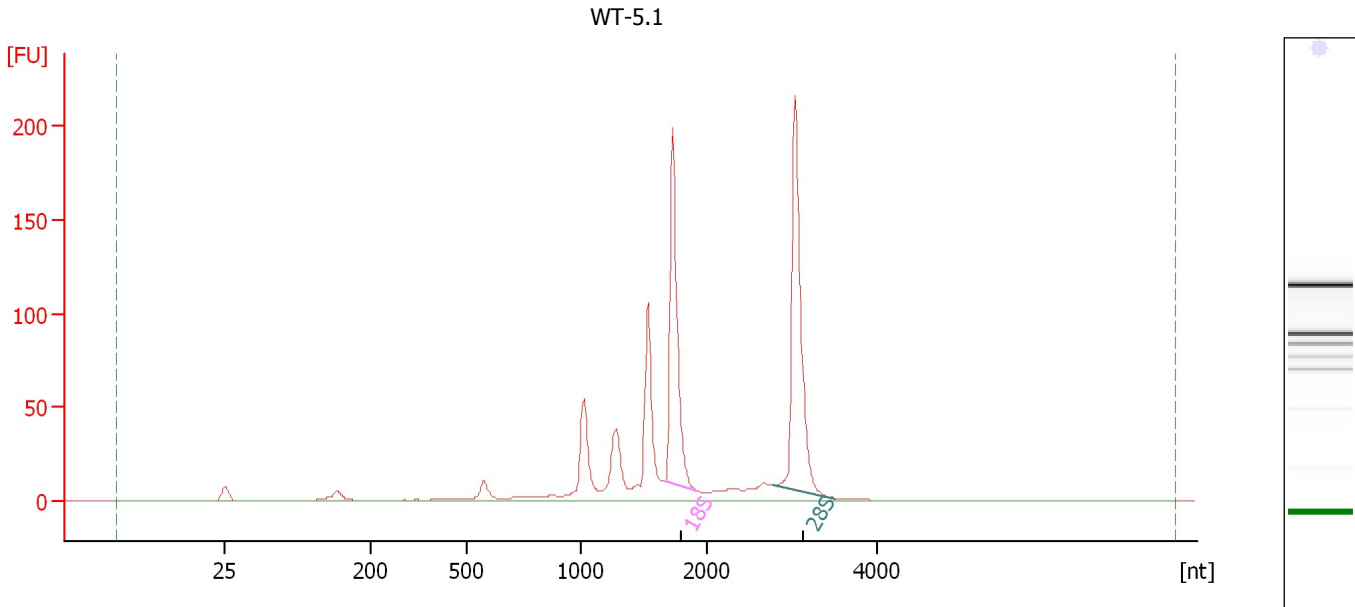
Fragment table for sample 1 : WT-6.5

Name	Start Size [nt]	End Size [nt]	Area	% of total Area
18S	1,485	1,689	19.9	12.1
28S	2,894	3,657	24.9	15.2

Assay Class: Eukaryote Total RNA Nano
 Data Path: C:\...ents and Settings\Bioanalyzer\2012-05-03\2012-05-03_002.xad

Created: 5/3/2012 12:17:36 PM
 Modified: 5/3/2012 12:44:47 PM

Electropherogram Summary Continued ...



Overall Results for sample 2 : WT-5.1

RNA Area:	749.5	RNA Integrity Number (RIN):	7.2 (B.02.08, Anomaly Threshold(s) manually adapted)
RNA Concentration:	652 ng/μl	Result Flagging Color:	
rRNA Ratio [28s / 18s]:	1.3	Result Flagging Label:	RIN: 7.20

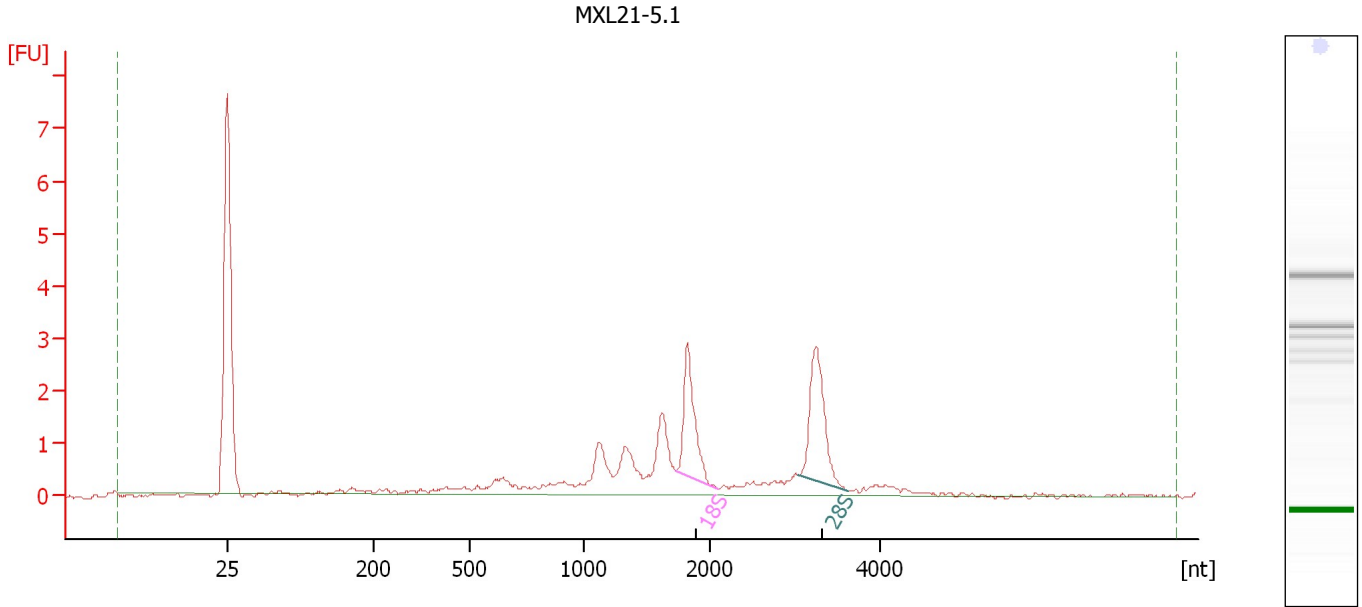
Fragment table for sample 2 : WT-5.1

Name	Start Size [nt]	End Size [nt]	Area	% of total Area
18S	1,669	1,921	158.4	21.1
28S	2,764	3,508	202.0	26.9

Assay Class: Eukaryote Total RNA Nano
Data Path: C:\...ents and Settings\Bioanalyzer\2012-05-03\2012-05-03_002.xad

Created: 5/3/2012 12:17:36 PM
Modified: 5/3/2012 12:44:47 PM

Electropherogram Summary Continued ...



Overall Results for sample 3 : MXL21-5.1

RNA Area: 21.7 RNA Integrity Number (RIN): 7.6 (B.02.08)
RNA Concentration: 19 ng/μl Result Flagging Color:
rRNA Ratio [28s / 18s]: 1.2 Result Flagging Label: RIN: 7.60

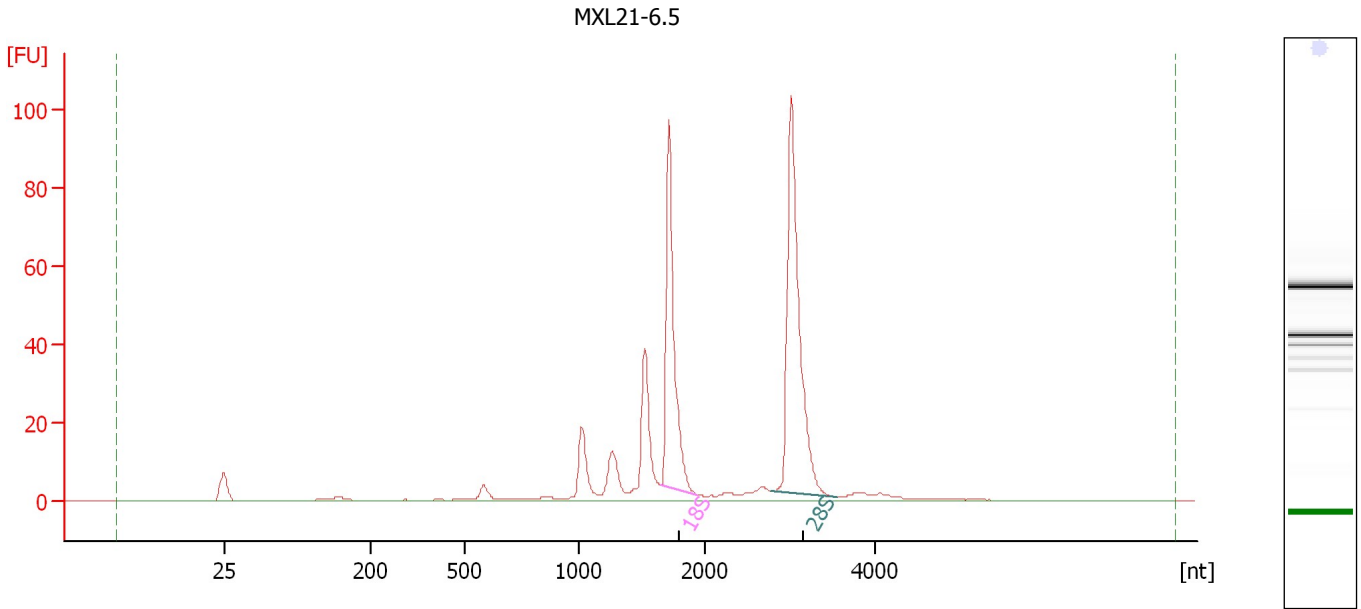
Fragment table for sample 3 : MXL21-5.1

Name	Start Size [nt]	End Size [nt]	Area	% of total Area
18S	1,737	2,097	3.1	14.4
28S	3,028	3,632	3.9	17.8

Assay Class: Eukaryote Total RNA Nano
Data Path: C:\...ents and Settings\Bioanalyzer\2012-05-03\2012-05-03_002.xad

Created: 5/3/2012 12:17:36 PM
Modified: 5/3/2012 12:44:47 PM

Electropherogram Summary Continued ...



Overall Results for sample 4 : MXL21-6.5

RNA Area:	362.0	RNA Integrity Number (RIN):	8.2 (B.02.08, Anomaly Threshold(s) manually adapted)
RNA Concentration:	315 ng/μl	Result Flagging Color:	
rRNA Ratio [28s / 18s]:	1.4	Result Flagging Label:	RIN: 8.20

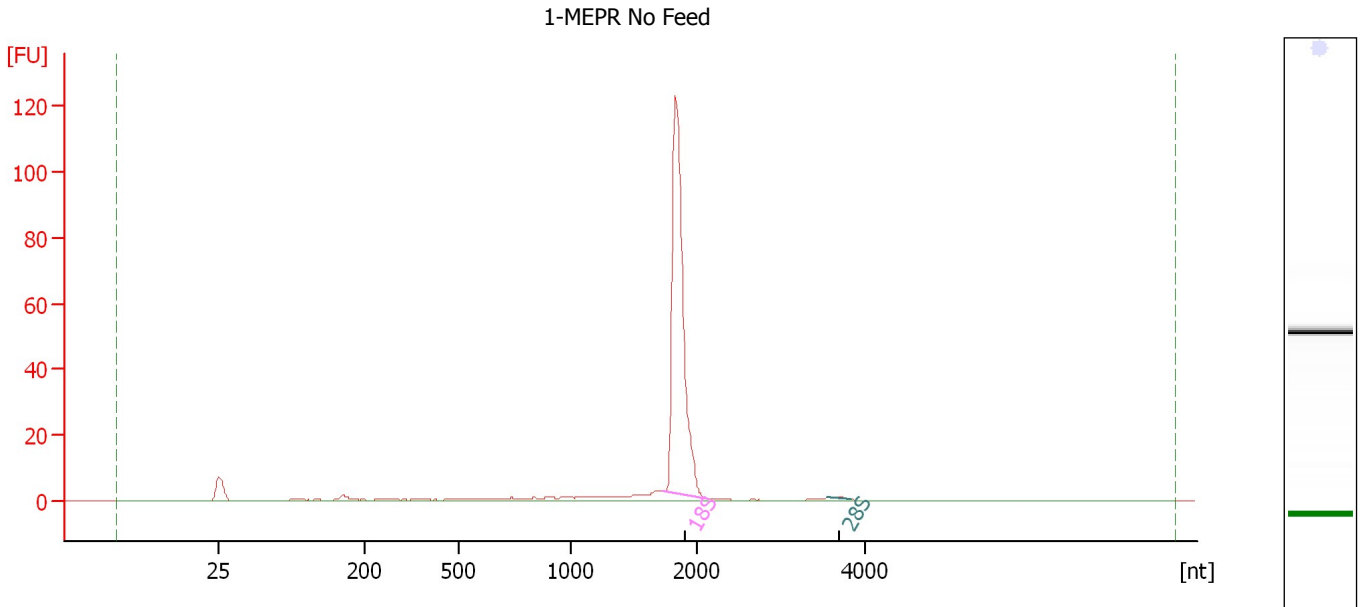
Fragment table for sample 4 : MXL21-6.5

Name	Start Size [nt]	End Size [nt]	Area	% of total Area
18S	1,650	1,937	87.7	24.2
28S	2,778	3,561	124.5	34.4

Assay Class: Eukaryote Total RNA Nano
 Data Path: C:\...ents and Settings\Bioanalyzer\2012-05-03\2012-05-03_002.xad

Created: 5/3/2012 12:17:36 PM
 Modified: 5/3/2012 12:44:47 PM

Electropherogram Summary Continued ...



Overall Results for sample 5 : 1-MEPR No Feed

RNA Area:	210.5	RNA Integrity Number (RIN):	9.3 (B.02.08, Anomaly Threshold(s) manually adapted)
RNA Concentration:	183 ng/μl	Result Flagging Color:	
rRNA Ratio [28s / 18s]:	0.0	Result Flagging Label:	RIN: 9.30

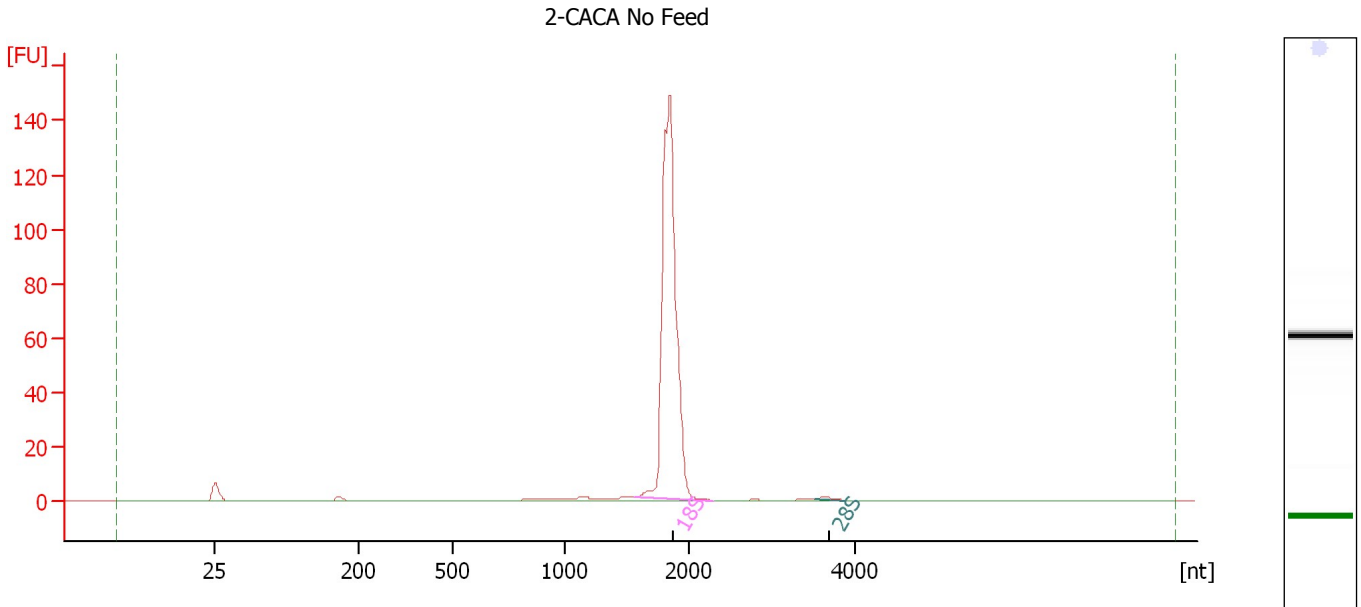
Fragment table for sample 5 : 1-MEPR No Feed

Name	Start Size [nt]	End Size [nt]	Area	% of total Area
18S	1,721	2,143	151.9	72.1
28S	3,544	3,837	0.6	0.3

Assay Class: Eukaryote Total RNA Nano
 Data Path: C:\...ents and Settings\Bioanalyzer\2012-05-03\2012-05-03_002.xad

Created: 5/3/2012 12:17:36 PM
 Modified: 5/3/2012 12:44:47 PM

Electropherogram Summary Continued ...



Overall Results for sample 6 : 2-CACA No Feed

RNA Area:	276.0	RNA Integrity Number (RIN):	9.9 (B.02.08, Anomaly Threshold(s) manually adapted)
RNA Concentration:	240 ng/μl	Result Flagging Color:	
rRNA Ratio [28s / 18s]:	0.0	Result Flagging Label:	RIN: 9.90

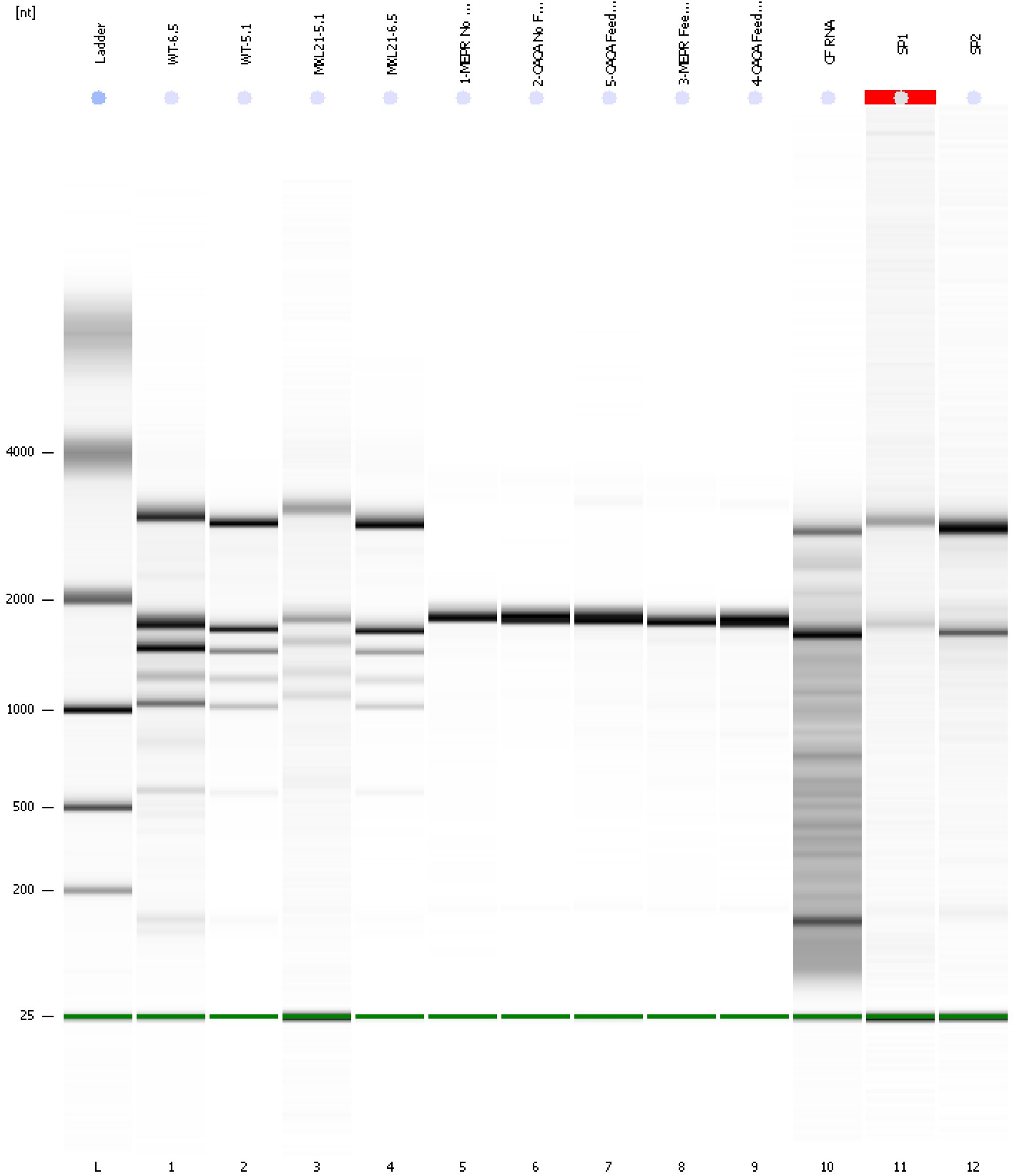
Fragment table for sample 6 : 2-CACA No Feed

Name	Start Size [nt]	End Size [nt]	Area	% of total Area
18S	1,571	2,281	240.6	87.1
28S	3,514	3,874	1.4	0.5

Assay Class: Eukaryote Total RNA Nano
Data Path: C:\...ents and Settings\Bioanalyzer\2012-05-03\2012-05-03_002.xad

Created: 5/3/2012 12:17:36 PM
Modified: 5/3/2012 12:44:47 PM

Gel Image



Assay Class: Eukaryote Total RNA Nano
 Data Path: C:\...ents and Settings\Bioanalyzer\2012-05-03\2012-05-03_002.xad

Created: 5/3/2012 12:17:36 PM
 Modified: 5/3/2012 12:44:47 PM

Run Logbook

Description	Number	Source	Category	Sub Category	Time	Time Zone	User	Host
Run ended on port 1 (Number of wells acquired: 13)		Instrument	Run		5/3/2012 12:41:24 PM	(GMT --07:00) Pacific Standard Time	UC Davis	D8XSMGH1
Run started on port 1 (File: C:\Documents and Settings\Bioanalyzer\2012-05-03\2012-05-03_002.xad)		Instrument	Run		5/3/2012 12:17:42 PM	(GMT --07:00) Pacific Standard Time	UC Davis	D8XSMGH1
Product Number : G2938B		Instrument	Run		5/3/2012 12:17:42 PM	(GMT --07:00) Pacific Standard Time	UC Davis	D8XSMGH1
Name :		Instrument	Run		5/3/2012 12:17:42 PM	(GMT --07:00) Pacific Standard Time	UC Davis	D8XSMGH1
Vendor : Agilent Technologies		Instrument	Run		5/3/2012 12:17:42 PM	(GMT --07:00) Pacific Standard Time	UC Davis	D8XSMGH1
Serial# : DE13701086		Instrument	Run		5/3/2012 12:17:42 PM	(GMT --07:00) Pacific Standard Time	UC Davis	D8XSMGH1
Firmware : C.01.069		Instrument	Run		5/3/2012 12:17:42 PM	(GMT --07:00) Pacific Standard Time	UC Davis	D8XSMGH1
Cartridge : Electrode		Instrument	Run		5/3/2012 12:17:42 PM	(GMT --07:00) Pacific Standard Time	UC Davis	D8XSMGH1