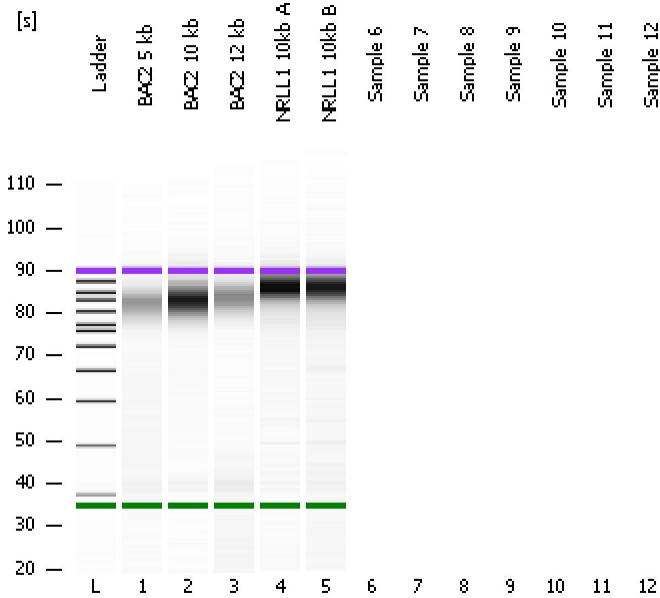


Assay Class: DNA 12000  
Data Path: C:\...ents and Settings\Bioanalyzer\2012-05-03\2012-05-03\_006.xad

Created: 5/3/2012 3:54:30 PM  
Modified: 5/3/2012 5:13:09 PM

**Electrophoresis File Run Summary**



Instrument Information:

Instrument Name: DE13701086      Firmware: C.01.069  
Serial#: DE13701086      Type: G2938B

Assay Information:

Assay Origin Path: C:\Program Files\Agilent\2100 bioanalyzer\2100 expert\assays\dsDNA\DNA 12000 Series II.xsy

Assay Class: DNA 12000

Version: 2.4

Assay Comments: DNA Analysis 100 -12000 bp

© Copyright 2003-2009 Agilent Technologies, Inc.

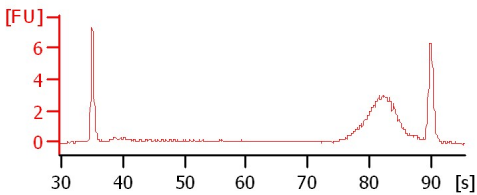
Chip Information:

Chip Lot #:

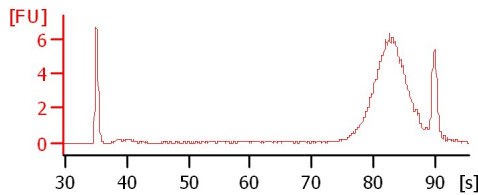
Reagent Kit Lot #:

Chip Comments:

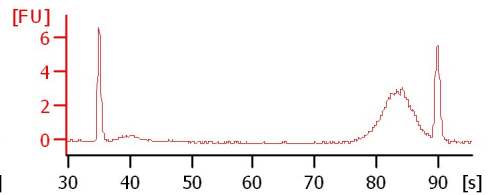
**BAC2 5 kb**



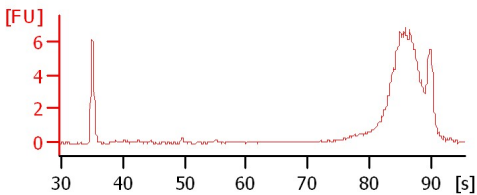
**BAC2 10 kb**



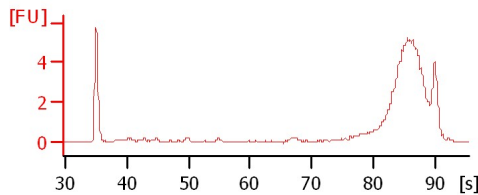
**BAC2 12 kb**



**NRLL1 10kb A**



**NRLL1 10kb B**



Assay Class: DNA 12000  
Data Path: C:\...ents and Settings\Bioanalyzer\2012-05-03\2012-05-03\_006.xad

Created: 5/3/2012 3:54:30 PM  
Modified: 5/3/2012 5:13:09 PM

**Electrophoresis File Run Summary (Chip Summary)**

Sample Name	Sample Comment	Rest. Digest	Status	Observation	Result Label	Result Color
BAC2 5 kb		<input type="checkbox"/>	✓			
BAC2 10 kb		<input type="checkbox"/>	✓			
BAC2 12 kb		<input type="checkbox"/>	✓			
NRLL1 10kb A		<input type="checkbox"/>	✓			
NRLL1 10kb B		<input type="checkbox"/>	✓			
Sample 6		<input type="checkbox"/>				
Sample 7		<input type="checkbox"/>				
Sample 8		<input type="checkbox"/>				
Sample 9		<input type="checkbox"/>				
Sample 10		<input type="checkbox"/>				
Sample 11		<input type="checkbox"/>				
Sample 12		<input type="checkbox"/>				
Ladder		<input type="checkbox"/>	✓			

**Chip Lot #**

**Reagent Kit Lot #**

**Chip Comments :**

Assay Class: DNA 12000  
Data Path: C:\...ents and Settings\Bioanalyzer\2012-05-03\2012-05-03\_006.xad

Created: 5/3/2012 3:54:30 PM  
Modified: 5/3/2012 5:13:09 PM

**Electrophoresis Assay Details**

**General Analysis Settings**

Number of Available Sample and Ladder Wells (Max.) : 13  
Minimum Visible Range [s] : 20  
Maximum Visible Range [s] : 99  
Start Analysis Time Range [s] : 20  
End Analysis Time Range [s] : 98.95  
Ladder Concentration [ng/μl] : 44  
Uses Standard Area for Ladder Fragments  
Lower Marker Concentration [ng/μl] : 8.3  
Upper Marker Concentration [ng/μl] : 4.2  
Used Upper Marker for Quantitation  
This is a Qualitative Assay Only  
Standard Curve Fit is Point to Point  
Show Data Aligned to Lower and Upper Marker

**Integrator Settings**

Integration Start Time [s] : 20  
Integration End Time [s] : 98.95  
Slope Threshold : 0.8  
Height Threshold [FU] : 20  
Area Threshold : 0.1  
Width Threshold [s] : 0.5  
Baseline Plateau [s] : 0.5

**Filter Settings**

Filter Width [s] : 0.5  
Polynomial Order : 4

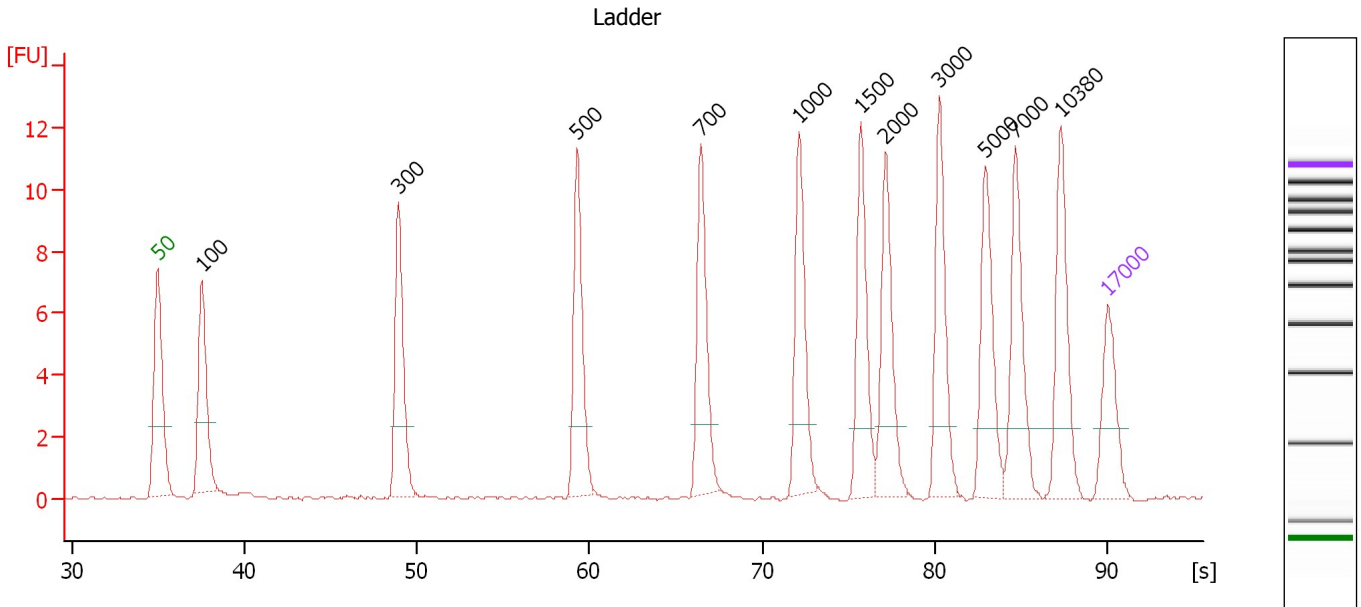
**Ladder**

Ladder Peak	Size	Area
1	50	120
2	100	48
3	300	61
4	500	77
5	700	81
6	1000	86
7	1500	92
8	2000	92
9	3000	96
10	5000	100
11	7000	98
12	10380	102
13	17000	110

Assay Class: DNA 12000  
 Data Path: C:\...ents and Settings\Bioanalyzer\2012-05-03\2012-05-03\_006.xad

Created: 5/3/2012 3:54:30 PM  
 Modified: 5/3/2012 5:13:09 PM

**Electropherogram Summary**



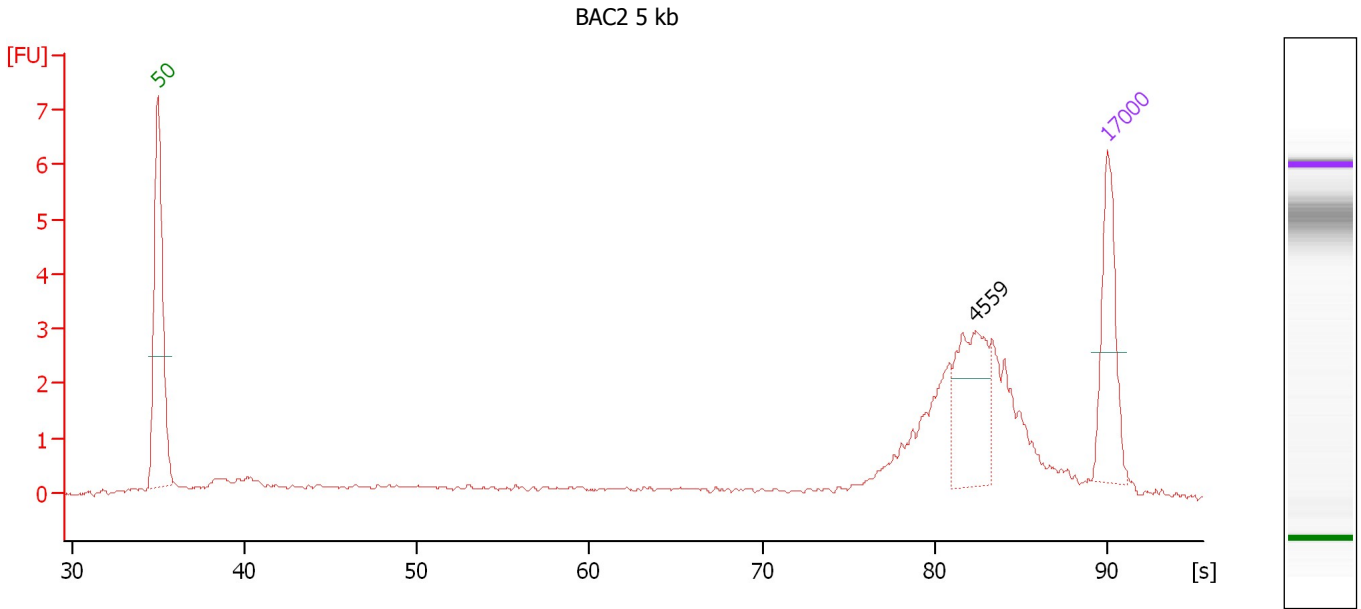
**Peak table for Ladder**

Peak	Size [bp]	Conc. [ng/μl]	Molarity [nmol/l]	Observations
1	50	8.30	251.5	Lower Marker
2	100	4.00	60.6	Ladder Peak
3	300	4.00	20.2	Ladder Peak
4	500	4.00	12.1	Ladder Peak
5	700	4.00	8.7	Ladder Peak
6	1,000	4.00	6.1	Ladder Peak
7	1,500	4.00	4.0	Ladder Peak
8	2,000	4.00	3.0	Ladder Peak
9	3,000	4.00	2.0	Ladder Peak
10	5,000	4.00	1.2	Ladder Peak
11	7,000	4.00	0.9	Ladder Peak
12	10,380	4.00	0.6	Ladder Peak
13	17,000	4.20	0.4	Upper Marker

Assay Class: DNA 12000  
 Data Path: C:\...ents and Settings\Bioanalyzer\2012-05-03\2012-05-03\_006.xad

Created: 5/3/2012 3:54:30 PM  
 Modified: 5/3/2012 5:13:09 PM

**Electropherogram Summary Continued ...**



**Setpoint Deviations for sample 1 : BAC2 5 kb**

Height Threshold [FU] : 2

**Overall Results for sample 1 : BAC2 5 kb**

Number of peaks found: 1

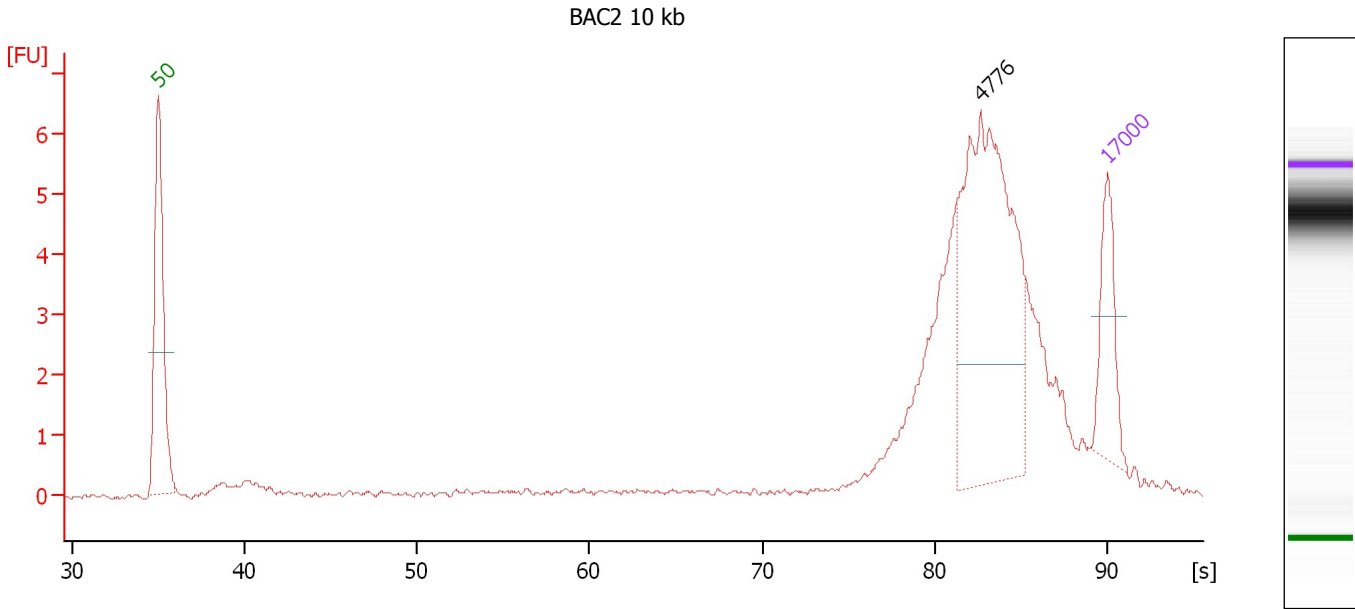
**Peak table for sample 1 : BAC2 5 kb**

Peak	Size [bp]	Conc. [ng/μl]	Molarity [nmol/l]	Observations
1	50	8.30	251.5	Lower Marker
2	4,559	4.91	1.6	
3	17,000	4.20	0.4	Upper Marker

Assay Class: DNA 12000  
Data Path: C:\...ents and Settings\Bioanalyzer\2012-05-03\2012-05-03\_006.xad

Created: 5/3/2012 3:54:30 PM  
Modified: 5/3/2012 5:13:09 PM

**Electropherogram Summary Continued ...**



**Setpoint Deviations for sample 2 : BAC2 10 kb**

Height Threshold [FU] : 2

**Overall Results for sample 2 : BAC2 10 kb**

Number of peaks found: 1

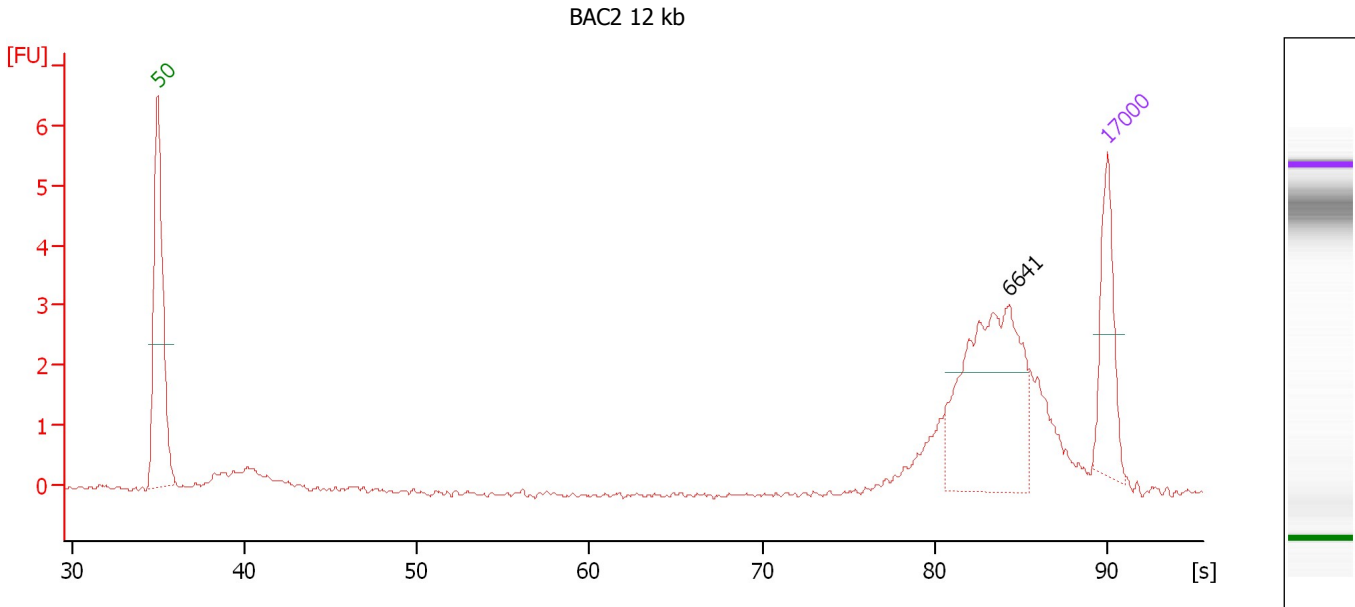
**Peak table for sample 2 : BAC2 10 kb**

Peak	Size [bp]	Conc. [ng/μl]	Molarity [nmol/l]	Observations
1	50	8.30	251.5	Lower Marker
2	4,776	20.35	6.5	
3	17,000	4.20	0.4	Upper Marker

Assay Class: DNA 12000  
 Data Path: C:\...ents and Settings\Bioanalyzer\2012-05-03\2012-05-03\_006.xad

Created: 5/3/2012 3:54:30 PM  
 Modified: 5/3/2012 5:13:09 PM

**Electropherogram Summary Continued ...**



**Setpoint Deviations for sample 3 : BAC2 12 kb**

Height Threshold [FU] : 2

**Overall Results for sample 3 : BAC2 12 kb**

Number of peaks found: 1

**Peak table for sample 3 : BAC2 12 kb**

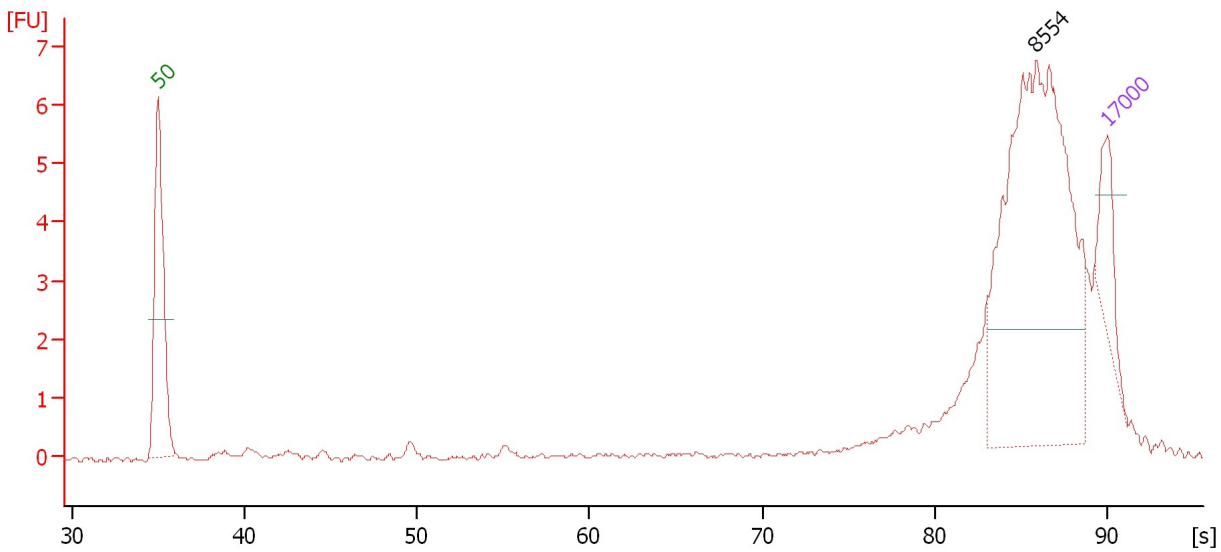
Peak	Size [bp]	Conc. [ng/μl]	Molarity [nmol/l]	Observations
1	50	8.30	251.5	Lower Marker
2	6,641	11.86	2.7	
3	17,000	4.20	0.4	Upper Marker

Assay Class: DNA 12000  
 Data Path: C:\...ents and Settings\Bioanalyzer\2012-05-03\2012-05-03\_006.xad

Created: 5/3/2012 3:54:30 PM  
 Modified: 5/3/2012 5:13:09 PM

**Electropherogram Summary Continued ...**

NRLL1 10kb A



**Setpoint Deviations for sample 4 : NRLL1 10kb A**

Height Threshold [FU] : 2

**Overall Results for sample 4 : NRLL1 10kb A**

Number of peaks found: 1

**Peak table for sample 4 : NRLL1 10kb A**

Peak	Size [bp]	Conc. [ng/μl]	Molarity [nmol/l]	Observations
1	50	8.30	251.5	Lower Marker
2	8,554	42.20	7.5	
3	17,000	4.20	0.4	Upper Marker

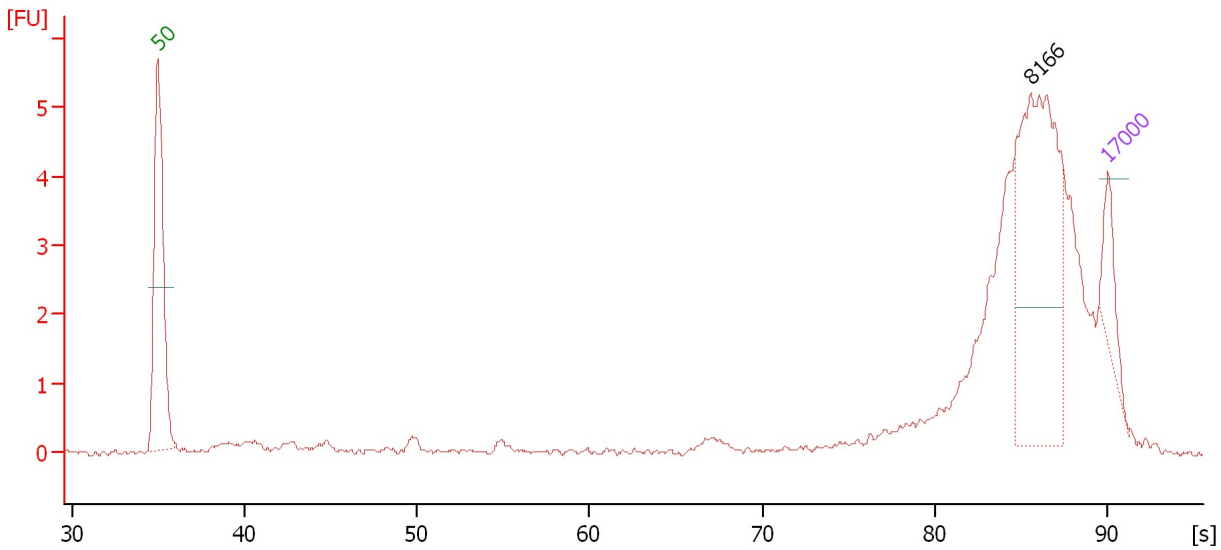


Assay Class: DNA 12000  
Data Path: C:\...ents and Settings\Bioanalyzer\2012-05-03\2012-05-03\_006.xad

Created: 5/3/2012 3:54:30 PM  
Modified: 5/3/2012 5:13:09 PM

**Electropherogram Summary Continued ...**

NRLL1 10kb B



**Setpoint Deviations for sample 5 : NRLL1 10kb B**

Height Threshold [FU] : 2

**Overall Results for sample 5 : NRLL1 10kb B**

Number of peaks found: 1

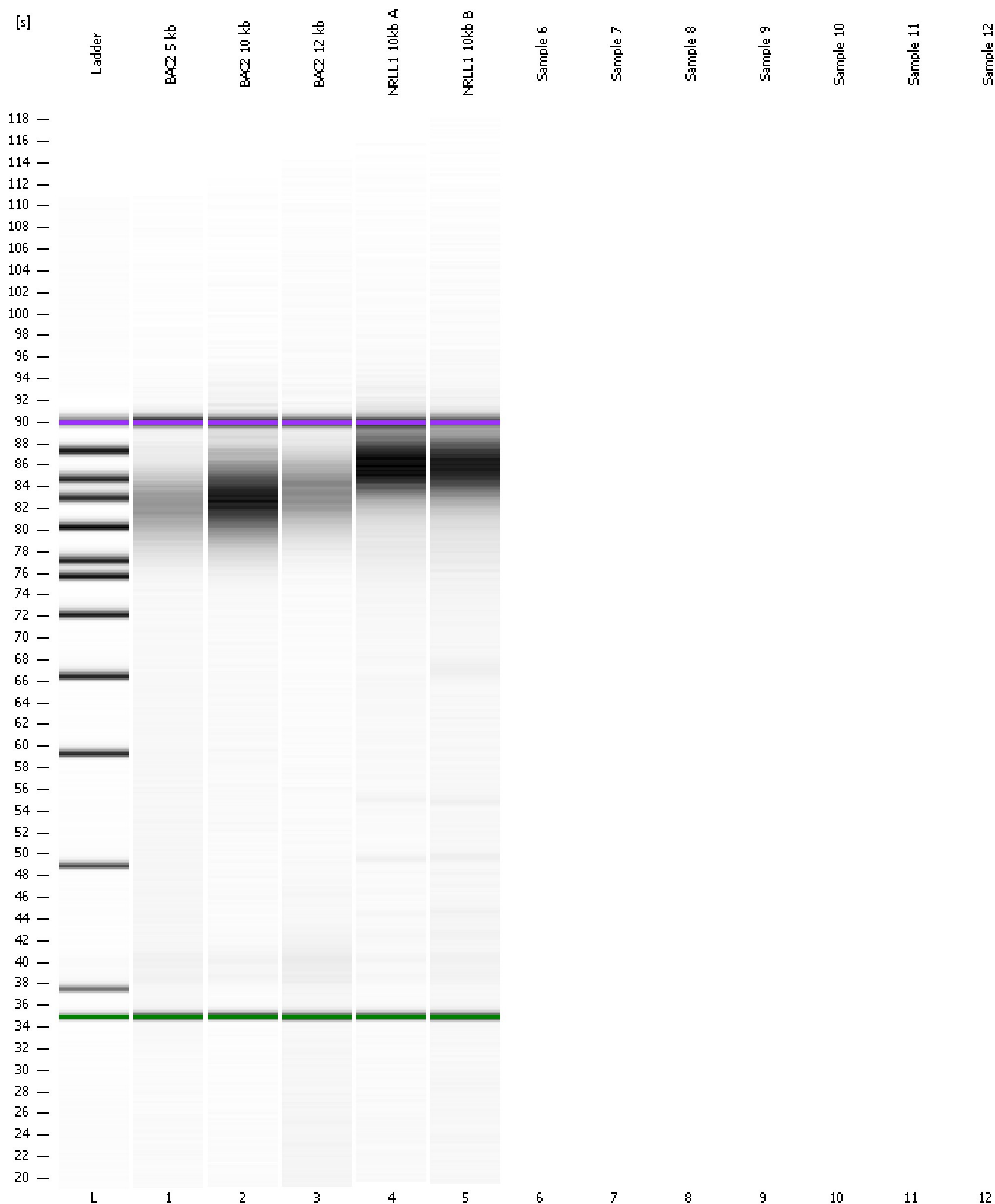
**Peak table for sample 5 : NRLL1 10kb B**

Peak	Size [bp]	Conc. [ng/μl]	Molarity [nmol/l]	Observations
1	50	8.30	251.5	Lower Marker
2	8,166	32.08	6.0	
3	17,000	4.20	0.4	Upper Marker

Assay Class: DNA 12000  
Data Path: C:\...ents and Settings\Bioanalyzer\2012-05-03\2012-05-03\_006.xad

Created: 5/3/2012 3:54:30 PM  
Modified: 5/3/2012 5:13:09 PM

**Gel Image**



Assay Class: DNA 12000  
 Data Path: C:\...ents and Settings\Bioanalyzer\2012-05-03\2012-05-03\_006.xad

Created: 5/3/2012 3:54:30 PM  
 Modified: 5/3/2012 5:13:09 PM

**Run Logbook**

Description	Number	Source	Category	Sub Category	Time	Time Zone	User	Host
Run ended on port 1 (Number of wells acquired: 6)		Instrument	Run		5/3/2012 4:14:31 PM	(GMT --07:00) Pacific Standard Time	UC Davis	D8XSMGH1
Run started on port 1 (File: C:\Documents and Settings\Bioanalyzer\2012-05-03\2012-05-03_006.xad)		Instrument	Run		5/3/2012 3:54:30 PM	(GMT --07:00) Pacific Standard Time	UC Davis	D8XSMGH1
Product Number : G2938B		Instrument	Run		5/3/2012 3:54:30 PM	(GMT --07:00) Pacific Standard Time	UC Davis	D8XSMGH1
Name :		Instrument	Run		5/3/2012 3:54:30 PM	(GMT --07:00) Pacific Standard Time	UC Davis	D8XSMGH1
Vendor : Agilent Technologies		Instrument	Run		5/3/2012 3:54:30 PM	(GMT --07:00) Pacific Standard Time	UC Davis	D8XSMGH1
Serial# : DE13701086		Instrument	Run		5/3/2012 3:54:30 PM	(GMT --07:00) Pacific Standard Time	UC Davis	D8XSMGH1
Firmware : C.01.069		Instrument	Run		5/3/2012 3:54:30 PM	(GMT --07:00) Pacific Standard Time	UC Davis	D8XSMGH1
Cartridge : Electrode		Instrument	Run		5/3/2012 3:54:30 PM	(GMT --07:00) Pacific Standard Time	UC Davis	D8XSMGH1