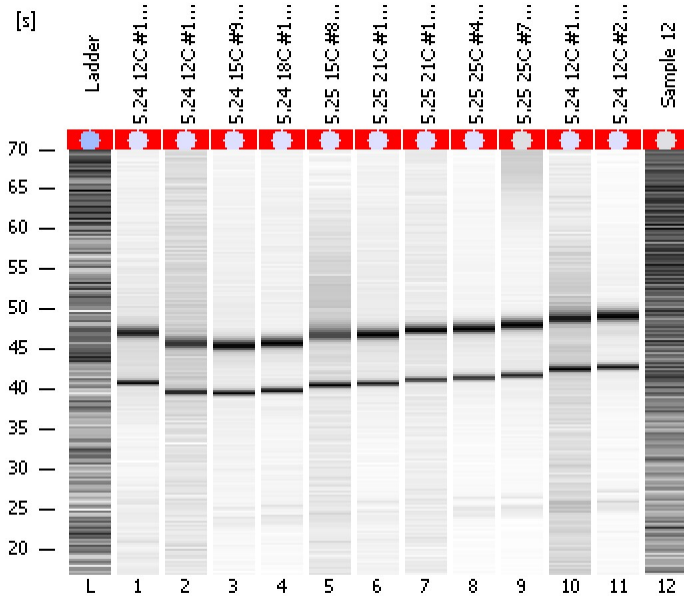


Assay Class: Eukaryote Total RNA Nano
Data Path: C:\...ents and Settings\Bioanalyzer\2012-05-04\2012-05-04_001.xad

Created: 5/4/2012 9:13:57 AM
Modified: 5/4/2012 9:37:49 AM

Electrophoresis File Run Summary



Instrument Information:

Instrument Name: DE13701086 Firmware: C.01.069
Serial#: DE13701086 Type: G2938B

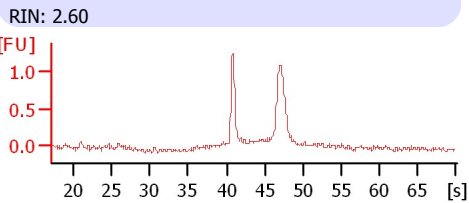
Assay Information:

Assay Origin Path: C:\Program Files\Agilent\2100 bioanalyzer\2100 expert\assays\RNA\Eukaryote Total RNA Nano Series II.xsy
Assay Class: Eukaryote Total RNA Nano
Version: 2.6
Assay Comments: Total RNA Analysis ng sensitivity (Eukaryote)
© Copyright 2003 - 2009 Agilent Technologies, Inc.

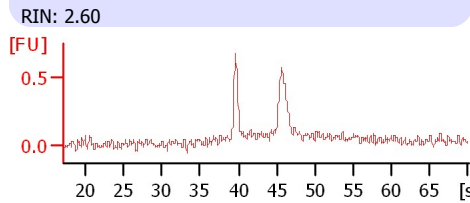
Chip Information:

Chip Lot #:
Reagent Kit Lot #:
Chip Comments:

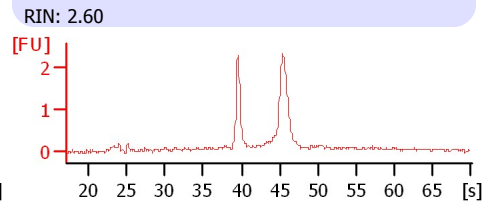
5.24 12C #12a gill RNA



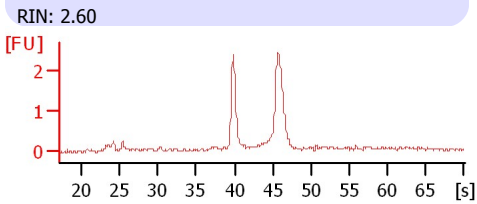
5.24 12C #13a gill RNA



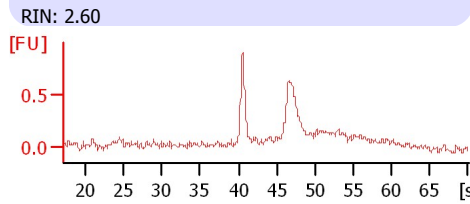
5.24 15C #9 gill RNA



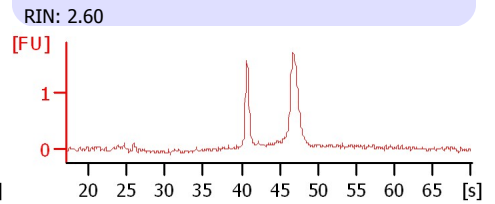
5.24 18C #10 gill RNA



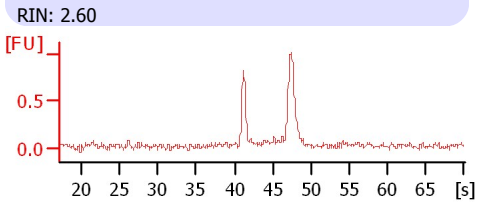
5.25 15C #8 gill RNA



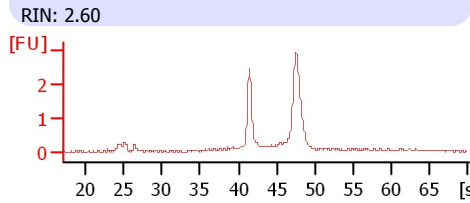
5.25 21C #10 gill RNA



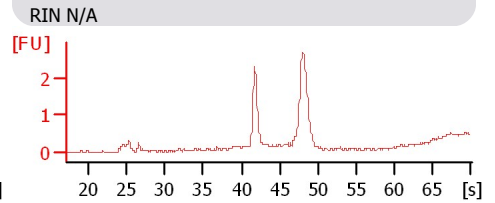
5.25 21C #13 gill RNA



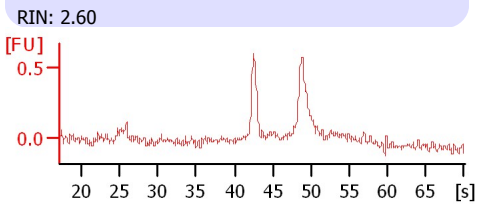
5.25 25C #4 gill RNA



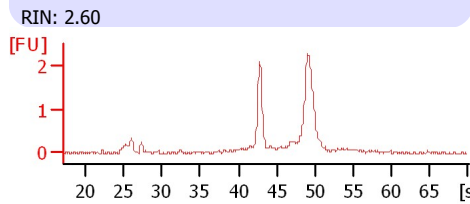
5.25 25C #7 gill RNA



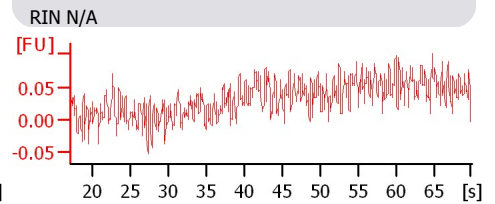
5.24 12C #1 liver RNA



5.24 12C #2 liver RNA



Sample 12



Assay Class: Eukaryote Total RNA Nano
Data Path: C:\...ents and Settings\Bioanalyzer\2012-05-04\2012-05-04_001.xad

Created: 5/4/2012 9:13:57 AM
Modified: 5/4/2012 9:37:49 AM

Electrophoresis File Run Summary (Chip Summary)

Sample Name	Sample Comment	Status	Result Label	Result Color
5.24 12C #12a gill RNA		✓	RIN: 2.60	
5.24 12C #13a gill RNA		✓	RIN: 2.60	
5.24 15C #9 gill RNA		✓	RIN: 2.60	
5.24 18C #10 gill RNA		✓	RIN: 2.60	
5.25 15C #8 gill RNA		✓	RIN: 2.60	
5.25 21C #10 gill RNA		✓	RIN: 2.60	
5.25 21C #13 gill RNA		✓	RIN: 2.60	
5.25 25C #4 gill RNA		✓	RIN: 2.60	
5.25 25C #7 gill RNA		✓	RIN N/A	
5.24 12C #1 liver RNA		✓	RIN: 2.60	
5.24 12C #2 liver RNA		✓	RIN: 2.60	
Sample 12		✓	RIN N/A	
Ladder		✓	All Other Samples	

Chip Lot #

Reagent Kit Lot #

Chip Comments :

Assay Class: Eukaryote Total RNA Nano
Data Path: C:\...ents and Settings\Bioanalyzer\2012-05-04\2012-05-04_001.xad

Created: 5/4/2012 9:13:57 AM
Modified: 5/4/2012 9:37:49 AM

Electrophoresis Assay Details

General Analysis Settings

Number of Available Sample and Ladder Wells (Max.) : 13
Minimum Visible Range [s] : 17
Maximum Visible Range [s] : 70
Start Analysis Time Range [s] : 19
End Analysis Time Range [s] : 69
Ladder Concentration [ng/μl] : 150
Lower Marker Concentration [ng/μl] : 0
Upper Marker Concentration [ng/μl] : 0
Used Lower Marker for Quantitation
Standard Curve Fit is Logarithmic
Show Data Aligned to Lower Marker

Integrator Settings

Integration Start Time [s] : 19
Integration End Time [s] : 69
Slope Threshold : 0.6
Height Threshold [FU] : 0.5
Area Threshold : 0.2
Width Threshold [s] : 0.5
Baseline Plateau [s] : 6

Filter Settings

Filter Width [s] : 0.5
Polynomial Order : 4

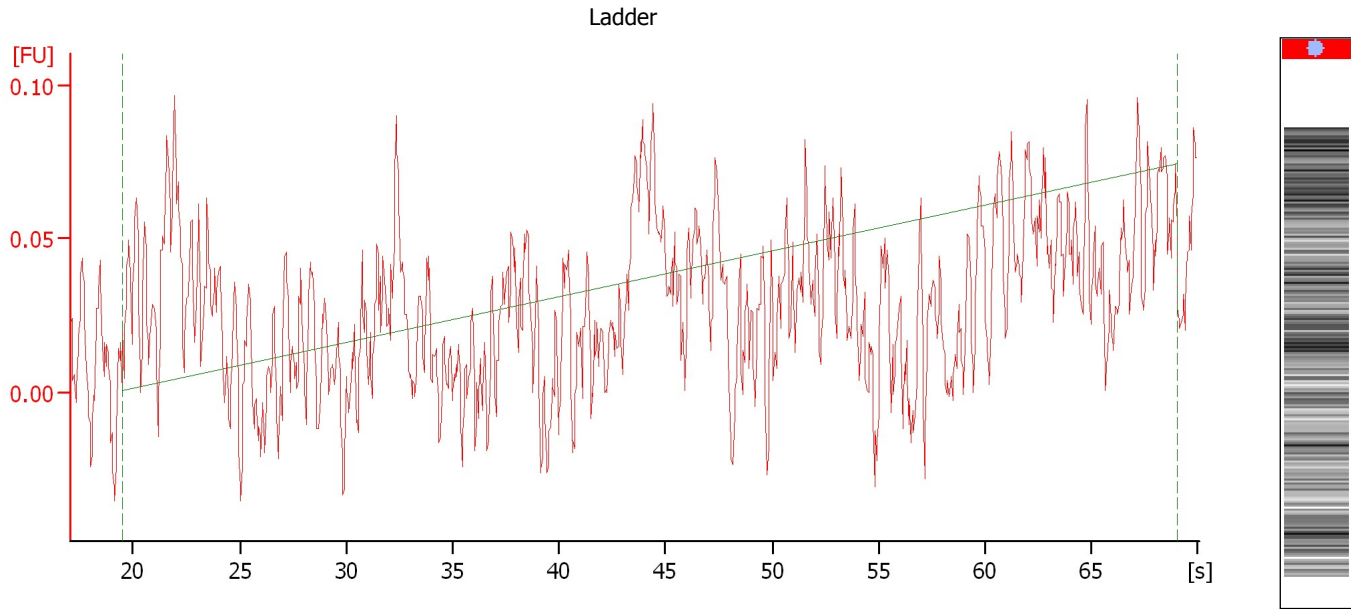
Ladder

Ladder Peak	Size
1	25
2	200
3	500
4	1000
5	2000
6	4000

Assay Class: Eukaryote Total RNA Nano
Data Path: C:\...ents and Settings\Bioanalyzer\2012-05-04\2012-05-04_001.xad

Created: 5/4/2012 9:13:57 AM
Modified: 5/4/2012 9:37:49 AM

Electropherogram Summary



Overall Results for Ladder

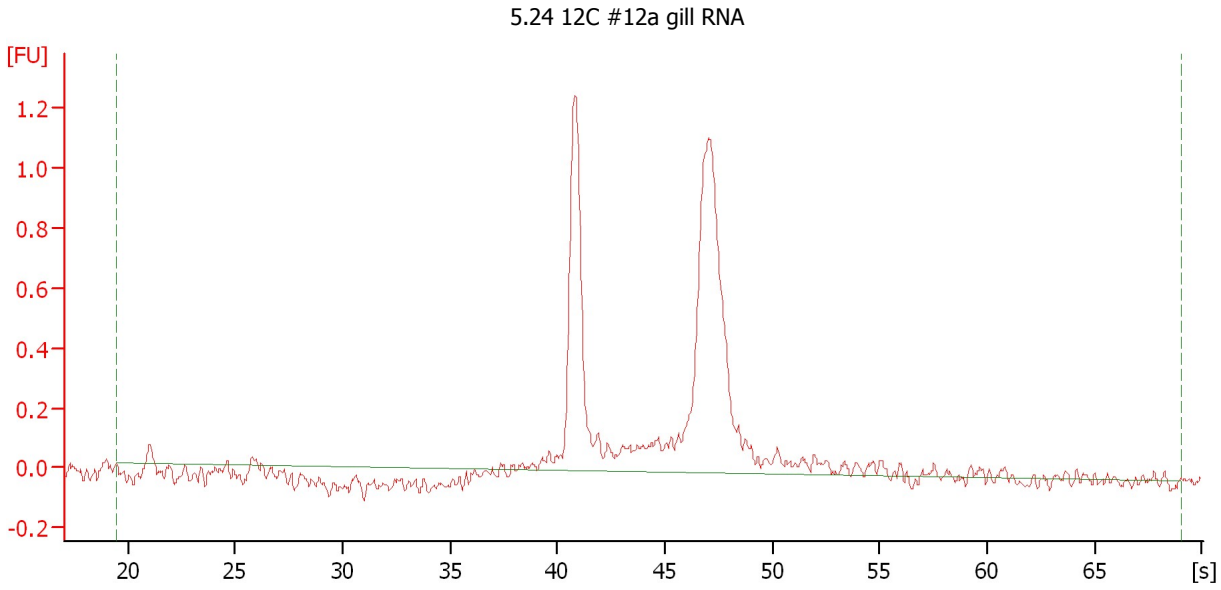
RNA Concentration: 150 ng/ μ l
Result Flagging Color:

Result Flagging Label: All Other Samples

Assay Class: Eukaryote Total RNA Nano
Data Path: C:\...ents and Settings\Bioanalyzer\2012-05-04\2012-05-04_001.xad

Created: 5/4/2012 9:13:57 AM
Modified: 5/4/2012 9:37:49 AM

Electropherogram Summary Continued ...



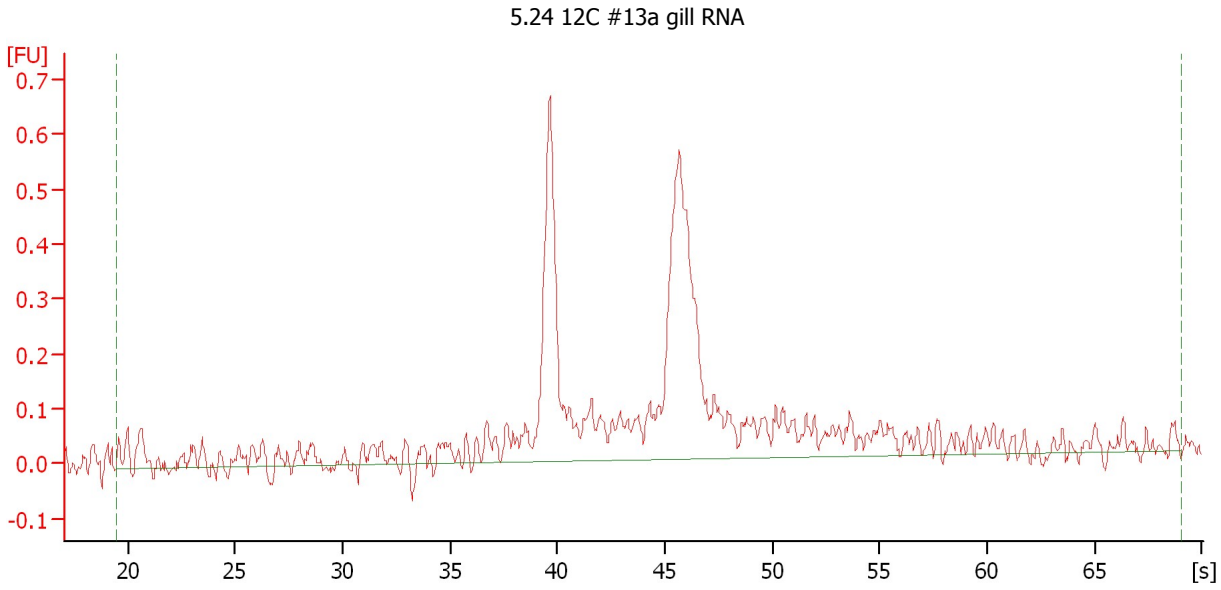
Overall Results for sample 1 : 5.24 12C #12a gill RNA

RNA Area:	6.6	RNA Integrity Number (RIN):	2.6 (B.02.08)
RNA Concentration:	810 ng/μl	Result Flagging Color:	
rRNA Ratio [28s / 18s]:	0.0	Result Flagging Label:	RIN: 2.60

Assay Class: Eukaryote Total RNA Nano
Data Path: C:\...ents and Settings\Bioanalyzer\2012-05-04\2012-05-04_001.xad

Created: 5/4/2012 9:13:57 AM
Modified: 5/4/2012 9:37:49 AM

Electropherogram Summary Continued ...



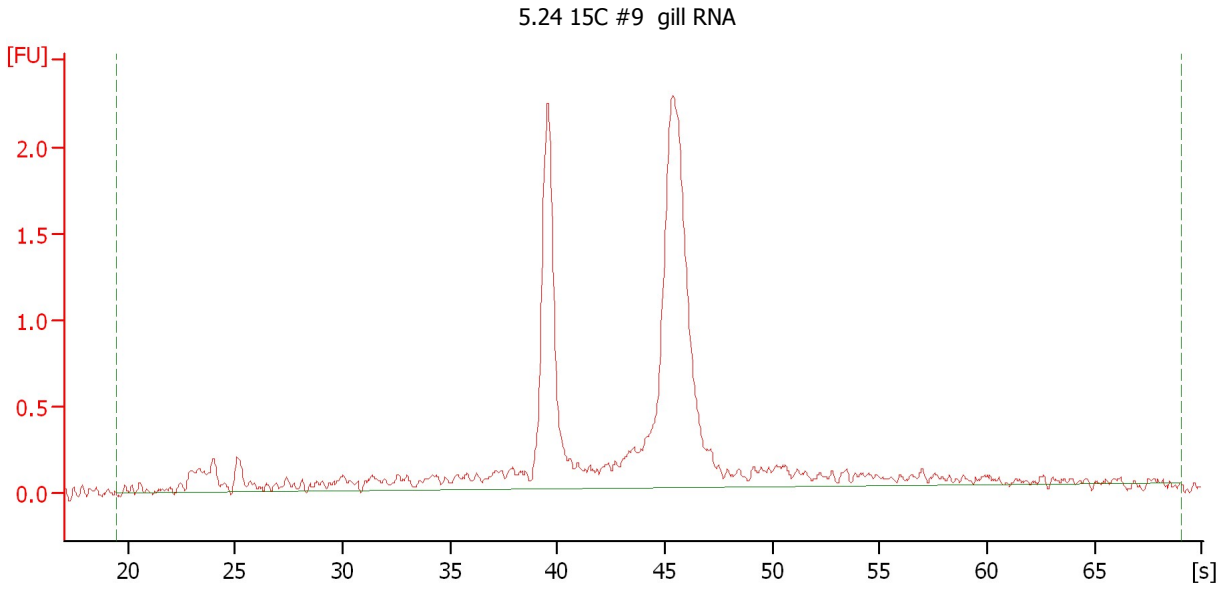
Overall Results for sample 2 : 5.24 12C #13a gill RNA

RNA Area:	6.0	RNA Integrity Number (RIN):	2.6 (B.02.08)
RNA Concentration:	735 ng/μl	Result Flagging Color:	
rRNA Ratio [28s / 18s]:	0.0	Result Flagging Label:	RIN: 2.60

Assay Class: Eukaryote Total RNA Nano
Data Path: C:\...ents and Settings\Bioanalyzer\2012-05-04\2012-05-04_001.xad

Created: 5/4/2012 9:13:57 AM
Modified: 5/4/2012 9:37:49 AM

Electropherogram Summary Continued ...



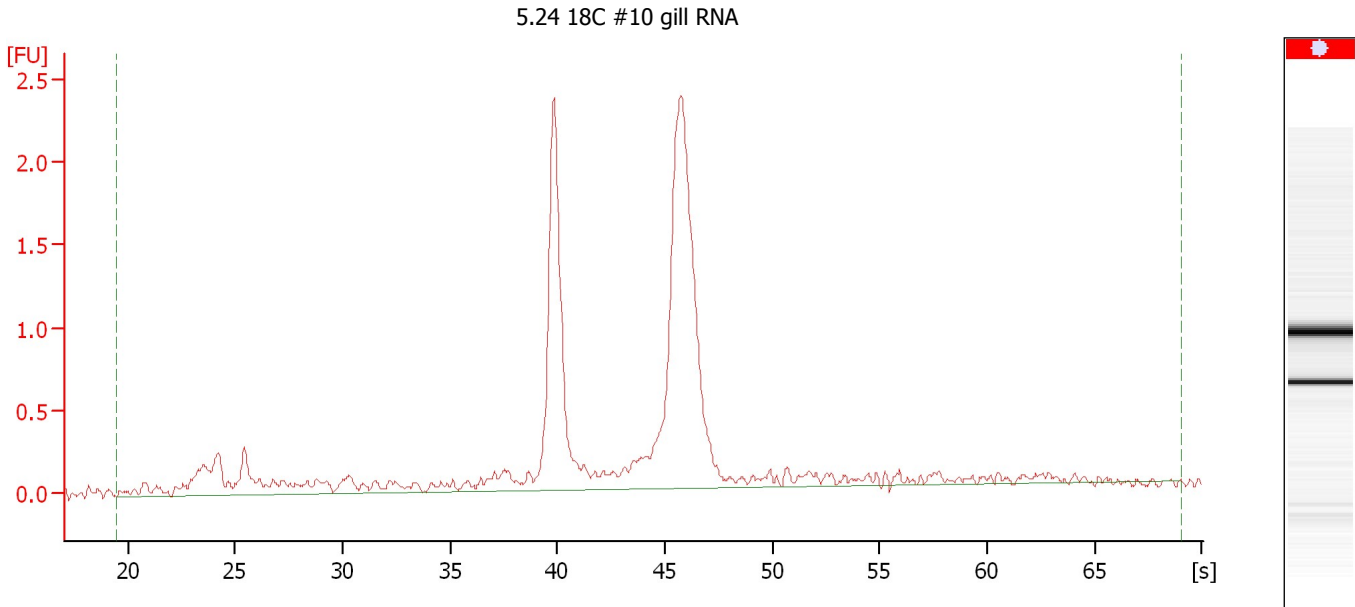
Overall Results for sample 3 : 5.24 15C #9 gill RNA

RNA Area:	16.6	RNA Integrity Number (RIN):	2.6 (B.02.08)
RNA Concentration:	2,041 ng/μl	Result Flagging Color:	
rRNA Ratio [28s / 18s]:	0.0	Result Flagging Label:	RIN: 2.60

Assay Class: Eukaryote Total RNA Nano
Data Path: C:\...ents and Settings\Bioanalyzer\2012-05-04\2012-05-04_001.xad

Created: 5/4/2012 9:13:57 AM
Modified: 5/4/2012 9:37:49 AM

Electropherogram Summary Continued ...



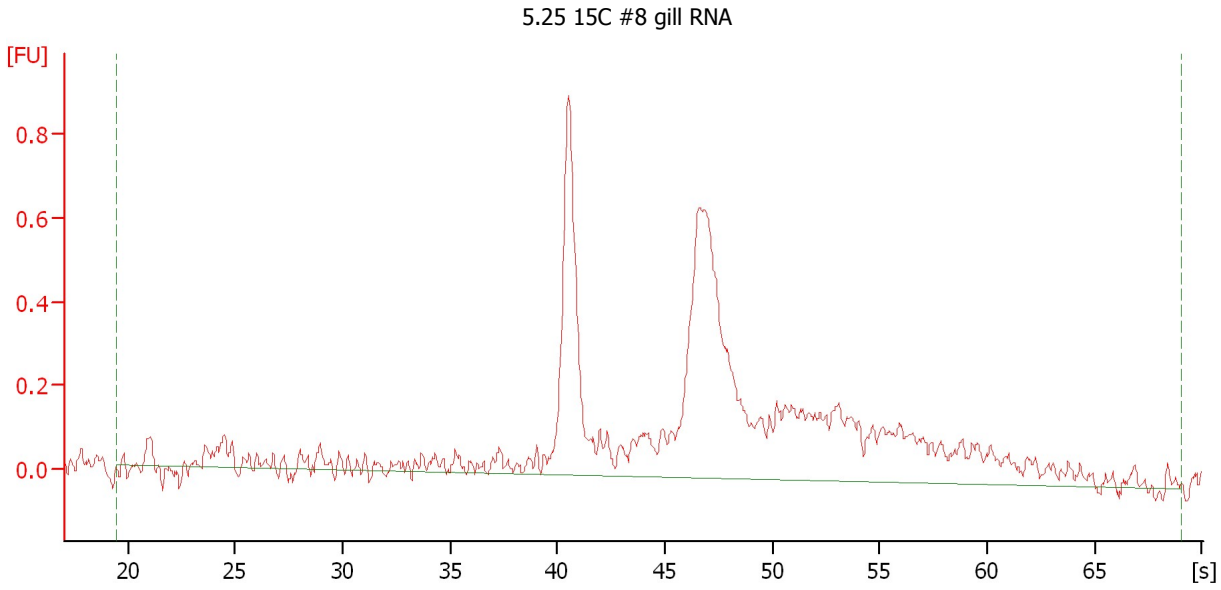
Overall Results for sample 4 : 5.24 18C #10 gill RNA

RNA Area:	17.8	RNA Integrity Number (RIN):	2.6 (B.02.08)
RNA Concentration:	2,182 ng/ μ l	Result Flagging Color:	
rRNA Ratio [28s / 18s]:	0.0	Result Flagging Label:	RIN: 2.60

Assay Class: Eukaryote Total RNA Nano
Data Path: C:\...ents and Settings\Bioanalyzer\2012-05-04\2012-05-04_001.xad

Created: 5/4/2012 9:13:57 AM
Modified: 5/4/2012 9:37:49 AM

Electropherogram Summary Continued ...



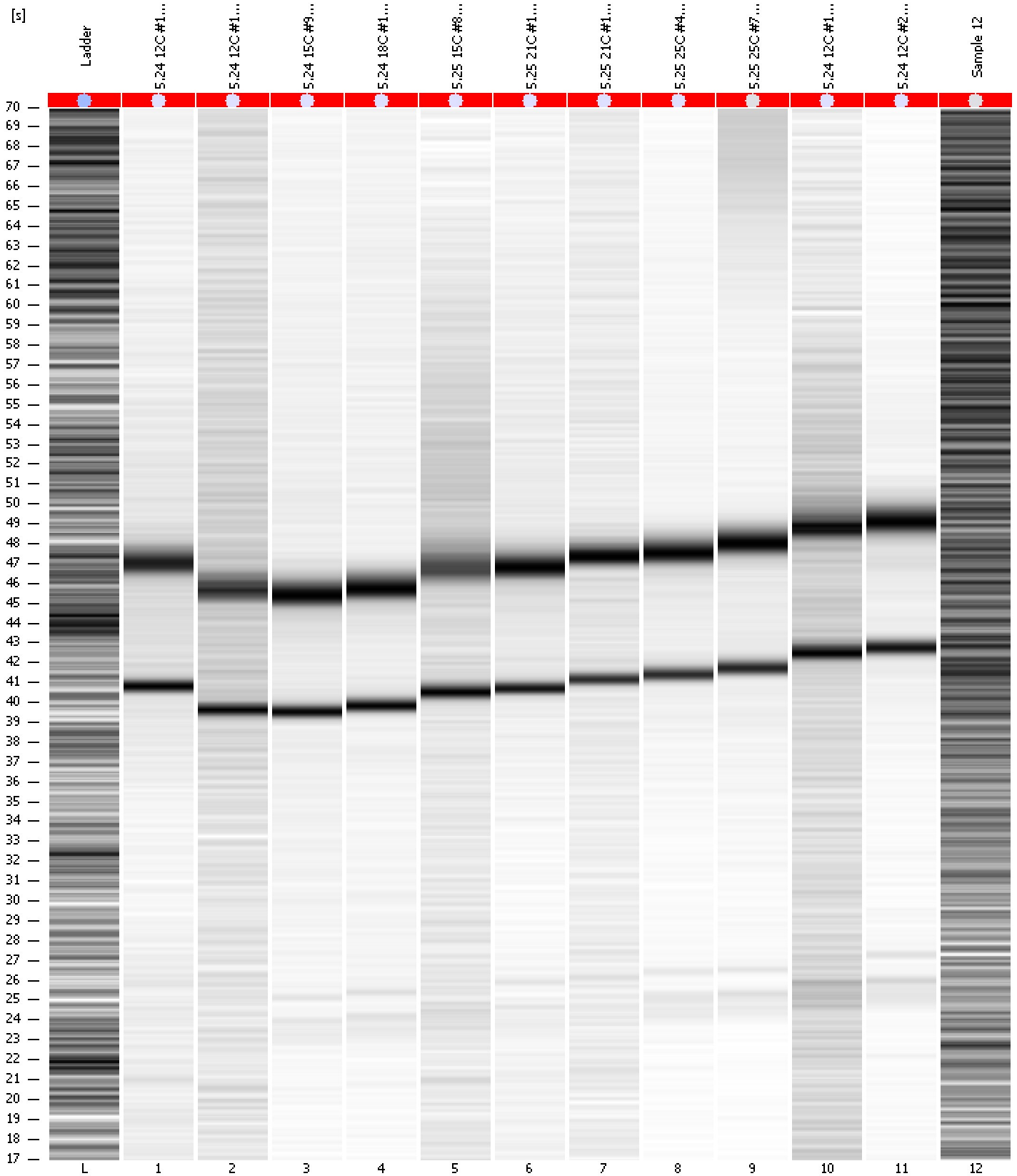
Overall Results for sample 5 : 5.25 15C #8 gill RNA

RNA Area:	9.2	RNA Integrity Number (RIN):	2.6 (B.02.08)
RNA Concentration:	1,123 ng/μl	Result Flagging Color:	
rRNA Ratio [28s / 18s]:	0.0	Result Flagging Label:	RIN: 2.60

Assay Class: Eukaryote Total RNA Nano
Data Path: C:\...ents and Settings\Bioanalyzer\2012-05-04\2012-05-04_001.xad

Created: 5/4/2012 9:13:57 AM
Modified: 5/4/2012 9:37:49 AM

Gel Image



Assay Class: Eukaryote Total RNA Nano Created: 5/4/2012 9:13:57 AM
 Data Path: C:\...ents and Settings\Bioanalyzer\2012-05-04\2012-05-04_001.xad Modified: 5/4/2012 9:37:49 AM

Run Logbook

Description	Number	Source	Category	Sub Category	Time	Time Zone	User	Host
Run ended on port 1 (Number of wells acquired: 13)		Instrument	Run		5/4/2012 9:37:45 AM	(GMT --07:00) Pacific Standard Time	UC Davis	D8XSMGH1
Run started on port 1 (File: C:\Documents and Settings\Bioanalyzer\2012-05-04\2012-05-04_001.xad)		Instrument	Run		5/4/2012 9:14:02 AM	(GMT --07:00) Pacific Standard Time	UC Davis	D8XSMGH1
Product Number : G2938B		Instrument	Run		5/4/2012 9:14:02 AM	(GMT --07:00) Pacific Standard Time	UC Davis	D8XSMGH1
Name :		Instrument	Run		5/4/2012 9:14:02 AM	(GMT --07:00) Pacific Standard Time	UC Davis	D8XSMGH1
Vendor : Agilent Technologies		Instrument	Run		5/4/2012 9:14:02 AM	(GMT --07:00) Pacific Standard Time	UC Davis	D8XSMGH1
Serial# : DE13701086		Instrument	Run		5/4/2012 9:14:02 AM	(GMT --07:00) Pacific Standard Time	UC Davis	D8XSMGH1
Firmware : C.01.069		Instrument	Run		5/4/2012 9:14:02 AM	(GMT --07:00) Pacific Standard Time	UC Davis	D8XSMGH1
Cartridge : Electrode		Instrument	Run		5/4/2012 9:14:02 AM	(GMT --07:00) Pacific Standard Time	UC Davis	D8XSMGH1