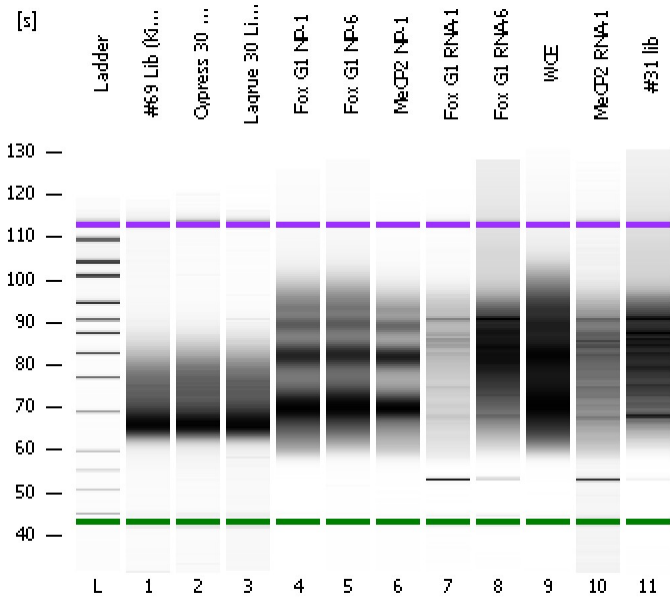


Assay Class: High Sensitivity DNA Assay
Data Path: C:\...ents and Settings\Bioanalyzer\2012-05-04\2012-05-04_003.xad

Created: 5/4/2012 10:58:50 AM
Modified: 5/4/2012 11:41:56 AM

Electrophoresis File Run Summary



Instrument Information:

Instrument Name: DE13701086 Firmware: C.01.069
Serial#: DE13701086 Type: G2938B

Assay Information:

Assay Origin Path: C:\Program Files\Agilent\2100 bioanalyzer\2100 expert\assays\dsDNA\High Sensitivity DNA.xsy
Assay Class: High Sensitivity DNA Assay
Version: 1.03
Assay Comments: Copyright © 2003-2010 Agilent Technologies

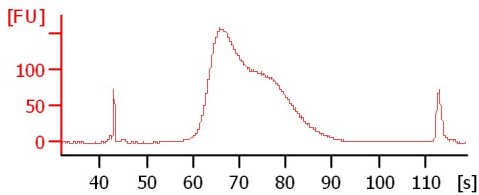
Chip Information:

Chip Lot #:
Reagent Kit Lot #:
Chip Comments:

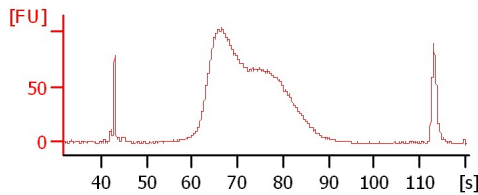
#69 Lib (Kim, H.) 5/3/12

Cypress 30 Lib (Lawson, N.) 5/3/12

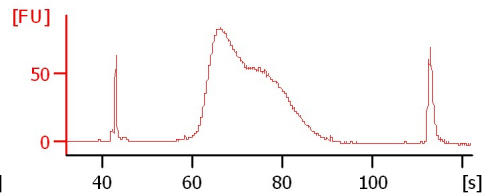
Lagrue 30 Lib (Lawson, N.) 5/3/12



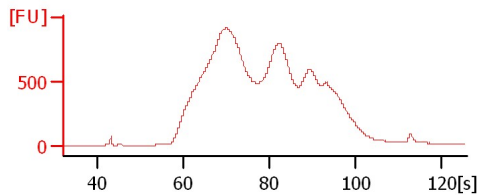
Fox G1 NP-1



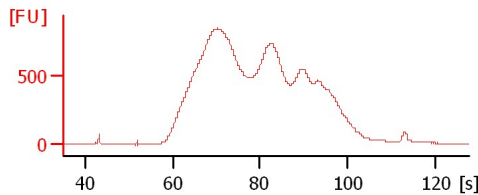
Fox G1 NP-6



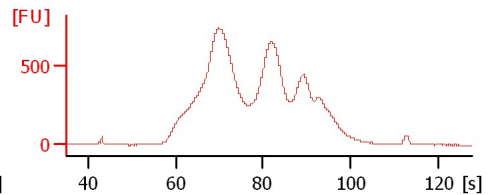
MeCP2 NP-1



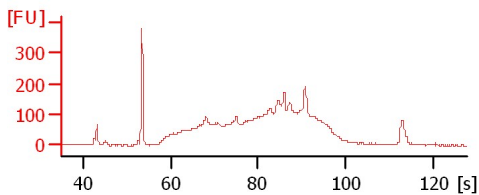
Fox G1 RNA-1



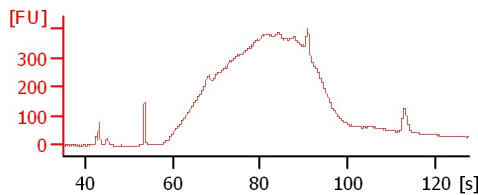
Fox G1 RNA-6



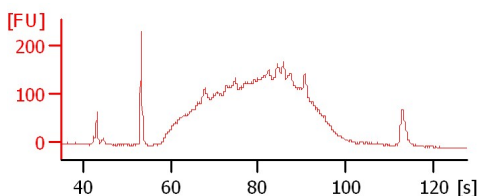
WCE



MeCP2 RNA-1



#31 lib



Assay Class: High Sensitivity DNA Assay
Data Path: C:\...ents and Settings\Bioanalyzer\2012-05-04\2012-05-04_003.xad

Created: 5/4/2012 10:58:50 AM
Modified: 5/4/2012 11:41:56 AM

Electrophoresis File Run Summary (Chip Summary)

Sample Name	Sample Comment	Rest. Digest	Status	Observation	Result Label	Result Color
#69 Lib (Kim, H.) 5/3/12		<input type="checkbox"/>	✓			
Cypress 30 Lib (Lawson, N.) 5/3/12		<input type="checkbox"/>	✓			
Lagrué 30 Lib (Lawson, N.) 5/3/12		<input type="checkbox"/>	✓			
Fox G1 NP-1		<input type="checkbox"/>	✓			
Fox G1 NP-6		<input type="checkbox"/>	✓			
MeCP2 NP-1		<input type="checkbox"/>	✓			
Fox G1 RNA-1		<input type="checkbox"/>	✓			
Fox G1 RNA-6		<input type="checkbox"/>	✓			
WCE		<input type="checkbox"/>	✓			
MeCP2 RNA-1		<input type="checkbox"/>	✓			
#31 lib		<input type="checkbox"/>	✓			
Ladder		<input type="checkbox"/>	✓			

Chip Lot #

Reagent Kit Lot #

Chip Comments :

Assay Class: High Sensitivity DNA Assay
Data Path: C:\...ents and Settings\Bioanalyzer\2012-05-04\2012-05-04_003.xad

Created: 5/4/2012 10:58:50 AM
Modified: 5/4/2012 11:41:56 AM

Electrophoresis Assay Details

General Analysis Settings

Number of Available Sample and Ladder Wells (Max.) : 12
Minimum Visible Range [s] : 32
Maximum Visible Range [s] : 138
Start Analysis Time Range [s] : 33
End Analysis Time Range [s] : 137.5
Ladder Concentration [pg/μl] : 1950
Uses Standard Area for Ladder Fragments
Lower Marker Concentration [pg/μl] : 125
Upper Marker Concentration [pg/μl] : 75
Used Upper Marker for Quantitation
Standard Curve Fit is Point to Point
Show Data Aligned to Lower and Upper Marker

Integrator Settings

Integration Start Time [s] : 33.05
Integration End Time [s] : 137
Slope Threshold : 0.8
Height Threshold [FU] : 20
Area Threshold : 0.1
Width Threshold [s] : 0.6
Baseline Plateau [s] : 0.5

Filter Settings

Filter Width [s] : 0.5
Polynomial Order : 4

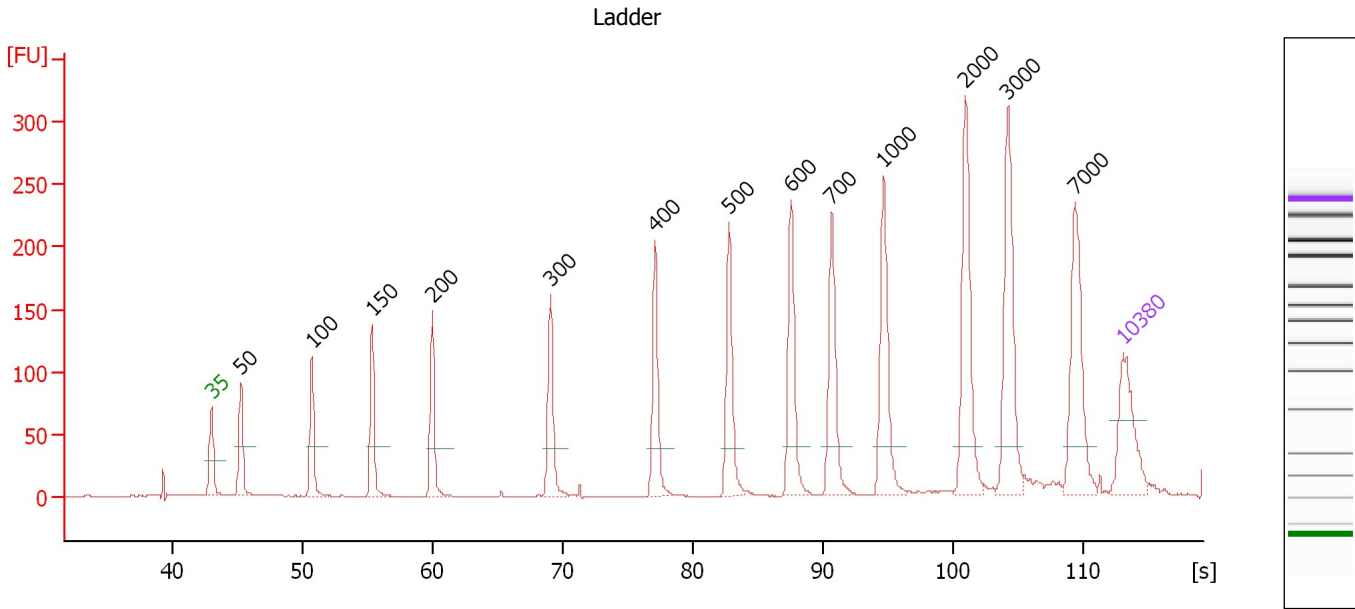
Ladder

Ladder Peak	Size	Area
1	35	160
2	50	210
3	100	208
4	150	221
5	200	242
6	300	270
7	400	305
8	500	306
9	600	336
10	700	321
11	1000	366
12	2000	413
13	3000	411
14	7000	400
15	10380	214

Assay Class: High Sensitivity DNA Assay
 Data Path: C:\...ents and Settings\Bioanalyzer\2012-05-04\2012-05-04_003.xad

Created: 5/4/2012 10:58:50 AM
 Modified: 5/4/2012 11:41:56 AM

Electropherogram Summary



Overall Results for Ladder

Noise: 0.2

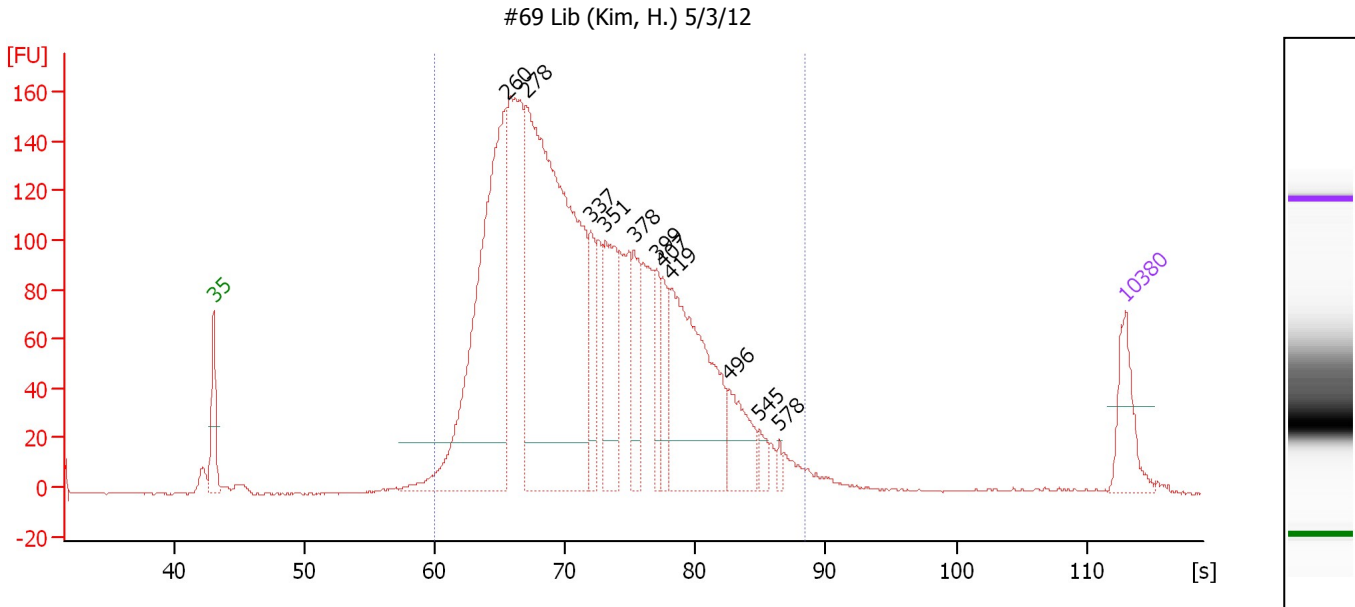
Peak table for Ladder

Peak	Size [bp]	Conc. [pg/μl]	Molarity [pmol/l]	Observations
1	35	125.00	5,411.3	Lower Marker
2	50	150.00	4,545.5	Ladder Peak
3	100	150.00	2,272.7	Ladder Peak
4	150	150.00	1,515.2	Ladder Peak
5	200	150.00	1,136.4	Ladder Peak
6	300	150.00	757.6	Ladder Peak
7	400	150.00	568.2	Ladder Peak
8	500	150.00	454.5	Ladder Peak
9	600	150.00	378.8	Ladder Peak
10	700	150.00	324.7	Ladder Peak
11	1,000	150.00	227.3	Ladder Peak
12	2,000	150.00	113.6	Ladder Peak
13	3,000	150.00	75.8	Ladder Peak
14	7,000	150.00	32.5	Ladder Peak
15	10,380	75.00	10.9	Upper Marker

Assay Class: High Sensitivity DNA Assay
 Data Path: C:\...ents and Settings\Bioanalyzer\2012-05-04\2012-05-04_003.xad

Created: 5/4/2012 10:58:50 AM
 Modified: 5/4/2012 11:41:56 AM

Electropherogram Summary Continued ...



Overall Results for sample 1 : #69 Lib (Kim, H.) 5/3/12

Number of peaks found: 11 Corr. Area 1: 3,422.6
 Noise: 0.2

Peak table for sample 1 : #69 Lib (Kim, H.) 5/3/12

Peak	Size [bp]	Conc. [pg/μl]	Molarity [pmol/l]	Observations
1	35	125.00	5,411.3	Lower Marker
2	260	904.97	5,267.5	
3	278	1,342.69	7,329.2	
4	337	120.26	541.2	
5	351	215.07	929.6	
6	378	125.95	505.2	
7	399	76.84	291.6	
8	407	83.93	312.5	
9	419	436.58	1,577.9	
10	496	113.73	347.4	
11	545	26.24	73.0	
12	578	12.17	31.9	
13	10,380	75.00	10.9	Upper Marker

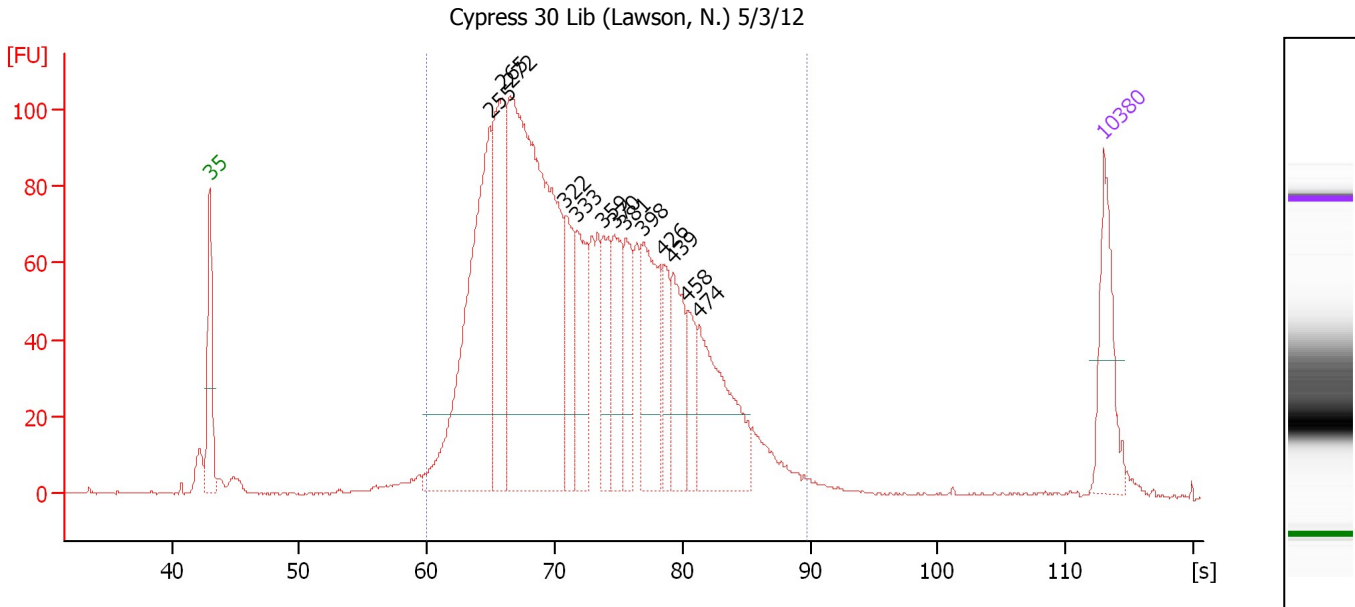
Region table for sample 1 : #69 Lib (Kim, H.) 5/3/12

From [s]	Molarity [pmol/l]	Average Size [bp]	Conc. [pg/μl]	To [s]	Corr. Area % of Total	Size distribution in CV [%]	Color
59.95	21,187.0	340	4,388.19	88.41	3,422.6	97	25.0

Assay Class: High Sensitivity DNA Assay
 Data Path: C:\...ents and Settings\Bioanalyzer\2012-05-04\2012-05-04_003.xad

Created: 5/4/2012 10:58:50 AM
 Modified: 5/4/2012 11:41:56 AM

Electropherogram Summary Continued ...



Overall Results for sample 2 : Cypress 30 Lib (Lawson, N.) 5/3/12

Number of peaks found: 13 Corr. Area 1: 2,316.6
 Noise: 0.3

Peak table for sample 2 : Cypress 30 Lib (Lawson, N.) 5/3/12

Peak	Size [bp]	Conc. [pg/μl]	Molarity [pmol/l]	Observations
1	35	125.00	5,411.3	Lower Marker
2	255	452.67	2,694.4	
3	265	237.72	1,358.1	
4	272	818.22	4,555.2	
5	322	101.24	475.8	
6	333	117.48	533.9	
7	359	87.35	368.7	
8	370	93.69	383.7	
9	381	81.18	322.8	
10	398	152.15	578.9	
11	426	53.76	191.4	
12	439	93.39	322.4	
13	458	52.27	172.9	
14	474	175.38	561.1	
15	10,380	75.00	10.9	Upper Marker

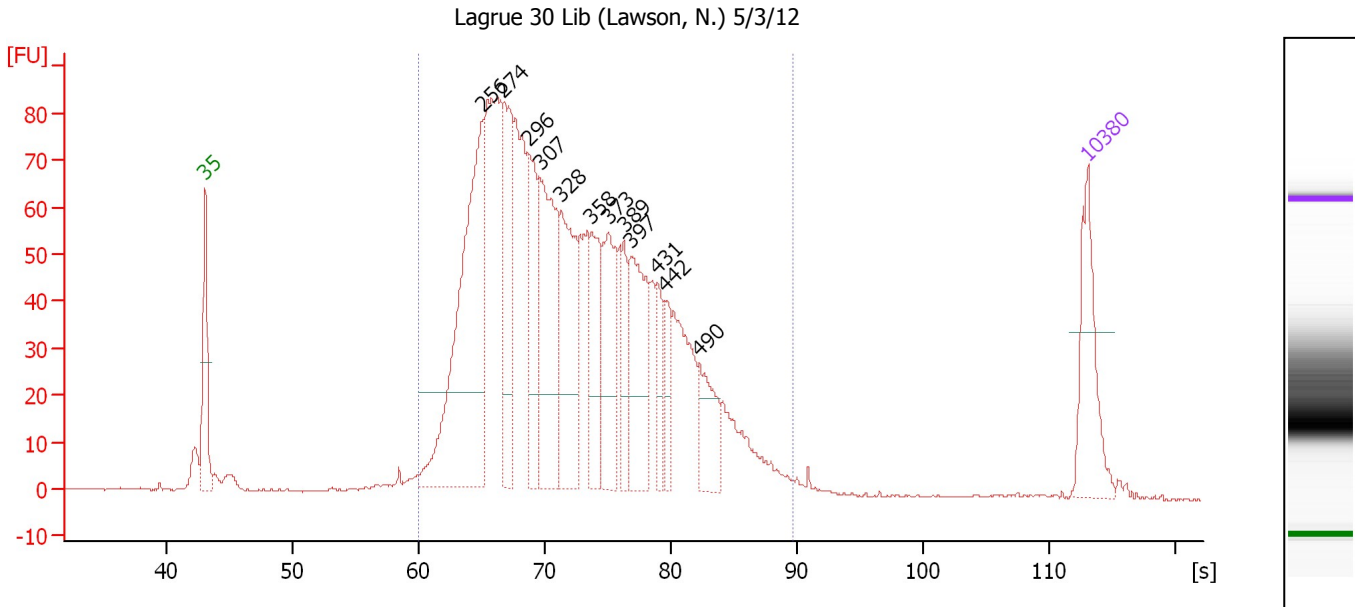
Region table for sample 2 : Cypress 30 Lib (Lawson, N.) 5/3/12

From [s]	Molarity [pmol/l]	Average Size [bp]	Conc. [pg/μl]	To [s]	Corr. Area	% of Total	Size distribution in CV [%]	Color
59.95	13,195.9	348	2,773.79	89.77	2,316.6	95	25.9	Blue

Assay Class: High Sensitivity DNA Assay
 Data Path: C:\...ents and Settings\Bioanalyzer\2012-05-04\2012-05-04_003.xad

Created: 5/4/2012 10:58:50 AM
 Modified: 5/4/2012 11:41:56 AM

Electropherogram Summary Continued ...



Overall Results for sample 3 : Lagrue 30 Lib (Lawson, N.) 5/3/12

Number of peaks found: 12 Corr. Area 1: 1,857.7
 Noise: 0.2

Peak table for sample 3 : Lagrue 30 Lib (Lawson, N.) 5/3/12

Peak	Size [bp]	Conc. [pg/μl]	Molarity [pmol/l]	Observations
1	35	125.00	5,411.3	Lower Marker
2	256	408.50	2,415.6	
3	274	167.63	928.4	
4	296	122.74	629.1	
5	307	208.75	1,031.2	
6	328	163.63	756.1	
7	358	90.72	384.4	
8	373	118.59	481.2	
9	389	53.07	206.6	
10	397	135.25	516.5	
11	431	39.34	138.2	
12	442	39.05	133.7	
13	490	65.60	203.0	
14	10,380	75.00	10.9	Upper Marker

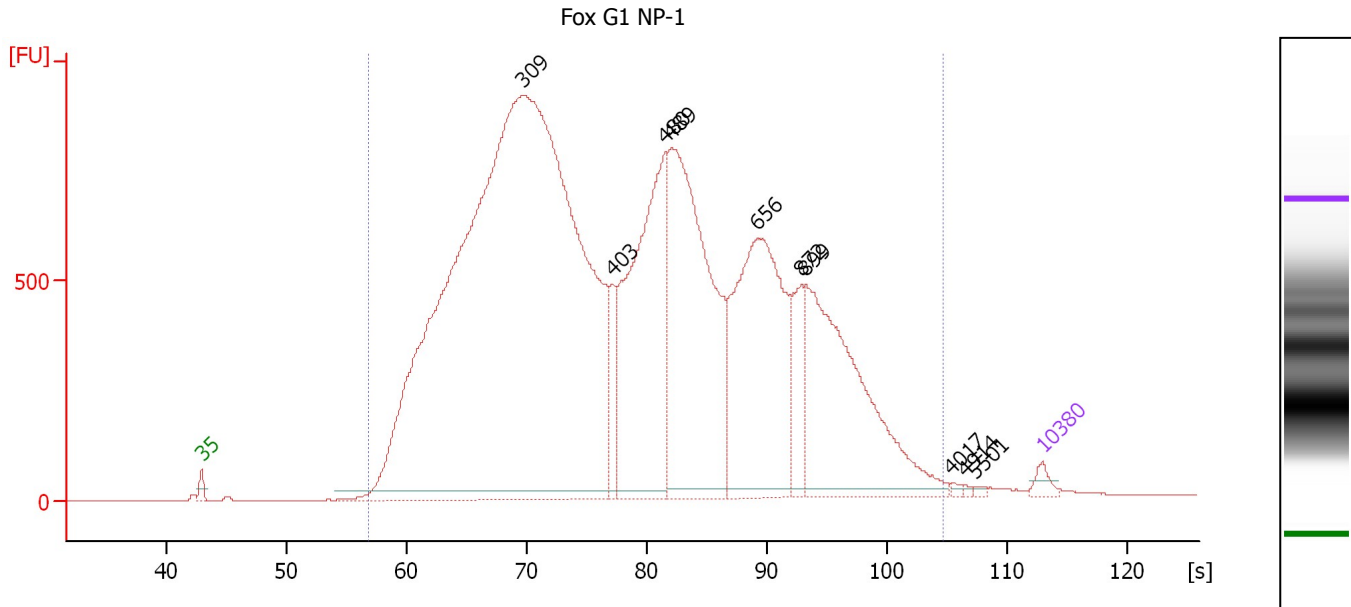
Region table for sample 3 : Lagrue 30 Lib (Lawson, N.) 5/3/12

From [s]	Molarity [pmol/l]	Average Size [bp]	Conc. [pg/μl]	To [s]	Corr. Area % of Total	Size distribution in CV [%]	Color	
59.95	12,068.2	345	2,526.10	89.54	1,857.7	96	25.6	■

Assay Class: High Sensitivity DNA Assay
 Data Path: C:\...ents and Settings\Bioanalyzer\2012-05-04\2012-05-04_003.xad

Created: 5/4/2012 10:58:50 AM
 Modified: 5/4/2012 11:41:56 AM

Electropherogram Summary Continued ...



Overall Results for sample 4 : Fox G1 NP-1

Number of peaks found: 10 Corr. Area 1: 31,439.0
 Noise: 0.3

Peak table for sample 4 : Fox G1 NP-1

Peak	Size [bp]	Conc. [pg/μl]	Molarity [pmol/l]	Observations
1	35	125.00	5,411.3	Lower Marker
2	309	20,542.38	100,825.3	
3	403	475.68	1,788.3	
4	480	3,562.61	11,255.3	
5	489	4,277.79	13,255.6	
6	656	3,261.90	7,538.3	
7	872	582.34	1,011.3	
8	899	2,835.13	4,777.6	
9	4,017	22.00	8.3	
10	4,914	16.43	5.1	
11	5,501	18.88	5.2	
12	10,380	75.00	10.9	Upper Marker

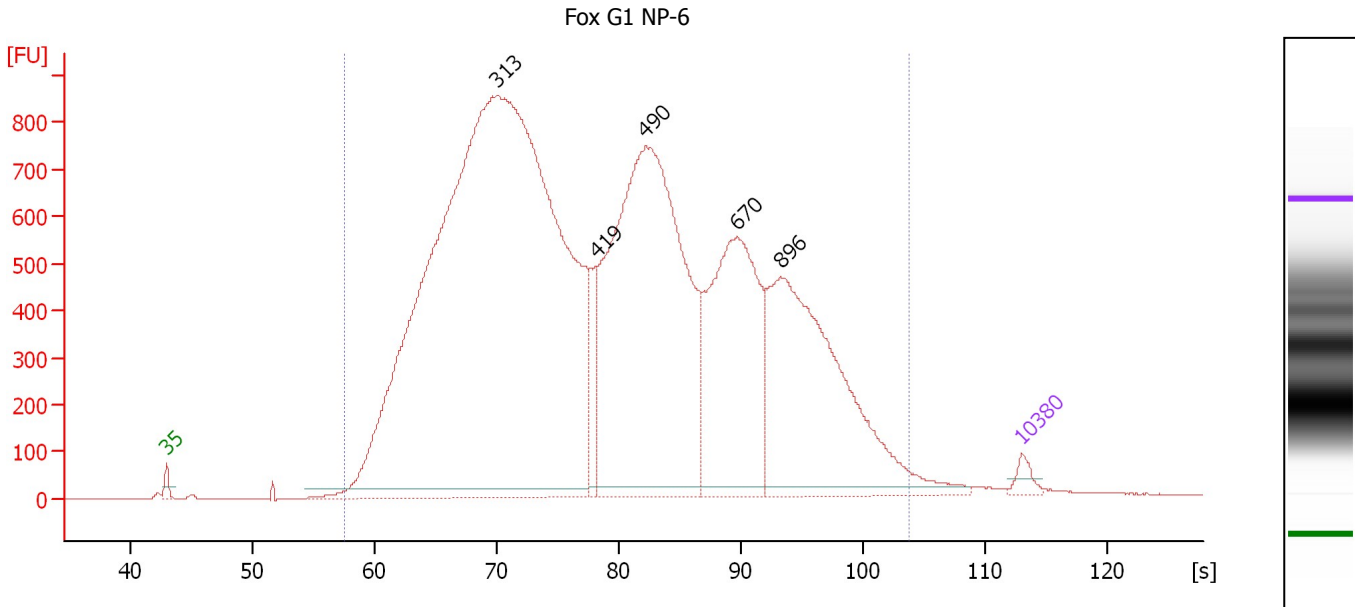
Region table for sample 4 : Fox G1 NP-1

From [s]	Molarity [pmol/l]	Average Size [bp]	Conc. [pg/μl]	To [s]	Corr. Area	% of Total	Size distribution in CV [%]	Color
56.97	148,812.5	530	35,643.89	104.71	31,439.0	99	71.5	■

Assay Class: High Sensitivity DNA Assay
 Data Path: C:\...ents and Settings\Bioanalyzer\2012-05-04\2012-05-04_003.xad

Created: 5/4/2012 10:58:50 AM
 Modified: 5/4/2012 11:41:56 AM

Electropherogram Summary Continued ...



Overall Results for sample 5 : Fox G1 NP-6

Number of peaks found: 5 Corr. Area 1: 29,135.7
 Noise: 0.8

Peak table for sample 5 : Fox G1 NP-6

Peak	Size [bp]	Conc. [pg/μl]	Molarity [pmol/l]	Observations
1	35	125.00	5,411.3	Lower Marker
2	313	15,742.26	76,259.1	
3	419	424.56	1,536.4	
4	490	5,819.52	17,977.6	
5	670	2,488.99	5,626.1	
6	896	2,954.80	4,998.3	
7	10,380	75.00	10.9	Upper Marker

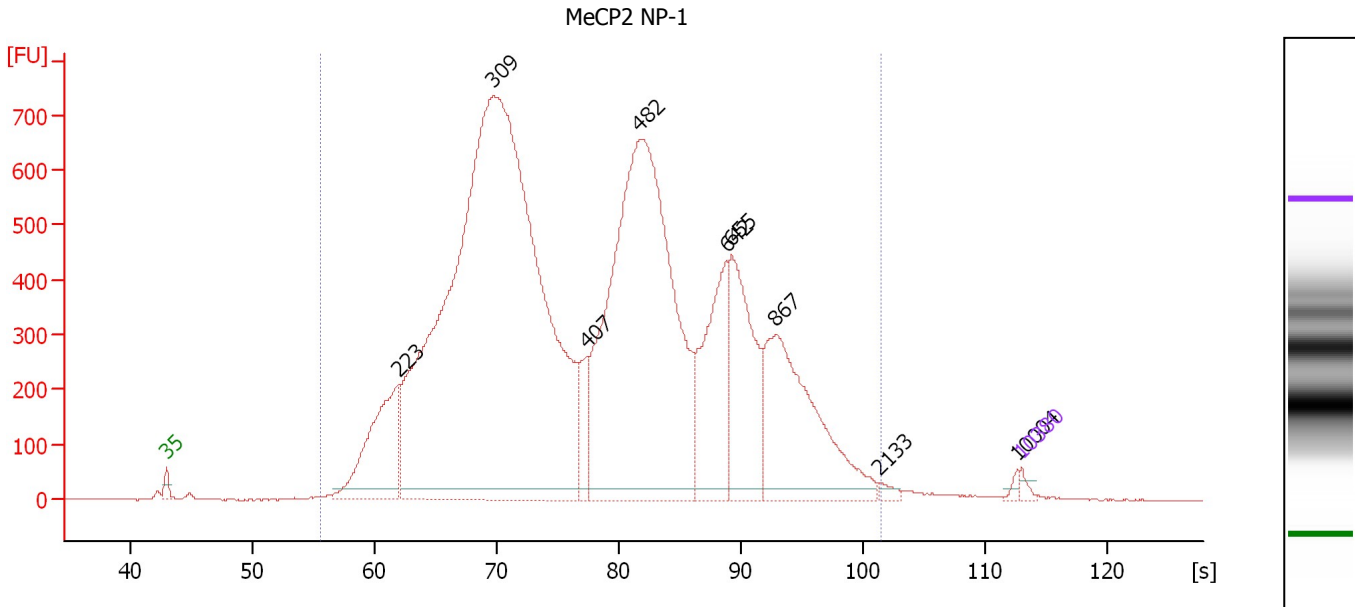
Region table for sample 5 : Fox G1 NP-6

From [s]	Molarity [pmol/l]	Average Size [bp]	Conc. [pg/μl]	To [s]	Corr. Area	% of Total	Size distribution in CV [%]	Color
57.61	109,669.3	543	27,177.47	103.71	29,135.7	99	70.0	Blue

Assay Class: High Sensitivity DNA Assay
 Data Path: C:\...ents and Settings\Bioanalyzer\2012-05-04\2012-05-04_003.xad

Created: 5/4/2012 10:58:50 AM
 Modified: 5/4/2012 11:41:56 AM

Electropherogram Summary Continued ...



Overall Results for sample 6 : MeCP2 NP-1

Number of peaks found: 9 Corr. Area 1: 19,951.1
 Noise: 1.3

Peak table for sample 6 : MeCP2 NP-1

Peak	Size [bp]	Conc. [pg/μl]	Molarity [pmol/l]	Observations
1	35	125.00	5,411.3	Lower Marker
2	223	2,976.42	20,267.6	
3	309	27,115.28	132,975.7	
4	407	703.58	2,620.8	
5	482	12,539.30	39,448.5	
6	642	2,542.76	5,997.8	
7	655	2,745.99	6,348.5	
8	867	3,673.40	6,419.4	
9	2,133	85.68	60.9	
10	10,004	62.54	9.5	
11	10,380	75.00	10.9	Upper Marker

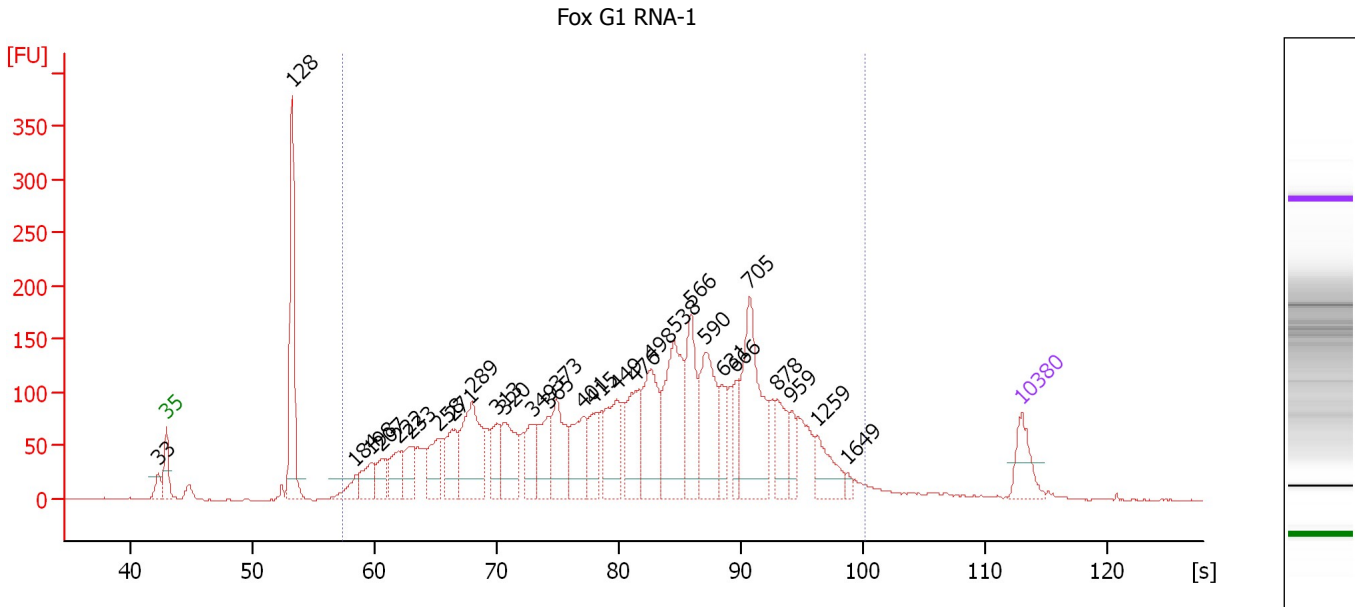
Region table for sample 6 : MeCP2 NP-1

From [s]	Molarity [pmol/l]	Average Size [bp]	Conc. [pg/μl]	To [s]	Corr. Area	% of Total	Size distribution in CV [%]	Color
55.64	217,435.5	484	52,190.57	101.48	19,951.1	99	56.2	Blue

Assay Class: High Sensitivity DNA Assay
 Data Path: C:\...ents and Settings\Bioanalyzer\2012-05-04\2012-05-04_003.xad

Created: 5/4/2012 10:58:50 AM
 Modified: 5/4/2012 11:41:56 AM

Electropherogram Summary Continued ...



Overall Results for sample 7 : Fox G1 RNA-1

Number of peaks found: 30 Corr. Area 1: 4,301.3
 Noise: 0.8

Peak table for sample 7 : Fox G1 RNA-1

Peak	Size [bp]	Conc. [pg/μl]	Molarity [pmol/l]	Observations
1	33	0.00	0.0	
2	35	125.00	5,411.3	Lower Marker
3	128	482.83	5,732.7	
4	184	55.46	457.0	
5	198	97.78	749.7	
6	207	82.36	602.8	
7	222	103.73	706.5	
8	233	110.33	716.2	
9	258	123.91	726.7	
10	271	147.78	826.9	
11	289	297.41	1,560.6	
12	313	102.93	498.9	
13	320	174.97	828.7	
14	349	103.68	450.7	
15	365	132.73	550.3	
16	373	176.91	718.0	
17	401	155.25	586.3	
18	415	95.93	350.5	
19	449	178.89	603.8	
20	476	172.78	550.1	
21	498	238.05	724.1	
22	538	303.23	854.3	
23	566	201.62	539.3	
24	590	236.30	606.6	
25	631	76.05	182.5	
26	666	73.79	167.9	

Assay Class: High Sensitivity DNA Assay
 Data Path: C:\...ents and Settings\Bioanalyzer\2012-05-04\2012-05-04_003.xad


Created: 5/4/2012 10:58:50 AM
 Modified: 5/4/2012 11:41:56 AM

Electropherogram Summary Continued ...

... Peak table for sample 7 : Fox G1 RNA-1

Peak	Size [bp]	Conc. [pg/μl]	Molarity [pmol/l]	Observations
27	705	351.61	755.9	
28	878	98.25	169.6	
29	959	56.93	89.9	
30	1,259	94.21	113.4	
31	1,649	11.95	11.0	
32	10,380	75.00	10.9	Upper Marker

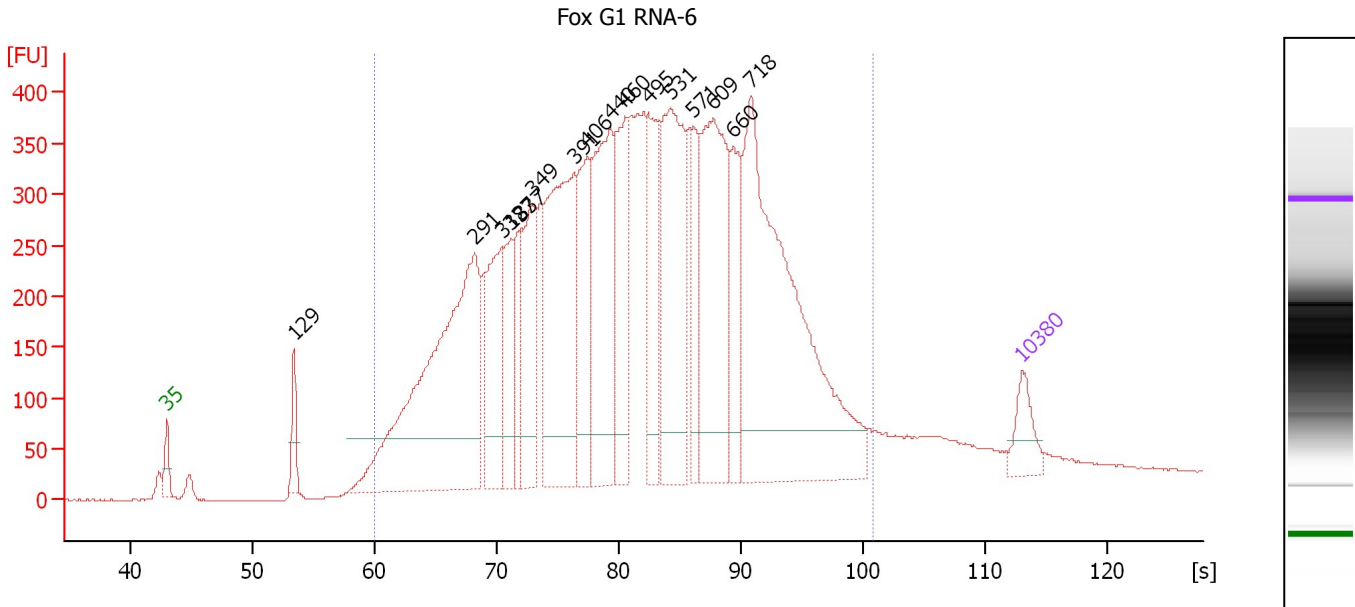
Region table for sample 7 : Fox G1 RNA-1

From [s]	Molarity [pmol/l]	Average Size [bp]	Conc. [pg/μl]	To [s]	Corr. Area	% of Total	Size distribution in CV [%]	Color
57.35	17,371.1	550	4,570.85	100.17	4,301.3	90	51.9	

Assay Class: High Sensitivity DNA Assay
 Data Path: C:\...ents and Settings\Bioanalyzer\2012-05-04\2012-05-04_003.xad

Created: 5/4/2012 10:58:50 AM
 Modified: 5/4/2012 11:41:56 AM

Electropherogram Summary Continued ...



Setpoint Deviations for sample 8 : Fox G1 RNA-6

Height Threshold [FU] : 50

Overall Results for sample 8 : Fox G1 RNA-6

Number of peaks found: 16 Corr. Area 1: 12,490.1
 Noise: 0.7

Peak table for sample 8 : Fox G1 RNA-6

Peak	Size [bp]	Conc. [pg/μl]	Molarity [pmol/l]	Observations
1	35	125.00	5,411.3	Lower Marker
2	129	104.38	1,223.0	
3	291	1,379.08	7,179.7	
4	318	381.79	1,821.3	
5	327	229.86	1,066.1	
6	337	158.94	714.9	
7	349	355.20	1,543.2	
8	391	750.91	2,908.6	
9	406	359.69	1,342.6	
10	440	564.44	1,942.4	
11	460	370.37	1,219.2	
12	495	338.97	1,038.3	
13	531	629.13	1,795.1	
14	571	182.61	484.3	
15	609	627.68	1,562.0	
16	660	230.88	530.3	
17	718	1,317.83	2,781.7	
18	10,380	75.00	10.9	Upper Marker

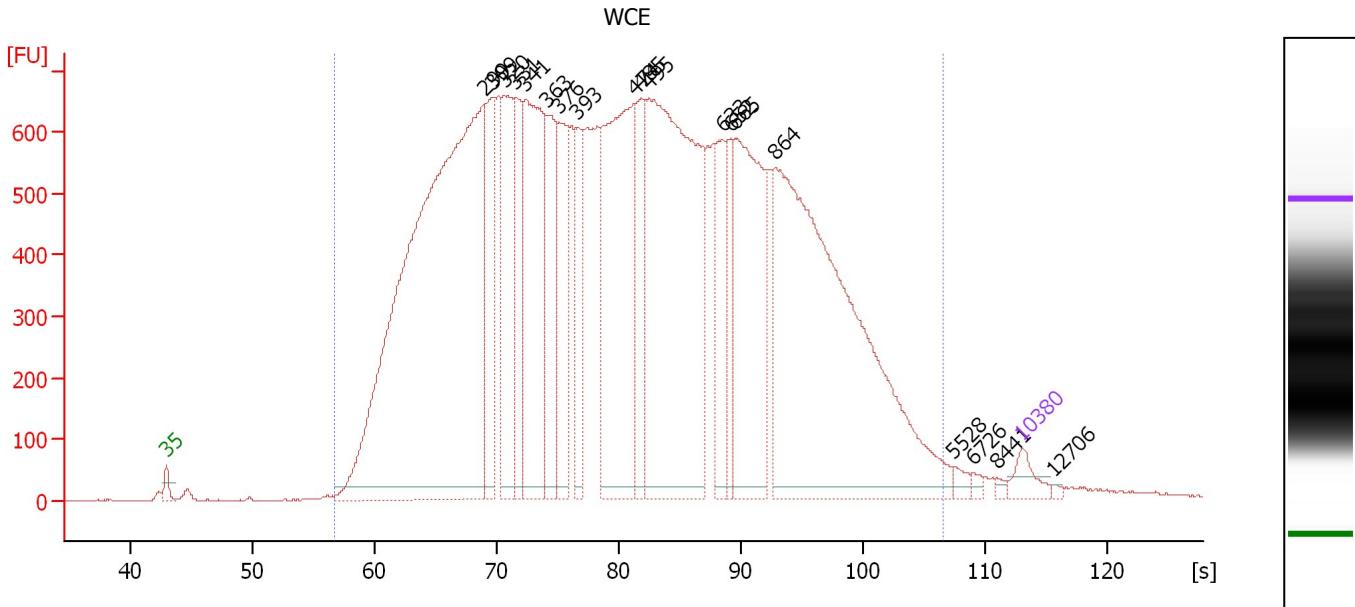
Region table for sample 8 : Fox G1 RNA-6

From [s]	Molarity [pmol/l]	Average Size [bp]	Conc. [pg/μl]	To [s]	Corr. Area	% of Total	Size distribution in CV [%]	Color
59.95	31,414.6	541	8,680.49	100.79	12,490.1	95	51.2	Blue

Assay Class: High Sensitivity DNA Assay
 Data Path: C:\...ents and Settings\Bioanalyzer\2012-05-04\2012-05-04_003.xad

Created: 5/4/2012 10:58:50 AM
 Modified: 5/4/2012 11:41:56 AM

Electropherogram Summary Continued ...



Overall Results for sample 9 : WCE

Number of peaks found: 19 Corr. Area 1: 29,626.3
 Noise: 1.5

Peak table for sample 9 : WCE

Peak	Size [bp]	Conc. [pg/μl]	Molarity [pmol/l]	Observations
1	35	125.00	5,411.3	Lower Marker
2	299	5,717.63	28,939.6	
3	309	566.73	2,782.7	
4	320	815.79	3,867.2	
5	331	502.68	2,303.2	
6	341	1,342.06	5,970.7	
7	363	665.76	2,776.9	
8	376	575.46	2,318.6	
9	393	403.25	1,555.0	
10	474	1,686.92	5,394.0	
11	485	514.20	1,607.9	
12	495	2,775.01	8,490.3	
13	633	415.58	995.4	
14	652	285.97	664.6	
15	665	1,245.74	2,836.7	
16	864	3,060.64	5,366.0	
17	5,528	36.90	10.1	
18	6,726	22.08	5.0	
19	8,441	16.00	2.9	
20	10,380	75.00	10.9	Upper Marker
21	12,706	0.00	0.0	

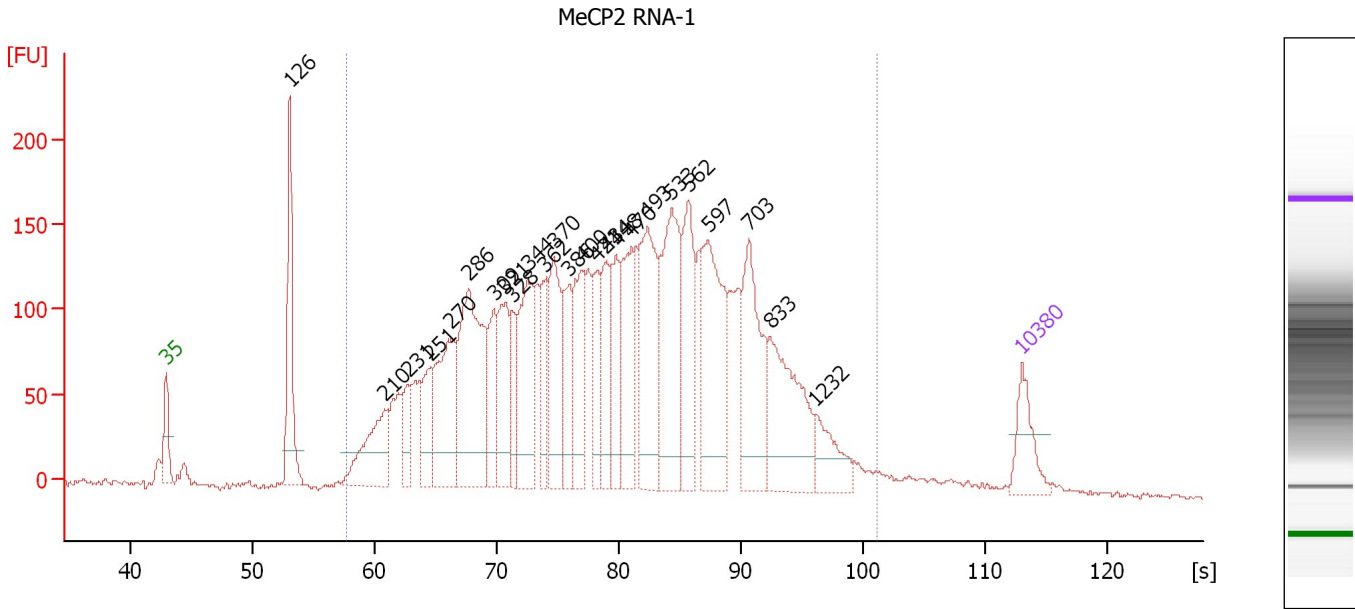
Region table for sample 9 : WCE

From [s]	Molarity [pmol/l]	Average Size [bp]	Conc. [pg/μl]	To [s]	Corr. Area	% of Total	Size distribution in CV [%]	Color
56.78	89,105.4	630	22,861.18	106.50	29,626.3	99	86.3	Blue

Assay Class: High Sensitivity DNA Assay
 Data Path: C:\...ents and Settings\Bioanalyzer\2012-05-04\2012-05-04_003.xad

Created: 5/4/2012 10:58:50 AM
 Modified: 5/4/2012 11:41:56 AM

Electropherogram Summary Continued ...



Overall Results for sample 10 : MeCP2 RNA-1

Number of peaks found: 25 Corr. Area 1: 5,321.3
 Noise: 1.5

Peak table for sample 10 : MeCP2 RNA-1

Peak	Size [bp]	Conc. [pg/μl]	Molarity [pmol/l]	Observations
1	35	125.00	5,411.3	Lower Marker
2	126	299.71	3,607.4	
3	210	208.74	1,505.6	
4	231	82.78	543.4	
5	251	115.33	696.0	
6	270	293.66	1,646.1	
7	286	459.29	2,433.2	
8	309	140.76	689.5	
9	321	185.56	875.0	
10	328	100.48	463.9	
11	344	247.95	1,091.6	
12	362	110.03	460.7	
13	370	222.34	909.4	
14	386	131.44	515.4	
15	400	182.37	691.6	
16	421	127.43	458.4	
17	434	130.32	454.9	
18	448	123.72	418.6	
19	470	207.36	667.9	
20	493	310.87	955.5	
21	533	348.13	989.3	
22	562	209.07	563.4	
23	597	317.03	804.5	
24	703	275.83	594.8	
25	833	272.72	495.8	
26	1,232	84.26	103.6	


Assay Class: High Sensitivity DNA Assay
Data Path: C:\...ents and Settings\Bioanalyzer\2012-05-04\2012-05-04_003.xad

Created: 5/4/2012 10:58:50 AM
Modified: 5/4/2012 11:41:56 AM

Electropherogram Summary Continued ...**... Peak table for sample 10 : MeCP2 RNA-1**

Peak	Size [bp]	Conc. [pg/μl]	Molarity [pmol/l]	Observations
27	10,380	75.00	10.9	Upper Marker

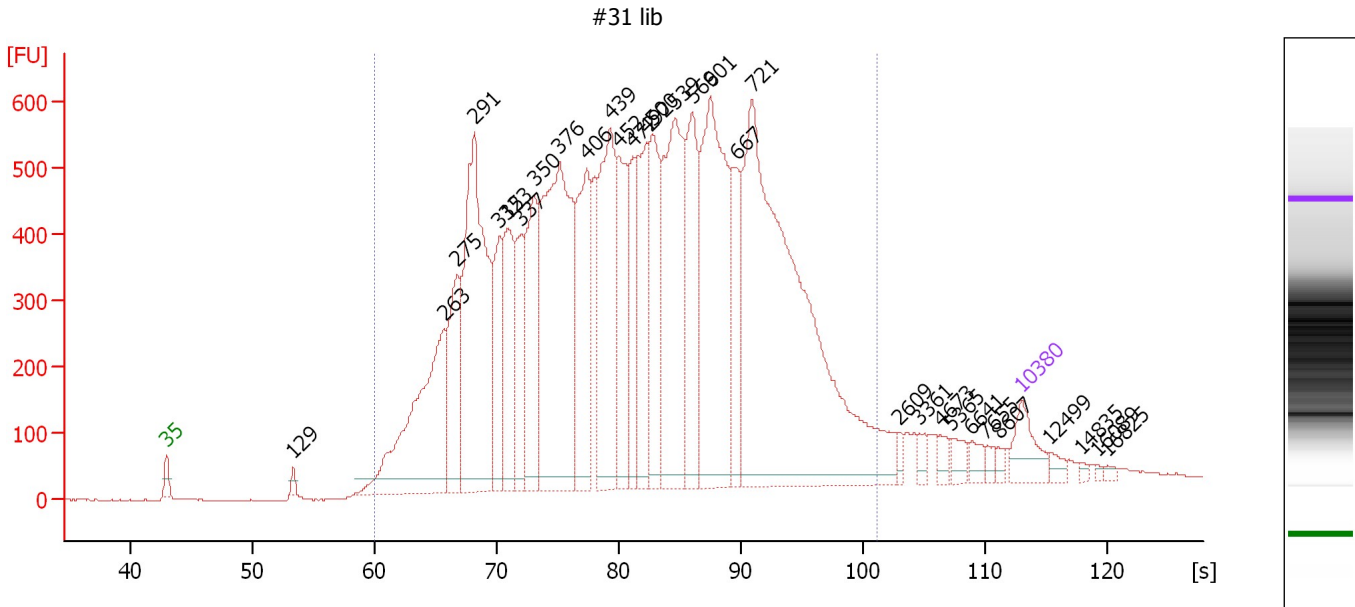
Region table for sample 10 : MeCP2 RNA-1

From [s]	Molarity [pmol/l]	Average Size [bp]	Conc. [pg/μl]	To [s]	Corr. Area	% of Total	Size distribution in CV [%]	Color
57.75	22,017.9	512	5,649.93	101.11	5,321.3	94	52.2	

Assay Class: High Sensitivity DNA Assay
 Data Path: C:\...ents and Settings\Bioanalyzer\2012-05-04\2012-05-04_003.xad

Created: 5/4/2012 10:58:50 AM
 Modified: 5/4/2012 11:41:56 AM

Electropherogram Summary Continued ...



Overall Results for sample 11 : #31 lib

Number of peaks found: 31 Corr. Area 1: 19,005.1
 Noise: 1.4

Peak table for sample 11 : #31 lib


Peak	Size [bp]	Conc. [pg/μl]	Molarity [pmol/l]	Observations
1	35	125.00	5,411.3	Lower Marker
2	129	19.60	230.4	
3	263	671.96	3,867.8	
4	275	300.54	1,655.0	
5	291	873.06	4,542.9	
6	315	230.47	1,108.0	
7	323	307.27	1,439.8	
8	337	213.90	960.7	
9	350	354.32	1,532.9	
10	376	926.51	3,728.6	
11	406	386.62	1,444.3	
12	439	504.96	1,741.2	
13	452	286.83	961.9	
14	472	184.33	591.2	
15	492	315.69	971.7	
16	500	318.89	967.0	
17	539	583.54	1,639.7	
18	569	326.46	869.4	
19	601	698.58	1,761.4	
20	667	209.69	476.4	
21	721	1,658.07	3,485.6	
22	2,609	16.96	9.8	
23	3,361	21.07	9.5	
24	4,673	23.51	7.6	
25	5,365	32.33	9.1	
26	6,641	27.13	6.2	

Assay Class: High Sensitivity DNA Assay
 Data Path: C:\...ents and Settings\Bioanalyzer\2012-05-04\2012-05-04_003.xad


Created: 5/4/2012 10:58:50 AM
 Modified: 5/4/2012 11:41:56 AM

Electropherogram Summary Continued ...

... Peak table for sample 11 : #31 lib

Peak	Size [bp]	Conc. [pg/μl]	Molarity [pmol/l]	Observations
27	7,655	15.65	3.1	
28	8,607	13.05	2.3	
29	 10,380	75.00	10.9	Upper Marker
30	12,499	0.00	0.0	
31	14,835	0.00	0.0	
32	16,089	0.00	0.0	
33	16,825	0.00	0.0	

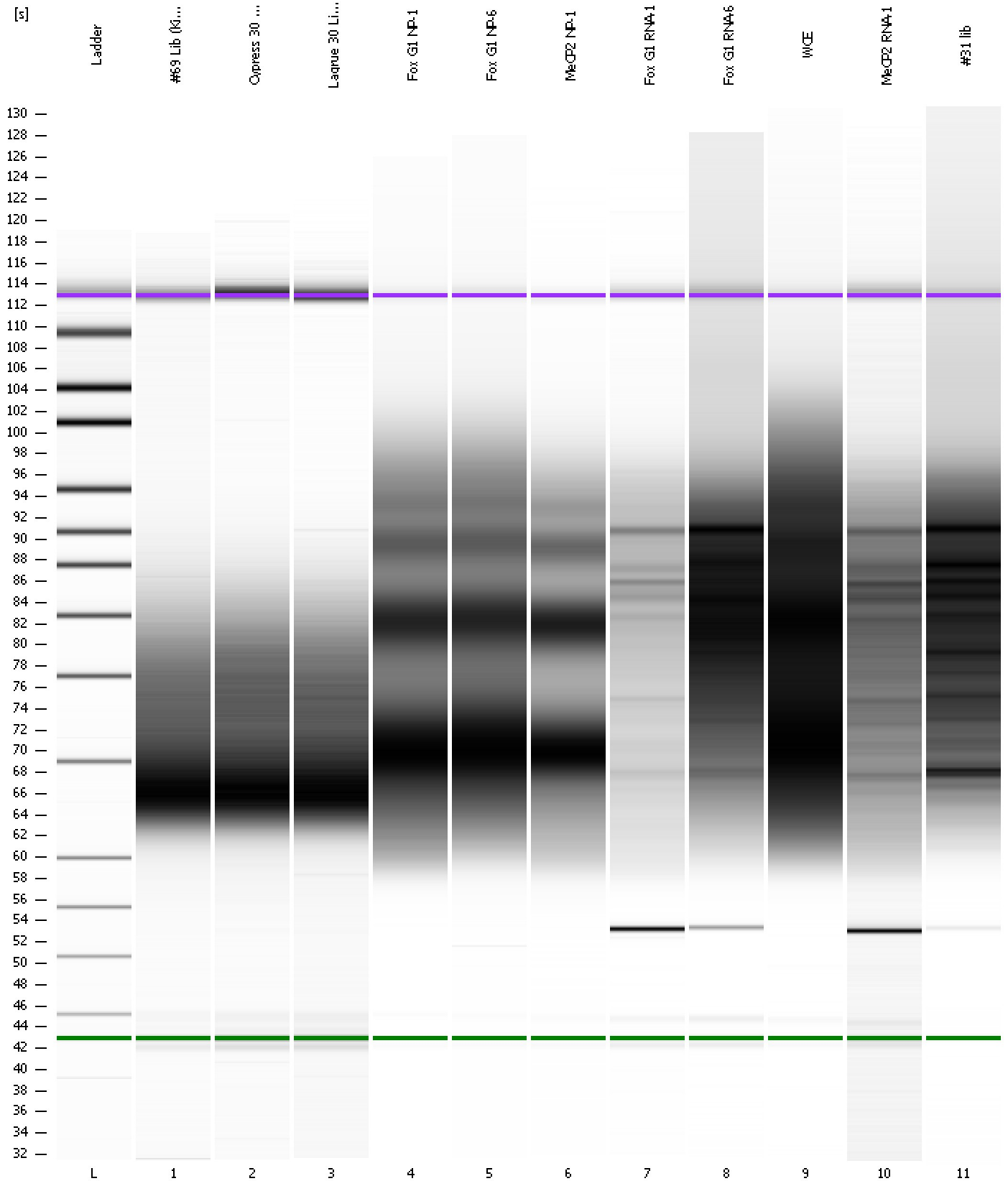
Region table for sample 11 : #31 lib

From [s]	Molarity [pmol/l]	Average Size [bp]	Conc. [pg/μl]	To [s]	Corr. Area	% of Total	Size distribution in CV [%]	Color
59.95	33,417.3	556	9,301.99	101.20	19,005.1	95	54.1	

Assay Class: High Sensitivity DNA Assay
Data Path: C:\...ents and Settings\Bioanalyzer\2012-05-04\2012-05-04_003.xad

Created: 5/4/2012 10:58:50 AM
Modified: 5/4/2012 11:41:56 AM

Gel Image



Assay Class: High Sensitivity DNA Assay
 Data Path: C:\...ents and Settings\Bioanalyzer\2012-05-04\2012-05-04_003.xad

Created: 5/4/2012 10:58:50 AM
 Modified: 5/4/2012 11:41:56 AM

Run Logbook

Description	Number	Source	Category	Sub Category	Time	Time Zone	User	Host
Run ended on port 1 (Number of wells acquired: 12)		Instrument	Run		5/4/2012 11:40:09 AM	(GMT --07:00) Pacific Standard Time	UC Davis	D8XSMGH1
Run started on port 1 (File: C:\Documents and Settings\Bioanalyzer\2012-05-04\2012-05-04_003.xad)		Instrument	Run		5/4/2012 10:58:55 AM	(GMT --07:00) Pacific Standard Time	UC Davis	D8XSMGH1
Product Number : G2938B		Instrument	Run		5/4/2012 10:58:55 AM	(GMT --07:00) Pacific Standard Time	UC Davis	D8XSMGH1
Name :		Instrument	Run		5/4/2012 10:58:55 AM	(GMT --07:00) Pacific Standard Time	UC Davis	D8XSMGH1
Vendor : Agilent Technologies		Instrument	Run		5/4/2012 10:58:55 AM	(GMT --07:00) Pacific Standard Time	UC Davis	D8XSMGH1
Serial# : DE13701086		Instrument	Run		5/4/2012 10:58:55 AM	(GMT --07:00) Pacific Standard Time	UC Davis	D8XSMGH1
Firmware : C.01.069		Instrument	Run		5/4/2012 10:58:55 AM	(GMT --07:00) Pacific Standard Time	UC Davis	D8XSMGH1
Cartridge : Electrode		Instrument	Run		5/4/2012 10:58:55 AM	(GMT --07:00) Pacific Standard Time	UC Davis	D8XSMGH1