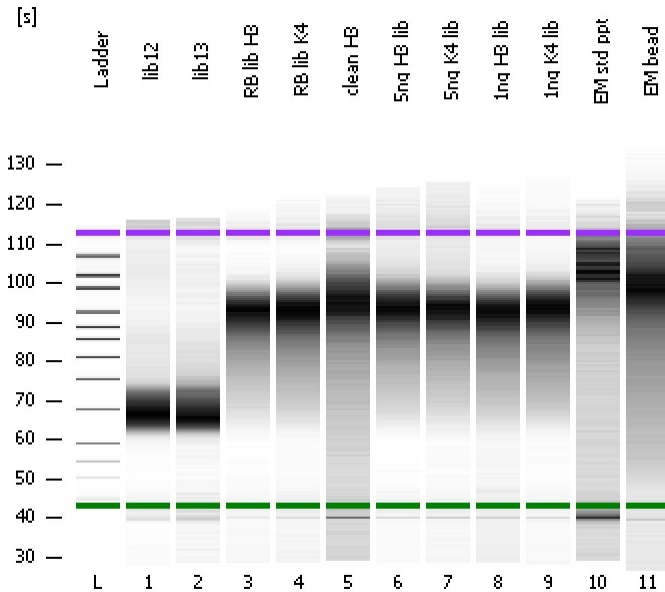


Assay Class: High Sensitivity DNA Assay
Data Path: C:\...ents and Settings\Bioanalyzer\2012-05-08\2012-05-08_004.xad

Created: 5/8/2012 12:38:52 PM
Modified: 5/8/2012 1:20:46 PM

Electrophoresis File Run Summary



Instrument Information:

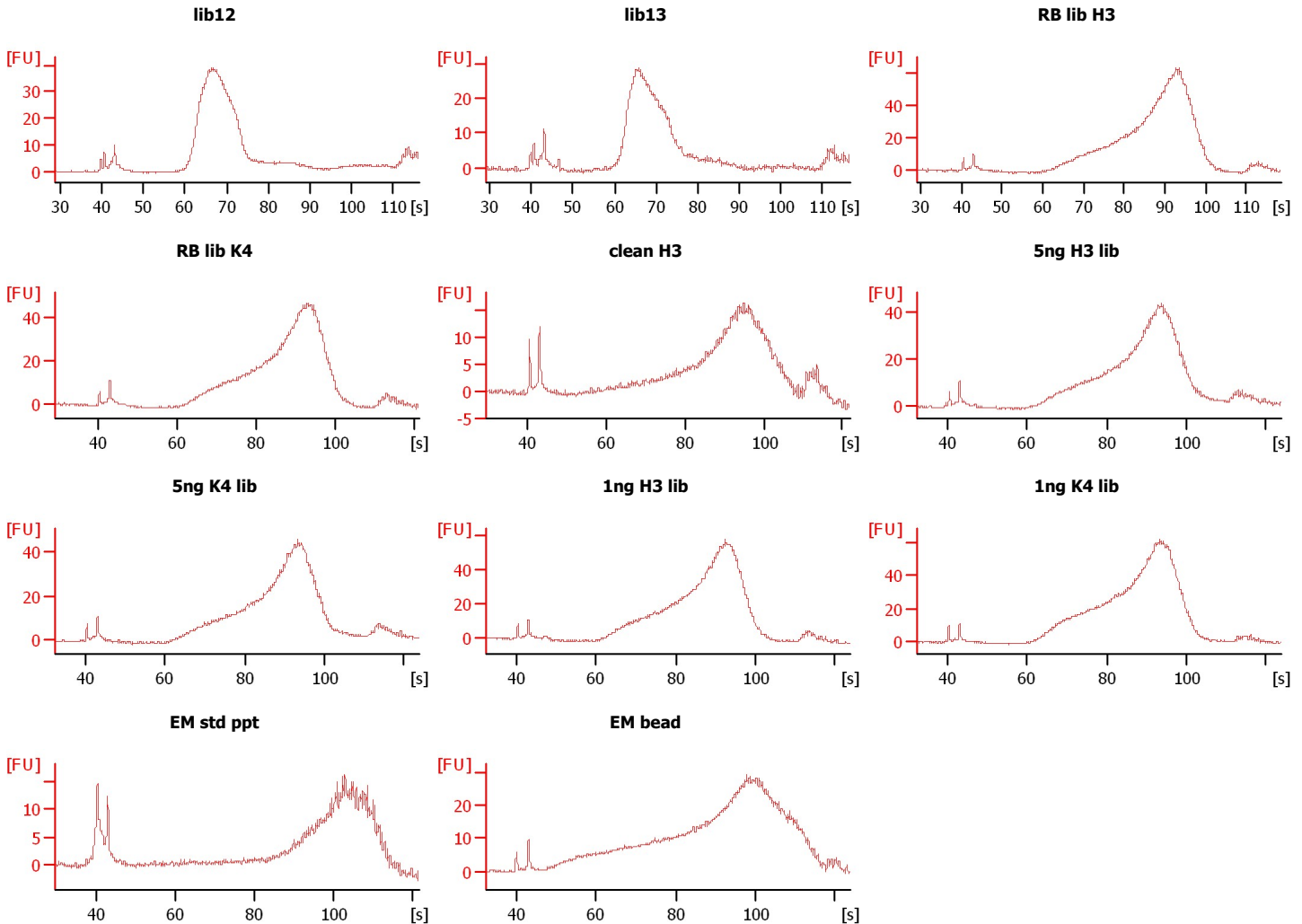
Instrument Name: DE13701086 Firmware: C.01.069
Serial#: DE13701086 Type: G2938B

Assay Information:

Assay Origin Path: C:\Program Files\Agilent\2100 bioanalyzer\2100 expert\assays\dsDNA\High Sensitivity DNA.xsy
Assay Class: High Sensitivity DNA Assay
Version: 1.03
Assay Comments: Copyright © 2003-2010 Agilent Technologies

Chip Information:

Chip Lot #:
Reagent Kit Lot #:
Chip Comments:



Assay Class: High Sensitivity DNA Assay
 Data Path: C:\...ents and Settings\Bioanalyzer\2012-05-08\2012-05-08_004.xad

Created: 5/8/2012 12:38:52 PM
 Modified: 5/8/2012 1:20:46 PM

Electrophoresis File Run Summary (Chip Summary)

Sample Name	Sample Comment	Rest. Digest	Status	Observation	Result Label	Result Color
lib12		<input type="checkbox"/>	✓			
lib13		<input type="checkbox"/>	✓			
RB lib H3		<input type="checkbox"/>	✓			
RB lib K4		<input type="checkbox"/>	✓			
clean H3		<input type="checkbox"/>	✓			
5ng H3 lib		<input type="checkbox"/>	✓			
5ng K4 lib		<input type="checkbox"/>	✓			
1ng H3 lib		<input type="checkbox"/>	✓			
1ng K4 lib		<input type="checkbox"/>	✓			
EM std ppt		<input type="checkbox"/>	✓			
EM bead		<input type="checkbox"/>	✓			
Ladder		<input type="checkbox"/>	✓			

Chip Lot #

Reagent Kit Lot #

Chip Comments :

Assay Class: High Sensitivity DNA Assay
Data Path: C:\...ents and Settings\Bioanalyzer\2012-05-08\2012-05-08_004.xad

Created: 5/8/2012 12:38:52 PM
Modified: 5/8/2012 1:20:46 PM

Electrophoresis Assay Details

General Analysis Settings

Number of Available Sample and Ladder Wells (Max.) : 12
Minimum Visible Range [s] : 32
Maximum Visible Range [s] : 138
Start Analysis Time Range [s] : 33
End Analysis Time Range [s] : 137.5
Ladder Concentration [pg/μl] : 1950
Uses Standard Area for Ladder Fragments
Lower Marker Concentration [pg/μl] : 125
Upper Marker Concentration [pg/μl] : 75
Used Upper Marker for Quantitation
Standard Curve Fit is Point to Point
Show Data Aligned to Lower and Upper Marker

Integrator Settings

Integration Start Time [s] : 33.05
Integration End Time [s] : 137
Slope Threshold : 0.8
Height Threshold [FU] : 5
Area Threshold : 0.1
Width Threshold [s] : 0.6
Baseline Plateau [s] : 0.5

Filter Settings

Filter Width [s] : 0.5
Polynomial Order : 4

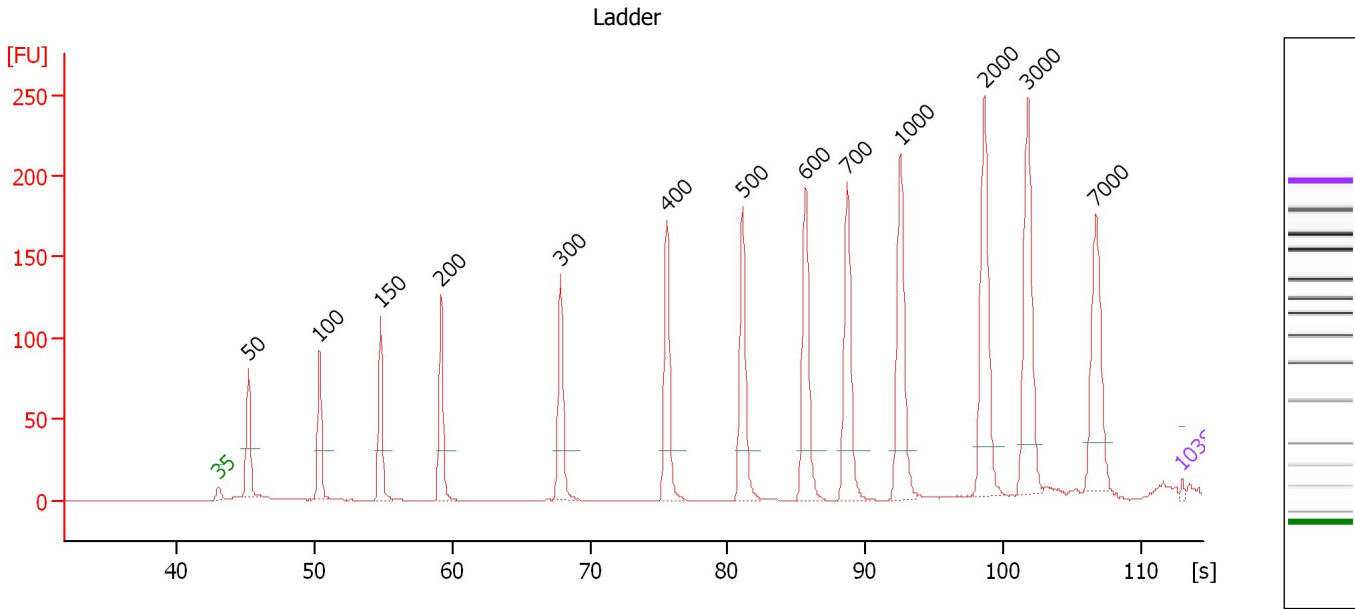
Ladder

Ladder Peak	Size	Area
1	35	160
2	50	210
3	100	208
4	150	221
5	200	242
6	300	270
7	400	305
8	500	306
9	600	336
10	700	321
11	1000	366
12	2000	413
13	3000	411
14	7000	400
15	10380	214

Assay Class: High Sensitivity DNA Assay
 Data Path: C:\...ents and Settings\Bioanalyzer\2012-05-08\2012-05-08_004.xad

Created: 5/8/2012 12:38:52 PM
 Modified: 5/8/2012 1:20:46 PM

Electropherogram Summary



Overall Results for Ladder

Noise: 0.2

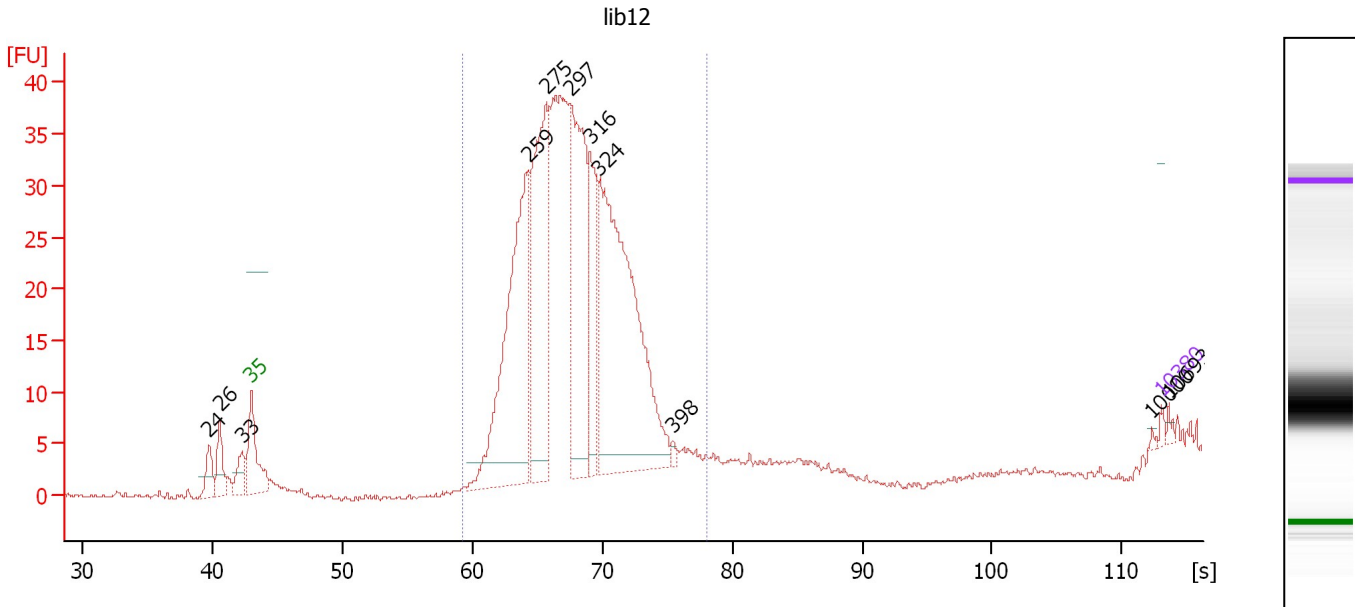
Peak table for Ladder

Peak	Size [bp]	Conc. [pg/μl]	Molarity [pmol/l]	Observations
1	35	125.00	5,411.3	Lower Marker
2	50	150.00	4,545.5	Ladder Peak
3	100	150.00	2,272.7	Ladder Peak
4	150	150.00	1,515.2	Ladder Peak
5	200	150.00	1,136.4	Ladder Peak
6	300	150.00	757.6	Ladder Peak
7	400	150.00	568.2	Ladder Peak
8	500	150.00	454.5	Ladder Peak
9	600	150.00	378.8	Ladder Peak
10	700	150.00	324.7	Ladder Peak
11	1,000	150.00	227.3	Ladder Peak
12	2,000	150.00	113.6	Ladder Peak
13	3,000	150.00	75.8	Ladder Peak
14	7,000	150.00	32.5	Ladder Peak
15	10,380	75.00	10.9	Upper Marker

Assay Class: High Sensitivity DNA Assay
 Data Path: C:\...ents and Settings\Bioanalyzer\2012-05-08\2012-05-08_004.xad

Created: 5/8/2012 12:38:52 PM
 Modified: 5/8/2012 1:20:46 PM

Electropherogram Summary Continued ...



Setpoint Deviations for sample 1 : lib12

Height Threshold [FU] : 2

Overall Results for sample 1 : lib12

Number of peaks found: 11 Corr. Area 1: 487.7
 Noise: 0.2

Peak table for sample 1 : lib12

Peak	Size [bp]	Conc. [pg/μl]	Molarity [pmol/l]	Observations
1	24	0.00	0.0	
2	26	0.00	0.0	
3	33	0.00	0.0	
4	35	125.00	5,411.3	Lower Marker
5	259	7,680.89	44,895.7	
6	275	6,021.55	33,124.1	
7	297	5,418.05	27,649.3	
8	316	2,511.57	12,050.7	
9	324	9,855.09	46,037.9	
10	398	104.05	396.0	
11	10,000	31.33	4.7	
12	10,380	75.00	10.9	Upper Marker
13	10,693	0.00	0.0	

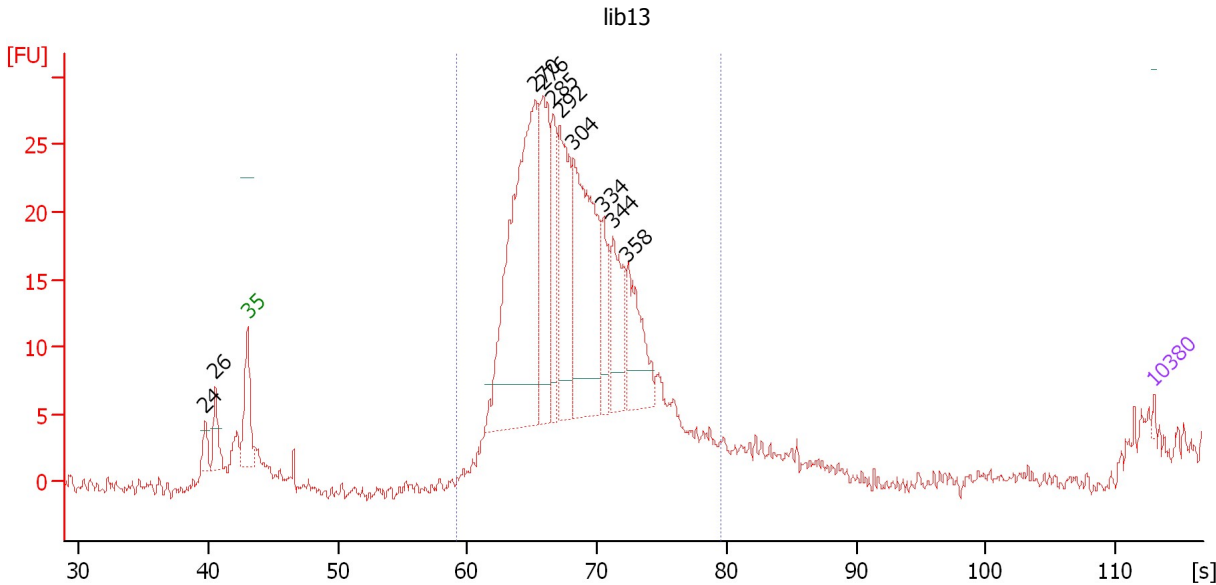
Region table for sample 1 : lib12

From [s]	Molarity [pmol/l]	Average Size [bp]	Conc. [pg/μl]	To [s]	Corr. Area	% of Total	Size distribution in CV [%]	Color
59.19	192,375.1	300	37,349.47	77.99	487.7	95	13.2	Blue

Assay Class: High Sensitivity DNA Assay
 Data Path: C:\...ents and Settings\Bioanalyzer\2012-05-08\2012-05-08_004.xad

Created: 5/8/2012 12:38:52 PM
 Modified: 5/8/2012 1:20:46 PM

Electropherogram Summary Continued ...



Setpoint Deviations for sample 2 : lib13

Height Threshold [FU] : 3 Width Threshold [s] : 0.3

Overall Results for sample 2 : lib13

Number of peaks found: 10 Corr. Area 1: 395.2
 Noise: 0.6

Peak table for sample 2 : lib13

Peak	Size [bp]	Conc. [pg/μl]	Molarity [pmol/l]	Observations
1	24	0.00	0.0	
2	26	0.00	0.0	
3	35	125.00	5,411.3	Lower Marker
4	270	13,946.05	78,357.5	
5	276	5,124.98	28,145.7	
6	285	2,577.58	13,680.9	
7	292	5,019.91	26,075.5	
8	304	7,968.41	39,701.9	
9	334	1,646.85	7,479.2	
10	344	2,723.55	12,002.2	
11	358	2,874.36	12,154.4	
12	10,380	75.00	10.9	Upper Marker

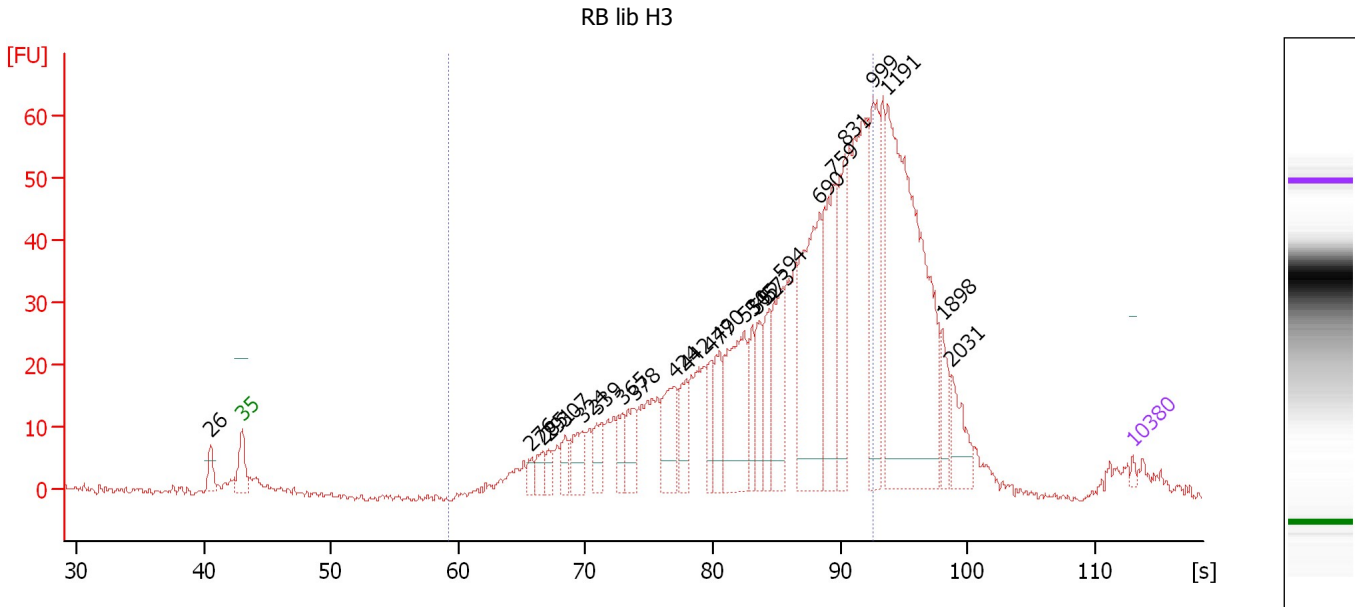
Region table for sample 2 : lib13

From [s]	Molarity [pmol/l]	Average Size [bp]	Conc. [pg/μl]	To [s]	Corr. Area	% of Total	Size distribution in CV [%]	Color
59.19	296,220.3	306	58,008.29	79.50	395.2	89	15.8	Blue

Assay Class: High Sensitivity DNA Assay
 Data Path: C:\...ents and Settings\Bioanalyzer\2012-05-08\2012-05-08_004.xad

Created: 5/8/2012 12:38:52 PM
 Modified: 5/8/2012 1:20:46 PM

Electropherogram Summary Continued ...



Overall Results for sample 3 : RB lib H3

Number of peaks found: 25 Corr. Area 1: 818.1
 Noise: 0.7


Peak table for sample 3 : RB lib H3

Peak	Size [bp]	Conc. [pg/μl]	Molarity [pmol/l]	Observations
1	26	0.00	0.0	
2	35	125.00	5,411.3	Lower Marker
3	276	337.30	1,854.3	
4	285	543.71	2,886.9	
5	291	377.76	1,965.5	
6	307	530.46	2,617.5	
7	324	1,009.88	4,722.7	
8	339	796.45	3,562.5	
9	365	671.24	2,786.7	
10	378	1,011.61	4,060.1	
11	424	1,636.77	5,843.2	
12	442	1,005.60	3,446.7	
13	477	841.88	2,676.6	
14	490	1,139.98	3,527.8	
15	530	3,168.23	9,057.5	
16	545	946.07	2,631.2	
17	552	991.68	2,721.2	
18	573	1,167.24	3,089.2	
19	594	1,979.13	5,050.3	
20	690	4,858.94	10,662.5	
21	759	3,260.13	6,504.8	
22	831	2,024.45	3,689.1	
23	999	2,615.93	3,969.1	
24	1,191	9,755.25	12,409.3	
25	1,898	759.09	605.9	
26	2,031	940.94	702.0	


Assay Class: High Sensitivity DNA Assay
Data Path: C:\...ents and Settings\Bioanalyzer\2012-05-08\2012-05-08_004.xad

Created: 5/8/2012 12:38:52 PM
Modified: 5/8/2012 1:20:46 PM

Electropherogram Summary Continued ...**... Peak table for sample 3 : RB lib H3**

Peak	Size [bp]	Conc. [pg/ μ l]	Molarity [pmol/l]	Observations
27	 10,380	75.00	10.9	Upper Marker

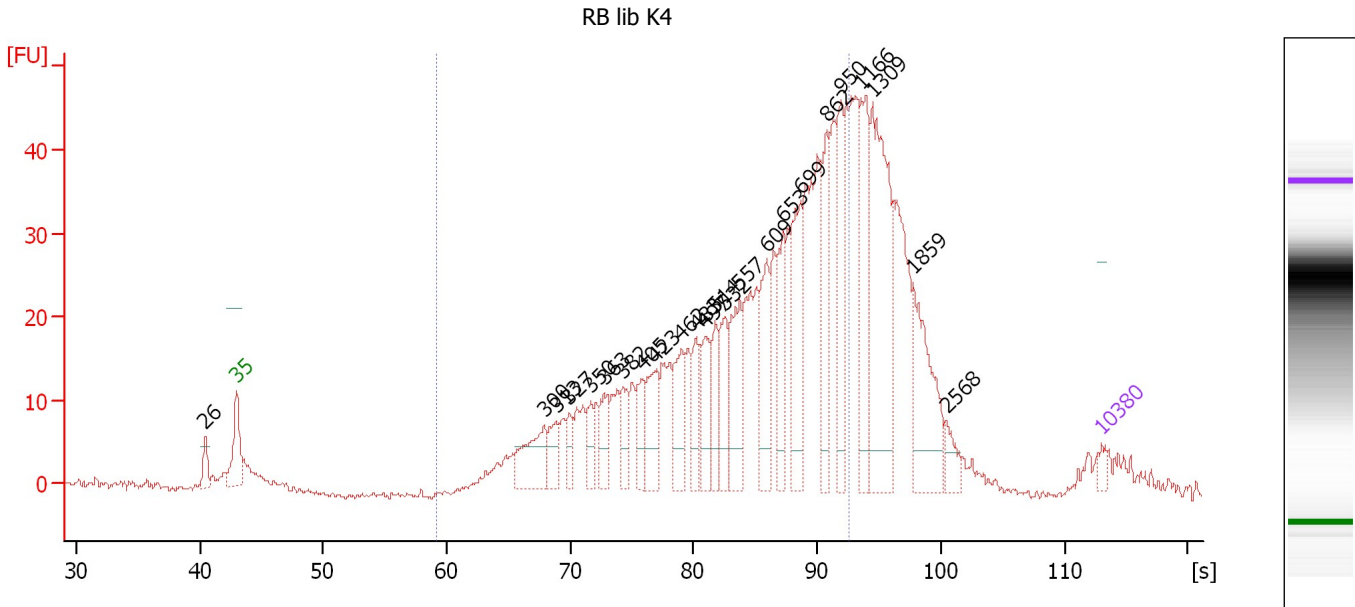
Region table for sample 3 : RB lib H3

From [s]	Molarity [pmol/l]	Average Size [bp]	Conc. [pg/ μ l]	To [s]	Corr. Area	% of Total	Size distribution in CV [%]	Color
59.19	132,044.8	615	45,258.98	92.55	818.1	69	32.0	

Assay Class: High Sensitivity DNA Assay
 Data Path: C:\...ents and Settings\Bioanalyzer\2012-05-08\2012-05-08_004.xad

Created: 5/8/2012 12:38:52 PM
 Modified: 5/8/2012 1:20:46 PM

Electropherogram Summary Continued ...



Overall Results for sample 4 : RB lib K4

Number of peaks found: 24 Corr. Area 1: 624.6
 Noise: 0.4

Peak table for sample 4 : RB lib K4

Peak	Size [bp]	Conc. [pg/μl]	Molarity [pmol/l]	Observations
1	26	0.00	0.0	
2	35	125.00	5,411.3	Lower Marker
3	300	780.49	3,939.4	
4	313	324.46	1,572.8	
5	327	235.30	1,089.6	
6	350	255.64	1,107.6	
7	363	435.58	1,817.0	
8	382	351.84	1,394.2	
9	405	338.51	1,265.6	
10	423	598.90	2,147.1	
11	462	587.79	1,927.1	
12	483	435.97	1,366.3	
13	497	560.37	1,708.6	
14	514	398.28	1,173.2	
15	532	531.98	1,516.5	
16	557	799.05	2,172.6	
17	609	733.58	1,825.9	
18	653	708.36	1,643.6	
19	699	1,042.40	2,260.4	
20	862	910.86	1,600.2	
21	950	842.01	1,342.6	
22	1,166	1,021.39	1,327.1	
23	1,309	1,968.41	2,278.4	
24	1,859	995.61	811.5	
25	2,568	199.98	118.0	
26	10,380	75.00	10.9	Upper Marker


Assay Class: High Sensitivity DNA Assay
Data Path: C:\...ents and Settings\Bioanalyzer\2012-05-08\2012-05-08_004.xad

Created: 5/8/2012 12:38:52 PM
Modified: 5/8/2012 1:20:46 PM

Electropherogram Summary Continued ...

... Region table for sample 4 :

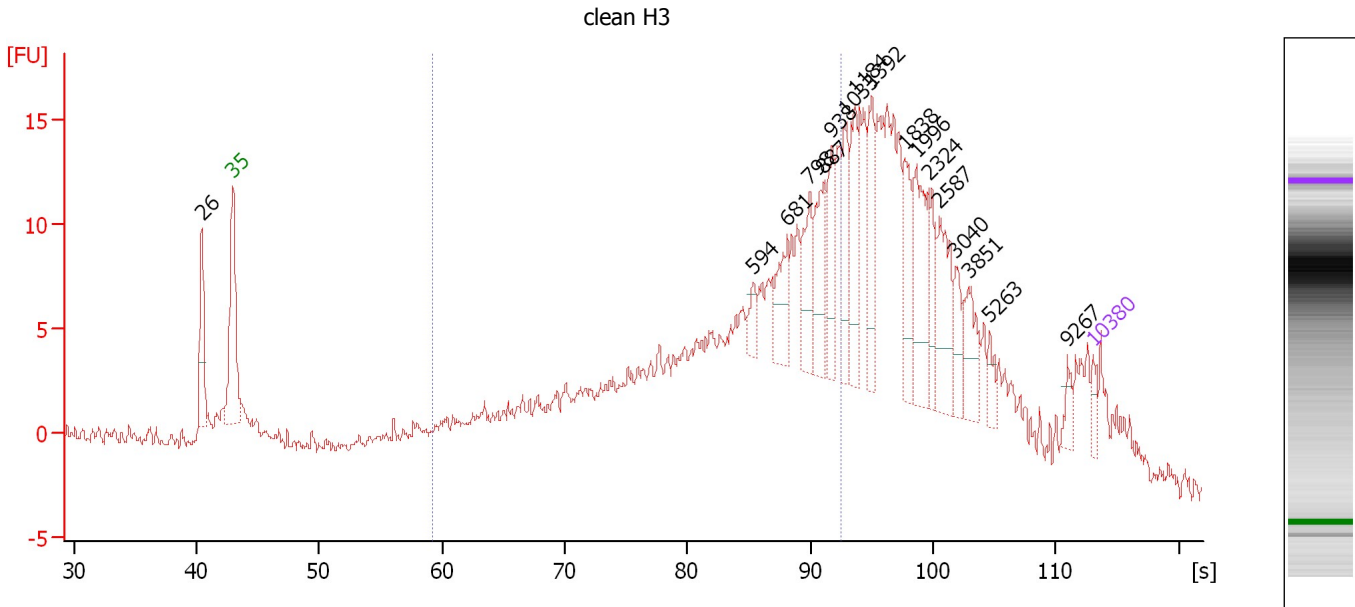
RB lib K4

From [s]	Molarity [pmol/l]	Average Size [bp]	Conc. [pg/μl]	To [s]	Corr. Area % of Total	Size distribution in CV [%]	Color	
59.19	53,596.3	609	18,143.97	92.55	624.6	68	32.6	

Assay Class: High Sensitivity DNA Assay
 Data Path: C:\...ents and Settings\Bioanalyzer\2012-05-08\2012-05-08_004.xad

Created: 5/8/2012 12:38:52 PM
 Modified: 5/8/2012 1:20:46 PM

Electropherogram Summary Continued ...



Setpoint Deviations for sample 5 : clean H3

Height Threshold [FU] : 3

Overall Results for sample 5 : clean H3

Number of peaks found: 17 Corr. Area 1: 214.2
 Noise: 0.4

Peak table for sample 5 : clean H3

Peak	Size [bp]	Conc. [pg/μl]	Molarity [pmol/l]	Observations
1	26	0.00	0.0	
2	35	125.00	5,411.3	Lower Marker
3	594	121.49	310.0	
4	681	310.48	690.5	
5	798	351.30	666.7	
6	887	388.89	664.5	
7	938	331.52	535.7	
8	1,033	319.06	467.9	
9	1,184	376.91	482.3	
10	1,392	381.42	415.0	
11	1,838	311.15	256.5	
12	1,996	486.30	369.2	
13	2,324	214.63	139.9	
14	2,587	426.81	250.0	
15	3,040	162.67	81.1	
16	3,851	267.53	105.2	
17	5,263	88.12	25.4	
18	9,267	77.20	12.6	
19	10,380	75.00	10.9	Upper Marker


Assay Class: High Sensitivity DNA Assay
Data Path: C:\...ents and Settings\Bioanalyzer\2012-05-08\2012-05-08_004.xad

Created: 5/8/2012 12:38:52 PM
Modified: 5/8/2012 1:20:46 PM

Electropherogram Summary Continued ...

... Region table for sample 5 :

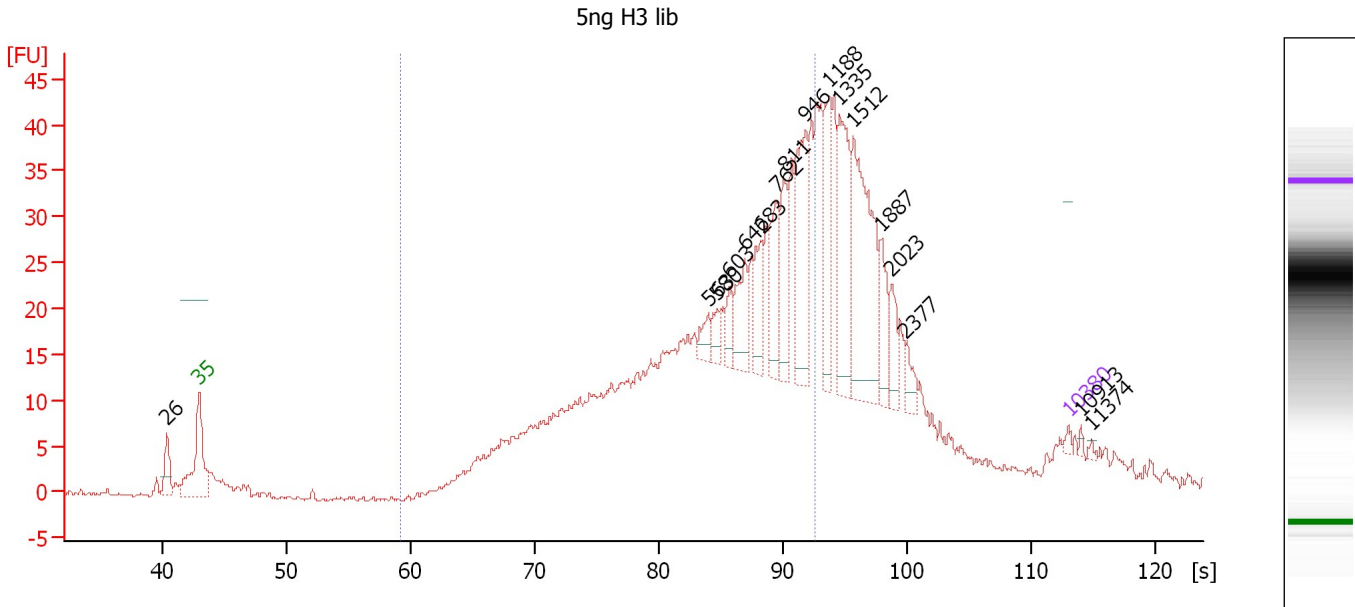
clean H3

From [s]	Molarity [pmol/l]	Average Size [bp]	Conc. [pg/μl]	To [s]	Corr. Area % of Total	Size distribution in CV [%]	Color	
59.19	32,670.5	590	10,138.44	92.55	214.2	48	35.7	

Assay Class: High Sensitivity DNA Assay
 Data Path: C:\...ents and Settings\Bioanalyzer\2012-05-08\2012-05-08_004.xad

Created: 5/8/2012 12:38:52 PM
 Modified: 5/8/2012 1:20:46 PM

Electropherogram Summary Continued ...



Setpoint Deviations for sample 6 : 5ng H3 lib

Height Threshold [FU] : 2

Overall Results for sample 6 : 5ng H3 lib

Number of peaks found: 17 Corr. Area 1: 520.2
 Noise: 0.3

Peak table for sample 6 : 5ng H3 lib

Peak	Size [bp]	Conc. [pg/μl]	Molarity [pmol/l]	Observations
1	26	0.00	0.0	
2	35	125.00	5,411.3	Lower Marker
3	563	400.07	1,075.8	
4	580	363.45	949.3	
5	603	484.97	1,219.5	
6	642	1,076.47	2,539.4	
7	683	994.82	2,205.3	
8	762	1,334.41	2,653.9	
9	811	1,261.77	2,358.6	
10	946	2,278.17	3,648.1	
11	1,188	1,445.28	1,843.5	
12	1,335	2,125.48	2,412.3	
13	1,512	3,569.65	3,578.1	
14	1,887	854.85	686.5	
15	2,023	537.66	402.7	
16	2,377	368.39	234.8	
17	10,380	75.00	10.9	Upper Marker
18	10,913	0.00	0.0	
19	11,374	0.00	0.0	


Assay Class: High Sensitivity DNA Assay
Data Path: C:\...ents and Settings\Bioanalyzer\2012-05-08\2012-05-08_004.xad

Created: 5/8/2012 12:38:52 PM
Modified: 5/8/2012 1:20:46 PM

Electropherogram Summary Continued ...

... Region table for sample 6 :

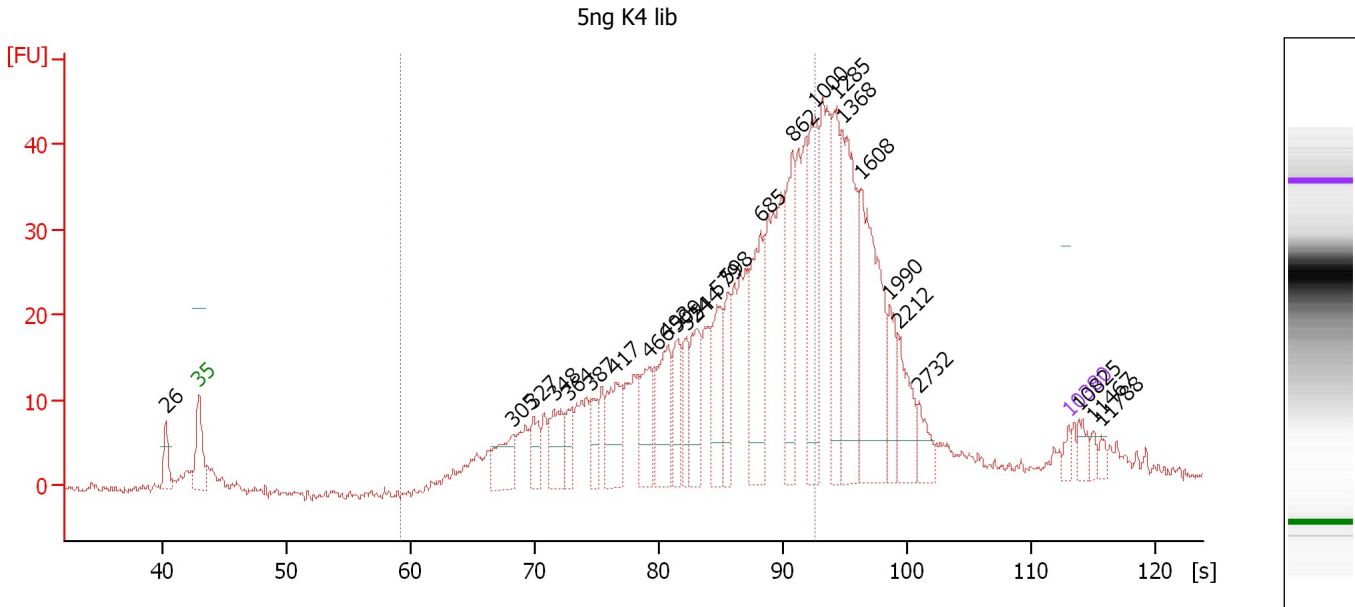
5ng H3 lib

From [s]	Molarity [pmol/l]	Average Size [bp]	Conc. [pg/μl]	To [s]	Corr. Area % of Total	Size distribution in CV [%]	Color	
59.19	123,495.0	609	41,864.36	92.55	520.2	61	32.6	

Assay Class: High Sensitivity DNA Assay
 Data Path: C:\...ents and Settings\Bioanalyzer\2012-05-08\2012-05-08_004.xad

Created: 5/8/2012 12:38:52 PM
 Modified: 5/8/2012 1:20:46 PM

Electropherogram Summary Continued ...



Overall Results for sample 7 : 5ng K4 lib

Number of peaks found: 26 Corr. Area 1: 542.4
 Noise: 0.4

Peak table for sample 7 : 5ng K4 lib

Peak	Size [bp]	Conc. [pg/μl]	Molarity [pmol/l]	Observations
1	26	0.00	0.0	
2	35	125.00	5,411.3	Lower Marker
3	305	585.24	2,908.1	
4	327	346.62	1,607.2	
5	348	568.57	2,475.3	
6	364	298.57	1,242.9	
7	387	278.40	1,089.9	
8	417	673.60	2,445.0	
9	466	621.48	2,019.1	
10	493	876.68	2,694.8	
11	509	487.60	1,450.2	
12	524	395.08	1,141.4	
13	544	653.91	1,819.8	
14	579	737.00	1,927.2	
15	598	459.72	1,164.0	
16	685	1,248.28	2,762.8	
17	862	1,129.77	1,985.8	
18	1,000	1,203.16	1,822.2	
19	1,285	890.40	1,049.6	
20	1,368	1,455.48	1,612.3	
21	1,608	1,695.37	1,597.8	
22	1,990	371.87	283.1	
23	2,212	473.33	324.3	
24	2,732	233.50	129.5	
25	10,380	75.00	10.9	Upper Marker
26	10,825	0.00	0.0	


Assay Class: High Sensitivity DNA Assay
Data Path: C:\...ents and Settings\Bioanalyzer\2012-05-08\2012-05-08_004.xad

Created: 5/8/2012 12:38:52 PM
Modified: 5/8/2012 1:20:46 PM

Electropherogram Summary Continued ...**... Peak table for sample 7 : 5ng K4 lib**

Peak	Size [bp]	Conc. [pg/μl]	Molarity [pmol/l]	Observations
27	11,467	0.00	0.0	
28	11,788	0.00	0.0	

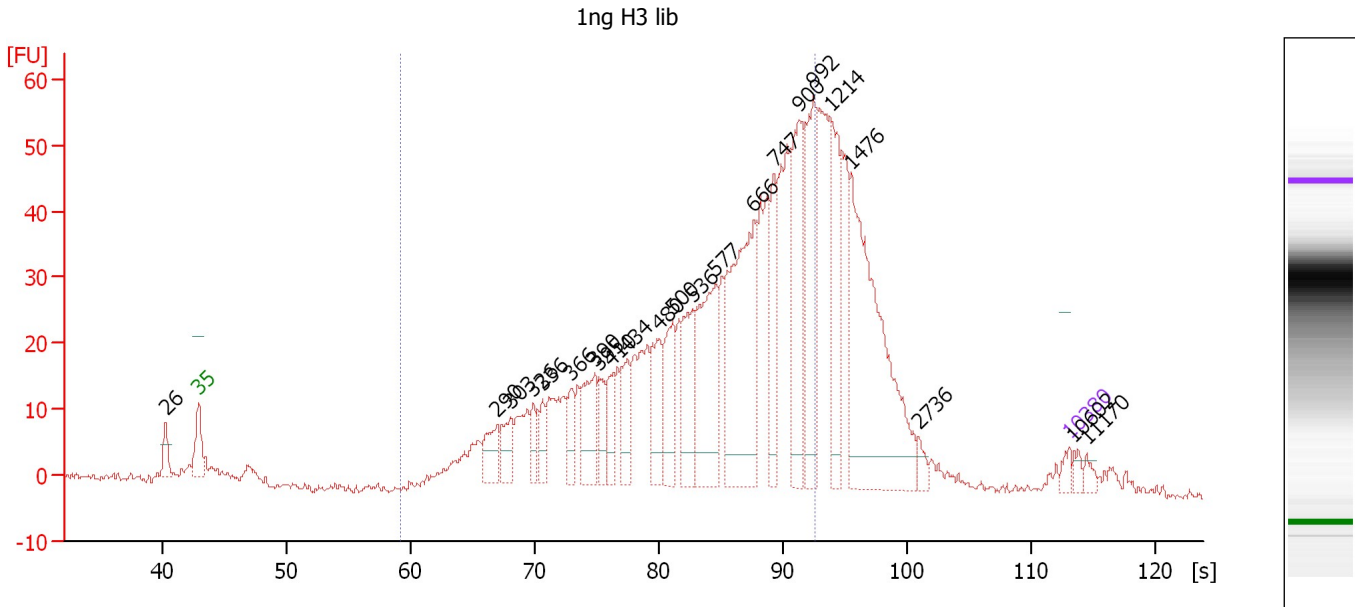
Region table for sample 7 : 5ng K4 lib

From [s]	Molarity [pmol/l]	Average Size [bp]	Conc. [pg/μl]	To [s]	Corr. Area % of Total	Size distribution in CV [%]	Color	
59.19	51,222.2	611	17,368.29	92.55	542.4	61	32.7	

Assay Class: High Sensitivity DNA Assay
 Data Path: C:\...ents and Settings\Bioanalyzer\2012-05-08\2012-05-08_004.xad

Created: 5/8/2012 12:38:52 PM
 Modified: 5/8/2012 1:20:46 PM

Electropherogram Summary Continued ...



Overall Results for sample 8 : 1ng H3 lib

Number of peaks found: 23 Corr. Area 1: 818.0
 Noise: 0.7

Peak table for sample 8 : 1ng H3 lib

Peak	Size [bp]	Conc. [pg/μl]	Molarity [pmol/l]	Observations
1	26	0.00	0.0	
2	35	125.00	5,411.3	Lower Marker
3	290	395.33	2,063.1	
4	303	336.12	1,682.3	
5	326	232.07	1,077.6	
6	336	256.07	1,153.6	
7	366	283.89	1,175.8	
8	390	619.28	2,405.8	
9	395	279.90	1,072.7	
10	410	305.05	1,127.3	
11	434	408.26	1,425.2	
12	480	601.73	1,897.7	
13	500	642.00	1,944.1	
14	536	765.77	2,163.5	
15	577	1,306.03	3,428.2	
16	666	2,249.00	5,115.2	
17	747	631.89	1,280.9	
18	900	1,255.81	2,115.0	
19	992	1,049.18	1,603.0	
20	1,214	898.42	1,120.9	
21	1,476	2,528.41	2,594.6	
22	2,736	88.50	49.0	
23	10,380	75.00	10.9	Upper Marker
24	10,602	0.00	0.0	
25	11,170	0.00	0.0	


Assay Class: High Sensitivity DNA Assay
Data Path: C:\...ents and Settings\Bioanalyzer\2012-05-08\2012-05-08_004.xad

Created: 5/8/2012 12:38:52 PM
Modified: 5/8/2012 1:20:46 PM

Electropherogram Summary Continued ...

... Region table for sample 8 :

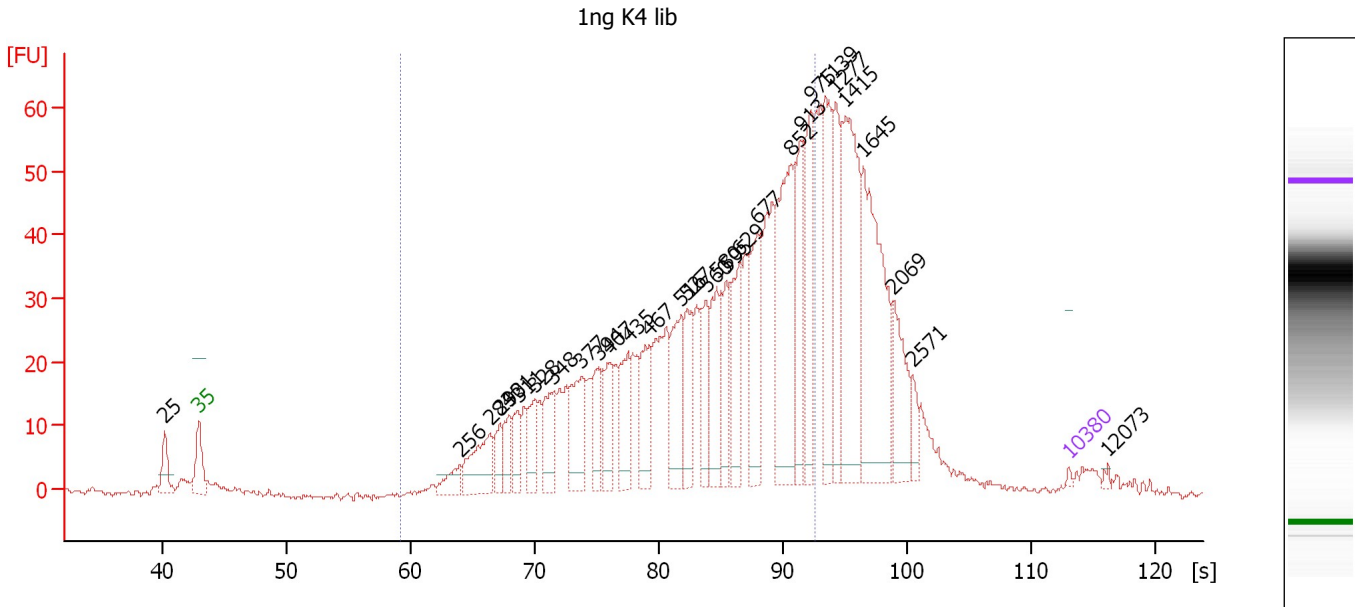
1ng H3 lib

From [s]	Molarity [pmol/l]	Average Size [bp]	Conc. [pg/μl]	To [s]	Corr. Area	% of Total	Size distribution in CV [%]	Color
59.19	53,272.4	601	17,709.57	92.55	818.0	69	33.1	

Assay Class: High Sensitivity DNA Assay
 Data Path: C:\...ents and Settings\Bioanalyzer\2012-05-08\2012-05-08_004.xad

Created: 5/8/2012 12:38:52 PM
 Modified: 5/8/2012 1:20:46 PM

Electropherogram Summary Continued ...



Setpoint Deviations for sample 9 : 1ng K4 lib

Height Threshold [FU] : 3

Overall Results for sample 9 : 1ng K4 lib

Number of peaks found: 30 Corr. Area 1: 879.4
 Noise: 0.4

Peak table for sample 9 : 1ng K4 lib


Peak	Size [bp]	Conc. [pg/μl]	Molarity [pmol/l]	Observations
1	25	0.00	0.0	
2	35	125.00	5,411.3	Lower Marker
3	256	1,221.85	7,230.6	
4	284	3,192.13	17,059.6	
5	293	1,152.42	5,966.1	
6	301	1,393.54	7,004.3	
7	311	1,468.94	7,167.9	
8	328	1,683.00	7,773.8	
9	348	2,386.98	10,393.9	
10	377	3,254.31	13,080.7	
11	394	1,707.06	6,566.9	
12	407	2,374.50	8,828.8	
13	435	2,562.93	8,916.9	
14	467	2,820.66	9,153.9	
15	516	3,610.04	10,594.1	
16	527	2,685.81	7,728.8	
17	560	2,341.12	6,331.3	
18	580	3,013.34	7,876.2	
19	595	2,280.39	5,806.8	
20	629	3,449.48	8,305.0	
21	677	4,172.42	9,340.1	
22	852	7,481.95	13,307.6	

Assay Class: High Sensitivity DNA Assay
 Data Path: C:\...ents and Settings\Bioanalyzer\2012-05-08\2012-05-08_004.xad


Created: 5/8/2012 12:38:52 PM
 Modified: 5/8/2012 1:20:46 PM

Electropherogram Summary Continued ...

... Peak table for sample 9 : 1ng K4 lib

Peak	Size [bp]	Conc. [pg/μl]	Molarity [pmol/l]	Observations
23	913	3,617.40	6,000.0	
24	975	4,037.47	6,273.6	
25	1,139	4,072.60	5,417.7	
26	1,277	3,395.43	4,028.7	
27	1,415	7,513.12	8,045.0	
28	1,645	7,916.26	7,291.5	
29	2,069	2,538.59	1,858.8	
30	2,571	677.28	399.1	
31	 10,380	75.00	10.9	Upper Marker
32	12,073	0.00	0.0	

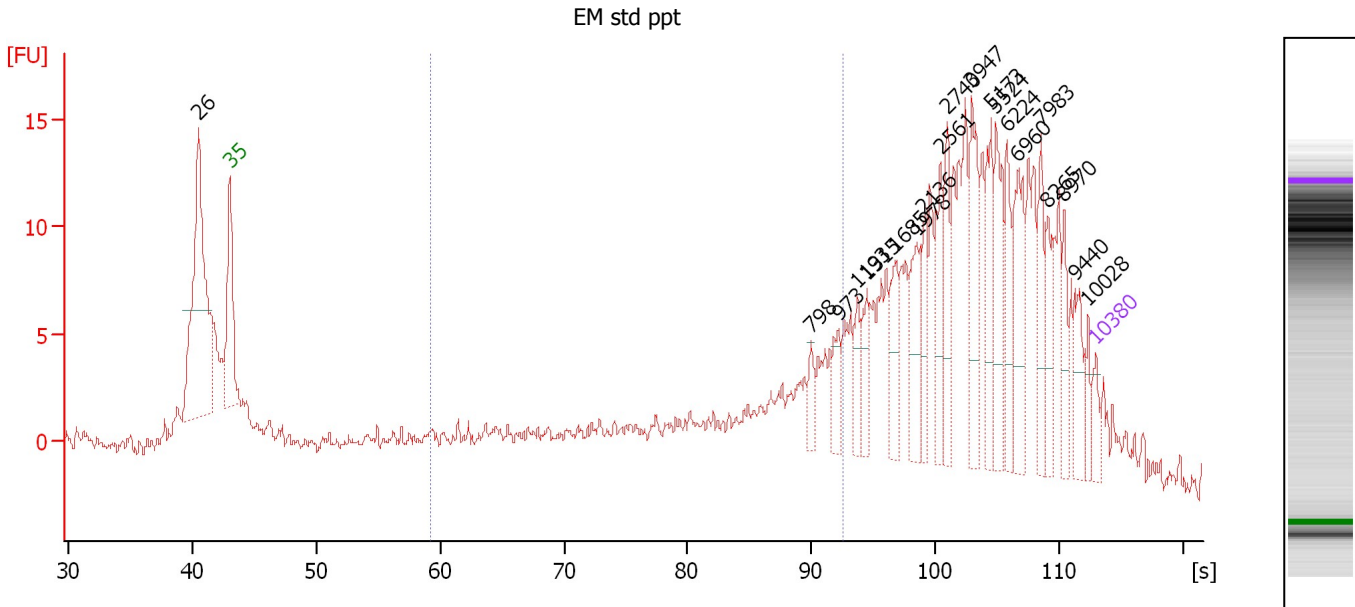
Region table for sample 9 : 1ng K4 lib

From [s]	Molarity [pmol/l]	Average Size [bp]	Conc. [pg/μl]	To [s]	Corr. Area % of Total	Size distribution in CV [%]	Color	
59.19	280,639.8	587	90,493.71	92.55	879.4	66	34.3	

Assay Class: High Sensitivity DNA Assay
 Data Path: C:\...ents and Settings\Bioanalyzer\2012-05-08\2012-05-08_004.xad

Created: 5/8/2012 12:38:52 PM
 Modified: 5/8/2012 1:20:46 PM

Electropherogram Summary Continued ...



Overall Results for sample 10 : EM std ppt

Number of peaks found: 20 Corr. Area 1: 92.4
 Noise: 0.4

Peak table for sample 10 : EM std ppt

Peak	Size [bp]	Conc. [pg/μl]	Molarity [pmol/l]	Observations
1	26	0.00	0.0	
2	35	125.00	5,411.3	Lower Marker
3	798	91.16	173.0	
4	973	127.13	197.9	
5	1,193	114.73	145.7	
6	1,315	146.16	168.4	
7	1,685	182.18	163.8	
8	1,978	234.75	179.8	
9	2,136	162.40	115.2	
10	2,561	240.68	142.4	
11	2,740	206.74	114.3	
12	3,947	327.51	125.7	
13	5,173	259.11	75.9	
14	5,524	288.27	79.1	
15	6,224	221.66	54.0	
16	6,960	331.07	72.1	
17	7,983	193.55	36.7	
18	8,265	203.36	37.3	
19	8,970	135.91	23.0	
20	9,440	153.77	24.7	
21	10,028	76.58	11.6	
22	10,380	75.00	10.9	Upper Marker

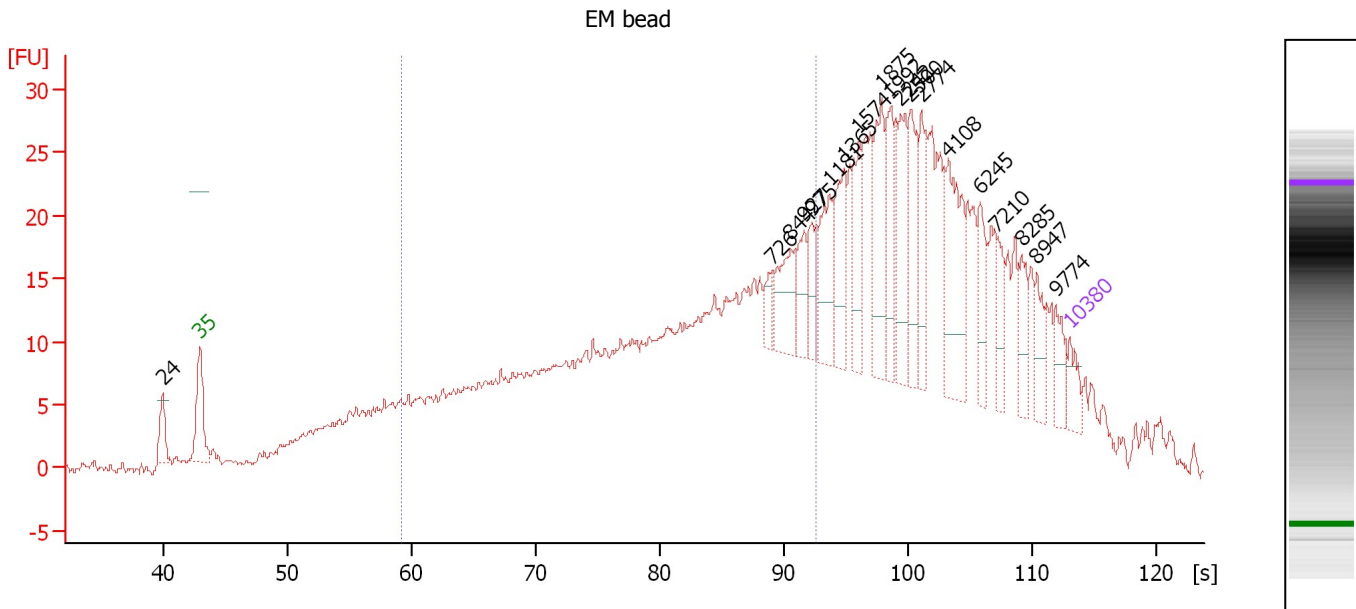
Region table for sample 10 : EM std ppt

From [s]	Molarity [pmol/l]	Average Size [bp]	Conc. [pg/μl]	To [s]	Corr. Area	% of Total	Size distribution in CV [%]	Color
59.19	11,570.1	560	3,236.23	92.55	92.4	22	40.2	Blue

Assay Class: High Sensitivity DNA Assay
 Data Path: C:\...ents and Settings\Bioanalyzer\2012-05-08\2012-05-08_004.xad

Created: 5/8/2012 12:38:52 PM
 Modified: 5/8/2012 1:20:46 PM

Electropherogram Summary Continued ...



Overall Results for sample 11 : EM bead

Number of peaks found: 19 Corr. Area 1: 448.3
 Noise: 0.3

Peak table for sample 11 : EM bead

Peak	Size [bp]	Conc. [pg/μl]	Molarity [pmol/l]	Observations
1	24	0.00	0.0	
2	35	125.00	5,411.3	Lower Marker
3	726	69.86	145.9	
4	844	198.40	356.0	
5	927	130.56	213.3	
6	975	112.52	174.9	
7	1,181	222.93	286.1	
8	1,365	216.72	240.6	
9	1,574	164.11	158.0	
10	1,875	263.32	212.8	
11	1,992	185.86	141.4	
12	2,242	263.08	177.8	
13	2,500	195.78	118.6	
14	2,774	166.94	91.2	
15	4,108	341.18	125.8	
16	6,245	134.29	32.6	
17	7,210	109.74	23.1	
18	8,285	103.24	18.9	
19	8,947	102.66	17.4	
20	9,774	85.42	13.2	
21	10,380	75.00	10.9	Upper Marker

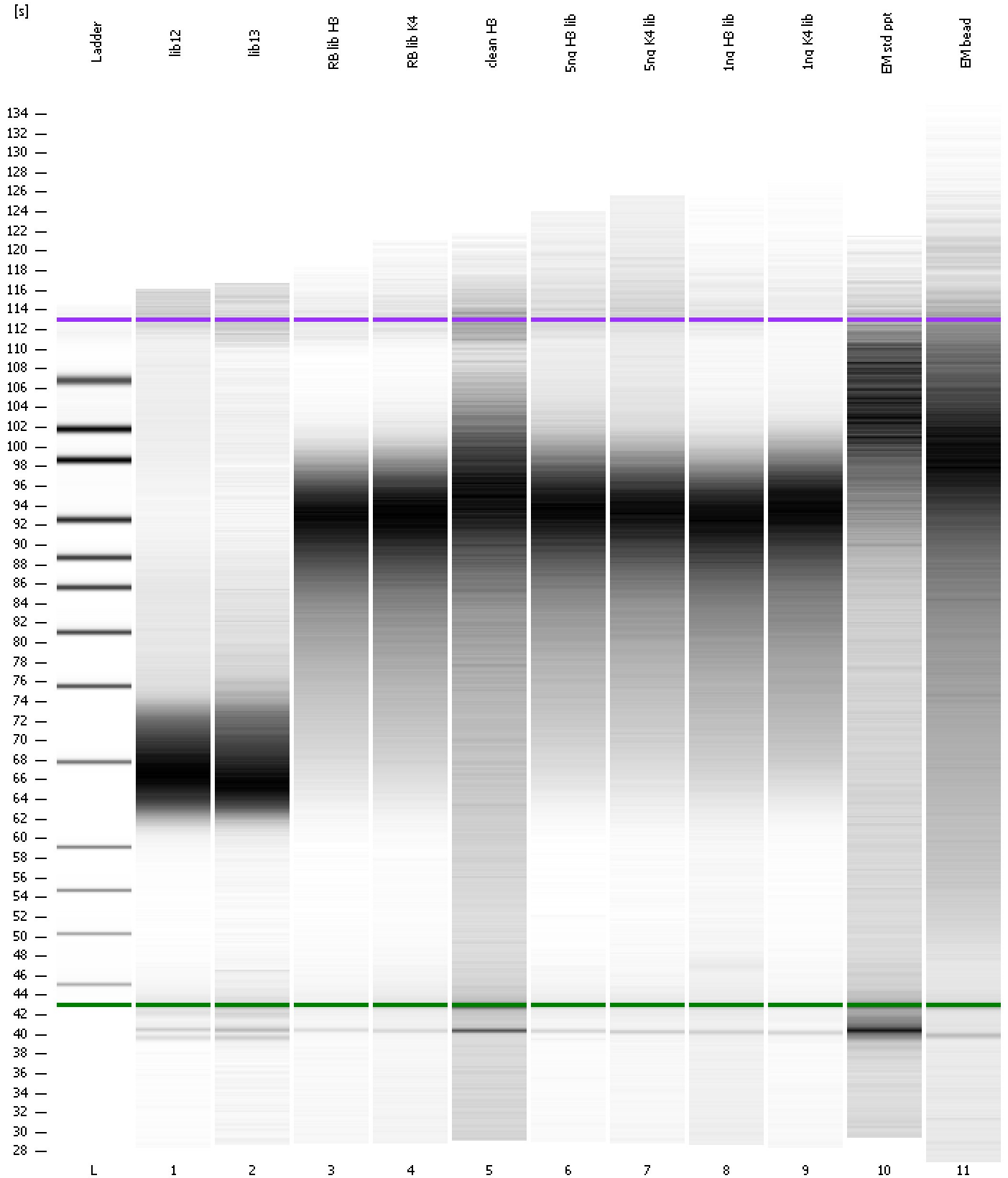
Region table for sample 11 : EM bead

From [s]	Molarity [pmol/l]	Average Size [bp]	Conc. [pg/μl]	To [s]	Corr. Area	% of Total	Size distribution in CV [%]	Color
59.19	29,750.3	518	7,933.81	92.55	448.3	43	40.3	Blue

Assay Class: High Sensitivity DNA Assay
Data Path: C:\...ents and Settings\Bioanalyzer\2012-05-08\2012-05-08_004.xad

Created: 5/8/2012 12:38:52 PM
Modified: 5/8/2012 1:20:46 PM

Gel Image



Assay Class: High Sensitivity DNA Assay
 Data Path: C:\...ents and Settings\Bioanalyzer\2012-05-08\2012-05-08_004.xad

Created: 5/8/2012 12:38:52 PM
 Modified: 5/8/2012 1:20:46 PM

Run Logbook

Description	Number	Source	Category	Sub Category	Time	Time Zone	User	Host
Run ended on port 1 (Number of wells acquired: 12)		Instrument	Run		5/8/2012 1:20:06 PM	(GMT --07:00) Pacific Standard Time	UC Davis	D8XSMGH1
Run started on port 1 (File: C:\Documents and Settings\Bioanalyzer\2012-05-08\2012-05-08_004.xad)		Instrument	Run		5/8/2012 12:38:53 PM	(GMT --07:00) Pacific Standard Time	UC Davis	D8XSMGH1
Product Number : G2938B		Instrument	Run		5/8/2012 12:38:53 PM	(GMT --07:00) Pacific Standard Time	UC Davis	D8XSMGH1
Name :		Instrument	Run		5/8/2012 12:38:53 PM	(GMT --07:00) Pacific Standard Time	UC Davis	D8XSMGH1
Vendor : Agilent Technologies		Instrument	Run		5/8/2012 12:38:53 PM	(GMT --07:00) Pacific Standard Time	UC Davis	D8XSMGH1
Serial# : DE13701086		Instrument	Run		5/8/2012 12:38:53 PM	(GMT --07:00) Pacific Standard Time	UC Davis	D8XSMGH1
Firmware : C.01.069		Instrument	Run		5/8/2012 12:38:53 PM	(GMT --07:00) Pacific Standard Time	UC Davis	D8XSMGH1
Cartridge : Electrode		Instrument	Run		5/8/2012 12:38:53 PM	(GMT --07:00) Pacific Standard Time	UC Davis	D8XSMGH1