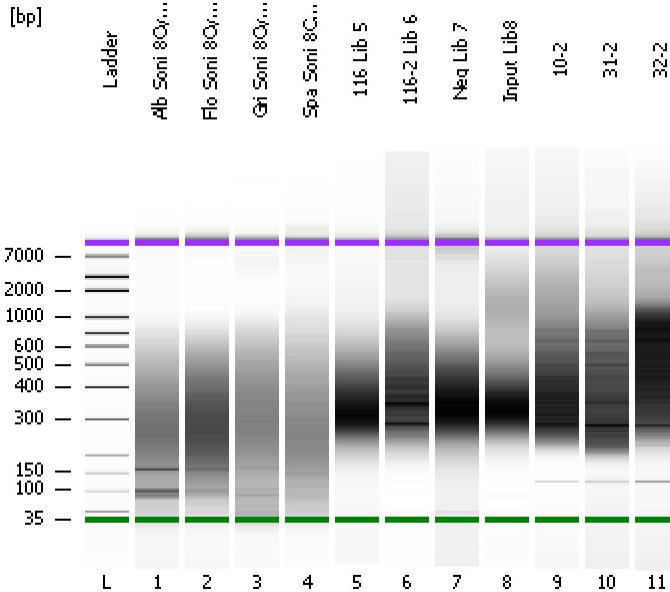


Assay Class: High Sensitivity DNA Assay
Data Path: C:\...ents and Settings\Bioanalyzer\2012-05-08\2012-05-08_007.xad

Created: 5/8/2012 4:27:40 PM
Modified: 5/8/2012 5:10:03 PM

Electrophoresis File Run Summary



Instrument Information:

Instrument Name: DE13701086 Firmware: C.01.069
Serial#: DE13701086 Type: G2938B

Assay Information:

Assay Origin Path: C:\Program Files\Agilent\2100 bioanalyzer\2100 expert\assays\dsDNA\High Sensitivity DNA.xsy
Assay Class: High Sensitivity DNA Assay
Version: 1.03
Assay Comments: Copyright © 2003-2010 Agilent Technologies

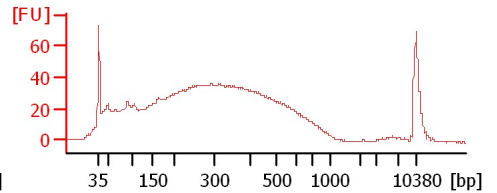
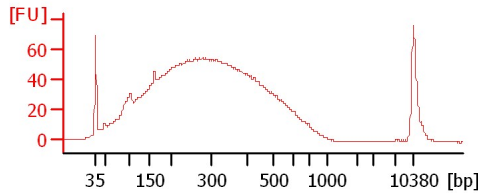
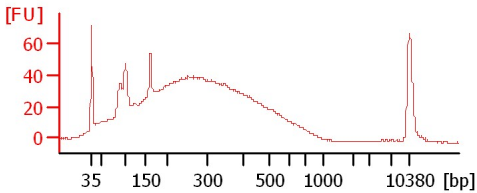
Chip Information:

Chip Lot #:
Reagent Kit Lot #:
Chip Comments:

Alb Soni 8Cycles 1:10

Flo Soni 8Cycles 1:10

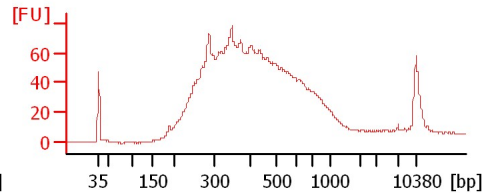
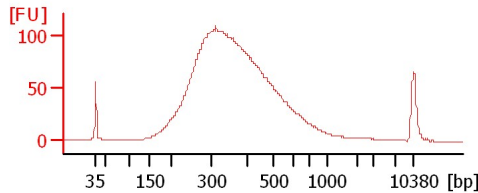
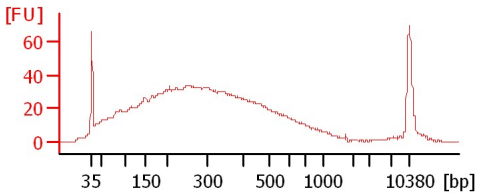
Gri Soni 8Cycles 1:10



Spa Soni 8Cycles 1:10

116 Lib 5

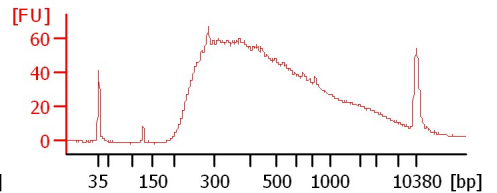
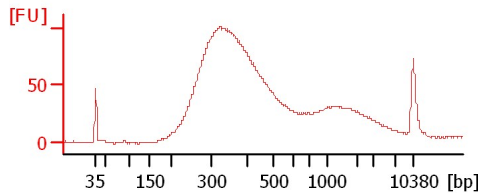
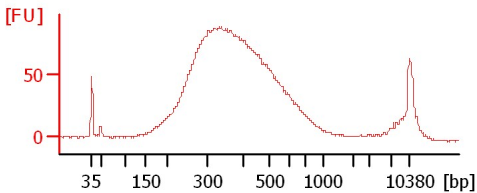
116-2 Lib 6



Neg Lib 7

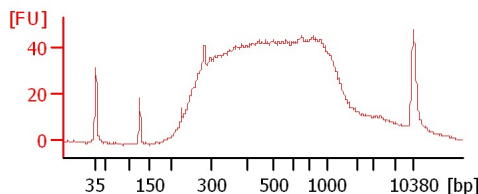
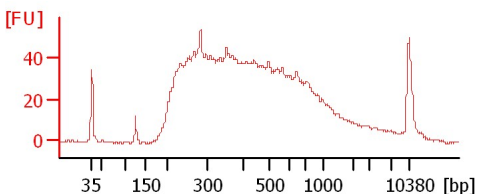
Input Lib8

10-2



31-2

32-2



Assay Class: High Sensitivity DNA Assay
Data Path: C:\...ents and Settings\Bioanalyzer\2012-05-08\2012-05-08_007.xad

Created: 5/8/2012 4:27:40 PM
Modified: 5/8/2012 5:10:03 PM

Electrophoresis File Run Summary (Chip Summary)

Sample Name	Sample Comment	Rest. Digest	Status	Observation	Result Label	Result Color
Alb Soni 8Cycles 1:10		<input type="checkbox"/>	✓			
Flo Soni 8Cycles 1:10		<input type="checkbox"/>	✓			
Gri Soni 8Cycles 1:10		<input type="checkbox"/>	✓			
Spa Soni 8Cycles 1:10		<input type="checkbox"/>	✓			
116 Lib 5		<input type="checkbox"/>	✓			
116-2 Lib 6		<input type="checkbox"/>	✓			
Neg Lib 7		<input type="checkbox"/>	✓			
Input Lib8		<input type="checkbox"/>	✓			
10-2		<input type="checkbox"/>	✓			
31-2		<input type="checkbox"/>	✓			
32-2		<input type="checkbox"/>	✓			
Ladder		<input type="checkbox"/>	✓			

Chip Lot #

Reagent Kit Lot #

Chip Comments :

Assay Class: High Sensitivity DNA Assay
Data Path: C:\...ents and Settings\Bioanalyzer\2012-05-08\2012-05-08_007.xad

Created: 5/8/2012 4:27:40 PM
Modified: 5/8/2012 5:10:03 PM

Electrophoresis Assay Details

General Analysis Settings

Number of Available Sample and Ladder Wells (Max.) : 12
Minimum Visible Range [s] : 32
Maximum Visible Range [s] : 138
Start Analysis Time Range [s] : 33
End Analysis Time Range [s] : 137.5
Ladder Concentration [pg/μl] : 1950
Uses Standard Area for Ladder Fragments
Lower Marker Concentration [pg/μl] : 125
Upper Marker Concentration [pg/μl] : 75
Used Upper Marker for Quantitation
Standard Curve Fit is Point to Point
Show Data Aligned to Lower and Upper Marker

Integrator Settings

Integration Start Time [s] : 33.05
Integration End Time [s] : 137
Slope Threshold : 0.8
Height Threshold [FU] : 5
Area Threshold : 0.1
Width Threshold [s] : 0.6
Baseline Plateau [s] : 0.5

Filter Settings

Filter Width [s] : 0.5
Polynomial Order : 4

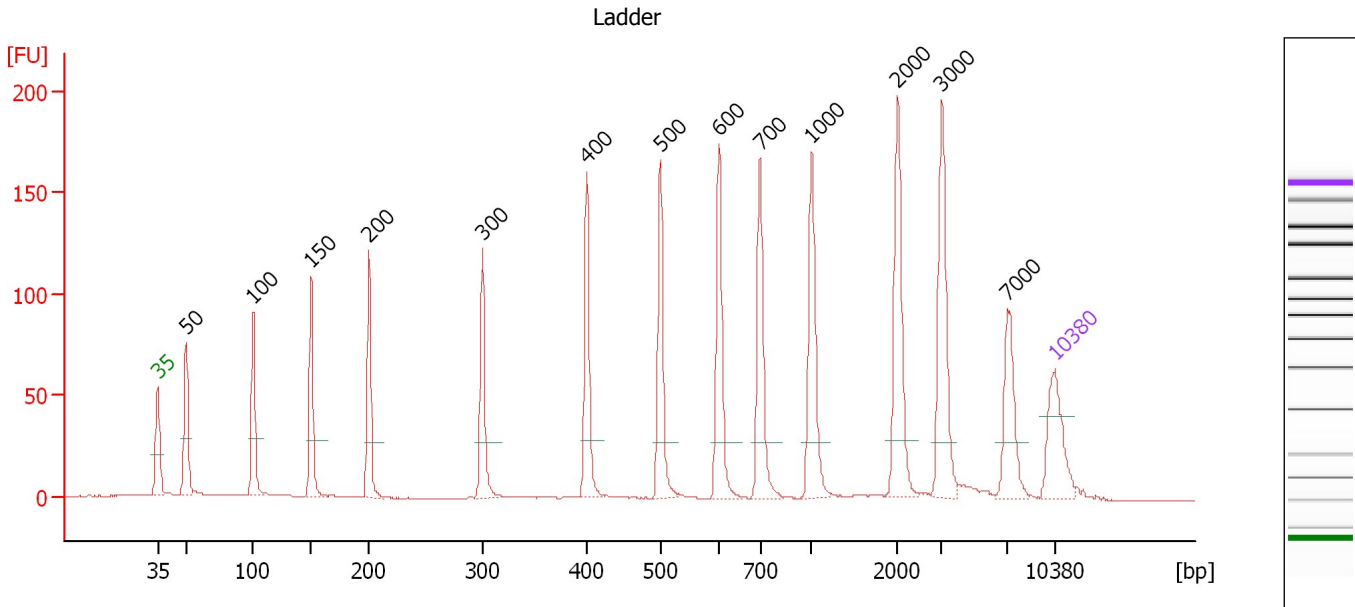
Ladder

Ladder Peak	Size	Area
1	35	160
2	50	210
3	100	208
4	150	221
5	200	242
6	300	270
7	400	305
8	500	306
9	600	336
10	700	321
11	1000	366
12	2000	413
13	3000	411
14	7000	400
15	10380	214

Assay Class: High Sensitivity DNA Assay
 Data Path: C:\...ents and Settings\Bioanalyzer\2012-05-08\2012-05-08_007.xad

Created: 5/8/2012 4:27:40 PM
 Modified: 5/8/2012 5:10:03 PM

Electropherogram Summary



Overall Results for Ladder

Noise: 0.1

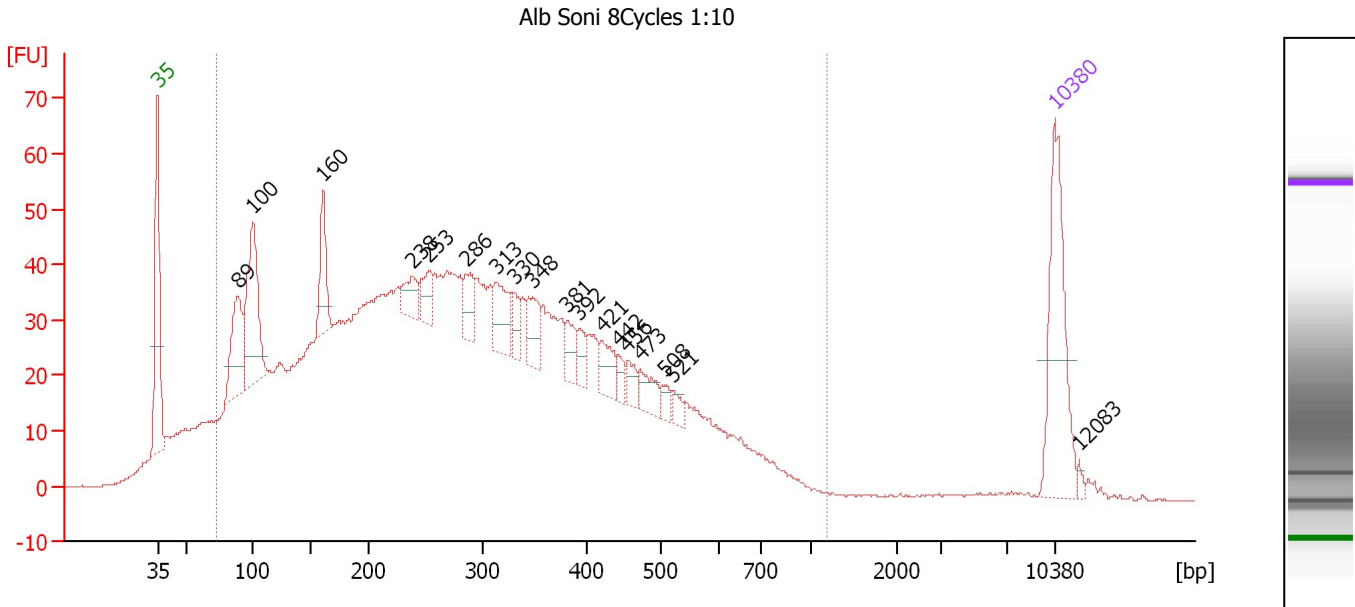
Peak table for Ladder

Peak	Size [bp]	Conc. [pg/μl]	Molarity [pmol/l]	Observations
1	35	125.00	5,411.3	Lower Marker
2	50	150.00	4,545.5	Ladder Peak
3	100	150.00	2,272.7	Ladder Peak
4	150	150.00	1,515.2	Ladder Peak
5	200	150.00	1,136.4	Ladder Peak
6	300	150.00	757.6	Ladder Peak
7	400	150.00	568.2	Ladder Peak
8	500	150.00	454.5	Ladder Peak
9	600	150.00	378.8	Ladder Peak
10	700	150.00	324.7	Ladder Peak
11	1,000	150.00	227.3	Ladder Peak
12	2,000	150.00	113.6	Ladder Peak
13	3,000	150.00	75.8	Ladder Peak
14	7,000	150.00	32.5	Ladder Peak
15	10,380	75.00	10.9	Upper Marker

Assay Class: High Sensitivity DNA Assay
 Data Path: C:\...ents and Settings\Bioanalyzer\2012-05-08\2012-05-08_007.xad

Created: 5/8/2012 4:27:40 PM
 Modified: 5/8/2012 5:10:03 PM

Electropherogram Summary Continued ...



Overall Results for sample 1 : Alb Soni 8Cycles 1:10

Number of peaks found: 18 Corr. Area 1: 1,934.5
 Noise: 0.2

Peak table for sample 1 : Alb Soni 8Cycles 1:10

Peak	Size [bp]	Conc. [pg/μl]	Molarity [pmol/l]	Observations
1	35	125.00	5,411.3	Lower Marker
2	89	71.08	1,214.3	
3	100	115.01	1,740.3	
4	160	45.06	425.7	
5	238	23.11	147.3	
6	253	20.50	122.9	
7	286	23.44	124.3	
8	313	33.46	162.1	
9	330	14.66	67.4	
10	348	26.90	117.2	
11	381	15.61	62.0	
12	392	12.32	47.6	
13	421	20.23	72.9	
14	442	7.60	26.0	
15	456	11.04	36.7	
16	473	18.40	59.0	
17	508	6.77	20.2	
18	521	7.55	22.0	
19	10,380	75.00	10.9	Upper Marker
20	12,083	0.00	0.0	

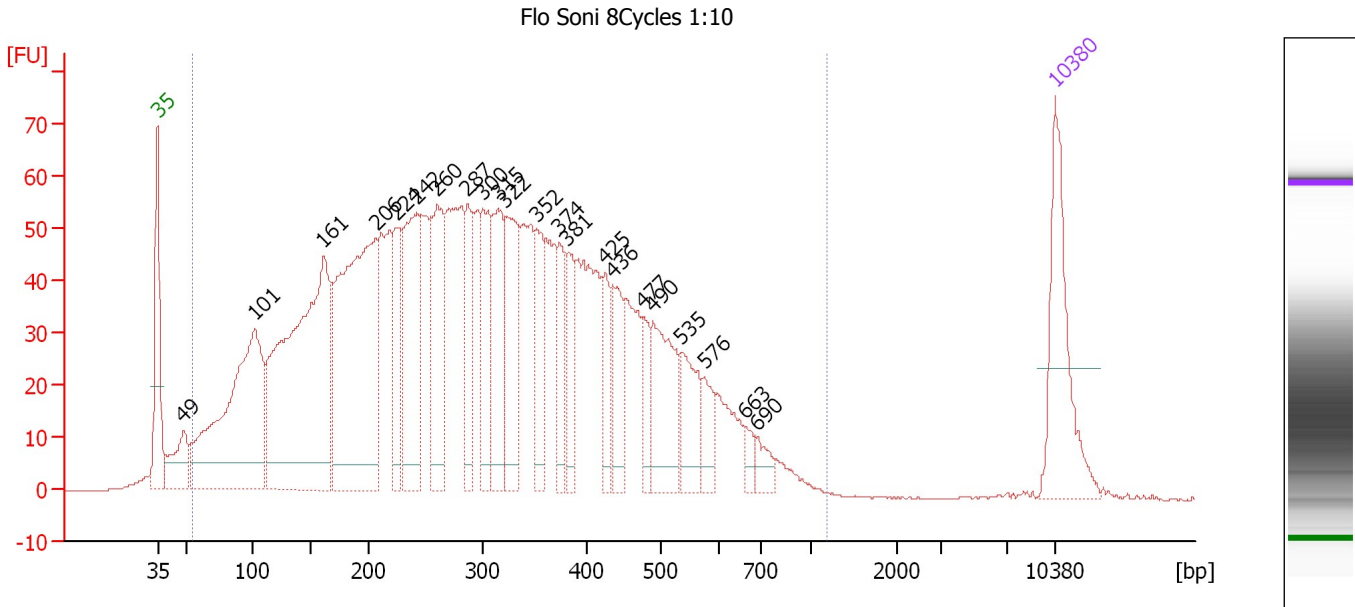
Region table for sample 1 : Alb Soni 8Cycles 1:10

From [bp]	Molarity [pmol/l]	Average Size [bp]	Conc. [pg/μl]	To [bp]	Corr. Area	% of Total	Size distribution in CV [%]	Color
73	22,992.3	299	2,955.50	1,174	1,934.5	93	50.6	Blue

Assay Class: High Sensitivity DNA Assay
 Data Path: C:\...ents and Settings\Bioanalyzer\2012-05-08\2012-05-08_007.xad

Created: 5/8/2012 4:27:40 PM
 Modified: 5/8/2012 5:10:03 PM

Electropherogram Summary Continued ...



Overall Results for sample 2 : Flo Soni 8Cycles 1:10

Number of peaks found: 22 Corr. Area 1: 2,595.7
 Noise: 0.1

Peak table for sample 2 : Flo Soni 8Cycles 1:10

Peak	Size [bp]	Conc. [pg/μl]	Molarity [pmol/l]	Observations
1	35	125.00	5,411.3	Lower Marker
2	49	52.38	1,631.5	
3	101	324.61	4,856.6	
4	161	424.84	4,008.3	
5	206	335.13	2,461.8	
6	224	62.16	421.1	
7	242	141.68	886.7	
8	260	115.85	675.1	
9	287	57.22	302.5	
10	300	79.73	402.8	
11	315	89.10	429.2	
12	322	97.03	456.8	
13	352	55.13	237.6	
14	374	43.35	175.9	
15	381	44.01	174.8	
16	425	34.88	124.2	
17	436	46.57	161.6	
18	477	26.97	85.7	
19	490	85.84	265.6	
20	535	49.59	140.5	
21	576	24.60	64.7	
22	663	11.34	25.9	
23	690	14.33	31.5	
24	10,380	75.00	10.9	Upper Marker


Assay Class: High Sensitivity DNA Assay
Data Path: C:\...ents and Settings\Bioanalyzer\2012-05-08\2012-05-08_007.xad

Created: 5/8/2012 4:27:40 PM
Modified: 5/8/2012 5:10:03 PM

Electropherogram Summary Continued ...

... Region table for sample 2 :

Flo Soni 8Cycles 1:10

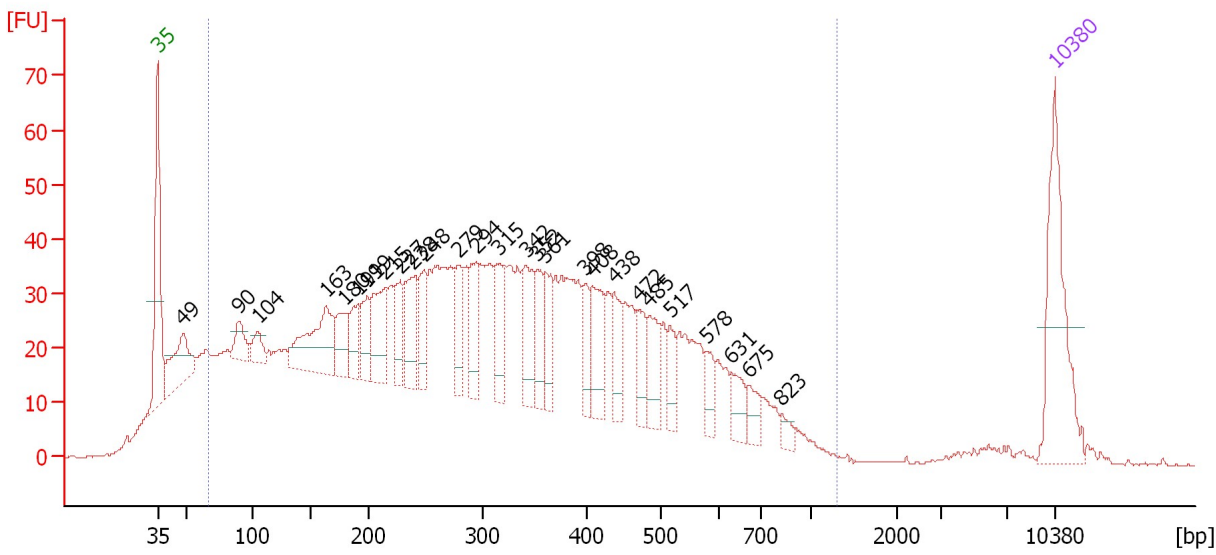
From [bp]	Molarity [pmol/l]	Average Size [bp]	Conc. [pg/μl]	To [bp]	Corr. Area	% of Total	Size distribution in CV [%]	Co lor
55	23,041.4	312	3,130.61	1,180	2,595.7	98	48.2	

Assay Class: High Sensitivity DNA Assay
 Data Path: C:\...ents and Settings\Bioanalyzer\2012-05-08\2012-05-08_007.xad

Created: 5/8/2012 4:27:40 PM
 Modified: 5/8/2012 5:10:03 PM

Electropherogram Summary Continued ...

Gri Soni 8Cycles 1:10



Overall Results for sample 3 : Gri Soni 8Cycles 1:10

Number of peaks found: 27 Corr. Area 1: 1,867.3
 Noise: 0.2

Peak table for sample 3 : Gri Soni 8Cycles 1:10

Peak	Size [bp]	Conc. [pg/μl]	Molarity [pmol/l]	Observations
1	35	125.00	5,411.3	Lower Marker
2	49	58.65	1,827.7	
3	90	23.60	398.4	
4	104	17.49	254.7	
5	163	80.92	751.6	
6	180	32.01	269.9	
7	191	25.42	202.1	
8	199	31.38	239.1	
9	215	52.89	373.6	
10	227	28.97	193.3	
11	238	49.53	315.3	
12	248	31.27	190.7	
13	279	34.63	188.2	
14	294	36.85	189.6	
15	315	40.46	194.5	
16	342	42.35	187.8	
17	352	32.81	141.0	
18	361	29.86	125.5	
19	398	22.92	87.3	
20	408	44.46	165.0	
21	438	27.32	94.6	
22	472	25.83	83.0	
23	485	29.90	93.3	
24	517	18.13	53.1	
25	578	15.47	40.5	
26	631	17.71	42.5	

Assay Class: High Sensitivity DNA Assay
 Data Path: C:\...ents and Settings\Bioanalyzer\2012-05-08\2012-05-08_007.xad


Created: 5/8/2012 4:27:40 PM
 Modified: 5/8/2012 5:10:03 PM

Electropherogram Summary Continued ...

... Peak table for sample 3 : Gri Soni 8Cycles 1:10

Peak	Size [bp]	Conc. [pg/μl]	Molarity [pmol/l]	Observations
27	675	13.84	31.1	
28	823	7.51	13.8	
29	10,380	75.00	10.9	Upper Marker

Region table for sample 3 : Gri Soni 8Cycles 1:10

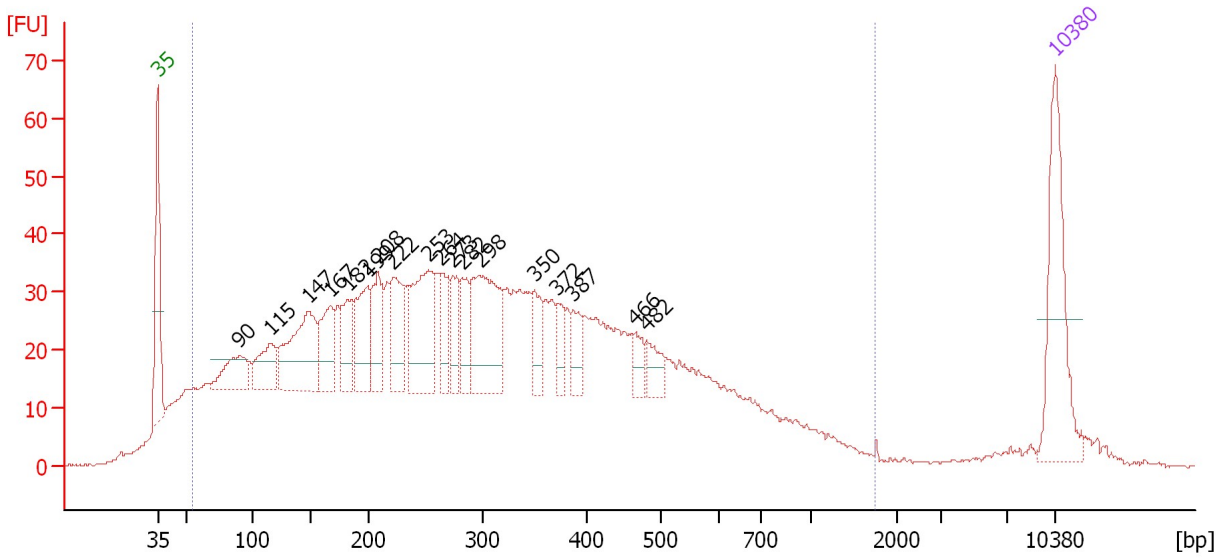
From [bp]	Molarity [pmol/l]	Average Size [bp]	Conc. [pg/μl]	To [bp]	Corr. Area	% of Total	Size distribution in CV [%]	Color
66	19,172.5	331	2,570.86	1,304	1,867.3	91	52.5	

Assay Class: High Sensitivity DNA Assay
 Data Path: C:\...ents and Settings\Bioanalyzer\2012-05-08\2012-05-08_007.xad

Created: 5/8/2012 4:27:40 PM
 Modified: 5/8/2012 5:10:03 PM

Electropherogram Summary Continued ...

Spa Soni 8Cycles 1:10



Overall Results for sample 4 : Spa Soni 8Cycles 1:10

Number of peaks found: 18 Corr. Area 1: 1,734.4
 Noise: 0.2

Peak table for sample 4 : Spa Soni 8Cycles 1:10

Peak	Size [bp]	Conc. [pg/μl]	Molarity [pmol/l]	Observations
1	35	125.00	5,411.3	Lower Marker
2	90	43.98	741.3	
3	115	43.86	577.3	
4	147	102.99	1,060.5	
5	167	52.46	476.8	
6	182	35.67	296.8	
7	199	61.43	467.6	
8	208	45.34	330.0	
9	222	53.61	366.6	
10	253	89.35	535.9	
11	264	31.02	178.1	
12	273	29.89	165.6	
13	282	30.92	166.4	
14	298	102.27	520.7	
15	350	25.93	112.3	
16	372	17.05	69.4	
17	387	20.92	81.9	
18	466	14.80	48.1	
19	482	19.66	61.8	
20	10,380	75.00	10.9	Upper Marker

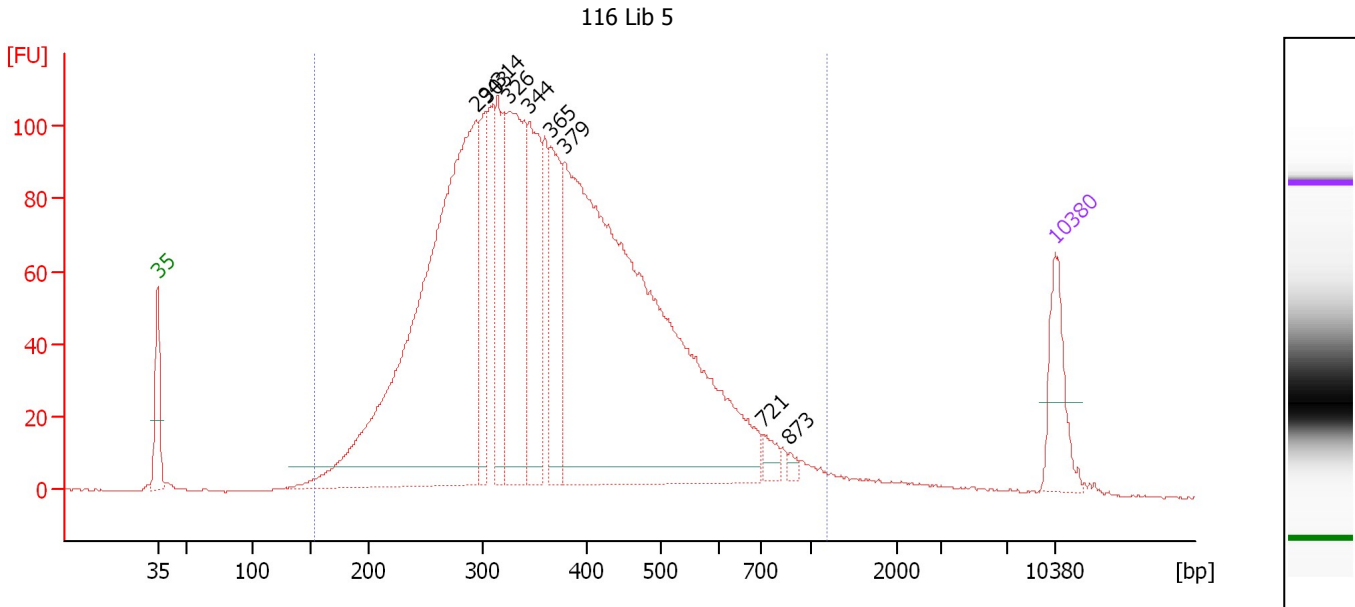
Region table for sample 4 : Spa Soni 8Cycles 1:10

From [bp]	Molarity [pmol/l]	Average Size [bp]	Conc. [pg/μl]	To [bp]	Corr. Area	% of Total	Size distribution in CV [%]	Color
55	20,217.5	334	2,563.90	1,735	1,734.4	94	64.9	Blue

Assay Class: High Sensitivity DNA Assay
 Data Path: C:\...ents and Settings\Bioanalyzer\2012-05-08\2012-05-08_007.xad

Created: 5/8/2012 4:27:40 PM
 Modified: 5/8/2012 5:10:03 PM

Electropherogram Summary Continued ...



Overall Results for sample 5 : 116 Lib 5

Number of peaks found: 9 Corr. Area 1: 2,873.9
 Noise: 0.2

Peak table for sample 5 : 116 Lib 5

Peak	Size [bp]	Conc. [pg/μl]	Molarity [pmol/l]	Observations
1	35	125.00	5,411.3	Lower Marker
2	294	1,191.64	6,138.7	
3	303	139.92	699.4	
4	314	181.41	874.1	
5	326	345.28	1,605.6	
6	344	213.89	941.1	
7	365	165.64	687.1	
8	379	1,376.00	5,500.8	
9	721	20.98	44.1	
10	873	7.94	13.8	
11	10,380	75.00	10.9	Upper Marker

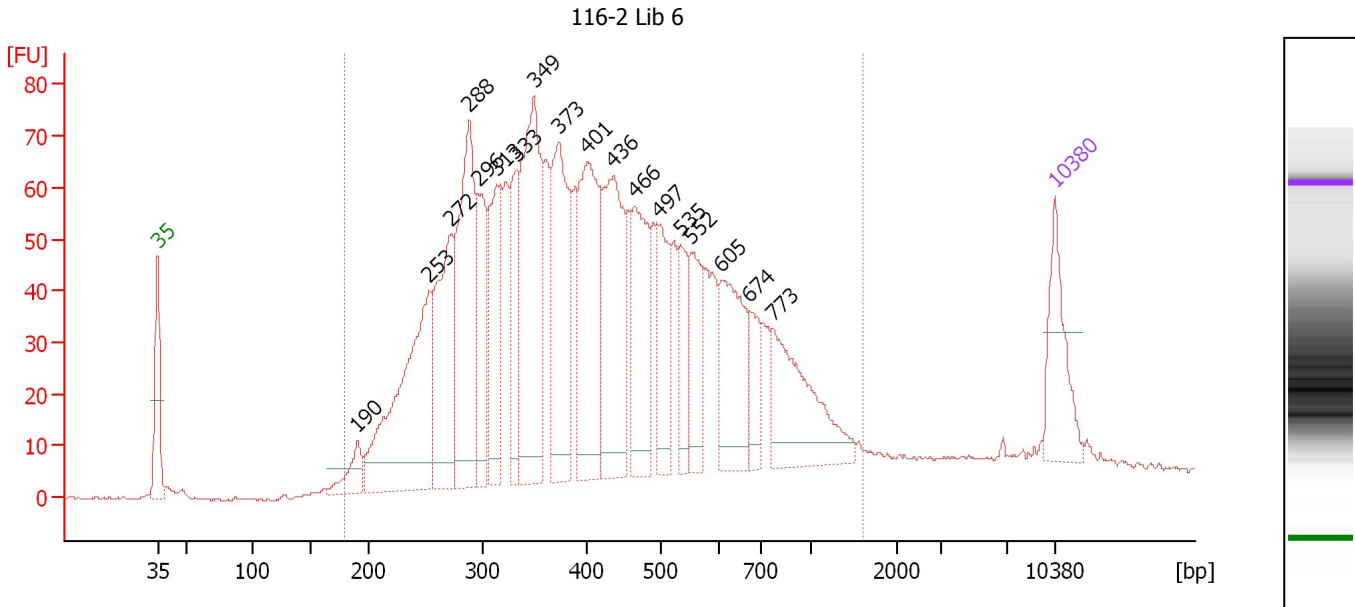
Region table for sample 5 : 116 Lib 5

From [bp]	Molarity [pmol/l]	Average Size [bp]	Conc. [pg/μl]	To [bp]	Corr. Area	% of Total	Size distribution in CV [%]	Color
153	18,602.7	383	4,070.15	1,188	2,873.9	98	35.3	Blue

Assay Class: High Sensitivity DNA Assay
 Data Path: C:\...ents and Settings\Bioanalyzer\2012-05-08\2012-05-08_007.xad

Created: 5/8/2012 4:27:40 PM
 Modified: 5/8/2012 5:10:03 PM

Electropherogram Summary Continued ...



Overall Results for sample 6 : 116-2 Lib 6

Number of peaks found: 18 Corr. Area 1: 2,150.0
 Noise: 0.3

Peak table for sample 6 : 116-2 Lib 6

Peak	Size [bp]	Conc. [pg/μl]	Molarity [pmol/l]	Observations
1	35	125.00	5,411.3	Lower Marker
2	190	46.98	374.2	
3	253	346.46	2,075.0	
4	272	211.56	1,177.3	
5	288	287.87	1,513.0	
6	296	121.14	620.1	
7	313	161.47	781.3	
8	333	96.30	438.8	
9	349	310.60	1,346.7	
10	373	214.12	869.6	
11	401	238.49	900.5	
12	436	235.68	818.3	
13	466	153.39	499.3	
14	497	96.70	294.7	
15	535	65.08	184.3	
16	552	87.22	239.3	
17	605	138.33	346.4	
18	674	48.61	109.3	
19	773	162.80	319.3	
20	10,380	75.00	10.9	Upper Marker

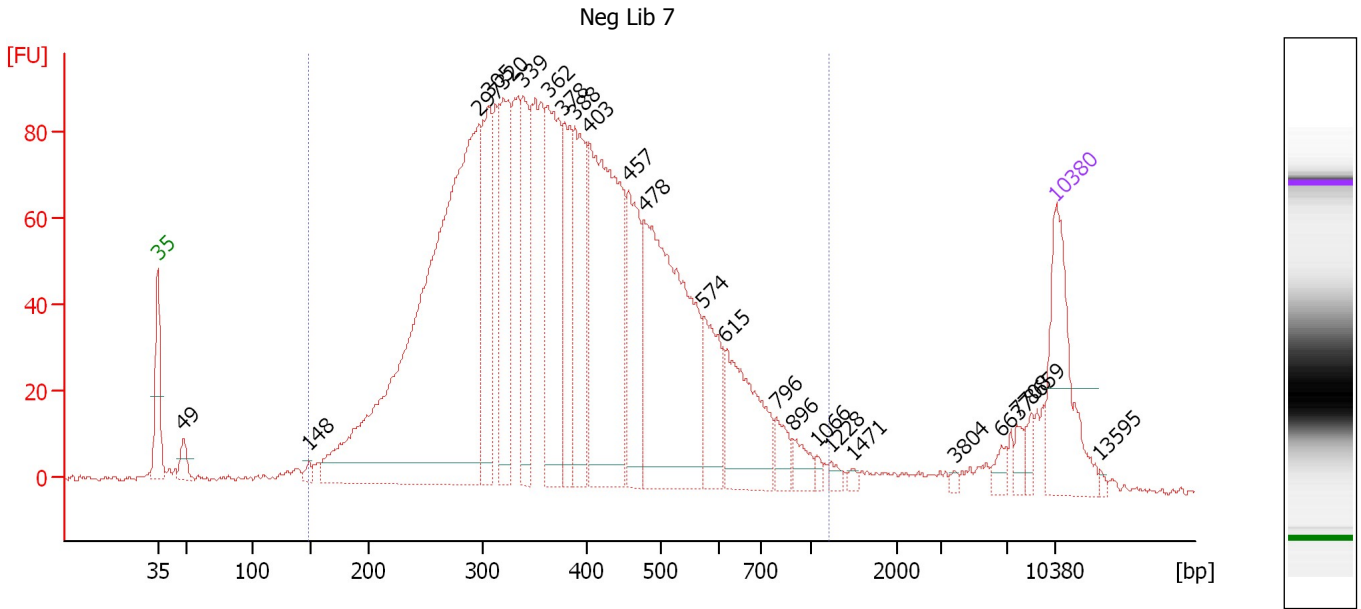
Region table for sample 6 : 116-2 Lib 6

From [bp]	Molarity [pmol/l]	Average Size [bp]	Conc. [pg/μl]	To [bp]	Corr. Area	% of Total	Size distribution in CV [%]	Color
179	15,290.0	455	3,710.06	1,596	2,150.0	95	46.4	Blue

Assay Class: High Sensitivity DNA Assay
 Data Path: C:\...ents and Settings\Bioanalyzer\2012-05-08\2012-05-08_007.xad

Created: 5/8/2012 4:27:40 PM
 Modified: 5/8/2012 5:10:03 PM

Electropherogram Summary Continued ...



Overall Results for sample 7 : Neg Lib 7

Number of peaks found: 24 Corr. Area 1: 2,595.2
 Noise: 0.7

Peak table for sample 7 : Neg Lib 7

Peak	Size [bp]	Conc. [pg/μl]	Molarity [pmol/l]	Observations
1	35	125.00	5,411.3	Lower Marker
2	49	17.21	537.7	
3	148	6.67	68.3	
4	297	697.08	3,559.2	
5	305	123.19	612.0	
6	320	130.28	617.5	
7	339	93.70	419.2	
8	362	154.32	645.1	
9	378	80.09	321.2	
10	388	117.04	456.9	
11	403	259.69	976.0	
12	457	95.49	316.7	
13	478	280.97	889.7	
14	574	62.80	165.8	
15	615	91.92	226.5	
16	796	19.05	36.3	
17	896	14.38	24.3	
18	1,066	4.56	6.5	
19	1,228	5.68	7.0	
20	1,471	3.29	3.4	
21	3,804	2.21	0.9	
22	6,637	7.45	1.7	
23	7,708	8.25	1.6	
24	8,659	7.94	1.4	
25	10,380	75.00	10.9	Upper Marker
26	13,595	0.00	0.0	


Assay Class: High Sensitivity DNA Assay
Data Path: C:\...ents and Settings\Bioanalyzer\2012-05-08\2012-05-08_007.xad

Created: 5/8/2012 4:27:40 PM
Modified: 5/8/2012 5:10:03 PM

Electropherogram Summary Continued ...

... Region table for sample 7 :

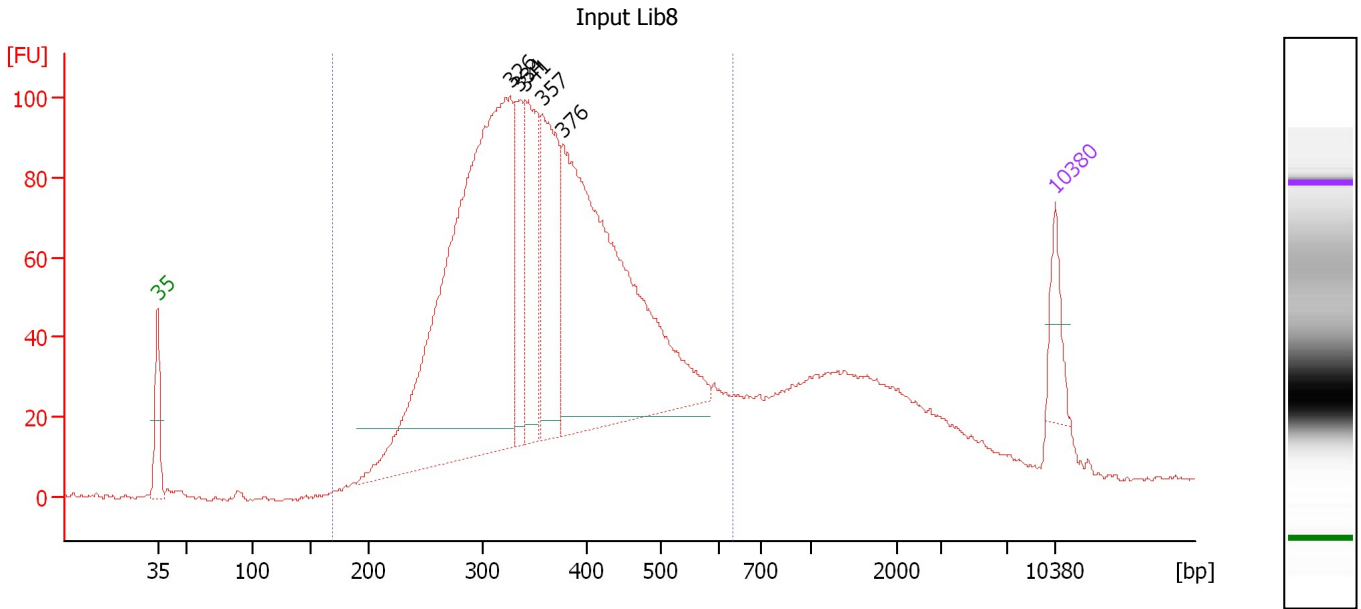
Neg Lib 7

From [bp]	Molarity [pmol/l]	Average Size [bp]	Conc. [pg/μl]	To [bp]	Corr. Area	% of Total	Size distribution in CV [%]	Co lor
148	11,520.2	398	2,594.54	1,198	2,595.2	94	35.5	

Assay Class: High Sensitivity DNA Assay
 Data Path: C:\...ents and Settings\Bioanalyzer\2012-05-08\2012-05-08_007.xad

Created: 5/8/2012 4:27:40 PM
 Modified: 5/8/2012 5:10:03 PM

Electropherogram Summary Continued ...



Overall Results for sample 8 : Input Lib8

Number of peaks found: 5 Corr. Area 1: 2,220.4
 Noise: 0.5

Peak table for sample 8 : Input Lib8

Peak	Size [bp]	Conc. [pg/μl]	Molarity [pmol/l]	Observations
1	35	125.00	5,411.3	Lower Marker
2	326	1,859.67	8,646.0	
3	334	240.18	1,088.0	
4	341	329.91	1,464.9	
5	357	398.28	1,689.6	
6	376	1,291.08	5,200.5	
7	10,380	75.00	10.9	Upper Marker

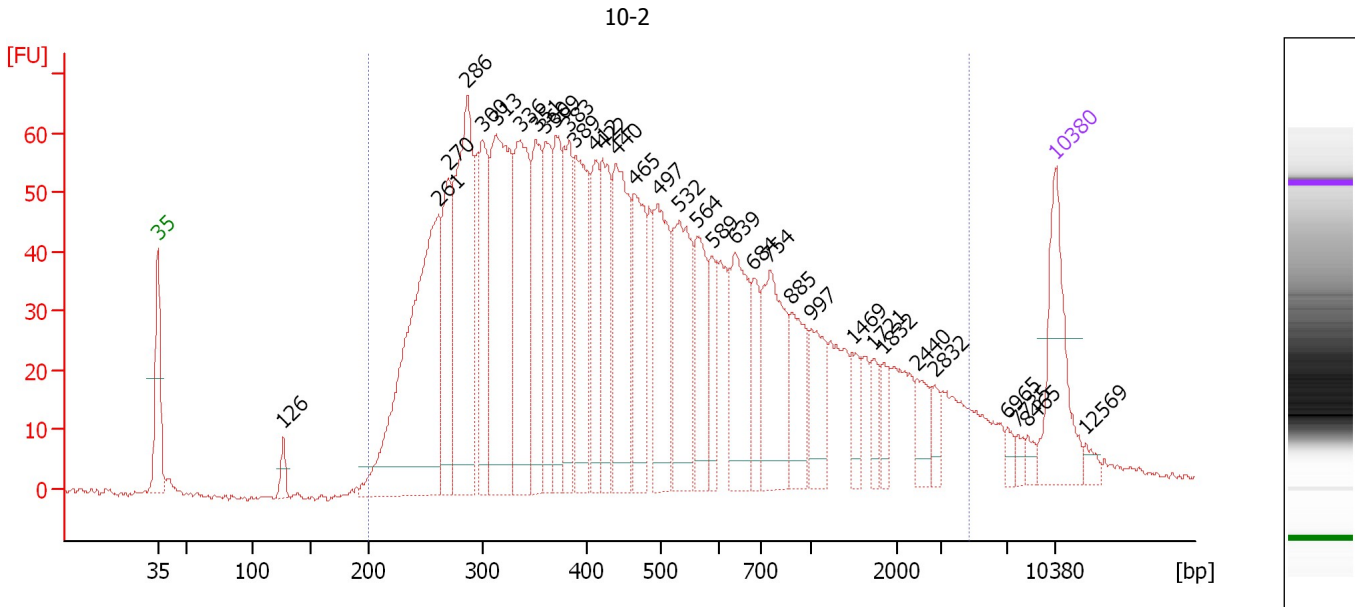
Region table for sample 8 : Input Lib8

From [bp]	Molarity [pmol/l]	Average Size [bp]	Conc. [pg/μl]	To [bp]	Corr. Area	% of Total	Size distribution in CV [%]	Color
169	24,325.3	371	5,487.27	635	2,220.4	79	24.7	Blue

Assay Class: High Sensitivity DNA Assay
 Data Path: C:\...ents and Settings\Bioanalyzer\2012-05-08\2012-05-08_007.xad

Created: 5/8/2012 4:27:40 PM
 Modified: 5/8/2012 5:10:03 PM

Electropherogram Summary Continued ...



Overall Results for sample 9 : 10-2

Number of peaks found: 34 Corr. Area 1: 2,216.0
 Noise: 0.5

Peak table for sample 9 : 10-2

Peak	Size [bp]	Conc. [pg/μl]	Molarity [pmol/l]	Observations
1	35	125.00	5,411.3	Lower Marker
2	126	16.41	197.6	
3	261	360.77	2,093.0	
4	270	121.91	683.7	
5	286	242.85	1,284.7	
6	300	116.38	588.0	
7	313	253.69	1,226.4	
8	336	169.66	766.0	
9	351	109.15	471.2	
10	360	83.73	352.2	
11	369	100.24	411.1	
12	383	84.36	333.7	
13	389	126.85	493.9	
14	412	71.28	262.3	
15	422	90.46	324.6	
16	440	142.88	491.5	
17	465	99.71	325.0	
18	497	108.34	330.2	
19	532	119.51	340.1	
20	564	74.58	200.3	
21	589	38.51	99.1	
22	639	89.87	213.2	
23	684	39.33	87.1	
24	754	106.03	212.9	
25	885	55.78	95.5	
26	997	46.24	70.3	

Assay Class: High Sensitivity DNA Assay
 Data Path: C:\...ents and Settings\Bioanalyzer\2012-05-08\2012-05-08_007.xad


Created: 5/8/2012 4:27:40 PM
 Modified: 5/8/2012 5:10:03 PM

Electropherogram Summary Continued ...

... Peak table for sample 9 : 10-2

Peak	Size [bp]	Conc. [pg/μl]	Molarity [pmol/l]	Observations
27	1,469	20.79	21.4	
28	1,721	16.45	14.5	
29	1,832	16.75	13.9	
30	2,440	21.94	13.6	
31	2,832	12.76	6.8	
32	6,965	7.34	1.6	
33	7,735	5.21	1.0	
34	8,465	6.51	1.2	
35	10,380	75.00	10.9	Upper Marker
36	12,569	0.00	0.0	

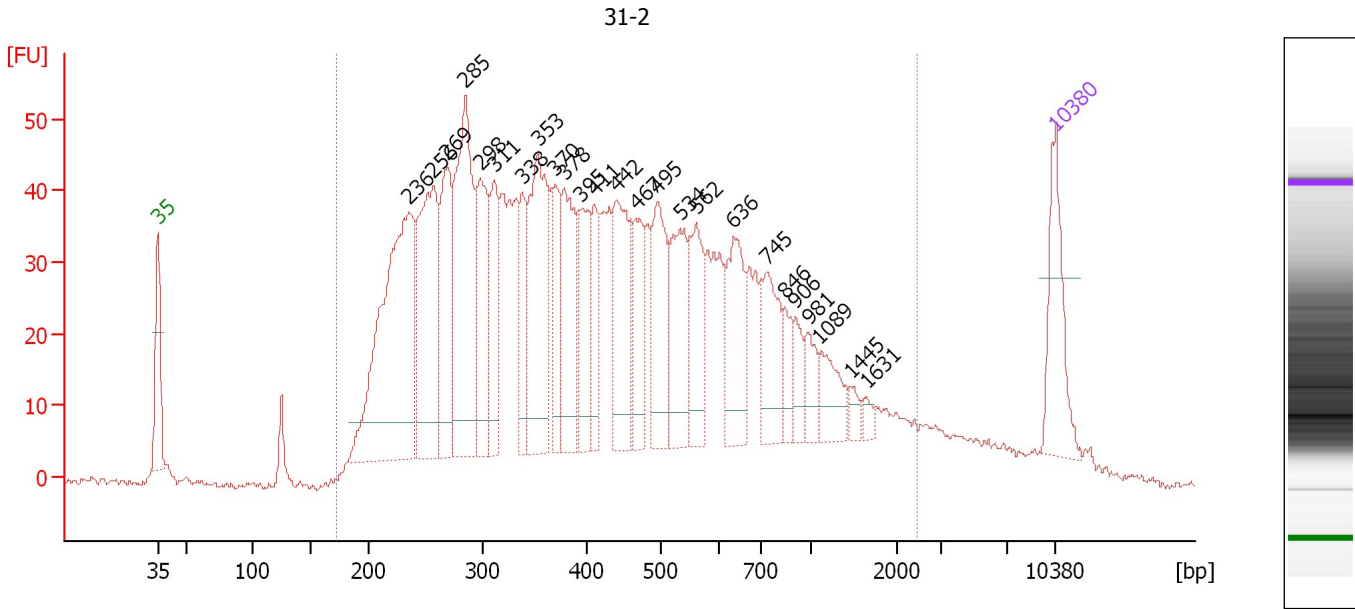
Region table for sample 9 : 10-2

From [bp]	Molarity [pmol/l]	Average Size [bp]	Conc. [pg/μl]	To [bp]	Corr. Area	% of Total	Size distribution in CV [%]	Color
200	12,364.5	662	3,225.79	4,620	2,216.0	96	98.6	

Assay Class: High Sensitivity DNA Assay
 Data Path: C:\...ents and Settings\Bioanalyzer\2012-05-08\2012-05-08_007.xad

Created: 5/8/2012 4:27:40 PM
 Modified: 5/8/2012 5:10:03 PM

Electropherogram Summary Continued ...



Overall Results for sample 10 : 31-2

Number of peaks found: 25 Corr. Area 1: 1,780.0
 Noise: 0.6

Peak table for sample 10 : 31-2

Peak	Size [bp]	Conc. [pg/μl]	Molarity [pmol/l]	Observations
1	35	125.00	5,411.3	Lower Marker
2	236	414.01	2,662.7	
3	256	246.88	1,458.8	
4	269	143.44	808.5	
5	285	279.44	1,487.8	
6	298	123.75	629.0	
7	311	93.47	455.5	
8	338	73.21	328.1	
9	353	203.64	874.3	
10	370	75.47	309.4	
11	378	120.71	483.5	
12	395	88.48	339.4	
13	411	59.53	219.3	
14	442	124.56	427.1	
15	467	74.40	241.3	
16	495	113.53	347.4	
17	534	103.41	293.1	
18	562	84.81	228.7	
19	636	96.81	230.6	
20	745	82.47	167.8	
21	846	27.40	49.1	
22	906	26.90	45.0	
23	981	29.01	44.8	
24	1,089	41.67	58.0	
25	1,445	9.92	10.4	
26	1,631	8.29	7.7	


Assay Class: High Sensitivity DNA Assay
Data Path: C:\...ents and Settings\Bioanalyzer\2012-05-08\2012-05-08_007.xad

Created: 5/8/2012 4:27:40 PM
Modified: 5/8/2012 5:10:03 PM

Electropherogram Summary Continued ...**... Peak table for sample 10 : 31-2**

Peak	Size [bp]	Conc. [pg/ μ l]	Molarity [pmol/l]	Observations
27	10,380	75.00	10.9	Upper Marker

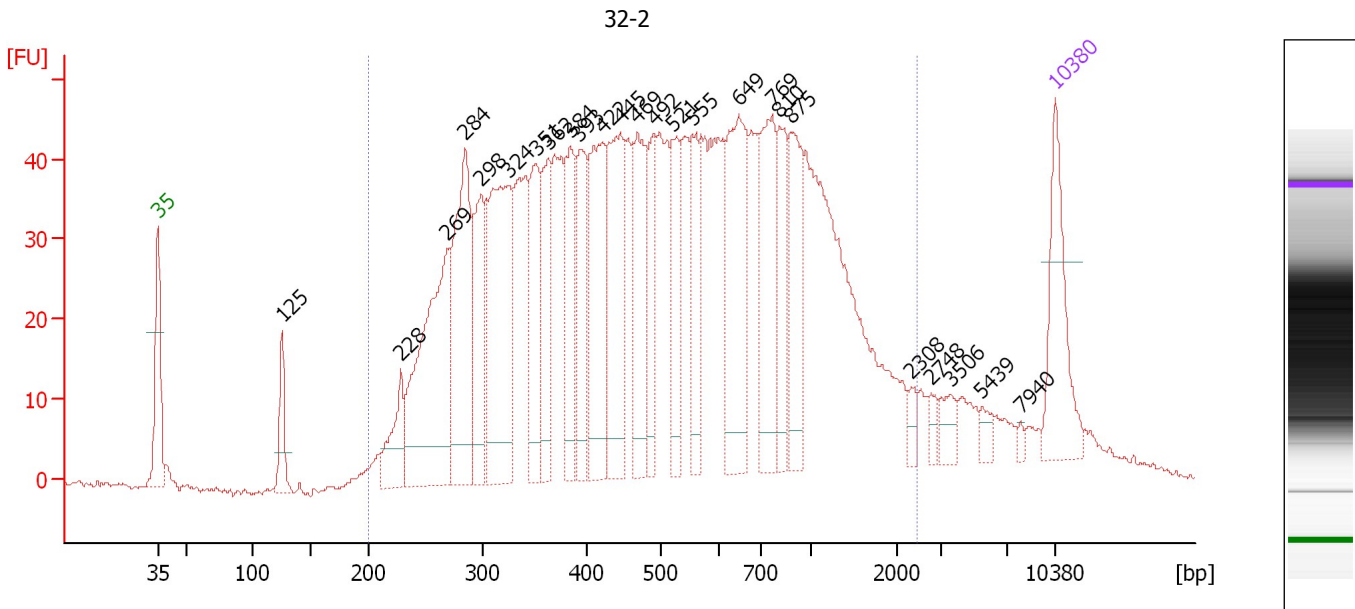
Region table for sample 10 : 31-2

From [bp]	Molarity [pmol/l]	Average Size [bp]	Conc. [pg/ μ l]	To [bp]	Corr. Area	% of Total	Size distribution in CV [%]	Color
172	16,510.5	521	3,920.82	2,457	1,780.0	94	70.3	

Assay Class: High Sensitivity DNA Assay
 Data Path: C:\...ents and Settings\Bioanalyzer\2012-05-08\2012-05-08_007.xad

Created: 5/8/2012 4:27:40 PM
 Modified: 5/8/2012 5:10:03 PM

Electropherogram Summary Continued ...



Overall Results for sample 11 : 32-2

Number of peaks found: 25 Corr. Area 1: 1,793.8
 Noise: 0.4

Peak table for sample 11 : 32-2

Peak	Size [bp]	Conc. [pg/μl]	Molarity [pmol/l]	Observations
1	35	125.00	5,411.3	Lower Marker
2	125	46.97	571.3	
3	228	58.29	387.7	
4	269	250.28	1,412.0	
5	284	199.89	1,064.8	
6	298	106.71	542.5	
7	324	215.44	1,007.7	
8	351	99.23	428.0	
9	362	81.90	342.3	
10	384	85.93	338.8	
11	393	89.42	344.8	
12	422	144.44	519.0	
13	445	145.10	493.5	
14	469	96.12	310.4	
15	492	64.60	198.9	
16	521	71.75	208.7	
17	555	73.00	199.3	
18	649	149.88	350.0	
19	769	111.12	218.9	
20	810	65.48	122.4	
21	875	88.41	153.2	
22	2,308	10.18	6.7	
23	2,748	8.44	4.7	
24	3,506	15.65	6.8	
25	5,439	8.92	2.5	
26	7,940	3.80	0.7	


Assay Class: High Sensitivity DNA Assay
Data Path: C:\...ents and Settings\Bioanalyzer\2012-05-08\2012-05-08_007.xad

Created: 5/8/2012 4:27:40 PM
Modified: 5/8/2012 5:10:03 PM

Electropherogram Summary Continued ...**... Peak table for sample 11 : 32-2**

Peak	Size [bp]	Conc. [pg/μl]	Molarity [pmol/l]	Observations
27	10,380	75.00	10.9	Upper Marker

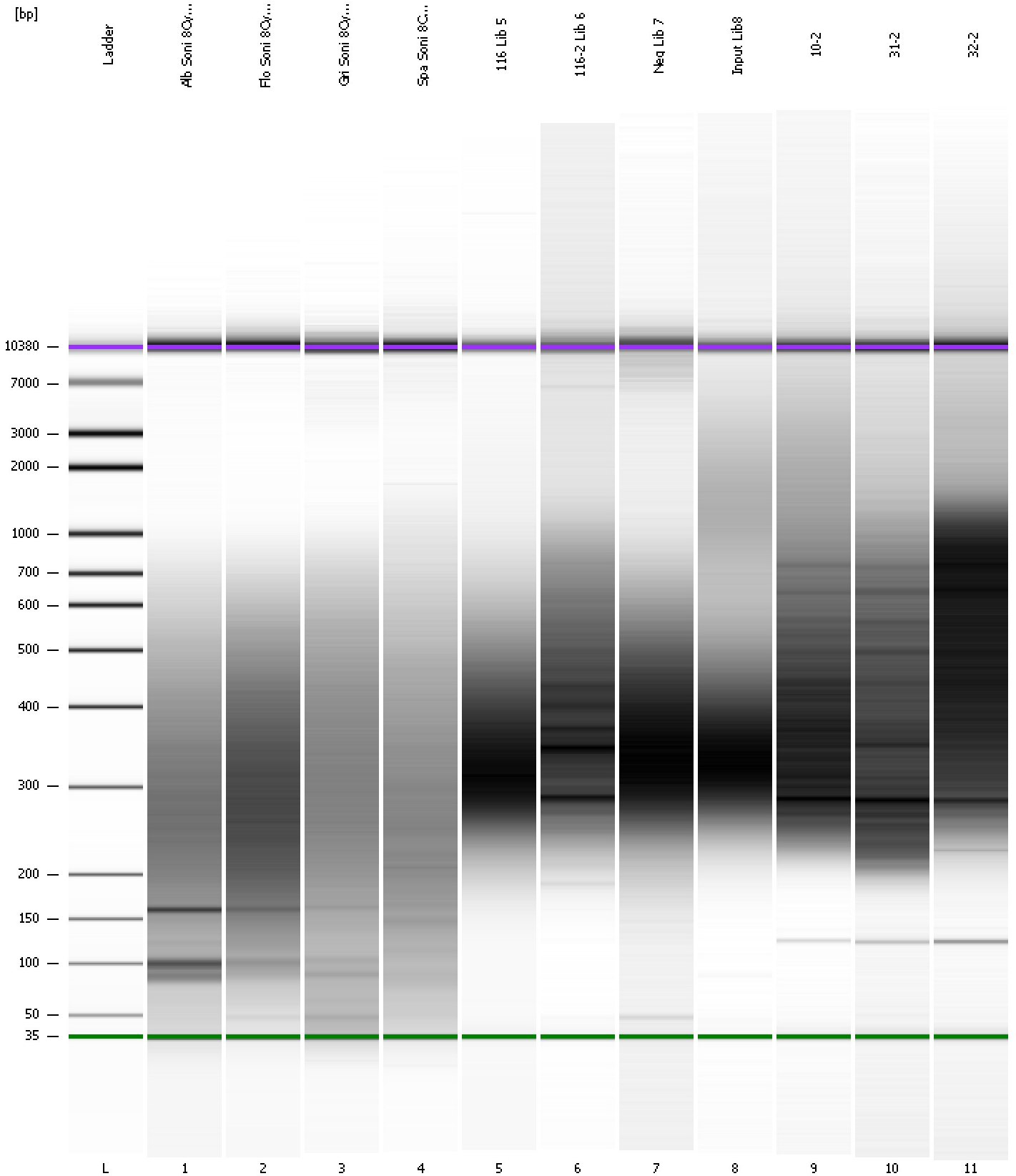
Region table for sample 11 : 32-2

From [bp]	Molarity [pmol/l]	Average Size [bp]	Conc. [pg/μl]	To [bp]	Corr. Area	% of Total	Size distribution in CV [%]	Color
200	12,239.5	623	3,485.88	2,439	1,793.8	92	64.2	

Assay Class: High Sensitivity DNA Assay
Data Path: C:\...ents and Settings\Bioanalyzer\2012-05-08\2012-05-08_007.xad

Created: 5/8/2012 4:27:40 PM
Modified: 5/8/2012 5:10:03 PM

Gel Image



Assay Class: High Sensitivity DNA Assay Created: 5/8/2012 4:27:40 PM
 Data Path: C:\...ents and Settings\Bioanalyzer\2012-05-08\2012-05-08_007.xad Modified: 5/8/2012 5:10:03 PM

Run Logbook

Description	Number	Source	Category	Sub Category	Time	Time Zone	User	Host
Run ended on port 1 (Number of wells acquired: 12)		Instrument	Run		5/8/2012 5:08:59 PM	(GMT --07:00) Pacific Standard Time	UC Davis	D8XSMGH1
Run started on port 1 (File: C:\Documents and Settings\Bioanalyzer\2012-05-08\2012-05-08_007.xad)		Instrument	Run		5/8/2012 4:27:46 PM	(GMT --07:00) Pacific Standard Time	UC Davis	D8XSMGH1
Product Number : G2938B		Instrument	Run		5/8/2012 4:27:46 PM	(GMT --07:00) Pacific Standard Time	UC Davis	D8XSMGH1
Name :		Instrument	Run		5/8/2012 4:27:46 PM	(GMT --07:00) Pacific Standard Time	UC Davis	D8XSMGH1
Vendor : Agilent Technologies		Instrument	Run		5/8/2012 4:27:46 PM	(GMT --07:00) Pacific Standard Time	UC Davis	D8XSMGH1
Serial# : DE13701086		Instrument	Run		5/8/2012 4:27:46 PM	(GMT --07:00) Pacific Standard Time	UC Davis	D8XSMGH1
Firmware : C.01.069		Instrument	Run		5/8/2012 4:27:46 PM	(GMT --07:00) Pacific Standard Time	UC Davis	D8XSMGH1
Cartridge : Electrode		Instrument	Run		5/8/2012 4:27:46 PM	(GMT --07:00) Pacific Standard Time	UC Davis	D8XSMGH1