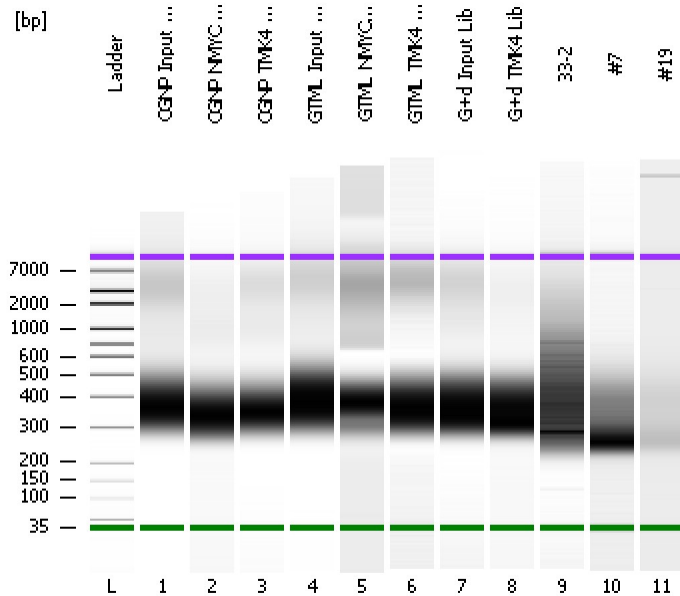


Assay Class: High Sensitivity DNA Assay  
Data Path: C:\...ents and Settings\Bioanalyzer\2012-05-09\2012-05-09\_002.xad

Created: 5/9/2012 1:41:20 PM  
Modified: 5/9/2012 2:36:36 PM

**Electrophoresis File Run Summary**



Instrument Information:

Instrument Name: DE13701086      Firmware: C.01.069  
Serial#: DE13701086      Type: G2938B

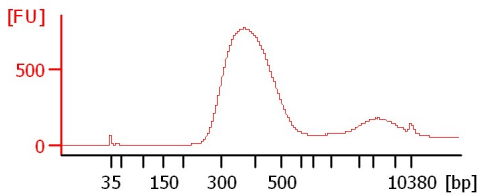
Assay Information:

Assay Origin Path: C:\Program Files\Agilent\2100 bioanalyzer\2100 expert\assays\dsDNA\High Sensitivity DNA.xsy  
Assay Class: High Sensitivity DNA Assay  
Version: 1.03  
Assay Comments: Copyright © 2003-2010 Agilent Technologies

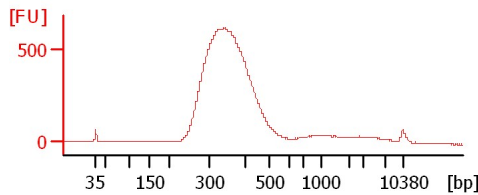
Chip Information:

Chip Lot #:   
Reagent Kit Lot #:   
Chip Comments:

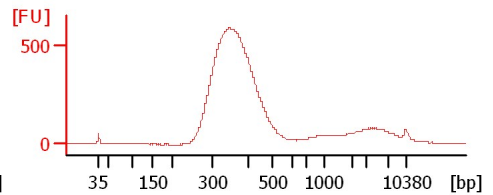
**CGNP Input Lib**



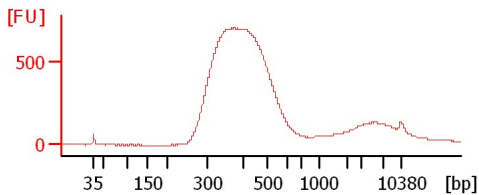
**CGNP NMYC Lib**



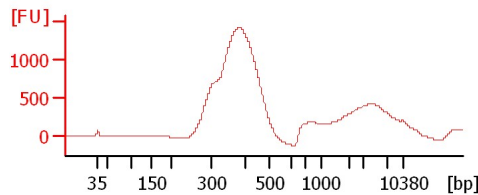
**CGNP TMK4 Lib**



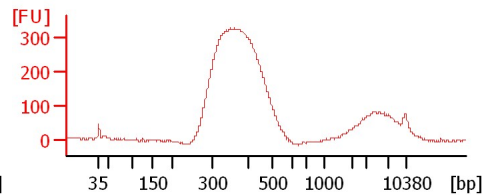
**GTML Input Lib**



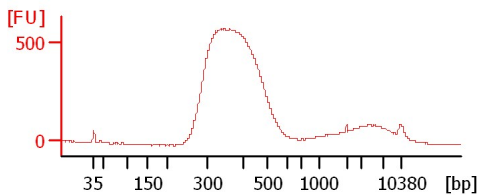
**GTML NMYC Lib**



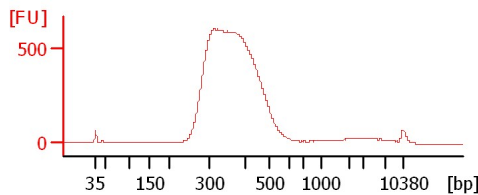
**GTML TMK4 Lib**



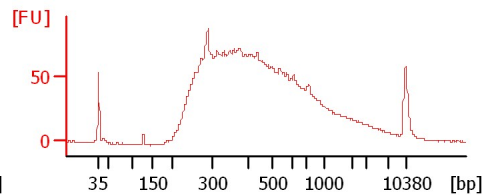
**G+d Input Lib**



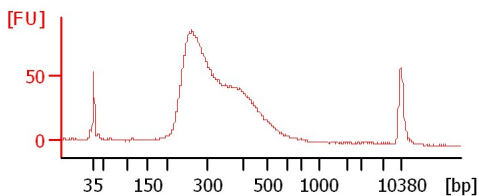
**G+d TMK4 Lib**



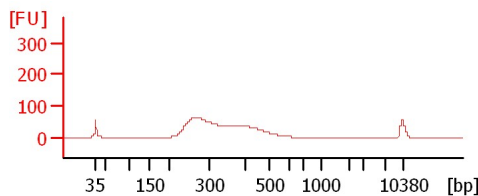
**33-2**



**#7**



**#19**



Assay Class: High Sensitivity DNA Assay  
Data Path: C:\...ents and Settings\Bioanalyzer\2012-05-09\2012-05-09\_002.xad

Created: 5/9/2012 1:41:20 PM  
Modified: 5/9/2012 2:36:36 PM

**Electrophoresis File Run Summary (Chip Summary)**

Sample Name	Sample Comment	Rest. Digest	Status	Observation	Result Label	Result Color
CGNP Input Lib		<input type="checkbox"/>	✓			
CGNP NMYC Lib		<input type="checkbox"/>	✓			
CGNP TMK4 Lib		<input type="checkbox"/>	✓			
GTML Input Lib		<input type="checkbox"/>	✓			
GTML NMYC Lib		<input type="checkbox"/>	✓			
GTML TMK4 Lib		<input type="checkbox"/>	✓			
G+d Input Lib		<input type="checkbox"/>	✓			
G+d TMK4 Lib		<input type="checkbox"/>	✓			
33-2		<input type="checkbox"/>	✓			
#7		<input type="checkbox"/>	✓			
#19		<input type="checkbox"/>	✓			
Ladder		<input type="checkbox"/>	✓			

**Chip Lot #**

**Reagent Kit Lot #**

**Chip Comments :**

Assay Class: High Sensitivity DNA Assay  
Data Path: C:\...ents and Settings\Bioanalyzer\2012-05-09\2012-05-09\_002.xad

Created: 5/9/2012 1:41:20 PM  
Modified: 5/9/2012 2:36:36 PM

**Electrophoresis Assay Details**

**General Analysis Settings**

Number of Available Sample and Ladder Wells (Max.) : 12  
Minimum Visible Range [s] : 32  
Maximum Visible Range [s] : 138  
Start Analysis Time Range [s] : 33  
End Analysis Time Range [s] : 137.5  
Ladder Concentration [pg/μl] : 1950  
Uses Standard Area for Ladder Fragments  
Lower Marker Concentration [pg/μl] : 125  
Upper Marker Concentration [pg/μl] : 75  
Used Upper Marker for Quantitation  
Standard Curve Fit is Point to Point  
Show Data Aligned to Lower and Upper Marker

**Integrator Settings**

Integration Start Time [s] : 33.05  
Integration End Time [s] : 137  
Slope Threshold : 0.8  
Height Threshold [FU] : 5  
Area Threshold : 0.1  
Width Threshold [s] : 0.6  
Baseline Plateau [s] : 0.5

**Filter Settings**

Filter Width [s] : 0.5  
Polynomial Order : 4

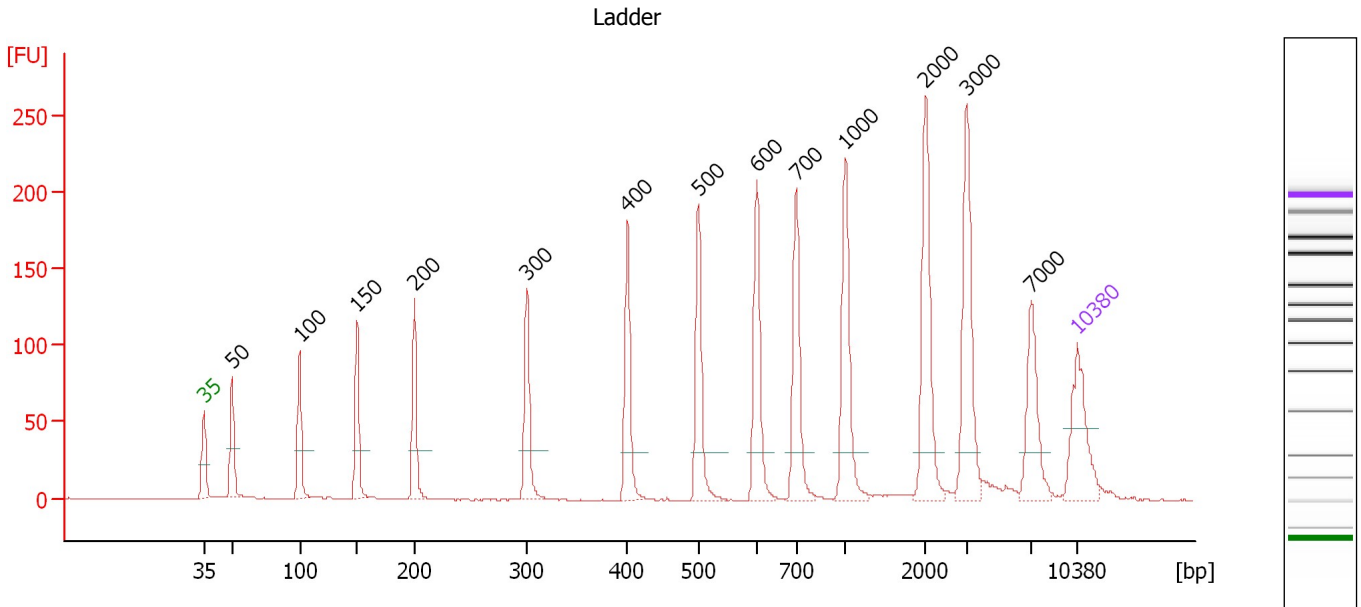
**Ladder**

Ladder Peak	Size	Area
1	35	160
2	50	210
3	100	208
4	150	221
5	200	242
6	300	270
7	400	305
8	500	306
9	600	336
10	700	321
11	1000	366
12	2000	413
13	3000	411
14	7000	400
15	10380	214

Assay Class: High Sensitivity DNA Assay  
 Data Path: C:\...ents and Settings\Bioanalyzer\2012-05-09\2012-05-09\_002.xad

Created: 5/9/2012 1:41:20 PM  
 Modified: 5/9/2012 2:36:36 PM

**Electropherogram Summary**



**Overall Results for Ladder**

Noise: 0.2

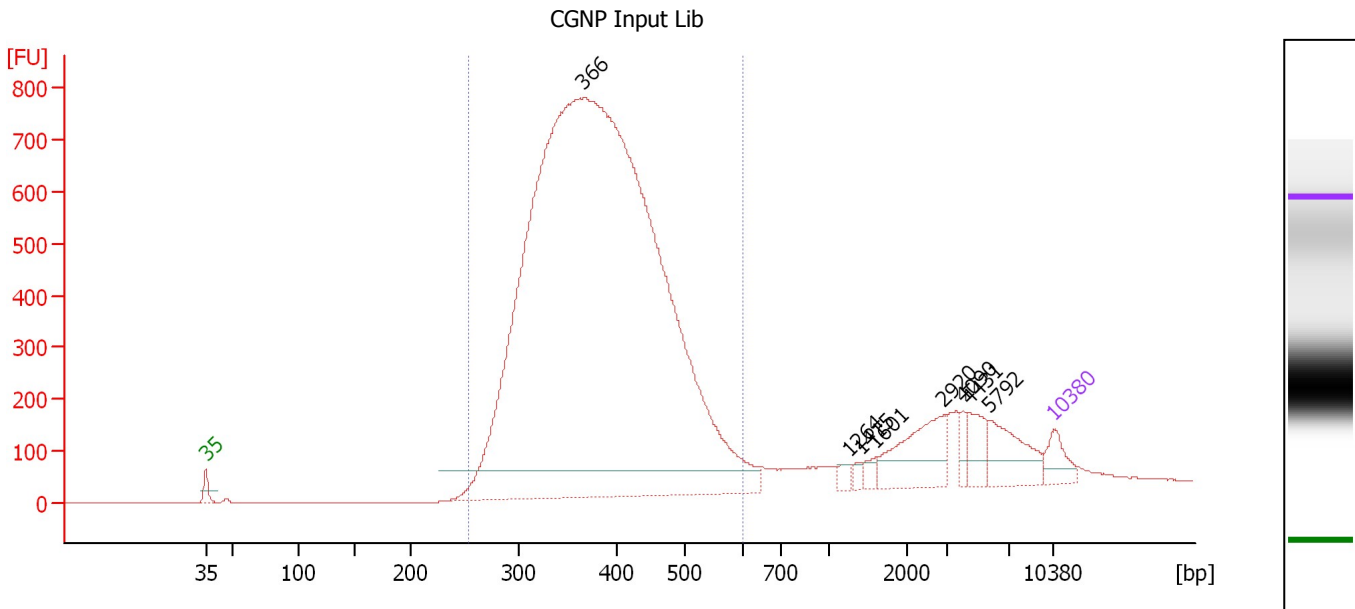
**Peak table for Ladder**

Peak	Size [bp]	Conc. [pg/μl]	Molarity [pmol/l]	Observations
1	35	125.00	5,411.3	Lower Marker
2	50	150.00	4,545.5	Ladder Peak
3	100	150.00	2,272.7	Ladder Peak
4	150	150.00	1,515.2	Ladder Peak
5	200	150.00	1,136.4	Ladder Peak
6	300	150.00	757.6	Ladder Peak
7	400	150.00	568.2	Ladder Peak
8	500	150.00	454.5	Ladder Peak
9	600	150.00	378.8	Ladder Peak
10	700	150.00	324.7	Ladder Peak
11	1,000	150.00	227.3	Ladder Peak
12	2,000	150.00	113.6	Ladder Peak
13	3,000	150.00	75.8	Ladder Peak
14	7,000	150.00	32.5	Ladder Peak
15	10,380	75.00	10.9	Upper Marker

Assay Class: High Sensitivity DNA Assay  
 Data Path: C:\...ents and Settings\Bioanalyzer\2012-05-09\2012-05-09\_002.xad

Created: 5/9/2012 1:41:20 PM  
 Modified: 5/9/2012 2:36:36 PM

**Electropherogram Summary Continued ...**



**Setpoint Deviations for sample 1 : CGNP Input Lib**

Height Threshold [FU] : 50

**Overall Results for sample 1 : CGNP Input Lib**

Number of peaks found: 8                                  Corr. Area 1: 13,555.6  
 Noise: 0.2

**Peak table for sample 1 : CGNP Input Lib**

Peak	Size [bp]	Conc. [pg/μl]	Molarity [pmol/l]	Observations
1	35	125.00	5,411.3	Lower Marker
2	366	9,023.54	37,362.6	
3	1,264	28.27	33.9	
4	1,415	24.48	26.2	
5	1,601	30.01	28.4	
6	2,920	264.65	137.3	
7	4,090	36.83	13.6	
8	4,431	107.10	36.6	
9	5,792	187.55	49.1	
10	10,380	75.00	10.9	Upper Marker

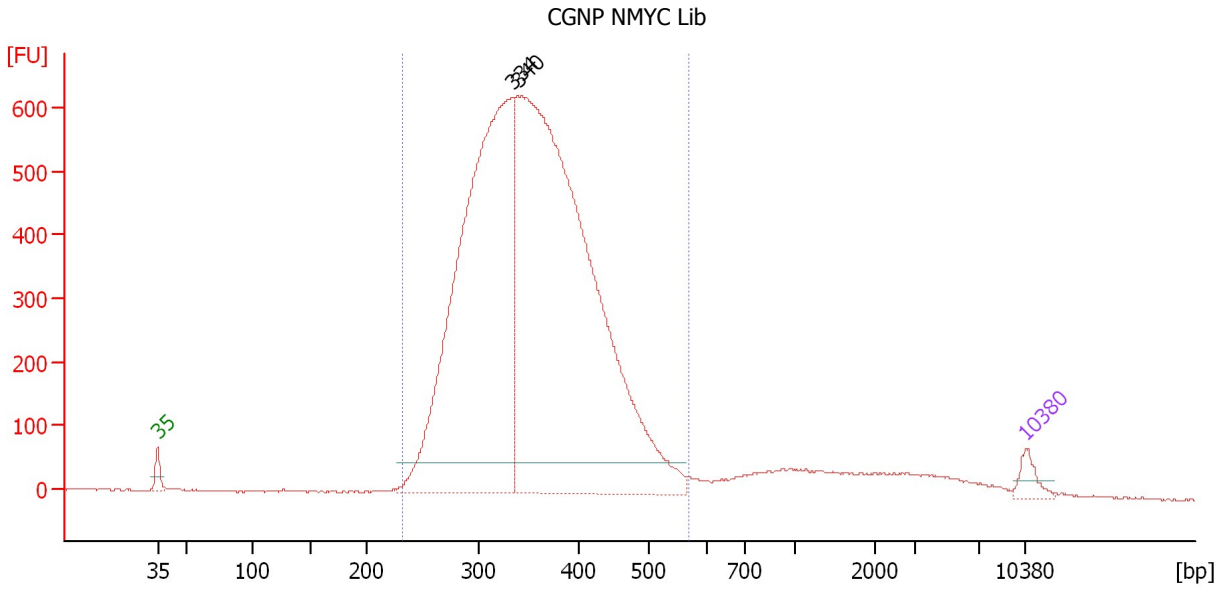
**Region table for sample 1 : CGNP Input Lib**

From [bp]	Molarity [pmol/l]	Average Size [bp]	Conc. [pg/μl]	To [bp]	Corr. Area	% of Total	Size distribution in CV [%]	Color
253	35,271.8	387	8,660.32	601	13,555.6	87	17.5	Blue

Assay Class: High Sensitivity DNA Assay  
Data Path: C:\...ents and Settings\Bioanalyzer\2012-05-09\2012-05-09\_002.xad

Created: 5/9/2012 1:41:20 PM  
Modified: 5/9/2012 2:36:36 PM

**Electropherogram Summary Continued ...**



**Setpoint Deviations for sample 2 : CGNP NMYC Lib**

Height Threshold [FU] : 50

**Overall Results for sample 2 : CGNP NMYC Lib**

Number of peaks found: 2    Corr. Area 1: 10,822.1  
Noise: 1.5

**Peak table for sample 2 : CGNP NMYC Lib**

Peak	Size [bp]	Conc. [pg/μl]	Molarity [pmol/l]	Observations
1	35	125.00	5,411.3	Lower Marker
2	334	4,832.88	21,944.6	
3	340	6,586.29	29,363.6	
4	10,380	75.00	10.9	Upper Marker

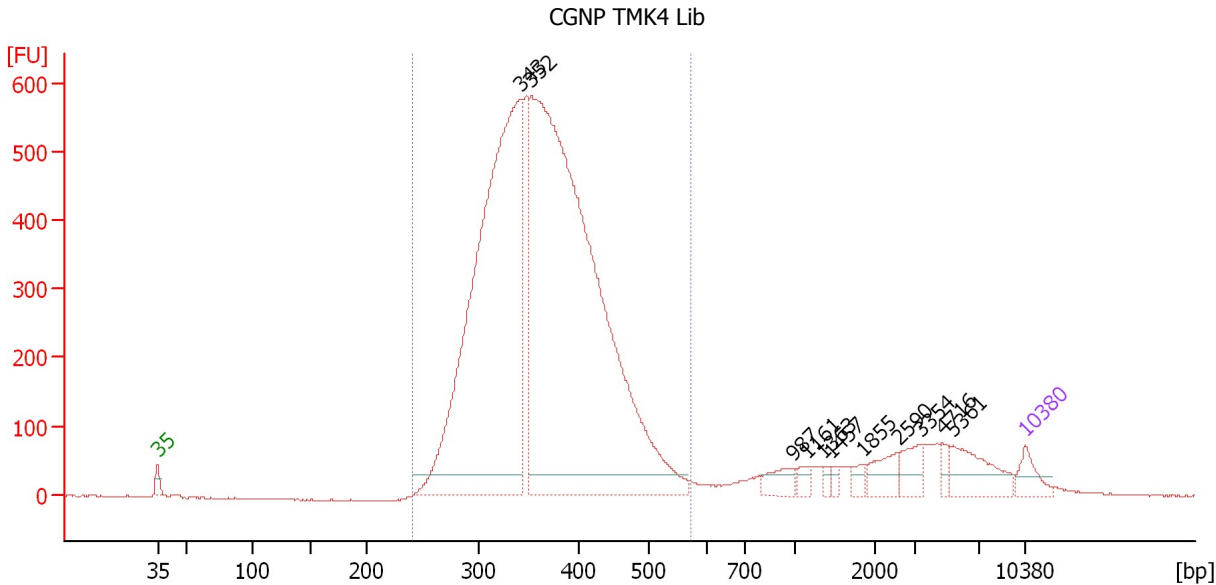
**Region table for sample 2 : CGNP NMYC Lib**

From [bp]	Molarity [pmol/l]	Average Size [bp]	Conc. [pg/μl]	To [bp]	Corr. Area	% of Total	Size distribution in CV [%]	Color
233	49,210.8	356	11,142.15	569	10,822.1	92	17.0	Blue

Assay Class: High Sensitivity DNA Assay  
 Data Path: C:\...ents and Settings\Bioanalyzer\2012-05-09\2012-05-09\_002.xad

Created: 5/9/2012 1:41:20 PM  
 Modified: 5/9/2012 2:36:36 PM

**Electropherogram Summary Continued ...**



**Setpoint Deviations for sample 3 : CGNP TMK4 Lib**

Height Threshold [FU] : 30

**Overall Results for sample 3 : CGNP TMK4 Lib**

Number of peaks found: 11                      Corr. Area 1: 8,898.3  
 Noise: 1.0

**Peak table for sample 3 : CGNP TMK4 Lib**

Peak	Size [bp]	Conc. [pg/μl]	Molarity [pmol/l]	Observations
1	35	125.00	5,411.3	Lower Marker
2	343	3,755.31	16,604.9	
3	352	5,229.43	22,479.9	
4	987	88.44	135.8	
5	1,161	41.66	54.4	
6	1,363	21.17	23.5	
7	1,457	20.70	21.5	
8	1,855	37.42	30.6	
9	2,590	106.57	62.3	
10	3,354	97.67	44.1	
11	4,716	41.95	13.5	
12	5,361	192.71	54.5	
13	10,380	75.00	10.9	Upper Marker

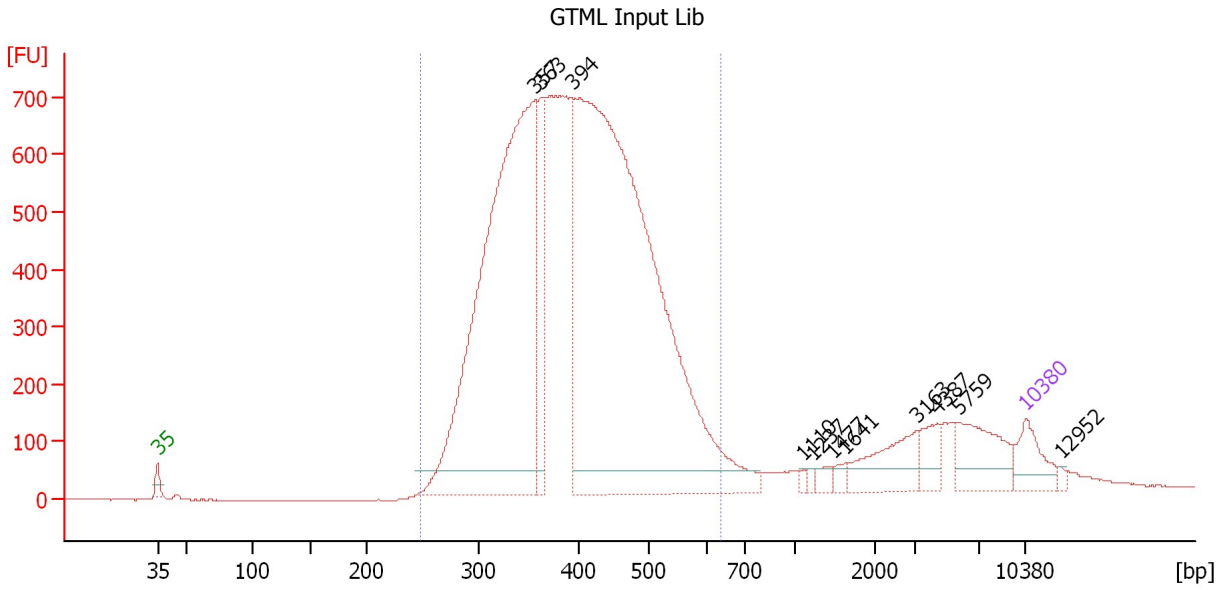
**Region table for sample 3 : CGNP TMK4 Lib**

From [bp]	Molarity [pmol/l]	Average Size [bp]	Conc. [pg/μl]	To [bp]	Corr. Area	% of Total	Size distribution in CV [%]	Color
242	39,331.4	366	9,231.52	571	8,898.3	88	15.6	Blue

Assay Class: High Sensitivity DNA Assay  
 Data Path: C:\...ents and Settings\Bioanalyzer\2012-05-09\2012-05-09\_002.xad

Created: 5/9/2012 1:41:20 PM  
 Modified: 5/9/2012 2:36:36 PM

**Electropherogram Summary Continued ...**



**Setpoint Deviations for sample 4 : GTML Input Lib**

Height Threshold [FU] : 40

**Overall Results for sample 4 : GTML Input Lib**

Number of peaks found: 11                      Corr. Area 1: 13,949.8  
 Noise: 0.8

**Peak table for sample 4 : GTML Input Lib**

Peak	Size [bp]	Conc. [pg/μl]	Molarity [pmol/l]	Observations
1	35	125.00	5,411.3	Lower Marker
2	357	2,003.75	8,513.6	
3	363	272.92	1,138.6	
4	394	2,902.34	11,155.4	
5	1,110	9.40	12.8	
6	1,237	8.85	10.8	
7	1,477	20.71	21.3	
8	1,641	17.89	16.5	
9	3,163	126.56	60.6	
10	4,387	58.71	20.3	
11	5,759	142.37	37.5	
12	10,380	75.00	10.9	Upper Marker
13	12,952	0.00	0.0	

**Region table for sample 4 : GTML Input Lib**

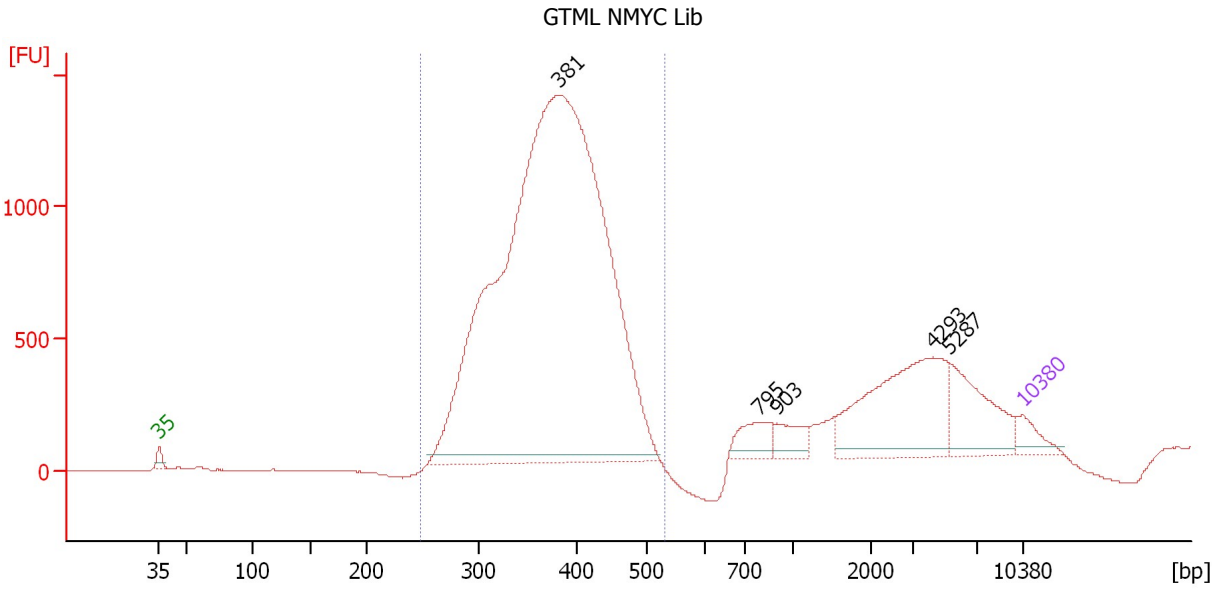
From [bp]	Molarity [pmol/l]	Average Size [bp]	Conc. [pg/μl]	To [bp]	Corr. Area	% of Total	Size distribution in CV [%]	Color
249	23,222.7	404	5,904.34	634	13,949.8	88	19.1	Blue



Assay Class: High Sensitivity DNA Assay  
 Data Path: C:\...ents and Settings\Bioanalyzer\2012-05-09\2012-05-09\_002.xad

Created: 5/9/2012 1:41:20 PM  
 Modified: 5/9/2012 2:36:36 PM

**Electropherogram Summary Continued ...**



**Setpoint Deviations for sample 5 : GTML NMYC Lib**

Height Threshold [FU] : 30

**Overall Results for sample 5 : GTML NMYC Lib**

Number of peaks found: 5                      Corr. Area 1: 18,680.8  
 Noise: 1.7

**Peak table for sample 5 : GTML NMYC Lib**

Peak	Size [bp]	Conc. [pg/μl]	Molarity [pmol/l]	Observations
1	35	125.00	5,411.3	Lower Marker
2	381	6,829.64	27,138.4	
3	795	156.01	297.3	
4	903	119.80	201.0	
5	4,293	684.00	241.4	
6	5,287	329.51	94.4	
7	10,380	75.00	10.9	Upper Marker

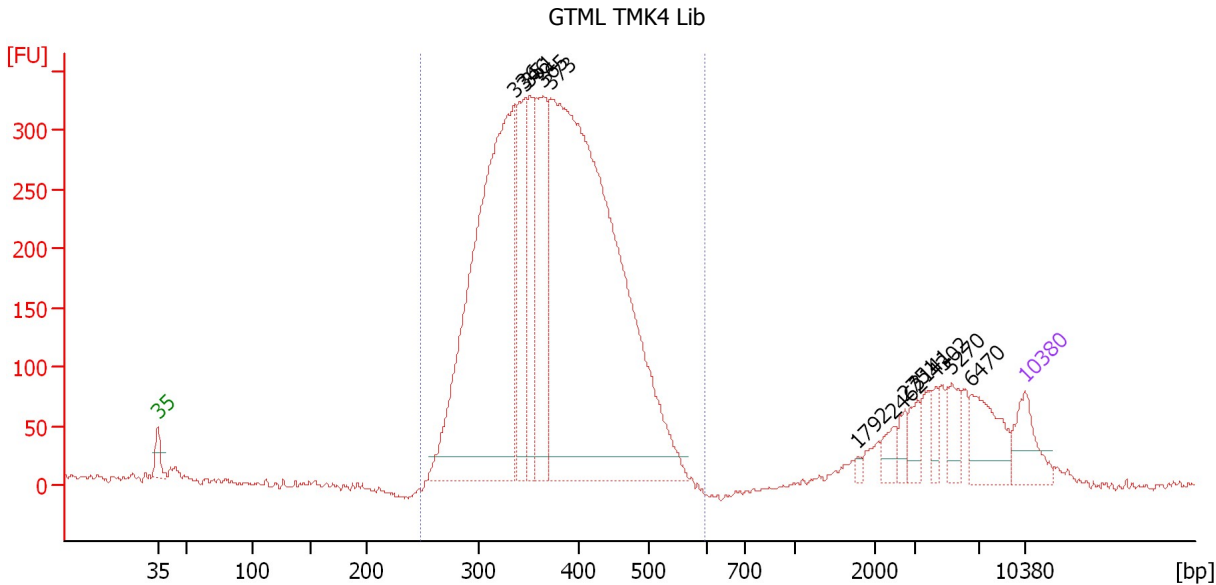
**Region table for sample 5 : GTML NMYC Lib**

From [bp]	Molarity [pmol/l]	Average Size [bp]	Conc. [pg/μl]	To [bp]	Corr. Area	% of Total	Size distribution in CV [%]	Color
249	29,190.3	376	7,074.82	531	18,680.8	79	13.8	Blue

Assay Class: High Sensitivity DNA Assay  
 Data Path: C:\...ents and Settings\Bioanalyzer\2012-05-09\2012-05-09\_002.xad

Created: 5/9/2012 1:41:20 PM  
 Modified: 5/9/2012 2:36:36 PM

**Electropherogram Summary Continued ...**



**Setpoint Deviations for sample 6 : GTML TMK4 Lib**

Height Threshold [FU] : 20

**Overall Results for sample 6 : GTML TMK4 Lib**

Number of peaks found: 12                      Corr. Area 1: 5,575.4  
 Noise: 2.5

**Peak table for sample 6 : GTML TMK4 Lib**

Peak	Size [bp]	Conc. [pg/μl]	Molarity [pmol/l]	Observations
1	35	125.00	5,411.3	Lower Marker
2	336	1,426.78	6,426.6	
3	346	291.84	1,279.0	
4	351	273.27	1,178.5	
5	365	388.14	1,611.0	
6	373	2,213.55	9,003.5	
7	1,792	8.67	7.3	
8	2,462	32.31	19.9	
9	2,751	28.26	15.6	
10	3,141	36.55	17.6	
11	4,302	28.74	10.1	
12	5,270	53.10	15.3	
13	6,470	111.95	26.2	
14	10,380	75.00	10.9	Upper Marker

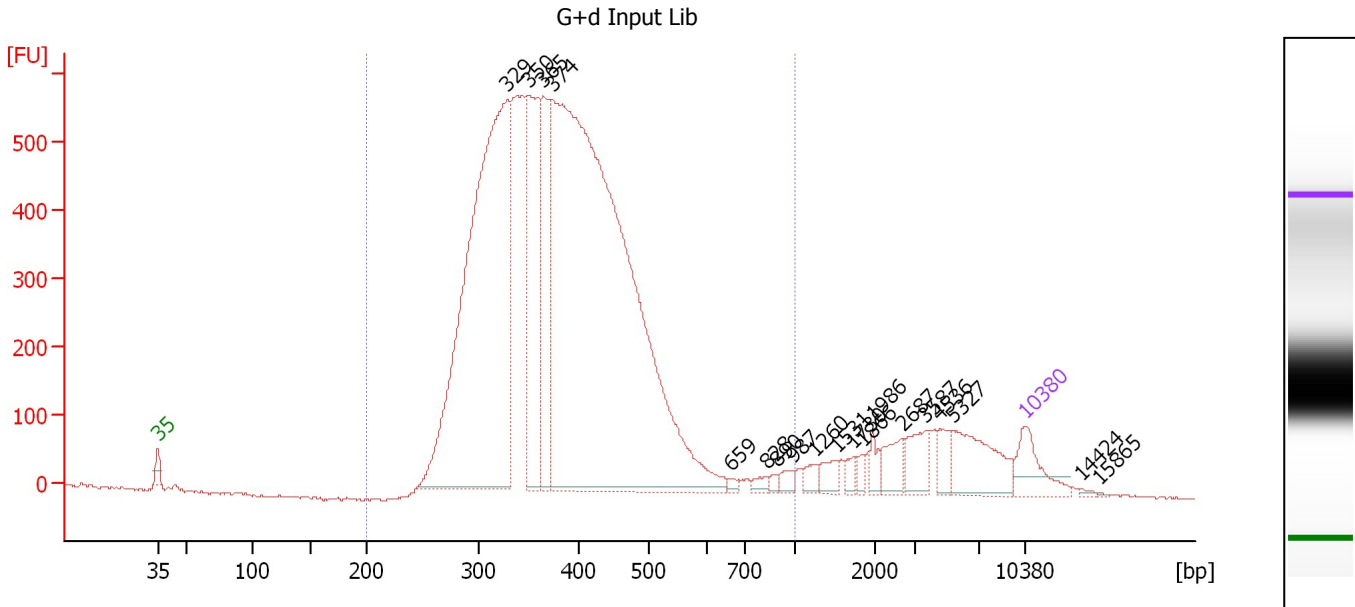
**Region table for sample 6 : GTML TMK4 Lib**

From [bp]	Molarity [pmol/l]	Average Size [bp]	Conc. [pg/μl]	To [bp]	Corr. Area	% of Total	Size distribution in CV [%]	Color
249	18,767.9	377	4,514.90	595	5,575.4	88	16.2	Blue

Assay Class: High Sensitivity DNA Assay  
 Data Path: C:\...ents and Settings\Bioanalyzer\2012-05-09\2012-05-09\_002.xad

Created: 5/9/2012 1:41:20 PM  
 Modified: 5/9/2012 2:36:36 PM

**Electropherogram Summary Continued ...**



**Overall Results for sample 7 : G+d Input Lib**

Number of peaks found: 19                      Corr. Area 1: 11,030.2  
 Noise: 1.4

**Peak table for sample 7 : G+d Input Lib**

Peak	Size [bp]	Conc. [pg/μl]	Molarity [pmol/l]	Observations
1	35	125.00	5,411.3	Lower Marker
2	329	1,759.95	8,105.9	
3	350	490.10	2,121.8	
4	365	343.38	1,426.9	
5	374	2,926.85	11,852.3	
6	659	9.42	21.6	
7	828	14.70	26.9	
8	890	11.24	19.1	
9	987	18.37	28.2	
10	1,260	24.54	29.5	
11	1,531	31.68	31.3	
12	1,730	18.05	15.8	
13	1,866	14.61	11.9	
14	1,986	25.10	19.1	
15	2,687	52.52	29.6	
16	3,587	63.54	26.8	
17	4,536	37.79	12.6	
18	5,327	137.99	39.2	
19	10,380	75.00	10.9	Upper Marker
20	14,424	0.00	0.0	
21	15,865	0.00	0.0	

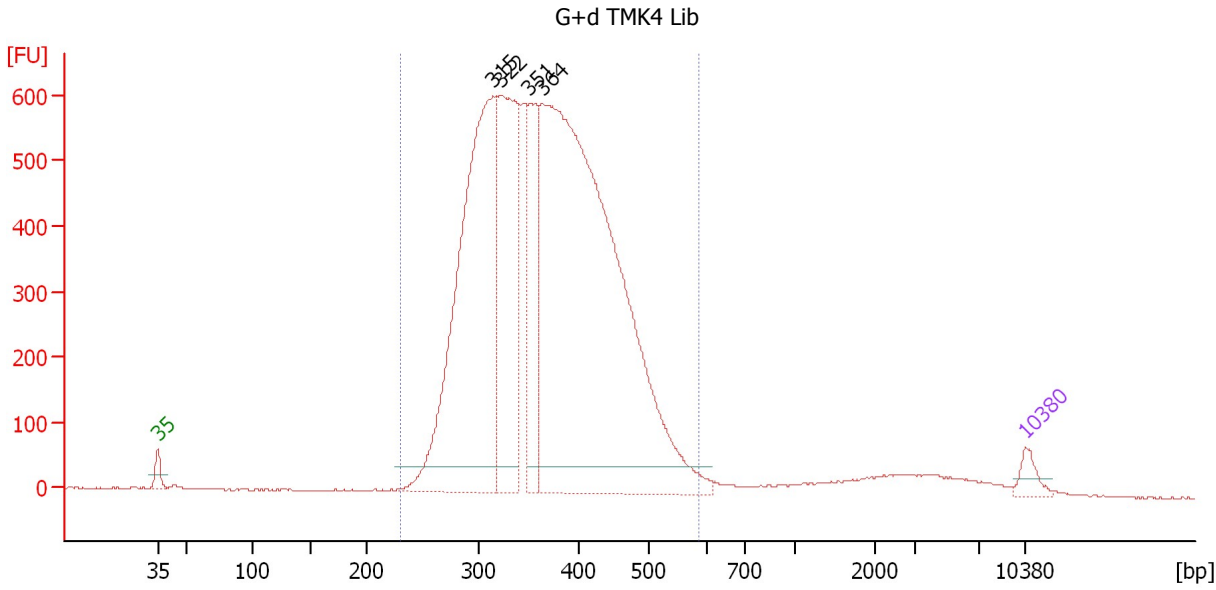
**Region table for sample 7 : G+d Input Lib**

From [bp]	Molarity [pmol/l]	Average Size [bp]	Conc. [pg/μl]	To [bp]	Corr. Area	% of Total	Size distribution in CV [%]	Color
200	24,764.7	389	6,013.18	1,000	11,030.2	90	22.9	Blue

Assay Class: High Sensitivity DNA Assay  
 Data Path: C:\...ents and Settings\Bioanalyzer\2012-05-09\2012-05-09\_002.xad

Created: 5/9/2012 1:41:20 PM  
 Modified: 5/9/2012 2:36:36 PM

**Electropherogram Summary Continued ...**



**Setpoint Deviations for sample 8 : G+d TMK4 Lib**

Height Threshold [FU] : 40

**Overall Results for sample 8 : G+d TMK4 Lib**

Number of peaks found: 4                      Corr. Area 1: 11,437.2  
 Noise: 1.4

**Peak table for sample 8 : G+d TMK4 Lib**

Peak	Size [bp]	Conc. [pg/μl]	Molarity [pmol/l]	Observations
1	35	125.00	5,411.3	Lower Marker
2	315	3,268.76	15,735.5	
3	322	1,649.24	7,753.7	
4	351	802.71	3,463.5	
5	364	5,928.99	24,699.2	
6	10,380	75.00	10.9	Upper Marker

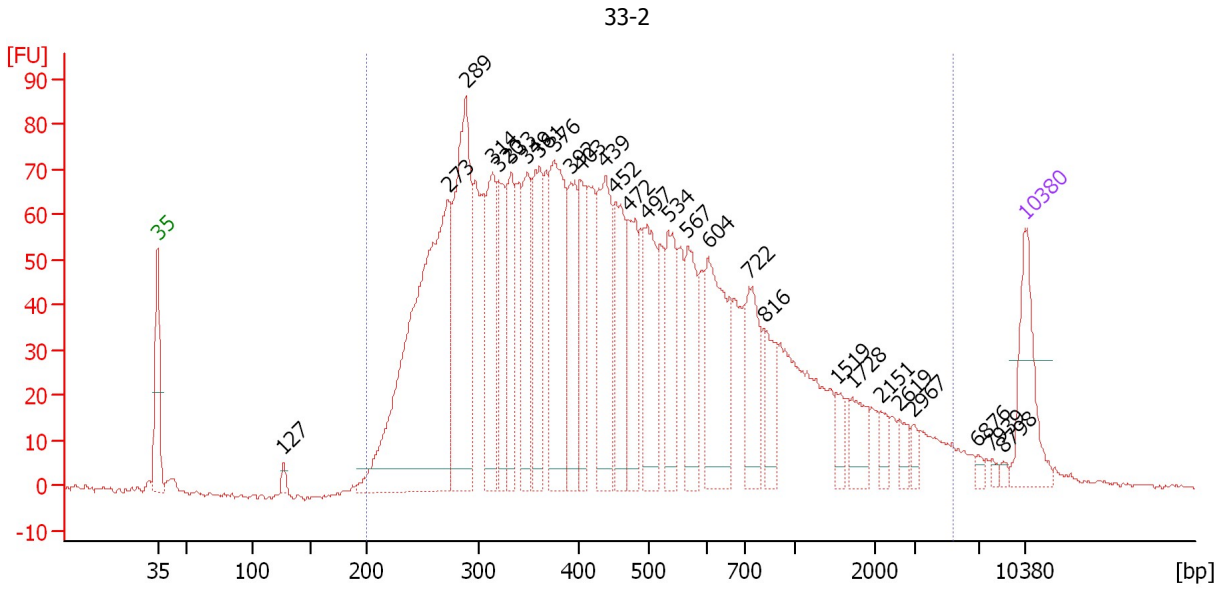
**Region table for sample 8 : G+d TMK4 Lib**

From [bp]	Molarity [pmol/l]	Average Size [bp]	Conc. [pg/μl]	To [bp]	Corr. Area	% of Total	Size distribution in CV [%]	Color
231	50,151.4	370	11,761.86	587	11,437.2	95	17.9	Blue

Assay Class: High Sensitivity DNA Assay  
 Data Path: C:\...ents and Settings\Bioanalyzer\2012-05-09\2012-05-09\_002.xad

Created: 5/9/2012 1:41:20 PM  
 Modified: 5/9/2012 2:36:36 PM

**Electropherogram Summary Continued ...**



**Overall Results for sample 9 : 33-2**

Number of peaks found: 28                      Corr. Area 1: 2,634.3  
 Noise: 0.4

**Peak table for sample 9 : 33-2**

Peak	Size [bp]	Conc. [pg/μl]	Molarity [pmol/l]	Observations
1	35	125.00	5,411.3	Lower Marker
2	127	9.59	114.4	
3	273	630.30	3,503.2	
4	289	316.71	1,663.1	
5	314	152.75	736.4	
6	320	110.28	522.4	
7	333	115.68	526.6	
8	349	127.13	552.0	
9	361	133.51	559.9	
10	376	208.19	839.9	
11	392	112.74	435.5	
12	403	84.82	318.9	
13	439	173.93	600.4	
14	452	109.66	367.6	
15	472	102.28	328.2	
16	497	116.38	355.0	
17	534	93.84	266.3	
18	567	94.87	253.6	
19	604	155.66	390.4	
20	722	88.58	185.9	
21	816	53.59	99.5	
22	1,519	18.44	18.4	
23	1,728	32.37	28.4	
24	2,151	14.23	10.0	
25	2,619	14.57	8.4	
26	2,967	9.19	4.7	


Assay Class: High Sensitivity DNA Assay  
Data Path: C:\...ents and Settings\Bioanalyzer\2012-05-09\2012-05-09\_002.xad

Created: 5/9/2012 1:41:20 PM  
Modified: 5/9/2012 2:36:36 PM

**Electropherogram Summary Continued ...****... Peak table for sample 9 : 33-2**

Peak	Size [bp]	Conc. [pg/ $\mu$ l]	Molarity [pmol/l]	Observations
27	6,876	5.27	1.2	
28	7,939	3.74	0.7	
29	8,798	3.63	0.6	
30	10,380	75.00	10.9	Upper Marker

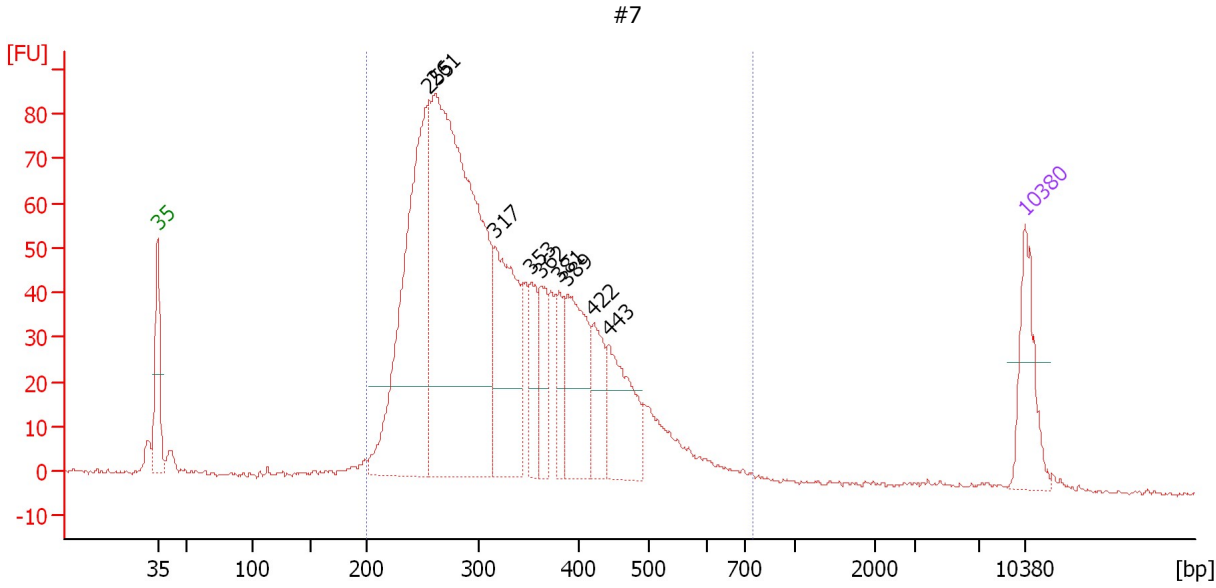
**Region table for sample 9 : 33-2**

From [bp]	Molarity [pmol/l]	Average Size [bp]	Conc. [pg/ $\mu$ l]	To [bp]	Corr. Area	% of Total	Size distribution in CV [%]	Color
200	15,513.1	621	3,972.38	5,362	2,634.3	98	100.0	

Assay Class: High Sensitivity DNA Assay  
 Data Path: C:\...ents and Settings\Bioanalyzer\2012-05-09\2012-05-09\_002.xad

Created: 5/9/2012 1:41:20 PM  
 Modified: 5/9/2012 2:36:36 PM

**Electropherogram Summary Continued ...**



**Setpoint Deviations for sample 10 : #7**

Height Threshold [FU] : 20

**Overall Results for sample 10 : #7**

Number of peaks found: 9                      Corr. Area 1: 1,549.8  
 Noise: 0.5

**Peak table for sample 10 : #7**

Peak	Size [bp]	Conc. [pg/μl]	Molarity [pmol/l]	Observations
1	35	125.00	5,411.3	Lower Marker
2	255	523.18	3,103.4	
3	261	971.42	5,629.3	
4	317	257.37	1,232.0	
5	353	73.17	314.0	
6	362	70.73	295.8	
7	381	53.52	212.9	
8	389	161.33	627.6	
9	422	73.71	264.7	
10	443	128.50	439.7	
11	10,380	75.00	10.9	Upper Marker

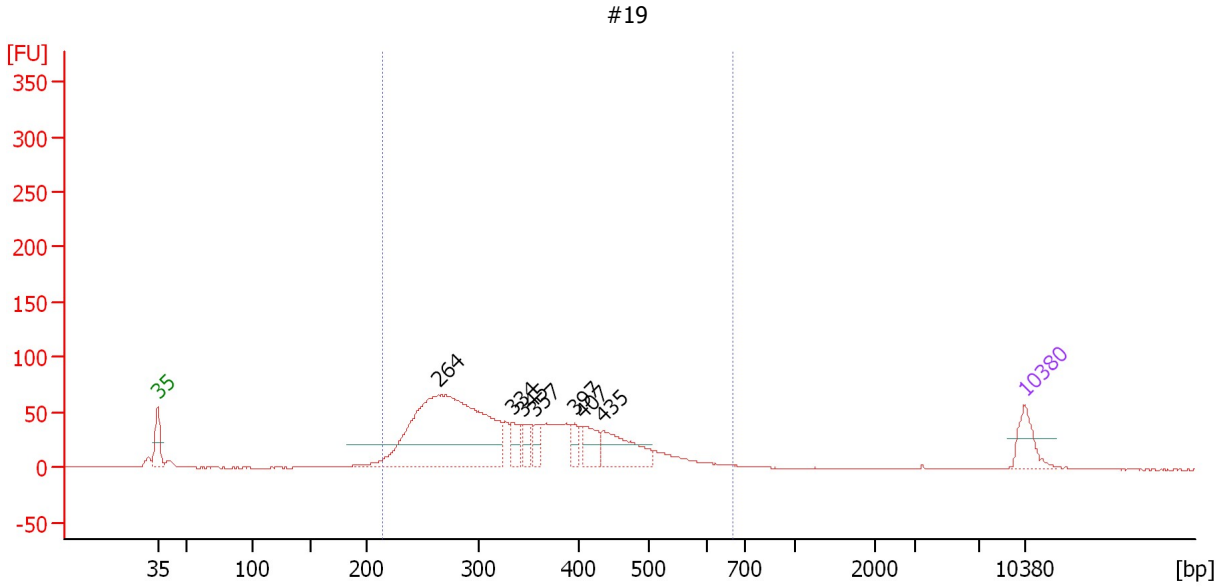
**Region table for sample 10 : #7**

From [bp]	Molarity [pmol/l]	Average Size [bp]	Conc. [pg/μl]	To [bp]	Corr. Area	% of Total	Size distribution in CV [%]	Color
200	12,452.9	334	2,522.86	746	1,549.8	96	26.6	Blue

Assay Class: High Sensitivity DNA Assay  
 Data Path: C:\...ents and Settings\Bioanalyzer\2012-05-09\2012-05-09\_002.xad

Created: 5/9/2012 1:41:20 PM  
 Modified: 5/9/2012 2:36:36 PM

**Electropherogram Summary Continued ...**



**Setpoint Deviations for sample 11 : #19**

Height Threshold [FU] : 20

**Overall Results for sample 11 : #19**

Number of peaks found: 7                      Corr. Area 1: 1,324.0  
 Noise: 0.2

**Peak table for sample 11 : #19**

Peak	Size [bp]	Conc. [pg/μl]	Molarity [pmol/l]	Observations
1	35	125.00	5,411.3	Lower Marker
2	264	1,187.61	6,806.9	
3	334	73.02	330.9	
4	345	61.60	270.6	
5	357	55.38	234.8	
6	397	50.98	194.8	
7	407	94.28	350.7	
8	435	187.37	651.9	
9	10,380	75.00	10.9	Upper Marker

**Region table for sample 11 : #19**

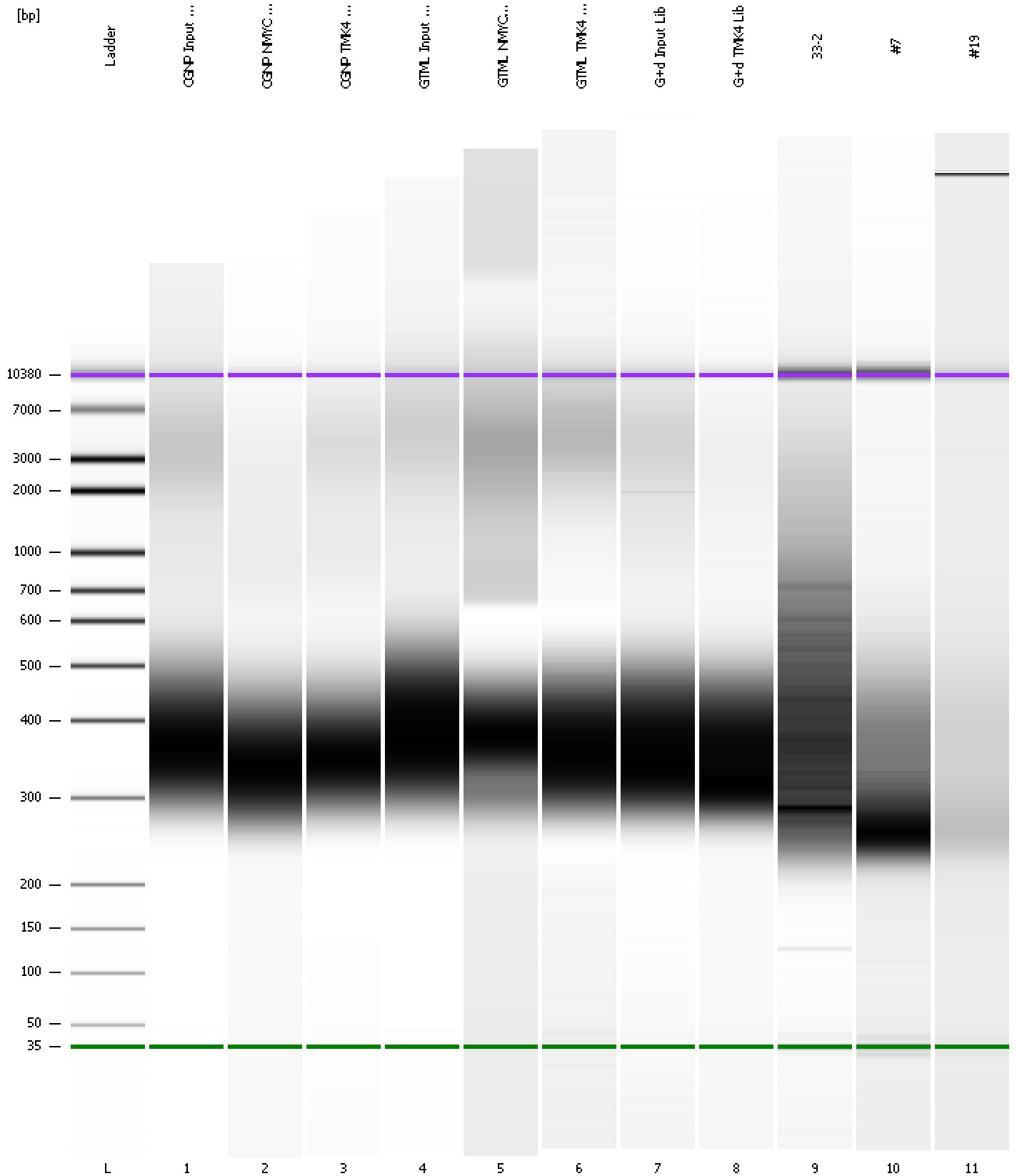
From [bp]	Molarity [pmol/l]	Average Size [bp]	Conc. [pg/μl]	To [bp]	Corr. Area	% of Total	Size distribution in CV [%]	Color
214	9,952.4	345	2,084.13	666	1,324.0	89	25.7	Blue



Assay Class: High Sensitivity DNA Assay  
Data Path: C:\...ents and Settings\Bioanalyzer\2012-05-09\2012-05-09\_002.xad

Created: 5/9/2012 1:41:20 PM  
Modified: 5/9/2012 2:36:36 PM

**Gel Image**



Assay Class: High Sensitivity DNA Assay Created: 5/9/2012 1:41:20 PM  
 Data Path: C:\...ents and Settings\Bioanalyzer\2012-05-09\2012-05-09\_002.xad Modified: 5/9/2012 2:36:36 PM

**Run Logbook**

Description	Number	Source	Category	Sub Category	Time	Time Zone	User	Host
Run ended on port 1 (Number of wells acquired: 12)		Instrument	Run		5/9/2012 2:22:39 PM	(GMT --07:00) Pacific Standard Time	UC Davis	D8XSMGH1
Run started on port 1 (File: C:\Documents and Settings\Bioanalyzer\2012-05-09\2012-05-09_002.xad)		Instrument	Run		5/9/2012 1:41:25 PM	(GMT --07:00) Pacific Standard Time	UC Davis	D8XSMGH1
Product Number : G2938B		Instrument	Run		5/9/2012 1:41:25 PM	(GMT --07:00) Pacific Standard Time	UC Davis	D8XSMGH1
Name :		Instrument	Run		5/9/2012 1:41:25 PM	(GMT --07:00) Pacific Standard Time	UC Davis	D8XSMGH1
Vendor : Agilent Technologies		Instrument	Run		5/9/2012 1:41:25 PM	(GMT --07:00) Pacific Standard Time	UC Davis	D8XSMGH1
Serial# : DE13701086		Instrument	Run		5/9/2012 1:41:25 PM	(GMT --07:00) Pacific Standard Time	UC Davis	D8XSMGH1
Firmware : C.01.069		Instrument	Run		5/9/2012 1:41:25 PM	(GMT --07:00) Pacific Standard Time	UC Davis	D8XSMGH1
Cartridge : Electrode		Instrument	Run		5/9/2012 1:41:25 PM	(GMT --07:00) Pacific Standard Time	UC Davis	D8XSMGH1