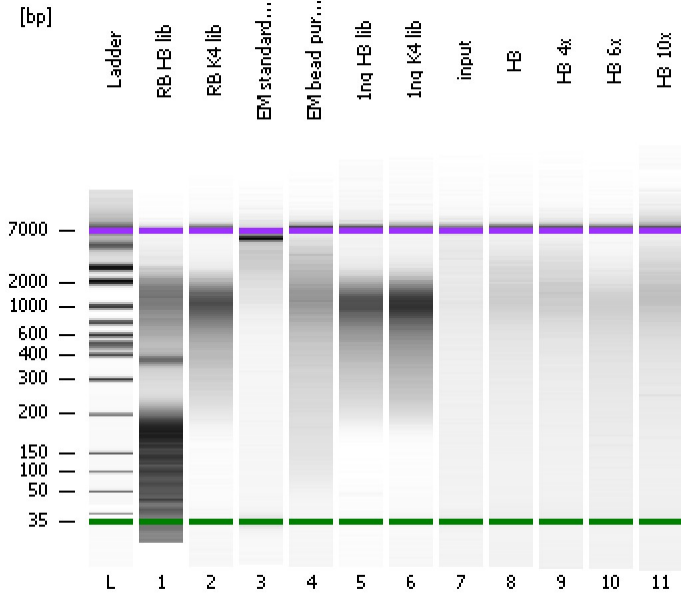


Assay Class: High Sensitivity DNA Assay  
Data Path: C:\...ents and Settings\Bioanalyzer\2012-05-10\2012-05-10\_002.xad

Created: 5/10/2012 12:09:10 PM  
Modified: 5/10/2012 12:50:32 PM

### Electrophoresis File Run Summary



#### Instrument Information:

Instrument Name: DE13701086      Firmware: C.01.069  
Serial#: DE13701086      Type: G2938B

#### Assay Information:

Assay Origin Path: C:\Program Files\Agilent\2100 bioanalyzer\2100 expert\assays\dsDNA\High Sensitivity DNA.xsy  
Assay Class: High Sensitivity DNA Assay  
Version: 1.03  
Assay Comments: Copyright © 2003-2010 Agilent Technologies

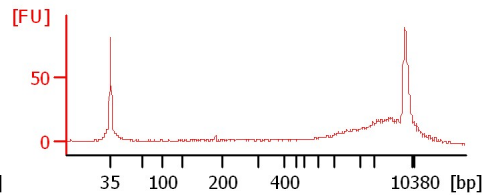
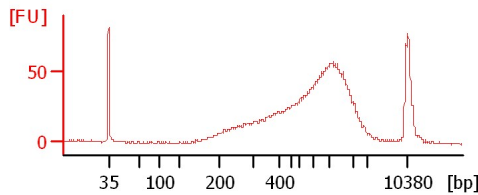
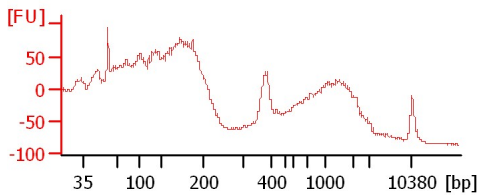
#### Chip Information:

Chip Lot #:      Reagent Kit Lot #:      Chip Comments:

RB H3 lib

RB K4 lib

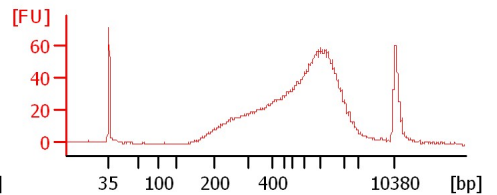
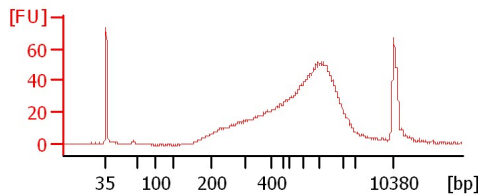
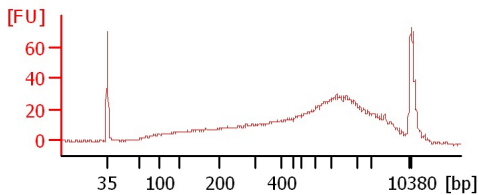
EM standard pption



EM bead purification

1ng H3 lib

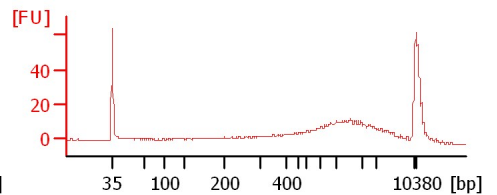
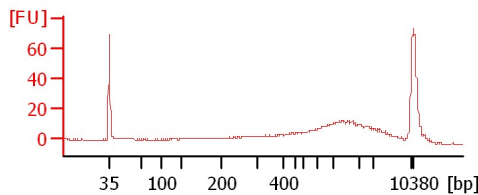
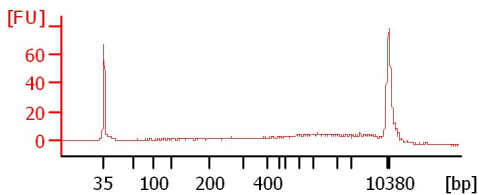
1ng K4 lib



input

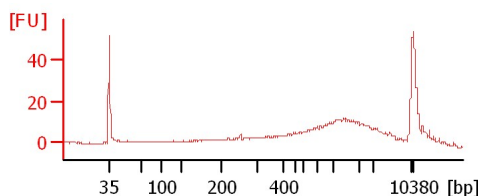
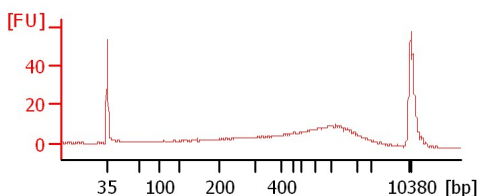
H3

H3 4x



H3 6x

H3 10x



Assay Class: High Sensitivity DNA Assay  
 Data Path: C:\...ents and Settings\Bioanalyzer\2012-05-10\2012-05-10\_002.xad

Created: 5/10/2012 12:09:10 PM  
 Modified: 5/10/2012 12:50:32 PM

**Electrophoresis File Run Summary (Chip Summary)**

Sample Name	Sample Comment	Rest. Digest	Status	Observation	Result Label	Result Color
RB H3 lib		<input type="checkbox"/>	✓			
RB K4 lib		<input type="checkbox"/>	✓			
EM standard pption		<input type="checkbox"/>	✓			
EM bead purification		<input type="checkbox"/>	✓			
1ng H3 lib		<input type="checkbox"/>	✓			
1ng K4 lib		<input type="checkbox"/>	✓			
input		<input type="checkbox"/>	✓			
H3		<input type="checkbox"/>	✓			
H3 4x		<input type="checkbox"/>	✓			
H3 6x		<input type="checkbox"/>	✓			
H3 10x		<input type="checkbox"/>	✓			
Ladder		<input type="checkbox"/>	✓			

**Chip Lot #**

**Reagent Kit Lot #**

**Chip Comments :**

Assay Class: High Sensitivity DNA Assay  
Data Path: C:\...ents and Settings\Bioanalyzer\2012-05-10\2012-05-10\_002.xad

Created: 5/10/2012 12:09:10 PM  
Modified: 5/10/2012 12:50:32 PM

**Electrophoresis Assay Details**

**General Analysis Settings**

Number of Available Sample and Ladder Wells (Max.) : 12  
Minimum Visible Range [s] : 32  
Maximum Visible Range [s] : 138  
Start Analysis Time Range [s] : 33  
End Analysis Time Range [s] : 137.5  
Ladder Concentration [pg/μl] : 1950  
Uses Standard Area for Ladder Fragments  
Lower Marker Concentration [pg/μl] : 125  
Upper Marker Concentration [pg/μl] : 75  
Used Upper Marker for Quantitation  
Standard Curve Fit is Point to Point  
Show Data Aligned to Lower and Upper Marker

**Integrator Settings**

Integration Start Time [s] : 33.05  
Integration End Time [s] : 137  
Slope Threshold : 0.8  
Height Threshold [FU] : 5  
Area Threshold : 0.1  
Width Threshold [s] : 0.6  
Baseline Plateau [s] : 0.5

**Filter Settings**

Filter Width [s] : 0.5  
Polynomial Order : 4

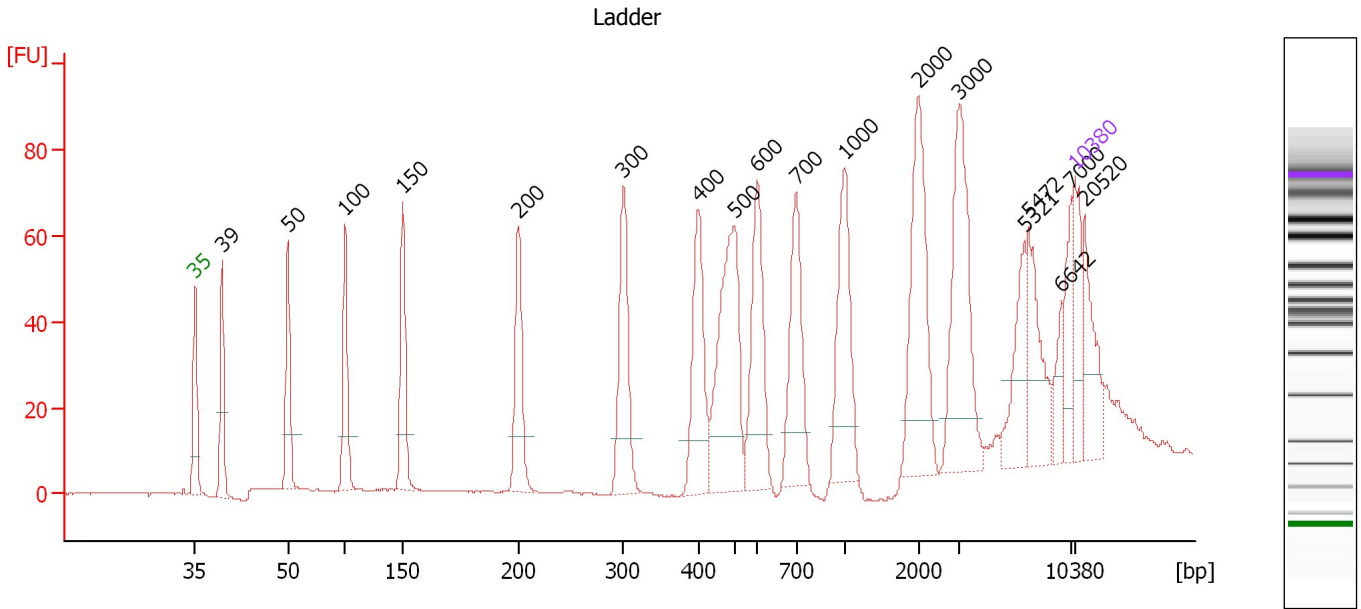
**Ladder**

Ladder Peak	Size	Area
1	35	160
2	50	210
3	100	208
4	150	221
5	200	242
6	300	270
7	400	305
8	500	306
9	600	336
10	700	321
11	1000	366
12	2000	413
13	3000	411
14	7000	400
15	10380	214

Assay Class: High Sensitivity DNA Assay  
 Data Path: C:\...ents and Settings\Bioanalyzer\2012-05-10\2012-05-10\_002.xad

Created: 5/10/2012 12:09:10 PM  
 Modified: 5/10/2012 12:50:32 PM

**Electropherogram Summary**



**Overall Results for Ladder**

Noise: 0.1

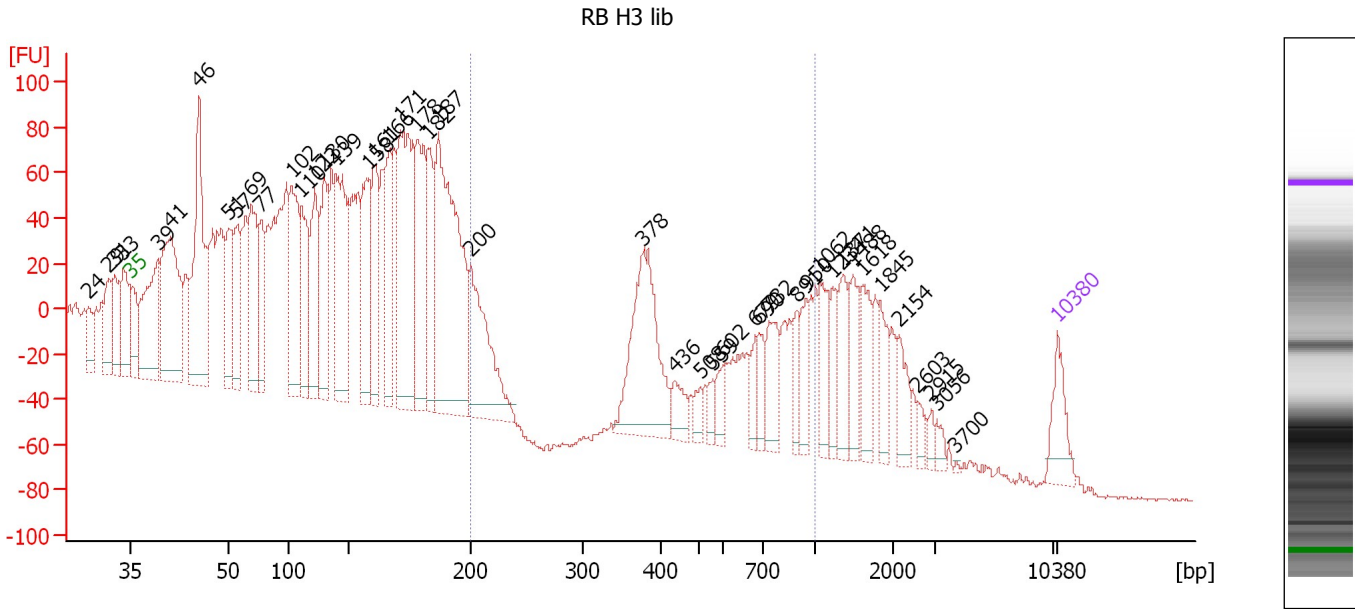
**Peak table for Ladder**

Peak	Size [bp]	Conc. [pg/μl]	Molarity [pmol/l]	Observations
1	35	125.00	5,411.3	Lower Marker
2	39	0.00	0.0	
3	50	150.00	4,545.5	Ladder Peak
4	100	150.00	2,272.7	Ladder Peak
5	150	150.00	1,515.2	Ladder Peak
6	200	150.00	1,136.4	Ladder Peak
7	300	150.00	757.6	Ladder Peak
8	400	150.00	568.2	Ladder Peak
9	500	150.00	454.5	Ladder Peak
10	600	150.00	378.8	Ladder Peak
11	700	150.00	324.7	Ladder Peak
12	1,000	150.00	227.3	Ladder Peak
13	2,000	150.00	113.6	Ladder Peak
14	3,000	150.00	75.8	Ladder Peak
15	5,321	0.00	0.0	
16	5,472	0.00	0.0	
17	6,642	0.00	0.0	
18	7,000	150.00	32.5	Ladder Peak
19	10,380	75.00	10.9	Upper Marker
20	20,520	0.00	0.0	

Assay Class: High Sensitivity DNA Assay  
 Data Path: C:\...ents and Settings\Bioanalyzer\2012-05-10\2012-05-10\_002.xad

Created: 5/10/2012 12:09:10 PM  
 Modified: 5/10/2012 12:50:32 PM

**Electropherogram Summary Continued ...**



**Overall Results for sample 1 : RB H3 lib**

Number of peaks found: 45                      Corr. Area 1: 699.8  
 Noise: 0.8

**Peak table for sample 1 : RB H3 lib**

Peak	Size [bp]	Conc. [pg/μl]	Molarity [pmol/l]	Observations
1	24	0.00	0.0	
2	29	0.00	0.0	
3	31	0.00	0.0	
4	33	0.00	0.0	
5	35	125.00	5,411.3	Lower Marker
6	39	441.99	17,063.6	
7	41	634.38	23,326.3	
8	46	669.34	22,272.6	
9	51	229.29	6,810.9	
10	57	232.40	6,209.3	
11	69	331.81	7,287.6	
12	77	199.92	3,917.6	
13	102	331.40	4,907.7	
14	110	259.54	3,568.2	
15	122	290.61	3,620.7	
16	130	278.76	3,261.5	
17	139	431.78	4,716.4	
18	158	328.84	3,159.5	
19	161	245.67	2,318.7	
20	166	255.09	2,322.4	
21	171	606.27	5,371.7	
22	178	371.29	3,168.4	
23	182	240.97	2,002.2	
24	187	819.49	6,657.5	
25	200	369.92	2,808.1	
26	378	400.63	1,606.2	

Assay Class: High Sensitivity DNA Assay  
 Data Path: C:\...ents and Settings\Bioanalyzer\2012-05-10\2012-05-10\_002.xad


Created: 5/10/2012 12:09:10 PM  
 Modified: 5/10/2012 12:50:32 PM

**Electropherogram Summary Continued ...**

**... Peak table for sample 1 : RB H3 lib**

Peak	Size [bp]	Conc. [pg/µl]	Molarity [pmol/l]	Observations
27	436	63.85	222.0	
28	508	31.52	94.0	
29	559	26.11	70.8	
30	602	46.49	117.1	
31	679	48.80	108.8	
32	690	49.22	108.1	
33	732	102.48	212.2	
34	891	50.14	85.3	
35	950	67.75	108.0	
36	1,062	95.43	136.1	
37	1,234	62.21	76.4	
38	1,371	85.41	94.4	
39	1,488	84.26	85.8	
40	1,618	86.07	80.6	
41	1,845	71.47	58.7	
42	2,154	61.45	43.2	
43	2,603	20.09	11.7	
44	2,915	16.58	8.6	
45	3,056	16.42	8.1	
46	3,700	2.23	0.9	
47	▶ 10,380	75.00	10.9	Upper Marker

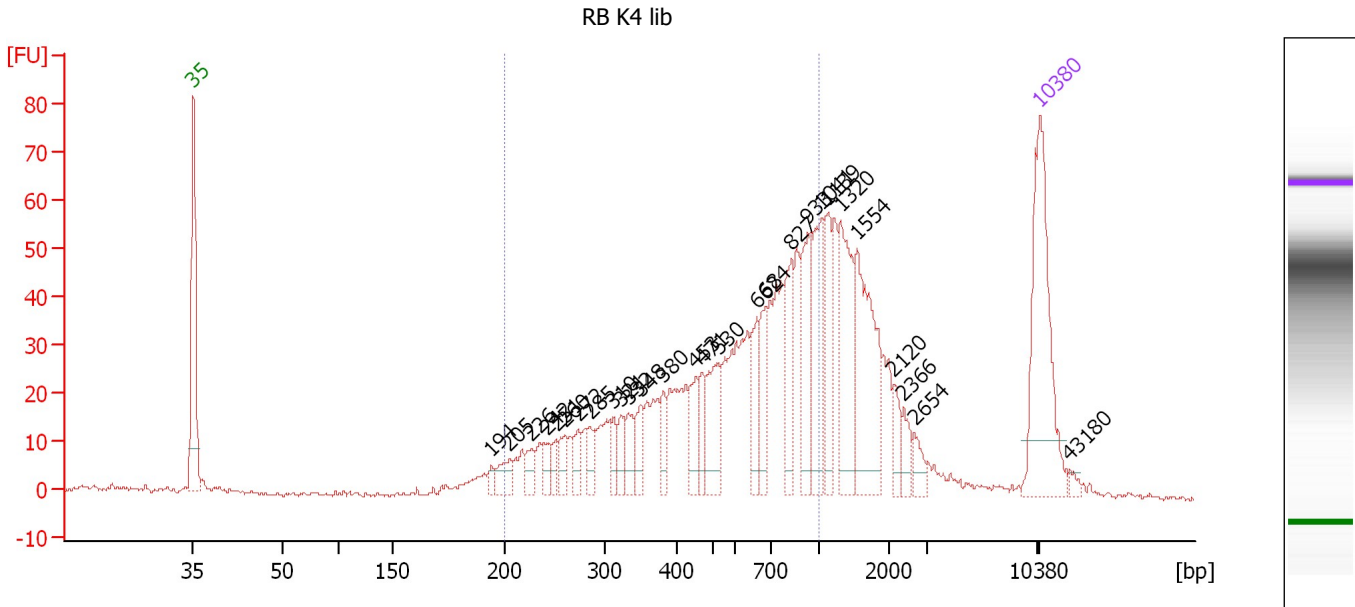
**Region table for sample 1 : RB H3 lib**

From [bp]	Molarity [pmol/l]	Average Size [bp]	Conc. [pg/µl]	To [bp]	Corr. Area	% of Total	Size distribution in CV [%]	Color
200	3,444.5	603	993.04	1,000	699.8	15	39.5	

Assay Class: High Sensitivity DNA Assay  
 Data Path: C:\...ents and Settings\Bioanalyzer\2012-05-10\2012-05-10\_002.xad

Created: 5/10/2012 12:09:10 PM  
 Modified: 5/10/2012 12:50:32 PM

**Electropherogram Summary Continued ...**



**Overall Results for sample 2 : RB K4 lib**

Number of peaks found: 28                      Corr. Area 1: 738.2  
 Noise: 0.4

**Peak table for sample 2 : RB K4 lib**

Peak	Size [bp]	Conc. [pg/μl]	Molarity [pmol/l]	Observations
1	35	125.00	5,411.3	Lower Marker
2	194	5.58	43.6	
3	205	16.58	122.7	
4	226	11.43	76.7	
5	242	10.46	65.4	
6	251	9.87	59.6	
7	260	13.71	80.0	
8	272	12.62	70.2	
9	285	11.47	61.1	
10	310	12.07	59.0	
11	321	14.20	67.0	
12	332	16.18	73.9	
13	348	15.89	69.2	
14	380	14.15	56.4	
15	453	21.04	70.4	
16	471	15.96	51.3	
17	530	34.60	98.8	
18	662	24.61	56.4	
19	684	21.76	48.2	
20	827	32.48	59.5	
21	933	38.12	61.9	
22	1,041	46.78	68.1	
23	1,139	30.90	41.1	
24	1,320	52.86	60.7	
25	1,554	70.57	68.8	
26	2,120	9.67	6.9	

Assay Class: High Sensitivity DNA Assay  
 Data Path: C:\...ents and Settings\Bioanalyzer\2012-05-10\2012-05-10\_002.xad


Created: 5/10/2012 12:09:10 PM  
 Modified: 5/10/2012 12:50:32 PM

### Electropherogram Summary Continued ...

#### ... Peak table for sample 2 : RB K4 lib

Peak	Size [bp]	Conc. [pg/μl]	Molarity [pmol/l]	Observations
27	2,366	9.00	5.8	
28	2,654	8.05	4.6	
29	10,380	75.00	10.9	Upper Marker
30	43,180	0.00	0.0	

#### Region table for sample 2 : RB K4 lib

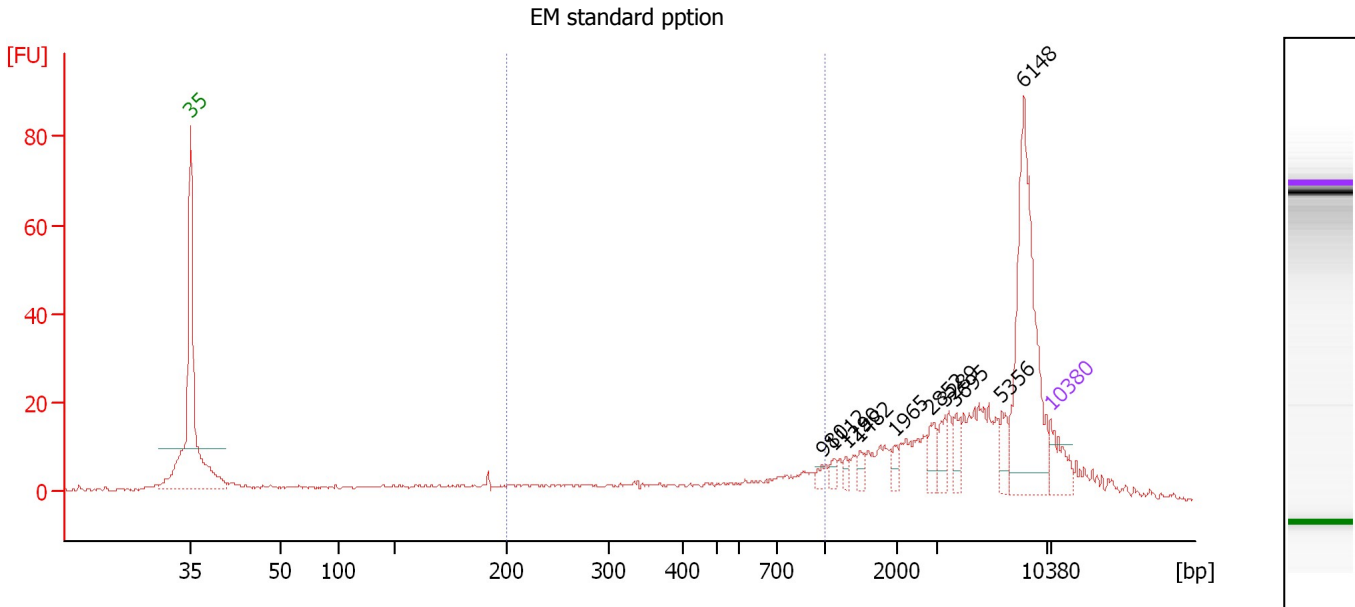
From [bp]	Molarity [pmol/l]	Average Size [bp]	Conc. [pg/μl]	To [bp]	Corr. Area	% of Total	Size distribution in CV [%]	Color
200	2,294.7	575	665.53	1,000	738.2	65	40.1	



Assay Class: High Sensitivity DNA Assay  
 Data Path: C:\...ents and Settings\Bioanalyzer\2012-05-10\2012-05-10\_002.xad

Created: 5/10/2012 12:09:10 PM  
 Modified: 5/10/2012 12:50:32 PM

**Electropherogram Summary Continued ...**



**Overall Results for sample 3 : EM standard pption**

Number of peaks found: 10      Corr. Area 1: 88.7  
 Noise: 0.3

**Peak table for sample 3 : EM standard pption**

Peak	Size [bp]	Conc. [pg/μl]	Molarity [pmol/l]	Observations
1	35	125.00	5,411.3	Lower Marker
2	980	18.31	28.3	
3	1,112	18.47	25.2	
4	1,290	17.76	20.9	
5	1,482	23.84	24.4	
6	1,965	22.52	17.4	
7	2,852	49.53	26.3	
8	3,289	42.12	19.4	
9	3,695	42.76	17.5	
10	5,356	50.65	14.3	
11	6,148	532.30	131.2	
12	10,380	75.00	10.9	Upper Marker

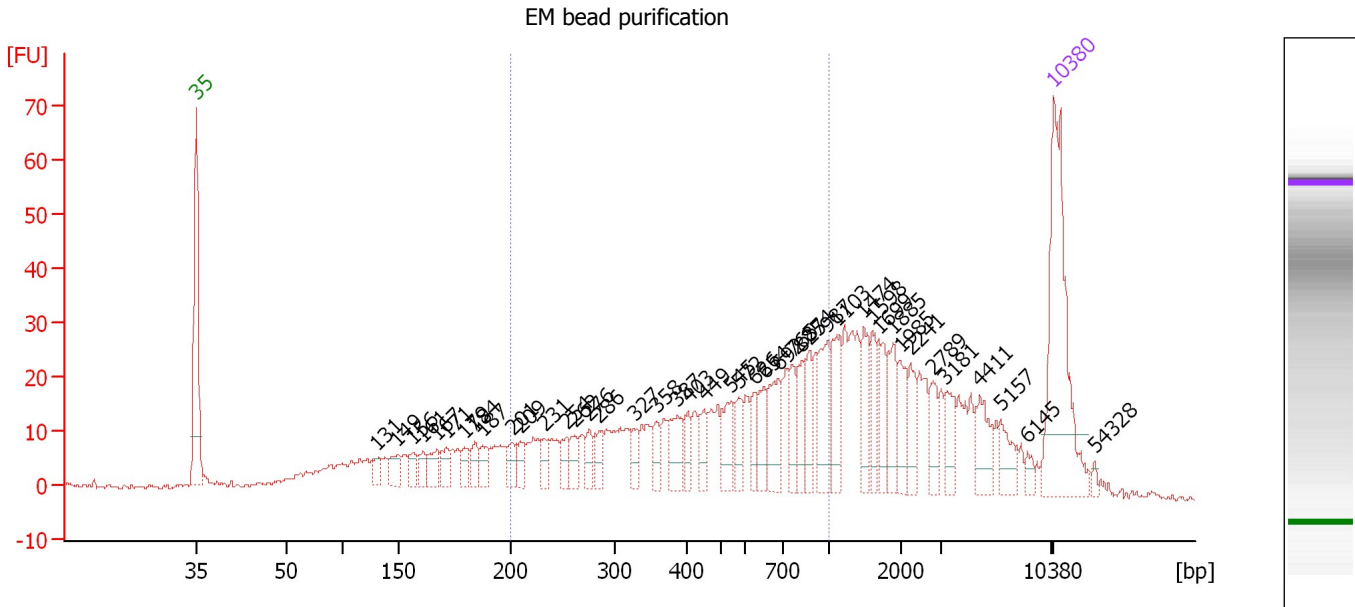
**Region table for sample 3 : EM standard pption**

From [bp]	Molarity [pmol/l]	Average Size [bp]	Conc. [pg/μl]	To [bp]	Corr. Area	% of Total	Size distribution in CV [%]	Color
200	1,819.0	538	470.65	1,000	88.7	17	45.4	Blue

Assay Class: High Sensitivity DNA Assay  
 Data Path: C:\...ents and Settings\Bioanalyzer\2012-05-10\2012-05-10\_002.xad

Created: 5/10/2012 12:09:10 PM  
 Modified: 5/10/2012 12:50:32 PM

**Electropherogram Summary Continued ...**



**Overall Results for sample 4 : EM bead purification**

Number of peaks found: 43                      Corr. Area 1: 480.7  
 Noise: 0.5

**Peak table for sample 4 : EM bead purification**

Peak	Size [bp]	Conc. [pg/μl]	Molarity [pmol/l]	Observations
1	35	125.00	5,411.3	Lower Marker
2	131	9.79	113.5	
3	149	13.84	141.2	
4	156	8.81	85.4	
5	161	8.23	77.5	
6	167	13.89	126.2	
7	171	11.93	105.6	
8	179	9.38	79.4	
9	184	10.59	87.4	
10	187	10.99	89.0	
11	201	12.54	94.7	
12	209	9.17	66.6	
13	231	9.40	61.5	
14	254	11.13	66.5	
15	262	11.41	66.0	
16	276	10.48	57.6	
17	286	12.55	66.5	
18	327	9.39	43.5	
19	358	9.76	41.3	
20	387	19.93	78.1	
21	403	10.19	38.3	
22	449	12.77	43.1	
23	545	17.94	49.9	
24	572	13.50	35.8	
25	626	11.29	27.3	
26	654	14.57	33.8	

Assay Class: High Sensitivity DNA Assay  
 Data Path: C:\...ents and Settings\Bioanalyzer\2012-05-10\2012-05-10\_002.xad


Created: 5/10/2012 12:09:10 PM  
 Modified: 5/10/2012 12:50:32 PM

**Electropherogram Summary Continued ...**

**... Peak table for sample 4 : EM bead purification**

Peak	Size [bp]	Conc. [pg/µl]	Molarity [pmol/l]	Observations
27	692	25.48	55.8	
28	765	13.98	27.7	
29	825	17.11	31.4	
30	874	14.42	25.0	
31	987	25.58	39.3	
32	1,103	21.78	29.9	
33	1,474	17.54	18.0	
34	1,598	14.78	14.0	
35	1,699	14.68	13.1	
36	1,885	16.38	13.2	
37	1,985	14.66	11.2	
38	2,241	12.28	8.3	
39	2,789	10.68	5.8	
40	3,181	12.24	5.8	
41	4,411	16.89	5.8	
42	5,157	11.99	3.5	
43	6,145	3.91	1.0	
44	10,380	75.00	10.9	Upper Marker
45	54,328	0.00	0.0	

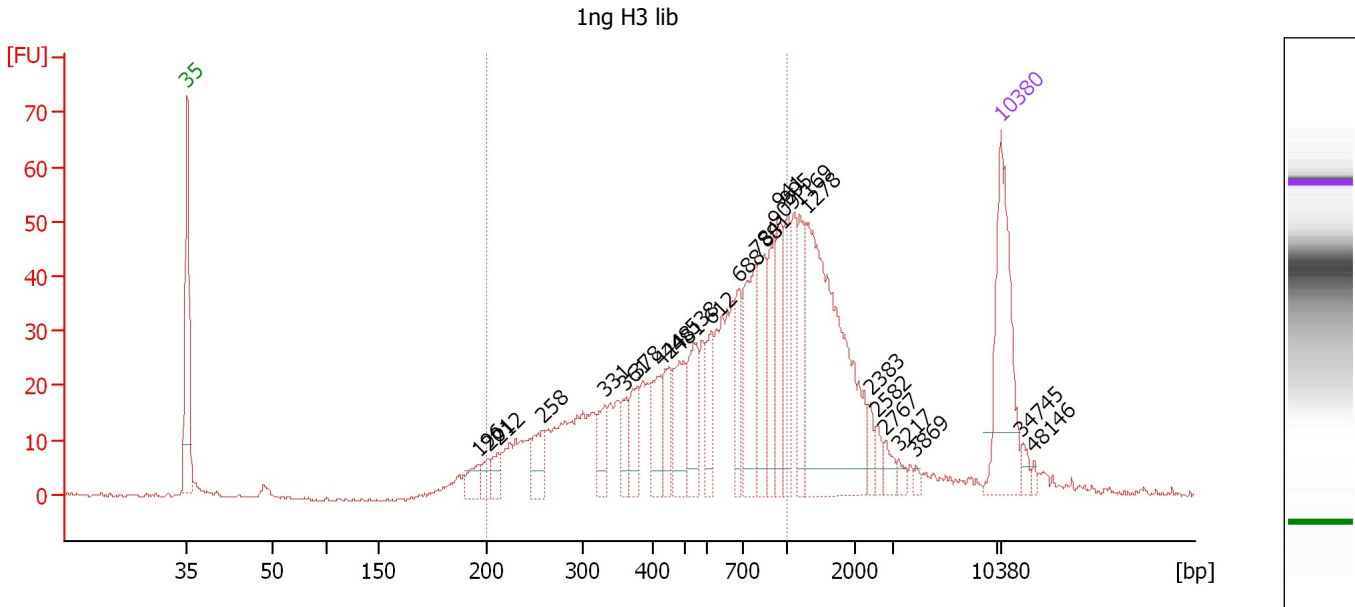
**Region table for sample 4 : EM bead purification**

From [bp]	Molarity [pmol/l]	Average Size [bp]	Conc. [pg/µl]	To [bp]	Corr. Area	% of Total	Size distribution in CV [%]	Color
200	1,864.4	529	485.80	1,000	480.7	46	44.2	

Assay Class: High Sensitivity DNA Assay  
 Data Path: C:\...ents and Settings\Bioanalyzer\2012-05-10\2012-05-10\_002.xad

Created: 5/10/2012 12:09:10 PM  
 Modified: 5/10/2012 12:50:32 PM

**Electropherogram Summary Continued ...**



**Overall Results for sample 5 : 1ng H3 lib**

Number of peaks found: 27                      Corr. Area 1: 706.7  
 Noise: 0.2

**Peak table for sample 5 : 1ng H3 lib**

Peak	Size [bp]	Conc. [pg/μl]	Molarity [pmol/l]	Observations
1	35	125.00	5,411.3	Lower Marker
2	196	17.91	138.4	
3	201	13.01	97.9	
4	212	13.69	97.9	
5	258	27.05	158.9	
6	331	26.78	122.5	
7	361	17.40	73.1	
8	378	26.86	107.6	
9	424	32.65	116.6	
10	448	28.29	95.6	
11	481	42.24	133.2	
12	538	41.02	115.6	
13	612	26.12	64.7	
14	688	28.83	63.5	
15	788	65.86	126.6	
16	841	42.93	77.3	
17	909	31.47	52.4	
18	941	41.22	66.3	
19	995	33.22	50.6	
20	1,169	32.04	41.5	
21	1,278	186.47	221.0	
22	2,383	8.05	5.1	
23	2,582	7.12	4.2	
24	2,767	7.45	4.1	
25	3,217	4.32	2.0	
26	3,869	2.47	1.0	

Assay Class: High Sensitivity DNA Assay  
 Data Path: C:\...ents and Settings\Bioanalyzer\2012-05-10\2012-05-10\_002.xad


Created: 5/10/2012 12:09:10 PM  
 Modified: 5/10/2012 12:50:32 PM

### Electropherogram Summary Continued ...

#### ... Peak table for sample 5 : 1ng H3 lib

Peak	Size [bp]	Conc. [pg/μl]	Molarity [pmol/l]	Observations
27	10,380	75.00	10.9	Upper Marker
28	34,745	0.00	0.0	
29	48,146	0.00	0.0	

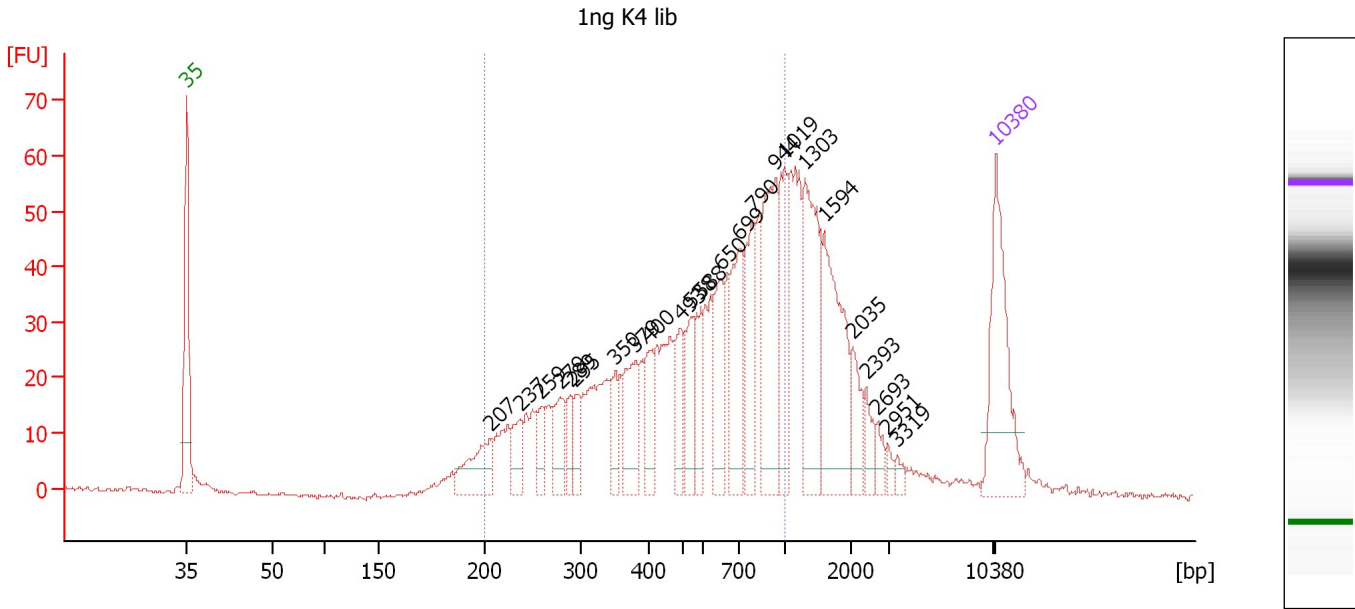
#### Region table for sample 5 : 1ng H3 lib

From [bp]	Molarity [pmol/l]	Average Size [bp]	Conc. [pg/μl]	To [bp]	Corr. Area	% of Total	Size distribution in CV [%]	Color
200	2,985.9	565	849.63	1,000	706.7	65	40.8	

Assay Class: High Sensitivity DNA Assay  
 Data Path: C:\...ents and Settings\Bioanalyzer\2012-05-10\2012-05-10\_002.xad

Created: 5/10/2012 12:09:10 PM  
 Modified: 5/10/2012 12:50:32 PM

**Electropherogram Summary Continued ...**



**Overall Results for sample 6 : 1ng K4 lib**

Number of peaks found: 24      Corr. Area 1: 854.4  
 Noise: 0.4

**Peak table for sample 6 : 1ng K4 lib**

Peak	Size [bp]	Conc. [pg/μl]	Molarity [pmol/l]	Observations
1	35	125.00	5,411.3	Lower Marker
2	207	55.55	405.6	
3	237	28.57	182.9	
4	259	25.12	146.8	
5	279	35.28	191.8	
6	289	20.38	106.8	
7	295	20.49	105.4	
8	350	23.57	102.1	
9	379	53.11	212.1	
10	400	34.63	131.3	
11	493	33.78	103.7	
12	538	36.49	102.8	
13	588	34.05	87.7	
14	650	48.65	113.5	
15	699	68.12	147.7	
16	790	57.54	110.3	
17	944	90.39	145.0	
18	1,019	56.39	83.8	
19	1,303	91.95	106.9	
20	1,594	94.31	89.6	
21	2,035	23.25	17.3	
22	2,393	13.85	8.8	
23	2,693	8.87	5.0	
24	2,951	4.92	2.5	
25	3,319	5.16	2.4	
26	10,380	75.00	10.9	Upper Marker

Assay Class: High Sensitivity DNA Assay  
Data Path: C:\...ents and Settings\Bioanalyzer\2012-05-10\2012-05-10\_002.xad

Created: 5/10/2012 12:09:10 PM  
Modified: 5/10/2012 12:50:32 PM

**Electropherogram Summary Continued ...**

... Region table for sample 6 :

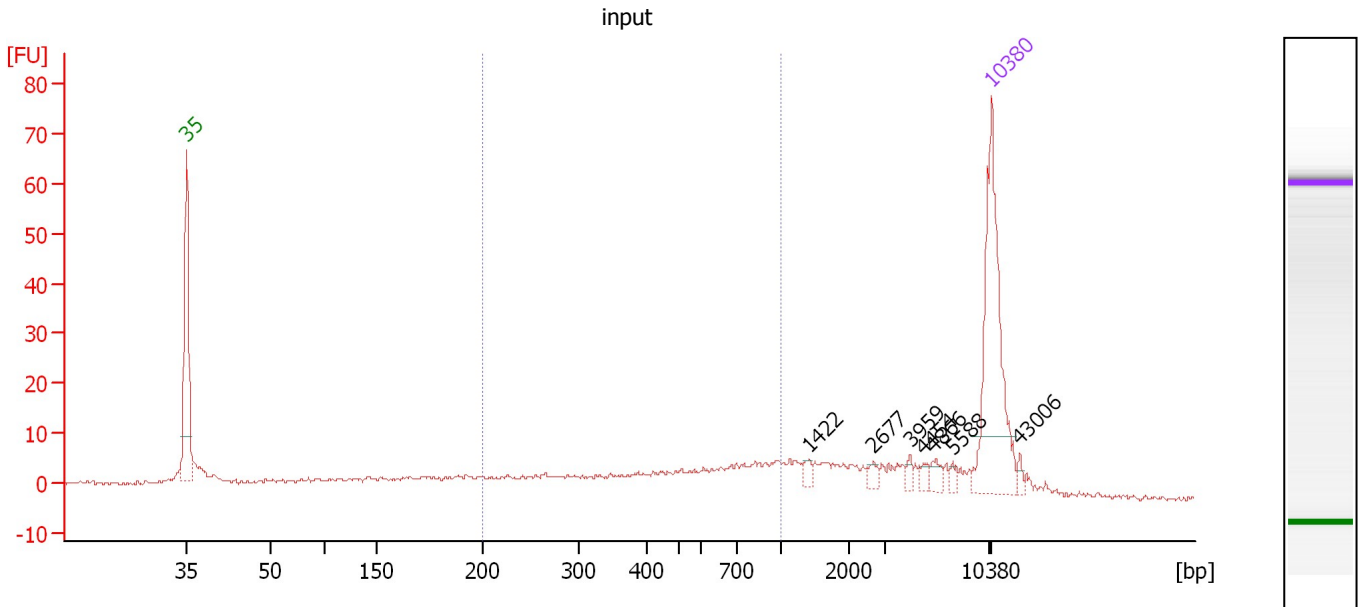
1ng K4 lib

From [bp]	Molarity [pmol/l]	Average Size [bp]	Conc. [pg/μl]	To [bp]	Corr. Area	% of Total	Size distribution in CV [%]	Color
200	3,779.3	558	1,053.84	1,000	854.4	66	41.7	■

Assay Class: High Sensitivity DNA Assay  
 Data Path: C:\...ents and Settings\Bioanalyzer\2012-05-10\2012-05-10\_002.xad

Created: 5/10/2012 12:09:10 PM  
 Modified: 5/10/2012 12:50:32 PM

**Electropherogram Summary Continued ...**



**Overall Results for sample 7 : input**

Number of peaks found: 7                      Corr. Area 1: 111.5  
 Noise: 0.4

**Peak table for sample 7 : input**

Peak	Size [bp]	Conc. [pg/μl]	Molarity [pmol/l]	Observations
1	35	125.00	5,411.3	Lower Marker
2	1,422	3.69	3.9	
3	2,677	3.51	2.0	
4	3,959	2.88	1.1	
5	4,454	3.16	1.1	
6	4,866	4.82	1.5	
7	5,588	2.22	0.6	
8	10,380	75.00	10.9	Upper Marker
9	43,006	0.00	0.0	

**Region table for sample 7 : input**

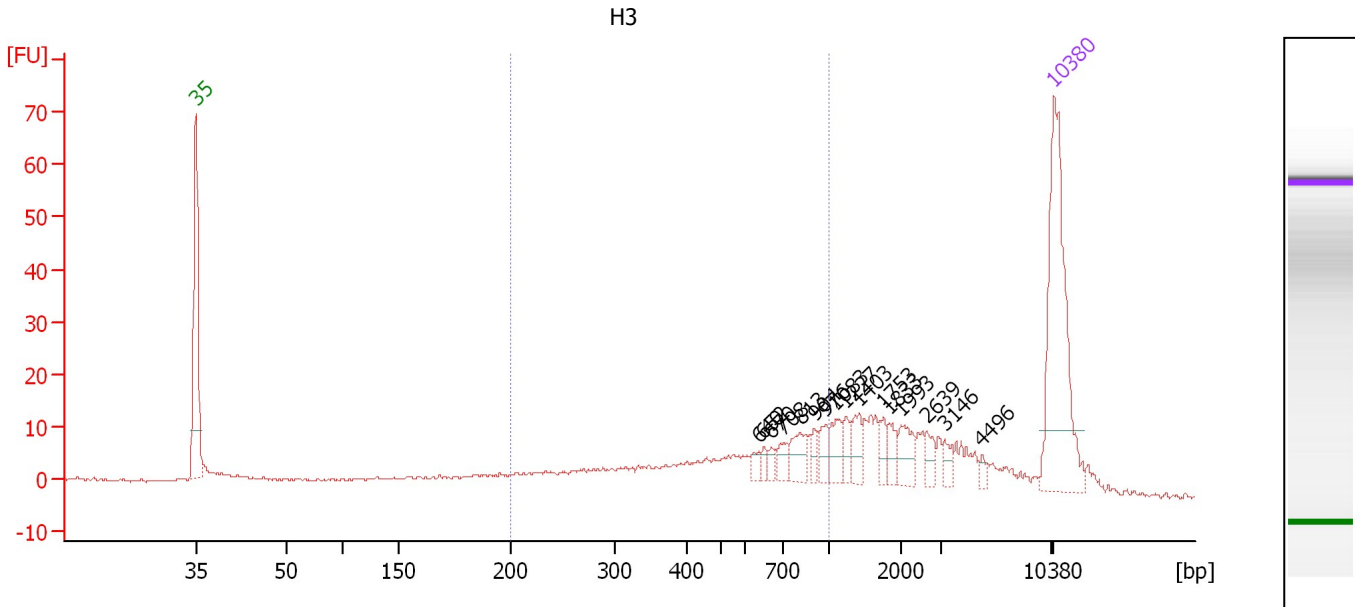
From [bp]	Molarity [pmol/l]	Average Size [bp]	Conc. [pg/μl]	To [bp]	Corr. Area	% of Total	Size distribution in CV [%]	Color
200	446.5	523	115.43	1,000	111.5	38	44.3	Blue



Assay Class: High Sensitivity DNA Assay  
 Data Path: C:\...ents and Settings\Bioanalyzer\2012-05-10\2012-05-10\_002.xad

Created: 5/10/2012 12:09:10 PM  
 Modified: 5/10/2012 12:50:32 PM

**Electropherogram Summary Continued ...**



**Overall Results for sample 8 : H3**

Number of peaks found: 16                      Corr. Area 1: 176.8  
 Noise: 0.2

**Peak table for sample 8 : H3**

Peak	Size [bp]	Conc. [pg/μl]	Molarity [pmol/l]	Observations
1	35	125.00	5,411.3	Lower Marker
2	640	4.53	10.7	
3	652	3.76	8.7	
4	670	4.21	9.5	
5	708	6.88	14.7	
6	813	12.78	23.8	
7	904	5.51	9.2	
8	976	8.08	12.5	
9	1,083	11.38	15.9	
10	1,227	7.31	9.0	
11	1,403	9.19	9.9	
12	1,753	5.71	4.9	
13	1,833	6.43	5.3	
14	1,993	11.80	9.0	
15	2,639	6.19	3.6	
16	3,146	4.99	2.4	
17	4,496	2.38	0.8	
18	10,380	75.00	10.9	Upper Marker

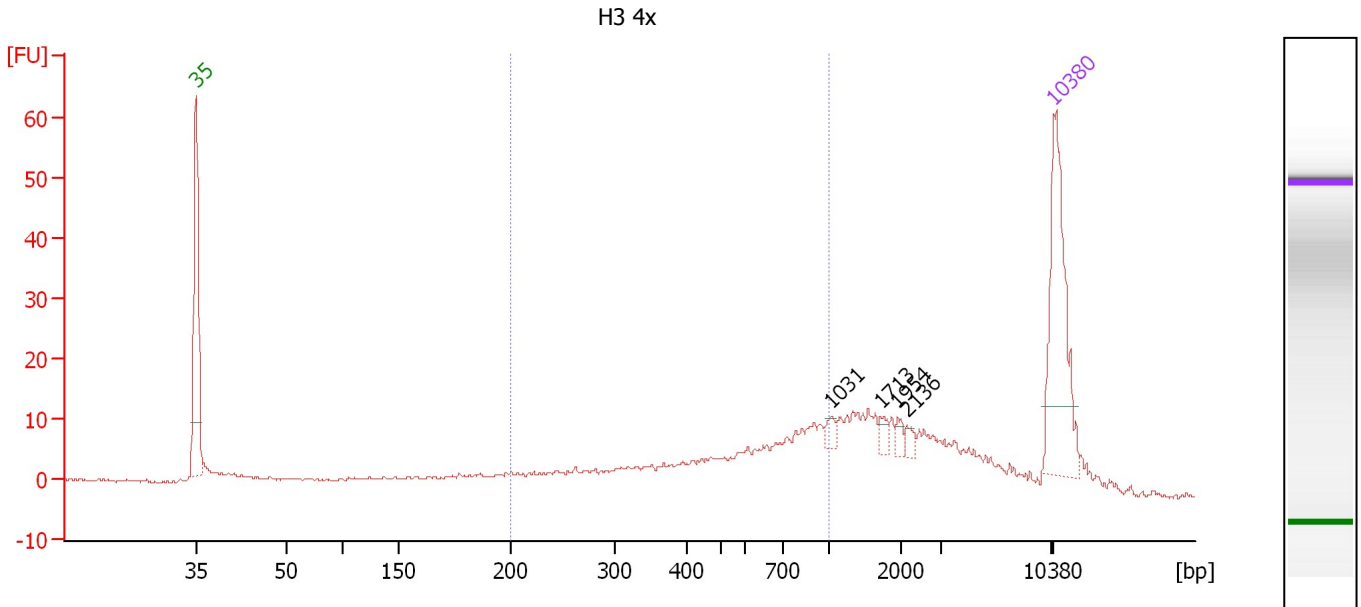
**Region table for sample 8 : H3**

From [bp]	Molarity [pmol/l]	Average Size [bp]	Conc. [pg/μl]	To [bp]	Corr. Area	% of Total	Size distribution in CV [%]	Color
200	638.3	559	176.59	1,000	176.8	42	42.2	Blue

Assay Class: High Sensitivity DNA Assay  
 Data Path: C:\...ents and Settings\Bioanalyzer\2012-05-10\2012-05-10\_002.xad

Created: 5/10/2012 12:09:10 PM  
 Modified: 5/10/2012 12:50:32 PM

**Electropherogram Summary Continued ...**



**Overall Results for sample 9 : H3 4x**

Number of peaks found: 4                      Corr. Area 1: 155.9  
 Noise: 0.2

**Peak table for sample 9 : H3 4x**

Peak	Size [bp]	Conc. [pg/μl]	Molarity [pmol/l]	Observations
1	35	125.00	5,411.3	Lower Marker
2	1,031	5.34	7.8	
3	1,713	5.16	4.6	
4	1,954	4.37	3.4	
5	2,136	4.23	3.0	
6	10,380	75.00	10.9	Upper Marker

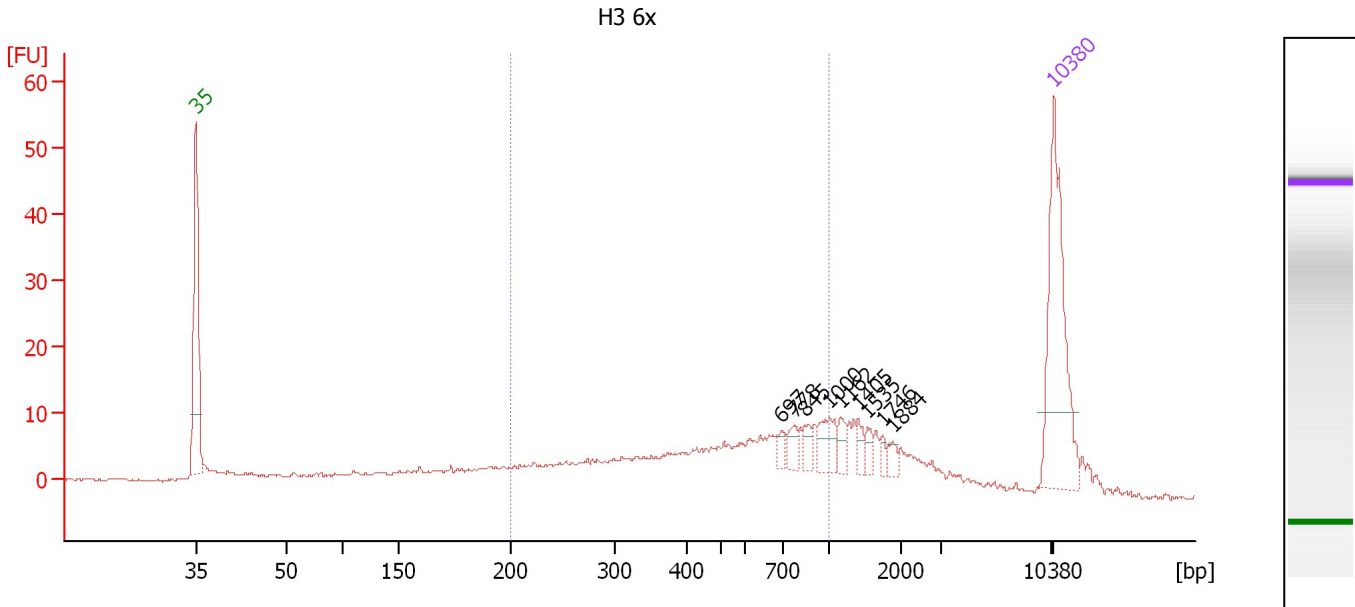
**Region table for sample 9 : H3 4x**

From [bp]	Molarity [pmol/l]	Average Size [bp]	Conc. [pg/μl]	To [bp]	Corr. Area	% of Total	Size distribution in CV [%]	Color
200	753.1	565	211.37	1,000	155.9	41	41.5	Blue

Assay Class: High Sensitivity DNA Assay  
 Data Path: C:\...ents and Settings\Bioanalyzer\2012-05-10\2012-05-10\_002.xad

Created: 5/10/2012 12:09:10 PM  
 Modified: 5/10/2012 12:50:32 PM

**Electropherogram Summary Continued ...**



**Overall Results for sample 10 : H3 6x**

Number of peaks found: 9                      Corr. Area 1: 181.6  
 Noise: 0.2

**Peak table for sample 10 : H3 6x**

Peak	Size [bp]	Conc. [pg/μl]	Molarity [pmol/l]	Observations
1	35	125.00	5,411.3	Lower Marker
2	697	5.05	11.0	
3	778	9.37	18.2	
4	845	7.12	12.8	
5	1,000	15.31	23.2	
6	1,162	7.05	9.2	
7	1,405	5.66	6.1	
8	1,535	5.16	5.1	
9	1,746	3.68	3.2	
10	1,884	4.48	3.6	
11	10,380	75.00	10.9	Upper Marker

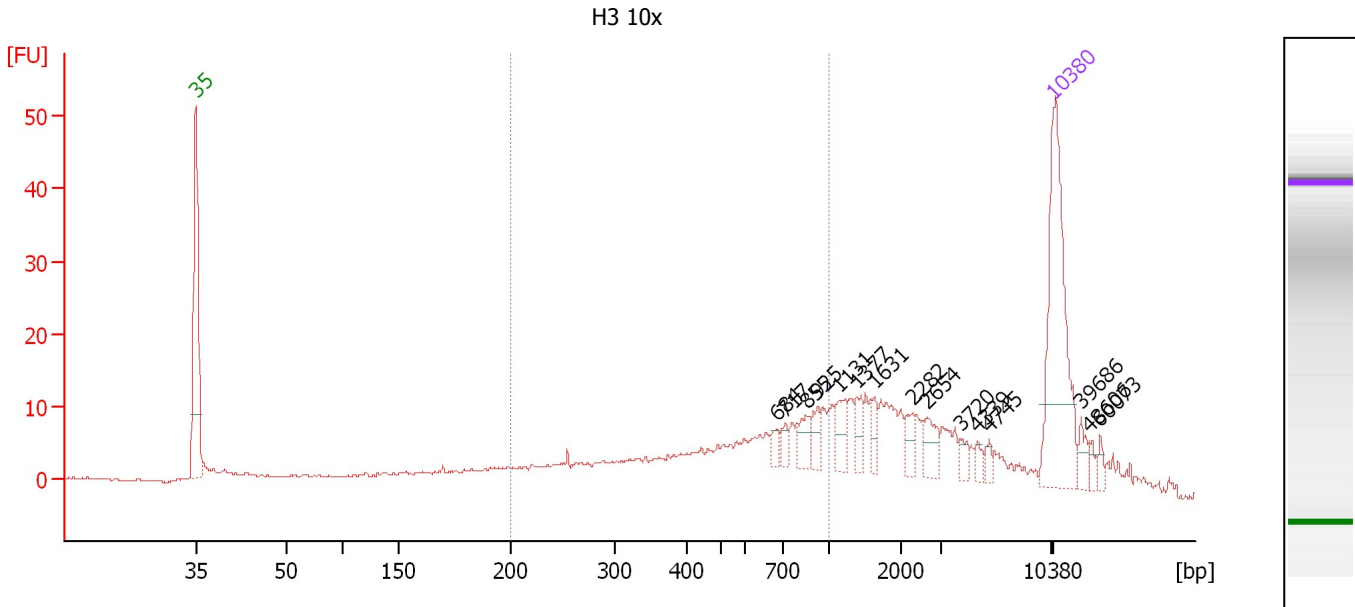
**Region table for sample 10 : H3 6x**

From [bp]	Molarity [pmol/l]	Average Size [bp]	Conc. [pg/μl]	To [bp]	Corr. Area	% of Total	Size distribution in CV [%]	Color
200	992.7	534	263.64	1,000	181.6	51	43.2	Blue

Assay Class: High Sensitivity DNA Assay  
 Data Path: C:\...ents and Settings\Bioanalyzer\2012-05-10\2012-05-10\_002.xad

Created: 5/10/2012 12:09:10 PM  
 Modified: 5/10/2012 12:50:32 PM

**Electropherogram Summary Continued ...**



**Overall Results for sample 11 : H3 10x**

Number of peaks found: 15      Corr. Area 1: 153.6  
 Noise: 0.2

**Peak table for sample 11 : H3 10x**

Peak	Size [bp]	Conc. [pg/μl]	Molarity [pmol/l]	Observations
1	35	125.00	5,411.3	Lower Marker
2	684	4.62	10.2	
3	717	5.18	11.0	
4	855	10.43	18.5	
5	925	8.59	14.1	
6	1,131	12.29	16.5	
7	1,377	8.79	9.7	
8	1,631	7.25	6.7	
9	2,282	6.95	4.6	
10	2,654	10.26	5.9	
11	3,720	4.71	1.9	
12	4,339	3.69	1.3	
13	4,745	3.76	1.2	
14	10,380	75.00	10.9	Upper Marker
15	39,686	0.00	0.0	
16	48,606	0.00	0.0	
17	60,073	0.00	0.0	

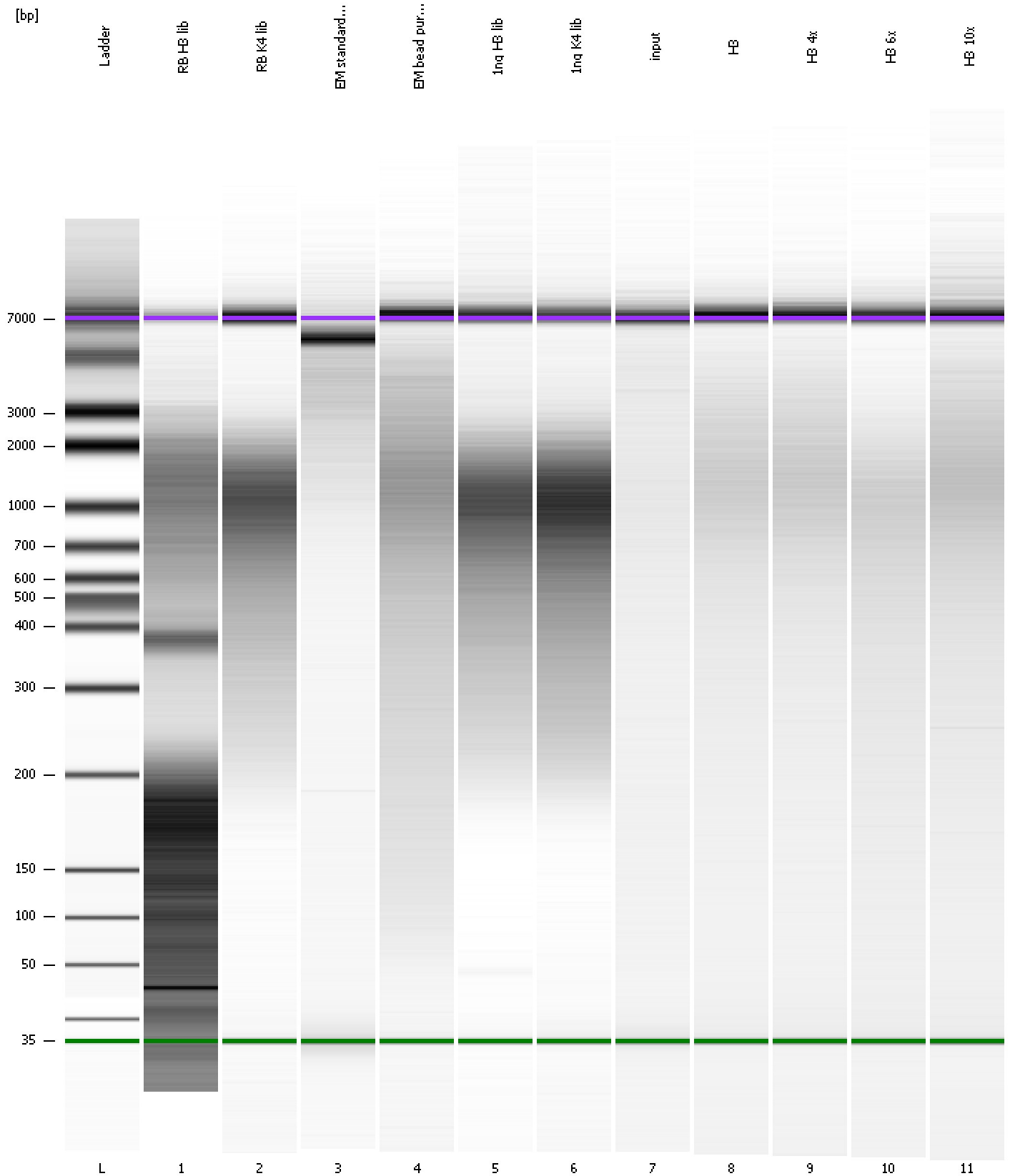
**Region table for sample 11 : H3 10x**

From [bp]	Molarity [pmol/l]	Average Size [bp]	Conc. [pg/μl]	To [bp]	Corr. Area	% of Total	Size distribution in CV [%]	Color
200	809.4	556	223.16	1,000	153.6	41	42.2	Blue

Assay Class: High Sensitivity DNA Assay  
Data Path: C:\...ents and Settings\Bioanalyzer\2012-05-10\2012-05-10\_002.xad

Created: 5/10/2012 12:09:10 PM  
Modified: 5/10/2012 12:50:32 PM

**Gel Image**



Assay Class: High Sensitivity DNA Assay  
 Data Path: C:\...ents and Settings\Bioanalyzer\2012-05-10\2012-05-10\_002.xad

Created: 5/10/2012 12:09:10 PM  
 Modified: 5/10/2012 12:50:32 PM

**Run Logbook**

Description	Number	Source	Category	Sub Category	Time	Time Zone	User	Host
Run ended on port 1 (Number of wells acquired: 12)		Instrument	Run		5/10/2012 12:50:29 PM	(GMT --07:00) Pacific Standard Time	UC Davis	D8XSMGH1
Run started on port 1 (File: C:\Documents and Settings\Bioanalyzer\2012-05-10\2012-05-10_002.xad)		Instrument	Run		5/10/2012 12:09:15 PM	(GMT --07:00) Pacific Standard Time	UC Davis	D8XSMGH1
Product Number : G2938B		Instrument	Run		5/10/2012 12:09:15 PM	(GMT --07:00) Pacific Standard Time	UC Davis	D8XSMGH1
Name :		Instrument	Run		5/10/2012 12:09:15 PM	(GMT --07:00) Pacific Standard Time	UC Davis	D8XSMGH1
Vendor : Agilent Technologies		Instrument	Run		5/10/2012 12:09:15 PM	(GMT --07:00) Pacific Standard Time	UC Davis	D8XSMGH1
Serial# : DE13701086		Instrument	Run		5/10/2012 12:09:15 PM	(GMT --07:00) Pacific Standard Time	UC Davis	D8XSMGH1
Firmware : C.01.069		Instrument	Run		5/10/2012 12:09:15 PM	(GMT --07:00) Pacific Standard Time	UC Davis	D8XSMGH1
Cartridge : Electrode		Instrument	Run		5/10/2012 12:09:15 PM	(GMT --07:00) Pacific Standard Time	UC Davis	D8XSMGH1