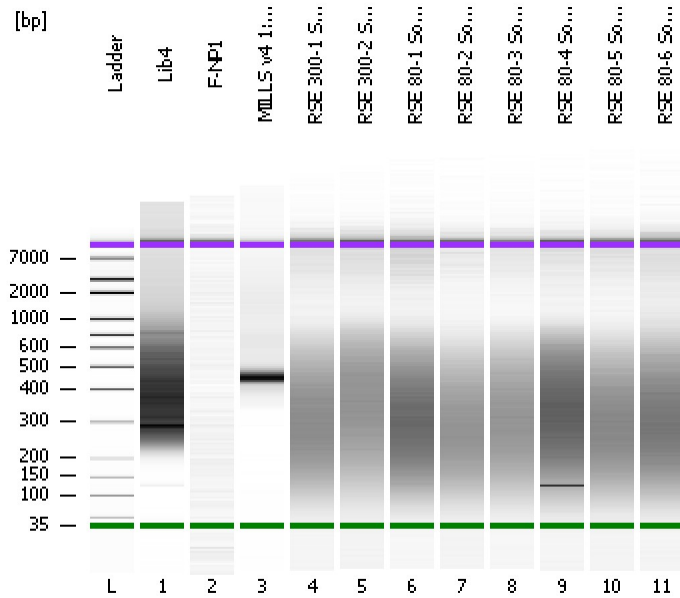


Assay Class: High Sensitivity DNA Assay  
Data Path: C:\...ents and Settings\Bioanalyzer\2012-05-14\2012-05-14\_003.xad

Created: 5/14/2012 3:16:33 PM  
Modified: 5/14/2012 3:59:15 PM

### Electrophoresis File Run Summary



#### Instrument Information:

Instrument Name: DE13701086      Firmware: C.01.069  
Serial#: DE13701086      Type: G2938B

#### Assay Information:

Assay Origin Path: C:\Program Files\Agilent\2100 bioanalyzer\2100 expert\assays\dsDNA\High Sensitivity DNA.xsy  
Assay Class: High Sensitivity DNA Assay  
Version: 1.03  
Assay Comments: Copyright © 2003-2010 Agilent Technologies

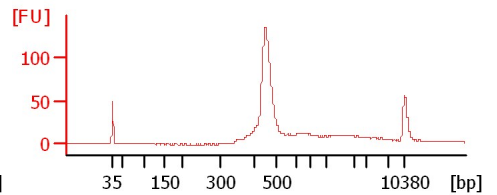
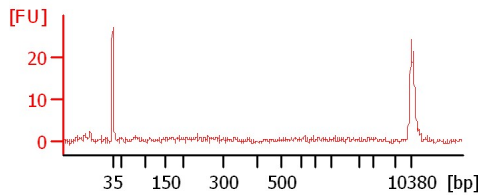
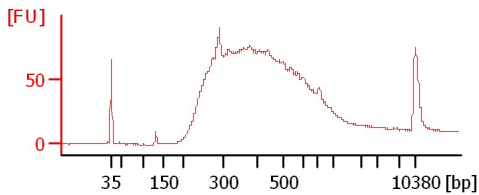
#### Chip Information:

Chip Lot #:   
Reagent Kit Lot #:   
Chip Comments:

Lib4

F-NP1

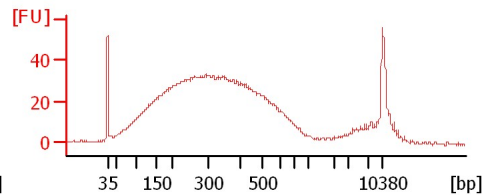
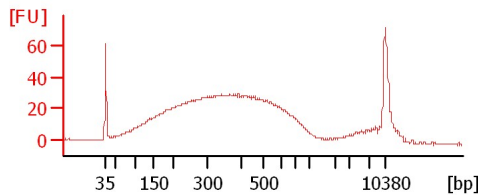
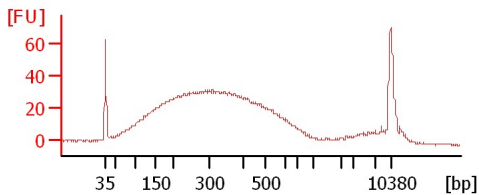
MILLS v4 1:10 0508



RSE 300-1 Soni 1:10

RSE 300-2 Soni 1:10

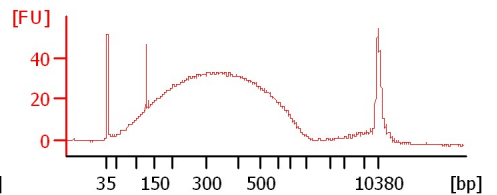
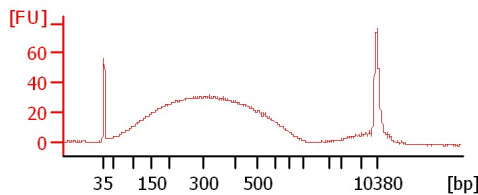
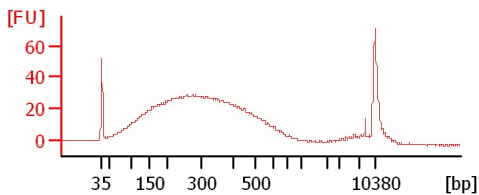
RSE 80-1 Soni 1:10



RSE 80-2 Soni 1:10

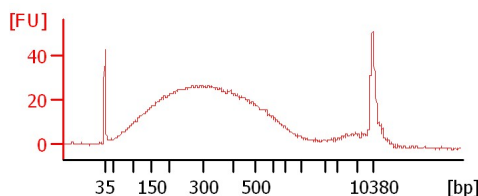
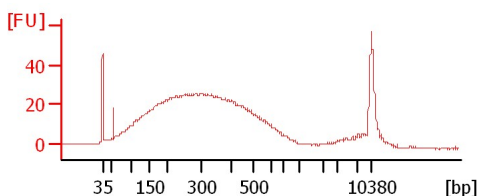
RSE 80-3 Soni 1:10

RSE 80-4 Soni 1:10



RSE 80-5 Soni 1:10

RSE 80-6 Soni 1:10



Assay Class: High Sensitivity DNA Assay  
Data Path: C:\...ents and Settings\Bioanalyzer\2012-05-14\2012-05-14\_003.xad

Created: 5/14/2012 3:16:33 PM  
Modified: 5/14/2012 3:59:15 PM

**Electrophoresis File Run Summary (Chip Summary)**

Sample Name	Sample Comment	Rest. Digest	Status	Observation	Result Label	Result Color
Lib4		<input type="checkbox"/>	✓			
F-NP1		<input type="checkbox"/>	✓			
MILLS v4 1:10 0508		<input type="checkbox"/>	✓			
RSE 300-1 Soni 1:10		<input type="checkbox"/>	✓			
RSE 300-2 Soni 1:10		<input type="checkbox"/>	✓			
RSE 80-1 Soni 1:10		<input type="checkbox"/>	✓			
RSE 80-2 Soni 1:10		<input type="checkbox"/>	✓			
RSE 80-3 Soni 1:10		<input type="checkbox"/>	✓			
RSE 80-4 Soni 1:10		<input type="checkbox"/>	✓			
RSE 80-5 Soni 1:10		<input type="checkbox"/>	✓			
RSE 80-6 Soni 1:10		<input type="checkbox"/>	✓			
Ladder		<input type="checkbox"/>	✓			

**Chip Lot #**

**Reagent Kit Lot #**

**Chip Comments :**

Assay Class: High Sensitivity DNA Assay  
Data Path: C:\...ents and Settings\Bioanalyzer\2012-05-14\2012-05-14\_003.xad

Created: 5/14/2012 3:16:33 PM  
Modified: 5/14/2012 3:59:15 PM

**Electrophoresis Assay Details**

**General Analysis Settings**

Number of Available Sample and Ladder Wells (Max.) : 12  
Minimum Visible Range [s] : 32  
Maximum Visible Range [s] : 138  
Start Analysis Time Range [s] : 33  
End Analysis Time Range [s] : 137.5  
Ladder Concentration [pg/μl] : 1950  
Uses Standard Area for Ladder Fragments  
Lower Marker Concentration [pg/μl] : 125  
Upper Marker Concentration [pg/μl] : 75  
Used Upper Marker for Quantitation  
Standard Curve Fit is Point to Point  
Show Data Aligned to Lower and Upper Marker

**Integrator Settings**

Integration Start Time [s] : 33.05  
Integration End Time [s] : 137  
Slope Threshold : 0.8  
Height Threshold [FU] : 5  
Area Threshold : 0.1  
Width Threshold [s] : 0.6  
Baseline Plateau [s] : 0.5

**Filter Settings**

Filter Width [s] : 0.5  
Polynomial Order : 4

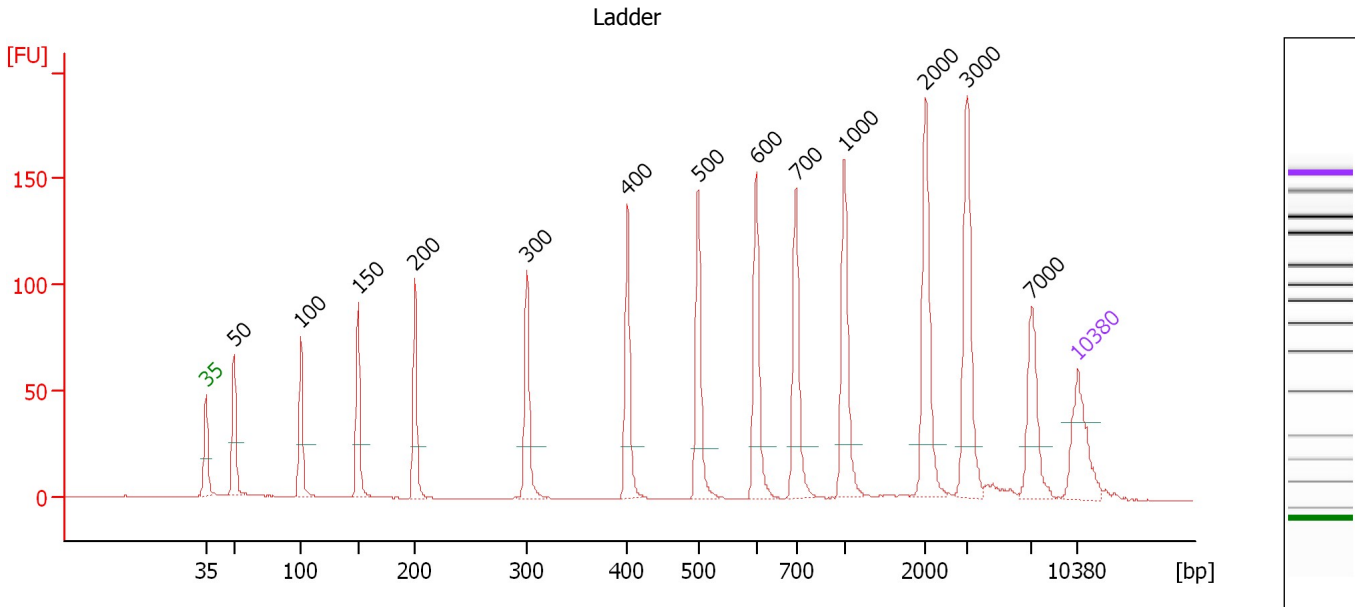
**Ladder**

Ladder Peak	Size	Area
1	35	160
2	50	210
3	100	208
4	150	221
5	200	242
6	300	270
7	400	305
8	500	306
9	600	336
10	700	321
11	1000	366
12	2000	413
13	3000	411
14	7000	400
15	10380	214

Assay Class: High Sensitivity DNA Assay  
 Data Path: C:\...ents and Settings\Bioanalyzer\2012-05-14\2012-05-14\_003.xad

Created: 5/14/2012 3:16:33 PM  
 Modified: 5/14/2012 3:59:15 PM

**Electropherogram Summary**



**Overall Results for Ladder**

Noise: 0.1

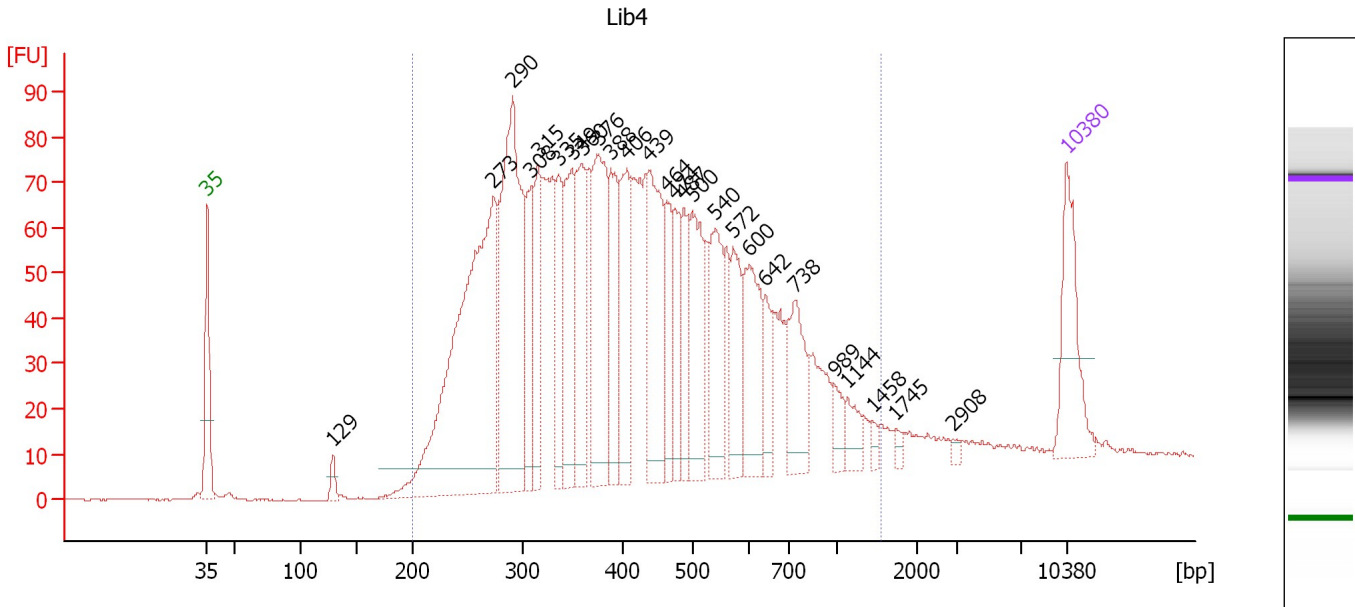
**Peak table for Ladder**

Peak	Size [bp]	Conc. [pg/μl]	Molarity [pmol/l]	Observations
1	35	125.00	5,411.3	Lower Marker
2	50	150.00	4,545.5	Ladder Peak
3	100	150.00	2,272.7	Ladder Peak
4	150	150.00	1,515.2	Ladder Peak
5	200	150.00	1,136.4	Ladder Peak
6	300	150.00	757.6	Ladder Peak
7	400	150.00	568.2	Ladder Peak
8	500	150.00	454.5	Ladder Peak
9	600	150.00	378.8	Ladder Peak
10	700	150.00	324.7	Ladder Peak
11	1,000	150.00	227.3	Ladder Peak
12	2,000	150.00	113.6	Ladder Peak
13	3,000	150.00	75.8	Ladder Peak
14	7,000	150.00	32.5	Ladder Peak
15	10,380	75.00	10.9	Upper Marker

Assay Class: High Sensitivity DNA Assay  
 Data Path: C:\...ents and Settings\Bioanalyzer\2012-05-14\2012-05-14\_003.xad

Created: 5/14/2012 3:16:33 PM  
 Modified: 5/14/2012 3:59:15 PM

**Electropherogram Summary Continued ...**



**Overall Results for sample 1 : Lib4**

Number of peaks found: 26                      Corr. Area 1: 2,442.8  
 Noise: 0.2

**Peak table for sample 1 : Lib4**

Peak	Size [bp]	Conc. [pg/μl]	Molarity [pmol/l]	Observations
1	35	125.00	5,411.3	Lower Marker
2	129	15.00	176.2	
3	273	559.34	3,100.5	
4	290	356.41	1,860.5	
5	308	97.50	478.9	
6	315	94.34	453.9	
7	335	82.37	372.2	
8	349	126.23	547.5	
9	360	109.07	459.7	
10	376	173.39	698.4	
11	388	99.05	386.8	
12	406	105.89	395.4	
13	439	145.61	503.0	
14	464	55.99	182.9	
15	474	66.67	212.9	
16	487	57.18	177.7	
17	500	108.71	329.7	
18	540	99.17	278.3	
19	572	68.20	180.7	
20	600	103.74	261.9	
21	642	40.56	95.7	
22	738	77.50	159.2	
23	989	18.55	28.4	
24	1,144	21.14	28.0	
25	1,458	7.12	7.4	
26	1,745	5.75	5.0	

Assay Class: High Sensitivity DNA Assay  
Data Path: C:\...ents and Settings\Bioanalyzer\2012-05-14\2012-05-14\_003.xad

Created: 5/14/2012 3:16:33 PM  
Modified: 5/14/2012 3:59:15 PM

**Electropherogram Summary Continued ...****... Peak table for sample 1 : Lib4**

Peak	Size [bp]	Conc. [pg/μl]	Molarity [pmol/l]	Observations
27	2,908	3.57	1.9	
28	▶ 10,380	75.00	10.9	Upper Marker

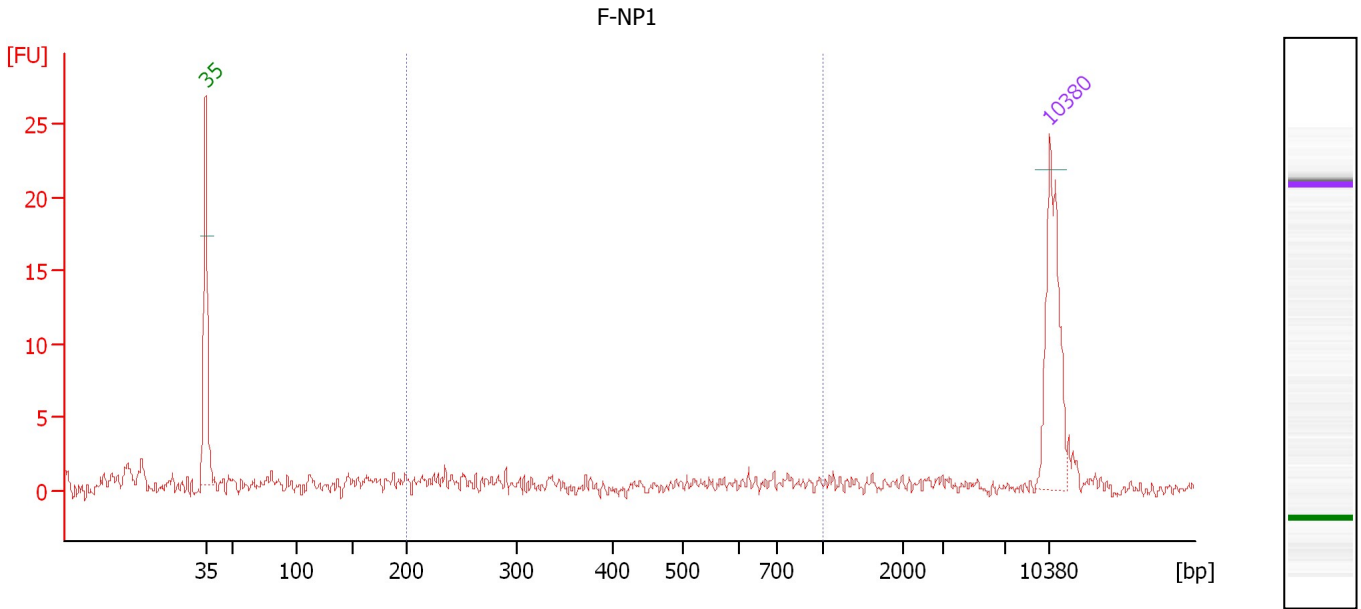
**Region table for sample 1 : Lib4**

From [bp]	Molarity [pmol/l]	Average Size [bp]	Conc. [pg/μl]	To [bp]	Corr. Area	% of Total	Size distribution in CV [%]	Color
200	13,056.7	450	3,184.26	1,569	2,442.8	97	45.0	■

Assay Class: High Sensitivity DNA Assay  
 Data Path: C:\...ents and Settings\Bioanalyzer\2012-05-14\2012-05-14\_003.xad

Created: 5/14/2012 3:16:33 PM  
 Modified: 5/14/2012 3:59:15 PM

**Electropherogram Summary Continued ...**



**Overall Results for sample 2 : F-NP1**

Number of peaks found: 0                      Corr. Area 1: 28.4  
 Noise: 0.6

**Peak table for sample 2 : F-NP1**

Peak	Size [bp]	Conc. [pg/μl]	Molarity [pmol/l]	Observations
1	35	125.00	5,411.3	Lower Marker
2	10,380	75.00	10.9	Upper Marker

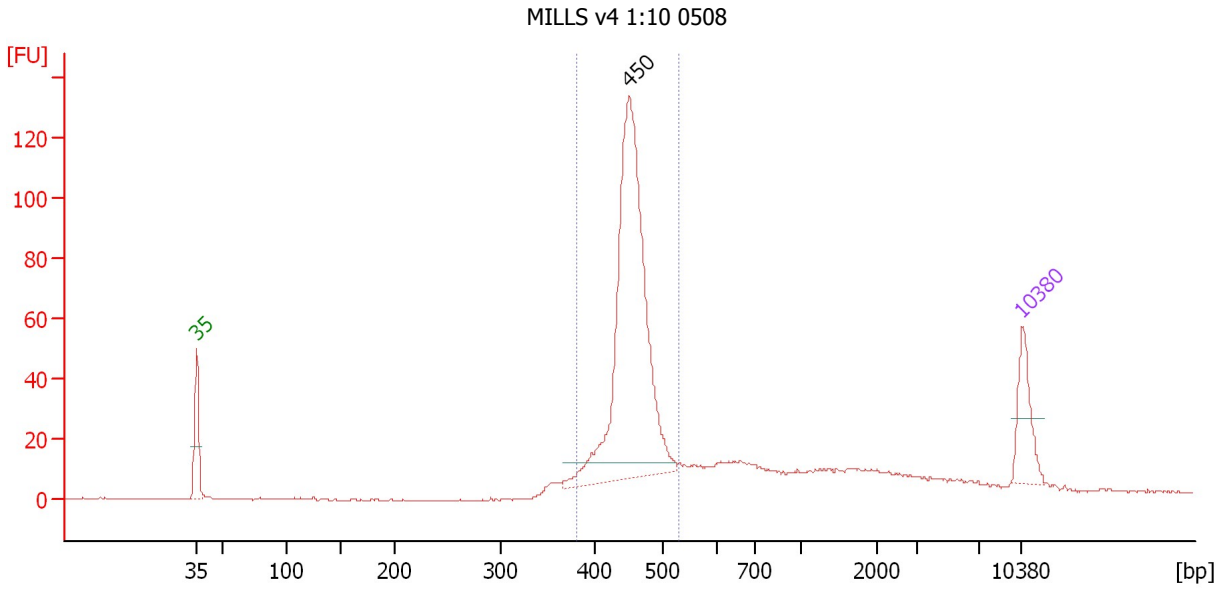
**Region table for sample 2 : F-NP1**

From [bp]	Molarity [pmol/l]	Average Size [bp]	Conc. [pg/μl]	To [bp]	Corr. Area	% of Total	Size distribution in CV [%]	Color
200	559.5	433	121.28	1,000	28.4	31	46.6	Blue

Assay Class: High Sensitivity DNA Assay  
 Data Path: C:\...ents and Settings\Bioanalyzer\2012-05-14\2012-05-14\_003.xad

Created: 5/14/2012 3:16:33 PM  
 Modified: 5/14/2012 3:59:15 PM

**Electropherogram Summary Continued ...**



**Overall Results for sample 3 : MILLS v4 1:10 0508**

Number of peaks found: 1                      Corr. Area 1: 513.6  
 Noise: 0.3

**Peak table for sample 3 : MILLS v4 1:10 0508**

Peak	Size [bp]	Conc. [pg/μl]	Molarity [pmol/l]	Observations
1	35	125.00	5,411.3	Lower Marker
2	450	835.25	2,811.9	
3	10,380	75.00	10.9	Upper Marker

**Region table for sample 3 : MILLS v4 1:10 0508**

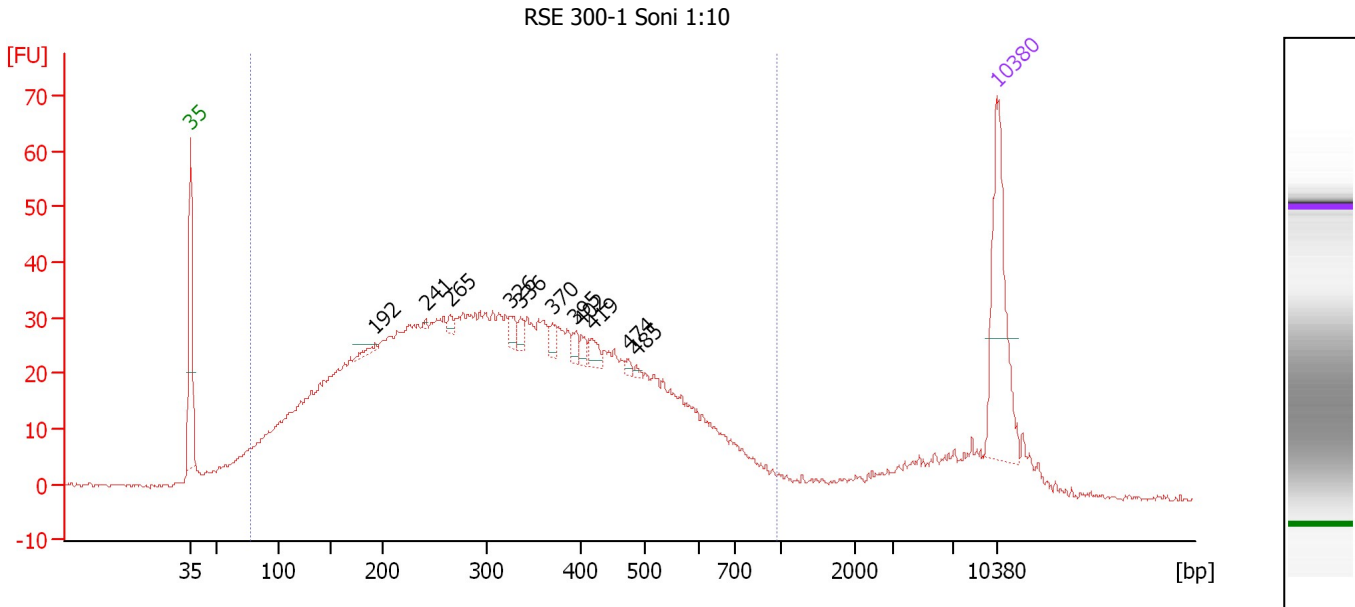
From [bp]	Molarity [pmol/l]	Average Size [bp]	Conc. [pg/μl]	To [bp]	Corr. Area	% of Total	Size distribution in CV [%]	Color
381	3,164.5	453	944.59	529	513.6	67	5.9	Blue



Assay Class: High Sensitivity DNA Assay  
 Data Path: C:\...ents and Settings\Bioanalyzer\2012-05-14\2012-05-14\_003.xad

Created: 5/14/2012 3:16:33 PM  
 Modified: 5/14/2012 3:59:15 PM

**Electropherogram Summary Continued ...**



**Setpoint Deviations for sample 4 : RSE 300-1 Soni 1:10**

Height Threshold [FU] : 1

**Overall Results for sample 4 : RSE 300-1 Soni 1:10**

Number of peaks found: 11                      Corr. Area 1: 1,531.5  
 Noise: 0.4

**Peak table for sample 4 : RSE 300-1 Soni 1:10**

Peak	Size [bp]	Conc. [pg/μl]	Molarity [pmol/l]	Observations
1	35	125.00	5,411.3	Lower Marker
2	192	5.78	45.5	
3	241	1.65	10.4	
4	265	4.32	24.7	
5	326	9.83	45.8	
6	336	6.84	30.8	
7	370	6.78	27.8	
8	395	6.26	24.0	
9	402	5.88	22.2	
10	419	8.85	32.0	
11	474	2.68	8.6	
12	485	1.97	6.2	
13	10,380	75.00	10.9	Upper Marker

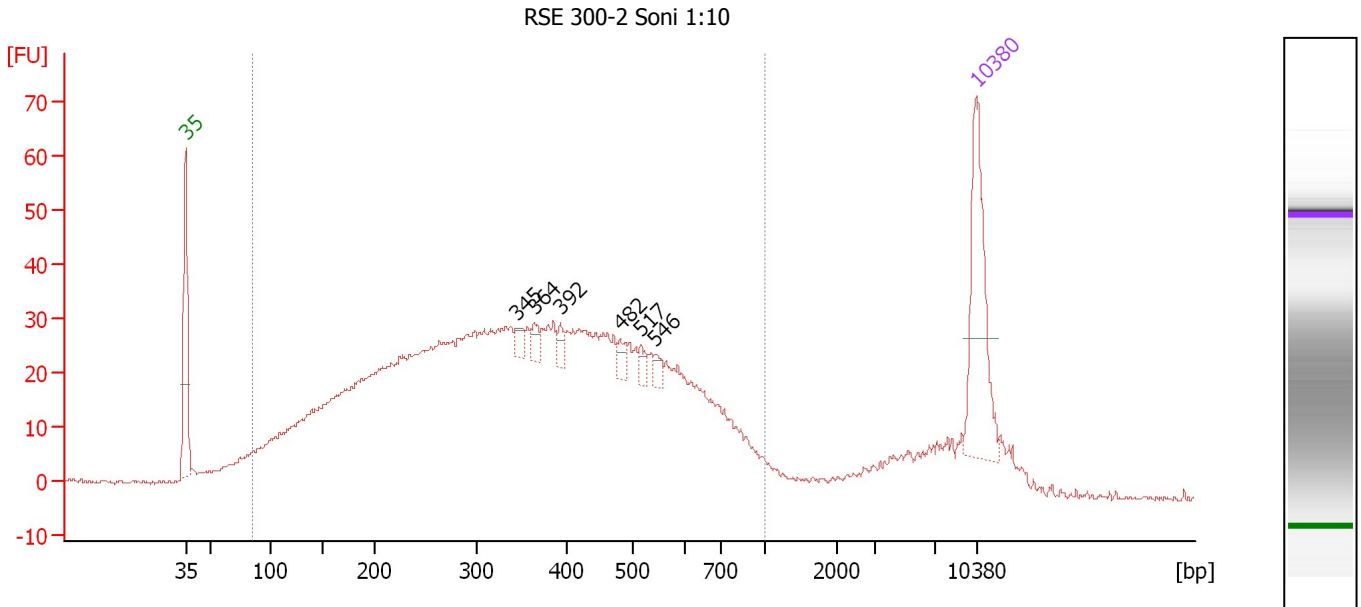
**Region table for sample 4 : RSE 300-1 Soni 1:10**

From [bp]	Molarity [pmol/l]	Average Size [bp]	Conc. [pg/μl]	To [bp]	Corr. Area	% of Total	Size distribution in CV [%]	Color
77	15,735.9	333	2,385.96	971	1,531.5	91	46.5	Blue

Assay Class: High Sensitivity DNA Assay  
 Data Path: C:\...ents and Settings\Bioanalyzer\2012-05-14\2012-05-14\_003.xad

Created: 5/14/2012 3:16:33 PM  
 Modified: 5/14/2012 3:59:15 PM

**Electropherogram Summary Continued ...**



**Overall Results for sample 5 : RSE 300-2 Soni 1:10**

Number of peaks found: 6                      Corr. Area 1: 1,404.6  
 Noise: 0.4

**Peak table for sample 5 : RSE 300-2 Soni 1:10**

Peak	Size [bp]	Conc. [pg/μl]	Molarity [pmol/l]	Observations
1	35	125.00	5,411.3	Lower Marker
2	345	9.24	40.6	
3	364	9.72	40.5	
4	392	7.89	30.5	
5	482	9.25	29.1	
6	517	7.97	23.4	
7	546	7.69	21.3	
8	10,380	75.00	10.9	Upper Marker

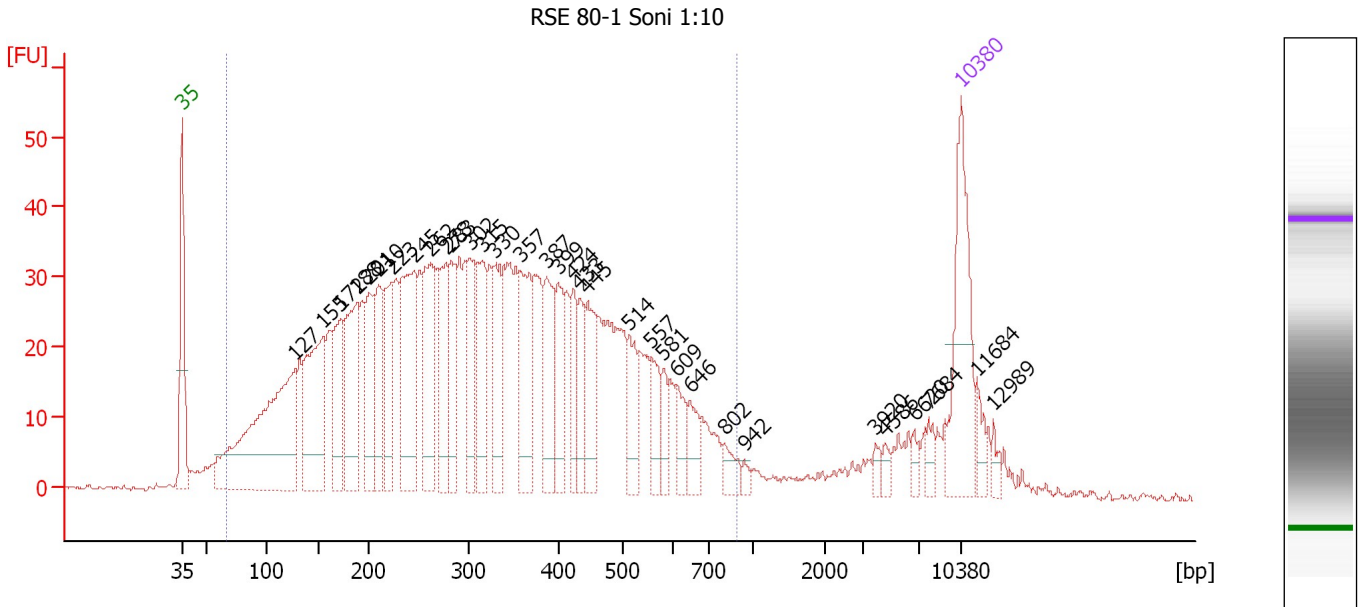
**Region table for sample 5 : RSE 300-2 Soni 1:10**

From [bp]	Molarity [pmol/l]	Average Size [bp]	Conc. [pg/μl]	To [bp]	Corr. Area	% of Total	Size distribution in CV [%]	Color
84	11,557.0	374	1,974.83	1,000	1,404.6	91	45.6	Blue

Assay Class: High Sensitivity DNA Assay  
 Data Path: C:\...ents and Settings\Bioanalyzer\2012-05-14\2012-05-14\_003.xad

Created: 5/14/2012 3:16:33 PM  
 Modified: 5/14/2012 3:59:15 PM

**Electropherogram Summary Continued ...**



**Overall Results for sample 6 : RSE 80-1 Soni 1:10**

Number of peaks found: 33                      Corr. Area 1: 1,578.6  
 Noise: 0.4

**Peak table for sample 6 : RSE 80-1 Soni 1:10**

Peak	Size [bp]	Conc. [pg/μl]	Molarity [pmol/l]	Observations
1	35	125.00	5,411.3	Lower Marker
2	127	280.23	3,333.4	
3	155	139.37	1,363.0	
4	172	67.83	596.3	
5	188	99.95	804.8	
6	201	68.21	514.5	
7	210	60.75	437.3	
8	223	67.84	460.4	
9	245	126.94	784.7	
10	262	86.88	503.2	
11	278	68.51	373.9	
12	283	53.35	285.7	
13	302	55.36	278.0	
14	315	63.44	305.4	
15	330	56.87	261.4	
16	357	76.10	322.6	
17	387	60.03	235.0	
18	399	44.06	167.1	
19	424	31.98	114.4	
20	433	33.06	115.7	
21	445	47.19	160.5	
22	514	36.02	106.2	
23	557	26.44	71.9	
24	581	16.15	42.1	
25	609	21.15	52.7	
26	646	20.86	48.9	

Assay Class: High Sensitivity DNA Assay  
 Data Path: C:\...ents and Settings\Bioanalyzer\2012-05-14\2012-05-14\_003.xad


Created: 5/14/2012 3:16:33 PM  
 Modified: 5/14/2012 3:59:15 PM

**Electropherogram Summary Continued ...**

**... Peak table for sample 6 : RSE 80-1 Soni 1:10**

Peak	Size [bp]	Conc. [pg/µl]	Molarity [pmol/l]	Observations
27	802	13.62	25.7	
28	942	4.51	7.2	
29	3,920	5.36	2.1	
30	4,586	5.26	1.7	
31	6,620	5.29	1.2	
32	7,684	8.16	1.6	
33	10,380	75.00	10.9	Upper Marker
34	11,684	0.00	0.0	
35	12,989	0.00	0.0	

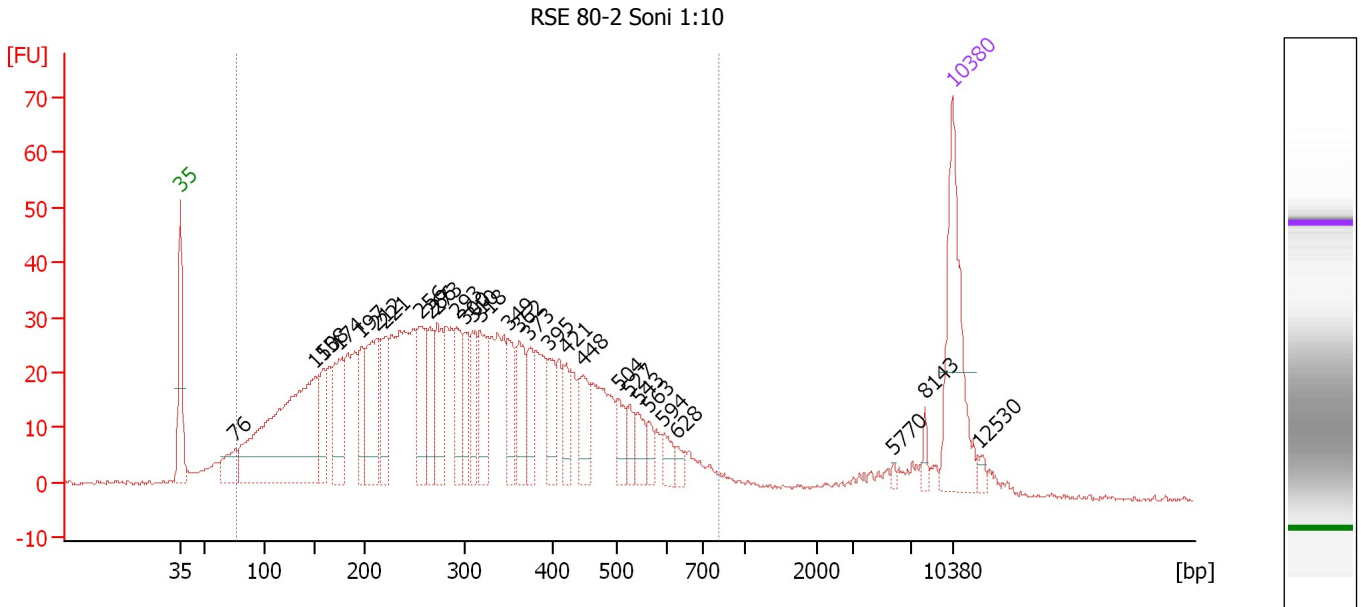
**Region table for sample 6 : RSE 80-1 Soni 1:10**

From [bp]	Molarity [pmol/l]	Average Size [bp]	Conc. [pg/µl]	To [bp]	Corr. Area	% of Total	Size distribution in CV [%]	Color
66	17,108.1	331	2,542.48	895	1,578.6	91	45.9	

Assay Class: High Sensitivity DNA Assay  
 Data Path: C:\...ents and Settings\Bioanalyzer\2012-05-14\2012-05-14\_003.xad

Created: 5/14/2012 3:16:33 PM  
 Modified: 5/14/2012 3:59:15 PM

**Electropherogram Summary Continued ...**



**Overall Results for sample 7 : RSE 80-2 Soni 1:10**

Number of peaks found: 29      Corr. Area 1: 1,337.9  
 Noise: 0.3

**Peak table for sample 7 : RSE 80-2 Soni 1:10**

Peak	Size [bp]	Conc. [pg/μl]	Molarity [pmol/l]	Observations
1	35	125.00	5,411.3	Lower Marker
2	76	30.82	616.6	
3	150	279.67	2,819.0	
4	158	37.19	356.0	
5	174	70.81	615.6	
6	197	39.23	302.2	
7	212	81.75	583.6	
8	221	49.07	336.7	
9	256	53.97	319.7	
10	266	37.69	214.7	
11	273	54.22	301.0	
12	293	35.13	181.4	
13	300	33.82	170.5	
14	310	33.04	161.5	
15	318	44.43	211.4	
16	349	32.62	141.4	
17	362	39.06	163.5	
18	373	27.36	111.2	
19	395	27.37	104.9	
20	421	20.56	74.1	
21	448	32.13	108.7	
22	504	20.54	61.8	
23	527	12.03	34.6	
24	543	17.67	49.3	
25	563	9.69	26.1	
26	594	12.23	31.2	

Assay Class: High Sensitivity DNA Assay  
 Data Path: C:\...ents and Settings\Bioanalyzer\2012-05-14\2012-05-14\_003.xad


Created: 5/14/2012 3:16:33 PM  
 Modified: 5/14/2012 3:59:15 PM

### Electropherogram Summary Continued ...

#### ... Peak table for sample 7 : RSE 80-2 Soni 1:10

Peak	Size [bp]	Conc. [pg/μl]	Molarity [pmol/l]	Observations
27	628	7.17	17.3	
28	5,770	2.09	0.5	
29	8,143	4.73	0.9	
30	10,380	75.00	10.9	Upper Marker
31	12,530	0.00	0.0	

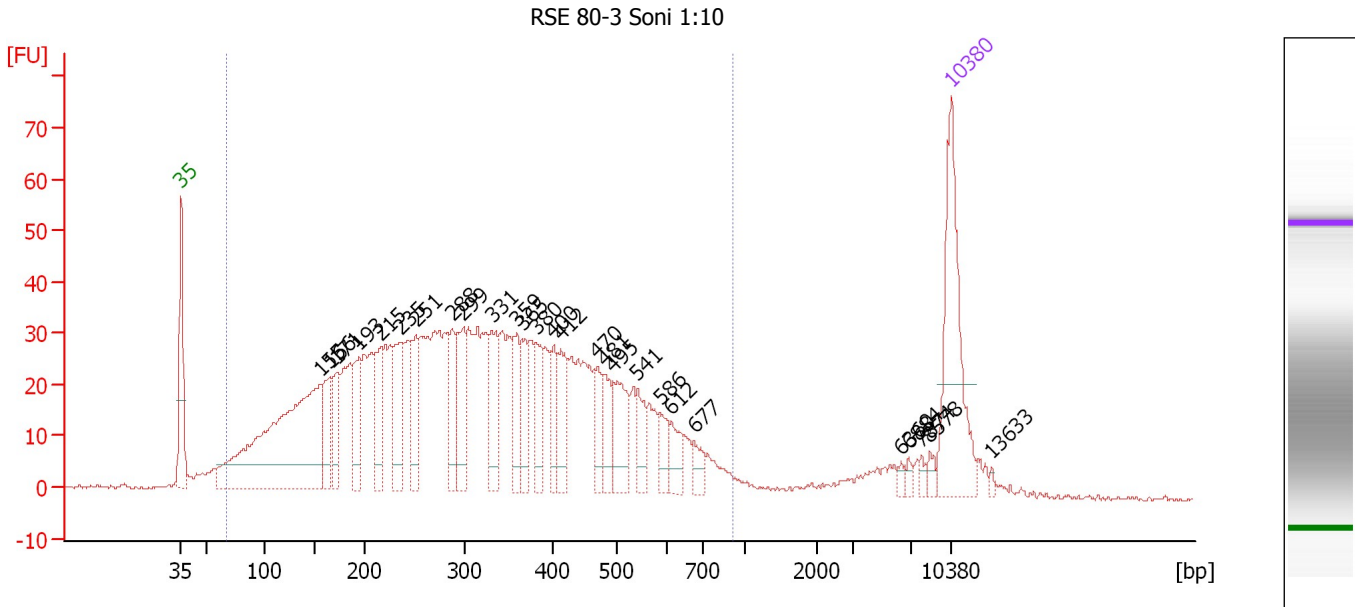
#### Region table for sample 7 : RSE 80-2 Soni 1:10

From [bp]	Molarity [pmol/l]	Average Size [bp]	Conc. [pg/μl]	To [bp]	Corr. Area	% of Total	Size distribution in CV [%]	Color
76	12,410.0	313	1,820.90	817	1,337.9	92	44.1	

Assay Class: High Sensitivity DNA Assay  
 Data Path: C:\...ents and Settings\Bioanalyzer\2012-05-14\2012-05-14\_003.xad

Created: 5/14/2012 3:16:33 PM  
 Modified: 5/14/2012 3:59:15 PM

**Electropherogram Summary Continued ...**



**Overall Results for sample 8 : RSE 80-3 Soni 1:10**

Number of peaks found: 27      Corr. Area 1: 1,490.1  
 Noise: 0.3

**Peak table for sample 8 : RSE 80-3 Soni 1:10**

Peak	Size [bp]	Conc. [pg/μl]	Molarity [pmol/l]	Observations
1	35	125.00	5,411.3	Lower Marker
2	155	281.37	2,752.8	
3	166	39.51	361.7	
4	171	33.11	292.7	
5	193	37.12	291.0	
6	215	42.92	302.0	
7	235	53.51	344.6	
8	251	34.71	209.6	
9	288	33.04	173.8	
10	299	47.28	239.7	
11	331	41.02	187.7	
12	359	27.08	114.4	
13	365	28.12	116.9	
14	380	26.50	105.6	
15	400	22.73	86.1	
16	412	32.03	117.9	
17	470	21.43	69.0	
18	481	23.77	74.9	
19	495	38.97	119.3	
20	541	20.33	56.9	
21	586	15.21	39.3	
22	612	15.30	37.9	
23	677	11.77	26.4	
24	6,360	2.59	0.6	
25	6,884	3.03	0.7	
26	7,874	3.23	0.6	

Assay Class: High Sensitivity DNA Assay  
Data Path: C:\...ents and Settings\Bioanalyzer\2012-05-14\2012-05-14\_003.xad

Created: 5/14/2012 3:16:33 PM  
Modified: 5/14/2012 3:59:15 PM

**Electropherogram Summary Continued ...****... Peak table for sample 8 : RSE 80-3 Soni 1:10**

Peak	Size [bp]	Conc. [pg/μl]	Molarity [pmol/l]	Observations
27	8,578	4.22	0.7	
28	10,380	75.00	10.9	Upper Marker
29	13,633	0.00	0.0	

**Region table for sample 8 : RSE 80-3 Soni 1:10**

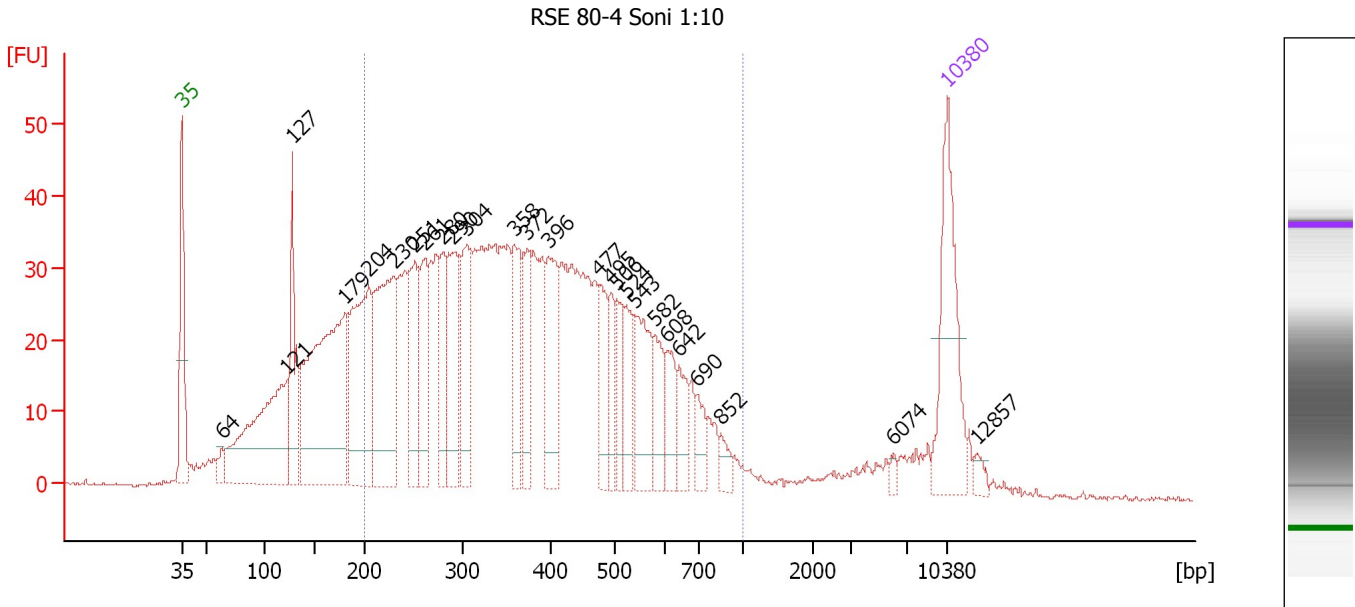
From [bp]	Molarity [pmol/l]	Average Size [bp]	Conc. [pg/μl]	To [bp]	Corr. Area	% of Total	Size distribution in CV [%]	Color
67	11,400.1	330	1,695.74	917	1,490.1	93	45.8	■



Assay Class: High Sensitivity DNA Assay  
 Data Path: C:\...ents and Settings\Bioanalyzer\2012-05-14\2012-05-14\_003.xad

Created: 5/14/2012 3:16:33 PM  
 Modified: 5/14/2012 3:59:15 PM

**Electropherogram Summary Continued ...**



**Overall Results for sample 9 : RSE 80-4 Soni 1:10**

Number of peaks found: 26                      Corr. Area 1: 1,250.1  
 Noise: 0.3

**Peak table for sample 9 : RSE 80-4 Soni 1:10**

Peak	Size [bp]	Conc. [pg/μl]	Molarity [pmol/l]	Observations
1	35	125.00	5,411.3	Lower Marker
2	64	12.54	297.8	
3	121	201.76	2,518.6	
4	127	82.45	982.3	
5	179	271.46	2,293.1	
6	204	159.76	1,185.9	
7	230	164.58	1,086.1	
8	251	71.55	432.3	
9	261	63.78	371.0	
10	280	55.52	300.4	
11	290	83.62	437.2	
12	304	68.17	339.4	
13	358	57.01	241.3	
14	372	45.44	184.9	
15	396	69.19	264.4	
16	477	40.60	128.9	
17	495	28.01	85.7	
18	506	28.86	86.5	
19	524	34.80	100.7	
20	543	57.13	159.6	
21	582	30.56	79.6	
22	608	27.14	67.6	
23	642	25.65	60.6	
24	690	17.62	38.7	
25	852	10.40	18.5	
26	6,074	3.40	0.8	


Assay Class: High Sensitivity DNA Assay  
Data Path: C:\...ents and Settings\Bioanalyzer\2012-05-14\2012-05-14\_003.xad

Created: 5/14/2012 3:16:33 PM  
Modified: 5/14/2012 3:59:15 PM

**Electropherogram Summary Continued ...****... Peak table for sample 9 : RSE 80-4 Soni 1:10**

Peak	Size [bp]	Conc. [pg/ $\mu$ l]	Molarity [pmol/l]	Observations
27	10,380	75.00	10.9	Upper Marker
28	12,857	0.00	0.0	

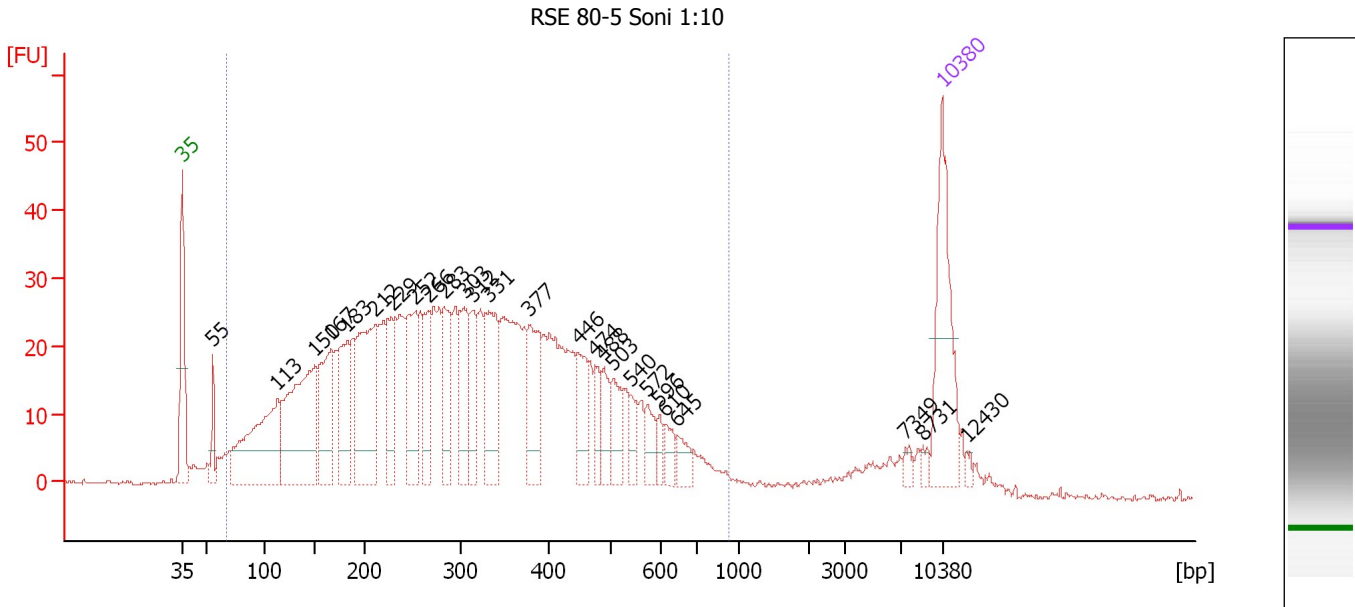
**Region table for sample 9 : RSE 80-4 Soni 1:10**

From [bp]	Molarity [pmol/l]	Average Size [bp]	Conc. [pg/ $\mu$ l]	To [bp]	Corr. Area	% of Total	Size distribution in CV [%]	Color
200	8,204.4	395	1,802.73	1,000	1,250.1	72	36.6	

Assay Class: High Sensitivity DNA Assay  
 Data Path: C:\...ents and Settings\Bioanalyzer\2012-05-14\2012-05-14\_003.xad

Created: 5/14/2012 3:16:33 PM  
 Modified: 5/14/2012 3:59:15 PM

**Electropherogram Summary Continued ...**



**Overall Results for sample 10 : RSE 80-5 Soni 1:10**

Number of peaks found: 26                      Corr. Area 1: 1,209.1  
 Noise: 0.3

**Peak table for sample 10 : RSE 80-5 Soni 1:10**

Peak	Size [bp]	Conc. [pg/μl]	Molarity [pmol/l]	Observations
1	35	125.00	5,411.3	Lower Marker
2	55	25.31	692.8	
3	113	158.60	2,134.0	
4	150	181.99	1,834.3	
5	167	86.73	786.4	
6	183	70.72	584.4	
7	212	135.97	973.6	
8	229	49.05	325.2	
9	252	75.01	451.0	
10	266	46.59	265.1	
11	283	58.26	312.3	
12	303	55.38	276.8	
13	312	38.76	188.1	
14	331	70.20	321.2	
15	377	62.13	250.0	
16	446	36.74	124.8	
17	474	20.20	64.6	
18	488	24.82	77.1	
19	503	27.43	82.7	
20	540	14.98	42.0	
21	572	18.94	50.2	
22	596	9.72	24.7	
23	610	13.32	33.1	
24	645	14.11	33.1	
25	7,349	4.96	1.0	
26	8,731	4.78	0.8	

Assay Class: High Sensitivity DNA Assay  
Data Path: C:\...ents and Settings\Bioanalyzer\2012-05-14\2012-05-14\_003.xad

Created: 5/14/2012 3:16:33 PM  
Modified: 5/14/2012 3:59:15 PM

**Electropherogram Summary Continued ...****... Peak table for sample 10 : RSE 80-5 Soni 1:10**

Peak	Size [bp]	Conc. [pg/μl]	Molarity [pmol/l]	Observations
27	10,380	75.00	10.9	Upper Marker
28	12,430	0.00	0.0	

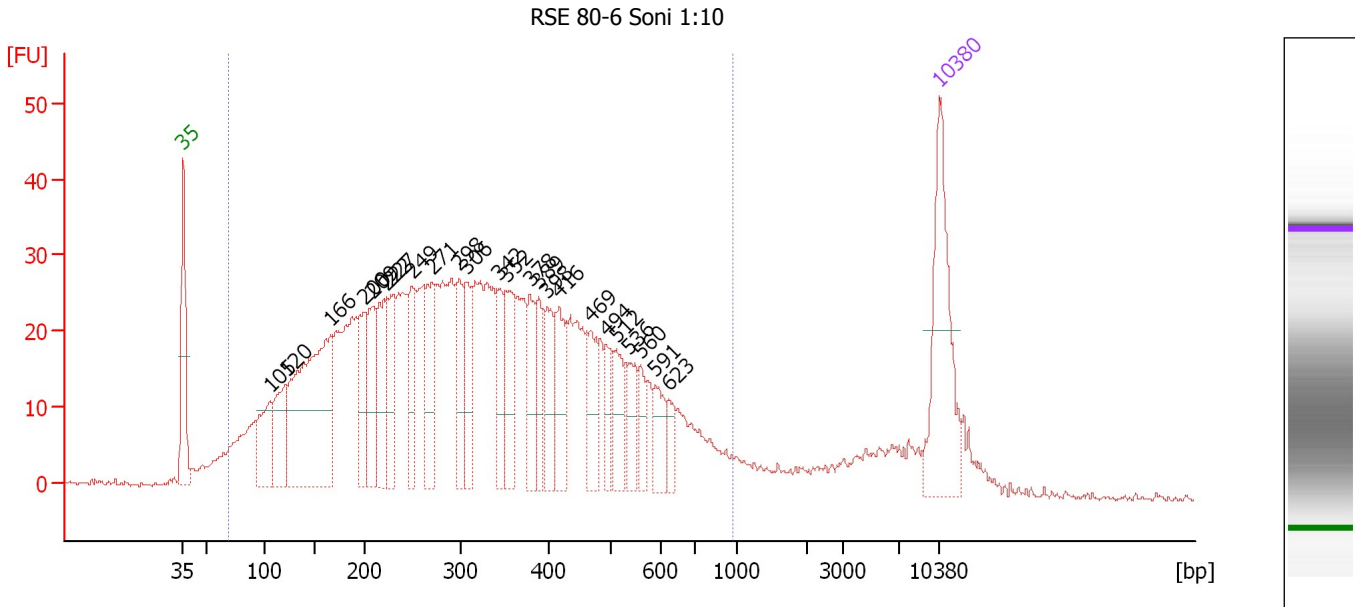
**Region table for sample 10 : RSE 80-5 Soni 1:10**

From [bp]	Molarity [pmol/l]	Average Size [bp]	Conc. [pg/μl]	To [bp]	Corr. Area	% of Total	Size distribution in CV [%]	Color
67	14,329.2	320	2,088.64	935	1,209.1	93	45.8	■

Assay Class: High Sensitivity DNA Assay  
 Data Path: C:\...ents and Settings\Bioanalyzer\2012-05-14\2012-05-14\_003.xad

Created: 5/14/2012 3:16:33 PM  
 Modified: 5/14/2012 3:59:15 PM

**Electropherogram Summary Continued ...**



**Setpoint Deviations for sample 11 : RSE 80-6 Soni 1:10**

Height Threshold [FU] : 10

**Overall Results for sample 11 : RSE 80-6 Soni 1:10**

Number of peaks found: 24                      Corr. Area 1: 1,281.0  
 Noise: 0.3

**Peak table for sample 11 : RSE 80-6 Soni 1:10**

Peak	Size [bp]	Conc. [pg/μl]	Molarity [pmol/l]	Observations
1	35	125.00	5,411.3	Lower Marker
2	105	56.50	815.2	
3	120	55.98	704.1	
4	166	225.85	2,060.0	
5	200	44.58	338.1	
6	209	54.64	395.9	
7	222	57.56	392.3	
8	227	45.96	307.2	
9	249	41.77	253.9	
10	271	56.38	315.7	
11	298	41.62	211.6	
12	306	43.36	214.9	
13	342	33.51	148.3	
14	352	49.87	214.6	
15	378	36.19	145.0	
16	389	28.29	110.3	
17	398	34.83	132.6	
18	416	45.06	164.1	
19	469	35.14	113.6	
20	494	19.82	60.8	
21	512	30.70	90.9	
22	536	25.16	71.1	

Assay Class: High Sensitivity DNA Assay  
 Data Path: C:\...ents and Settings\Bioanalyzer\2012-05-14\2012-05-14\_003.xad


Created: 5/14/2012 3:16:33 PM  
 Modified: 5/14/2012 3:59:15 PM

### Electropherogram Summary Continued ...

#### ... Peak table for sample 11 : RSE 80-6 Soni 1:10

Peak	Size [bp]	Conc. [pg/μl]	Molarity [pmol/l]	Observations
23	560	17.14	46.4	
24	591	22.88	58.7	
25	623	12.96	31.5	
26	10,380	75.00	10.9	Upper Marker

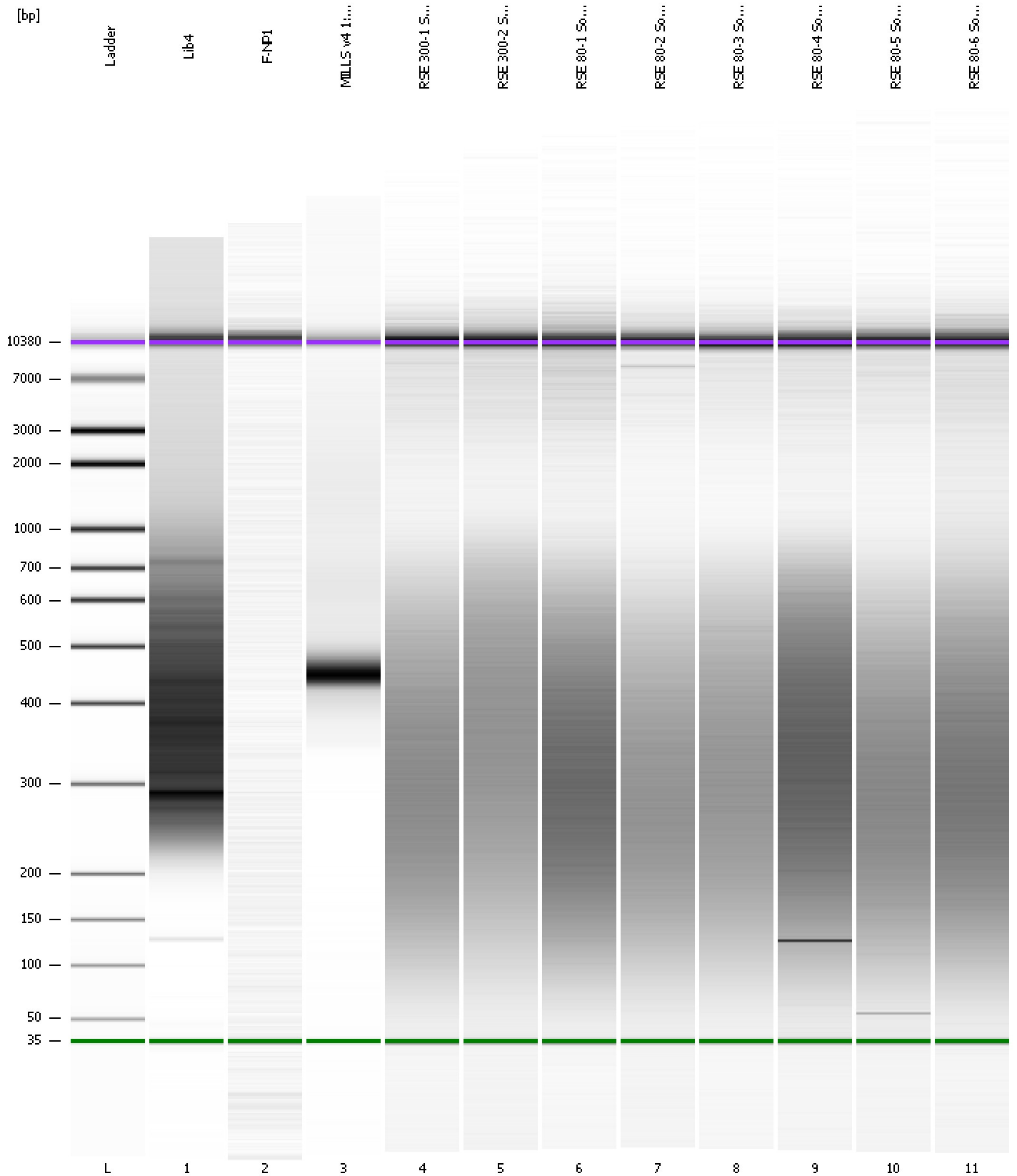
#### Region table for sample 11 : RSE 80-6 Soni 1:10

From [bp]	Molarity [pmol/l]	Average Size [bp]	Conc. [pg/μl]	To [bp]	Corr. Area	% of Total	Size distribution in CV [%]	Color
69	13,271.4	334	1,978.93	972	1,281.0	92	47.6	

Assay Class: High Sensitivity DNA Assay  
Data Path: C:\...ents and Settings\Bioanalyzer\2012-05-14\2012-05-14\_003.xad

Created: 5/14/2012 3:16:33 PM  
Modified: 5/14/2012 3:59:15 PM

**Gel Image**



Assay Class: High Sensitivity DNA Assay  
 Data Path: C:\...ents and Settings\Bioanalyzer\2012-05-14\2012-05-14\_003.xad

Created: 5/14/2012 3:16:33 PM  
 Modified: 5/14/2012 3:59:15 PM

**Run Logbook**

Description	Number	Source	Category	Sub Category	Time	Time Zone	User	Host
Run ended on port 1 (Number of wells acquired: 12)		Instrument	Run		5/14/2012 3:57:52 PM	(GMT --07:00) Pacific Standard Time	UC Davis	D8XSMGH1
Run started on port 1 (File: C:\Documents and Settings\Bioanalyzer\2012-05-14\2012-05-14_003.xad)		Instrument	Run		5/14/2012 3:16:39 PM	(GMT --07:00) Pacific Standard Time	UC Davis	D8XSMGH1
Product Number : G2938B		Instrument	Run		5/14/2012 3:16:39 PM	(GMT --07:00) Pacific Standard Time	UC Davis	D8XSMGH1
Name :		Instrument	Run		5/14/2012 3:16:39 PM	(GMT --07:00) Pacific Standard Time	UC Davis	D8XSMGH1
Vendor : Agilent Technologies		Instrument	Run		5/14/2012 3:16:39 PM	(GMT --07:00) Pacific Standard Time	UC Davis	D8XSMGH1
Serial# : DE13701086		Instrument	Run		5/14/2012 3:16:39 PM	(GMT --07:00) Pacific Standard Time	UC Davis	D8XSMGH1
Firmware : C.01.069		Instrument	Run		5/14/2012 3:16:39 PM	(GMT --07:00) Pacific Standard Time	UC Davis	D8XSMGH1
Cartridge : Electrode		Instrument	Run		5/14/2012 3:16:39 PM	(GMT --07:00) Pacific Standard Time	UC Davis	D8XSMGH1