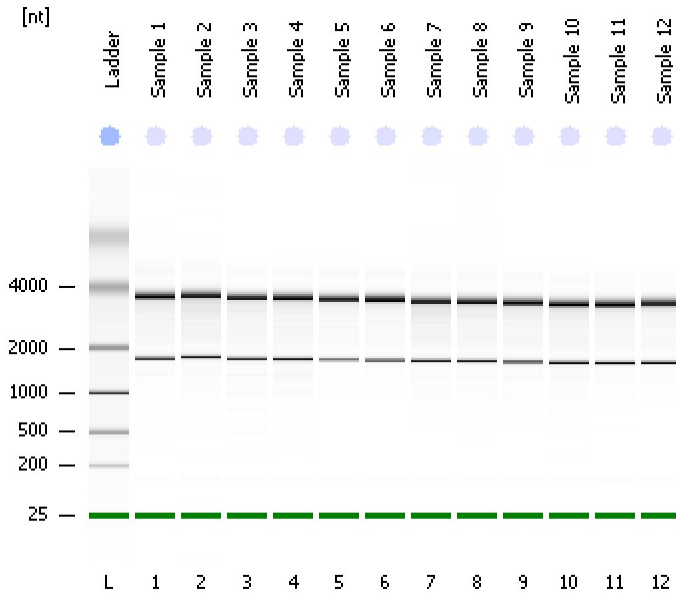


Assay Class: Eukaryote Total RNA Nano  
Data Path: C:\...ents and Settings\Bioanalyzer\2012-05-14\2012-05-14\_001.xad

Created: 5/14/2012 10:34:52 AM  
Modified: 5/14/2012 10:58:40 AM

Electrophoresis File Run Summary



Instrument Information:

Instrument Name: DE13701086      Firmware: C.01.069  
Serial#: DE13701086      Type: G2938B

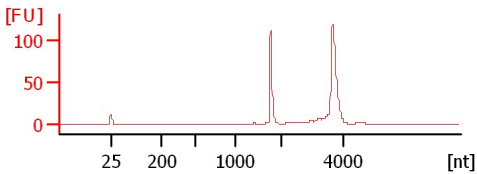
Assay Information:

Assay Origin Path: C:\Program Files\Agilent\2100 bioanalyzer\2100 expert\assays\RNA\Eukaryote Total RNA Nano Series II.xsy  
Assay Class: Eukaryote Total RNA Nano  
Version: 2.6  
Assay Comments: Total RNA Analysis ng sensitivity (Eukaryote)  
© Copyright 2003 - 2009 Agilent Technologies, Inc.

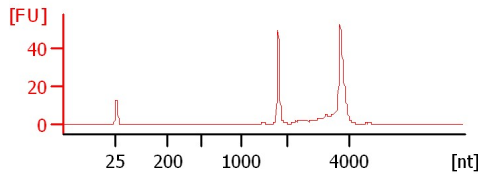
Chip Information:

Chip Lot #:   
Reagent Kit Lot #:   
Chip Comments:

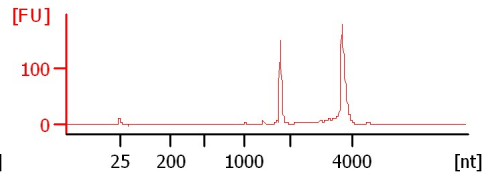
Sample 1  
RIN: 9.90



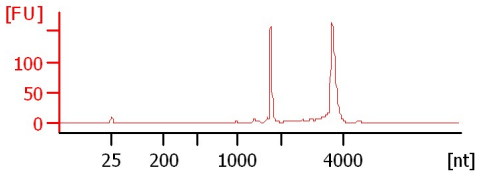
Sample 2  
RIN: 9.90



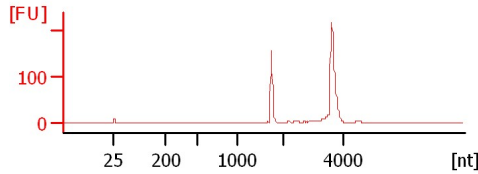
Sample 3  
RIN: 9.70



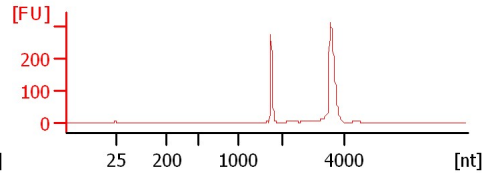
Sample 4  
RIN: 9.70



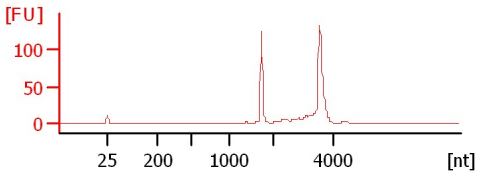
Sample 5  
RIN: 10



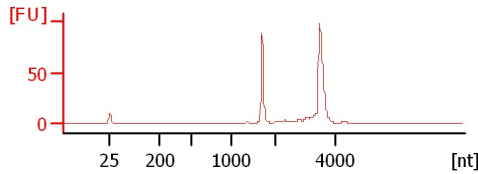
Sample 6  
RIN: 10



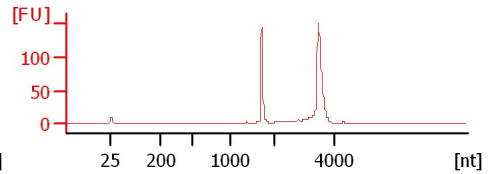
Sample 7  
RIN: 9.70



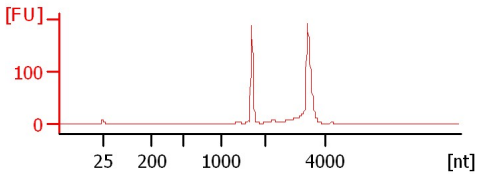
Sample 8  
RIN: 9.90



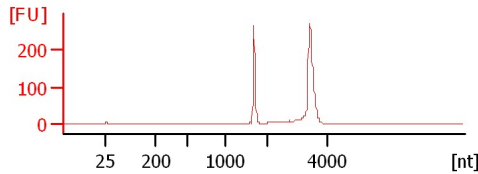
Sample 9  
RIN: 9.80



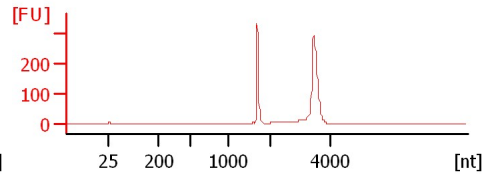
Sample 10  
RIN: 9.60



Sample 11  
RIN: 9.80



Sample 12  
RIN: 9.90



Assay Class: Eukaryote Total RNA Nano  
Data Path: C:\...ents and Settings\Bioanalyzer\2012-05-14\2012-05-14\_001.xad

Created: 5/14/2012 10:34:52 AM  
Modified: 5/14/2012 10:58:40 AM

**Electrophoresis File Run Summary (Chip Summary)**

Sample Name	Sample Comment	Status	Result Label	Result Color
Sample 1		✓	RIN: 9.90	
Sample 2		✓	RIN: 9.90	
Sample 3		✓	RIN: 9.70	
Sample 4		✓	RIN: 9.70	
Sample 5		✓	RIN:10	
Sample 6		✓	RIN:10	
Sample 7		✓	RIN: 9.70	
Sample 8		✓	RIN: 9.90	
Sample 9		✓	RIN: 9.80	
Sample 10		✓	RIN: 9.60	
Sample 11		✓	RIN: 9.80	
Sample 12		✓	RIN: 9.90	
Ladder		✓	All Other Samples	

**Chip Lot #**

**Reagent Kit Lot #**

**Chip Comments :**

Assay Class: Eukaryote Total RNA Nano  
Data Path: C:\...ents and Settings\Bioanalyzer\2012-05-14\2012-05-14\_001.xad

Created: 5/14/2012 10:34:52 AM  
Modified: 5/14/2012 10:58:40 AM

## Electrophoresis Assay Details

### General Analysis Settings

Number of Available Sample and Ladder Wells (Max.) : 13  
Minimum Visible Range [s] : 17  
Maximum Visible Range [s] : 70  
Start Analysis Time Range [s] : 19  
End Analysis Time Range [s] : 69  
Ladder Concentration [ng/ $\mu$ l] : 150  
Lower Marker Concentration [ng/ $\mu$ l] : 0  
Upper Marker Concentration [ng/ $\mu$ l] : 0  
Used Lower Marker for Quantitation  
Standard Curve Fit is Logarithmic  
Show Data Aligned to Lower Marker

### Integrator Settings

Integration Start Time [s] : 19  
Integration End Time [s] : 69  
Slope Threshold : 0.6  
Height Threshold [FU] : 0.5  
Area Threshold : 0.2  
Width Threshold [s] : 0.5  
Baseline Plateau [s] : 6

### Filter Settings

Filter Width [s] : 0.5  
Polynomial Order : 4

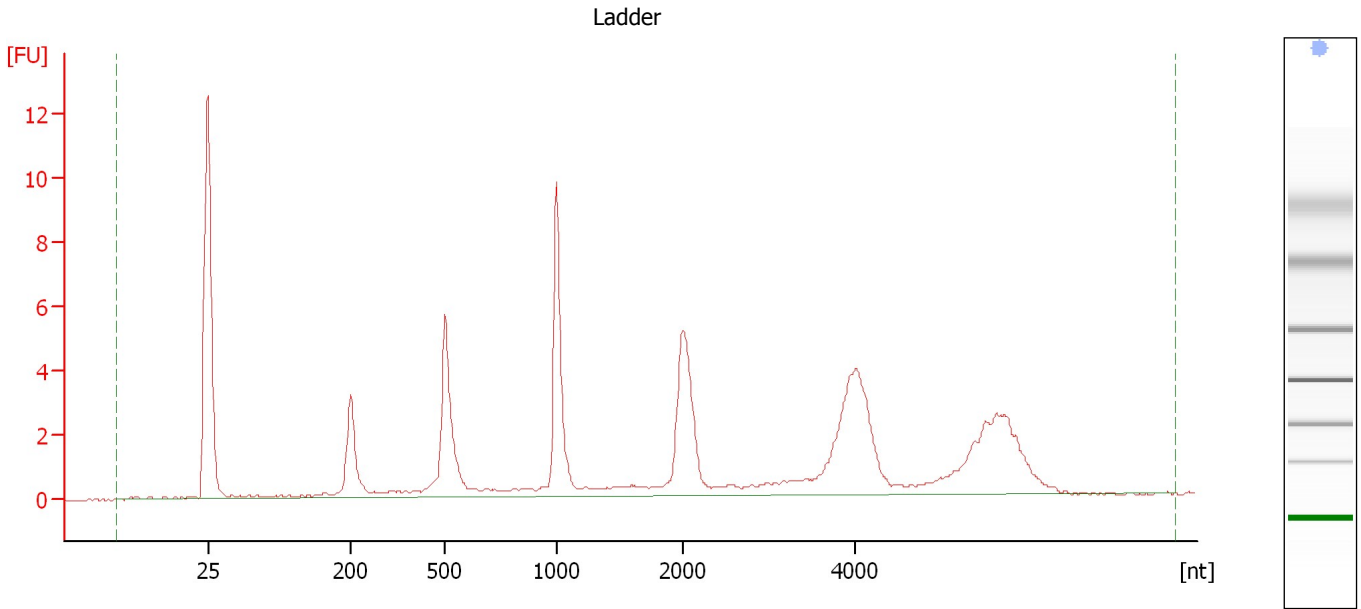
### Ladder

Ladder Peak	Size
1	25
2	200
3	500
4	1000
5	2000
6	4000

Assay Class: Eukaryote Total RNA Nano  
Data Path: C:\...ents and Settings\Bioanalyzer\2012-05-14\2012-05-14\_001.xad

Created: 5/14/2012 10:34:52 AM  
Modified: 5/14/2012 10:58:40 AM

**Electropherogram Summary**



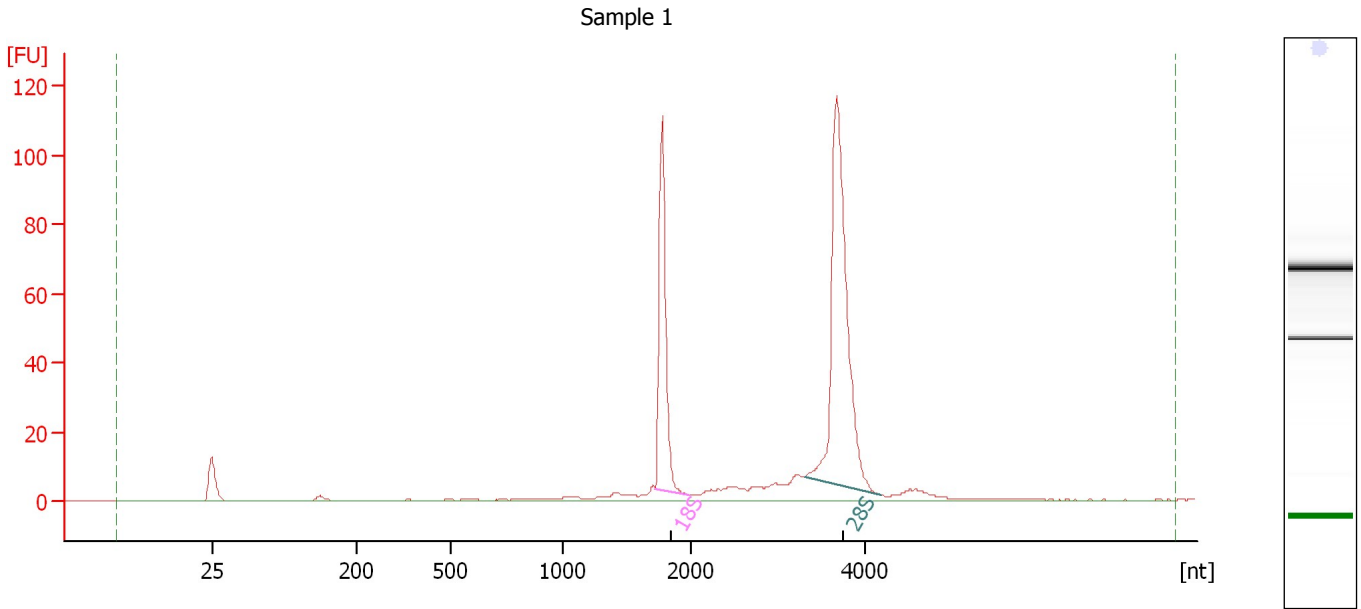
**Overall Results for Ladder**

RNA Area:	69.3	Result Flagging Color:	<span style="background-color: #ADD8E6; border: 1px solid black; display: inline-block; width: 20px; height: 10px;"></span>
RNA Concentration:	150 ng/μl	Result Flagging Label:	All Other Samples

Assay Class: Eukaryote Total RNA Nano  
Data Path: C:\...ents and Settings\Bioanalyzer\2012-05-14\2012-05-14\_001.xad

Created: 5/14/2012 10:34:52 AM  
Modified: 5/14/2012 10:58:40 AM

**Electropherogram Summary Continued ...**



**Overall Results for sample 1 : Sample 1**

RNA Area:	367.2	RNA Integrity Number (RIN):	9.9 (B.02.08)
RNA Concentration:	794 ng/μl	Result Flagging Color:	<span style="background-color: #ccccff; border: 1px solid black; display: inline-block; width: 20px; height: 10px;"></span>
rRNA Ratio [28s / 18s]:	2.1	Result Flagging Label:	RIN: 9.90

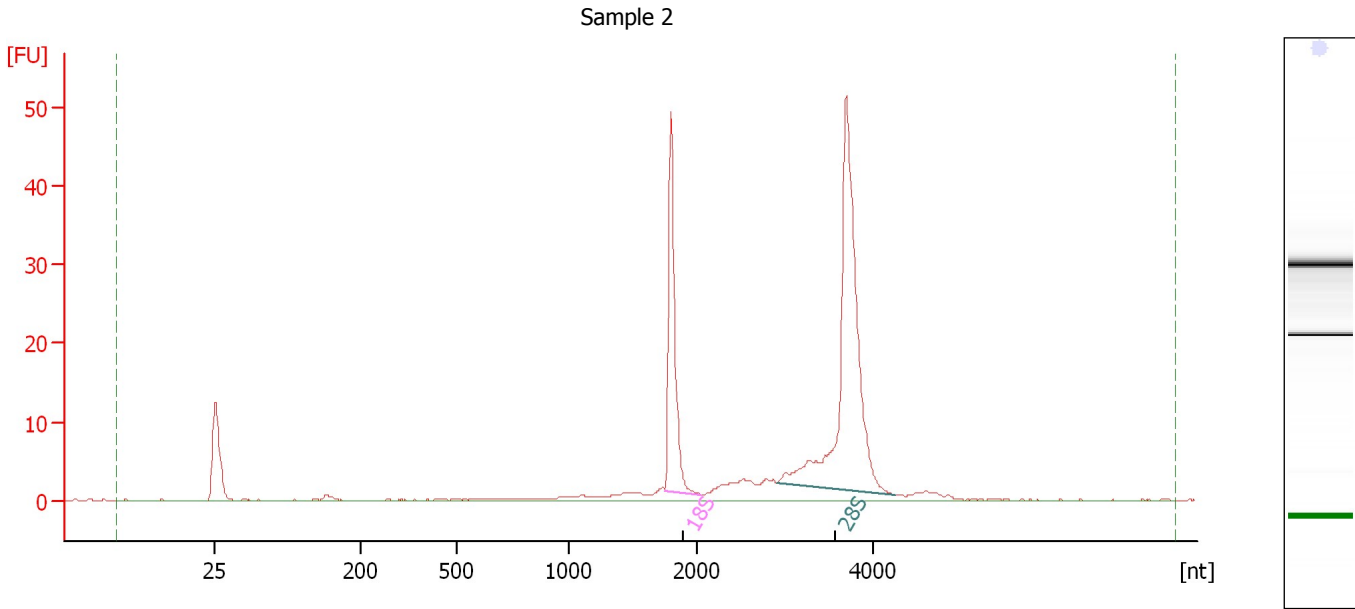
**Fragment table for sample 1 : Sample 1**

Name	Start Size [nt]	End Size [nt]	Area	% of total Area
18S	1,724	1,985	80.9	22.0
28S	3,300	4,182	169.8	46.3

Assay Class: Eukaryote Total RNA Nano  
Data Path: C:\...ents and Settings\Bioanalyzer\2012-05-14\2012-05-14\_001.xad

Created: 5/14/2012 10:34:52 AM  
Modified: 5/14/2012 10:58:40 AM

**Electropherogram Summary Continued ...**



**Overall Results for sample 2 : Sample 2**

RNA Area: 171.5                      RNA Integrity Number (RIN): 9.9 (B.02.08)  
RNA Concentration: 371 ng/μl                      Result Flagging Color:   
rRNA Ratio [28s / 18s]: 2.3                      Result Flagging Label: RIN: 9.90

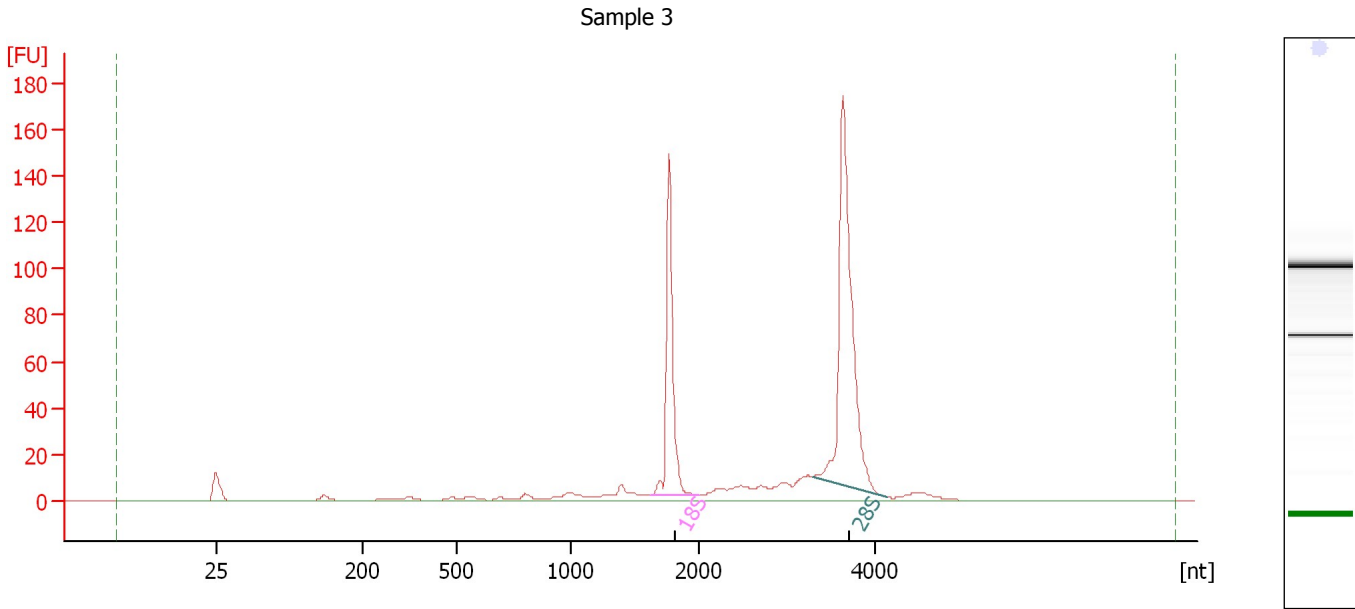
**Fragment table for sample 2 : Sample 2**

Name	Start Size [nt]	End Size [nt]	Area	% of total Area
18S	1,753	2,054	36.3	21.2
28S	2,905	4,256	84.4	49.2

Assay Class: Eukaryote Total RNA Nano  
Data Path: C:\...ents and Settings\Bioanalyzer\2012-05-14\2012-05-14\_001.xad

Created: 5/14/2012 10:34:52 AM  
Modified: 5/14/2012 10:58:40 AM

**Electropherogram Summary Continued ...**



**Overall Results for sample 3 : Sample 3**

RNA Area:	515.8	RNA Integrity Number (RIN):	9.7 (B.02.08)
RNA Concentration:	1,116 ng/μl	Result Flagging Color:	<span style="background-color: #ccccff; border: 1px solid black; display: inline-block; width: 20px; height: 10px;"></span>
rRNA Ratio [28s / 18s]:	1.9	Result Flagging Label:	RIN: 9.70

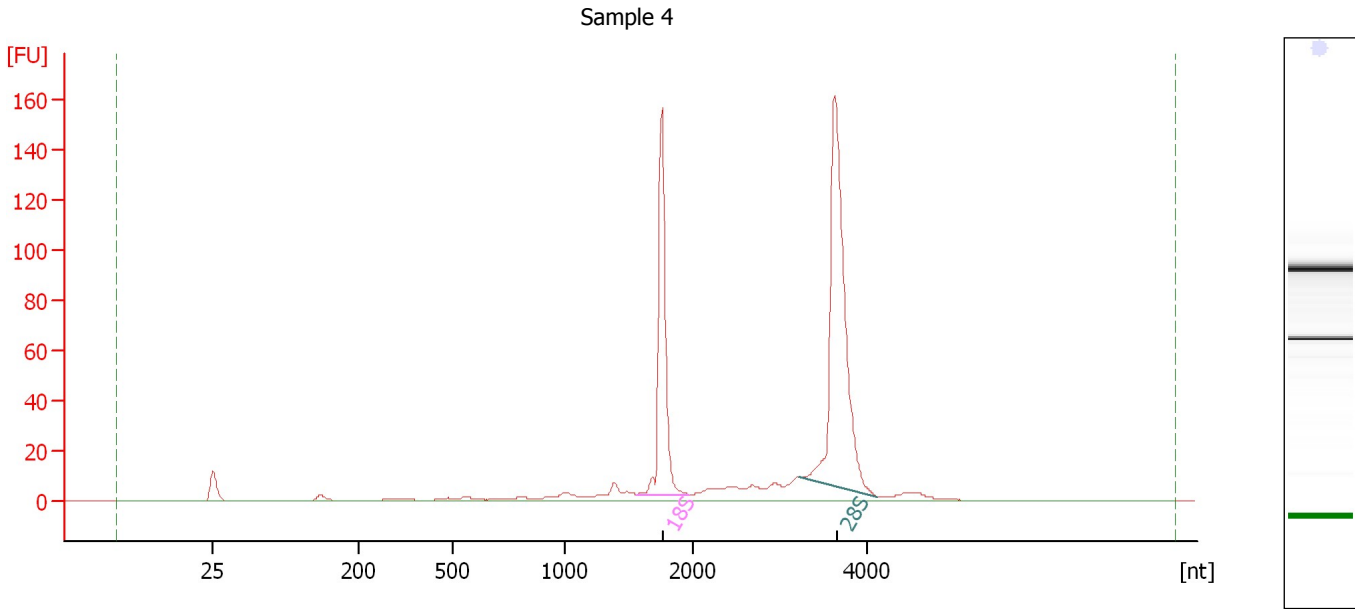
**Fragment table for sample 3 : Sample 3**

Name	Start Size [nt]	End Size [nt]	Area	% of total Area
18S	1,629	2,006	113.2	22.0
28S	3,293	4,131	215.2	41.7

Assay Class: Eukaryote Total RNA Nano  
 Data Path: C:\...ents and Settings\Bioanalyzer\2012-05-14\2012-05-14\_001.xad

Created: 5/14/2012 10:34:52 AM  
 Modified: 5/14/2012 10:58:40 AM

**Electropherogram Summary Continued ...**



**Overall Results for sample 4 : Sample 4**

RNA Area:	518.0	RNA Integrity Number (RIN):	9.7 (B.02.08)
RNA Concentration:	1,121 ng/μl	Result Flagging Color:	<span style="background-color: #ccccff; border: 1px solid black; display: inline-block; width: 20px; height: 10px;"></span>
rRNA Ratio [28s / 18s]:	1.8	Result Flagging Label:	RIN: 9.70

**Fragment table for sample 4 : Sample 4**

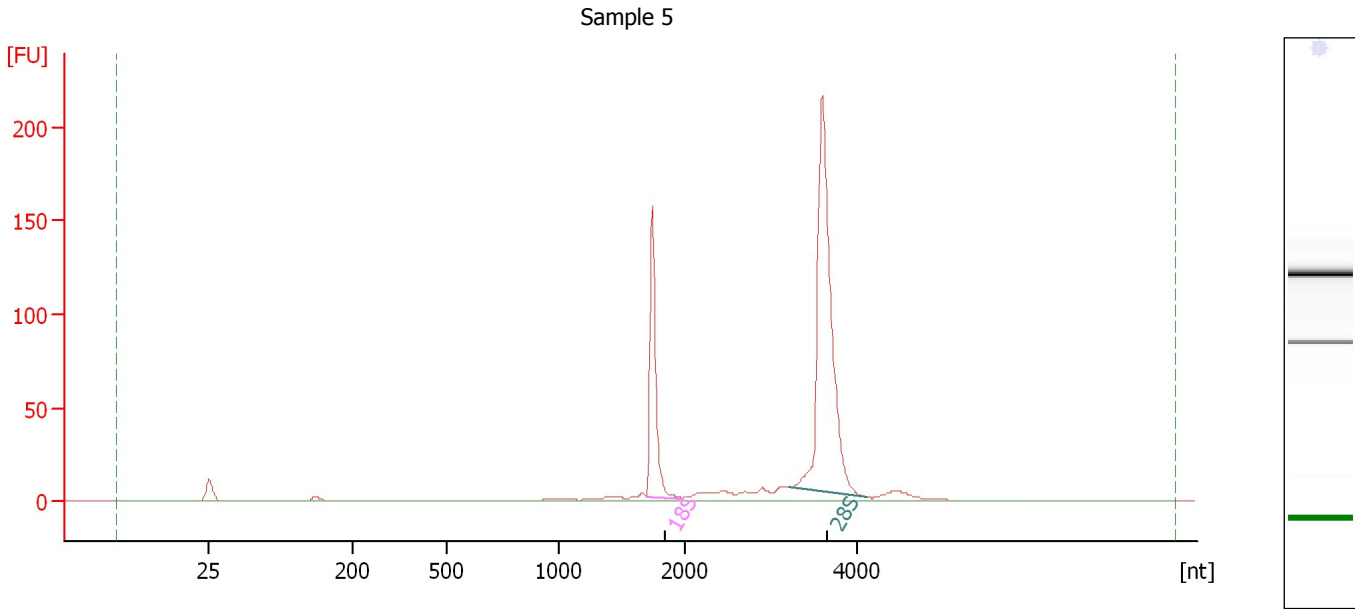
Name	Start Size [nt]	End Size [nt]	Area	% of total Area
18S	1,566	1,977	120.3	23.2
28S	3,225	4,105	221.5	42.8



Assay Class: Eukaryote Total RNA Nano  
Data Path: C:\...ents and Settings\Bioanalyzer\2012-05-14\2012-05-14\_001.xad

Created: 5/14/2012 10:34:52 AM  
Modified: 5/14/2012 10:58:40 AM

**Electropherogram Summary Continued ...**



**Overall Results for sample 5 : Sample 5**

RNA Area:	530.8	RNA Integrity Number (RIN):	10 (B.02.08)
RNA Concentration:	1,148 ng/μl	Result Flagging Color:	<span style="background-color: #ccccff; border: 1px solid black; display: inline-block; width: 20px; height: 10px;"></span>
rRNA Ratio [28s / 18s]:	2.5	Result Flagging Label:	RIN:10

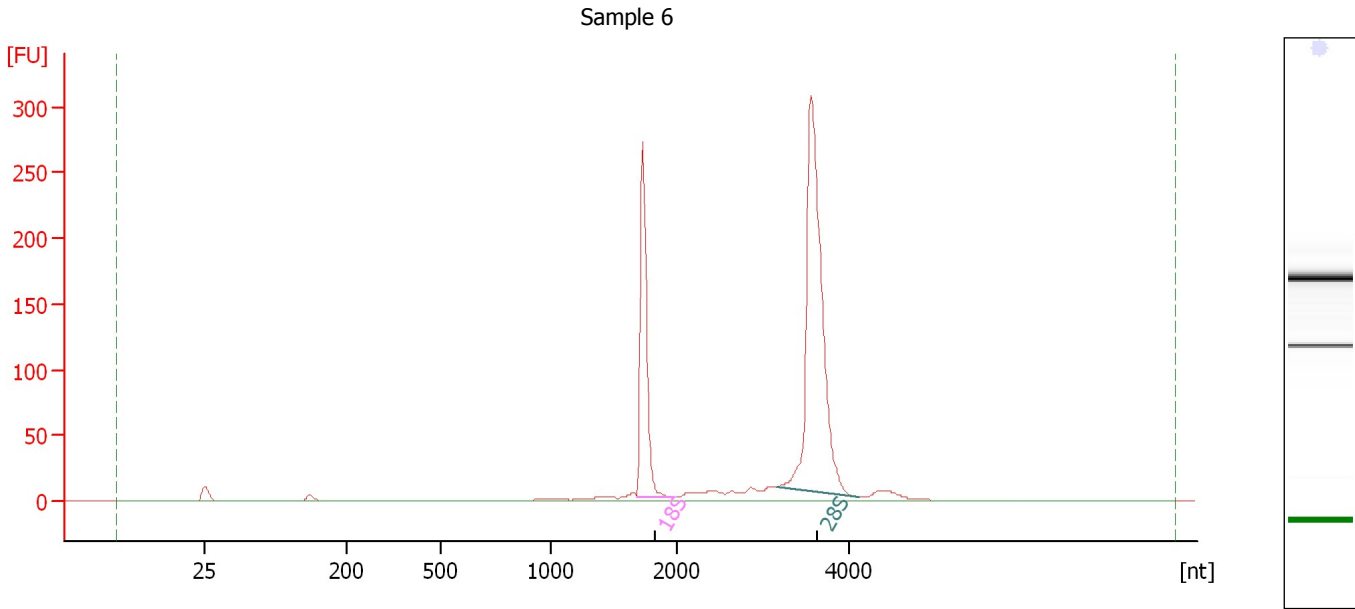
**Fragment table for sample 5 : Sample 5**

Name	Start Size [nt]	End Size [nt]	Area	% of total Area
18S	1,696	1,992	114.1	21.5
28S	3,208	4,095	288.5	54.4

Assay Class: Eukaryote Total RNA Nano  
Data Path: C:\...ents and Settings\Bioanalyzer\2012-05-14\2012-05-14\_001.xad

Created: 5/14/2012 10:34:52 AM  
Modified: 5/14/2012 10:58:40 AM

**Electropherogram Summary Continued ...**



**Overall Results for sample 6 : Sample 6**

RNA Area:	881.4	RNA Integrity Number (RIN):	10 (B.02.08)
RNA Concentration:	1,907 ng/μl	Result Flagging Color:	<span style="background-color: #ccccff; border: 1px solid black; display: inline-block; width: 20px; height: 10px;"></span>
rRNA Ratio [28s / 18s]:	2.4	Result Flagging Label:	RIN:10

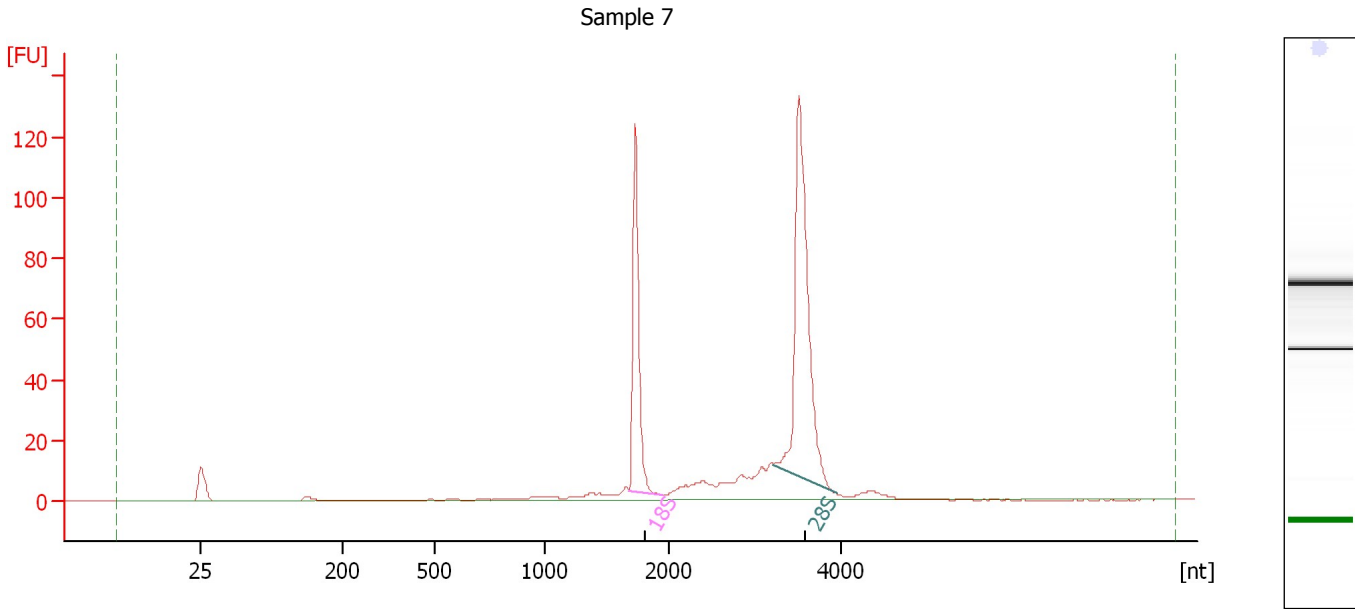
**Fragment table for sample 6 : Sample 6**

Name	Start Size [nt]	End Size [nt]	Area	% of total Area
18S	1,682	1,972	202.5	23.0
28S	3,165	4,122	480.7	54.5

Assay Class: Eukaryote Total RNA Nano  
Data Path: C:\...ents and Settings\Bioanalyzer\2012-05-14\2012-05-14\_001.xad

Created: 5/14/2012 10:34:52 AM  
Modified: 5/14/2012 10:58:40 AM

**Electropherogram Summary Continued ...**



**Overall Results for sample 7 : Sample 7**

RNA Area: 406.8                      RNA Integrity Number (RIN): 9.7 (B.02.08)  
RNA Concentration: 880 ng/μl                      Result Flagging Color:   
rRNA Ratio [28s / 18s]: 1.8                      Result Flagging Label: RIN: 9.70

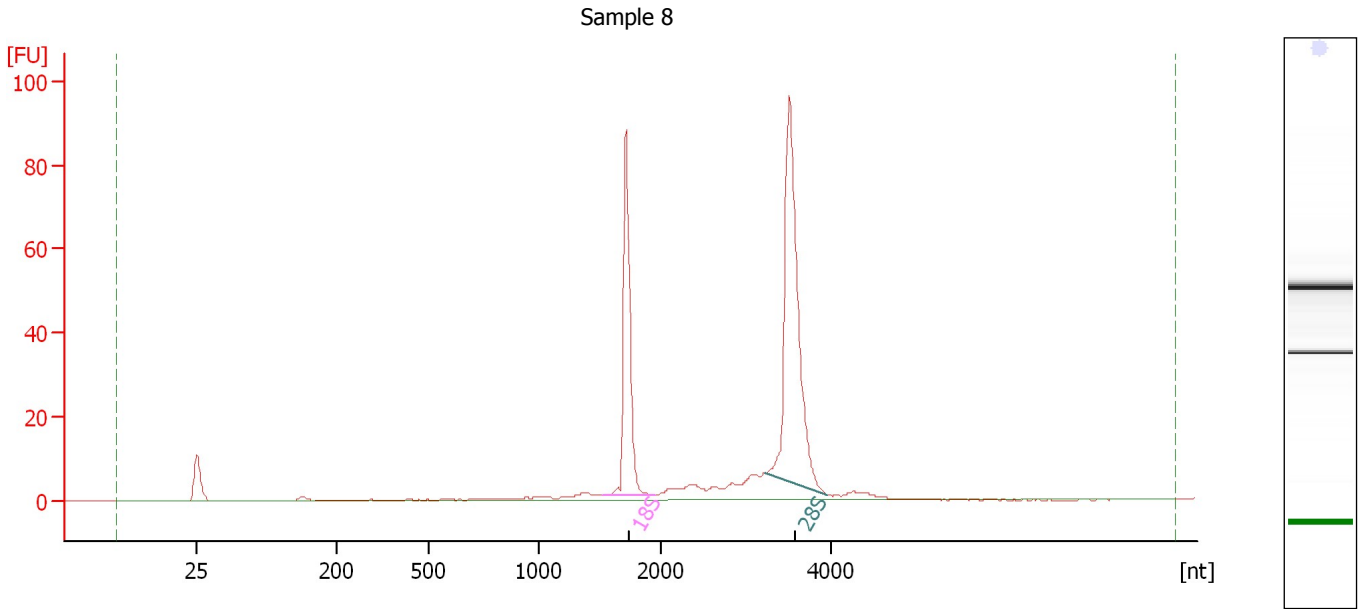
**Fragment table for sample 7 : Sample 7**

Name	Start Size [nt]	End Size [nt]	Area	% of total Area
18S	1,670	1,936	91.3	22.5
28S	3,207	3,945	166.3	40.9

Assay Class: Eukaryote Total RNA Nano  
Data Path: C:\...ents and Settings\Bioanalyzer\2012-05-14\2012-05-14\_001.xad

Created: 5/14/2012 10:34:52 AM  
Modified: 5/14/2012 10:58:40 AM

**Electropherogram Summary Continued ...**



**Overall Results for sample 8 : Sample 8**

RNA Area:	268.8	RNA Integrity Number (RIN):	9.9 (B.02.08)
RNA Concentration:	582 ng/μl	Result Flagging Color:	<span style="background-color: #ccccff; border: 1px solid black; display: inline-block; width: 20px; height: 10px;"></span>
rRNA Ratio [28s / 18s]:	1.8	Result Flagging Label:	RIN: 9.90

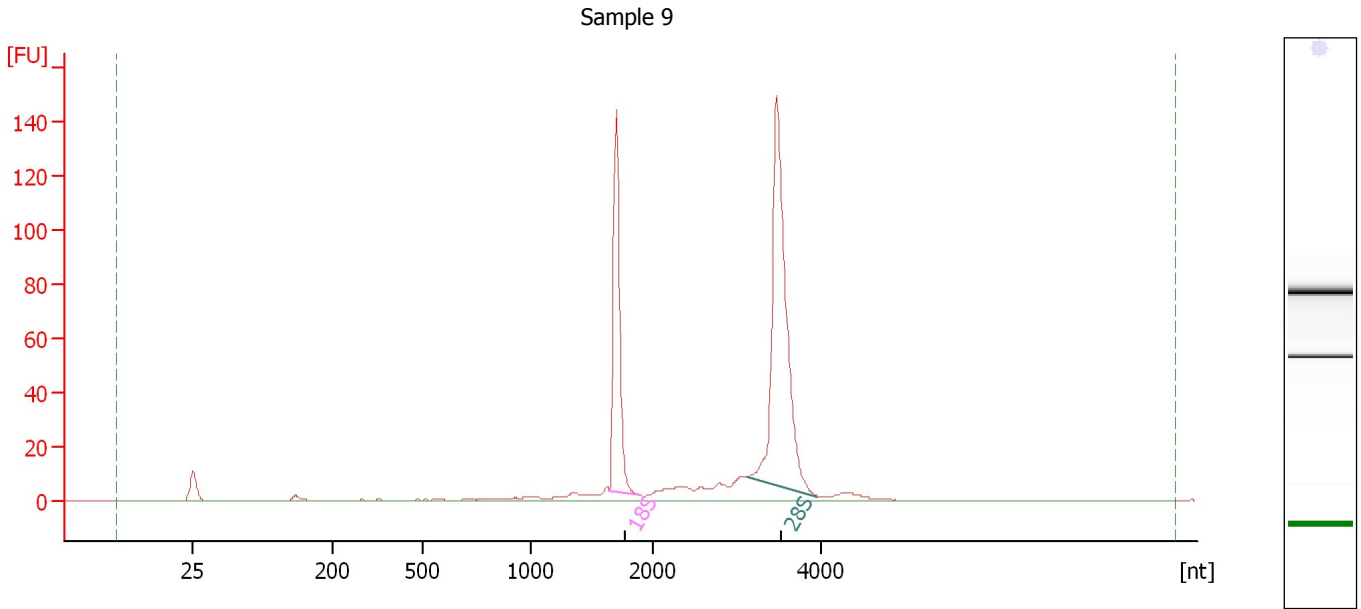
**Fragment table for sample 8 : Sample 8**

Name	Start Size [nt]	End Size [nt]	Area	% of total Area
18S	1,526	1,951	68.5	25.5
28S	3,227	3,959	124.4	46.3

Assay Class: Eukaryote Total RNA Nano  
Data Path: C:\...ents and Settings\Bioanalyzer\2012-05-14\2012-05-14\_001.xad

Created: 5/14/2012 10:34:52 AM  
Modified: 5/14/2012 10:58:40 AM

**Electropherogram Summary Continued ...**



**Overall Results for sample 9 : Sample 9**

RNA Area:	456.3	RNA Integrity Number (RIN):	9.8 (B.02.08)
RNA Concentration:	987 ng/μl	Result Flagging Color:	<span style="background-color: #ccccff; border: 1px solid black; display: inline-block; width: 20px; height: 10px;"></span>
rRNA Ratio [28s / 18s]:	2.0	Result Flagging Label:	RIN: 9.80

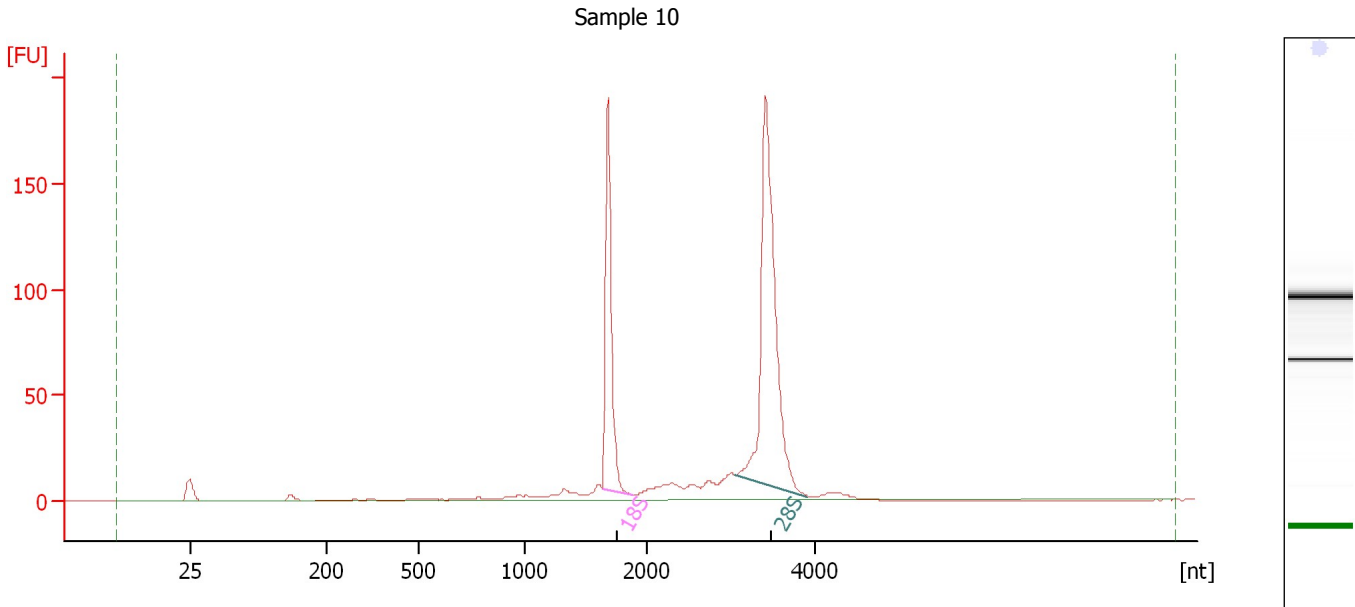
**Fragment table for sample 9 : Sample 9**

Name	Start Size [nt]	End Size [nt]	Area	% of total Area
18S	1,642	1,904	106.0	23.2
28S	3,120	3,960	211.2	46.3

Assay Class: Eukaryote Total RNA Nano  
 Data Path: C:\...ents and Settings\Bioanalyzer\2012-05-14\2012-05-14\_001.xad

Created: 5/14/2012 10:34:52 AM  
 Modified: 5/14/2012 10:58:40 AM

**Electropherogram Summary Continued ...**



**Overall Results for sample 10 : Sample 10**

RNA Area:	617.6	RNA Integrity Number (RIN):	9.6 (B.02.08)
RNA Concentration:	1,336 ng/μl	Result Flagging Color:	<span style="background-color: #ccccff; border: 1px solid black; display: inline-block; width: 20px; height: 10px;"></span>
rRNA Ratio [28s / 18s]:	1.9	Result Flagging Label:	RIN: 9.60

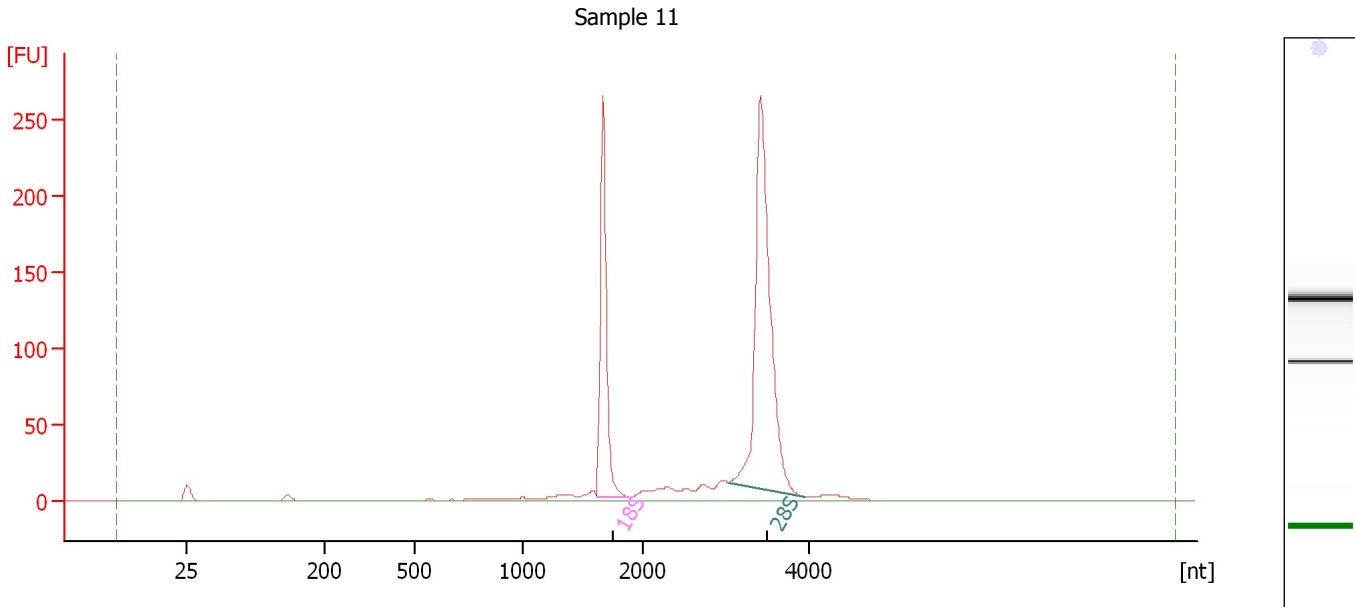
**Fragment table for sample 10 : Sample 10**

Name	Start Size [nt]	End Size [nt]	Area	% of total Area
18S	1,629	1,875	142.7	23.1
28S	3,061	3,919	271.9	44.0

Assay Class: Eukaryote Total RNA Nano  
Data Path: C:\...ents and Settings\Bioanalyzer\2012-05-14\2012-05-14\_001.xad

Created: 5/14/2012 10:34:52 AM  
Modified: 5/14/2012 10:58:40 AM

**Electropherogram Summary Continued ...**



**Overall Results for sample 11 : Sample 11**

RNA Area: 825.1                      RNA Integrity Number (RIN): 9.8 (B.02.08)  
RNA Concentration: 1,785 ng/μl                      Result Flagging Color:   
rRNA Ratio [28s / 18s]: 2.0                      Result Flagging Label: RIN: 9.80

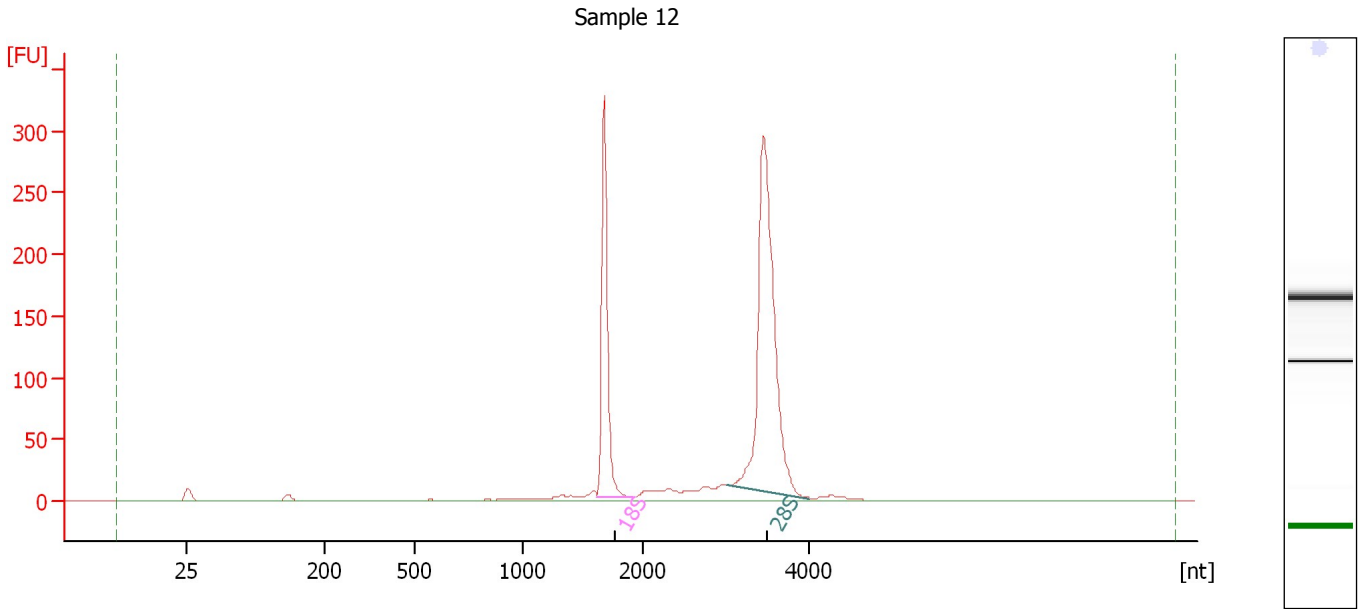
**Fragment table for sample 11 : Sample 11**

Name	Start Size [nt]	End Size [nt]	Area	% of total Area
18S	1,618	1,883	204.6	24.8
28S	3,025	3,938	412.1	49.9

Assay Class: Eukaryote Total RNA Nano  
Data Path: C:\...ents and Settings\Bioanalyzer\2012-05-14\2012-05-14\_001.xad

Created: 5/14/2012 10:34:52 AM  
Modified: 5/14/2012 10:58:40 AM

**Electropherogram Summary Continued ...**



**Overall Results for sample 12 : Sample 12**

RNA Area:	978.1	RNA Integrity Number (RIN):	9.9 (B.02.08)
RNA Concentration:	2,116 ng/μl	Result Flagging Color:	<span style="background-color: #ccccff; border: 1px solid black; display: inline-block; width: 20px; height: 10px;"></span>
rRNA Ratio [28s / 18s]:	2.0	Result Flagging Label:	RIN: 9.90

**Fragment table for sample 12 : Sample 12**

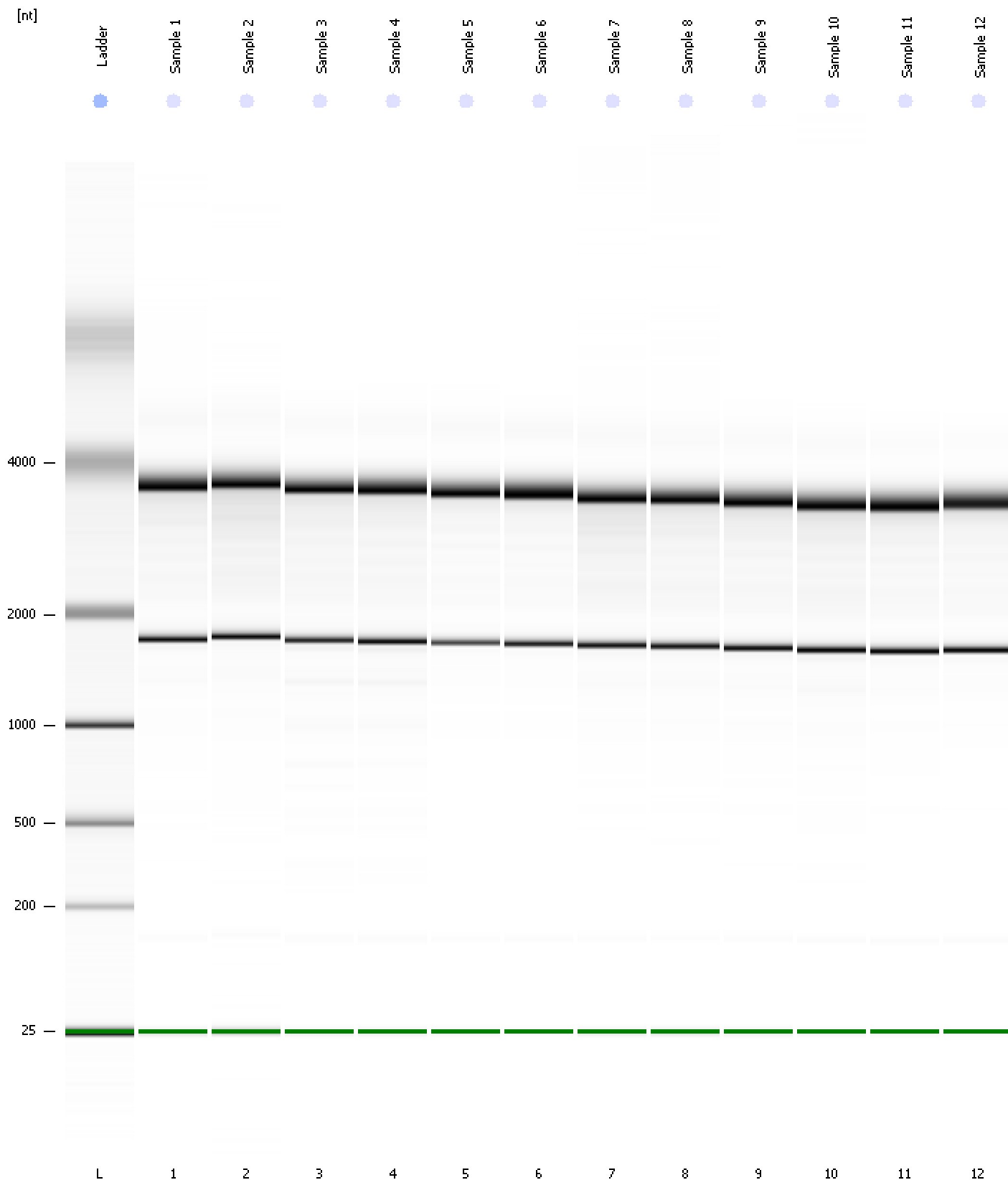
Name	Start Size [nt]	End Size [nt]	Area	% of total Area
18S	1,627	1,909	250.1	25.6
28S	2,999	4,003	498.9	51.0



Assay Class: Eukaryote Total RNA Nano  
Data Path: C:\...ents and Settings\Bioanalyzer\2012-05-14\2012-05-14\_001.xad

Created: 5/14/2012 10:34:52 AM  
Modified: 5/14/2012 10:58:40 AM

**Gel Image**



Assay Class: Eukaryote Total RNA Nano  
 Data Path: C:\...ents and Settings\Bioanalyzer\2012-05-14\2012-05-14\_001.xad

Created: 5/14/2012 10:34:52 AM  
 Modified: 5/14/2012 10:58:40 AM

**Run Logbook**

Description	Number	Source	Category	Sub Category	Time	Time Zone	User	Host
Run ended on port 1 (Number of wells acquired: 13)		Instrument	Run		5/14/2012 10:58:38 AM	(GMT --07:00) Pacific Standard Time	UC Davis	D8XSMGH1
Run started on port 1 (File: C:\Documents and Settings\Bioanalyzer\2012-05-14\2012-05-14_001.xad)		Instrument	Run		5/14/2012 10:34:57 AM	(GMT --07:00) Pacific Standard Time	UC Davis	D8XSMGH1
Product Number : G2938B		Instrument	Run		5/14/2012 10:34:57 AM	(GMT --07:00) Pacific Standard Time	UC Davis	D8XSMGH1
Name :		Instrument	Run		5/14/2012 10:34:57 AM	(GMT --07:00) Pacific Standard Time	UC Davis	D8XSMGH1
Vendor : Agilent Technologies		Instrument	Run		5/14/2012 10:34:57 AM	(GMT --07:00) Pacific Standard Time	UC Davis	D8XSMGH1
Serial# : DE13701086		Instrument	Run		5/14/2012 10:34:57 AM	(GMT --07:00) Pacific Standard Time	UC Davis	D8XSMGH1
Firmware : C.01.069		Instrument	Run		5/14/2012 10:34:57 AM	(GMT --07:00) Pacific Standard Time	UC Davis	D8XSMGH1
Cartridge : Electrode		Instrument	Run		5/14/2012 10:34:57 AM	(GMT --07:00) Pacific Standard Time	UC Davis	D8XSMGH1