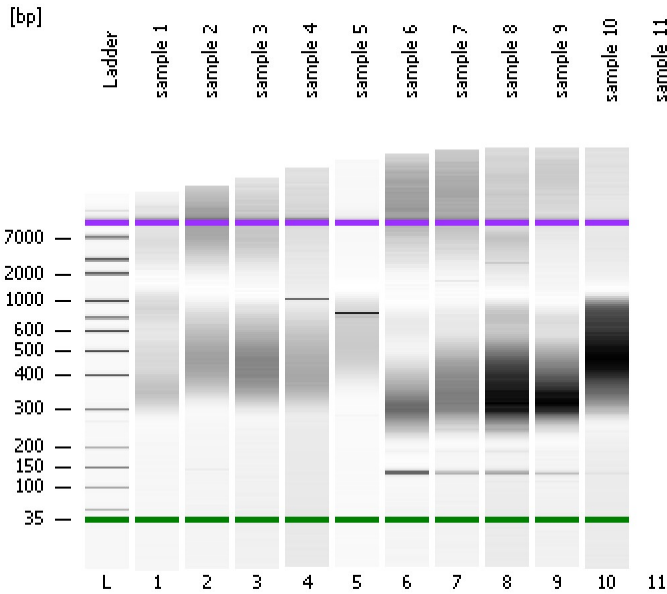


Assay Class: High Sensitivity DNA Assay
Data Path: C:\...ents and Settings\Bioanalyzer\2012-05-17\2012-05-17_003.xad

Created: 5/17/2012 12:17:50 PM
Modified: 5/17/2012 1:00:26 PM

Electrophoresis File Run Summary



Instrument Information:

Instrument Name: DE13701086 Firmware: C.01.069
Serial#: DE13701086 Type: G2938B

Assay Information:

Assay Origin Path: C:\Program Files\Agilent\2100 bioanalyzer\2100 expert\assays\dsDNA\High Sensitivity DNA.xsy
Assay Class: High Sensitivity DNA Assay
Version: 1.03
Assay Comments: Copyright © 2003-2010 Agilent Technologies

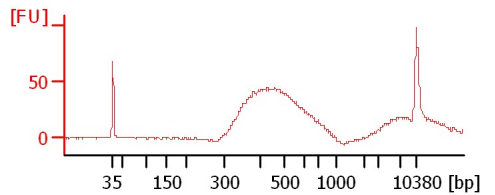
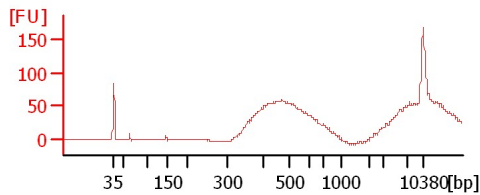
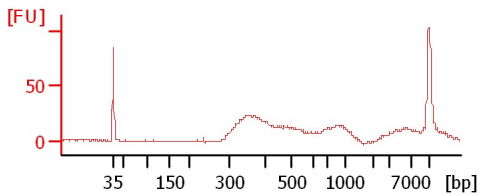
Chip Information:

Chip Lot #:
Reagent Kit Lot #:
Chip Comments:

sample 1

sample 2

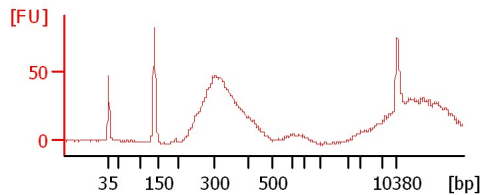
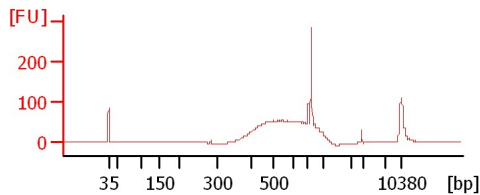
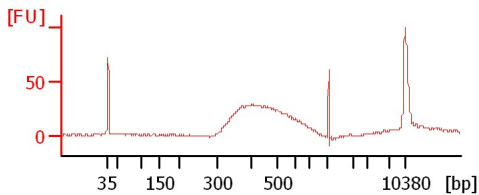
sample 3



sample 4

sample 5

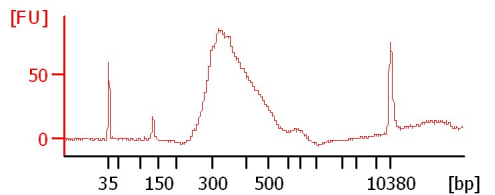
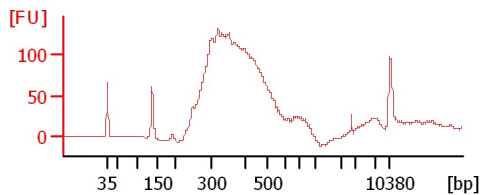
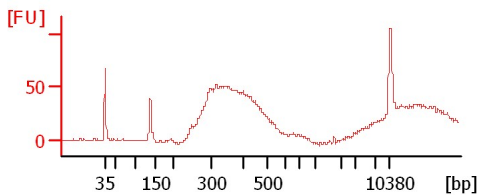
sample 6



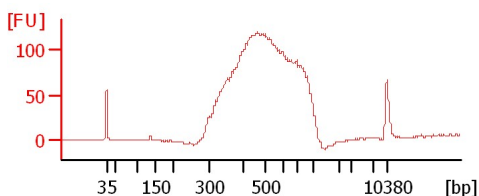
sample 7

sample 8

sample 9



sample 10



Assay Class: High Sensitivity DNA Assay
 Data Path: C:\...ents and Settings\Bioanalyzer\2012-05-17\2012-05-17_003.xad

Created: 5/17/2012 12:17:50 PM
 Modified: 5/17/2012 1:00:26 PM

Electrophoresis File Run Summary (Chip Summary)

Sample Name	Sample Comment	Rest. Digest	Status	Observation	Result Label	Result Color
sample 1		<input type="checkbox"/>	✓			
sample 2		<input type="checkbox"/>	✓			
sample 3		<input type="checkbox"/>	✓			
sample 4		<input type="checkbox"/>	✓			
sample 5		<input type="checkbox"/>	✓			
sample 6		<input type="checkbox"/>	✓			
sample 7		<input type="checkbox"/>	✓			
sample 8		<input type="checkbox"/>	✓			
sample 9		<input type="checkbox"/>	✓			
sample 10		<input type="checkbox"/>	✓			
sample 11		<input type="checkbox"/>	✓			
Ladder		<input type="checkbox"/>	✓			

Chip Lot #

Reagent Kit Lot #

Chip Comments :

Assay Class: High Sensitivity DNA Assay
Data Path: C:\...ents and Settings\Bioanalyzer\2012-05-17\2012-05-17_003.xad

Created: 5/17/2012 12:17:50 PM
Modified: 5/17/2012 1:00:26 PM

Electrophoresis Assay Details

General Analysis Settings

Number of Available Sample and Ladder Wells (Max.) : 12
Minimum Visible Range [s] : 32
Maximum Visible Range [s] : 138
Start Analysis Time Range [s] : 33
End Analysis Time Range [s] : 137.5
Ladder Concentration [pg/μl] : 1950
Uses Standard Area for Ladder Fragments
Lower Marker Concentration [pg/μl] : 125
Upper Marker Concentration [pg/μl] : 75
Used Upper Marker for Quantitation
Standard Curve Fit is Point to Point
Show Data Aligned to Lower and Upper Marker

Integrator Settings

Integration Start Time [s] : 33.05
Integration End Time [s] : 137
Slope Threshold : 0.8
Height Threshold [FU] : 5
Area Threshold : 0.1
Width Threshold [s] : 0.6
Baseline Plateau [s] : 0.5

Filter Settings

Filter Width [s] : 0.5
Polynomial Order : 4

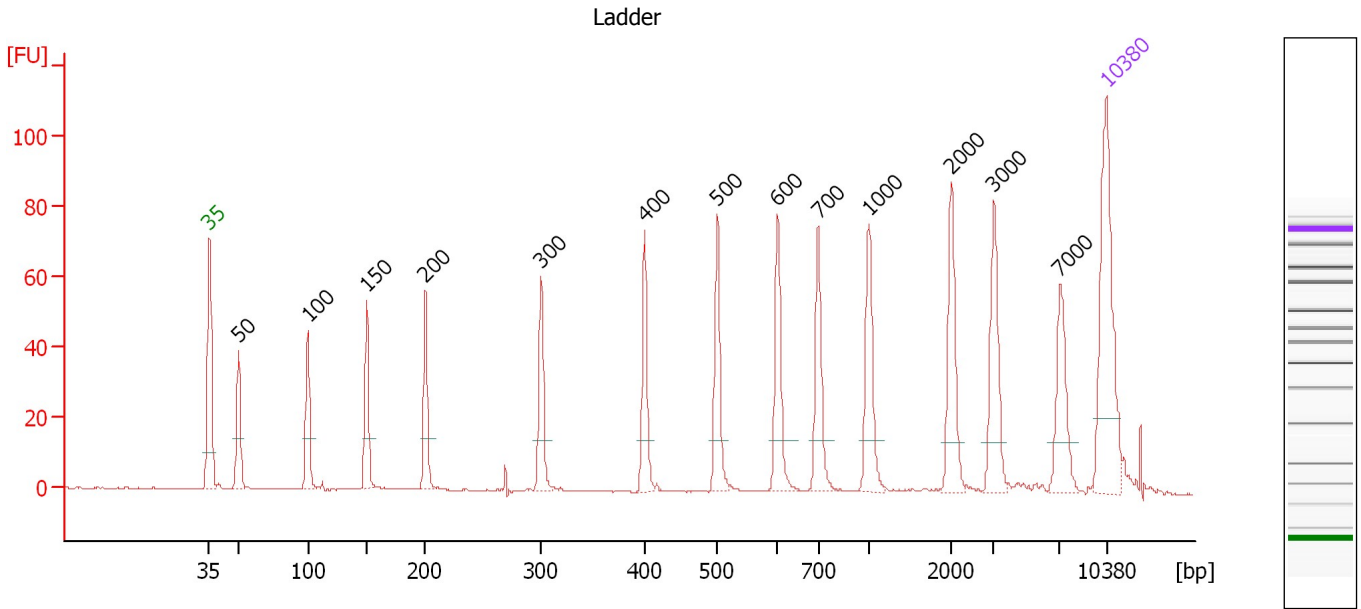
Ladder

Ladder Peak	Size	Area
1	35	160
2	50	210
3	100	208
4	150	221
5	200	242
6	300	270
7	400	305
8	500	306
9	600	336
10	700	321
11	1000	366
12	2000	413
13	3000	411
14	7000	400
15	10380	214

Assay Class: High Sensitivity DNA Assay
 Data Path: C:\...ents and Settings\Bioanalyzer\2012-05-17\2012-05-17_003.xad

Created: 5/17/2012 12:17:50 PM
 Modified: 5/17/2012 1:00:26 PM

Electropherogram Summary



Overall Results for Ladder

Noise: 0.2

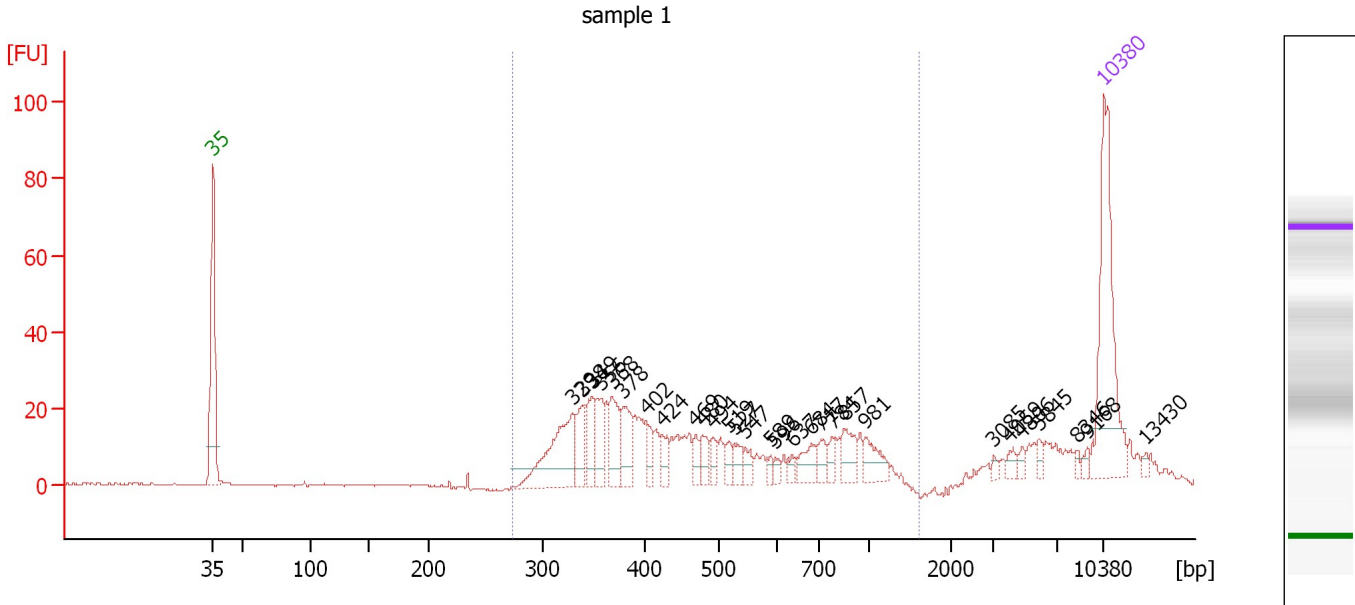
Peak table for Ladder

Peak	Size [bp]	Conc. [pg/μl]	Molarity [pmol/l]	Observations
1	35	125.00	5,411.3	Lower Marker
2	50	150.00	4,545.5	Ladder Peak
3	100	150.00	2,272.7	Ladder Peak
4	150	150.00	1,515.2	Ladder Peak
5	200	150.00	1,136.4	Ladder Peak
6	300	150.00	757.6	Ladder Peak
7	400	150.00	568.2	Ladder Peak
8	500	150.00	454.5	Ladder Peak
9	600	150.00	378.8	Ladder Peak
10	700	150.00	324.7	Ladder Peak
11	1,000	150.00	227.3	Ladder Peak
12	2,000	150.00	113.6	Ladder Peak
13	3,000	150.00	75.8	Ladder Peak
14	7,000	150.00	32.5	Ladder Peak
15	10,380	75.00	10.9	Upper Marker

Assay Class: High Sensitivity DNA Assay
 Data Path: C:\...ents and Settings\Bioanalyzer\2012-05-17\2012-05-17_003.xad

Created: 5/17/2012 12:17:50 PM
 Modified: 5/17/2012 1:00:26 PM

Electropherogram Summary Continued ...



Overall Results for sample 1 : sample 1

Number of peaks found: 29 Corr. Area 1: 438.3
 Noise: 0.2


Peak table for sample 1 : sample 1

Peak	Size [bp]	Conc. [pg/μl]	Molarity [pmol/l]	Observations
1	35	125.00	5,411.3	Lower Marker
2	329	69.85	322.1	
3	338	22.37	100.1	
4	349	24.17	105.0	
5	356	23.93	101.8	
6	368	27.79	114.4	
7	378	27.88	111.7	
8	402	11.19	42.2	
9	424	11.87	42.4	
10	469	8.47	27.4	
11	480	11.59	36.6	
12	494	8.67	26.6	
13	519	7.99	23.3	
14	527	9.97	28.7	
15	547	7.25	20.1	
16	589	3.87	10.0	
17	596	3.64	9.3	
18	637	4.12	9.8	
19	684	15.05	33.3	
20	717	8.47	17.9	
21	784	7.23	14.0	
22	857	16.29	28.8	
23	981	15.20	23.5	
24	3,085	2.24	1.1	
25	4,059	4.29	1.6	
26	4,806	3.56	1.1	


Assay Class: High Sensitivity DNA Assay
Data Path: C:\...ents and Settings\Bioanalyzer\2012-05-17\2012-05-17_003.xad

Created: 5/17/2012 12:17:50 PM
Modified: 5/17/2012 1:00:26 PM

Electropherogram Summary Continued ...**... Peak table for sample 1 : sample 1**

Peak	Size [bp]	Conc. [pg/ μ l]	Molarity [pmol/l]	Observations
27	5,845	3.73	1.0	
28	8,346	2.35	0.4	
29	9,168	2.90	0.5	
30	 10,380	75.00	10.9	Upper Marker
31	13,430	0.00	0.0	

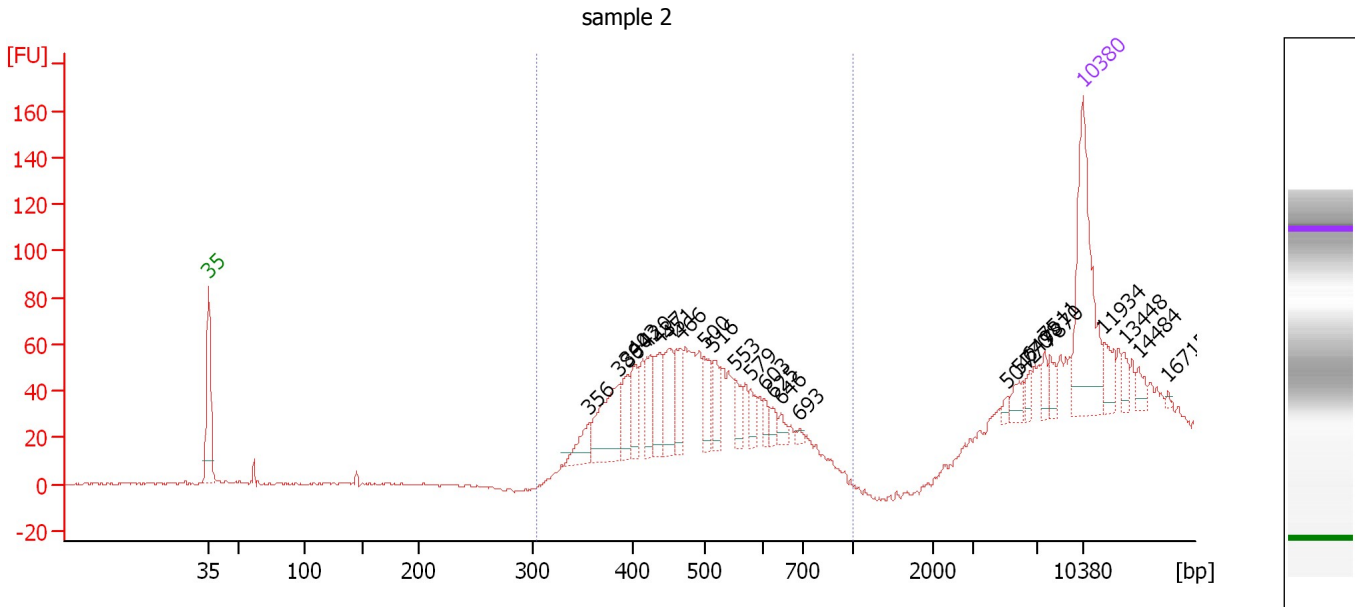
Region table for sample 1 : sample 1

From [bp]	Molarity [pmol/l]	Average Size [bp]	Conc. [pg/ μ l]	To [bp]	Corr. Area	% of Total	Size distribution in CV [%]	Color
275	1,480.4	515	421.28	1,613	438.3	85	42.8	

Assay Class: High Sensitivity DNA Assay
 Data Path: C:\...ents and Settings\Bioanalyzer\2012-05-17\2012-05-17_003.xad

Created: 5/17/2012 12:17:50 PM
 Modified: 5/17/2012 1:00:26 PM

Electropherogram Summary Continued ...



Overall Results for sample 2 : sample 2

Number of peaks found: 25 Corr. Area 1: 665.4
 Noise: 0.3

Peak table for sample 2 : sample 2

Peak	Size [bp]	Conc. [pg/μl]	Molarity [pmol/l]	Observations
1	35	125.00	5,411.3	Lower Marker
2	356	18.81	80.1	
3	386	54.51	214.0	
4	394	23.87	91.7	
5	403	23.11	87.0	
6	420	23.64	85.3	
7	437	28.46	98.7	
8	451	32.16	108.0	
9	466	27.11	88.1	
10	500	24.71	74.9	
11	516	18.96	55.6	
12	553	12.58	34.5	
13	579	10.77	28.2	
14	603	7.79	19.6	
15	625	6.69	16.2	
16	646	6.09	14.3	
17	693	2.81	6.1	
18	5,042	2.89	0.9	
19	5,770	7.34	1.9	
20	6,498	5.46	1.3	
21	7,511	6.66	1.3	
22	7,870	7.59	1.5	
23	10,380	75.00	10.9	Upper Marker
24	11,934	0.00	0.0	
25	13,448	0.00	0.0	
26	14,484	0.00	0.0	


Assay Class: High Sensitivity DNA Assay
Data Path: C:\...ents and Settings\Bioanalyzer\2012-05-17\2012-05-17_003.xad

Created: 5/17/2012 12:17:50 PM
Modified: 5/17/2012 1:00:26 PM

Electropherogram Summary Continued ...**... Peak table for sample 2 : sample 2**

Peak	Size [bp]	Conc. [pg/ μ l]	Molarity [pmol/l]	Observations
27	16,715	0.00	0.0	

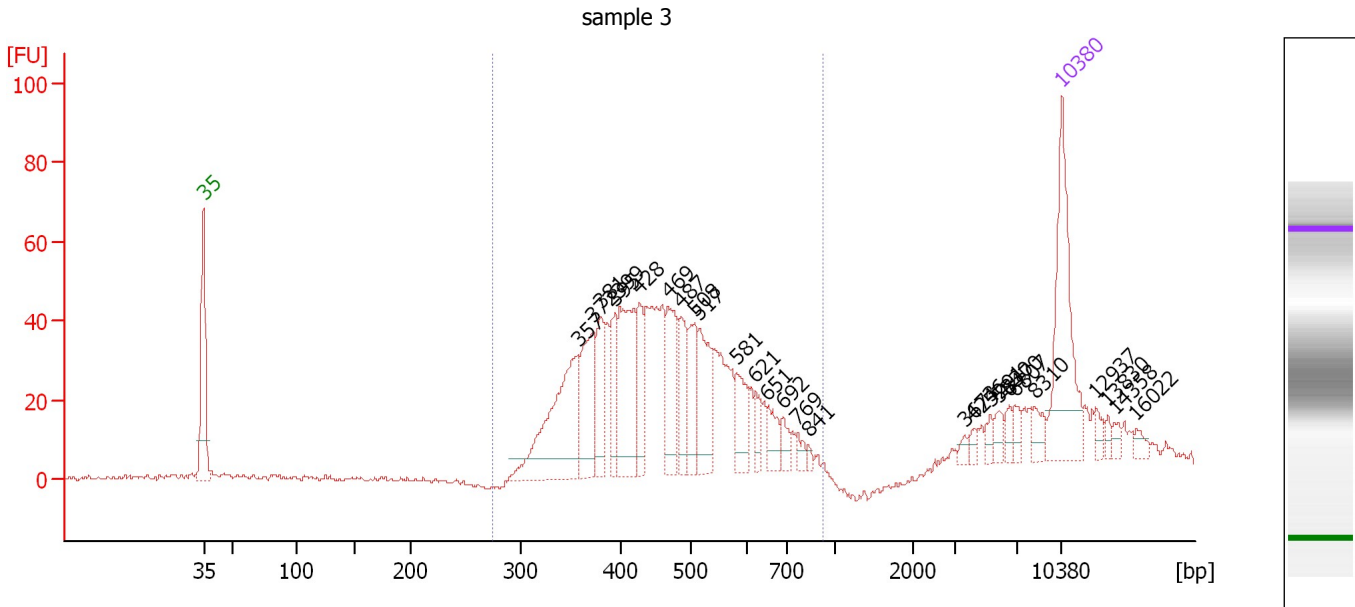
Region table for sample 2 : sample 2

From [bp]	Molarity [pmol/l]	Average Size [bp]	Conc. [pg/ μ l]	To [bp]	Corr. Area	% of Total	Size distribution in CV [%]	Color
304	1,380.6	476	418.44	1,000	665.4	72	16.5	

Assay Class: High Sensitivity DNA Assay
 Data Path: C:\...ents and Settings\Bioanalyzer\2012-05-17\2012-05-17_003.xad

Created: 5/17/2012 12:17:50 PM
 Modified: 5/17/2012 1:00:26 PM

Electropherogram Summary Continued ...



Overall Results for sample 3 : sample 3

Number of peaks found: 27 Corr. Area 1: 799.7
 Noise: 0.6

Peak table for sample 3 : sample 3

Peak	Size [bp]	Conc. [pg/μl]	Molarity [pmol/l]	Observations
1	35	125.00	5,411.3	Lower Marker
2	357	121.27	514.1	
3	372	62.44	254.0	
4	381	39.01	155.3	
5	395	30.00	115.2	
6	399	85.69	325.1	
7	428	33.02	116.8	
8	469	51.08	165.2	
9	487	32.64	101.6	
10	508	36.58	109.0	
11	517	51.54	151.2	
12	581	28.20	73.6	
13	621	12.04	29.4	
14	651	16.38	38.1	
15	692	10.48	23.0	
16	769	6.39	12.6	
17	841	2.59	4.7	
18	3,673	3.80	1.6	
19	4,246	4.53	1.6	
20	5,291	5.45	1.6	
21	5,830	7.14	1.9	
22	6,470	6.02	1.4	
23	6,807	7.07	1.6	
24	8,310	9.85	1.8	
25	10,380	75.00	10.9	Upper Marker
26	12,937	0.00	0.0	


Assay Class: High Sensitivity DNA Assay
Data Path: C:\...ents and Settings\Bioanalyzer\2012-05-17\2012-05-17_003.xad

Created: 5/17/2012 12:17:50 PM
Modified: 5/17/2012 1:00:26 PM

Electropherogram Summary Continued ...**... Peak table for sample 3 : sample 3**

Peak	Size [bp]	Conc. [pg/μl]	Molarity [pmol/l]	Observations
27	13,830	0.00	0.0	
28	14,358	0.00	0.0	
29	16,022	0.00	0.0	

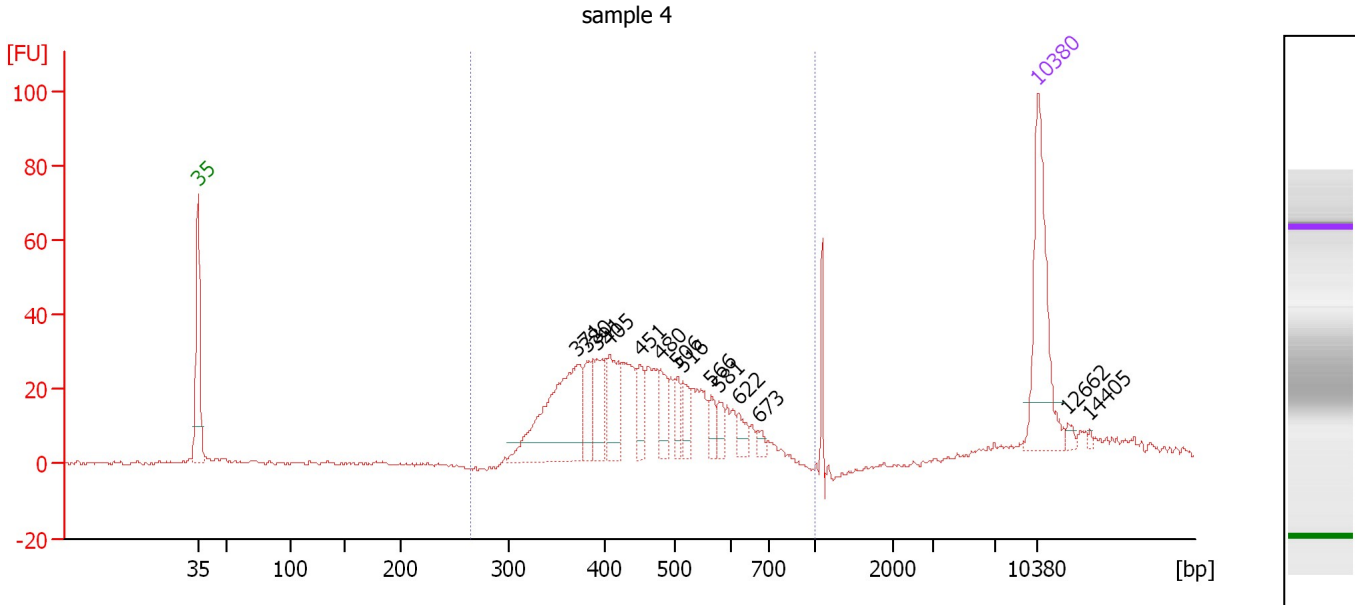
Region table for sample 3 : sample 3

From [bp]	Molarity [pmol/l]	Average Size [bp]	Conc. [pg/μl]	To [bp]	Corr. Area	% of Total	Size distribution in CV [%]	Color
275	2,617.5	467	761.77	931	799.7	86	21.7	

Assay Class: High Sensitivity DNA Assay
 Data Path: C:\...ents and Settings\Bioanalyzer\2012-05-17\2012-05-17_003.xad

Created: 5/17/2012 12:17:50 PM
 Modified: 5/17/2012 1:00:26 PM

Electropherogram Summary Continued ...



Overall Results for sample 4 : sample 4

Number of peaks found: 14 Corr. Area 1: 501.2
 Noise: 0.4

Peak table for sample 4 : sample 4

Peak	Size [bp]	Conc. [pg/μl]	Molarity [pmol/l]	Observations
1	35	125.00	5,411.3	Lower Marker
2	371	133.46	545.4	
3	380	29.83	118.9	
4	391	34.74	134.7	
5	405	43.20	161.5	
6	451	21.31	71.7	
7	480	23.25	73.4	
8	506	15.16	45.4	
9	516	16.16	47.5	
10	566	12.43	33.3	
11	581	10.70	27.9	
12	622	10.95	26.7	
13	673	5.39	12.1	
14	10,380	75.00	10.9	Upper Marker
15	12,662	0.00	0.0	
16	14,405	0.00	0.0	

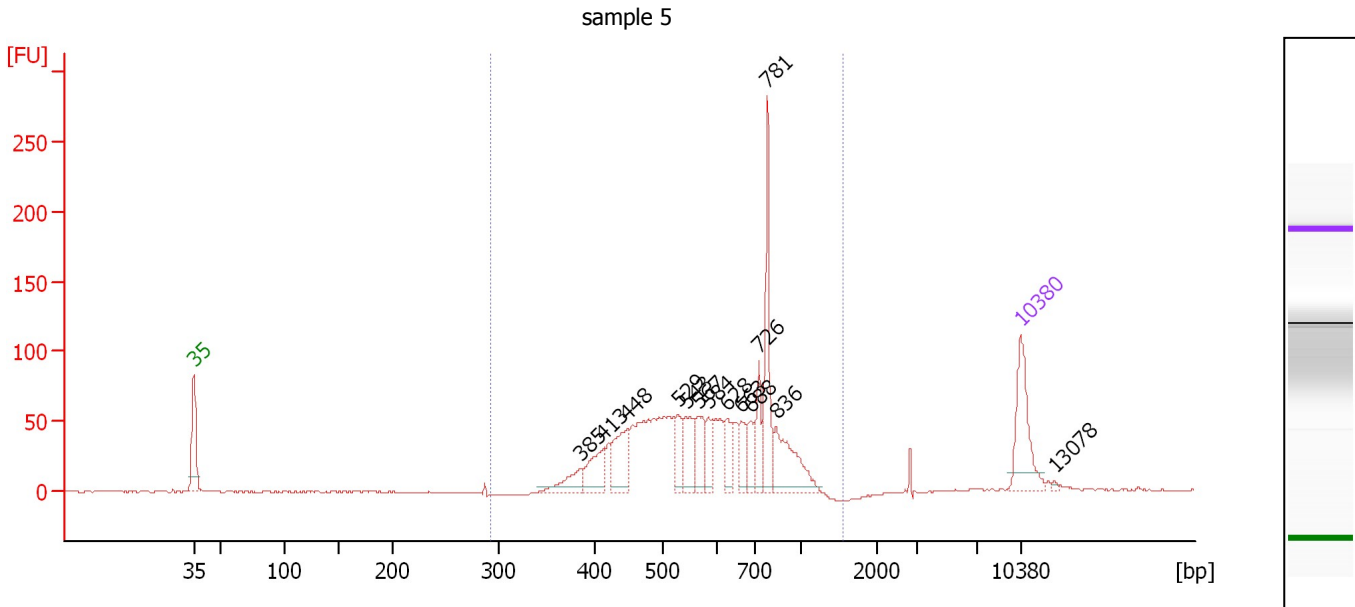
Region table for sample 4 : sample 4

From [bp]	Molarity [pmol/l]	Average Size [bp]	Conc. [pg/μl]	To [bp]	Corr. Area	% of Total	Size distribution in CV [%]	Color
265	1,748.8	455	498.24	1,000	501.2	91	20.2	Blue

Assay Class: High Sensitivity DNA Assay
 Data Path: C:\...ents and Settings\Bioanalyzer\2012-05-17\2012-05-17_003.xad

Created: 5/17/2012 12:17:50 PM
 Modified: 5/17/2012 1:00:26 PM

Electropherogram Summary Continued ...



Overall Results for sample 5 : sample 5

Number of peaks found: 14 Corr. Area 1: 1,131.9
 Noise: 0.3

Peak table for sample 5 : sample 5

Peak	Size [bp]	Conc. [pg/μl]	Molarity [pmol/l]	Observations
1	35	125.00	5,411.3	Lower Marker
2	385	37.17	146.1	
3	413	54.57	200.3	
4	448	69.27	234.1	
5	529	42.50	121.8	
6	543	61.61	171.8	
7	567	44.36	118.6	
8	584	30.63	79.4	
9	628	40.81	98.5	
10	663	33.20	75.9	
11	688	33.36	73.4	
12	726	41.31	86.2	
13	781	102.70	199.3	
14	836	95.81	173.7	
15	10,380	75.00	10.9	Upper Marker
16	13,078	0.00	0.0	

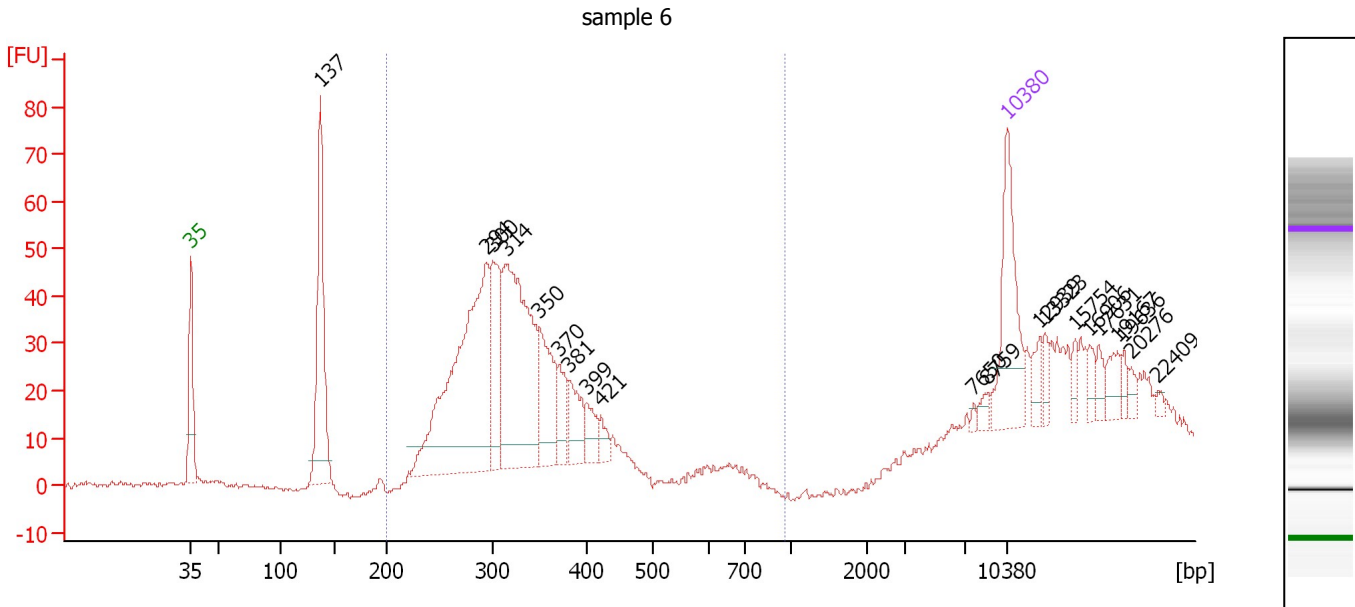
Region table for sample 5 : sample 5

From [bp]	Molarity [pmol/l]	Average Size [bp]	Conc. [pg/μl]	To [bp]	Corr. Area	% of Total	Size distribution in CV [%]	Color
292	2,639.1	608	972.57	1,534	1,131.9	98	26.2	Blue

Assay Class: High Sensitivity DNA Assay
 Data Path: C:\...ents and Settings\Bioanalyzer\2012-05-17\2012-05-17_003.xad

Created: 5/17/2012 12:17:50 PM
 Modified: 5/17/2012 1:00:26 PM

Electropherogram Summary Continued ...



Overall Results for sample 6 : sample 6

Number of peaks found: 20 Corr. Area 1: 572.8
 Noise: 0.6

Peak table for sample 6 : sample 6

Peak	Size [bp]	Conc. [pg/μl]	Molarity [pmol/l]	Observations
1	35	125.00	5,411.3	Lower Marker
2	137	189.33	2,089.4	
3	294	341.65	1,762.8	
4	300	94.38	476.2	
5	314	254.09	1,226.7	
6	350	85.02	368.6	
7	370	32.55	133.1	
8	381	37.21	147.9	
9	399	23.46	89.1	
10	421	12.38	44.6	
11	7,650	2.58	0.5	
12	8,759	6.07	1.0	
13	10,380	75.00	10.9	Upper Marker
14	12,939	0.00	0.0	
15	13,323	0.00	0.0	
16	15,754	0.00	0.0	
17	16,906	0.00	0.0	
18	17,631	0.00	0.0	
19	19,167	0.00	0.0	
20	19,636	0.00	0.0	
21	20,276	0.00	0.0	
22	22,409	0.00	0.0	

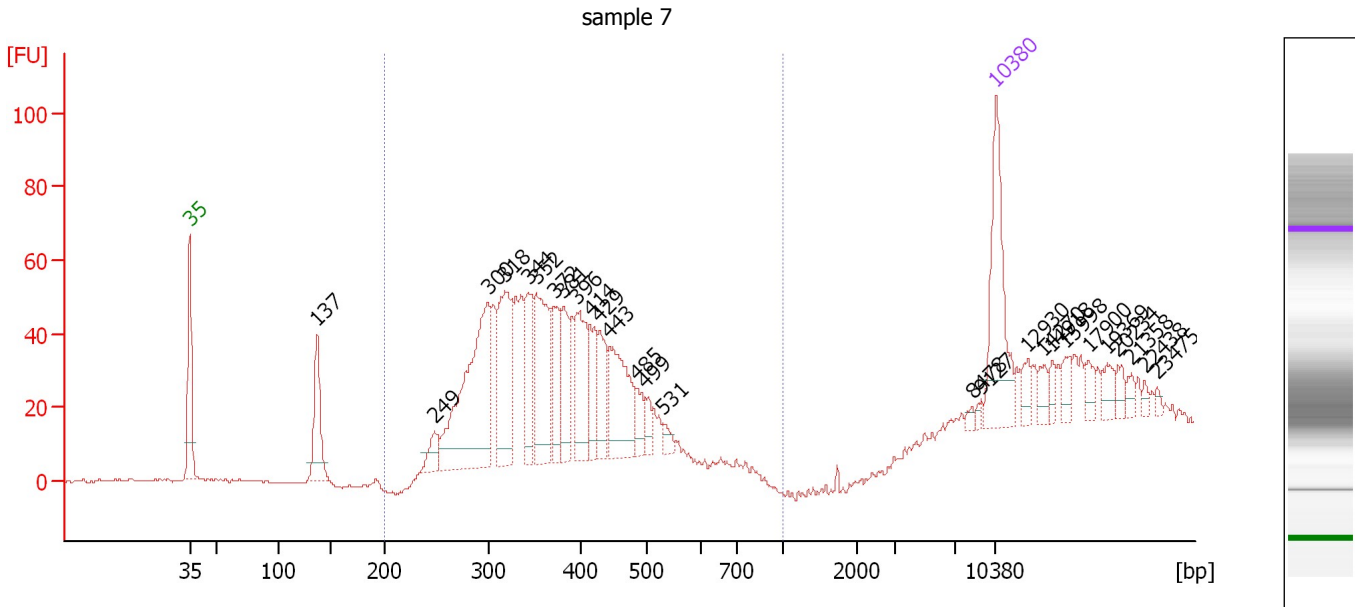
Region table for sample 6 : sample 6

From [bp]	Molarity [pmol/l]	Average Size [bp]	Conc. [pg/μl]	To [bp]	Corr. Area	% of Total	Size distribution in CV [%]	Color
200	4,095.8	319	841.83	960	572.8	68	14.0	Blue

Assay Class: High Sensitivity DNA Assay
 Data Path: C:\...ents and Settings\Bioanalyzer\2012-05-17\2012-05-17_003.xad

Created: 5/17/2012 12:17:50 PM
 Modified: 5/17/2012 1:00:26 PM

Electropherogram Summary Continued ...



Overall Results for sample 7 : sample 7

Number of peaks found: 27 Corr. Area 1: 851.0
 Noise: 0.4

Peak table for sample 7 : sample 7

Peak	Size [bp]	Conc. [pg/μl]	Molarity [pmol/l]	Observations
1	35	125.00	5,411.3	Lower Marker
2	137	69.73	771.9	
3	249	20.50	124.9	
4	300	205.22	1,034.7	
5	318	107.64	513.3	
6	344	57.75	254.7	
7	352	98.58	424.2	
8	372	40.61	165.6	
9	381	43.96	174.7	
10	396	65.60	251.2	
11	414	41.05	150.2	
12	429	39.26	138.7	
13	443	79.76	272.5	
14	485	17.51	54.7	
15	499	12.31	37.4	
16	531	8.61	24.6	
17	8,478	3.19	0.6	
18	9,127	3.07	0.5	
19	10,380	75.00	10.9	Upper Marker
20	12,930	0.00	0.0	
21	14,270	0.00	0.0	
22	14,918	0.00	0.0	
23	15,998	0.00	0.0	
24	17,900	0.00	0.0	
25	19,369	0.00	0.0	
26	20,234	0.00	0.0	


Assay Class: High Sensitivity DNA Assay
Data Path: C:\...ents and Settings\Bioanalyzer\2012-05-17\2012-05-17_003.xad

Created: 5/17/2012 12:17:50 PM
Modified: 5/17/2012 1:00:26 PM

Electropherogram Summary Continued ...**... Peak table for sample 7 : sample 7**

Peak	Size [bp]	Conc. [pg/μl]	Molarity [pmol/l]	Observations
27	21,358	0.00	0.0	
28	22,438	0.00	0.0	
29	23,475	0.00	0.0	

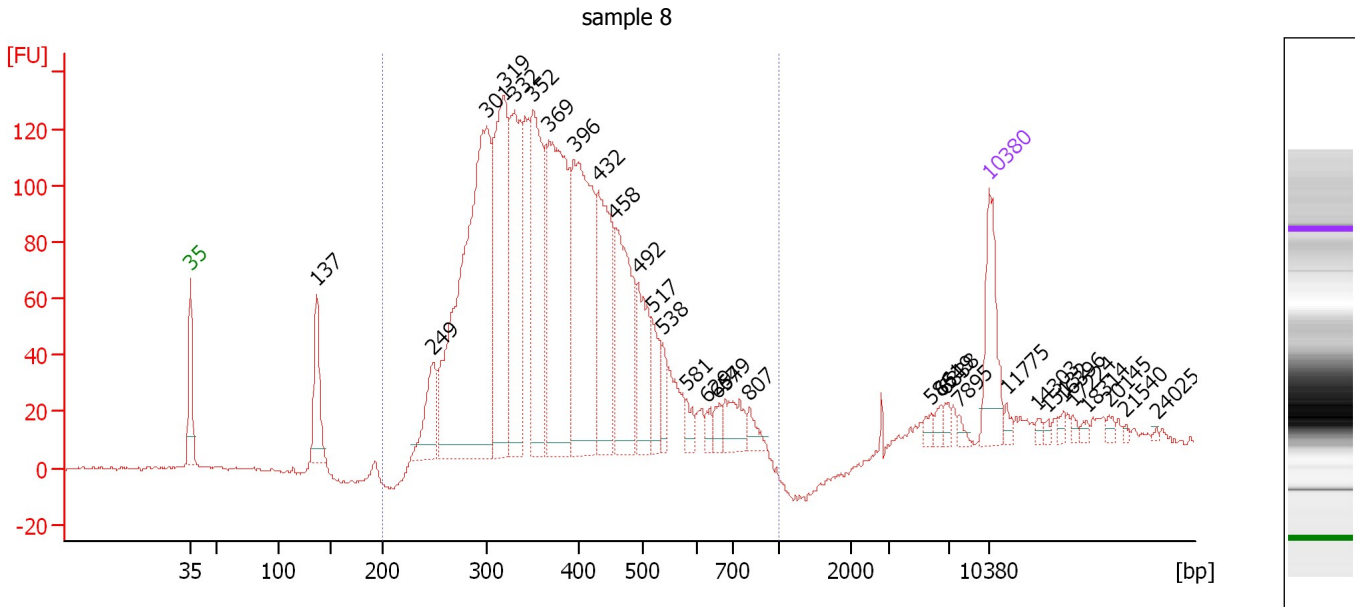
Region table for sample 7 : sample 7

From [bp]	Molarity [pmol/l]	Average Size [bp]	Conc. [pg/μl]	To [bp]	Corr. Area	% of Total	Size distribution in CV [%]	Color
200	4,048.4	367	939.15	1,000	851.0	79	17.9	

Assay Class: High Sensitivity DNA Assay
 Data Path: C:\...ents and Settings\Bioanalyzer\2012-05-17\2012-05-17_003.xad

Created: 5/17/2012 12:17:50 PM
 Modified: 5/17/2012 1:00:26 PM

Electropherogram Summary Continued ...



Overall Results for sample 8 : sample 8

Number of peaks found: 31 Corr. Area 1: 2,726.4
 Noise: 0.6

Peak table for sample 8 : sample 8

Peak	Size [bp]	Conc. [pg/μl]	Molarity [pmol/l]	Observations
1	35	125.00	5,411.3	Lower Marker
2	137	104.44	1,155.8	
3	249	89.49	544.2	
4	301	699.97	3,523.9	
5	319	328.66	1,558.7	
6	332	234.75	1,072.5	
7	352	254.09	1,094.1	
8	369	392.82	1,614.5	
9	396	340.70	1,304.1	
10	432	205.20	720.1	
11	458	187.38	619.9	
12	492	106.30	327.1	
13	517	45.64	133.8	
14	538	29.71	83.7	
15	581	19.03	49.6	
16	629	12.40	29.9	
17	654	16.22	37.6	
18	679	43.44	97.0	
19	807	18.29	34.3	
20	5,861	8.55	2.2	
21	6,549	8.78	2.0	
22	6,838	8.59	1.9	
23	7,895	5.96	1.1	
24	10,380	75.00	10.9	Upper Marker
25	11,775	0.00	0.0	
26	14,303	0.00	0.0	

Assay Class: High Sensitivity DNA Assay
 Data Path: C:\...ents and Settings\Bioanalyzer\2012-05-17\2012-05-17_003.xad


Created: 5/17/2012 12:17:50 PM
 Modified: 5/17/2012 1:00:26 PM

Electropherogram Summary Continued ...

... Peak table for sample 8 : sample 8

Peak	Size [bp]	Conc. [pg/μl]	Molarity [pmol/l]	Observations
27	15,132	0.00	0.0	
28	16,396	0.00	0.0	
29	17,224	0.00	0.0	
30	18,314	0.00	0.0	
31	20,145	0.00	0.0	
32	21,540	0.00	0.0	
33	24,025	0.00	0.0	

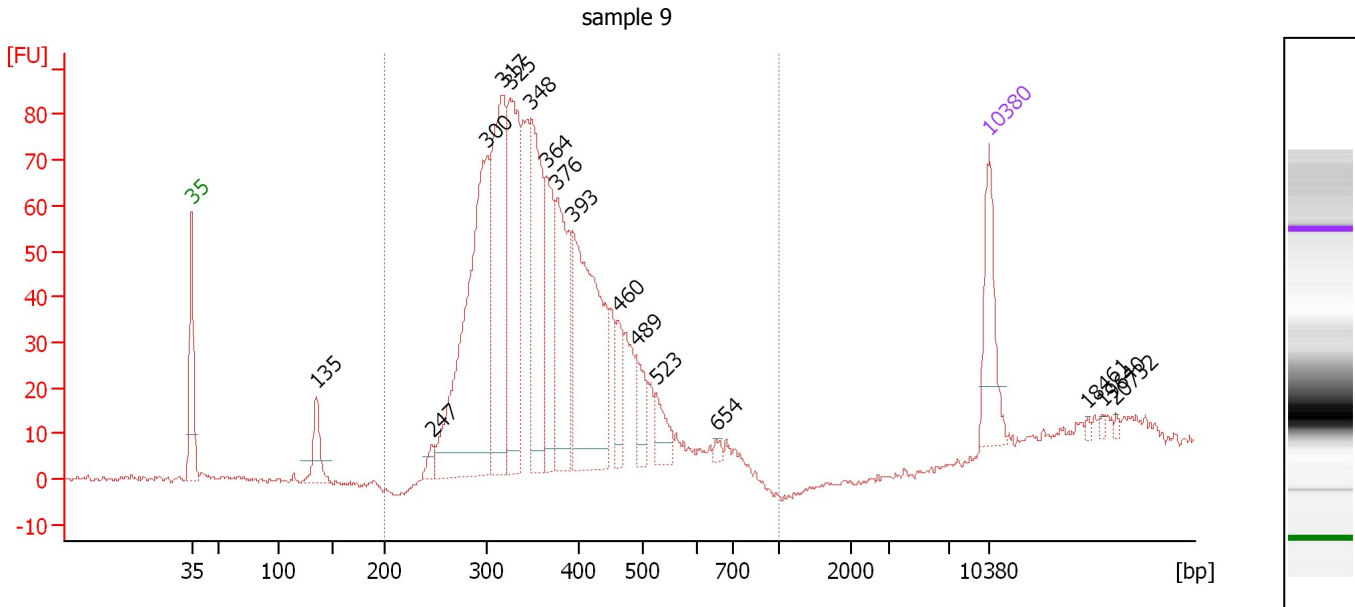
Region table for sample 8 : sample 8

From [bp]	Molarity [pmol/l]	Average Size [bp]	Conc. [pg/μl]	To [bp]	Corr. Area	% of Total	Size distribution in CV [%]	Color
200	14,108.7	390	3,345.33	1,000	2,726.4	92	27.0	

Assay Class: High Sensitivity DNA Assay
 Data Path: C:\...ents and Settings\Bioanalyzer\2012-05-17\2012-05-17_003.xad

Created: 5/17/2012 12:17:50 PM
 Modified: 5/17/2012 1:00:26 PM

Electropherogram Summary Continued ...



Overall Results for sample 9 : sample 9

Number of peaks found: 16 Corr. Area 1: 1,287.3
 Noise: 0.7

Peak table for sample 9 : sample 9

Peak	Size [bp]	Conc. [pg/μl]	Molarity [pmol/l]	Observations
1	35	125.00	5,411.3	Lower Marker
2	135	62.68	702.8	
3	247	15.82	97.0	
4	300	498.81	2,515.4	
5	317	324.87	1,554.3	
6	325	264.00	1,229.4	
7	348	231.45	1,007.8	
8	364	130.05	541.0	
9	376	176.32	709.8	
10	393	317.00	1,221.6	
11	460	47.65	156.9	
12	489	44.51	138.0	
13	523	39.04	113.0	
14	654	6.48	15.0	
15	10,380	75.00	10.9	Upper Marker
16	18,461	0.00	0.0	
17	19,640	0.00	0.0	
18	20,732	0.00	0.0	

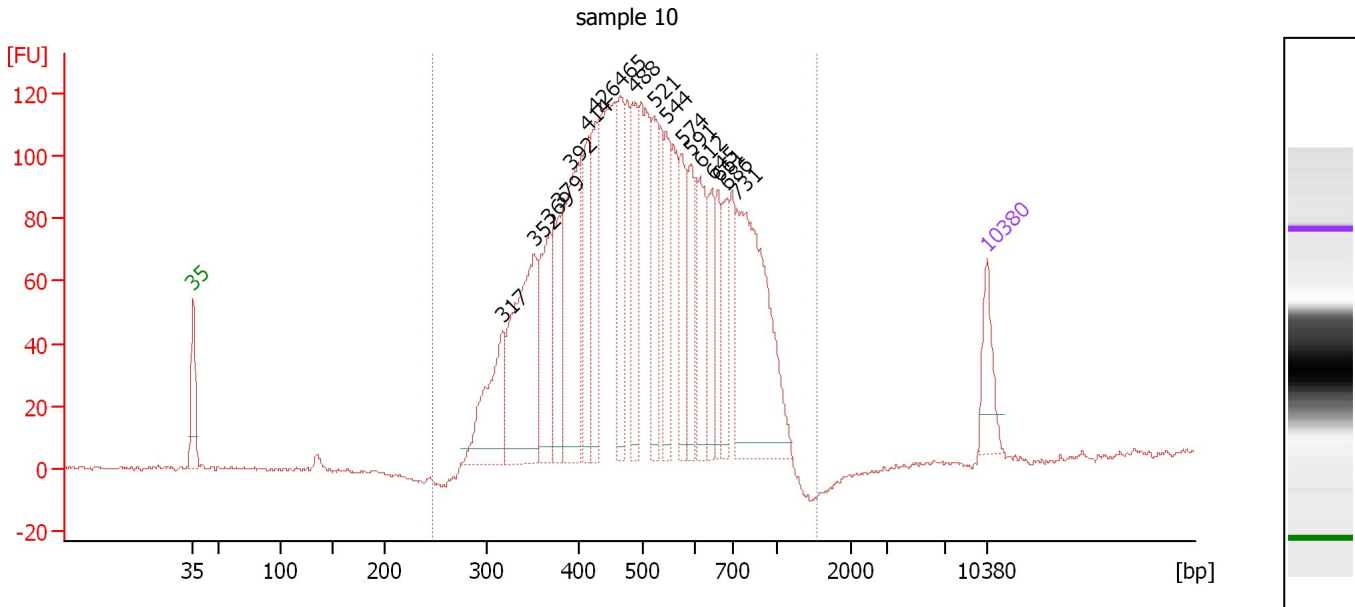
Region table for sample 9 : sample 9

From [bp]	Molarity [pmol/l]	Average Size [bp]	Conc. [pg/μl]	To [bp]	Corr. Area	% of Total	Size distribution in CV [%]	Color
200	10,138.5	366	2,342.96	1,000	1,287.3	95	19.5	Blue

Assay Class: High Sensitivity DNA Assay
 Data Path: C:\...ents and Settings\Bioanalyzer\2012-05-17\2012-05-17_003.xad

Created: 5/17/2012 12:17:50 PM
 Modified: 5/17/2012 1:00:26 PM

Electropherogram Summary Continued ...



Overall Results for sample 10 : sample 10

Number of peaks found: 18 Corr. Area 1: 2,697.4
 Noise: 0.6

Peak table for sample 10 : sample 10

Peak	Size [bp]	Conc. [pg/μl]	Molarity [pmol/l]	Observations
1	35	125.00	5,411.3	Lower Marker
2	317	240.44	1,148.0	
3	352	439.24	1,892.3	
4	369	217.46	893.9	
5	379	199.85	800.0	
6	392	365.09	1,411.4	
7	414	178.64	653.6	
8	426	160.54	571.4	
9	465	167.93	546.8	
10	488	186.93	580.9	
11	521	171.15	497.6	
12	544	136.02	378.6	
13	574	120.77	319.0	
14	591	157.54	404.1	
15	612	163.45	405.0	
16	645	111.61	262.1	
17	661	101.94	233.5	
18	686	101.27	223.6	
19	731	514.44	1,066.1	
20	10,380	75.00	10.9	Upper Marker

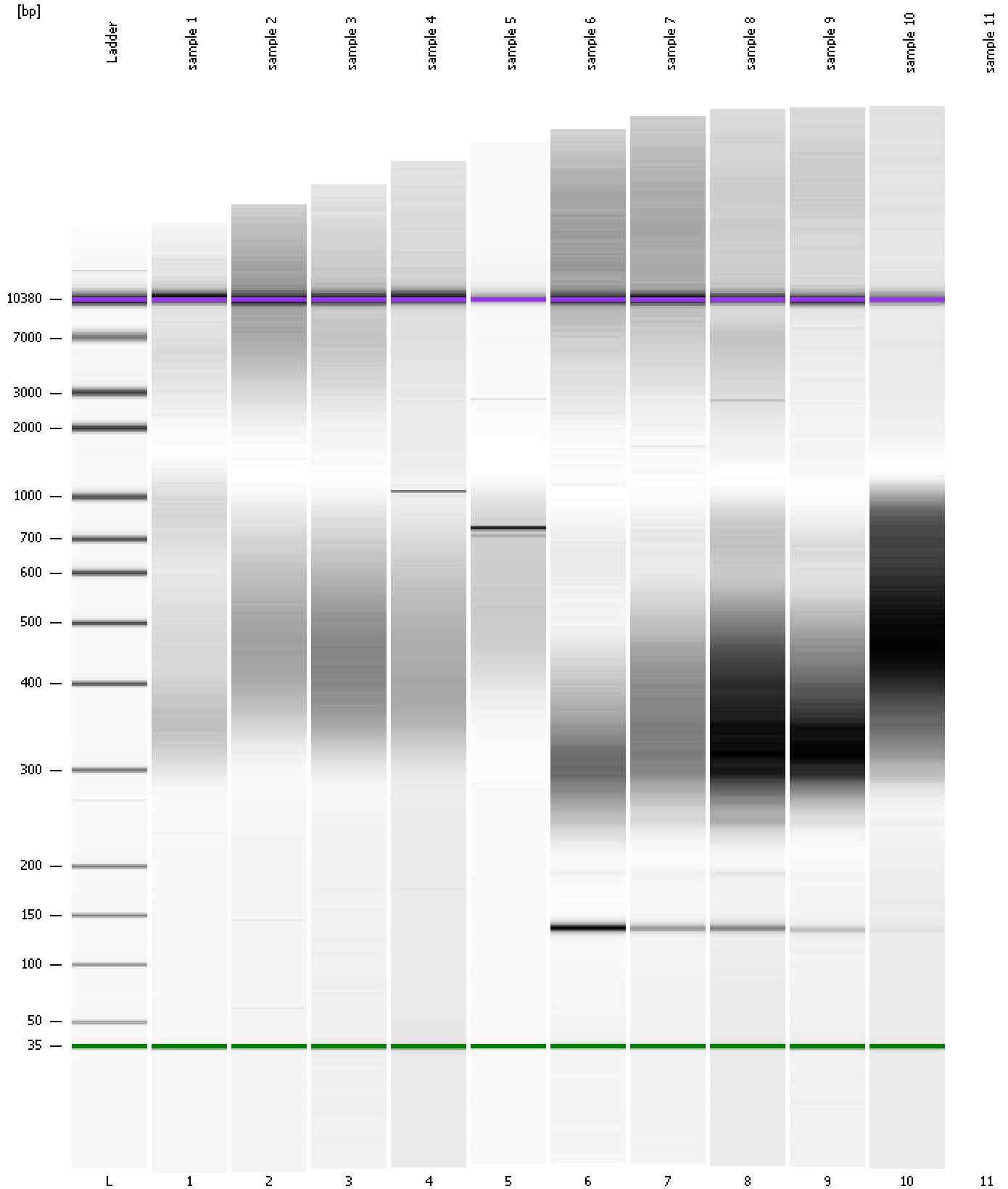
Region table for sample 10 : sample 10

From [bp]	Molarity [pmol/l]	Average Size [bp]	Conc. [pg/μl]	To [bp]	Corr. Area	% of Total	Size distribution in CV [%]	Color
246	16,027.1	527	4,976.10	1,552	2,697.4	100	30.9	Blue

Assay Class: High Sensitivity DNA Assay
Data Path: C:\...ents and Settings\Bioanalyzer\2012-05-17\2012-05-17_003.xad

Created: 5/17/2012 12:17:50 PM
Modified: 5/17/2012 1:00:26 PM

Gel Image



Assay Class: High Sensitivity DNA Assay
 Data Path: C:\...ents and Settings\Bioanalyzer\2012-05-17\2012-05-17_003.xad

Created: 5/17/2012 12:17:50 PM
 Modified: 5/17/2012 1:00:26 PM

Run Logbook

Description	Number	Source	Category	Sub Category	Time	Time Zone	User	Host
Run ended on port 1 (Number of wells acquired: 11)		Instrument	Run		5/17/2012 12:56:17 PM	(GMT --07:00) Pacific Standard Time	UC Davis	D8XSMGH1
Run started on port 1 (File: C:\Documents and Settings\Bioanalyzer\2012-05-17\2012-05-17_003.xad)		Instrument	Run		5/17/2012 12:17:55 PM	(GMT --07:00) Pacific Standard Time	UC Davis	D8XSMGH1
Product Number : G2938B		Instrument	Run		5/17/2012 12:17:55 PM	(GMT --07:00) Pacific Standard Time	UC Davis	D8XSMGH1
Name :		Instrument	Run		5/17/2012 12:17:55 PM	(GMT --07:00) Pacific Standard Time	UC Davis	D8XSMGH1
Vendor : Agilent Technologies		Instrument	Run		5/17/2012 12:17:55 PM	(GMT --07:00) Pacific Standard Time	UC Davis	D8XSMGH1
Serial# : DE13701086		Instrument	Run		5/17/2012 12:17:55 PM	(GMT --07:00) Pacific Standard Time	UC Davis	D8XSMGH1
Firmware : C.01.069		Instrument	Run		5/17/2012 12:17:55 PM	(GMT --07:00) Pacific Standard Time	UC Davis	D8XSMGH1
Cartridge : Electrode		Instrument	Run		5/17/2012 12:17:55 PM	(GMT --07:00) Pacific Standard Time	UC Davis	D8XSMGH1