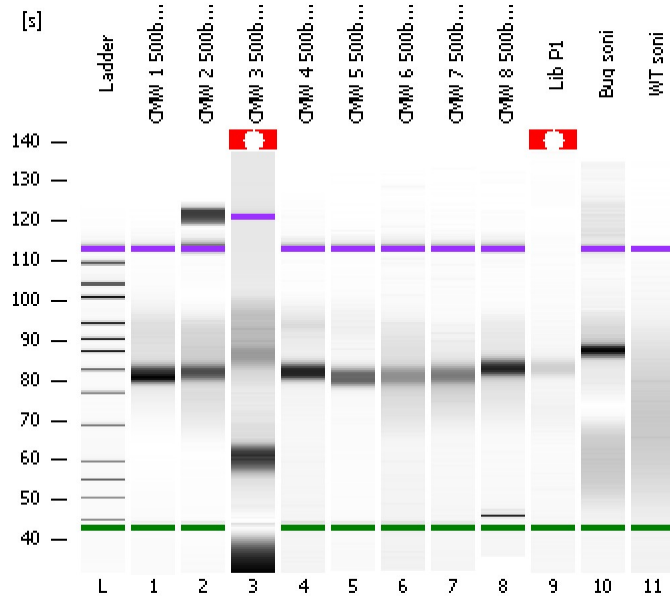


Assay Class: High Sensitivity DNA Assay
Data Path: C:\...ents and Settings\Bioanalyzer\2012-05-22\2012-05-22_001.xad

Created: 5/22/2012 10:20:37 AM
Modified: 5/22/2012 11:10:14 AM

Electrophoresis File Run Summary



Instrument Information:

Instrument Name: DE13701086 Firmware: C.01.069
Serial#: DE13701086 Type: G2938B

Assay Information:

Assay Origin Path: C:\Program Files\Agilent\2100 bioanalyzer\2100 expert\assays\dsDNA\High Sensitivity DNA.xsy
Assay Class: High Sensitivity DNA Assay
Version: 1.03
Assay Comments: Copyright © 2003-2010 Agilent Technologies

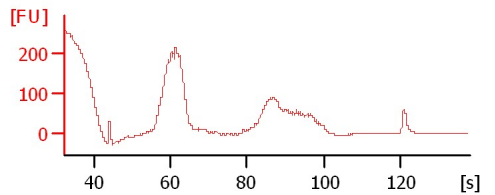
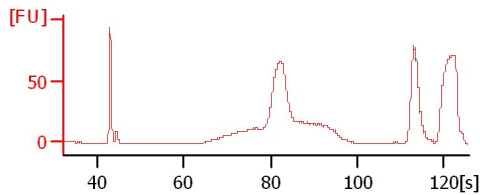
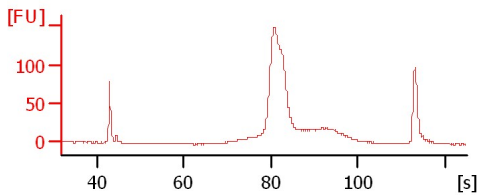
Chip Information:

Chip Lot #:
Reagent Kit Lot #:
Chip Comments:

CMW 1 500bp Lib

CMW 2 500bp Lib

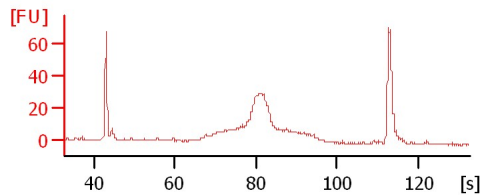
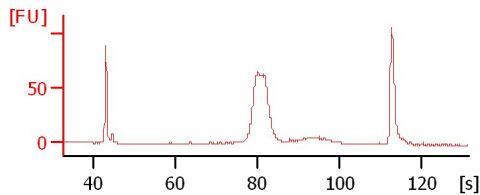
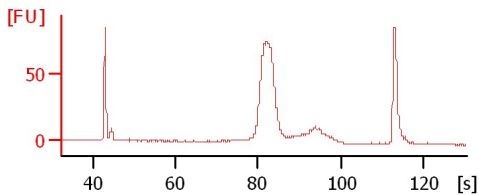
CMW 3 500bp Lib



CMW 4 500bp Lib

CMW 5 500bp Lib

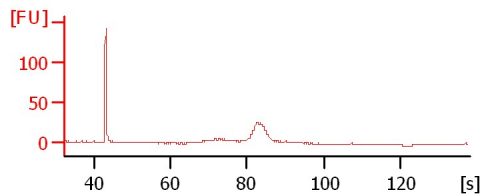
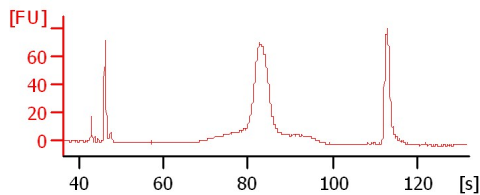
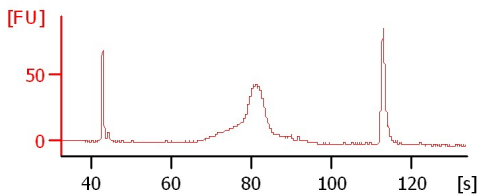
CMW 6 500bp Lib



CMW 7 500bp Lib

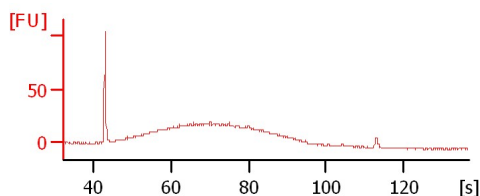
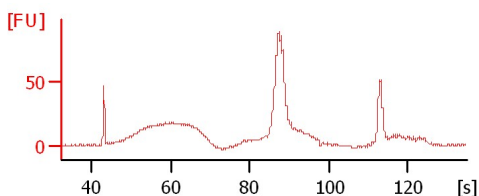
CMW 8 500bp Lib

Lib P1



Bug soni

WT soni



Assay Class: High Sensitivity DNA Assay
 Data Path: C:\...ents and Settings\Bioanalyzer\2012-05-22\2012-05-22_001.xad

Created: 5/22/2012 10:20:37 AM
 Modified: 5/22/2012 11:10:14 AM

Electrophoresis File Run Summary (Chip Summary)

Sample Name	Sample Comment	Rest. Digest	Status	Observation	Result Label	Result Color
CMW 1 500bp Lib		<input type="checkbox"/>	✓			
CMW 2 500bp Lib		<input type="checkbox"/>	✓			
CMW 3 500bp Lib		<input type="checkbox"/>	✓			
CMW 4 500bp Lib		<input type="checkbox"/>	✓			
CMW 5 500bp Lib		<input type="checkbox"/>	✓			
CMW 6 500bp Lib		<input type="checkbox"/>	✓			
CMW 7 500bp Lib		<input type="checkbox"/>	✓			
CMW 8 500bp Lib		<input type="checkbox"/>	✓			
Lib P1		<input type="checkbox"/>	✓			
Bug soni		<input type="checkbox"/>	✓			
WT soni		<input type="checkbox"/>	✓			
Ladder		<input type="checkbox"/>	✓			

Chip Lot #

Reagent Kit Lot #

Chip Comments :

Assay Class: High Sensitivity DNA Assay
Data Path: C:\...ents and Settings\Bioanalyzer\2012-05-22\2012-05-22_001.xad

Created: 5/22/2012 10:20:37 AM
Modified: 5/22/2012 11:10:14 AM

Electrophoresis Assay Details

General Analysis Settings

Number of Available Sample and Ladder Wells (Max.) : 12
Minimum Visible Range [s] : 32
Maximum Visible Range [s] : 138
Start Analysis Time Range [s] : 33
End Analysis Time Range [s] : 137.5
Ladder Concentration [pg/μl] : 1950
Uses Standard Area for Ladder Fragments
Lower Marker Concentration [pg/μl] : 125
Upper Marker Concentration [pg/μl] : 75
Used Upper Marker for Quantitation
Standard Curve Fit is Point to Point
Show Data Aligned to Lower and Upper Marker

Integrator Settings

Integration Start Time [s] : 33.05
Integration End Time [s] : 137
Slope Threshold : 0.8
Height Threshold [FU] : 5
Area Threshold : 0.1
Width Threshold [s] : 0.6
Baseline Plateau [s] : 0.5

Filter Settings

Filter Width [s] : 0.5
Polynomial Order : 4

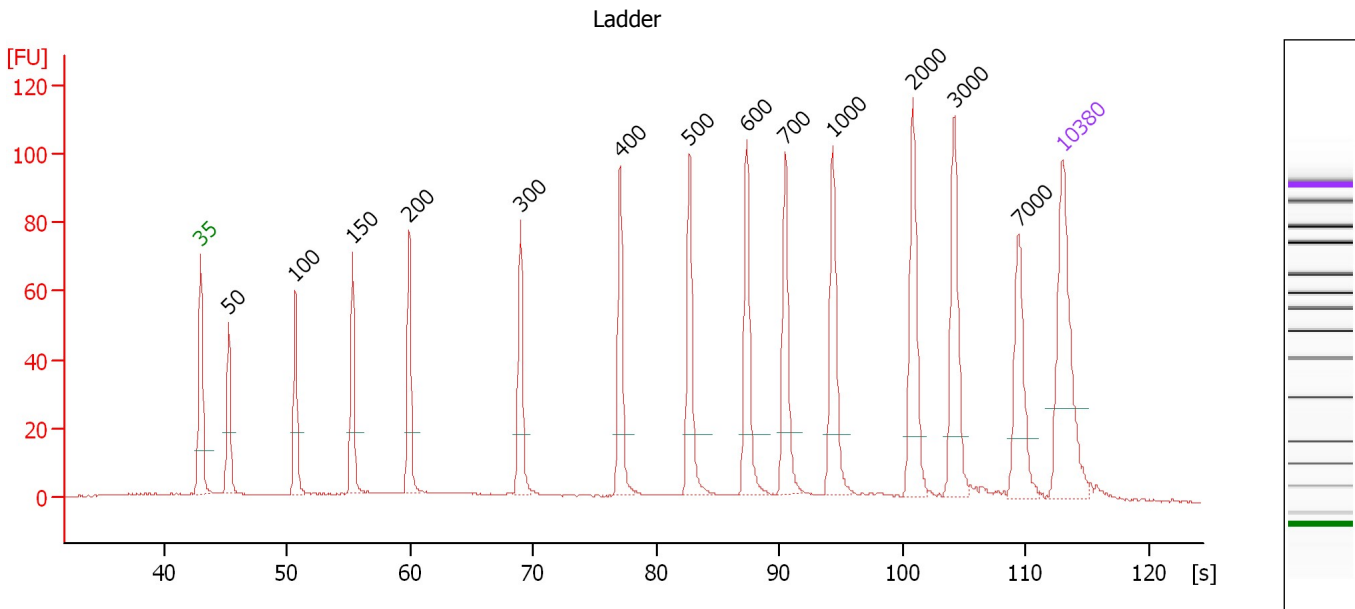
Ladder

Ladder Peak	Size	Area
1	35	160
2	50	210
3	100	208
4	150	221
5	200	242
6	300	270
7	400	305
8	500	306
9	600	336
10	700	321
11	1000	366
12	2000	413
13	3000	411
14	7000	400
15	10380	214

Assay Class: High Sensitivity DNA Assay
 Data Path: C:\...ents and Settings\Bioanalyzer\2012-05-22\2012-05-22_001.xad

Created: 5/22/2012 10:20:37 AM
 Modified: 5/22/2012 11:10:14 AM

Electropherogram Summary



Overall Results for Ladder

Noise: 0.1

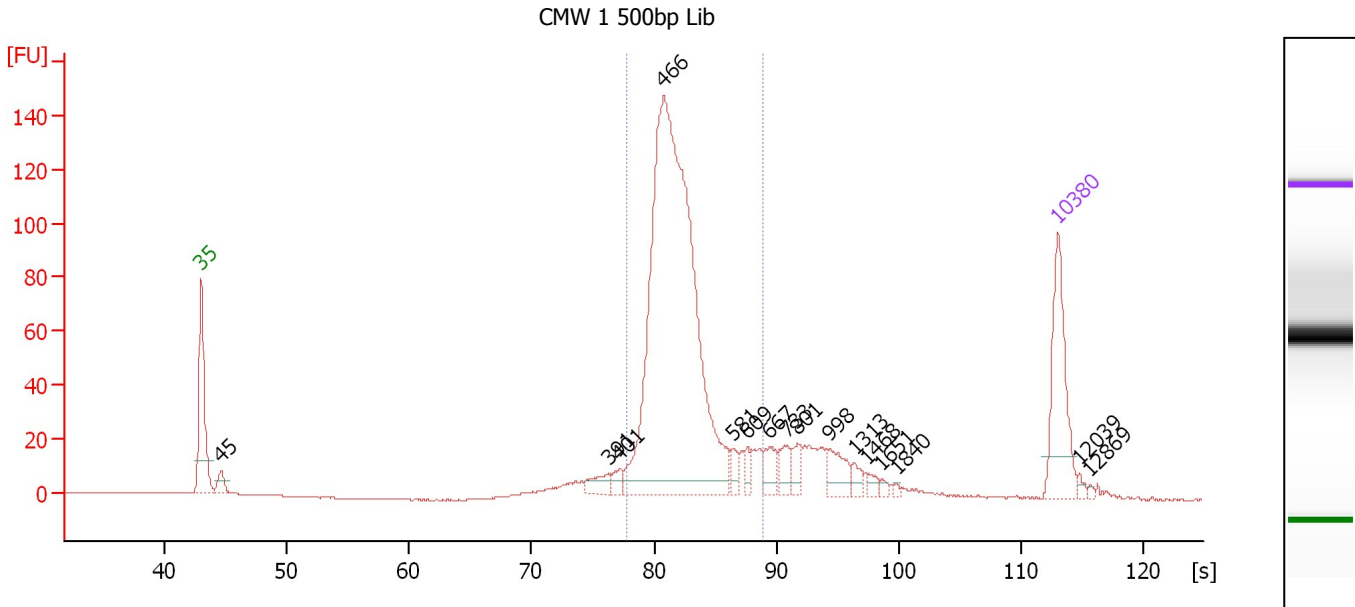
Peak table for Ladder

Peak	Size [bp]	Conc. [pg/μl]	Molarity [pmol/l]	Observations
1	35	125.00	5,411.3	Lower Marker
2	50	150.00	4,545.5	Ladder Peak
3	100	150.00	2,272.7	Ladder Peak
4	150	150.00	1,515.2	Ladder Peak
5	200	150.00	1,136.4	Ladder Peak
6	300	150.00	757.6	Ladder Peak
7	400	150.00	568.2	Ladder Peak
8	500	150.00	454.5	Ladder Peak
9	600	150.00	378.8	Ladder Peak
10	700	150.00	324.7	Ladder Peak
11	1,000	150.00	227.3	Ladder Peak
12	2,000	150.00	113.6	Ladder Peak
13	3,000	150.00	75.8	Ladder Peak
14	7,000	150.00	32.5	Ladder Peak
15	10,380	75.00	10.9	Upper Marker

Assay Class: High Sensitivity DNA Assay
 Data Path: C:\...ents and Settings\Bioanalyzer\2012-05-22\2012-05-22_001.xad

Created: 5/22/2012 10:20:37 AM
 Modified: 5/22/2012 11:10:14 AM

Electropherogram Summary Continued ...



Overall Results for sample 1 : CMW 1 500bp Lib

Number of peaks found: 16 Corr. Area 1: 827.1
 Noise: 0.1

Peak table for sample 1 : CMW 1 500bp Lib

Peak	Size [bp]	Conc. [pg/μl]	Molarity [pmol/l]	Observations
1	35	125.00	5,411.3	Lower Marker
2	45	18.36	612.0	
3	391	18.01	69.8	
4	401	10.20	38.5	
5	466	735.48	2,390.3	
6	581	11.51	30.0	
7	609	9.82	24.4	
8	667	18.64	42.3	
9	733	18.25	37.7	
10	801	14.86	28.1	
11	998	24.89	37.8	
12	1,313	9.24	10.7	
13	1,468	6.43	6.6	
14	1,651	3.67	3.4	
15	1,840	1.95	1.6	
16	10,380	75.00	10.9	Upper Marker
17	12,039	0.00	0.0	
18	12,869	0.00	0.0	

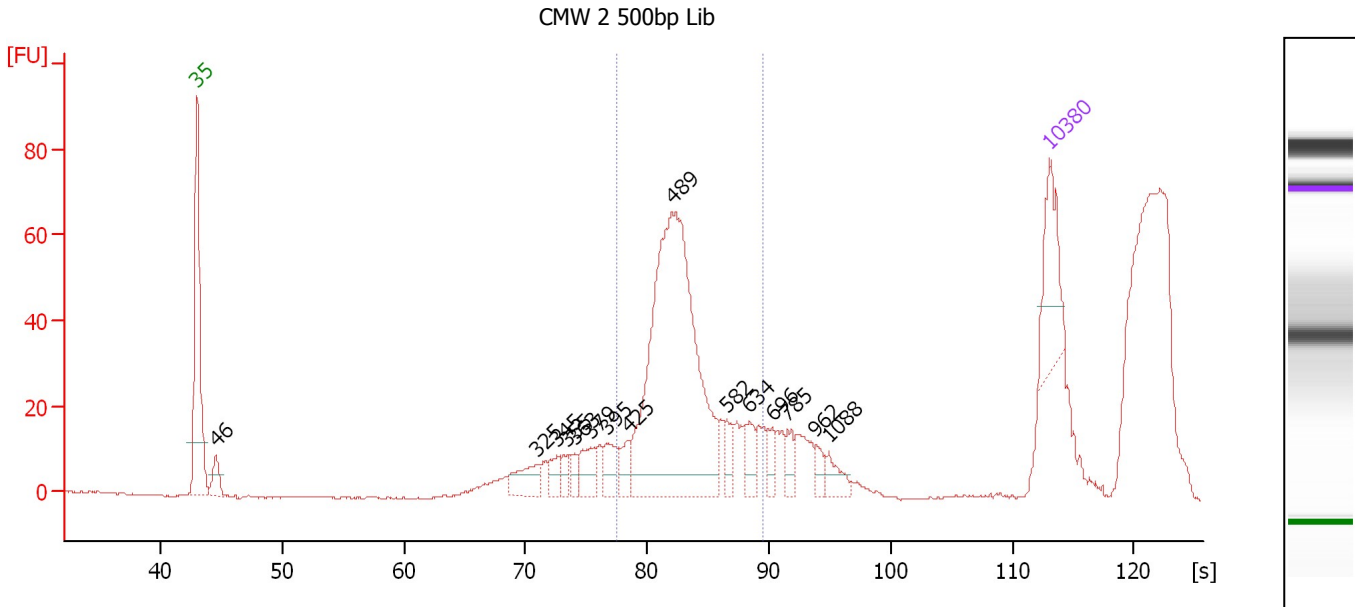
Region table for sample 1 : CMW 1 500bp Lib

From [bp]	To [bp]	Average Size [bp]	Molarity [pmol/l]	Conc. [pg/μl]	Corr. Area	% of Total	Size distribution in CV [%]	Color
414	648	492	2,390.9	769.61	827.1	76	9.0	Blue

Assay Class: High Sensitivity DNA Assay
 Data Path: C:\...ents and Settings\Bioanalyzer\2012-05-22\2012-05-22_001.xad

Created: 5/22/2012 10:20:37 AM
 Modified: 5/22/2012 11:10:14 AM

Electropherogram Summary Continued ...



Overall Results for sample 2 : CMW 2 500bp Lib

Number of peaks found: 15 Corr. Area 1: 454.5
 Noise: 0.1

Peak table for sample 2 : CMW 2 500bp Lib

Peak	Size [bp]	Conc. [pg/μl]	Molarity [pmol/l]	Observations
1	35	125.00	5,411.3	Lower Marker
2	46	37.87	1,260.9	
3	325	46.48	216.7	
4	345	22.30	98.0	
5	355	17.74	75.7	
6	363	15.81	66.0	
7	379	38.56	154.0	
8	395	29.38	112.8	
9	425	23.99	85.6	
10	489	648.48	2,010.0	
11	582	25.44	66.2	
12	634	28.38	67.8	
13	696	19.97	43.5	
14	785	21.50	41.5	
15	962	15.14	23.8	
16	1,088	21.89	30.5	
17	10,380	75.00	10.9	Upper Marker

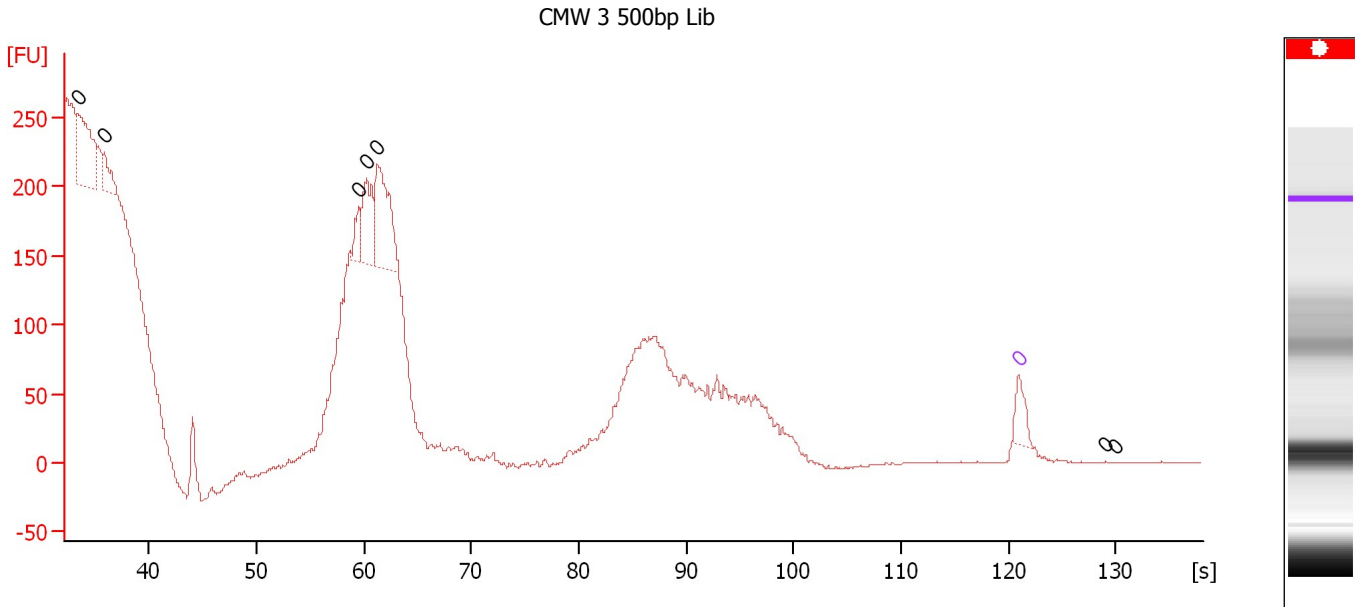
Region table for sample 2 : CMW 2 500bp Lib

From [bp]	To [bp]	Average Size [bp]	Molarity [pmol/l]	Conc. [pg/μl]	Corr. Area	% of Total	Size distribution in CV [%]	Color
409	669	511	2,360.2	784.33	454.5	47	11.1	Blue

Assay Class: High Sensitivity DNA Assay
 Data Path: C:\...ents and Settings\Bioanalyzer\2012-05-22\2012-05-22_001.xad

Created: 5/22/2012 10:20:37 AM
 Modified: 5/22/2012 11:10:14 AM

Electropherogram Summary Continued ...



Setpoint Deviations for sample 3 : CMW 3 500bp Lib

Height Threshold [FU] : -1

Overall Results for sample 3 : CMW 3 500bp Lib

Number of peaks found: 0 Noise: 0.4

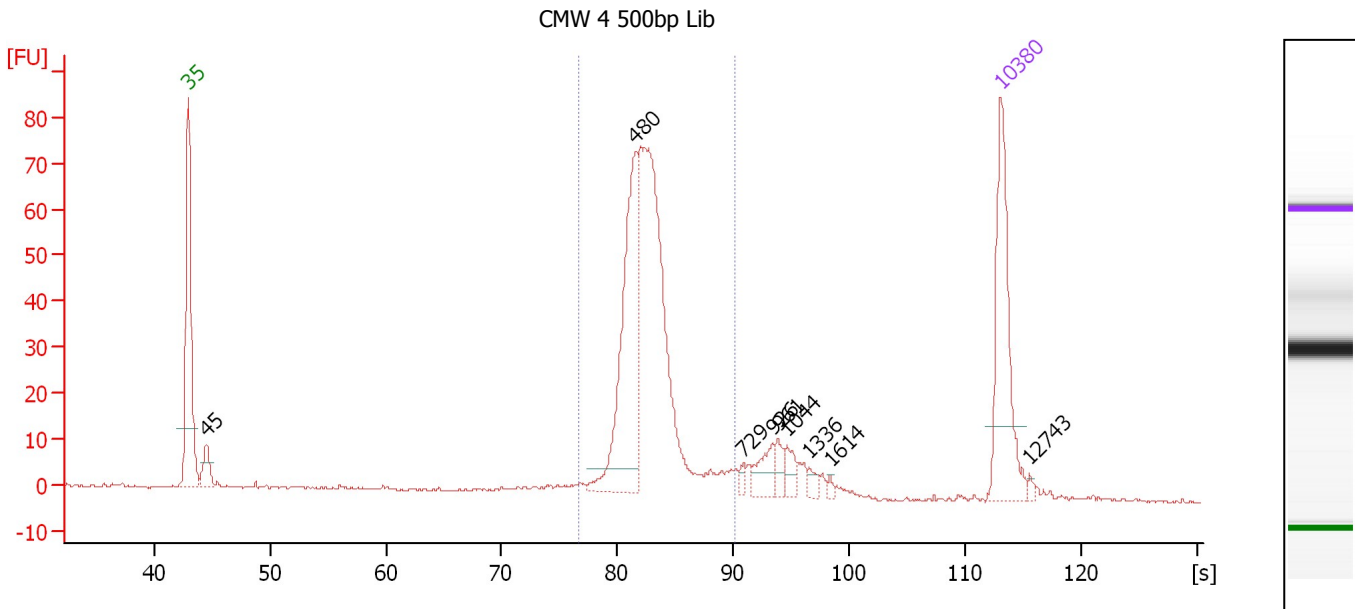
Peak table for sample 3 : CMW 3 500bp Lib

Peak	Size [bp]	Conc. [pg/μl]	Molarity [pmol/l]	Observations
1	0	0.00	0.0	
2	0	0.00	0.0	
3	0	0.00	0.0	
4	0	0.00	0.0	
5	0	0.00	0.0	
6	0	0.00	0.0	Upper Marker
7	0	0.00	0.0	
8	0	0.00	0.0	

Assay Class: High Sensitivity DNA Assay
 Data Path: C:\...ents and Settings\Bioanalyzer\2012-05-22\2012-05-22_001.xad

Created: 5/22/2012 10:20:37 AM
 Modified: 5/22/2012 11:10:14 AM

Electropherogram Summary Continued ...



Overall Results for sample 4 : CMW 4 500bp Lib

Number of peaks found: 9 Corr. Area 1: 404.2
 Noise: 0.2

Peak table for sample 4 : CMW 4 500bp Lib

Peak	Size [bp]	Conc. [pg/μl]	Molarity [pmol/l]	Observations
1	35	125.00	5,411.3	Lower Marker
2	45	23.12	776.7	
3	480	150.84	476.1	
4	729	4.67	9.7	
5	926	16.93	27.7	
6	961	8.82	13.9	
7	1,044	9.93	14.4	
8	1,336	4.93	5.6	
9	1,614	2.12	2.0	
10	10,380	75.00	10.9	Upper Marker
11	12,743	0.00	0.0	

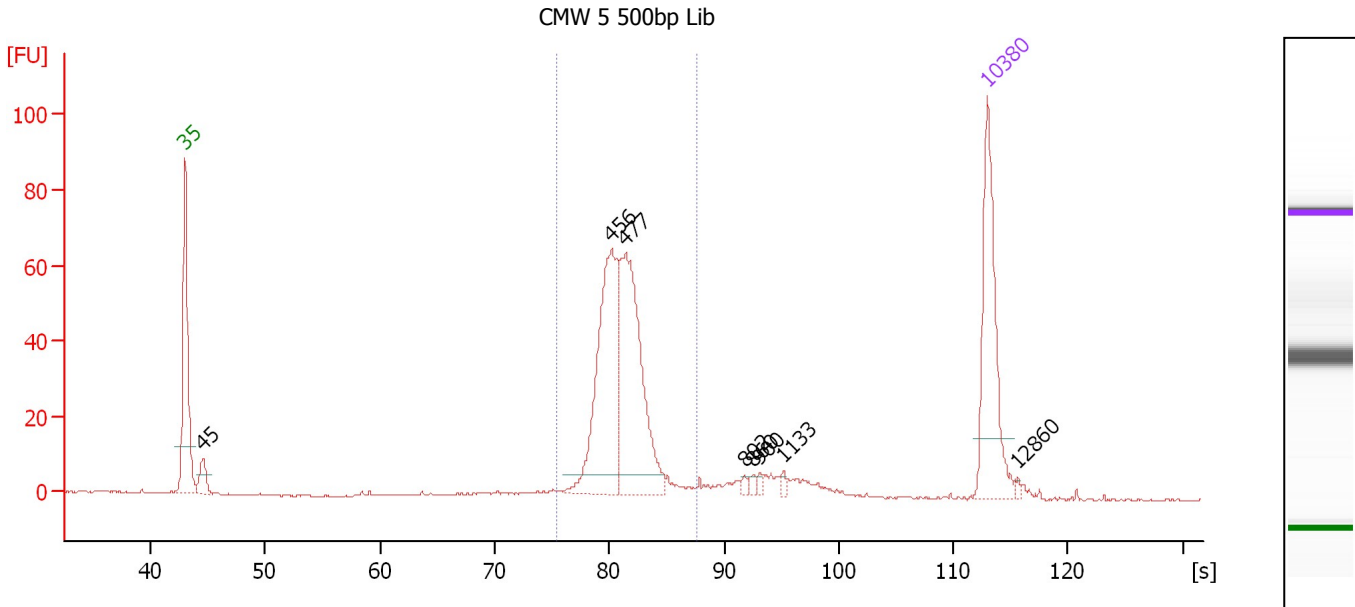
Region table for sample 4 : CMW 4 500bp Lib

From [bp]	To [bp]	Average Size [bp]	Molarity [pmol/l]	Conc. [pg/μl]	Corr. Area	% of Total	Size distribution in CV [%]	Color
395	687	501	1,292.5	424.21	404.2	76	8.6	Blue

Assay Class: High Sensitivity DNA Assay
 Data Path: C:\...ents and Settings\Bioanalyzer\2012-05-22\2012-05-22_001.xad

Created: 5/22/2012 10:20:37 AM
 Modified: 5/22/2012 11:10:14 AM

Electropherogram Summary Continued ...



Overall Results for sample 5 : CMW 5 500bp Lib

Number of peaks found: 8 Corr. Area 1: 370.0
 Noise: 0.2

Peak table for sample 5 : CMW 5 500bp Lib

Peak	Size [bp]	Conc. [pg/μl]	Molarity [pmol/l]	Observations
1	35	125.00	5,411.3	Lower Marker
2	45	19.57	655.6	
3	456	157.17	522.4	
4	477	154.46	490.2	
5	802	2.61	4.9	
6	860	2.91	5.1	
7	900	2.95	5.0	
8	1,133	2.56	3.4	
9	10,380	75.00	10.9	Upper Marker
10	12,860	0.00	0.0	

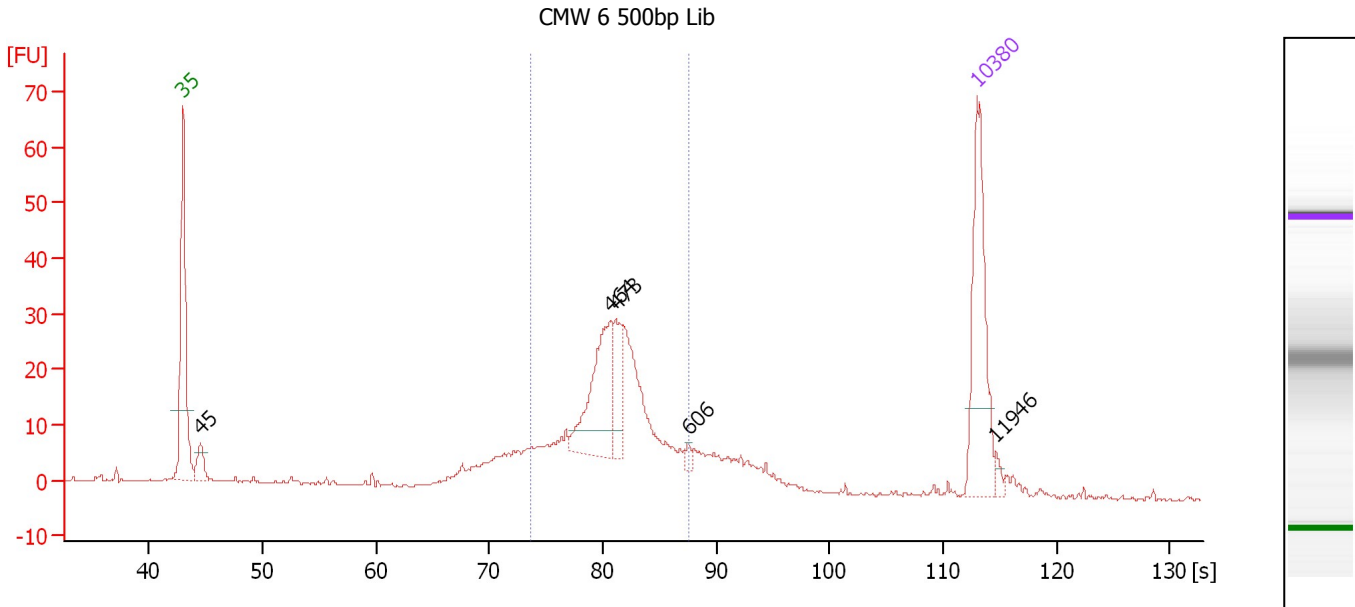
Region table for sample 5 : CMW 5 500bp Lib

From [bp]	To [bp]	Average Size [bp]	Molarity [pmol/l]	Conc. [pg/μl]	Corr. Area	% of Total	Size distribution in CV [%]	Color
380	611	472	1,050.7	325.76	370.0	80	7.1	Blue

Assay Class: High Sensitivity DNA Assay
 Data Path: C:\...ents and Settings\Bioanalyzer\2012-05-22\2012-05-22_001.xad

Created: 5/22/2012 10:20:37 AM
 Modified: 5/22/2012 11:10:14 AM

Electropherogram Summary Continued ...



Overall Results for sample 6 : CMW 6 500bp Lib

Number of peaks found: 5 Corr. Area 1: 262.8
 Noise: 0.2

Peak table for sample 6 : CMW 6 500bp Lib

Peak	Size [bp]	Conc. [pg/μl]	Molarity [pmol/l]	Observations
1	35	125.00	5,411.3	Lower Marker
2	45	21.00	701.9	
3	464	87.39	285.2	
4	473	30.27	97.0	
5	606	3.53	8.8	
6	10,380	75.00	10.9	Upper Marker
7	11,946	0.00	0.0	

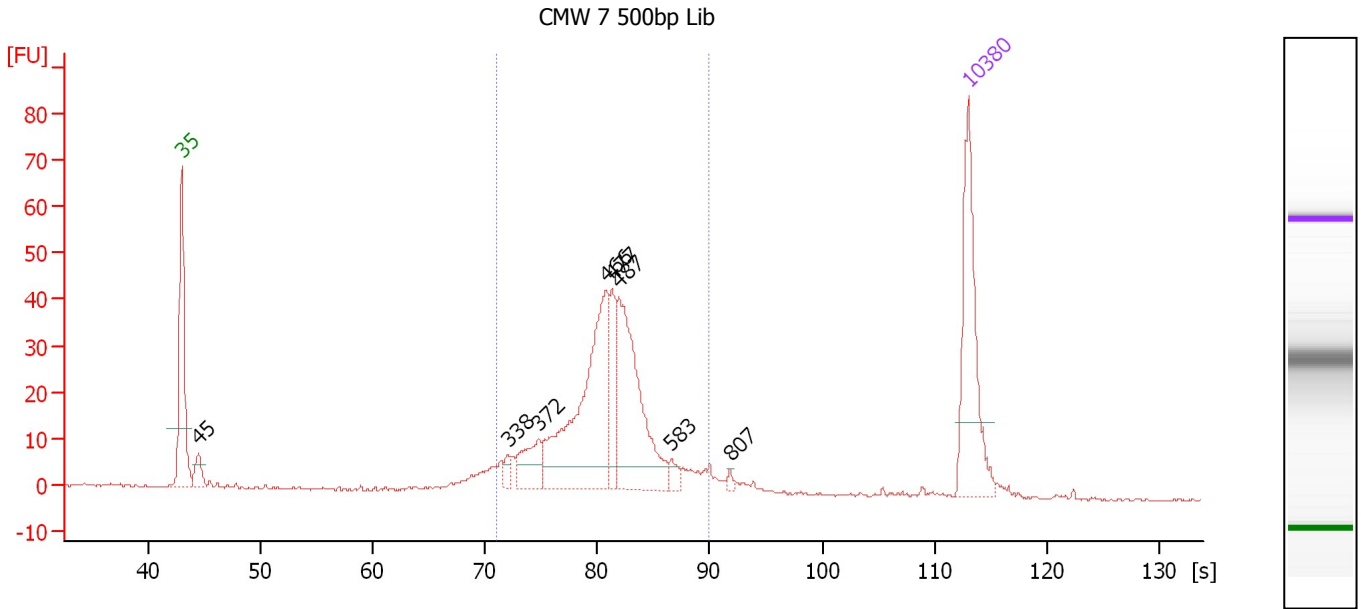
Region table for sample 6 : CMW 6 500bp Lib

From [bp]	To [bp]	Average Size [bp]	Molarity [pmol/l]	Conc. [pg/μl]	Corr. Area	% of Total	Size distribution in CV [%]	Color
359	607	469	1,105.7	336.65	262.8	66	11.9	Blue

Assay Class: High Sensitivity DNA Assay
 Data Path: C:\...ents and Settings\Bioanalyzer\2012-05-22\2012-05-22_001.xad

Created: 5/22/2012 10:20:37 AM
 Modified: 5/22/2012 11:10:14 AM

Electropherogram Summary Continued ...



Overall Results for sample 7 : CMW 7 500bp Lib

Number of peaks found: 8 Corr. Area 1: 396.2
 Noise: 0.3

Peak table for sample 7 : CMW 7 500bp Lib

Peak	Size [bp]	Conc. [pg/µl]	Molarity [pmol/l]	Observations
1	35	125.00	5,411.3	Lower Marker
2	45	18.93	635.9	
3	338	6.82	30.5	
4	372	30.17	122.8	
5	466	172.37	560.0	
6	477	35.30	112.2	
7	487	131.68	409.9	
8	583	7.11	18.5	
9	807	2.87	5.4	
10	10,380	75.00	10.9	Upper Marker

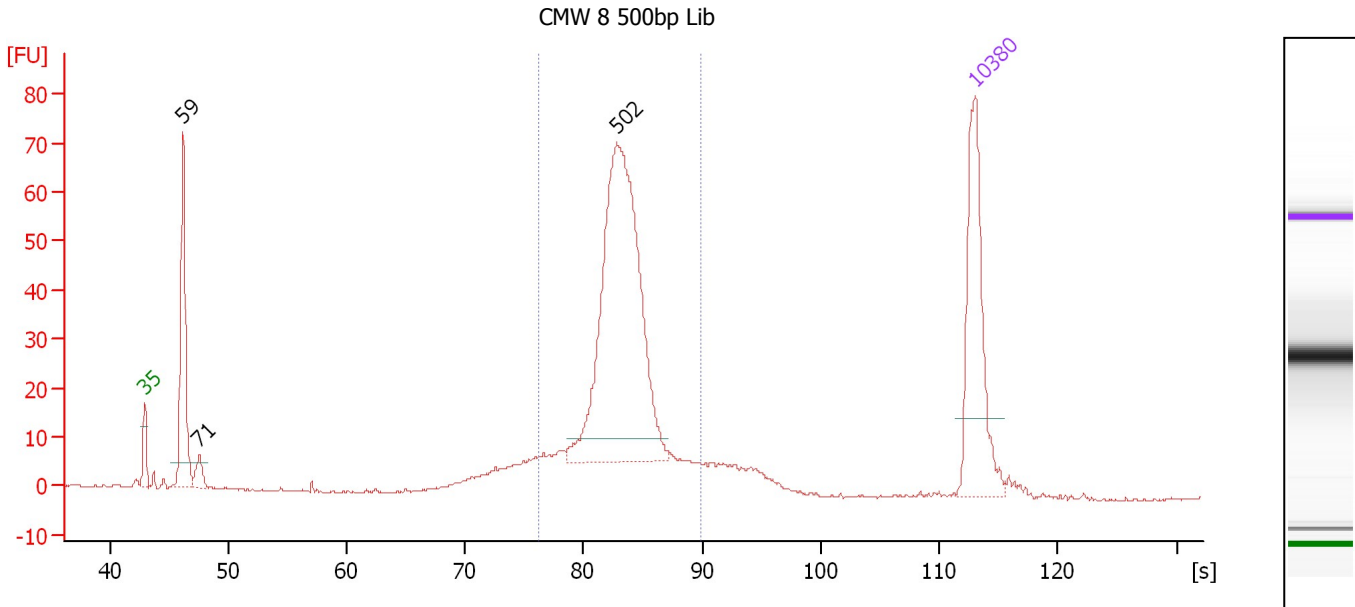
Region table for sample 7 : CMW 7 500bp Lib

From [bp]	To [bp]	Average Size [bp]	Molarity [pmol/l]	Conc. [pg/µl]	Corr. Area	% of Total	Size distribution in CV [%]	Color
326	681	466	1,427.8	426.68	396.2	85	14.6	Blue

Assay Class: High Sensitivity DNA Assay
 Data Path: C:\...ents and Settings\Bioanalyzer\2012-05-22\2012-05-22_001.xad

Created: 5/22/2012 10:20:37 AM
 Modified: 5/22/2012 11:10:14 AM

Electropherogram Summary Continued ...



Overall Results for sample 8 : CMW 8 500bp Lib

Number of peaks found: 3 Corr. Area 1: 439.5
 Noise: 0.2

Peak table for sample 8 : CMW 8 500bp Lib

Peak	Size [bp]	Conc. [pg/μl]	Molarity [pmol/l]	Observations
1	35	125.00	5,411.3	Lower Marker
2	59	117.77	3,037.1	
3	71	14.09	299.4	
4	502	291.11	878.0	
5	10,380	75.00	10.9	Upper Marker

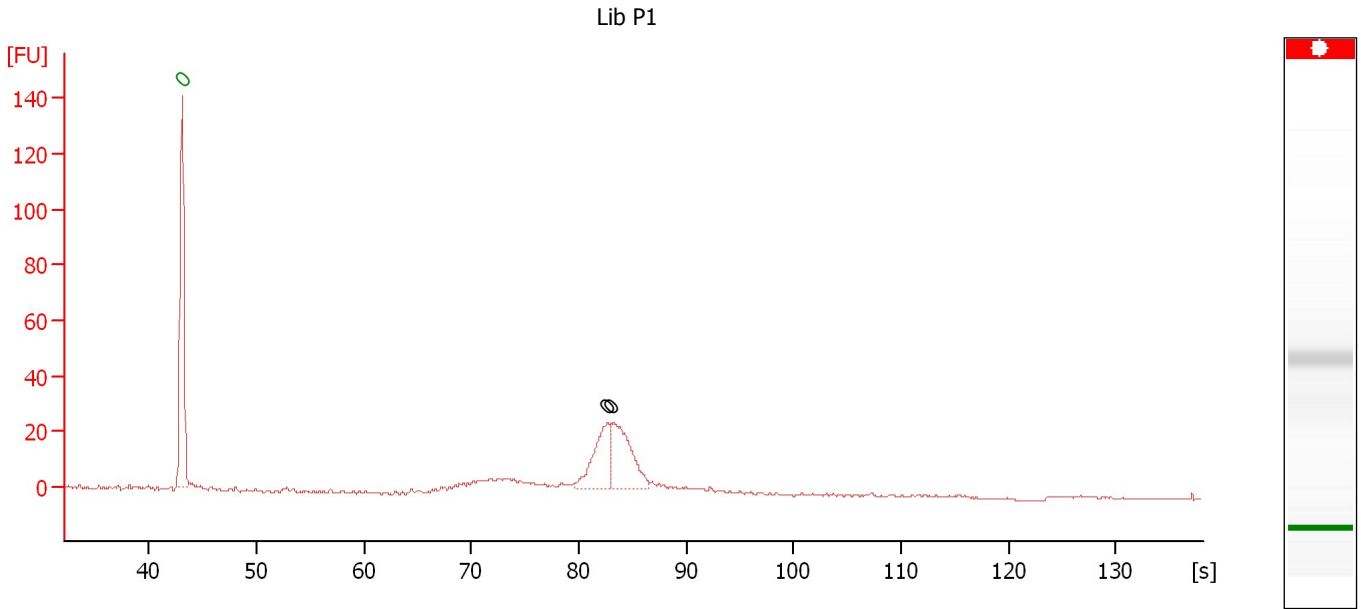
Region table for sample 8 : CMW 8 500bp Lib

From [bp]	To [bp]	Average Size [bp]	Molarity [pmol/l]	Conc. [pg/μl]	Corr. Area	% of Total	Size distribution in CV [%]	Color
389	684	511	1,165.1	388.84	439.5	70	9.9	Blue

Assay Class: High Sensitivity DNA Assay
Data Path: C:\...ents and Settings\Bioanalyzer\2012-05-22\2012-05-22_001.xad

Created: 5/22/2012 10:20:37 AM
Modified: 5/22/2012 11:10:14 AM

Electropherogram Summary Continued ...



Overall Results for sample 9 : Lib P1

Number of peaks found: 2 Noise: 0.1

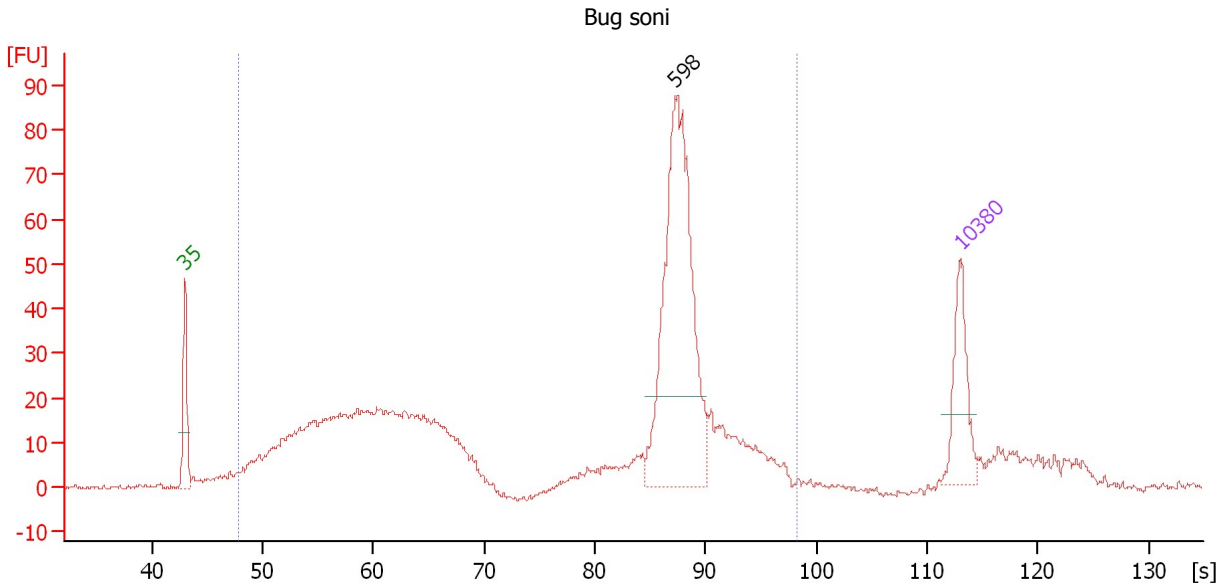
Peak table for sample 9 : Lib P1

Peak	Size [bp]	Conc. [pg/μl]	Molarity [pmol/l]	Observations
1	0	0.00	0.0	Lower Marker
2	0	0.00	0.0	
3	0	0.00	0.0	

Assay Class: High Sensitivity DNA Assay
 Data Path: C:\...ents and Settings\Bioanalyzer\2012-05-22\2012-05-22_001.xad

Created: 5/22/2012 10:20:37 AM
 Modified: 5/22/2012 11:10:14 AM

Electropherogram Summary Continued ...



Setpoint Deviations for sample 10 : Bug soni

Height Threshold [FU] : 20

Overall Results for sample 10 : Bug soni

Number of peaks found: 1 Corr. Area 1: 893.1
 Noise: 0.6

Peak table for sample 10 : Bug soni

Peak	Size [bp]	Conc. [pg/μl]	Molarity [pmol/l]	Observations
1	35	125.00	5,411.3	Lower Marker
2	598	456.91	1,158.5	
3	10,380	75.00	10.9	Upper Marker

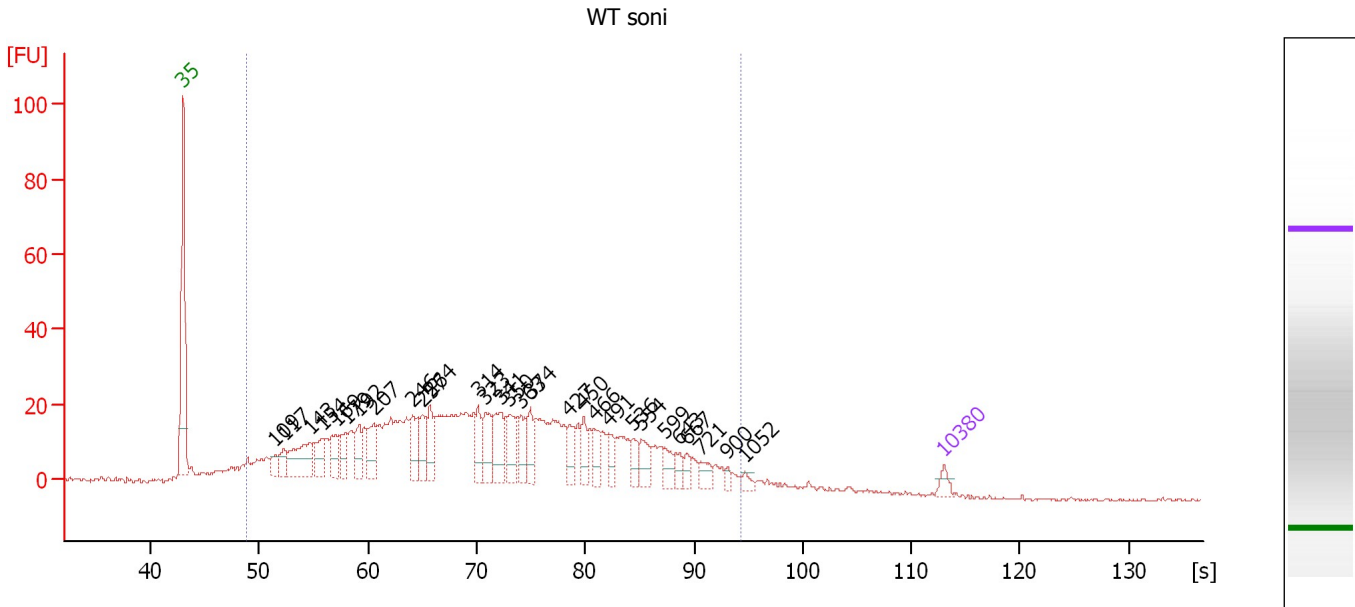
Region table for sample 10 : Bug soni

From [bp]	To [bp]	Average Size [bp]	Molarity [pmol/l]	Conc. [pg/μl]	Corr. Area	% of Total	Size distribution in CV [%]	Color
73	1,610	458	11,195.8	1,697.15	893.1	92	58.8	Blue

Assay Class: High Sensitivity DNA Assay
 Data Path: C:\...ents and Settings\Bioanalyzer\2012-05-22\2012-05-22_001.xad

Created: 5/22/2012 10:20:37 AM
 Modified: 5/22/2012 11:10:14 AM

Electropherogram Summary Continued ...



Overall Results for sample 11 : WT soni

Number of peaks found: 29 Corr. Area 1: 905.6
 Noise: 0.4

Peak table for sample 11 : WT soni

Peak	Size [bp]	Conc. [pg/μl]	Molarity [pmol/l]	Observations
1	35	125.00	5,411.3	Lower Marker
2	109	171.24	2,384.9	
3	117	201.47	2,603.2	
4	143	713.07	7,572.8	
5	154	326.48	3,203.9	
6	169	336.89	3,021.1	
7	179	281.81	2,389.8	
8	192	308.97	2,436.3	
9	207	398.82	2,921.8	
10	246	427.87	2,633.1	
11	257	331.36	1,956.6	
12	264	317.82	1,822.2	
13	314	312.80	1,507.3	
14	323	382.85	1,796.1	
15	341	476.36	2,119.0	
16	350	437.95	1,897.2	
17	363	305.11	1,275.1	
18	374	253.61	1,027.1	
19	427	198.07	703.2	
20	450	220.12	741.8	
21	466	181.91	591.1	
22	491	164.45	507.6	
23	536	163.48	462.5	
24	554	231.50	633.6	
25	599	150.43	380.4	
26	643	123.10	289.9	

Assay Class: High Sensitivity DNA Assay
 Data Path: C:\...ents and Settings\Bioanalyzer\2012-05-22\2012-05-22_001.xad


Created: 5/22/2012 10:20:37 AM
 Modified: 5/22/2012 11:10:14 AM

Electropherogram Summary Continued ...

... Peak table for sample 11 : WT soni

Peak	Size [bp]	Conc. [pg/μl]	Molarity [pmol/l]	Observations
27	667	98.80	224.4	
28	721	137.33	288.7	
29	900	50.93	85.7	
30	1,052	59.44	85.6	
31	10,380	75.00	10.9	Upper Marker

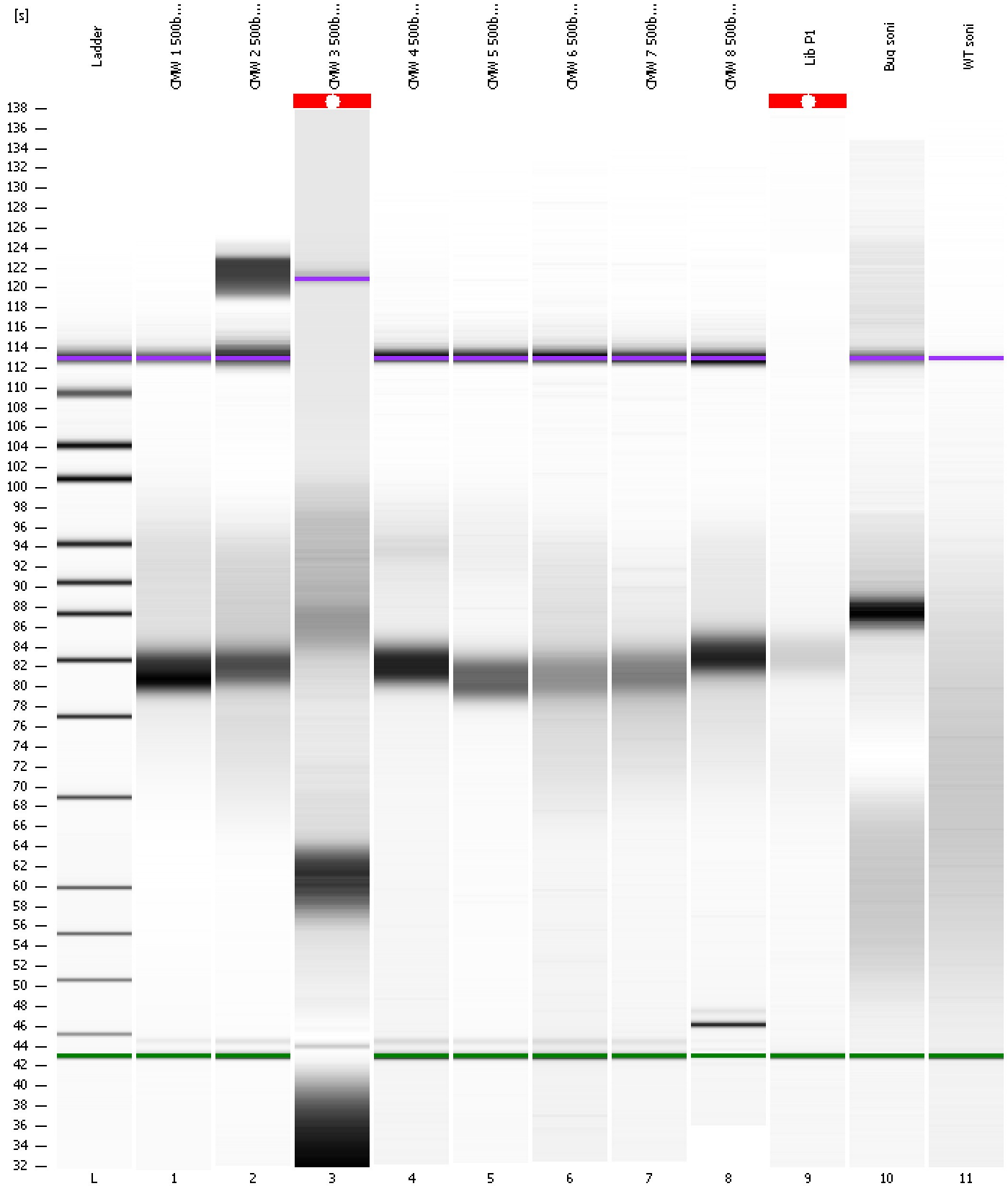
Region table for sample 11 : WT soni

From [bp]	To [bp]	Average Size [bp]	Molarity [pmol/l]	Conc. [pg/μl]	Corr. Area	% of Total	Size distribution in CV [%]	Color
83	1,000	354	99,334.7	15,934.26	905.6	94	47.8	

Assay Class: High Sensitivity DNA Assay
Data Path: C:\...ents and Settings\Bioanalyzer\2012-05-22\2012-05-22_001.xad

Created: 5/22/2012 10:20:37 AM
Modified: 5/22/2012 11:10:14 AM

Gel Image



Assay Class: High Sensitivity DNA Assay
 Data Path: C:\...ents and Settings\Bioanalyzer\2012-05-22\2012-05-22_001.xad

Created: 5/22/2012 10:20:37 AM
 Modified: 5/22/2012 11:10:14 AM

Run Logbook

Description	Number	Source	Category	Sub Category	Time	Time Zone	User	Host
Run ended on port 1 (Number of wells acquired: 12)		Instrument	Run		5/22/2012 11:01:53 AM	(GMT --07:00) Pacific Standard Time	UC Davis	D8XSMGH1
Run started on port 1 (File: C:\Documents and Settings\Bioanalyzer\2012-05-22\2012-05-22_001.xad)		Instrument	Run		5/22/2012 10:20:37 AM	(GMT --07:00) Pacific Standard Time	UC Davis	D8XSMGH1
Product Number : G2938B		Instrument	Run		5/22/2012 10:20:37 AM	(GMT --07:00) Pacific Standard Time	UC Davis	D8XSMGH1
Name :		Instrument	Run		5/22/2012 10:20:37 AM	(GMT --07:00) Pacific Standard Time	UC Davis	D8XSMGH1
Vendor : Agilent Technologies		Instrument	Run		5/22/2012 10:20:37 AM	(GMT --07:00) Pacific Standard Time	UC Davis	D8XSMGH1
Serial# : DE13701086		Instrument	Run		5/22/2012 10:20:37 AM	(GMT --07:00) Pacific Standard Time	UC Davis	D8XSMGH1
Firmware : C.01.069		Instrument	Run		5/22/2012 10:20:37 AM	(GMT --07:00) Pacific Standard Time	UC Davis	D8XSMGH1
Cartridge : Electrode		Instrument	Run		5/22/2012 10:20:37 AM	(GMT --07:00) Pacific Standard Time	UC Davis	D8XSMGH1