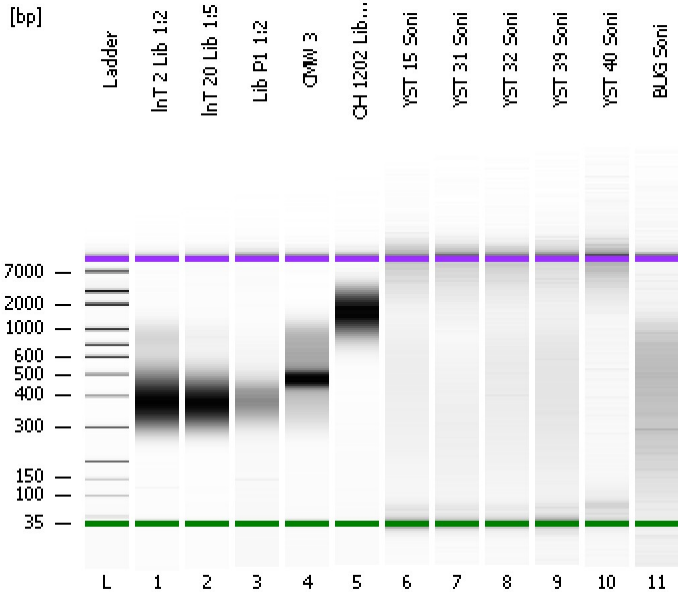


Assay Class: High Sensitivity DNA Assay
Data Path: C:\...ents and Settings\Bioanalyzer\2012-05-22\2012-05-22_003.xad

Created: 5/22/2012 2:40:55 PM
Modified: 5/22/2012 3:28:27 PM

Electrophoresis File Run Summary



Instrument Information:

Instrument Name: DE13701086 Firmware: C.01.069
Serial#: DE13701086 Type: G2938B

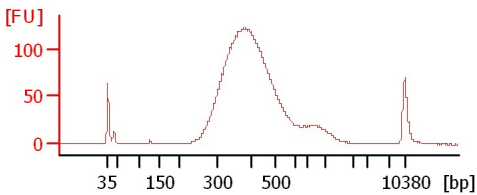
Assay Information:

Assay Origin Path: C:\Program Files\Agilent\2100 bioanalyzer\2100 expert\assays\dsDNA\High Sensitivity DNA.xsy
Assay Class: High Sensitivity DNA Assay
Version: 1.03
Assay Comments: Copyright © 2003-2010 Agilent Technologies

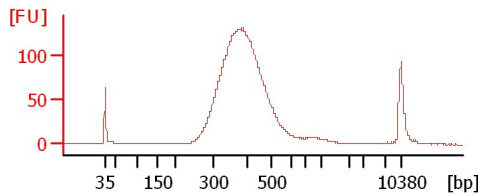
Chip Information:

Chip Lot #:
Reagent Kit Lot #:
Chip Comments:

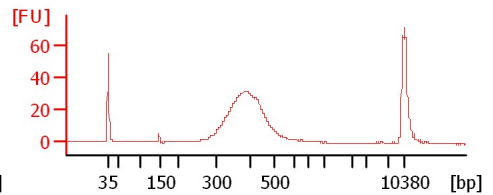
InT 2 Lib 1:2



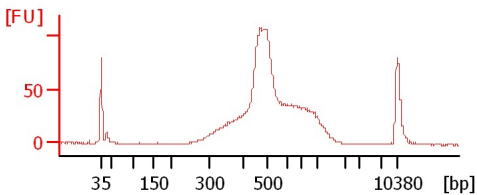
InT 20 Lib 1:5



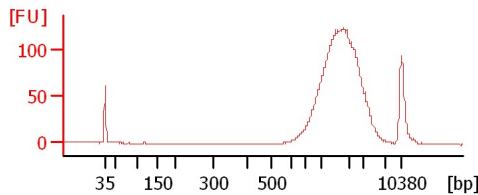
Lib P1 1:2



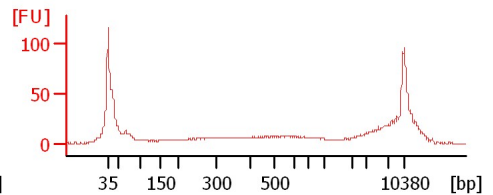
CMW 3



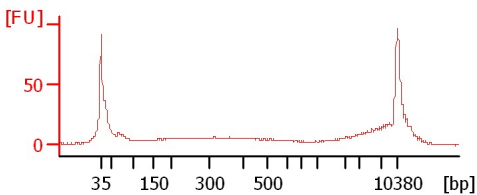
OH 1202 Lib 1:5



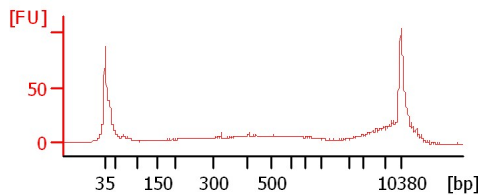
YST 15 Soni



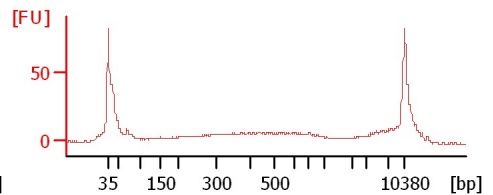
YST 31 Soni



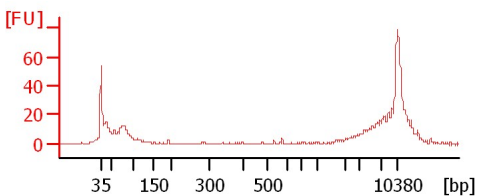
YST 32 Soni



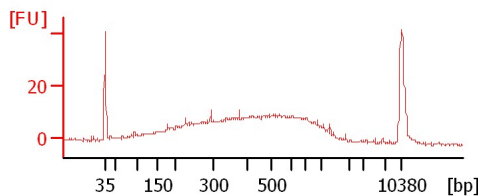
YST 39 Soni



YST 40 Soni



BUG Soni



Assay Class: High Sensitivity DNA Assay
Data Path: C:\...ents and Settings\Bioanalyzer\2012-05-22\2012-05-22_003.xad

Created: 5/22/2012 2:40:55 PM
Modified: 5/22/2012 3:28:27 PM

Electrophoresis File Run Summary (Chip Summary)

Sample Name	Sample Comment	Rest. Digest	Status	Observation	Result Label	Result Color
InT 2 Lib 1:2		<input type="checkbox"/>	✓			
InT 20 Lib 1:5		<input type="checkbox"/>	✓			
Lib P1 1:2		<input type="checkbox"/>	✓			
CMW 3		<input type="checkbox"/>	✓			
OH 1202 Lib 1:5		<input type="checkbox"/>	✓			
YST 15 Soni		<input type="checkbox"/>	✓			
YST 31 Soni		<input type="checkbox"/>	✓			
YST 32 Soni		<input type="checkbox"/>	✓			
YST 39 Soni		<input type="checkbox"/>	✓			
YST 40 Soni		<input type="checkbox"/>	✓			
BUG Soni		<input type="checkbox"/>	✓			
Ladder		<input type="checkbox"/>	✓			

Chip Lot #

Reagent Kit Lot #

Chip Comments :

Assay Class: High Sensitivity DNA Assay
Data Path: C:\...ents and Settings\Bioanalyzer\2012-05-22\2012-05-22_003.xad

Created: 5/22/2012 2:40:55 PM
Modified: 5/22/2012 3:28:27 PM

Electrophoresis Assay Details

General Analysis Settings

Number of Available Sample and Ladder Wells (Max.) : 12
Minimum Visible Range [s] : 32
Maximum Visible Range [s] : 138
Start Analysis Time Range [s] : 33
End Analysis Time Range [s] : 137.5
Ladder Concentration [pg/μl] : 1950
Uses Standard Area for Ladder Fragments
Lower Marker Concentration [pg/μl] : 125
Upper Marker Concentration [pg/μl] : 75
Used Upper Marker for Quantitation
Standard Curve Fit is Point to Point
Show Data Aligned to Lower and Upper Marker

Integrator Settings

Integration Start Time [s] : 33.05
Integration End Time [s] : 137
Slope Threshold : 0.8
Height Threshold [FU] : 5
Area Threshold : 0.1
Width Threshold [s] : 0.6
Baseline Plateau [s] : 0.5

Filter Settings

Filter Width [s] : 0.5
Polynomial Order : 4

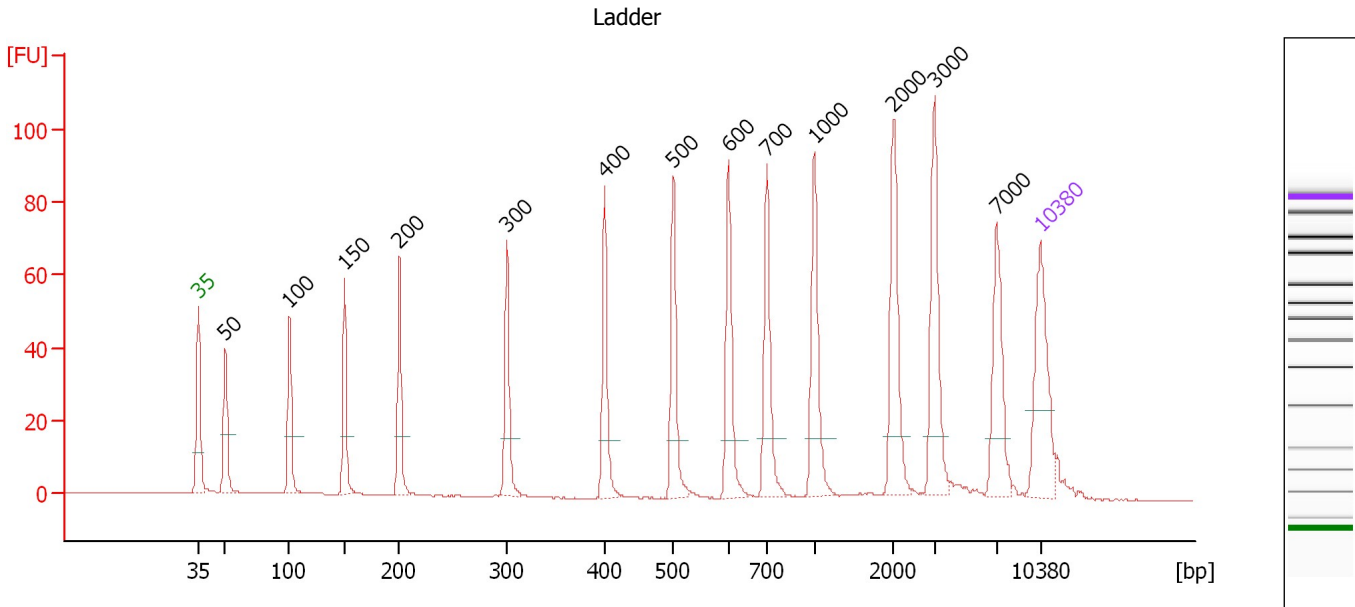
Ladder

Ladder Peak	Size	Area
1	35	160
2	50	210
3	100	208
4	150	221
5	200	242
6	300	270
7	400	305
8	500	306
9	600	336
10	700	321
11	1000	366
12	2000	413
13	3000	411
14	7000	400
15	10380	214

Assay Class: High Sensitivity DNA Assay
 Data Path: C:\...ents and Settings\Bioanalyzer\2012-05-22\2012-05-22_003.xad

Created: 5/22/2012 2:40:55 PM
 Modified: 5/22/2012 3:28:27 PM

Electropherogram Summary



Overall Results for Ladder

Noise: 0.2

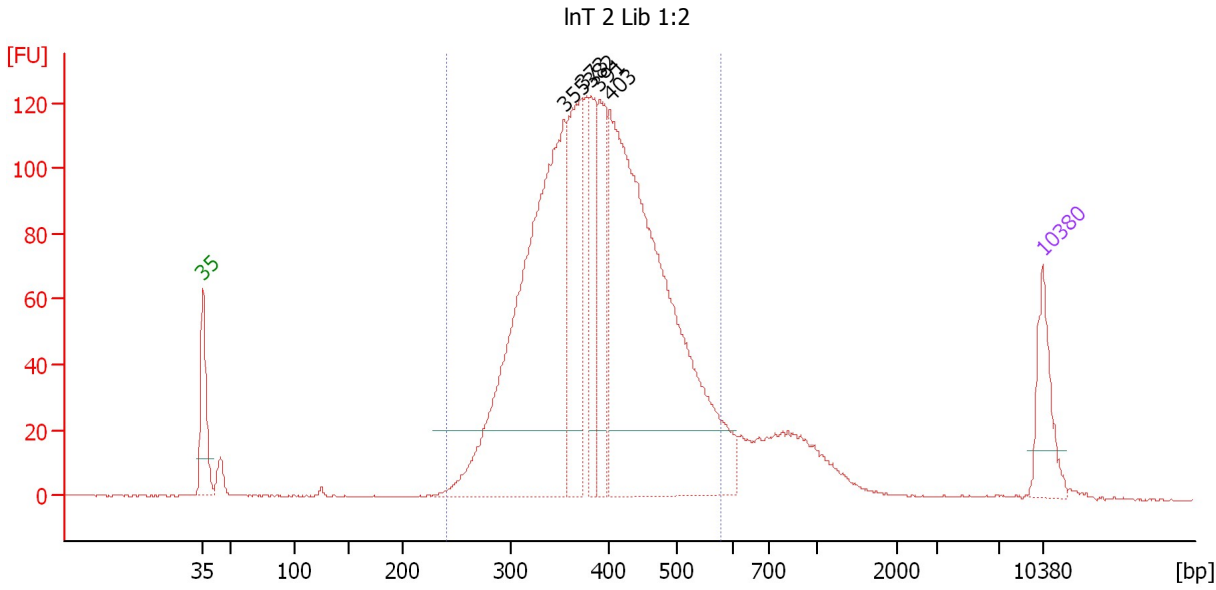
Peak table for Ladder

Peak	Size [bp]	Conc. [pg/μl]	Molarity [pmol/l]	Observations
1	35	125.00	5,411.3	Lower Marker
2	50	150.00	4,545.5	Ladder Peak
3	100	150.00	2,272.7	Ladder Peak
4	150	150.00	1,515.2	Ladder Peak
5	200	150.00	1,136.4	Ladder Peak
6	300	150.00	757.6	Ladder Peak
7	400	150.00	568.2	Ladder Peak
8	500	150.00	454.5	Ladder Peak
9	600	150.00	378.8	Ladder Peak
10	700	150.00	324.7	Ladder Peak
11	1,000	150.00	227.3	Ladder Peak
12	2,000	150.00	113.6	Ladder Peak
13	3,000	150.00	75.8	Ladder Peak
14	7,000	150.00	32.5	Ladder Peak
15	10,380	75.00	10.9	Upper Marker

Assay Class: High Sensitivity DNA Assay
 Data Path: C:\...ents and Settings\Bioanalyzer\2012-05-22\2012-05-22_003.xad

Created: 5/22/2012 2:40:55 PM
 Modified: 5/22/2012 3:28:27 PM

Electropherogram Summary Continued ...



Setpoint Deviations for sample 1 : InT 2 Lib 1:2

Height Threshold [FU] : 20

Overall Results for sample 1 : InT 2 Lib 1:2

Number of peaks found: 5 Corr. Area 1: 2,179.5
 Noise: 0.1

Peak table for sample 1 : InT 2 Lib 1:2

Peak	Size [bp]	Conc. [pg/μl]	Molarity [pmol/l]	Observations
1	35	125.00	5,411.3	Lower Marker
2	355	968.62	4,130.9	
3	373	281.83	1,143.7	
4	382	165.26	655.3	
5	391	178.68	692.6	
6	403	1,128.04	4,244.7	
7	10,380	75.00	10.9	Upper Marker

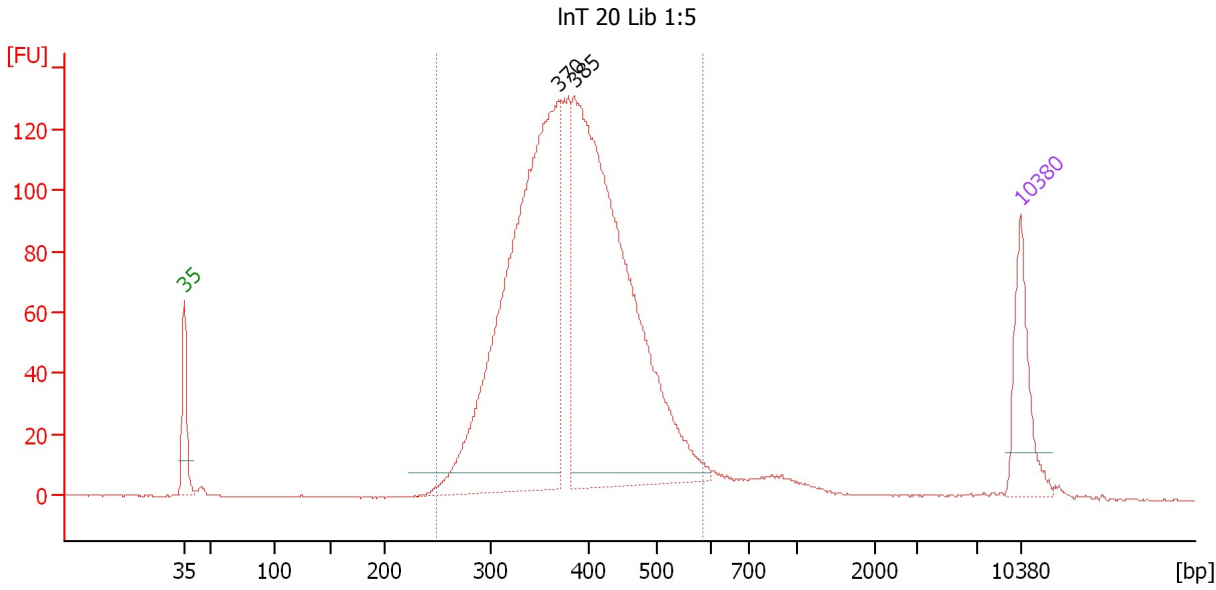
Region table for sample 1 : InT 2 Lib 1:2

From [bp]	To [bp]	Average Size [bp]	Molarity [pmol/l]	Conc. [pg/μl]	Corr. Area	% of Total	Size distribution in CV [%]	Color
241	581	395	11,516.8	2,880.51	2,179.5	89	17.6	Blue

Assay Class: High Sensitivity DNA Assay
 Data Path: C:\...ents and Settings\Bioanalyzer\2012-05-22\2012-05-22_003.xad

Created: 5/22/2012 2:40:55 PM
 Modified: 5/22/2012 3:28:27 PM

Electropherogram Summary Continued ...



Overall Results for sample 2 : InT 20 Lib 1:5

Number of peaks found: 2 Corr. Area 1: 2,081.3
 Noise: 0.2

Peak table for sample 2 : InT 20 Lib 1:5

Peak	Size [bp]	Conc. [pg/μl]	Molarity [pmol/l]	Observations
1	35	125.00	5,411.3	Lower Marker
2	370	853.89	3,500.6	
3	385	872.65	3,431.6	
4	10,380	75.00	10.9	Upper Marker

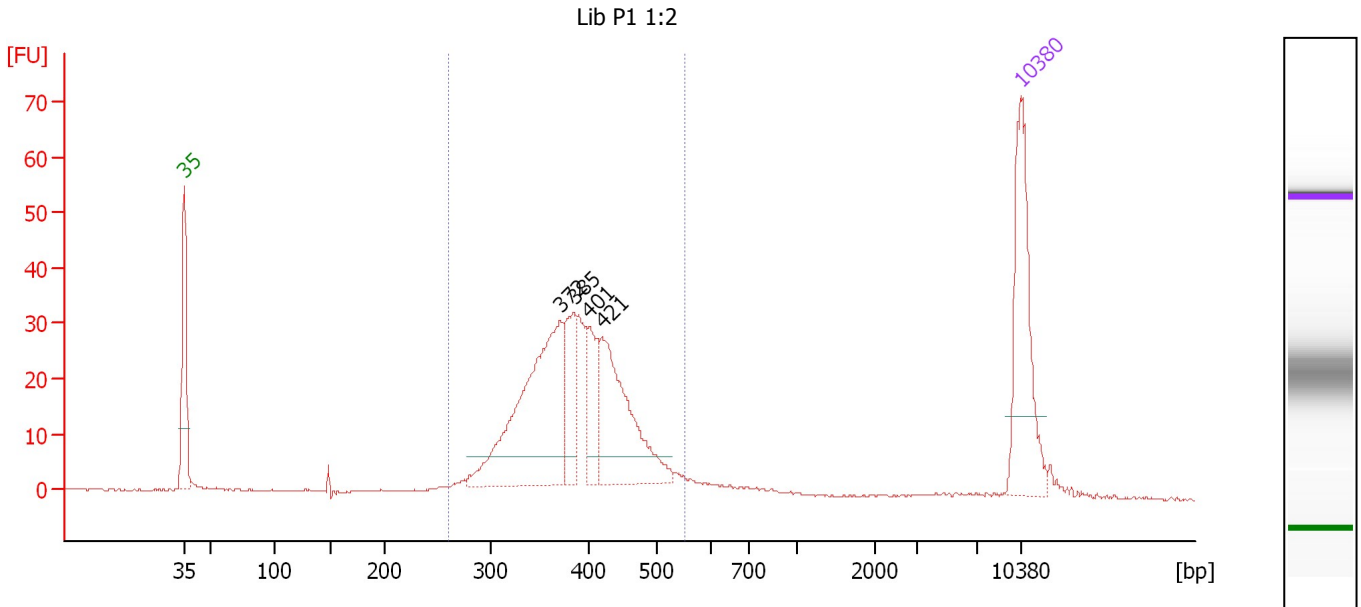
Region table for sample 2 : InT 20 Lib 1:5

From [bp]	To [bp]	Average Size [bp]	Molarity [pmol/l]	Conc. [pg/μl]	Corr. Area	% of Total	Size distribution in CV [%]	Color
250	584	388	7,924.8	1,963.00	2,081.3	95	16.4	Blue

Assay Class: High Sensitivity DNA Assay
 Data Path: C:\...ents and Settings\Bioanalyzer\2012-05-22\2012-05-22_003.xad

Created: 5/22/2012 2:40:55 PM
 Modified: 5/22/2012 3:28:27 PM

Electropherogram Summary Continued ...



Overall Results for sample 3 : Lib P1 1:2

Number of peaks found: 4 Corr. Area 1: 432.9
 Noise: 0.1

Peak table for sample 3 : Lib P1 1:2

Peak	Size [bp]	Conc. [pg/μl]	Molarity [pmol/l]	Observations
1	35	125.00	5,411.3	Lower Marker
2	372	188.86	770.1	
3	385	47.83	188.0	
4	401	37.99	143.4	
5	421	112.73	405.8	
6	10,380	75.00	10.9	Upper Marker

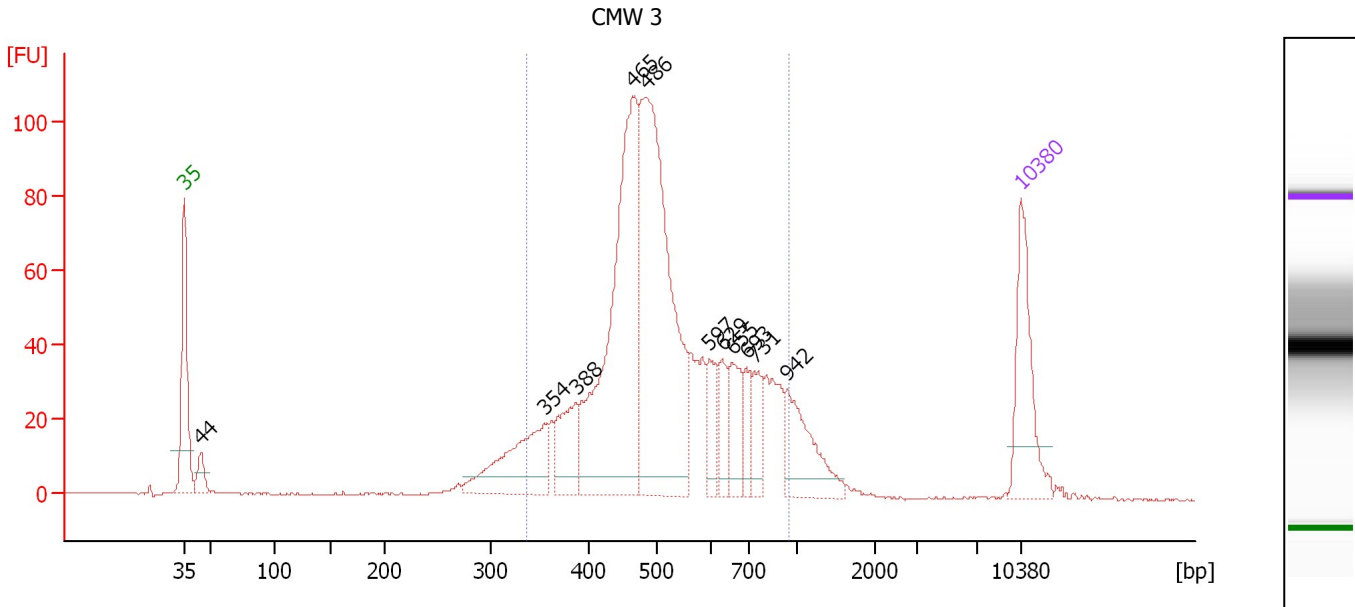
Region table for sample 3 : Lib P1 1:2

From [bp]	To [bp]	Average Size [bp]	Molarity [pmol/l]	Conc. [pg/μl]	Corr. Area	% of Total	Size distribution in CV [%]	Color
260	551	390	1,980.5	497.30	432.9	91	14.0	Blue

Assay Class: High Sensitivity DNA Assay
 Data Path: C:\...ents and Settings\Bioanalyzer\2012-05-22\2012-05-22_003.xad

Created: 5/22/2012 2:40:55 PM
 Modified: 5/22/2012 3:28:27 PM

Electropherogram Summary Continued ...



Overall Results for sample 4 : CMW 3

Number of peaks found: 11 Corr. Area 1: 1,213.2
 Noise: 0.1

Peak table for sample 4 : CMW 3

Peak	Size [bp]	Conc. [pg/μl]	Molarity [pmol/l]	Observations
1	35	125.00	5,411.3	Lower Marker
2	44	25.08	859.0	
3	354	115.60	494.3	
4	388	64.85	253.2	
5	465	369.52	1,202.9	
6	486	405.00	1,263.7	
7	597	34.09	86.6	
8	629	31.86	76.8	
9	655	45.86	106.1	
10	693	25.08	54.8	
11	731	34.36	71.3	
12	942	72.51	116.6	
13	10,380	75.00	10.9	Upper Marker

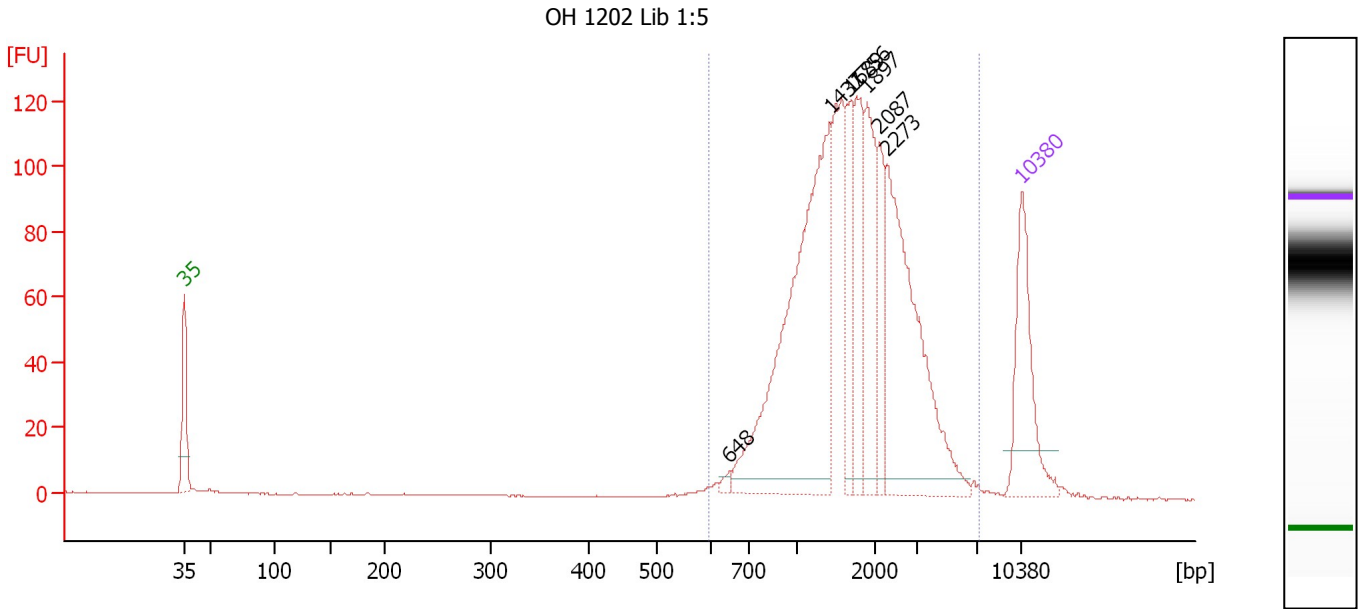
Region table for sample 4 : CMW 3

From [bp]	To [bp]	Average Size [bp]	Molarity [pmol/l]	Conc. [pg/μl]	Corr. Area	% of Total	Size distribution in CV [%]	Color
337	959	531	3,704.3	1,213.27	1,213.2	87	24.5	Blue

Assay Class: High Sensitivity DNA Assay
 Data Path: C:\...ents and Settings\Bioanalyzer\2012-05-22\2012-05-22_003.xad

Created: 5/22/2012 2:40:55 PM
 Modified: 5/22/2012 3:28:27 PM

Electropherogram Summary Continued ...



Overall Results for sample 5 : OH 1202 Lib 1:5

Number of peaks found: 7 Corr. Area 1: 1,343.2
 Noise: 0.1

Peak table for sample 5 : OH 1202 Lib 1:5

Peak	Size [bp]	Conc. [pg/μl]	Molarity [pmol/l]	Observations
1	35	125.00	5,411.3	Lower Marker
2	648	4.46	10.4	
3	1,437	310.33	327.2	
4	1,689	54.55	48.9	
5	1,756	65.69	56.7	
6	1,897	82.01	65.5	
7	2,087	48.02	34.9	
8	2,273	190.36	126.9	
9	10,380	75.00	10.9	Upper Marker

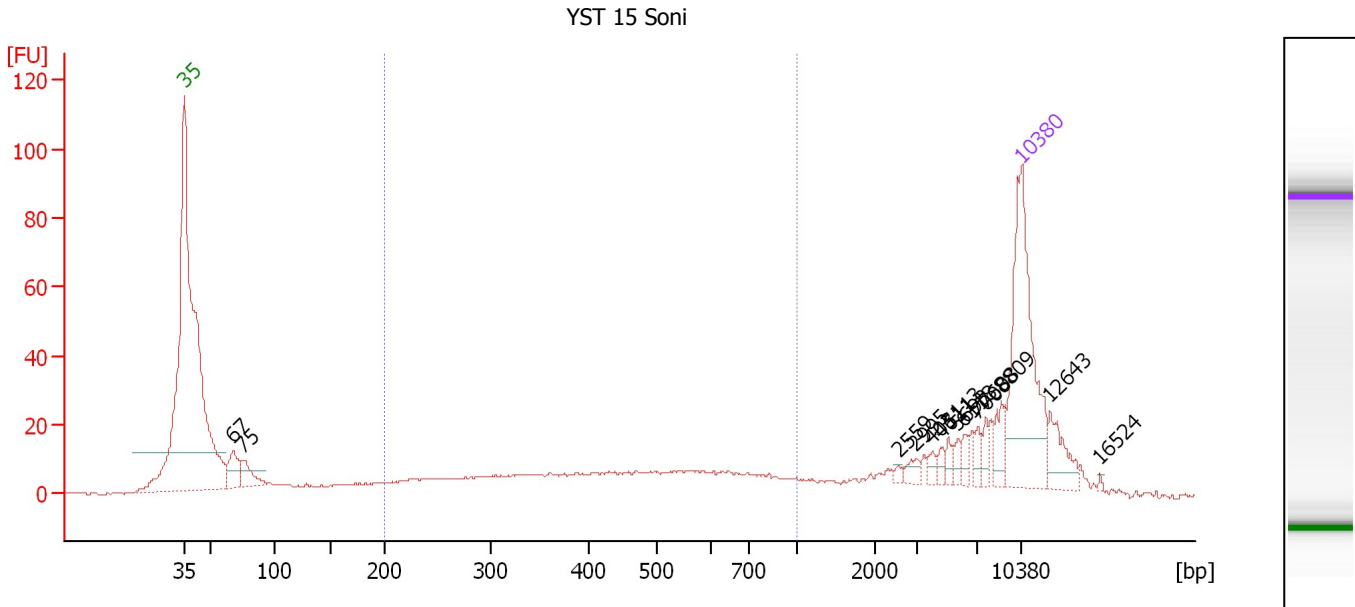
Region table for sample 5 : OH 1202 Lib 1:5

From [bp]	To [bp]	Average Size [bp]	Molarity [pmol/l]	Conc. [pg/μl]	Corr. Area	% of Total	Size distribution in CV [%]	Color
597	7,133	1,865	892.1	888.15	1,343.2	99	49.8	Blue

Assay Class: High Sensitivity DNA Assay
 Data Path: C:\...ents and Settings\Bioanalyzer\2012-05-22\2012-05-22_003.xad

Created: 5/22/2012 2:40:55 PM
 Modified: 5/22/2012 3:28:27 PM

Electropherogram Summary Continued ...



Overall Results for sample 6 : YST 15 Soni

Number of peaks found: 14 Corr. Area 1: 277.4
 Noise: 0.3

Peak table for sample 6 : YST 15 Soni

Peak	Size [bp]	Conc. [pg/μl]	Molarity [pmol/l]	Observations
1	35	125.00	5,411.3	Lower Marker
2	67	22.09	499.3	
3	75	17.04	344.3	
4	2,559	1.72	1.0	
5	2,995	4.28	2.2	
6	4,031	3.30	1.2	
7	4,611	3.33	1.1	
8	5,113	3.68	1.1	
9	5,693	3.86	1.0	
10	6,118	4.37	1.1	
11	7,008	4.86	1.1	
12	7,608	5.33	1.1	
13	8,809	10.24	1.8	
14	10,380	75.00	10.9	Upper Marker
15	12,643	0.00	0.0	
16	16,524	0.00	0.0	

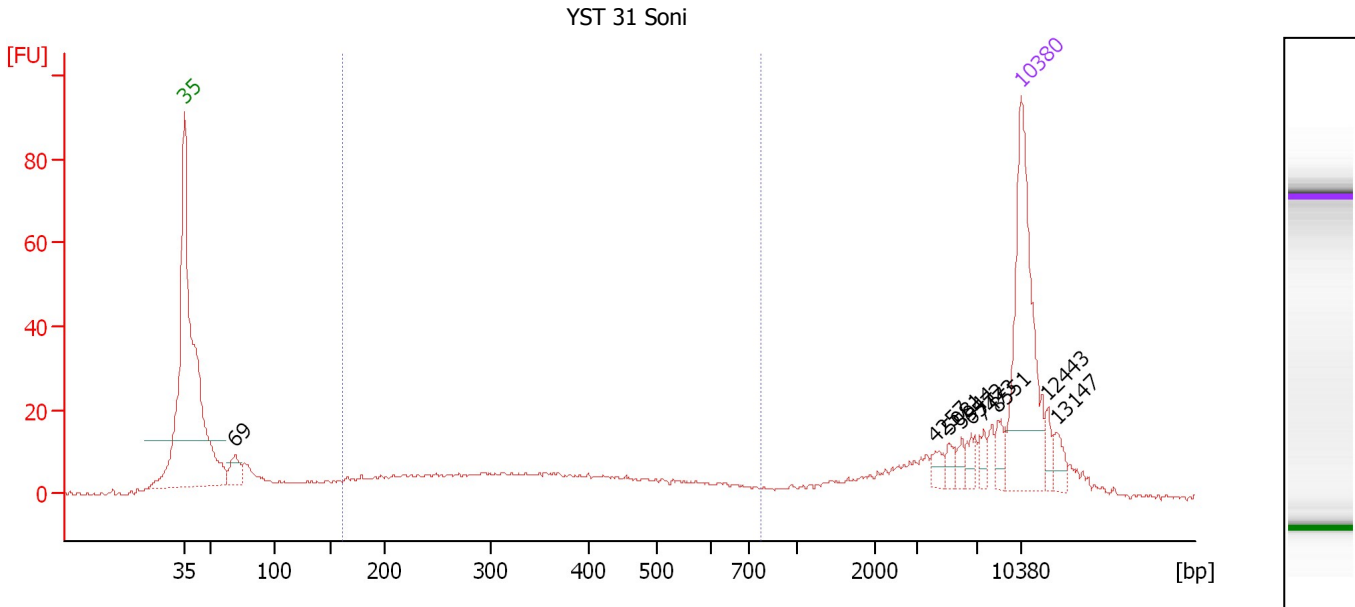
Region table for sample 6 : YST 15 Soni

From [bp]	To [bp]	Average Size [bp]	Molarity [pmol/l]	Conc. [pg/μl]	Corr. Area	% of Total	Size distribution in CV [%]	Color
200	1,000	467	782.7	193.11	277.4	44	39.8	Blue

Assay Class: High Sensitivity DNA Assay
 Data Path: C:\...ents and Settings\Bioanalyzer\2012-05-22\2012-05-22_003.xad

Created: 5/22/2012 2:40:55 PM
 Modified: 5/22/2012 3:28:27 PM

Electropherogram Summary Continued ...



Overall Results for sample 7 : YST 31 Soni

Number of peaks found: 9 Corr. Area 1: 215.9
 Noise: 0.4

Peak table for sample 7 : YST 31 Soni

Peak	Size [bp]	Conc. [pg/µl]	Molarity [pmol/l]	Observations
1	35	125.00	5,411.3	Lower Marker
2	69	15.99	353.2	
3	4,257	5.20	1.9	
4	5,081	5.01	1.5	
5	5,944	4.26	1.1	
6	6,572	5.69	1.3	
7	7,473	5.14	1.0	
8	8,551	6.76	1.2	
9	10,380	75.00	10.9	Upper Marker
10	12,443	0.00	0.0	
11	13,147	0.00	0.0	

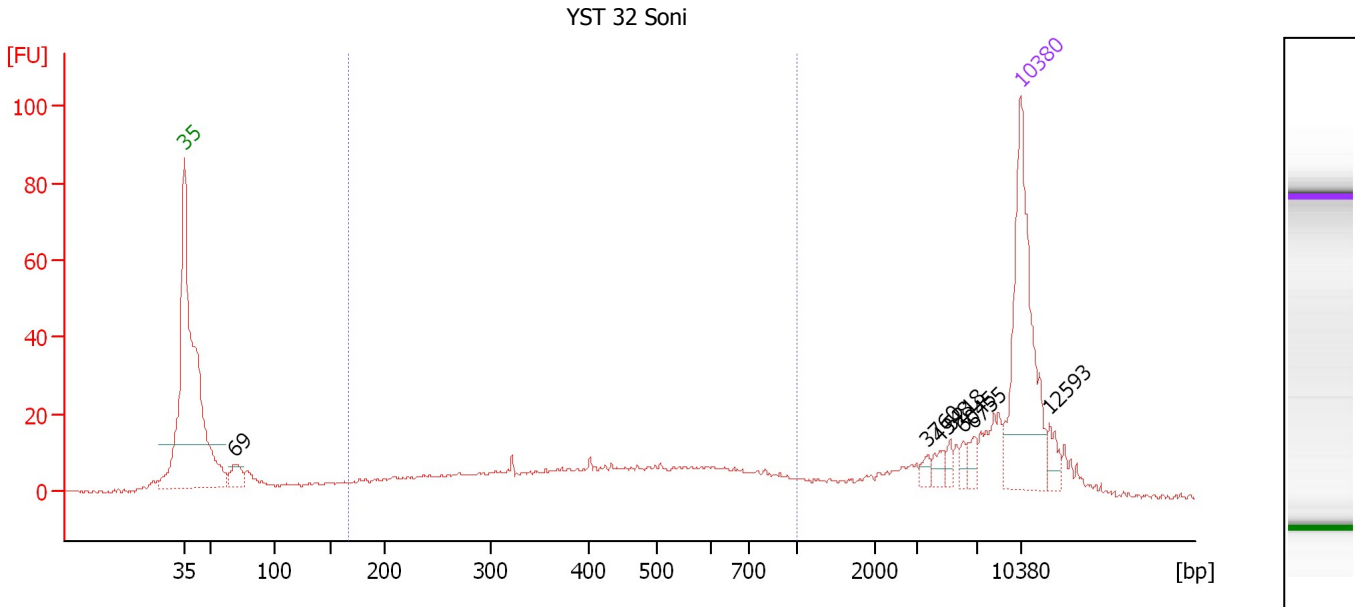
Region table for sample 7 : YST 31 Soni

From [bp]	To [bp]	Average Size [bp]	Molarity [pmol/l]	Conc. [pg/µl]	Corr. Area	% of Total	Size distribution in CV [%]	Color
161	774	363	946.9	183.52	215.9	44	37.9	Blue

Assay Class: High Sensitivity DNA Assay
 Data Path: C:\...ents and Settings\Bioanalyzer\2012-05-22\2012-05-22_003.xad

Created: 5/22/2012 2:40:55 PM
 Modified: 5/22/2012 3:28:27 PM

Electropherogram Summary Continued ...



Overall Results for sample 8 : YST 32 Soni

Number of peaks found: 7 Corr. Area 1: 287.9
 Noise: 0.4

Peak table for sample 8 : YST 32 Soni

Peak	Size [bp]	Conc. [pg/μl]	Molarity [pmol/l]	Observations
1	35	125.00	5,411.3	Lower Marker
2	69	13.03	287.3	
3	3,760	3.39	1.4	
4	4,548	5.02	1.7	
5	5,218	3.72	1.1	
6	6,045	3.65	0.9	
7	6,755	5.25	1.2	
8	10,380	75.00	10.9	Upper Marker
9	12,593	0.00	0.0	

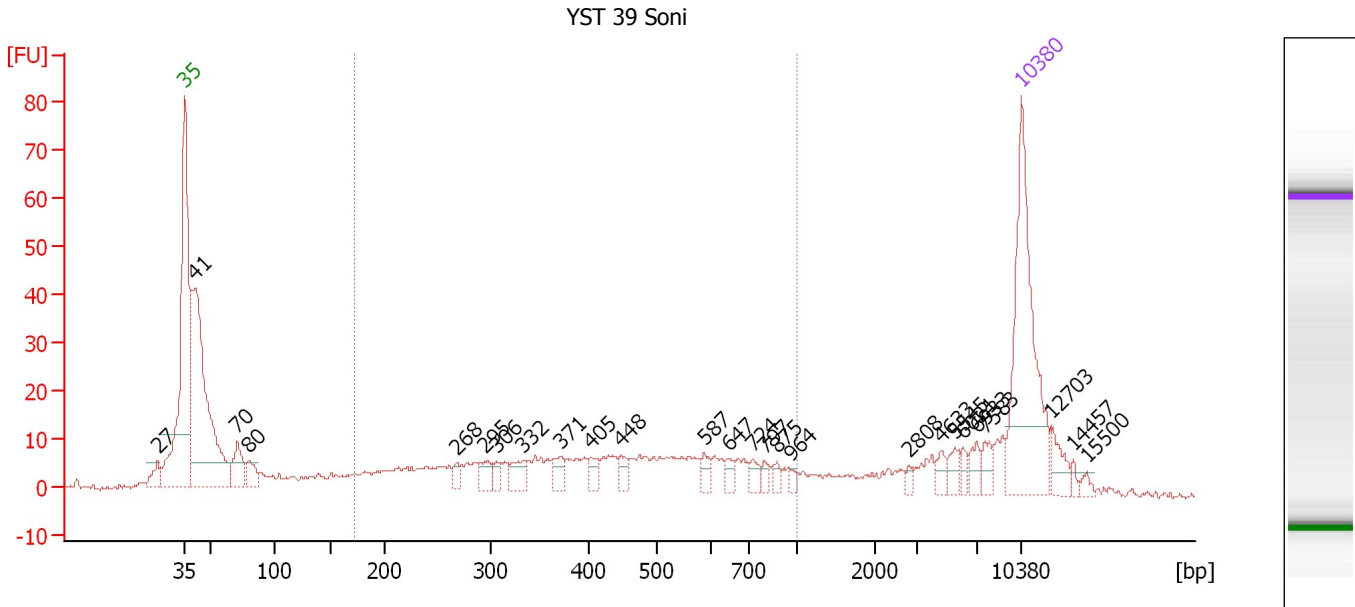
Region table for sample 8 : YST 32 Soni

From [bp]	To [bp]	Average Size [bp]	Molarity [pmol/l]	Conc. [pg/μl]	Corr. Area	% of Total	Size distribution in CV [%]	Color
167	1,000	453	913.4	210.49	287.9	53	41.4	Blue

Assay Class: High Sensitivity DNA Assay
 Data Path: C:\...ents and Settings\Bioanalyzer\2012-05-22\2012-05-22_003.xad

Created: 5/22/2012 2:40:55 PM
 Modified: 5/22/2012 3:28:27 PM

Electropherogram Summary Continued ...



Overall Results for sample 9 : YST 39 Soni

Number of peaks found: 26 Corr. Area 1: 286.8
 Noise: 0.4

Peak table for sample 9 : YST 39 Soni

Peak	Size [bp]	Conc. [pg/μl]	Molarity [pmol/l]	Observations
1	27	0.00	0.0	
2	35	125.00	5,411.3	Lower Marker
3	41	187.40	6,910.4	
4	70	22.12	475.9	
5	80	12.50	238.0	
6	268	5.30	29.9	
7	295	10.01	51.5	
8	306	5.38	26.6	
9	332	11.05	50.4	
10	371	8.72	35.6	
11	405	6.28	23.5	
12	448	6.60	22.3	
13	587	5.86	15.1	
14	647	4.41	10.3	
15	724	5.19	10.9	
16	797	3.73	7.1	
17	875	3.15	5.5	
18	964	2.53	4.0	
19	2,808	2.25	1.2	
20	4,633	4.31	1.4	
21	5,545	5.73	1.6	
22	6,021	3.61	0.9	
23	6,933	5.94	1.3	
24	7,583	6.03	1.2	
25	10,380	75.00	10.9	Upper Marker
26	12,703	0.00	0.0	


Assay Class: High Sensitivity DNA Assay
Data Path: C:\...ents and Settings\Bioanalyzer\2012-05-22\2012-05-22_003.xad

Created: 5/22/2012 2:40:55 PM
Modified: 5/22/2012 3:28:27 PM

Electropherogram Summary Continued ...**... Peak table for sample 9 : YST 39 Soni**

Peak	Size [bp]	Conc. [pg/ μ l]	Molarity [pmol/l]	Observations
27	14,457	0.00	0.0	
28	15,500	0.00	0.0	

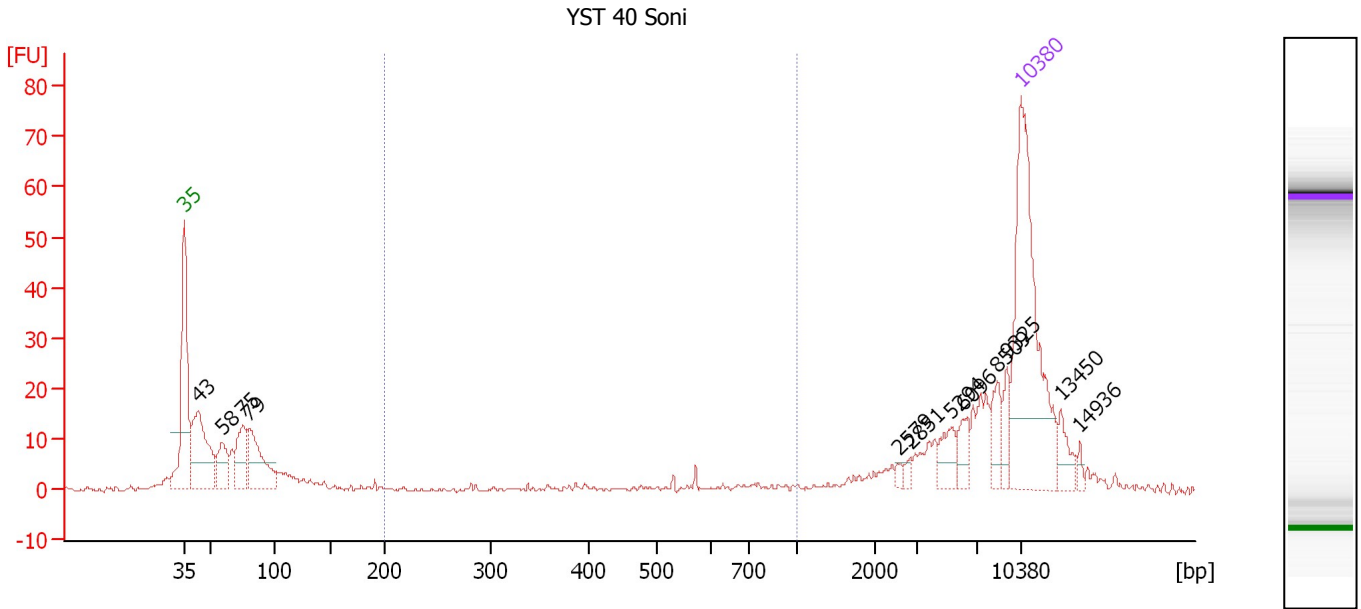
Region table for sample 9 : YST 39 Soni

From [bp]	To [bp]	Average Size [bp]	Molarity [pmol/l]	Conc. [pg/ μ l]	Corr. Area	% of Total	Size distribution in CV [%]	Color
172	1,000	452	1,123.7	260.46	286.8	45	41.2	

Assay Class: High Sensitivity DNA Assay
 Data Path: C:\...ents and Settings\Bioanalyzer\2012-05-22\2012-05-22_003.xad

Created: 5/22/2012 2:40:55 PM
 Modified: 5/22/2012 3:28:27 PM

Electropherogram Summary Continued ...



Overall Results for sample 10 : YST 40 Soni

Number of peaks found: 12 Corr. Area 1: 36.5
 Noise: 0.4

Peak table for sample 10 : YST 40 Soni

Peak	Size [bp]	Conc. [pg/μl]	Molarity [pmol/l]	Observations
1	35	125.00	5,411.3	Lower Marker
2	43	57.92	2,047.0	
3	58	20.17	523.9	
4	75	27.14	549.7	
5	79	37.87	724.8	
6	2,579	1.73	1.0	
7	2,851	1.95	1.0	
8	5,294	9.05	2.6	
9	6,096	7.60	1.9	
10	8,509	9.54	1.7	
11	9,325	7.20	1.2	
12	10,380	75.00	10.9	Upper Marker
13	13,450	0.00	0.0	
14	14,936	0.00	0.0	

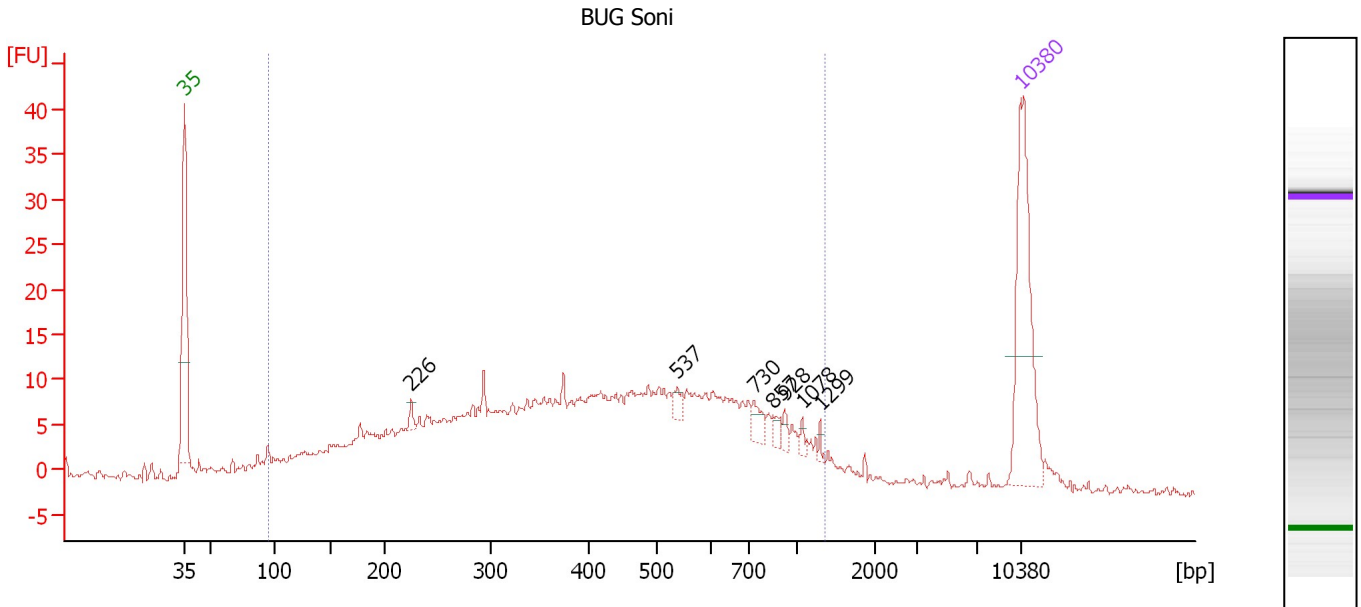
Region table for sample 10 : YST 40 Soni

From [bp]	To [bp]	Average Size [bp]	Molarity [pmol/l]	Conc. [pg/μl]	Corr. Area	% of Total	Size distribution in CV [%]	Color
200	1,000	534	98.5	28.03	36.5	9	36.9	Blue

Assay Class: High Sensitivity DNA Assay
 Data Path: C:\...ents and Settings\Bioanalyzer\2012-05-22\2012-05-22_003.xad

Created: 5/22/2012 2:40:55 PM
 Modified: 5/22/2012 3:28:27 PM

Electropherogram Summary Continued ...



Setpoint Deviations for sample 11 : BUG Soni

Height Threshold [FU] : 3

Overall Results for sample 11 : BUG Soni

Number of peaks found: 7 Corr. Area 1: 416.8
 Noise: 0.3

Peak table for sample 11 : BUG Soni

Peak	Size [bp]	Conc. [pg/μl]	Molarity [pmol/l]	Observations
1	35	125.00	5,411.3	Lower Marker
2	226	4.98	33.5	
3	537	5.19	14.7	
4	730	9.19	19.1	
5	857	4.54	8.0	
6	928	4.34	7.1	
7	1,078	3.20	4.5	
8	1,299	2.35	2.7	
9	10,380	75.00	10.9	Upper Marker

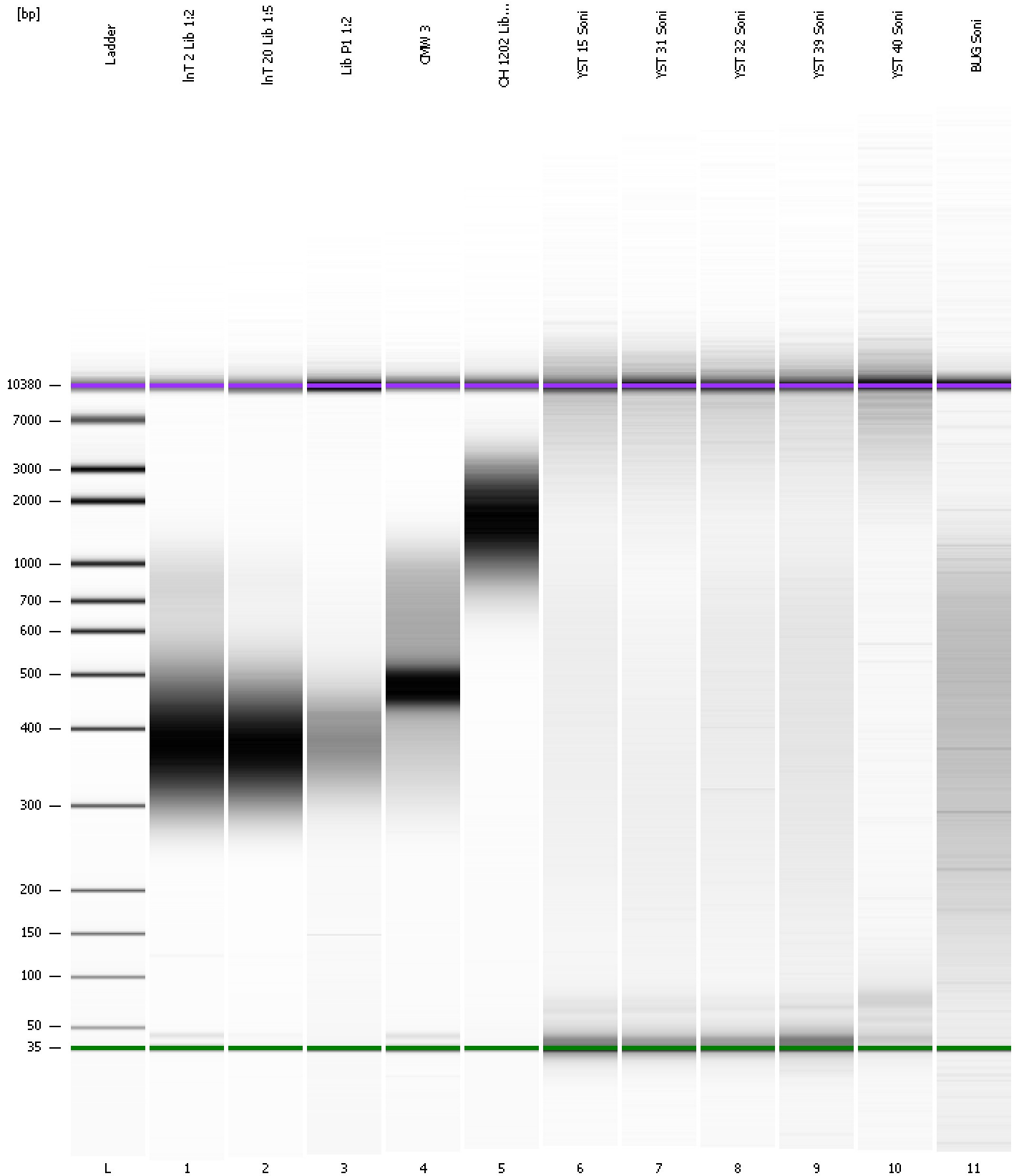
Region table for sample 11 : BUG Soni

From [bp]	To [bp]	Average Size [bp]	Molarity [pmol/l]	Conc. [pg/μl]	Corr. Area	% of Total	Size distribution in CV [%]	Color
94	1,364	465	4,472.1	924.40	416.8	94	50.8	Blue

Assay Class: High Sensitivity DNA Assay
Data Path: C:\...ents and Settings\Bioanalyzer\2012-05-22\2012-05-22_003.xad

Created: 5/22/2012 2:40:55 PM
Modified: 5/22/2012 3:28:27 PM

Gel Image



Assay Class: High Sensitivity DNA Assay
 Data Path: C:\...ents and Settings\Bioanalyzer\2012-05-22\2012-05-22_003.xad

Created: 5/22/2012 2:40:55 PM
 Modified: 5/22/2012 3:28:27 PM

Run Logbook

Description	Number	Source	Category	Sub Category	Time	Time Zone	User	Host
Run ended on port 1 (Number of wells acquired: 12)		Instrument	Run		5/22/2012 3:22:14 PM	(GMT --07:00) Pacific Standard Time	UC Davis	D8XSMGH1
Run started on port 1 (File: C:\Documents and Settings\Bioanalyzer\2012-05-22\2012-05-22_003.xad)		Instrument	Run		5/22/2012 2:41:00 PM	(GMT --07:00) Pacific Standard Time	UC Davis	D8XSMGH1
Product Number : G2938B		Instrument	Run		5/22/2012 2:41:00 PM	(GMT --07:00) Pacific Standard Time	UC Davis	D8XSMGH1
Name :		Instrument	Run		5/22/2012 2:41:00 PM	(GMT --07:00) Pacific Standard Time	UC Davis	D8XSMGH1
Vendor : Agilent Technologies		Instrument	Run		5/22/2012 2:41:00 PM	(GMT --07:00) Pacific Standard Time	UC Davis	D8XSMGH1
Serial# : DE13701086		Instrument	Run		5/22/2012 2:41:00 PM	(GMT --07:00) Pacific Standard Time	UC Davis	D8XSMGH1
Firmware : C.01.069		Instrument	Run		5/22/2012 2:41:00 PM	(GMT --07:00) Pacific Standard Time	UC Davis	D8XSMGH1
Cartridge : Electrode		Instrument	Run		5/22/2012 2:41:00 PM	(GMT --07:00) Pacific Standard Time	UC Davis	D8XSMGH1