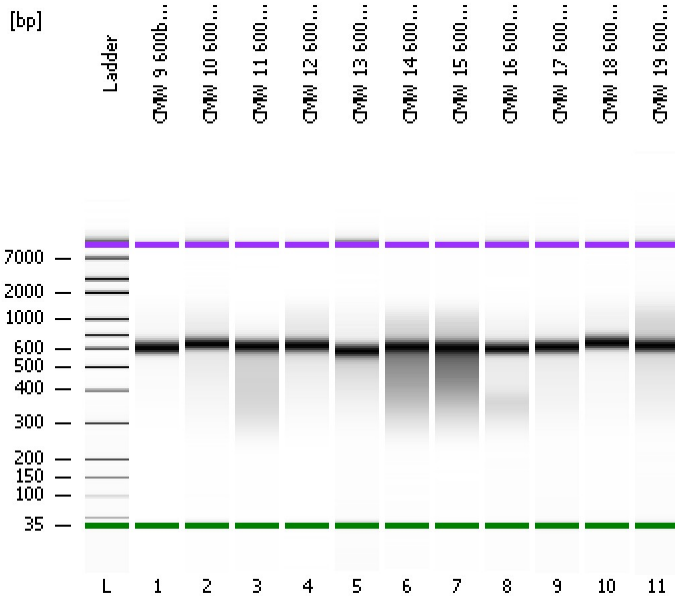


Assay Class: High Sensitivity DNA Assay  
Data Path: C:\...ents and Settings\Bioanalyzer\2012-05-24\2012-05-24\_001.xad

Created: 5/24/2012 9:23:17 AM  
Modified: 5/24/2012 10:06:27 AM

Electrophoresis File Run Summary



Instrument Information:

Instrument Name: DE13701086      Firmware: C.01.069  
Serial#: DE13701086      Type: G2938B

Assay Information:

Assay Origin Path: C:\Program Files\Agilent\2100 bioanalyzer\2100 expert\assays\dsDNA\High Sensitivity DNA.xsy  
Assay Class: High Sensitivity DNA Assay  
Version: 1.03  
Assay Comments: Copyright © 2003-2010 Agilent Technologies

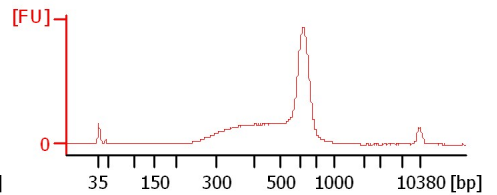
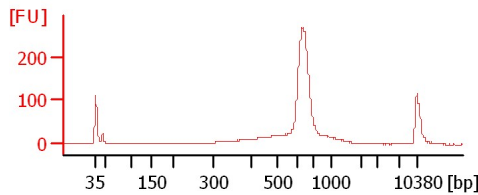
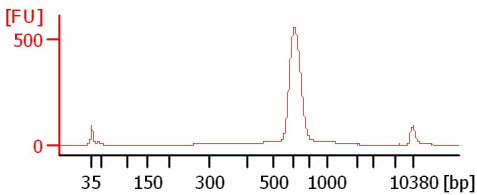
Chip Information:

Chip Lot #:   
Reagent Kit Lot #:   
Chip Comments:

CMW 9 600bp Lib (10 DNA, 12 cyc)

CMW 10 600bp Lib (15 DNA, 12 cyc)

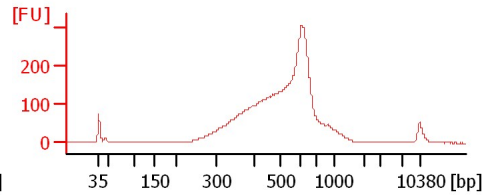
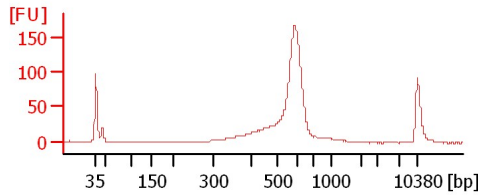
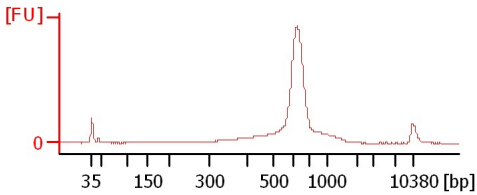
CMW 11 600bp Lib (15 DNA, 12 cyc)



CMW 12 600bp Lib (10 DNA, 12 cyc)

CMW 13 600bp Lib (10 DNA, 12 cyc)

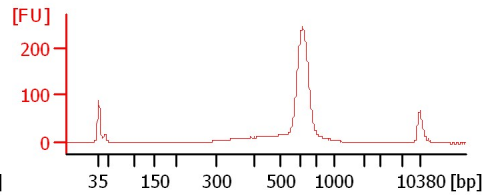
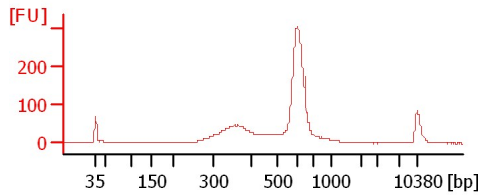
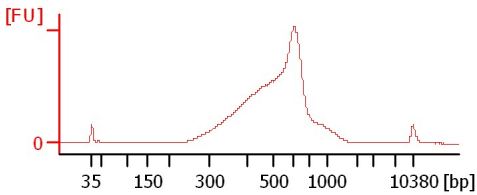
CMW 14 600bp Lib (10 DNA, 12 cyc)



CMW 15 600bp Lib (10 DNA, 12 cyc)

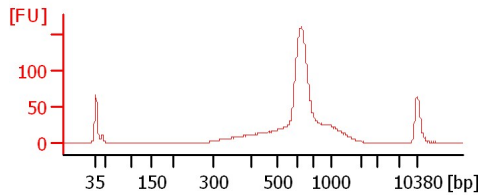
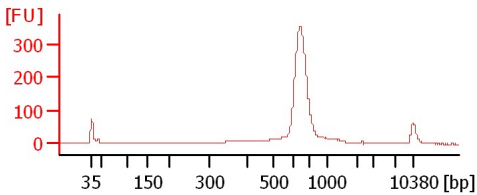
CMW 16 600bp Lib (10 DNA, 12 cyc)

CMW 17 600bp Lib (15 DNA, 12 cyc)



CMW 18 600bp Lib (15 DNA, 12 cyc)

CMW 19 600bp Lib (20 DNA, 12 cyc)



Assay Class: High Sensitivity DNA Assay  
Data Path: C:\...ents and Settings\Bioanalyzer\2012-05-24\2012-05-24\_001.xad

Created: 5/24/2012 9:23:17 AM  
Modified: 5/24/2012 10:06:27 AM

**Electrophoresis File Run Summary (Chip Summary)**

Sample Name	Sample Comment	Rest. Digest	Status	Observation	Result Label	Result Color
CMW 9 600bp Lib (10 DNA, 12 cyc)		<input type="checkbox"/>	✓			
CMW 10 600bp Lib (15 DNA, 12		<input type="checkbox"/>	✓			
CMW 11 600bp Lib (15 DNA, 12		<input type="checkbox"/>	✓			
CMW 12 600bp Lib (10 DNA, 12		<input type="checkbox"/>	✓			
CMW 13 600bp Lib (10 DNA, 12		<input type="checkbox"/>	✓			
CMW 14 600bp Lib (10 DNA, 12		<input type="checkbox"/>	✓			
CMW 15 600bp Lib (10 DNA, 12		<input type="checkbox"/>	✓			
CMW 16 600bp Lib (10 DNA, 12		<input type="checkbox"/>	✓			
CMW 17 600bp Lib (15 DNA, 12		<input type="checkbox"/>	✓			
CMW 18 600bp Lib (15 DNA, 12		<input type="checkbox"/>	✓			
CMW 19 600bp Lib (20 DNA, 12		<input type="checkbox"/>	✓			
Ladder		<input type="checkbox"/>	✓			

**Chip Lot #**

**Reagent Kit Lot #**

**Chip Comments :**

Assay Class: High Sensitivity DNA Assay  
Data Path: C:\...ents and Settings\Bioanalyzer\2012-05-24\2012-05-24\_001.xad

Created: 5/24/2012 9:23:17 AM  
Modified: 5/24/2012 10:06:27 AM

**Electrophoresis Assay Details**

**General Analysis Settings**

Number of Available Sample and Ladder Wells (Max.) : 12  
Minimum Visible Range [s] : 32  
Maximum Visible Range [s] : 138  
Start Analysis Time Range [s] : 33  
End Analysis Time Range [s] : 137.5  
Ladder Concentration [pg/μl] : 1950  
Uses Standard Area for Ladder Fragments  
Lower Marker Concentration [pg/μl] : 125  
Upper Marker Concentration [pg/μl] : 75  
Used Upper Marker for Quantitation  
Standard Curve Fit is Point to Point  
Show Data Aligned to Lower and Upper Marker

**Integrator Settings**

Integration Start Time [s] : 33.05  
Integration End Time [s] : 137  
Slope Threshold : 0.8  
Height Threshold [FU] : 5  
Area Threshold : 0.1  
Width Threshold [s] : 0.6  
Baseline Plateau [s] : 0.5

**Filter Settings**

Filter Width [s] : 0.5  
Polynomial Order : 4

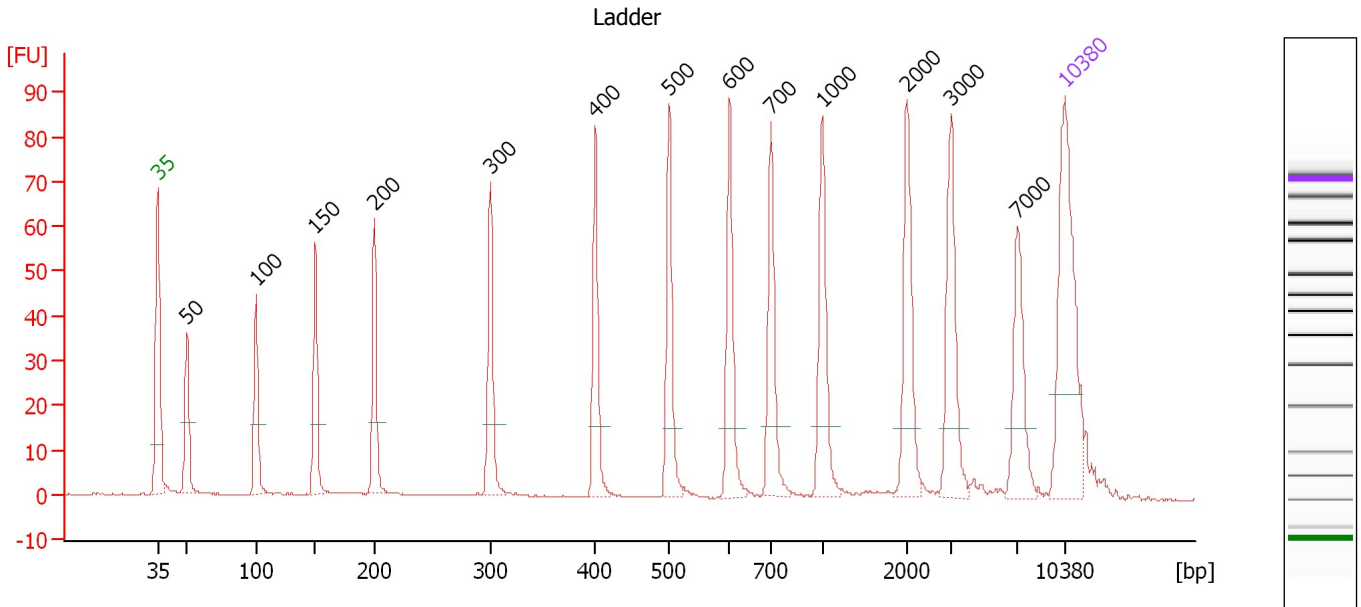
**Ladder**

Ladder Peak	Size	Area
1	35	160
2	50	210
3	100	208
4	150	221
5	200	242
6	300	270
7	400	305
8	500	306
9	600	336
10	700	321
11	1000	366
12	2000	413
13	3000	411
14	7000	400
15	10380	214

Assay Class: High Sensitivity DNA Assay  
 Data Path: C:\...ents and Settings\Bioanalyzer\2012-05-24\2012-05-24\_001.xad

Created: 5/24/2012 9:23:17 AM  
 Modified: 5/24/2012 10:06:27 AM

**Electropherogram Summary**



**Overall Results for Ladder**

Noise: 0.1

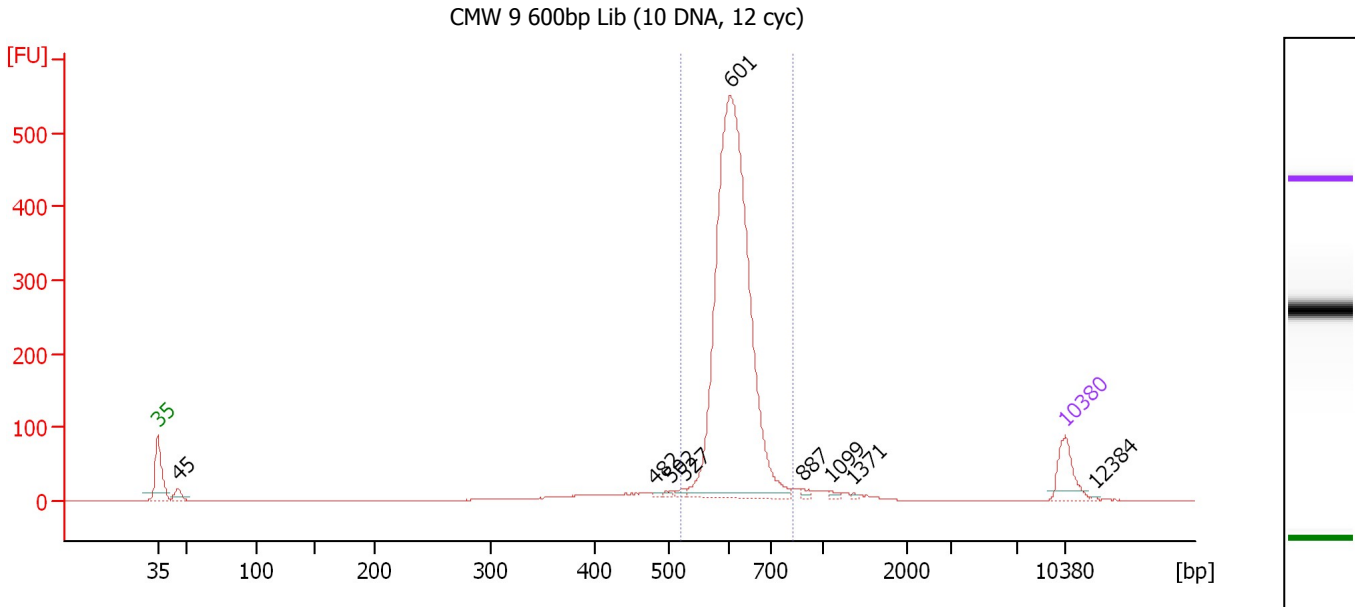
**Peak table for Ladder**

Peak	Size [bp]	Conc. [pg/μl]	Molarity [pmol/l]	Observations
1	35	125.00	5,411.3	Lower Marker
2	50	150.00	4,545.5	Ladder Peak
3	100	150.00	2,272.7	Ladder Peak
4	150	150.00	1,515.2	Ladder Peak
5	200	150.00	1,136.4	Ladder Peak
6	300	150.00	757.6	Ladder Peak
7	400	150.00	568.2	Ladder Peak
8	500	150.00	454.5	Ladder Peak
9	600	150.00	378.8	Ladder Peak
10	700	150.00	324.7	Ladder Peak
11	1,000	150.00	227.3	Ladder Peak
12	2,000	150.00	113.6	Ladder Peak
13	3,000	150.00	75.8	Ladder Peak
14	7,000	150.00	32.5	Ladder Peak
15	10,380	75.00	10.9	Upper Marker

Assay Class: High Sensitivity DNA Assay  
 Data Path: C:\...ents and Settings\Bioanalyzer\2012-05-24\2012-05-24\_001.xad

Created: 5/24/2012 9:23:17 AM  
 Modified: 5/24/2012 10:06:27 AM

**Electropherogram Summary Continued ...**



**Overall Results for sample 1 : CMW 9 600bp Lib (10 DNA, 12 cyc)**

Number of peaks found: 9                      Corr. Area 1: 2,005.5  
 Noise: 0.1

**Peak table for sample 1 : CMW 9 600bp Lib (10 DNA, 12 cyc)**

Peak	Size [bp]	Conc. [pg/μl]	Molarity [pmol/l]	Observations
1	35	125.00	5,411.3	Lower Marker
2	45	37.34	1,246.6	
3	482	4.73	14.9	
4	502	7.20	21.7	
5	527	10.69	30.7	
6	601	1,720.77	4,335.6	
7	887	9.30	15.9	
8	1,099	7.38	10.2	
9	1,371	3.35	3.7	
10	10,380	75.00	10.9	Upper Marker
11	12,384	0.00	0.0	

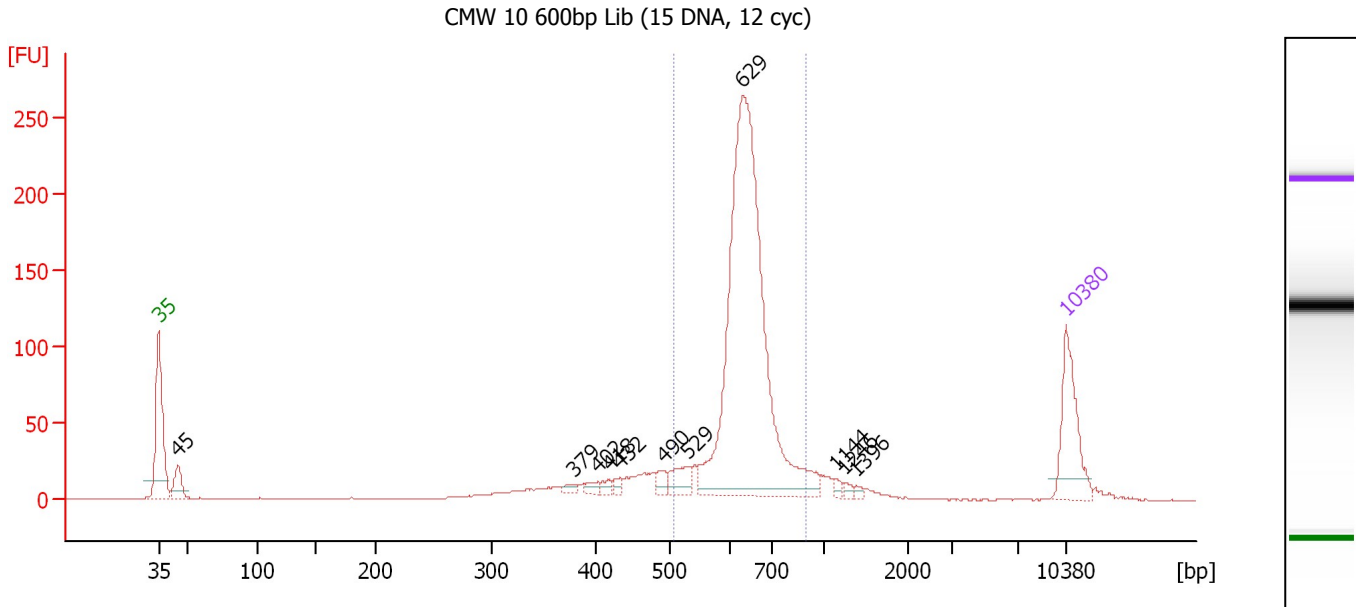
**Region table for sample 1 : CMW 9 600bp Lib (10 DNA, 12 cyc)**

From [bp]	To [bp]	Average Size [bp]	Molarity [pmol/l]	Conc. [pg/μl]	Corr. Area	% of Total	Size distribution in CV [%]	Color
519	830	614	4,441.6	1,793.03	2,005.5	88	6.3	Blue

Assay Class: High Sensitivity DNA Assay  
 Data Path: C:\...ents and Settings\Bioanalyzer\2012-05-24\2012-05-24\_001.xad

Created: 5/24/2012 9:23:17 AM  
 Modified: 5/24/2012 10:06:27 AM

**Electropherogram Summary Continued ...**



**Overall Results for sample 2 : CMW 10 600bp Lib (15 DNA, 12 cyc)**

Number of peaks found: 11                      Corr. Area 1: 1,015.4  
 Noise: 0.2

**Peak table for sample 2 : CMW 10 600bp Lib (15 DNA, 12 cyc)**

Peak	Size [bp]	Conc. [pg/μl]	Molarity [pmol/l]	Observations
1	35	125.00	5,411.3	Lower Marker
2	45	41.14	1,392.5	
3	379	7.15	28.6	
4	402	8.99	33.9	
5	418	7.65	27.7	
6	432	8.12	28.5	
7	490	13.01	40.2	
8	529	30.93	88.5	
9	629	702.37	1,690.9	
10	1,144	6.15	8.1	
11	1,246	5.51	6.7	
12	1,396	3.45	3.7	
13	10,380	75.00	10.9	Upper Marker

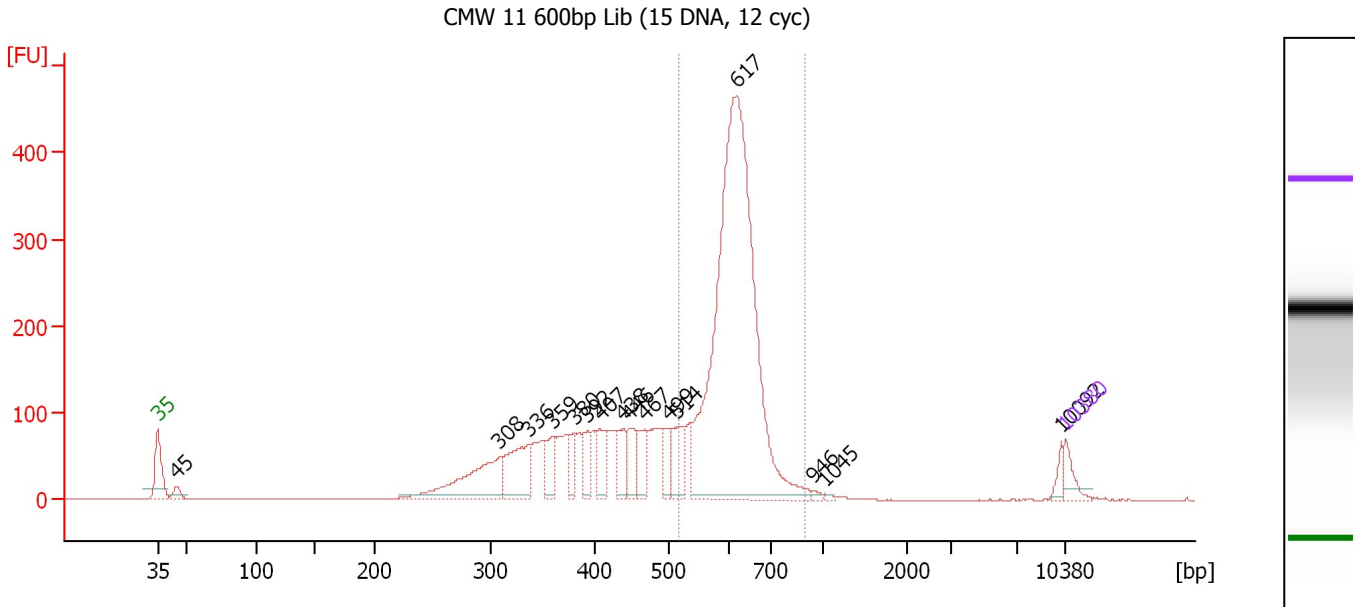
**Region table for sample 2 : CMW 10 600bp Lib (15 DNA, 12 cyc)**

From [bp]	To [bp]	Average Size [bp]	Molarity [pmol/l]	Conc. [pg/μl]	Corr. Area	% of Total	Size distribution in CV [%]	Color
505	896	640	1,763.3	738.74	1,015.4	74	9.3	Blue

Assay Class: High Sensitivity DNA Assay  
 Data Path: C:\...ents and Settings\Bioanalyzer\2012-05-24\2012-05-24\_001.xad

Created: 5/24/2012 9:23:17 AM  
 Modified: 5/24/2012 10:06:27 AM

**Electropherogram Summary Continued ...**



**Overall Results for sample 3 : CMW 11 600bp Lib (15 DNA, 12 cyc)**

Number of peaks found: 16                      Corr. Area 1: 1,999.3  
 Noise: 0.1

**Peak table for sample 3 : CMW 11 600bp Lib (15 DNA, 12 cyc)**

Peak	Size [bp]	Conc. [pg/μl]	Molarity [pmol/l]	Observations
1	35	125.00	5,411.3	Lower Marker
2	45	64.86	2,185.2	
3	308	513.38	2,522.8	
4	336	366.52	1,650.4	
5	359	158.38	668.4	
6	380	117.02	466.8	
7	392	126.61	489.1	
8	407	162.30	603.7	
9	438	133.05	460.5	
10	446	160.73	546.3	
11	467	147.38	478.6	
12	499	112.36	341.5	
13	514	206.76	609.7	
14	617	3,175.61	7,798.6	
15	946	14.45	23.2	
16	1,045	7.90	11.5	
17	10,092	36.75	5.5	
18	10,380	75.00	10.9	Upper Marker

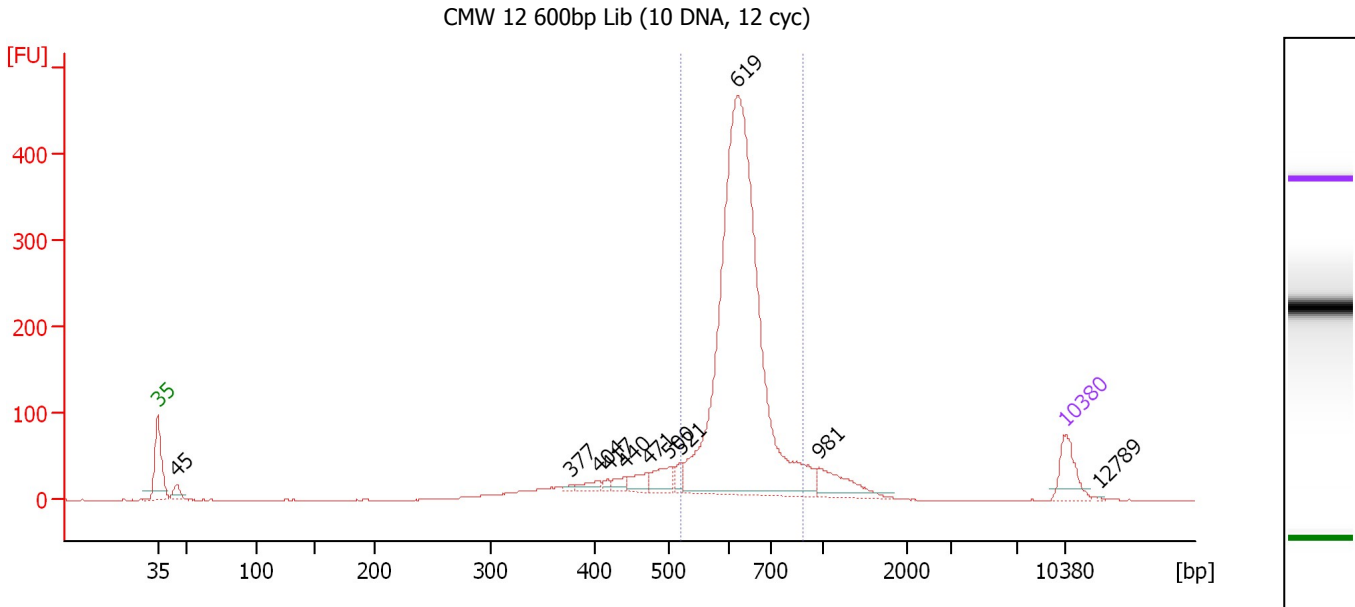
**Region table for sample 3 : CMW 11 600bp Lib (15 DNA, 12 cyc)**

From [bp]	To [bp]	Average Size [bp]	Molarity [pmol/l]	Conc. [pg/μl]	Corr. Area	% of Total	Size distribution in CV [%]	Color
515	904	615	8,482.3	3,419.68	1,999.3	53	8.5	Blue

Assay Class: High Sensitivity DNA Assay  
 Data Path: C:\...ents and Settings\Bioanalyzer\2012-05-24\2012-05-24\_001.xad

Created: 5/24/2012 9:23:17 AM  
 Modified: 5/24/2012 10:06:27 AM

**Electropherogram Summary Continued ...**



**Overall Results for sample 4 : CMW 12 600bp Lib (10 DNA, 12 cyc)**

Number of peaks found: 11                      Corr. Area 1: 1,936.2  
 Noise: 0.1

**Peak table for sample 4 : CMW 12 600bp Lib (10 DNA, 12 cyc)**

Peak	Size [bp]	Conc. [pg/μl]	Molarity [pmol/l]	Observations
1	35	125.00	5,411.3	Lower Marker
2	45	46.19	1,557.7	
3	377	6.25	25.1	
4	404	26.44	99.2	
5	417	12.90	46.9	
6	440	25.56	88.1	
7	471	47.76	153.6	
8	500	65.45	198.4	
9	521	29.06	84.5	
10	619	1,925.04	4,710.7	
11	981	103.29	159.5	
12	10,380	75.00	10.9	Upper Marker
13	12,789	0.00	0.0	

**Region table for sample 4 : CMW 12 600bp Lib (10 DNA, 12 cyc)**

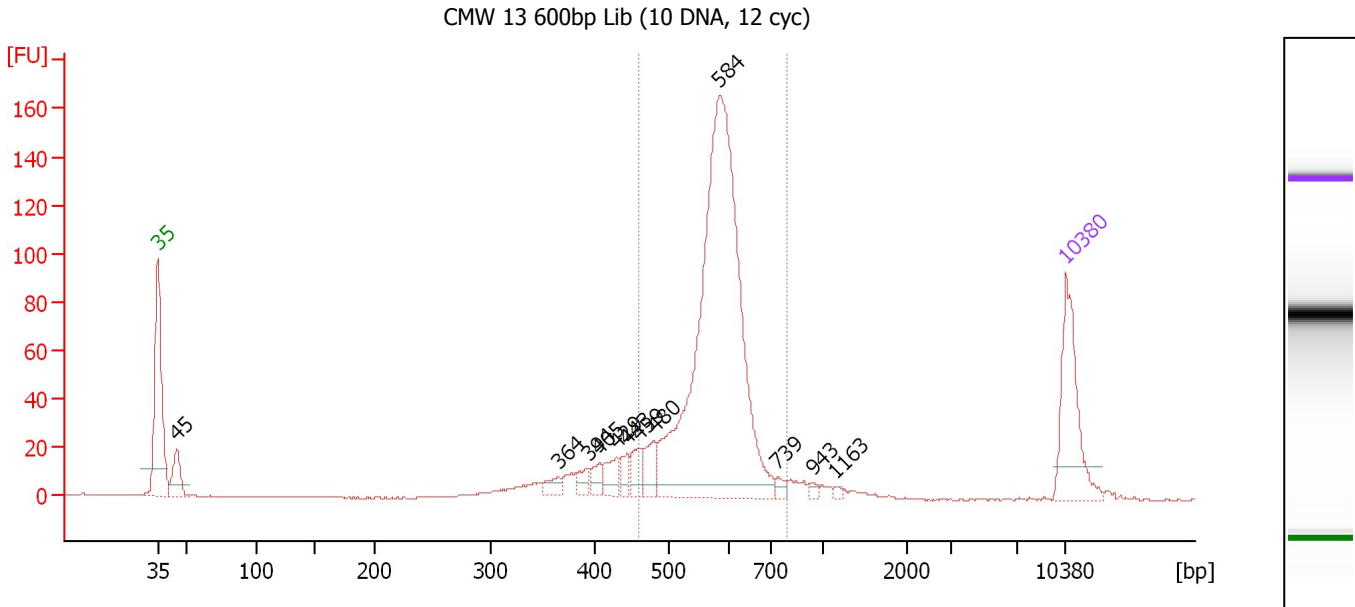
From [bp]	To [bp]	Average Size [bp]	Molarity [pmol/l]	Conc. [pg/μl]	Corr. Area	% of Total	Size distribution in CV [%]	Color
520	882	630	4,777.3	1,972.18	1,936.2	75	9.1	Blue



Assay Class: High Sensitivity DNA Assay  
 Data Path: C:\...ents and Settings\Bioanalyzer\2012-05-24\2012-05-24\_001.xad

Created: 5/24/2012 9:23:17 AM  
 Modified: 5/24/2012 10:06:27 AM

**Electropherogram Summary Continued ...**



**Overall Results for sample 5 : CMW 13 600bp Lib (10 DNA, 12 cyc)**

Number of peaks found: 12                      Corr. Area 1: 777.2  
 Noise: 0.1

**Peak table for sample 5 : CMW 13 600bp Lib (10 DNA, 12 cyc)**

Peak	Size [bp]	Conc. [pg/µl]	Molarity [pmol/l]	Observations
1	35	125.00	5,411.3	Lower Marker
2	45	42.80	1,447.9	
3	364	12.72	52.9	
4	394	13.27	51.1	
5	405	13.59	50.8	
6	429	21.41	75.6	
7	443	15.02	51.4	
8	459	19.96	65.9	
9	480	27.94	88.2	
10	584	606.28	1,573.4	
11	739	6.79	13.9	
12	943	4.34	7.0	
13	1,163	2.64	3.4	
14	10,380	75.00	10.9	Upper Marker

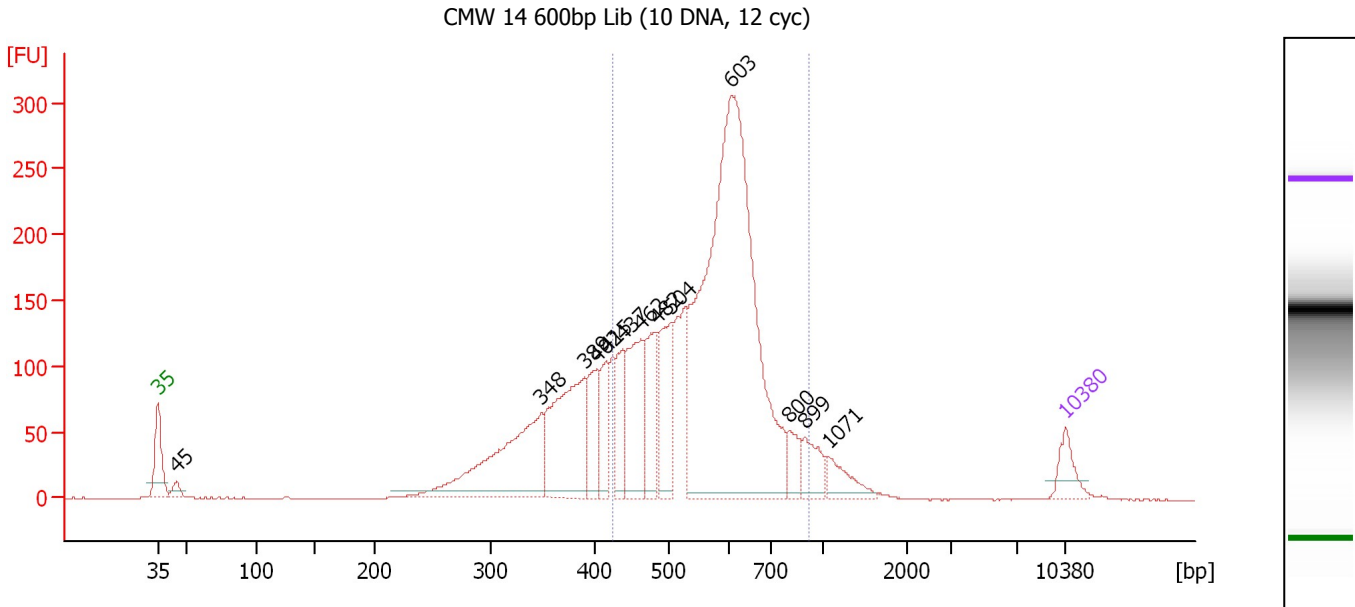
**Region table for sample 5 : CMW 13 600bp Lib (10 DNA, 12 cyc)**

From [bp]	To [bp]	Average Size [bp]	Molarity [pmol/l]	Conc. [pg/µl]	Corr. Area	% of Total	Size distribution in CV [%]	Color
458	795	578	1,756.7	664.29	777.2	78	8.7	Blue

Assay Class: High Sensitivity DNA Assay  
 Data Path: C:\...ents and Settings\Bioanalyzer\2012-05-24\2012-05-24\_001.xad

Created: 5/24/2012 9:23:17 AM  
 Modified: 5/24/2012 10:06:27 AM

**Electropherogram Summary Continued ...**



**Overall Results for sample 6 : CMW 14 600bp Lib (10 DNA, 12 cyc)**

Number of peaks found: 13                      Corr. Area 1: 2,577.7  
 Noise: 0.1

**Peak table for sample 6 : CMW 14 600bp Lib (10 DNA, 12 cyc)**

Peak	Size [bp]	Conc. [pg/μl]	Molarity [pmol/l]	Observations
1	35	125.00	5,411.3	Lower Marker
2	45	47.13	1,602.3	
3	348	674.29	2,932.0	
4	389	580.12	2,256.9	
5	402	190.00	716.3	
6	415	167.58	612.4	
7	437	180.48	625.2	
8	462	362.80	1,190.2	
9	482	232.71	731.4	
10	504	301.45	906.4	
11	603	2,332.55	5,860.7	
12	800	89.53	169.6	
13	899	113.98	192.0	
14	1,071	99.31	140.5	
15	10,380	75.00	10.9	Upper Marker

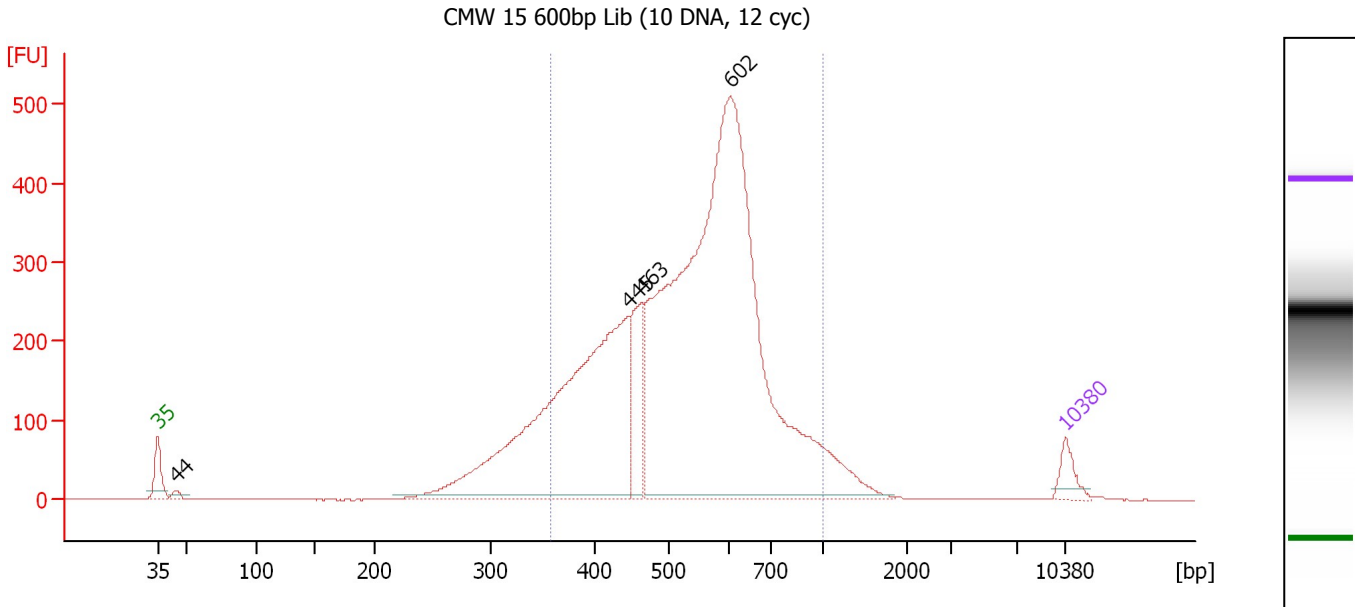
**Region table for sample 6 : CMW 14 600bp Lib (10 DNA, 12 cyc)**

From [bp]	To [bp]	Average Size [bp]	Molarity [pmol/l]	Conc. [pg/μl]	Corr. Area	% of Total	Size distribution in CV [%]	Color
423	926	574	10,948.0	4,013.69	2,577.7	68	16.6	Blue

Assay Class: High Sensitivity DNA Assay  
 Data Path: C:\...ents and Settings\Bioanalyzer\2012-05-24\2012-05-24\_001.xad

Created: 5/24/2012 9:23:17 AM  
 Modified: 5/24/2012 10:06:27 AM

**Electropherogram Summary Continued ...**



**Overall Results for sample 7 : CMW 15 600bp Lib (10 DNA, 12 cyc)**

Number of peaks found: 4                      Corr. Area 1: 6,004.1  
 Noise: 0.1

**Peak table for sample 7 : CMW 15 600bp Lib (10 DNA, 12 cyc)**

Peak	Size [bp]	Conc. [pg/μl]	Molarity [pmol/l]	Observations
1	35	125.00	5,411.3	Lower Marker
2	44	33.88	1,156.9	
3	445	2,501.72	8,520.9	
4	463	352.27	1,153.3	
5	602	4,624.16	11,647.8	
6	10,380	75.00	10.9	Upper Marker

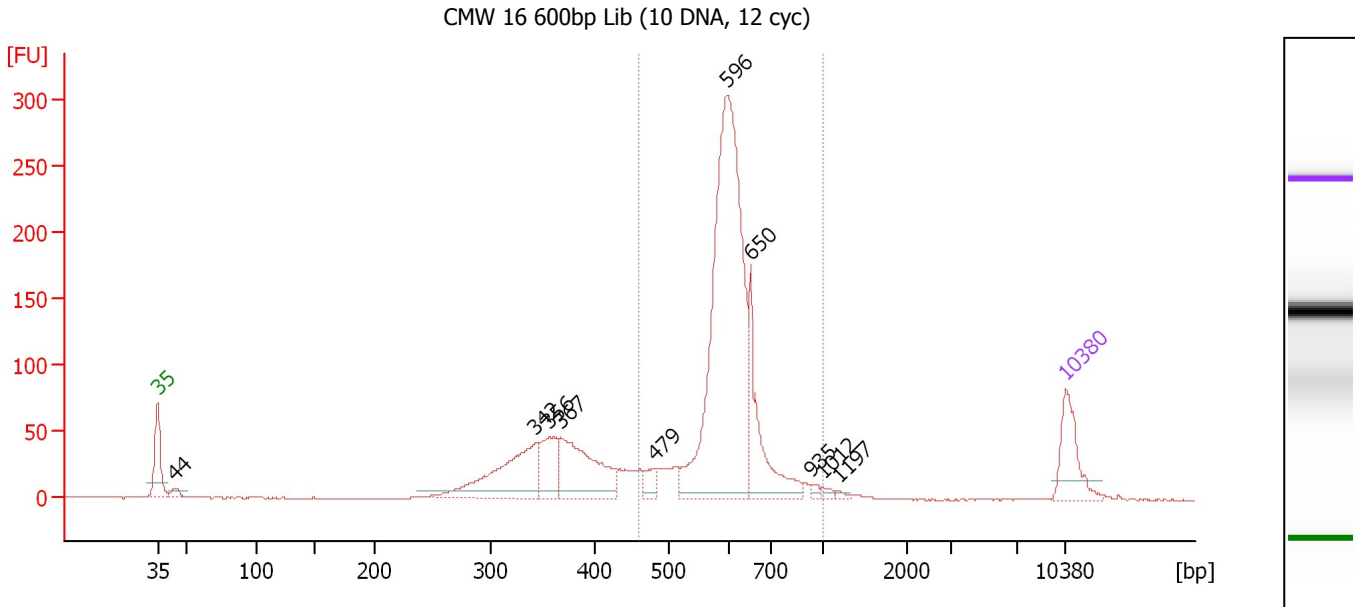
**Region table for sample 7 : CMW 15 600bp Lib (10 DNA, 12 cyc)**

From [bp]	To [bp]	Average Size [bp]	Molarity [pmol/l]	Conc. [pg/μl]	Corr. Area	% of Total	Size distribution in CV [%]	Color
357	1,000	546	20,172.5	6,829.44	6,004.1	86	22.0	Blue

Assay Class: High Sensitivity DNA Assay  
 Data Path: C:\...ents and Settings\Bioanalyzer\2012-05-24\2012-05-24\_001.xad

Created: 5/24/2012 9:23:17 AM  
 Modified: 5/24/2012 10:06:27 AM

**Electropherogram Summary Continued ...**



**Overall Results for sample 8 : CMW 16 600bp Lib (10 DNA, 12 cyc)**

Number of peaks found: 10                      Corr. Area 1: 1,213.1  
 Noise: 0.1

**Peak table for sample 8 : CMW 16 600bp Lib (10 DNA, 12 cyc)**

Peak	Size [bp]	Conc. [pg/µl]	Molarity [pmol/l]	Observations
1	35	125.00	5,411.3	Lower Marker
2	44	17.73	609.7	
3	342	224.52	995.1	
4	356	93.28	396.7	
5	367	208.04	860.0	
6	479	29.92	94.6	
7	596	825.15	2,098.4	
8	650	168.77	393.4	
9	935	8.07	13.1	
10	1,012	6.47	9.7	
11	1,197	4.72	6.0	
12	10,380	75.00	10.9	Upper Marker

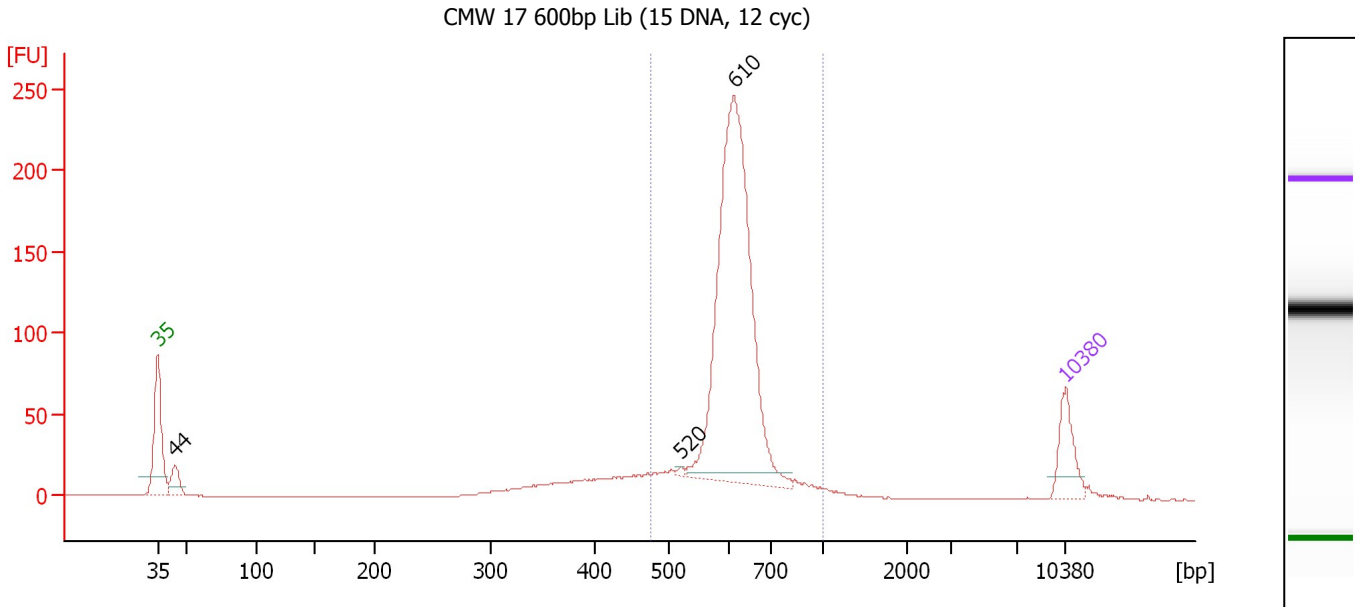
**Region table for sample 8 : CMW 16 600bp Lib (10 DNA, 12 cyc)**

From [bp]	To [bp]	Average Size [bp]	Molarity [pmol/l]	Conc. [pg/µl]	Corr. Area	% of Total	Size distribution in CV [%]	Color
460	1,000	608	2,796.8	1,107.31	1,213.1	66	11.7	Blue

Assay Class: High Sensitivity DNA Assay  
 Data Path: C:\...ents and Settings\Bioanalyzer\2012-05-24\2012-05-24\_001.xad

Created: 5/24/2012 9:23:17 AM  
 Modified: 5/24/2012 10:06:27 AM

**Electropherogram Summary Continued ...**



**Overall Results for sample 9 : CMW 17 600bp Lib (15 DNA, 12 cyc)**

Number of peaks found: 3                      Corr. Area 1: 976.0  
 Noise: 0.1

**Peak table for sample 9 : CMW 17 600bp Lib (15 DNA, 12 cyc)**

Peak	Size [bp]	Conc. [pg/μl]	Molarity [pmol/l]	Observations
1	35	125.00	5,411.3	Lower Marker
2	44	63.57	2,185.7	
3	520	4.68	13.6	
4	610	986.55	2,448.6	
5	10,380	75.00	10.9	Upper Marker

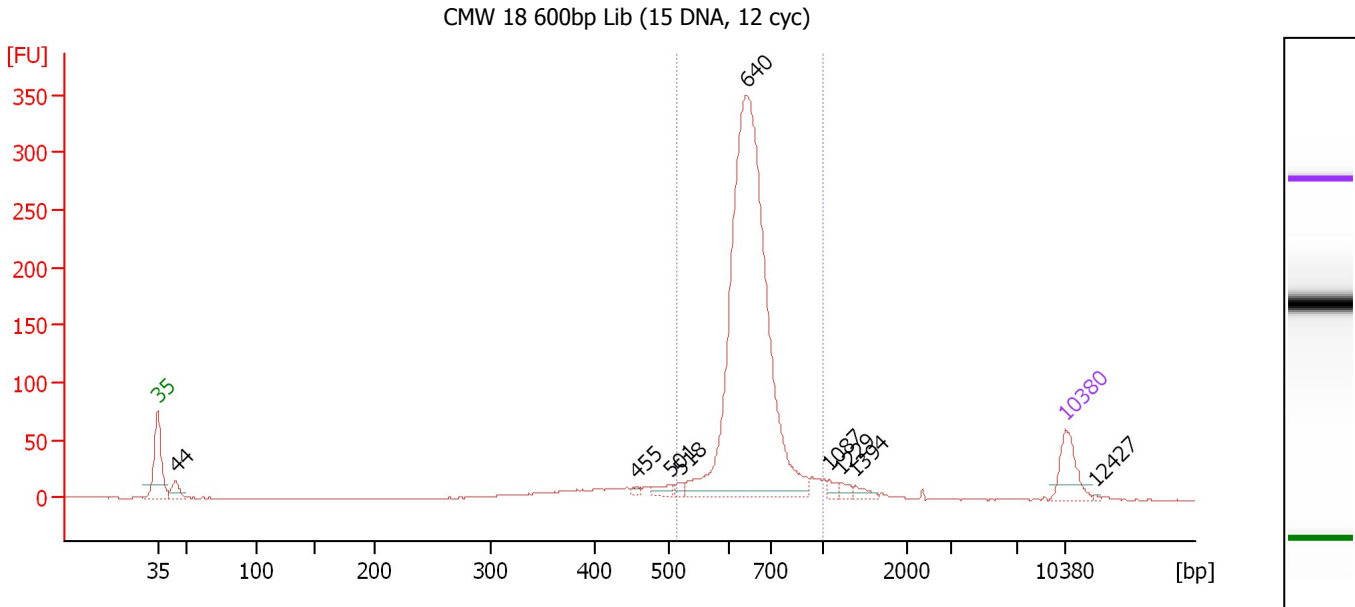
**Region table for sample 9 : CMW 17 600bp Lib (15 DNA, 12 cyc)**

From [bp]	To [bp]	Average Size [bp]	Molarity [pmol/l]	Conc. [pg/μl]	Corr. Area	% of Total	Size distribution in CV [%]	Color
475	1,000	618	3,005.2	1,211.95	976.0	81	10.6	Blue

Assay Class: High Sensitivity DNA Assay  
 Data Path: C:\...ents and Settings\Bioanalyzer\2012-05-24\2012-05-24\_001.xad

Created: 5/24/2012 9:23:17 AM  
 Modified: 5/24/2012 10:06:27 AM

**Electropherogram Summary Continued ...**



**Overall Results for sample 10 : CMW 18 600bp Lib (15 DNA, 12 cyc)**

Number of peaks found: 9                      Corr. Area 1: 1,330.8  
 Noise: 0.2

**Peak table for sample 10 : CMW 18 600bp Lib (15 DNA, 12 cyc)**

Peak	Size [bp]	Conc. [pg/μl]	Molarity [pmol/l]	Observations
1	35	125.00	5,411.3	Lower Marker
2	44	52.17	1,790.5	
3	455	8.57	28.5	
4	501	25.45	77.0	
5	518	13.52	39.6	
6	640	1,618.92	3,829.9	
7	1,087	15.01	20.9	
8	1,229	14.23	17.5	
9	1,394	16.64	18.1	
10	10,380	75.00	10.9	Upper Marker
11	12,427	0.00	0.0	

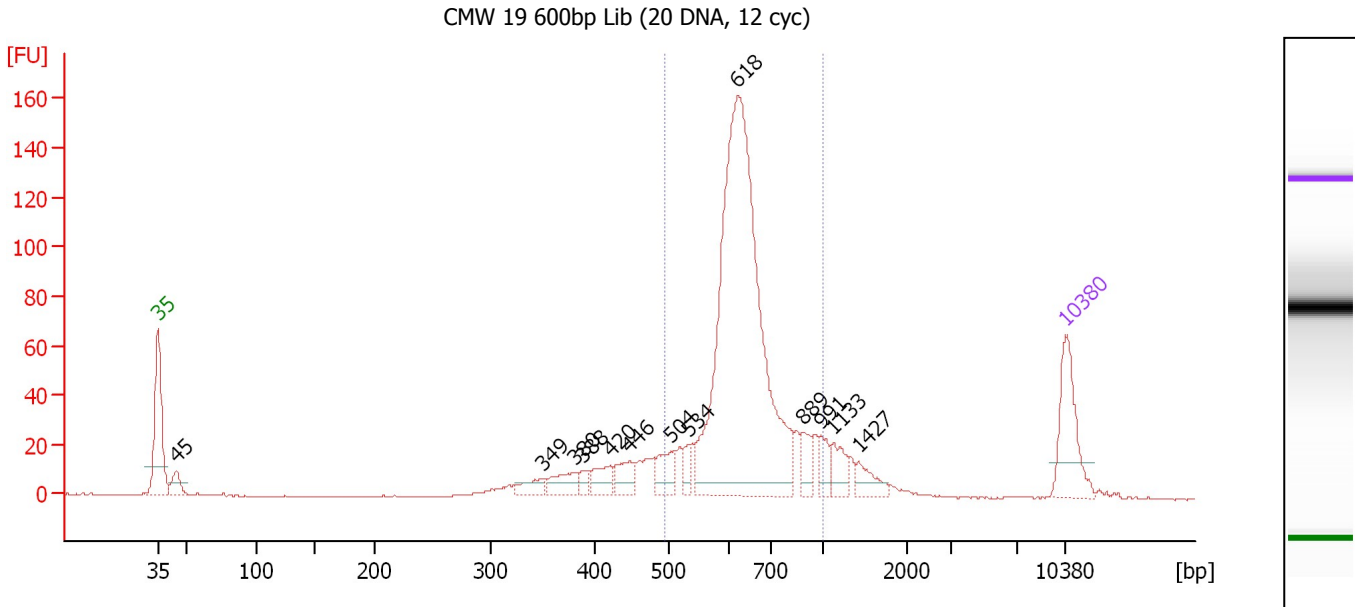
**Region table for sample 10 : CMW 18 600bp Lib (15 DNA, 12 cyc)**

From [bp]	To [bp]	Average Size [bp]	Molarity [pmol/l]	Conc. [pg/μl]	Corr. Area	% of Total	Size distribution in CV [%]	Color
513	1,000	657	3,917.3	1,682.76	1,330.8	84	10.5	Blue

Assay Class: High Sensitivity DNA Assay  
 Data Path: C:\...ents and Settings\Bioanalyzer\2012-05-24\2012-05-24\_001.xad

Created: 5/24/2012 9:23:17 AM  
 Modified: 5/24/2012 10:06:27 AM

**Electropherogram Summary Continued ...**



**Overall Results for sample 11 : CMW 19 600bp Lib (20 DNA, 12 cyc)**

Number of peaks found: 13                      Corr. Area 1: 781.7  
 Noise: 0.1

**Peak table for sample 11 : CMW 19 600bp Lib (20 DNA, 12 cyc)**

Peak	Size [bp]	Conc. [pg/µl]	Molarity [pmol/l]	Observations
1	35	125.00	5,411.3	Lower Marker
2	45	31.18	1,061.1	
3	349	24.08	104.5	
4	388	34.72	138.5	
5	388	10.92	42.6	
6	420	31.49	113.6	
7	446	34.16	116.0	
8	504	38.85	116.8	
9	534	18.90	53.6	
10	618	768.68	1,883.9	
11	889	26.60	45.3	
12	991	21.49	32.9	
13	1,133	28.96	38.7	
14	1,427	22.97	24.4	
15	10,380	75.00	10.9	Upper Marker

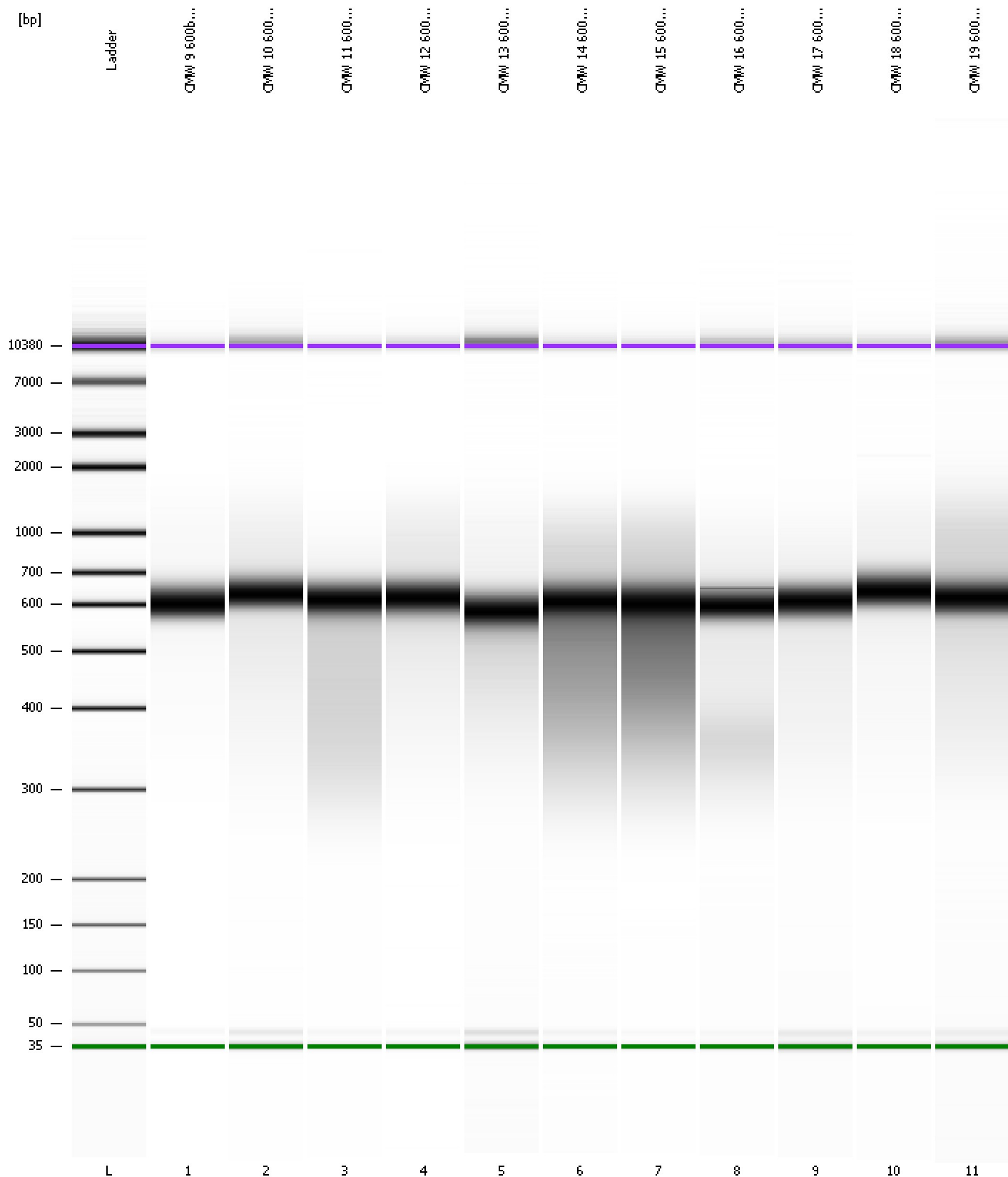
**Region table for sample 11 : CMW 19 600bp Lib (20 DNA, 12 cyc)**

From [bp]	To [bp]	Average Size [bp]	Molarity [pmol/l]	Conc. [pg/µl]	Corr. Area	% of Total	Size distribution in CV [%]	Color
494	1,000	649	2,179.4	914.58	781.7	72	15.1	Blue

Assay Class: High Sensitivity DNA Assay  
Data Path: C:\...ents and Settings\Bioanalyzer\2012-05-24\2012-05-24\_001.xad

Created: 5/24/2012 9:23:17 AM  
Modified: 5/24/2012 10:06:27 AM

**Gel Image**





Assay Class: High Sensitivity DNA Assay  
 Data Path: C:\...ents and Settings\Bioanalyzer\2012-05-24\2012-05-24\_001.xad

Created: 5/24/2012 9:23:17 AM  
 Modified: 5/24/2012 10:06:27 AM

**Run Logbook**

Description	Number	Source	Category	Sub Category	Time	Time Zone	User	Host
Run ended on port 1 (Number of wells acquired: 12)		Instrument	Run		5/24/2012 10:04:36 AM	(GMT --07:00) Pacific Standard Time	UC Davis	D8XSMGH1
Run started on port 1 (File: C:\Documents and Settings\Bioanalyzer\2012-05-24\2012-05-24_001.xad)		Instrument	Run		5/24/2012 9:23:23 AM	(GMT --07:00) Pacific Standard Time	UC Davis	D8XSMGH1
Product Number : G2938B		Instrument	Run		5/24/2012 9:23:23 AM	(GMT --07:00) Pacific Standard Time	UC Davis	D8XSMGH1
Name :		Instrument	Run		5/24/2012 9:23:23 AM	(GMT --07:00) Pacific Standard Time	UC Davis	D8XSMGH1
Vendor : Agilent Technologies		Instrument	Run		5/24/2012 9:23:23 AM	(GMT --07:00) Pacific Standard Time	UC Davis	D8XSMGH1
Serial# : DE13701086		Instrument	Run		5/24/2012 9:23:23 AM	(GMT --07:00) Pacific Standard Time	UC Davis	D8XSMGH1
Firmware : C.01.069		Instrument	Run		5/24/2012 9:23:23 AM	(GMT --07:00) Pacific Standard Time	UC Davis	D8XSMGH1
Cartridge : Electrode		Instrument	Run		5/24/2012 9:23:23 AM	(GMT --07:00) Pacific Standard Time	UC Davis	D8XSMGH1