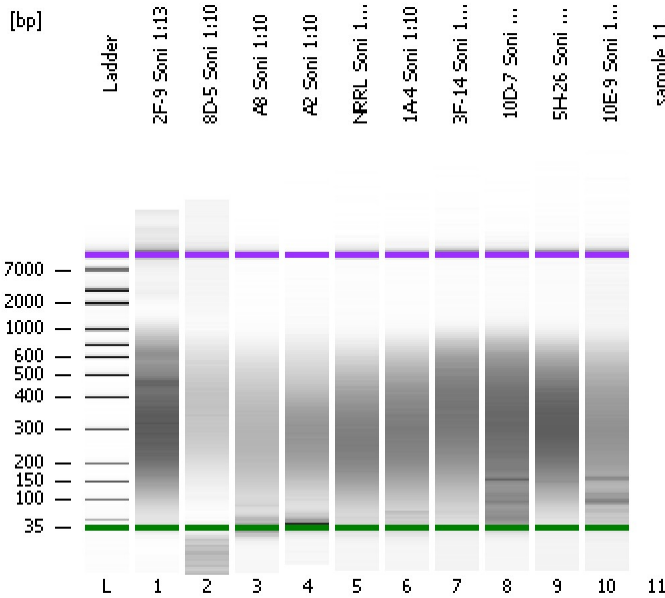


Assay Class: High Sensitivity DNA Assay
Data Path: C:\...ents and Settings\Bioanalyzer\2012-05-24\2012-05-24_002.xad

Created: 5/24/2012 10:26:30 AM
Modified: 5/24/2012 12:56:41 PM

Electrophoresis File Run Summary



Instrument Information:

Instrument Name: DE13701086 Firmware: C.01.069
Serial#: DE13701086 Type: G2938B

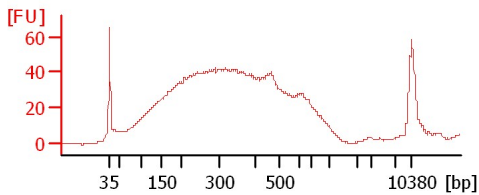
Assay Information:

Assay Origin Path: C:\Program Files\Agilent\2100 bioanalyzer\2100 expert\assays\dsDNA\High Sensitivity DNA.xsy
Assay Class: High Sensitivity DNA Assay
Version: 1.03
Assay Comments: Copyright © 2003-2010 Agilent Technologies

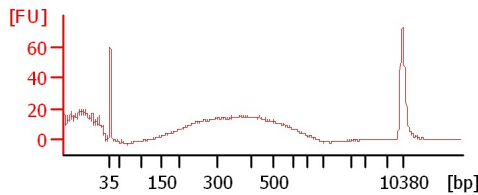
Chip Information:

Chip Lot #:
Reagent Kit Lot #:
Chip Comments:

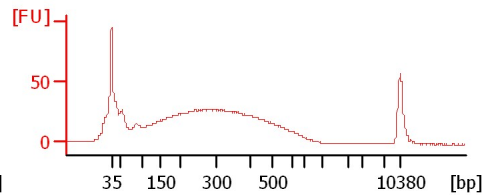
2F-9 Soni 1:13



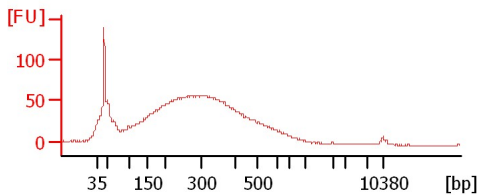
8D-5 Soni 1:10



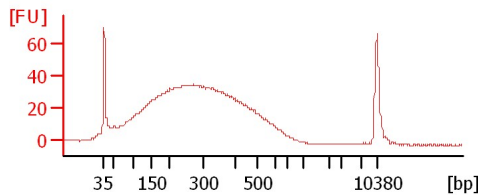
A8 Soni 1:10



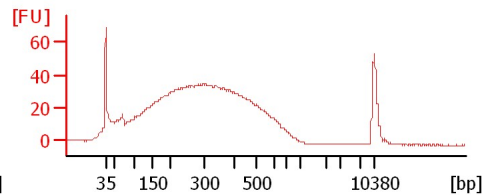
A2 Soni 1:10



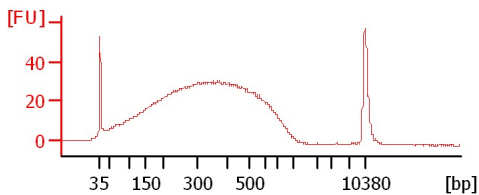
NRRL Soni 1:10



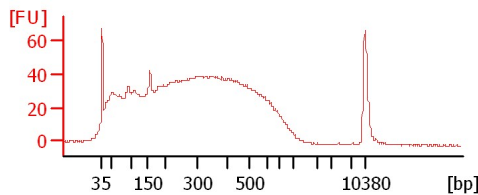
1A-4 Soni 1:10



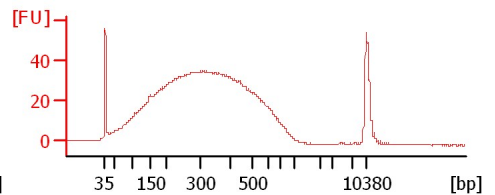
3F-14 Soni 1:10



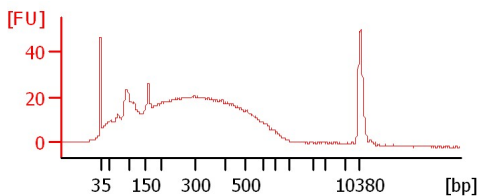
10D-7 Soni 1:10



5H-26 Soni 1:10



10E-9 Soni 1:10



Assay Class: High Sensitivity DNA Assay
Data Path: C:\...ents and Settings\Bioanalyzer\2012-05-24\2012-05-24_002.xad

Created: 5/24/2012 10:26:30 AM
Modified: 5/24/2012 12:56:41 PM

Electrophoresis File Run Summary (Chip Summary)

Sample Name	Sample Comment	Rest. Digest	Status	Observation	Result Label	Result Color
2F-9 Soni 1:13		<input type="checkbox"/>	✓			
8D-5 Soni 1:10		<input type="checkbox"/>	✓			
A8 Soni 1:10		<input type="checkbox"/>	✓			
A2 Soni 1:10		<input type="checkbox"/>	✓			
NRRL Soni 1:10		<input type="checkbox"/>	✓			
1A-4 Soni 1:10		<input type="checkbox"/>	✓			
3F-14 Soni 1:10		<input type="checkbox"/>	✓			
10D-7 Soni 1:10		<input type="checkbox"/>	✓			
5H-26 Soni 1:10		<input type="checkbox"/>	✓			
10E-9 Soni 1:10		<input type="checkbox"/>	✓			
sample 11		<input type="checkbox"/>	✓			
Ladder		<input type="checkbox"/>	✓			

Chip Lot #

Reagent Kit Lot #

Chip Comments :

Assay Class: High Sensitivity DNA Assay
Data Path: C:\...ents and Settings\Bioanalyzer\2012-05-24\2012-05-24_002.xad

Created: 5/24/2012 10:26:30 AM
Modified: 5/24/2012 12:56:41 PM

Electrophoresis Assay Details

General Analysis Settings

Number of Available Sample and Ladder Wells (Max.) : 12
Minimum Visible Range [s] : 32
Maximum Visible Range [s] : 138
Start Analysis Time Range [s] : 33
End Analysis Time Range [s] : 137.5
Ladder Concentration [pg/μl] : 1950
Uses Standard Area for Ladder Fragments
Lower Marker Concentration [pg/μl] : 125
Upper Marker Concentration [pg/μl] : 75
Used Upper Marker for Quantitation
Standard Curve Fit is Point to Point
Show Data Aligned to Lower and Upper Marker

Integrator Settings

Integration Start Time [s] : 33.05
Integration End Time [s] : 137
Slope Threshold : 0.8
Height Threshold [FU] : 5
Area Threshold : 0.1
Width Threshold [s] : 0.6
Baseline Plateau [s] : 0.5

Filter Settings

Filter Width [s] : 0.5
Polynomial Order : 4

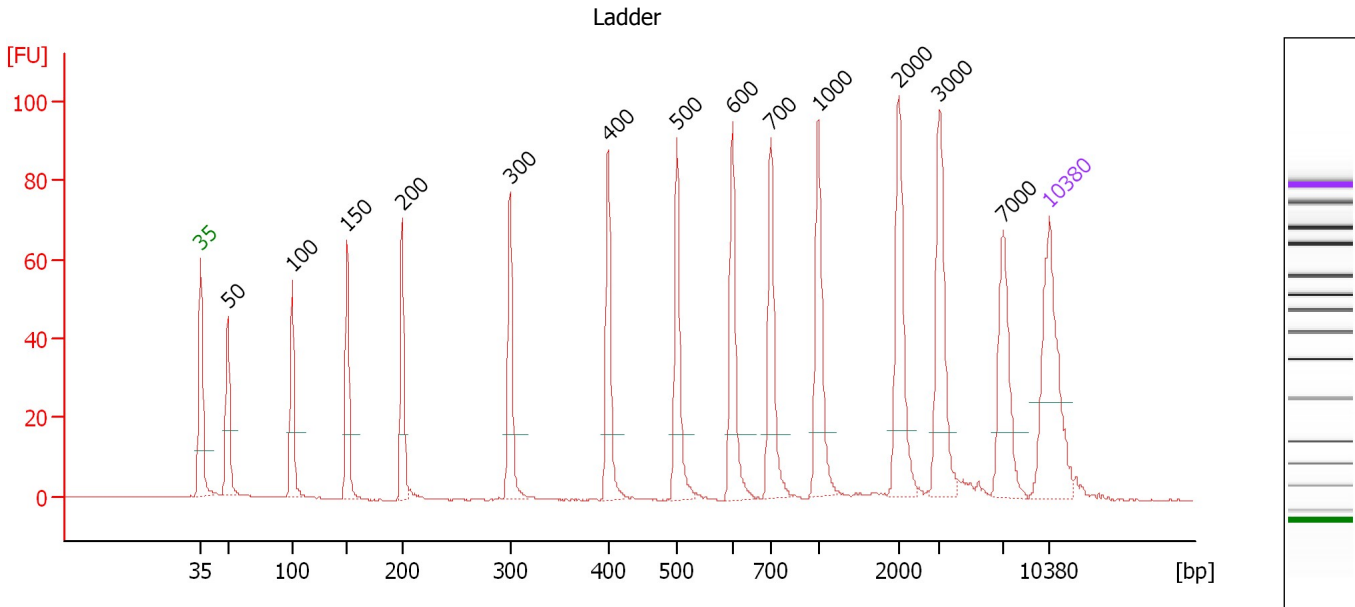
Ladder

Ladder Peak	Size	Area
1	35	160
2	50	210
3	100	208
4	150	221
5	200	242
6	300	270
7	400	305
8	500	306
9	600	336
10	700	321
11	1000	366
12	2000	413
13	3000	411
14	7000	400
15	10380	214

Assay Class: High Sensitivity DNA Assay
 Data Path: C:\...ents and Settings\Bioanalyzer\2012-05-24\2012-05-24_002.xad

Created: 5/24/2012 10:26:30 AM
 Modified: 5/24/2012 12:56:41 PM

Electropherogram Summary



Overall Results for Ladder

Noise: 0.1

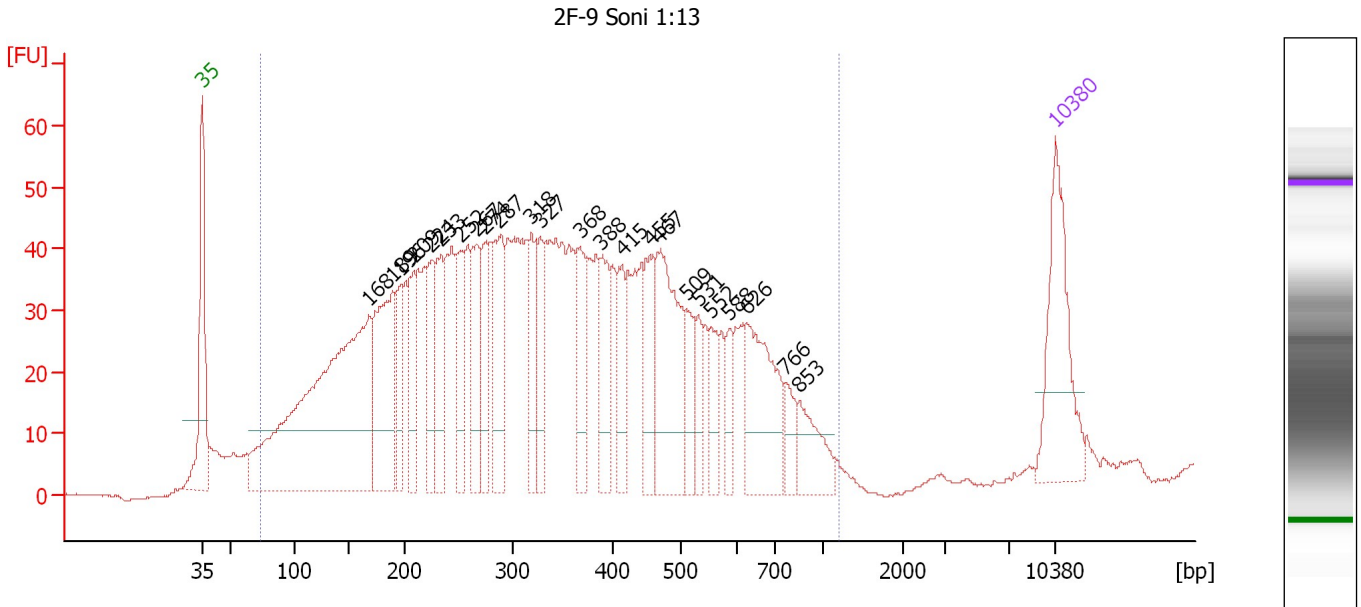
Peak table for Ladder

Peak	Size [bp]	Conc. [pg/μl]	Molarity [pmol/l]	Observations
1	35	125.00	5,411.3	Lower Marker
2	50	150.00	4,545.5	Ladder Peak
3	100	150.00	2,272.7	Ladder Peak
4	150	150.00	1,515.2	Ladder Peak
5	200	150.00	1,136.4	Ladder Peak
6	300	150.00	757.6	Ladder Peak
7	400	150.00	568.2	Ladder Peak
8	500	150.00	454.5	Ladder Peak
9	600	150.00	378.8	Ladder Peak
10	700	150.00	324.7	Ladder Peak
11	1,000	150.00	227.3	Ladder Peak
12	2,000	150.00	113.6	Ladder Peak
13	3,000	150.00	75.8	Ladder Peak
14	7,000	150.00	32.5	Ladder Peak
15	10,380	75.00	10.9	Upper Marker

Assay Class: High Sensitivity DNA Assay
 Data Path: C:\...ents and Settings\Bioanalyzer\2012-05-24\2012-05-24_002.xad

Created: 5/24/2012 10:26:30 AM
 Modified: 5/24/2012 12:56:41 PM

Electropherogram Summary Continued ...



Setpoint Deviations for sample 1 : 2F-9 Soni 1:13

Height Threshold [FU] : 10

Overall Results for sample 1 : 2F-9 Soni 1:13

Number of peaks found: 24 Corr. Area 1: 2,017.9
 Noise: 0.2

Peak table for sample 1 : 2F-9 Soni 1:13

Peak	Size [bp]	Conc. [pg/μl]	Molarity [pmol/l]	Observations
1	35	125.00	5,411.3	Lower Marker
2	168	482.68	4,365.7	
3	189	148.99	1,194.1	
4	196	49.15	379.5	
5	209	57.71	418.6	
6	224	58.90	398.1	
7	233	62.34	405.3	
8	252	53.47	321.8	
9	267	71.48	406.3	
10	274	52.11	287.7	
11	287	77.17	407.8	
12	318	54.85	261.0	
13	327	43.34	200.8	
14	368	60.74	250.3	
15	388	50.48	197.0	
16	415	41.83	152.8	
17	455	49.88	166.1	
18	467	125.58	407.2	
19	509	32.88	97.9	
20	531	22.17	63.2	
21	552	27.95	76.7	
22	588	19.09	49.2	

Assay Class: High Sensitivity DNA Assay
 Data Path: C:\...ents and Settings\Bioanalyzer\2012-05-24\2012-05-24_002.xad


Created: 5/24/2012 10:26:30 AM
 Modified: 5/24/2012 12:56:41 PM

Electropherogram Summary Continued ...

... Peak table for sample 1 : 2F-9 Soni 1:13

Peak	Size [bp]	Conc. [pg/μl]	Molarity [pmol/l]	Observations
23	626	93.10	225.3	
24	766	20.31	40.2	
25	853	37.58	66.8	
26	10,380	75.00	10.9	Upper Marker

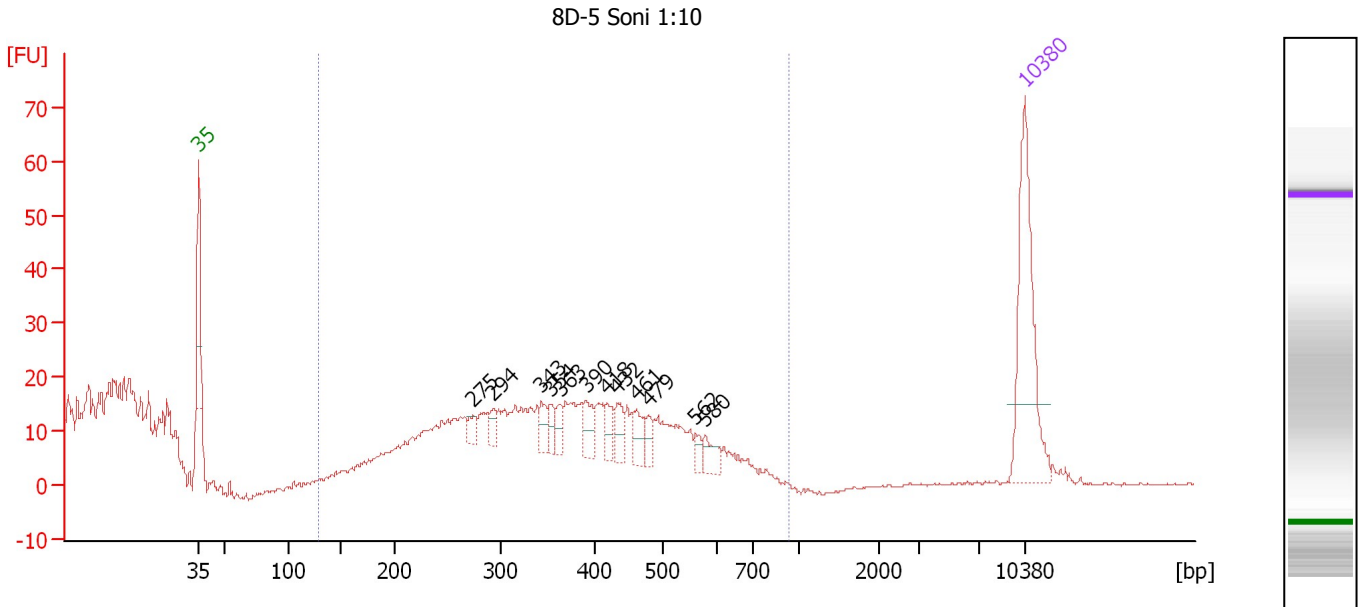
Region table for sample 1 : 2F-9 Soni 1:13

From [bp]	To [bp]	Average Size [bp]	Molarity [pmol/l]	Conc. [pg/μl]	Corr. Area	% of Total	Size distribution in CV [%]	Color
74	1,203	356	16,709.3	2,626.02	2,017.9	97	49.4	

Assay Class: High Sensitivity DNA Assay
 Data Path: C:\...ents and Settings\Bioanalyzer\2012-05-24\2012-05-24_002.xad

Created: 5/24/2012 10:26:30 AM
 Modified: 5/24/2012 12:56:41 PM

Electropherogram Summary Continued ...



Overall Results for sample 2 : 8D-5 Soni 1:10

Number of peaks found: 12 Corr. Area 1: 228.8
 Noise: 0.3

Peak table for sample 2 : 8D-5 Soni 1:10

Peak	Size [bp]	Conc. [pg/μl]	Molarity [pmol/l]	Observations
1	35	125.00	5,411.3	Lower Marker
2	275	8.11	44.7	
3	294	9.68	49.9	
4	343	12.37	54.6	
5	354	9.25	39.6	
6	363	10.70	44.7	
7	390	15.84	61.6	
8	418	11.74	42.5	
9	432	14.10	49.5	
10	461	14.39	47.2	
11	479	8.69	27.5	
12	562	6.57	17.7	
13	580	11.83	30.9	
14	10,380	75.00	10.9	Upper Marker

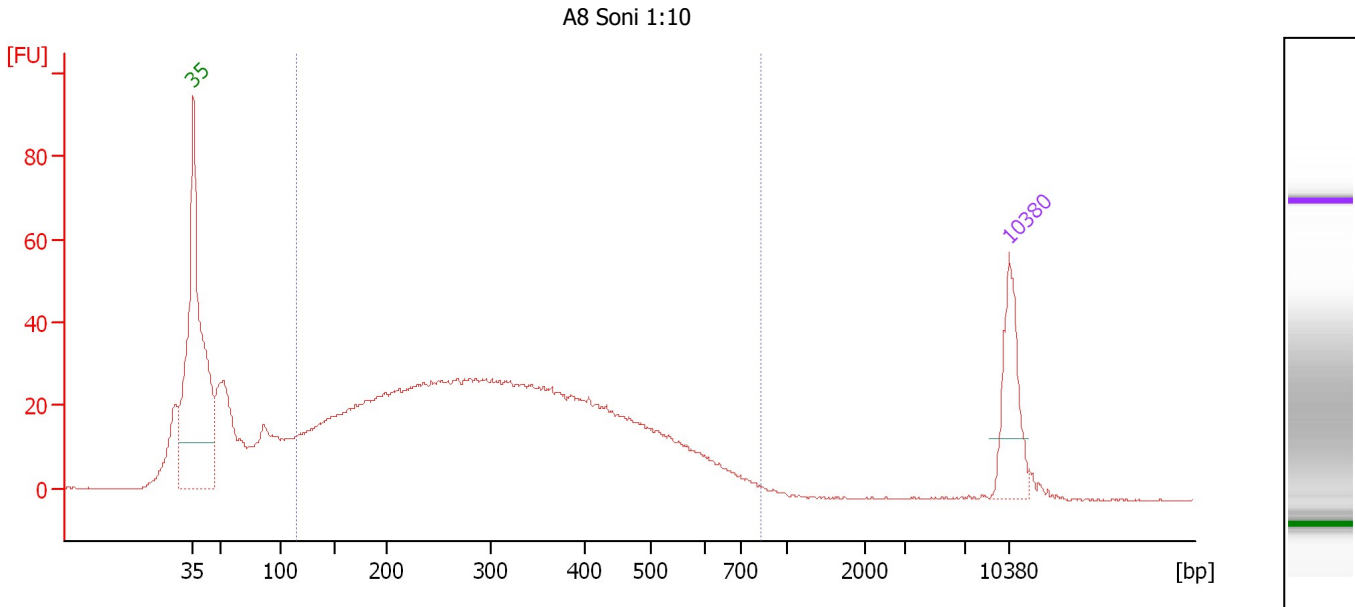
Region table for sample 2 : 8D-5 Soni 1:10

From [bp]	To [bp]	Average Size [bp]	Molarity [pmol/l]	Conc. [pg/μl]	Corr. Area	% of Total	Size distribution in CV [%]	Color
128	926	389	1,223.6	288.15	228.8	69	24.2	Blue

Assay Class: High Sensitivity DNA Assay
 Data Path: C:\...ents and Settings\Bioanalyzer\2012-05-24\2012-05-24_002.xad

Created: 5/24/2012 10:26:30 AM
 Modified: 5/24/2012 12:56:41 PM

Electropherogram Summary Continued ...



Setpoint Deviations for sample 3 : A8 Soni 1:10

Height Threshold [FU] : 50

Overall Results for sample 3 : A8 Soni 1:10

Number of peaks found: 0 Corr. Area 1: 1,175.6
 Noise: 0.2

Peak table for sample 3 : A8 Soni 1:10

Peak	Size [bp]	Conc. [pg/μl]	Molarity [pmol/l]	Observations
1	35	125.00	5,411.3	Lower Marker
2	10,380	75.00	10.9	Upper Marker

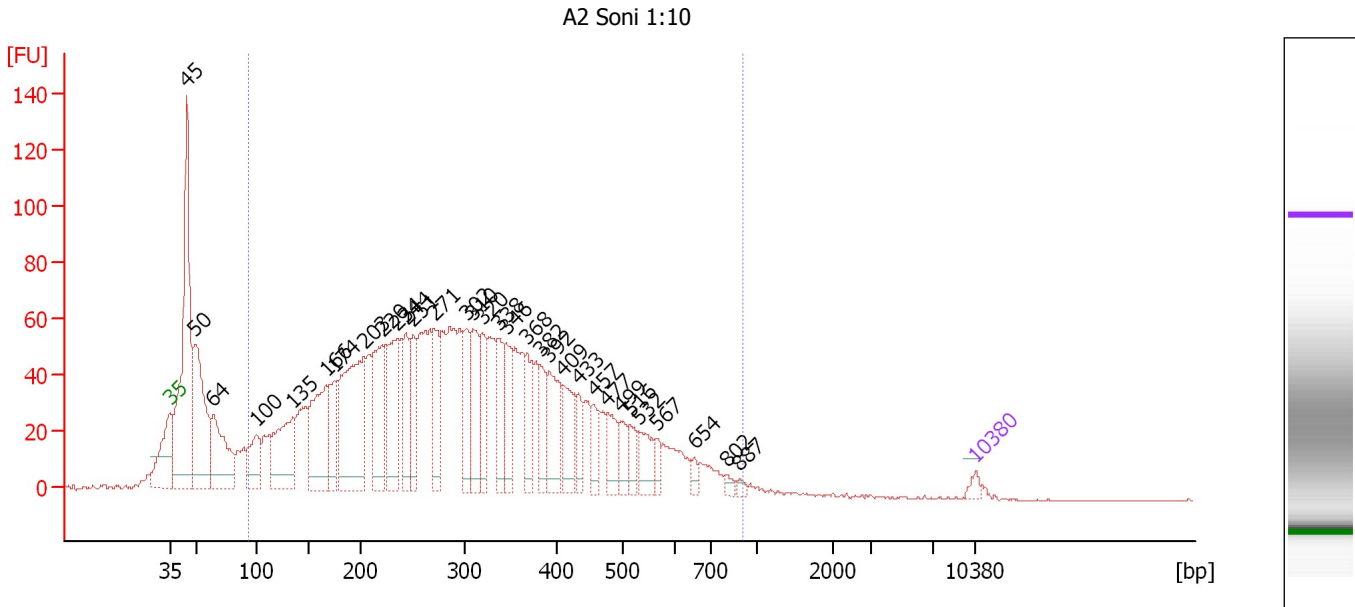
Region table for sample 3 : A8 Soni 1:10

From [bp]	To [bp]	Average Size [bp]	Molarity [pmol/l]	Conc. [pg/μl]	Corr. Area	% of Total	Size distribution in CV [%]	Color
115	827	323	11,155.8	1,825.20	1,175.6	80	40.7	Blue

Assay Class: High Sensitivity DNA Assay
 Data Path: C:\...ents and Settings\Bioanalyzer\2012-05-24\2012-05-24_002.xad

Created: 5/24/2012 10:26:30 AM
 Modified: 5/24/2012 12:56:41 PM

Electropherogram Summary Continued ...



Overall Results for sample 4 : A2 Soni 1:10

Number of peaks found: 32 Corr. Area 1: 2,377.9
 Noise: 0.2

Peak table for sample 4 : A2 Soni 1:10


Peak	Size [bp]	Conc. [pg/μl]	Molarity [pmol/l]	Observations
1	35	125.00	5,411.3	Lower Marker
2	45	4,628.07	157,223.4	
3	50	2,681.32	81,980.9	
4	64	1,581.32	37,269.6	
5	100	831.91	12,566.3	
6	135	1,629.95	18,284.9	
7	166	1,773.35	16,177.6	
8	174	794.18	6,908.1	
9	203	2,805.53	20,980.2	
10	220	1,521.15	10,485.2	
11	234	1,530.07	9,890.0	
12	244	926.35	5,757.2	
13	251	789.02	4,771.1	
14	271	780.14	4,363.4	
15	302	728.73	3,651.5	
16	310	981.46	4,790.8	
17	320	677.99	3,209.0	
18	338	676.50	3,033.8	
19	346	730.80	3,196.1	
20	368	595.09	2,452.7	
21	382	465.23	1,842.9	
22	392	871.31	3,370.7	
23	409	705.55	2,611.7	
24	433	334.73	1,171.3	
25	457	316.66	1,050.6	
26	477	457.16	1,451.9	

Assay Class: High Sensitivity DNA Assay
 Data Path: C:\...ents and Settings\Bioanalyzer\2012-05-24\2012-05-24_002.xad

Created: 5/24/2012 10:26:30 AM
 Modified: 5/24/2012 12:56:41 PM

Electropherogram Summary Continued ...

... Peak table for sample 4 : A2 Soni 1:10

Peak	Size [bp]	Conc. [pg/μl]	Molarity [pmol/l]	Observations
27	499	307.90	934.7	
28	516	278.50	817.6	
29	532	413.24	1,176.2	
30	567	160.74	429.8	
31	654	100.82	233.5	
32	802	75.98	143.5	
33	887	54.81	93.6	
34	 10,380	75.00	10.9	Upper Marker

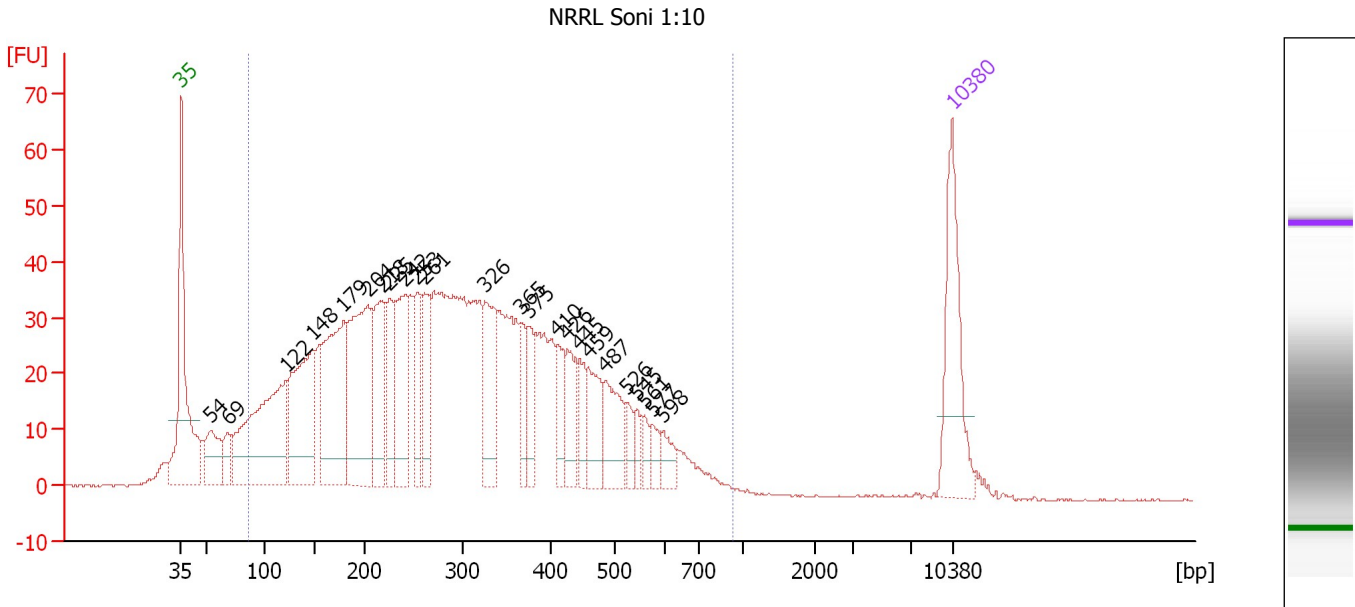
Region table for sample 4 : A2 Soni 1:10

From [bp]	To [bp]	Average Size [bp]	Molarity [pmol/l]	Conc. [pg/μl]	Corr. Area	% of Total	Size distribution in CV [%]	Color
94	909	317	210,947.7	33,259.17	2,377.9	81	42.4	

Assay Class: High Sensitivity DNA Assay
 Data Path: C:\...ents and Settings\Bioanalyzer\2012-05-24\2012-05-24_002.xad

Created: 5/24/2012 10:26:30 AM
 Modified: 5/24/2012 12:56:41 PM

Electropherogram Summary Continued ...



Overall Results for sample 5 : NRRL Soni 1:10

Number of peaks found: 24 Corr. Area 1: 1,572.8
 Noise: 0.1

Peak table for sample 5 : NRRL Soni 1:10

Peak	Size [bp]	Conc. [pg/μl]	Molarity [pmol/l]	Observations
1	35	125.00	5,411.3	Lower Marker
2	54	52.87	1,484.3	
3	69	26.93	594.6	
4	122	235.10	2,914.8	
5	148	174.87	1,785.6	
6	179	178.11	1,507.0	
7	204	185.24	1,379.1	
8	218	88.35	615.0	
9	225	68.23	458.8	
10	242	90.00	564.3	
11	253	50.50	302.3	
12	261	53.06	307.7	
13	326	82.42	383.5	
14	365	32.52	135.0	
15	375	38.18	154.2	
16	410	33.48	123.8	
17	426	40.62	144.4	
18	445	25.62	87.2	
19	459	47.31	156.3	
20	487	51.24	159.5	
21	526	14.48	41.7	
22	545	12.22	34.0	
23	561	12.39	33.5	
24	577	13.42	35.3	
25	598	16.90	42.8	
26	10,380	75.00	10.9	Upper Marker

Assay Class: High Sensitivity DNA Assay
Data Path: C:\...ents and Settings\Bioanalyzer\2012-05-24\2012-05-24_002.xad

Created: 5/24/2012 10:26:30 AM
Modified: 5/24/2012 12:56:41 PM

Electropherogram Summary Continued ...

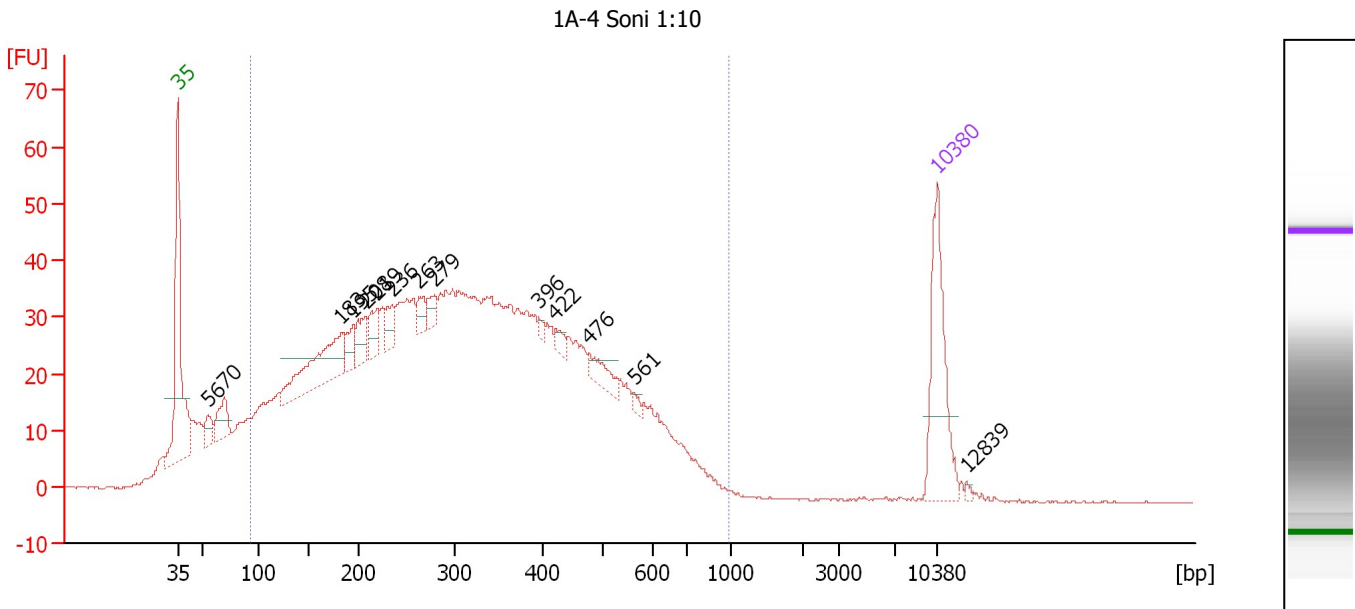
... Region table for sample 5 : NRRL Soni 1:10

From [bp]	To [bp]	Average Size [bp]	Molarity [pmol/l]	Conc. [pg/μl]	Corr. Area	% of Total	Size distribution in CV [%]	Color
87	933	308	15,516.9	2,281.11	1,572.8	93	44.2	■

Assay Class: High Sensitivity DNA Assay
 Data Path: C:\...ents and Settings\Bioanalyzer\2012-05-24\2012-05-24_002.xad

Created: 5/24/2012 10:26:30 AM
 Modified: 5/24/2012 12:56:41 PM

Electropherogram Summary Continued ...



Setpoint Deviations for sample 6 : 1A-4 Soni 1:10

Height Threshold [FU] : 3

Overall Results for sample 6 : 1A-4 Soni 1:10

Number of peaks found: 14 Corr. Area 1: 1,586.9
 Noise: 0.1

Peak table for sample 6 : 1A-4 Soni 1:10

Peak	Size [bp]	Conc. [pg/µl]	Molarity [pmol/l]	Observations
1	35	125.00	5,411.3	Lower Marker
2	56	20.17	548.3	
3	70	35.29	761.8	
4	183	105.45	872.3	
5	195	19.65	152.7	
6	208	27.81	202.4	
7	219	25.74	178.0	
8	236	19.38	124.5	
9	263	14.55	83.7	
10	279	12.98	70.4	
11	396	4.07	15.5	
12	422	8.84	31.8	
13	476	19.76	62.8	
14	561	3.80	10.3	
15	10,380	75.00	10.9	Upper Marker
16	12,839	0.00	0.0	

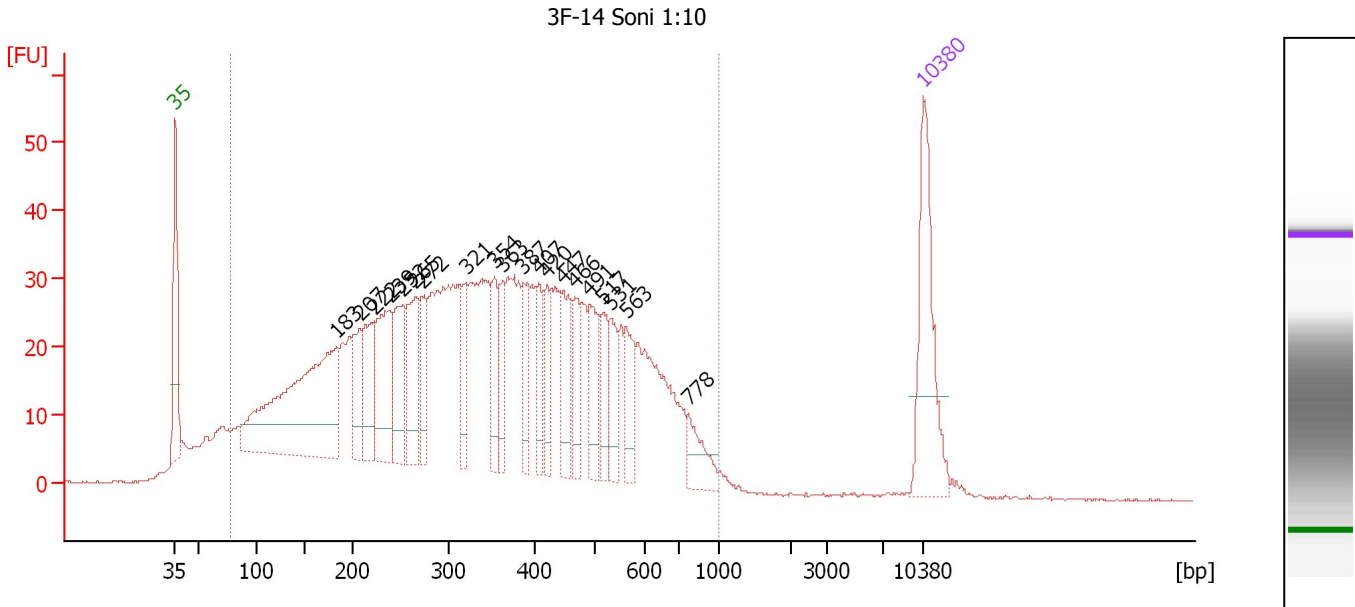
Region table for sample 6 : 1A-4 Soni 1:10

From [bp]	To [bp]	Average Size [bp]	Molarity [pmol/l]	Conc. [pg/µl]	Corr. Area	% of Total	Size distribution in CV [%]	Color
93	985	328	17,594.8	2,757.50	1,586.9	90	44.1	Blue

Assay Class: High Sensitivity DNA Assay
 Data Path: C:\...ents and Settings\Bioanalyzer\2012-05-24\2012-05-24_002.xad

Created: 5/24/2012 10:26:30 AM
 Modified: 5/24/2012 12:56:41 PM

Electropherogram Summary Continued ...



Overall Results for sample 7 : 3F-14 Soni 1:10

Number of peaks found: 20 Corr. Area 1: 1,462.6
 Noise: 0.1

Peak table for sample 7 : 3F-14 Soni 1:10

Peak	Size [bp]	Conc. [pg/μl]	Molarity [pmol/l]	Observations
1	35	125.00	5,411.3	Lower Marker
2	183	275.63	2,276.3	
3	207	50.62	370.3	
4	222	59.98	409.9	
5	239	90.76	576.5	
6	252	66.81	401.7	
7	265	70.67	404.2	
8	272	38.74	215.6	
9	321	37.88	179.0	
10	354	35.88	153.6	
11	363	35.10	146.4	
12	387	35.97	141.0	
13	407	34.44	128.1	
14	420	31.40	113.1	
15	447	43.88	148.8	
16	466	33.54	109.0	
17	491	43.65	134.7	
18	517	27.45	80.5	
19	531	31.29	89.3	
20	563	34.26	92.2	
21	778	25.52	49.7	
22	10,380	75.00	10.9	Upper Marker

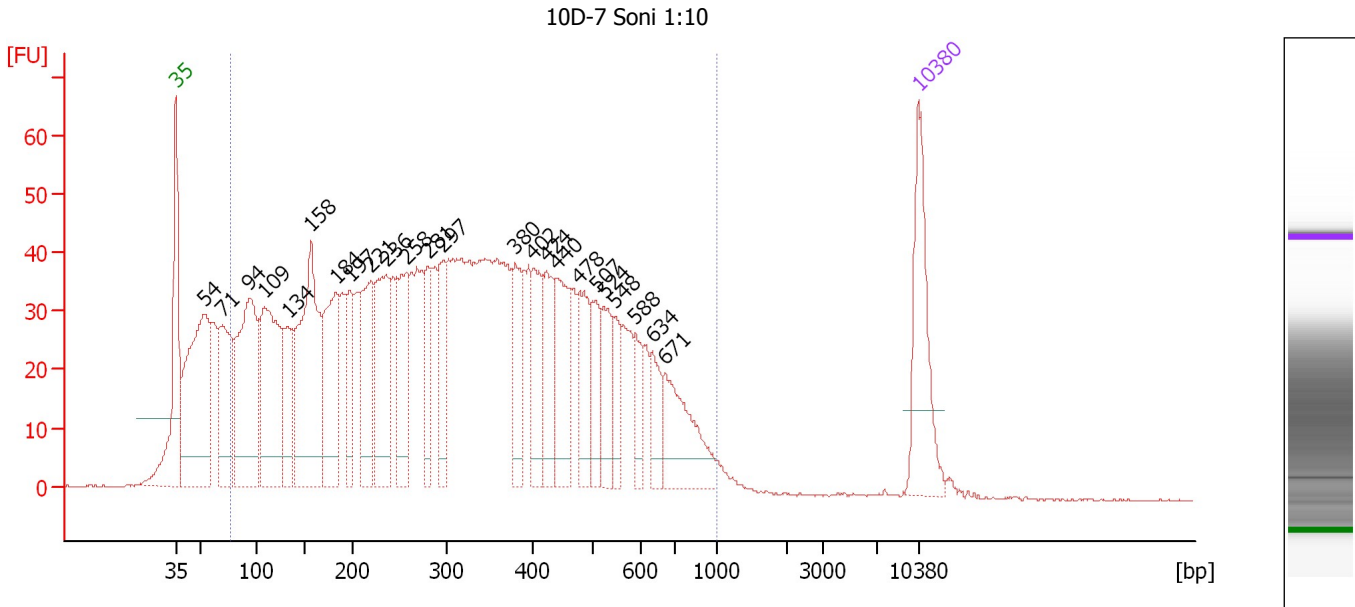
Region table for sample 7 : 3F-14 Soni 1:10

From [bp]	To [bp]	Average Size [bp]	Molarity [pmol/l]	Conc. [pg/μl]	Corr. Area	% of Total	Size distribution in CV [%]	Color
77	1,000	361	13,990.6	2,250.30	1,462.6	94	46.0	Blue

Assay Class: High Sensitivity DNA Assay
 Data Path: C:\...ents and Settings\Bioanalyzer\2012-05-24\2012-05-24_002.xad

Created: 5/24/2012 10:26:30 AM
 Modified: 5/24/2012 12:56:41 PM

Electropherogram Summary Continued ...



Overall Results for sample 8 : 10D-7 Soni 1:10

Number of peaks found: 24 Corr. Area 1: 2,151.1
 Noise: 0.2

Peak table for sample 8 : 10D-7 Soni 1:10

Peak	Size [bp]	Conc. [pg/μl]	Molarity [pmol/l]	Observations
1	35	125.00	5,411.3	Lower Marker
2	54	276.52	7,760.0	
3	71	136.65	2,930.3	
4	94	241.25	3,869.2	
5	109	212.90	2,956.9	
6	134	79.38	900.9	
7	158	249.24	2,392.5	
8	184	131.25	1,082.7	
9	197	56.97	437.2	
10	221	102.03	701.0	
11	236	119.50	767.8	
12	258	90.07	529.2	
13	281	51.99	280.2	
14	297	63.31	323.1	
15	380	60.30	240.2	
16	402	59.67	224.7	
17	424	60.50	216.4	
18	440	76.74	264.0	
19	478	60.04	190.5	
20	507	42.04	125.5	
21	524	48.13	139.2	
22	548	28.06	77.6	
23	588	29.98	77.3	
24	634	30.60	73.1	
25	671	81.25	183.5	
26	10,380	75.00	10.9	Upper Marker

Assay Class: High Sensitivity DNA Assay
Data Path: C:\...ents and Settings\Bioanalyzer\2012-05-24\2012-05-24_002.xad

Created: 5/24/2012 10:26:30 AM
Modified: 5/24/2012 12:56:41 PM

Electropherogram Summary Continued ...

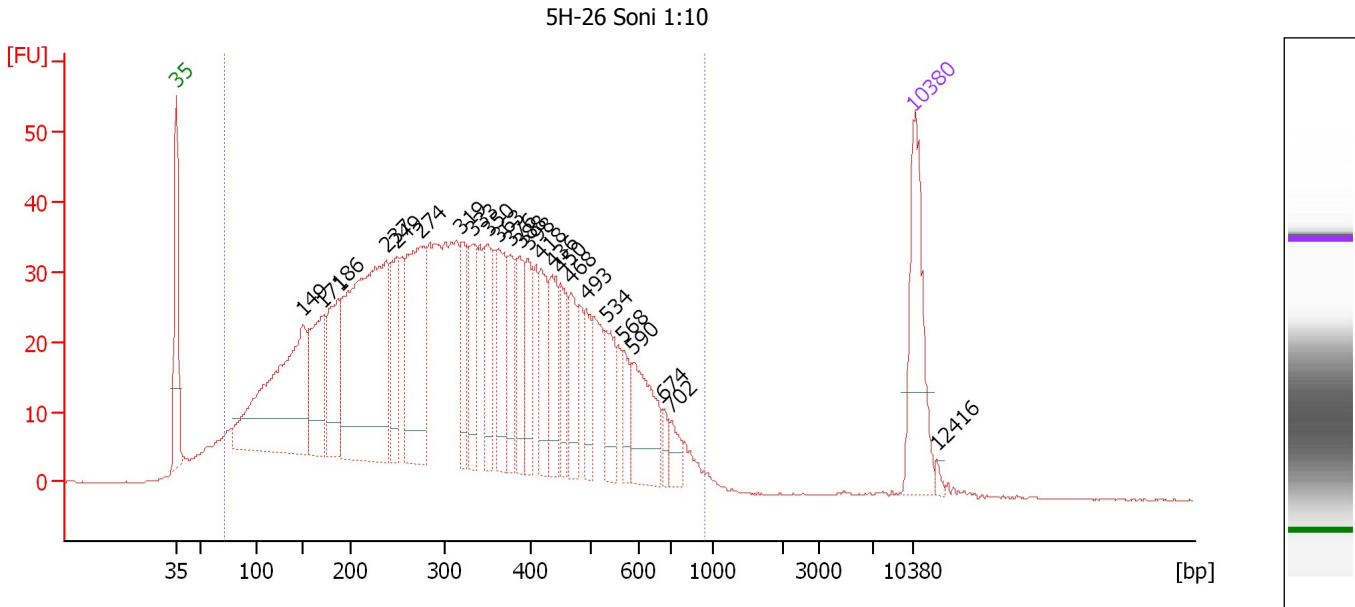
... Region table for sample 8 : 10D-7 Soni 1:10

From [bp]	To [bp]	Average Size [bp]	Molarity [pmol/l]	Conc. [pg/μl]	Corr. Area	% of Total	Size distribution in CV [%]	Color
77	1,000	338	22,272.3	3,090.10	2,151.1	88	51.6	■

Assay Class: High Sensitivity DNA Assay
 Data Path: C:\...ents and Settings\Bioanalyzer\2012-05-24\2012-05-24_002.xad

Created: 5/24/2012 10:26:30 AM
 Modified: 5/24/2012 12:56:41 PM

Electropherogram Summary Continued ...



Overall Results for sample 9 : 5H-26 Soni 1:10

Number of peaks found: 24 Corr. Area 1: 1,620.7
 Noise: 0.1

Peak table for sample 9 : 5H-26 Soni 1:10

Peak	Size [bp]	Conc. [pg/μl]	Molarity [pmol/l]	Observations
1	35	125.00	5,411.3	Lower Marker
2	149	278.53	2,834.6	
3	171	107.16	949.4	
4	186	97.79	796.8	
5	237	340.96	2,181.1	
6	249	69.65	424.1	
7	274	162.38	898.3	
8	319	49.98	237.5	
9	333	55.52	252.4	
10	350	53.32	230.7	
11	363	71.20	297.5	
12	376	42.06	169.3	
13	388	43.84	171.3	
14	398	39.17	149.2	
15	418	50.74	183.8	
16	436	48.89	169.9	
17	450	38.61	129.9	
18	468	41.16	133.2	
19	493	32.84	100.9	
20	534	43.48	123.5	
21	568	26.81	71.5	
22	590	65.04	167.0	
23	674	10.78	24.3	
24	702	15.52	33.5	
25	10,380	75.00	10.9	Upper Marker
26	12,416	0.00	0.0	

Assay Class: High Sensitivity DNA Assay
Data Path: C:\...ents and Settings\Bioanalyzer\2012-05-24\2012-05-24_002.xad

Created: 5/24/2012 10:26:30 AM
Modified: 5/24/2012 12:56:41 PM

Electropherogram Summary Continued ...

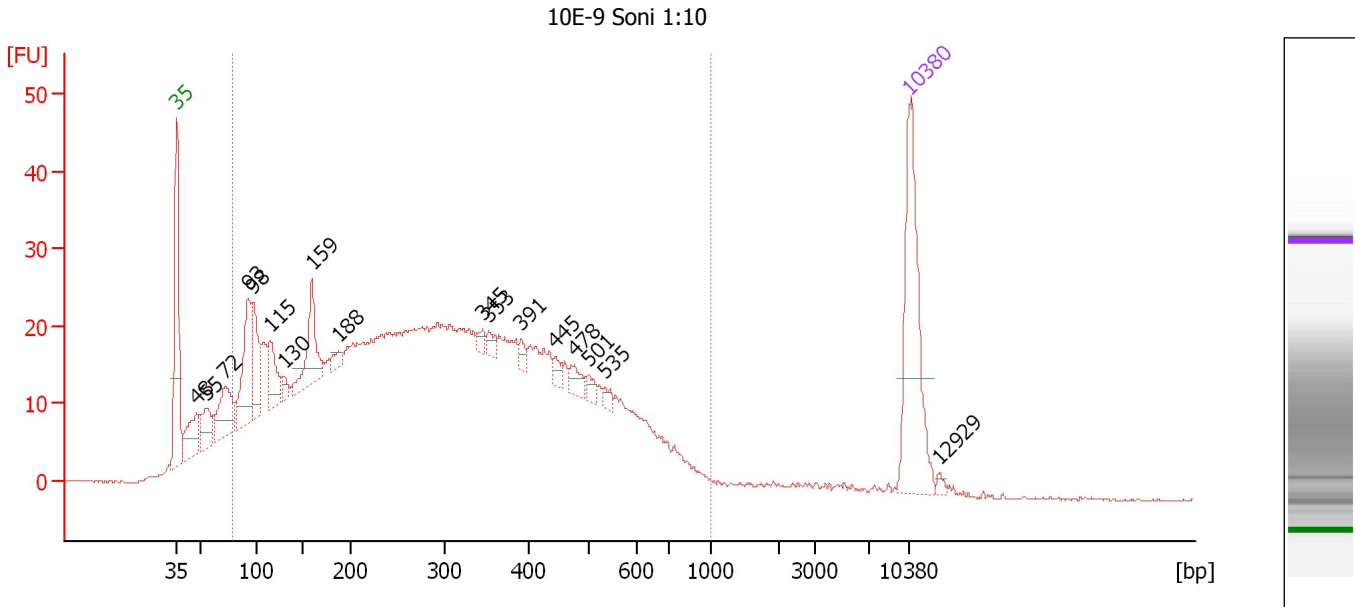
... Region table for sample 9 : 5H-26 Soni 1:10

From [bp]	To [bp]	Average Size [bp]	Molarity [pmol/l]	Conc. [pg/μl]	Corr. Area	% of Total	Size distribution in CV [%]	Color
71	942	335	18,430.4	2,805.42	1,620.7	97	45.3	■

Assay Class: High Sensitivity DNA Assay
 Data Path: C:\...ents and Settings\Bioanalyzer\2012-05-24\2012-05-24_002.xad

Created: 5/24/2012 10:26:30 AM
 Modified: 5/24/2012 12:56:41 PM

Electropherogram Summary Continued ...



Setpoint Deviations for sample 10 : 10E-9 Soni 1:10

Height Threshold [FU] : 2

Overall Results for sample 10 : 10E-9 Soni 1:10

Number of peaks found: 17 Corr. Area 1: 1,074.2
 Noise: 0.1

Peak table for sample 10 : 10E-9 Soni 1:10

Peak	Size [bp]	Conc. [pg/μl]	Molarity [pmol/l]	Observations
1	35	125.00	5,411.3	Lower Marker
2	48	37.04	1,179.1	
3	55	26.52	726.8	
4	72	45.44	953.9	
5	93	70.25	1,139.6	
6	98	45.99	713.0	
7	115	34.94	461.1	
8	130	7.58	88.4	
9	159	51.11	486.7	
10	188	8.02	64.8	
11	345	5.09	22.3	
12	353	5.88	25.2	
13	391	5.93	23.0	
14	445	5.79	19.7	
15	478	9.37	29.7	
16	501	5.64	17.1	
17	535	4.10	11.6	
18	10,380	75.00	10.9	Upper Marker
19	12,929	0.00	0.0	

Assay Class: High Sensitivity DNA Assay
Data Path: C:\...ents and Settings\Bioanalyzer\2012-05-24\2012-05-24_002.xad

Created: 5/24/2012 10:26:30 AM
Modified: 5/24/2012 12:56:41 PM

Electropherogram Summary Continued ...

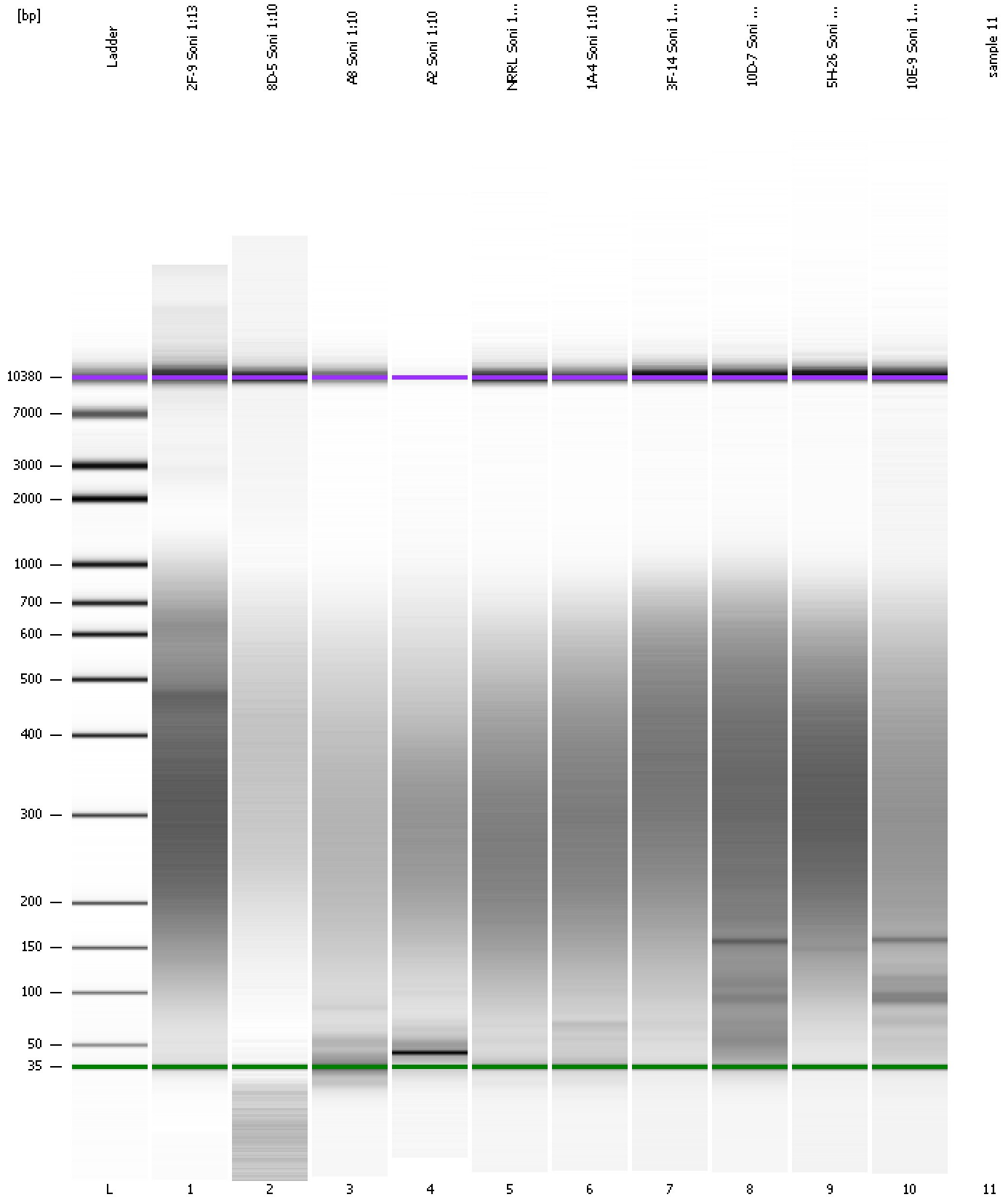
... Region table for sample 10 : 10E-9 Soni 1:10

From [bp]	To [bp]	Average Size [bp]	Molarity [pmol/l]	Conc. [pg/μl]	Corr. Area	% of Total	Size distribution in CV [%]	Color
79	1,000	317	15,064.0	2,017.33	1,074.2	89	50.9	■

Assay Class: High Sensitivity DNA Assay
Data Path: C:\...ents and Settings\Bioanalyzer\2012-05-24\2012-05-24_002.xad

Created: 5/24/2012 10:26:30 AM
Modified: 5/24/2012 12:56:41 PM

Gel Image



Assay Class: High Sensitivity DNA Assay
Data Path: C:\...ents and Settings\Bioanalyzer\2012-05-24\2012-05-24_002.xad

Created: 5/24/2012 10:26:30 AM
Modified: 5/24/2012 12:56:41 PM

Invalid Samples

Sample 11 has not been run, no results available.

Assay Class: High Sensitivity DNA Assay
 Data Path: C:\...ents and Settings\Bioanalyzer\2012-05-24\2012-05-24_002.xad

Created: 5/24/2012 10:26:30 AM
 Modified: 5/24/2012 12:56:41 PM

Run Logbook

Description	Number	Source	Category	Sub Category	Time	Time Zone	User	Host
Run ended on port 1 (Number of wells acquired: 11)		Instrument	Run		5/24/2012 11:04:58 AM	(GMT --07:00) Pacific Standard Time	UC Davis	D8XSMGH1
Run started on port 1 (File: C:\Documents and Settings\Bioanalyzer\2012-05-24\2012-05-24_002.xad)		Instrument	Run		5/24/2012 10:26:36 AM	(GMT --07:00) Pacific Standard Time	UC Davis	D8XSMGH1
Product Number : G2938B		Instrument	Run		5/24/2012 10:26:36 AM	(GMT --07:00) Pacific Standard Time	UC Davis	D8XSMGH1
Name :		Instrument	Run		5/24/2012 10:26:36 AM	(GMT --07:00) Pacific Standard Time	UC Davis	D8XSMGH1
Vendor : Agilent Technologies		Instrument	Run		5/24/2012 10:26:36 AM	(GMT --07:00) Pacific Standard Time	UC Davis	D8XSMGH1
Serial# : DE13701086		Instrument	Run		5/24/2012 10:26:36 AM	(GMT --07:00) Pacific Standard Time	UC Davis	D8XSMGH1
Firmware : C.01.069		Instrument	Run		5/24/2012 10:26:36 AM	(GMT --07:00) Pacific Standard Time	UC Davis	D8XSMGH1
Cartridge : Electrode		Instrument	Run		5/24/2012 10:26:36 AM	(GMT --07:00) Pacific Standard Time	UC Davis	D8XSMGH1