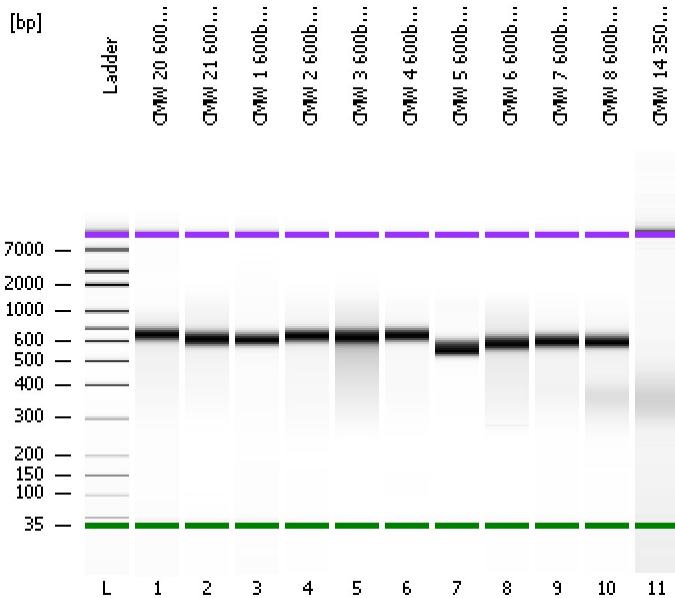


Assay Class: High Sensitivity DNA Assay
Data Path: C:\...ents and Settings\Bioanalyzer\2012-05-24\2012-05-24_003.xad

Created: 5/24/2012 3:04:01 PM
Modified: 5/24/2012 3:58:06 PM

Electrophoresis File Run Summary



Instrument Information:

Instrument Name: DE13701086 Firmware: C.01.069
Serial#: DE13701086 Type: G2938B

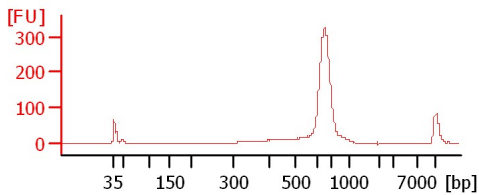
Assay Information:

Assay Origin Path: C:\Program Files\Agilent\2100 bioanalyzer\2100 expert\assays\dsDNA\High Sensitivity DNA.xsy
Assay Class: High Sensitivity DNA Assay
Version: 1.03
Assay Comments: Copyright © 2003-2010 Agilent Technologies

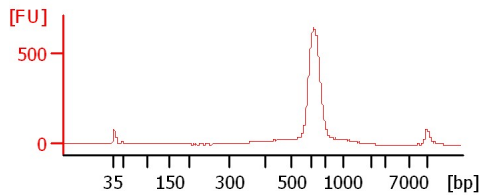
Chip Information:

Chip Lot #:
Reagent Kit Lot #:
Chip Comments:

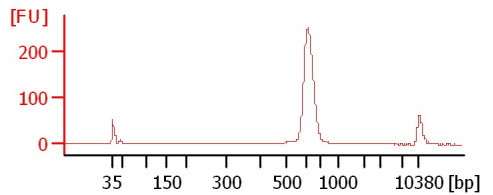
CMW 20 600bp Lib (10 DNA, 12 cyc)



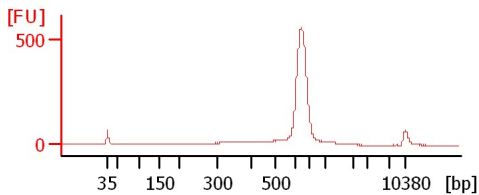
CMW 21 600bp Lib (10 DNA, 12 cyc)



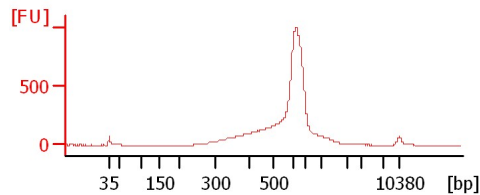
CMW 1 600bp Lib (15 DNA, 12 cyc)



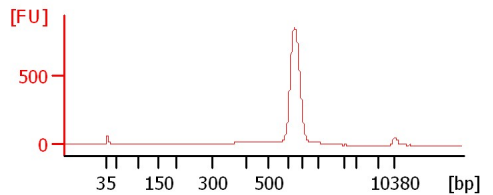
CMW 2 600bp Lib (10 DNA, 12 cyc)



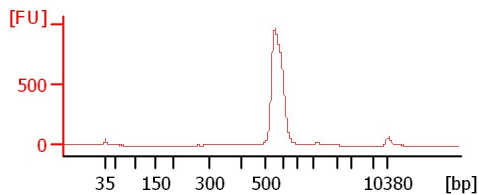
CMW 3 600bp Lib (15 DNA, 12 cyc)



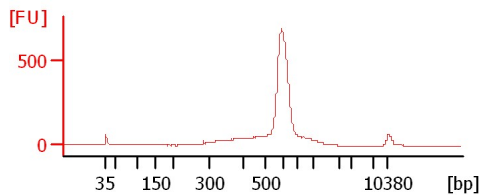
CMW 4 600bp Lib (15 DNA, 12 cyc)



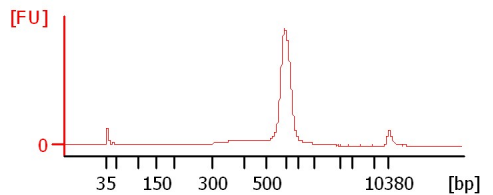
CMW 5 600bp Lib (15 DNA, 12 cyc)



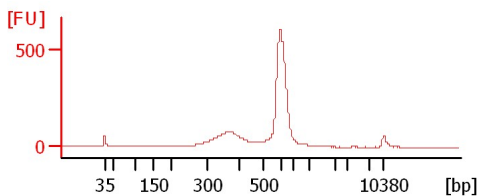
CMW 6 600bp Lib (15 DNA, 12 cyc)



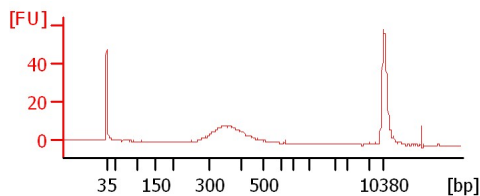
CMW 7 600bp Lib (15 DNA, 12 cyc)



CMW 8 600bp Lib (20 DNA, 12 cyc)



CMW 14 350bp Lib re-do, 4/26/12



Assay Class: High Sensitivity DNA Assay
Data Path: C:\...ents and Settings\Bioanalyzer\2012-05-24\2012-05-24_003.xad

Created: 5/24/2012 3:04:01 PM
Modified: 5/24/2012 3:58:06 PM

Electrophoresis File Run Summary (Chip Summary)

Sample Name	Sample Comment	Rest. Digest	Status	Observation	Result Label	Result Color
CMW 20 600bp Lib (10 DNA, 12 cyc)		<input type="checkbox"/>	✓			
CMW 21 600bp Lib (10 DNA, 12 cyc)		<input type="checkbox"/>	✓			
CMW 1 600bp Lib (15 DNA, 12 cyc)		<input type="checkbox"/>	✓			
CMW 2 600bp Lib (10 DNA, 12 cyc)		<input type="checkbox"/>	✓			
CMW 3 600bp Lib (15 DNA, 12 cyc)		<input type="checkbox"/>	✓			
CMW 4 600bp Lib (15 DNA, 12 cyc)		<input type="checkbox"/>	✓			
CMW 5 600bp Lib (15 DNA, 12 cyc)		<input type="checkbox"/>	✓			
CMW 6 600bp Lib (15 DNA, 12 cyc)		<input type="checkbox"/>	✓			
CMW 7 600bp Lib (15 DNA, 12 cyc)		<input type="checkbox"/>	✓			
CMW 8 600bp Lib (20 DNA, 12 cyc)		<input type="checkbox"/>	✓			
CMW 14 350bp Lib re-do, 4/26/12		<input type="checkbox"/>	✓			
Ladder		<input type="checkbox"/>	✓			

Chip Lot # **Reagent Kit Lot #**

Chip Comments :

Assay Class: High Sensitivity DNA Assay
Data Path: C:\...ents and Settings\Bioanalyzer\2012-05-24\2012-05-24_003.xad

Created: 5/24/2012 3:04:01 PM
Modified: 5/24/2012 3:58:06 PM

Electrophoresis Assay Details

General Analysis Settings

Number of Available Sample and Ladder Wells (Max.) : 12
Minimum Visible Range [s] : 32
Maximum Visible Range [s] : 138
Start Analysis Time Range [s] : 33
End Analysis Time Range [s] : 137.5
Ladder Concentration [pg/μl] : 1950
Uses Standard Area for Ladder Fragments
Lower Marker Concentration [pg/μl] : 125
Upper Marker Concentration [pg/μl] : 75
Used Upper Marker for Quantitation
Standard Curve Fit is Point to Point
Show Data Aligned to Lower and Upper Marker

Integrator Settings

Integration Start Time [s] : 33.05
Integration End Time [s] : 137
Slope Threshold : 0.8
Height Threshold [FU] : 5
Area Threshold : 0.1
Width Threshold [s] : 0.6
Baseline Plateau [s] : 0.5

Filter Settings

Filter Width [s] : 0.5
Polynomial Order : 4

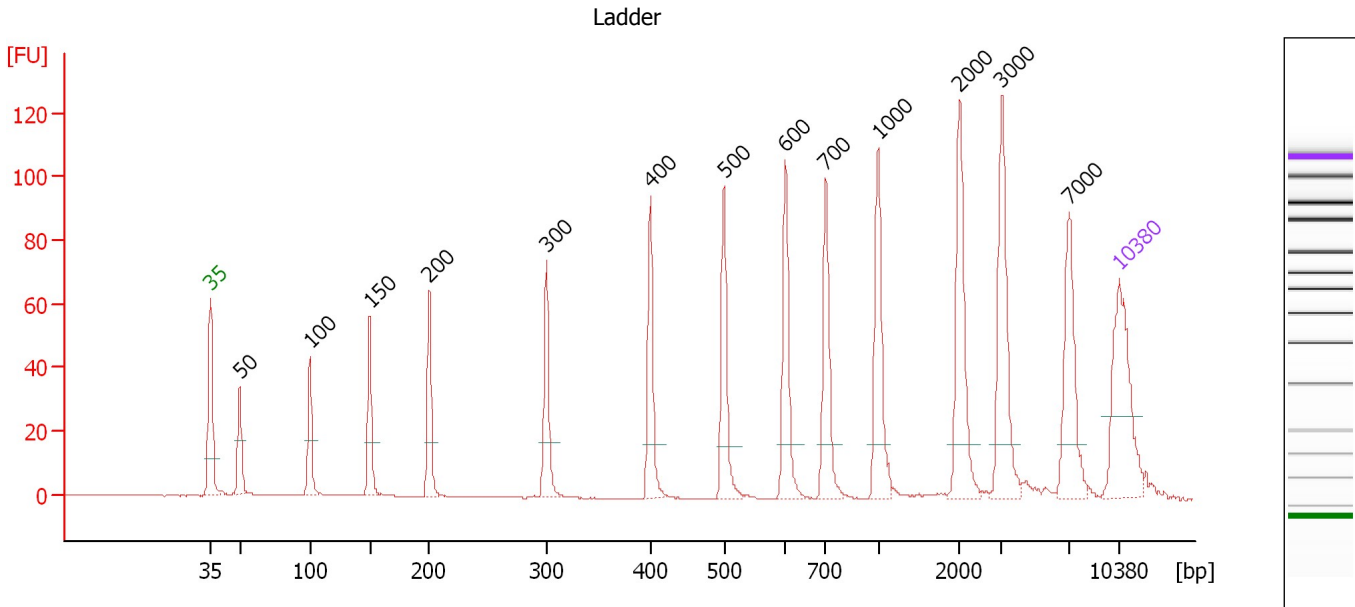
Ladder

Ladder Peak	Size	Area
1	35	160
2	50	210
3	100	208
4	150	221
5	200	242
6	300	270
7	400	305
8	500	306
9	600	336
10	700	321
11	1000	366
12	2000	413
13	3000	411
14	7000	400
15	10380	214

Assay Class: High Sensitivity DNA Assay
 Data Path: C:\...ents and Settings\Bioanalyzer\2012-05-24\2012-05-24_003.xad

Created: 5/24/2012 3:04:01 PM
 Modified: 5/24/2012 3:58:06 PM

Electropherogram Summary



Overall Results for Ladder

Noise: 0.2

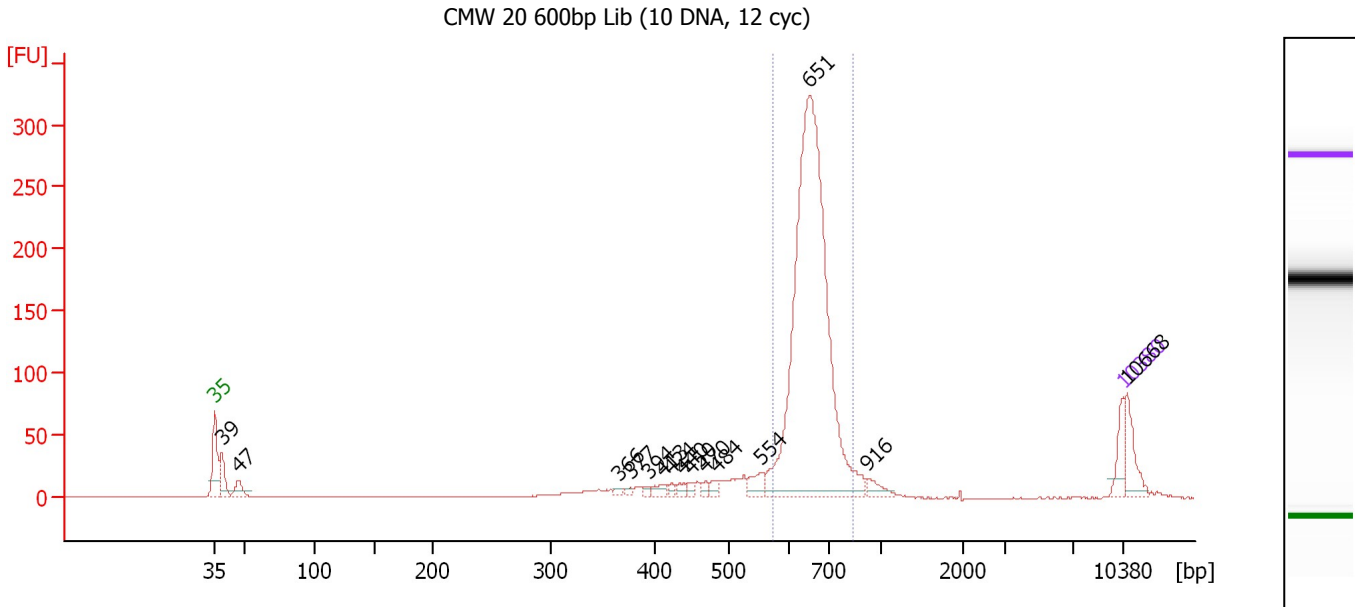
Peak table for Ladder

Peak	Size [bp]	Conc. [pg/μl]	Molarity [pmol/l]	Observations
1	35	125.00	5,411.3	Lower Marker
2	50	150.00	4,545.5	Ladder Peak
3	100	150.00	2,272.7	Ladder Peak
4	150	150.00	1,515.2	Ladder Peak
5	200	150.00	1,136.4	Ladder Peak
6	300	150.00	757.6	Ladder Peak
7	400	150.00	568.2	Ladder Peak
8	500	150.00	454.5	Ladder Peak
9	600	150.00	378.8	Ladder Peak
10	700	150.00	324.7	Ladder Peak
11	1,000	150.00	227.3	Ladder Peak
12	2,000	150.00	113.6	Ladder Peak
13	3,000	150.00	75.8	Ladder Peak
14	7,000	150.00	32.5	Ladder Peak
15	10,380	75.00	10.9	Upper Marker

Assay Class: High Sensitivity DNA Assay
 Data Path: C:\...ents and Settings\Bioanalyzer\2012-05-24\2012-05-24_003.xad

Created: 5/24/2012 3:04:01 PM
 Modified: 5/24/2012 3:58:06 PM

Electropherogram Summary Continued ...



Overall Results for sample 1 : CMW 20 600bp Lib (10 DNA, 12 cyc)

Number of peaks found: 15 Corr. Area 1: 1,082.8
 Noise: 0.2

Peak table for sample 1 : CMW 20 600bp Lib (10 DNA, 12 cyc)

Peak	Size [bp]	Conc. [pg/μl]	Molarity [pmol/l]	Observations
1	35	125.00	5,411.3	Lower Marker
2	39	146.77	5,769.1	
3	47	74.01	2,371.9	
4	366	14.40	59.5	
5	377	14.45	58.1	
6	394	17.48	67.2	
7	413	33.67	123.6	
8	424	16.57	59.3	
9	440	23.71	81.8	
10	450	17.85	60.0	
11	470	22.04	71.1	
12	484	24.59	76.9	
13	554	66.23	181.3	
14	651	2,455.59	5,716.4	
15	916	46.13	76.3	
16	10,380	75.00	10.9	Upper Marker
17	10,668	0.00	0.0	

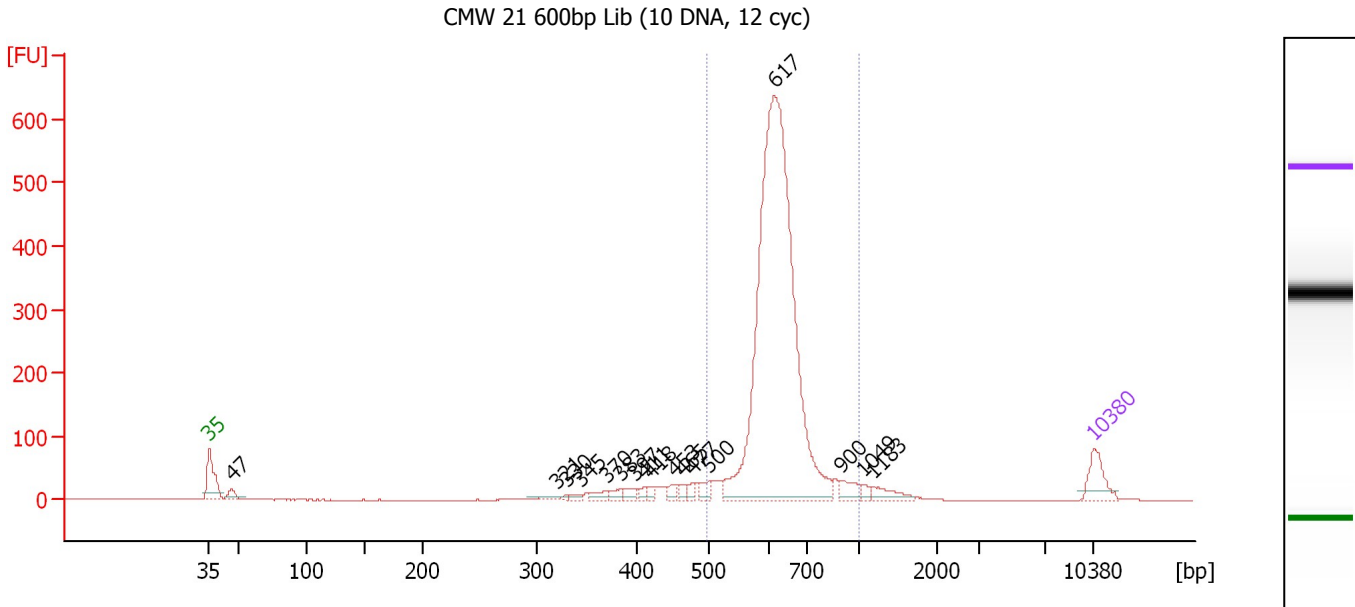
Region table for sample 1 : CMW 20 600bp Lib (10 DNA, 12 cyc)

From [bp]	To [bp]	Average Size [bp]	Molarity [pmol/l]	Conc. [pg/μl]	Corr. Area	% of Total	Size distribution in CV [%]	Color
572	835	657	5,485.8	2,371.26	1,082.8	73	6.5	Blue

Assay Class: High Sensitivity DNA Assay
 Data Path: C:\...ents and Settings\Bioanalyzer\2012-05-24\2012-05-24_003.xad

Created: 5/24/2012 3:04:01 PM
 Modified: 5/24/2012 3:58:06 PM

Electropherogram Summary Continued ...



Overall Results for sample 2 : CMW 21 600bp Lib (10 DNA, 12 cyc)

Number of peaks found: 17 Corr. Area 1: 2,606.6
 Noise: 0.2

Peak table for sample 2 : CMW 21 600bp Lib (10 DNA, 12 cyc)

Peak	Size [bp]	Conc. [pg/μl]	Molarity [pmol/l]	Observations
1	35	125.00	5,411.3	Lower Marker
2	47	42.48	1,375.8	
3	321	15.79	74.4	
4	330	6.13	28.1	
5	345	14.10	62.0	
6	370	28.73	117.6	
7	383	24.78	98.0	
8	397	26.66	101.6	
9	411	17.67	65.2	
10	418	15.36	55.6	
11	453	21.67	72.5	
12	465	17.65	57.5	
13	477	18.46	58.6	
14	500	31.42	95.2	
15	617	2,279.55	5,600.4	
16	900	47.77	80.4	
17	1,049	14.64	21.1	
18	1,183	44.90	57.5	
19	10,380	75.00	10.9	Upper Marker

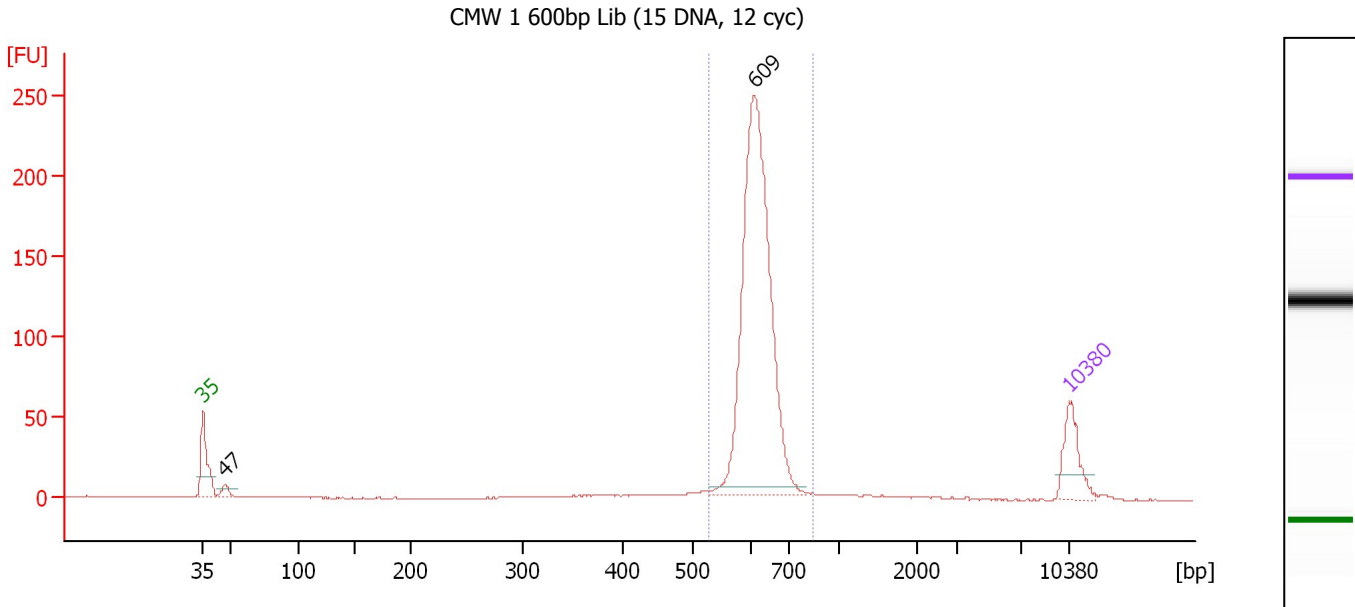
Region table for sample 2 : CMW 21 600bp Lib (10 DNA, 12 cyc)

From [bp]	To [bp]	Average Size [bp]	Molarity [pmol/l]	Conc. [pg/μl]	Corr. Area	% of Total	Size distribution in CV [%]	Color
498	1,000	632	5,829.0	2,408.56	2,606.6	86	10.8	Blue

Assay Class: High Sensitivity DNA Assay
 Data Path: C:\...ents and Settings\Bioanalyzer\2012-05-24\2012-05-24_003.xad

Created: 5/24/2012 3:04:01 PM
 Modified: 5/24/2012 3:58:06 PM

Electropherogram Summary Continued ...



Overall Results for sample 3 : CMW 1 600bp Lib (15 DNA, 12 cyc)

Number of peaks found: 2 Corr. Area 1: 796.9
 Noise: 0.2

Peak table for sample 3 : CMW 1 600bp Lib (15 DNA, 12 cyc)

Peak	Size [bp]	Conc. [pg/μl]	Molarity [pmol/l]	Observations
1	35	125.00	5,411.3	Lower Marker
2	47	24.95	803.9	
3	609	922.97	2,296.0	
4	10,380	75.00	10.9	Upper Marker

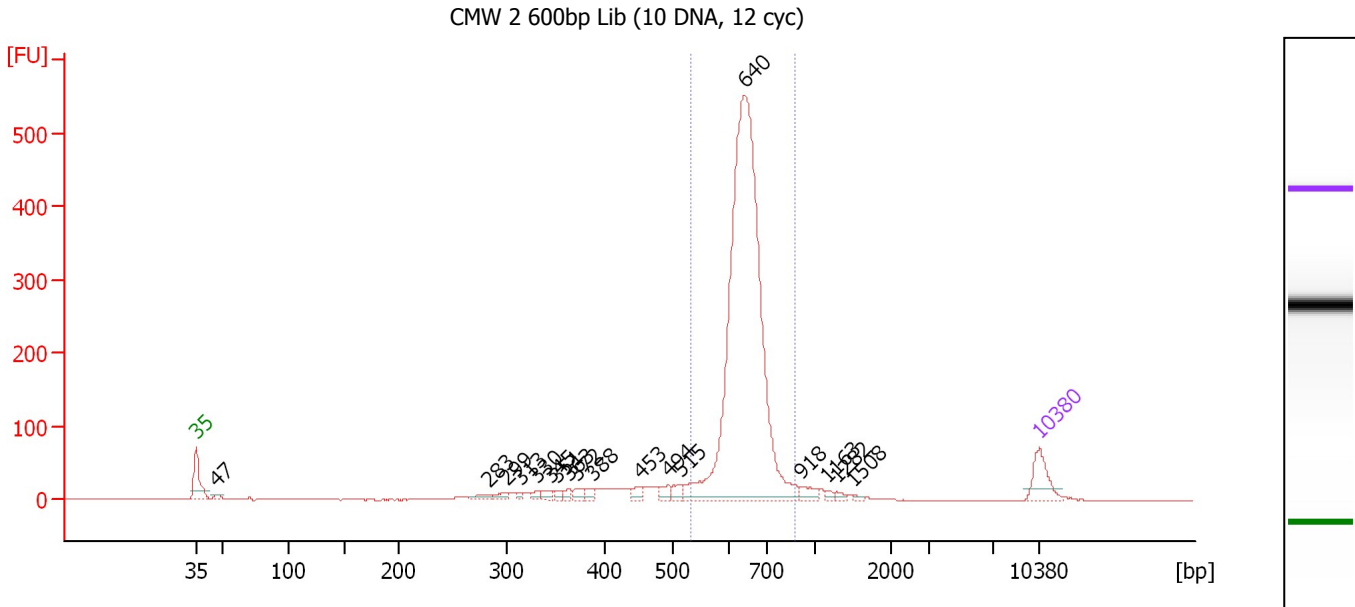
Region table for sample 3 : CMW 1 600bp Lib (15 DNA, 12 cyc)

From [bp]	To [bp]	Average Size [bp]	Molarity [pmol/l]	Conc. [pg/μl]	Corr. Area	% of Total	Size distribution in CV [%]	Color
528	839	619	2,359.1	961.87	796.9	90	5.7	Blue

Assay Class: High Sensitivity DNA Assay
 Data Path: C:\...ents and Settings\Bioanalyzer\2012-05-24\2012-05-24_003.xad

Created: 5/24/2012 3:04:01 PM
 Modified: 5/24/2012 3:58:06 PM

Electropherogram Summary Continued ...



Overall Results for sample 4 : CMW 2 600bp Lib (10 DNA, 12 cyc)

Number of peaks found: 18 Corr. Area 1: 1,913.7
 Noise: 0.2

Peak table for sample 4 : CMW 2 600bp Lib (10 DNA, 12 cyc)

Peak	Size [bp]	Conc. [pg/μl]	Molarity [pmol/l]	Observations
1	35	125.00	5,411.3	Lower Marker
2	47	18.77	608.1	
3	283	23.64	126.5	
4	299	22.64	114.6	
5	313	11.02	53.3	
6	330	15.39	70.7	
7	345	21.83	95.8	
8	351	14.05	60.6	
9	363	16.27	67.8	
10	372	23.59	96.0	
11	388	18.10	70.7	
12	453	25.08	83.9	
13	494	27.97	85.8	
14	515	23.88	70.3	
15	640	2,058.43	4,870.9	
16	918	31.81	52.5	
17	1,163	9.17	11.9	
18	1,282	9.92	11.7	
19	1,508	5.31	5.3	
20	10,380	75.00	10.9	Upper Marker

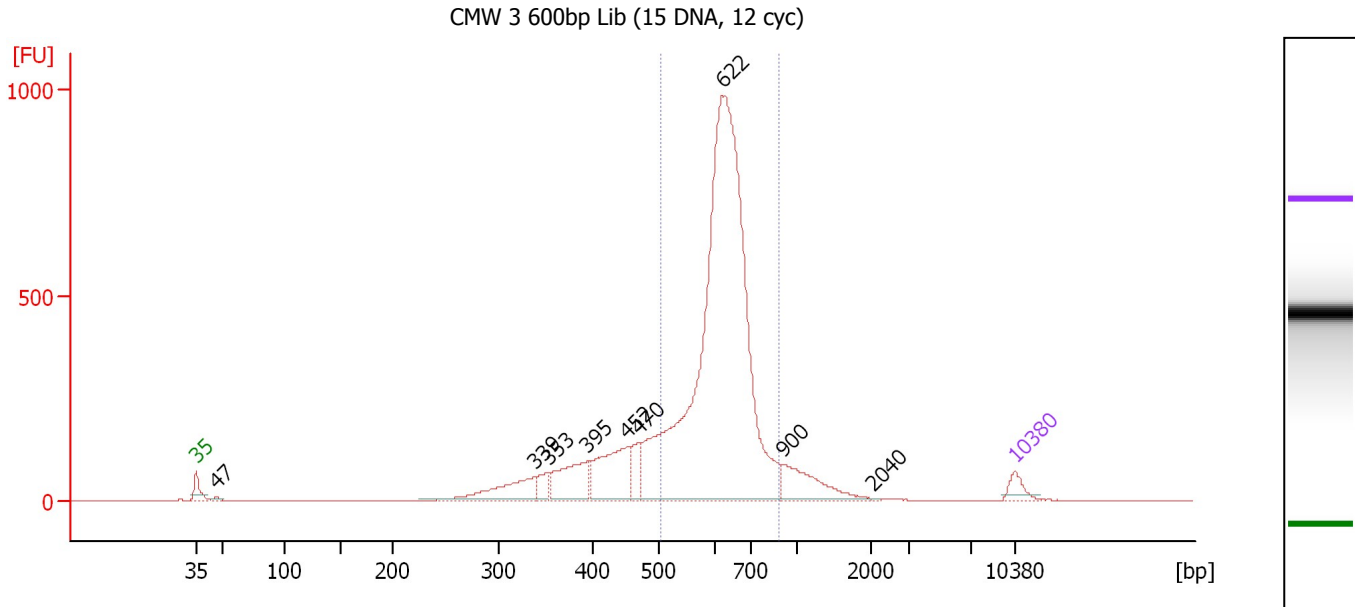
Region table for sample 4 : CMW 2 600bp Lib (10 DNA, 12 cyc)

From [bp]	To [bp]	Average Size [bp]	Molarity [pmol/l]	Conc. [pg/μl]	Corr. Area	% of Total	Size distribution in CV [%]	Color
532	874	645	4,803.2	2,038.14	1,913.7	80	7.2	Blue

Assay Class: High Sensitivity DNA Assay
 Data Path: C:\...ents and Settings\Bioanalyzer\2012-05-24\2012-05-24_003.xad

Created: 5/24/2012 3:04:01 PM
 Modified: 5/24/2012 3:58:06 PM

Electropherogram Summary Continued ...



Overall Results for sample 5 : CMW 3 600bp Lib (15 DNA, 12 cyc)

Number of peaks found: 9 Corr. Area 1: 4,972.8
 Noise: 0.2

Peak table for sample 5 : CMW 3 600bp Lib (15 DNA, 12 cyc)

Peak	Size [bp]	Conc. [pg/μl]	Molarity [pmol/l]	Observations
1	35	125.00	5,411.3	Lower Marker
2	47	19.76	640.5	
3	339	389.43	1,740.0	
4	353	118.79	510.3	
5	395	435.82	1,673.5	
6	452	577.85	1,935.7	
7	470	192.78	621.6	
8	622	5,586.88	13,608.9	
9	900	349.22	587.7	
10	2,040	3.18	2.4	
11	10,380	75.00	10.9	Upper Marker

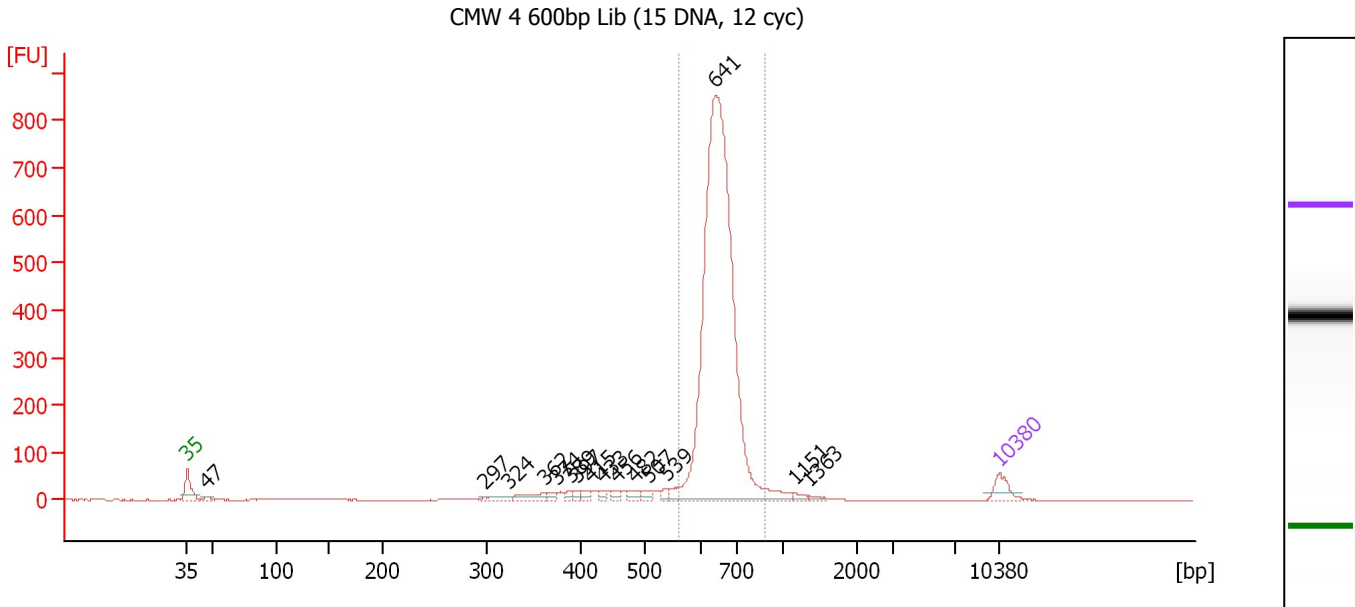
Region table for sample 5 : CMW 3 600bp Lib (15 DNA, 12 cyc)

From [bp]	To [bp]	Average Size [bp]	Molarity [pmol/l]	Conc. [pg/μl]	Corr. Area	% of Total	Size distribution in CV [%]	Color
504	882	630	12,980.3	5,341.15	4,972.8	69	10.2	Blue

Assay Class: High Sensitivity DNA Assay
 Data Path: C:\...ents and Settings\Bioanalyzer\2012-05-24\2012-05-24_003.xad

Created: 5/24/2012 3:04:01 PM
 Modified: 5/24/2012 3:58:06 PM

Electropherogram Summary Continued ...



Overall Results for sample 6 : CMW 4 600bp Lib (15 DNA, 12 cyc)

Number of peaks found: 16 Corr. Area 1: 2,834.8
 Noise: 0.1

Peak table for sample 6 : CMW 4 600bp Lib (15 DNA, 12 cyc)

Peak	Size [bp]	Conc. [pg/μl]	Molarity [pmol/l]	Observations
1	35	125.00	5,411.3	Lower Marker
2	47	25.27	821.6	
3	297	8.30	42.4	
4	324	31.91	149.1	
5	362	69.35	290.2	
6	374	25.38	102.7	
7	389	28.98	112.8	
8	397	21.72	82.9	
9	415	35.86	130.8	
10	433	24.07	84.2	
11	456	28.00	93.0	
12	482	40.45	127.2	
13	507	40.06	119.8	
14	539	31.36	88.2	
15	641	3,826.64	9,040.2	
16	1,151	19.44	25.6	
17	1,363	14.02	15.6	
18	10,380	75.00	10.9	Upper Marker

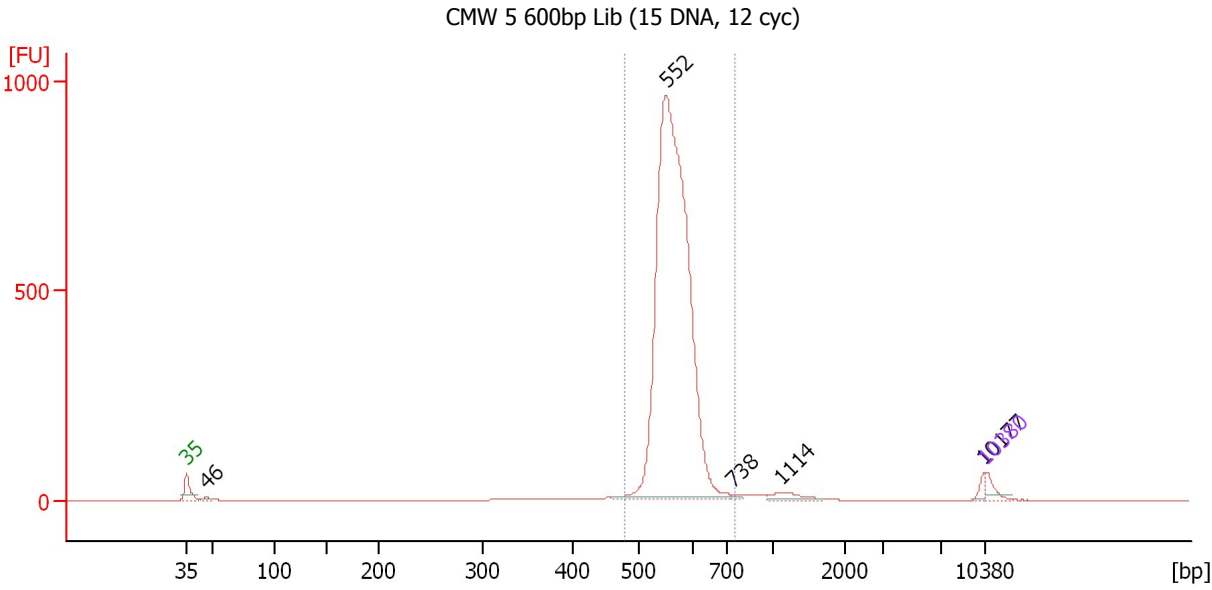
Region table for sample 6 : CMW 4 600bp Lib (15 DNA, 12 cyc)

From [bp]	To [bp]	Average Size [bp]	Molarity [pmol/l]	Conc. [pg/μl]	Corr. Area	% of Total	Size distribution in CV [%]	Color
560	888	654	8,682.1	3,735.34	2,834.8	85	6.7	Blue

Assay Class: High Sensitivity DNA Assay
 Data Path: C:\...ents and Settings\Bioanalyzer\2012-05-24\2012-05-24_003.xad

Created: 5/24/2012 3:04:01 PM
 Modified: 5/24/2012 3:58:06 PM

Electropherogram Summary Continued ...



Overall Results for sample 7 : CMW 5 600bp Lib (15 DNA, 12 cyc)

Number of peaks found: 5 Corr. Area 1: 3,815.3
 Noise: 0.2

Peak table for sample 7 : CMW 5 600bp Lib (15 DNA, 12 cyc)

Peak	Size [bp]	Conc. [pg/μl]	Molarity [pmol/l]	Observations
1	35	125.00	5,411.3	Lower Marker
2	46	29.87	981.7	
3	552	6,900.99	18,942.9	
4	738	23.86	49.0	
5	1,114	96.15	130.8	
6	10,177	49.15	7.3	
7	10,380	75.00	10.9	Upper Marker

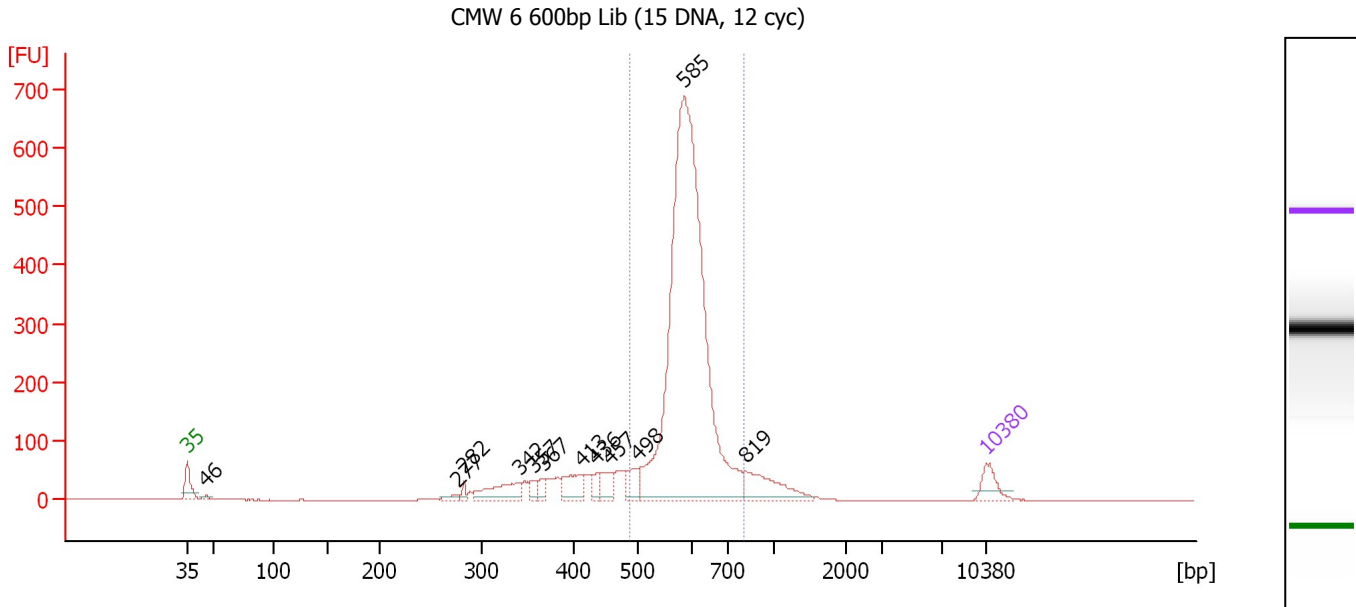
Region table for sample 7 : CMW 5 600bp Lib (15 DNA, 12 cyc)

From [bp]	To [bp]	Average Size [bp]	Molarity [pmol/l]	Conc. [pg/μl]	Corr. Area	% of Total	Size distribution in CV [%]	Color
481	740	568	18,282.6	6,834.58	3,815.3	94	5.4	Blue

Assay Class: High Sensitivity DNA Assay
 Data Path: C:\...ents and Settings\Bioanalyzer\2012-05-24\2012-05-24_003.xad

Created: 5/24/2012 3:04:01 PM
 Modified: 5/24/2012 3:58:06 PM

Electropherogram Summary Continued ...



Overall Results for sample 8 : CMW 6 600bp Lib (15 DNA, 12 cyc)

Number of peaks found: 12 Corr. Area 1: 2,849.1
 Noise: 0.1

Peak table for sample 8 : CMW 6 600bp Lib (15 DNA, 12 cyc)

Peak	Size [bp]	Conc. [pg/μl]	Molarity [pmol/l]	Observations
1	35	125.00	5,411.3	Lower Marker
2	46	20.61	676.4	
3	277	27.53	150.6	
4	282	23.21	124.7	
5	342	178.83	792.9	
6	357	45.21	191.9	
7	367	43.92	181.1	
8	413	136.47	501.3	
9	436	54.89	190.9	
10	457	87.56	290.3	
11	498	91.85	279.3	
12	585	3,185.81	8,250.8	
13	819	221.52	409.9	
14	10,380	75.00	10.9	Upper Marker

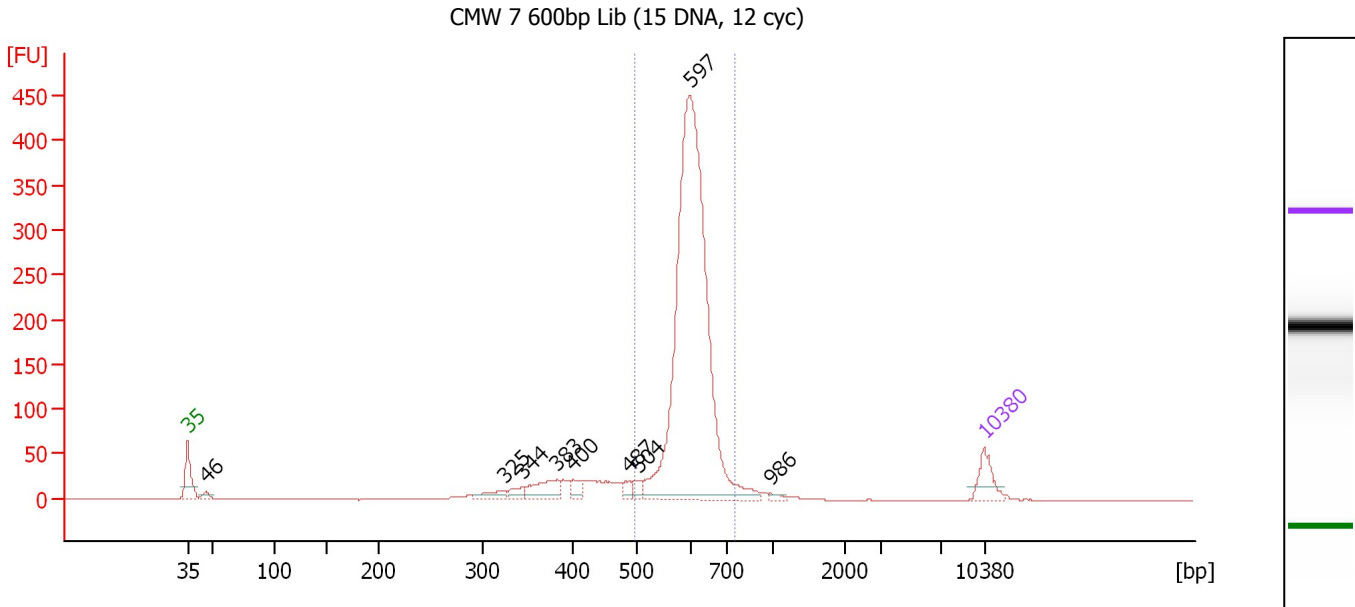
Region table for sample 8 : CMW 6 600bp Lib (15 DNA, 12 cyc)

From [bp]	To [bp]	Average Size [bp]	Molarity [pmol/l]	Conc. [pg/μl]	Corr. Area	% of Total	Size distribution in CV [%]	Color
487	805	597	8,350.7	3,268.59	2,849.1	76	7.8	Blue

Assay Class: High Sensitivity DNA Assay
 Data Path: C:\...ents and Settings\Bioanalyzer\2012-05-24\2012-05-24_003.xad

Created: 5/24/2012 3:04:01 PM
 Modified: 5/24/2012 3:58:06 PM

Electropherogram Summary Continued ...



Overall Results for sample 9 : CMW 7 600bp Lib (15 DNA, 12 cyc)

Number of peaks found: 9 Corr. Area 1: 1,631.0
 Noise: 0.2

Peak table for sample 9 : CMW 7 600bp Lib (15 DNA, 12 cyc)

Peak	Size [bp]	Conc. [pg/μl]	Molarity [pmol/l]	Observations
1	35	125.00	5,411.3	Lower Marker
2	46	26.14	868.8	
3	325	54.79	255.3	
4	344	40.63	178.7	
5	383	117.47	464.6	
6	400	47.63	180.4	
7	487	31.42	97.8	
8	504	34.08	102.4	
9	597	2,212.24	5,610.5	
10	986	11.72	18.0	
11	10,380	75.00	10.9	Upper Marker

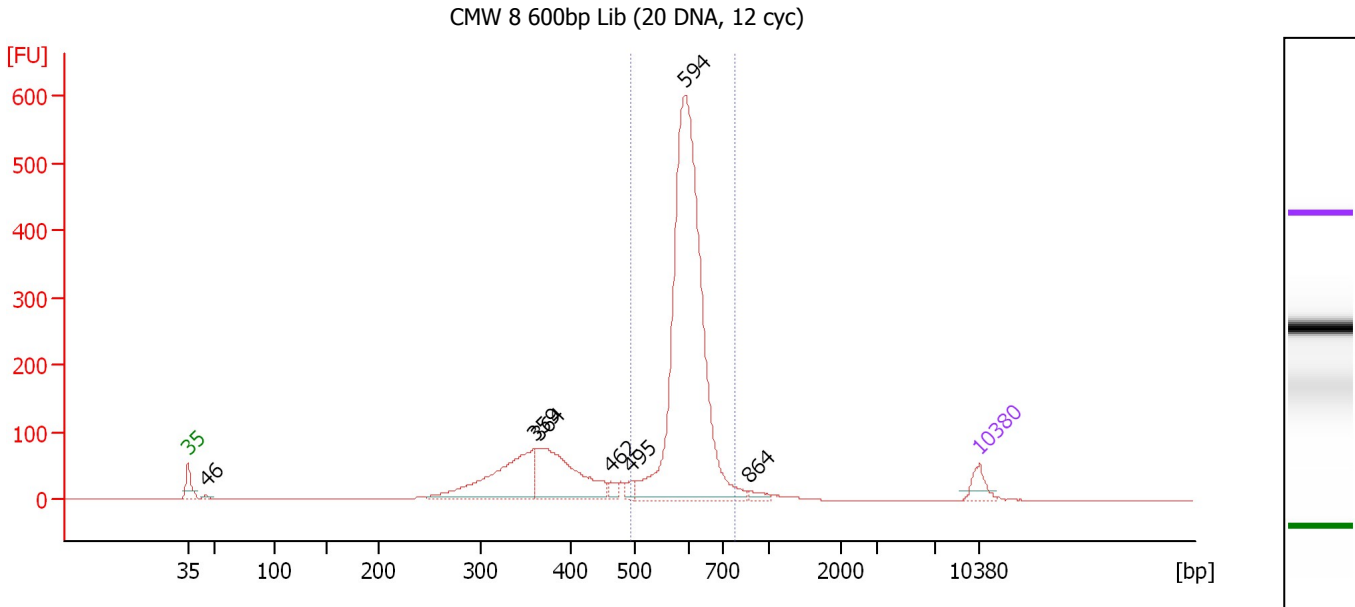
Region table for sample 9 : CMW 7 600bp Lib (15 DNA, 12 cyc)

From [bp]	To [bp]	Average Size [bp]	Molarity [pmol/l]	Conc. [pg/μl]	Corr. Area	% of Total	Size distribution in CV [%]	Color
496	752	604	5,594.8	2,224.76	1,631.0	80	6.1	Blue

Assay Class: High Sensitivity DNA Assay
 Data Path: C:\...ents and Settings\Bioanalyzer\2012-05-24\2012-05-24_003.xad

Created: 5/24/2012 3:04:01 PM
 Modified: 5/24/2012 3:58:06 PM

Electropherogram Summary Continued ...



Overall Results for sample 10 : CMW 8 600bp Lib (20 DNA, 12 cyc)

Number of peaks found: 7 Corr. Area 1: 2,082.7
 Noise: 0.2

Peak table for sample 10 : CMW 8 600bp Lib (20 DNA, 12 cyc)

Peak	Size [bp]	Conc. [pg/μl]	Molarity [pmol/l]	Observations
1	35	125.00	5,411.3	Lower Marker
2	46	21.37	709.1	
3	359	750.47	3,164.6	
4	364	743.53	3,094.8	
5	462	42.45	139.1	
6	495	45.37	138.9	
7	594	3,033.47	7,741.1	
8	864	35.80	62.8	
9	10,380	75.00	10.9	Upper Marker

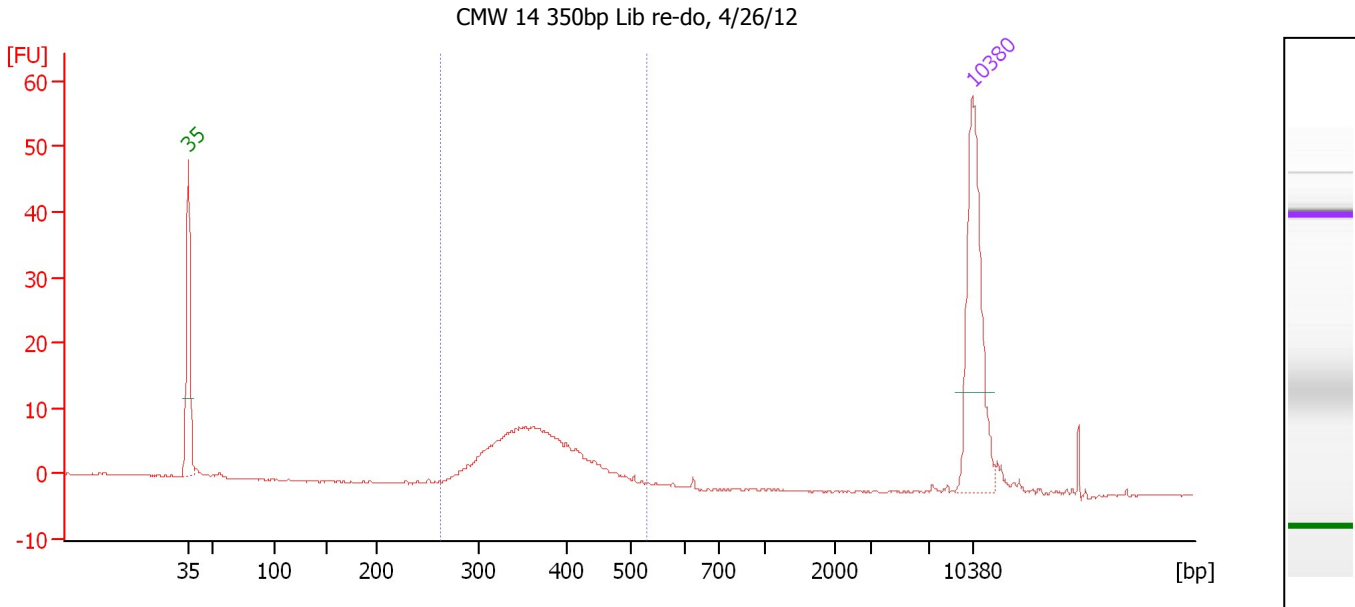
Region table for sample 10 : CMW 8 600bp Lib (20 DNA, 12 cyc)

From [bp]	To [bp]	Average Size [bp]	Molarity [pmol/l]	Conc. [pg/μl]	Corr. Area	% of Total	Size distribution in CV [%]	Color
493	773	603	7,733.2	3,065.83	2,082.7	65	6.3	Blue

Assay Class: High Sensitivity DNA Assay
 Data Path: C:\...ents and Settings\Bioanalyzer\2012-05-24\2012-05-24_003.xad

Created: 5/24/2012 3:04:01 PM
 Modified: 5/24/2012 3:58:06 PM

Electropherogram Summary Continued ...



Overall Results for sample 11 : CMW 14 350bp Lib re-do, 4/26/12

Number of peaks found: 0 Corr. Area 1: 108.6
 Noise: 0.1

Peak table for sample 11 : CMW 14 350bp Lib re-do, 4/26/12

Peak	Size [bp]	Conc. [pg/μl]	Molarity [pmol/l]	Observations
1	35	125.00	5,411.3	Lower Marker
2	10,380	75.00	10.9	Upper Marker

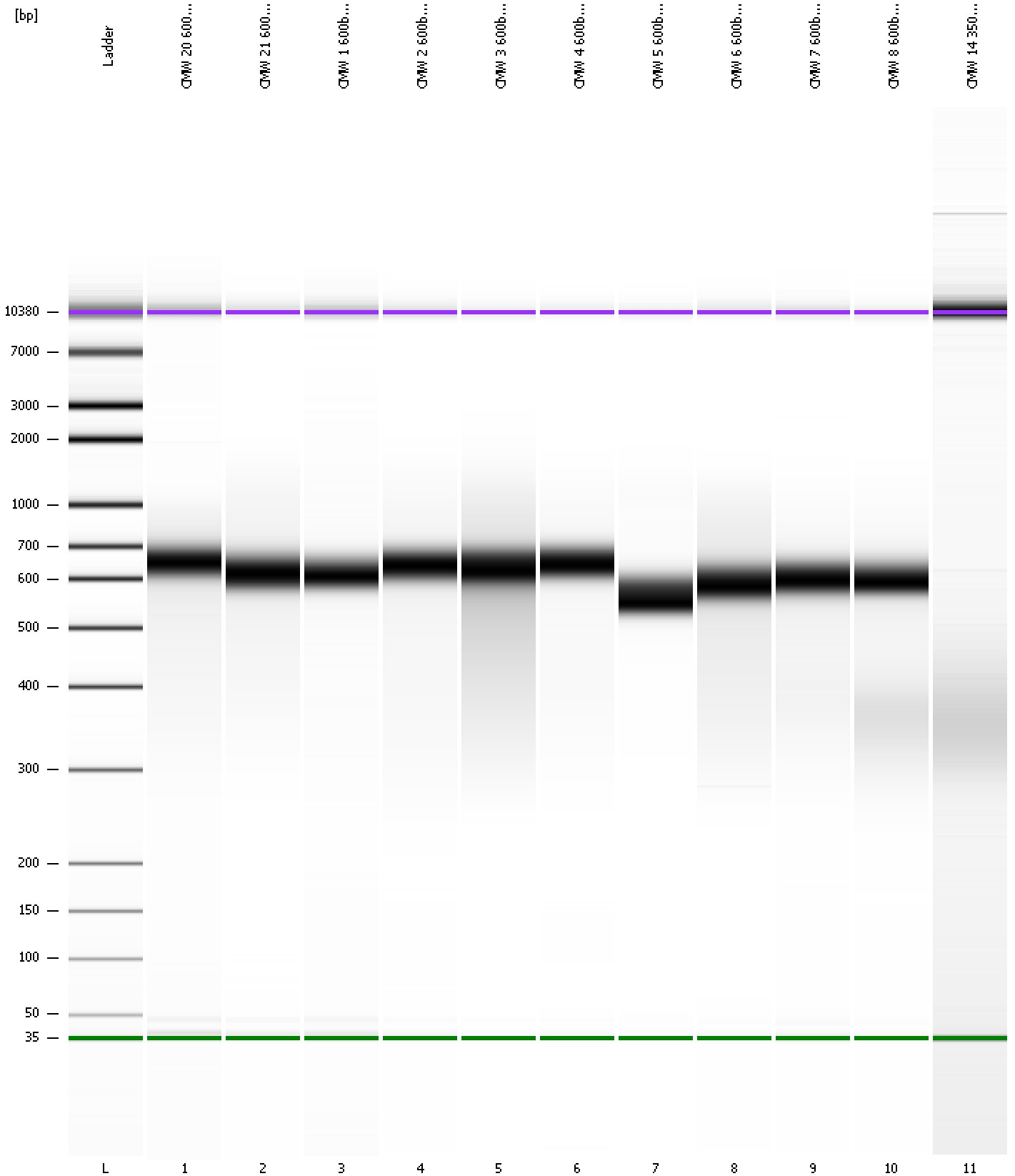
Region table for sample 11 : CMW 14 350bp Lib re-do, 4/26/12

From [bp]	To [bp]	Average Size [bp]	Molarity [pmol/l]	Conc. [pg/μl]	Corr. Area	% of Total	Size distribution in CV [%]	Color
263	530	368	629.2	149.73	108.6	90	13.3	Blue

Assay Class: High Sensitivity DNA Assay
Data Path: C:\...ents and Settings\Bioanalyzer\2012-05-24\2012-05-24_003.xad

Created: 5/24/2012 3:04:01 PM
Modified: 5/24/2012 3:58:06 PM

Gel Image



Assay Class: High Sensitivity DNA Assay
 Data Path: C:\...ents and Settings\Bioanalyzer\2012-05-24\2012-05-24_003.xad

Created: 5/24/2012 3:04:01 PM
 Modified: 5/24/2012 3:58:06 PM

Run Logbook

Description	Number	Source	Category	Sub Category	Time	Time Zone	User	Host
Run ended on port 1 (Number of wells acquired: 12)		Instrument	Run		5/24/2012 3:45:20 PM	(GMT --07:00) Pacific Standard Time	UC Davis	D8XSMGH1
Run started on port 1 (File: C:\Documents and Settings\Bioanalyzer\2012-05-24\2012-05-24_003.xad)		Instrument	Run		5/24/2012 3:04:07 PM	(GMT --07:00) Pacific Standard Time	UC Davis	D8XSMGH1
Product Number : G2938B		Instrument	Run		5/24/2012 3:04:07 PM	(GMT --07:00) Pacific Standard Time	UC Davis	D8XSMGH1
Name :		Instrument	Run		5/24/2012 3:04:07 PM	(GMT --07:00) Pacific Standard Time	UC Davis	D8XSMGH1
Vendor : Agilent Technologies		Instrument	Run		5/24/2012 3:04:07 PM	(GMT --07:00) Pacific Standard Time	UC Davis	D8XSMGH1
Serial# : DE13701086		Instrument	Run		5/24/2012 3:04:07 PM	(GMT --07:00) Pacific Standard Time	UC Davis	D8XSMGH1
Firmware : C.01.069		Instrument	Run		5/24/2012 3:04:07 PM	(GMT --07:00) Pacific Standard Time	UC Davis	D8XSMGH1
Cartridge : Electrode		Instrument	Run		5/24/2012 3:04:07 PM	(GMT --07:00) Pacific Standard Time	UC Davis	D8XSMGH1