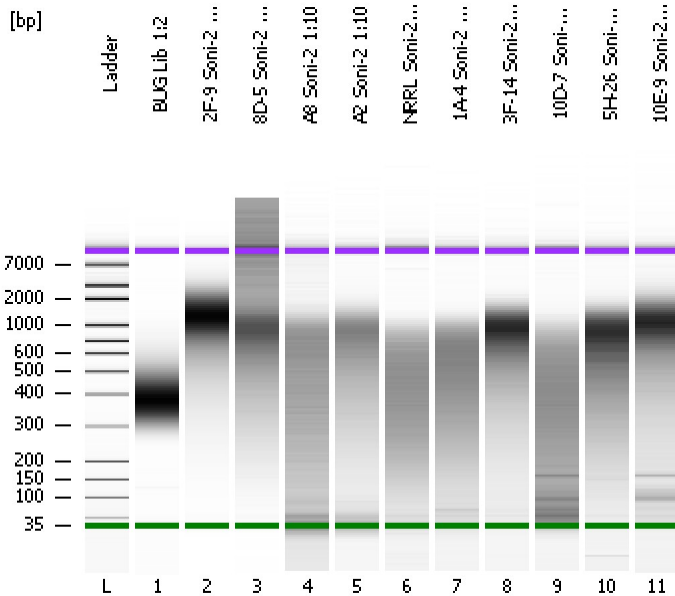


Assay Class: High Sensitivity DNA Assay
Data Path: C:\...ents and Settings\Bioanalyzer\2012-05-24\2012-05-24_005.xad

Created: 5/24/2012 5:44:42 PM
Modified: 5/25/2012 9:37:23 AM

Electrophoresis File Run Summary



Instrument Information:

Instrument Name: DE13701086 Firmware: C.01.069
Serial#: DE13701086 Type: G2938B

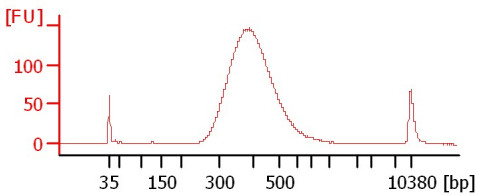
Assay Information:

Assay Origin Path: C:\Program Files\Agilent\2100 bioanalyzer\2100 expert\assays\dsDNA\High Sensitivity DNA.xsy
Assay Class: High Sensitivity DNA Assay
Version: 1.03
Assay Comments: Copyright © 2003-2010 Agilent Technologies

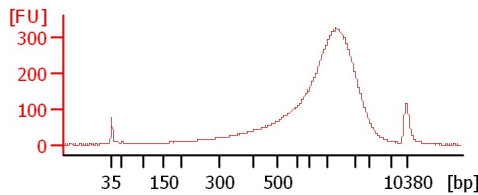
Chip Information:

Chip Lot #:
Reagent Kit Lot #:
Chip Comments:

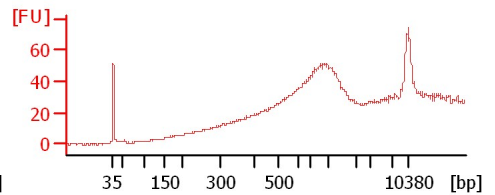
BUG Lib 1:2



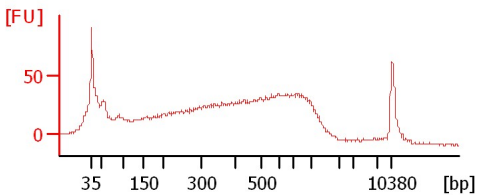
2F-9 Soni-2 1:10



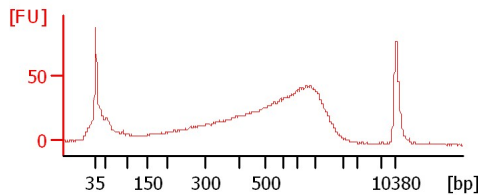
8D-5 Soni-2 1:10



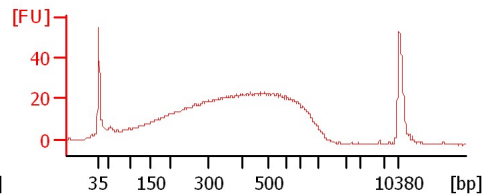
A8 Soni-2 1:10



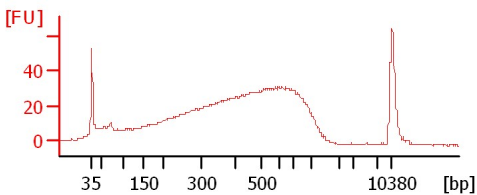
A2 Soni-2 1:10



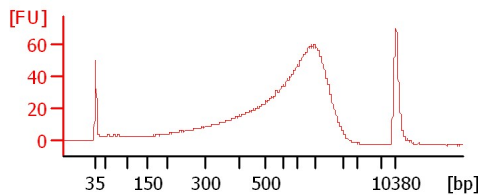
NRRL Soni-2 1:10



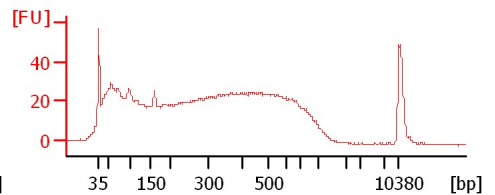
1A-4 Soni-2 1:10



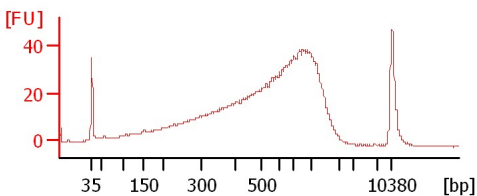
3F-14 Soni-2 1:10



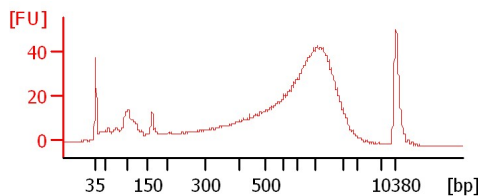
10D-7 Soni-2 1:10



5H-26 Soni-2 1:10



10E-9 Soni-2 1:10



Assay Class: High Sensitivity DNA Assay
 Data Path: C:\...ents and Settings\Bioanalyzer\2012-05-24\2012-05-24_005.xad

Created: 5/24/2012 5:44:42 PM
 Modified: 5/25/2012 9:37:23 AM

Electrophoresis File Run Summary (Chip Summary)

Sample Name	Sample Comment	Rest. Digest	Status	Observation	Result Label	Result Color
BUG Lib 1:2		<input type="checkbox"/>	✓			
2F-9 Soni-2 1:10		<input type="checkbox"/>	✓			
8D-5 Soni-2 1:10		<input type="checkbox"/>	✓			
A8 Soni-2 1:10		<input type="checkbox"/>	✓			
A2 Soni-2 1:10		<input type="checkbox"/>	✓			
NRRL Soni-2 1:10		<input type="checkbox"/>	✓			
1A-4 Soni-2 1:10		<input type="checkbox"/>	✓			
3F-14 Soni-2 1:10		<input type="checkbox"/>	✓			
10D-7 Soni-2 1:10		<input type="checkbox"/>	✓			
5H-26 Soni-2 1:10		<input type="checkbox"/>	✓			
10E-9 Soni-2 1:10		<input type="checkbox"/>	✓			
Ladder		<input type="checkbox"/>	✓			

Chip Lot #

Reagent Kit Lot #

Chip Comments :

Assay Class: High Sensitivity DNA Assay
Data Path: C:\...ents and Settings\Bioanalyzer\2012-05-24\2012-05-24_005.xad

Created: 5/24/2012 5:44:42 PM
Modified: 5/25/2012 9:37:23 AM

Electrophoresis Assay Details

General Analysis Settings

Number of Available Sample and Ladder Wells (Max.) : 12
Minimum Visible Range [s] : 32
Maximum Visible Range [s] : 138
Start Analysis Time Range [s] : 33
End Analysis Time Range [s] : 137.5
Ladder Concentration [pg/μl] : 1950
Uses Standard Area for Ladder Fragments
Lower Marker Concentration [pg/μl] : 125
Upper Marker Concentration [pg/μl] : 75
Used Upper Marker for Quantitation
Standard Curve Fit is Point to Point
Show Data Aligned to Lower and Upper Marker

Integrator Settings

Integration Start Time [s] : 33.05
Integration End Time [s] : 137
Slope Threshold : 0.8
Height Threshold [FU] : 5
Area Threshold : 0.1
Width Threshold [s] : 0.6
Baseline Plateau [s] : 0.5

Filter Settings

Filter Width [s] : 0.5
Polynomial Order : 4

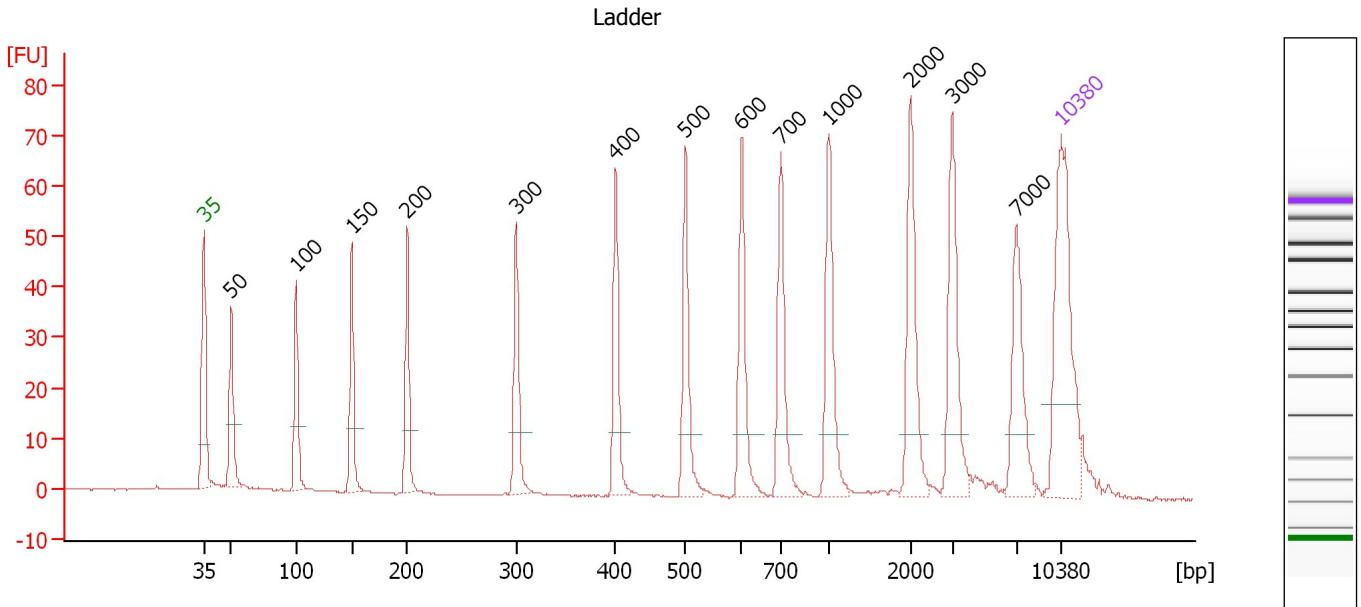
Ladder

Ladder Peak	Size	Area
1	35	160
2	50	210
3	100	208
4	150	221
5	200	242
6	300	270
7	400	305
8	500	306
9	600	336
10	700	321
11	1000	366
12	2000	413
13	3000	411
14	7000	400
15	10380	214

Assay Class: High Sensitivity DNA Assay
 Data Path: C:\...ents and Settings\Bioanalyzer\2012-05-24\2012-05-24_005.xad

Created: 5/24/2012 5:44:42 PM
 Modified: 5/25/2012 9:37:23 AM

Electropherogram Summary



Overall Results for Ladder

Noise: 0.1

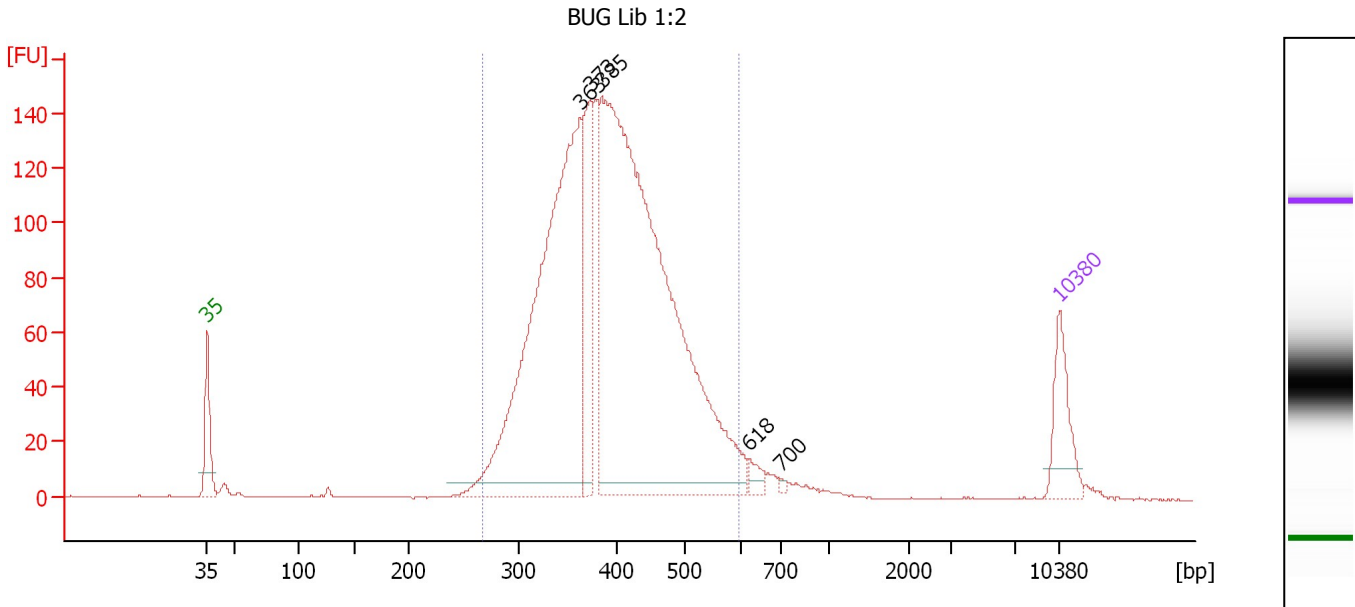
Peak table for Ladder

Peak	Size [bp]	Conc. [pg/μl]	Molarity [pmol/l]	Observations
1	35	125.00	5,411.3	Lower Marker
2	50	150.00	4,545.5	Ladder Peak
3	100	150.00	2,272.7	Ladder Peak
4	150	150.00	1,515.2	Ladder Peak
5	200	150.00	1,136.4	Ladder Peak
6	300	150.00	757.6	Ladder Peak
7	400	150.00	568.2	Ladder Peak
8	500	150.00	454.5	Ladder Peak
9	600	150.00	378.8	Ladder Peak
10	700	150.00	324.7	Ladder Peak
11	1,000	150.00	227.3	Ladder Peak
12	2,000	150.00	113.6	Ladder Peak
13	3,000	150.00	75.8	Ladder Peak
14	7,000	150.00	32.5	Ladder Peak
15	10,380	75.00	10.9	Upper Marker

Assay Class: High Sensitivity DNA Assay
 Data Path: C:\...ents and Settings\Bioanalyzer\2012-05-24\2012-05-24_005.xad

Created: 5/24/2012 5:44:42 PM
 Modified: 5/25/2012 9:37:23 AM

Electropherogram Summary Continued ...



Overall Results for sample 1 : BUG Lib 1:2

Number of peaks found: 5 Corr. Area 1: 2,354.1
 Noise: 0.2

Peak table for sample 1 : BUG Lib 1:2

Peak	Size [bp]	Conc. [pg/μl]	Molarity [pmol/l]	Observations
1	35	125.00	5,411.3	Lower Marker
2	363	1,042.88	4,351.7	
3	373	207.06	840.2	
4	385	1,561.15	6,139.3	
5	618	19.71	48.3	
6	700	4.13	9.0	
7	10,380	75.00	10.9	Upper Marker

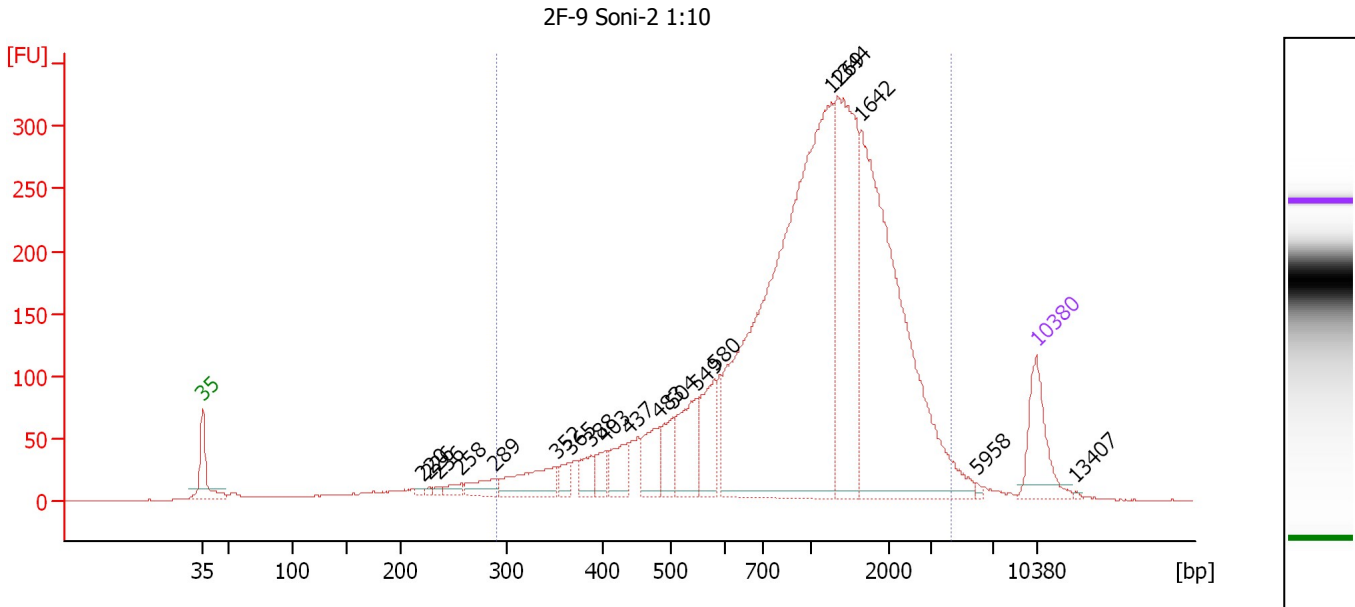
Region table for sample 1 : BUG Lib 1:2

From [bp]	To [bp]	Average Size [bp]	Molarity [pmol/l]	Conc. [pg/μl]	Corr. Area	% of Total	Size distribution in CV [%]	Color
267	597	399	11,518.9	2,930.69	2,354.1	95	16.8	Blue

Assay Class: High Sensitivity DNA Assay
 Data Path: C:\...ents and Settings\Bioanalyzer\2012-05-24\2012-05-24_005.xad

Created: 5/24/2012 5:44:42 PM
 Modified: 5/25/2012 9:37:23 AM

Electropherogram Summary Continued ...



Overall Results for sample 2 : 2F-9 Soni-2 1:10

Number of peaks found: 19 Corr. Area 1: 5,178.9
 Noise: 0.2

Peak table for sample 2 : 2F-9 Soni-2 1:10

Peak	Size [bp]	Conc. [pg/μl]	Molarity [pmol/l]	Observations
1	35	125.00	5,411.3	Lower Marker
2	220	5.45	37.6	
3	226	4.48	30.0	
4	236	5.98	38.3	
5	258	16.48	96.9	
6	289	35.20	184.4	
7	352	85.09	366.6	
8	365	24.42	101.3	
9	388	35.04	136.8	
10	403	32.36	121.7	
11	437	56.08	194.6	
12	483	65.46	205.4	
13	504	49.21	147.9	
14	549	107.45	296.4	
15	580	87.47	228.6	
16	1,269	1,011.39	1,207.2	
17	1,344	344.54	388.5	
18	1,642	589.39	544.0	
19	5,958	2.86	0.7	
20	10,380	75.00	10.9	Upper Marker
21	13,407	0.00	0.0	

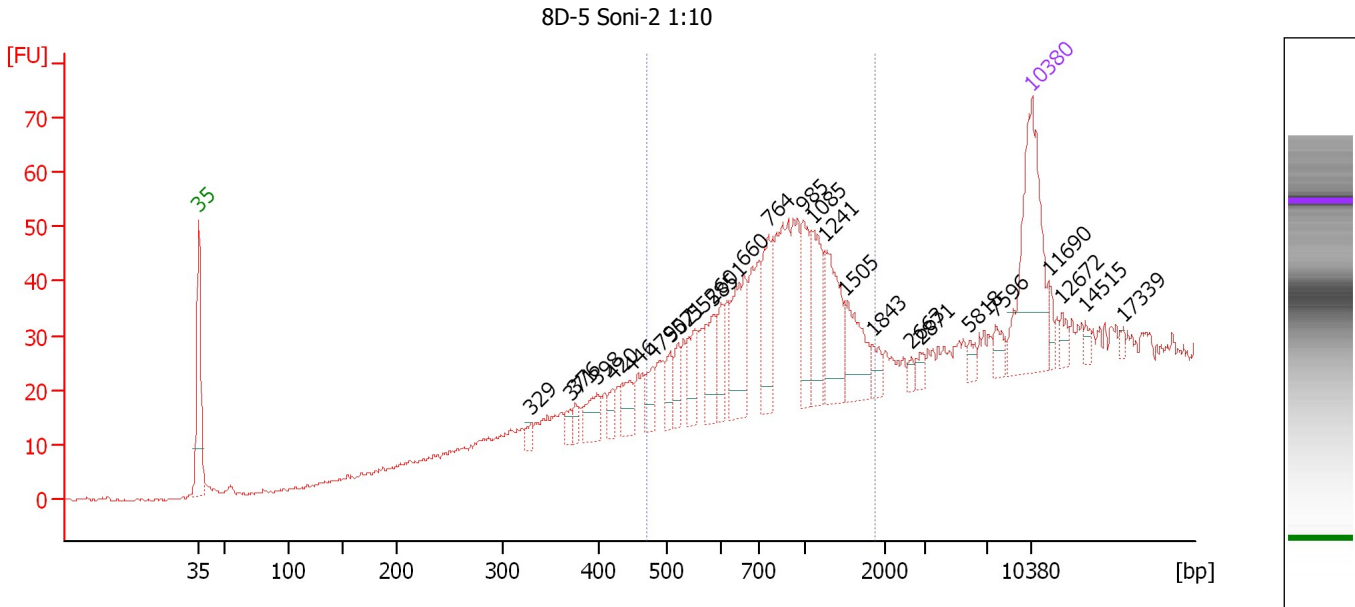
Region table for sample 2 : 2F-9 Soni-2 1:10

From [bp]	To [bp]	Average Size [bp]	Molarity [pmol/l]	Conc. [pg/μl]	Corr. Area	% of Total	Size distribution in CV [%]	Color
290	4,296	1,221	5,153.6	2,737.04	5,178.9	93	56.3	Blue

Assay Class: High Sensitivity DNA Assay
 Data Path: C:\...ents and Settings\Bioanalyzer\2012-05-24\2012-05-24_005.xad

Created: 5/24/2012 5:44:42 PM
 Modified: 5/25/2012 9:37:23 AM

Electropherogram Summary Continued ...



Overall Results for sample 3 : 8D-5 Soni-2 1:10

Number of peaks found: 27 Corr. Area 1: 465.6
 Noise: 0.3

Peak table for sample 3 : 8D-5 Soni-2 1:10

Peak	Size [bp]	Conc. [pg/μl]	Molarity [pmol/l]	Observations
1	35	125.00	5,411.3	Lower Marker
2	329	6.03	27.8	
3	371	7.44	30.4	
4	376	7.04	28.3	
5	398	20.44	77.7	
6	420	8.26	29.8	
7	446	18.02	61.2	
8	479	13.51	42.7	
9	507	12.90	38.6	
10	521	12.77	37.1	
11	552	23.46	64.4	
12	585	26.18	67.8	
13	601	16.04	40.4	
14	660	47.17	108.2	
15	764	35.43	70.2	
16	985	30.32	46.6	
17	1,085	34.61	48.3	
18	1,241	43.67	53.3	
19	1,505	30.91	31.1	
20	1,843	7.55	6.2	
21	2,663	3.15	1.8	
22	2,871	5.27	2.8	
23	5,818	5.19	1.4	
24	7,596	7.60	1.5	
25	10,380	75.00	10.9	Upper Marker
26	11,690	0.00	0.0	

Assay Class: High Sensitivity DNA Assay
Data Path: C:\...ents and Settings\Bioanalyzer\2012-05-24\2012-05-24_005.xad

Created: 5/24/2012 5:44:42 PM
Modified: 5/25/2012 9:37:23 AM

Electropherogram Summary Continued ...**... Peak table for sample 3 : 8D-5 Soni-2 1:10**

Peak	Size [bp]	Conc. [pg/μl]	Molarity [pmol/l]	Observations
27	12,672	0.00	0.0	
28	14,515	0.00	0.0	
29	17,339	0.00	0.0	

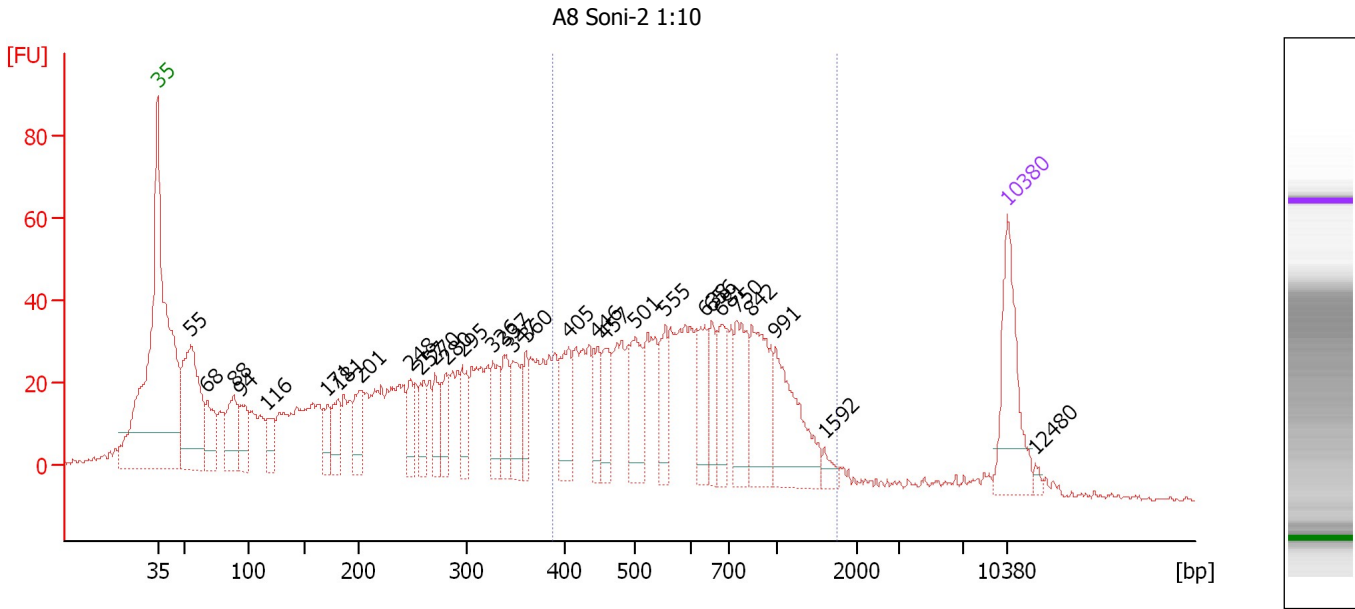
Region table for sample 3 : 8D-5 Soni-2 1:10

From [bp]	To [bp]	Average Size [bp]	Molarity [pmol/l]	Conc. [pg/μl]	Corr. Area	% of Total	Size distribution in CV [%]	Color
470	1,884	892	1,007.4	506.78	465.6	68	38.3	

Assay Class: High Sensitivity DNA Assay
 Data Path: C:\...ents and Settings\Bioanalyzer\2012-05-24\2012-05-24_005.xad

Created: 5/24/2012 5:44:42 PM
 Modified: 5/25/2012 9:37:23 AM

Electropherogram Summary Continued ...



Overall Results for sample 4 : A8 Soni-2 1:10

Number of peaks found: 30 Corr. Area 1: 858.9
 Noise: 0.7

Peak table for sample 4 : A8 Soni-2 1:10

Peak	Size [bp]	Conc. [pg/μl]	Molarity [pmol/l]	Observations
1	35	125.00	5,411.3	Lower Marker
2	55	200.63	5,555.5	
3	68	58.18	1,305.4	
4	88	66.15	1,135.3	
5	94	51.21	829.0	
6	116	31.93	415.9	
7	171	28.86	255.4	
8	181	41.10	343.9	
9	201	46.17	348.4	
10	248	32.15	196.8	
11	257	31.42	185.2	
12	270	38.58	216.4	
13	280	34.32	185.6	
14	295	40.07	205.5	
15	326	44.71	207.7	
16	337	42.84	192.5	
17	347	50.97	222.9	
18	360	31.71	133.5	
19	405	56.24	210.6	
20	446	35.30	120.0	
21	457	39.72	131.8	
22	501	62.26	188.2	
23	555	39.88	109.0	
24	638	46.35	110.1	
25	656	32.88	76.0	
26	681	47.08	104.8	

Assay Class: High Sensitivity DNA Assay
 Data Path: C:\...ents and Settings\Bioanalyzer\2012-05-24\2012-05-24_005.xad


Created: 5/24/2012 5:44:42 PM
 Modified: 5/25/2012 9:37:23 AM

Electropherogram Summary Continued ...

... Peak table for sample 4 : A8 Soni-2 1:10

Peak	Size [bp]	Conc. [pg/μl]	Molarity [pmol/l]	Observations
27	750	61.76	124.8	
28	842	87.66	157.7	
29	991	90.51	138.3	
30	1,592	9.96	9.5	
31	10,380	75.00	10.9	Upper Marker
32	12,480	0.00	0.0	

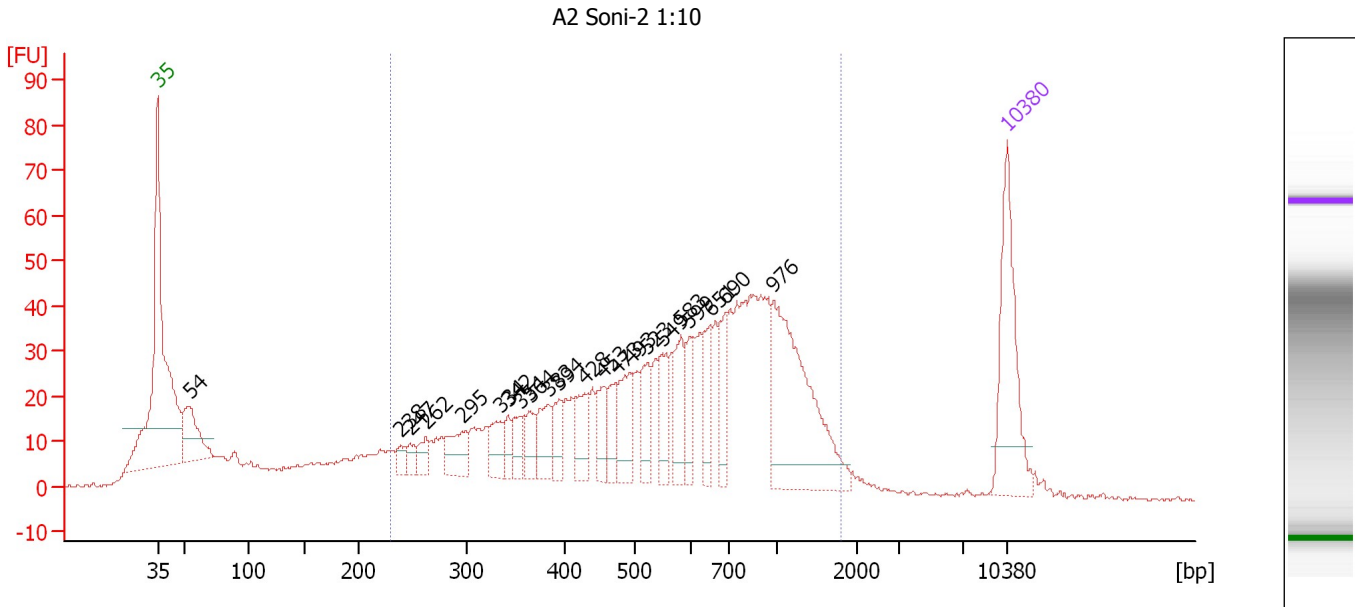
Region table for sample 4 : A8 Soni-2 1:10

From [bp]	To [bp]	Average Size [bp]	Molarity [pmol/l]	Conc. [pg/μl]	Corr. Area	% of Total	Size distribution in CV [%]	Color
387	1,745	672	2,565.2	978.86	858.9	43	39.4	

Assay Class: High Sensitivity DNA Assay
 Data Path: C:\...ents and Settings\Bioanalyzer\2012-05-24\2012-05-24_005.xad

Created: 5/24/2012 5:44:42 PM
 Modified: 5/25/2012 9:37:23 AM

Electropherogram Summary Continued ...



Overall Results for sample 5 : A2 Soni-2 1:10

Number of peaks found: 22 Corr. Area 1: 1,096.7
 Noise: 0.2

Peak table for sample 5 : A2 Soni-2 1:10


Peak	Size [bp]	Conc. [pg/μl]	Molarity [pmol/l]	Observations
1	35	125.00	5,411.3	Lower Marker
2	54	59.96	1,688.0	
3	238	10.85	69.0	
4	247	10.37	63.7	
5	262	15.03	87.0	
6	295	32.03	164.5	
7	334	24.78	112.4	
8	342	13.69	60.7	
9	354	21.10	90.4	
10	364	23.09	96.1	
11	383	30.95	122.5	
12	394	22.04	84.9	
13	428	28.54	101.1	
14	453	26.41	88.3	
15	473	25.64	82.1	
16	493	37.64	115.6	
17	523	30.90	89.6	
18	549	32.51	89.8	
19	583	33.93	88.1	
20	599	23.46	59.3	
21	651	27.43	63.8	
22	690	31.70	69.6	
23	976	147.28	228.5	
24	10,380	75.00	10.9	Upper Marker

Assay Class: High Sensitivity DNA Assay
Data Path: C:\...ents and Settings\Bioanalyzer\2012-05-24\2012-05-24_005.xad

Created: 5/24/2012 5:44:42 PM
Modified: 5/25/2012 9:37:23 AM

Electropherogram Summary Continued ...

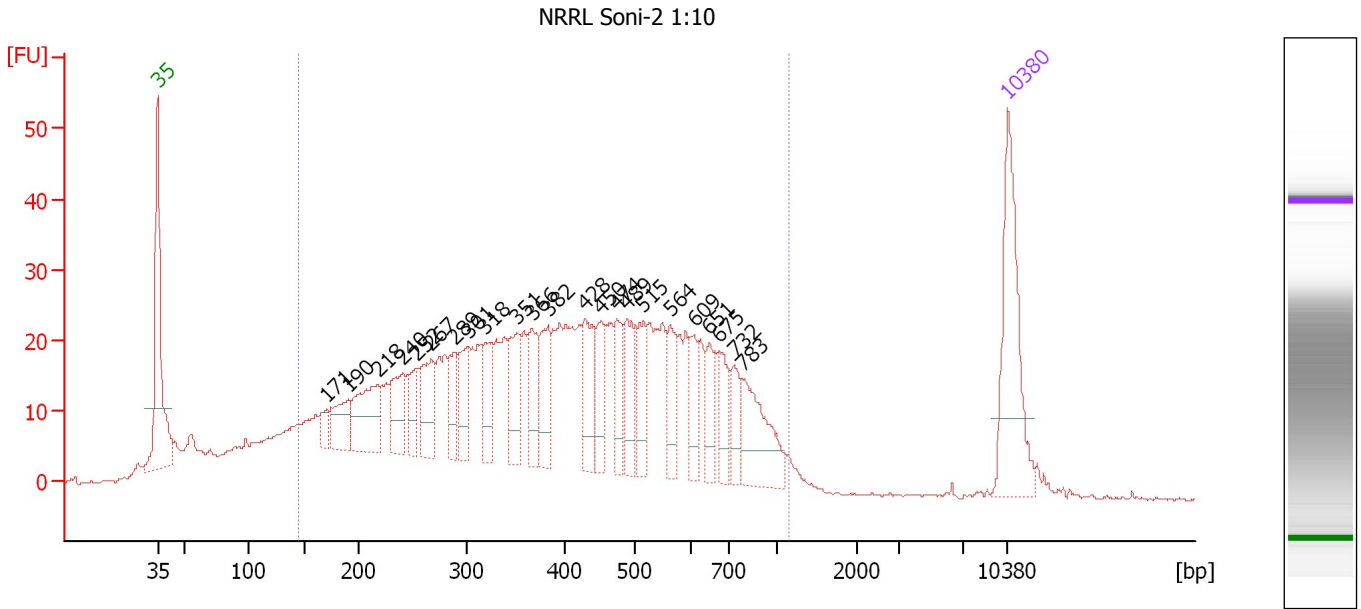
... Region table for sample 5 : A2 Soni-2 1:10

From [bp]	To [bp]	Average Size [bp]	Molarity [pmol/l]	Conc. [pg/ μ l]	Corr. Area	% of Total	Size distribution in CV [%]	Color
230	1,793	664	3,644.9	1,168.20	1,096.7	79	49.9	

Assay Class: High Sensitivity DNA Assay
 Data Path: C:\...ents and Settings\Bioanalyzer\2012-05-24\2012-05-24_005.xad

Created: 5/24/2012 5:44:42 PM
 Modified: 5/25/2012 9:37:23 AM

Electropherogram Summary Continued ...



Overall Results for sample 6 : NRRL Soni-2 1:10

Number of peaks found: 23 Corr. Area 1: 997.6
 Noise: 0.1

Peak table for sample 6 : NRRL Soni-2 1:10

Peak	Size [bp]	Conc. [pg/μl]	Molarity [pmol/l]	Observations
1	35	125.00	5,411.3	Lower Marker
2	171	12.47	110.7	
3	190	34.38	274.2	
4	218	62.20	433.1	
5	240	40.57	255.7	
6	252	26.56	159.4	
7	267	46.28	263.1	
8	289	24.55	128.8	
9	301	36.65	184.2	
10	318	33.83	161.0	
11	351	37.98	164.1	
12	366	36.28	150.3	
13	382	41.58	165.0	
14	428	43.89	155.4	
15	450	33.78	113.8	
16	474	31.79	101.7	
17	489	39.28	121.7	
18	515	34.25	100.7	
19	564	29.51	79.3	
20	609	22.26	55.3	
21	651	22.40	52.2	
22	675	25.05	56.2	
23	732	21.29	44.1	
24	783	57.19	110.7	
25	10,380	75.00	10.9	Upper Marker

Assay Class: High Sensitivity DNA Assay
Data Path: C:\...ents and Settings\Bioanalyzer\2012-05-24\2012-05-24_005.xad

Created: 5/24/2012 5:44:42 PM
Modified: 5/25/2012 9:37:23 AM

Electropherogram Summary Continued ...

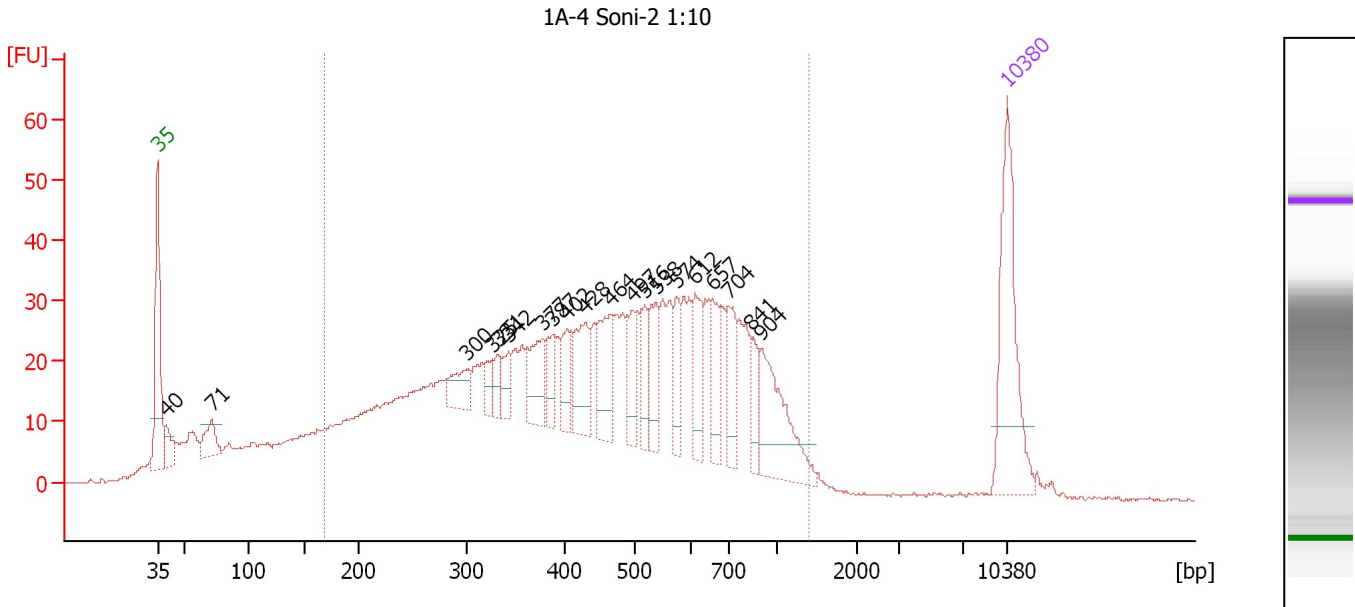
... Region table for sample 6 : NRRL Soni-2 1:10

From [bp]	To [bp]	Average Size [bp]	Molarity [pmol/l]	Conc. [pg/μl]	Corr. Area	% of Total	Size distribution in CV [%]	Color
145	1,152	431	7,562.6	1,618.72	997.6	88	43.2	■

Assay Class: High Sensitivity DNA Assay
 Data Path: C:\...ents and Settings\Bioanalyzer\2012-05-24\2012-05-24_005.xad

Created: 5/24/2012 5:44:42 PM
 Modified: 5/25/2012 9:37:23 AM

Electropherogram Summary Continued ...



Overall Results for sample 7 : 1A-4 Soni-2 1:10

Number of peaks found: 20 Corr. Area 1: 1,164.0
 Noise: 0.2

Peak table for sample 7 : 1A-4 Soni-2 1:10

Peak	Size [bp]	Conc. [pg/μl]	Molarity [pmol/l]	Observations
1	35	125.00	5,411.3	Lower Marker
2	40	20.32	770.7	
3	71	25.01	533.7	
4	300	24.33	122.8	
5	325	11.42	53.2	
6	331	12.43	56.9	
7	342	14.00	62.0	
8	377	36.67	147.4	
9	387	20.94	82.0	
10	402	24.62	92.9	
11	428	40.83	144.5	
12	464	43.35	141.5	
13	497	32.45	99.0	
14	516	22.90	67.2	
15	538	29.86	84.1	
16	574	23.08	60.9	
17	612	32.11	79.5	
18	657	30.42	70.2	
19	704	33.18	71.4	
20	841	18.70	33.7	
21	904	62.87	105.4	
22	10,380	75.00	10.9	Upper Marker

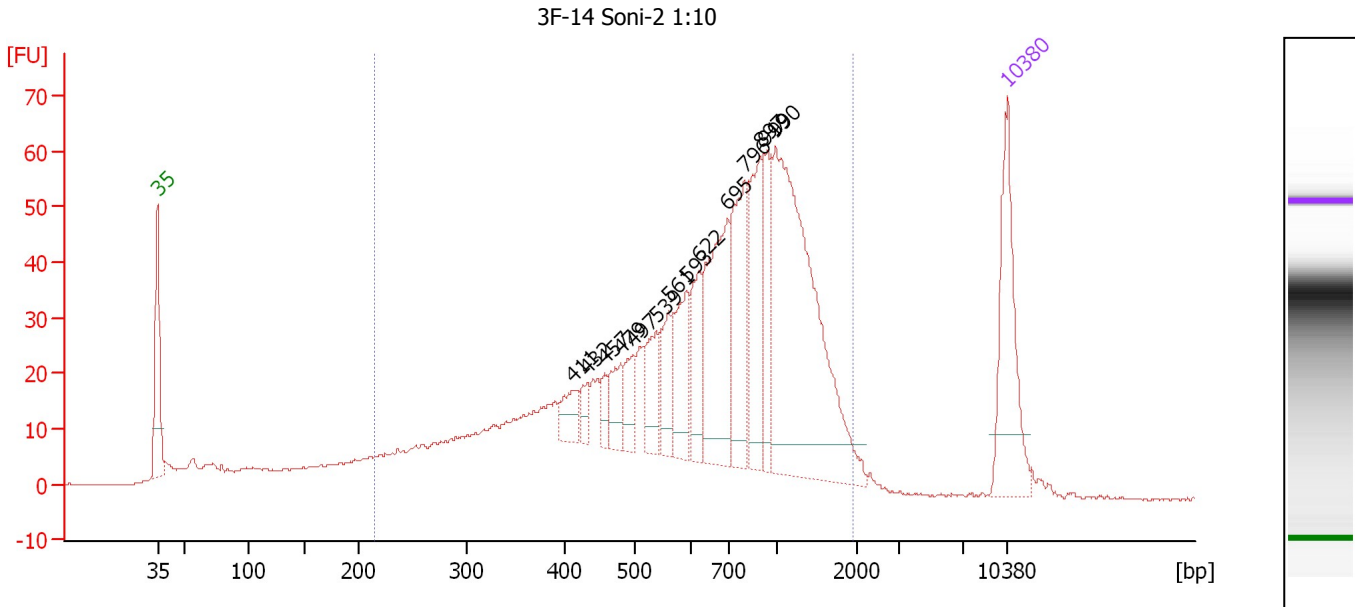
Region table for sample 7 : 1A-4 Soni-2 1:10

From [bp]	To [bp]	Average Size [bp]	Molarity [pmol/l]	Conc. [pg/μl]	Corr. Area	% of Total	Size distribution in CV [%]	Color
169	1,388	494	6,350.9	1,552.84	1,164.0	83	45.0	Blue

Assay Class: High Sensitivity DNA Assay
 Data Path: C:\...ents and Settings\Bioanalyzer\2012-05-24\2012-05-24_005.xad

Created: 5/24/2012 5:44:42 PM
 Modified: 5/25/2012 9:37:23 AM

Electropherogram Summary Continued ...



Overall Results for sample 8 : 3F-14 Soni-2 1:10

Number of peaks found: 14 Corr. Area 1: 1,184.7
 Noise: 0.1

Peak table for sample 8 : 3F-14 Soni-2 1:10

Peak	Size [bp]	Conc. [pg/μl]	Molarity [pmol/l]	Observations
1	35	125.00	5,411.3	Lower Marker
2	411	21.72	80.1	
3	432	13.04	45.8	
4	457	12.74	42.2	
5	479	26.89	85.0	
6	497	23.41	71.3	
7	539	34.89	98.1	
8	561	32.92	88.8	
9	593	50.71	129.6	
10	622	41.80	101.8	
11	695	116.60	254.2	
12	796	85.65	163.1	
13	897	74.68	126.2	
14	919	42.21	69.6	
15	990	263.69	403.6	
16	10,380	75.00	10.9	Upper Marker

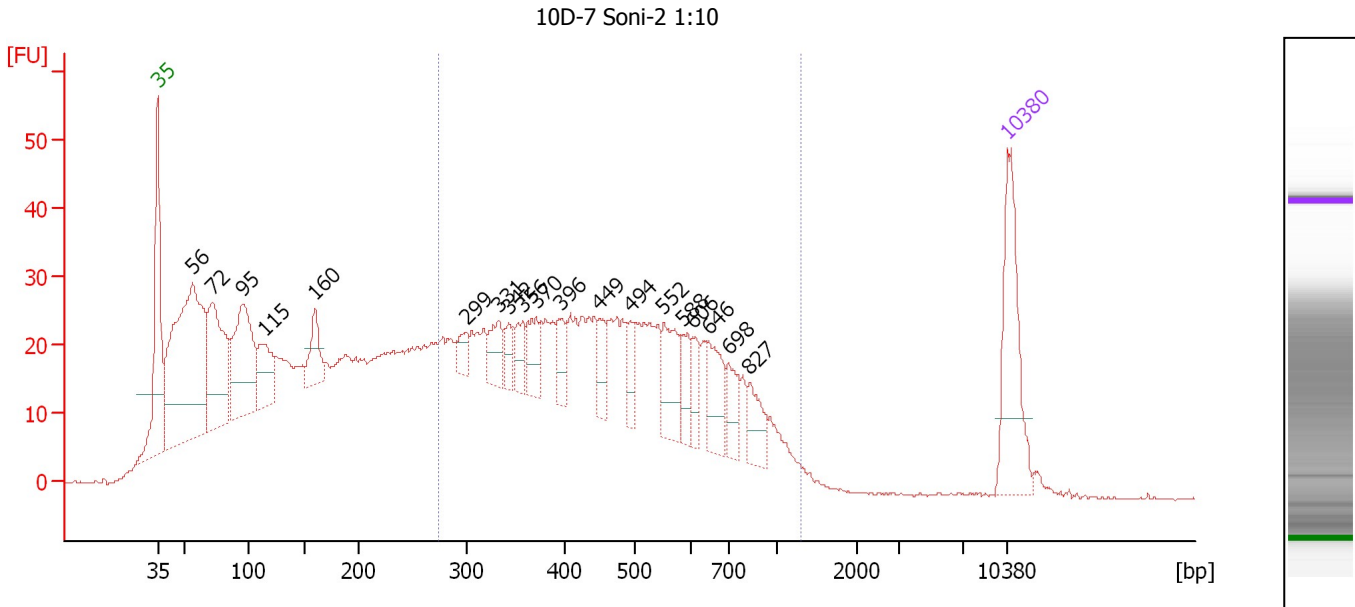
Region table for sample 8 : 3F-14 Soni-2 1:10

From [bp]	To [bp]	Average Size [bp]	Molarity [pmol/l]	Conc. [pg/μl]	Corr. Area	% of Total	Size distribution in CV [%]	Color
215	1,950	762	3,865.0	1,375.08	1,184.7	89	49.7	Blue

Assay Class: High Sensitivity DNA Assay
 Data Path: C:\...ents and Settings\Bioanalyzer\2012-05-24\2012-05-24_005.xad

Created: 5/24/2012 5:44:42 PM
 Modified: 5/25/2012 9:37:23 AM

Electropherogram Summary Continued ...



Overall Results for sample 9 : 10D-7 Soni-2 1:10

Number of peaks found: 19 Corr. Area 1: 800.2
 Noise: 0.1

Peak table for sample 9 : 10D-7 Soni-2 1:10

Peak	Size [bp]	Conc. [pg/μl]	Molarity [pmol/l]	Observations
1	35	125.00	5,411.3	Lower Marker
2	56	351.23	9,441.9	
3	72	143.97	3,035.1	
4	95	137.40	2,182.8	
5	115	56.55	745.2	
6	160	38.00	359.4	
7	299	16.04	81.3	
8	331	28.11	128.5	
9	342	18.26	80.9	
10	356	21.74	92.5	
11	370	31.14	127.4	
12	396	23.32	89.3	
13	449	21.17	71.5	
14	494	20.30	62.2	
15	552	46.50	127.6	
16	588	23.93	61.6	
17	606	17.90	44.7	
18	646	38.96	91.4	
19	698	25.14	54.6	
20	827	26.54	48.6	
21	10,380	75.00	10.9	Upper Marker

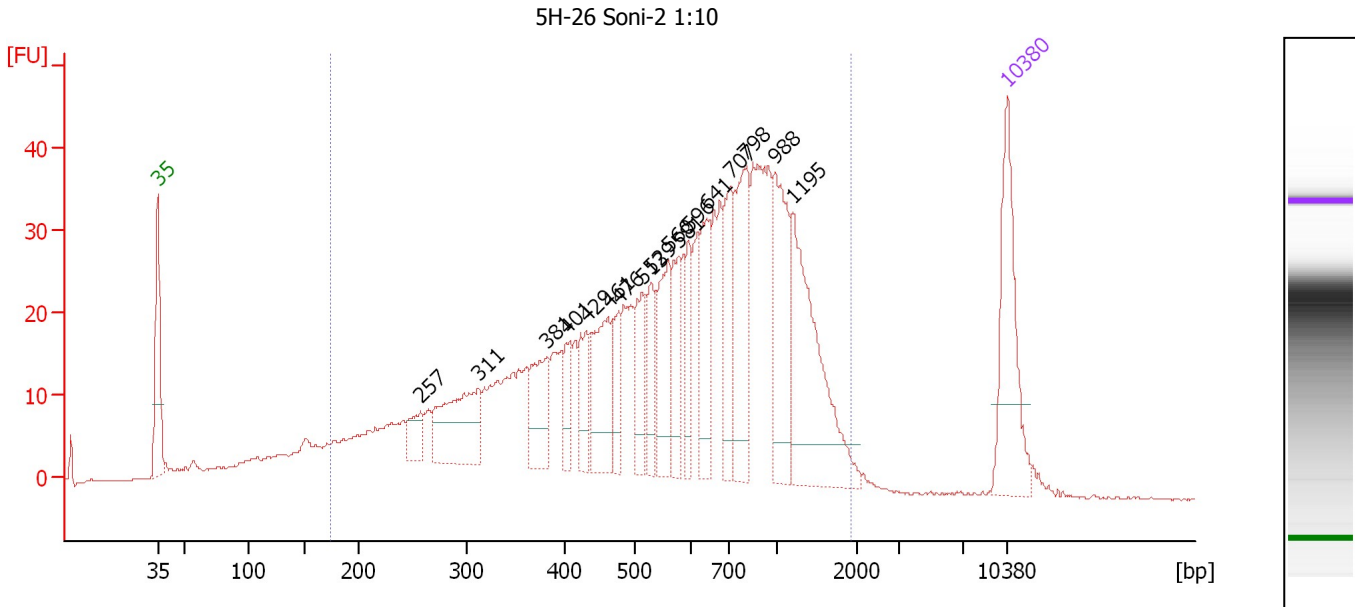
Region table for sample 9 : 10D-7 Soni-2 1:10

From [bp]	To [bp]	Average Size [bp]	Molarity [pmol/l]	Conc. [pg/μl]	Corr. Area	% of Total	Size distribution in CV [%]	Color
273	1,304	491	4,871.0	1,352.48	800.2	47	37.0	Blue

Assay Class: High Sensitivity DNA Assay
 Data Path: C:\...ents and Settings\Bioanalyzer\2012-05-24\2012-05-24_005.xad

Created: 5/24/2012 5:44:42 PM
 Modified: 5/25/2012 9:37:23 AM

Electropherogram Summary Continued ...



Overall Results for sample 10 : 5H-26 Soni-2 1:10

Number of peaks found: 17 Corr. Area 1: 980.5
 Noise: 0.2

Peak table for sample 10 : 5H-26 Soni-2 1:10

Peak	Size [bp]	Conc. [pg/µl]	Molarity [pmol/l]	Observations
1	35	125.00	5,411.3	Lower Marker
2	257	24.87	146.8	
3	311	90.51	440.8	
4	381	49.02	194.9	
5	401	23.20	87.6	
6	429	32.12	113.4	
7	461	71.81	236.1	
8	476	27.66	88.1	
9	513	41.29	122.0	
10	529	35.51	101.7	
11	560	60.77	164.5	
12	581	40.68	106.2	
13	596	34.19	86.9	
14	641	52.76	124.6	
15	707	52.68	112.9	
16	798	85.76	162.8	
17	988	82.84	127.1	
18	1,195	133.53	169.3	
19	10,380	75.00	10.9	Upper Marker

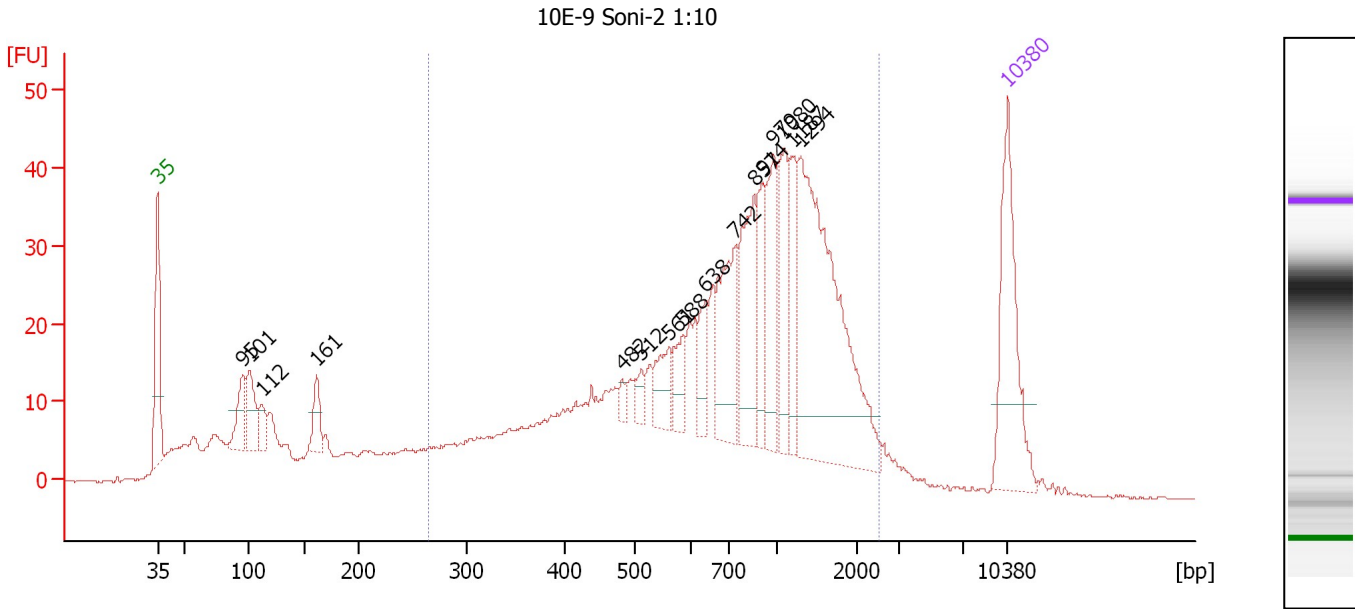
Region table for sample 10 : 5H-26 Soni-2 1:10

From [bp]	To [bp]	Average Size [bp]	Molarity [pmol/l]	Conc. [pg/µl]	Corr. Area	% of Total	Size distribution in CV [%]	Color
174	1,918	667	5,740.8	1,724.98	980.5	92	52.8	Blue

Assay Class: High Sensitivity DNA Assay
 Data Path: C:\...ents and Settings\Bioanalyzer\2012-05-24\2012-05-24_005.xad

Created: 5/24/2012 5:44:42 PM
 Modified: 5/25/2012 9:37:23 AM

Electropherogram Summary Continued ...



Overall Results for sample 11 : 10E-9 Soni-2 1:10

Number of peaks found: 16 Corr. Area 1: 776.1
 Noise: 0.2

Peak table for sample 11 : 10E-9 Soni-2 1:10

Peak	Size [bp]	Conc. [pg/μl]	Molarity [pmol/l]	Observations
1	35	125.00	5,411.3	Lower Marker
2	95	34.74	552.6	
3	101	39.34	592.7	
4	112	16.16	219.2	
5	161	23.78	223.3	
6	482	6.38	20.1	
7	512	10.09	29.8	
8	561	25.68	69.3	
9	588	22.31	57.5	
10	638	20.07	47.7	
11	742	67.40	137.7	
12	857	70.01	123.8	
13	914	36.27	60.1	
14	979	51.27	79.3	
15	1,080	47.25	66.3	
16	1,187	35.34	45.1	
17	1,294	201.40	235.8	
18	10,380	75.00	10.9	Upper Marker

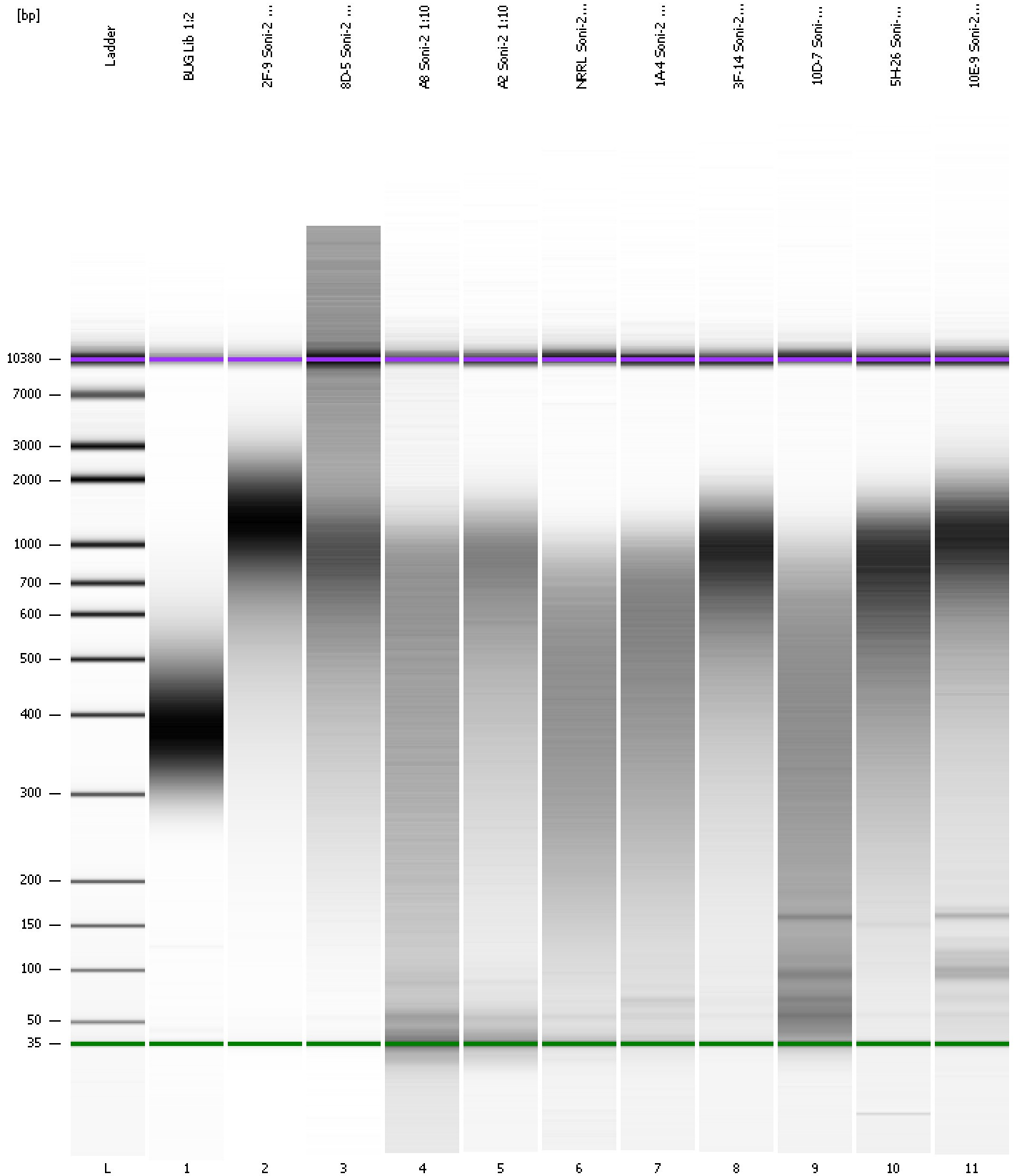
Region table for sample 11 : 10E-9 Soni-2 1:10

From [bp]	To [bp]	Average Size [bp]	Molarity [pmol/l]	Conc. [pg/μl]	Corr. Area	% of Total	Size distribution in CV [%]	Color
265	2,499	922	2,801.9	1,169.40	776.1	76	52.9	Blue

Assay Class: High Sensitivity DNA Assay
Data Path: C:\...ents and Settings\Bioanalyzer\2012-05-24\2012-05-24_005.xad

Created: 5/24/2012 5:44:42 PM
Modified: 5/25/2012 9:37:23 AM

Gel Image



Assay Class: High Sensitivity DNA Assay
 Data Path: C:\...ents and Settings\Bioanalyzer\2012-05-24\2012-05-24_005.xad

Created: 5/24/2012 5:44:42 PM
 Modified: 5/25/2012 9:37:23 AM

Run Logbook

Description	Number	Source	Category	Sub Category	Time	Time Zone	User	Host
Run ended on port 1 (Number of wells acquired: 12)		Instrument	Run		5/24/2012 6:26:01 PM	(GMT --07:00) Pacific Standard Time	UC Davis	D8XSMGH1
Run started on port 1 (File: C:\Documents and Settings\Bioanalyzer\2012-05-24\2012-05-24_005.xad)		Instrument	Run		5/24/2012 5:44:47 PM	(GMT --07:00) Pacific Standard Time	UC Davis	D8XSMGH1
Product Number : G2938B		Instrument	Run		5/24/2012 5:44:47 PM	(GMT --07:00) Pacific Standard Time	UC Davis	D8XSMGH1
Name :		Instrument	Run		5/24/2012 5:44:47 PM	(GMT --07:00) Pacific Standard Time	UC Davis	D8XSMGH1
Vendor : Agilent Technologies		Instrument	Run		5/24/2012 5:44:47 PM	(GMT --07:00) Pacific Standard Time	UC Davis	D8XSMGH1
Serial# : DE13701086		Instrument	Run		5/24/2012 5:44:47 PM	(GMT --07:00) Pacific Standard Time	UC Davis	D8XSMGH1
Firmware : C.01.069		Instrument	Run		5/24/2012 5:44:47 PM	(GMT --07:00) Pacific Standard Time	UC Davis	D8XSMGH1
Cartridge : Electrode		Instrument	Run		5/24/2012 5:44:47 PM	(GMT --07:00) Pacific Standard Time	UC Davis	D8XSMGH1