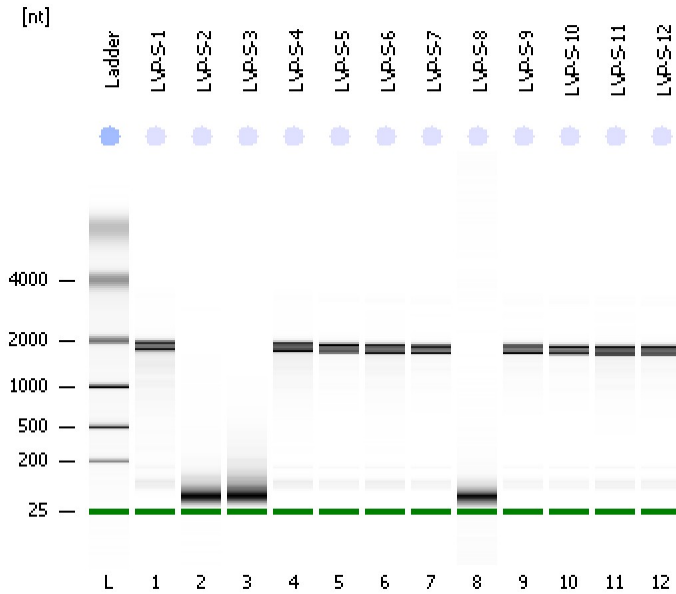


Assay Class: Eukaryote Total RNA Nano
Data Path: C:\...ents and Settings\Bioanalyzer\2012-05-25\2012-05-25_002.xad

Created: 5/25/2012 4:42:15 PM
Modified: 5/25/2012 5:06:05 PM

Electrophoresis File Run Summary



Instrument Information:

Instrument Name: DE13701086 Firmware: C.01.069
Serial#: DE13701086 Type: G2938B

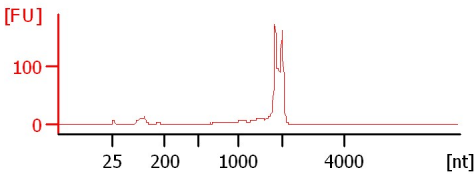
Assay Information:

Assay Origin Path: C:\Program Files\Agilent\2100 bioanalyzer\2100 expert\assays\RNA\Eukaryote Total RNA Nano Series II.xsy
Assay Class: Eukaryote Total RNA Nano
Version: 2.6
Assay Comments: Total RNA Analysis ng sensitivity (Eukaryote)
© Copyright 2003 - 2009 Agilent Technologies, Inc.

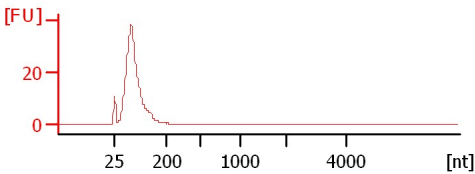
Chip Information:

Chip Lot #:
Reagent Kit Lot #:
Chip Comments:

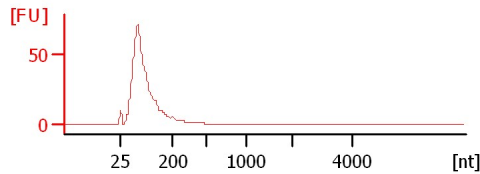
LVP-S-1
RIN: 5.60



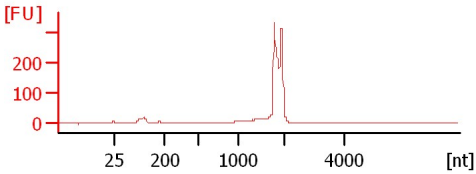
LVP-S-2
RIN: 2.60



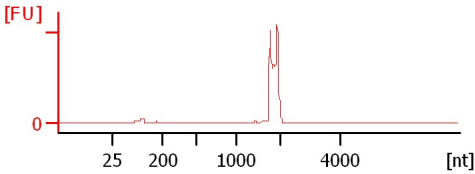
LVP-S-3
RIN: 2.50



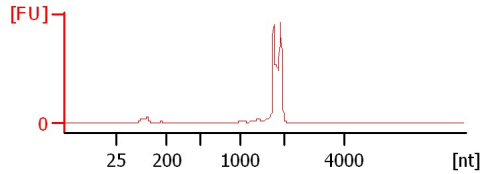
LVP-S-4
RIN: 6.60



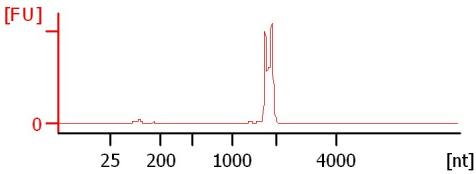
LVP-S-5
RIN: 5.30



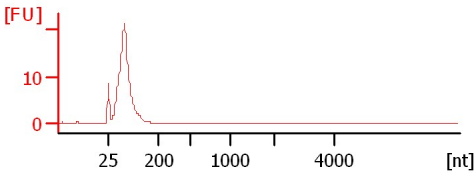
LVP-S-6
RIN: 5.20



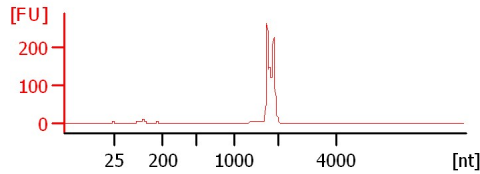
LVP-S-7
RIN: 6.50



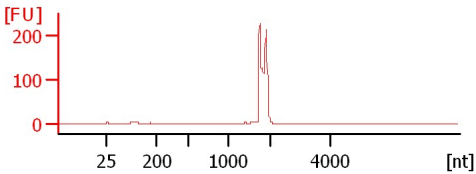
LVP-S-8
RIN: 2.60



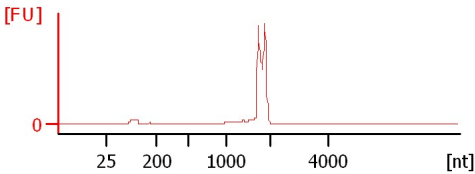
LVP-S-9
RIN: 7.60



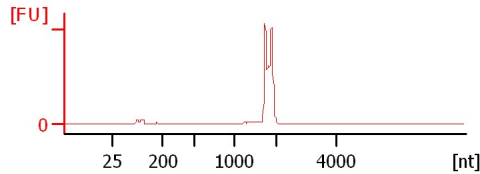
LVP-S-10
RIN: 7.30



LVP-S-11
RIN: 5.30



LVP-S-12
RIN: 5.20



Assay Class: Eukaryote Total RNA Nano
 Data Path: C:\...ents and Settings\Bioanalyzer\2012-05-25\2012-05-25_002.xad

Created: 5/25/2012 4:42:15 PM
 Modified: 5/25/2012 5:06:05 PM

Electrophoresis File Run Summary (Chip Summary)

Sample Name	Sample Comment	Status	Result Label	Result Color
LVP-S-1		✓	RIN: 5.60	
LVP-S-2		✓	RIN: 2.60	
LVP-S-3		✓	RIN: 2.50	
LVP-S-4		✓	RIN: 6.60	
LVP-S-5		✓	RIN: 5.30	
LVP-S-6		✓	RIN: 5.20	
LVP-S-7		✓	RIN: 6.50	
LVP-S-8		✓	RIN: 2.60	
LVP-S-9		✓	RIN: 7.60	
LVP-S-10		✓	RIN: 7.30	
LVP-S-11		✓	RIN: 5.30	
LVP-S-12		✓	RIN: 5.20	
Ladder		✓	All Other Samples	

Chip Lot #

Reagent Kit Lot #

Chip Comments :

Assay Class: Eukaryote Total RNA Nano
Data Path: C:\...ents and Settings\Bioanalyzer\2012-05-25\2012-05-25_002.xad

Created: 5/25/2012 4:42:15 PM
Modified: 5/25/2012 5:06:05 PM

Electrophoresis Assay Details

General Analysis Settings

Number of Available Sample and Ladder Wells (Max.) : 13
Minimum Visible Range [s] : 17
Maximum Visible Range [s] : 70
Start Analysis Time Range [s] : 19
End Analysis Time Range [s] : 69
Ladder Concentration [ng/ μ l] : 150
Lower Marker Concentration [ng/ μ l] : 0
Upper Marker Concentration [ng/ μ l] : 0
Used Lower Marker for Quantitation
Standard Curve Fit is Logarithmic
Show Data Aligned to Lower Marker

Integrator Settings

Integration Start Time [s] : 19
Integration End Time [s] : 69
Slope Threshold : 0.6
Height Threshold [FU] : 0.5
Area Threshold : 0.2
Width Threshold [s] : 0.5
Baseline Plateau [s] : 6

Filter Settings

Filter Width [s] : 0.5
Polynomial Order : 4

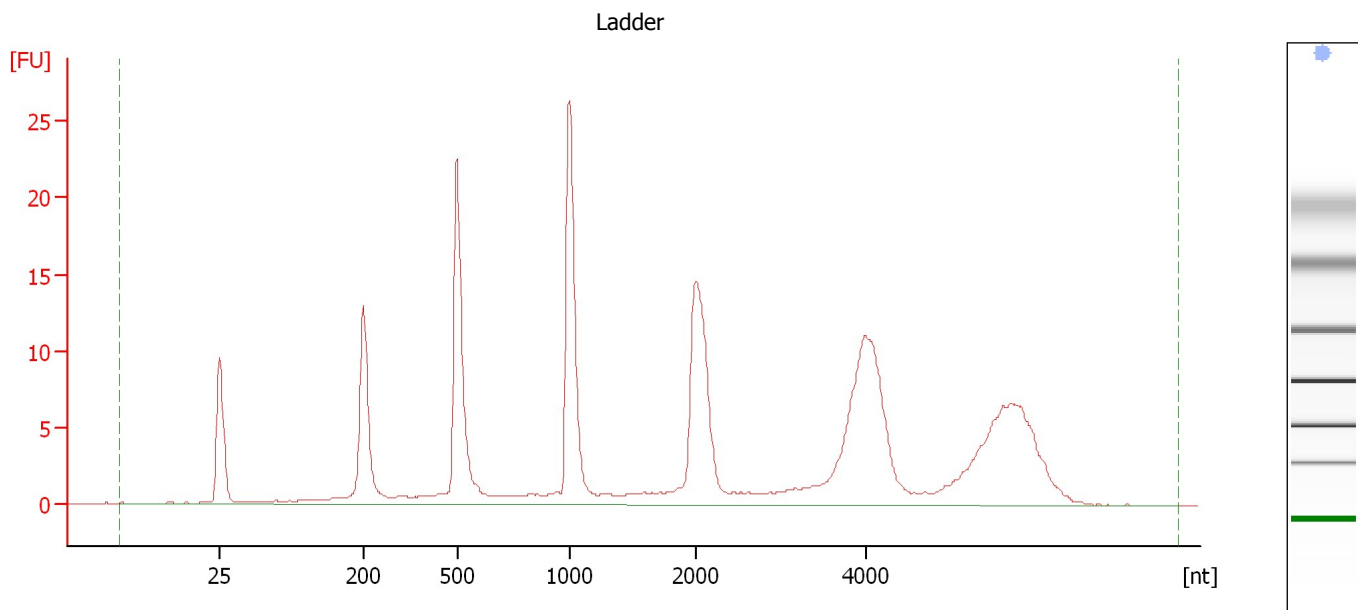
Ladder

Ladder Peak	Size
1	25
2	200
3	500
4	1000
5	2000
6	4000

Assay Class: Eukaryote Total RNA Nano
Data Path: C:\...ents and Settings\Bioanalyzer\2012-05-25\2012-05-25_002.xad

Created: 5/25/2012 4:42:15 PM
Modified: 5/25/2012 5:06:05 PM

Electropherogram Summary



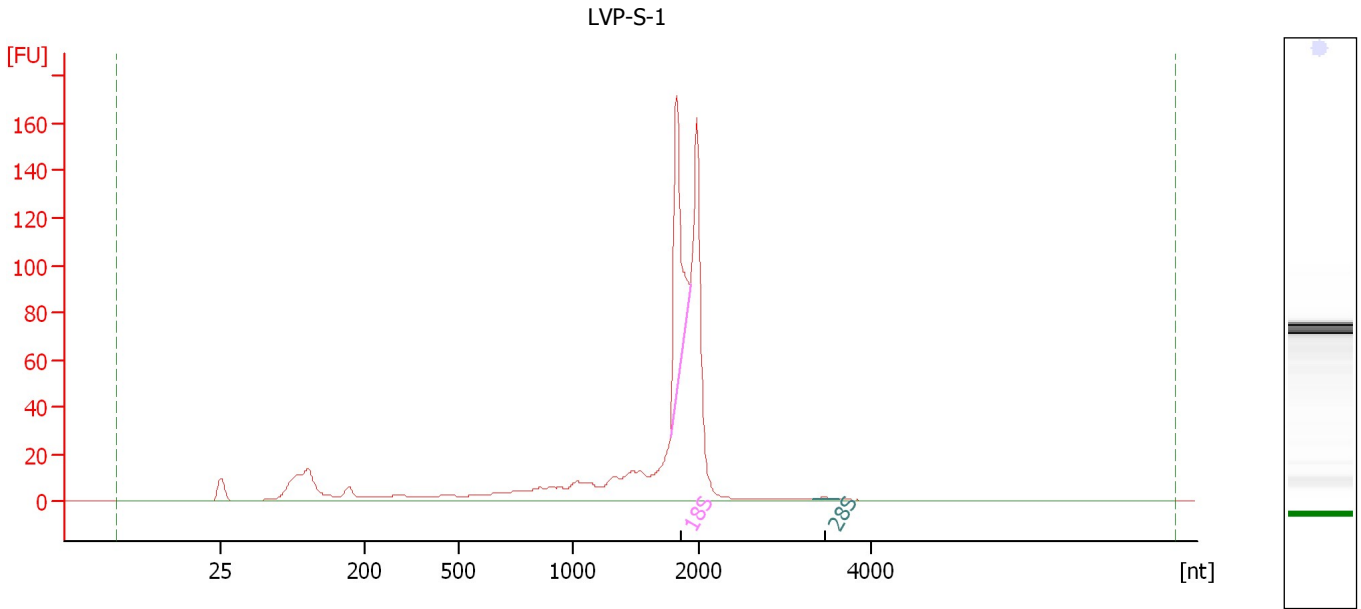
Overall Results for Ladder

RNA Area:	214.2	Result Flagging Color:	
RNA Concentration:	150 ng/ μ l	Result Flagging Label:	All Other Samples

Assay Class: Eukaryote Total RNA Nano
Data Path: C:\...ents and Settings\Bioanalyzer\2012-05-25\2012-05-25_002.xad

Created: 5/25/2012 4:42:15 PM
Modified: 5/25/2012 5:06:05 PM

Electropherogram Summary Continued ...



Overall Results for sample 1 : LVP-S-1

RNA Area: 672.4 RNA Integrity Number (RIN): 5.6 (B.02.08)
RNA Concentration: 471 ng/μl Result Flagging Color:
rRNA Ratio [28s / 18s]: 0.0 Result Flagging Label: RIN: 5.60

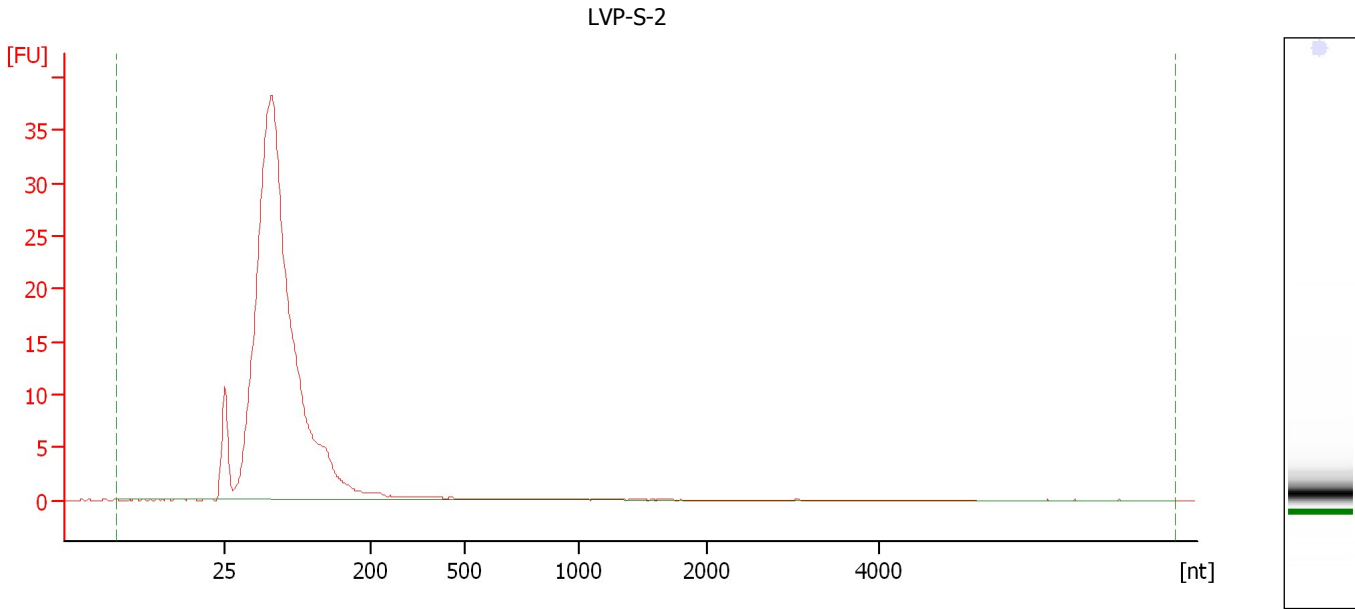
Fragment table for sample 1 : LVP-S-1

Name	Start Size [nt]	End Size [nt]	Area	% of total Area
18S	1,774	1,934	96.5	14.3
28S	3,340	3,640	0.9	0.1

Assay Class: Eukaryote Total RNA Nano
Data Path: C:\...ents and Settings\Bioanalyzer\2012-05-25\2012-05-25_002.xad

Created: 5/25/2012 4:42:15 PM
Modified: 5/25/2012 5:06:05 PM

Electropherogram Summary Continued ...



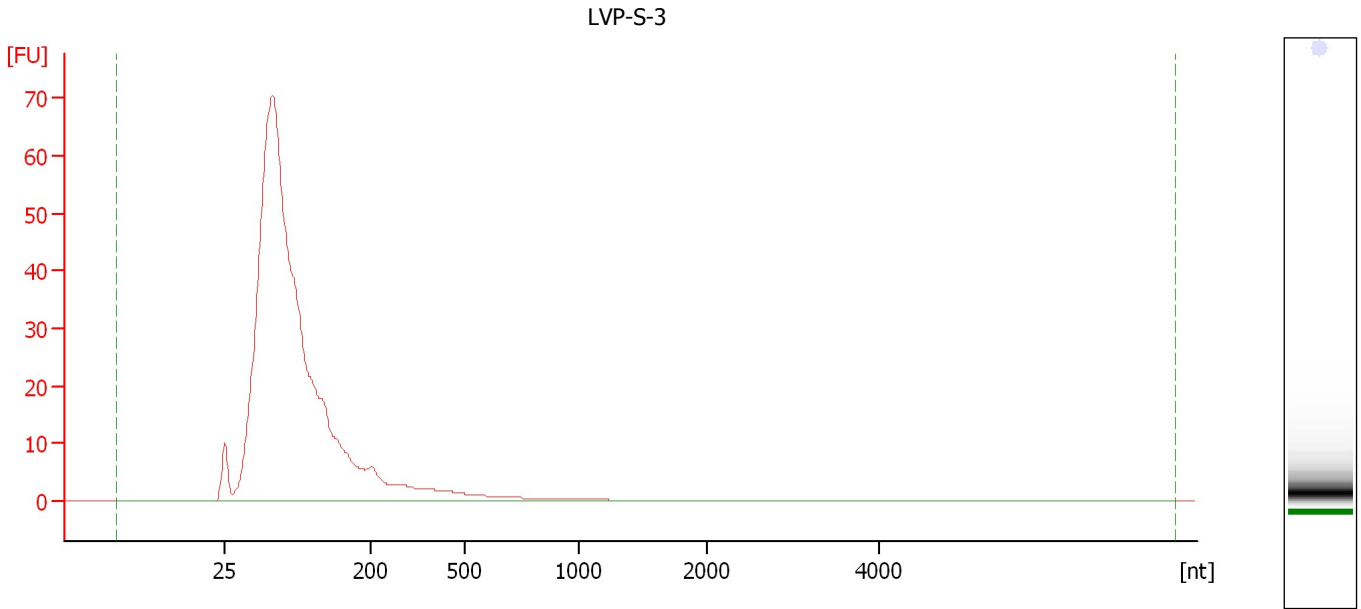
Overall Results for sample 2 : LVP-S-2

RNA Area:	274.3	RNA Integrity Number (RIN):	2.6 (B.02.08)
RNA Concentration:	192 ng/μl	Result Flagging Color:	
rRNA Ratio [28s / 18s]:	0.0	Result Flagging Label:	RIN: 2.60

Assay Class: Eukaryote Total RNA Nano
Data Path: C:\...ents and Settings\Bioanalyzer\2012-05-25\2012-05-25_002.xad

Created: 5/25/2012 4:42:15 PM
Modified: 5/25/2012 5:06:05 PM

Electropherogram Summary Continued ...



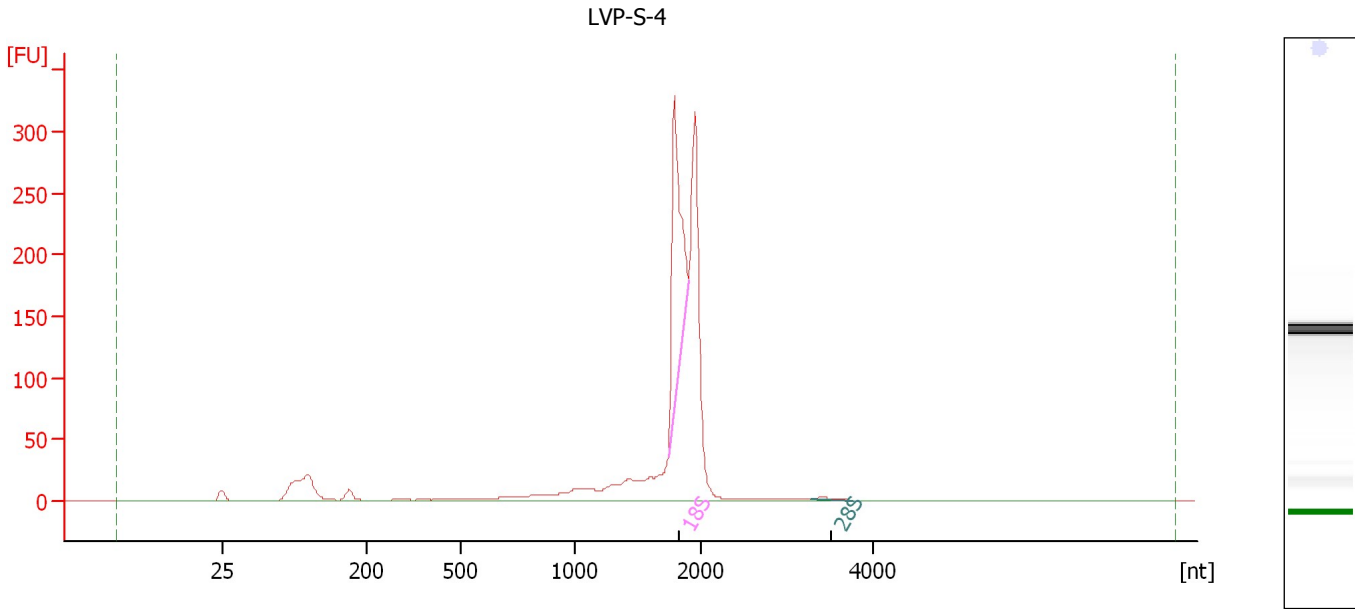
Overall Results for sample 3 : LVP-S-3

RNA Area:	640.4	RNA Integrity Number (RIN):	2.5 (B.02.08)
RNA Concentration:	449 ng/μl	Result Flagging Color:	
rRNA Ratio [28s / 18s]:	0.0	Result Flagging Label:	RIN: 2.50

Assay Class: Eukaryote Total RNA Nano
Data Path: C:\...ents and Settings\Bioanalyzer\2012-05-25\2012-05-25_002.xad

Created: 5/25/2012 4:42:15 PM
Modified: 5/25/2012 5:06:05 PM

Electropherogram Summary Continued ...



Overall Results for sample 4 : LVP-S-4

RNA Area: 1,121.7 RNA Integrity Number (RIN): 6.6 (B.02.08)
RNA Concentration: 786 ng/μl Result Flagging Color:
rRNA Ratio [28s / 18s]: 0.0 Result Flagging Label: RIN: 6.60

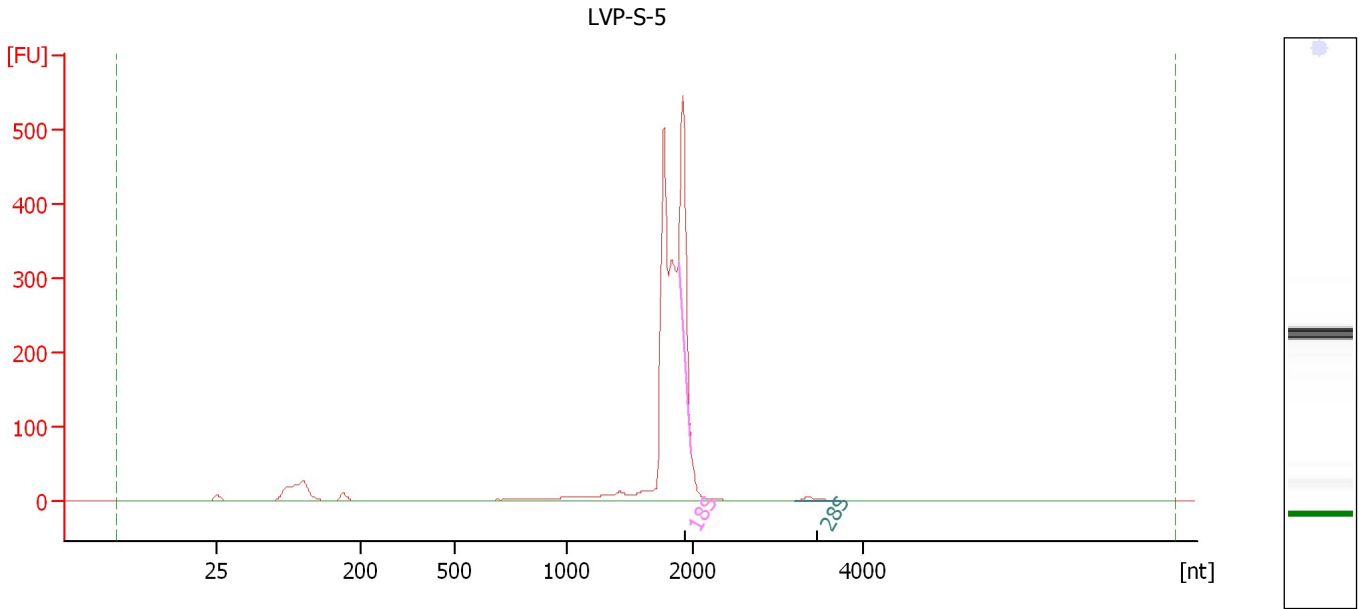
Fragment table for sample 4 : LVP-S-4

Name	Start Size [nt]	End Size [nt]	Area	% of total Area
18S	1,742	1,901	224.9	20.0
28S	3,276	3,775	3.3	0.3

Assay Class: Eukaryote Total RNA Nano
 Data Path: C:\...ents and Settings\Bioanalyzer\2012-05-25\2012-05-25_002.xad

Created: 5/25/2012 4:42:15 PM
 Modified: 5/25/2012 5:06:05 PM

Electropherogram Summary Continued ...



Overall Results for sample 5 : LVP-S-5

RNA Area:	1,477.6	RNA Integrity Number (RIN):	5.3 (B.02.08, Anomaly Threshold(s) manually adapted)
RNA Concentration:	1,035 ng/μl	Result Flagging Color:	
rRNA Ratio [28s / 18s]:	0.0	Result Flagging Label:	RIN: 5.30

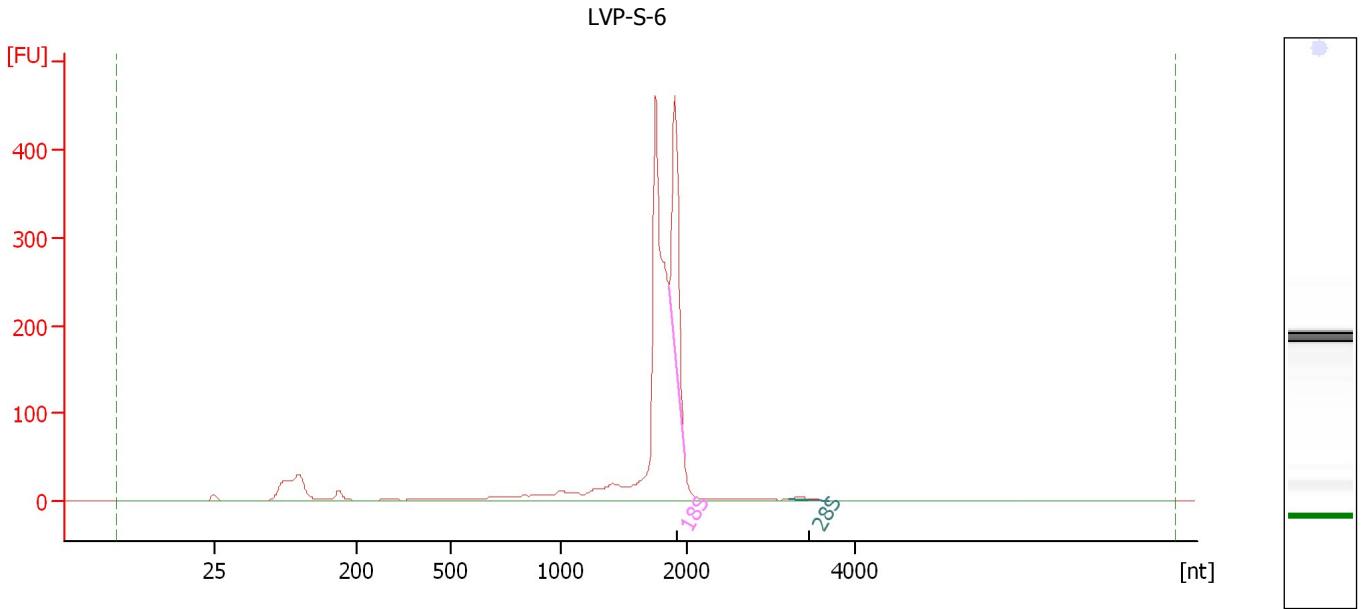
Fragment table for sample 5 : LVP-S-5

Name	Start Size [nt]	End Size [nt]	Area	% of total Area
18S	1,881	1,991	205.3	13.9
28S	3,207	3,735	6.4	0.4

Assay Class: Eukaryote Total RNA Nano
Data Path: C:\...ents and Settings\Bioanalyzer\2012-05-25\2012-05-25_002.xad

Created: 5/25/2012 4:42:15 PM
Modified: 5/25/2012 5:06:05 PM

Electropherogram Summary Continued ...



Overall Results for sample 6 : LVP-S-6

RNA Area:	1,462.5	RNA Integrity Number (RIN):	5.2 (B.02.08, Anomaly Threshold(s) manually adapted)
RNA Concentration:	1,024 ng/μl	Result Flagging Color:	
rRNA Ratio [28s / 18s]:	0.0	Result Flagging Label:	RIN: 5.20

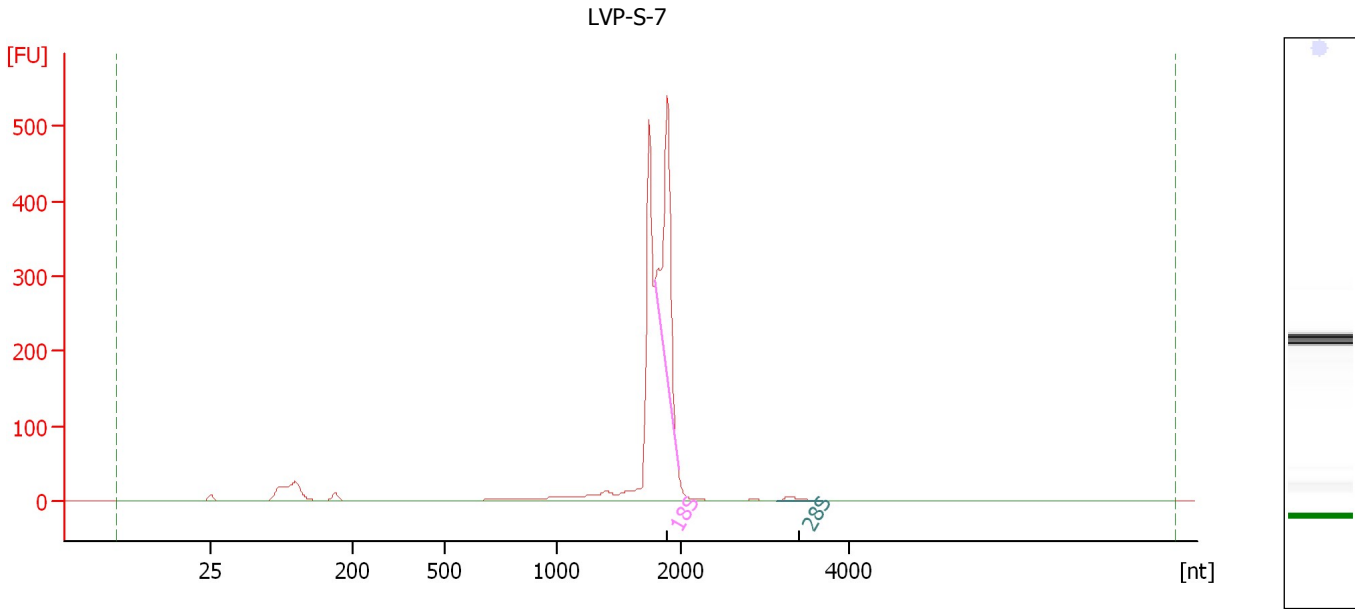
Fragment table for sample 6 : LVP-S-6

Name	Start Size [nt]	End Size [nt]	Area	% of total Area
18S	1,861	1,980	198.9	13.6
28S	3,199	3,692	5.5	0.4

Assay Class: Eukaryote Total RNA Nano
 Data Path: C:\...ents and Settings\Bioanalyzer\2012-05-25\2012-05-25_002.xad

Created: 5/25/2012 4:42:15 PM
 Modified: 5/25/2012 5:06:05 PM

Electropherogram Summary Continued ...



Overall Results for sample 7 : LVP-S-7

RNA Area:	1,439.8	RNA Integrity Number (RIN):	6.5 (B.02.08, Anomaly Threshold(s) manually adapted)
RNA Concentration:	1,008 ng/μl	Result Flagging Color:	
rRNA Ratio [28s / 18s]:	0.0	Result Flagging Label:	RIN: 6.50

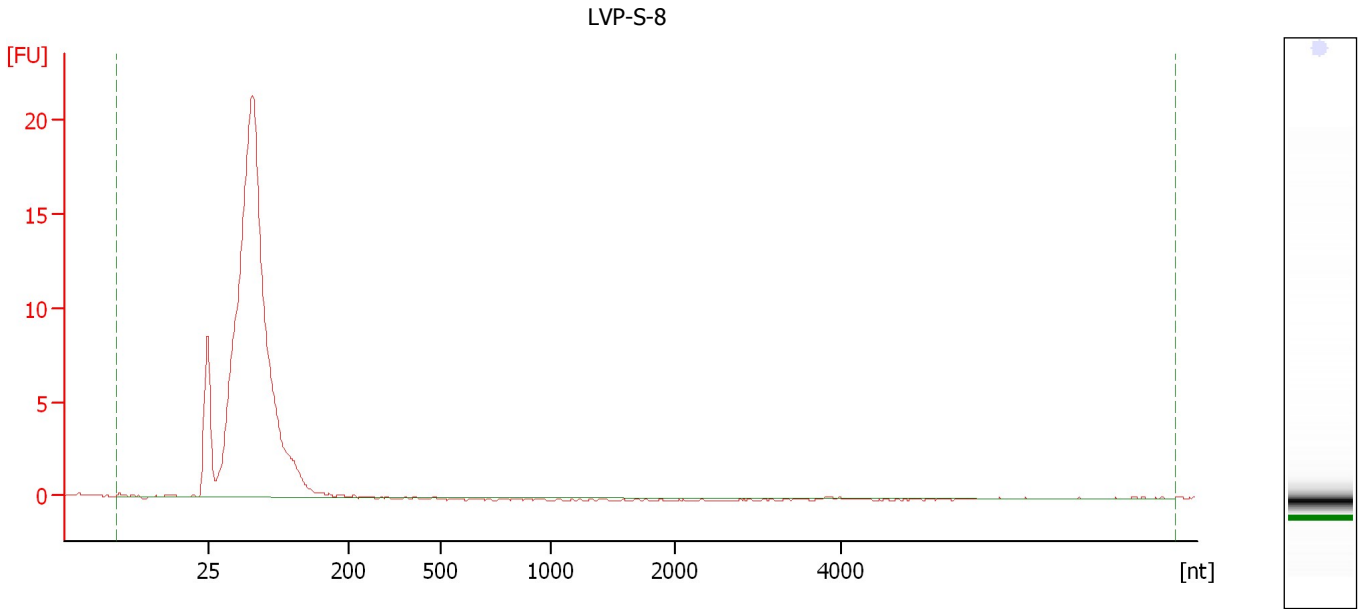
Fragment table for sample 7 : LVP-S-7

Name	Start Size [nt]	End Size [nt]	Area	% of total Area
18S	1,798	1,978	327.0	22.7
28S	3,140	3,700	7.2	0.5

Assay Class: Eukaryote Total RNA Nano
Data Path: C:\...ents and Settings\Bioanalyzer\2012-05-25\2012-05-25_002.xad

Created: 5/25/2012 4:42:15 PM
Modified: 5/25/2012 5:06:05 PM

Electropherogram Summary Continued ...



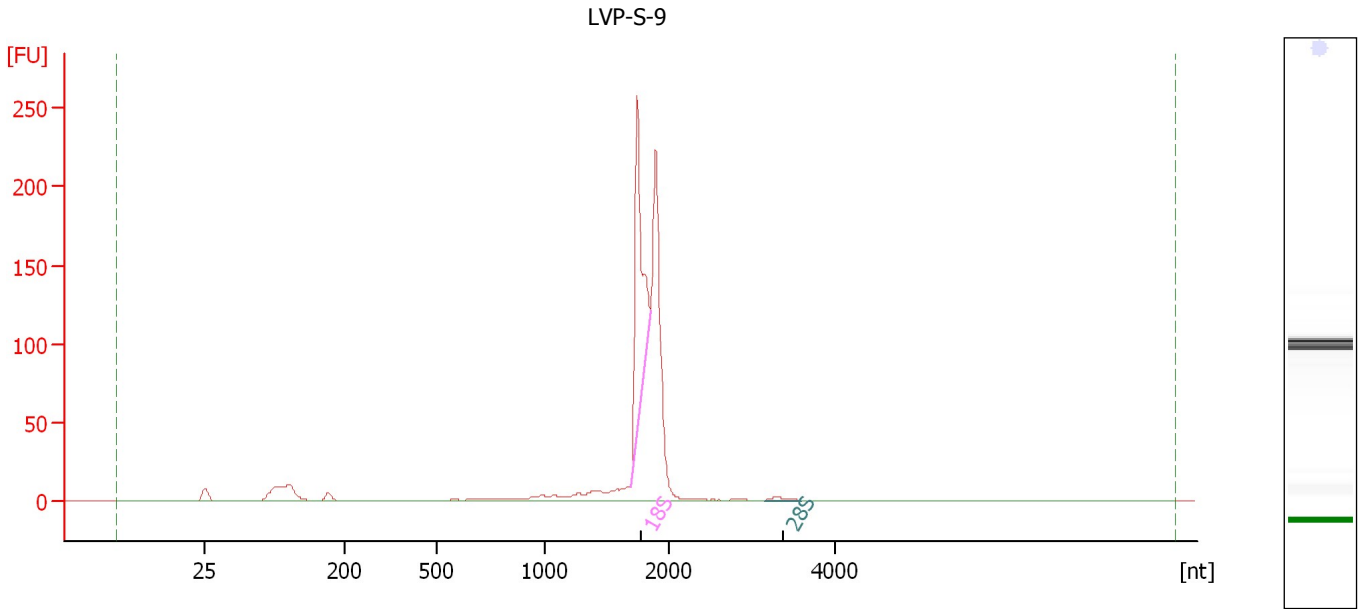
Overall Results for sample 8 : LVP-S-8

RNA Area:	124.3	RNA Integrity Number (RIN):	2.6 (B.02.08)
RNA Concentration:	87 ng/μl	Result Flagging Color:	
rRNA Ratio [28s / 18s]:	0.0	Result Flagging Label:	RIN: 2.60

Assay Class: Eukaryote Total RNA Nano
 Data Path: C:\...ents and Settings\Bioanalyzer\2012-05-25\2012-05-25_002.xad

Created: 5/25/2012 4:42:15 PM
 Modified: 5/25/2012 5:06:05 PM

Electropherogram Summary Continued ...



Overall Results for sample 9 : LVP-S-9

RNA Area:	672.6	RNA Integrity Number (RIN):	7.6 (B.02.08, Anomaly Threshold(s) manually adapted)
RNA Concentration:	471 ng/μl	Result Flagging Color:	
rRNA Ratio [28s / 18s]:	0.0	Result Flagging Label:	RIN: 7.60

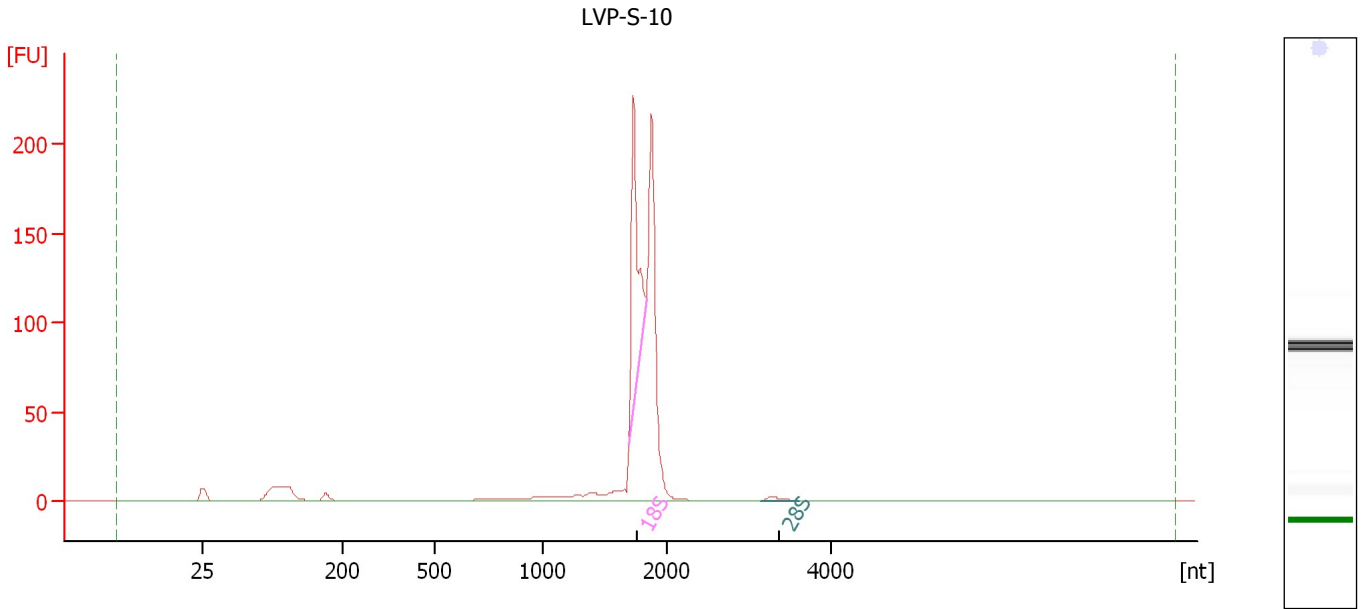
Fragment table for sample 9 : LVP-S-9

Name	Start Size [nt]	End Size [nt]	Area	% of total Area
18S	1,696	1,852	168.9	25.1
28S	3,161	3,612	2.7	0.4

Assay Class: Eukaryote Total RNA Nano
 Data Path: C:\...ents and Settings\Bioanalyzer\2012-05-25\2012-05-25_002.xad

Created: 5/25/2012 4:42:15 PM
 Modified: 5/25/2012 5:06:05 PM

Electropherogram Summary Continued ...



Overall Results for sample 10 : LVP-S-10

RNA Area:	579.9	RNA Integrity Number (RIN):	7.3 (B.02.08, Anomaly Threshold(s) manually adapted)
RNA Concentration:	406 ng/μl	Result Flagging Color:	
rRNA Ratio [28s / 18s]:	0.0	Result Flagging Label:	RIN: 7.30

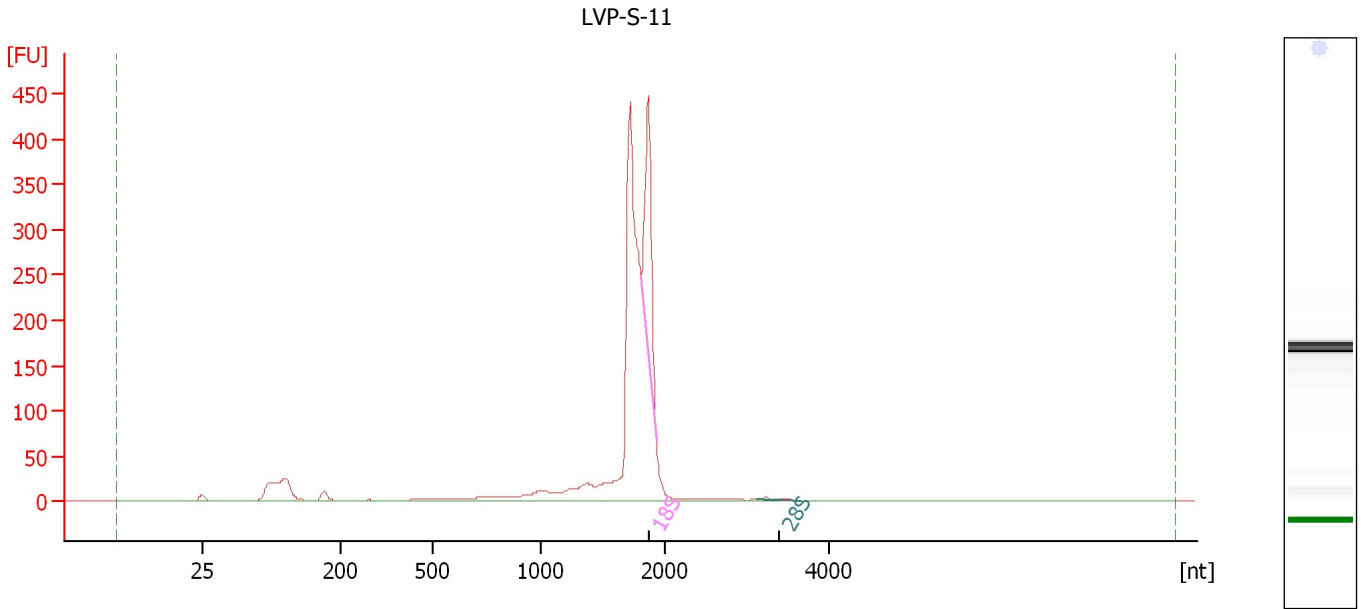
Fragment table for sample 10 : LVP-S-10

Name	Start Size [nt]	End Size [nt]	Area	% of total Area
18S	1,694	1,834	128.3	22.1
28S	3,136	3,602	2.9	0.5

Assay Class: Eukaryote Total RNA Nano
Data Path: C:\...ents and Settings\Bioanalyzer\2012-05-25\2012-05-25_002.xad

Created: 5/25/2012 4:42:15 PM
Modified: 5/25/2012 5:06:05 PM

Electropherogram Summary Continued ...



Overall Results for sample 11 : LVP-S-11

RNA Area:	1,418.9	RNA Integrity Number (RIN):	5.3 (B.02.08, Anomaly Threshold(s) manually adapted)
RNA Concentration:	994 ng/μl	Result Flagging Color:	
rRNA Ratio [28s / 18s]:	0.0	Result Flagging Label:	RIN: 5.30

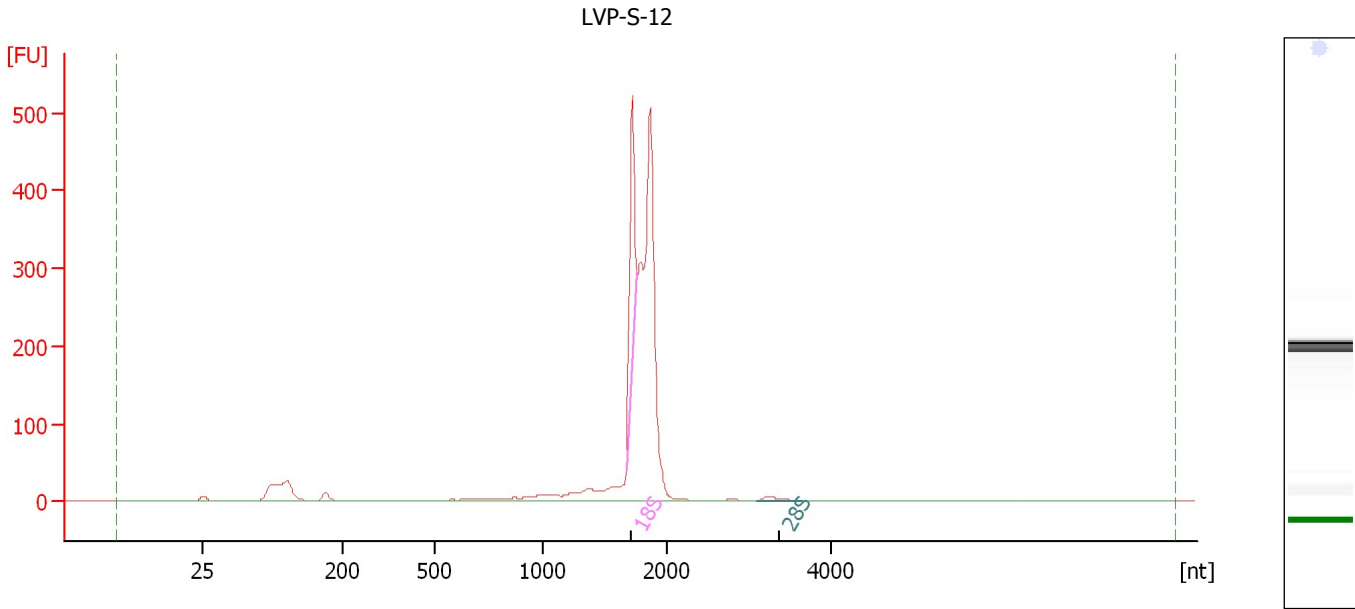
Fragment table for sample 11 : LVP-S-11

Name	Start Size [nt]	End Size [nt]	Area	% of total Area
18S	1,815	1,937	203.7	14.4
28S	3,112	3,669	4.3	0.3

Assay Class: Eukaryote Total RNA Nano
 Data Path: C:\...ents and Settings\Bioanalyzer\2012-05-25\2012-05-25_002.xad

Created: 5/25/2012 4:42:15 PM
 Modified: 5/25/2012 5:06:05 PM

Electropherogram Summary Continued ...



Overall Results for sample 12 : LVP-S-12

RNA Area:	1,497.5	RNA Integrity Number (RIN):	5.2 (B.02.08)
RNA Concentration:	1,049 ng/μl	Result Flagging Color:	
rRNA Ratio [28s / 18s]:	0.0	Result Flagging Label:	RIN: 5.20

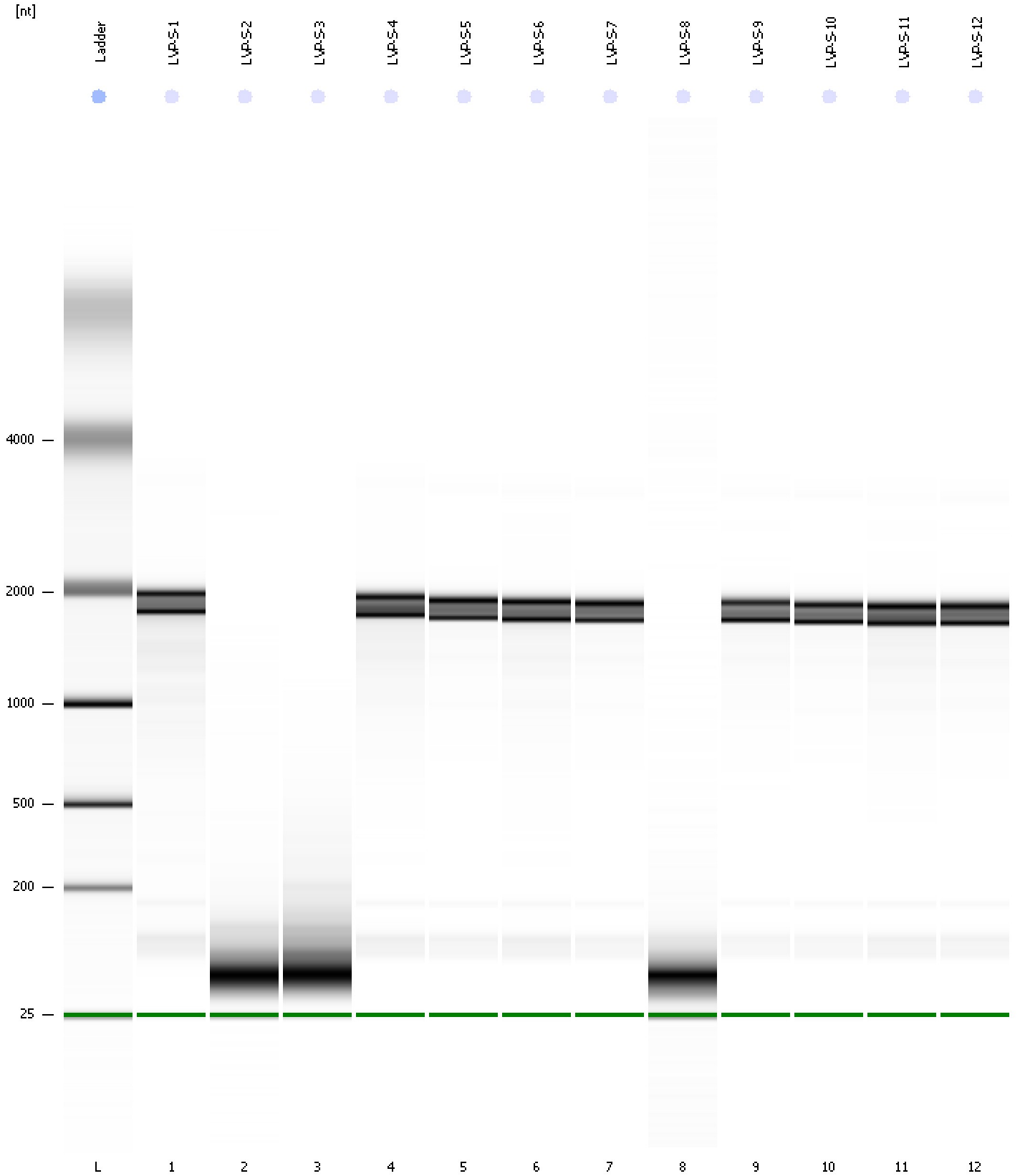
Fragment table for sample 12 : LVP-S-12

Name	Start Size [nt]	End Size [nt]	Area	% of total Area
18S	1,677	1,755	187.6	12.5
28S	3,098	3,653	7.6	0.5

Assay Class: Eukaryote Total RNA Nano
Data Path: C:\...ents and Settings\Bioanalyzer\2012-05-25\2012-05-25_002.xad

Created: 5/25/2012 4:42:15 PM
Modified: 5/25/2012 5:06:05 PM

Gel Image



Assay Class: Eukaryote Total RNA Nano
 Data Path: C:\...ents and Settings\Bioanalyzer\2012-05-25\2012-05-25_002.xad

Created: 5/25/2012 4:42:15 PM
 Modified: 5/25/2012 5:06:05 PM

Run Logbook

Description	Number	Source	Category	Sub Category	Time	Time Zone	User	Host
Run ended on port 1 (Number of wells acquired: 13)		Instrument	Run		5/25/2012 5:06:01 PM	(GMT --07:00) Pacific Standard Time	UC Davis	D8XSMGH1
Run started on port 1 (File: C:\Documents and Settings\Bioanalyzer\2012-05-25\2012-05-25_002.xad)		Instrument	Run		5/25/2012 4:42:16 PM	(GMT --07:00) Pacific Standard Time	UC Davis	D8XSMGH1
Product Number : G2938B		Instrument	Run		5/25/2012 4:42:16 PM	(GMT --07:00) Pacific Standard Time	UC Davis	D8XSMGH1
Name :		Instrument	Run		5/25/2012 4:42:16 PM	(GMT --07:00) Pacific Standard Time	UC Davis	D8XSMGH1
Vendor : Agilent Technologies		Instrument	Run		5/25/2012 4:42:16 PM	(GMT --07:00) Pacific Standard Time	UC Davis	D8XSMGH1
Serial# : DE13701086		Instrument	Run		5/25/2012 4:42:16 PM	(GMT --07:00) Pacific Standard Time	UC Davis	D8XSMGH1
Firmware : C.01.069		Instrument	Run		5/25/2012 4:42:16 PM	(GMT --07:00) Pacific Standard Time	UC Davis	D8XSMGH1
Cartridge : Electrode		Instrument	Run		5/25/2012 4:42:16 PM	(GMT --07:00) Pacific Standard Time	UC Davis	D8XSMGH1