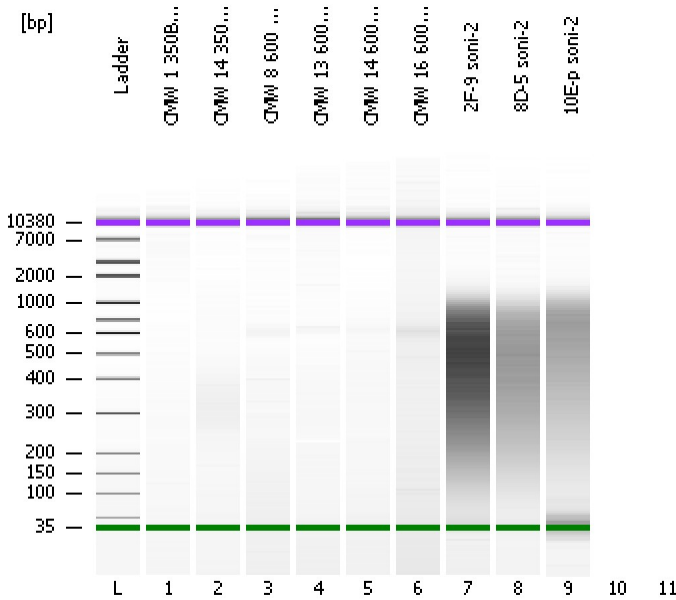


Assay Class: High Sensitivity DNA Assay  
Data Path: C:\...ents and Settings\Bioanalyzer\2012-05-29\2012-05-29\_001.xad

Created: 5/29/2012 9:39:50 AM  
Modified: 5/29/2012 10:38:56 AM

**Electrophoresis File Run Summary**



Instrument Information:

Instrument Name: DE13701086      Firmware: C.01.069  
Serial#: DE13701086      Type: G2938B

Assay Information:

Assay Origin Path: C:\Program Files\Agilent\2100 bioanalyzer\2100 expert\assays\dsDNA\High Sensitivity DNA.xsy  
Assay Class: High Sensitivity DNA Assay  
Version: 1.03  
Assay Comments: Copyright © 2003-2010 Agilent Technologies

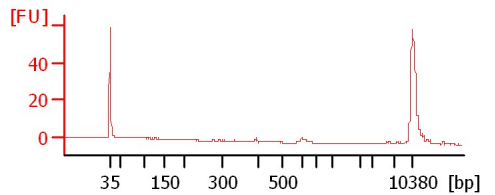
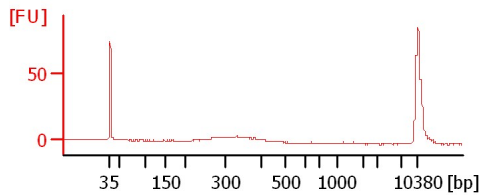
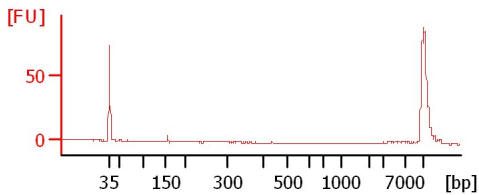
Chip Information:

Chip Lot #:   
Reagent Kit Lot #:   
Chip Comments:

**CMW 1 350BP Lib (5/29)**

**CMW 14 350BP Lib (5/29)**

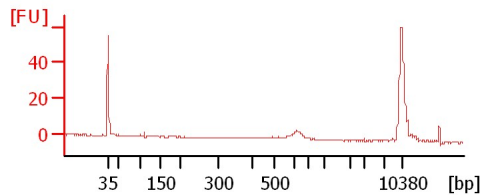
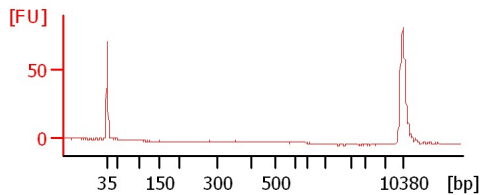
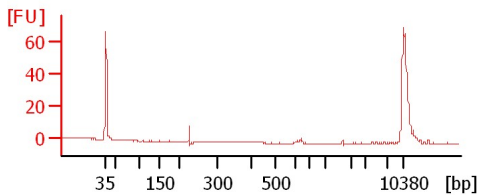
**CMW 8 600 BP Lib (5/29)**



**CMW 13 600 BP Lib (5/29)**

**CMW 14 600 BP Lib (5/29)**

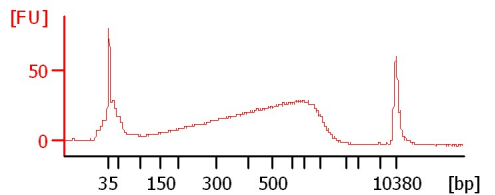
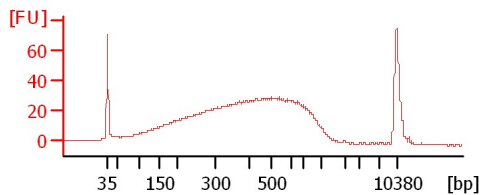
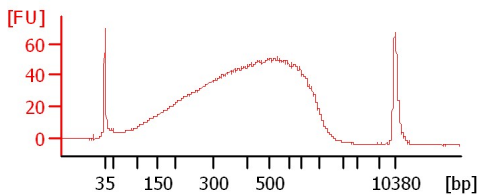
**CMW 16 600 BP Lib (5/29)**



**2F-9 soni-2**

**8D-5 soni-2**

**10E-p soni-2**



Assay Class: High Sensitivity DNA Assay  
 Data Path: C:\...ents and Settings\Bioanalyzer\2012-05-29\2012-05-29\_001.xad

Created: 5/29/2012 9:39:50 AM  
 Modified: 5/29/2012 10:38:56 AM

**Electrophoresis File Run Summary (Chip Summary)**

Sample Name	Sample Comment	Rest. Digest	Status	Observation	Result Label	Result Color
CMW 1 350BP Lib (5/29)		<input type="checkbox"/>	✓			
CMW 14 350BP Lib (5/29)		<input type="checkbox"/>	✓			
CMW 8 600 BP Lib (5/29)		<input type="checkbox"/>	✓			
CMW 13 600 BP Lib (5/29)		<input type="checkbox"/>	✓			
CMW 14 600 BP Lib (5/29)		<input type="checkbox"/>	✓			
CMW 16 600 BP Lib (5/29)		<input type="checkbox"/>	✓			
2F-9 soni-2		<input type="checkbox"/>	✓			
8D-5 soni-2		<input type="checkbox"/>	✓			
10E-p soni-2		<input type="checkbox"/>	✓			
		<input type="checkbox"/>				
		<input type="checkbox"/>				
Ladder		<input type="checkbox"/>	✓			

**Chip Lot #** **Reagent Kit Lot #**

**Chip Comments :**

Assay Class: High Sensitivity DNA Assay  
Data Path: C:\...ents and Settings\Bioanalyzer\2012-05-29\2012-05-29\_001.xad

Created: 5/29/2012 9:39:50 AM  
Modified: 5/29/2012 10:38:56 AM

**Electrophoresis Assay Details**

**General Analysis Settings**

Number of Available Sample and Ladder Wells (Max.) : 12  
Minimum Visible Range [s] : 32  
Maximum Visible Range [s] : 138  
Start Analysis Time Range [s] : 33  
End Analysis Time Range [s] : 137.5  
Ladder Concentration [pg/μl] : 1950  
Uses Standard Area for Ladder Fragments  
Lower Marker Concentration [pg/μl] : 125  
Upper Marker Concentration [pg/μl] : 75  
Used Upper Marker for Quantitation  
Standard Curve Fit is Point to Point  
Show Data Aligned to Lower and Upper Marker

**Integrator Settings**

Integration Start Time [s] : 33.05  
Integration End Time [s] : 137  
Slope Threshold : 0.8  
Height Threshold [FU] : 5  
Area Threshold : 0.1  
Width Threshold [s] : 0.6  
Baseline Plateau [s] : 0.5

**Filter Settings**

Filter Width [s] : 0.5  
Polynomial Order : 4

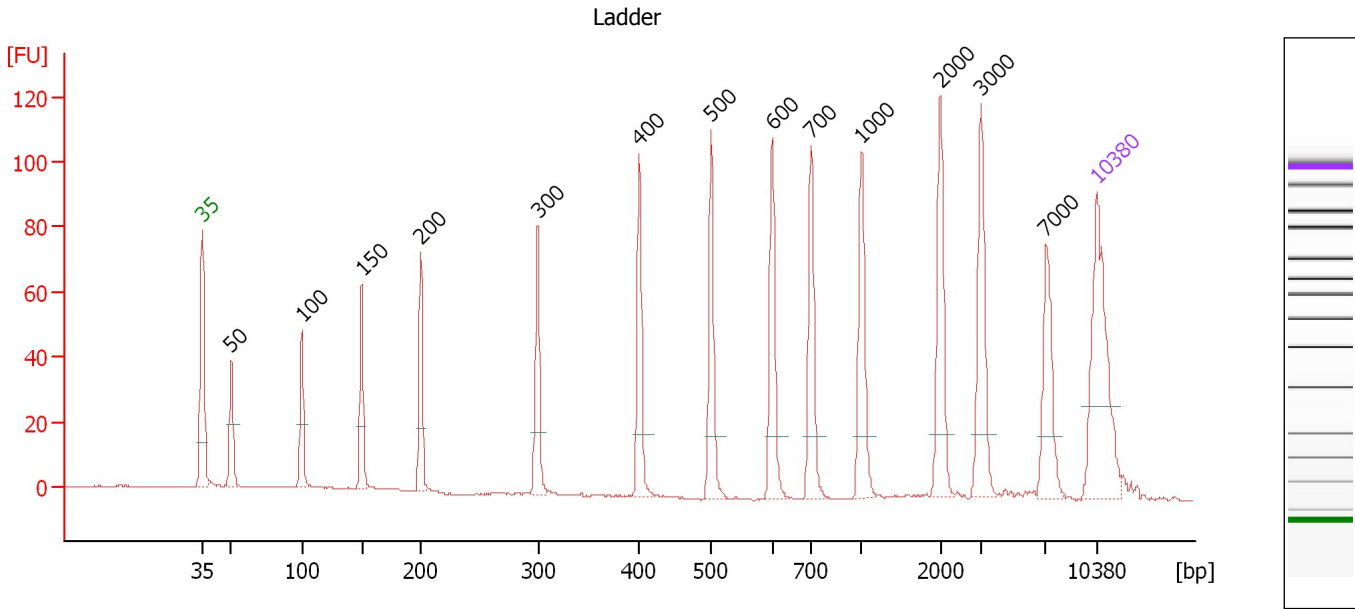
**Ladder**

Ladder Peak	Size	Area
1	35	160
2	50	210
3	100	208
4	150	221
5	200	242
6	300	270
7	400	305
8	500	306
9	600	336
10	700	321
11	1000	366
12	2000	413
13	3000	411
14	7000	400
15	10380	214

Assay Class: High Sensitivity DNA Assay  
 Data Path: C:\...ents and Settings\Bioanalyzer\2012-05-29\2012-05-29\_001.xad

Created: 5/29/2012 9:39:50 AM  
 Modified: 5/29/2012 10:38:56 AM

**Electropherogram Summary**



**Overall Results for Ladder**

Noise: 0.2

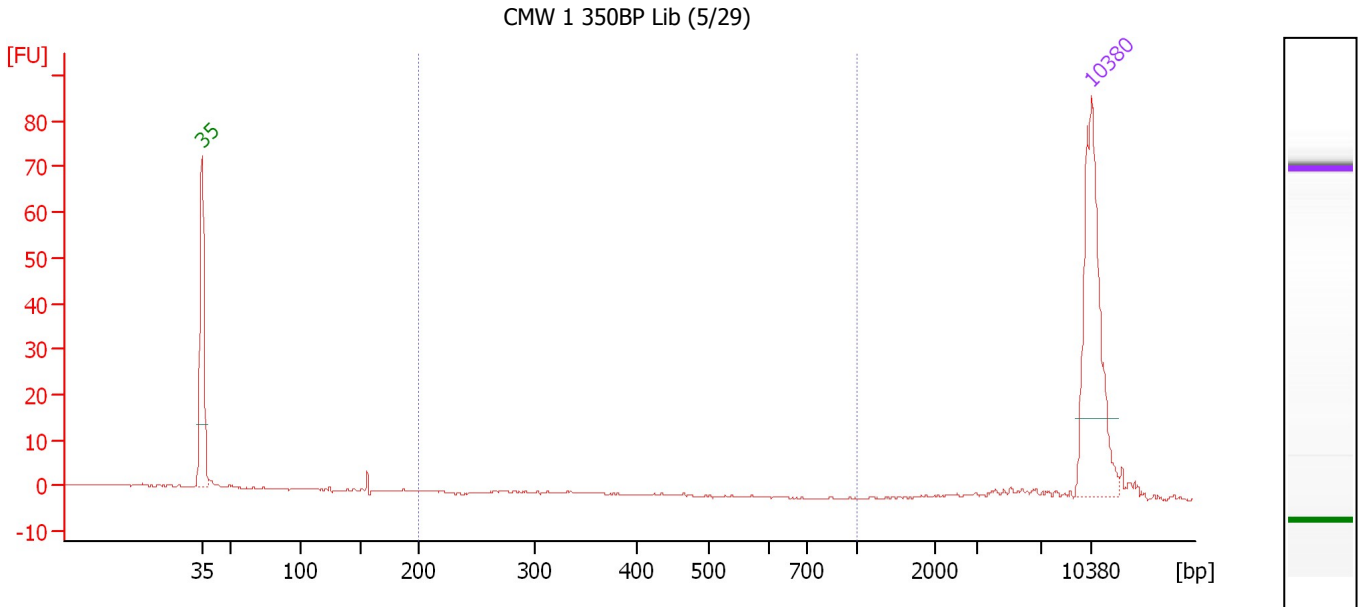
**Peak table for Ladder**

Peak	Size [bp]	Conc. [pg/μl]	Molarity [pmol/l]	Observations
1	35	125.00	5,411.3	Lower Marker
2	50	150.00	4,545.5	Ladder Peak
3	100	150.00	2,272.7	Ladder Peak
4	150	150.00	1,515.2	Ladder Peak
5	200	150.00	1,136.4	Ladder Peak
6	300	150.00	757.6	Ladder Peak
7	400	150.00	568.2	Ladder Peak
8	500	150.00	454.5	Ladder Peak
9	600	150.00	378.8	Ladder Peak
10	700	150.00	324.7	Ladder Peak
11	1,000	150.00	227.3	Ladder Peak
12	2,000	150.00	113.6	Ladder Peak
13	3,000	150.00	75.8	Ladder Peak
14	7,000	150.00	32.5	Ladder Peak
15	10,380	75.00	10.9	Upper Marker

Assay Class: High Sensitivity DNA Assay  
 Data Path: C:\...ents and Settings\Bioanalyzer\2012-05-29\2012-05-29\_001.xad

Created: 5/29/2012 9:39:50 AM  
 Modified: 5/29/2012 10:38:56 AM

**Electropherogram Summary Continued ...**



**Overall Results for sample 1 : CMW 1 350BP Lib (5/29)**

Number of peaks found: 0                      Corr. Area 1: 0.1  
 Noise: 0.1

**Peak table for sample 1 : CMW 1 350BP Lib (5/29)**

Peak	Size [bp]	Conc. [pg/μl]	Molarity [pmol/l]	Observations
1	35	125.00	5,411.3	Lower Marker
2	10,380	75.00	10.9	Upper Marker

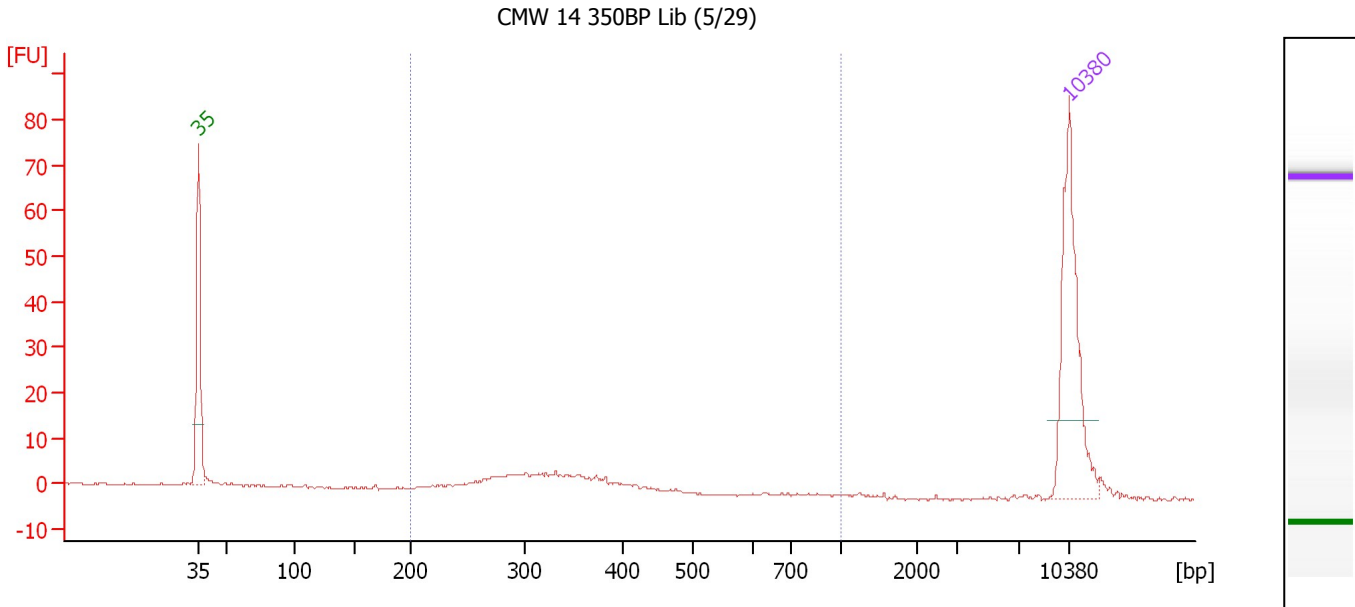
**Region table for sample 1 : CMW 1 350BP Lib (5/29)**

From [bp]	To [bp]	Average Size [bp]	Molarity [pmol/l]	Conc. [pg/μl]	Corr. Area	% of Total	Size distribution in CV [%]	Color
200	1,000	354	0.2	0.05	0.1	0	15.3	Blue

Assay Class: High Sensitivity DNA Assay  
 Data Path: C:\...ents and Settings\Bioanalyzer\2012-05-29\2012-05-29\_001.xad

Created: 5/29/2012 9:39:50 AM  
 Modified: 5/29/2012 10:38:56 AM

**Electropherogram Summary Continued ...**



**Overall Results for sample 2 : CMW 14 350BP Lib (5/29)**

Number of peaks found: 0                      Corr. Area 1: 61.1  
 Noise: 0.2

**Peak table for sample 2 : CMW 14 350BP Lib (5/29)**

Peak	Size [bp]	Conc. [pg/μl]	Molarity [pmol/l]	Observations
1	35	125.00	5,411.3	Lower Marker
2	10,380	75.00	10.9	Upper Marker

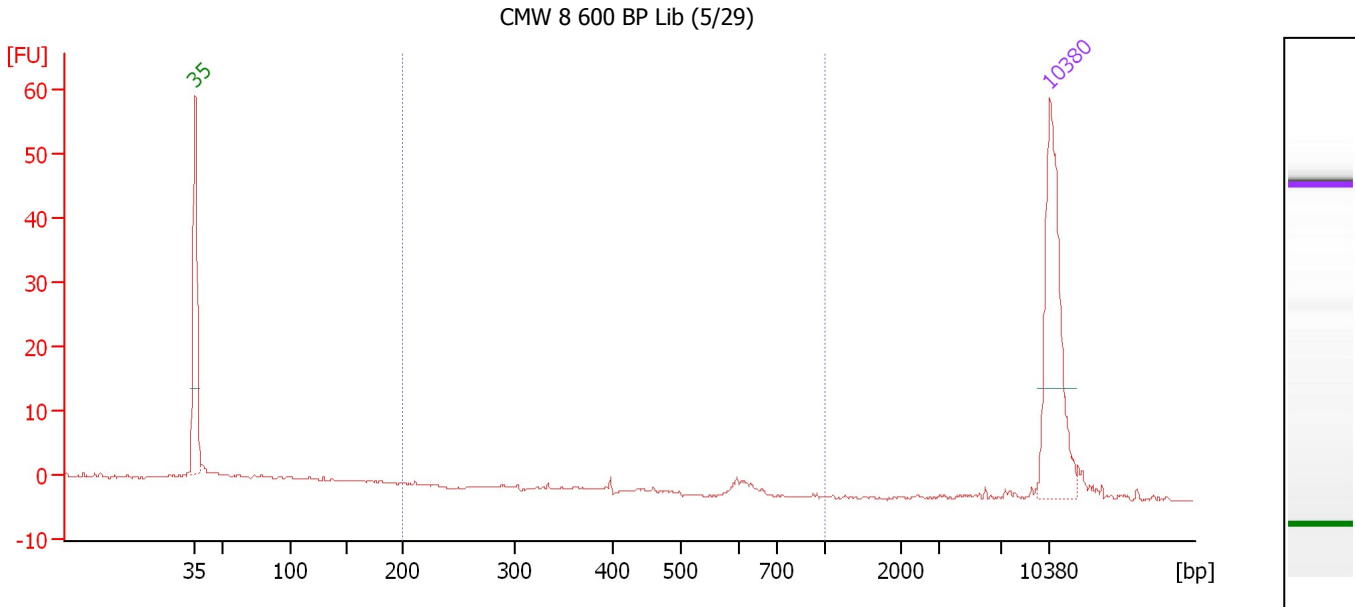
**Region table for sample 2 : CMW 14 350BP Lib (5/29)**

From [bp]	To [bp]	Average Size [bp]	Molarity [pmol/l]	Conc. [pg/μl]	Corr. Area	% of Total	Size distribution in CV [%]	Color
200	1,000	325	310.7	64.49	61.1	84	16.3	Blue

Assay Class: High Sensitivity DNA Assay  
 Data Path: C:\...ents and Settings\Bioanalyzer\2012-05-29\2012-05-29\_001.xad

Created: 5/29/2012 9:39:50 AM  
 Modified: 5/29/2012 10:38:56 AM

**Electropherogram Summary Continued ...**



**Overall Results for sample 3 : CMW 8 600 BP Lib (5/29)**

Number of peaks found: 0                      Corr. Area 1: 3.7  
 Noise: 0.2

**Peak table for sample 3 : CMW 8 600 BP Lib (5/29)**

Peak	Size [bp]	Conc. [pg/μl]	Molarity [pmol/l]	Observations
1	35	125.00	5,411.3	Lower Marker
2	10,380	75.00	10.9	Upper Marker

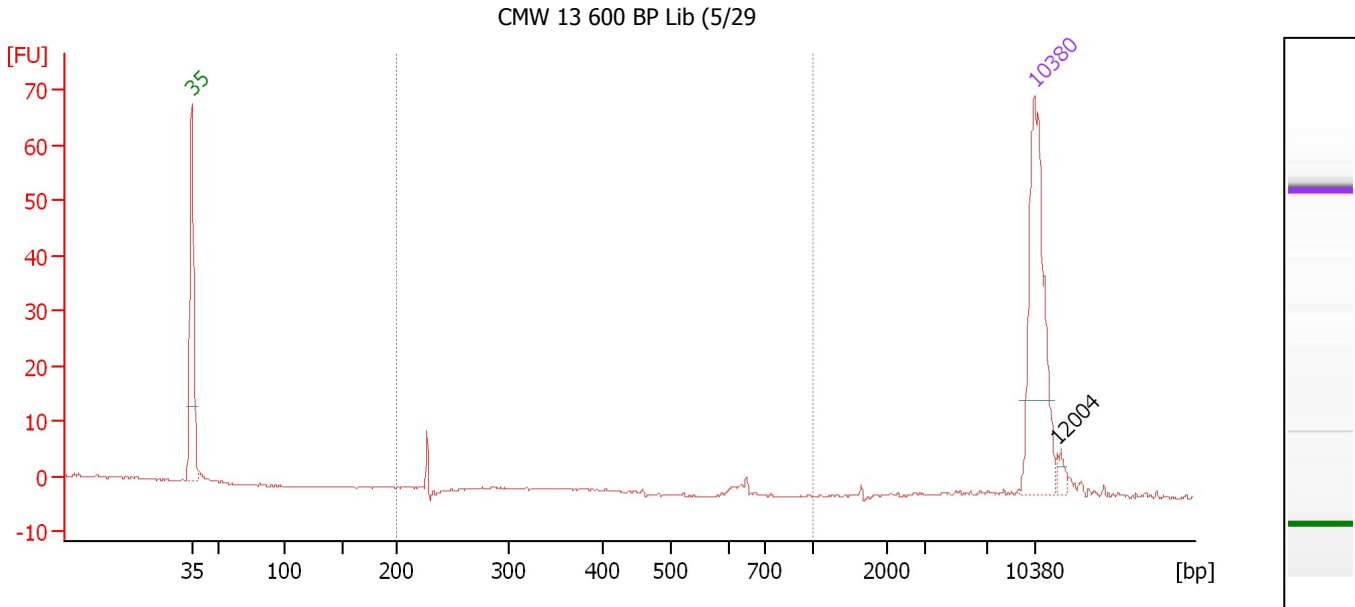
**Region table for sample 3 : CMW 8 600 BP Lib (5/29)**

From [bp]	To [bp]	Average Size [bp]	Molarity [pmol/l]	Conc. [pg/μl]	Corr. Area	% of Total	Size distribution in CV [%]	Color
200	1,000	569	13.5	4.60	3.7	10	17.9	Blue

Assay Class: High Sensitivity DNA Assay  
 Data Path: C:\...ents and Settings\Bioanalyzer\2012-05-29\2012-05-29\_001.xad

Created: 5/29/2012 9:39:50 AM  
 Modified: 5/29/2012 10:38:56 AM

**Electropherogram Summary Continued ...**



**Overall Results for sample 4 : CMW 13 600 BP Lib (5/29)**

Number of peaks found: 1                      Corr. Area 1: 3.4  
 Noise: 0.1

**Peak table for sample 4 : CMW 13 600 BP Lib (5/29)**

Peak	Size [bp]	Conc. [pg/μl]	Molarity [pmol/l]	Observations
1	35	125.00	5,411.3	Lower Marker
2	10,380	75.00	10.9	Upper Marker
3	12,004	0.00	0.0	

**Region table for sample 4 : CMW 13 600 BP Lib (5/29)**

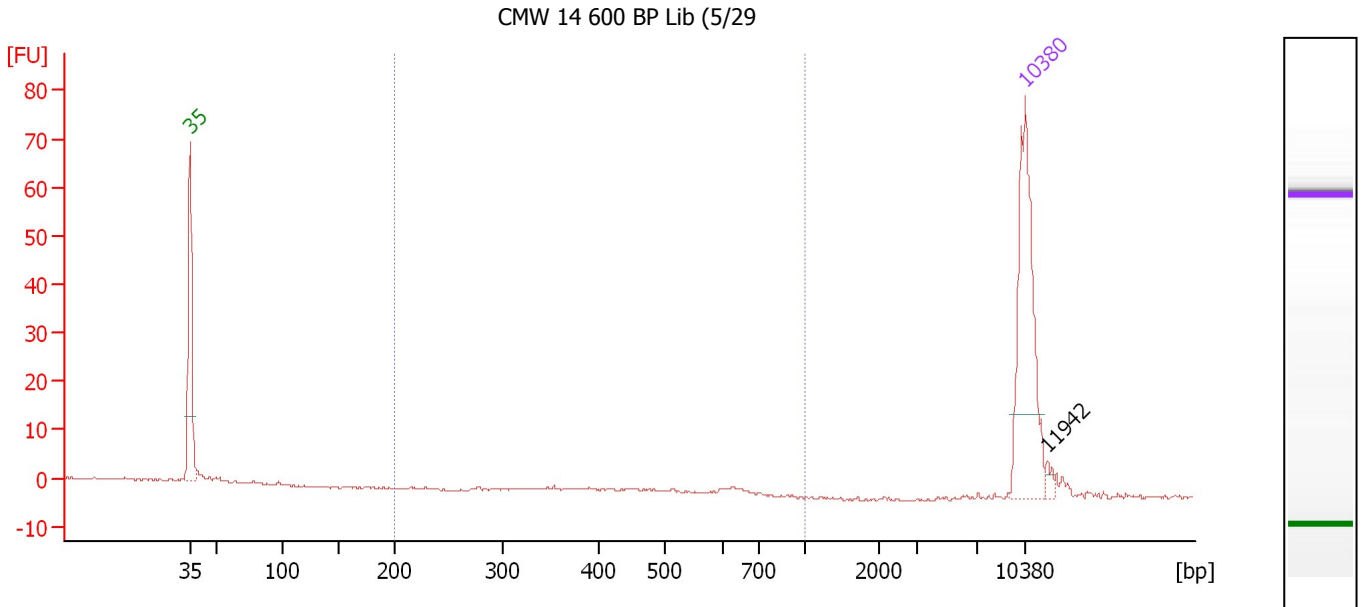
From [bp]	To [bp]	Average Size [bp]	Molarity [pmol/l]	Conc. [pg/μl]	Corr. Area	% of Total	Size distribution in CV [%]	Color
200	1,000	360	24.9	4.29	3.4	22	53.7	Blue



Assay Class: High Sensitivity DNA Assay  
 Data Path: C:\...ents and Settings\Bioanalyzer\2012-05-29\2012-05-29\_001.xad

Created: 5/29/2012 9:39:50 AM  
 Modified: 5/29/2012 10:38:56 AM

**Electropherogram Summary Continued ...**



**Overall Results for sample 5 : CMW 14 600 BP Lib (5/29)**

Number of peaks found: 1                      Corr. Area 1: 0.9  
 Noise: 0.1

**Peak table for sample 5 : CMW 14 600 BP Lib (5/29)**

Peak	Size [bp]	Conc. [pg/μl]	Molarity [pmol/l]	Observations
1	35	125.00	5,411.3	Lower Marker
2	10,380	75.00	10.9	Upper Marker
3	11,942	0.00	0.0	

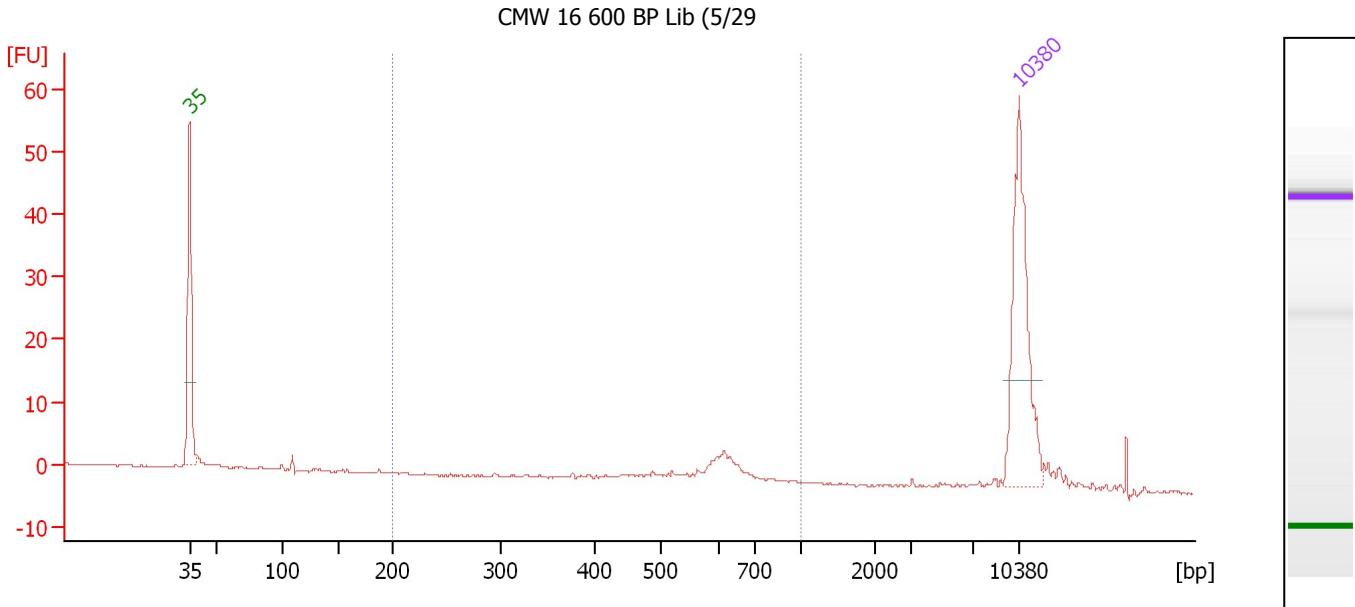
**Region table for sample 5 : CMW 14 600 BP Lib (5/29)**

From [bp]	To [bp]	Average Size [bp]	Molarity [pmol/l]	Conc. [pg/μl]	Corr. Area	% of Total	Size distribution in CV [%]	Color
200	1,000	612	2.1	0.85	0.9	5	10.2	Blue

Assay Class: High Sensitivity DNA Assay  
 Data Path: C:\...ents and Settings\Bioanalyzer\2012-05-29\2012-05-29\_001.xad

Created: 5/29/2012 9:39:50 AM  
 Modified: 5/29/2012 10:38:56 AM

**Electropherogram Summary Continued ...**



**Overall Results for sample 6 : CMW 16 600 BP Lib (5/29)**

Number of peaks found: 0                      Corr. Area 1: 24.4  
 Noise: 0.1

**Peak table for sample 6 : CMW 16 600 BP Lib (5/29)**

Peak	Size [bp]	Conc. [pg/μl]	Molarity [pmol/l]	Observations
1	35	125.00	5,411.3	Lower Marker
2	10,380	75.00	10.9	Upper Marker

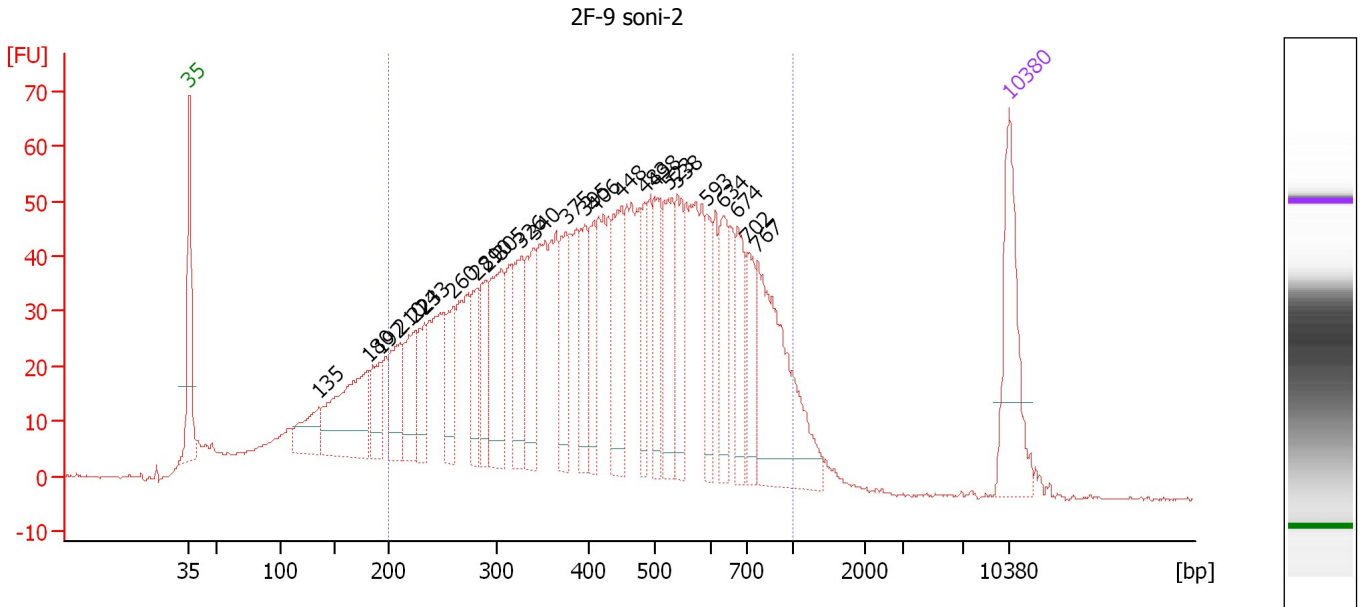
**Region table for sample 6 : CMW 16 600 BP Lib (5/29)**

From [bp]	To [bp]	Average Size [bp]	Molarity [pmol/l]	Conc. [pg/μl]	Corr. Area	% of Total	Size distribution in CV [%]	Color
200	1,000	592	83.9	31.27	24.4	51	17.7	Blue

Assay Class: High Sensitivity DNA Assay  
 Data Path: C:\...ents and Settings\Bioanalyzer\2012-05-29\2012-05-29\_001.xad

Created: 5/29/2012 9:39:50 AM  
 Modified: 5/29/2012 10:38:56 AM

**Electropherogram Summary Continued ...**



**Overall Results for sample 7 : 2F-9 soni-2**

Number of peaks found: 25                      Corr. Area 1: 1,925.7  
 Noise: 0.3

**Peak table for sample 7 : 2F-9 soni-2**

Peak	Size [bp]	Conc. [pg/μl]	Molarity [pmol/l]	Observations
1	35	125.00	5,411.3	Lower Marker
2	135	50.95	572.1	
3	180	141.16	1,187.4	
4	192	46.34	365.6	
5	210	64.86	467.2	
6	224	61.75	417.3	
7	233	43.23	280.9	
8	260	54.70	318.9	
9	281	52.89	284.9	
10	290	51.11	266.9	
11	305	100.15	497.1	
12	326	76.15	353.4	
13	340	76.54	340.8	
14	375	57.12	231.0	
15	395	63.16	242.4	
16	406	46.49	173.3	
17	448	81.64	275.9	
18	483	44.61	139.9	
19	498	52.12	158.7	
20	523	73.29	212.3	
21	538	58.70	165.2	
22	593	37.09	94.8	
23	634	50.50	120.7	
24	674	50.13	112.7	
25	702	41.61	89.8	
26	767	164.05	323.9	


Assay Class: High Sensitivity DNA Assay  
Data Path: C:\...ents and Settings\Bioanalyzer\2012-05-29\2012-05-29\_001.xad

Created: 5/29/2012 9:39:50 AM  
Modified: 5/29/2012 10:38:56 AM

**Electropherogram Summary Continued ...****... Peak table for sample 7 : 2F-9 soni-2**

Peak	Size [bp]	Conc. [pg/ $\mu$ l]	Molarity [pmol/l]	Observations
27	10,380	75.00	10.9	Upper Marker

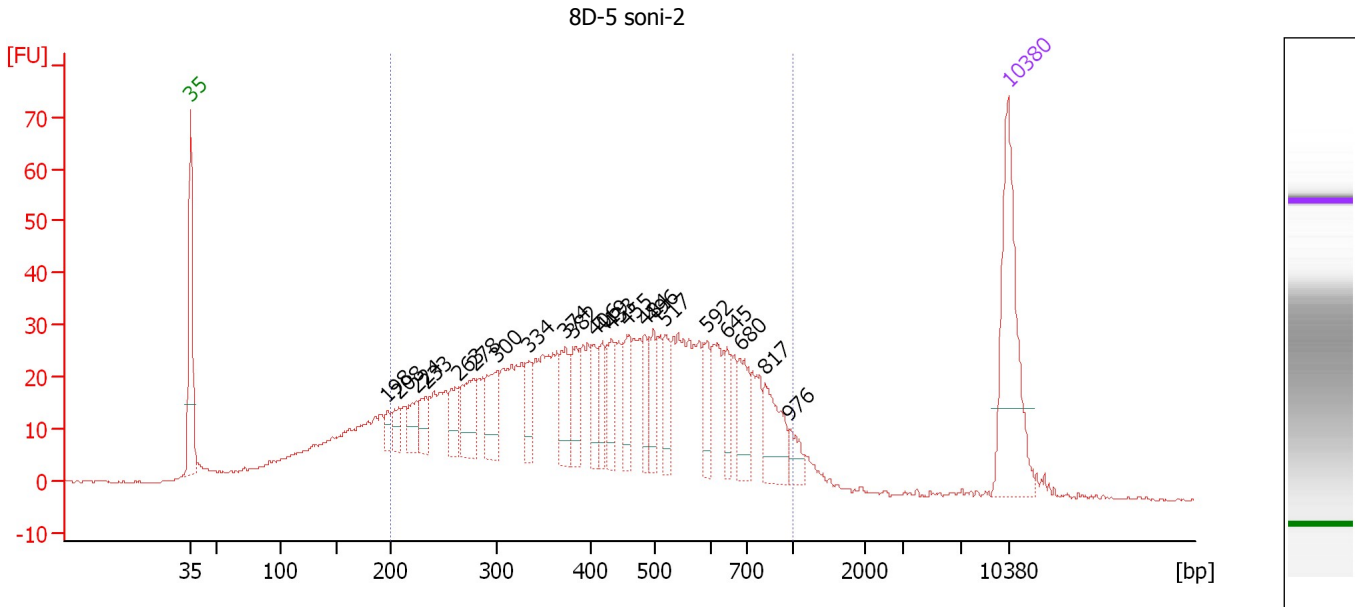
**Region table for sample 7 : 2F-9 soni-2**

From [bp]	To [bp]	Average Size [bp]	Molarity [pmol/l]	Conc. [pg/ $\mu$ l]	Corr. Area	% of Total	Size distribution in CV [%]	Color
200	1,000	460	9,724.1	2,399.47	1,925.7	82	38.0	

Assay Class: High Sensitivity DNA Assay  
 Data Path: C:\...ents and Settings\Bioanalyzer\2012-05-29\2012-05-29\_001.xad

Created: 5/29/2012 9:39:50 AM  
 Modified: 5/29/2012 10:38:56 AM

**Electropherogram Summary Continued ...**



**Overall Results for sample 8 : 8D-5 soni-2**

Number of peaks found: 22                      Corr. Area 1: 1,116.9  
 Noise: 0.1

**Peak table for sample 8 : 8D-5 soni-2**

Peak	Size [bp]	Conc. [pg/μl]	Molarity [pmol/l]	Observations
1	35	125.00	5,411.3	Lower Marker
2	198	9.81	75.3	
3	208	13.72	100.0	
4	224	20.13	135.9	
5	233	15.92	103.4	
6	263	23.70	136.4	
7	278	37.46	204.0	
8	300	36.48	184.3	
9	334	18.41	83.5	
10	374	29.18	118.3	
11	382	27.86	110.6	
12	406	19.10	71.3	
13	419	19.08	69.0	
14	433	25.54	89.4	
15	455	24.54	81.6	
16	484	21.37	66.9	
17	496	21.50	65.7	
18	517	20.78	60.9	
19	592	20.81	53.3	
20	645	17.22	40.5	
21	680	28.10	62.6	
22	817	33.43	62.0	
23	976	10.40	16.1	
24	10,380	75.00	10.9	Upper Marker

Assay Class: High Sensitivity DNA Assay  
Data Path: C:\...ents and Settings\Bioanalyzer\2012-05-29\2012-05-29\_001.xad

Created: 5/29/2012 9:39:50 AM  
Modified: 5/29/2012 10:38:56 AM

**Electropherogram Summary Continued ...**

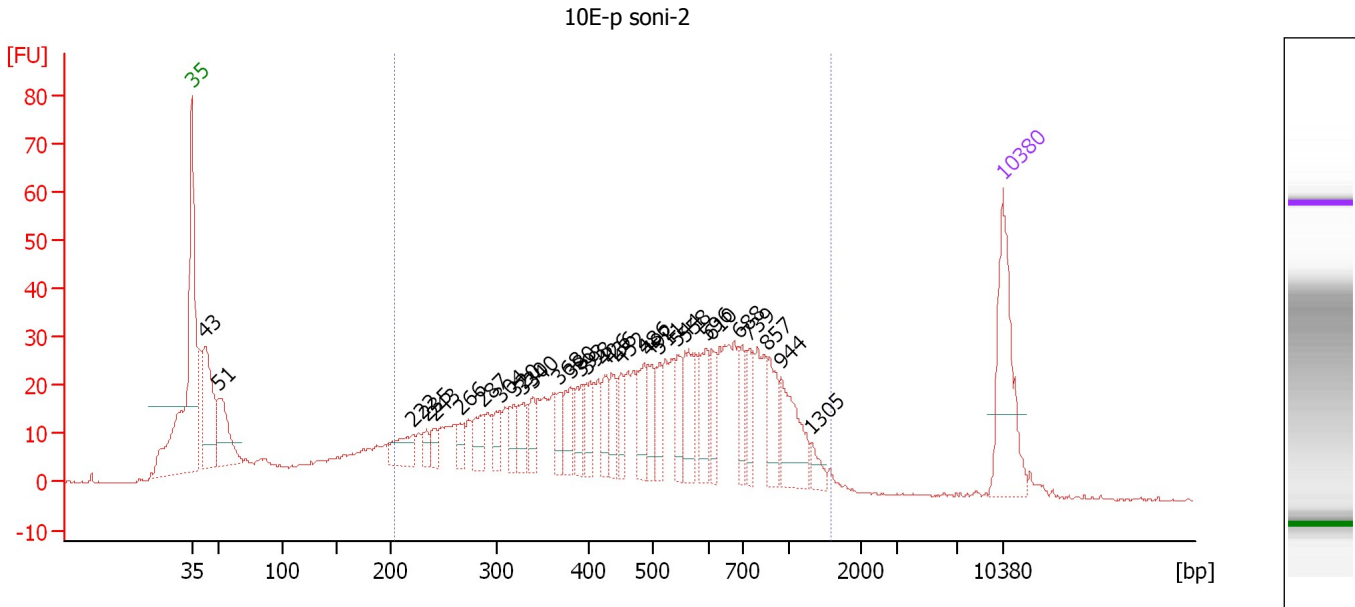
... Region table for sample 8 : 8D-5 soni-2

From [bp]	To [bp]	Average Size [bp]	Molarity [pmol/l]	Conc. [pg/μl]	Corr. Area	% of Total	Size distribution in CV [%]	Color
200	1,000	456	4,846.5	1,186.35	1,116.9	81	38.1	■

Assay Class: High Sensitivity DNA Assay  
 Data Path: C:\...ents and Settings\Bioanalyzer\2012-05-29\2012-05-29\_001.xad

Created: 5/29/2012 9:39:50 AM  
 Modified: 5/29/2012 10:38:56 AM

**Electropherogram Summary Continued ...**



**Overall Results for sample 9 : 10E-p soni-2**

Number of peaks found: 30                      Corr. Area 1: 979.4  
 Noise: 0.2

**Peak table for sample 9 : 10E-p soni-2**

Peak	Size [bp]	Conc. [pg/μl]	Molarity [pmol/l]	Observations
1	35	125.00	5,411.3	Lower Marker
2	43	123.83	4,398.3	
3	51	74.37	2,216.1	
4	222	34.09	232.6	
5	235	11.61	74.8	
6	243	13.13	82.0	
7	266	13.69	77.9	
8	287	28.27	149.1	
9	304	21.20	105.5	
10	320	22.82	108.1	
11	330	23.17	106.4	
12	340	21.16	94.4	
13	368	20.84	85.8	
14	380	28.64	114.1	
15	393	24.47	94.3	
16	398	25.29	96.2	
17	426	23.30	82.8	
18	436	25.16	87.4	
19	452	21.87	73.4	
20	486	28.45	88.7	
21	492	25.27	77.7	
22	511	23.11	68.5	
23	544	27.55	76.7	
24	558	38.81	105.4	
25	596	32.00	81.3	
26	610	23.29	57.9	

Assay Class: High Sensitivity DNA Assay  
 Data Path: C:\...ents and Settings\Bioanalyzer\2012-05-29\2012-05-29\_001.xad


Created: 5/29/2012 9:39:50 AM  
 Modified: 5/29/2012 10:38:56 AM

### Electropherogram Summary Continued ...

#### ... Peak table for sample 9 : 10E-p soni-2

Peak	Size [bp]	Conc. [pg/μl]	Molarity [pmol/l]	Observations
27	688	24.37	53.7	
28	739	25.25	51.8	
29	857	32.67	57.7	
30	944	52.27	83.9	
31	1,305	10.32	12.0	
32	10,380	75.00	10.9	Upper Marker

#### Region table for sample 9 : 10E-p soni-2

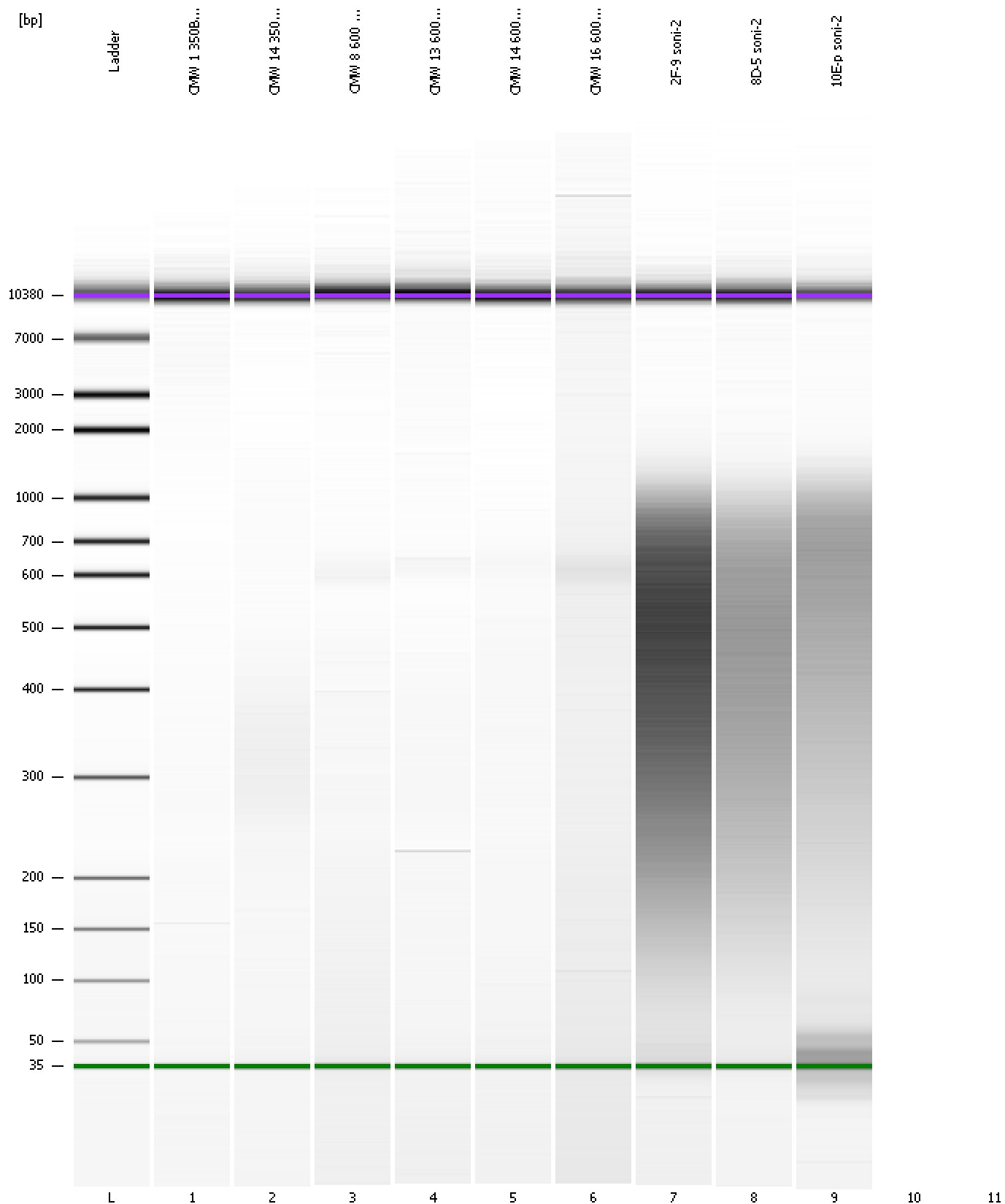
From [bp]	To [bp]	Average Size [bp]	Molarity [pmol/l]	Conc. [pg/μl]	Corr. Area	% of Total	Size distribution in CV [%]	Color
204	1,565	537	4,849.0	1,316.57	979.4	76	45.5	



Assay Class: High Sensitivity DNA Assay  
Data Path: C:\...ents and Settings\Bioanalyzer\2012-05-29\2012-05-29\_001.xad

Created: 5/29/2012 9:39:50 AM  
Modified: 5/29/2012 10:38:56 AM

**Gel Image**



Assay Class: High Sensitivity DNA Assay  
Data Path: C:\...ents and Settings\Bioanalyzer\2012-05-29\2012-05-29\_001.xad

Created: 5/29/2012 9:39:50 AM  
Modified: 5/29/2012 10:38:56 AM

**Invalid Samples**

Sample 10 has not been run, no results available.

Sample 11 has not been run, no results available.

Assay Class: High Sensitivity DNA Assay  
 Data Path: C:\...ents and Settings\Bioanalyzer\2012-05-29\2012-05-29\_001.xad

Created: 5/29/2012 9:39:50 AM  
 Modified: 5/29/2012 10:38:56 AM

**Run Logbook**

Description	Number	Source	Category	Sub Category	Time	Time Zone	User	Host
Run ended on port 1 (Number of wells acquired: 10)		Instrument	Run		5/29/2012 10:15:26 AM	(GMT --07:00) Pacific Standard Time	UC Davis	D8XSMGH1
Run started on port 1 (File: C:\Documents and Settings\Bioanalyzer\2012-05-29\2012-05-29_001.xad)		Instrument	Run		5/29/2012 9:39:55 AM	(GMT --07:00) Pacific Standard Time	UC Davis	D8XSMGH1
Product Number : G2938B		Instrument	Run		5/29/2012 9:39:55 AM	(GMT --07:00) Pacific Standard Time	UC Davis	D8XSMGH1
Name :		Instrument	Run		5/29/2012 9:39:55 AM	(GMT --07:00) Pacific Standard Time	UC Davis	D8XSMGH1
Vendor : Agilent Technologies		Instrument	Run		5/29/2012 9:39:55 AM	(GMT --07:00) Pacific Standard Time	UC Davis	D8XSMGH1
Serial# : DE13701086		Instrument	Run		5/29/2012 9:39:55 AM	(GMT --07:00) Pacific Standard Time	UC Davis	D8XSMGH1
Firmware : C.01.069		Instrument	Run		5/29/2012 9:39:55 AM	(GMT --07:00) Pacific Standard Time	UC Davis	D8XSMGH1
Cartridge : Electrode		Instrument	Run		5/29/2012 9:39:55 AM	(GMT --07:00) Pacific Standard Time	UC Davis	D8XSMGH1