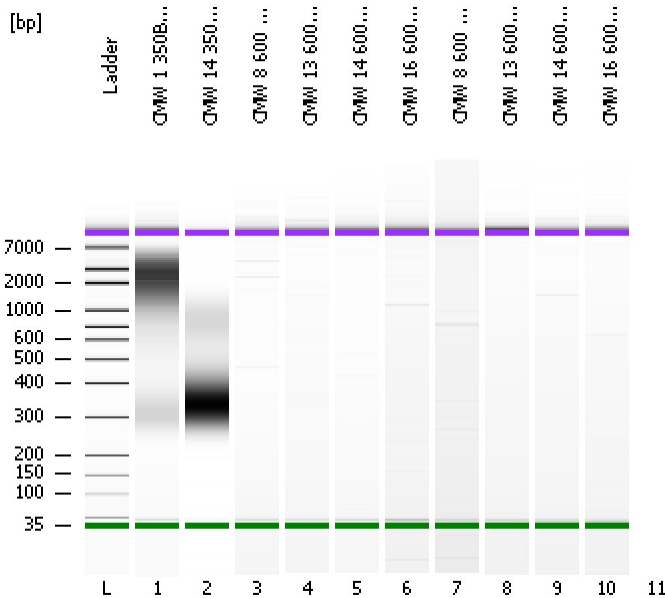


Assay Class: High Sensitivity DNA Assay
Data Path: C:\...ents and Settings\Bioanalyzer\2012-05-29\2012-05-29_002.xad

Created: 5/29/2012 12:29:39 PM
Modified: 5/29/2012 1:08:05 PM

Electrophoresis File Run Summary



Instrument Information:

Instrument Name: DE13701086 Firmware: C.01.069
Serial#: DE13701086 Type: G2938B

Assay Information:

Assay Origin Path: C:\Program Files\Agilent\2100 bioanalyzer\2100 expert\assays\dsDNA\High Sensitivity DNA.xsy
Assay Class: High Sensitivity DNA Assay
Version: 1.03
Assay Comments: Copyright © 2003-2010 Agilent Technologies

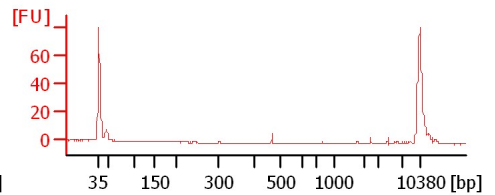
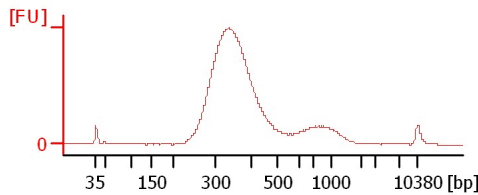
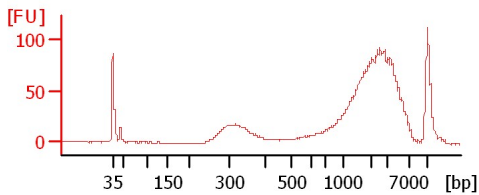
Chip Information:

Chip Lot #:
Reagent Kit Lot #:
Chip Comments:

CMW 1 350BP Lib (5/29)

CMW 14 350BP Lib (5/29)

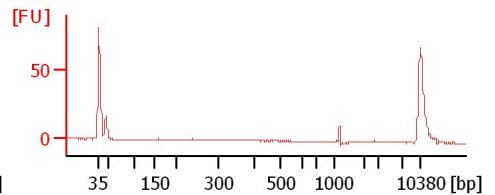
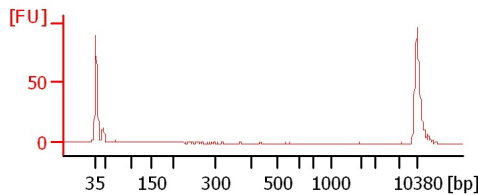
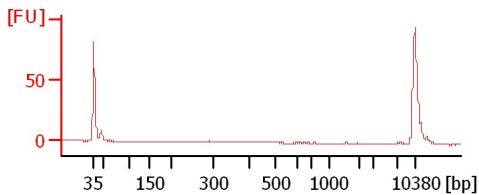
CMW 8 600 BP Lib (5/29)



CMW 13 600 BP Lib (5/29)

CMW 14 600 BP Lib (5/29)

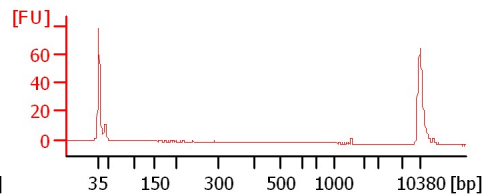
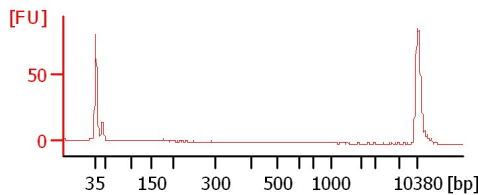
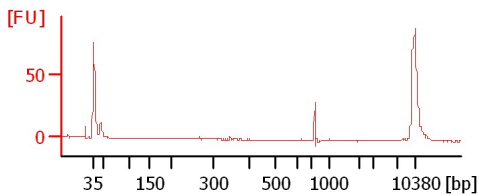
CMW 16 600 BP Lib (5/29)



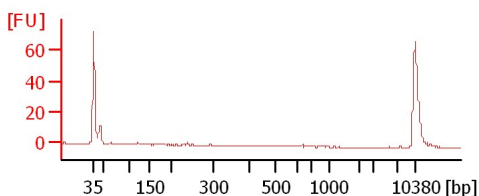
CMW 8 600 BP Lib (5/29)

CMW 13 600 BP Lib (5/29)

CMW 14 600 BP Lib (5/29)



CMW 16 600 BP Lib (5/29)



Assay Class: High Sensitivity DNA Assay
Data Path: C:\...ents and Settings\Bioanalyzer\2012-05-29\2012-05-29_002.xad

Created: 5/29/2012 12:29:39 PM
Modified: 5/29/2012 1:08:05 PM

Electrophoresis File Run Summary (Chip Summary)

Sample Name	Sample Comment	Rest. Digest	Status	Observation	Result Label	Result Color
CMW 1 350BP Lib (5/29)		<input type="checkbox"/>	✓			
CMW 14 350BP Lib (5/29)		<input type="checkbox"/>	✓			
CMW 8 600 BP Lib (5/29)		<input type="checkbox"/>	✓			
CMW 13 600 BP Lib (5/29)		<input type="checkbox"/>	✓			
CMW 14 600 BP Lib (5/29)		<input type="checkbox"/>	✓			
CMW 16 600 BP Lib (5/29)		<input type="checkbox"/>	✓			
CMW 8 600 BP Lib (5/29)		<input type="checkbox"/>	✓			
CMW 13 600 BP Lib (5/29)		<input type="checkbox"/>	✓			
CMW 14 600 BP Lib (5/29)		<input type="checkbox"/>	✓			
CMW 16 600 BP Lib (5/29)		<input type="checkbox"/>	✓			
Ladder		<input type="checkbox"/>	✓			

Chip Lot #

Reagent Kit Lot #

Chip Comments :

Assay Class: High Sensitivity DNA Assay
Data Path: C:\...ents and Settings\Bioanalyzer\2012-05-29\2012-05-29_002.xad

Created: 5/29/2012 12:29:39 PM
Modified: 5/29/2012 1:08:05 PM

Electrophoresis Assay Details

General Analysis Settings

Number of Available Sample and Ladder Wells (Max.) : 12
Minimum Visible Range [s] : 32
Maximum Visible Range [s] : 138
Start Analysis Time Range [s] : 33
End Analysis Time Range [s] : 137.5
Ladder Concentration [pg/μl] : 1950
Uses Standard Area for Ladder Fragments
Lower Marker Concentration [pg/μl] : 125
Upper Marker Concentration [pg/μl] : 75
Used Upper Marker for Quantitation
Standard Curve Fit is Point to Point
Show Data Aligned to Lower and Upper Marker

Integrator Settings

Integration Start Time [s] : 33.05
Integration End Time [s] : 137
Slope Threshold : 0.8
Height Threshold [FU] : 5
Area Threshold : 0.1
Width Threshold [s] : 0.6
Baseline Plateau [s] : 0.5

Filter Settings

Filter Width [s] : 0.5
Polynomial Order : 4

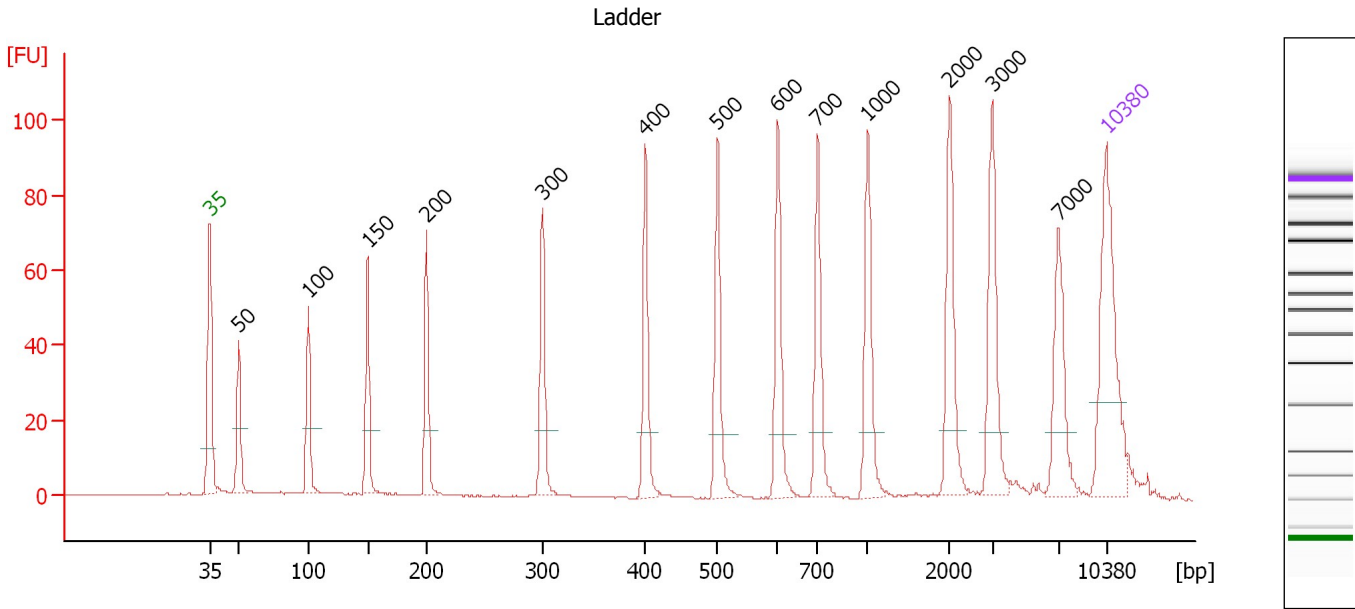
Ladder

Ladder Peak	Size	Area
1	35	160
2	50	210
3	100	208
4	150	221
5	200	242
6	300	270
7	400	305
8	500	306
9	600	336
10	700	321
11	1000	366
12	2000	413
13	3000	411
14	7000	400
15	10380	214

Assay Class: High Sensitivity DNA Assay
 Data Path: C:\...ents and Settings\Bioanalyzer\2012-05-29\2012-05-29_002.xad

Created: 5/29/2012 12:29:39 PM
 Modified: 5/29/2012 1:08:05 PM

Electropherogram Summary



Overall Results for Ladder

Noise: 0.1

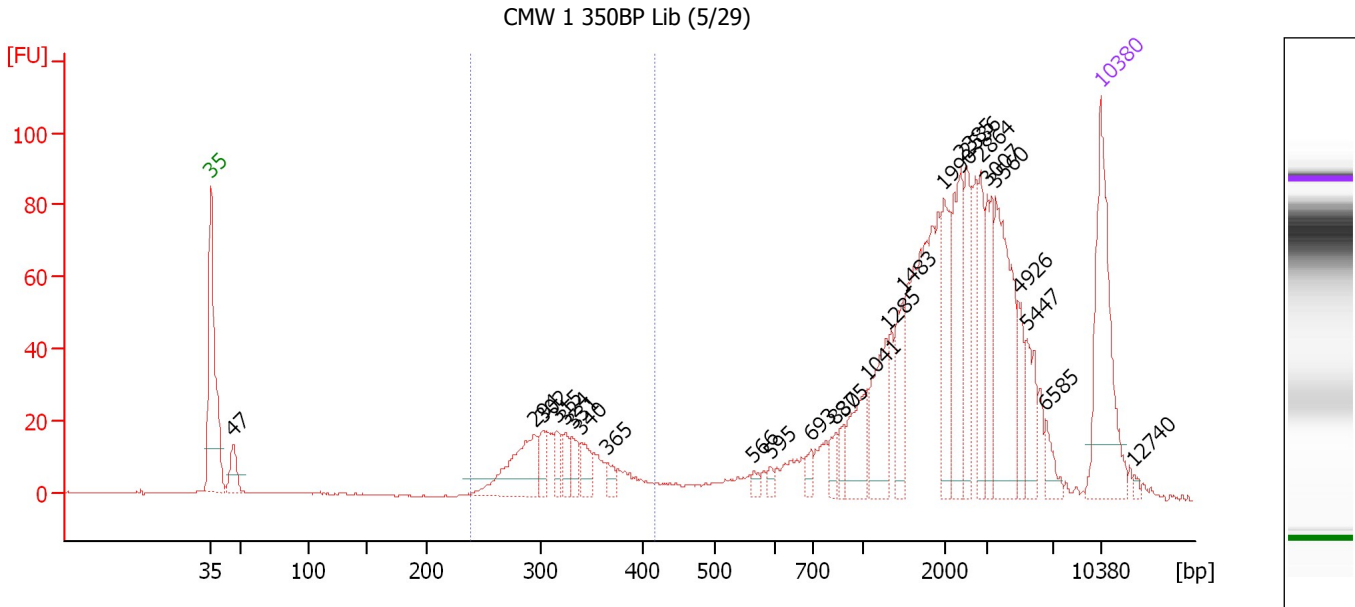
Peak table for Ladder

Peak	Size [bp]	Conc. [pg/μl]	Molarity [pmol/l]	Observations
1	35	125.00	5,411.3	Lower Marker
2	50	150.00	4,545.5	Ladder Peak
3	100	150.00	2,272.7	Ladder Peak
4	150	150.00	1,515.2	Ladder Peak
5	200	150.00	1,136.4	Ladder Peak
6	300	150.00	757.6	Ladder Peak
7	400	150.00	568.2	Ladder Peak
8	500	150.00	454.5	Ladder Peak
9	600	150.00	378.8	Ladder Peak
10	700	150.00	324.7	Ladder Peak
11	1,000	150.00	227.3	Ladder Peak
12	2,000	150.00	113.6	Ladder Peak
13	3,000	150.00	75.8	Ladder Peak
14	7,000	150.00	32.5	Ladder Peak
15	10,380	75.00	10.9	Upper Marker

Assay Class: High Sensitivity DNA Assay
 Data Path: C:\...ents and Settings\Bioanalyzer\2012-05-29\2012-05-29_002.xad

Created: 5/29/2012 12:29:39 PM
 Modified: 5/29/2012 1:08:05 PM

Electropherogram Summary Continued ...



Overall Results for sample 1 : CMW 1 350BP Lib (5/29)

Number of peaks found: 26 Corr. Area 1: 209.3
 Noise: 0.1


Peak table for sample 1 : CMW 1 350BP Lib (5/29)

Peak	Size [bp]	Conc. [pg/μl]	Molarity [pmol/l]	Observations
1	35	125.00	5,411.3	Lower Marker
2	47	24.49	793.5	
3	294	61.57	317.2	
4	302	15.33	76.9	
5	315	12.97	62.3	
6	324	12.12	56.7	
7	331	15.27	70.0	
8	340	16.05	71.5	
9	365	8.13	33.7	
10	566	4.27	11.4	
11	595	4.04	10.3	
12	693	7.54	16.5	
13	830	9.93	18.1	
14	875	9.15	15.8	
15	1,041	33.05	48.1	
16	1,285	40.99	48.3	
17	1,483	27.67	28.3	
18	1,990	37.52	28.6	
19	2,385	54.25	34.5	
20	2,536	33.72	20.1	
21	2,864	28.24	14.9	
22	3,007	32.64	16.4	
23	3,560	78.31	33.3	
24	4,926	16.26	5.0	
25	5,447	23.19	6.5	
26	6,585	10.33	2.4	


Assay Class: High Sensitivity DNA Assay
Data Path: C:\...ents and Settings\Bioanalyzer\2012-05-29\2012-05-29_002.xad

Created: 5/29/2012 12:29:39 PM
Modified: 5/29/2012 1:08:05 PM

Electropherogram Summary Continued ...**... Peak table for sample 1 : CMW 1 350BP Lib (5/29)**

Peak	Size [bp]	Conc. [pg/μl]	Molarity [pmol/l]	Observations
27	 10,380	75.00	10.9	Upper Marker
28	12,740	0.00	0.0	

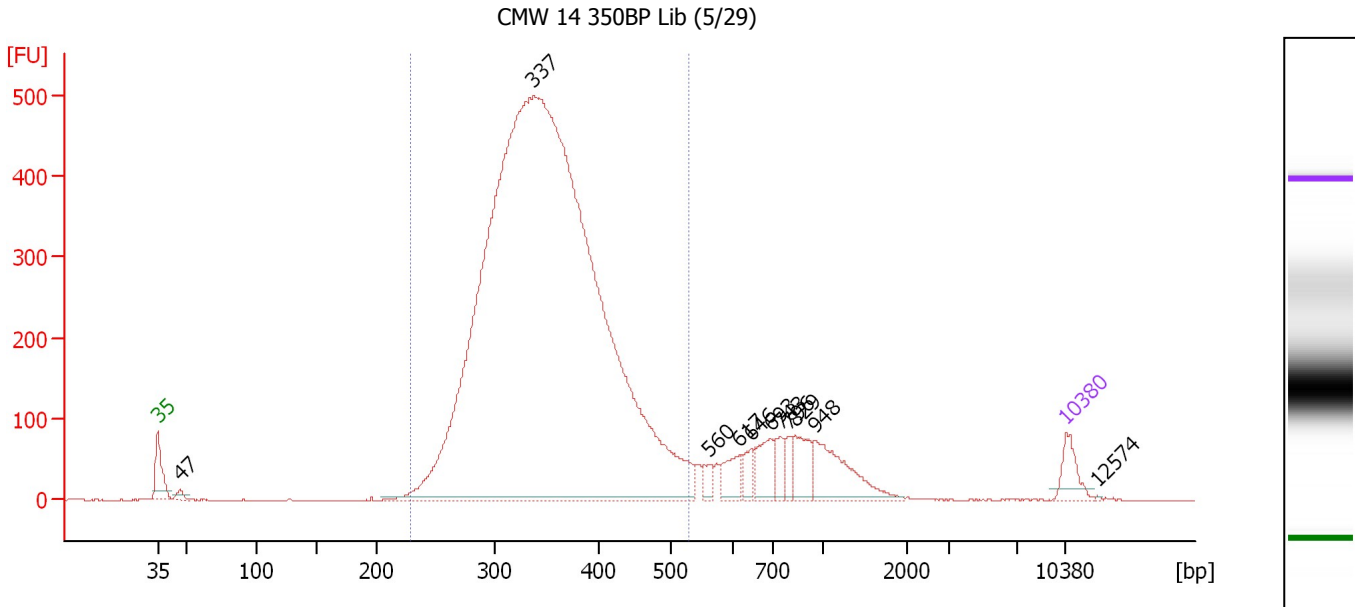
Region table for sample 1 : CMW 1 350BP Lib (5/29)

From [bp]	To [bp]	Average Size [bp]	Molarity [pmol/l]	Conc. [pg/μl]	Corr. Area	% of Total	Size distribution in CV [%]	Color
238	417	322	877.3	183.62	209.3	16	11.5	

Assay Class: High Sensitivity DNA Assay
 Data Path: C:\...ents and Settings\Bioanalyzer\2012-05-29\2012-05-29_002.xad

Created: 5/29/2012 12:29:39 PM
 Modified: 5/29/2012 1:08:05 PM

Electropherogram Summary Continued ...



Overall Results for sample 2 : CMW 14 350BP Lib (5/29)

Number of peaks found: 11 Corr. Area 1: 7,447.5
 Noise: 0.2

Peak table for sample 2 : CMW 14 350BP Lib (5/29)

Peak	Size [bp]	Conc. [pg/µl]	Molarity [pmol/l]	Observations
1	35	125.00	5,411.3	Lower Marker
2	47	28.52	929.1	
3	337	8,452.50	37,981.7	
4	560	40.26	108.9	
5	617	96.30	236.4	
6	646	59.38	139.3	
7	693	125.14	273.6	
8	743	66.12	134.8	
9	796	47.21	89.9	
10	829	121.84	222.7	
11	948	242.64	387.8	
12	10,380	75.00	10.9	Upper Marker
13	12,574	0.00	0.0	

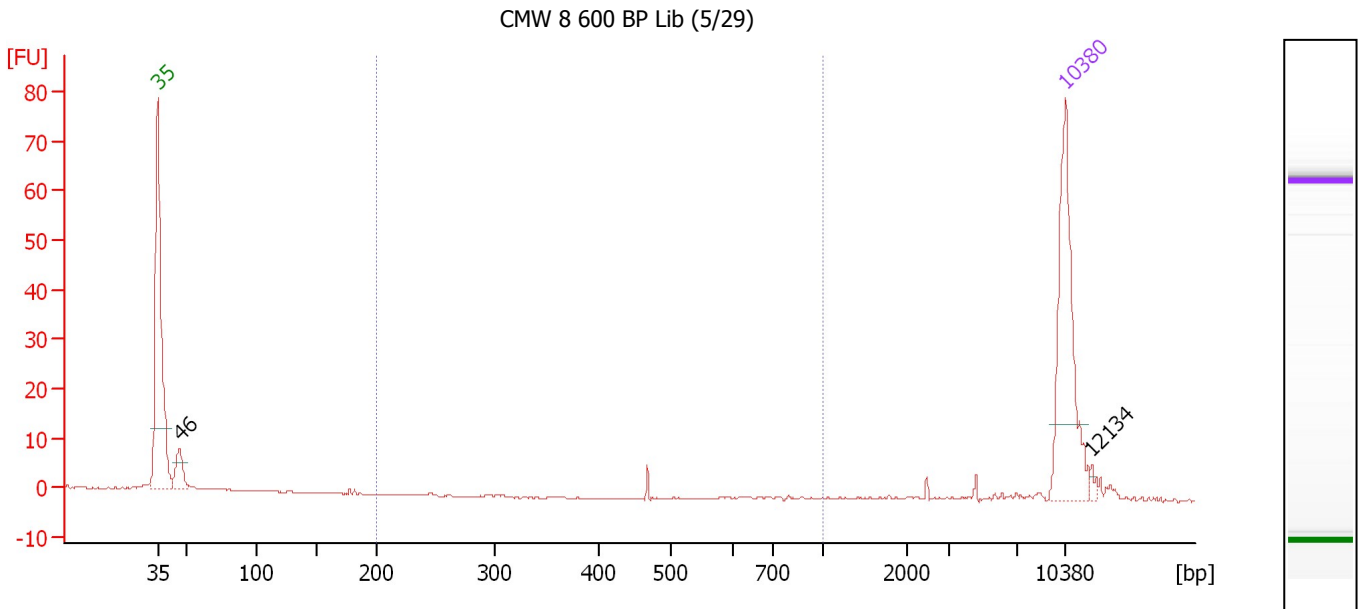
Region table for sample 2 : CMW 14 350BP Lib (5/29)

From [bp]	To [bp]	Average Size [bp]	Molarity [pmol/l]	Conc. [pg/µl]	Corr. Area	% of Total	Size distribution in CV [%]	Color
228	530	352	36,733.3	8,270.53	7,447.5	88	15.6	Blue

Assay Class: High Sensitivity DNA Assay
 Data Path: C:\...ents and Settings\Bioanalyzer\2012-05-29\2012-05-29_002.xad

Created: 5/29/2012 12:29:39 PM
 Modified: 5/29/2012 1:08:05 PM

Electropherogram Summary Continued ...



Overall Results for sample 3 : CMW 8 600 BP Lib (5/29)

Number of peaks found: 2 Corr. Area 1: 1.3
 Noise: 0.2

Peak table for sample 3 : CMW 8 600 BP Lib (5/29)

Peak	Size [bp]	Conc. [pg/μl]	Molarity [pmol/l]	Observations
1	35	125.00	5,411.3	Lower Marker
2	46	22.34	730.0	
3	10,380	75.00	10.9	Upper Marker
4	12,134	0.00	0.0	

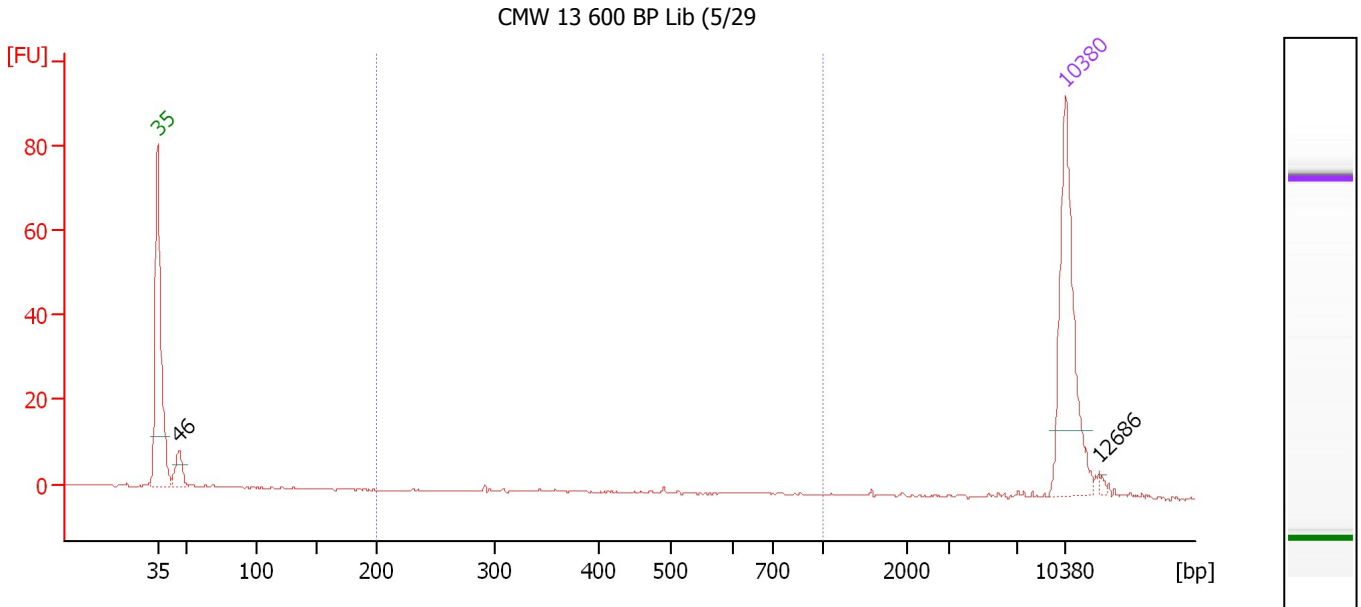
Region table for sample 3 : CMW 8 600 BP Lib (5/29)

From [bp]	To [bp]	Average Size [bp]	Molarity [pmol/l]	Conc. [pg/μl]	Corr. Area	% of Total	Size distribution in CV [%]	Color
200	1,000	478	5.0	1.56	1.3	4	12.4	Blue

Assay Class: High Sensitivity DNA Assay
 Data Path: C:\...ents and Settings\Bioanalyzer\2012-05-29\2012-05-29_002.xad

Created: 5/29/2012 12:29:39 PM
 Modified: 5/29/2012 1:08:05 PM

Electropherogram Summary Continued ...



Overall Results for sample 4 : CMW 13 600 BP Lib (5/29)

Number of peaks found: 2 Corr. Area 1: 2.5
 Noise: 0.1

Peak table for sample 4 : CMW 13 600 BP Lib (5/29)

Peak	Size [bp]	Conc. [pg/μl]	Molarity [pmol/l]	Observations
1	35	125.00	5,411.3	Lower Marker
2	46	19.16	631.1	
3	10,380	75.00	10.9	Upper Marker
4	12,686	0.00	0.0	

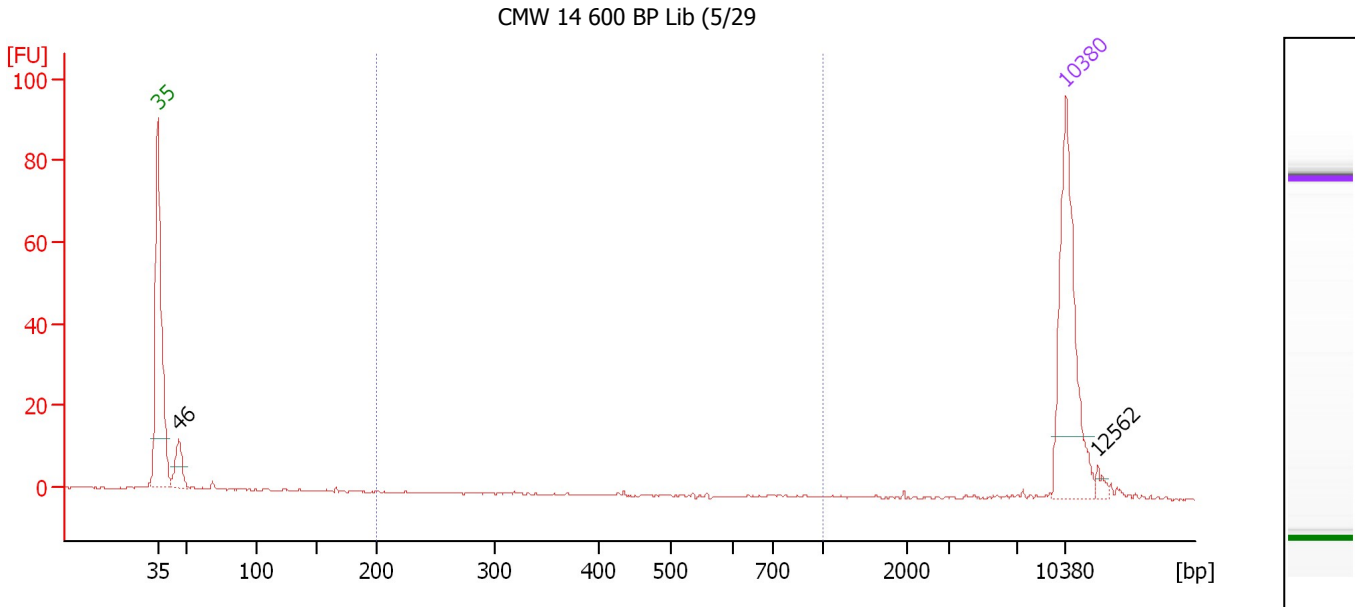
Region table for sample 4 : CMW 13 600 BP Lib (5/29)

From [bp]	To [bp]	Average Size [bp]	Molarity [pmol/l]	Conc. [pg/μl]	Corr. Area	% of Total	Size distribution in CV [%]	Color
200	1,000	522	8.5	2.46	2.5	8	34.8	Blue

Assay Class: High Sensitivity DNA Assay
 Data Path: C:\...ents and Settings\Bioanalyzer\2012-05-29\2012-05-29_002.xad

Created: 5/29/2012 12:29:39 PM
 Modified: 5/29/2012 1:08:05 PM

Electropherogram Summary Continued ...



Overall Results for sample 5 : CMW 14 600 BP Lib (5/29)

Number of peaks found: 2 Corr. Area 1: 0.1
 Noise: 0.1

Peak table for sample 5 : CMW 14 600 BP Lib (5/29)

Peak	Size [bp]	Conc. [pg/μl]	Molarity [pmol/l]	Observations
1	35	125.00	5,411.3	Lower Marker
2	46	23.79	785.7	
3	10,380	75.00	10.9	Upper Marker
4	12,562	0.00	0.0	

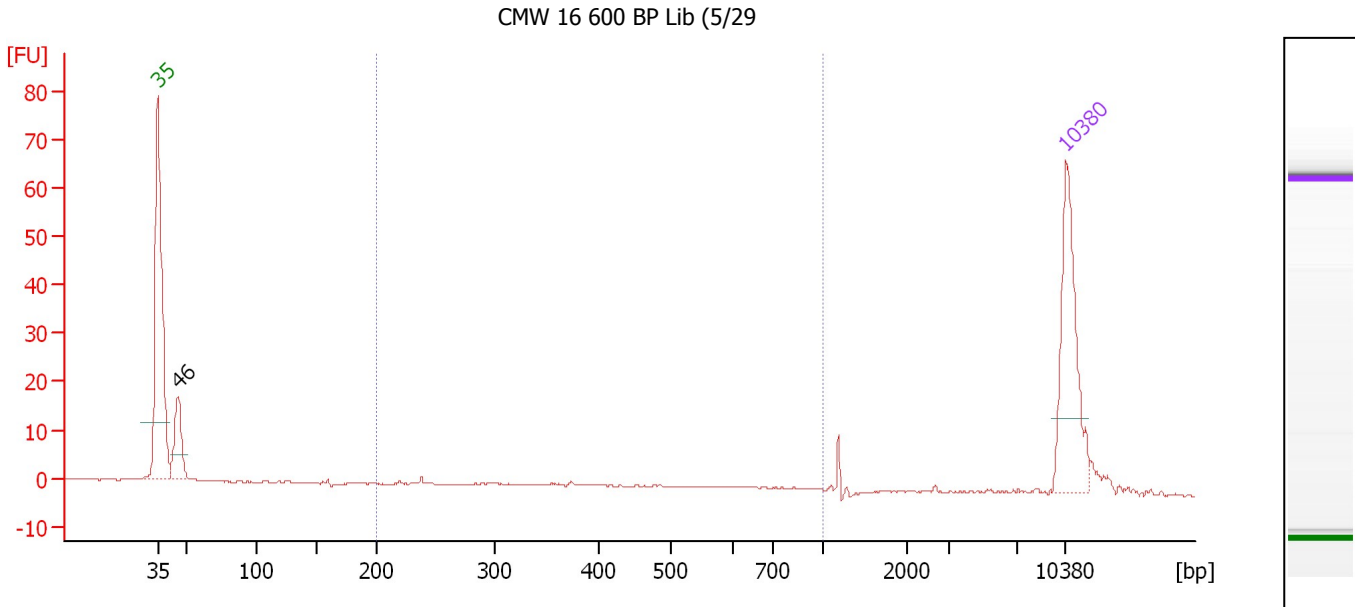
Region table for sample 5 : CMW 14 600 BP Lib (5/29)

From [bp]	To [bp]	Average Size [bp]	Molarity [pmol/l]	Conc. [pg/μl]	Corr. Area	% of Total	Size distribution in CV [%]	Color
200	1,000	544	0.3	0.09	0.1	0	28.7	Blue

Assay Class: High Sensitivity DNA Assay
 Data Path: C:\...ents and Settings\Bioanalyzer\2012-05-29\2012-05-29_002.xad

Created: 5/29/2012 12:29:39 PM
 Modified: 5/29/2012 1:08:05 PM

Electropherogram Summary Continued ...



Overall Results for sample 6 : CMW 16 600 BP Lib (5/29)

Number of peaks found: 1 Corr. Area 1: 15.7
 Noise: 0.2

Peak table for sample 6 : CMW 16 600 BP Lib (5/29)

Peak	Size [bp]	Conc. [pg/μl]	Molarity [pmol/l]	Observations
1	35	125.00	5,411.3	Lower Marker
2	46	50.16	1,662.8	
3	10,380	75.00	10.9	Upper Marker

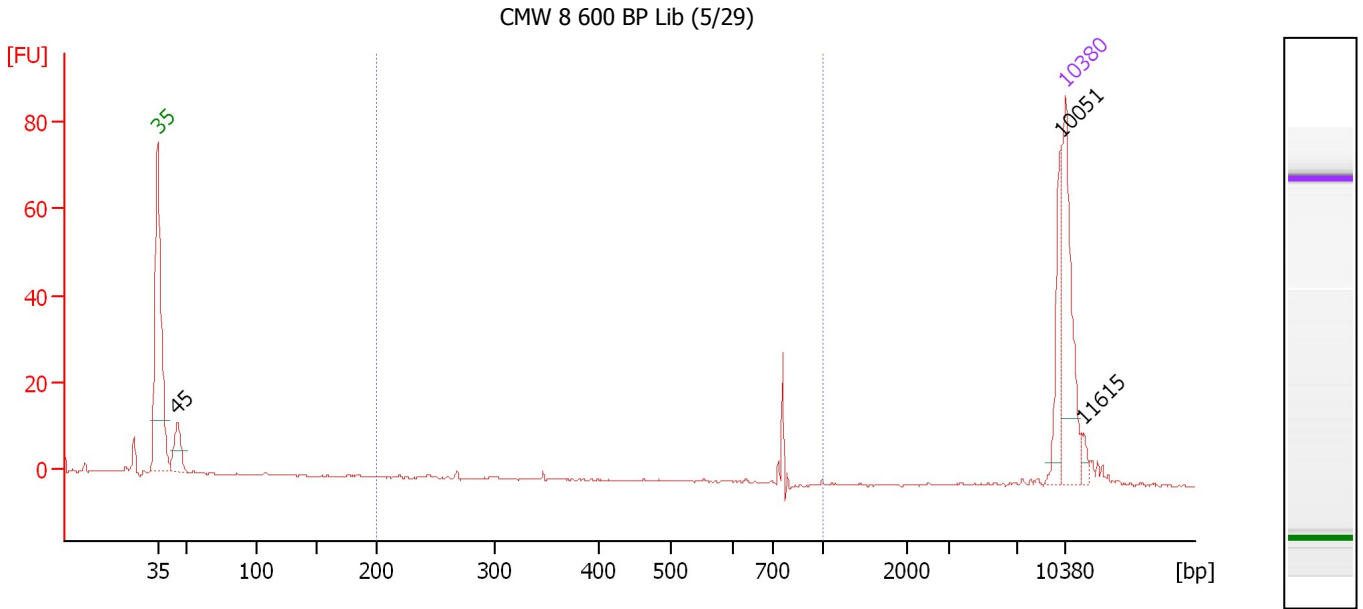
Region table for sample 6 : CMW 16 600 BP Lib (5/29)

From [bp]	To [bp]	Average Size [bp]	Molarity [pmol/l]	Conc. [pg/μl]	Corr. Area	% of Total	Size distribution in CV [%]	Color
200	1,000	489	78.9	20.78	15.7	24	37.5	Blue

Assay Class: High Sensitivity DNA Assay
 Data Path: C:\...ents and Settings\Bioanalyzer\2012-05-29\2012-05-29_002.xad

Created: 5/29/2012 12:29:39 PM
 Modified: 5/29/2012 1:08:05 PM

Electropherogram Summary Continued ...



Overall Results for sample 7 : CMW 8 600 BP Lib (5/29)

Number of peaks found: 3 Corr. Area 1: 7.5
 Noise: 0.1

Peak table for sample 7 : CMW 8 600 BP Lib (5/29)

Peak	Size [bp]	Conc. [pg/μl]	Molarity [pmol/l]	Observations
1	35	125.00	5,411.3	Lower Marker
2	45	42.43	1,423.4	
3	10,051	43.74	6.6	
4	10,380	75.00	10.9	Upper Marker
5	11,615	0.00	0.0	

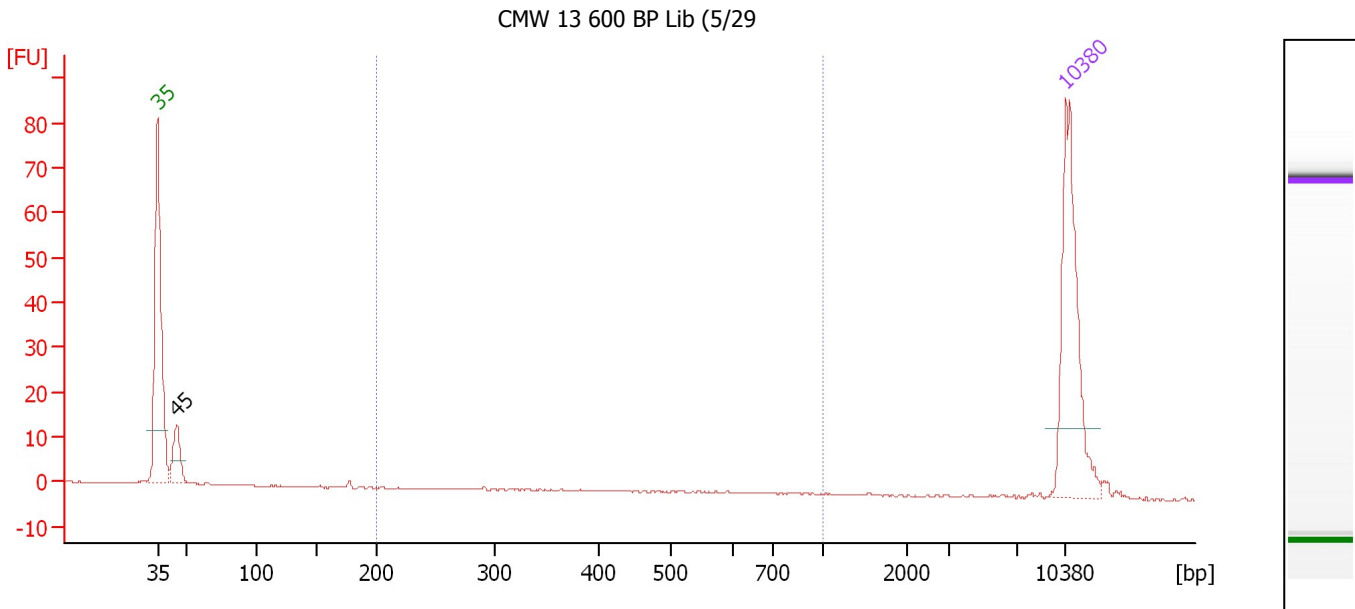
Region table for sample 7 : CMW 8 600 BP Lib (5/29)

From [bp]	To [bp]	Average Size [bp]	Molarity [pmol/l]	Conc. [pg/μl]	Corr. Area	% of Total	Size distribution in CV [%]	Color
200	1,000	720	28.3	11.82	7.5	9	17.3	Blue

Assay Class: High Sensitivity DNA Assay
 Data Path: C:\...ents and Settings\Bioanalyzer\2012-05-29\2012-05-29_002.xad

Created: 5/29/2012 12:29:39 PM
 Modified: 5/29/2012 1:08:05 PM

Electropherogram Summary Continued ...



Overall Results for sample 8 : CMW 13 600 BP Lib (5/29)

Number of peaks found: 1 Corr. Area 1: 3.8
 Noise: 0.2

Peak table for sample 8 : CMW 13 600 BP Lib (5/29)

Peak	Size [bp]	Conc. [pg/μl]	Molarity [pmol/l]	Observations
1	35	125.00	5,411.3	Lower Marker
2	45	29.32	994.7	
3	10,380	75.00	10.9	Upper Marker

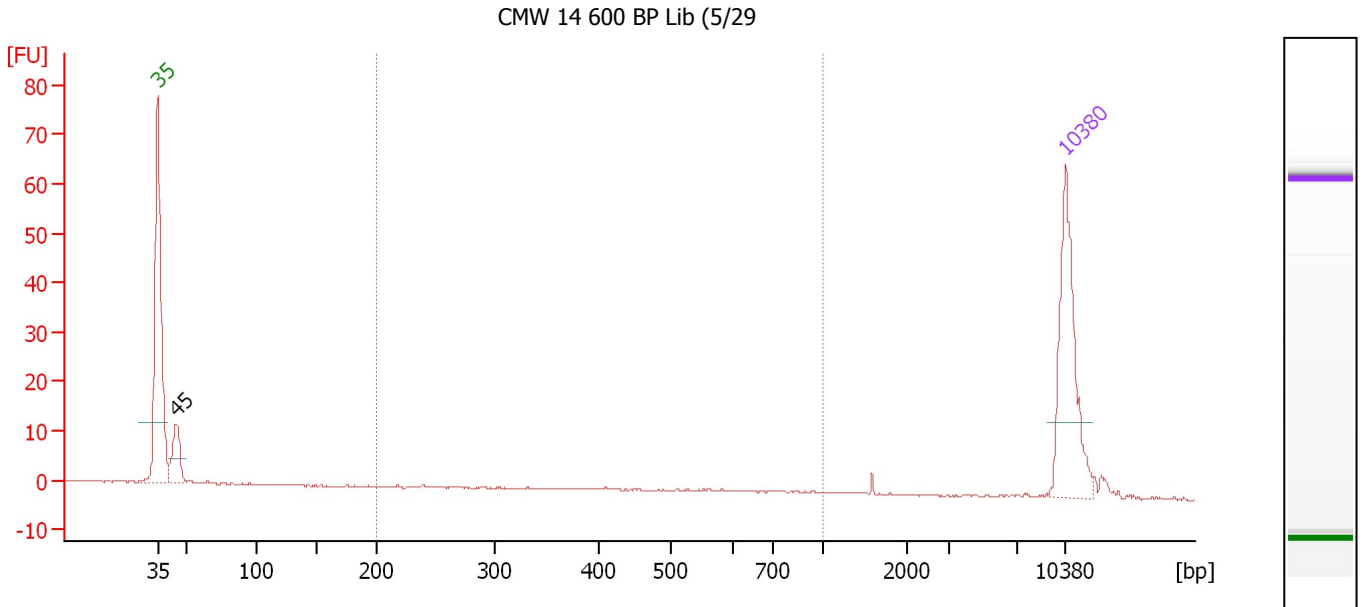
Region table for sample 8 : CMW 13 600 BP Lib (5/29)

From [bp]	To [bp]	Average Size [bp]	Molarity [pmol/l]	Conc. [pg/μl]	Corr. Area	% of Total	Size distribution in CV [%]	Color
200	1,000	579	10.9	3.59	3.8	10	31.2	Blue

Assay Class: High Sensitivity DNA Assay
 Data Path: C:\...ents and Settings\Bioanalyzer\2012-05-29\2012-05-29_002.xad

Created: 5/29/2012 12:29:39 PM
 Modified: 5/29/2012 1:08:05 PM

Electropherogram Summary Continued ...



Overall Results for sample 9 : CMW 14 600 BP Lib (5/29)

Number of peaks found: 1 Corr. Area 1: 5.6
 Noise: 0.1

Peak table for sample 9 : CMW 14 600 BP Lib (5/29)

Peak	Size [bp]	Conc. [pg/μl]	Molarity [pmol/l]	Observations
1	35	125.00	5,411.3	Lower Marker
2	45	38.40	1,300.9	
3	10,380	75.00	10.9	Upper Marker

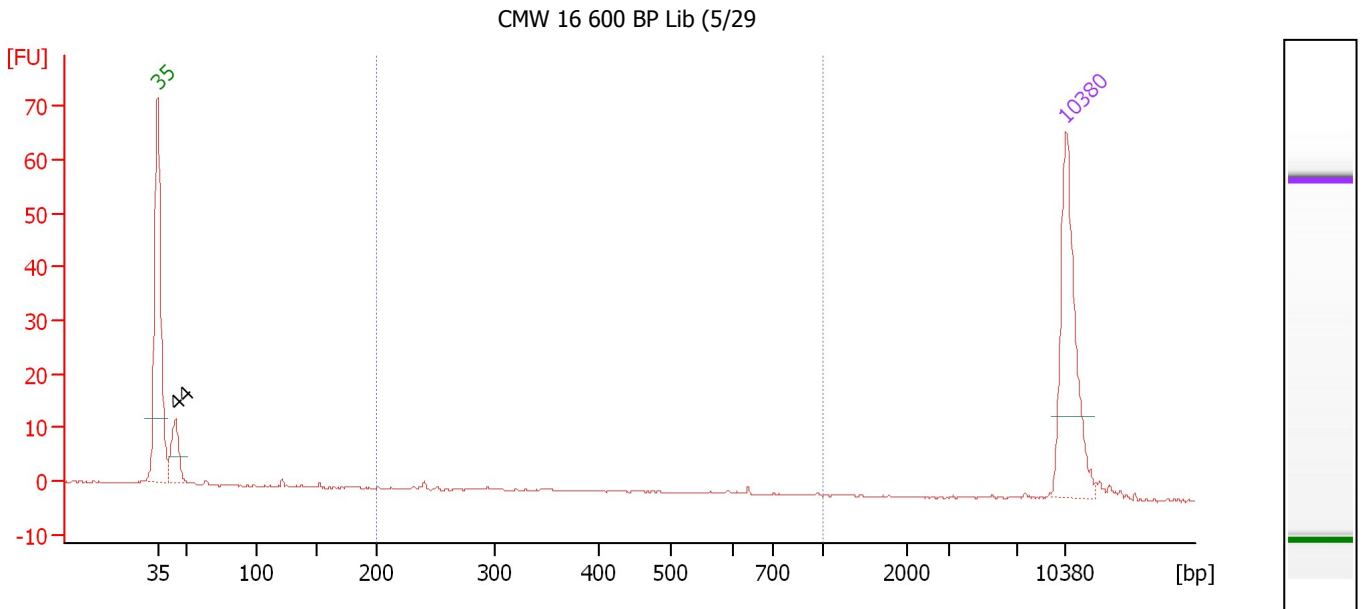
Region table for sample 9 : CMW 14 600 BP Lib (5/29)

From [bp]	To [bp]	Average Size [bp]	Molarity [pmol/l]	Conc. [pg/μl]	Corr. Area	% of Total	Size distribution in CV [%]	Color
200	1,000	548	24.3	7.37	5.6	15	32.8	Blue

Assay Class: High Sensitivity DNA Assay
 Data Path: C:\...ents and Settings\Bioanalyzer\2012-05-29\2012-05-29_002.xad

Created: 5/29/2012 12:29:39 PM
 Modified: 5/29/2012 1:08:05 PM

Electropherogram Summary Continued ...



Overall Results for sample 10 : CMW 16 600 BP Lib (5/29)

Number of peaks found: 1 Corr. Area 1: 16.5
 Noise: 0.1

Peak table for sample 10 : CMW 16 600 BP Lib (5/29)

Peak	Size [bp]	Conc. [pg/μl]	Molarity [pmol/l]	Observations
1	35	125.00	5,411.3	Lower Marker
2	44	38.19	1,309.5	
3	10,380	75.00	10.9	Upper Marker

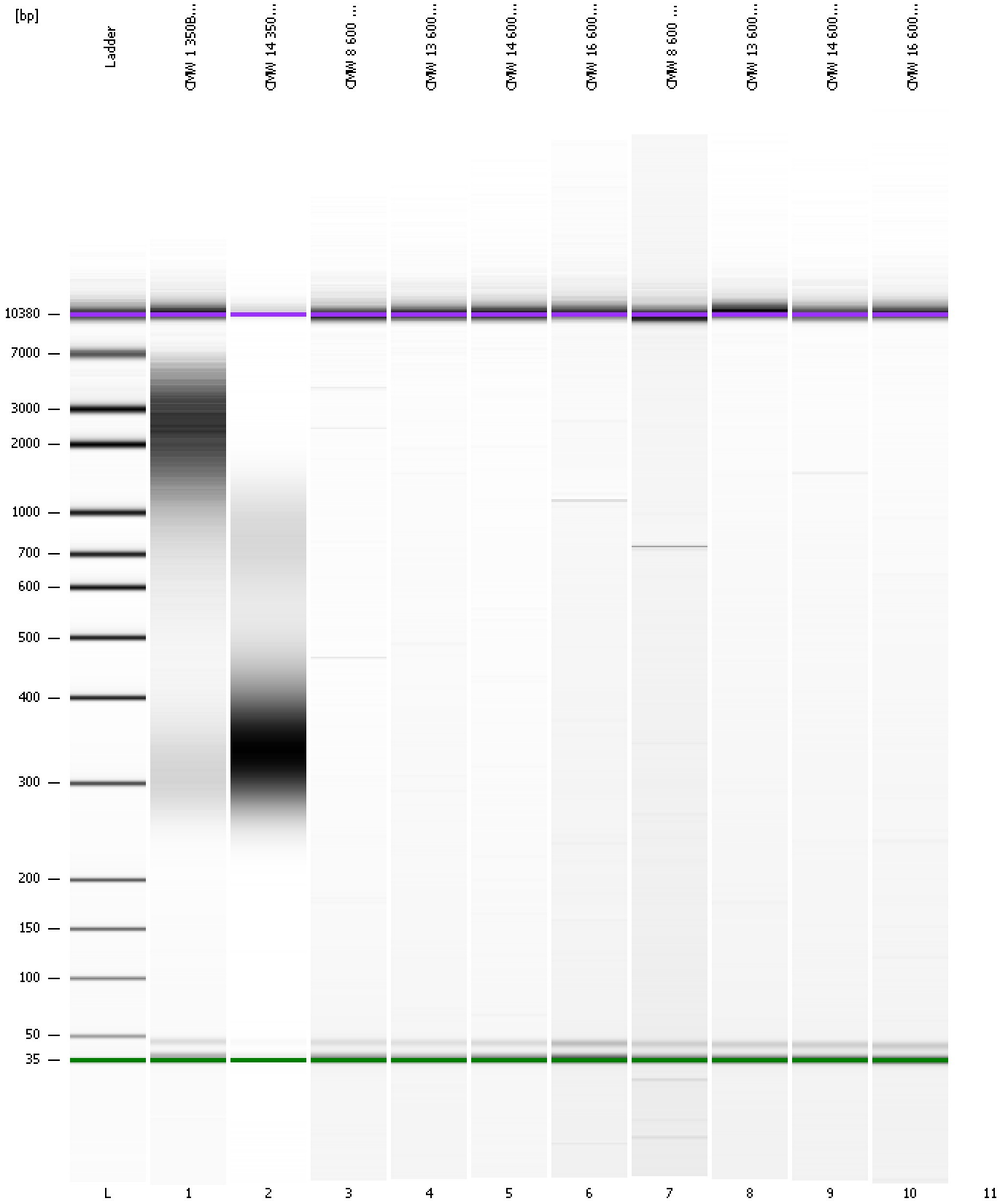
Region table for sample 10 : CMW 16 600 BP Lib (5/29)

From [bp]	To [bp]	Average Size [bp]	Molarity [pmol/l]	Conc. [pg/μl]	Corr. Area	% of Total	Size distribution in CV [%]	Color
200	1,000	431	102.7	23.42	16.5	21	41.0	Blue

Assay Class: High Sensitivity DNA Assay
Data Path: C:\...ents and Settings\Bioanalyzer\2012-05-29\2012-05-29_002.xad

Created: 5/29/2012 12:29:39 PM
Modified: 5/29/2012 1:08:05 PM

Gel Image



Assay Class: High Sensitivity DNA Assay
Data Path: C:\...ents and Settings\Bioanalyzer\2012-05-29\2012-05-29_002.xad

Created: 5/29/2012 12:29:39 PM
Modified: 5/29/2012 1:08:05 PM

Invalid Samples

Sample 11 has not been run, no results available.

Assay Class: High Sensitivity DNA Assay
 Data Path: C:\...ents and Settings\Bioanalyzer\2012-05-29\2012-05-29_002.xad

Created: 5/29/2012 12:29:39 PM
 Modified: 5/29/2012 1:08:05 PM

Run Logbook

Description	Number	Source	Category	Sub Category	Time	Time Zone	User	Host
Run ended on port 1 (Number of wells acquired: 11)		Instrument	Run		5/29/2012 1:08:01 PM	(GMT --07:00) Pacific Standard Time	UC Davis	D8XSMGH1
Run started on port 1 (File: C:\Documents and Settings\Bioanalyzer\2012-05-29\2012-05-29_002.xad)		Instrument	Run		5/29/2012 12:29:40 PM	(GMT --07:00) Pacific Standard Time	UC Davis	D8XSMGH1
Product Number : G2938B		Instrument	Run		5/29/2012 12:29:40 PM	(GMT --07:00) Pacific Standard Time	UC Davis	D8XSMGH1
Name :		Instrument	Run		5/29/2012 12:29:40 PM	(GMT --07:00) Pacific Standard Time	UC Davis	D8XSMGH1
Vendor : Agilent Technologies		Instrument	Run		5/29/2012 12:29:40 PM	(GMT --07:00) Pacific Standard Time	UC Davis	D8XSMGH1
Serial# : DE13701086		Instrument	Run		5/29/2012 12:29:40 PM	(GMT --07:00) Pacific Standard Time	UC Davis	D8XSMGH1
Firmware : C.01.069		Instrument	Run		5/29/2012 12:29:40 PM	(GMT --07:00) Pacific Standard Time	UC Davis	D8XSMGH1
Cartridge : Electrode		Instrument	Run		5/29/2012 12:29:40 PM	(GMT --07:00) Pacific Standard Time	UC Davis	D8XSMGH1