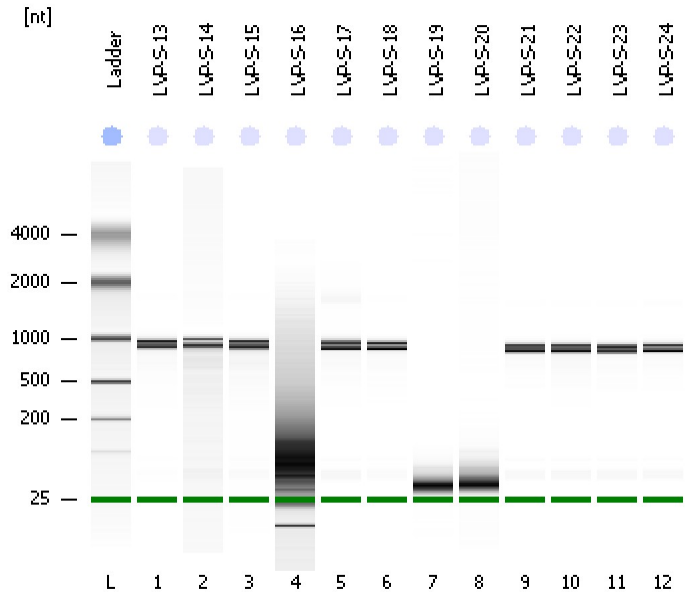


Assay Class: Eukaryote Total RNA Nano
Data Path: C:\...ents and Settings\Bioanalyzer\2012-05-29\2012-05-29_003.xad

Created: 5/29/2012 3:19:51 PM
Modified: 5/29/2012 3:44:35 PM

Electrophoresis File Run Summary



Instrument Information:

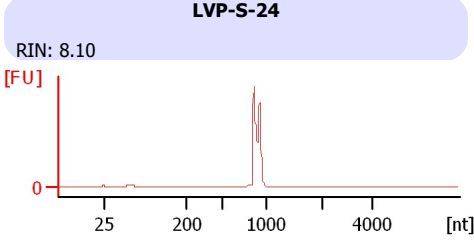
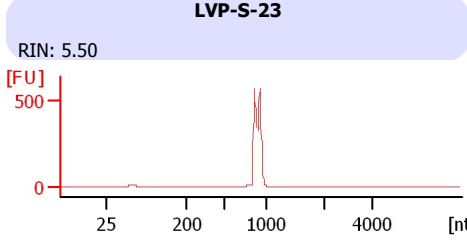
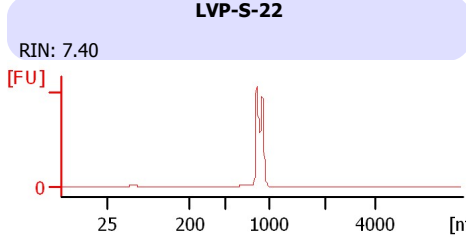
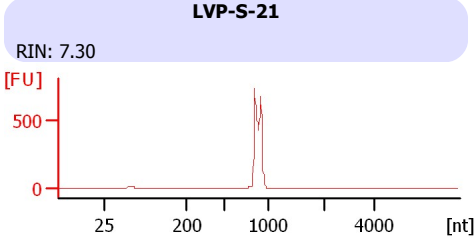
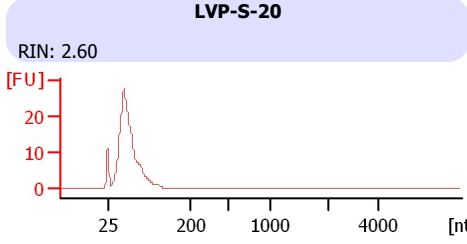
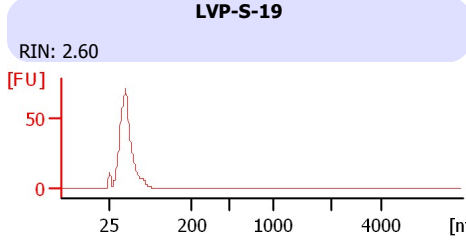
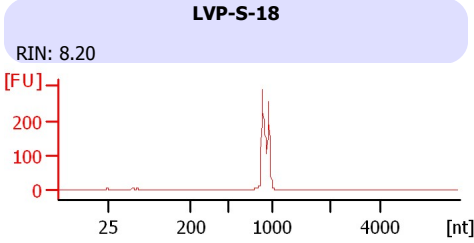
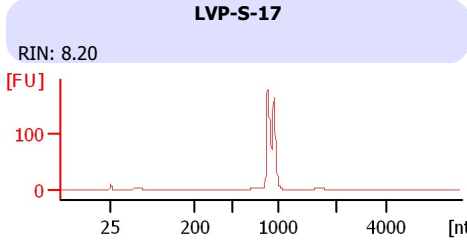
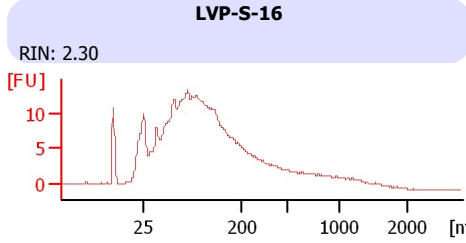
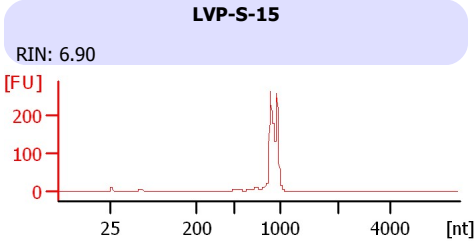
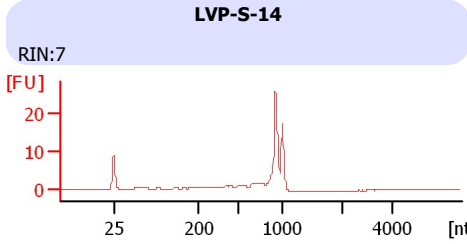
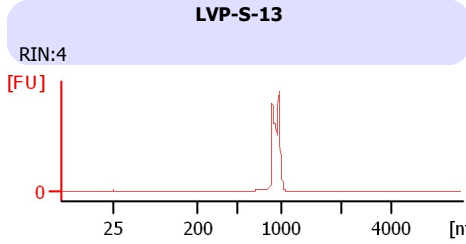
Instrument Name: DE13701086 Firmware: C.01.069
Serial#: DE13701086 Type: G2938B

Assay Information:

Assay Origin Path: C:\Program Files\Agilent\2100 bioanalyzer\2100 expert\assays\RNA\Eukaryote Total RNA Nano Series II.xsy
Assay Class: Eukaryote Total RNA Nano
Version: 2.6
Assay Comments: Total RNA Analysis ng sensitivity (Eukaryote)
© Copyright 2003 - 2009 Agilent Technologies, Inc.

Chip Information:

Chip Lot #:
Reagent Kit Lot #:
Chip Comments:



Assay Class: Eukaryote Total RNA Nano
 Data Path: C:\...ents and Settings\Bioanalyzer\2012-05-29\2012-05-29_003.xad

Created: 5/29/2012 3:19:51 PM
 Modified: 5/29/2012 3:44:35 PM

Electrophoresis File Run Summary (Chip Summary)

Sample Name	Sample Comment	Status	Result Label	Result Color
LVP-S-13		✓	RIN:4	
LVP-S-14		✓	RIN:7	
LVP-S-15		✓	RIN: 6.90	
LVP-S-16		✓	RIN: 2.30	
LVP-S-17		✓	RIN: 8.20	
LVP-S-18		✓	RIN: 8.20	
LVP-S-19		✓	RIN: 2.60	
LVP-S-20		✓	RIN: 2.60	
LVP-S-21		✓	RIN: 7.30	
LVP-S-22		✓	RIN: 7.40	
LVP-S-23		✓	RIN: 5.50	
LVP-S-24		✓	RIN: 8.10	
Ladder		✓	All Other Samples	

Chip Lot #

Reagent Kit Lot #

Chip Comments :

Assay Class: Eukaryote Total RNA Nano
Data Path: C:\...ents and Settings\Bioanalyzer\2012-05-29\2012-05-29_003.xad

Created: 5/29/2012 3:19:51 PM
Modified: 5/29/2012 3:44:35 PM

Electrophoresis Assay Details

General Analysis Settings

Number of Available Sample and Ladder Wells (Max.) : 13
Minimum Visible Range [s] : 17
Maximum Visible Range [s] : 70
Start Analysis Time Range [s] : 19
End Analysis Time Range [s] : 69
Ladder Concentration [ng/ μ l] : 150
Lower Marker Concentration [ng/ μ l] : 0
Upper Marker Concentration [ng/ μ l] : 0
Used Lower Marker for Quantitation
Standard Curve Fit is Logarithmic
Show Data Aligned to Lower Marker

Integrator Settings

Integration Start Time [s] : 19
Integration End Time [s] : 69
Slope Threshold : 0.6
Height Threshold [FU] : 0.5
Area Threshold : 0.2
Width Threshold [s] : 0.5
Baseline Plateau [s] : 6

Filter Settings

Filter Width [s] : 0.5
Polynomial Order : 4

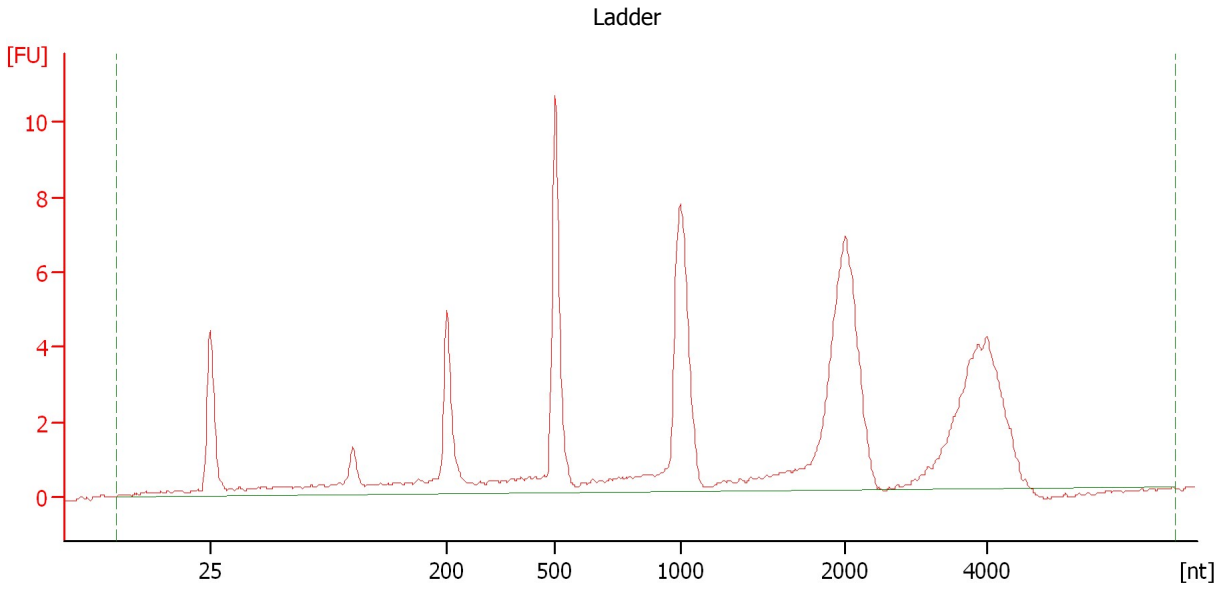
Ladder

Ladder Peak	Size
1	25
2	200
3	500
4	1000
5	2000
6	4000

Assay Class: Eukaryote Total RNA Nano
Data Path: C:\...ents and Settings\Bioanalyzer\2012-05-29\2012-05-29_003.xad

Created: 5/29/2012 3:19:51 PM
Modified: 5/29/2012 3:44:35 PM

Electropherogram Summary



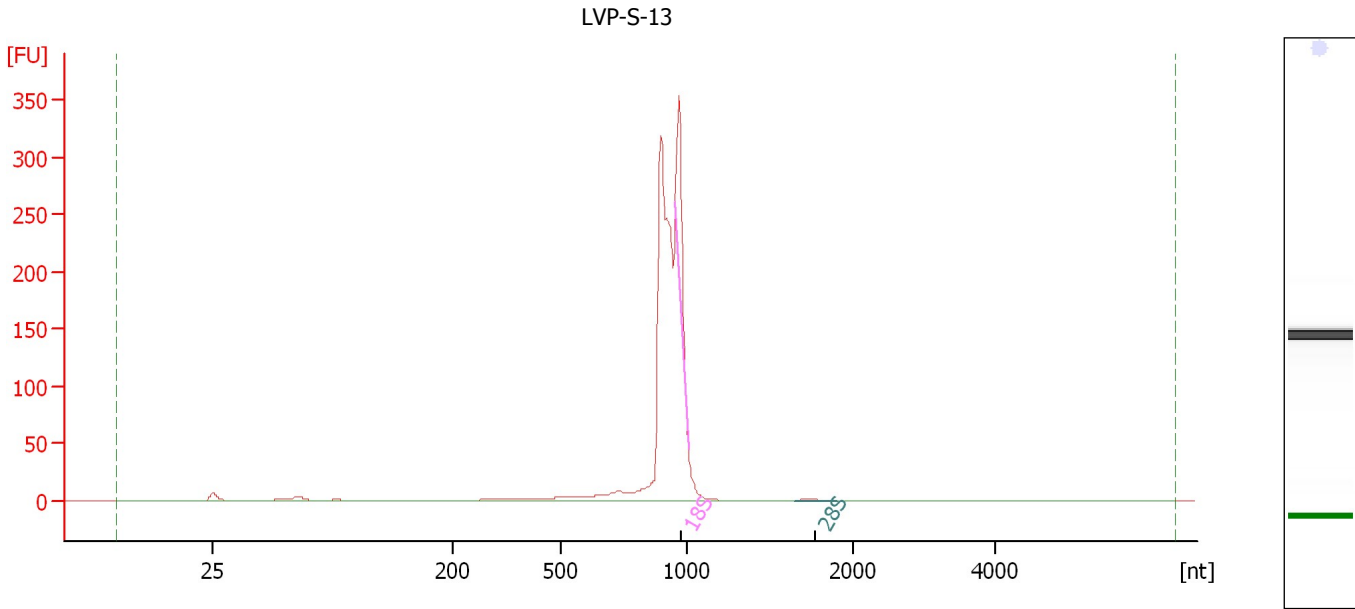
Overall Results for Ladder

RNA Area:	88.2	Result Flagging Color:	
RNA Concentration:	150 ng/μl	Result Flagging Label:	All Other Samples

Assay Class: Eukaryote Total RNA Nano
Data Path: C:\...ents and Settings\Bioanalyzer\2012-05-29\2012-05-29_003.xad

Created: 5/29/2012 3:19:51 PM
Modified: 5/29/2012 3:44:35 PM

Electropherogram Summary Continued ...



Overall Results for sample 1 : LVP-S-13

RNA Area: 890.2 RNA Integrity Number (RIN): 4 (B.02.08)
RNA Concentration: 1,514 ng/μl Result Flagging Color:
rRNA Ratio [28s / 18s]: 0.1 Result Flagging Label: RIN:4

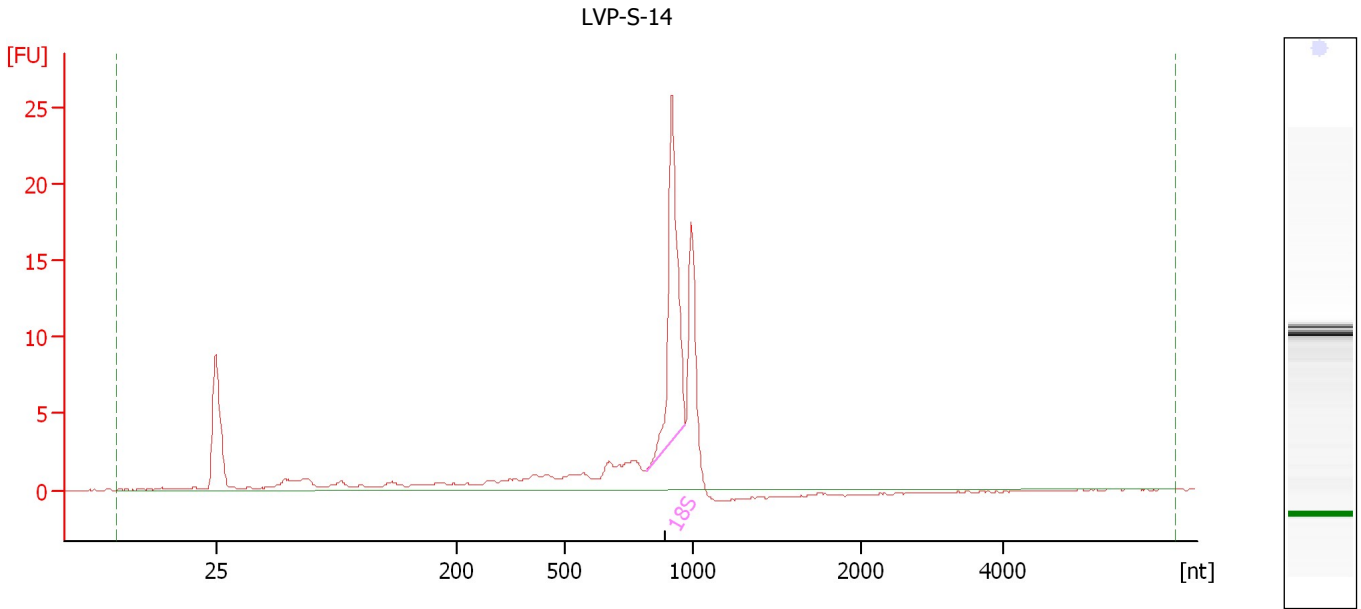
Fragment table for sample 1 : LVP-S-13

Name	Start Size [nt]	End Size [nt]	Area	% of total Area
18S	958	1,014	74.2	8.3
28S	1,649	1,899	3.7	0.4

Assay Class: Eukaryote Total RNA Nano
Data Path: C:\...ents and Settings\Bioanalyzer\2012-05-29\2012-05-29_003.xad

Created: 5/29/2012 3:19:51 PM
Modified: 5/29/2012 3:44:35 PM

Electropherogram Summary Continued ...



Overall Results for sample 2 : LVP-S-14

RNA Area: 81.8 RNA Integrity Number (RIN): 7 (B.02.08, Anomaly Threshold(s) manually adapted)
RNA Concentration: 139 ng/μl
rRNA Ratio [28s / 18s]: 0.0
Result Flagging Color:
Result Flagging Label: RIN:7

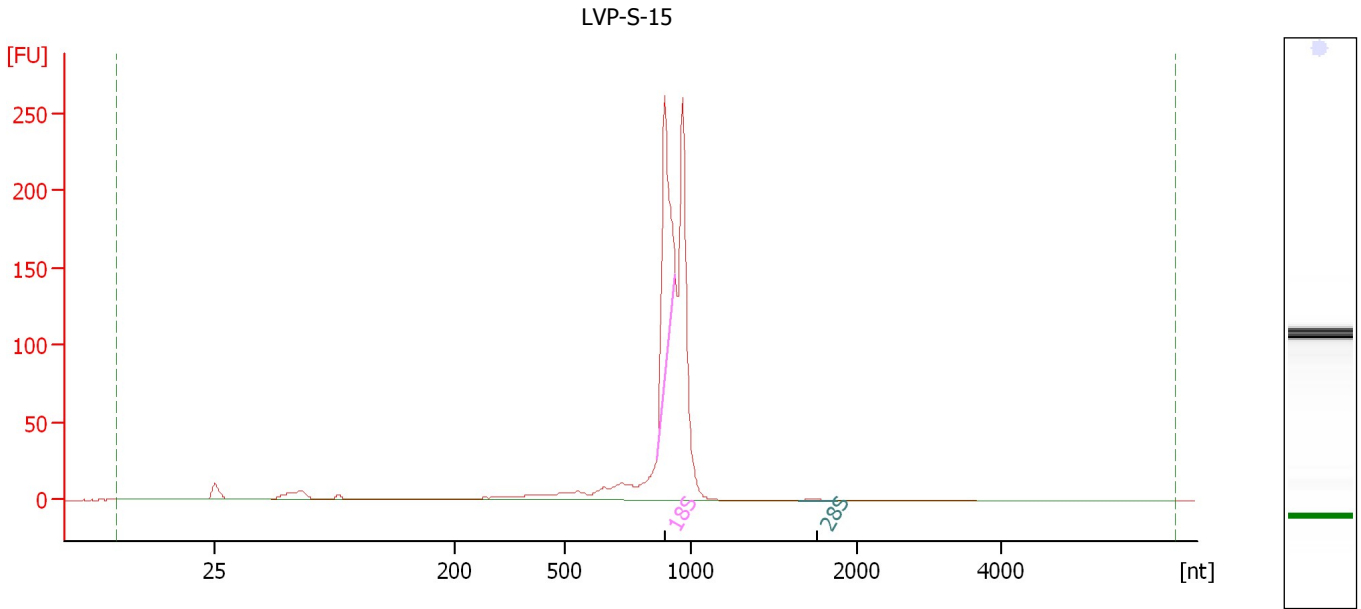
Fragment table for sample 2 : LVP-S-14

Name	Start Size [nt]	End Size [nt]	Area	% of total Area
18S	816	972	24.1	29.4

Assay Class: Eukaryote Total RNA Nano
Data Path: C:\...ents and Settings\Bioanalyzer\2012-05-29\2012-05-29_003.xad

Created: 5/29/2012 3:19:51 PM
Modified: 5/29/2012 3:44:35 PM

Electropherogram Summary Continued ...



Overall Results for sample 3 : LVP-S-15

RNA Area: 758.3 RNA Integrity Number (RIN): 6.9 (B.02.08, Anomaly Threshold(s) manually adapted)
RNA Concentration: 1,290 ng/μl
rRNA Ratio [28s / 18s]: 0.0
Result Flagging Color:
Result Flagging Label: RIN: 6.90

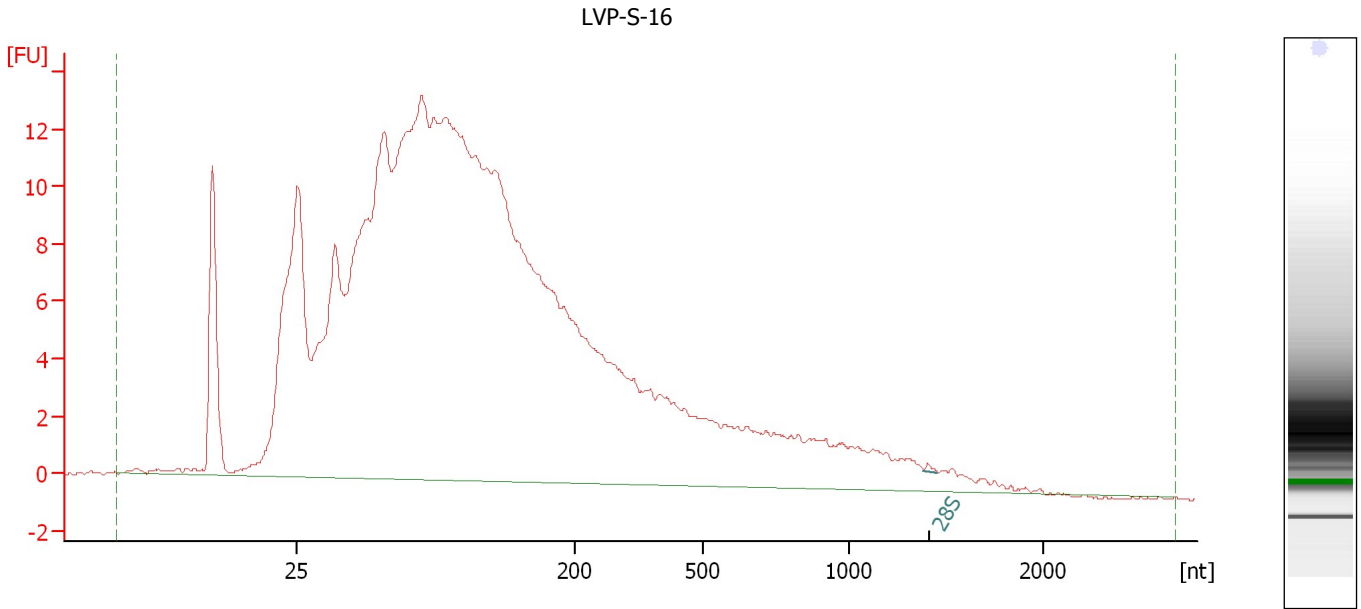
Fragment table for sample 3 : LVP-S-15

Name	Start Size [nt]	End Size [nt]	Area	% of total Area
18S	870	942	167.4	22.1
28S	1,647	1,877	2.4	0.3

Assay Class: Eukaryote Total RNA Nano
Data Path: C:\...ents and Settings\Bioanalyzer\2012-05-29\2012-05-29_003.xad

Created: 5/29/2012 3:19:51 PM
Modified: 5/29/2012 3:44:35 PM

Electropherogram Summary Continued ...



Overall Results for sample 4 : LVP-S-16

RNA Area:	444.3	RNA Integrity Number (RIN):	2.3 (B.02.08)
RNA Concentration:	756 ng/μl	Result Flagging Color:	
rRNA Ratio [28s / 18s]:	0.0	Result Flagging Label:	RIN: 2.30

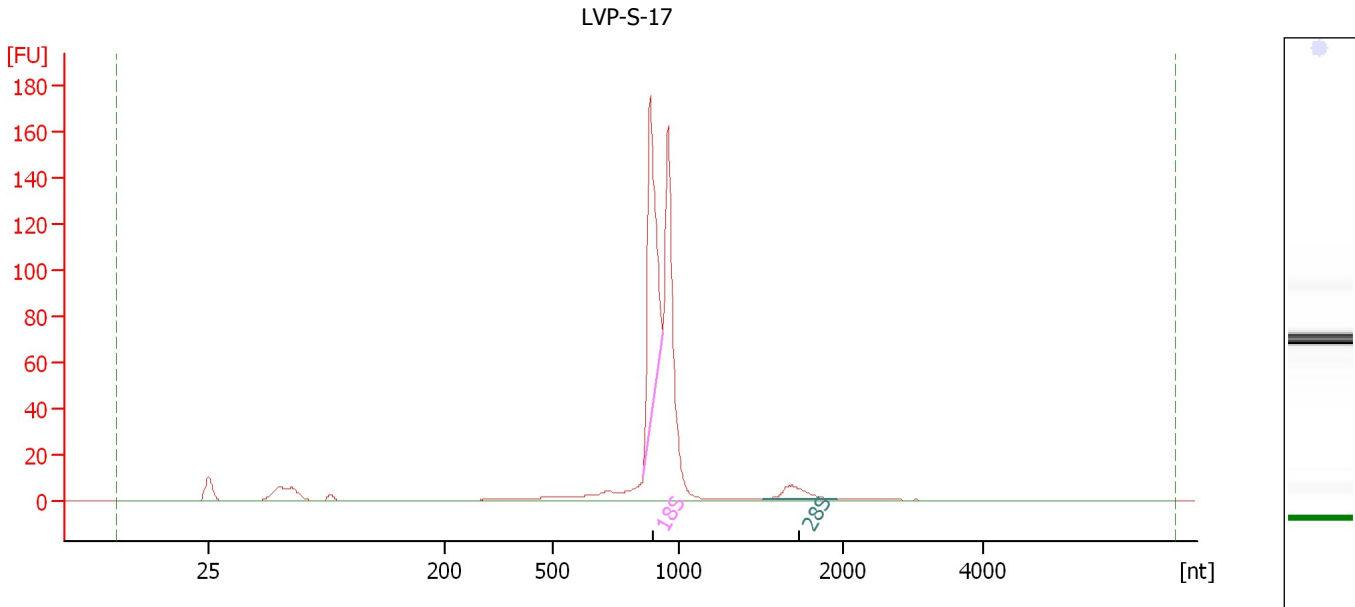
Fragment table for sample 4 : LVP-S-16

Name	Start Size [nt]	End Size [nt]	Area	% of total Area
28S	1,387	1,458	0.1	0.0

Assay Class: Eukaryote Total RNA Nano
Data Path: C:\...ents and Settings\Bioanalyzer\2012-05-29\2012-05-29_003.xad

Created: 5/29/2012 3:19:51 PM
Modified: 5/29/2012 3:44:35 PM

Electropherogram Summary Continued ...



Overall Results for sample 5 : LVP-S-17

RNA Area:	502.2	RNA Integrity Number (RIN):	8.2 (B.02.08, Anomaly Threshold(s) manually adapted)
RNA Concentration:	854 ng/μl	Result Flagging Color:	
rRNA Ratio [28s / 18s]:	0.1	Result Flagging Label:	RIN: 8.20

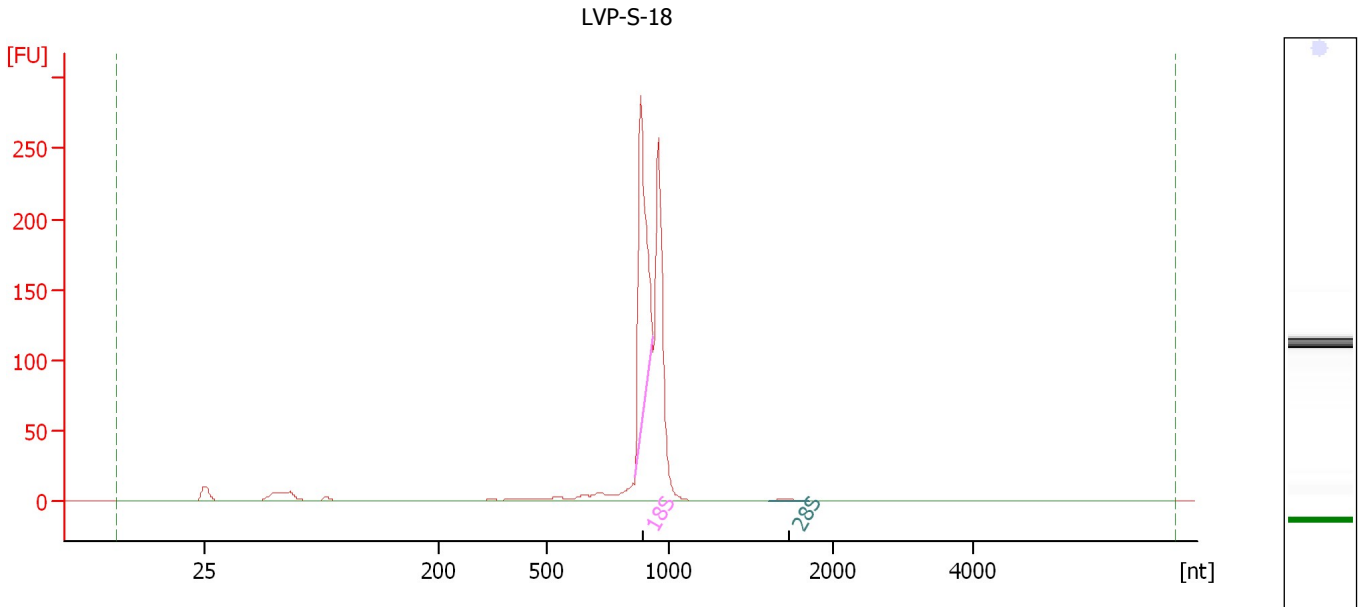
Fragment table for sample 5 : LVP-S-17

Name	Start Size [nt]	End Size [nt]	Area	% of total Area
18S	862	935	138.9	27.7
28S	1,516	1,962	14.1	2.8

Assay Class: Eukaryote Total RNA Nano
 Data Path: C:\...ents and Settings\Bioanalyzer\2012-05-29\2012-05-29_003.xad

Created: 5/29/2012 3:19:51 PM
 Modified: 5/29/2012 3:44:35 PM

Electropherogram Summary Continued ...



Overall Results for sample 6 : LVP-S-18

RNA Area:	680.2	RNA Integrity Number (RIN):	8.2 (B.02.08, Anomaly Threshold(s) manually adapted)
RNA Concentration:	1,157 ng/μl	Result Flagging Color:	
rRNA Ratio [28s / 18s]:	0.0	Result Flagging Label:	RIN: 8.20

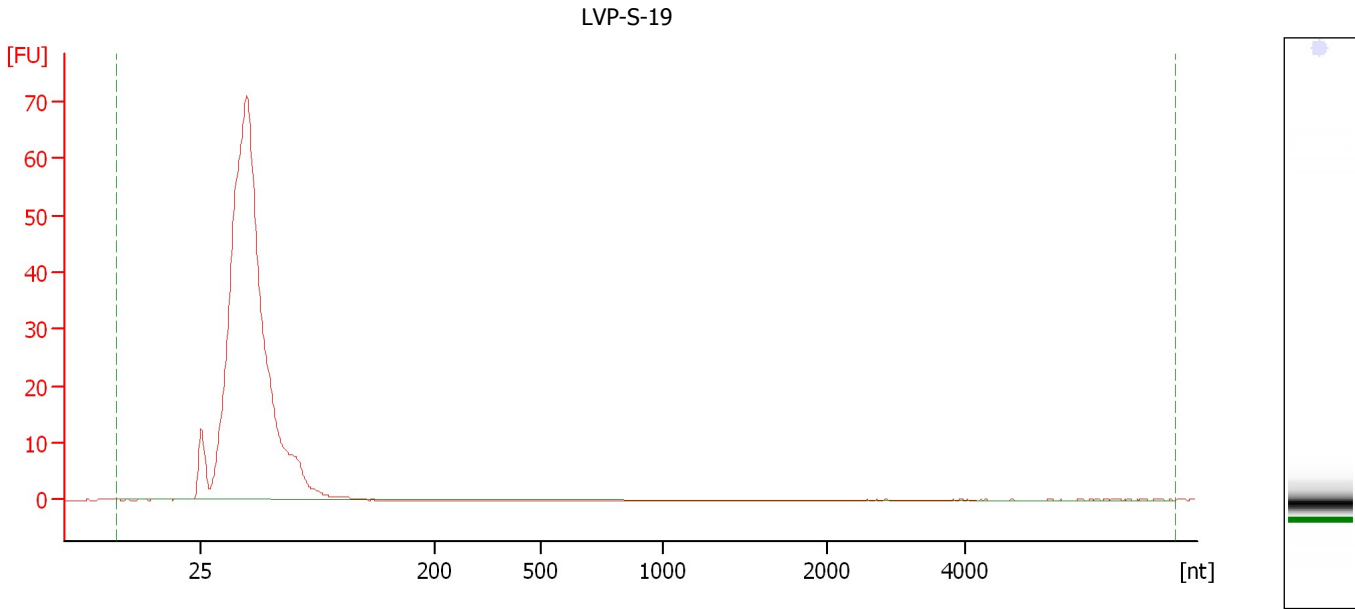
Fragment table for sample 6 : LVP-S-18

Name	Start Size [nt]	End Size [nt]	Area	% of total Area
18S	860	929	211.5	31.1
28S	1,610	1,845	2.9	0.4

Assay Class: Eukaryote Total RNA Nano
Data Path: C:\...ents and Settings\Bioanalyzer\2012-05-29\2012-05-29_003.xad

Created: 5/29/2012 3:19:51 PM
Modified: 5/29/2012 3:44:35 PM

Electropherogram Summary Continued ...



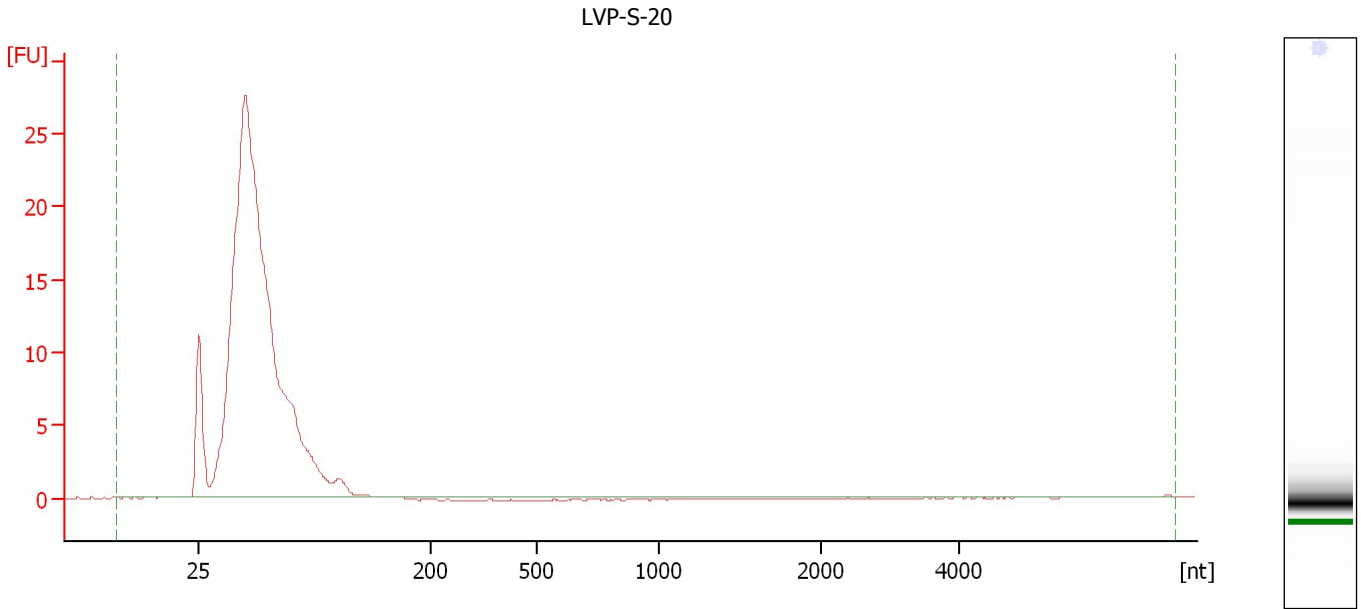
Overall Results for sample 7 : LVP-S-19

RNA Area:	482.3	RNA Integrity Number (RIN):	2.6 (B.02.08)
RNA Concentration:	820 ng/μl	Result Flagging Color:	
rRNA Ratio [28s / 18s]:	0.0	Result Flagging Label:	RIN: 2.60

Assay Class: Eukaryote Total RNA Nano
Data Path: C:\...ents and Settings\Bioanalyzer\2012-05-29\2012-05-29_003.xad

Created: 5/29/2012 3:19:51 PM
Modified: 5/29/2012 3:44:35 PM

Electropherogram Summary Continued ...



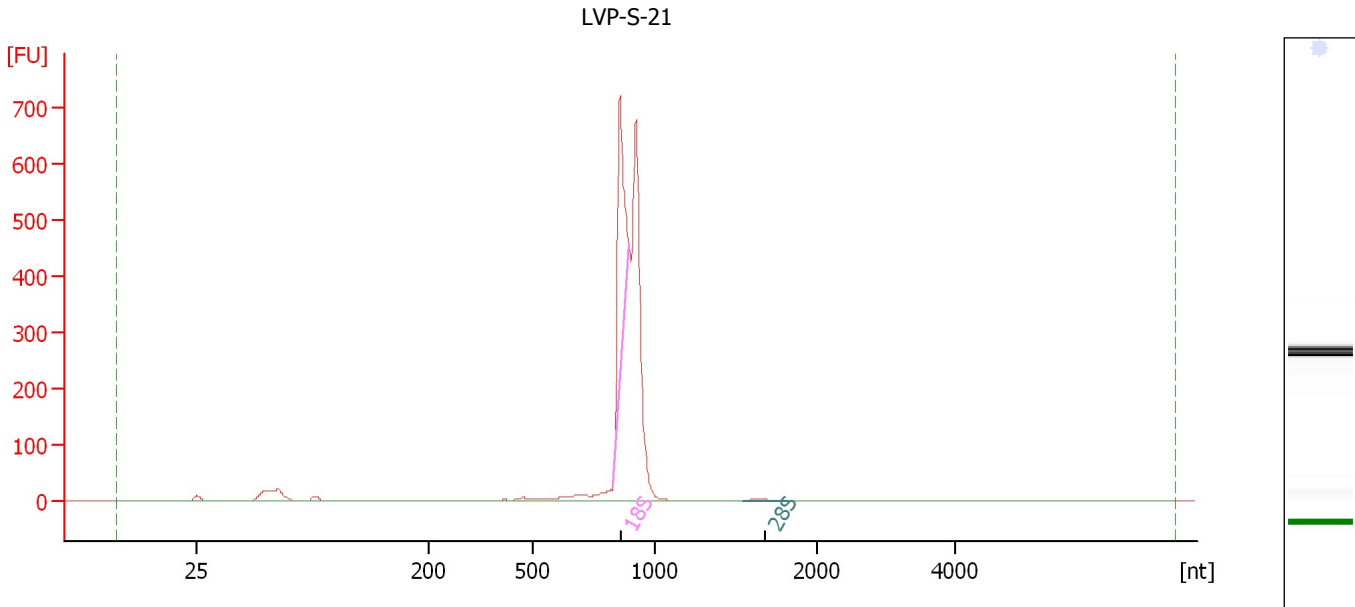
Overall Results for sample 8 : LVP-S-20

RNA Area:	214.9	RNA Integrity Number (RIN):	2.6 (B.02.08)
RNA Concentration:	366 ng/μl	Result Flagging Color:	
rRNA Ratio [28s / 18s]:	0.0	Result Flagging Label:	RIN: 2.60

Assay Class: Eukaryote Total RNA Nano
 Data Path: C:\...ents and Settings\Bioanalyzer\2012-05-29\2012-05-29_003.xad

Created: 5/29/2012 3:19:51 PM
 Modified: 5/29/2012 3:44:35 PM

Electropherogram Summary Continued ...



Overall Results for sample 9 : LVP-S-21

RNA Area:	1,843.1	RNA Integrity Number (RIN):	7.3 (B.02.08, Anomaly Threshold(s) manually adapted)
RNA Concentration:	3,135 ng/μl	Result Flagging Color:	
rRNA Ratio [28s / 18s]:	0.0	Result Flagging Label:	RIN: 7.30

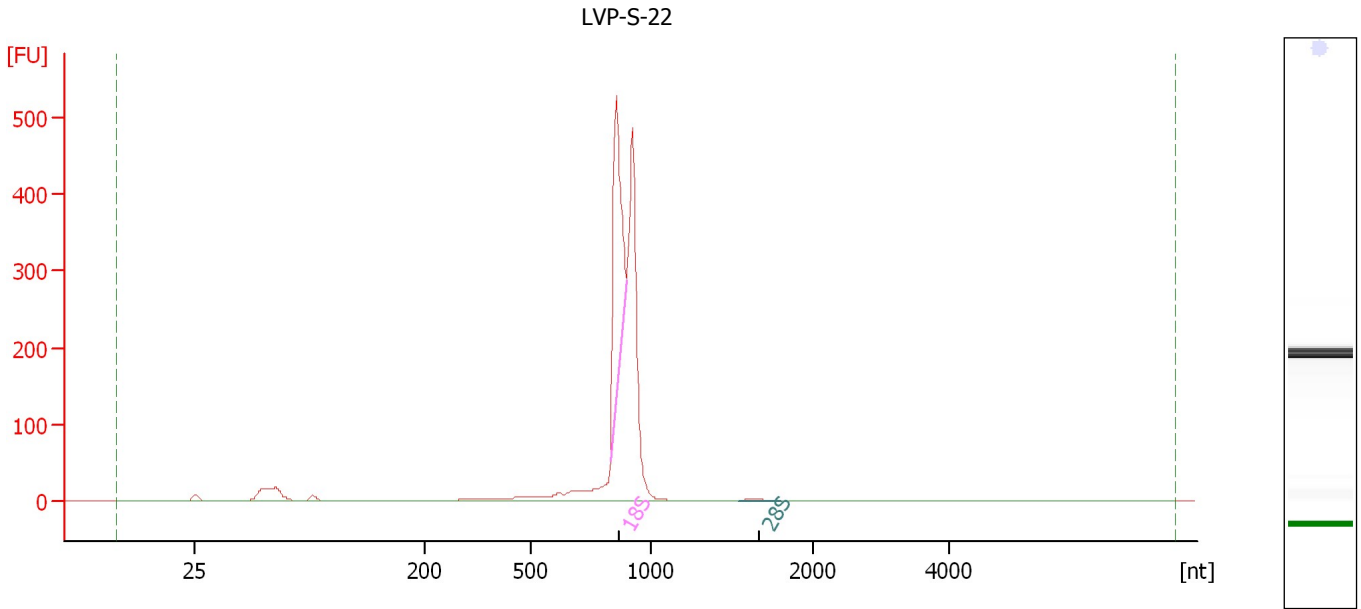
Fragment table for sample 9 : LVP-S-21

Name	Start Size [nt]	End Size [nt]	Area	% of total Area
18S	829	890	410.2	22.3
28S	1,536	1,821	7.6	0.4

Assay Class: Eukaryote Total RNA Nano
 Data Path: C:\...ents and Settings\Bioanalyzer\2012-05-29\2012-05-29_003.xad

Created: 5/29/2012 3:19:51 PM
 Modified: 5/29/2012 3:44:35 PM

Electropherogram Summary Continued ...



Overall Results for sample 10 : LVP-S-22

RNA Area:	1,416.9	RNA Integrity Number (RIN):	7.4 (B.02.08, Anomaly Threshold(s) manually adapted)
RNA Concentration:	2,410 ng/μl	Result Flagging Color:	
rRNA Ratio [28s / 18s]:	0.0	Result Flagging Label:	RIN: 7.40

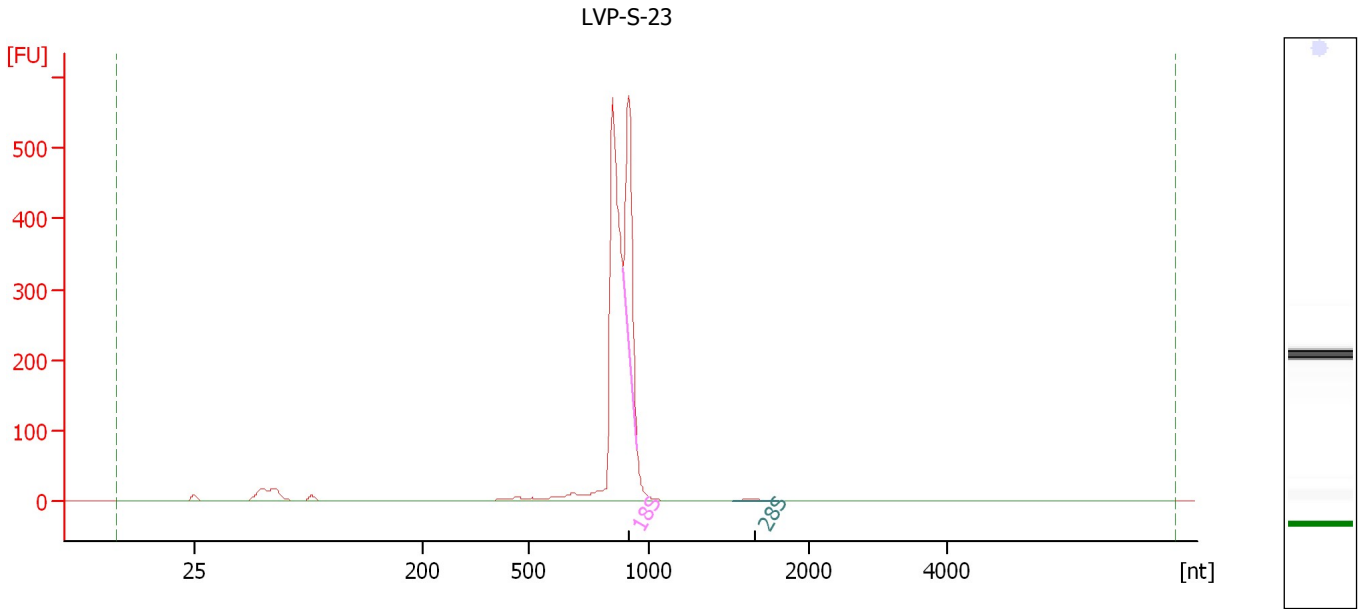
Fragment table for sample 10 : LVP-S-22

Name	Start Size [nt]	End Size [nt]	Area	% of total Area
18S	832	898	345.7	24.4
28S	1,544	1,803	4.9	0.3

Assay Class: Eukaryote Total RNA Nano
Data Path: C:\...ents and Settings\Bioanalyzer\2012-05-29\2012-05-29_003.xad

Created: 5/29/2012 3:19:51 PM
Modified: 5/29/2012 3:44:35 PM

Electropherogram Summary Continued ...



Overall Results for sample 11 : LVP-S-23

RNA Area:	1,471.9	RNA Integrity Number (RIN):	5.5 (B.02.08, Anomaly Threshold(s) manually adapted)
RNA Concentration:	2,504 ng/μl	Result Flagging Color:	
rRNA Ratio [28s / 18s]:	0.0	Result Flagging Label:	RIN: 5.50

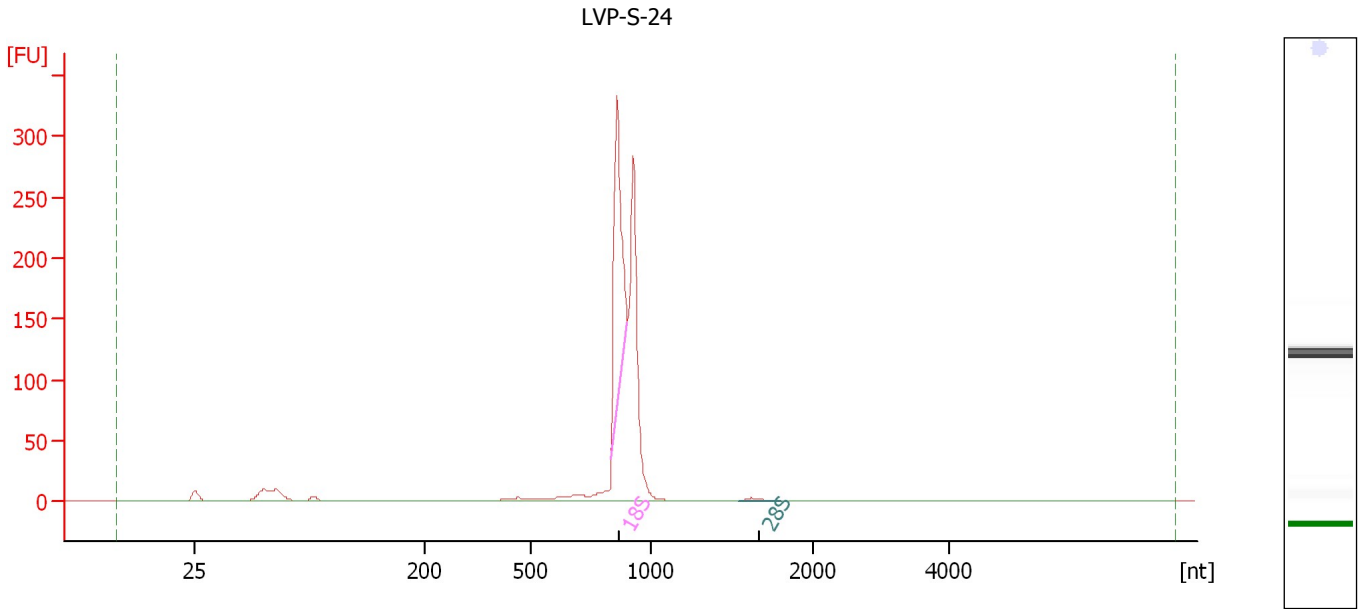
Fragment table for sample 11 : LVP-S-23

Name	Start Size [nt]	End Size [nt]	Area	% of total Area
18S	893	950	231.2	15.7
28S	1,525	1,811	6.1	0.4

Assay Class: Eukaryote Total RNA Nano
Data Path: C:\...ents and Settings\Bioanalyzer\2012-05-29\2012-05-29_003.xad

Created: 5/29/2012 3:19:51 PM
Modified: 5/29/2012 3:44:35 PM

Electropherogram Summary Continued ...



Overall Results for sample 12 : LVP-S-24

RNA Area: 778.7 RNA Integrity Number (RIN): 8.1 (B.02.08, Anomaly Threshold(s) manually adapted)
RNA Concentration: 1,325 ng/μl
rRNA Ratio [28s / 18s]: 0.0
Result Flagging Color:
Result Flagging Label: RIN: 8.10

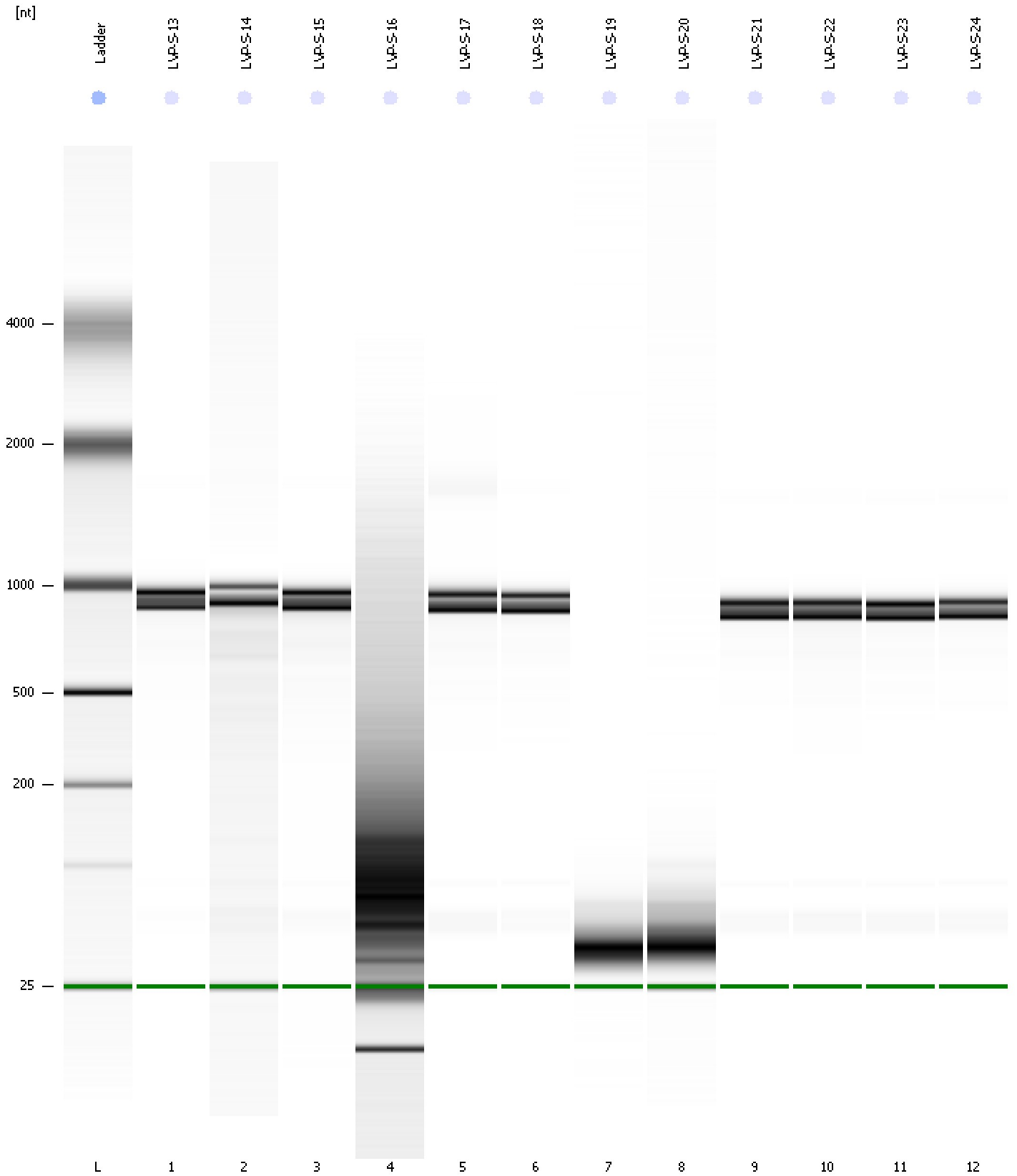
Fragment table for sample 12 : LVP-S-24

Name	Start Size [nt]	End Size [nt]	Area	% of total Area
18S	836	902	222.4	28.6
28S	1,544	1,810	3.5	0.5

Assay Class: Eukaryote Total RNA Nano
Data Path: C:\...ents and Settings\Bioanalyzer\2012-05-29\2012-05-29_003.xad

Created: 5/29/2012 3:19:51 PM
Modified: 5/29/2012 3:44:35 PM

Gel Image



Assay Class: Eukaryote Total RNA Nano
 Data Path: C:\...ents and Settings\Bioanalyzer\2012-05-29\2012-05-29_003.xad

Created: 5/29/2012 3:19:51 PM
 Modified: 5/29/2012 3:44:35 PM

Run Logbook

Description	Number	Source	Category	Sub Category	Time	Time Zone	User	Host
Run ended on port 1 (Number of wells acquired: 13)		Instrument	Run		5/29/2012 3:43:41 PM	(GMT --07:00) Pacific Standard Time	UC Davis	D8XSMGH1
Run started on port 1 (File: C:\Documents and Settings\Bioanalyzer\2012-05-29\2012-05-29_003.xad)		Instrument	Run		5/29/2012 3:19:57 PM	(GMT --07:00) Pacific Standard Time	UC Davis	D8XSMGH1
Product Number : G2938B		Instrument	Run		5/29/2012 3:19:57 PM	(GMT --07:00) Pacific Standard Time	UC Davis	D8XSMGH1
Name :		Instrument	Run		5/29/2012 3:19:57 PM	(GMT --07:00) Pacific Standard Time	UC Davis	D8XSMGH1
Vendor : Agilent Technologies		Instrument	Run		5/29/2012 3:19:57 PM	(GMT --07:00) Pacific Standard Time	UC Davis	D8XSMGH1
Serial# : DE13701086		Instrument	Run		5/29/2012 3:19:57 PM	(GMT --07:00) Pacific Standard Time	UC Davis	D8XSMGH1
Firmware : C.01.069		Instrument	Run		5/29/2012 3:19:57 PM	(GMT --07:00) Pacific Standard Time	UC Davis	D8XSMGH1
Cartridge : Electrode		Instrument	Run		5/29/2012 3:19:57 PM	(GMT --07:00) Pacific Standard Time	UC Davis	D8XSMGH1