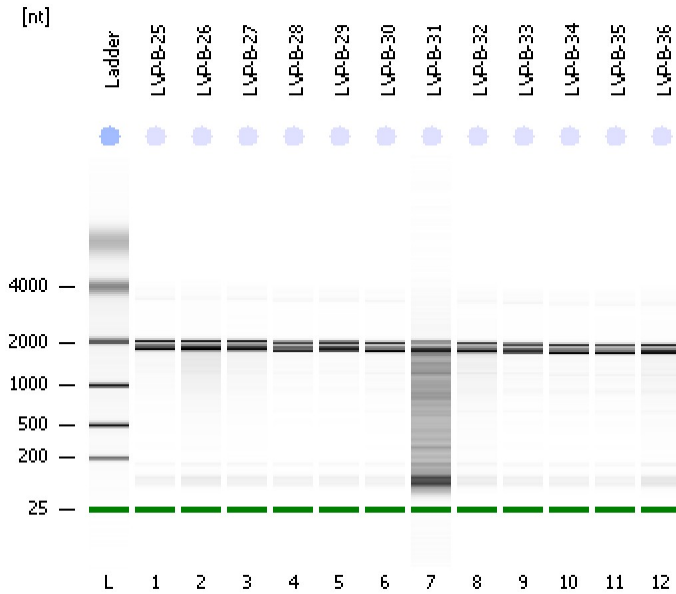


Assay Class: Eukaryote Total RNA Nano
Data Path: C:\...ents and Settings\Bioanalyzer\2012-05-30\2012-05-30_002.xad

Created: 5/30/2012 10:42:45 AM
Modified: 5/30/2012 11:07:36 AM

Electrophoresis File Run Summary



Instrument Information:

Instrument Name: DE13701086 Firmware: C.01.069
Serial#: DE13701086 Type: G2938B

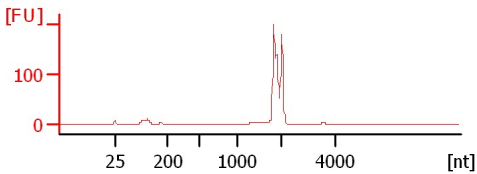
Assay Information:

Assay Origin Path: C:\Program Files\Agilent\2100 bioanalyzer\2100 expert\assays\RNA\Eukaryote Total RNA Nano Series II.xsy
Assay Class: Eukaryote Total RNA Nano
Version: 2.6
Assay Comments: Total RNA Analysis ng sensitivity (Eukaryote)
© Copyright 2003 - 2009 Agilent Technologies, Inc.

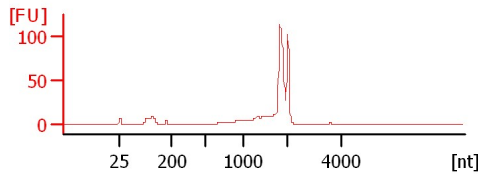
Chip Information:

Chip Lot #:
Reagent Kit Lot #:
Chip Comments:

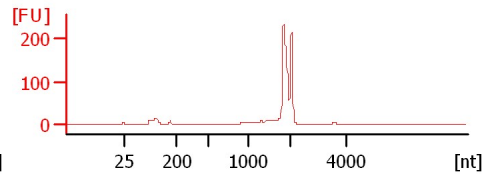
LVP-B-25
RIN: 8.20



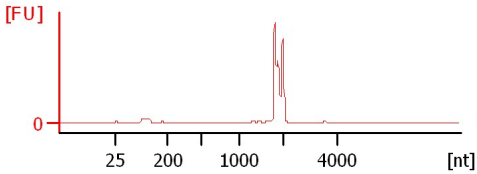
LVP-B-26
RIN: 6.90



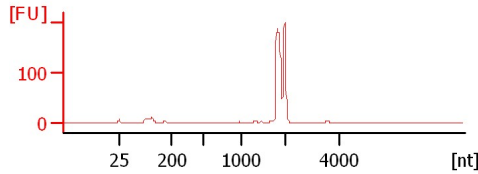
LVP-B-27
RIN: 7.70



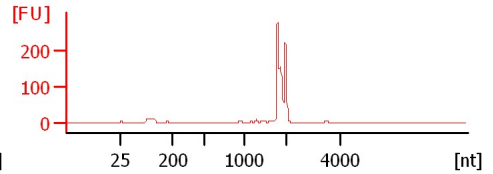
LVP-B-28
RIN: 8.30



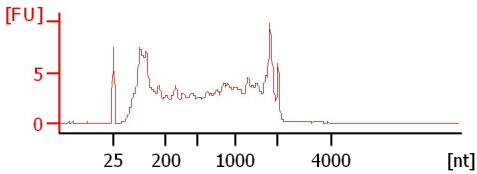
LVP-B-29
RIN: 5.40



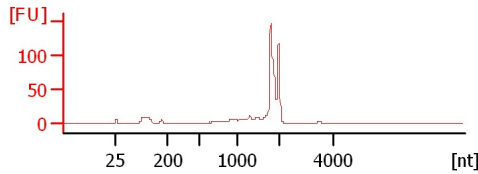
LVP-B-30
RIN: 8.20



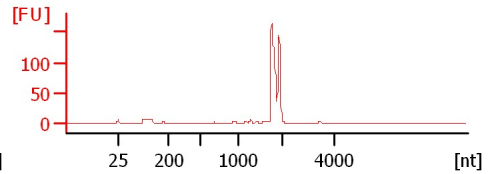
LVP-B-31
RIN: 4.30



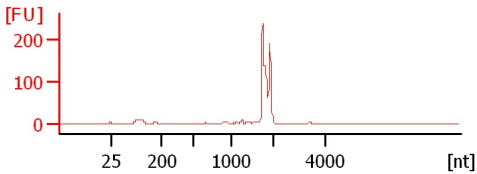
LVP-B-32
RIN: 6.80



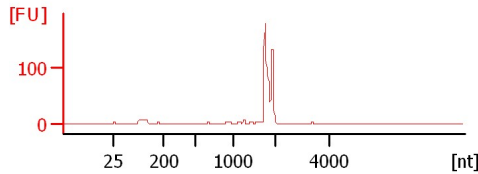
LVP-B-33
RIN: 8.30



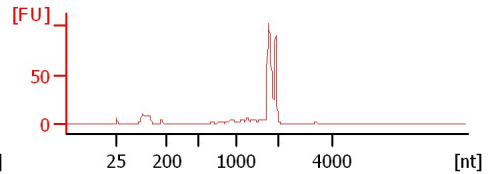
LVP-B-34
RIN: 7.90



LVP-B-35
RIN: 8



LVP-B-36
RIN: 7.30



Assay Class: Eukaryote Total RNA Nano
 Data Path: C:\...ents and Settings\Bioanalyzer\2012-05-30\2012-05-30_002.xad

Created: 5/30/2012 10:42:45 AM
 Modified: 5/30/2012 11:07:36 AM

Electrophoresis File Run Summary (Chip Summary)

Sample Name	Sample Comment	Status	Result Label	Result Color
LVP-B-25		✓	RIN: 8.20	
LVP-B-26		✓	RIN: 6.90	
LVP-B-27		✓	RIN: 7.70	
LVP-B-28		✓	RIN: 8.30	
LVP-B-29		✓	RIN: 5.40	
LVP-B-30		✓	RIN: 8.20	
LVP-B-31		✓	RIN: 4.30	
LVP-B-32		✓	RIN: 6.80	
LVP-B-33		✓	RIN: 8.30	
LVP-B-34		✓	RIN: 7.90	
LVP-B-35		✓	RIN:8	
LVP-B-36		✓	RIN: 7.30	
Ladder		✓	All Other Samples	

Chip Lot #

Reagent Kit Lot #

Chip Comments :

Assay Class: Eukaryote Total RNA Nano
Data Path: C:\...ents and Settings\Bioanalyzer\2012-05-30\2012-05-30_002.xad

Created: 5/30/2012 10:42:45 AM
Modified: 5/30/2012 11:07:36 AM

Electrophoresis Assay Details

General Analysis Settings

Number of Available Sample and Ladder Wells (Max.) : 13
Minimum Visible Range [s] : 17
Maximum Visible Range [s] : 70
Start Analysis Time Range [s] : 19
End Analysis Time Range [s] : 69
Ladder Concentration [ng/μl] : 150
Lower Marker Concentration [ng/μl] : 0
Upper Marker Concentration [ng/μl] : 0
Used Lower Marker for Quantitation
Standard Curve Fit is Logarithmic
Show Data Aligned to Lower Marker

Integrator Settings

Integration Start Time [s] : 19
Integration End Time [s] : 69
Slope Threshold : 0.6
Height Threshold [FU] : 0.5
Area Threshold : 0.2
Width Threshold [s] : 0.5
Baseline Plateau [s] : 6

Filter Settings

Filter Width [s] : 0.5
Polynomial Order : 4

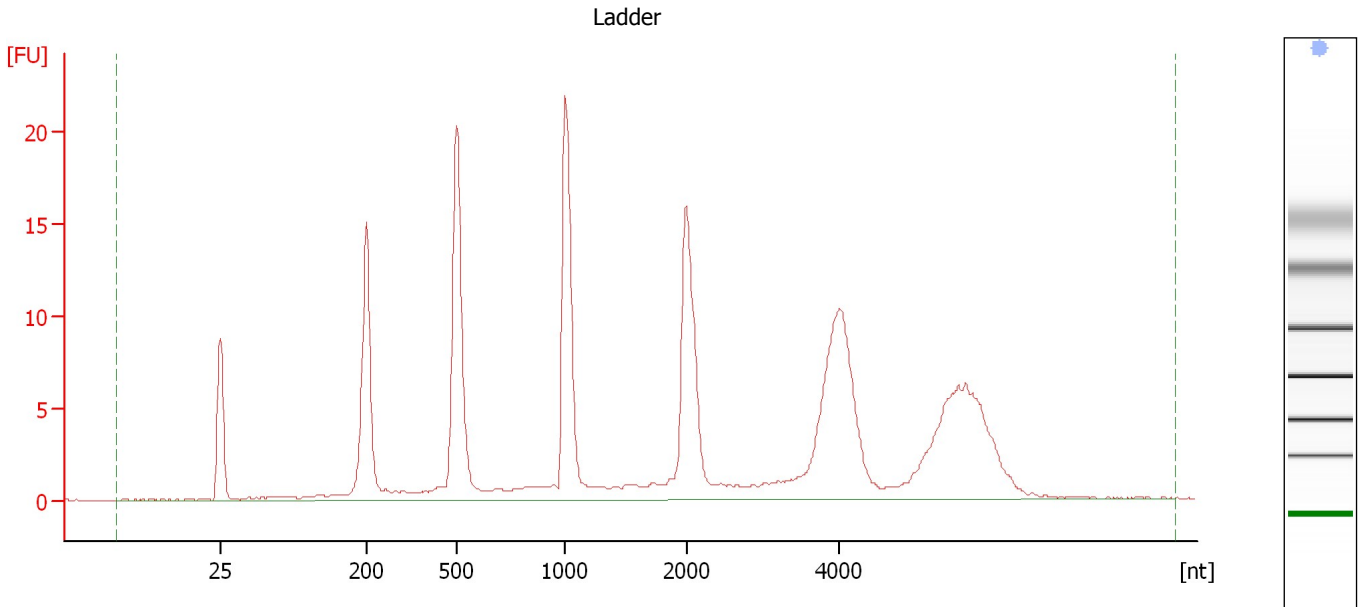
Ladder

Ladder Peak	Size
1	25
2	200
3	500
4	1000
5	2000
6	4000

Assay Class: Eukaryote Total RNA Nano
Data Path: C:\...ents and Settings\Bioanalyzer\2012-05-30\2012-05-30_002.xad

Created: 5/30/2012 10:42:45 AM
Modified: 5/30/2012 11:07:36 AM

Electropherogram Summary



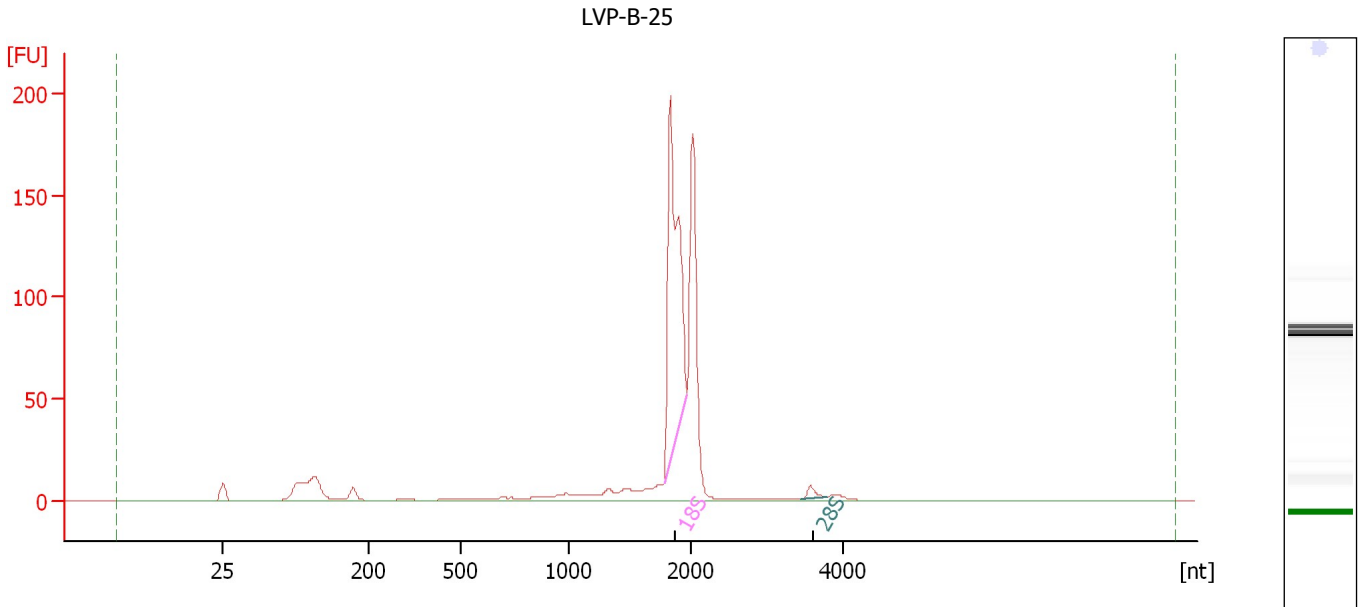
Overall Results for Ladder

RNA Area:	195.1	Result Flagging Color:	
RNA Concentration:	150 ng/ μ l	Result Flagging Label:	All Other Samples

Assay Class: Eukaryote Total RNA Nano
 Data Path: C:\...ents and Settings\Bioanalyzer\2012-05-30\2012-05-30_002.xad

Created: 5/30/2012 10:42:45 AM
 Modified: 5/30/2012 11:07:36 AM

Electropherogram Summary Continued ...



Overall Results for sample 1 : LVP-B-25

RNA Area:	589.0	RNA Integrity Number (RIN):	8.2 (B.02.08, Anomaly Threshold(s) manually adapted)
RNA Concentration:	453 ng/μl	Result Flagging Color:	
rRNA Ratio [28s / 18s]:	0.0	Result Flagging Label:	RIN: 8.20

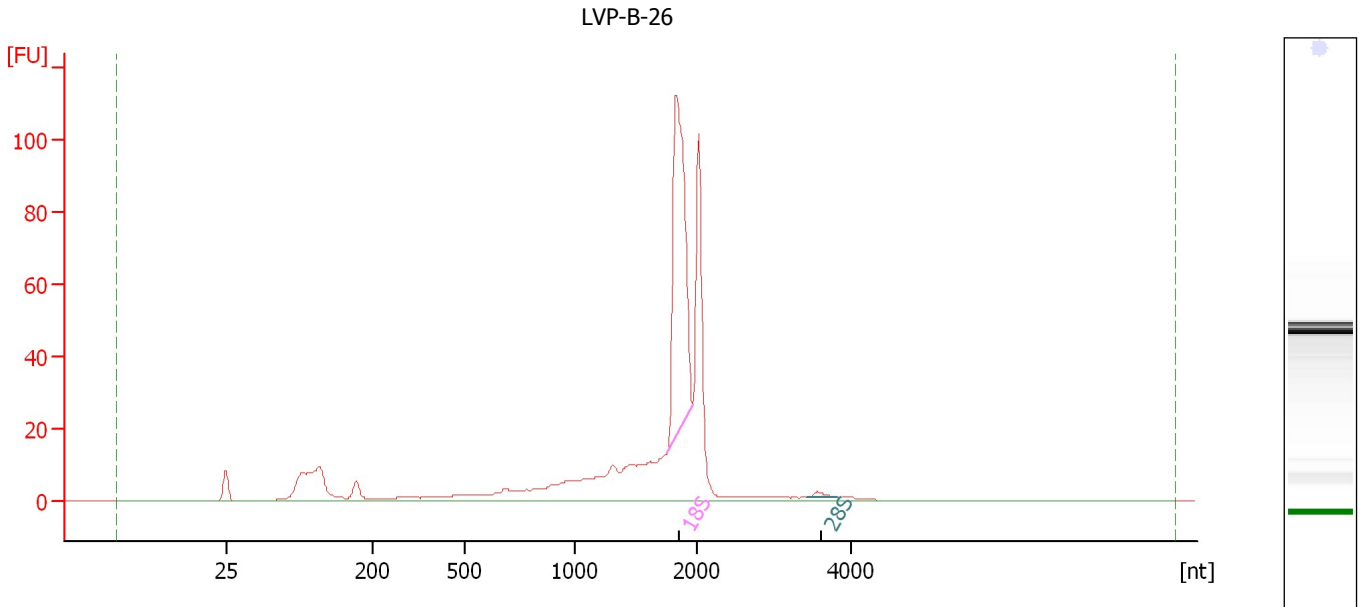
Fragment table for sample 1 : LVP-B-25

Name	Start Size [nt]	End Size [nt]	Area	% of total Area
18S	1,781	1,975	207.7	35.3
28S	3,451	3,771	4.9	0.8

Assay Class: Eukaryote Total RNA Nano
Data Path: C:\...ents and Settings\Bioanalyzer\2012-05-30\2012-05-30_002.xad

Created: 5/30/2012 10:42:45 AM
Modified: 5/30/2012 11:07:36 AM

Electropherogram Summary Continued ...



Overall Results for sample 2 : LVP-B-26

RNA Area:	479.8	RNA Integrity Number (RIN):	6.9 (B.02.08, Anomaly Threshold(s) manually adapted)
RNA Concentration:	369 ng/μl	Result Flagging Color:	
rRNA Ratio [28s / 18s]:	0.0	Result Flagging Label:	RIN: 6.90

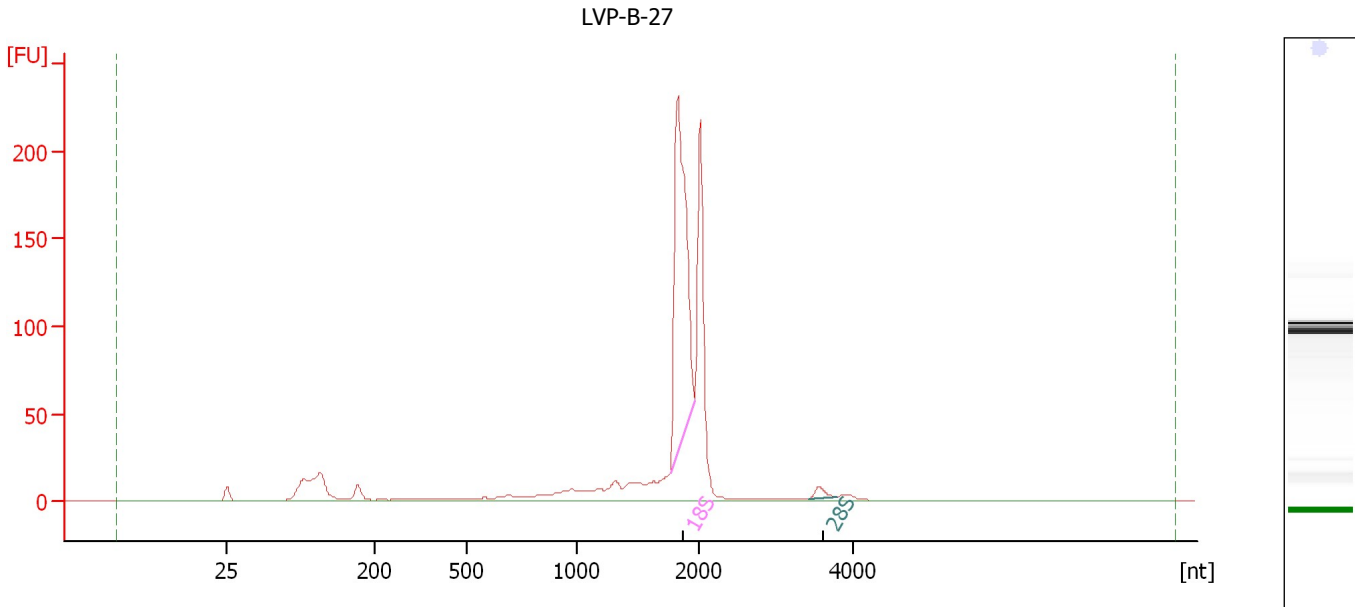
Fragment table for sample 2 : LVP-B-26

Name	Start Size [nt]	End Size [nt]	Area	% of total Area
18S	1,759	1,969	128.4	26.8
28S	3,433	3,806	1.7	0.4

Assay Class: Eukaryote Total RNA Nano
 Data Path: C:\...ents and Settings\Bioanalyzer\2012-05-30\2012-05-30_002.xad

Created: 5/30/2012 10:42:45 AM
 Modified: 5/30/2012 11:07:36 AM

Electropherogram Summary Continued ...



Overall Results for sample 3 : LVP-B-27

RNA Area:	792.7	RNA Integrity Number (RIN):	7.7 (B.02.08, Anomaly Threshold(s) manually adapted)
RNA Concentration:	609 ng/μl	Result Flagging Color:	
rRNA Ratio [28s / 18s]:	0.0	Result Flagging Label:	RIN: 7.70

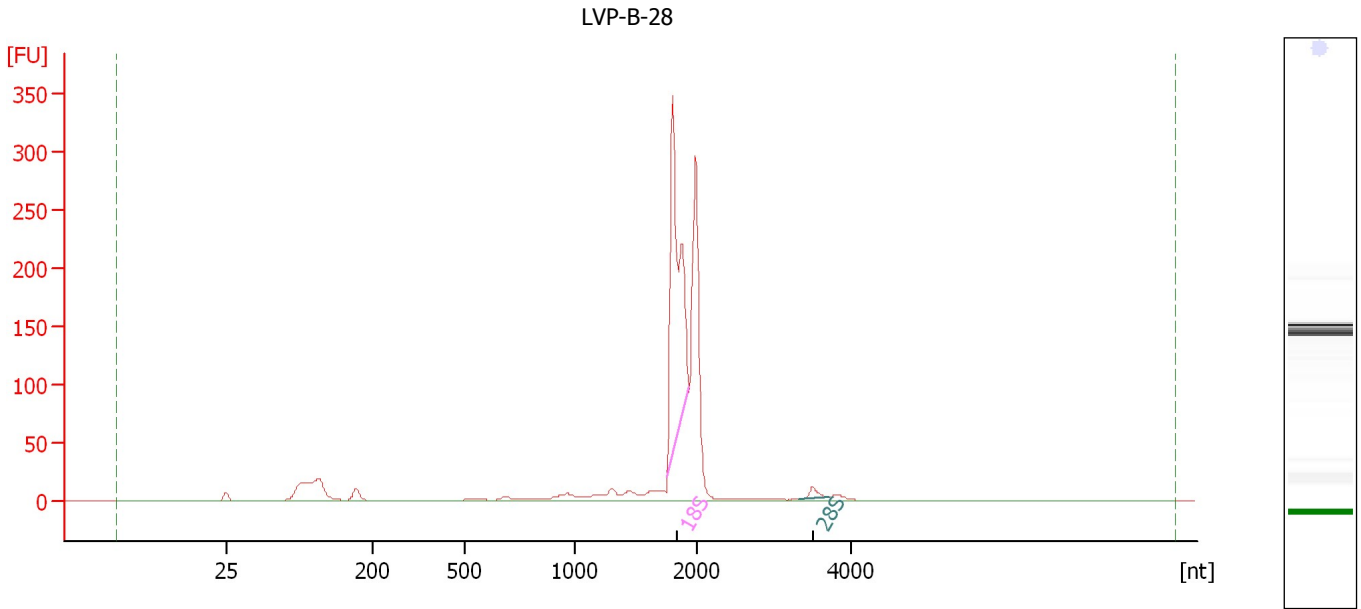
Fragment table for sample 3 : LVP-B-27

Name	Start Size [nt]	End Size [nt]	Area	% of total Area
18S	1,769	1,961	260.8	32.9
28S	3,431	3,777	5.8	0.7

Assay Class: Eukaryote Total RNA Nano
 Data Path: C:\...ents and Settings\Bioanalyzer\2012-05-30\2012-05-30_002.xad

Created: 5/30/2012 10:42:45 AM
 Modified: 5/30/2012 11:07:36 AM

Electropherogram Summary Continued ...



Overall Results for sample 4 : LVP-B-28

RNA Area:	950.3	RNA Integrity Number (RIN):	8.3 (B.02.08, Anomaly Threshold(s) manually adapted)
RNA Concentration:	731 ng/μl	Result Flagging Color:	
rRNA Ratio [28s / 18s]:	0.0	Result Flagging Label:	RIN: 8.30

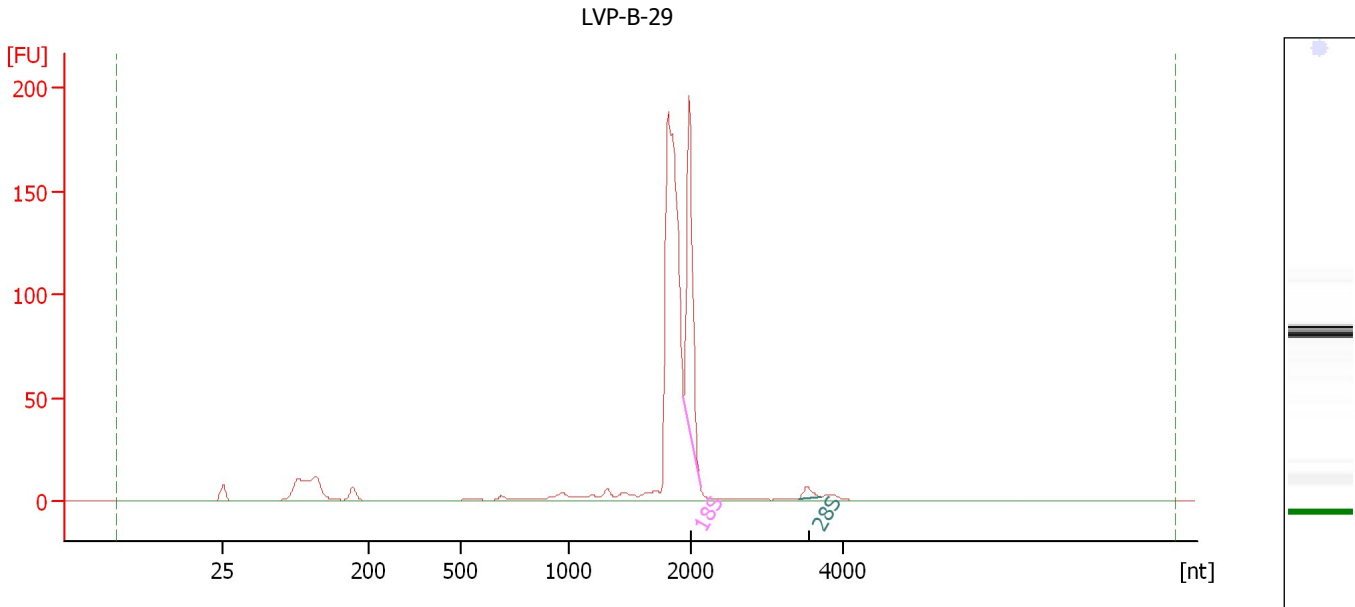
Fragment table for sample 4 : LVP-B-28

Name	Start Size [nt]	End Size [nt]	Area	% of total Area
18S	1,759	1,934	319.7	33.6
28S	3,322	3,710	8.3	0.9

Assay Class: Eukaryote Total RNA Nano
 Data Path: C:\...ents and Settings\Bioanalyzer\2012-05-30\2012-05-30_002.xad

Created: 5/30/2012 10:42:45 AM
 Modified: 5/30/2012 11:07:36 AM

Electropherogram Summary Continued ...



Overall Results for sample 5 : LVP-B-29

RNA Area:	582.8	RNA Integrity Number (RIN):	5.4 (B.02.08, Anomaly Threshold(s) manually adapted)
RNA Concentration:	448 ng/μl	Result Flagging Color:	
rRNA Ratio [28s / 18s]:	0.0	Result Flagging Label:	RIN: 5.40

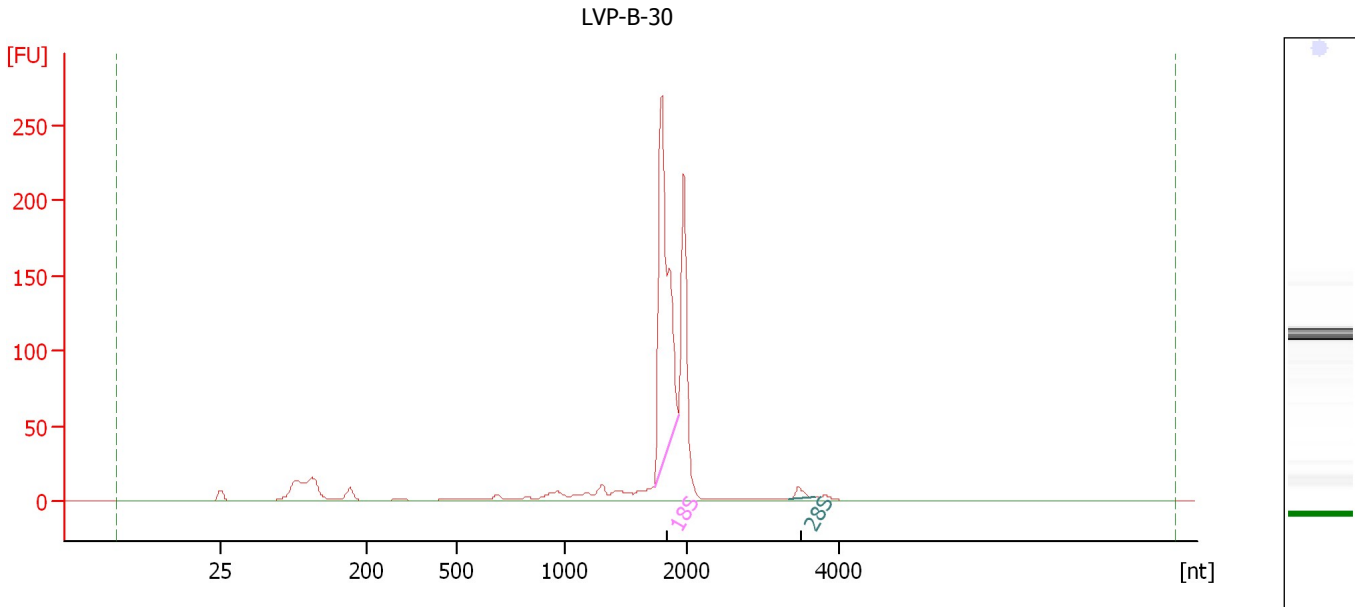
Fragment table for sample 5 : LVP-B-29

Name	Start Size [nt]	End Size [nt]	Area	% of total Area
18S	1,940	2,128	103.3	17.7
28S	3,409	3,702	4.7	0.8

Assay Class: Eukaryote Total RNA Nano
 Data Path: C:\...ents and Settings\Bioanalyzer\2012-05-30\2012-05-30_002.xad

Created: 5/30/2012 10:42:45 AM
 Modified: 5/30/2012 11:07:36 AM

Electropherogram Summary Continued ...



Overall Results for sample 6 : LVP-B-30

RNA Area:	742.8	RNA Integrity Number (RIN):	8.2 (B.02.08, Anomaly Threshold(s) manually adapted)
RNA Concentration:	571 ng/μl	Result Flagging Color:	
rRNA Ratio [28s / 18s]:	0.0	Result Flagging Label:	RIN: 8.20

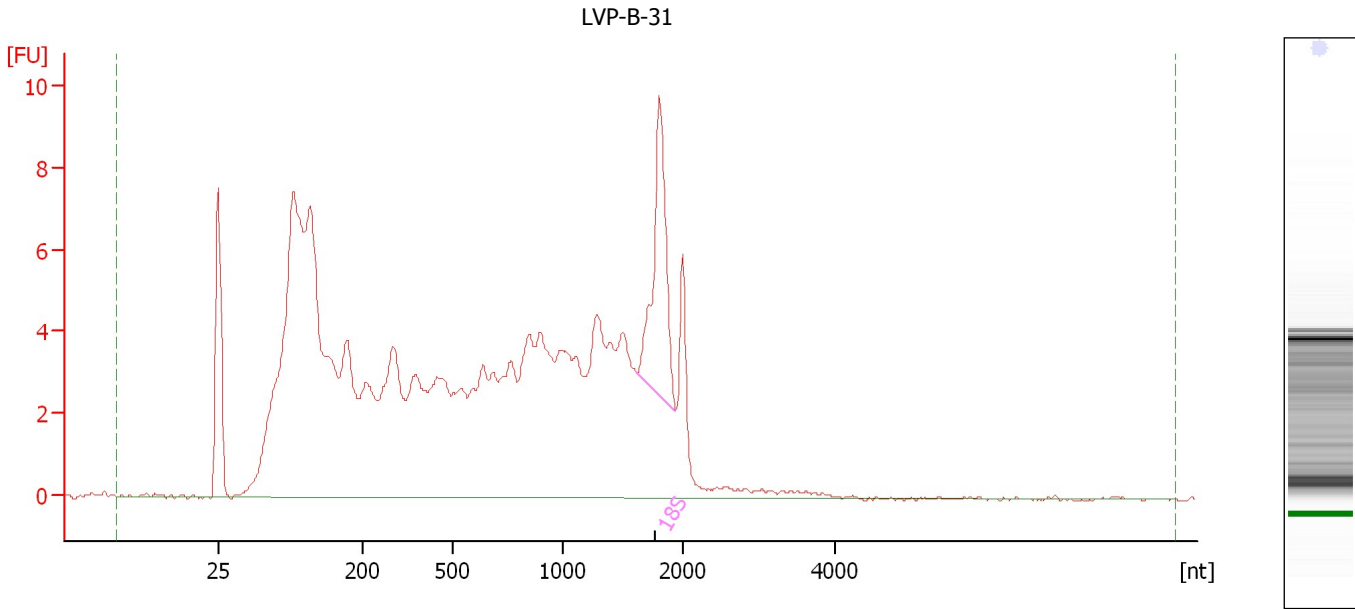
Fragment table for sample 6 : LVP-B-30

Name	Start Size [nt]	End Size [nt]	Area	% of total Area
18S	1,734	1,929	260.4	35.1
28S	3,342	3,678	6.5	0.9

Assay Class: Eukaryote Total RNA Nano
Data Path: C:\...ents and Settings\Bioanalyzer\2012-05-30\2012-05-30_002.xad

Created: 5/30/2012 10:42:45 AM
Modified: 5/30/2012 11:07:36 AM

Electropherogram Summary Continued ...



Overall Results for sample 7 : LVP-B-31

RNA Area:	206.5	RNA Integrity Number (RIN):	4.3 (B.02.08)
RNA Concentration:	159 ng/μl	Result Flagging Color:	
rRNA Ratio [28s / 18s]:	0.0	Result Flagging Label:	RIN: 4.30

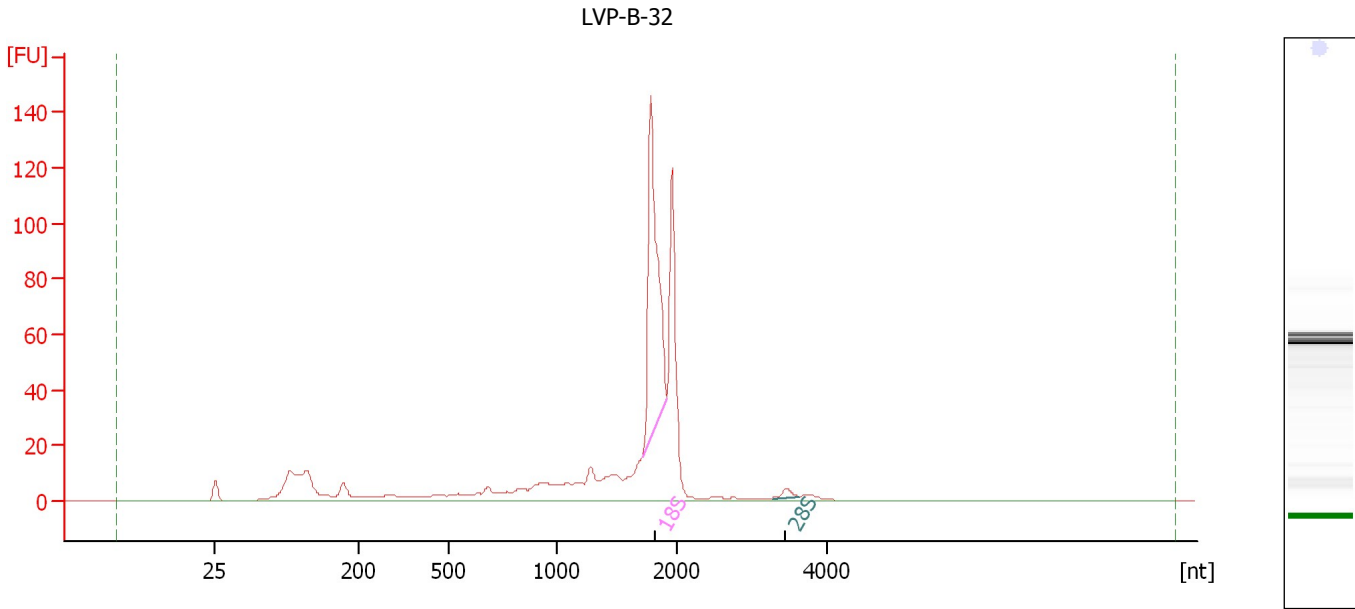
Fragment table for sample 7 : LVP-B-31

Name	Start Size [nt]	End Size [nt]	Area	% of total Area
18S	1,624	1,944	10.7	5.2

Assay Class: Eukaryote Total RNA Nano
Data Path: C:\...ents and Settings\Bioanalyzer\2012-05-30\2012-05-30_002.xad

Created: 5/30/2012 10:42:45 AM
Modified: 5/30/2012 11:07:36 AM

Electropherogram Summary Continued ...



Overall Results for sample 8 : LVP-B-32

RNA Area:	549.9	RNA Integrity Number (RIN):	6.8 (B.02.08, Anomaly Threshold(s) manually adapted)
RNA Concentration:	423 ng/μl	Result Flagging Color:	
rRNA Ratio [28s / 18s]:	0.0	Result Flagging Label:	RIN: 6.80

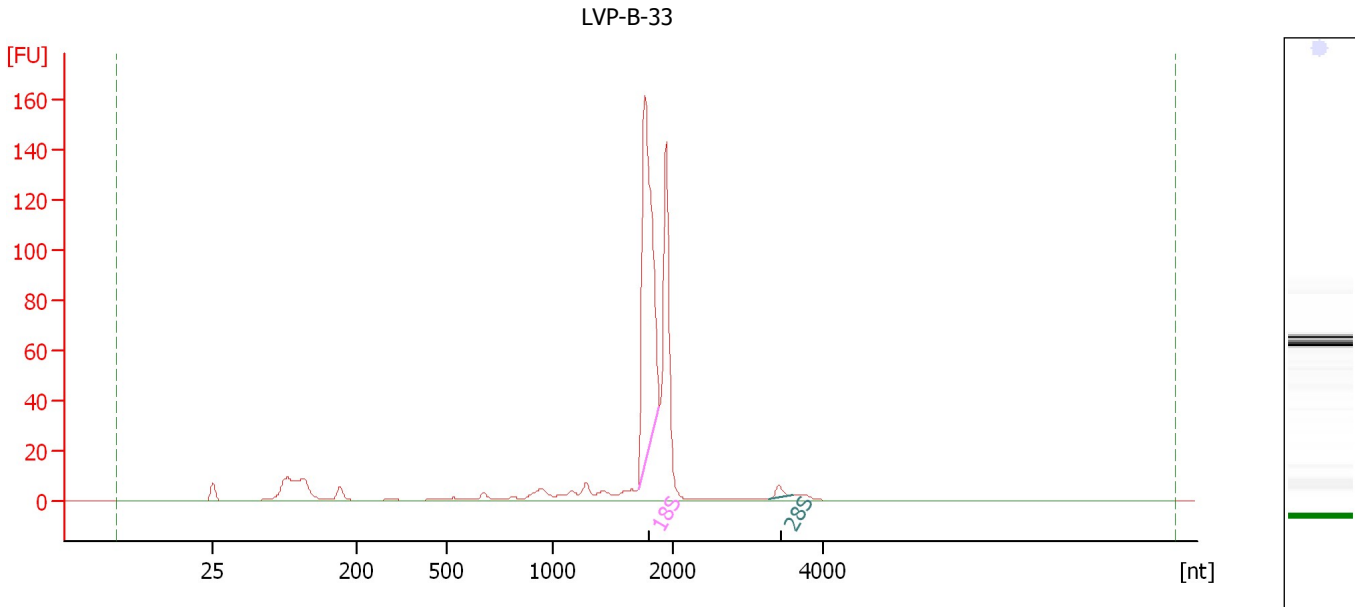
Fragment table for sample 8 : LVP-B-32

Name	Start Size [nt]	End Size [nt]	Area	% of total Area
18S	1,718	1,914	133.3	24.3
28S	3,264	3,631	2.8	0.5

Assay Class: Eukaryote Total RNA Nano
Data Path: C:\...ents and Settings\Bioanalyzer\2012-05-30\2012-05-30_002.xad

Created: 5/30/2012 10:42:45 AM
Modified: 5/30/2012 11:07:36 AM

Electropherogram Summary Continued ...



Overall Results for sample 9 : LVP-B-33

RNA Area: 468.9 RNA Integrity Number (RIN): 8.3 (B.02.08, Anomaly Threshold(s) manually adapted)
RNA Concentration: 360 ng/μl
rRNA Ratio [28s / 18s]: 0.0
Result Flagging Color:
Result Flagging Label: RIN: 8.30

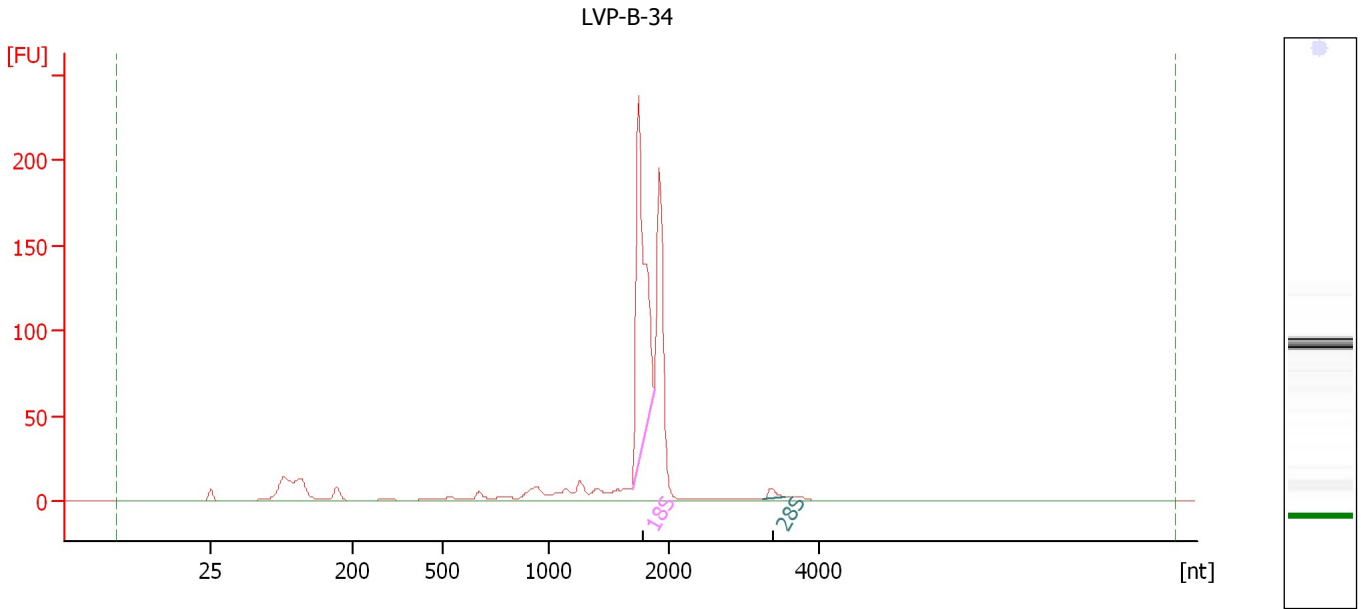
Fragment table for sample 9 : LVP-B-33

Name	Start Size [nt]	End Size [nt]	Area	% of total Area
18S	1,715	1,894	170.1	36.3
28S	3,295	3,607	4.1	0.9

Assay Class: Eukaryote Total RNA Nano
Data Path: C:\...ents and Settings\Bioanalyzer\2012-05-30\2012-05-30_002.xad

Created: 5/30/2012 10:42:45 AM
Modified: 5/30/2012 11:07:36 AM

Electropherogram Summary Continued ...



Overall Results for sample 10 : LVP-B-34

RNA Area: 681.9 RNA Integrity Number (RIN): 7.9 (B.02.08, Anomaly Threshold(s) manually adapted)
RNA Concentration: 524 ng/μl
rRNA Ratio [28s / 18s]: 0.0
Result Flagging Color:
Result Flagging Label: RIN: 7.90

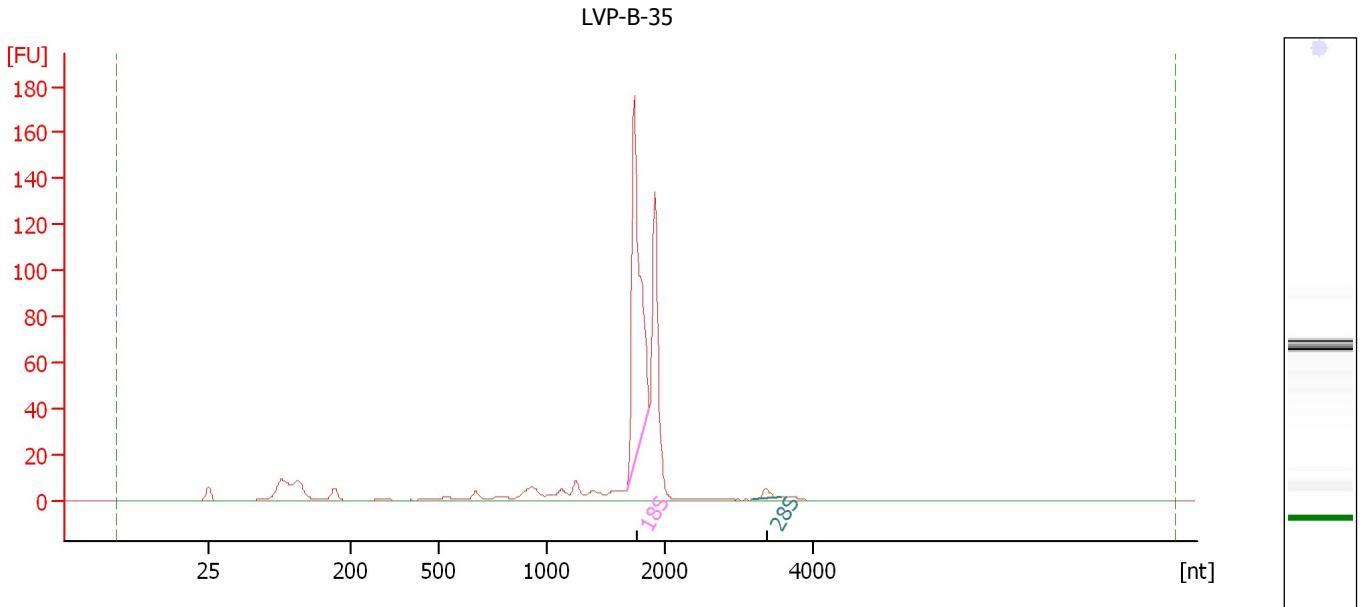
Fragment table for sample 10 : LVP-B-34

Name	Start Size [nt]	End Size [nt]	Area	% of total Area
18S	1,693	1,883	219.4	32.2
28S	3,269	3,568	5.0	0.7

Assay Class: Eukaryote Total RNA Nano
Data Path: C:\...ents and Settings\Bioanalyzer\2012-05-30\2012-05-30_002.xad

Created: 5/30/2012 10:42:45 AM
Modified: 5/30/2012 11:07:36 AM

Electropherogram Summary Continued ...



Overall Results for sample 11 : LVP-B-35

RNA Area:	470.2	RNA Integrity Number (RIN):	8 (B.02.08, Anomaly Threshold(s) manually adapted)
RNA Concentration:	361 ng/μl	Result Flagging Color:	
rRNA Ratio [28s / 18s]:	0.0	Result Flagging Label:	RIN:8

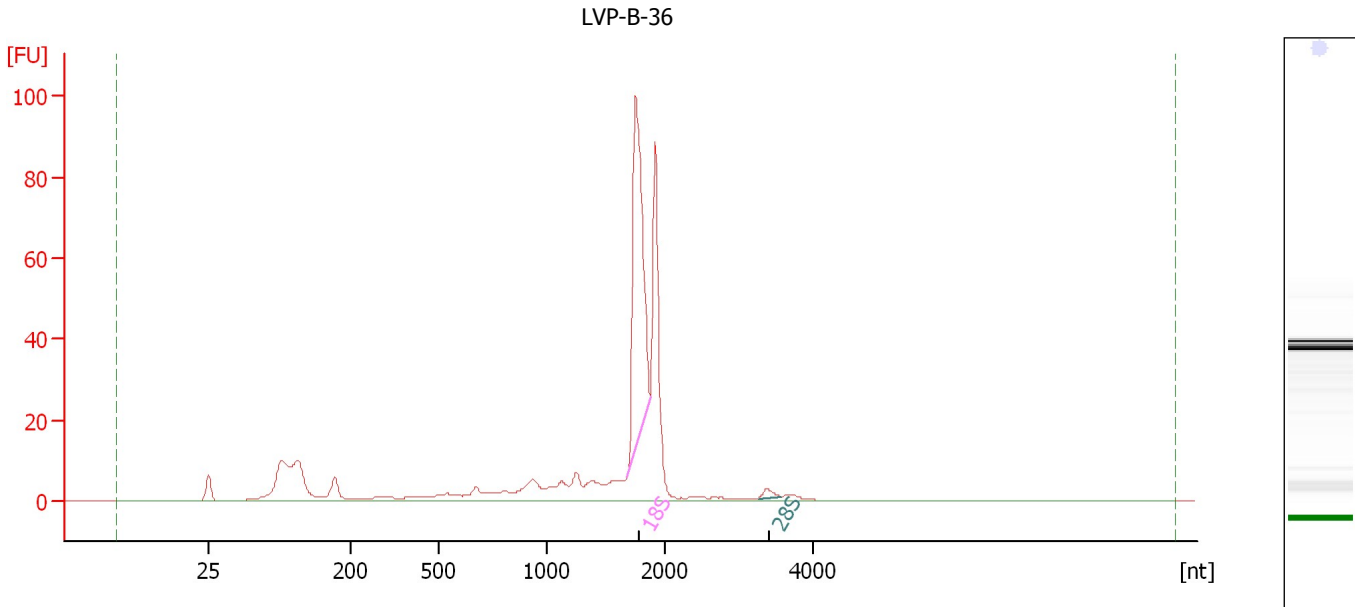
Fragment table for sample 11 : LVP-B-35

Name	Start Size [nt]	End Size [nt]	Area	% of total Area
18S	1,690	1,871	162.2	34.5
28S	3,185	3,557	3.8	0.8

Assay Class: Eukaryote Total RNA Nano
Data Path: C:\...ents and Settings\Bioanalyzer\2012-05-30\2012-05-30_002.xad

Created: 5/30/2012 10:42:45 AM
Modified: 5/30/2012 11:07:36 AM

Electropherogram Summary Continued ...



Overall Results for sample 12 : LVP-B-36

RNA Area: 377.6 RNA Integrity Number (RIN): 7.3 (B.02.08, Anomaly Threshold(s) manually adapted)
RNA Concentration: 290 ng/μl
rRNA Ratio [28s / 18s]: 0.0
Result Flagging Color:
Result Flagging Label: RIN: 7.30

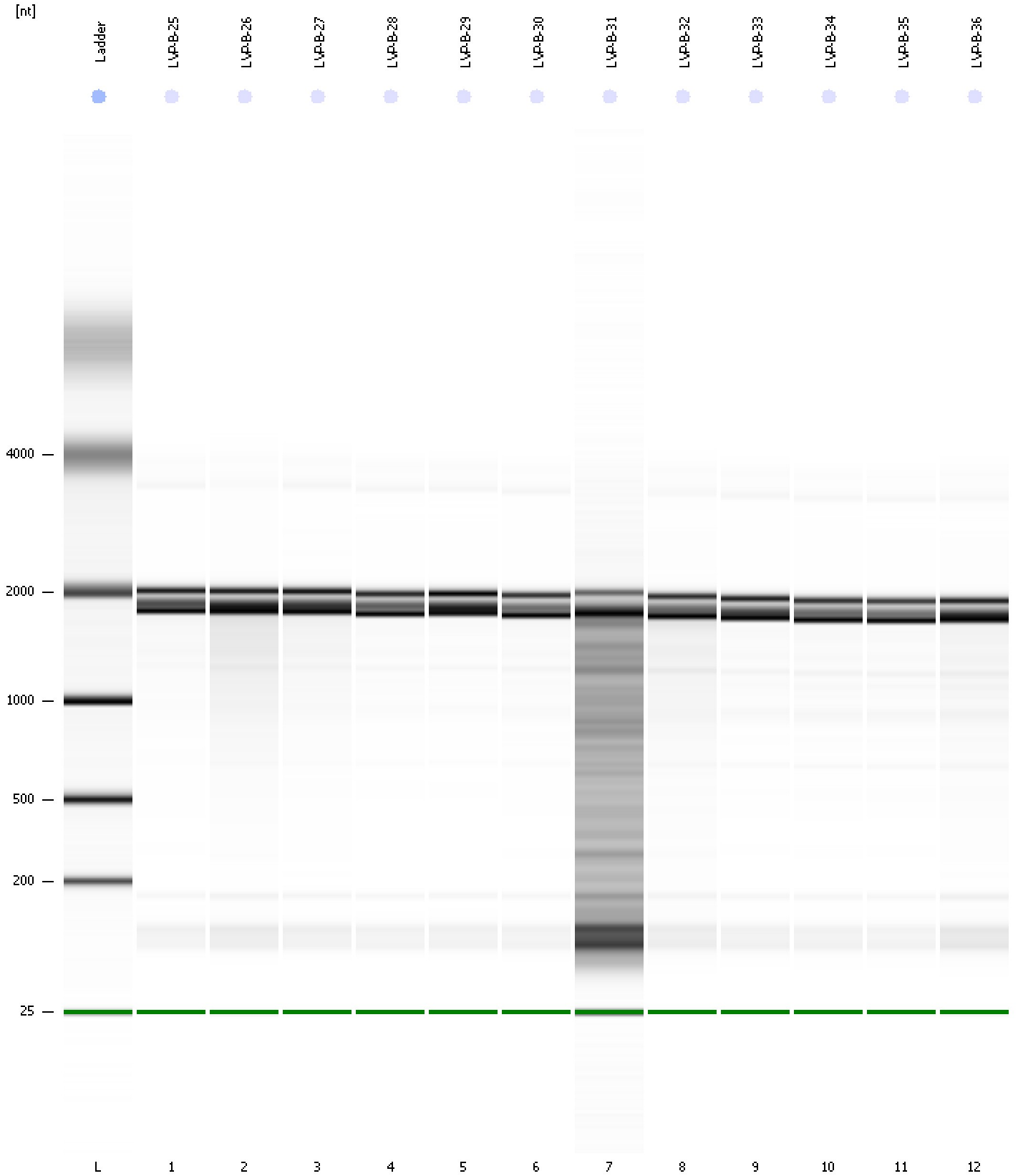
Fragment table for sample 12 : LVP-B-36

Name	Start Size [nt]	End Size [nt]	Area	% of total Area
18S	1,690	1,880	106.0	28.1
28S	3,257	3,571	2.2	0.6

Assay Class: Eukaryote Total RNA Nano
Data Path: C:\...ents and Settings\Bioanalyzer\2012-05-30\2012-05-30_002.xad

Created: 5/30/2012 10:42:45 AM
Modified: 5/30/2012 11:07:36 AM

Gel Image



Assay Class: Eukaryote Total RNA Nano
 Data Path: C:\...ents and Settings\Bioanalyzer\2012-05-30\2012-05-30_002.xad

Created: 5/30/2012 10:42:45 AM
 Modified: 5/30/2012 11:07:36 AM

Run Logbook

Description	Number	Source	Category	Sub Category	Time	Time Zone	User	Host
Run ended on port 1 (Number of wells acquired: 13)		Instrument	Run		5/30/2012 11:06:35 AM	(GMT --07:00) Pacific Standard Time	UC Davis	D8XSMGH1
Run started on port 1 (File: C:\Documents and Settings\Bioanalyzer\2012-05-30\2012-05-30_002.xad)		Instrument	Run		5/30/2012 10:42:50 AM	(GMT --07:00) Pacific Standard Time	UC Davis	D8XSMGH1
Product Number : G2938B		Instrument	Run		5/30/2012 10:42:50 AM	(GMT --07:00) Pacific Standard Time	UC Davis	D8XSMGH1
Name :		Instrument	Run		5/30/2012 10:42:50 AM	(GMT --07:00) Pacific Standard Time	UC Davis	D8XSMGH1
Vendor : Agilent Technologies		Instrument	Run		5/30/2012 10:42:50 AM	(GMT --07:00) Pacific Standard Time	UC Davis	D8XSMGH1
Serial# : DE13701086		Instrument	Run		5/30/2012 10:42:50 AM	(GMT --07:00) Pacific Standard Time	UC Davis	D8XSMGH1
Firmware : C.01.069		Instrument	Run		5/30/2012 10:42:50 AM	(GMT --07:00) Pacific Standard Time	UC Davis	D8XSMGH1
Cartridge : Electrode		Instrument	Run		5/30/2012 10:42:50 AM	(GMT --07:00) Pacific Standard Time	UC Davis	D8XSMGH1