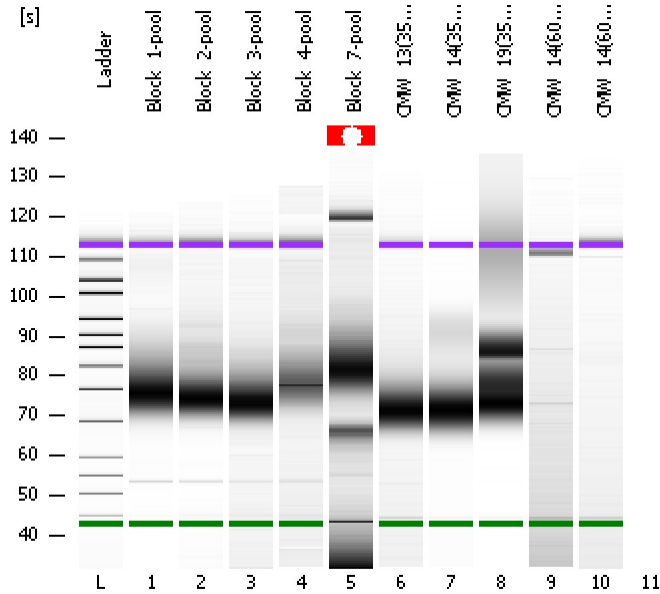


Assay Class: High Sensitivity DNA Assay
 Data Path: C:\...ents and Settings\Bioanalyzer\2012-05-30\2012-05-30_004.xad

Created: 5/30/2012 3:38:06 PM
 Modified: 5/30/2012 4:16:37 PM

Electrophoresis File Run Summary



Instrument Information:

Instrument Name: DE13701086 Firmware: C.01.069
 Serial#: DE13701086 Type: G2938B

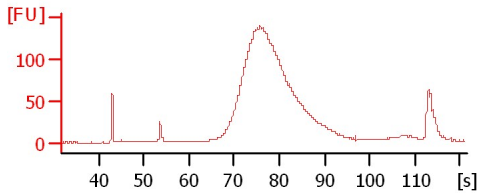
Assay Information:

Assay Origin Path: C:\Program Files\Agilent\2100 bioanalyzer\2100 expert\assays\dsDNA\High Sensitivity DNA.xsy
 Assay Class: High Sensitivity DNA Assay
 Version: 1.03
 Assay Comments: Copyright © 2003-2010 Agilent Technologies

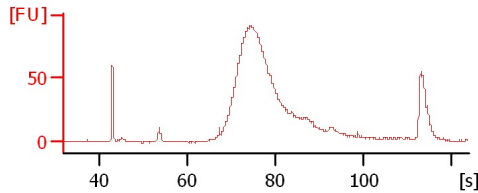
Chip Information:

Chip Lot #: Reagent Kit Lot #: Chip Comments:

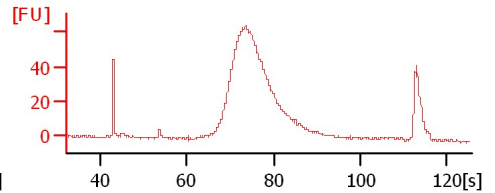
Block_1-pool



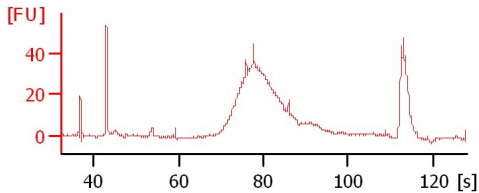
Block_2-pool



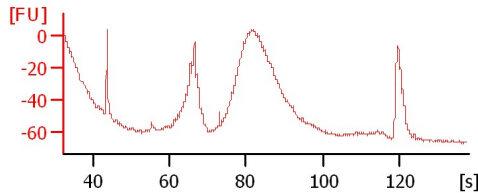
Block_3-pool



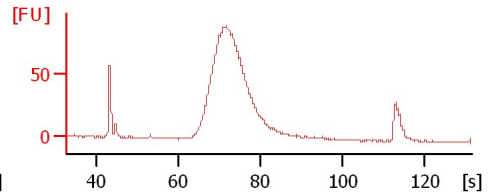
Block_4-pool



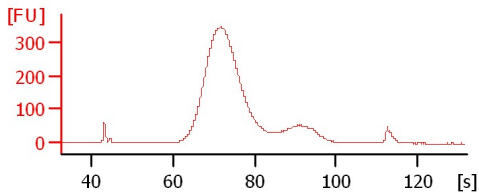
Block_7-pool



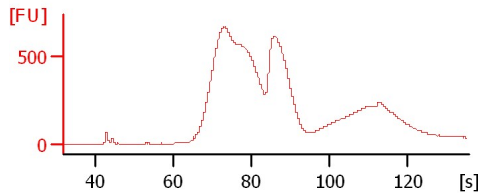
CMW_13(350 lib)



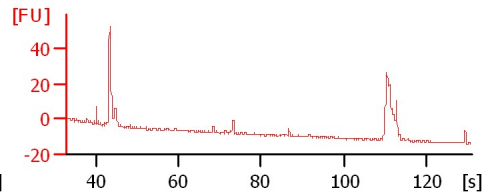
CMW_14(350 lib)



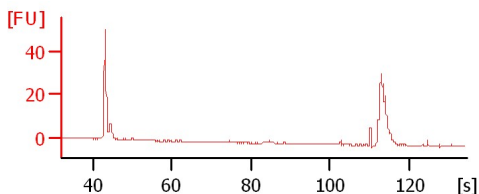
CMW_19(350 lib)



CMW_14(600 lib) (pink)



CMW_14(600 lib) (orange)



Assay Class: High Sensitivity DNA Assay
Data Path: C:\...ents and Settings\Bioanalyzer\2012-05-30\2012-05-30_004.xad

Created: 5/30/2012 3:38:06 PM
Modified: 5/30/2012 4:16:37 PM

Electrophoresis File Run Summary (Chip Summary)

Sample Name	Sample Comment	Rest. Digest	Status	Observation	Result Label	Result Color
Block_1-pool		<input type="checkbox"/>	✓			
Block_2-pool		<input type="checkbox"/>	✓			
Block_3-pool		<input type="checkbox"/>	✓			
Block_4-pool		<input type="checkbox"/>	✓			
Block_7-pool		<input type="checkbox"/>	✓			
CMW_13(350 lib)		<input type="checkbox"/>	✓			
CMW_14(350 lib)		<input type="checkbox"/>	✓			
CMW_19(350 lib)		<input type="checkbox"/>	✓			
CMW_14(600 lib) (pink)		<input type="checkbox"/>	✓			
CMW_14(600 lib) (orange)		<input type="checkbox"/>	✓			
Ladder		<input type="checkbox"/>	✓			

Chip Lot #

Reagent Kit Lot #

Chip Comments :

Assay Class: High Sensitivity DNA Assay
Data Path: C:\...ents and Settings\Bioanalyzer\2012-05-30\2012-05-30_004.xad

Created: 5/30/2012 3:38:06 PM
Modified: 5/30/2012 4:16:37 PM

Electrophoresis Assay Details

General Analysis Settings

Number of Available Sample and Ladder Wells (Max.) : 12
Minimum Visible Range [s] : 32
Maximum Visible Range [s] : 138
Start Analysis Time Range [s] : 33
End Analysis Time Range [s] : 137.5
Ladder Concentration [pg/μl] : 1950
Uses Standard Area for Ladder Fragments
Lower Marker Concentration [pg/μl] : 125
Upper Marker Concentration [pg/μl] : 75
Used Upper Marker for Quantitation
Standard Curve Fit is Point to Point
Show Data Aligned to Lower and Upper Marker

Integrator Settings

Integration Start Time [s] : 33.05
Integration End Time [s] : 137
Slope Threshold : 0.8
Height Threshold [FU] : 5
Area Threshold : 0.1
Width Threshold [s] : 0.6
Baseline Plateau [s] : 0.5

Filter Settings

Filter Width [s] : 0.5
Polynomial Order : 4

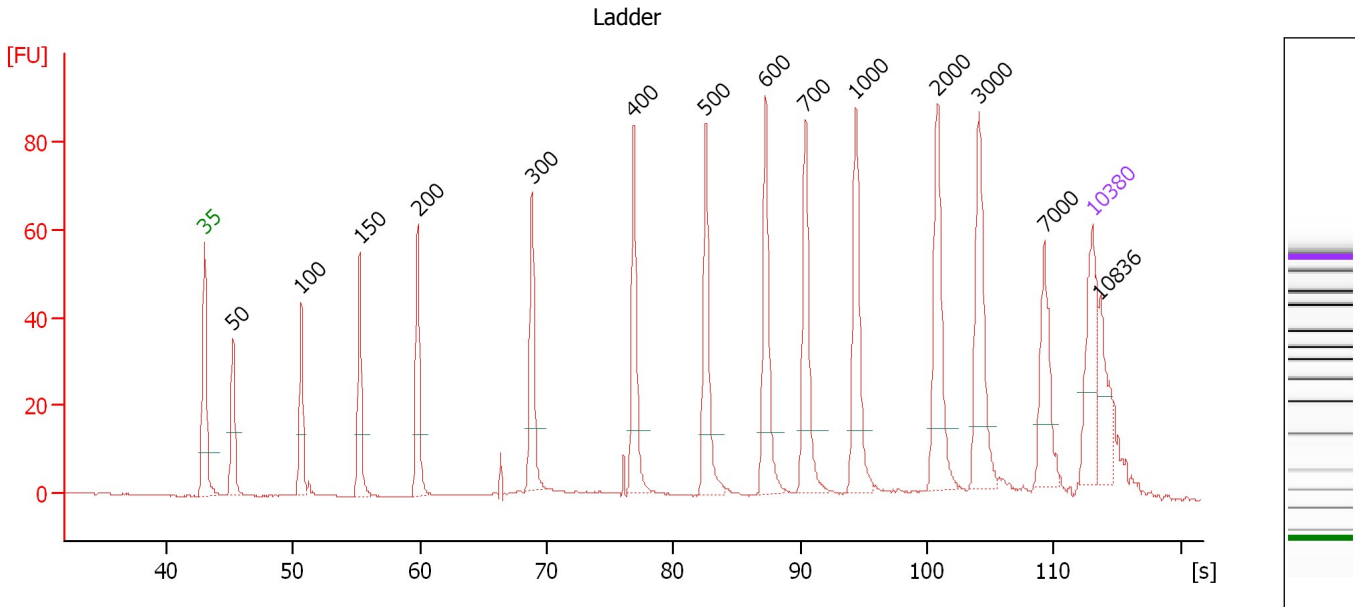
Ladder

Ladder Peak	Size	Area
1	35	160
2	50	210
3	100	208
4	150	221
5	200	242
6	300	270
7	400	305
8	500	306
9	600	336
10	700	321
11	1000	366
12	2000	413
13	3000	411
14	7000	400
15	10380	214

Assay Class: High Sensitivity DNA Assay
 Data Path: C:\...ents and Settings\Bioanalyzer\2012-05-30\2012-05-30_004.xad

Created: 5/30/2012 3:38:06 PM
 Modified: 5/30/2012 4:16:37 PM

Electropherogram Summary



Overall Results for Ladder

Noise: 0.1

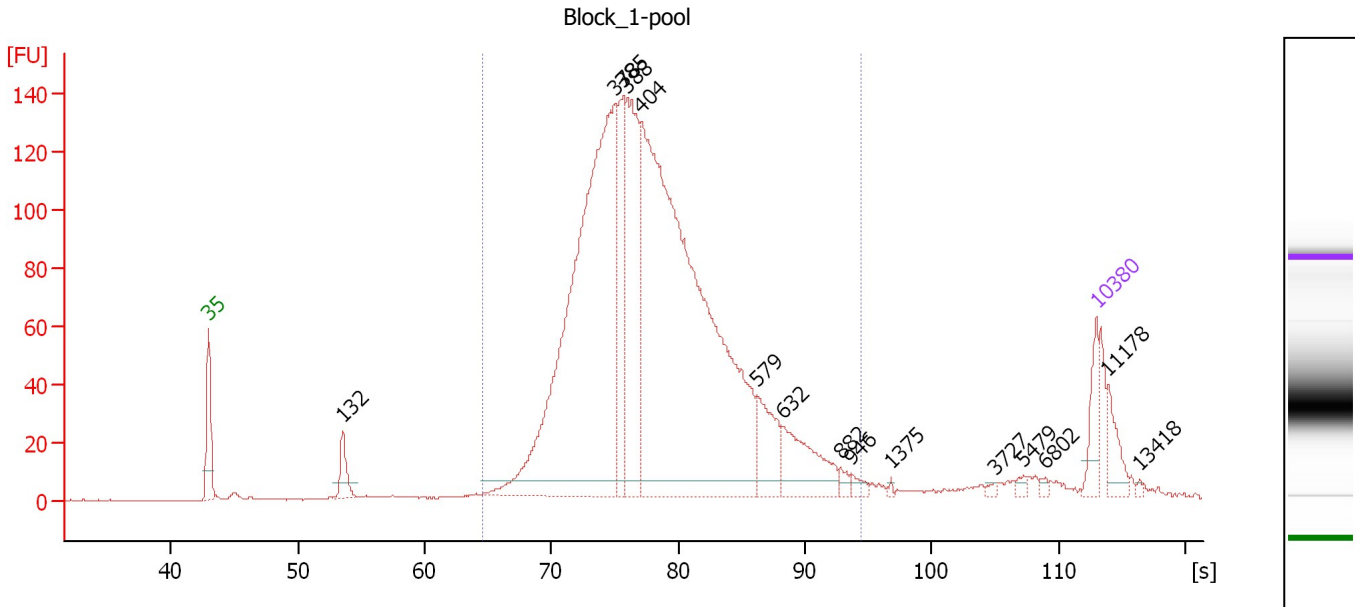
Peak table for Ladder

Peak	Size [bp]	Conc. [pg/µl]	Molarity [pmol/l]	Observations
1	35	125.00	5,411.3	Lower Marker
2	50	150.00	4,545.5	Ladder Peak
3	100	150.00	2,272.7	Ladder Peak
4	150	150.00	1,515.2	Ladder Peak
5	200	150.00	1,136.4	Ladder Peak
6	300	150.00	757.6	Ladder Peak
7	400	150.00	568.2	Ladder Peak
8	500	150.00	454.5	Ladder Peak
9	600	150.00	378.8	Ladder Peak
10	700	150.00	324.7	Ladder Peak
11	1,000	150.00	227.3	Ladder Peak
12	2,000	150.00	113.6	Ladder Peak
13	3,000	150.00	75.8	Ladder Peak
14	7,000	150.00	32.5	Ladder Peak
15	10,380	75.00	10.9	Upper Marker
16	10,836	0.00	0.0	

Assay Class: High Sensitivity DNA Assay
 Data Path: C:\...ents and Settings\Bioanalyzer\2012-05-30\2012-05-30_004.xad

Created: 5/30/2012 3:38:06 PM
 Modified: 5/30/2012 4:16:37 PM

Electropherogram Summary Continued ...



Overall Results for sample 1 : Block_1-pool

Number of peaks found: 15 Corr. Area 1: 2,235.4
 Noise: 0.2

Peak table for sample 1 : Block_1-pool

Peak	Size [bp]	Conc. [pg/μl]	Molarity [pmol/l]	Observations
1	35	125.00	5,411.3	Lower Marker
2	132	92.89	1,069.1	
3	378	2,037.24	8,170.8	
4	385	316.91	1,246.6	
5	388	554.03	2,161.5	
6	404	2,478.34	9,283.7	
7	579	168.85	442.2	
8	632	205.99	493.5	
9	882	20.06	34.5	
10	946	20.60	33.0	
11	1,375	4.42	4.9	
12	3,727	7.35	3.0	
13	5,479	11.45	3.2	
14	6,802	8.64	1.9	
15	10,380	75.00	10.9	Upper Marker
16	11,178	0.00	0.0	
17	13,418	0.00	0.0	

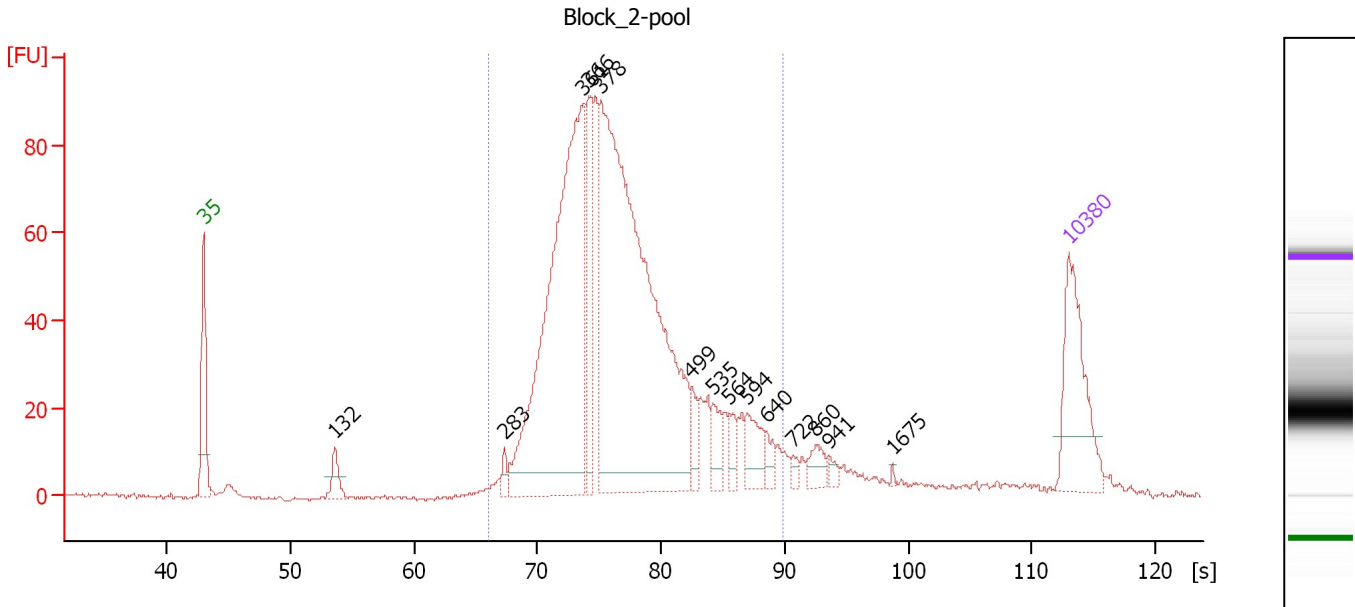
Region table for sample 1 : Block_1-pool

From [bp]	To [bp]	Average Size [bp]	Molarity [pmol/l]	Conc. [pg/μl]	Corr. Area	% of Total	Size distribution in CV [%]	Color
254	1,000	434	21,549.8	5,816.03	2,235.4	93	23.8	Blue

Assay Class: High Sensitivity DNA Assay
 Data Path: C:\...ents and Settings\Bioanalyzer\2012-05-30\2012-05-30_004.xad

Created: 5/30/2012 3:38:06 PM
 Modified: 5/30/2012 4:16:37 PM

Electropherogram Summary Continued ...



Overall Results for sample 2 : Block_2-pool

Number of peaks found: 14 Corr. Area 1: 1,286.5
 Noise: 0.4

Peak table for sample 2 : Block_2-pool

Peak	Size [bp]	Conc. [pg/μl]	Molarity [pmol/l]	Observations
1	35	125.00	5,411.3	Lower Marker
2	132	23.53	269.6	
3	283	8.50	45.5	
4	361	486.51	2,039.8	
5	366	91.27	377.6	
6	378	653.55	2,618.3	
7	499	19.46	59.0	
8	535	22.90	64.9	
9	564	14.33	38.5	
10	594	30.48	77.7	
11	640	12.23	29.0	
12	722	6.33	13.3	
13	860	15.13	26.7	
14	941	5.53	8.9	
15	1,675	1.18	1.1	
16	10,380	75.00	10.9	Upper Marker

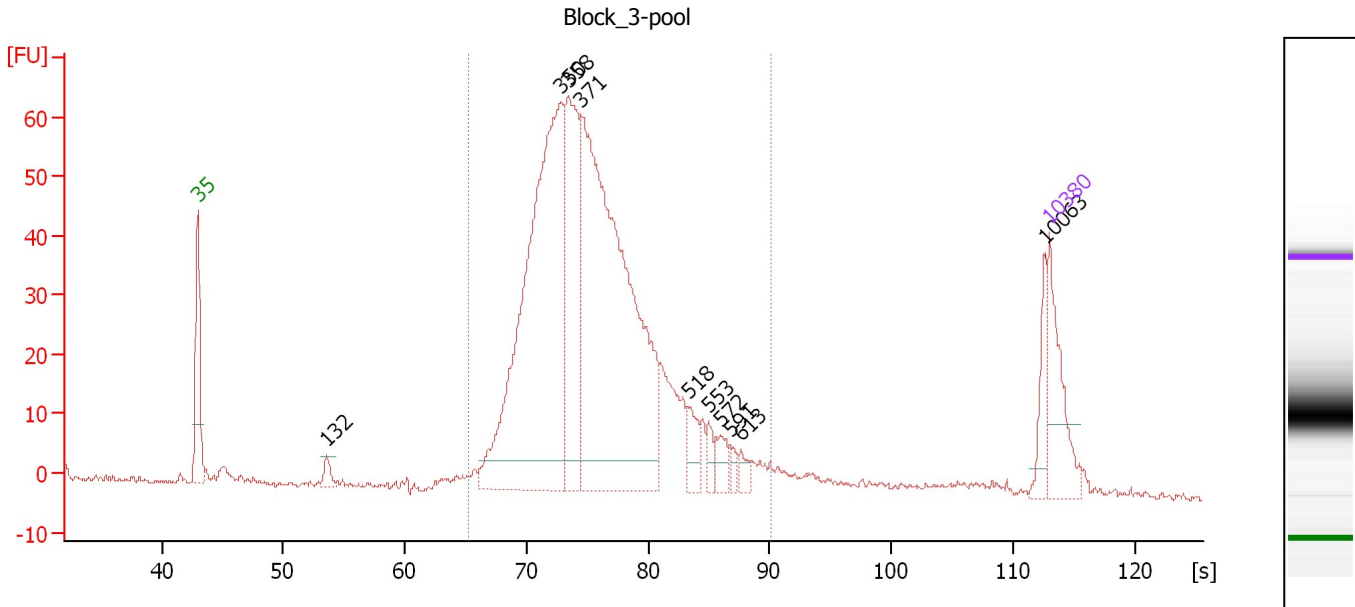
Region table for sample 2 : Block_2-pool

From [bp]	To [bp]	Average Size [bp]	Molarity [pmol/l]	Conc. [pg/μl]	Corr. Area	% of Total	Size distribution in CV [%]	Color
270	681	409	5,727.6	1,480.06	1,286.5	91	19.6	Blue

Assay Class: High Sensitivity DNA Assay
 Data Path: C:\...ents and Settings\Bioanalyzer\2012-05-30\2012-05-30_004.xad

Created: 5/30/2012 3:38:06 PM
 Modified: 5/30/2012 4:16:37 PM

Electropherogram Summary Continued ...



Overall Results for sample 3 : Block_3-pool

Number of peaks found: 10 Corr. Area 1: 943.6
 Noise: 0.5

Peak table for sample 3 : Block_3-pool

Peak	Size [bp]	Conc. [pg/μl]	Molarity [pmol/l]	Observations
1	35	125.00	5,411.3	Lower Marker
2	132	17.50	201.2	
3	350	725.49	3,138.3	
4	358	231.01	977.7	
5	371	772.30	3,152.1	
6	518	32.29	94.5	
7	553	17.25	47.3	
8	572	23.26	61.6	
9	591	10.00	25.6	
10	613	12.63	31.2	
11	10,063	32.03	4.8	
12	10,380	75.00	10.9	Upper Marker

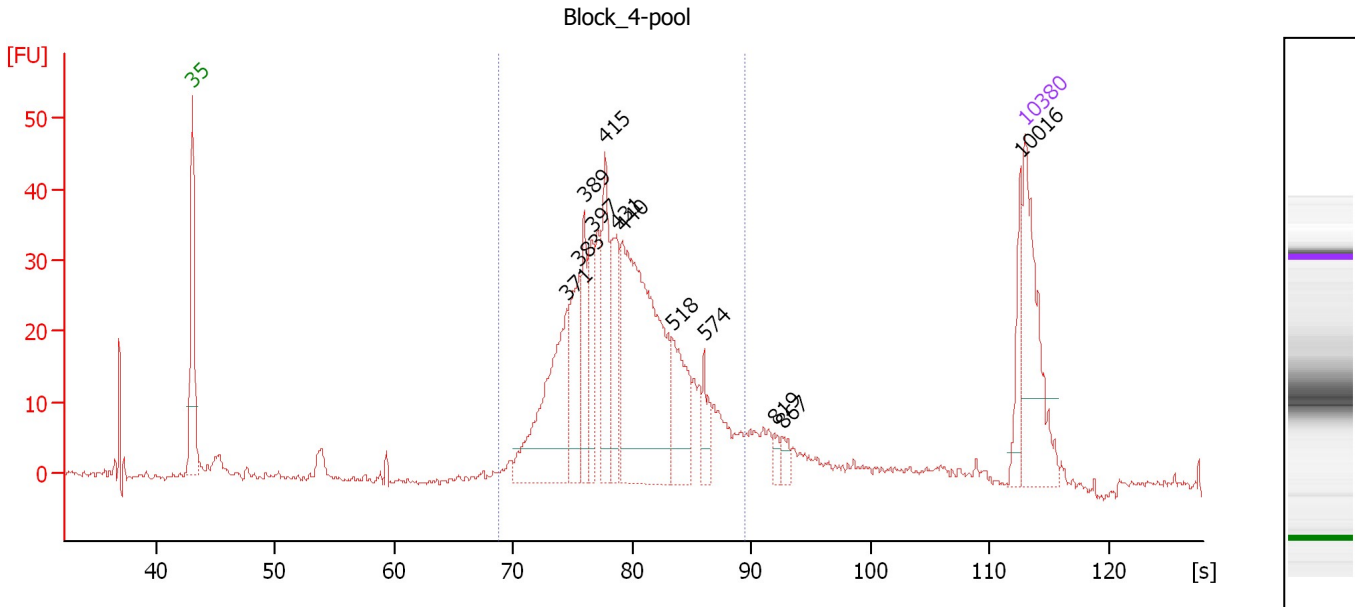
Region table for sample 3 : Block_3-pool

From [bp]	To [bp]	Average Size [bp]	Molarity [pmol/l]	Conc. [pg/μl]	Corr. Area	% of Total	Size distribution in CV [%]	Color
260	690	392	7,836.7	1,946.12	943.6	92	19.0	Blue

Assay Class: High Sensitivity DNA Assay
 Data Path: C:\...ents and Settings\Bioanalyzer\2012-05-30\2012-05-30_004.xad

Created: 5/30/2012 3:38:06 PM
 Modified: 5/30/2012 4:16:37 PM

Electropherogram Summary Continued ...



Overall Results for sample 4 : Block 4-pool

Number of peaks found: 12 Corr. Area 1: 504.6
 Noise: 0.5

Peak table for sample 4 : Block 4-pool

Peak	Size [bp]	Conc. [pg/μl]	Molarity [pmol/l]	Observations
1	35	125.00	5,411.3	Lower Marker
2	371	134.04	547.6	
3	383	62.13	245.6	
4	389	43.54	169.6	
5	397	43.57	166.1	
6	415	65.44	238.7	
7	431	59.86	210.3	
8	440	247.86	853.5	
9	518	58.51	171.2	
10	574	20.80	54.9	
11	819	7.54	13.9	
12	867	8.92	15.6	
13	10,016	24.59	3.7	
14	10,380	75.00	10.9	Upper Marker

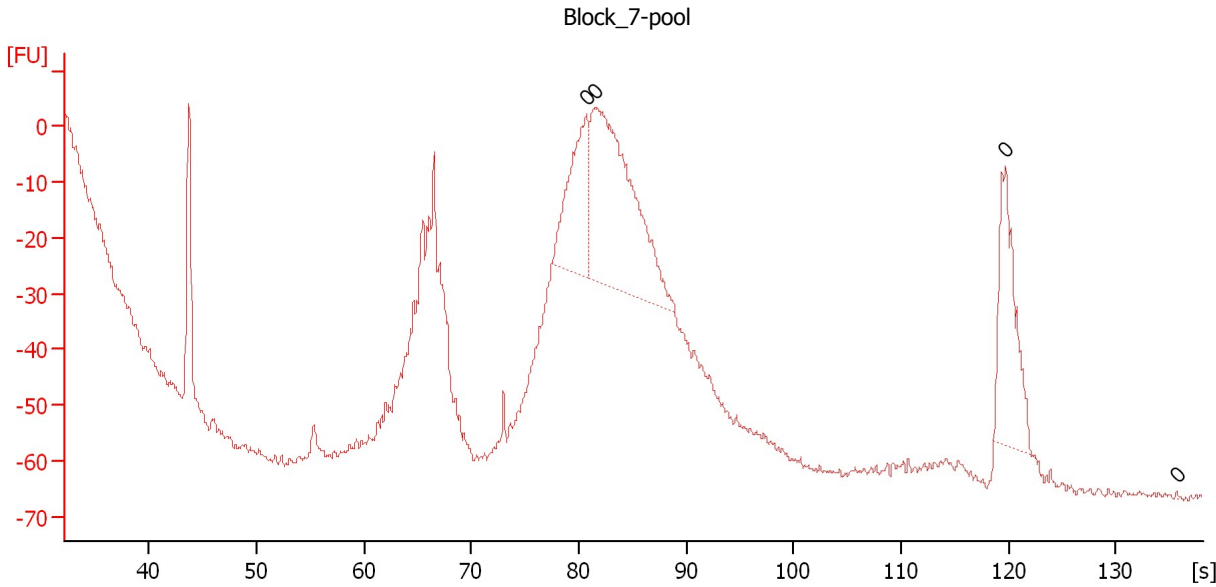
Region table for sample 4 : Block 4-pool

From [bp]	To [bp]	Average Size [bp]	Molarity [pmol/l]	Conc. [pg/μl]	Corr. Area	% of Total	Size distribution in CV [%]	Color
299	671	448	2,858.7	816.11	504.6	82	16.8	Blue

Assay Class: High Sensitivity DNA Assay
Data Path: C:\...ents and Settings\Bioanalyzer\2012-05-30\2012-05-30_004.xad

Created: 5/30/2012 3:38:06 PM
Modified: 5/30/2012 4:16:37 PM

Electropherogram Summary Continued ...



Setpoint Deviations for sample 5 : Block 7-pool

Height Threshold [FU] : 1

Overall Results for sample 5 : Block 7-pool

Number of peaks found: 0 Noise: 0.8

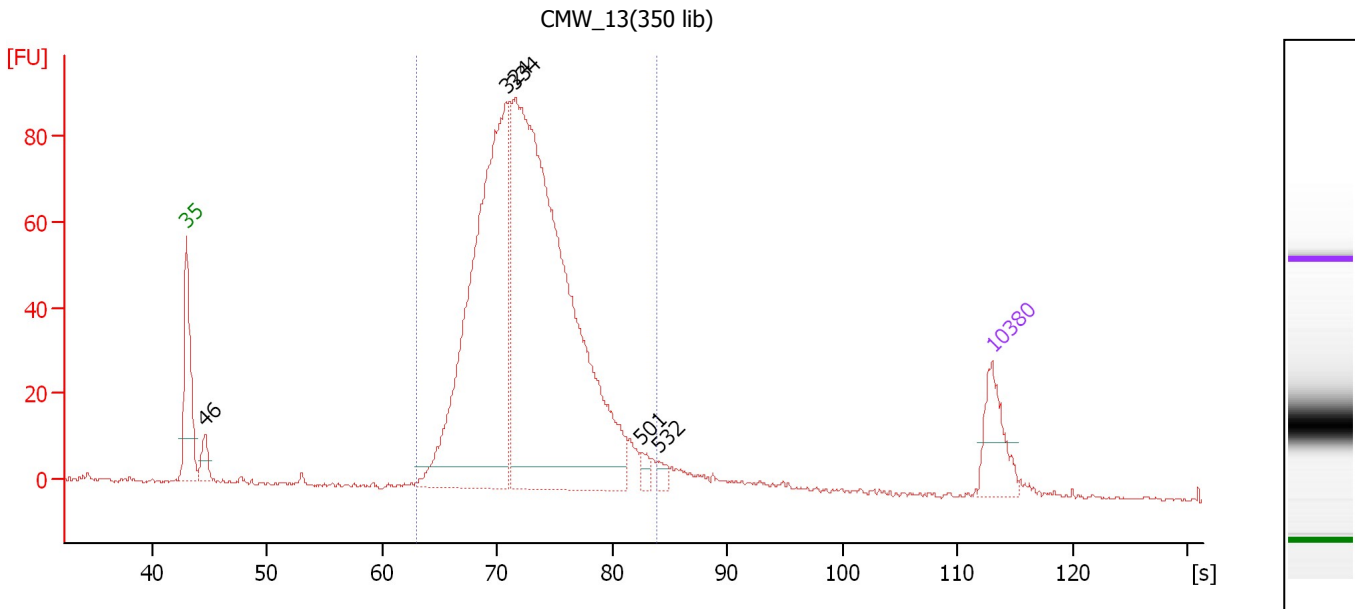
Peak table for sample 5 : Block 7-pool

Peak	Size [bp]	Conc. [pg/μl]	Molarity [pmol/l]	Observations
1	0	0.00	0.0	
2	0	0.00	0.0	
3	0	0.00	0.0	
4	0	0.00	0.0	

Assay Class: High Sensitivity DNA Assay
 Data Path: C:\...ents and Settings\Bioanalyzer\2012-05-30\2012-05-30_004.xad

Created: 5/30/2012 3:38:06 PM
 Modified: 5/30/2012 4:16:37 PM

Electropherogram Summary Continued ...



Overall Results for sample 6 : CMW_13(350 lib)

Number of peaks found: 5 Corr. Area 1: 1,230.1
 Noise: 0.5

Peak table for sample 6 : CMW_13(350 lib)

Peak	Size [bp]	Conc. [pg/μl]	Molarity [pmol/l]	Observations
1	35	125.00	5,411.3	Lower Marker
2	46	50.41	1,663.6	
3	324	1,017.63	4,759.7	
4	334	1,581.97	7,167.2	
5	501	18.44	55.8	
6	532	15.26	43.4	
7	10,380	75.00	10.9	Upper Marker

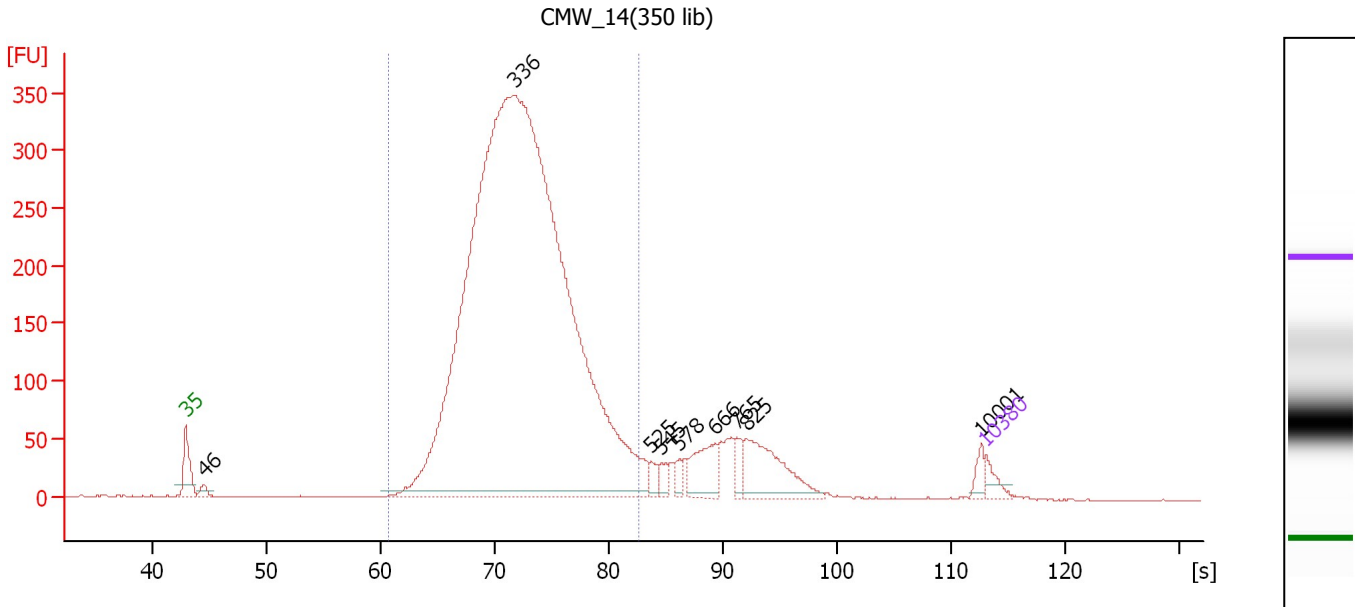
Region table for sample 6 : CMW_13(350 lib)

From [bp]	To [bp]	Average Size [bp]	Molarity [pmol/l]	Conc. [pg/μl]	Corr. Area	% of Total	Size distribution in CV [%]	Color
235	527	349	11,648.4	2,613.31	1,230.1	94	15.0	Blue

Assay Class: High Sensitivity DNA Assay
 Data Path: C:\...ents and Settings\Bioanalyzer\2012-05-30\2012-05-30_004.xad

Created: 5/30/2012 3:38:06 PM
 Modified: 5/30/2012 4:16:37 PM

Electropherogram Summary Continued ...



Overall Results for sample 7 : CMW_14(350 lib)

Number of peaks found: 9 Corr. Area 1: 5,010.9
 Noise: 0.4

Peak table for sample 7 : CMW_14(350 lib)

Peak	Size [bp]	Conc. [pg/μl]	Molarity [pmol/l]	Observations
1	35	125.00	5,411.3	Lower Marker
2	46	70.11	2,325.6	
3	336	15,860.30	71,417.6	
4	525	77.92	225.0	
5	545	84.47	235.0	
6	578	76.52	200.5	
7	666	341.76	777.5	
8	765	116.07	229.9	
9	825	587.31	1,078.4	
10	10,001	70.10	10.6	
11	10,380	75.00	10.9	Upper Marker

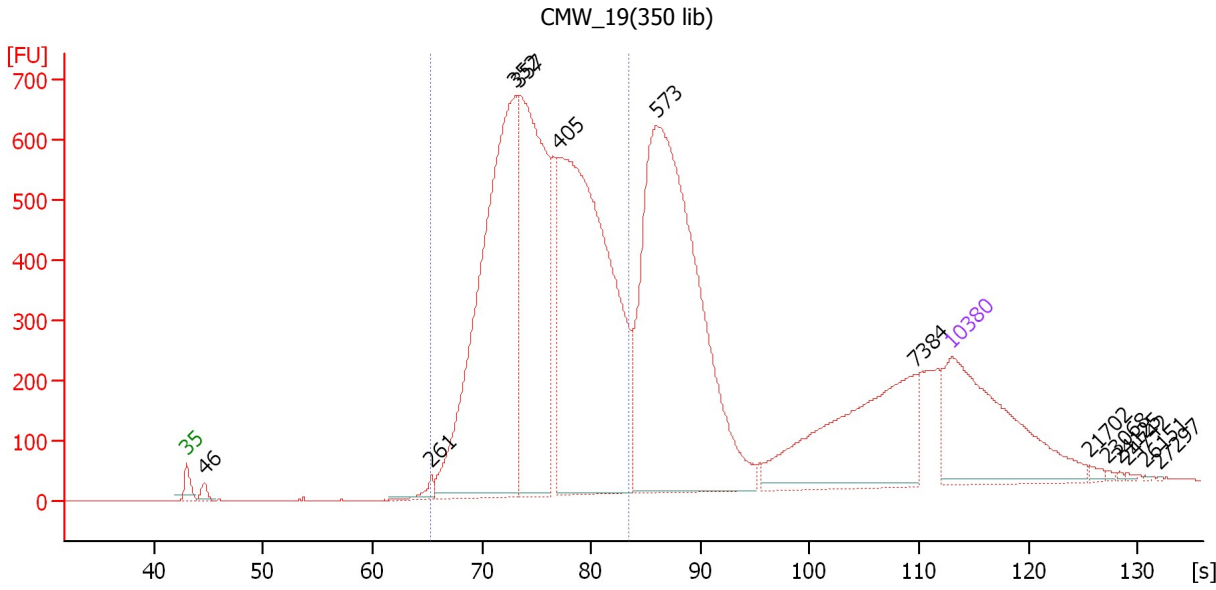
Region table for sample 7 : CMW_14(350 lib)

From [bp]	To [bp]	Average Size [bp]	Molarity [pmol/l]	Conc. [pg/μl]	Corr. Area	% of Total	Size distribution in CV [%]	Color
210	501	345	70,712.7	15,674.09	5,010.9	87	14.9	Blue

Assay Class: High Sensitivity DNA Assay
 Data Path: C:\...ents and Settings\Bioanalyzer\2012-05-30\2012-05-30_004.xad

Created: 5/30/2012 3:38:06 PM
 Modified: 5/30/2012 4:16:37 PM

Electropherogram Summary Continued ...



Overall Results for sample 8 : CMW_19(350 lib)

Number of peaks found: 13 Corr. Area 1: 10,282.2
 Noise: 0.3

Peak table for sample 8 : CMW_19(350 lib)

Peak	Size [bp]	Conc. [pg/μl]	Molarity [pmol/l]	Observations
1	35	125.00	5,411.3	Lower Marker
2	46	5.56	185.2	
3	261	5.04	29.2	
4	352	298.40	1,283.5	
5	357	207.69	882.6	
6	405	320.16	1,199.2	
7	573	317.86	840.2	
8	7,384	90.77	18.6	
9	10,380	75.00	10.9	Upper Marker
10	21,702	0.00	0.0	
11	23,068	0.00	0.0	
12	24,125	0.00	0.0	
13	24,742	0.00	0.0	
14	26,151	0.00	0.0	
15	27,297	0.00	0.0	

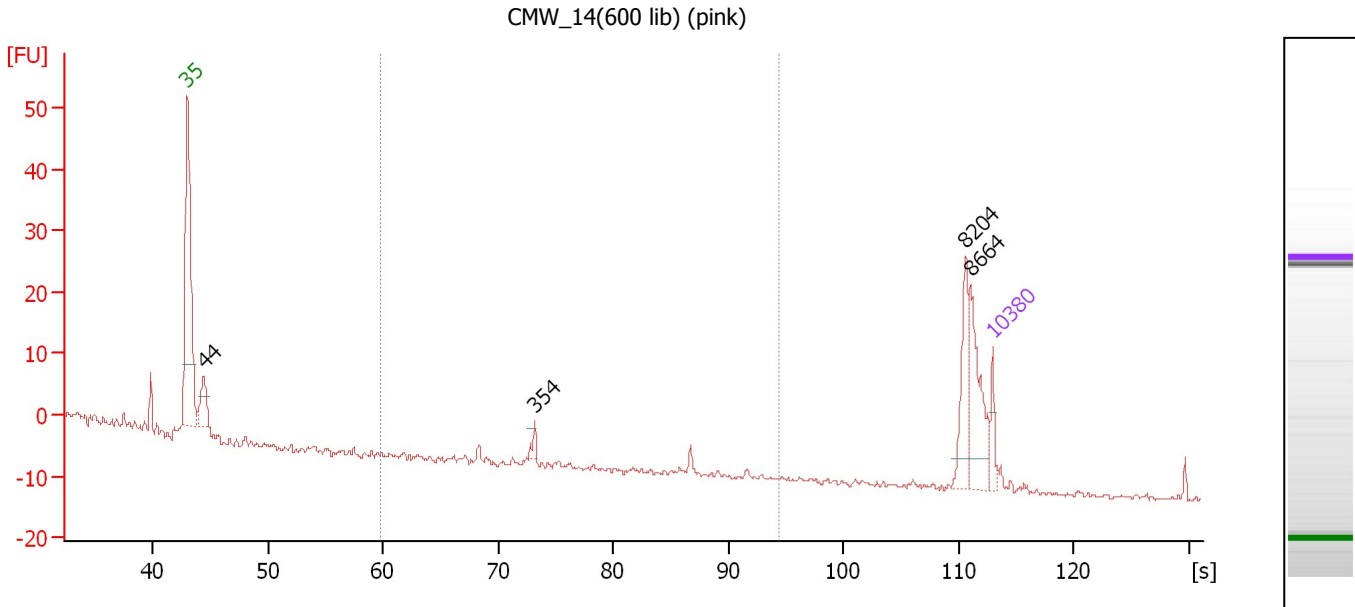
Region table for sample 8 : CMW_19(350 lib)

From [bp]	To [bp]	Average Size [bp]	Molarity [pmol/l]	Conc. [pg/μl]	Corr. Area	% of Total	Size distribution in CV [%]	Color
262	520	389	3,344.0	834.19	10,282.2	62	15.2	Blue

Assay Class: High Sensitivity DNA Assay
 Data Path: C:\...ents and Settings\Bioanalyzer\2012-05-30\2012-05-30_004.xad

Created: 5/30/2012 3:38:06 PM
 Modified: 5/30/2012 4:16:37 PM

Electropherogram Summary Continued ...



Overall Results for sample 9 : CMW 14(600 lib) (pink)

Number of peaks found: 4 Corr. Area 1: 1.9
 Noise: 0.4

Peak table for sample 9 : CMW 14(600 lib) (pink)

Peak	Size [bp]	Conc. [pg/μl]	Molarity [pmol/l]	Observations
1	35	125.00	5,411.3	Lower Marker
2	44	241.38	8,245.1	
3	354	40.43	172.8	
4	8,204	256.62	47.4	
5	8,664	324.35	56.7	
6	10,380	75.00	10.9	Upper Marker

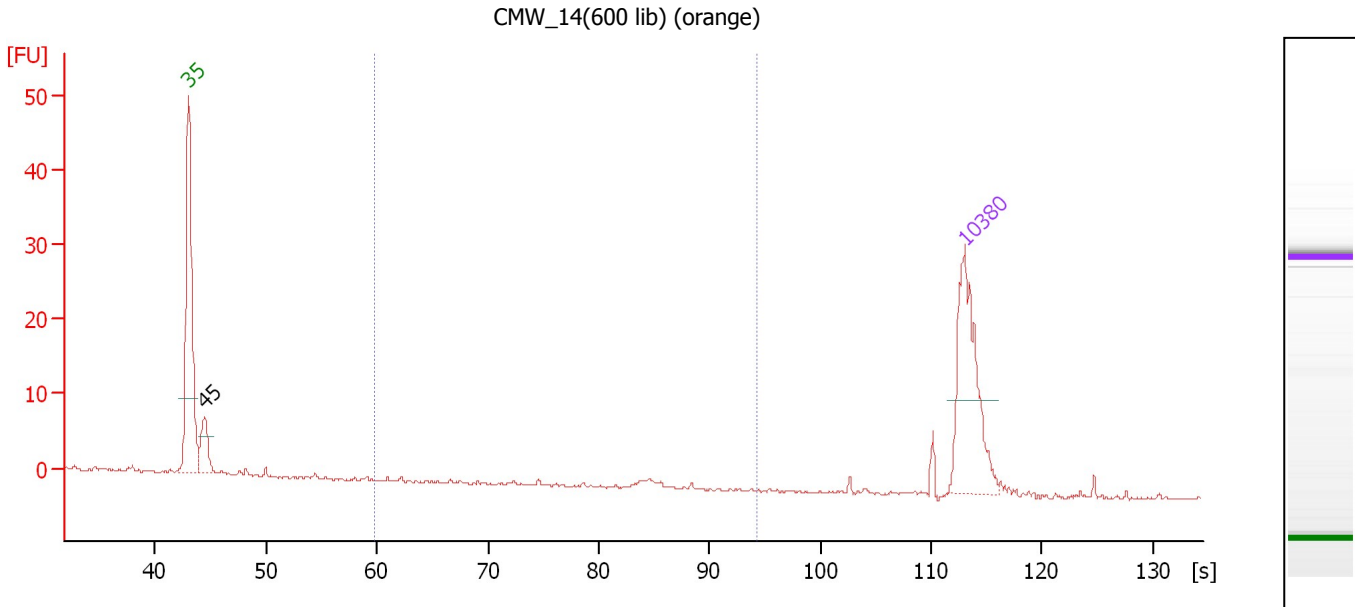
Region table for sample 9 : CMW 14(600 lib) (pink)

From [bp]	To [bp]	Average Size [bp]	Molarity [pmol/l]	Conc. [pg/μl]	Corr. Area	% of Total	Size distribution in CV [%]	Color
200	1,000	428	101.3	26.28	1.9	3	25.6	Blue

Assay Class: High Sensitivity DNA Assay
 Data Path: C:\...ents and Settings\Bioanalyzer\2012-05-30\2012-05-30_004.xad

Created: 5/30/2012 3:38:06 PM
 Modified: 5/30/2012 4:16:37 PM

Electropherogram Summary Continued ...



Overall Results for sample 10 : CMW_14(600 lib) (orange)

Number of peaks found: 1 Corr. Area 1: 0.5
 Noise: 0.1

Peak table for sample 10 : CMW_14(600 lib) (orange)

Peak	Size [bp]	Conc. [pg/μl]	Molarity [pmol/l]	Observations
1	35	125.00	5,411.3	Lower Marker
2	45	34.59	1,172.1	
3	10,380	75.00	10.9	Upper Marker

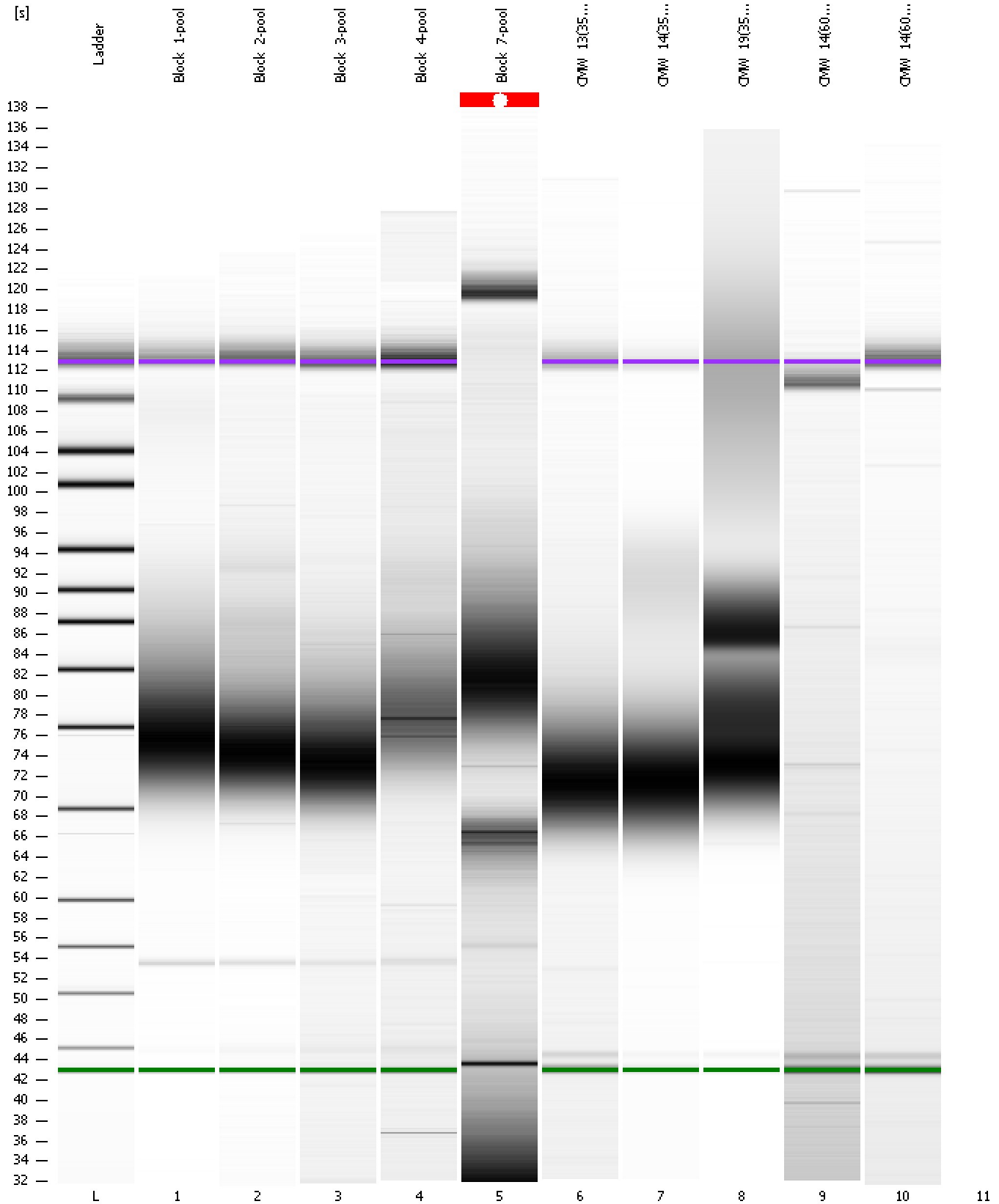
Region table for sample 10 : CMW_14(600 lib) (orange)

From [bp]	To [bp]	Average Size [bp]	Molarity [pmol/l]	Conc. [pg/μl]	Corr. Area	% of Total	Size distribution in CV [%]	Color
200	1,000	548	2.5	0.89	0.5	3	4.8	Blue

Assay Class: High Sensitivity DNA Assay
Data Path: C:\...ents and Settings\Bioanalyzer\2012-05-30\2012-05-30_004.xad

Created: 5/30/2012 3:38:06 PM
Modified: 5/30/2012 4:16:37 PM

Gel Image



Assay Class: High Sensitivity DNA Assay
Data Path: C:\...ents and Settings\Bioanalyzer\2012-05-30\2012-05-30_004.xad

Created: 5/30/2012 3:38:06 PM
Modified: 5/30/2012 4:16:37 PM

Invalid Samples

Sample 11 has not been run, no results available.

Assay Class: High Sensitivity DNA Assay
 Data Path: C:\...ents and Settings\Bioanalyzer\2012-05-30\2012-05-30_004.xad

Created: 5/30/2012 3:38:06 PM
 Modified: 5/30/2012 4:16:37 PM

Run Logbook

Description	Number	Source	Category	Sub Category	Time	Time Zone	User	Host
Run ended on port 1 (Number of wells acquired: 11)		Instrument	Run		5/30/2012 4:16:33 PM	(GMT --07:00) Pacific Standard Time	UC Davis	D8XSMGH1
Run started on port 1 (File: C:\Documents and Settings\Bioanalyzer\2012-05-30\2012-05-30_004.xad)		Instrument	Run		5/30/2012 3:38:12 PM	(GMT --07:00) Pacific Standard Time	UC Davis	D8XSMGH1
Product Number : G2938B		Instrument	Run		5/30/2012 3:38:12 PM	(GMT --07:00) Pacific Standard Time	UC Davis	D8XSMGH1
Name :		Instrument	Run		5/30/2012 3:38:12 PM	(GMT --07:00) Pacific Standard Time	UC Davis	D8XSMGH1
Vendor : Agilent Technologies		Instrument	Run		5/30/2012 3:38:12 PM	(GMT --07:00) Pacific Standard Time	UC Davis	D8XSMGH1
Serial# : DE13701086		Instrument	Run		5/30/2012 3:38:12 PM	(GMT --07:00) Pacific Standard Time	UC Davis	D8XSMGH1
Firmware : C.01.069		Instrument	Run		5/30/2012 3:38:12 PM	(GMT --07:00) Pacific Standard Time	UC Davis	D8XSMGH1
Cartridge : Electrode		Instrument	Run		5/30/2012 3:38:12 PM	(GMT --07:00) Pacific Standard Time	UC Davis	D8XSMGH1