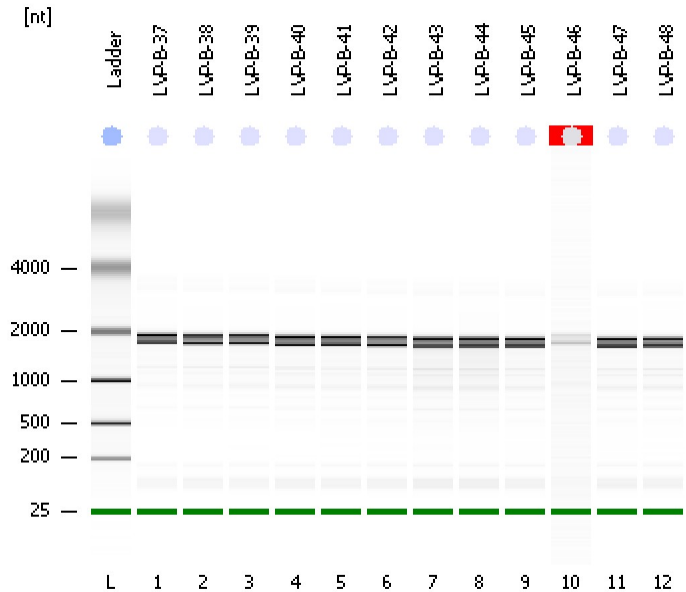


Assay Class: Eukaryote Total RNA Nano
Data Path: C:\...ents and Settings\Bioanalyzer\2012-05-30\2012-05-30_005.xad

Created: 5/30/2012 4:50:44 PM
Modified: 5/30/2012 5:16:32 PM

Electrophoresis File Run Summary



Instrument Information:

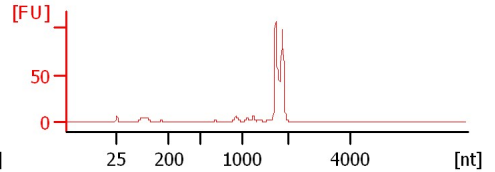
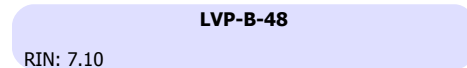
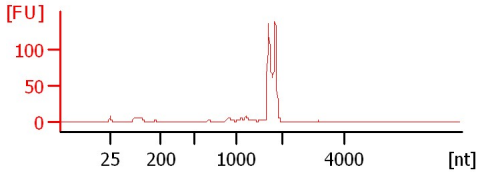
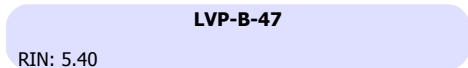
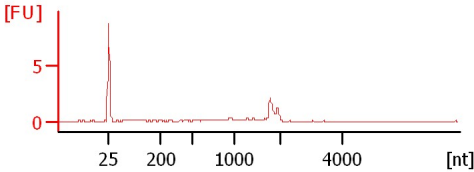
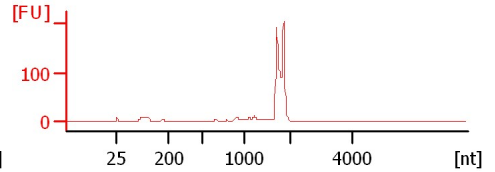
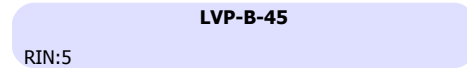
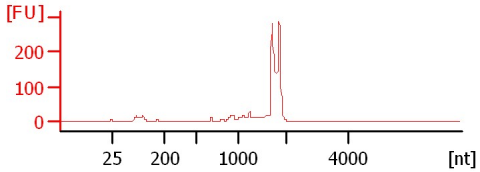
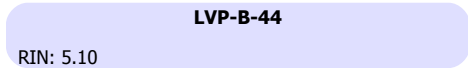
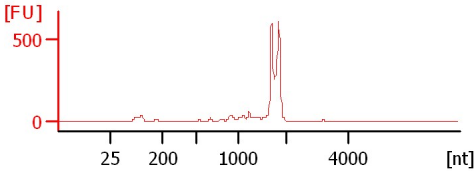
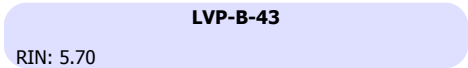
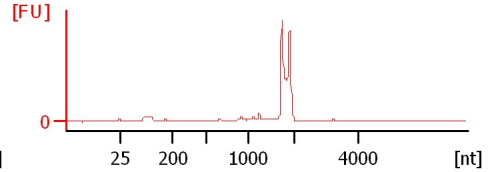
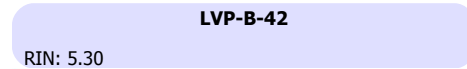
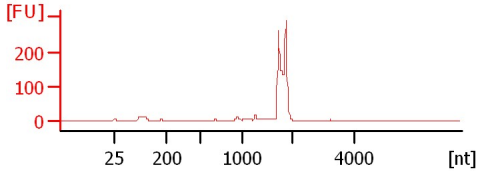
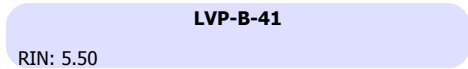
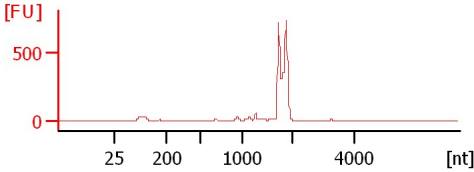
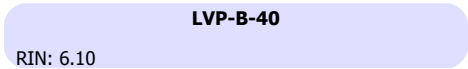
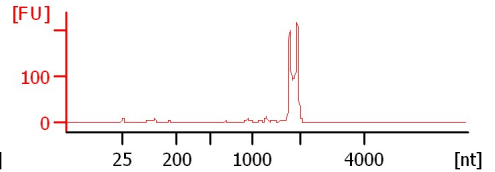
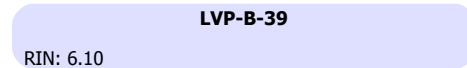
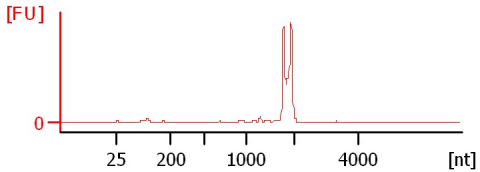
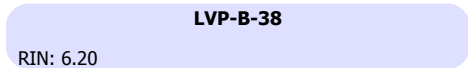
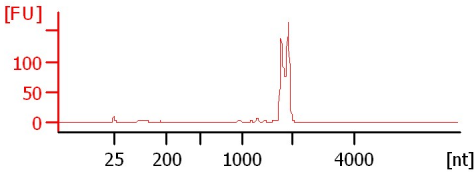
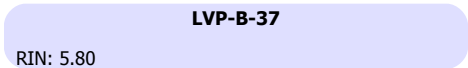
Instrument Name: DE13701086 Firmware: C.01.069
Serial#: DE13701086 Type: G2938B

Assay Information:

Assay Origin Path: C:\Program Files\Agilent\2100 bioanalyzer\2100 expert\assays\RNA\Eukaryote Total RNA Nano Series II.xsy
Assay Class: Eukaryote Total RNA Nano
Version: 2.6
Assay Comments: Total RNA Analysis ng sensitivity (Eukaryote)
© Copyright 2003 - 2009 Agilent Technologies, Inc.

Chip Information:

Chip Lot #:
Reagent Kit Lot #:
Chip Comments:



Assay Class: Eukaryote Total RNA Nano
 Data Path: C:\...ents and Settings\Bioanalyzer\2012-05-30\2012-05-30_005.xad

Created: 5/30/2012 4:50:44 PM
 Modified: 5/30/2012 5:16:32 PM

Electrophoresis File Run Summary (Chip Summary)

Sample Name	Sample Comment	Status	Result Label	Result Color
LVP-B-37		✓	RIN: 5.80	
LVP-B-38		✓	RIN: 6.20	
LVP-B-39		✓	RIN: 6.10	
LVP-B-40		✓	RIN: 6.10	
LVP-B-41		✓	RIN: 5.50	
LVP-B-42		✓	RIN: 5.30	
LVP-B-43		✓	RIN: 5.70	
LVP-B-44		✓	RIN: 5.10	
LVP-B-45		✓	RIN:5	
LVP-B-46		✓	RIN N/A	
LVP-B-47		✓	RIN: 5.40	
LVP-B-48		✓	RIN: 7.10	
Ladder		✓	All Other Samples	

Chip Lot #

Reagent Kit Lot #

Chip Comments :

Assay Class: Eukaryote Total RNA Nano
Data Path: C:\...ents and Settings\Bioanalyzer\2012-05-30\2012-05-30_005.xad

Created: 5/30/2012 4:50:44 PM
Modified: 5/30/2012 5:16:32 PM

Electrophoresis Assay Details

General Analysis Settings

Number of Available Sample and Ladder Wells (Max.) : 13
Minimum Visible Range [s] : 17
Maximum Visible Range [s] : 70
Start Analysis Time Range [s] : 19
End Analysis Time Range [s] : 69
Ladder Concentration [ng/μl] : 150
Lower Marker Concentration [ng/μl] : 0
Upper Marker Concentration [ng/μl] : 0
Used Lower Marker for Quantitation
Standard Curve Fit is Logarithmic
Show Data Aligned to Lower Marker

Integrator Settings

Integration Start Time [s] : 19
Integration End Time [s] : 69
Slope Threshold : 0.6
Height Threshold [FU] : 0.5
Area Threshold : 0.2
Width Threshold [s] : 0.5
Baseline Plateau [s] : 6

Filter Settings

Filter Width [s] : 0.5
Polynomial Order : 4

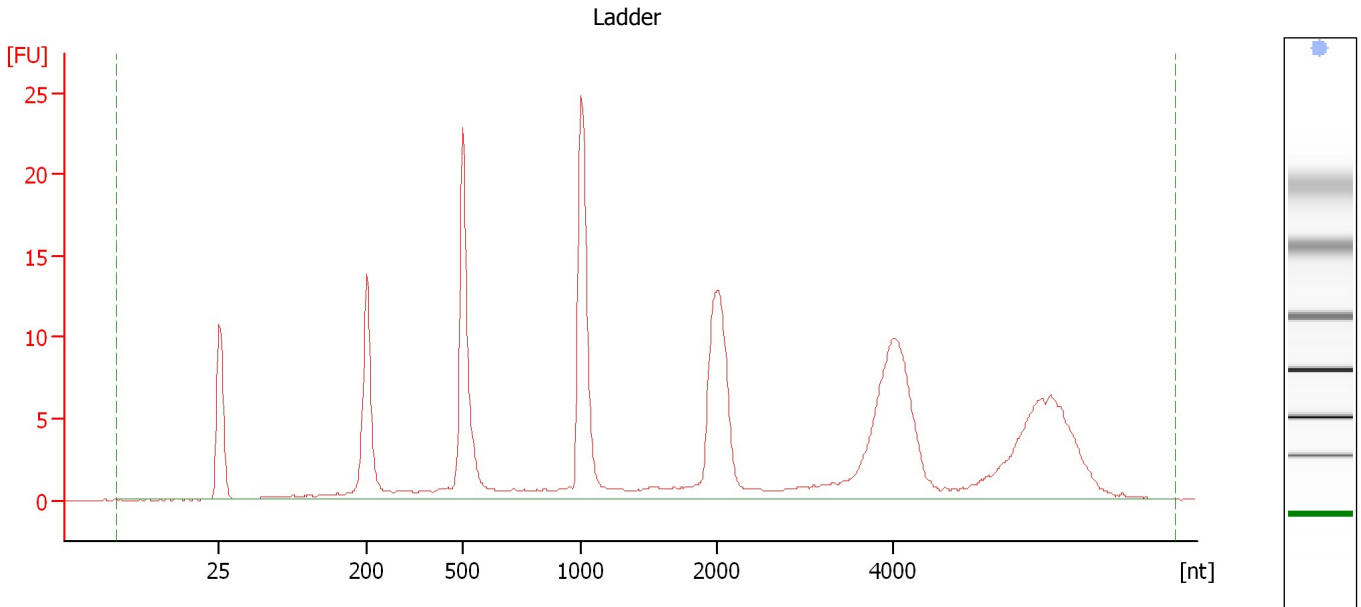
Ladder

Ladder Peak	Size
1	25
2	200
3	500
4	1000
5	2000
6	4000

Assay Class: Eukaryote Total RNA Nano
Data Path: C:\...ents and Settings\Bioanalyzer\2012-05-30\2012-05-30_005.xad

Created: 5/30/2012 4:50:44 PM
Modified: 5/30/2012 5:16:32 PM

Electropherogram Summary



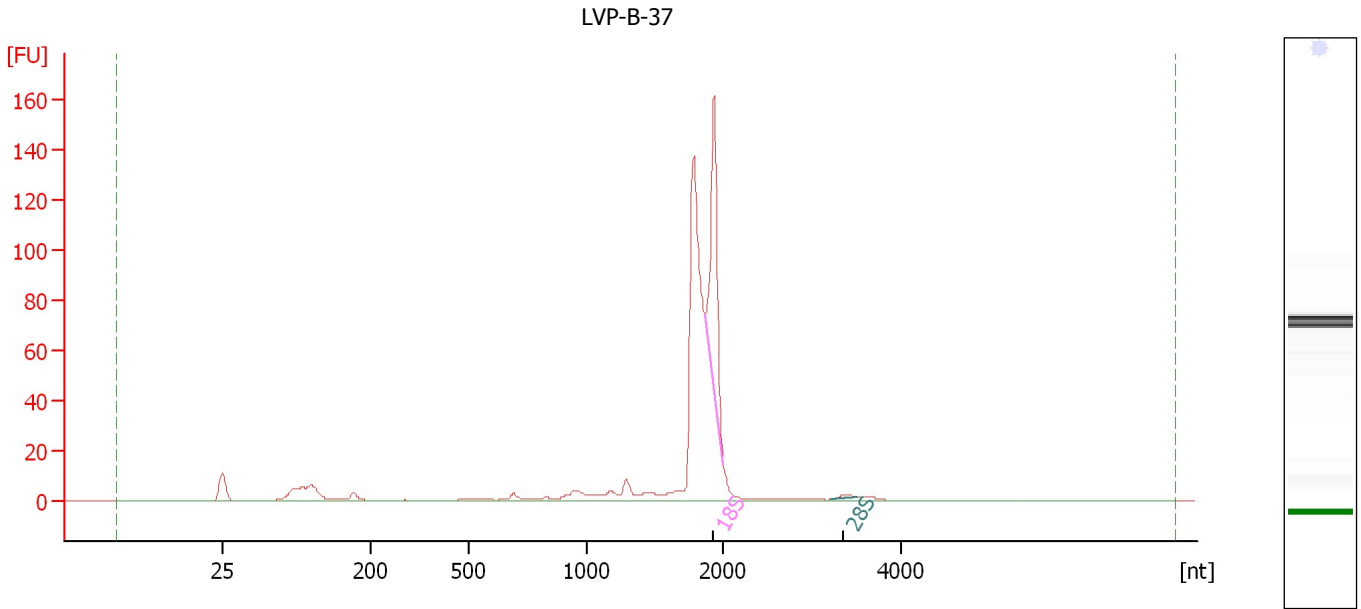
Overall Results for Ladder

RNA Area:	206.2	Result Flagging Color:	
RNA Concentration:	150 ng/μl	Result Flagging Label:	All Other Samples

Assay Class: Eukaryote Total RNA Nano
Data Path: C:\...ents and Settings\Bioanalyzer\2012-05-30\2012-05-30_005.xad

Created: 5/30/2012 4:50:44 PM
Modified: 5/30/2012 5:16:32 PM

Electropherogram Summary Continued ...



Overall Results for sample 1 : LVP-B-37

RNA Area: 452.1 RNA Integrity Number (RIN): 5.8 (B.02.08)
RNA Concentration: 329 ng/μl Result Flagging Color:
rRNA Ratio [28s / 18s]: 0.0 Result Flagging Label: RIN: 5.80

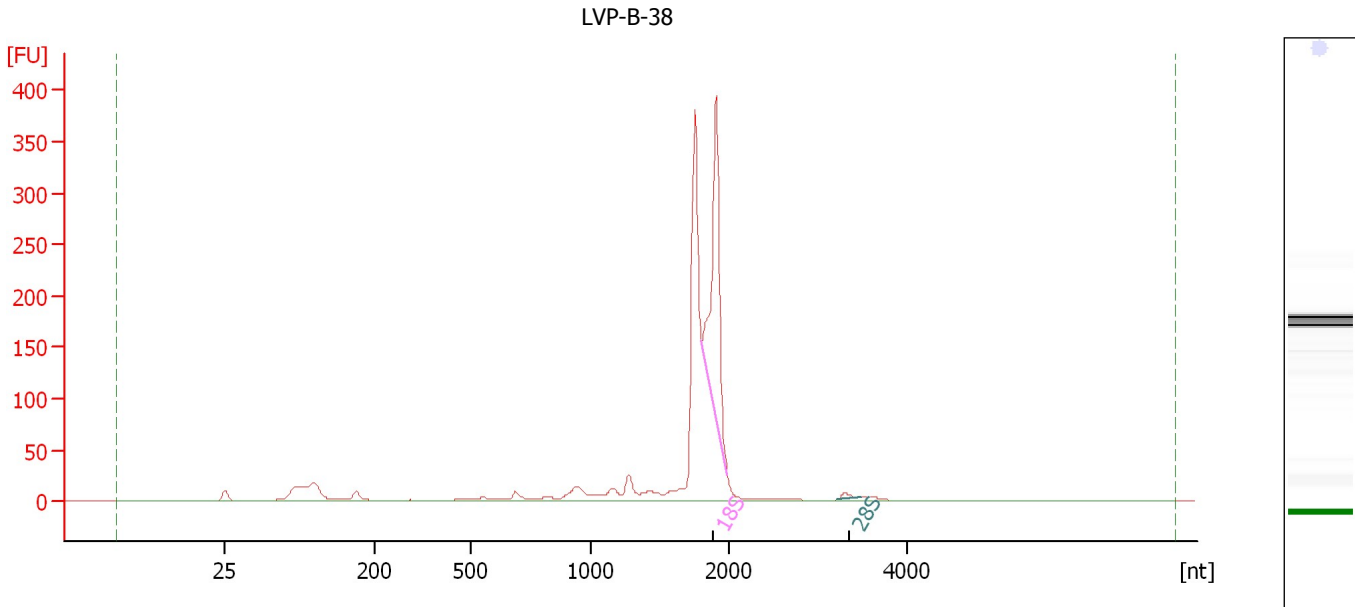
Fragment table for sample 1 : LVP-B-37

Name	Start Size [nt]	End Size [nt]	Area	% of total Area
18S	1,867	2,001	80.7	17.9
28S	3,206	3,495	1.6	0.4

Assay Class: Eukaryote Total RNA Nano
 Data Path: C:\...ents and Settings\Bioanalyzer\2012-05-30\2012-05-30_005.xad

Created: 5/30/2012 4:50:44 PM
 Modified: 5/30/2012 5:16:32 PM

Electropherogram Summary Continued ...



Overall Results for sample 2 : LVP-B-38

RNA Area:	1,143.3	RNA Integrity Number (RIN):	6.2 (B.02.08, Anomaly Threshold(s) manually adapted)
RNA Concentration:	832 ng/μl	Result Flagging Color:	
rRNA Ratio [28s / 18s]:	0.0	Result Flagging Label:	RIN: 6.20

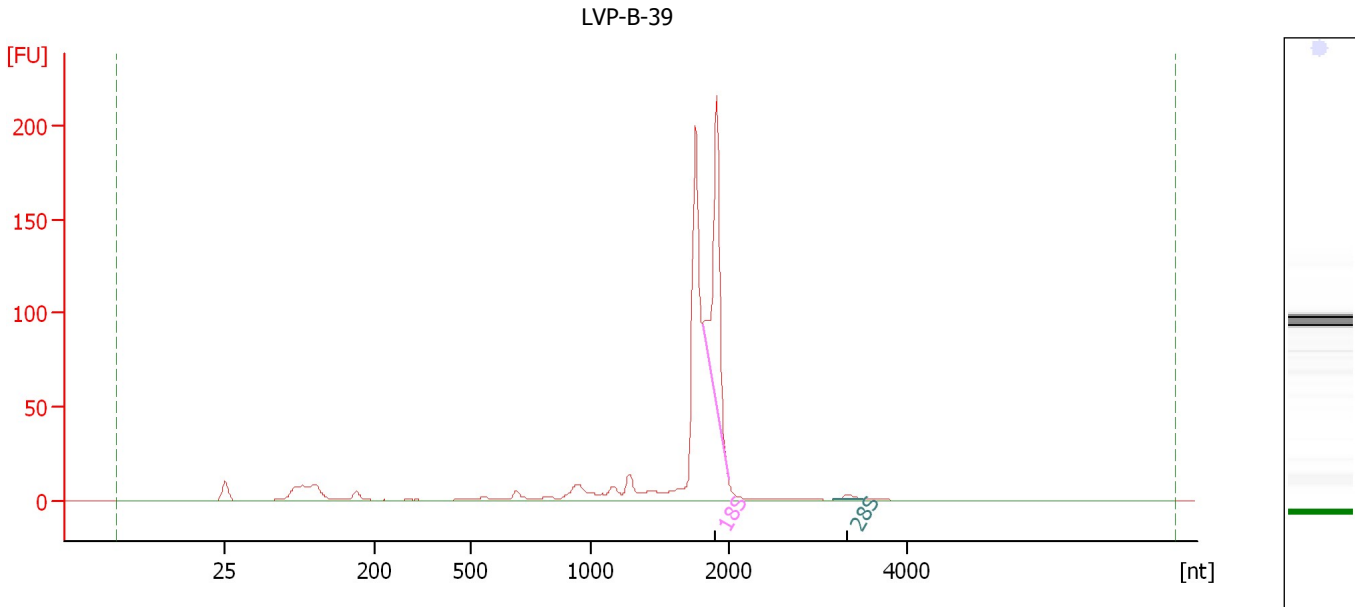
Fragment table for sample 2 : LVP-B-38

Name	Start Size [nt]	End Size [nt]	Area	% of total Area
18S	1,806	1,993	266.4	23.3
28S	3,214	3,490	5.3	0.5

Assay Class: Eukaryote Total RNA Nano
Data Path: C:\...ents and Settings\Bioanalyzer\2012-05-30\2012-05-30_005.xad

Created: 5/30/2012 4:50:44 PM
Modified: 5/30/2012 5:16:32 PM

Electropherogram Summary Continued ...



Overall Results for sample 3 : LVP-B-39

RNA Area:	622.4	RNA Integrity Number (RIN):	6.1 (B.02.08, Anomaly Threshold(s) manually adapted)
RNA Concentration:	453 ng/μl	Result Flagging Color:	
rRNA Ratio [28s / 18s]:	0.0	Result Flagging Label:	RIN: 6.10

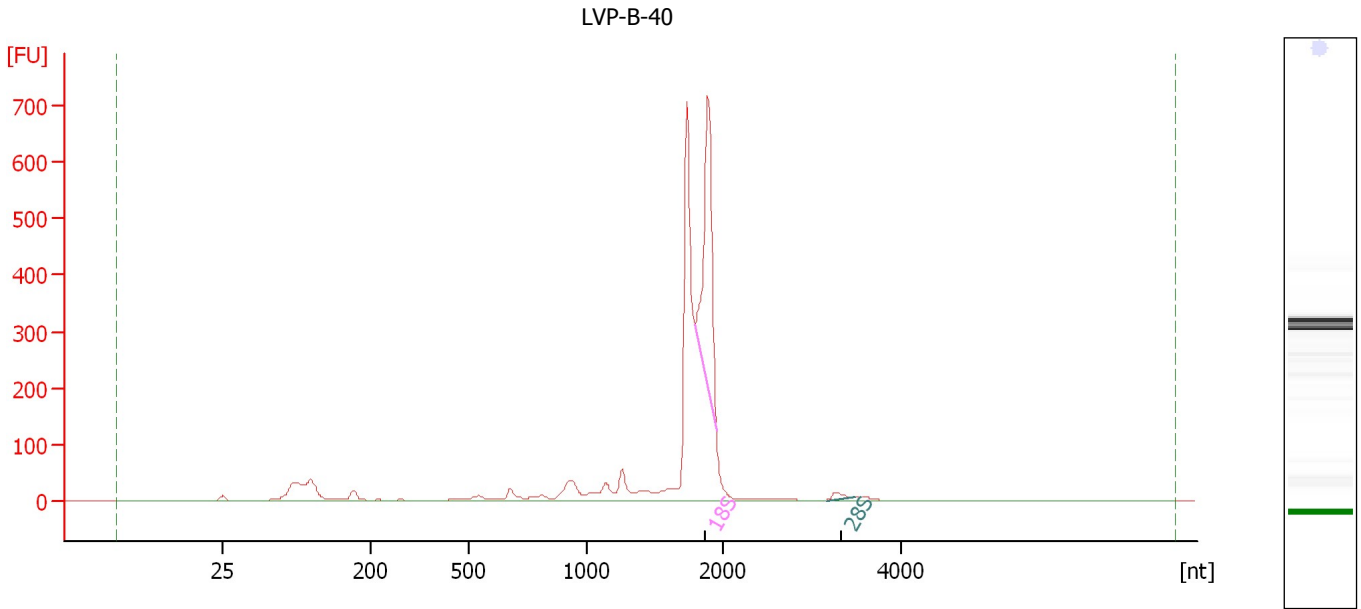
Fragment table for sample 3 : LVP-B-39

Name	Start Size [nt]	End Size [nt]	Area	% of total Area
18S	1,814	2,002	129.6	20.8
28S	3,190	3,514	2.4	0.4

Assay Class: Eukaryote Total RNA Nano
 Data Path: C:\...ents and Settings\Bioanalyzer\2012-05-30\2012-05-30_005.xad

Created: 5/30/2012 4:50:44 PM
 Modified: 5/30/2012 5:16:32 PM

Electropherogram Summary Continued ...



Overall Results for sample 4 : LVP-B-40

RNA Area:	2,270.0	RNA Integrity Number (RIN):	6.1 (B.02.08, Anomaly Threshold(s) manually adapted)
RNA Concentration:	1,652 ng/μl	Result Flagging Color:	
rRNA Ratio [28s / 18s]:	0.0	Result Flagging Label:	RIN: 6.10

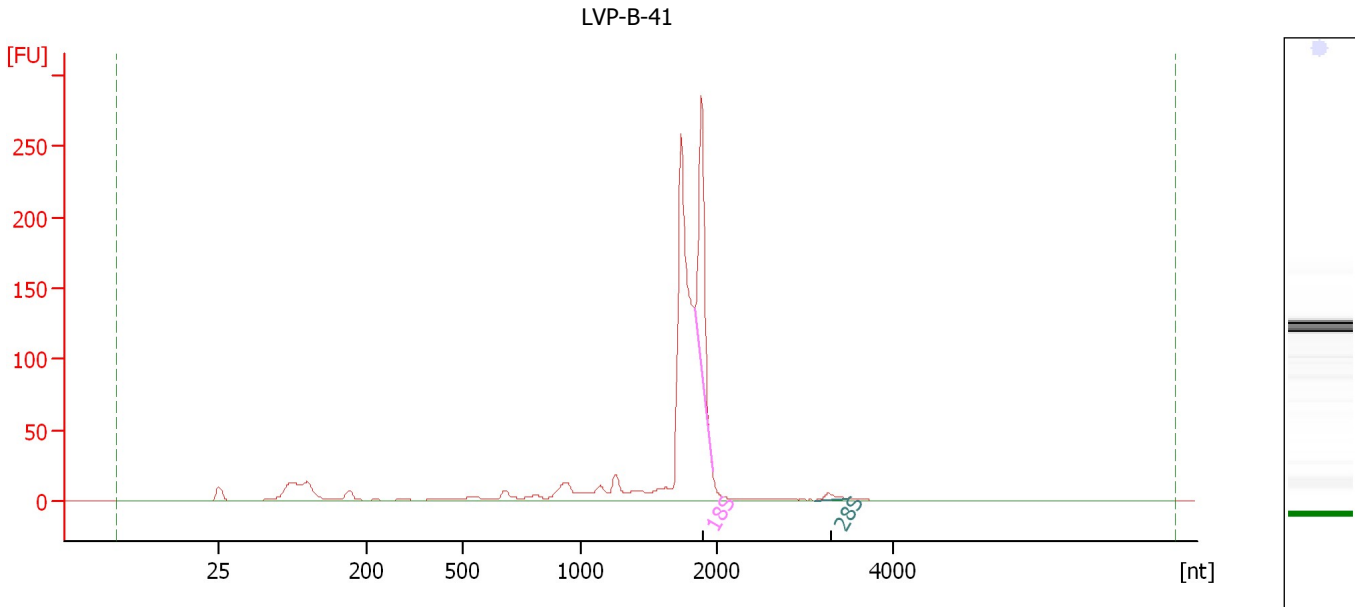
Fragment table for sample 4 : LVP-B-40

Name	Start Size [nt]	End Size [nt]	Area	% of total Area
18S	1,789	1,946	445.4	19.6
28S	3,157	3,471	12.1	0.5

Assay Class: Eukaryote Total RNA Nano
Data Path: C:\...ents and Settings\Bioanalyzer\2012-05-30\2012-05-30_005.xad

Created: 5/30/2012 4:50:44 PM
Modified: 5/30/2012 5:16:32 PM

Electropherogram Summary Continued ...



Overall Results for sample 5 : LVP-B-41

RNA Area:	884.2	RNA Integrity Number (RIN):	5.5 (B.02.08, Anomaly Threshold(s) manually adapted)
RNA Concentration:	643 ng/μl	Result Flagging Color:	
rRNA Ratio [28s / 18s]:	0.0	Result Flagging Label:	RIN: 5.50

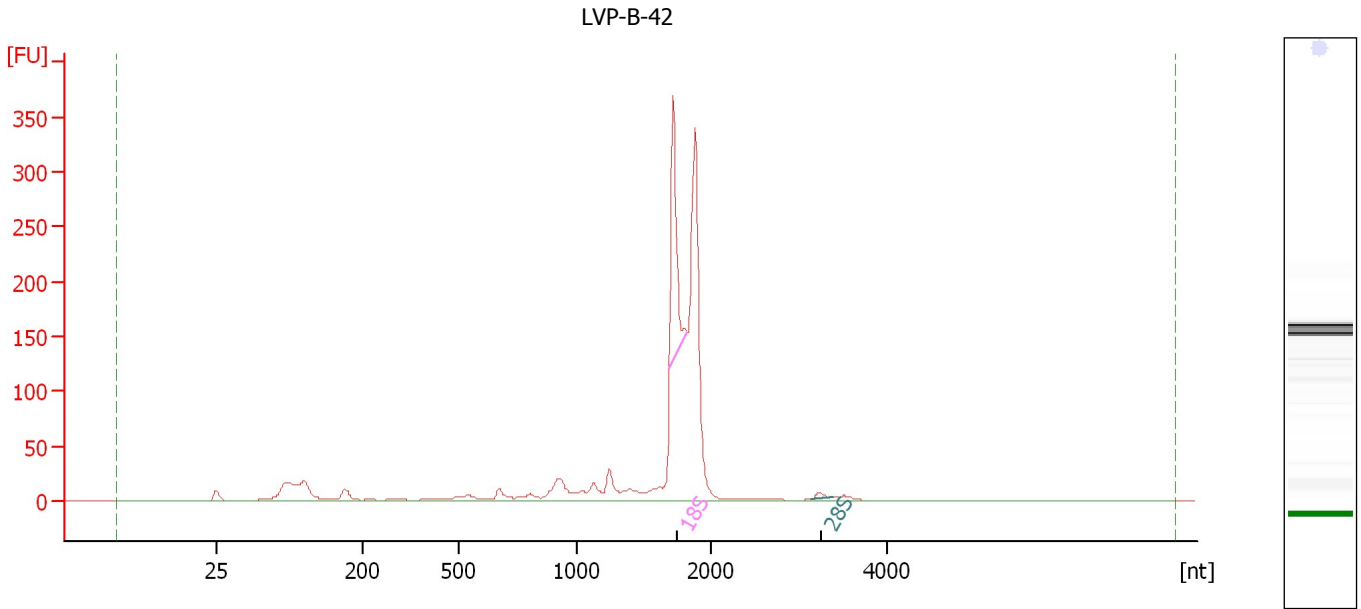
Fragment table for sample 5 : LVP-B-41

Name	Start Size [nt]	End Size [nt]	Area	% of total Area
18S	1,826	1,960	135.2	15.3
28S	3,115	3,466	4.2	0.5

Assay Class: Eukaryote Total RNA Nano
Data Path: C:\...ents and Settings\Bioanalyzer\2012-05-30\2012-05-30_005.xad

Created: 5/30/2012 4:50:44 PM
Modified: 5/30/2012 5:16:32 PM

Electropherogram Summary Continued ...



Overall Results for sample 6 : LVP-B-42

RNA Area: 1,135.4 RNA Integrity Number (RIN): 5.3 (B.02.08)
RNA Concentration: 826 ng/μl Result Flagging Color:
rRNA Ratio [28s / 18s]: 0.0 Result Flagging Label: RIN: 5.30

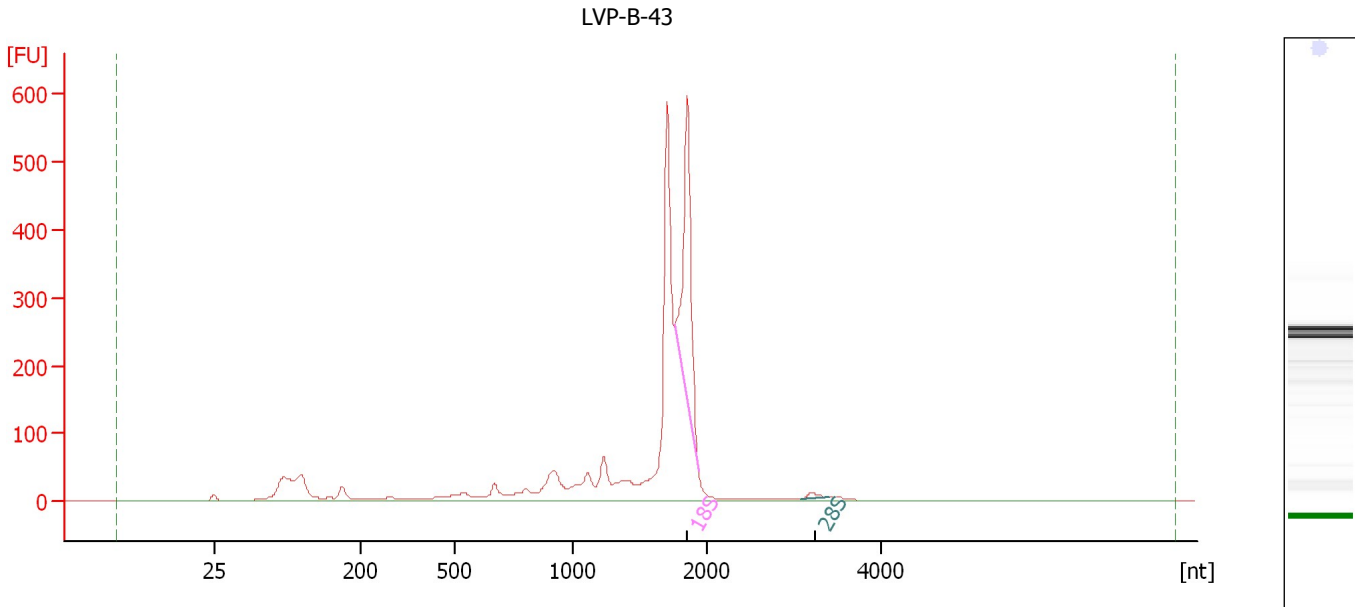
Fragment table for sample 6 : LVP-B-42

Name	Start Size [nt]	End Size [nt]	Area	% of total Area
18S	1,690	1,824	149.2	13.1
28S	3,132	3,401	4.8	0.4

Assay Class: Eukaryote Total RNA Nano
Data Path: C:\...ents and Settings\Bioanalyzer\2012-05-30\2012-05-30_005.xad

Created: 5/30/2012 4:50:44 PM
Modified: 5/30/2012 5:16:32 PM

Electropherogram Summary Continued ...



Overall Results for sample 7 : LVP-B-43

RNA Area: 2,246.3 RNA Integrity Number (RIN): 5.7 (B.02.08, Anomaly Threshold(s) manually adapted)
RNA Concentration: 1,634 ng/μl
rRNA Ratio [28s / 18s]: 0.0
Result Flagging Color:
Result Flagging Label: RIN: 5.70

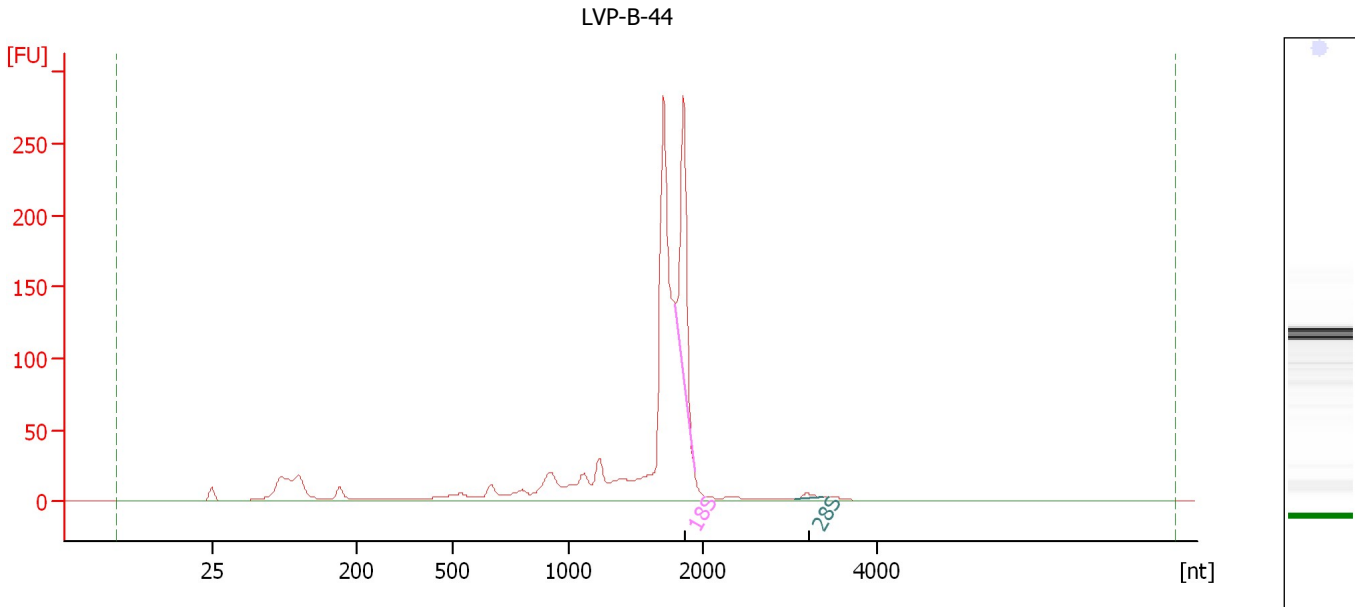
Fragment table for sample 7 : LVP-B-43

Name	Start Size [nt]	End Size [nt]	Area	% of total Area
18S	1,767	1,934	387.7	17.3
28S	3,075	3,393	9.2	0.4

Assay Class: Eukaryote Total RNA Nano
 Data Path: C:\...ents and Settings\Bioanalyzer\2012-05-30\2012-05-30_005.xad

Created: 5/30/2012 4:50:44 PM
 Modified: 5/30/2012 5:16:32 PM

Electropherogram Summary Continued ...



Overall Results for sample 8 : LVP-B-44

RNA Area:	1,075.9	RNA Integrity Number (RIN):	5.1 (B.02.08, Anomaly Threshold(s) manually adapted)
RNA Concentration:	783 ng/μl	Result Flagging Color:	
rRNA Ratio [28s / 18s]:	0.0	Result Flagging Label:	RIN: 5.10

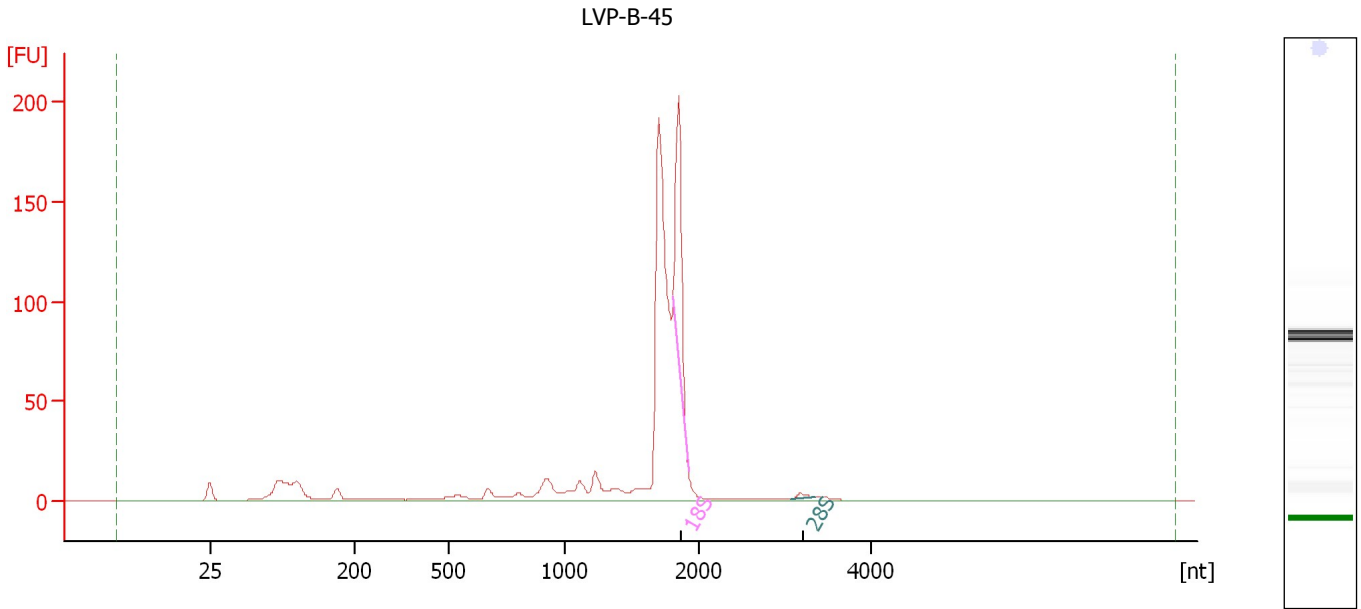
Fragment table for sample 8 : LVP-B-44

Name	Start Size [nt]	End Size [nt]	Area	% of total Area
18S	1,797	1,933	139.8	13.0
28S	3,066	3,373	3.4	0.3

Assay Class: Eukaryote Total RNA Nano
Data Path: C:\...ents and Settings\Bioanalyzer\2012-05-30\2012-05-30_005.xad

Created: 5/30/2012 4:50:44 PM
Modified: 5/30/2012 5:16:32 PM

Electropherogram Summary Continued ...



Overall Results for sample 9 : LVP-B-45

RNA Area: 652.3 RNA Integrity Number (RIN): 5 (B.02.08, Anomaly Threshold(s) manually adapted)
RNA Concentration: 475 ng/μl
rRNA Ratio [28s / 18s]: 0.0
Result Flagging Color:
Result Flagging Label: RIN:5

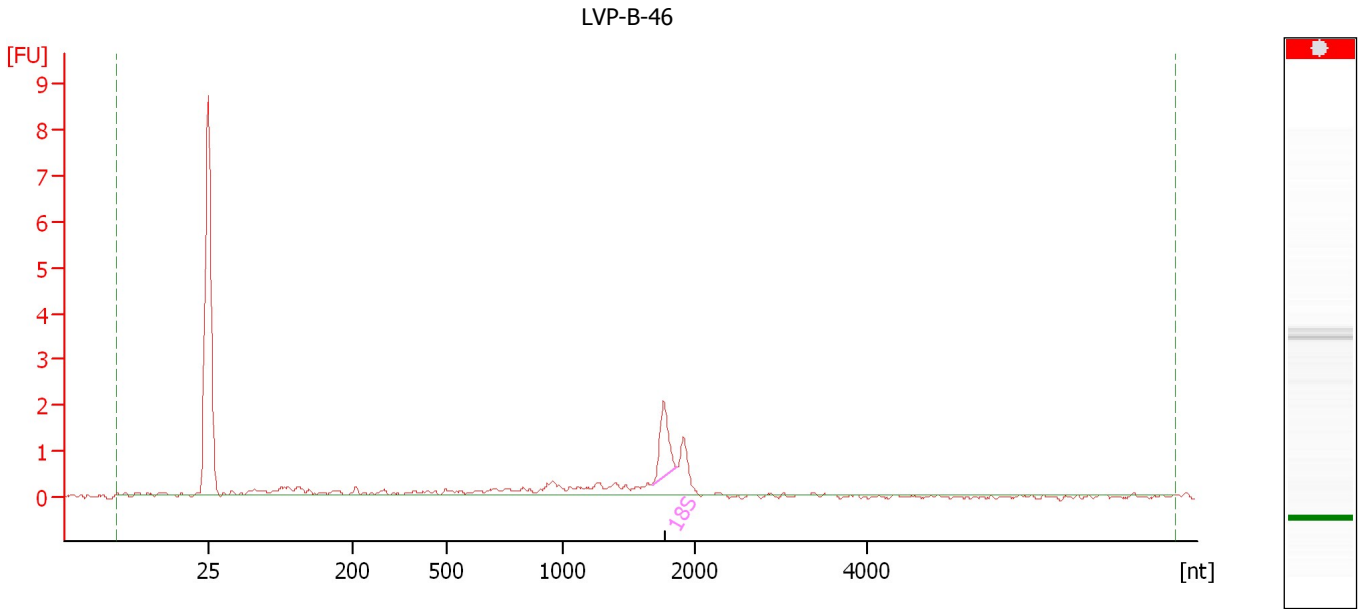
Fragment table for sample 9 : LVP-B-45

Name	Start Size [nt]	End Size [nt]	Area	% of total Area
18S	1,812	1,924	79.7	12.2
28S	3,069	3,341	2.7	0.4

Assay Class: Eukaryote Total RNA Nano
Data Path: C:\...ents and Settings\Bioanalyzer\2012-05-30\2012-05-30_005.xad

Created: 5/30/2012 4:50:44 PM
Modified: 5/30/2012 5:16:32 PM

Electropherogram Summary Continued ...



Overall Results for sample 10 : LVP-B-46

RNA Area:	10.1	RNA Integrity Number (RIN):	N/A (B.02.08)
RNA Concentration:	7 ng/μl	Result Flagging Color:	
rRNA Ratio [28s / 18s]:	0.0	Result Flagging Label:	RIN N/A

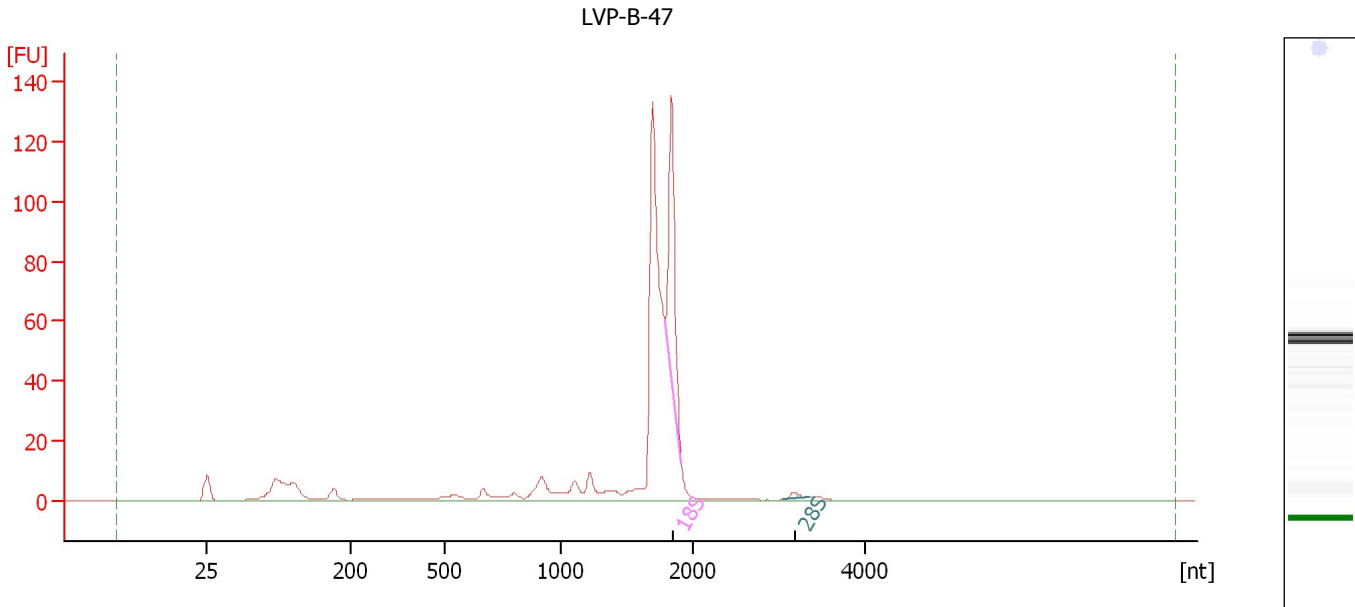
Fragment table for sample 10 : LVP-B-46

Name	Start Size [nt]	End Size [nt]	Area	% of total Area
18S	1,682	1,867	1.7	16.5

Assay Class: Eukaryote Total RNA Nano
Data Path: C:\...ents and Settings\Bioanalyzer\2012-05-30\2012-05-30_005.xad

Created: 5/30/2012 4:50:44 PM
Modified: 5/30/2012 5:16:32 PM

Electropherogram Summary Continued ...



Overall Results for sample 11 : LVP-B-47

RNA Area: 431.5 RNA Integrity Number (RIN): 5.4 (B.02.08, Anomaly Threshold(s) manually adapted)
RNA Concentration: 314 ng/μl
rRNA Ratio [28s / 18s]: 0.0
Result Flagging Color:
Result Flagging Label: RIN: 5.40

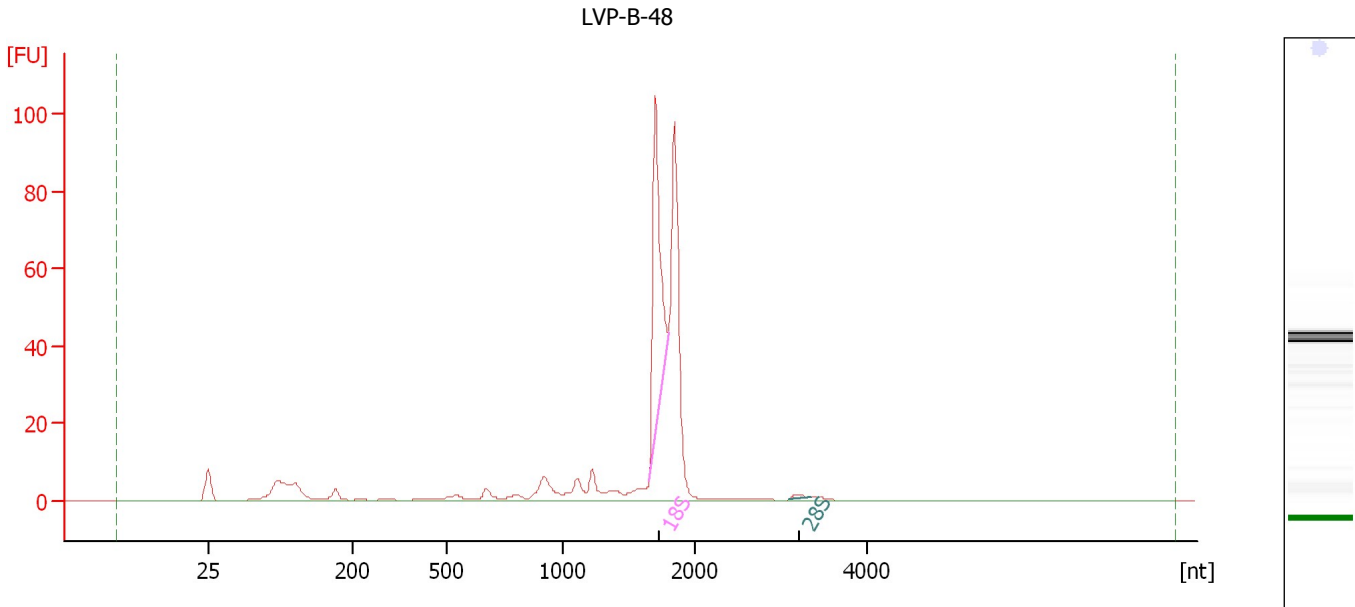
Fragment table for sample 11 : LVP-B-47

Name	Start Size [nt]	End Size [nt]	Area	% of total Area
18S	1,794	1,915	65.2	15.1
28S	3,050	3,360	2.1	0.5

Assay Class: Eukaryote Total RNA Nano
Data Path: C:\...ents and Settings\Bioanalyzer\2012-05-30\2012-05-30_005.xad

Created: 5/30/2012 4:50:44 PM
Modified: 5/30/2012 5:16:32 PM

Electropherogram Summary Continued ...



Overall Results for sample 12 : LVP-B-48

RNA Area: 315.4 RNA Integrity Number (RIN): 7.1 (B.02.08, Anomaly Threshold(s) manually adapted)
RNA Concentration: 229 ng/μl
rRNA Ratio [28s / 18s]: 0.0
Result Flagging Color:
Result Flagging Label: RIN: 7.10

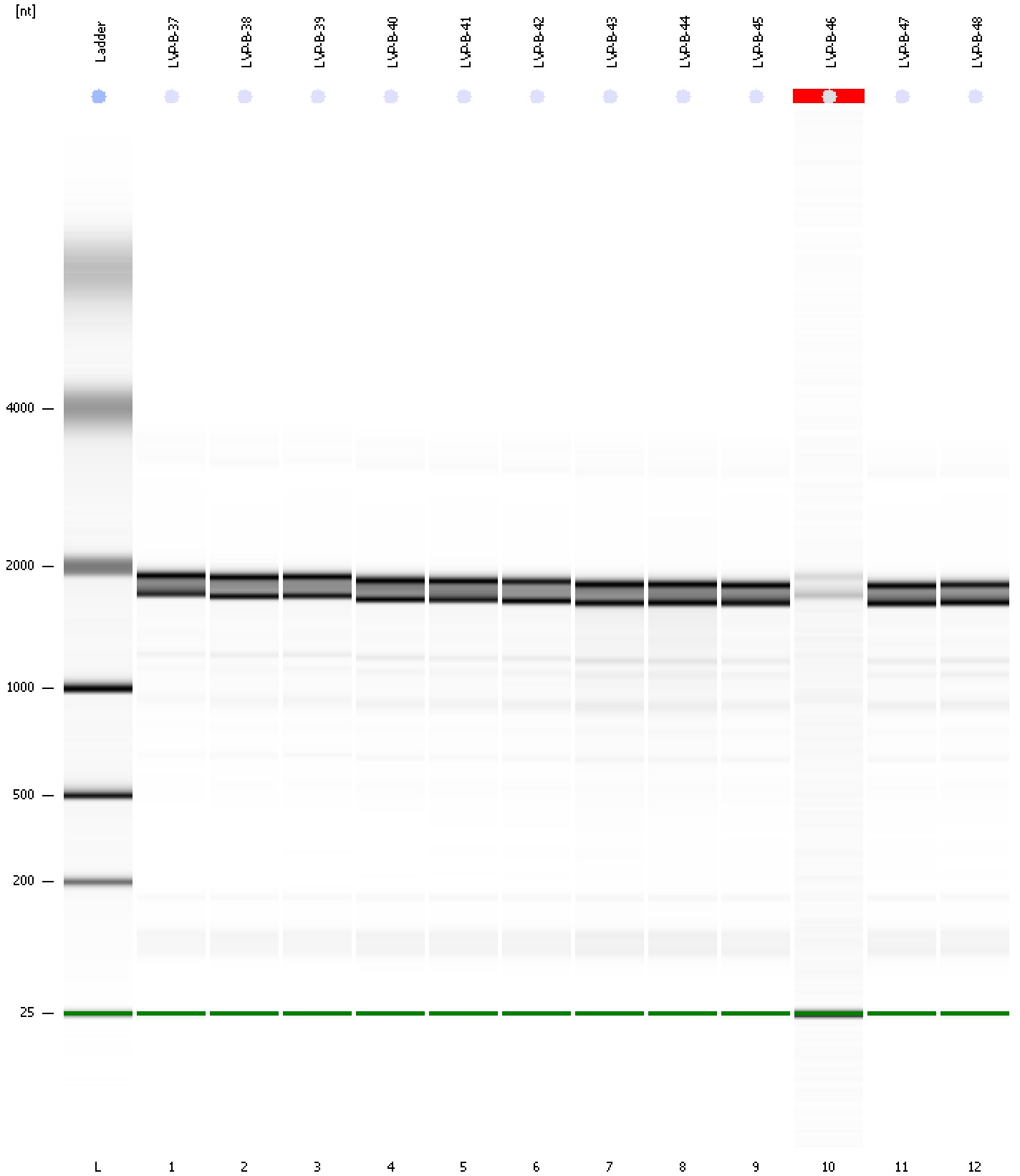
Fragment table for sample 12 : LVP-B-48

Name	Start Size [nt]	End Size [nt]	Area	% of total Area
18S	1,657	1,803	72.8	23.1
28S	3,085	3,346	1.1	0.3

Assay Class: Eukaryote Total RNA Nano
Data Path: C:\...ents and Settings\Bioanalyzer\2012-05-30\2012-05-30_005.xad

Created: 5/30/2012 4:50:44 PM
Modified: 5/30/2012 5:16:32 PM

Gel Image



Assay Class: Eukaryote Total RNA Nano
 Data Path: C:\...ents and Settings\Bioanalyzer\2012-05-30\2012-05-30_005.xad

Created: 5/30/2012 4:50:44 PM
 Modified: 5/30/2012 5:16:32 PM

Run Logbook

Description	Number	Source	Category	Sub Category	Time	Time Zone	User	Host
Run ended on port 1 (Number of wells acquired: 13)		Instrument	Run		5/30/2012 5:14:35 PM	(GMT --07:00) Pacific Standard Time	UC Davis	D8XSMGH1
Run started on port 1 (File: C:\Documents and Settings\Bioanalyzer\2012-05-30\2012-05-30_005.xad)		Instrument	Run		5/30/2012 4:50:50 PM	(GMT --07:00) Pacific Standard Time	UC Davis	D8XSMGH1
Product Number : G2938B		Instrument	Run		5/30/2012 4:50:50 PM	(GMT --07:00) Pacific Standard Time	UC Davis	D8XSMGH1
Name :		Instrument	Run		5/30/2012 4:50:50 PM	(GMT --07:00) Pacific Standard Time	UC Davis	D8XSMGH1
Vendor : Agilent Technologies		Instrument	Run		5/30/2012 4:50:50 PM	(GMT --07:00) Pacific Standard Time	UC Davis	D8XSMGH1
Serial# : DE13701086		Instrument	Run		5/30/2012 4:50:50 PM	(GMT --07:00) Pacific Standard Time	UC Davis	D8XSMGH1
Firmware : C.01.069		Instrument	Run		5/30/2012 4:50:50 PM	(GMT --07:00) Pacific Standard Time	UC Davis	D8XSMGH1
Cartridge : Electrode		Instrument	Run		5/30/2012 4:50:50 PM	(GMT --07:00) Pacific Standard Time	UC Davis	D8XSMGH1