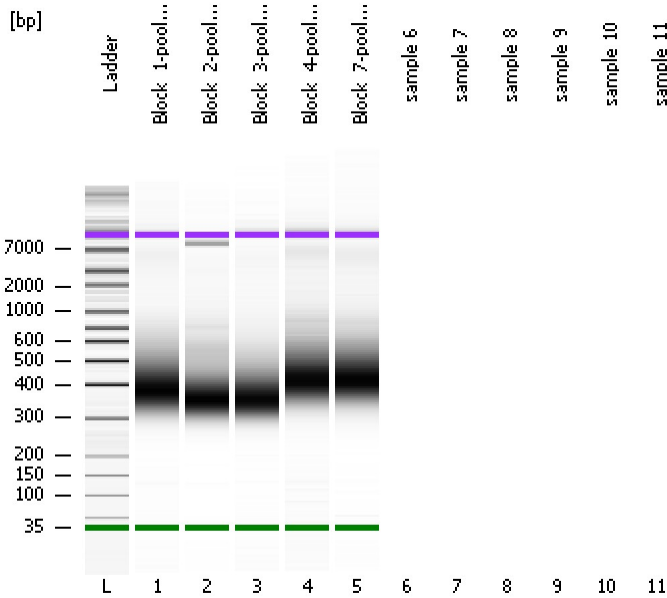


Assay Class: High Sensitivity DNA Assay
Data Path: C:\...ents and Settings\Bioanalyzer\2012-05-31\2012-05-31_003.xad

Created: 5/31/2012 11:24:35 AM
Modified: 5/31/2012 11:49:30 AM

Electrophoresis File Run Summary



Instrument Information:

Instrument Name: DE13701086 Firmware: C.01.069
Serial#: DE13701086 Type: G2938B

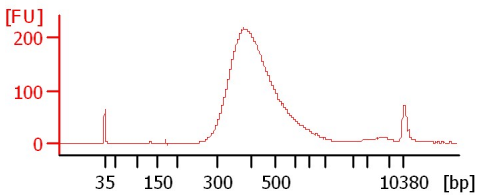
Assay Information:

Assay Origin Path: C:\Program Files\Agilent\2100 bioanalyzer\2100 expert\assays\dsDNA\High Sensitivity DNA.xsy
Assay Class: High Sensitivity DNA Assay
Version: 1.03
Assay Comments: Copyright © 2003-2010 Agilent Technologies

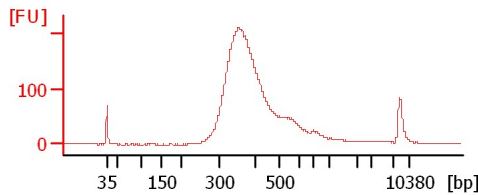
Chip Information:

Chip Lot #:
Reagent Kit Lot #:
Chip Comments:

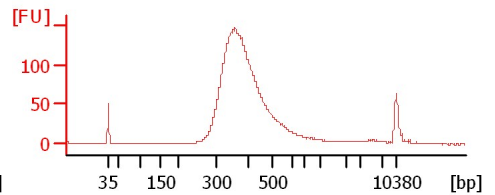
Block_1-pool_pure



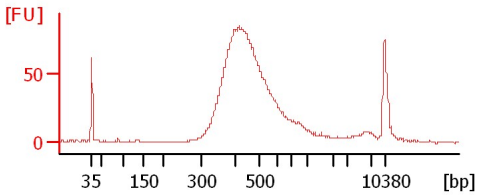
Block_2-pool_pure



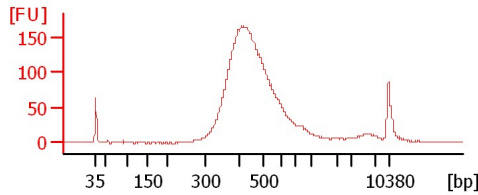
Block_3-pool_pure



Block_4-pool_pure



Block_7-pool_pure



Assay Class: High Sensitivity DNA Assay
 Data Path: C:\...ents and Settings\Bioanalyzer\2012-05-31\2012-05-31_003.xad

Created: 5/31/2012 11:24:35 AM
 Modified: 5/31/2012 11:49:30 AM

Electrophoresis File Run Summary (Chip Summary)

Sample Name	Sample Comment	Rest. Digest	Status	Observation	Result Label	Result Color
Block_1-pool_pure		<input type="checkbox"/>	✓			
Block_2-pool_pure		<input type="checkbox"/>	✓			
Block_3-pool_pure		<input type="checkbox"/>	✓			
Block_4-pool_pure		<input type="checkbox"/>	✓			
Block_7-pool_pure		<input type="checkbox"/>	✓			
sample 6		<input type="checkbox"/>				
sample 7		<input type="checkbox"/>				
sample 8		<input type="checkbox"/>				
sample 9		<input type="checkbox"/>				
sample 10		<input type="checkbox"/>				
sample 11		<input type="checkbox"/>				
Ladder		<input type="checkbox"/>	✓			

Chip Lot #

Reagent Kit Lot #

Chip Comments :

Assay Class: High Sensitivity DNA Assay
Data Path: C:\...ents and Settings\Bioanalyzer\2012-05-31\2012-05-31_003.xad

Created: 5/31/2012 11:24:35 AM
Modified: 5/31/2012 11:49:30 AM

Electrophoresis Assay Details

General Analysis Settings

Number of Available Sample and Ladder Wells (Max.) : 12
Minimum Visible Range [s] : 32
Maximum Visible Range [s] : 138
Start Analysis Time Range [s] : 33
End Analysis Time Range [s] : 137.5
Ladder Concentration [pg/μl] : 1950
Uses Standard Area for Ladder Fragments
Lower Marker Concentration [pg/μl] : 125
Upper Marker Concentration [pg/μl] : 75
Used Upper Marker for Quantitation
Standard Curve Fit is Point to Point
Show Data Aligned to Lower and Upper Marker

Integrator Settings

Integration Start Time [s] : 33.05
Integration End Time [s] : 137
Slope Threshold : 0.8
Height Threshold [FU] : 5
Area Threshold : 0.1
Width Threshold [s] : 0.6
Baseline Plateau [s] : 0.5

Filter Settings

Filter Width [s] : 0.5
Polynomial Order : 4

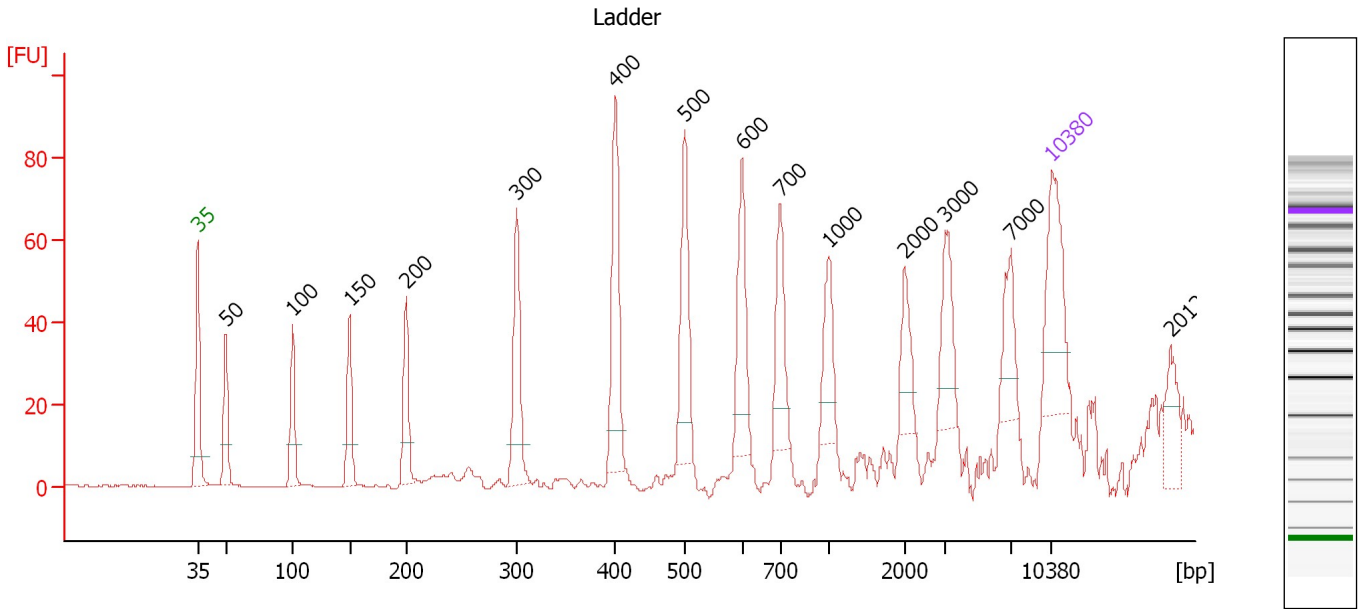
Ladder

Ladder Peak	Size	Area
1	35	160
2	50	210
3	100	208
4	150	221
5	200	242
6	300	270
7	400	305
8	500	306
9	600	336
10	700	321
11	1000	366
12	2000	413
13	3000	411
14	7000	400
15	10380	214

Assay Class: High Sensitivity DNA Assay
 Data Path: C:\...ents and Settings\Bioanalyzer\2012-05-31\2012-05-31_003.xad

Created: 5/31/2012 11:24:35 AM
 Modified: 5/31/2012 11:49:30 AM

Electropherogram Summary



Overall Results for Ladder

Noise: 0.1

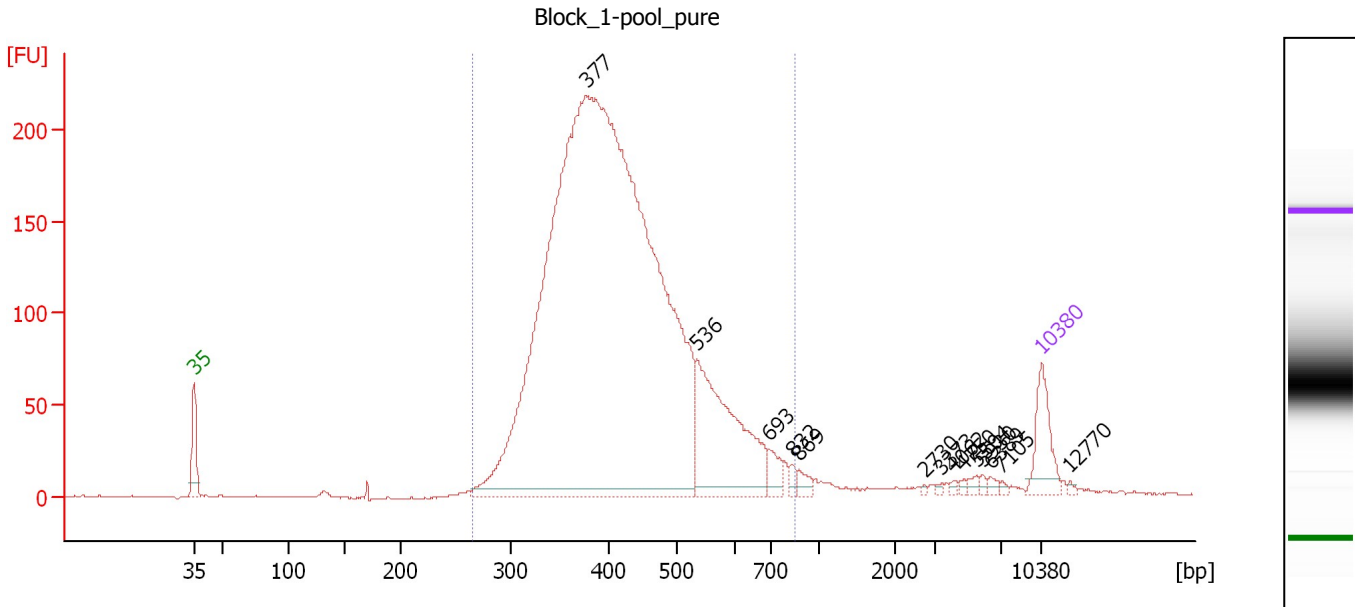
Peak table for Ladder

Peak	Size [bp]	Conc. [pg/μl]	Molarity [pmol/l]	Observations
1	35	125.00	5,411.3	Lower Marker
2	50	150.00	4,545.5	Ladder Peak
3	100	150.00	2,272.7	Ladder Peak
4	150	150.00	1,515.2	Ladder Peak
5	200	150.00	1,136.4	Ladder Peak
6	300	150.00	757.6	Ladder Peak
7	400	150.00	568.2	Ladder Peak
8	500	150.00	454.5	Ladder Peak
9	600	150.00	378.8	Ladder Peak
10	700	150.00	324.7	Ladder Peak
11	1,000	150.00	227.3	Ladder Peak
12	2,000	150.00	113.6	Ladder Peak
13	3,000	150.00	75.8	Ladder Peak
14	7,000	150.00	32.5	Ladder Peak
15	10,380	75.00	10.9	Upper Marker
16	20,125	0.00	0.0	

Assay Class: High Sensitivity DNA Assay
 Data Path: C:\...ents and Settings\Bioanalyzer\2012-05-31\2012-05-31_003.xad

Created: 5/31/2012 11:24:35 AM
 Modified: 5/31/2012 11:49:30 AM

Electropherogram Summary Continued ...



Overall Results for sample 1 : Block 1-pool pure

Number of peaks found: 14 Corr. Area 1: 3,479.2
 Noise: 0.5

Peak table for sample 1 : Block 1-pool pure

Peak	Size [bp]	Conc. [pg/μl]	Molarity [pmol/l]	Observations
1	35	125.00	5,411.3	Lower Marker
2	377	3,887.64	15,628.9	
3	536	395.19	1,117.4	
4	693	37.20	81.4	
5	832	12.95	23.6	
6	869	17.79	31.0	
7	2,730	2.68	1.5	
8	3,373	3.08	1.4	
9	4,062	4.06	1.5	
10	4,750	4.56	1.5	
11	5,504	8.97	2.5	
12	5,930	5.42	1.4	
13	6,389	6.93	1.6	
14	7,105	4.24	0.9	
15	10,380	75.00	10.9	Upper Marker
16	12,770	0.00	0.0	

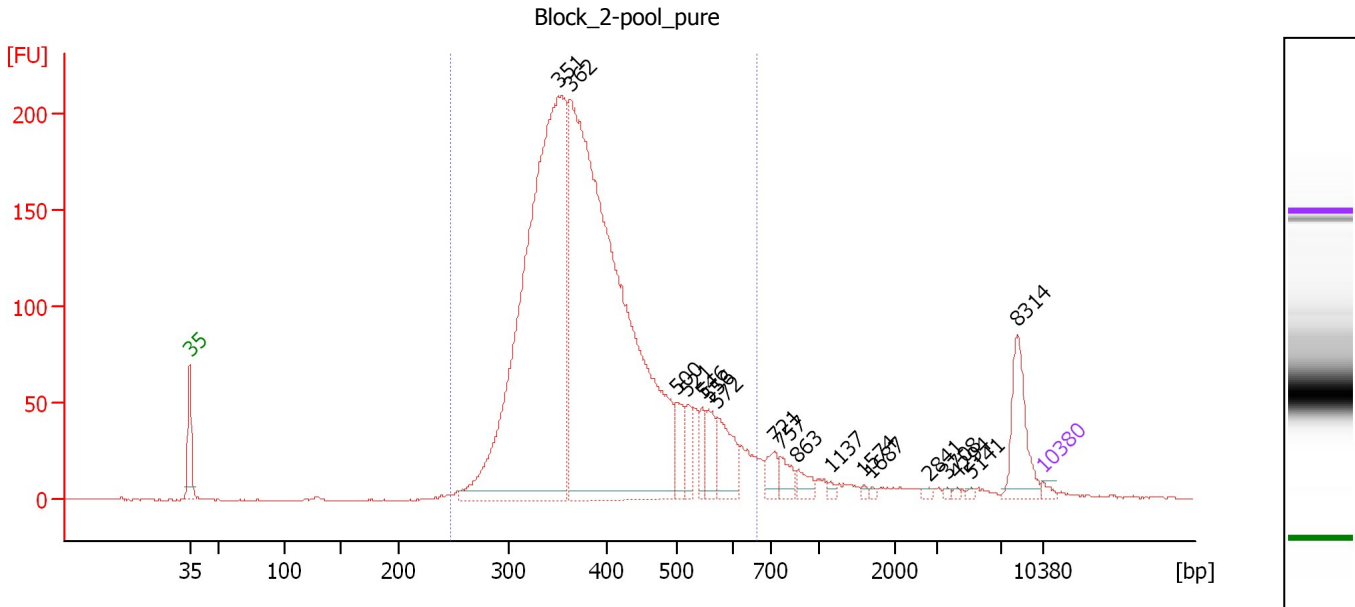
Region table for sample 1 : Block 1-pool pure

From [bp]	To [bp]	Average Size [bp]	Molarity [pmol/l]	Conc. [pg/μl]	Corr. Area	% of Total	Size distribution in CV [%]	Color
266	842	427	15,781.7	4,220.60	3,479.2	96	21.3	Blue

Assay Class: High Sensitivity DNA Assay
 Data Path: C:\...ents and Settings\Bioanalyzer\2012-05-31\2012-05-31_003.xad

Created: 5/31/2012 11:24:35 AM
 Modified: 5/31/2012 11:49:30 AM

Electropherogram Summary Continued ...



Overall Results for sample 2 : Block 2-pool pure

Number of peaks found: 18 Corr. Area 1: 3,012.7
 Noise: 0.4

Peak table for sample 2 : Block 2-pool pure

Peak	Size [bp]	Conc. [pg/μl]	Molarity [pmol/l]	Observations
1	35	125.00	5,411.3	Lower Marker
2	351	19,214.70	82,942.8	
3	362	22,609.76	94,552.9	
4	500	771.37	2,336.9	
5	521	539.45	1,570.2	
6	546	461.83	1,282.6	
7	556	673.36	1,835.8	
8	572	1,073.06	2,840.2	
9	721	413.74	869.5	
10	757	393.77	787.8	
11	863	289.64	508.6	
12	1,137	77.73	103.6	
13	1,574	49.51	47.6	
14	1,687	44.91	40.3	
15	2,841	57.83	30.8	
16	3,708	40.19	16.4	
17	4,294	48.38	17.1	
18	5,141	38.02	11.2	
19	8,314	1,155.76	210.6	
20	10,380	75.00	10.9	Upper Marker

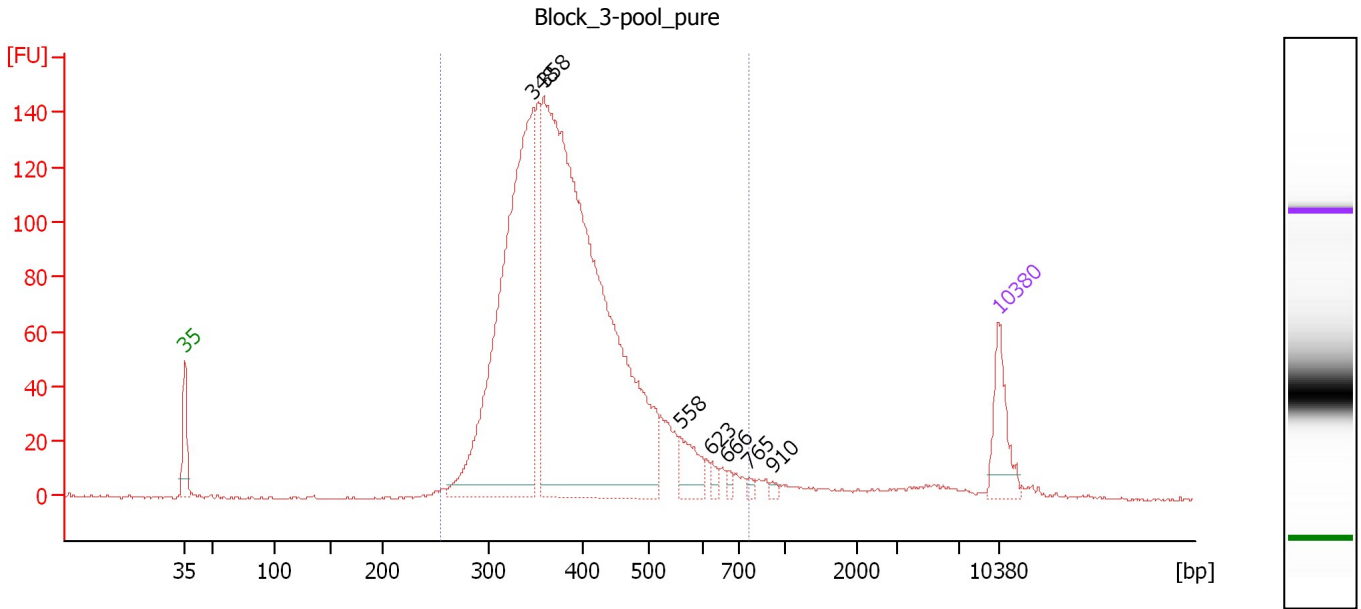
Region table for sample 2 : Block 2-pool pure

From [bp]	To [bp]	Average Size [bp]	Molarity [pmol/l]	Conc. [pg/μl]	Corr. Area	% of Total	Size distribution in CV [%]	Color
248	664	395	184,315.8	45,878.46	3,012.7	91	19.9	Blue

Assay Class: High Sensitivity DNA Assay
 Data Path: C:\...ents and Settings\Bioanalyzer\2012-05-31\2012-05-31_003.xad

Created: 5/31/2012 11:24:35 AM
 Modified: 5/31/2012 11:49:30 AM

Electropherogram Summary Continued ...



Overall Results for sample 3 : Block 3-pool pure

Number of peaks found: 7 Corr. Area 1: 2,093.7
 Noise: 0.5

Peak table for sample 3 : Block 3-pool pure

Peak	Size [bp]	Conc. [pg/μl]	Molarity [pmol/l]	Observations
1	35	125.00	5,411.3	Lower Marker
2	348	1,021.30	4,451.5	
3	358	1,818.88	7,690.6	
4	558	68.43	185.9	
5	623	12.49	30.4	
6	666	8.90	20.3	
7	765	7.20	14.3	
8	910	6.04	10.0	
9	10,380	75.00	10.9	Upper Marker

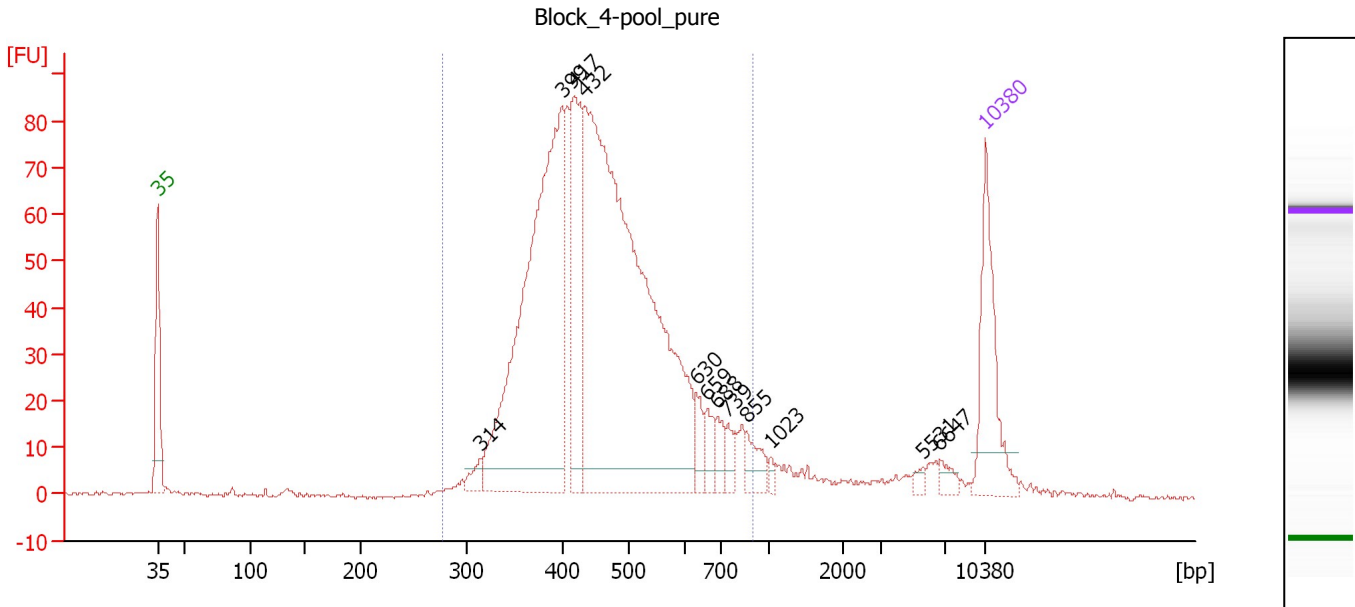
Region table for sample 3 : Block 3-pool pure

From [bp]	To [bp]	Average Size [bp]	Molarity [pmol/l]	Conc. [pg/μl]	Corr. Area	% of Total	Size distribution in CV [%]	Color
255	755	393	12,490.3	3,104.59	2,093.7	96	19.9	Blue

Assay Class: High Sensitivity DNA Assay
 Data Path: C:\...ents and Settings\Bioanalyzer\2012-05-31\2012-05-31_003.xad

Created: 5/31/2012 11:24:35 AM
 Modified: 5/31/2012 11:49:30 AM

Electropherogram Summary Continued ...



Overall Results for sample 4 : Block 4-pool pure

Number of peaks found: 12 Corr. Area 1: 1,329.2
 Noise: 0.4

Peak table for sample 4 : Block 4-pool pure

Peak	Size [bp]	Conc. [pg/μl]	Molarity [pmol/l]	Observations
1	35	125.00	5,411.3	Lower Marker
2	314	12.74	61.4	
3	399	485.43	1,843.1	
4	417	139.65	507.5	
5	432	734.54	2,577.0	
6	630	20.93	50.3	
7	659	19.97	45.9	
8	688	15.48	34.1	
9	739	13.47	27.6	
10	855	21.78	38.6	
11	1,023	4.63	6.9	
12	5,531	4.76	1.3	
13	6,647	8.75	2.0	
14	10,380	75.00	10.9	Upper Marker

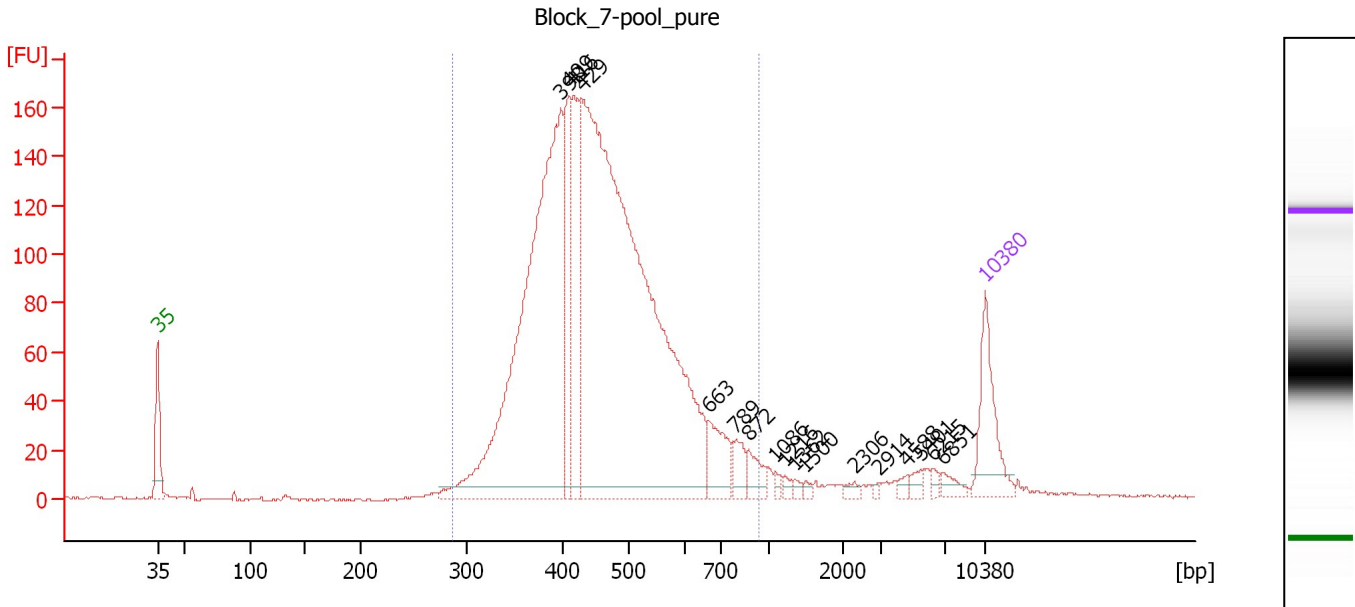
Region table for sample 4 : Block 4-pool pure

From [bp]	To [bp]	Average Size [bp]	Molarity [pmol/l]	Conc. [pg/μl]	Corr. Area	% of Total	Size distribution in CV [%]	Color
277	892	465	5,338.0	1,550.11	1,329.2	91	22.2	Blue

Assay Class: High Sensitivity DNA Assay
 Data Path: C:\...ents and Settings\Bioanalyzer\2012-05-31\2012-05-31_003.xad

Created: 5/31/2012 11:24:35 AM
 Modified: 5/31/2012 11:49:30 AM

Electropherogram Summary Continued ...



Overall Results for sample 5 : Block 7-pool pure

Number of peaks found: 17 Corr. Area 1: 2,485.1
 Noise: 0.5

Peak table for sample 5 : Block 7-pool pure

Peak	Size [bp]	Conc. [pg/μl]	Molarity [pmol/l]	Observations
1	35	125.00	5,411.3	Lower Marker
2	398	838.92	3,195.8	
3	409	137.47	508.8	
4	416	169.44	616.9	
5	429	1,359.43	4,803.8	
6	663	60.30	137.8	
7	789	26.78	51.4	
8	872	26.56	46.2	
9	1,086	5.61	7.8	
10	1,216	5.59	7.0	
11	1,362	5.22	5.8	
12	1,500	4.24	4.3	
13	2,306	6.34	4.2	
14	2,914	2.68	1.4	
15	4,588	6.84	2.3	
16	5,401	8.18	2.3	
17	6,215	6.63	1.6	
18	6,851	11.97	2.6	
19	10,380	75.00	10.9	Upper Marker

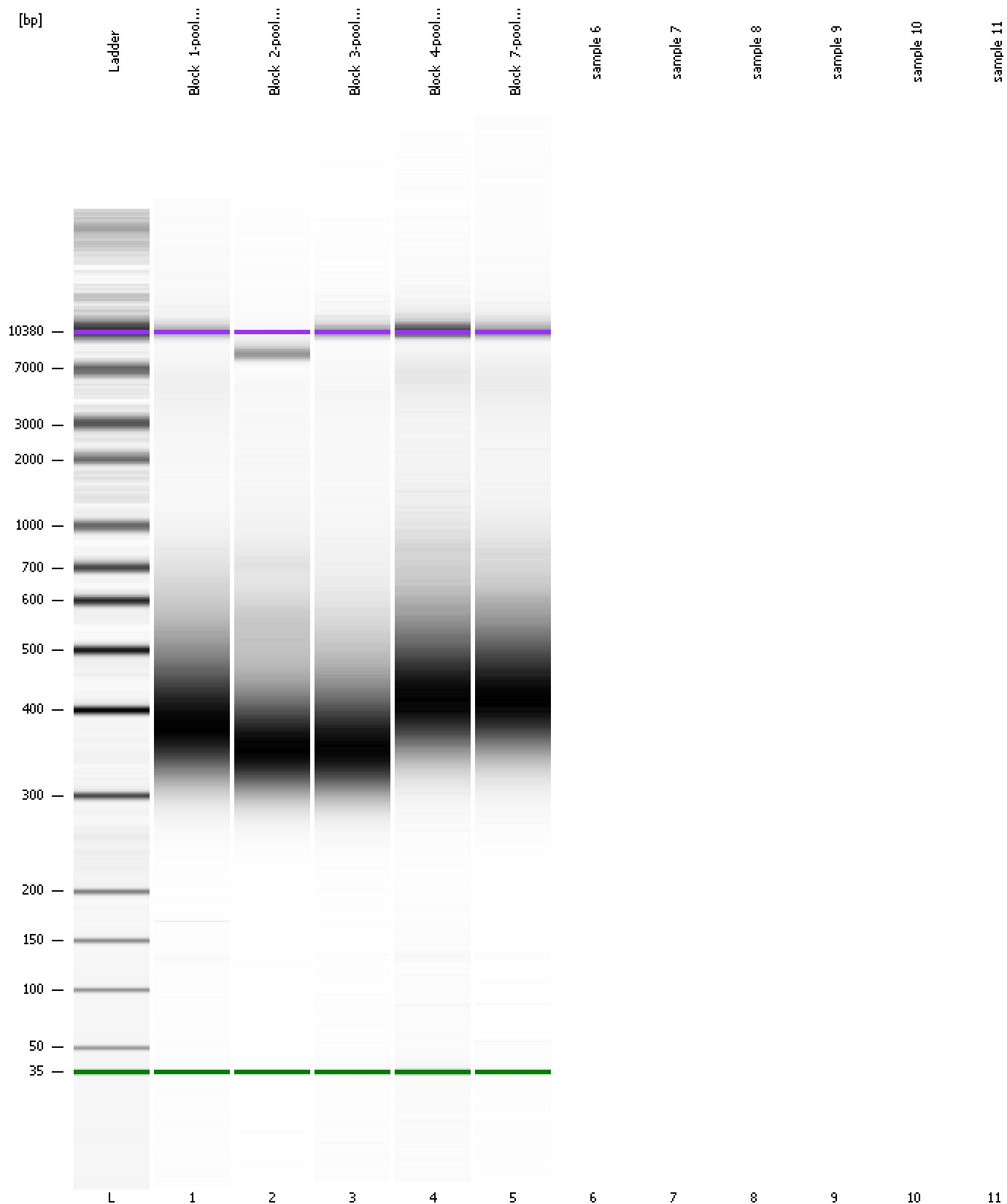
Region table for sample 5 : Block 7-pool pure

From [bp]	To [bp]	Average Size [bp]	Molarity [pmol/l]	Conc. [pg/μl]	Corr. Area	% of Total	Size distribution in CV [%]	Color
288	931	464	8,779.2	2,551.77	2,485.1	95	22.0	Blue

Assay Class: High Sensitivity DNA Assay
Data Path: C:\...ents and Settings\Bioanalyzer\2012-05-31\2012-05-31_003.xad

Created: 5/31/2012 11:24:35 AM
Modified: 5/31/2012 11:49:30 AM

Gel Image



Assay Class: High Sensitivity DNA Assay
Data Path: C:\...ents and Settings\Bioanalyzer\2012-05-31\2012-05-31_003.xad

Created: 5/31/2012 11:24:35 AM
Modified: 5/31/2012 11:49:30 AM

Invalid Samples

Sample 6 has not been run, no results available.

Sample 7 has not been run, no results available.

Sample 8 has not been run, no results available.

Sample 9 has not been run, no results available.

Sample 10 has not been run, no results available.

Sample 11 has not been run, no results available.

Assay Class: High Sensitivity DNA Assay
 Data Path: C:\...ents and Settings\Bioanalyzer\2012-05-31\2012-05-31_003.xad

Created: 5/31/2012 11:24:35 AM
 Modified: 5/31/2012 11:49:30 AM

Run Logbook

Description	Number	Source	Category	Sub Category	Time	Time Zone	User	Host
Run ended on port 1 (Number of wells acquired: 6)		Instrument	Run		5/31/2012 11:48:44 AM	(GMT --07:00) Pacific Standard Time	UC Davis	D8XSMGH1
Run started on port 1 (File: C:\Documents and Settings\Bioanalyzer\2012-05-31\2012-05-31_003.xad)		Instrument	Run		5/31/2012 11:24:41 AM	(GMT --07:00) Pacific Standard Time	UC Davis	D8XSMGH1
Product Number : G2938B		Instrument	Run		5/31/2012 11:24:41 AM	(GMT --07:00) Pacific Standard Time	UC Davis	D8XSMGH1
Name :		Instrument	Run		5/31/2012 11:24:41 AM	(GMT --07:00) Pacific Standard Time	UC Davis	D8XSMGH1
Vendor : Agilent Technologies		Instrument	Run		5/31/2012 11:24:41 AM	(GMT --07:00) Pacific Standard Time	UC Davis	D8XSMGH1
Serial# : DE13701086		Instrument	Run		5/31/2012 11:24:41 AM	(GMT --07:00) Pacific Standard Time	UC Davis	D8XSMGH1
Firmware : C.01.069		Instrument	Run		5/31/2012 11:24:41 AM	(GMT --07:00) Pacific Standard Time	UC Davis	D8XSMGH1
Cartridge : Electrode		Instrument	Run		5/31/2012 11:24:41 AM	(GMT --07:00) Pacific Standard Time	UC Davis	D8XSMGH1