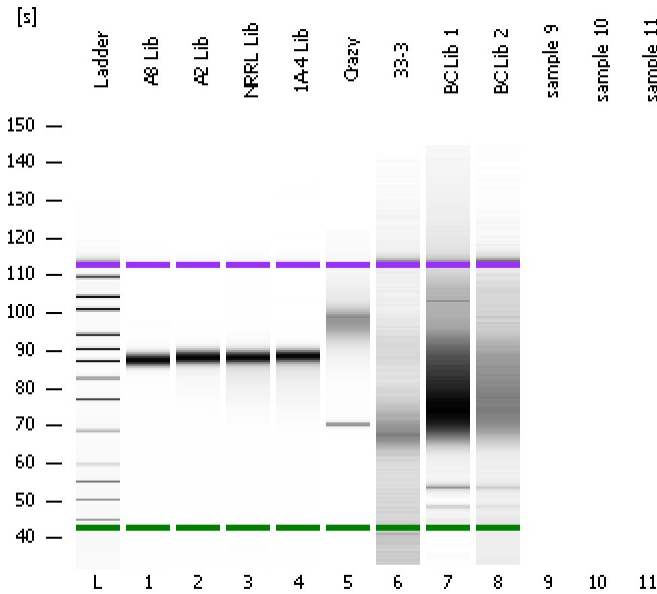


Assay Class: High Sensitivity DNA Assay
Data Path: C:\...ents and Settings\Bioanalyzer\2012-05-31\2012-05-31_005.xad

Created: 5/31/2012 3:10:42 PM
Modified: 5/31/2012 5:15:51 PM

Electrophoresis File Run Summary



Instrument Information:

Instrument Name: DE13701086 Firmware: C.01.069
Serial#: DE13701086 Type: G2938B

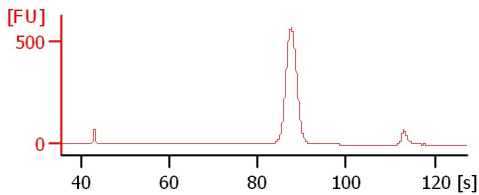
Assay Information:

Assay Origin Path: C:\Program Files\Agilent\2100 bioanalyzer\2100 expert\assays\dsDNA\High Sensitivity DNA.xsy
Assay Class: High Sensitivity DNA Assay
Version: 1.03
Assay Comments: Copyright © 2003-2010 Agilent Technologies

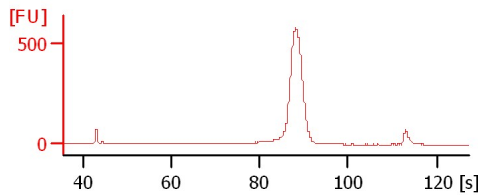
Chip Information:

Chip Lot #:
Reagent Kit Lot #:
Chip Comments:

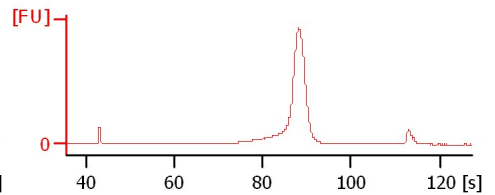
A8 Lib



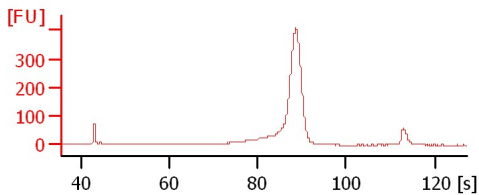
A2 Lib



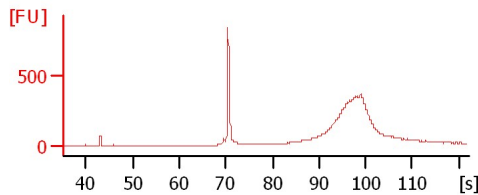
NRRL Lib



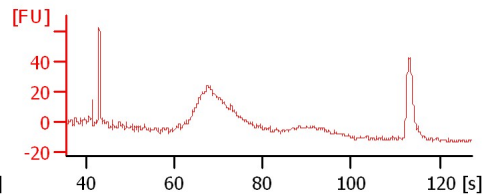
1A-4 Lib



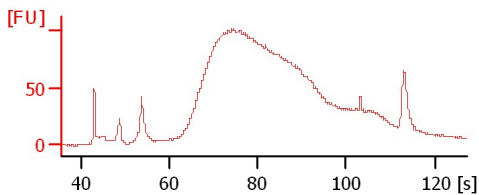
Crazy



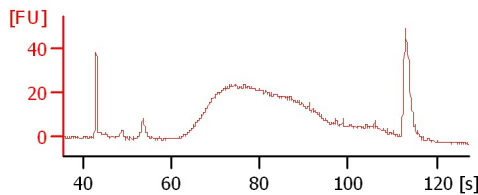
33-3



BC Lib 1



BC Lib 2



Assay Class: High Sensitivity DNA Assay
 Data Path: C:\...ents and Settings\Bioanalyzer\2012-05-31\2012-05-31_005.xad

Created: 5/31/2012 3:10:42 PM
 Modified: 5/31/2012 5:15:51 PM

Electrophoresis File Run Summary (Chip Summary)

Sample Name	Sample Comment	Rest. Digest	Status	Observation	Result Label	Result Color
A8 Lib		<input type="checkbox"/>	✓			
A2 Lib		<input type="checkbox"/>	✓			
NRRL Lib		<input type="checkbox"/>	✓			
1A-4 Lib		<input type="checkbox"/>	✓			
Crazy		<input type="checkbox"/>	✓			
33-3		<input type="checkbox"/>	✓			
BC Lib 1		<input type="checkbox"/>	✓			
BC Lib 2		<input type="checkbox"/>	✓			
sample 9		<input type="checkbox"/>				
sample 10		<input type="checkbox"/>				
sample 11		<input type="checkbox"/>				
Ladder		<input type="checkbox"/>	✓			

Chip Lot #

Reagent Kit Lot #

Chip Comments :

Assay Class: High Sensitivity DNA Assay
Data Path: C:\...ents and Settings\Bioanalyzer\2012-05-31\2012-05-31_005.xad

Created: 5/31/2012 3:10:42 PM
Modified: 5/31/2012 5:15:51 PM

Electrophoresis Assay Details

General Analysis Settings

Number of Available Sample and Ladder Wells (Max.) : 12
Minimum Visible Range [s] : 32
Maximum Visible Range [s] : 138
Start Analysis Time Range [s] : 33
End Analysis Time Range [s] : 137.5
Ladder Concentration [pg/μl] : 1950
Uses Standard Area for Ladder Fragments
Lower Marker Concentration [pg/μl] : 125
Upper Marker Concentration [pg/μl] : 75
Used Upper Marker for Quantitation
Standard Curve Fit is Point to Point
Show Data Aligned to Lower and Upper Marker

Integrator Settings

Integration Start Time [s] : 33.05
Integration End Time [s] : 137
Slope Threshold : 0.8
Height Threshold [FU] : 5
Area Threshold : 0.1
Width Threshold [s] : 0.6
Baseline Plateau [s] : 0.5

Filter Settings

Filter Width [s] : 0.5
Polynomial Order : 4

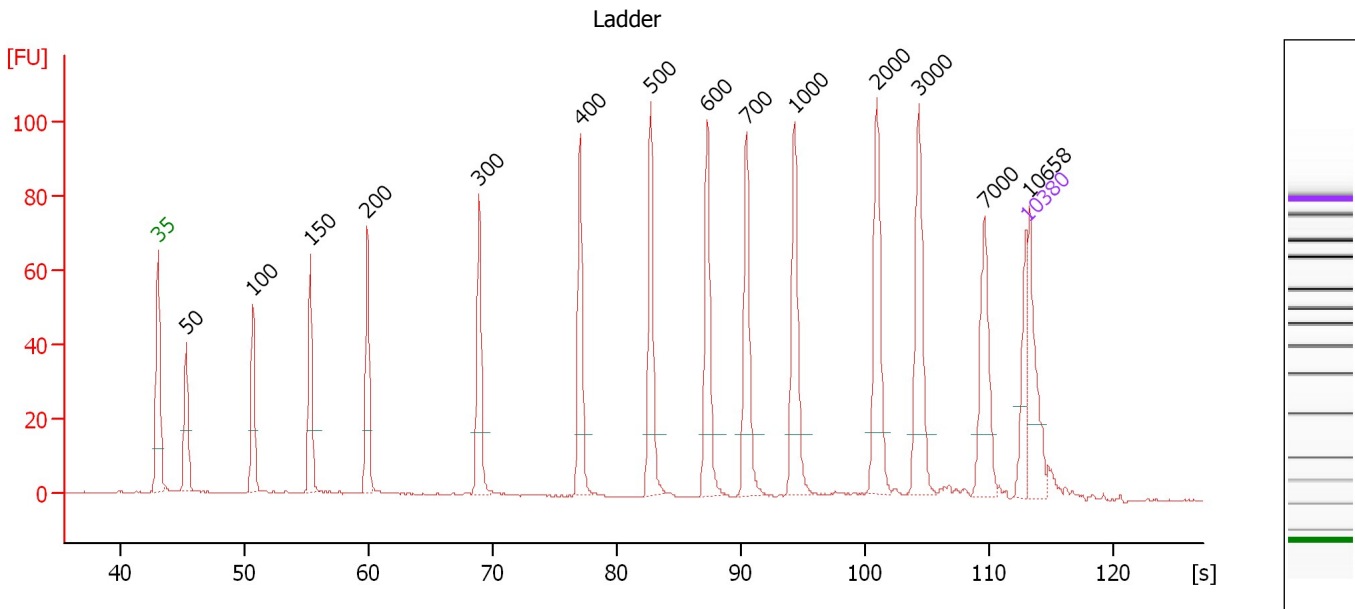
Ladder

Ladder Peak	Size	Area
1	35	160
2	50	210
3	100	208
4	150	221
5	200	242
6	300	270
7	400	305
8	500	306
9	600	336
10	700	321
11	1000	366
12	2000	413
13	3000	411
14	7000	400
15	10380	214

Assay Class: High Sensitivity DNA Assay
 Data Path: C:\...ents and Settings\Bioanalyzer\2012-05-31\2012-05-31_005.xad

Created: 5/31/2012 3:10:42 PM
 Modified: 5/31/2012 5:15:51 PM

Electropherogram Summary



Overall Results for Ladder

Noise: 0.1

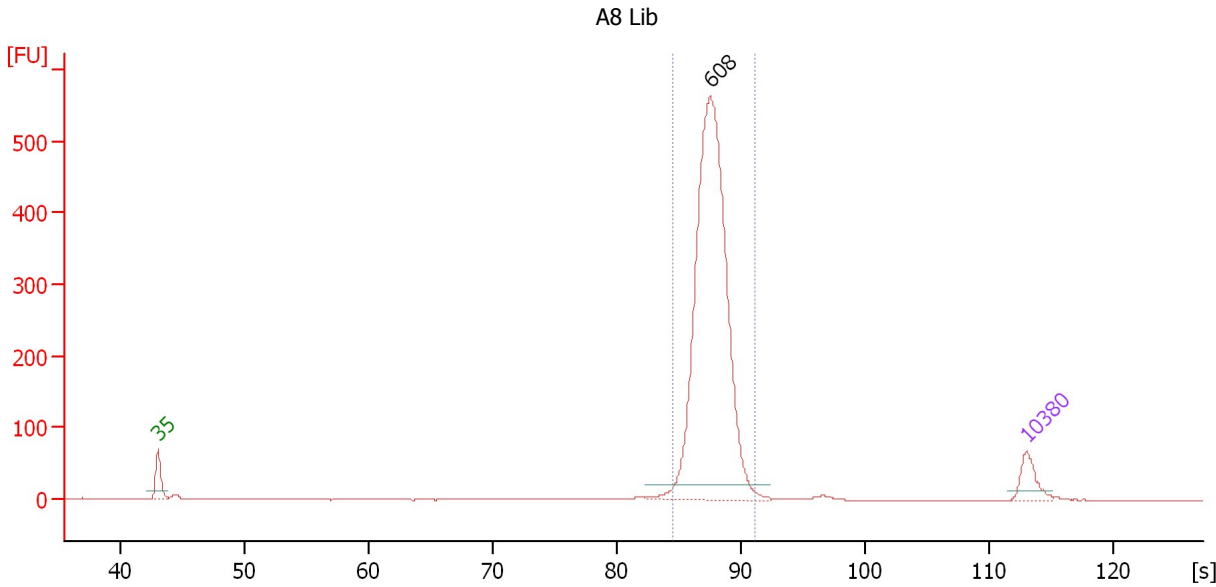
Peak table for Ladder

Peak	Size [bp]	Conc. [pg/μl]	Molarity [pmol/l]	Observations
1	35	125.00	5,411.3	Lower Marker
2	50	150.00	4,545.5	Ladder Peak
3	100	150.00	2,272.7	Ladder Peak
4	150	150.00	1,515.2	Ladder Peak
5	200	150.00	1,136.4	Ladder Peak
6	300	150.00	757.6	Ladder Peak
7	400	150.00	568.2	Ladder Peak
8	500	150.00	454.5	Ladder Peak
9	600	150.00	378.8	Ladder Peak
10	700	150.00	324.7	Ladder Peak
11	1,000	150.00	227.3	Ladder Peak
12	2,000	150.00	113.6	Ladder Peak
13	3,000	150.00	75.8	Ladder Peak
14	7,000	150.00	32.5	Ladder Peak
15	10,380	75.00	10.9	Upper Marker
16	10,658	0.00	0.0	

Assay Class: High Sensitivity DNA Assay
 Data Path: C:\...ents and Settings\Bioanalyzer\2012-05-31\2012-05-31_005.xad

Created: 5/31/2012 3:10:42 PM
 Modified: 5/31/2012 5:15:51 PM

Electropherogram Summary Continued ...



Setpoint Deviations for sample 1 : A8 Lib

Height Threshold [FU] : 20

Overall Results for sample 1 : A8 Lib

Number of peaks found: 1 Corr. Area 1: 1,921.5
 Noise: 0.2

Peak table for sample 1 : A8 Lib

Peak	Size [bp]	Conc. [pg/μl]	Molarity [pmol/l]	Observations
1	35	125.00	5,411.3	Lower Marker
2	608	2,079.36	5,181.6	
3	10,380	75.00	10.9	Upper Marker

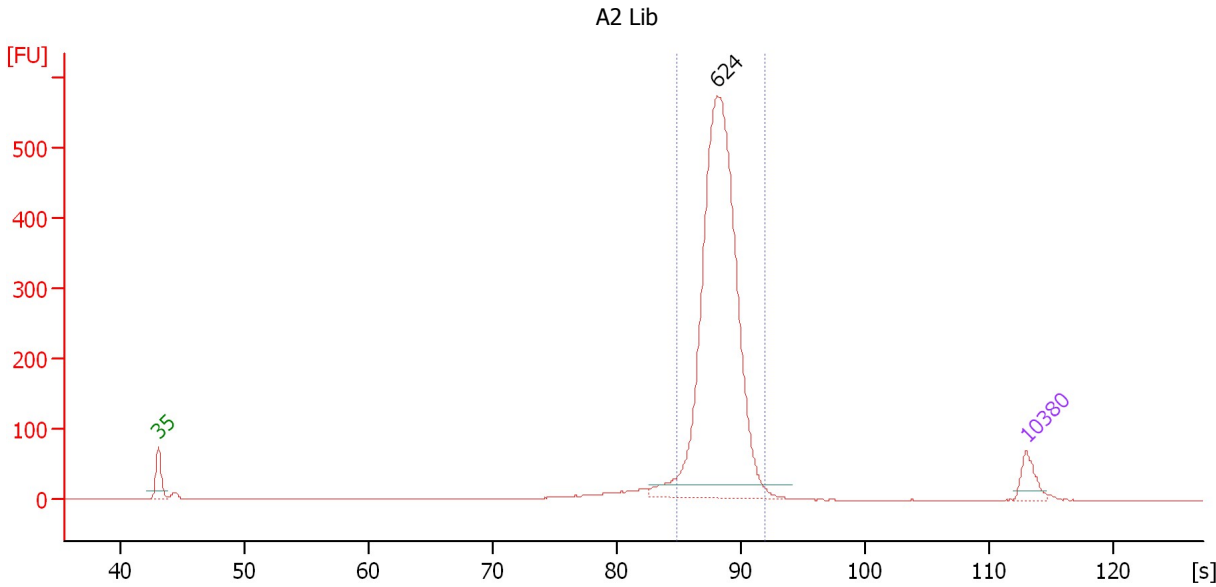
Region table for sample 1 : A8 Lib

From [s]	To [s]	Average Size [bp]	Molarity [pmol/l]	Conc. [pg/μl]	Corr. Area % of Total	Size distribution in CV [%]	Color
84.54	91.05	614	5,154.5	2,082.59	1,921.5 95	5.3	Blue

Assay Class: High Sensitivity DNA Assay
 Data Path: C:\...ents and Settings\Bioanalyzer\2012-05-31\2012-05-31_005.xad

Created: 5/31/2012 3:10:42 PM
 Modified: 5/31/2012 5:15:51 PM

Electropherogram Summary Continued ...



Setpoint Deviations for sample 2 : A2 Lib

Height Threshold [FU] : 20

Overall Results for sample 2 : A2 Lib

Number of peaks found: 1 Corr. Area 1: 2,138.6
 Noise: 0.1

Peak table for sample 2 : A2 Lib

Peak	Size [bp]	Conc. [pg/μl]	Molarity [pmol/l]	Observations
1	35	125.00	5,411.3	Lower Marker
2	624	2,526.77	6,139.7	
3	10,380	75.00	10.9	Upper Marker

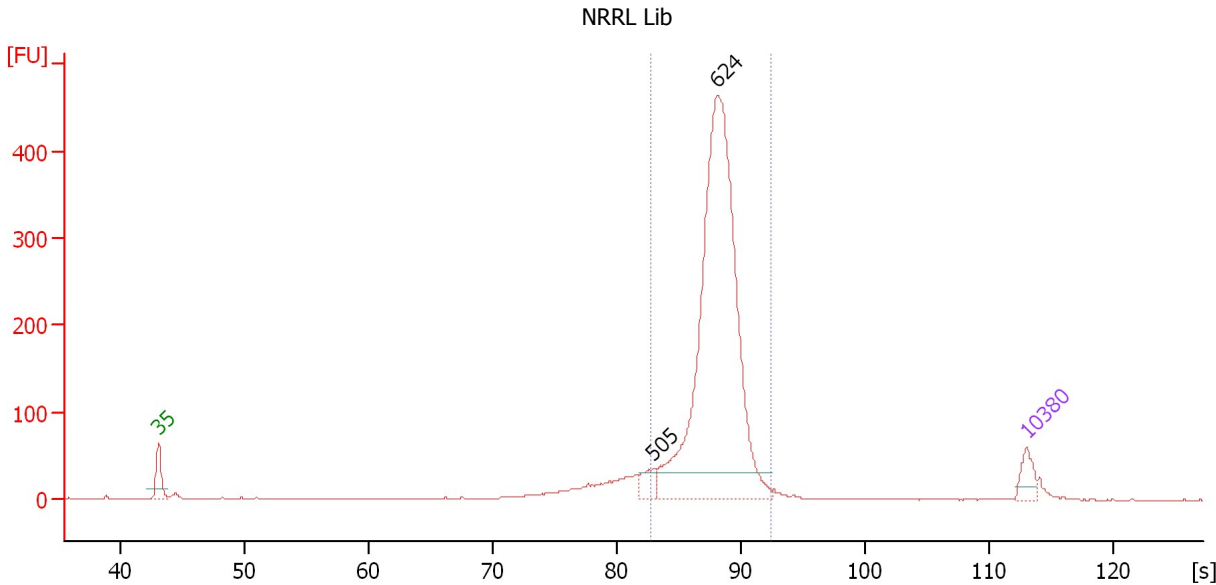
Region table for sample 2 : A2 Lib

From [s]	To [s]	Average Size [bp]	Molarity [pmol/l]	Conc. [pg/μl]	Corr. Area % of Total	Size distribution in CV [%]	Color
84.75	91.93	634	5,963.5	2,487.47	2,138.6 91	6.4	Blue

Assay Class: High Sensitivity DNA Assay
 Data Path: C:\...ents and Settings\Bioanalyzer\2012-05-31\2012-05-31_005.xad

Created: 5/31/2012 3:10:42 PM
 Modified: 5/31/2012 5:15:51 PM

Electropherogram Summary Continued ...



Setpoint Deviations for sample 3 : NRRL Lib

Height Threshold [FU] : 30

Overall Results for sample 3 : NRRL Lib

Number of peaks found: 2 Corr. Area 1: 1,831.4
 Noise: 0.1

Peak table for sample 3 : NRRL Lib

Peak	Size [bp]	Conc. [pg/μl]	Molarity [pmol/l]	Observations
1	35	125.00	5,411.3	Lower Marker
2	505	91.31	274.2	
3	624	2,816.20	6,840.4	
4	10,380	75.00	10.9	Upper Marker

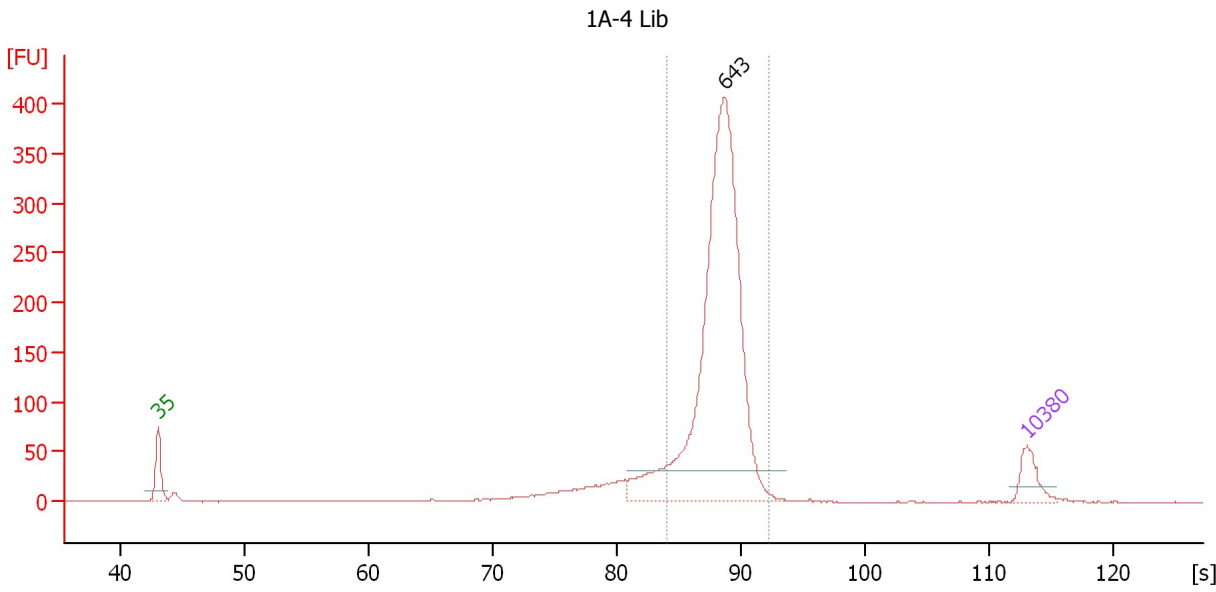
Region table for sample 3 : NRRL Lib

From [s]	To [s]	Average Size [bp]	Molarity [pmol/l]	Conc. [pg/μl]	Corr. Area % of Total	Size distribution in CV [%]	Color
82.79	92.47	627	7,033.6	2,894.85	1,831.4 85	7.9	Blue

Assay Class: High Sensitivity DNA Assay
 Data Path: C:\...ents and Settings\Bioanalyzer\2012-05-31\2012-05-31_005.xad

Created: 5/31/2012 3:10:42 PM
 Modified: 5/31/2012 5:15:51 PM

Electropherogram Summary Continued ...



Setpoint Deviations for sample 4 : 1A-4 Lib

Height Threshold [FU] : 30

Overall Results for sample 4 : 1A-4 Lib

Number of peaks found: 1 Corr. Area 1: 1,505.7
 Noise: 0.2

Peak table for sample 4 : 1A-4 Lib

Peak	Size [bp]	Conc. [pg/μl]	Molarity [pmol/l]	Observations
1	35	125.00	5,411.3	Lower Marker
2	643	1,975.40	4,656.4	
3	10,380	75.00	10.9	Upper Marker

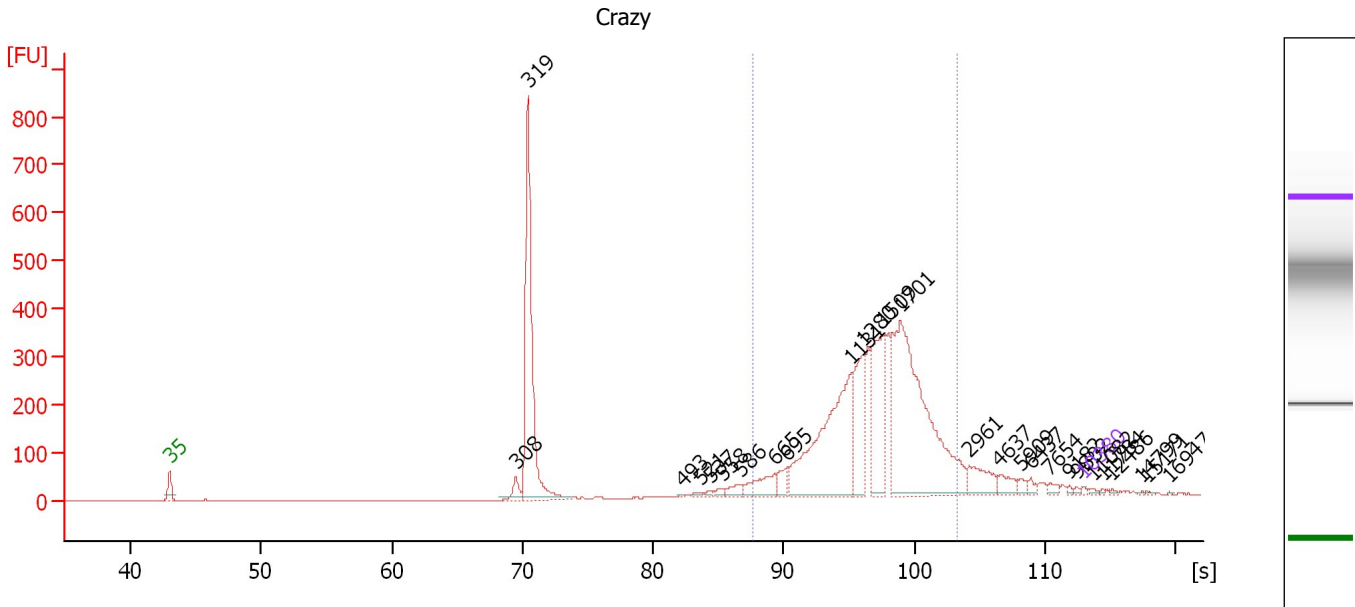
Region table for sample 4 : 1A-4 Lib

From [s]	To [s]	Average Size [bp]	Molarity [pmol/l]	Conc. [pg/μl]	Corr. Area % of Total	Size distribution in CV [%]	Color
84.06	92.17	637	4,449.2	1,862.07	1,505.7 81	7.2	Blue

Assay Class: High Sensitivity DNA Assay
 Data Path: C:\...ents and Settings\Bioanalyzer\2012-05-31\2012-05-31_005.xad

Created: 5/31/2012 3:10:42 PM
 Modified: 5/31/2012 5:15:51 PM

Electropherogram Summary Continued ...



Overall Results for sample 5 : Crazy

Number of peaks found: 26 Corr. Area 1: 3,166.7
 Noise: 0.2

Peak table for sample 5 : Crazy

Peak	Size [bp]	Conc. [pg/μl]	Molarity [pmol/l]	Observations
1	35	125.00	5,411.3	Lower Marker
2	308	751.48	3,695.7	
3	319	11,696.13	55,523.0	
4	493	61.31	188.6	
5	521	144.77	420.8	
6	537	159.10	448.5	
7	558	244.17	662.8	
8	586	500.50	1,293.8	
9	665	1,537.33	3,502.4	
10	695	788.51	1,718.5	
11	1,131	9,615.97	12,879.9	
12	1,280	3,180.63	3,765.4	
13	1,509	4,518.44	4,536.8	
14	1,701	13,159.75	11,721.6	
15	2,961	1,319.04	674.9	
16	4,637	609.93	199.3	
17	5,909	299.98	76.9	
18	6,437	224.53	52.9	
19	7,654	232.03	45.9	
20	9,182	90.20	14.9	
21	9,802	78.71	12.2	
22	10,380	75.00	10.9	Upper Marker
23	11,082	0.00	0.0	
24	11,784	0.00	0.0	
25	12,486	0.00	0.0	
26	14,799	0.00	0.0	

Assay Class: High Sensitivity DNA Assay
Data Path: C:\...ents and Settings\Bioanalyzer\2012-05-31\2012-05-31_005.xad

Created: 5/31/2012 3:10:42 PM
Modified: 5/31/2012 5:15:51 PM

Electropherogram Summary Continued ...**... Peak table for sample 5 : Crazy**

Peak	Size [bp]	Conc. [pg/μl]	Molarity [pmol/l]	Observations
27	15,171	0.00	0.0	
28	16,947	0.00	0.0	

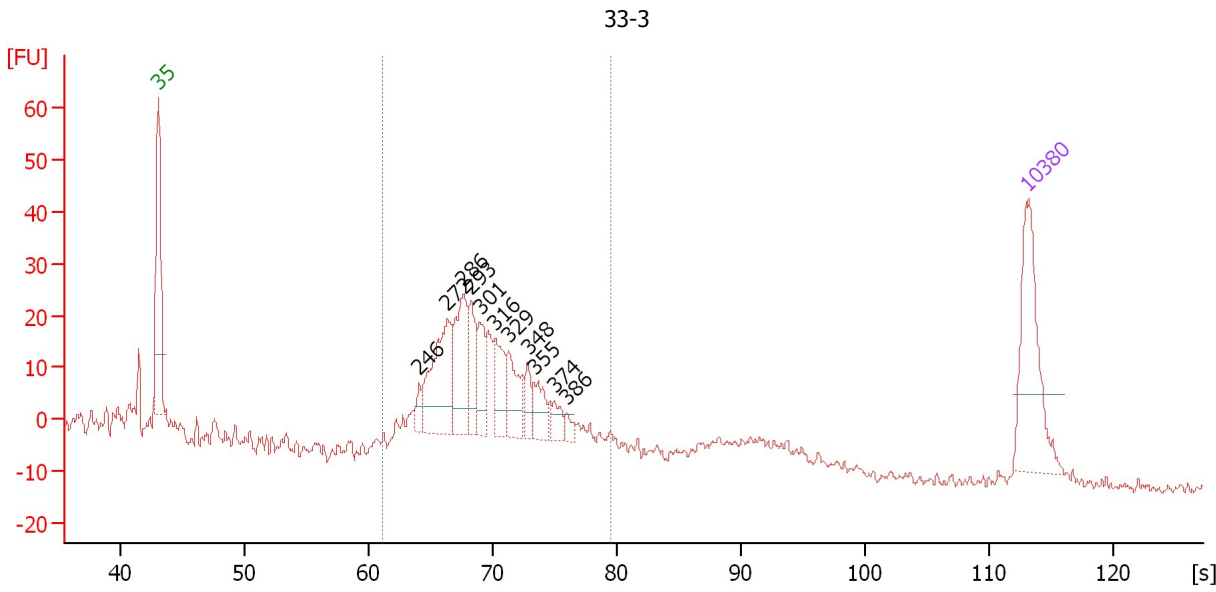
Region table for sample 5 : Crazy

From [s]	To [s]	Average Size [bp]	Molarity [pmol/l]	Conc. [pg/μl]	Corr. Area	% of Total	Size distribution in CV [%]	Color
87.71	103.22	1,436	43,381.5	36,452.75	3,166.7	71	31.7	■

Assay Class: High Sensitivity DNA Assay
 Data Path: C:\...ents and Settings\Bioanalyzer\2012-05-31\2012-05-31_005.xad

Created: 5/31/2012 3:10:42 PM
 Modified: 5/31/2012 5:15:51 PM

Electropherogram Summary Continued ...



Overall Results for sample 6 : 33-3

Number of peaks found: 11 Corr. Area 1: 344.0
 Noise: 0.9

Peak table for sample 6 : 33-3

Peak	Size [bp]	Conc. [pg/μl]	Molarity [pmol/l]	Observations
1	35	125.00	5,411.3	Lower Marker
2	246	13.55	83.4	
3	272	92.39	515.4	
4	286	74.71	395.9	
5	293	40.42	209.1	
6	301	34.99	176.1	
7	316	36.11	173.1	
8	329	39.14	180.0	
9	348	17.16	74.6	
10	355	24.31	103.8	
11	374	12.80	51.8	
12	386	6.50	25.5	
13	10,380	75.00	10.9	Upper Marker

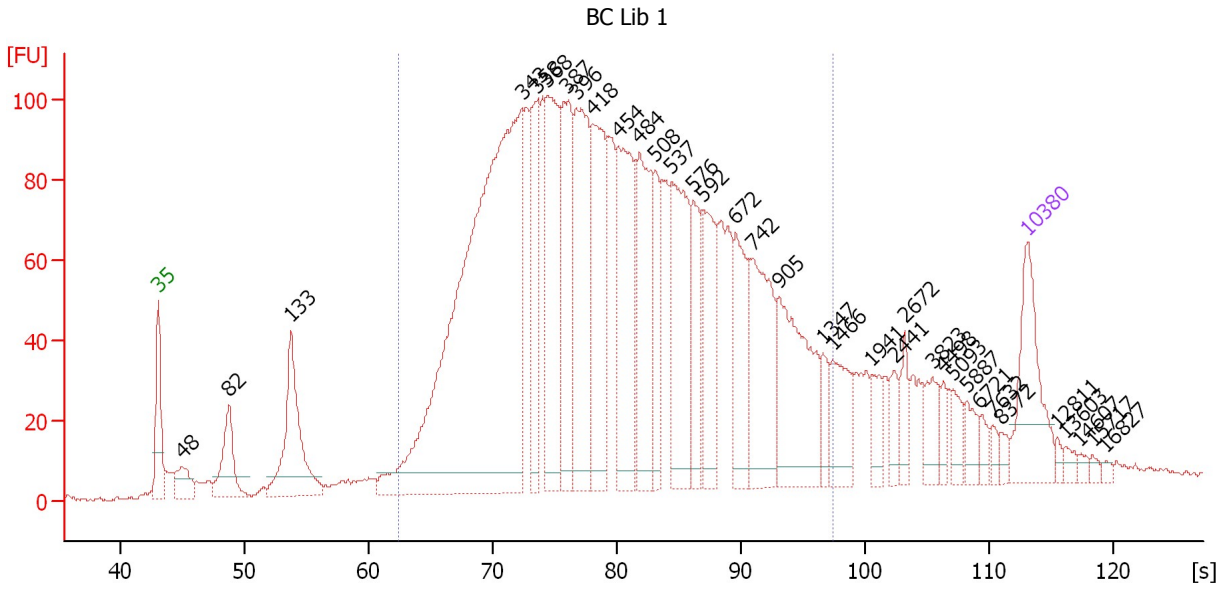
Region table for sample 6 : 33-3

From [s]	To [s]	Average Size [bp]	Molarity [pmol/l]	Conc. [pg/μl]	Corr. Area % of Total	Size distribution in CV [%]	Color
61.04	79.42	310	2,732.0	545.20	344.0 76	14.6	Blue

Assay Class: High Sensitivity DNA Assay
 Data Path: C:\...ents and Settings\Bioanalyzer\2012-05-31\2012-05-31_005.xad

Created: 5/31/2012 3:10:42 PM
 Modified: 5/31/2012 5:15:51 PM

Electropherogram Summary Continued ...



Overall Results for sample 7 : BC Lib 1

Number of peaks found: 35 Corr. Area 1: 2,946.4
 Noise: 0.5

Peak table for sample 7 : BC Lib 1

Peak	Size [bp]	Conc. [pg/μl]	Molarity [pmol/l]	Observations
1	35	125.00	5,411.3	Lower Marker
2	48	36.46	1,161.0	
3	82	76.55	1,410.6	
4	133	156.41	1,776.4	
5	343	864.61	3,821.1	
6	358	103.37	437.9	
7	368	171.89	707.7	
8	387	147.75	578.0	
9	396	190.58	728.5	
10	418	165.85	601.4	
11	454	168.81	563.8	
12	484	136.27	426.5	
13	508	75.05	224.0	
14	537	155.49	439.1	
15	576	56.80	149.5	
16	592	98.46	252.1	
17	672	86.81	195.7	
18	742	127.84	261.0	
19	905	141.00	236.0	
20	1,347	21.35	24.0	
21	1,466	48.77	50.4	
22	1,941	19.86	15.5	
23	2,441	18.32	11.4	
24	2,672	19.16	10.9	
25	3,823	25.95	10.3	
26	4,498	12.99	4.4	

Assay Class: High Sensitivity DNA Assay
 Data Path: C:\...ents and Settings\Bioanalyzer\2012-05-31\2012-05-31_005.xad


Created: 5/31/2012 3:10:42 PM
 Modified: 5/31/2012 5:15:51 PM

Electropherogram Summary Continued ...

... Peak table for sample 7 : BC Lib 1

Peak	Size [bp]	Conc. [pg/µl]	Molarity [pmol/l]	Observations
27	5,093	18.01	5.4	
28	5,887	16.69	4.3	
29	6,721	8.98	2.0	
30	7,632	7.01	1.4	
31	8,372	7.50	1.4	
32	10,380	75.00	10.9	Upper Marker
33	12,811	0.00	0.0	
34	13,603	0.00	0.0	
35	14,607	0.00	0.0	
36	15,717	0.00	0.0	
37	16,827	0.00	0.0	

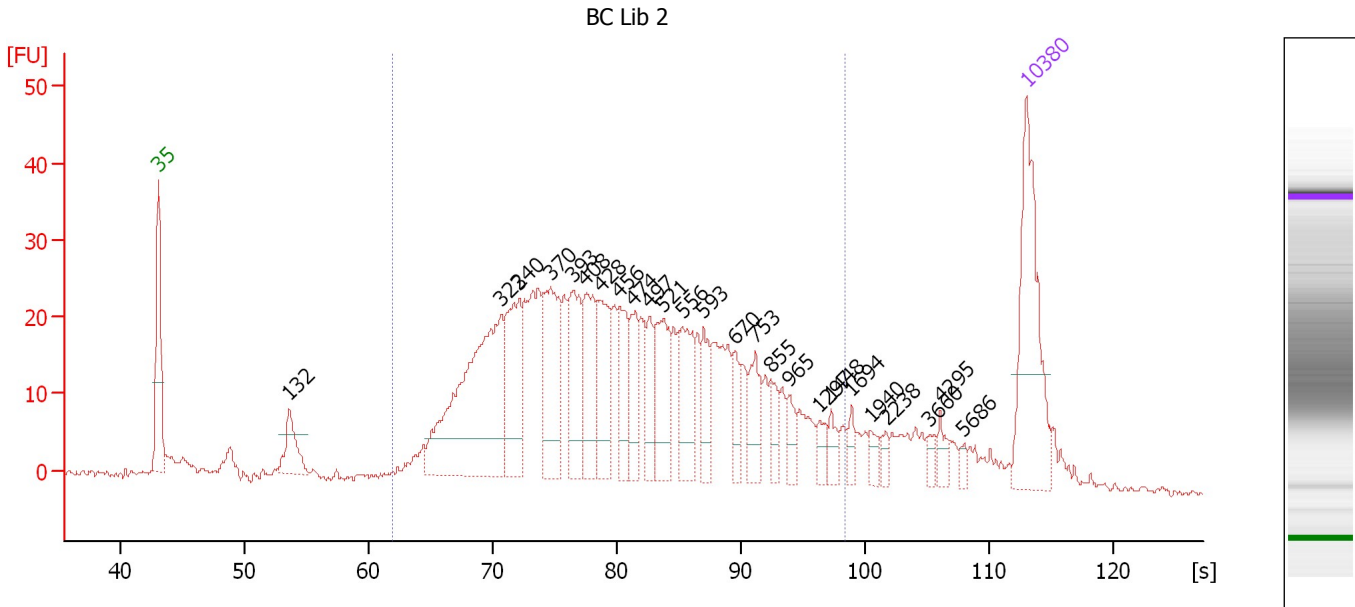
Region table for sample 7 : BC Lib 1

From [s]	To [s]	Average Size [bp]	Molarity [pmol/l]	Conc. [pg/µl]	Corr. Area % of Total	Size distribution in CV [%]	Color
62.34	97.41	504	11,973.6	3,266.48	2,946.4 81	45.2	

Assay Class: High Sensitivity DNA Assay
 Data Path: C:\...ents and Settings\Bioanalyzer\2012-05-31\2012-05-31_005.xad

Created: 5/31/2012 3:10:42 PM
 Modified: 5/31/2012 5:15:51 PM

Electropherogram Summary Continued ...



Overall Results for sample 8 : BC Lib 2

Number of peaks found: 25 Corr. Area 1: 742.3
 Noise: 0.3

Peak table for sample 8 : BC Lib 2

Peak	Size [bp]	Conc. [pg/μl]	Molarity [pmol/l]	Observations
1	35	125.00	5,411.3	Lower Marker
2	132	32.82	377.3	
3	322	191.27	898.8	
4	340	69.09	308.0	
5	370	69.91	286.1	
6	393	50.99	196.4	
7	408	52.21	193.8	
8	428	45.08	159.4	
9	456	33.87	112.5	
10	474	30.50	97.6	
11	497	25.02	76.2	
12	521	44.29	128.8	
13	556	41.85	114.1	
14	593	24.16	61.8	
15	670	17.36	39.3	
16	753	24.78	49.8	
17	855	12.36	21.9	
18	965	11.03	17.3	
19	1,297	8.76	10.2	
20	1,448	9.03	9.5	
21	1,694	6.95	6.2	
22	1,940	5.84	4.6	
23	2,238	5.26	3.6	
24	3,660	5.18	2.1	
25	4,295	7.51	2.7	
26	5,686	3.79	1.0	


Assay Class: High Sensitivity DNA Assay
Data Path: C:\...ents and Settings\Bioanalyzer\2012-05-31\2012-05-31_005.xad

Created: 5/31/2012 3:10:42 PM
Modified: 5/31/2012 5:15:51 PM

Electropherogram Summary Continued ...**... Peak table for sample 8 : BC Lib 2**

Peak	Size [bp]	Conc. [pg/μl]	Molarity [pmol/l]	Observations
27	10,380	75.00	10.9	Upper Marker

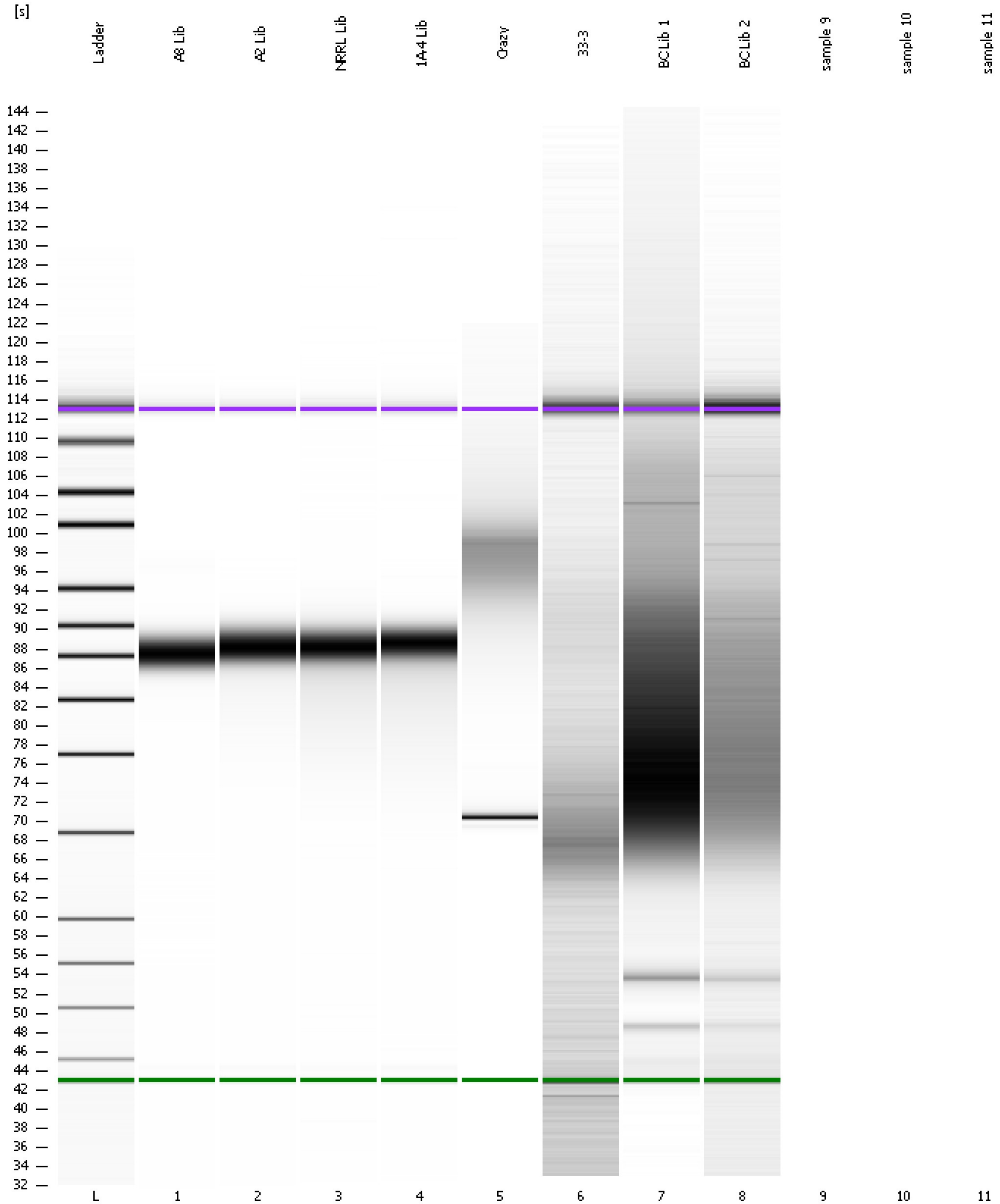
Region table for sample 8 : BC Lib 2

From [s]	To [s]	Average Size [bp]	Molarity [pmol/l]	Conc. [pg/μl]	Corr. Area % of Total	Size distribution in CV [%]	Color	
61.97	98.41	521	3,984.4	1,107.28	742.3	85	48.4	

Assay Class: High Sensitivity DNA Assay
Data Path: C:\...ents and Settings\Bioanalyzer\2012-05-31\2012-05-31_005.xad

Created: 5/31/2012 3:10:42 PM
Modified: 5/31/2012 5:15:51 PM

Gel Image



Assay Class: High Sensitivity DNA Assay
Data Path: C:\...ents and Settings\Bioanalyzer\2012-05-31\2012-05-31_005.xad

Created: 5/31/2012 3:10:42 PM
Modified: 5/31/2012 5:15:51 PM

Invalid Samples

Sample 9 has not been run, no results available.

Sample 10 has not been run, no results available.

Sample 11 has not been run, no results available.

Assay Class: High Sensitivity DNA Assay
 Data Path: C:\...ents and Settings\Bioanalyzer\2012-05-31\2012-05-31_005.xad

Created: 5/31/2012 3:10:42 PM
 Modified: 5/31/2012 5:15:51 PM

Run Logbook

Description	Number	Source	Category	Sub Category	Time	Time Zone	User	Host
Run ended on port 1 (Number of wells acquired: 9)		Instrument	Run		5/31/2012 3:43:26 PM	(GMT --07:00) Pacific Standard Time	UC Davis	D8XSMGH1
Run started on port 1 (File: C:\Documents and Settings\Bioanalyzer\2012-05-31\2012-05-31_005.xad)		Instrument	Run		5/31/2012 3:10:48 PM	(GMT --07:00) Pacific Standard Time	UC Davis	D8XSMGH1
Product Number : G2938B		Instrument	Run		5/31/2012 3:10:48 PM	(GMT --07:00) Pacific Standard Time	UC Davis	D8XSMGH1
Name :		Instrument	Run		5/31/2012 3:10:48 PM	(GMT --07:00) Pacific Standard Time	UC Davis	D8XSMGH1
Vendor : Agilent Technologies		Instrument	Run		5/31/2012 3:10:48 PM	(GMT --07:00) Pacific Standard Time	UC Davis	D8XSMGH1
Serial# : DE13701086		Instrument	Run		5/31/2012 3:10:48 PM	(GMT --07:00) Pacific Standard Time	UC Davis	D8XSMGH1
Firmware : C.01.069		Instrument	Run		5/31/2012 3:10:48 PM	(GMT --07:00) Pacific Standard Time	UC Davis	D8XSMGH1
Cartridge : Electrode		Instrument	Run		5/31/2012 3:10:48 PM	(GMT --07:00) Pacific Standard Time	UC Davis	D8XSMGH1