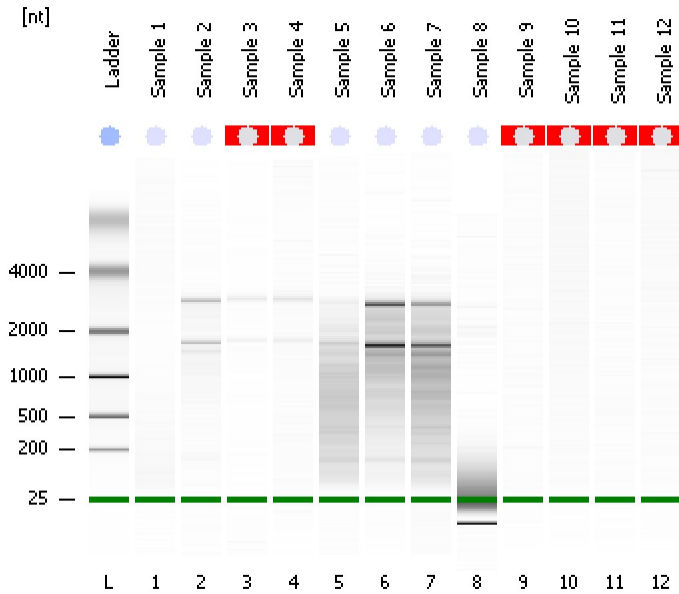


Assay Class: Plant RNA Nano
Data Path: C:\...ents and Settings\Bioanalyzer\2012-05-31\2012-05-31_006.xad

Created: 5/31/2012 4:28:39 PM
Modified: 5/31/2012 4:52:27 PM

Electrophoresis File Run Summary



Instrument Information:

Instrument Name: DE13701086 Firmware: C.01.069
Serial#: DE13701086 Type: G2938B

Assay Information:

Assay Origin Path: C:\Program Files\Agilent\2100 bioanalyzer\2100 expert\assays\RNA\Plant RNA Nano.xsy

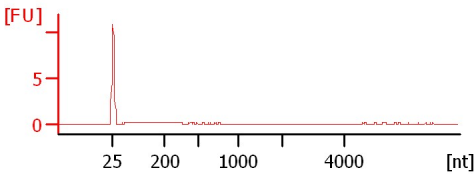
Assay Class: Plant RNA Nano
Version: 1.3
Assay Comments: Total RNA Analysis ng sensitivity (Plant)

© Copyright 2003 - 2009 Agilent Technologies, Inc.

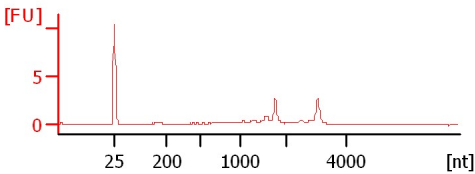
Chip Information:

Chip Lot #:
Reagent Kit Lot #:
Chip Comments:

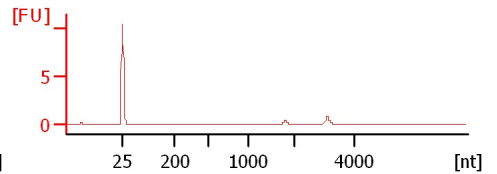
Sample 1
RIN:1



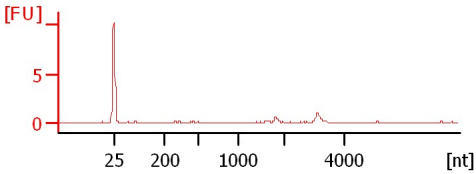
Sample 2
RIN: 7.80



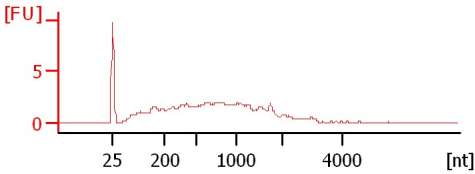
Sample 3
RIN N/A



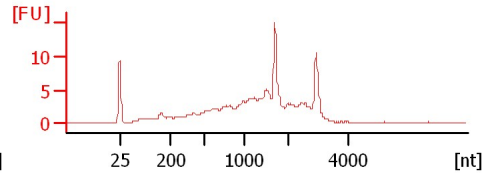
Sample 4
RIN N/A



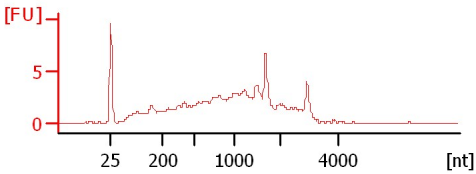
Sample 5
RIN: 3.70



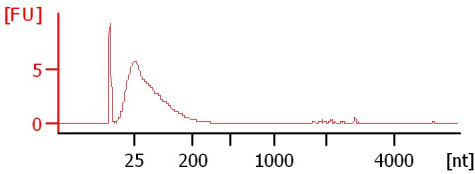
Sample 6
RIN: 5.80



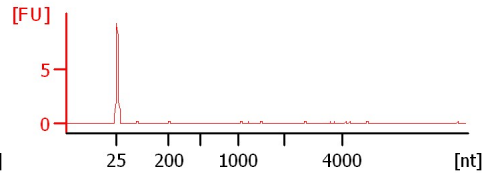
Sample 7
RIN:5



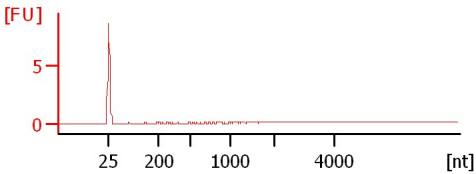
Sample 8
RIN: 1.80



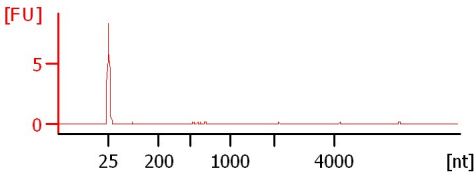
Sample 9
RIN N/A



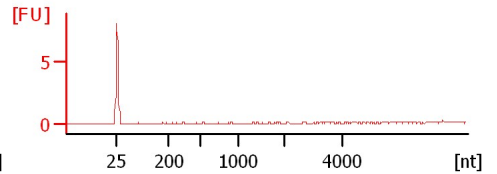
Sample 10
RIN N/A



Sample 11
RIN N/A



Sample 12
RIN N/A



Assay Class: Plant RNA Nano
 Data Path: C:\...ents and Settings\Bioanalyzer\2012-05-31\2012-05-31_006.xad

Created: 5/31/2012 4:28:39 PM
 Modified: 5/31/2012 4:52:27 PM

Electrophoresis File Run Summary (Chip Summary)

Sample Name	Sample Comment	Status	Result Label	Result Color
Sample 1		✓	RIN:1	
Sample 2		✓	RIN: 7.80	
Sample 3		✓	RIN N/A	
Sample 4		✓	RIN N/A	
Sample 5		✓	RIN: 3.70	
Sample 6		✓	RIN: 5.80	
Sample 7		✓	RIN:5	
Sample 8		✓	RIN: 1.80	
Sample 9		✓	RIN N/A	
Sample 10		✓	RIN N/A	
Sample 11		✓	RIN N/A	
Sample 12		✓	RIN N/A	
Ladder		✓	All Other Samples	

Chip Lot #

Reagent Kit Lot #

Chip Comments :

Assay Class: Plant RNA Nano
Data Path: C:\...ents and Settings\Bioanalyzer\2012-05-31\2012-05-31_006.xad

Created: 5/31/2012 4:28:39 PM
Modified: 5/31/2012 4:52:27 PM

Electrophoresis Assay Details

General Analysis Settings

Number of Available Sample and Ladder Wells (Max.) : 13
Minimum Visible Range [s] : 17
Maximum Visible Range [s] : 70
Start Analysis Time Range [s] : 19
End Analysis Time Range [s] : 69
Ladder Concentration [ng/μl] : 150
Lower Marker Concentration [ng/μl] : 0
Upper Marker Concentration [ng/μl] : 0
Used Lower Marker for Quantitation
Standard Curve Fit is Logarithmic
Show Data Aligned to Lower Marker

Integrator Settings

Integration Start Time [s] : 19
Integration End Time [s] : 69
Slope Threshold : 0.6
Height Threshold [FU] : 0.2
Area Threshold : 0.1
Width Threshold [s] : 0.2
Baseline Plateau [s] : 6

Filter Settings

Filter Width [s] : 0.5
Polynomial Order : 4

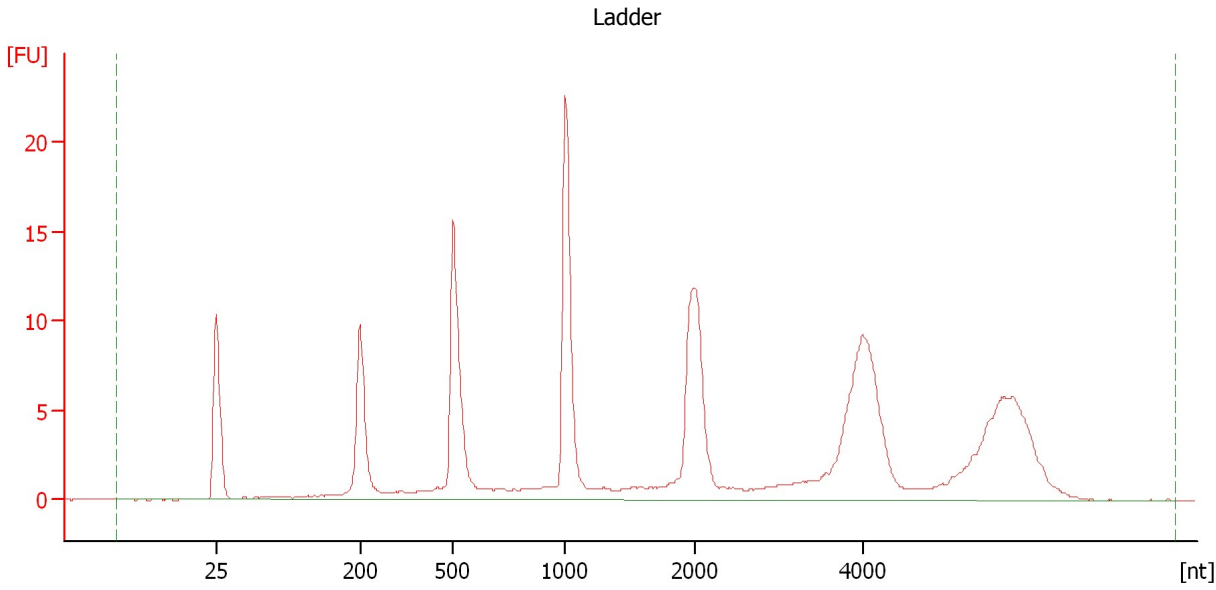
Ladder

Ladder Peak	Size
1	25
2	200
3	500
4	1000
5	2000
6	4000

Assay Class: Plant RNA Nano
Data Path: C:\...ents and Settings\Bioanalyzer\2012-05-31\2012-05-31_006.xad

Created: 5/31/2012 4:28:39 PM
Modified: 5/31/2012 4:52:27 PM

Electropherogram Summary



Overall Results for Ladder

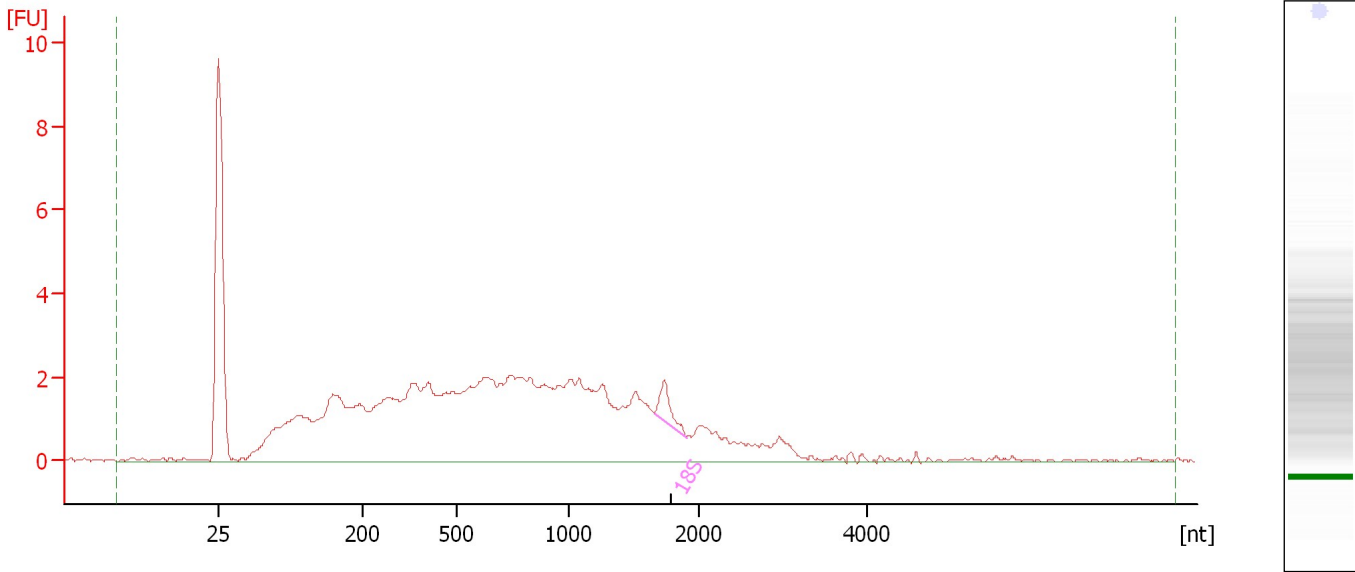
RNA Area:	170.4	Result Flagging Color:	
RNA Concentration:	150 ng/ μ l	Result Flagging Label:	All Other Samples

Assay Class: Plant RNA Nano
Data Path: C:\...ents and Settings\Bioanalyzer\2012-05-31\2012-05-31_006.xad

Created: 5/31/2012 4:28:39 PM
Modified: 5/31/2012 4:52:27 PM

Electropherogram Summary Continued ...

Sample 5



Overall Results for sample 5 : Sample 5

RNA Area:	90.9	RNA Integrity Number (RIN):	3.7 (B.02.08)
RNA Concentration:	80 ng/μl	Result Flagging Color:	
rRNA Ratio [25s / 18s]:	0.0	Result Flagging Label:	RIN: 3.70

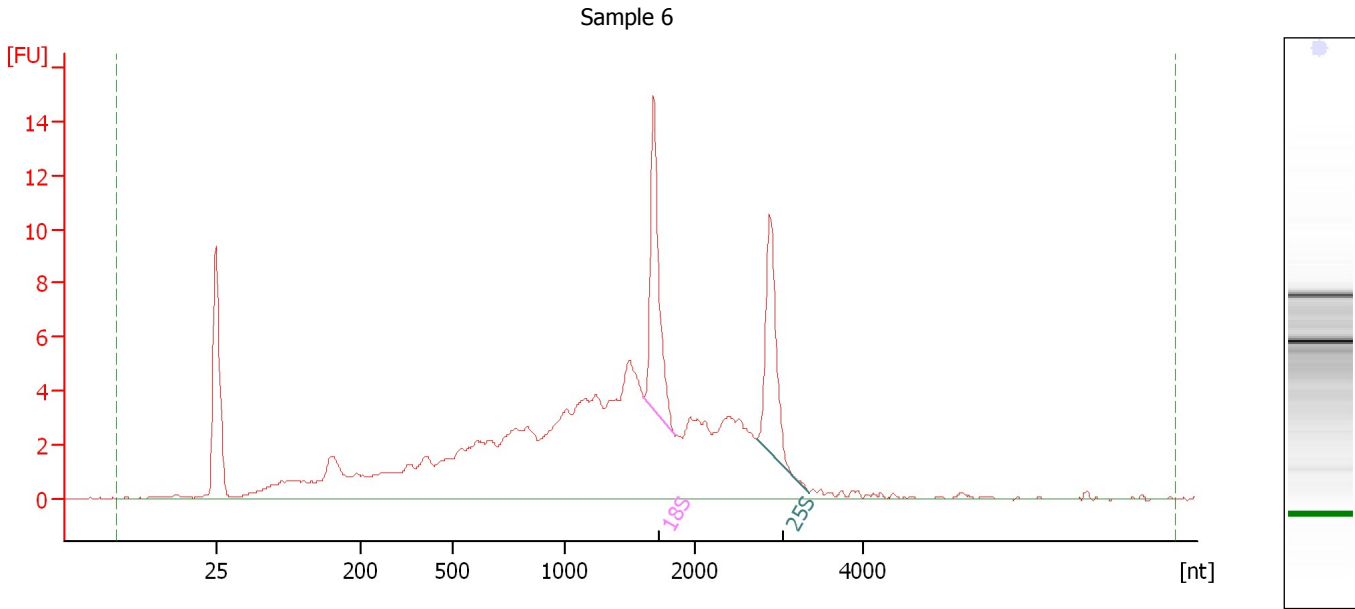
Fragment table for sample 5 : Sample 5

Name	Start Size [nt]	End Size [nt]	Area	% of total Area
18S	1,660	1,909	1.2	1.3

Assay Class: Plant RNA Nano
Data Path: C:\...ents and Settings\Bioanalyzer\2012-05-31\2012-05-31_006.xad

Created: 5/31/2012 4:28:39 PM
Modified: 5/31/2012 4:52:27 PM

Electropherogram Summary Continued ...



Overall Results for sample 6 : Sample 6

RNA Area:	155.1	RNA Integrity Number (RIN):	5.8 (B.02.08)
RNA Concentration:	137 ng/μl	Result Flagging Color:	
rRNA Ratio [25s / 18s]:	0.8	Result Flagging Label:	RIN: 5.80

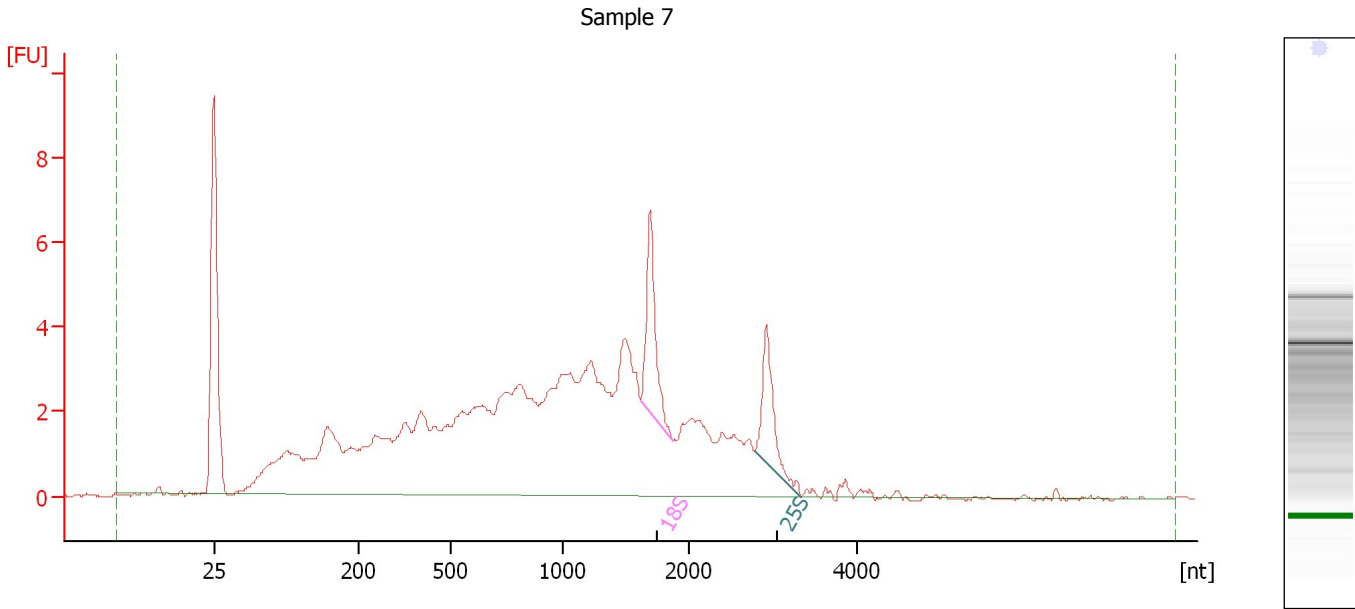
Fragment table for sample 6 : Sample 6

Name	Start Size [nt]	End Size [nt]	Area	% of total Area
18S	1,608	1,850	12.0	7.7
25S	2,734	3,354	9.9	6.3

Assay Class: Plant RNA Nano
Data Path: C:\...ents and Settings\Bioanalyzer\2012-05-31\2012-05-31_006.xad

Created: 5/31/2012 4:28:39 PM
Modified: 5/31/2012 4:52:27 PM

Electropherogram Summary Continued ...



Overall Results for sample 7 : Sample 7

RNA Area: 123.2 RNA Integrity Number (RIN): 5 (B.02.08)
RNA Concentration: 108 ng/μl Result Flagging Color:
rRNA Ratio [25s / 18s]: 0.7 Result Flagging Label: RIN:5

Fragment table for sample 7 : Sample 7

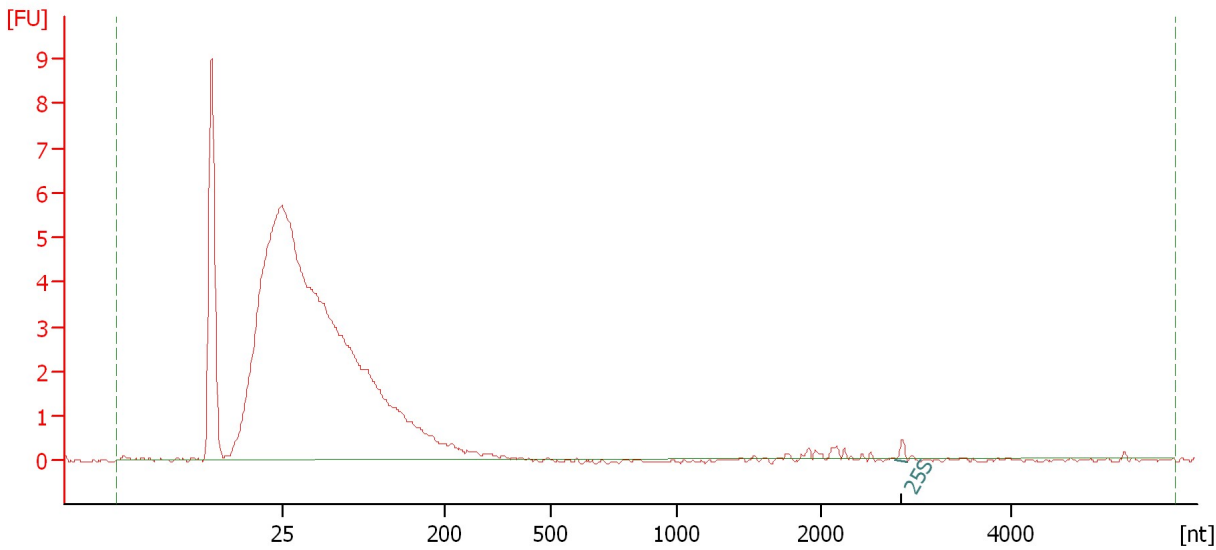
Name	Start Size [nt]	End Size [nt]	Area	% of total Area
18S	1,613	1,864	5.2	4.2
25S	2,773	3,320	3.8	3.1

Assay Class: Plant RNA Nano
Data Path: C:\...ents and Settings\Bioanalyzer\2012-05-31\2012-05-31_006.xad

Created: 5/31/2012 4:28:39 PM
Modified: 5/31/2012 4:52:27 PM

Electropherogram Summary Continued ...

Sample 8



Overall Results for sample 8 : Sample 8

RNA Area:	55.5	RNA Integrity Number (RIN):	1.8 (B.02.08)
RNA Concentration:	49 ng/μl	Result Flagging Color:	
rRNA Ratio [25s / 18s]:	0.0	Result Flagging Label:	RIN: 1.80

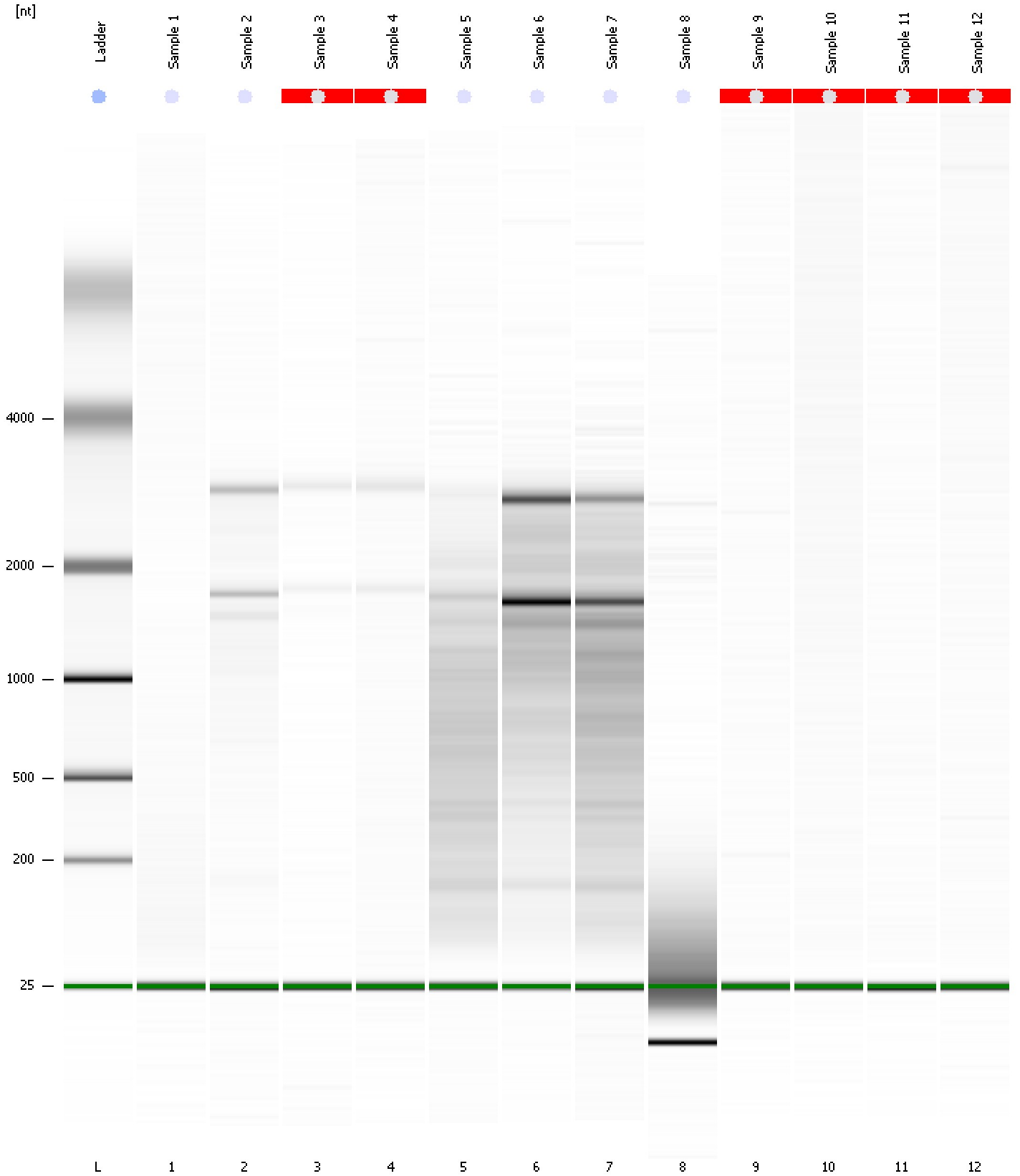
Fragment table for sample 8 : Sample 8

Name	Start Size [nt]	End Size [nt]	Area	% of total Area
25S	2,781	2,904	0.2	0.4

Assay Class: Plant RNA Nano
Data Path: C:\...ents and Settings\Bioanalyzer\2012-05-31\2012-05-31_006.xad

Created: 5/31/2012 4:28:39 PM
Modified: 5/31/2012 4:52:27 PM

Gel Image



Assay Class: Plant RNA Nano
 Data Path: C:\...ents and Settings\Bioanalyzer\2012-05-31\2012-05-31_006.xad

Created: 5/31/2012 4:28:39 PM
 Modified: 5/31/2012 4:52:27 PM

Run Logbook

Description	Number	Source	Category	Sub Category	Time	Time Zone	User	Host
Run ended on port 1 (Number of wells acquired: 13)		Instrument	Run		5/31/2012 4:52:25 PM	(GMT --07:00) Pacific Standard Time	UC Davis	D8XSMGH1
Run started on port 1 (File: C:\Documents and Settings\Bioanalyzer\2012-05-31\2012-05-31_006.xad)		Instrument	Run		5/31/2012 4:28:45 PM	(GMT --07:00) Pacific Standard Time	UC Davis	D8XSMGH1
Product Number : G2938B		Instrument	Run		5/31/2012 4:28:45 PM	(GMT --07:00) Pacific Standard Time	UC Davis	D8XSMGH1
Name :		Instrument	Run		5/31/2012 4:28:45 PM	(GMT --07:00) Pacific Standard Time	UC Davis	D8XSMGH1
Vendor : Agilent Technologies		Instrument	Run		5/31/2012 4:28:45 PM	(GMT --07:00) Pacific Standard Time	UC Davis	D8XSMGH1
Serial# : DE13701086		Instrument	Run		5/31/2012 4:28:44 PM	(GMT --07:00) Pacific Standard Time	UC Davis	D8XSMGH1
Firmware : C.01.069		Instrument	Run		5/31/2012 4:28:44 PM	(GMT --07:00) Pacific Standard Time	UC Davis	D8XSMGH1
Cartridge : Electrode		Instrument	Run		5/31/2012 4:28:44 PM	(GMT --07:00) Pacific Standard Time	UC Davis	D8XSMGH1