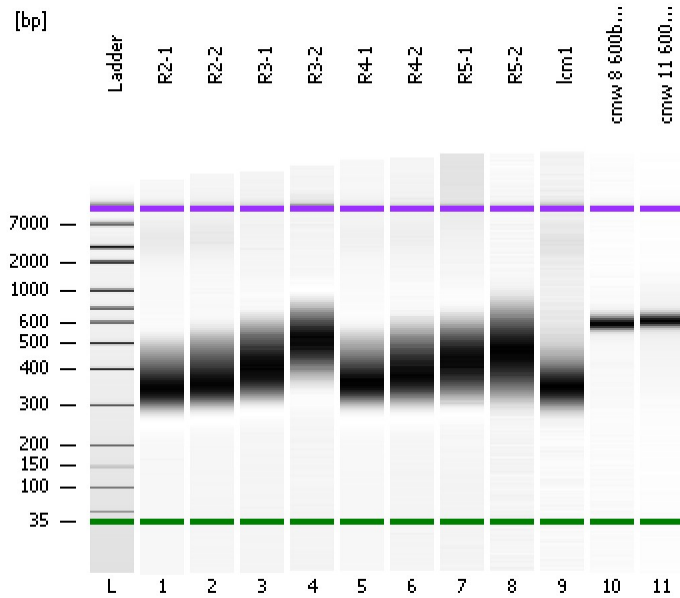


Assay Class: High Sensitivity DNA Assay  
Data Path: C:\...ents and Settings\Bioanalyzer\2012-06-01\2012-06-01\_001.xad

Created: 6/1/2012 9:52:23 AM  
Modified: 6/1/2012 10:35:00 AM

**Electrophoresis File Run Summary**



Instrument Information:

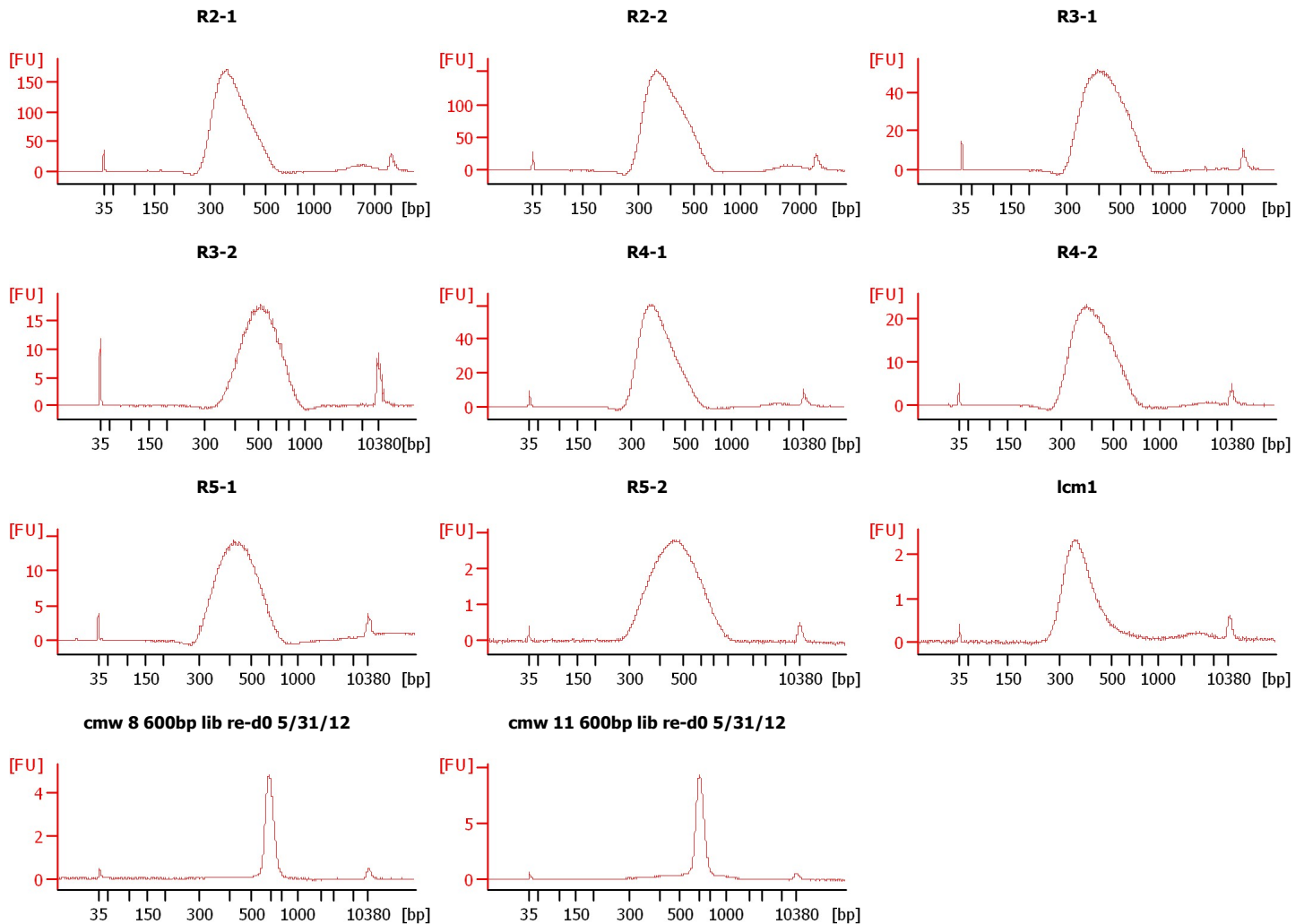
Instrument Name: DE13701086      Firmware: C.01.069  
Serial#: DE13701086      Type: G2938B

Assay Information:

Assay Origin Path: C:\Program Files\Agilent\2100 bioanalyzer\2100 expert\assays\dsDNA\High Sensitivity DNA.xsy  
Assay Class: High Sensitivity DNA Assay  
Version: 1.03  
Assay Comments: Copyright © 2003-2010 Agilent Technologies

Chip Information:

Chip Lot #:      Reagent Kit Lot #:      Chip Comments:



Assay Class: High Sensitivity DNA Assay  
 Data Path: C:\...ents and Settings\Bioanalyzer\2012-06-01\2012-06-01\_001.xad

Created: 6/1/2012 9:52:23 AM  
 Modified: 6/1/2012 10:35:00 AM

**Electrophoresis File Run Summary (Chip Summary)**

Sample Name	Sample Comment	Rest. Digest	Status	Observation	Result Label	Result Color
R2-1		<input type="checkbox"/>	✓			
R2-2		<input type="checkbox"/>	✓			
R3-1		<input type="checkbox"/>	✓			
R3-2		<input type="checkbox"/>	✓			
R4-1		<input type="checkbox"/>	✓			
R4-2		<input type="checkbox"/>	✓			
R5-1		<input type="checkbox"/>	✓			
R5-2		<input type="checkbox"/>	✓			
lcm1		<input type="checkbox"/>	✓			
cmw 8 600bp lib re-d0 5/31/12		<input type="checkbox"/>	✓			
cmw 11 600bp lib re-d0 5/31/12		<input type="checkbox"/>	✓			
Ladder		<input type="checkbox"/>	✓			

**Chip Lot #**

**Reagent Kit Lot #**

**Chip Comments :**

Assay Class: High Sensitivity DNA Assay  
 Data Path: C:\...ents and Settings\Bioanalyzer\2012-06-01\2012-06-01\_001.xad

Created: 6/1/2012 9:52:23 AM  
 Modified: 6/1/2012 10:35:00 AM

**Electrophoresis Assay Details**

**General Analysis Settings**

Number of Available Sample and Ladder Wells (Max.) : 12  
 Minimum Visible Range [s] : 32  
 Maximum Visible Range [s] : 138  
 Start Analysis Time Range [s] : 33  
 End Analysis Time Range [s] : 137.5  
 Ladder Concentration [pg/μl] : 1950  
 Uses Standard Area for Ladder Fragments  
 Lower Marker Concentration [pg/μl] : 125  
 Upper Marker Concentration [pg/μl] : 75  
 Used Upper Marker for Quantitation  
 Standard Curve Fit is Point to Point  
 Show Data Aligned to Lower and Upper Marker

**Integrator Settings**

Integration Start Time [s] : 33.05  
 Integration End Time [s] : 137  
 Slope Threshold : 0.8  
 Height Threshold [FU] : 5  
 Area Threshold : 0.1  
 Width Threshold [s] : 0.6  
 Baseline Plateau [s] : 0.5

**Filter Settings**

Filter Width [s] : 0.5  
 Polynomial Order : 4

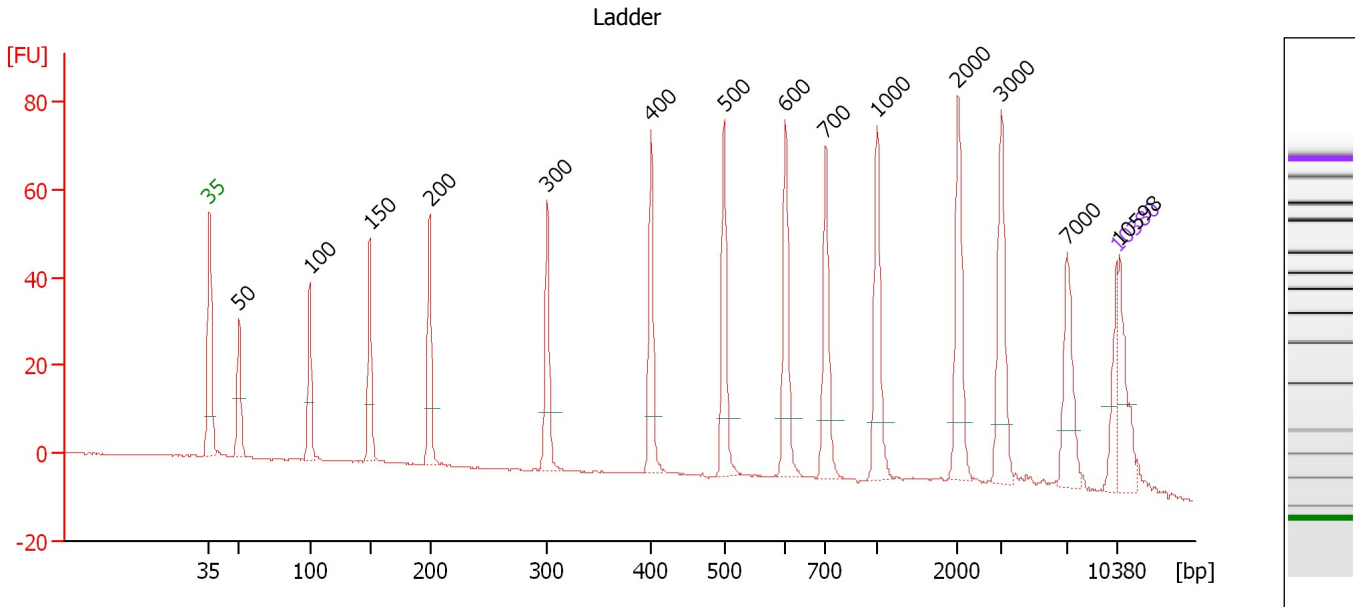
**Ladder**

Ladder Peak	Size	Area
1	35	160
2	50	210
3	100	208
4	150	221
5	200	242
6	300	270
7	400	305
8	500	306
9	600	336
10	700	321
11	1000	366
12	2000	413
13	3000	411
14	7000	400
15	10380	214

Assay Class: High Sensitivity DNA Assay  
 Data Path: C:\...ents and Settings\Bioanalyzer\2012-06-01\2012-06-01\_001.xad

Created: 6/1/2012 9:52:23 AM  
 Modified: 6/1/2012 10:35:00 AM

**Electropherogram Summary**



**Overall Results for Ladder**

Noise: 0.1

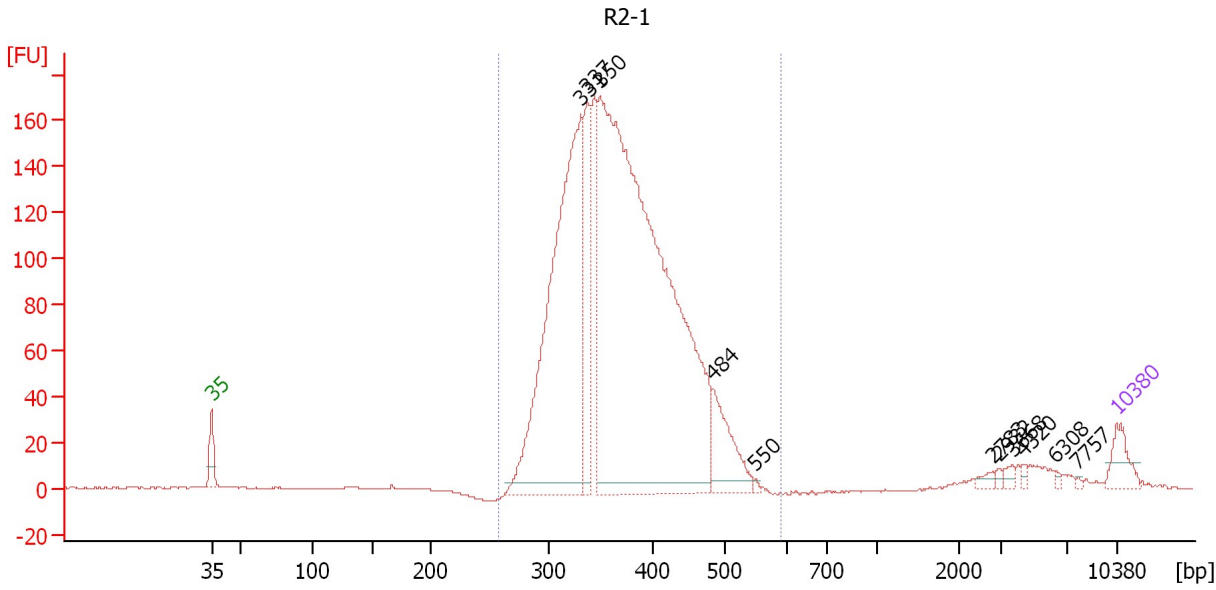
**Peak table for Ladder**

Peak	Size [bp]	Conc. [pg/μl]	Molarity [pmol/l]	Observations
1	35	125.00	5,411.3	Lower Marker
2	50	150.00	4,545.5	Ladder Peak
3	100	150.00	2,272.7	Ladder Peak
4	150	150.00	1,515.2	Ladder Peak
5	200	150.00	1,136.4	Ladder Peak
6	300	150.00	757.6	Ladder Peak
7	400	150.00	568.2	Ladder Peak
8	500	150.00	454.5	Ladder Peak
9	600	150.00	378.8	Ladder Peak
10	700	150.00	324.7	Ladder Peak
11	1,000	150.00	227.3	Ladder Peak
12	2,000	150.00	113.6	Ladder Peak
13	3,000	150.00	75.8	Ladder Peak
14	7,000	150.00	32.5	Ladder Peak
15	10,380	75.00	10.9	Upper Marker
16	10,598	0.00	0.0	

Assay Class: High Sensitivity DNA Assay  
 Data Path: C:\...ents and Settings\Bioanalyzer\2012-06-01\2012-06-01\_001.xad

Created: 6/1/2012 9:52:23 AM  
 Modified: 6/1/2012 10:35:00 AM

**Electropherogram Summary Continued ...**



**Overall Results for sample 1 : R2-1**

Number of peaks found: 11                      Corr. Area 1: 2,423.6  
 Noise: 0.2

**Peak table for sample 1 : R2-1**

Peak	Size [bp]	Conc. [pg/μl]	Molarity [pmol/l]	Observations
1	35	125.00	5,411.3	Lower Marker
2	331	2,092.05	9,569.0	
3	337	429.63	1,929.0	
4	350	4,223.08	18,289.3	
5	484	279.66	875.3	
6	550	7.70	21.2	
7	2,783	19.39	10.6	
8	2,932	10.13	5.2	
9	3,668	18.54	7.7	
10	4,320	11.32	4.0	
11	6,308	8.36	2.0	
12	7,757	4.91	1.0	
13	10,380	75.00	10.9	Upper Marker

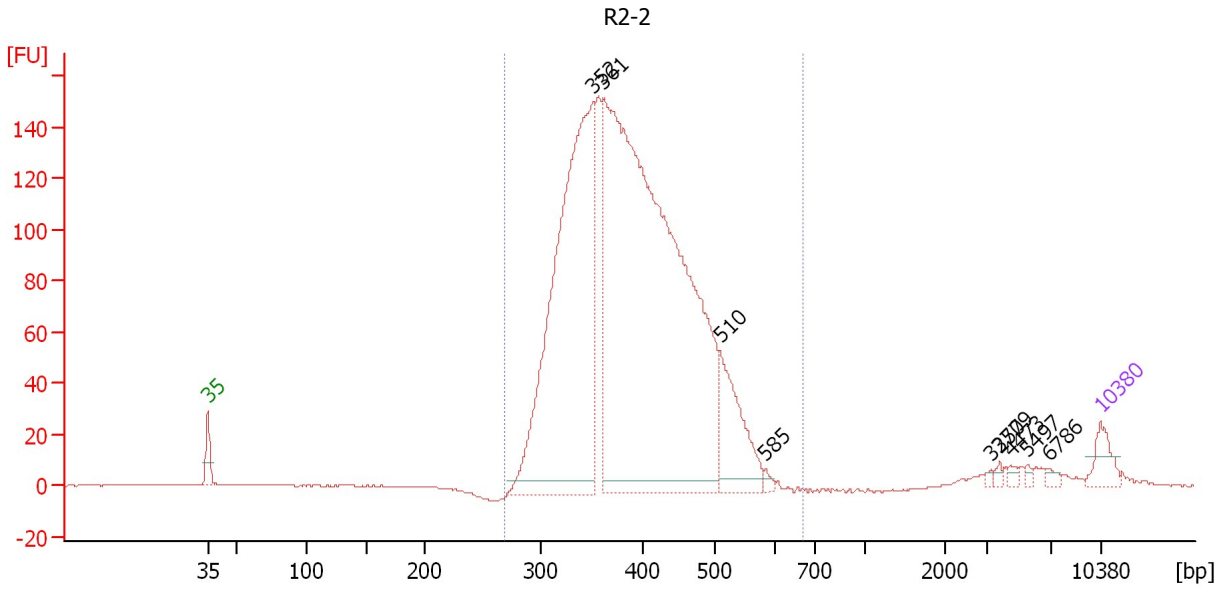
**Region table for sample 1 : R2-1**

From [bp]	To [bp]	Average Size [bp]	Molarity [pmol/l]	Conc. [pg/μl]	Corr. Area	% of Total	Size distribution in CV [%]	Color
257	591	372	29,216.5	6,990.11	2,423.6	97	14.6	Blue

Assay Class: High Sensitivity DNA Assay  
 Data Path: C:\...ents and Settings\Bioanalyzer\2012-06-01\2012-06-01\_001.xad

Created: 6/1/2012 9:52:23 AM  
 Modified: 6/1/2012 10:35:00 AM

**Electropherogram Summary Continued ...**



**Overall Results for sample 2 : R2-2**

Number of peaks found: 9                      Corr. Area 1: 2,373.0  
 Noise: 0.2

**Peak table for sample 2 : R2-2**

Peak	Size [bp]	Conc. [pg/μl]	Molarity [pmol/l]	Observations
1	35	125.00	5,411.3	Lower Marker
2	352	2,666.11	11,479.7	
3	361	4,754.56	19,937.9	
4	510	440.32	1,308.1	
5	585	21.72	56.2	
6	3,250	9.69	4.5	
7	3,779	13.28	5.3	
8	4,473	15.09	5.1	
9	5,497	11.43	3.2	
10	6,786	16.31	3.6	
11	10,380	75.00	10.9	Upper Marker

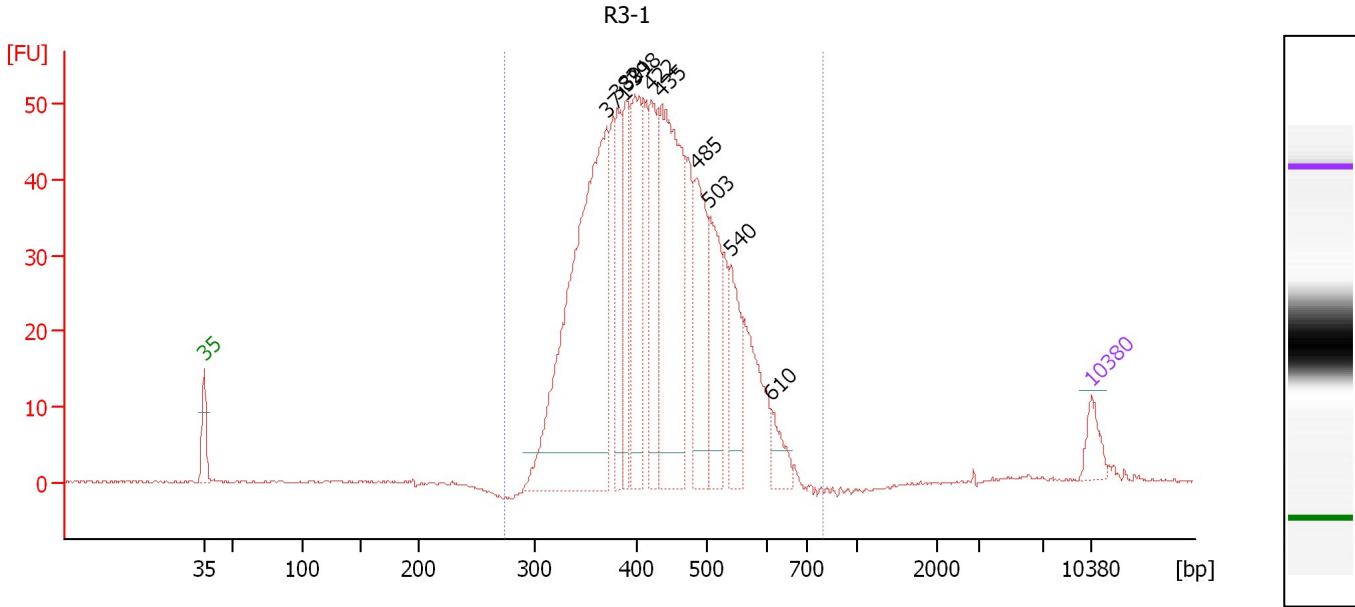
**Region table for sample 2 : R2-2**

From [bp]	To [bp]	Average Size [bp]	Molarity [pmol/l]	Conc. [pg/μl]	Corr. Area	% of Total	Size distribution in CV [%]	Color
269	669	394	30,836.6	7,771.08	2,373.0	97	16.2	Blue

Assay Class: High Sensitivity DNA Assay  
 Data Path: C:\...ents and Settings\Bioanalyzer\2012-06-01\2012-06-01\_001.xad

Created: 6/1/2012 9:52:23 AM  
 Modified: 6/1/2012 10:35:00 AM

**Electropherogram Summary Continued ...**



**Overall Results for sample 3 : R3-1**

Number of peaks found: 10                      Corr. Area 1: 881.6  
 Noise: 0.2

**Peak table for sample 3 : R3-1**

Peak	Size [bp]	Conc. [pg/μl]	Molarity [pmol/l]	Observations
1	35	125.00	5,411.3	Lower Marker
2	371	2,165.00	8,841.2	
3	382	374.14	1,485.7	
4	391	348.92	1,353.7	
5	398	587.89	2,235.7	
6	422	462.18	1,660.8	
7	435	1,213.97	4,227.6	
8	485	546.57	1,707.2	
9	503	420.66	1,268.0	
10	540	308.40	865.3	
11	610	110.45	274.3	
12	10,380	75.00	10.9	Upper Marker

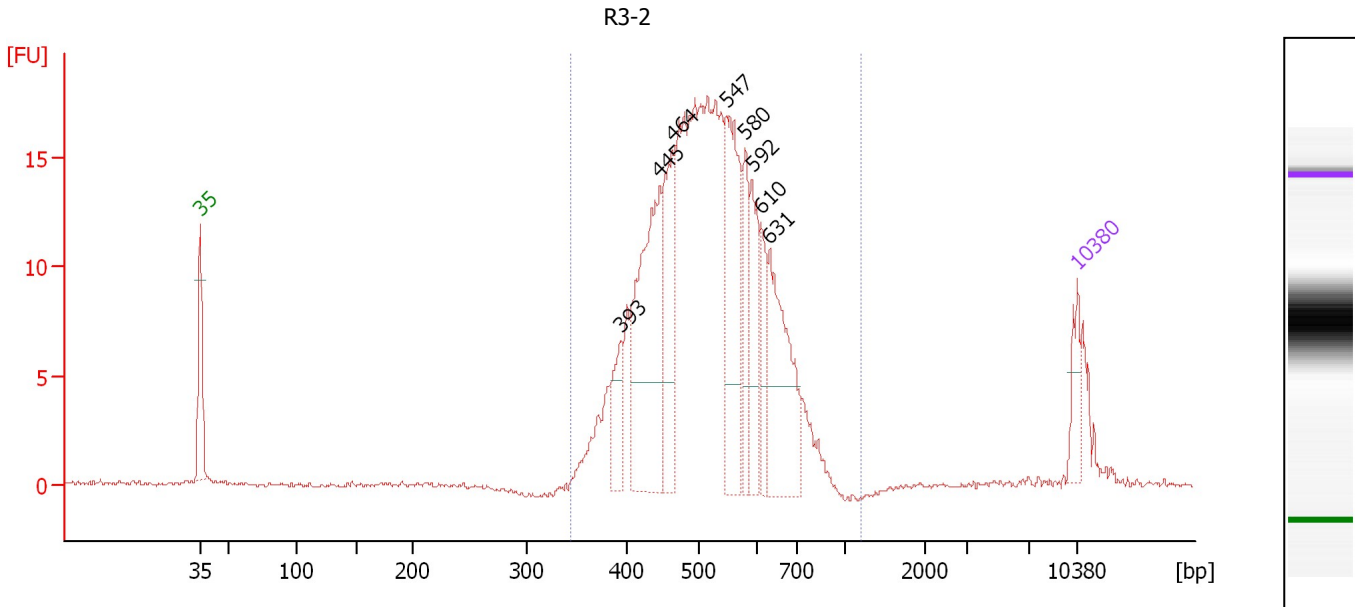
**Region table for sample 3 : R3-1**

From [bp]	To [bp]	Average Size [bp]	Molarity [pmol/l]	Conc. [pg/μl]	Corr. Area	% of Total	Size distribution in CV [%]	Color
273	798	434	28,484.2	7,849.46	881.6	99	17.3	Blue

Assay Class: High Sensitivity DNA Assay  
 Data Path: C:\...ents and Settings\Bioanalyzer\2012-06-01\2012-06-01\_001.xad

Created: 6/1/2012 9:52:23 AM  
 Modified: 6/1/2012 10:35:00 AM

**Electropherogram Summary Continued ...**



**Overall Results for sample 4 : R3-2**

Number of peaks found: 8                      Corr. Area 1: 253.4  
 Noise: 0.1

**Peak table for sample 4 : R3-2**

Peak	Size [bp]	Conc. [pg/μl]	Molarity [pmol/l]	Observations
1	35	125.00	5,411.3	Lower Marker
2	393	139.43	538.0	
3	445	683.47	2,328.5	
4	464	339.31	1,109.0	
5	547	453.05	1,253.9	
6	580	166.02	433.8	
7	592	212.33	543.9	
8	610	125.90	312.6	
9	631	402.35	966.6	
10	10,380	75.00	10.9	Upper Marker

**Region table for sample 4 : R3-2**

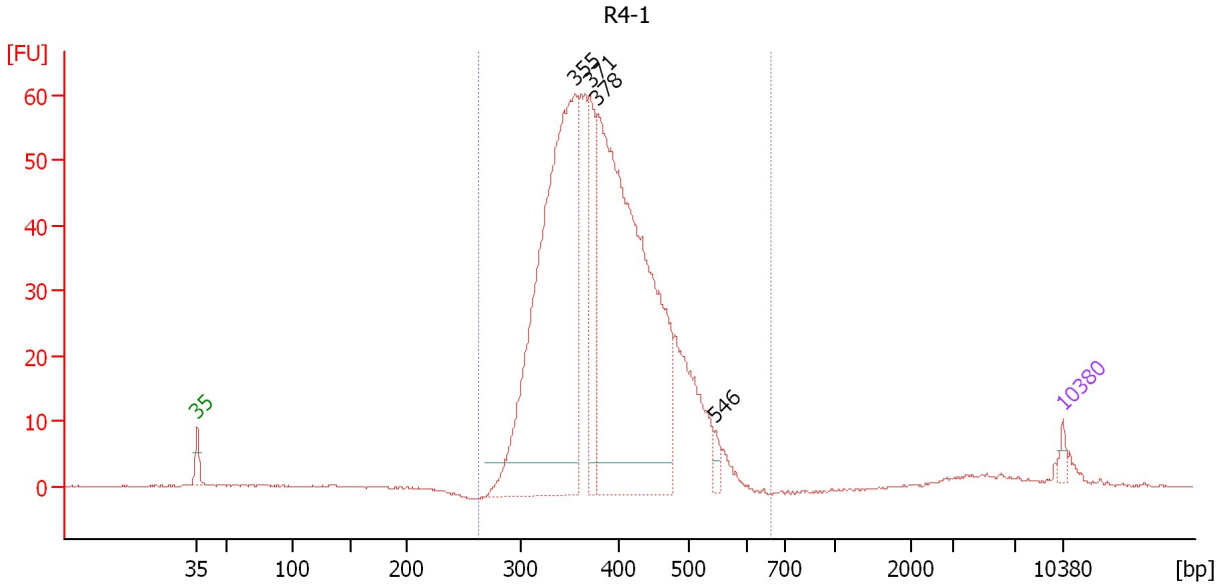
From [bp]	To [bp]	Average Size [bp]	Molarity [pmol/l]	Conc. [pg/μl]	Corr. Area	% of Total	Size distribution in CV [%]	Color
343	1,187	521	13,161.2	4,355.73	253.4	97	17.2	Blue



Assay Class: High Sensitivity DNA Assay  
 Data Path: C:\...ents and Settings\Bioanalyzer\2012-06-01\2012-06-01\_001.xad

Created: 6/1/2012 9:52:23 AM  
 Modified: 6/1/2012 10:35:00 AM

**Electropherogram Summary Continued ...**



**Overall Results for sample 5 : R4-1**

Number of peaks found: 4                      Corr. Area 1: 864.1  
 Noise: 0.1

**Peak table for sample 5 : R4-1**

Peak	Size [bp]	Conc. [pg/μl]	Molarity [pmol/l]	Observations
1	35	125.00	5,411.3	Lower Marker
2	355	7,646.40	32,593.9	
3	371	1,184.15	4,834.7	
4	378	8,305.98	33,282.2	
5	546	127.78	354.5	
6	10,380	75.00	10.9	Upper Marker

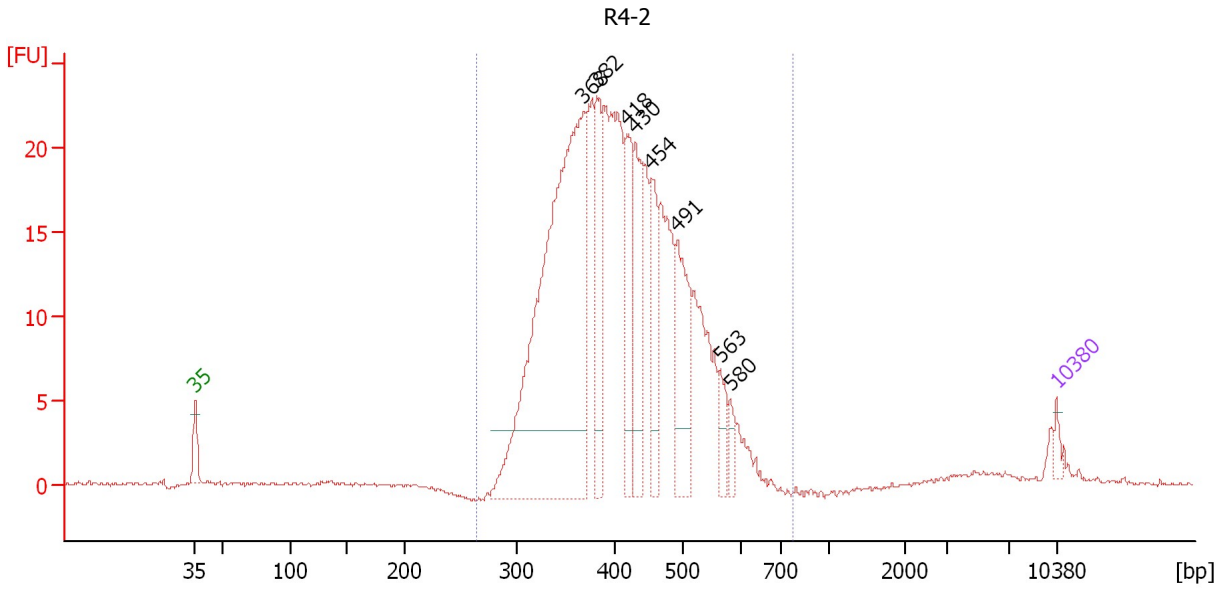
**Region table for sample 5 : R4-1**

From [bp]	To [bp]	Average Size [bp]	Molarity [pmol/l]	Conc. [pg/μl]	Corr. Area	% of Total	Size distribution in CV [%]	Color
263	664	391	79,262.6	19,899.43	864.1	97	15.3	Blue

Assay Class: High Sensitivity DNA Assay  
 Data Path: C:\...ents and Settings\Bioanalyzer\2012-06-01\2012-06-01\_001.xad

Created: 6/1/2012 9:52:23 AM  
 Modified: 6/1/2012 10:35:00 AM

**Electropherogram Summary Continued ...**



**Setpoint Deviations for sample 6 : R4-2**

Height Threshold [FU] : 4

**Overall Results for sample 6 : R4-2**

Number of peaks found: 8                      Corr. Area 1: 382.5  
 Noise: 0.1

**Peak table for sample 6 : R4-2**

Peak	Size [bp]	Conc. [pg/μl]	Molarity [pmol/l]	Observations
1	35	125.00	5,411.3	Lower Marker
2	368	6,579.22	27,056.2	
3	382	984.00	3,902.8	
4	418	846.53	3,071.6	
5	430	1,027.04	3,619.9	
6	454	657.65	2,196.2	
7	491	1,101.38	3,396.1	
8	563	295.03	794.0	
9	580	159.76	417.1	
10	10,380	75.00	10.9	Upper Marker

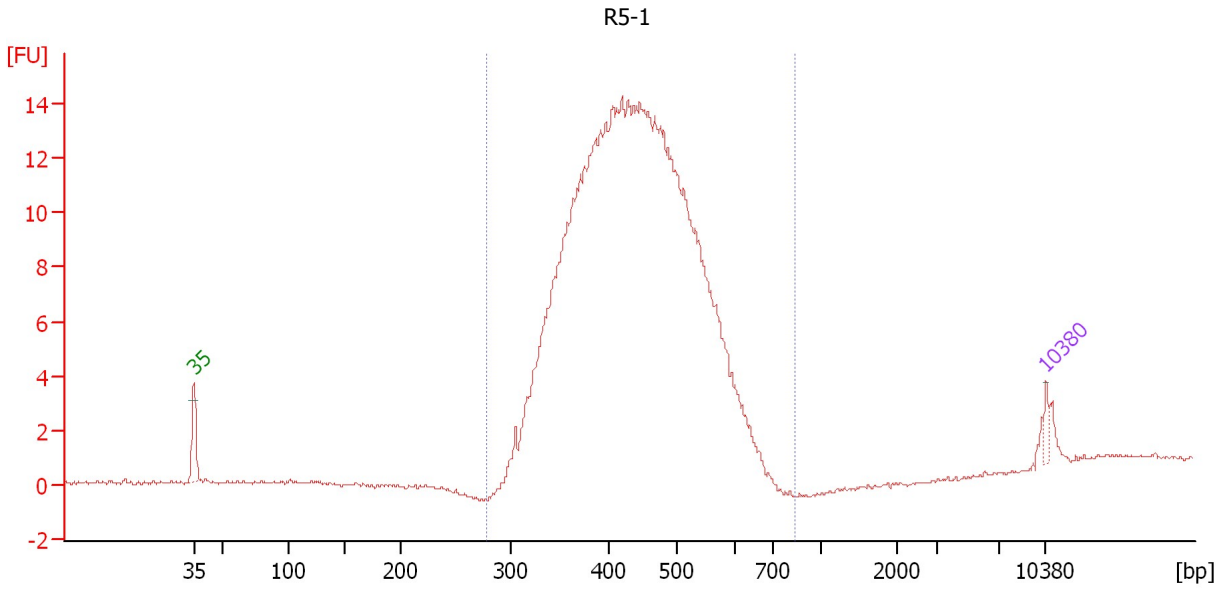
**Region table for sample 6 : R4-2**

From [bp]	To [bp]	Average Size [bp]	Molarity [pmol/l]	Conc. [pg/μl]	Corr. Area	% of Total	Size distribution in CV [%]	Color
265	778	417	70,880.4	18,794.22	382.5	97	17.2	Blue

Assay Class: High Sensitivity DNA Assay  
 Data Path: C:\...ents and Settings\Bioanalyzer\2012-06-01\2012-06-01\_001.xad

Created: 6/1/2012 9:52:23 AM  
 Modified: 6/1/2012 10:35:00 AM

**Electropherogram Summary Continued ...**



**Setpoint Deviations for sample 7 : R5-1**

Height Threshold [FU] : 3

**Overall Results for sample 7 : R5-1**

Number of peaks found: 0  
 Noise: 0.1  
 Corr. Area 1: 225.0

**Peak table for sample 7 : R5-1**

Peak	Size [bp]	Conc. [pg/μl]	Molarity [pmol/l]	Observations
1	35	125.00	5,411.3	Lower Marker
2	10,380	75.00	10.9	Upper Marker

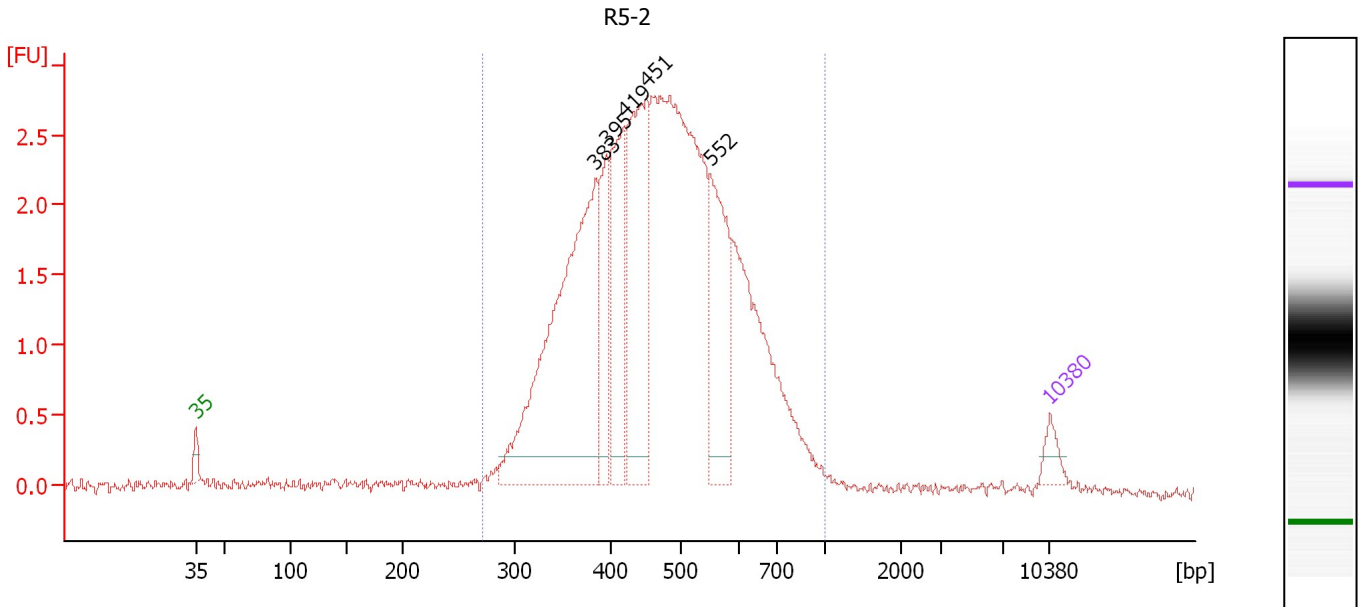
**Region table for sample 7 : R5-1**

From [bp]	To [bp]	Average Size [bp]	Molarity [pmol/l]	Conc. [pg/μl]	Corr. Area	% of Total	Size distribution in CV [%]	Color
277	833	441	71,638.2	20,099.93	225.0	99	16.8	Blue

Assay Class: High Sensitivity DNA Assay  
 Data Path: C:\...ents and Settings\Bioanalyzer\2012-06-01\2012-06-01\_001.xad

Created: 6/1/2012 9:52:23 AM  
 Modified: 6/1/2012 10:35:00 AM

**Electropherogram Summary Continued ...**



**Setpoint Deviations for sample 8 : R5-2**

Slope Threshold : 0.1                      Height Threshold [FU] : 0.2

**Overall Results for sample 8 : R5-2**

Number of peaks found: 5                      Corr. Area 1: 56.9  
 Noise: 0.0

**Peak table for sample 8 : R5-2**

Peak	Size [bp]	Conc. [pg/μl]	Molarity [pmol/l]	Observations
1	35	125.00	5,411.3	Lower Marker
2	383	2,450.32	9,690.0	
3	395	474.46	1,821.7	
4	419	804.73	2,911.7	
5	451	1,263.64	4,242.4	
6	552	783.84	2,152.1	
7	10,380	75.00	10.9	Upper Marker

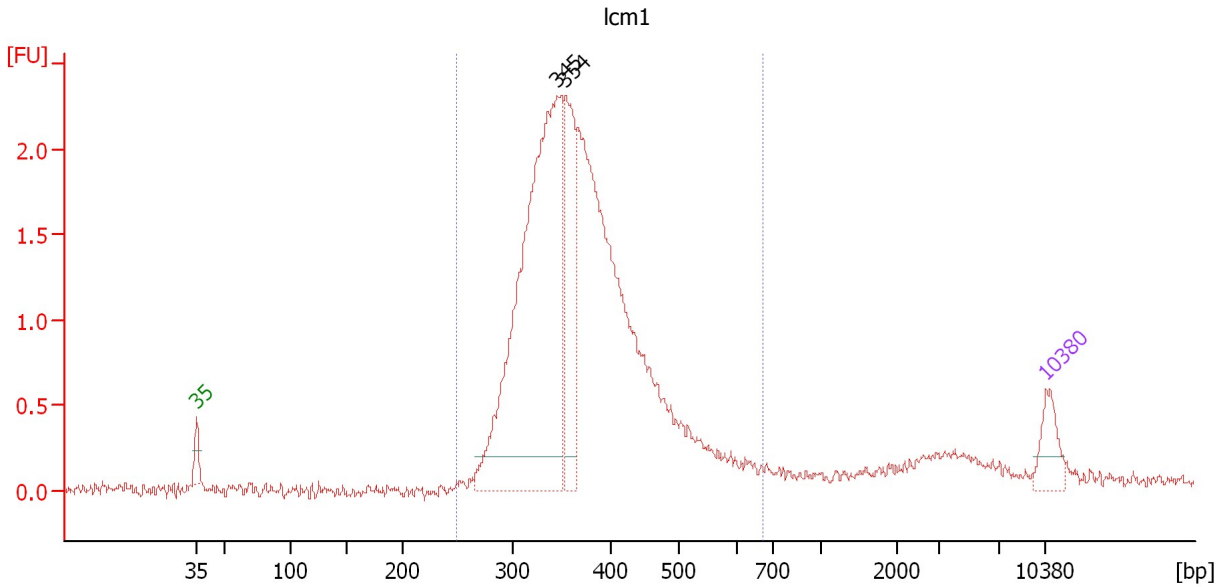
**Region table for sample 8 : R5-2**

From [bp]	To [bp]	Average Size [bp]	Molarity [pmol/l]	Conc. [pg/μl]	Corr. Area	% of Total	Size distribution in CV [%]	Color
273	1,000	480	36,568.6	10,805.95	56.9	95	23.7	Blue

Assay Class: High Sensitivity DNA Assay  
 Data Path: C:\...ents and Settings\Bioanalyzer\2012-06-01\2012-06-01\_001.xad

Created: 6/1/2012 9:52:23 AM  
 Modified: 6/1/2012 10:35:00 AM

**Electropherogram Summary Continued ...**



**Setpoint Deviations for sample 9 : lcm1**

Slope Threshold : 0.1                      Height Threshold [FU] : 0.2

**Overall Results for sample 9 : lcm1**

Number of peaks found: 2                      Corr. Area 1: 31.8  
 Noise: 0.0

**Peak table for sample 9 : lcm1**

Peak	Size [bp]	Conc. [pg/μl]	Molarity [pmol/l]	Observations
1	35	125.00	5,411.3	Lower Marker
2	345	1,739.96	7,635.4	
3	354	424.13	1,817.7	
4	10,380	75.00	10.9	Upper Marker

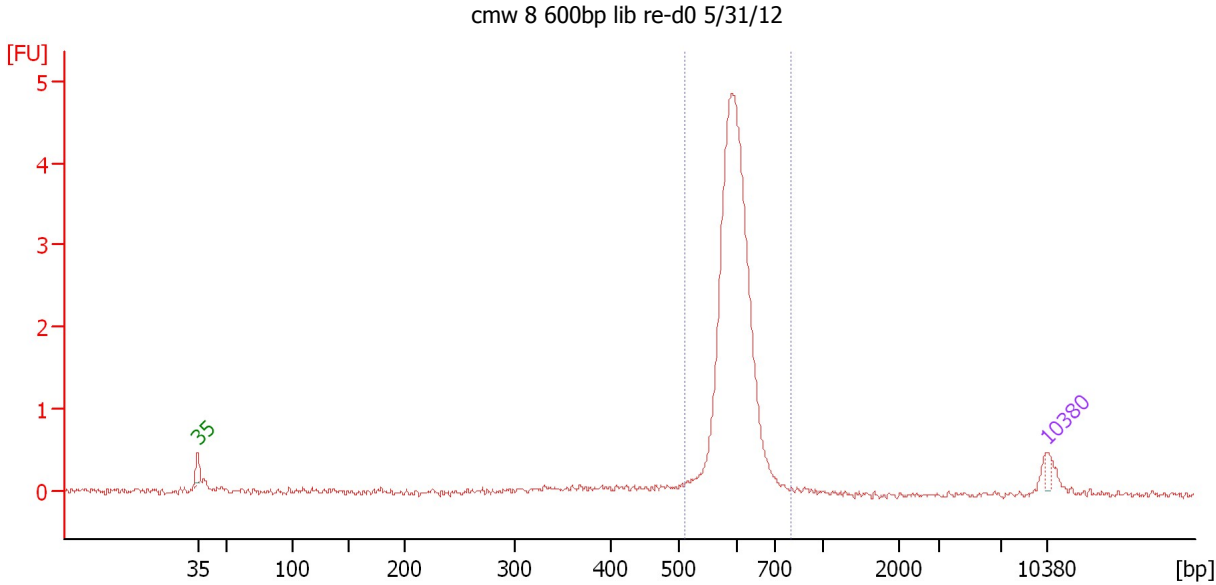
**Region table for sample 9 : lcm1**

From [bp]	To [bp]	Average Size [bp]	Molarity [pmol/l]	Conc. [pg/μl]	Corr. Area	% of Total	Size distribution in CV [%]	Color
249	672	378	17,028.0	4,094.61	31.8	89	18.1	Blue

Assay Class: High Sensitivity DNA Assay  
 Data Path: C:\...ents and Settings\Bioanalyzer\2012-06-01\2012-06-01\_001.xad

Created: 6/1/2012 9:52:23 AM  
 Modified: 6/1/2012 10:35:00 AM

**Electropherogram Summary Continued ...**



**Setpoint Deviations for sample 10 : cmw 8 600bp lib re-d0 5/31/12**

Slope Threshold : 0.1                                      Width Threshold [s] : 0.1  
 Height Threshold [FU] : 0.01

**Overall Results for sample 10 : cmw 8 600bp lib re-d0 5/31/12**

Number of peaks found: 0                                      Corr. Area 1: 16.2  
 Noise: 0.0

**Peak table for sample 10 : cmw 8 600bp lib re-d0 5/31/12**

Peak	Size [bp]	Conc. [pg/µl]	Molarity [pmol/l]	Observations
1	35	125.00	5,411.3	Lower Marker
2	10,380	75.00	10.9	Upper Marker

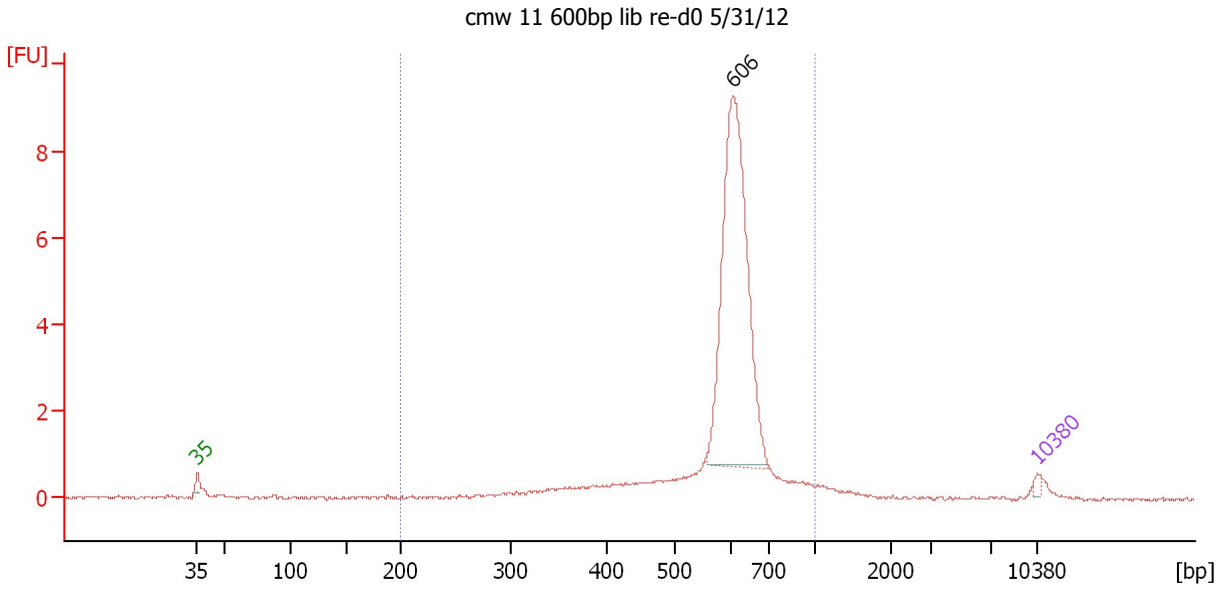
**Region table for sample 10 : cmw 8 600bp lib re-d0 5/31/12**

From [bp]	To [bp]	Average Size [bp]	Molarity [pmol/l]	Conc. [pg/µl]	Corr. Area	% of Total	Size distribution in CV [%]	Color
508	801	601	19,629.4	7,763.22	16.2	82	5.5	Blue

Assay Class: High Sensitivity DNA Assay  
 Data Path: C:\...ents and Settings\Bioanalyzer\2012-06-01\2012-06-01\_001.xad

Created: 6/1/2012 9:52:23 AM  
 Modified: 6/1/2012 10:35:00 AM

**Electropherogram Summary Continued ...**



**Setpoint Deviations for sample 11 : cmw 11 600bp lib re-d0 5/31/12**

Slope Threshold : 0.1                      Height Threshold [FU] : 0.01

**Overall Results for sample 11 : cmw 11 600bp lib re-d0 5/31/12**

Number of peaks found: 1                      Corr. Area 1: 38.0  
 Noise: 0.0

**Peak table for sample 11 : cmw 11 600bp lib re-d0 5/31/12**

Peak	Size [bp]	Conc. [pg/μl]	Molarity [pmol/l]	Observations
1	35	125.00	5,411.3	Lower Marker
2	606	7,817.63	19,539.6	
3	10,380	75.00	10.9	Upper Marker

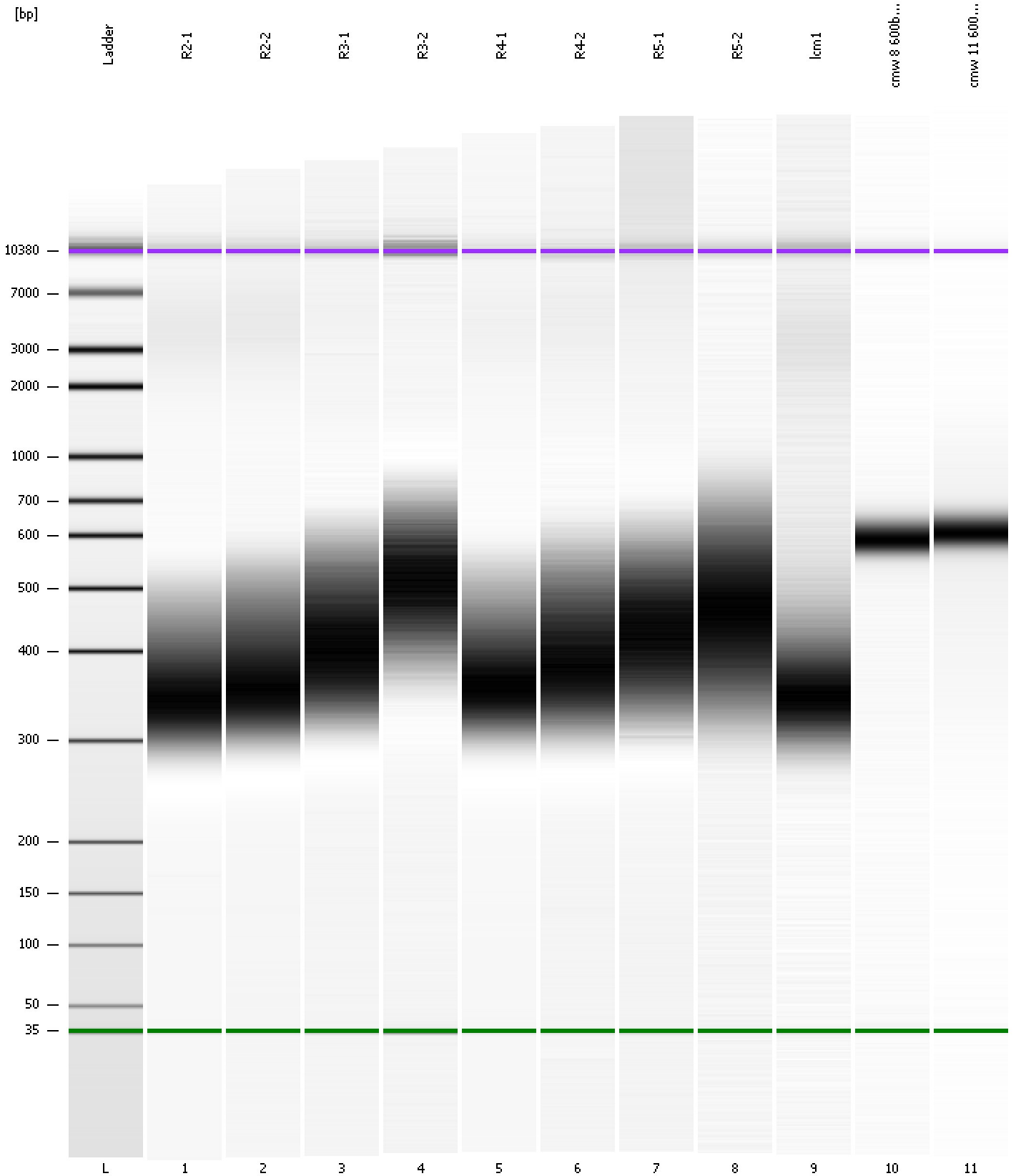
**Region table for sample 11 : cmw 11 600bp lib re-d0 5/31/12**

From [bp]	To [bp]	Average Size [bp]	Molarity [pmol/l]	Conc. [pg/μl]	Corr. Area	% of Total	Size distribution in CV [%]	Color
200	1,000	596	33,546.5	12,491.88	38.0	94	16.6	Blue

Assay Class: High Sensitivity DNA Assay  
Data Path: C:\...ents and Settings\Bioanalyzer\2012-06-01\2012-06-01\_001.xad

Created: 6/1/2012 9:52:23 AM  
Modified: 6/1/2012 10:35:00 AM

**Gel Image**





Assay Class: High Sensitivity DNA Assay  
 Data Path: C:\...ents and Settings\Bioanalyzer\2012-06-01\2012-06-01\_001.xad

Created: 6/1/2012 9:52:23 AM  
 Modified: 6/1/2012 10:35:00 AM

**Run Logbook**

Description	Number	Source	Category	Sub Category	Time	Time Zone	User	Host
Run ended on port 1 (Number of wells acquired: 12)		Instrument	Run		6/1/2012 10:33:42 AM	(GMT --07:00) Pacific Standard Time	UC Davis	D8XSMGH1
Run started on port 1 (File: C:\Documents and Settings\Bioanalyzer\2012-06-01\2012-06-01_001.xad)		Instrument	Run		6/1/2012 9:52:28 AM	(GMT --07:00) Pacific Standard Time	UC Davis	D8XSMGH1
Product Number : G2938B		Instrument	Run		6/1/2012 9:52:28 AM	(GMT --07:00) Pacific Standard Time	UC Davis	D8XSMGH1
Name :		Instrument	Run		6/1/2012 9:52:28 AM	(GMT --07:00) Pacific Standard Time	UC Davis	D8XSMGH1
Vendor : Agilent Technologies		Instrument	Run		6/1/2012 9:52:28 AM	(GMT --07:00) Pacific Standard Time	UC Davis	D8XSMGH1
Serial# : DE13701086		Instrument	Run		6/1/2012 9:52:28 AM	(GMT --07:00) Pacific Standard Time	UC Davis	D8XSMGH1
Firmware : C.01.069		Instrument	Run		6/1/2012 9:52:28 AM	(GMT --07:00) Pacific Standard Time	UC Davis	D8XSMGH1
Cartridge : Electrode		Instrument	Run		6/1/2012 9:52:28 AM	(GMT --07:00) Pacific Standard Time	UC Davis	D8XSMGH1