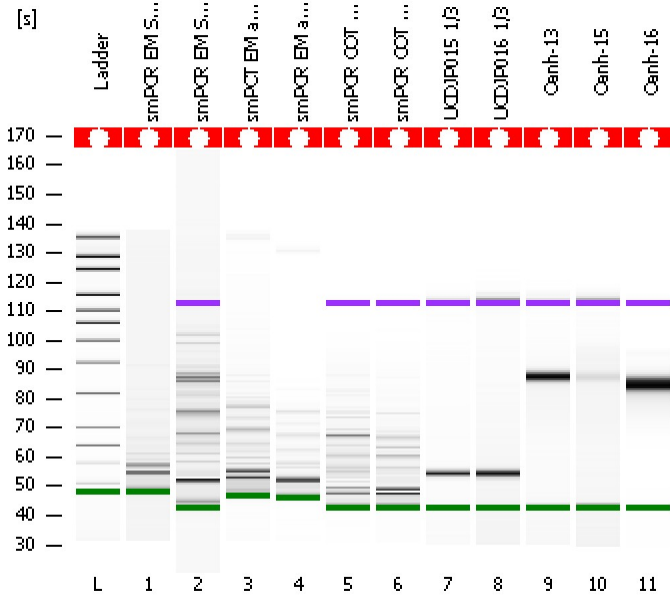


Assay Class: High Sensitivity DNA Assay
Data Path: C:\...ents and Settings\Bioanalyzer\2012-06-01\2012-06-01_002.xad

Created: 6/1/2012 11:33:09 AM
Modified: 6/1/2012 12:14:30 PM

Electrophoresis File Run Summary



Instrument Information:

Instrument Name: DE13701086 Firmware: C.01.069
Serial#: DE13701086 Type: G2938B

Assay Information:

Assay Origin Path: C:\Program Files\Agilent\2100 bioanalyzer\2100 expert\assays\dsDNA\High Sensitivity DNA.xsy
Assay Class: High Sensitivity DNA Assay
Version: 1.03
Assay Comments: Copyright © 2003-2010 Agilent Technologies

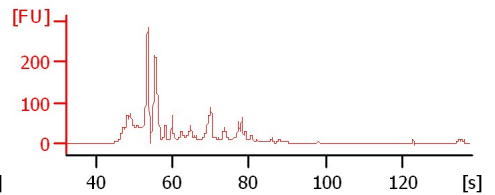
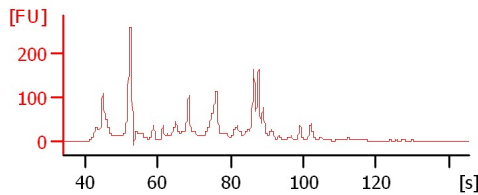
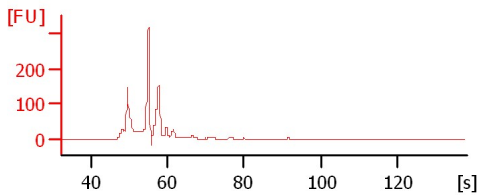
Chip Information:

Chip Lot #:
Reagent Kit Lot #:
Chip Comments:

smPCR EM SCPY-1

smPCR EM SCPY-2

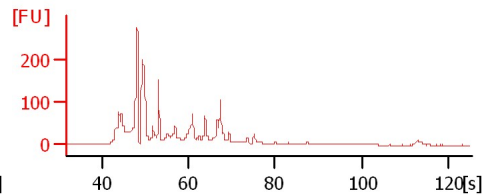
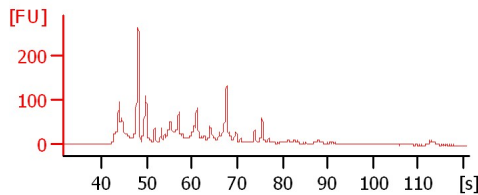
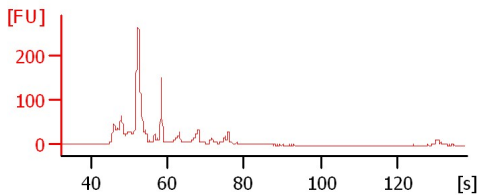
smPCT EM ax PY-1



smPCR EM ax VS-1

smPCR COT HI-1

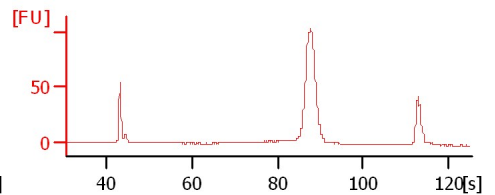
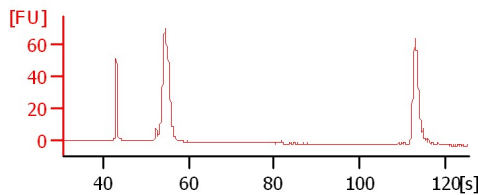
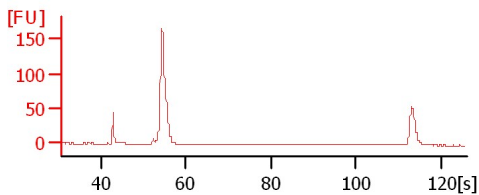
smPCR COT EP-1



UCDJP015 1/3

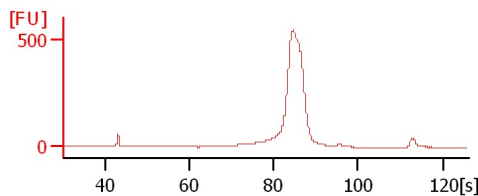
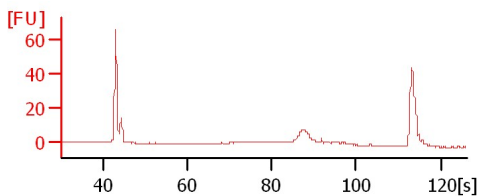
UCDJP016 1/3

Oanh-13



Oanh-15

Oanh-16



Assay Class: High Sensitivity DNA Assay
Data Path: C:\...ents and Settings\Bioanalyzer\2012-06-01\2012-06-01_002.xad

Created: 6/1/2012 11:33:09 AM
Modified: 6/1/2012 12:14:30 PM

Electrophoresis File Run Summary (Chip Summary)

Sample Name	Sample Comment	Rest. Digest	Status	Observation	Result Label	Result Color
smPCR EM SCPY-1		<input type="checkbox"/>	✓			
smPCR EM SCPY-2		<input type="checkbox"/>	✓			
smPCT EM ax PY-1		<input type="checkbox"/>	✓			
smPCR EM ax VS-1		<input type="checkbox"/>	✓			
smPCR COT HI-1		<input type="checkbox"/>	✓			
smPCR COT EP-1		<input type="checkbox"/>	✓			
UCDJP015 1/3		<input type="checkbox"/>	✓			
UCDJP016 1/3		<input type="checkbox"/>	✓			
Oanh-13		<input type="checkbox"/>	✓			
Oanh-15		<input type="checkbox"/>	✓			
Oanh-16		<input type="checkbox"/>	✓			
Ladder		<input type="checkbox"/>	✓			

Chip Lot #

Reagent Kit Lot #

Chip Comments :

Assay Class: High Sensitivity DNA Assay
Data Path: C:\...ents and Settings\Bioanalyzer\2012-06-01\2012-06-01_002.xad

Created: 6/1/2012 11:33:09 AM
Modified: 6/1/2012 12:14:30 PM

Electrophoresis Assay Details

General Analysis Settings

Number of Available Sample and Ladder Wells (Max.) : 12
Minimum Visible Range [s] : 32
Maximum Visible Range [s] : 138
Start Analysis Time Range [s] : 33
End Analysis Time Range [s] : 137.5
Ladder Concentration [pg/μl] : 1950
Uses Standard Area for Ladder Fragments
Lower Marker Concentration [pg/μl] : 125
Upper Marker Concentration [pg/μl] : 75
Used Upper Marker for Quantitation
Standard Curve Fit is Point to Point
Show Data Aligned to Lower and Upper Marker

Integrator Settings

Integration Start Time [s] : 33.05
Integration End Time [s] : 137
Slope Threshold : 0.8
Height Threshold [FU] : 5
Area Threshold : 0.1
Width Threshold [s] : 0.6
Baseline Plateau [s] : 0.5

Filter Settings

Filter Width [s] : 0.5
Polynomial Order : 4

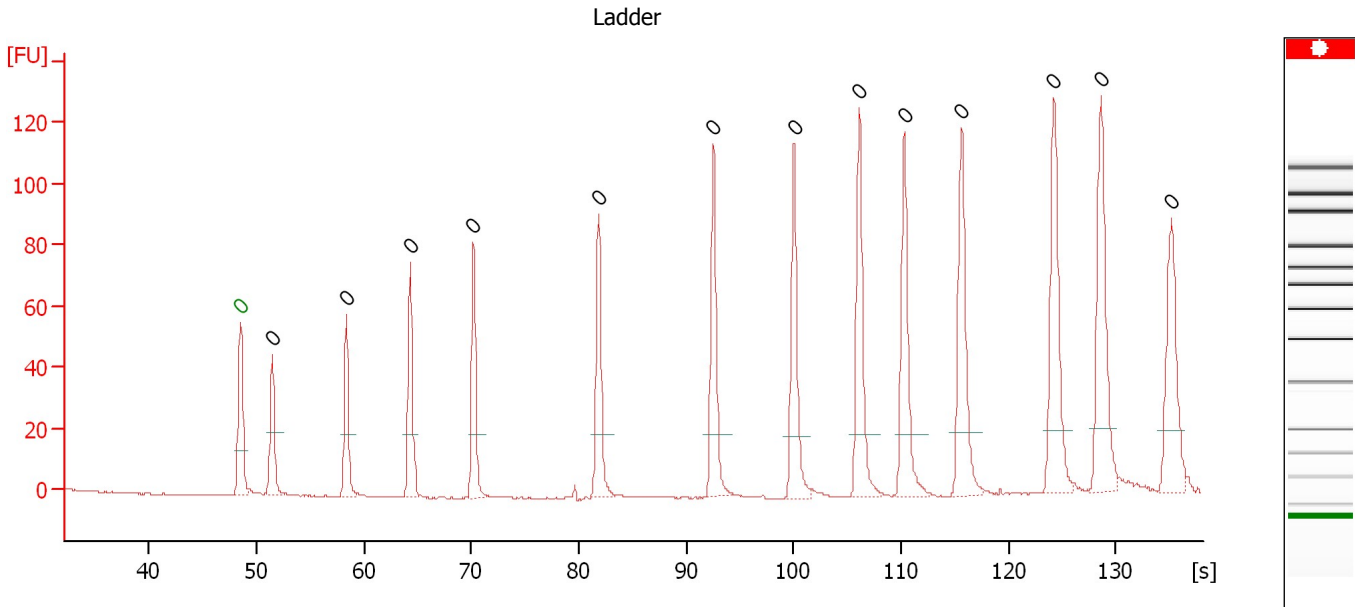
Ladder

Ladder Peak	Size	Area
1	35	160
2	50	210
3	100	208
4	150	221
5	200	242
6	300	270
7	400	305
8	500	306
9	600	336
10	700	321
11	1000	366
12	2000	413
13	3000	411
14	7000	400
15	10380	214

Assay Class: High Sensitivity DNA Assay
 Data Path: C:\...ents and Settings\Bioanalyzer\2012-06-01\2012-06-01_002.xad

Created: 6/1/2012 11:33:09 AM
 Modified: 6/1/2012 12:14:30 PM

Electropherogram Summary



Overall Results for Ladder

Noise: 0.1

Peak table for Ladder

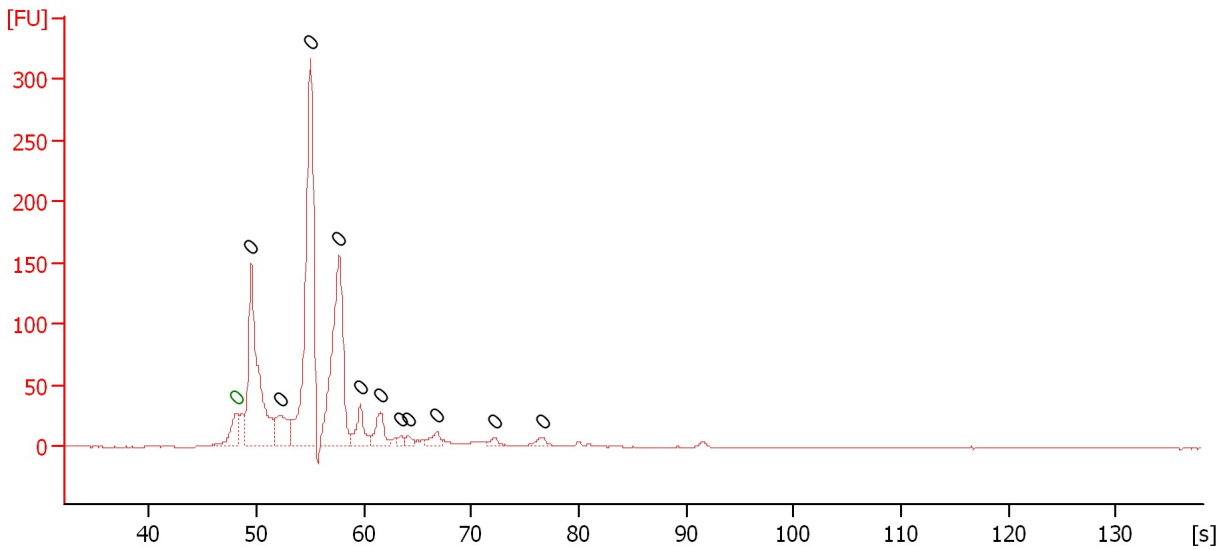
Peak	Size [bp]	Conc. [pg/μl]	Molarity [pmol/l]	Observations
1	0	0.00	0.0	Lower Marker
2	0	0.00	0.0	Ladder Peak
3	0	0.00	0.0	Ladder Peak
4	0	0.00	0.0	Ladder Peak
5	0	0.00	0.0	Ladder Peak
6	0	0.00	0.0	Ladder Peak
7	0	0.00	0.0	Ladder Peak
8	0	0.00	0.0	Ladder Peak
9	0	0.00	0.0	Ladder Peak
10	0	0.00	0.0	Ladder Peak
11	0	0.00	0.0	Ladder Peak
12	0	0.00	0.0	Ladder Peak
13	0	0.00	0.0	Ladder Peak
14	0	0.00	0.0	Ladder Peak

Assay Class: High Sensitivity DNA Assay
 Data Path: C:\...ents and Settings\Bioanalyzer\2012-06-01\2012-06-01_002.xad

Created: 6/1/2012 11:33:09 AM
 Modified: 6/1/2012 12:14:30 PM

Electropherogram Summary Continued ...

smPCR EM SCPY-1



Overall Results for sample 1 : smPCR EM SCPY-1

Number of peaks found: 11 Noise: 0.1

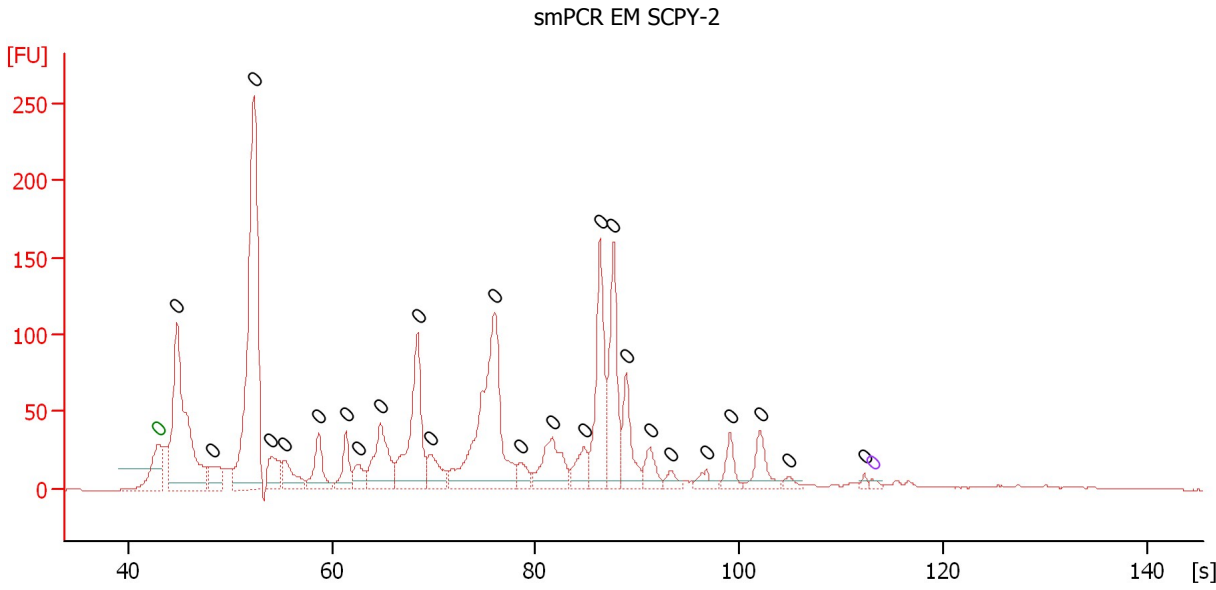
Peak table for sample 1 : smPCR EM SCPY-1

Peak	Size [bp]	Conc. [pg/μl]	Molarity [pmol/l]	Observations
1	0	0.00	0.0	Lower Marker
2	0	0.00	0.0	
3	0	0.00	0.0	
4	0	0.00	0.0	
5	0	0.00	0.0	
6	0	0.00	0.0	
7	0	0.00	0.0	
8	0	0.00	0.0	
9	0	0.00	0.0	
10	0	0.00	0.0	
11	0	0.00	0.0	
12	0	0.00	0.0	

Assay Class: High Sensitivity DNA Assay
 Data Path: C:\...ents and Settings\Bioanalyzer\2012-06-01\2012-06-01_002.xad

Created: 6/1/2012 11:33:09 AM
 Modified: 6/1/2012 12:14:30 PM

Electropherogram Summary Continued ...



Overall Results for sample 2 : smPCR EM SCPY-2

Number of peaks found: 25 Noise: 0.2

Peak table for sample 2 : smPCR EM SCPY-2

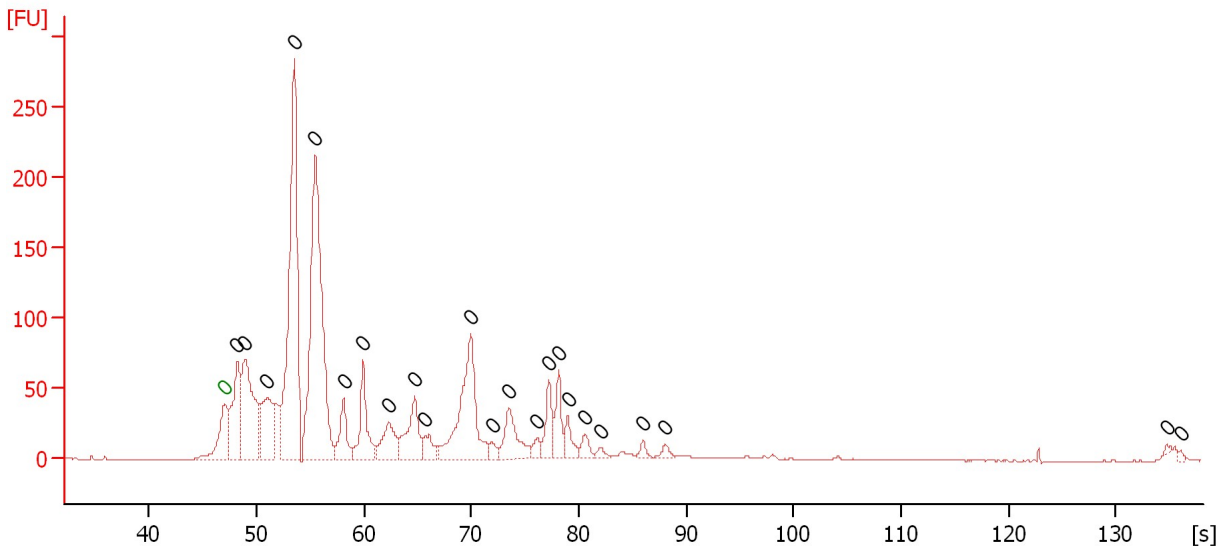
Peak	Size [bp]	Conc. [pg/μl]	Molarity [pmol/l]	Observations
1	0	0.00	0.0	Lower Marker
2	0	0.00	0.0	
3	0	0.00	0.0	
4	0	0.00	0.0	
5	0	0.00	0.0	
6	0	0.00	0.0	
7	0	0.00	0.0	
8	0	0.00	0.0	
9	0	0.00	0.0	
10	0	0.00	0.0	
11	0	0.00	0.0	
12	0	0.00	0.0	
13	0	0.00	0.0	
14	0	0.00	0.0	
15	0	0.00	0.0	
16	0	0.00	0.0	
17	0	0.00	0.0	
18	0	0.00	0.0	
19	0	0.00	0.0	
20	0	0.00	0.0	
21	0	0.00	0.0	
22	0	0.00	0.0	
23	0	0.00	0.0	
24	0	0.00	0.0	
25	0	0.00	0.0	
26	0	0.00	0.0	
27	0	0.00	0.0	Upper Marker

Assay Class: High Sensitivity DNA Assay
 Data Path: C:\...ents and Settings\Bioanalyzer\2012-06-01\2012-06-01_002.xad

Created: 6/1/2012 11:33:09 AM
 Modified: 6/1/2012 12:14:30 PM

Electropherogram Summary Continued ...

smPCT EM ax PY-1



Overall Results for sample 3 : smPCT EM ax PY-1

Number of peaks found: 23 Noise: 0.1

Peak table for sample 3 : smPCT EM ax PY-1

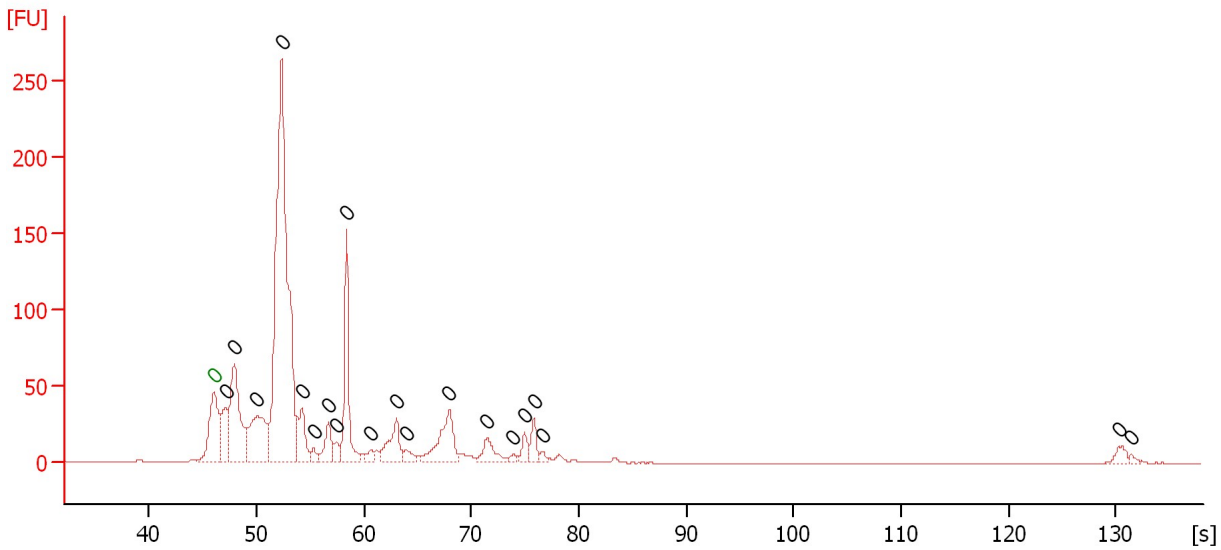
Peak	Size [bp]	Conc. [pg/μl]	Molarity [pmol/l]	Observations
1	0	0.00	0.0	Lower Marker
2	0	0.00	0.0	
3	0	0.00	0.0	
4	0	0.00	0.0	
5	0	0.00	0.0	
6	0	0.00	0.0	
7	0	0.00	0.0	
8	0	0.00	0.0	
9	0	0.00	0.0	
10	0	0.00	0.0	
11	0	0.00	0.0	
12	0	0.00	0.0	
13	0	0.00	0.0	
14	0	0.00	0.0	
15	0	0.00	0.0	
16	0	0.00	0.0	
17	0	0.00	0.0	
18	0	0.00	0.0	
19	0	0.00	0.0	
20	0	0.00	0.0	
21	0	0.00	0.0	
22	0	0.00	0.0	
23	0	0.00	0.0	
24	0	0.00	0.0	

Assay Class: High Sensitivity DNA Assay
 Data Path: C:\...ents and Settings\Bioanalyzer\2012-06-01\2012-06-01_002.xad

Created: 6/1/2012 11:33:09 AM
 Modified: 6/1/2012 12:14:30 PM

Electropherogram Summary Continued ...

smPCR EM ax VS-1



Overall Results for sample 4 : smPCR EM ax VS-1

Number of peaks found: 20 Noise: 0.1

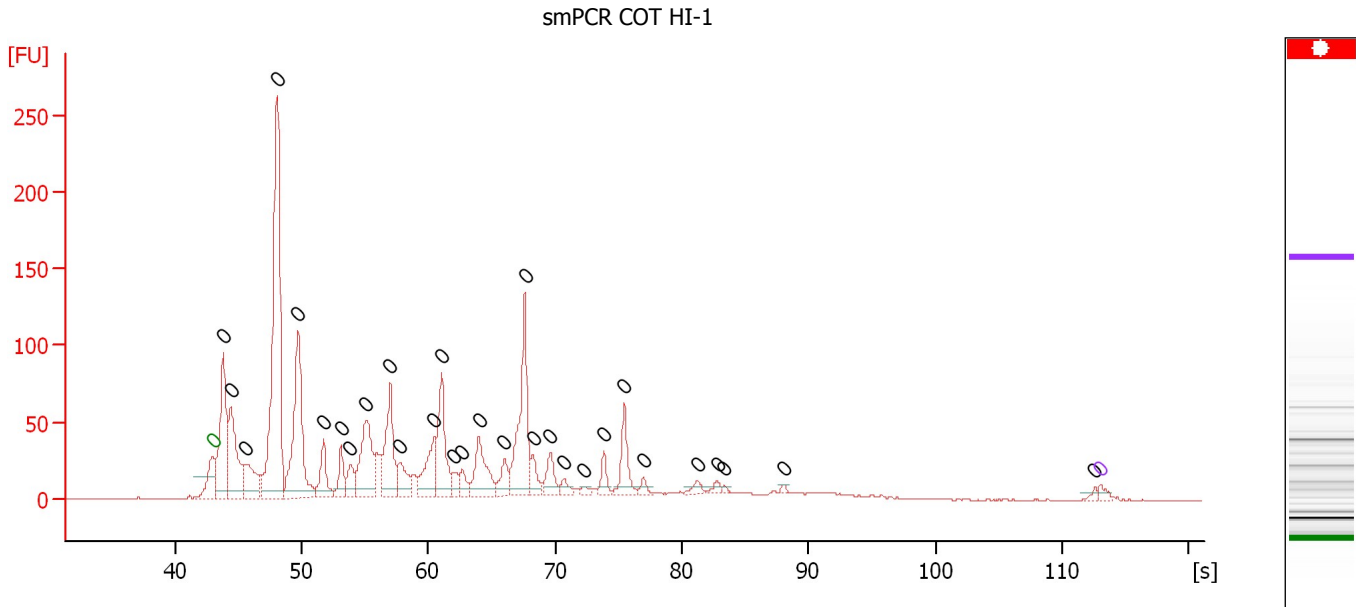
Peak table for sample 4 : smPCR EM ax VS-1

Peak	Size [bp]	Conc. [pg/µl]	Molarity [pmol/l]	Observations
1	0	0.00	0.0	Lower Marker
2	0	0.00	0.0	
3	0	0.00	0.0	
4	0	0.00	0.0	
5	0	0.00	0.0	
6	0	0.00	0.0	
7	0	0.00	0.0	
8	0	0.00	0.0	
9	0	0.00	0.0	
10	0	0.00	0.0	
11	0	0.00	0.0	
12	0	0.00	0.0	
13	0	0.00	0.0	
14	0	0.00	0.0	
15	0	0.00	0.0	
16	0	0.00	0.0	
17	0	0.00	0.0	
18	0	0.00	0.0	
19	0	0.00	0.0	
20	0	0.00	0.0	
21	0	0.00	0.0	

Assay Class: High Sensitivity DNA Assay
 Data Path: C:\...ents and Settings\Bioanalyzer\2012-06-01\2012-06-01_002.xad

Created: 6/1/2012 11:33:09 AM
 Modified: 6/1/2012 12:14:30 PM

Electropherogram Summary Continued ...



Overall Results for sample 5 : smPCR COT HI-1

Number of peaks found: 30 Noise: 0.2

Peak table for sample 5 : smPCR COT HI-1

Peak	Size [bp]	Conc. [pg/μl]	Molarity [pmol/l]	Observations
1	0	0.00	0.0	Lower Marker
2	0	0.00	0.0	
3	0	0.00	0.0	
4	0	0.00	0.0	
5	0	0.00	0.0	
6	0	0.00	0.0	
7	0	0.00	0.0	
8	0	0.00	0.0	
9	0	0.00	0.0	
10	0	0.00	0.0	
11	0	0.00	0.0	
12	0	0.00	0.0	
13	0	0.00	0.0	
14	0	0.00	0.0	
15	0	0.00	0.0	
16	0	0.00	0.0	
17	0	0.00	0.0	
18	0	0.00	0.0	
19	0	0.00	0.0	
20	0	0.00	0.0	
21	0	0.00	0.0	
22	0	0.00	0.0	
23	0	0.00	0.0	
24	0	0.00	0.0	
25	0	0.00	0.0	
26	0	0.00	0.0	
27	0	0.00	0.0	

Assay Class: High Sensitivity DNA Assay
Data Path: C:\...ents and Settings\Bioanalyzer\2012-06-01\2012-06-01_002.xad

Created: 6/1/2012 11:33:09 AM
Modified: 6/1/2012 12:14:30 PM

Electropherogram Summary Continued ...

... Peak table for sample 5 : smPCR COT HI-1

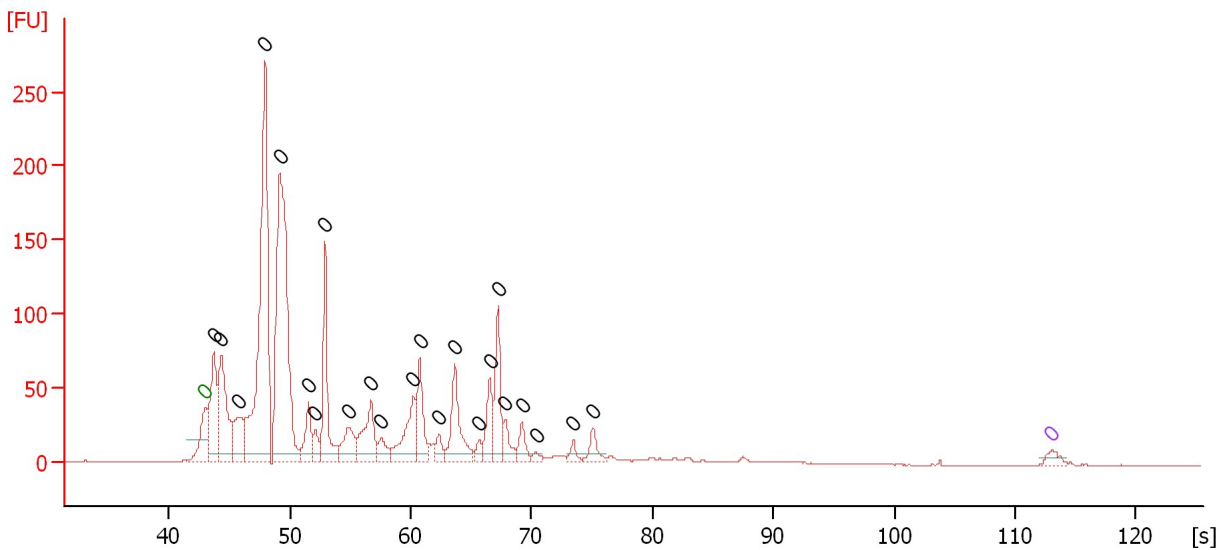
Peak	Size [bp]	Conc. [pg/ μ l]	Molarity [pmol/l]	Observations
28	0	0.00	0.0	
29	0	0.00	0.0	
30	0	0.00	0.0	
31	0	0.00	0.0	
32	▶ 0	0.00	0.0	Upper Marker

Assay Class: High Sensitivity DNA Assay
 Data Path: C:\...ents and Settings\Bioanalyzer\2012-06-01\2012-06-01_002.xad

Created: 6/1/2012 11:33:09 AM
 Modified: 6/1/2012 12:14:30 PM

Electropherogram Summary Continued ...

smPCR COT EP-1



Overall Results for sample 6 : smPCR COT EP-1

Number of peaks found: 23 Noise: 0.1

Peak table for sample 6 : smPCR COT EP-1

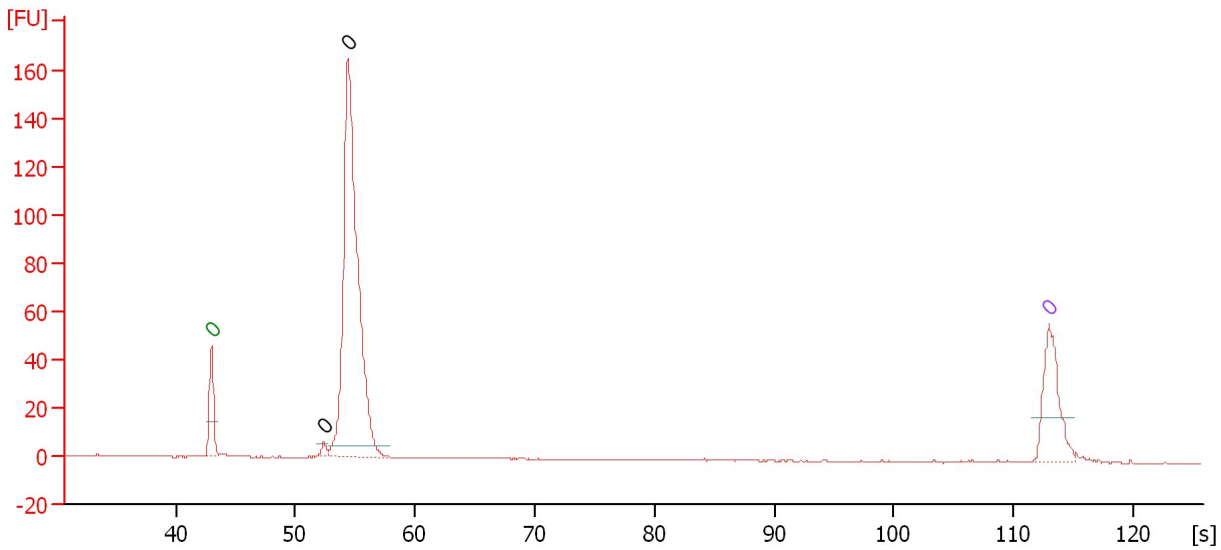
Peak	Size [bp]	Conc. [pg/μl]	Molarity [pmol/l]	Observations
1	0	0.00	0.0	Lower Marker
2	0	0.00	0.0	
3	0	0.00	0.0	
4	0	0.00	0.0	
5	0	0.00	0.0	
6	0	0.00	0.0	
7	0	0.00	0.0	
8	0	0.00	0.0	
9	0	0.00	0.0	
10	0	0.00	0.0	
11	0	0.00	0.0	
12	0	0.00	0.0	
13	0	0.00	0.0	
14	0	0.00	0.0	
15	0	0.00	0.0	
16	0	0.00	0.0	
17	0	0.00	0.0	
18	0	0.00	0.0	
19	0	0.00	0.0	
20	0	0.00	0.0	
21	0	0.00	0.0	
22	0	0.00	0.0	
23	0	0.00	0.0	
24	0	0.00	0.0	
25	0	0.00	0.0	Upper Marker

Assay Class: High Sensitivity DNA Assay
 Data Path: C:\...ents and Settings\Bioanalyzer\2012-06-01\2012-06-01_002.xad

Created: 6/1/2012 11:33:09 AM
 Modified: 6/1/2012 12:14:30 PM

Electropherogram Summary Continued ...

UCDJP015 1/3



Overall Results for sample 7 : UCDJP015 1/3

Number of peaks found: 2 Noise: 0.1

Peak table for sample 7 : UCDJP015 1/3

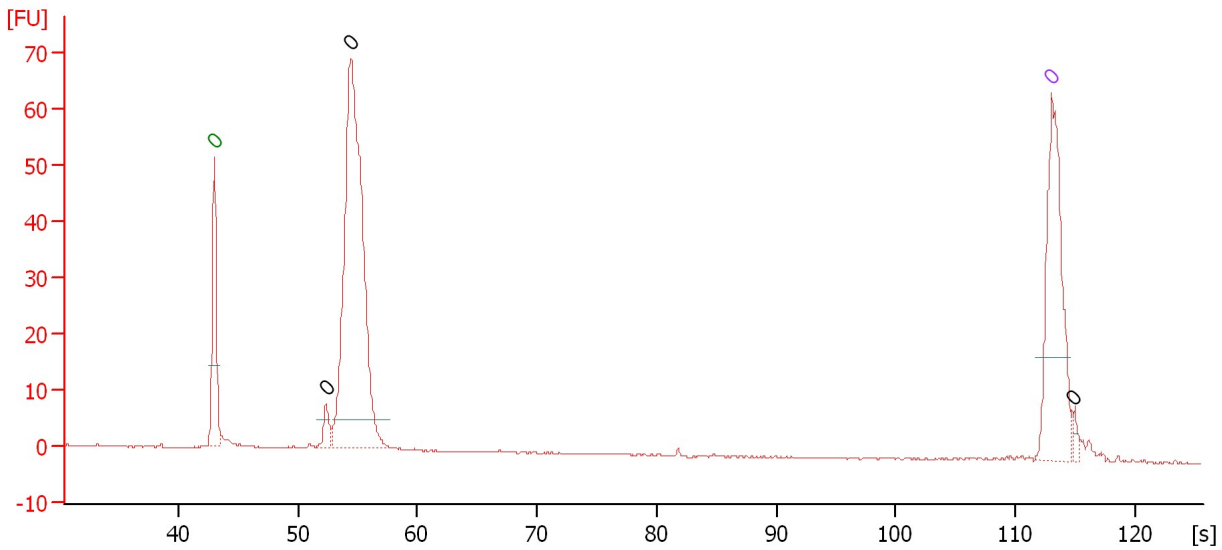
Peak	Size [bp]	Conc. [pg/μl]	Molarity [pmol/l]	Observations
1	0	0.00	0.0	Lower Marker
2	0	0.00	0.0	
3	0	0.00	0.0	
4	0	0.00	0.0	Upper Marker

Assay Class: High Sensitivity DNA Assay
Data Path: C:\...ents and Settings\Bioanalyzer\2012-06-01\2012-06-01_002.xad

Created: 6/1/2012 11:33:09 AM
Modified: 6/1/2012 12:14:30 PM

Electropherogram Summary Continued ...

UCDJP016 1/3



Overall Results for sample 8 : UCDJP016 1/3

Number of peaks found: 3 Noise: 0.1

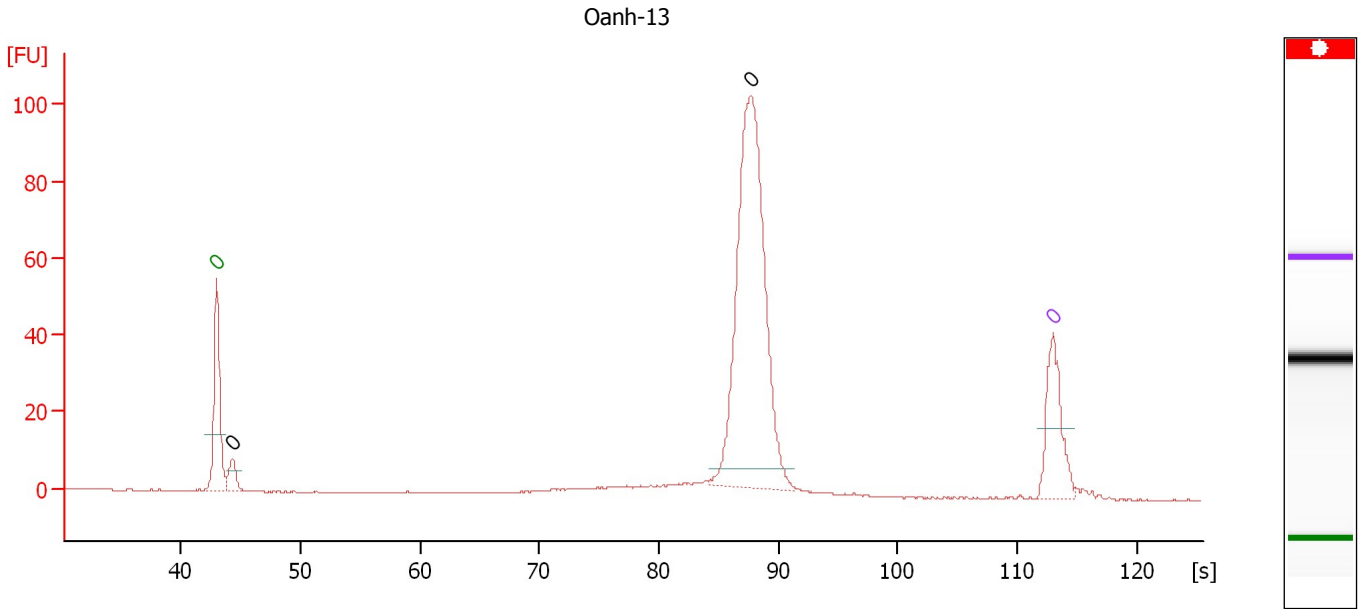
Peak table for sample 8 : UCDJP016 1/3

Peak	Size [bp]	Conc. [pg/μl]	Molarity [pmol/l]	Observations
1	0	0.00	0.0	Lower Marker
2	0	0.00	0.0	
3	0	0.00	0.0	
4	0	0.00	0.0	Upper Marker
5	0	0.00	0.0	

Assay Class: High Sensitivity DNA Assay
 Data Path: C:\...ents and Settings\Bioanalyzer\2012-06-01\2012-06-01_002.xad

Created: 6/1/2012 11:33:09 AM
 Modified: 6/1/2012 12:14:30 PM

Electropherogram Summary Continued ...



Overall Results for sample 9 : Oanh-13

Number of peaks found: 2 Noise: 0.2

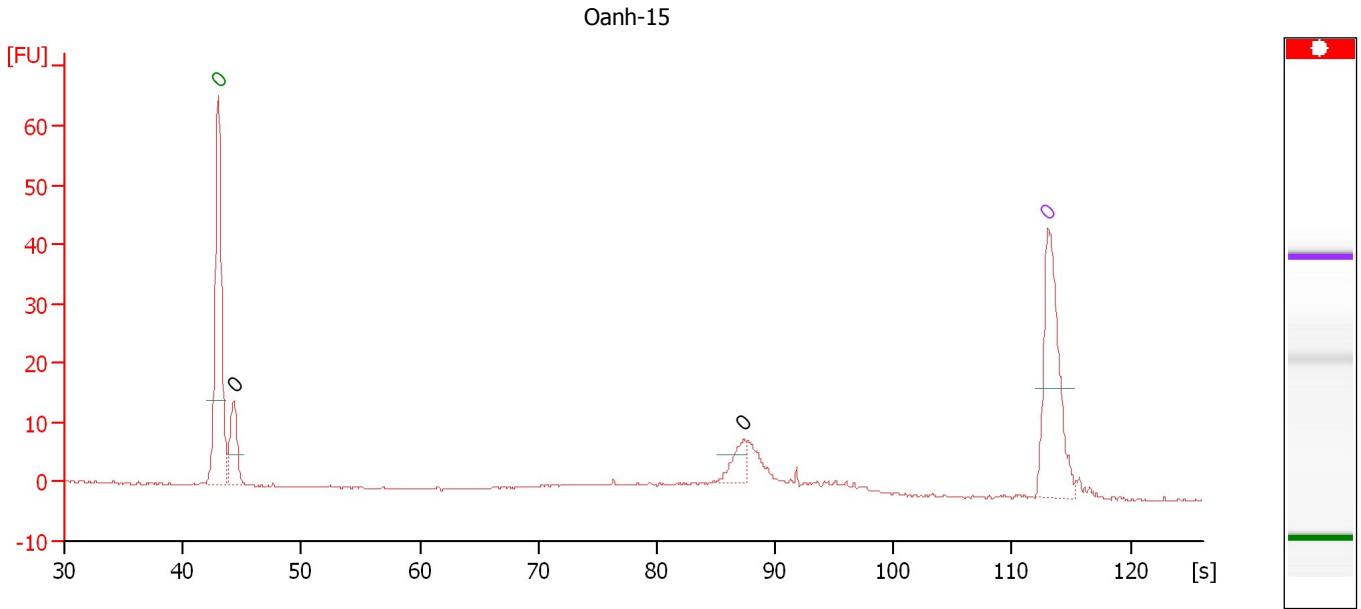
Peak table for sample 9 : Oanh-13

Peak	Size [bp]	Conc. [pg/μl]	Molarity [pmol/l]	Observations
1	0	0.00	0.0	Lower Marker
2	0	0.00	0.0	
3	0	0.00	0.0	
4	0	0.00	0.0	Upper Marker

Assay Class: High Sensitivity DNA Assay
 Data Path: C:\...ents and Settings\Bioanalyzer\2012-06-01\2012-06-01_002.xad

Created: 6/1/2012 11:33:09 AM
 Modified: 6/1/2012 12:14:30 PM

Electropherogram Summary Continued ...



Overall Results for sample 10 : Oanh-15

Number of peaks found: 2 Noise: 0.1

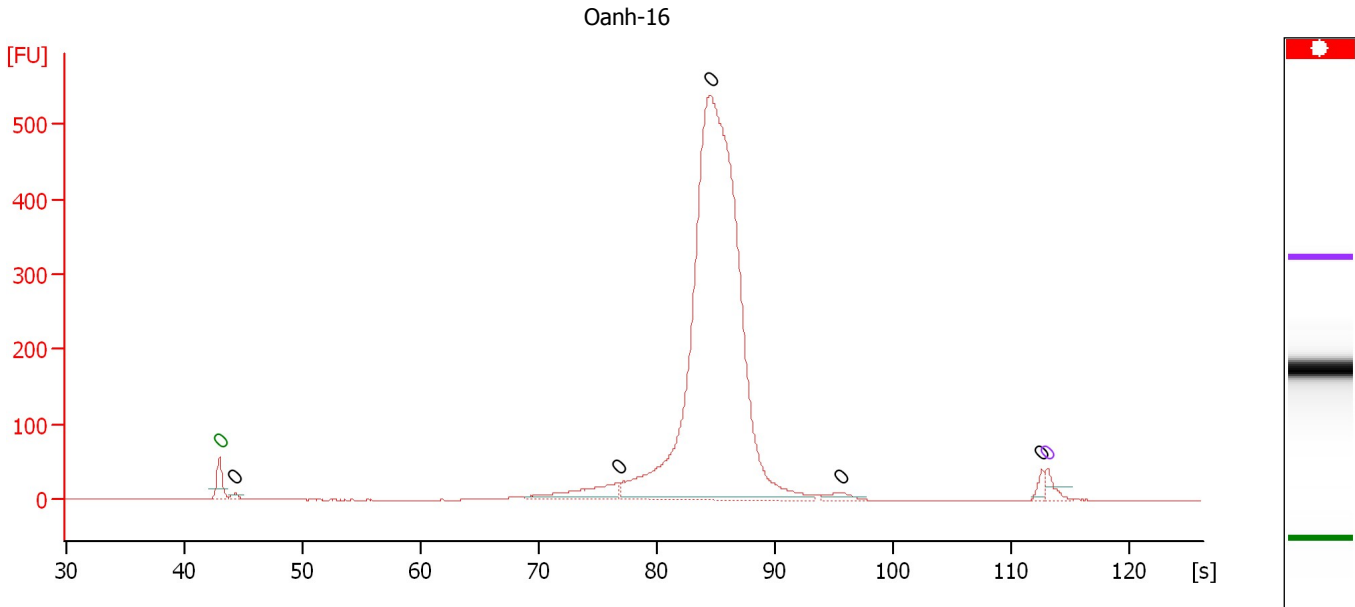
Peak table for sample 10 : Oanh-15

Peak	Size [bp]	Conc. [pg/μl]	Molarity [pmol/l]	Observations
1	0	0.00	0.0	Lower Marker
2	0	0.00	0.0	
3	0	0.00	0.0	
4	0	0.00	0.0	Upper Marker

Assay Class: High Sensitivity DNA Assay
Data Path: C:\...ents and Settings\Bioanalyzer\2012-06-01\2012-06-01_002.xad

Created: 6/1/2012 11:33:09 AM
Modified: 6/1/2012 12:14:30 PM

Electropherogram Summary Continued ...



Overall Results for sample 11 : Oanh-16

Number of peaks found: 5 Noise: 0.1

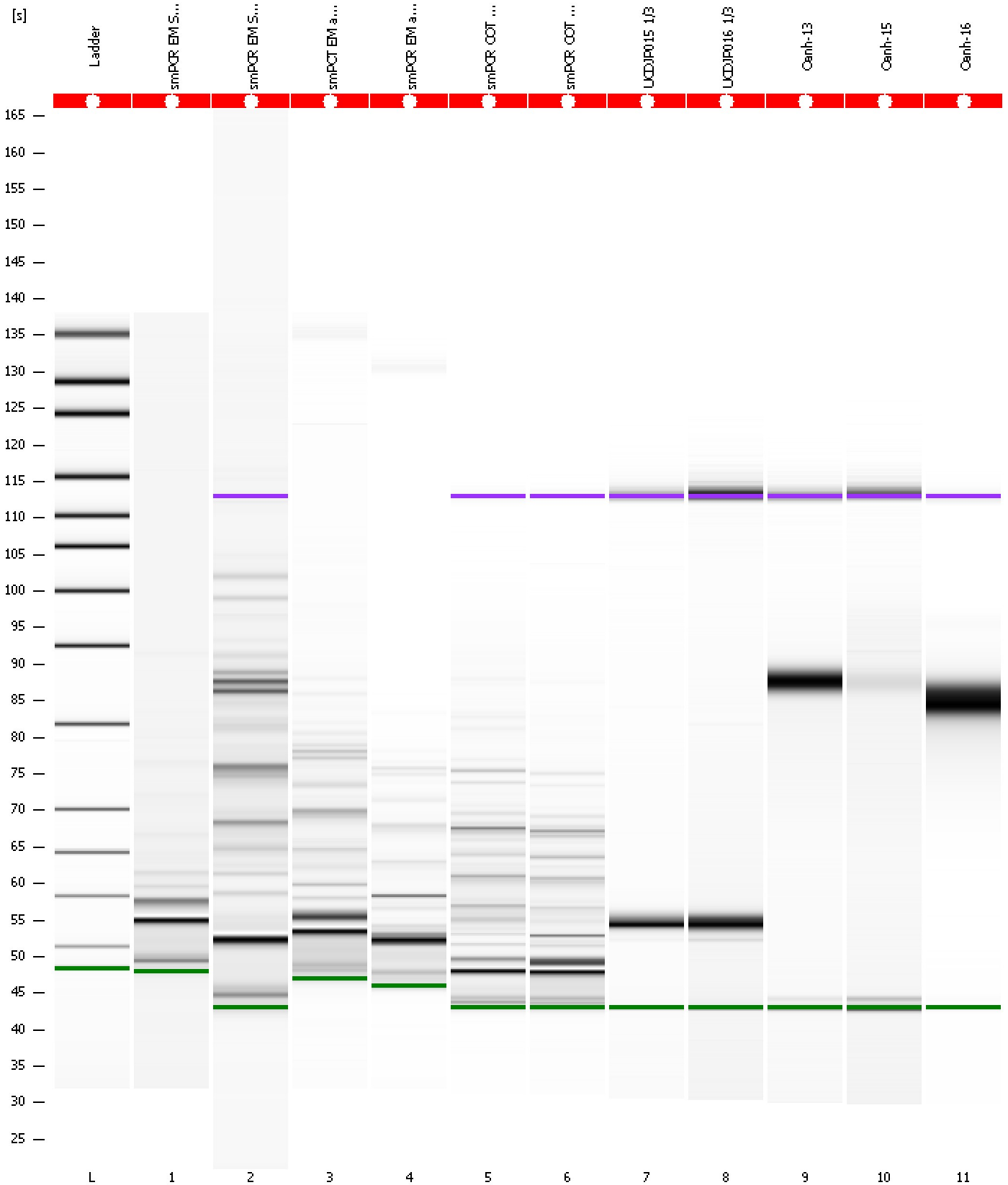
Peak table for sample 11 : Oanh-16

Peak	Size [bp]	Conc. [pg/μl]	Molarity [pmol/l]	Observations
1	0	0.00	0.0	Lower Marker
2	0	0.00	0.0	
3	0	0.00	0.0	
4	0	0.00	0.0	
5	0	0.00	0.0	
6	0	0.00	0.0	
7	0	0.00	0.0	Upper Marker

Assay Class: High Sensitivity DNA Assay
Data Path: C:\...ents and Settings\Bioanalyzer\2012-06-01\2012-06-01_002.xad

Created: 6/1/2012 11:33:09 AM
Modified: 6/1/2012 12:14:30 PM

Gel Image



Assay Class: High Sensitivity DNA Assay
 Data Path: C:\...ents and Settings\Bioanalyzer\2012-06-01\2012-06-01_002.xad

Created: 6/1/2012 11:33:09 AM
 Modified: 6/1/2012 12:14:30 PM

Run Logbook

Description	Number	Source	Category	Sub Category	Time	Time Zone	User	Host
Run ended on port 1 (Number of wells acquired: 12)		Instrument	Run		6/1/2012 12:14:26 PM	(GMT --07:00) Pacific Standard Time	UC Davis	D8XSMGH1
Run started on port 1 (File: C:\Documents and Settings\Bioanalyzer\2012-06-01\2012-06-01_002.xad)		Instrument	Run		6/1/2012 11:33:14 AM	(GMT --07:00) Pacific Standard Time	UC Davis	D8XSMGH1
Product Number : G2938B		Instrument	Run		6/1/2012 11:33:14 AM	(GMT --07:00) Pacific Standard Time	UC Davis	D8XSMGH1
Name :		Instrument	Run		6/1/2012 11:33:14 AM	(GMT --07:00) Pacific Standard Time	UC Davis	D8XSMGH1
Vendor : Agilent Technologies		Instrument	Run		6/1/2012 11:33:14 AM	(GMT --07:00) Pacific Standard Time	UC Davis	D8XSMGH1
Serial# : DE13701086		Instrument	Run		6/1/2012 11:33:14 AM	(GMT --07:00) Pacific Standard Time	UC Davis	D8XSMGH1
Firmware : C.01.069		Instrument	Run		6/1/2012 11:33:14 AM	(GMT --07:00) Pacific Standard Time	UC Davis	D8XSMGH1
Cartridge : Electrode		Instrument	Run		6/1/2012 11:33:14 AM	(GMT --07:00) Pacific Standard Time	UC Davis	D8XSMGH1