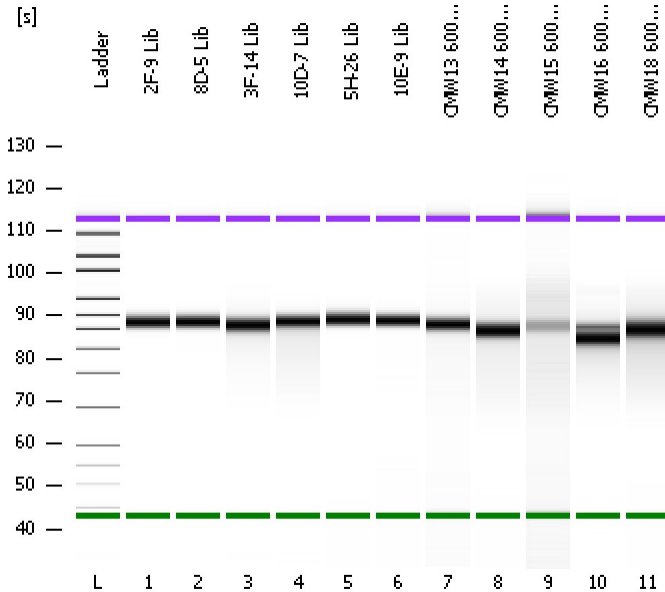


Assay Class: High Sensitivity DNA Assay
Data Path: C:\...ents and Settings\Bioanalyzer\2012-06-01\2012-06-01_004.xad

Created: 6/1/2012 4:20:21 PM
Modified: 6/1/2012 5:08:57 PM

Electrophoresis File Run Summary



Instrument Information:

Instrument Name: DE13701086 Firmware: C.01.069
Serial#: DE13701086 Type: G2938B

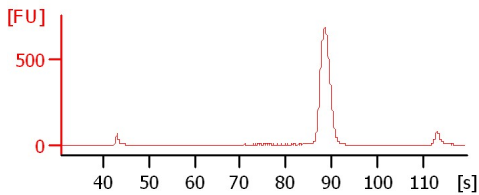
Assay Information:

Assay Origin Path: C:\Program Files\Agilent\2100 bioanalyzer\2100 expert\assays\dsDNA\High Sensitivity DNA.xsy
Assay Class: High Sensitivity DNA Assay
Version: 1.03
Assay Comments: Copyright © 2003-2010 Agilent Technologies

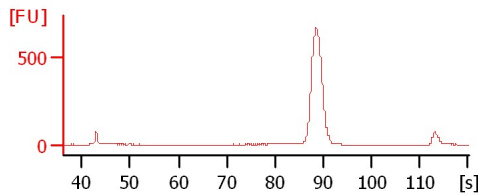
Chip Information:

Chip Lot #: Reagent Kit Lot #: Chip Comments:

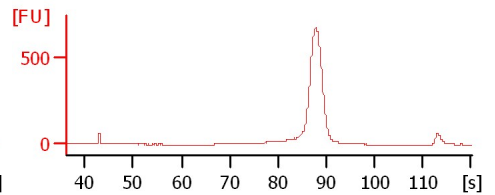
2F-9 Lib



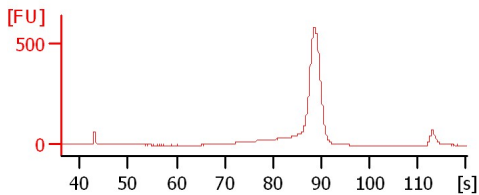
8D-5 Lib



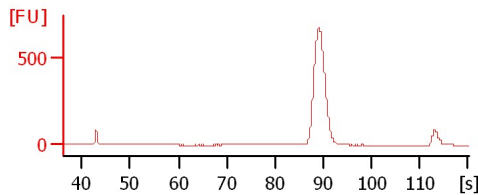
3F-14 Lib



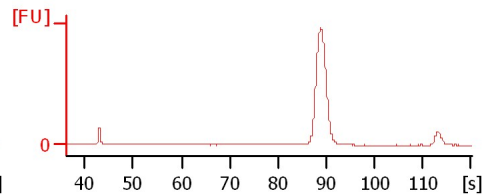
10D-7 Lib



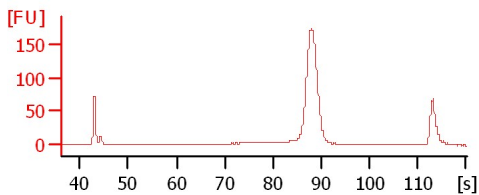
5H-26 Lib



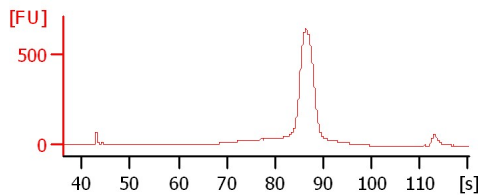
10E-9 Lib



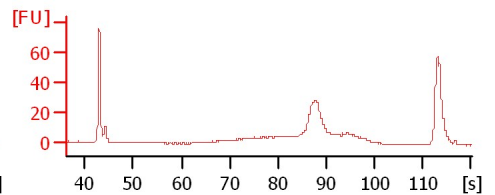
CMW13 600bp Lib



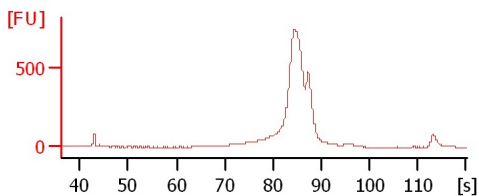
CMW14 600bp Lib



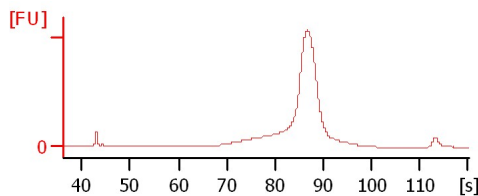
CMW15 600bp Lib



CMW16 600bp Lib



CMW18 600bp Lib



Assay Class: High Sensitivity DNA Assay
Data Path: C:\...ents and Settings\Bioanalyzer\2012-06-01\2012-06-01_004.xad

Created: 6/1/2012 4:20:21 PM
Modified: 6/1/2012 5:08:57 PM

Electrophoresis File Run Summary (Chip Summary)

Sample Name	Sample Comment	Rest. Digest	Status	Observation	Result Label	Result Color
2F-9 Lib		<input type="checkbox"/>	✓			
8D-5 Lib		<input type="checkbox"/>	✓			
3F-14 Lib		<input type="checkbox"/>	✓			
10D-7 Lib		<input type="checkbox"/>	✓			
5H-26 Lib		<input type="checkbox"/>	✓			
10E-9 Lib		<input type="checkbox"/>	✓			
CMW13 600bp Lib		<input type="checkbox"/>	✓			
CMW14 600bp Lib		<input type="checkbox"/>	✓			
CMW15 600bp Lib		<input type="checkbox"/>	✓			
CMW16 600bp Lib		<input type="checkbox"/>	✓			
CMW18 600bp Lib		<input type="checkbox"/>	✓			
Ladder		<input type="checkbox"/>	✓			

Chip Lot #

Reagent Kit Lot #

Chip Comments :

Assay Class: High Sensitivity DNA Assay
Data Path: C:\...ents and Settings\Bioanalyzer\2012-06-01\2012-06-01_004.xad

Created: 6/1/2012 4:20:21 PM
Modified: 6/1/2012 5:08:57 PM

Electrophoresis Assay Details

General Analysis Settings

Number of Available Sample and Ladder Wells (Max.) : 12
Minimum Visible Range [s] : 32
Maximum Visible Range [s] : 138
Start Analysis Time Range [s] : 33
End Analysis Time Range [s] : 137.5
Ladder Concentration [pg/μl] : 1950
Uses Standard Area for Ladder Fragments
Lower Marker Concentration [pg/μl] : 125
Upper Marker Concentration [pg/μl] : 75
Used Upper Marker for Quantitation
Standard Curve Fit is Point to Point
Show Data Aligned to Lower and Upper Marker

Integrator Settings

Integration Start Time [s] : 33.05
Integration End Time [s] : 137
Slope Threshold : 0.8
Height Threshold [FU] : 5
Area Threshold : 0.1
Width Threshold [s] : 0.6
Baseline Plateau [s] : 0.5

Filter Settings

Filter Width [s] : 0.5
Polynomial Order : 4

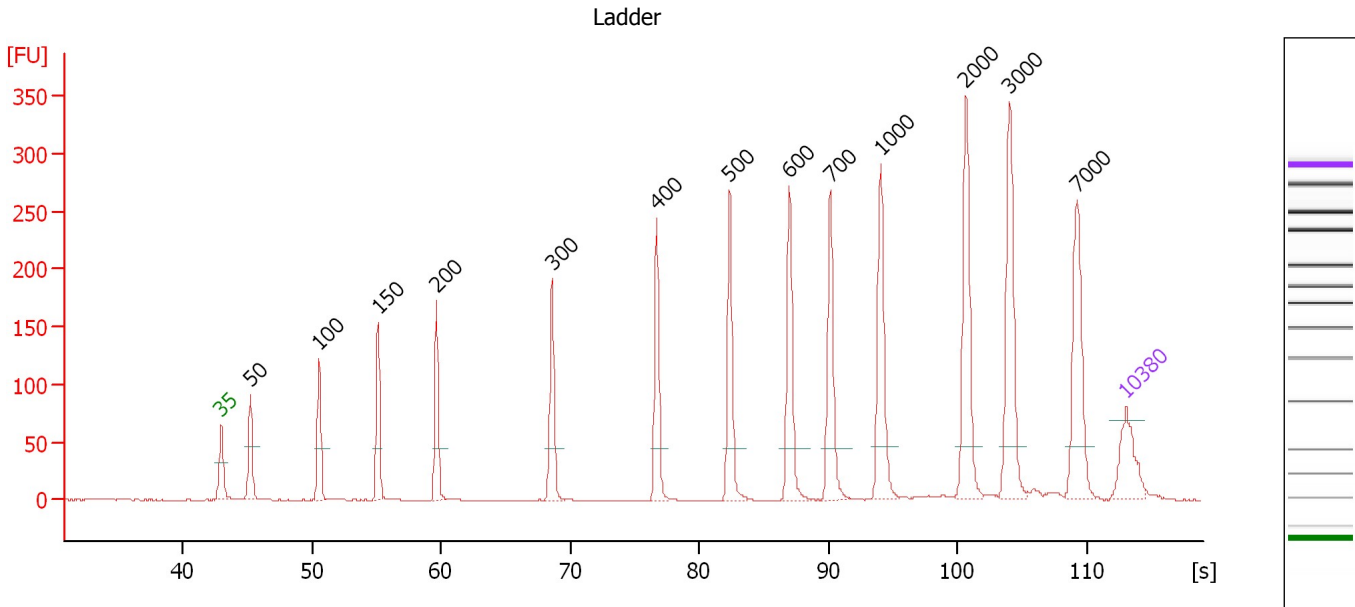
Ladder

Ladder Peak	Size	Area
1	35	160
2	50	210
3	100	208
4	150	221
5	200	242
6	300	270
7	400	305
8	500	306
9	600	336
10	700	321
11	1000	366
12	2000	413
13	3000	411
14	7000	400
15	10380	214

Assay Class: High Sensitivity DNA Assay
 Data Path: C:\...ents and Settings\Bioanalyzer\2012-06-01\2012-06-01_004.xad

Created: 6/1/2012 4:20:21 PM
 Modified: 6/1/2012 5:08:57 PM

Electropherogram Summary



Overall Results for Ladder

Noise: 0.1

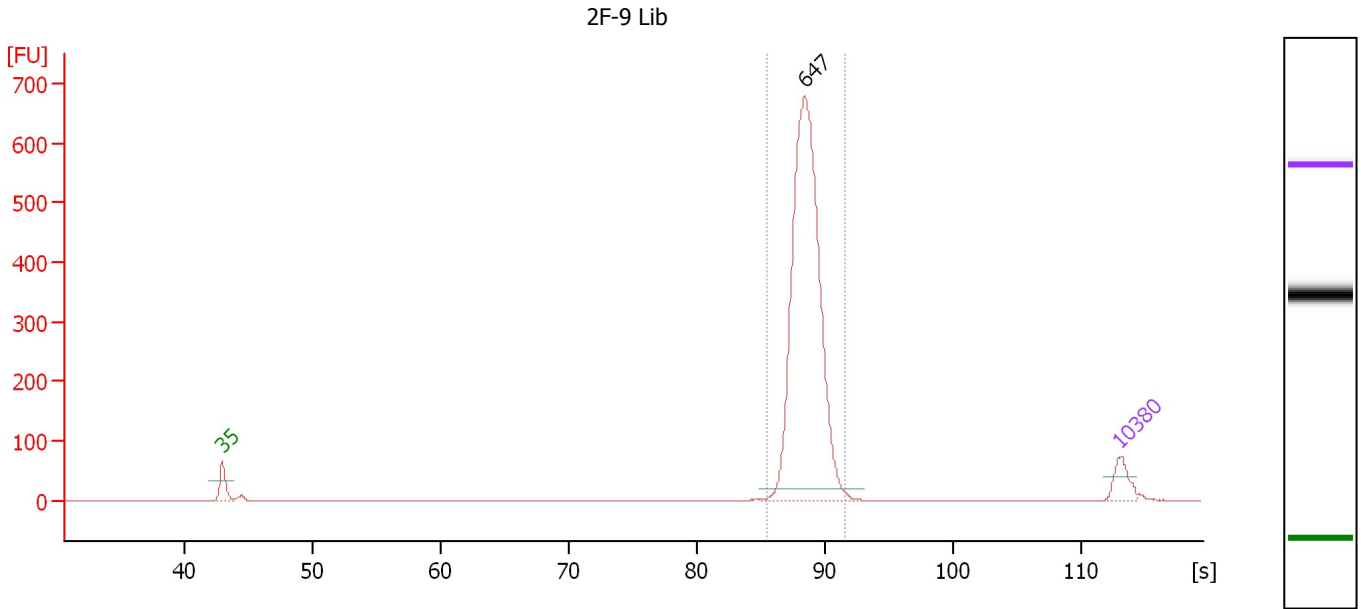
Peak table for Ladder

Peak	Size [bp]	Conc. [pg/μl]	Molarity [pmol/l]	Observations
1	35	125.00	5,411.3	Lower Marker
2	50	150.00	4,545.5	Ladder Peak
3	100	150.00	2,272.7	Ladder Peak
4	150	150.00	1,515.2	Ladder Peak
5	200	150.00	1,136.4	Ladder Peak
6	300	150.00	757.6	Ladder Peak
7	400	150.00	568.2	Ladder Peak
8	500	150.00	454.5	Ladder Peak
9	600	150.00	378.8	Ladder Peak
10	700	150.00	324.7	Ladder Peak
11	1,000	150.00	227.3	Ladder Peak
12	2,000	150.00	113.6	Ladder Peak
13	3,000	150.00	75.8	Ladder Peak
14	7,000	150.00	32.5	Ladder Peak
15	10,380	75.00	10.9	Upper Marker

Assay Class: High Sensitivity DNA Assay
 Data Path: C:\...ents and Settings\Bioanalyzer\2012-06-01\2012-06-01_004.xad

Created: 6/1/2012 4:20:21 PM
 Modified: 6/1/2012 5:08:57 PM

Electropherogram Summary Continued ...



Setpoint Deviations for sample 1 : 2F-9 Lib

Height Threshold [FU] : 20

Overall Results for sample 1 : 2F-9 Lib

Number of peaks found: 1 Corr. Area 1: 2,002.6
 Noise: 0.2

Peak table for sample 1 : 2F-9 Lib

Peak	Size [bp]	Conc. [pg/μl]	Molarity [pmol/l]	Observations
1	35	125.00	5,411.3	Lower Marker
2	647	2,141.27	5,014.3	
3	10,380	75.00	10.9	Upper Marker

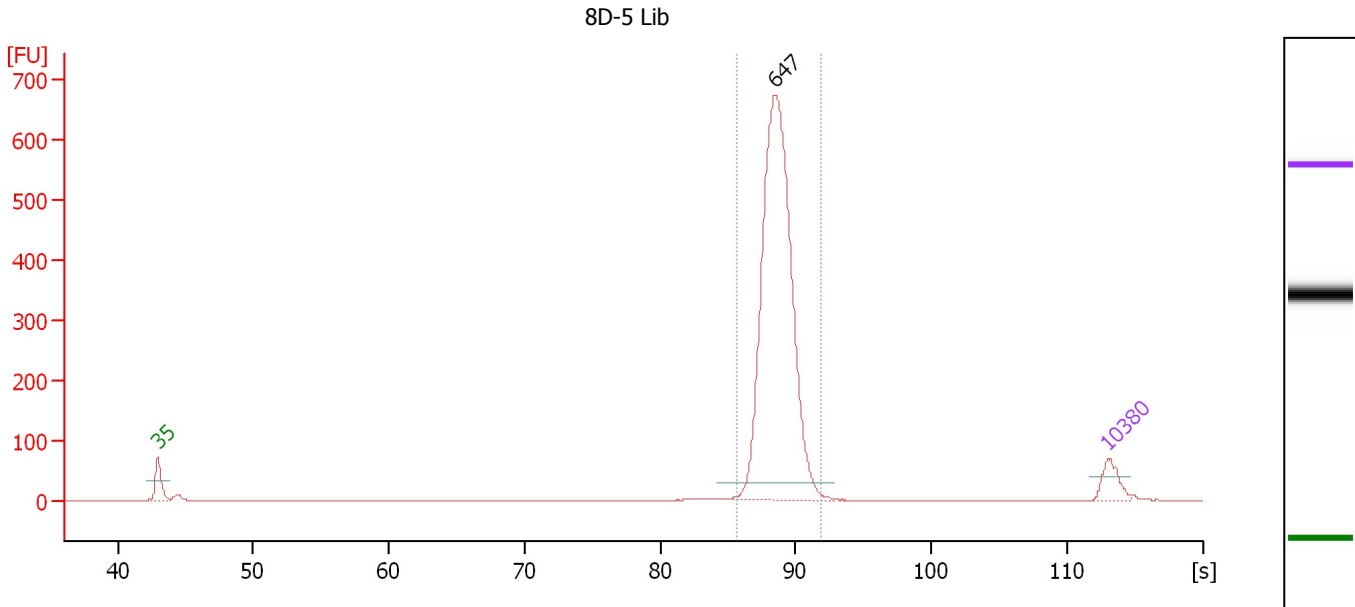
Region table for sample 1 : 2F-9 Lib

From [s]	To [s]	Average Size [bp]	Molarity [pmol/l]	Conc. [pg/μl]	Corr. Area % of Total	Size distribution in CV [%]	Color
85.57	91.63	654	4,957.8	2,135.91	2,002.6 97	5.2	Blue

Assay Class: High Sensitivity DNA Assay
 Data Path: C:\...ents and Settings\Bioanalyzer\2012-06-01\2012-06-01_004.xad

Created: 6/1/2012 4:20:21 PM
 Modified: 6/1/2012 5:08:57 PM

Electropherogram Summary Continued ...



Setpoint Deviations for sample 2 : 8D-5 Lib

Height Threshold [FU] : 30

Overall Results for sample 2 : 8D-5 Lib

Number of peaks found: 1 Corr. Area 1: 2,024.0
 Noise: 0.2

Peak table for sample 2 : 8D-5 Lib

Peak	Size [bp]	Conc. [pg/μl]	Molarity [pmol/l]	Observations
1	35	125.00	5,411.3	Lower Marker
2	647	2,142.54	5,016.0	
3	10,380	75.00	10.9	Upper Marker

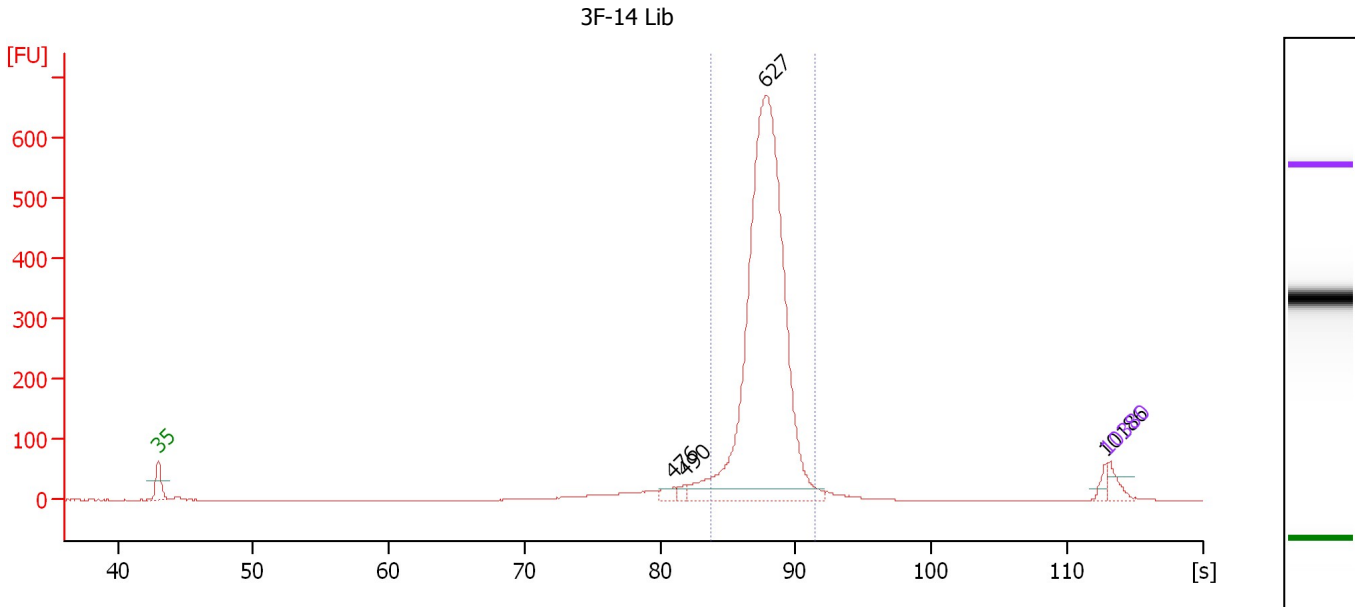
Region table for sample 2 : 8D-5 Lib

From [s]	To [s]	Average Size [bp]	Molarity [pmol/l]	Conc. [pg/μl]	Corr. Area % of Total	Size distribution in CV [%]	Color
85.75	91.92	656	4,944.3	2,137.70	2,024.0 96	5.5	Blue

Assay Class: High Sensitivity DNA Assay
 Data Path: C:\...ents and Settings\Bioanalyzer\2012-06-01\2012-06-01_004.xad

Created: 6/1/2012 4:20:21 PM
 Modified: 6/1/2012 5:08:57 PM

Electropherogram Summary Continued ...



Setpoint Deviations for sample 3 : 3F-14 Lib

Height Threshold [FU] : 20

Overall Results for sample 3 : 3F-14 Lib

Number of peaks found: 4 Corr. Area 1: 2,438.1
 Noise: 0.1

Peak table for sample 3 : 3F-14 Lib

Peak	Size [bp]	Conc. [pg/µl]	Molarity [pmol/l]	Observations
1	35	125.00	5,411.3	Lower Marker
2	476	56.01	178.2	
3	490	39.02	120.7	
4	627	4,198.16	10,146.6	
5	10,186	40.42	6.0	
6	10,380	75.00	10.9	Upper Marker

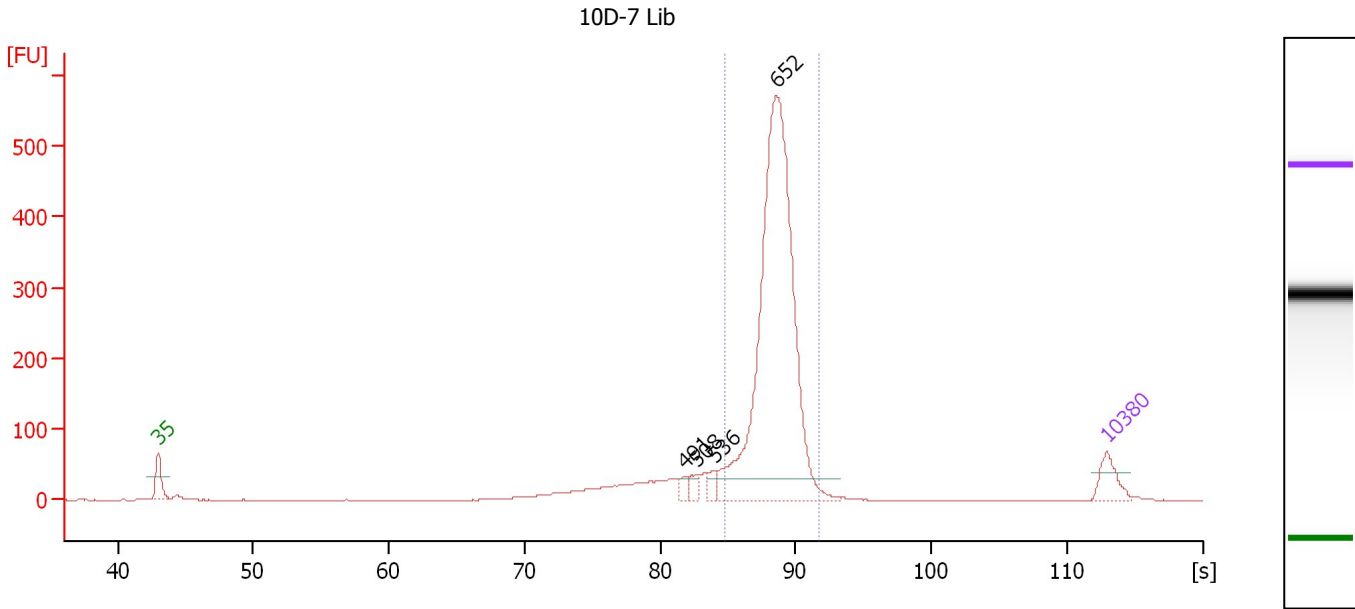
Region table for sample 3 : 3F-14 Lib

From [s]	To [s]	Average Size [bp]	Molarity [pmol/l]	Conc. [pg/µl]	Corr. Area	% of Total	Size distribution in CV [%]	Color
83.71	91.39	629	9,918.4	4,104.66	2,438.1	88	6.2	Blue

Assay Class: High Sensitivity DNA Assay
 Data Path: C:\...ents and Settings\Bioanalyzer\2012-06-01\2012-06-01_004.xad

Created: 6/1/2012 4:20:21 PM
 Modified: 6/1/2012 5:08:57 PM

Electropherogram Summary Continued ...



Setpoint Deviations for sample 4 : 10D-7 Lib

Height Threshold [FU] : 30

Overall Results for sample 4 : 10D-7 Lib

Number of peaks found: 4 Corr. Area 1: 1,862.0
 Noise: 0.1

Peak table for sample 4 : 10D-7 Lib

Peak	Size [bp]	Conc. [pg/µl]	Molarity [pmol/l]	Observations
1	35	125.00	5,411.3	Lower Marker
2	491	32.03	98.8	
3	508	40.10	119.6	
4	536	42.23	119.4	
5	652	2,060.24	4,788.1	
6	10,380	75.00	10.9	Upper Marker

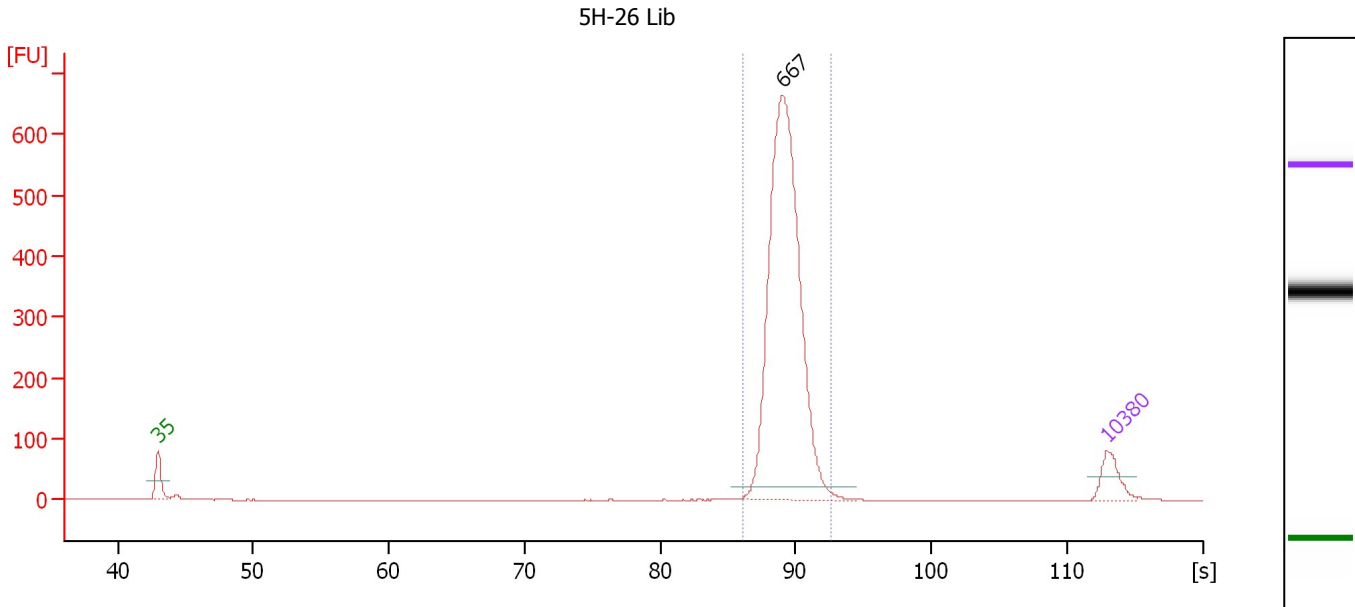
Region table for sample 4 : 10D-7 Lib

From [s]	To [s]	Average Size [bp]	Molarity [pmol/l]	Conc. [pg/µl]	Corr. Area	% of Total	Size distribution in CV [%]	Color
84.83	91.68	652	4,697.1	2,015.15	1,862.0	79	6.3	Blue

Assay Class: High Sensitivity DNA Assay
 Data Path: C:\...ents and Settings\Bioanalyzer\2012-06-01\2012-06-01_004.xad

Created: 6/1/2012 4:20:21 PM
 Modified: 6/1/2012 5:08:57 PM

Electropherogram Summary Continued ...



Setpoint Deviations for sample 5 : 5H-26 Lib

Height Threshold [FU] : 20

Overall Results for sample 5 : 5H-26 Lib

Number of peaks found: 1 Corr. Area 1: 2,038.5
 Noise: 0.1

Peak table for sample 5 : 5H-26 Lib

Peak	Size [bp]	Conc. [pg/μl]	Molarity [pmol/l]	Observations
1	35	125.00	5,411.3	Lower Marker
2	667	1,760.41	3,998.9	
3	10,380	75.00	10.9	Upper Marker

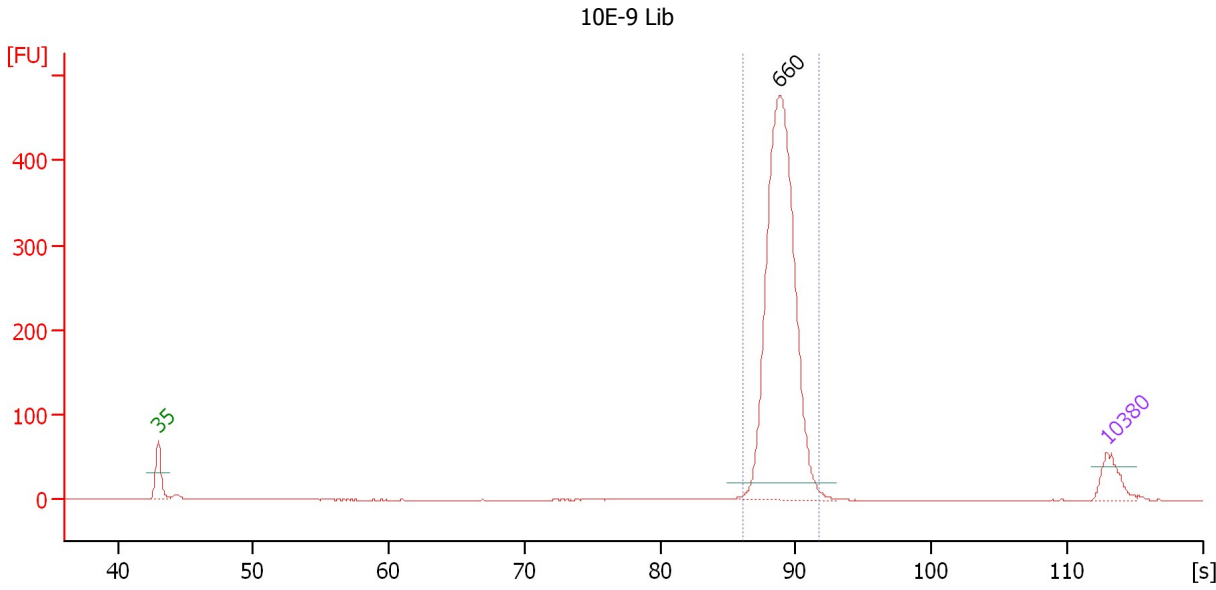
Region table for sample 5 : 5H-26 Lib

From [s]	To [s]	Average Size [bp]	Molarity [pmol/l]	Conc. [pg/μl]	Corr. Area % of Total	Size distribution in CV [%]	Color
86.17	92.55	678	3,917.4	1,748.34	2,038.5 97	6.6	Blue

Assay Class: High Sensitivity DNA Assay
 Data Path: C:\...ents and Settings\Bioanalyzer\2012-06-01\2012-06-01_004.xad

Created: 6/1/2012 4:20:21 PM
 Modified: 6/1/2012 5:08:57 PM

Electropherogram Summary Continued ...



Setpoint Deviations for sample 6 : 10E-9 Lib

Height Threshold [FU] : 20

Overall Results for sample 6 : 10E-9 Lib

Number of peaks found: 1 Corr. Area 1: 1,347.2
 Noise: 0.1

Peak table for sample 6 : 10E-9 Lib

Peak	Size [bp]	Conc. [pg/μl]	Molarity [pmol/l]	Observations
1	35	125.00	5,411.3	Lower Marker
2	660	1,684.04	3,868.4	
3	10,380	75.00	10.9	Upper Marker

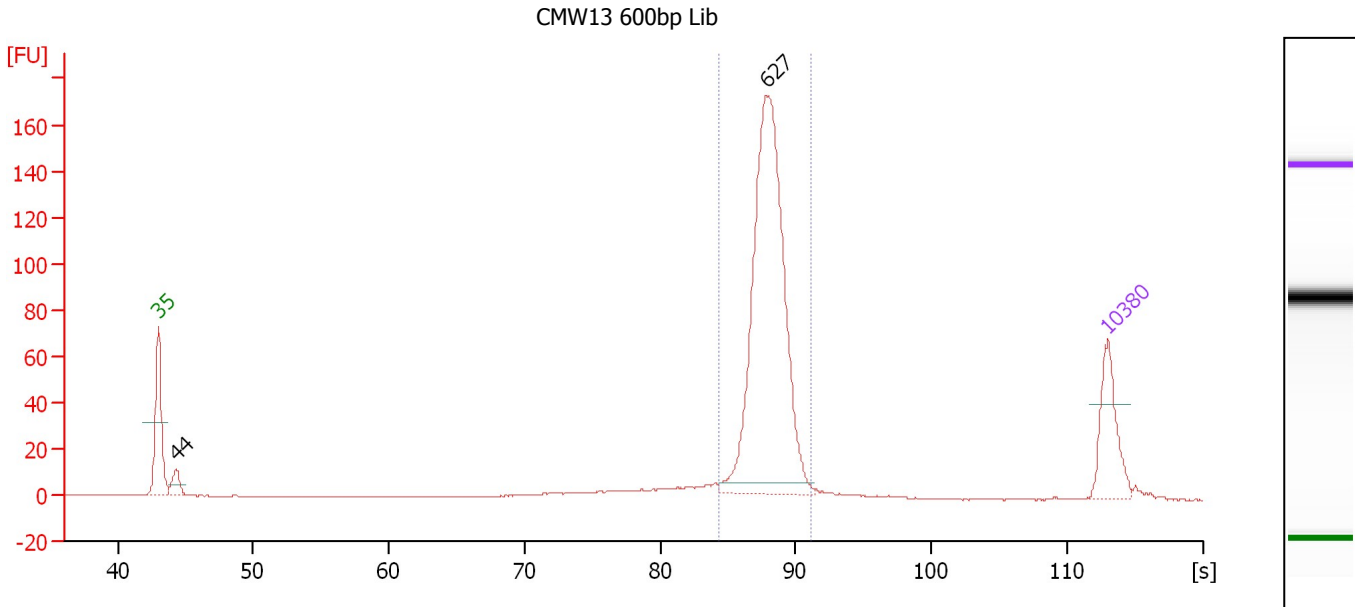
Region table for sample 6 : 10E-9 Lib

From [s]	To [s]	Average Size [bp]	Molarity [pmol/l]	Conc. [pg/μl]	Corr. Area % of Total	Size distribution in CV [%]	Color
86.08	91.70	665	3,830.0	1,678.48	1,347.2 96	5.2	Blue

Assay Class: High Sensitivity DNA Assay
 Data Path: C:\...ents and Settings\Bioanalyzer\2012-06-01\2012-06-01_004.xad

Created: 6/1/2012 4:20:21 PM
 Modified: 6/1/2012 5:08:57 PM

Electropherogram Summary Continued ...



Overall Results for sample 7 : CMW13 600bp Lib

Number of peaks found: 2 Corr. Area 1: 553.4
 Noise: 0.1

Peak table for sample 7 : CMW13 600bp Lib

Peak	Size [bp]	Conc. [pg/μl]	Molarity [pmol/l]	Observations
1	35	125.00	5,411.3	Lower Marker
2	44	32.57	1,124.5	
3	627	621.57	1,500.9	
4	10,380	75.00	10.9	Upper Marker

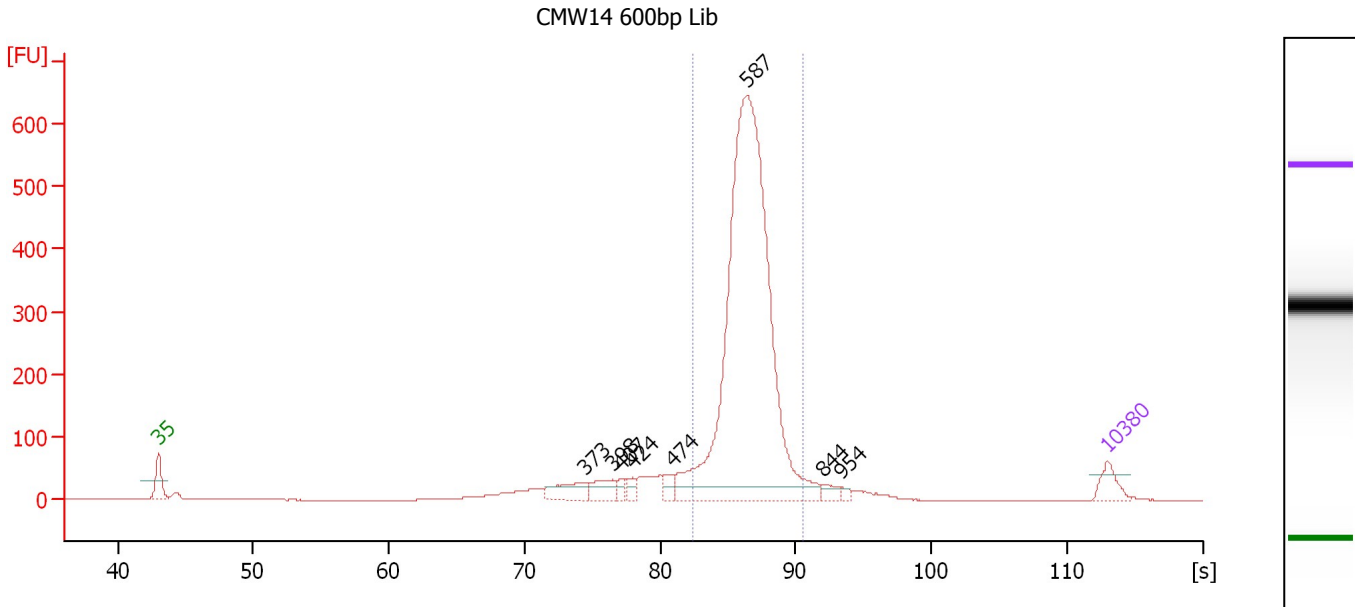
Region table for sample 7 : CMW13 600bp Lib

From [s]	To [s]	Average Size [bp]	Molarity [pmol/l]	Conc. [pg/μl]	Corr. Area % of Total	Size distribution in CV [%]	Color
84.31	91.10	634	1,535.8	641.56	553.4 84	5.5	Blue

Assay Class: High Sensitivity DNA Assay
 Data Path: C:\...ents and Settings\Bioanalyzer\2012-06-01\2012-06-01_004.xad

Created: 6/1/2012 4:20:21 PM
 Modified: 6/1/2012 5:08:57 PM

Electropherogram Summary Continued ...



Setpoint Deviations for sample 8 : CMW14 600bp Lib

Height Threshold [FU] : 20

Overall Results for sample 8 : CMW14 600bp Lib

Number of peaks found: 8 Corr. Area 1: 2,657.0
 Noise: 0.1

Peak table for sample 8 : CMW14 600bp Lib

Peak	Size [bp]	Conc. [pg/μl]	Molarity [pmol/l]	Observations
1	35	125.00	5,411.3	Lower Marker
2	373	148.40	602.5	
3	398	109.72	418.0	
4	407	35.13	130.7	
5	424	39.56	141.5	
6	474	60.41	193.1	
7	587	3,428.61	8,846.2	
8	844	43.96	78.9	
9	954	18.34	29.1	
10	10,380	75.00	10.9	Upper Marker

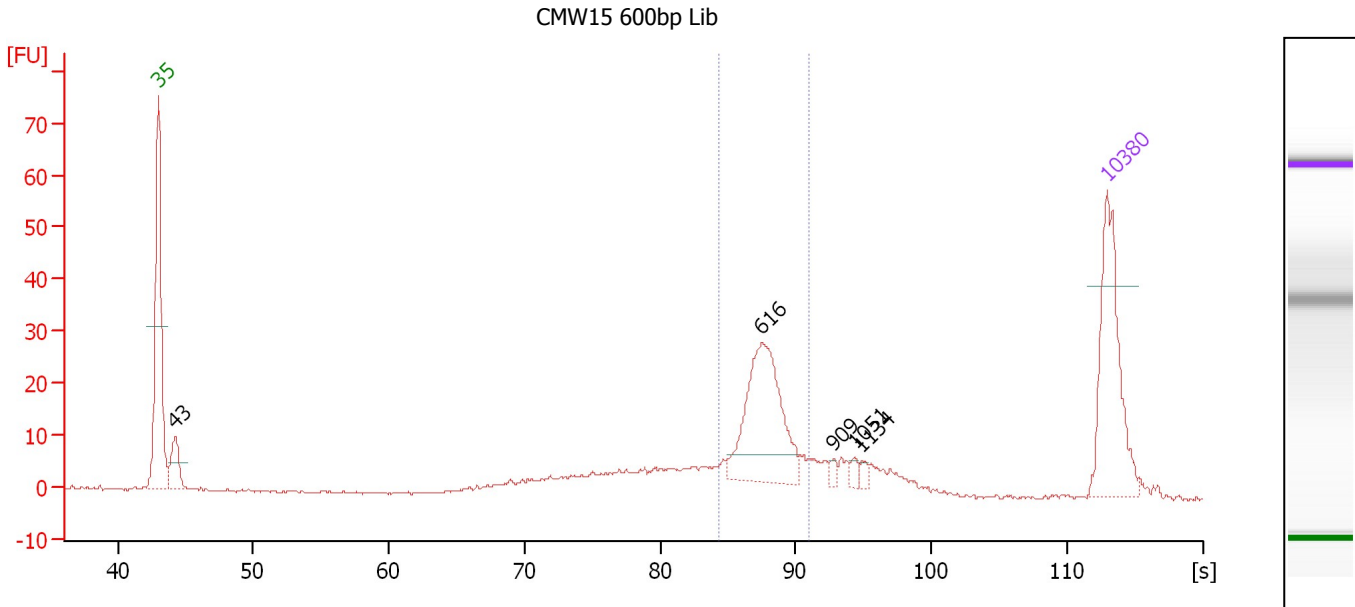
Region table for sample 8 : CMW14 600bp Lib

From [s]	To [s]	Average Size [bp]	Molarity [pmol/l]	Conc. [pg/μl]	Corr. Area % of Total	Size distribution in CV [%]	Color
82.36	90.54	594	8,507.2	3,325.03	2,657.0 78	6.2	Blue

Assay Class: High Sensitivity DNA Assay
 Data Path: C:\...ents and Settings\Bioanalyzer\2012-06-01\2012-06-01_004.xad

Created: 6/1/2012 4:20:21 PM
 Modified: 6/1/2012 5:08:57 PM

Electropherogram Summary Continued ...



Overall Results for sample 9 : CMW15 600bp Lib

Number of peaks found: 5 Corr. Area 1: 121.7
 Noise: 0.2

Peak table for sample 9 : CMW15 600bp Lib

Peak	Size [bp]	Conc. [pg/µl]	Molarity [pmol/l]	Observations
1	35	125.00	5,411.3	Lower Marker
2	43	31.82	1,113.6	
3	616	110.55	271.8	
4	909	3.73	6.2	
5	1,051	4.45	6.4	
6	1,134	3.84	5.1	
7	10,380	75.00	10.9	Upper Marker

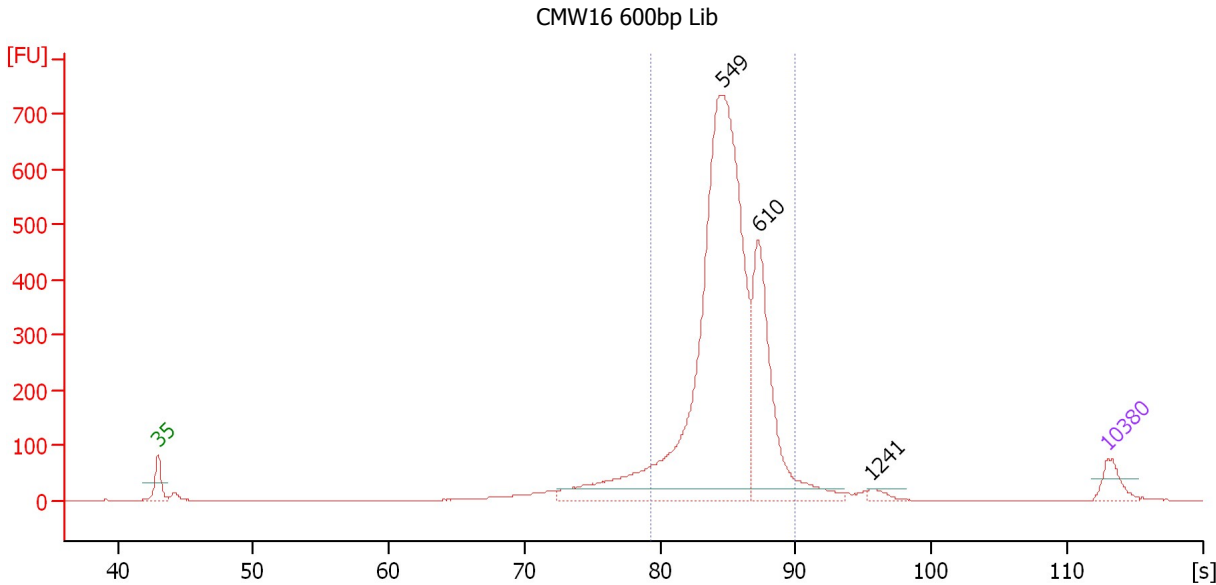
Region table for sample 9 : CMW15 600bp Lib

From [s]	To [s]	Average Size [bp]	Molarity [pmol/l]	Conc. [pg/µl]	Corr. Area % of Total	Size distribution in CV [%]	Color
84.33	90.97	627	348.8	143.65	121.7 42	7.1	Blue

Assay Class: High Sensitivity DNA Assay
 Data Path: C:\...ents and Settings\Bioanalyzer\2012-06-01\2012-06-01_004.xad

Created: 6/1/2012 4:20:21 PM
 Modified: 6/1/2012 5:08:57 PM

Electropherogram Summary Continued ...



Setpoint Deviations for sample 10 : CMW16 600bp Lib

Height Threshold [FU] : 20

Overall Results for sample 10 : CMW16 600bp Lib

Number of peaks found: 3 Corr. Area 1: 3,962.2
 Noise: 0.2

Peak table for sample 10 : CMW16 600bp Lib

Peak	Size [bp]	Conc. [pg/µl]	Molarity [pmol/l]	Observations
1	35	125.00	5,411.3	Lower Marker
2	549	3,178.75	8,773.5	
3	610	867.20	2,155.2	
4	1,241	28.17	34.4	
5	10,380	75.00	10.9	Upper Marker

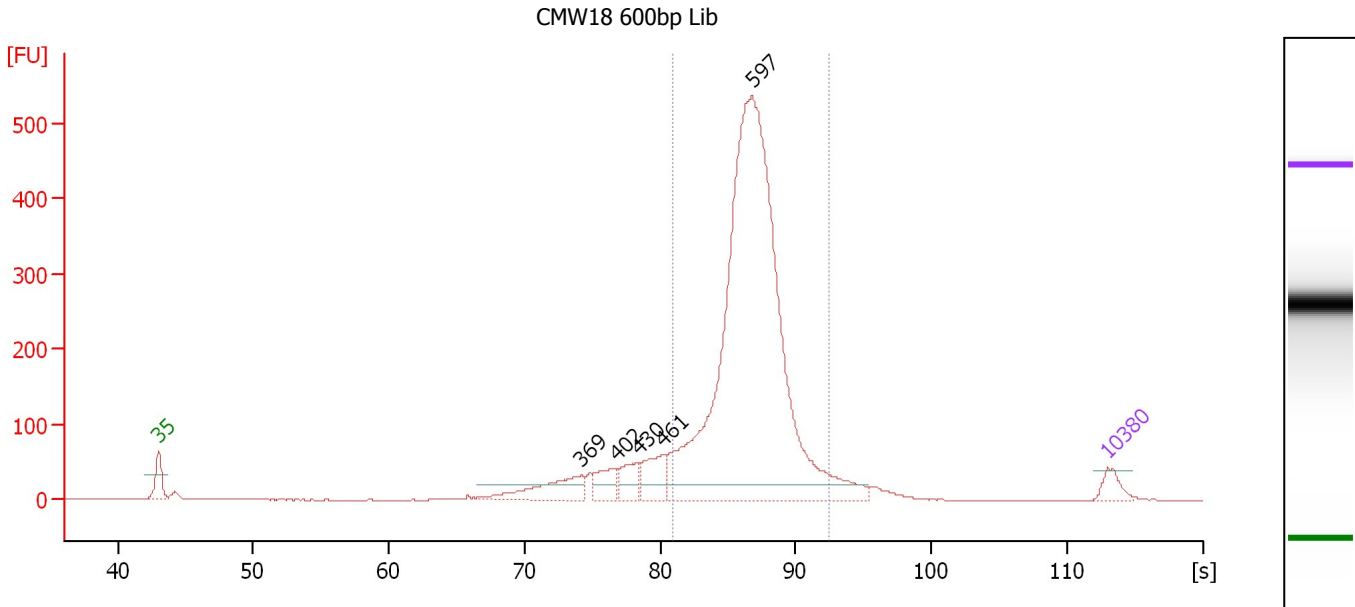
Region table for sample 10 : CMW16 600bp Lib

From [s]	To [s]	Average Size [bp]	Molarity [pmol/l]	Conc. [pg/µl]	Corr. Area % of Total	Size distribution in CV [%]	Color
79.36	89.97	561	10,119.5	3,715.30	3,962.2 86	8.2	Blue

Assay Class: High Sensitivity DNA Assay
 Data Path: C:\...ents and Settings\Bioanalyzer\2012-06-01\2012-06-01_004.xad

Created: 6/1/2012 4:20:21 PM
 Modified: 6/1/2012 5:08:57 PM

Electropherogram Summary Continued ...



Setpoint Deviations for sample 11 : CMW18 600bp Lib

Height Threshold [FU] : 20

Overall Results for sample 11 : CMW18 600bp Lib

Number of peaks found: 5 Corr. Area 1: 2,877.8
 Noise: 0.2

Peak table for sample 11 : CMW18 600bp Lib

Peak	Size [bp]	Conc. [pg/µl]	Molarity [pmol/l]	Observations
1	35	125.00	5,411.3	Lower Marker
2	369	337.74	1,385.6	
3	402	172.77	651.8	
4	430	171.20	603.5	
5	461	239.94	788.1	
6	597	5,009.94	12,717.5	
7	10,380	75.00	10.9	Upper Marker

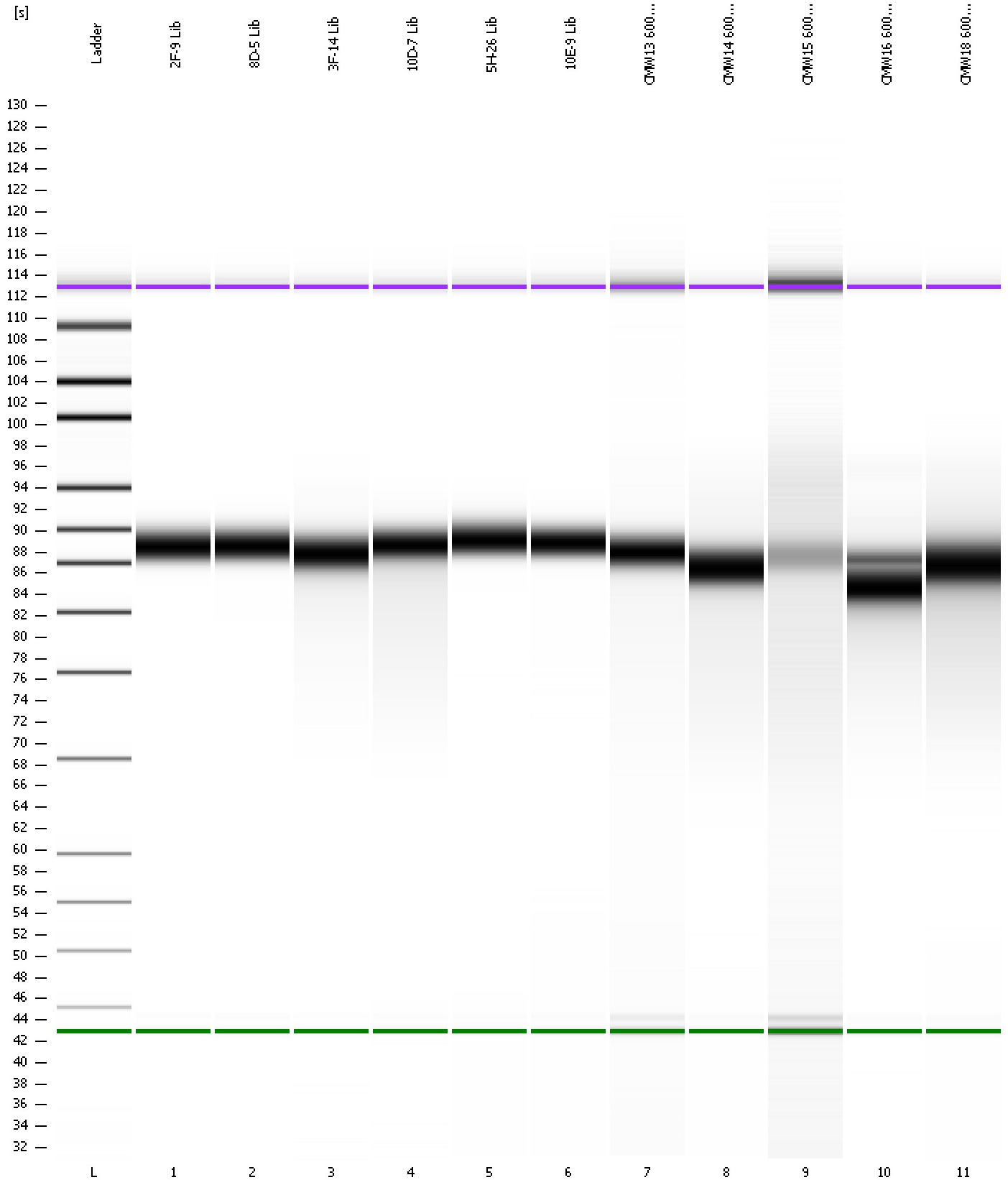
Region table for sample 11 : CMW18 600bp Lib

From [s]	To [s]	Average Size [bp]	Molarity [pmol/l]	Conc. [pg/µl]	Corr. Area	% of Total	Size distribution in CV [%]	Color
80.97	92.47	602	12,573.9	4,941.16	2,877.8	80	10.3	Blue

Assay Class: High Sensitivity DNA Assay
Data Path: C:\...ents and Settings\Bioanalyzer\2012-06-01\2012-06-01_004.xad

Created: 6/1/2012 4:20:21 PM
Modified: 6/1/2012 5:08:57 PM

Gel Image



Assay Class: High Sensitivity DNA Assay
 Data Path: C:\...ents and Settings\Bioanalyzer\2012-06-01\2012-06-01_004.xad

Created: 6/1/2012 4:20:21 PM
 Modified: 6/1/2012 5:08:57 PM

Run Logbook

Description	Number	Source	Category	Sub Category	Time	Time Zone	User	Host
Run ended on port 1 (Number of wells acquired: 12)		Instrument	Run		6/1/2012 5:01:40 PM	(GMT --07:00) Pacific Standard Time	UC Davis	D8XSMGH1
Run started on port 1 (File: C:\Documents and Settings\Bioanalyzer\2012-06-01\2012-06-01_004.xad)		Instrument	Run		6/1/2012 4:20:26 PM	(GMT --07:00) Pacific Standard Time	UC Davis	D8XSMGH1
Product Number : G2938B		Instrument	Run		6/1/2012 4:20:26 PM	(GMT --07:00) Pacific Standard Time	UC Davis	D8XSMGH1
Name :		Instrument	Run		6/1/2012 4:20:26 PM	(GMT --07:00) Pacific Standard Time	UC Davis	D8XSMGH1
Vendor : Agilent Technologies		Instrument	Run		6/1/2012 4:20:26 PM	(GMT --07:00) Pacific Standard Time	UC Davis	D8XSMGH1
Serial# : DE13701086		Instrument	Run		6/1/2012 4:20:26 PM	(GMT --07:00) Pacific Standard Time	UC Davis	D8XSMGH1
Firmware : C.01.069		Instrument	Run		6/1/2012 4:20:26 PM	(GMT --07:00) Pacific Standard Time	UC Davis	D8XSMGH1
Cartridge : Electrode		Instrument	Run		6/1/2012 4:20:26 PM	(GMT --07:00) Pacific Standard Time	UC Davis	D8XSMGH1