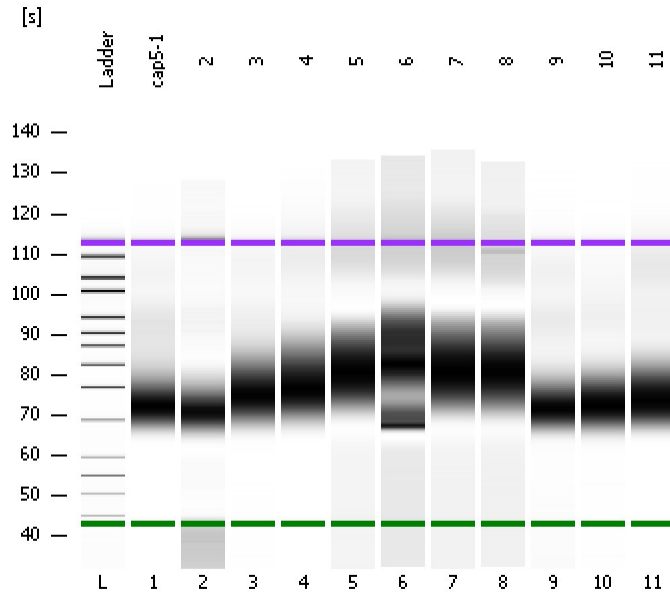


Assay Class: High Sensitivity DNA Assay
Data Path: C:\...ents and Settings\Bioanalyzer\2012-06-04\2012-06-04_002.xad

Created: 6/4/2012 11:08:46 AM
Modified: 6/4/2012 11:54:43 AM

Electrophoresis File Run Summary



Instrument Information:

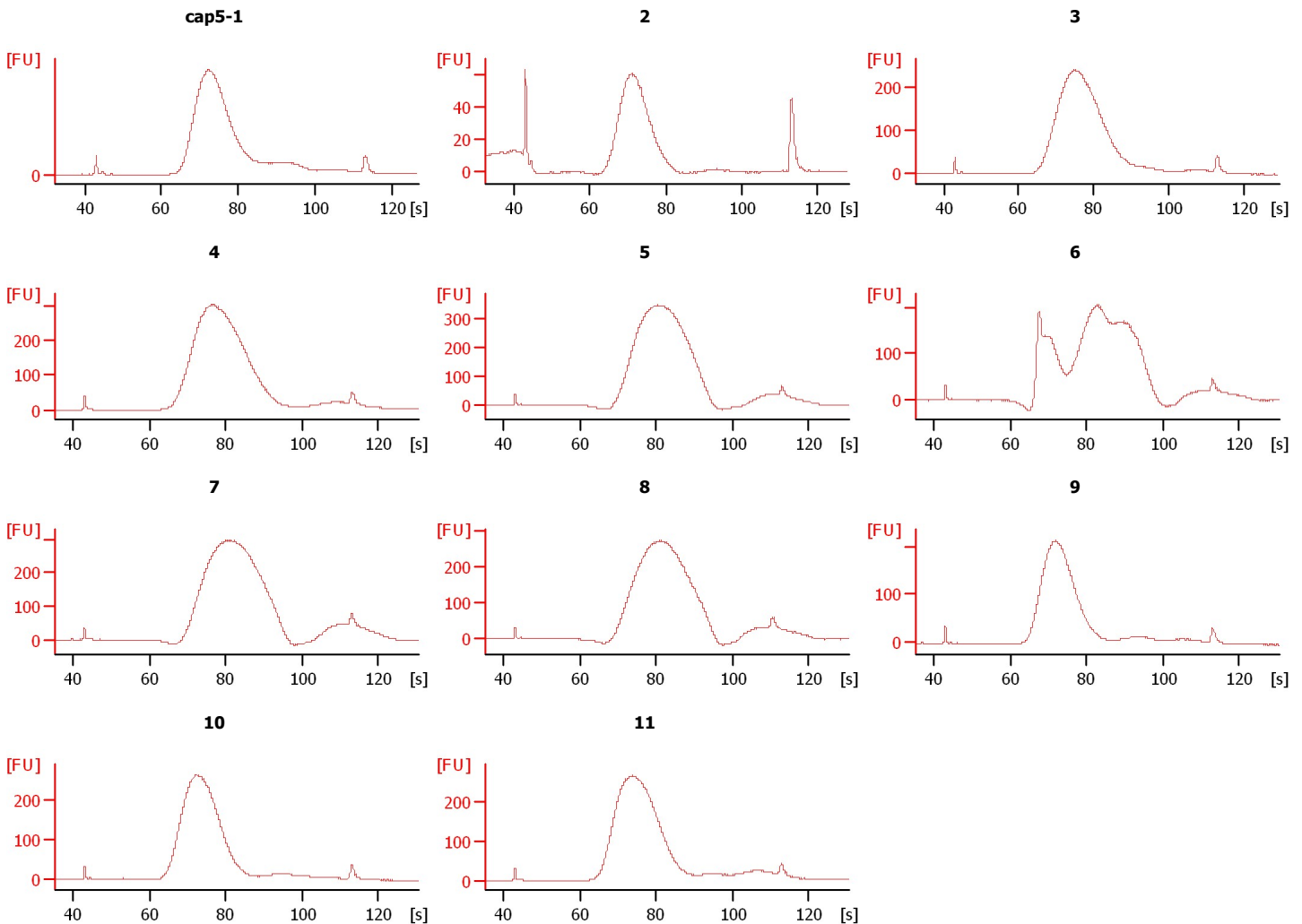
Instrument Name: DE13701086 Firmware: C.01.069
Serial#: DE13701086 Type: G2938B

Assay Information:

Assay Origin Path: C:\Program Files\Agilent\2100 bioanalyzer\2100 expert\assays\dsDNA\High Sensitivity DNA.xsy
Assay Class: High Sensitivity DNA Assay
Version: 1.03
Assay Comments: Copyright © 2003-2010 Agilent Technologies

Chip Information:

Chip Lot #: Reagent Kit Lot #:
Chip Comments:



Assay Class: High Sensitivity DNA Assay
 Data Path: C:\...ents and Settings\Bioanalyzer\2012-06-04\2012-06-04_002.xad

Created: 6/4/2012 11:08:46 AM
 Modified: 6/4/2012 11:54:43 AM

Electrophoresis File Run Summary (Chip Summary)

Sample Name	Sample Comment	Rest. Digest	Status	Observation	Result Label	Result Color
cap5-1		<input type="checkbox"/>	✓			
2		<input type="checkbox"/>	✓			
3		<input type="checkbox"/>	✓			
4		<input type="checkbox"/>	✓			
5		<input type="checkbox"/>	✓			
6		<input type="checkbox"/>	✓			
7		<input type="checkbox"/>	✓			
8		<input type="checkbox"/>	✓			
9		<input type="checkbox"/>	✓			
10		<input type="checkbox"/>	✓			
11		<input type="checkbox"/>	✓			
Ladder		<input type="checkbox"/>	✓			

Chip Lot #

Reagent Kit Lot #

Chip Comments :

Assay Class: High Sensitivity DNA Assay
Data Path: C:\...ents and Settings\Bioanalyzer\2012-06-04\2012-06-04_002.xad

Created: 6/4/2012 11:08:46 AM
Modified: 6/4/2012 11:54:43 AM

Electrophoresis Assay Details

General Analysis Settings

Number of Available Sample and Ladder Wells (Max.) : 12
Minimum Visible Range [s] : 32
Maximum Visible Range [s] : 138
Start Analysis Time Range [s] : 33
End Analysis Time Range [s] : 137.5
Ladder Concentration [pg/μl] : 1950
Uses Standard Area for Ladder Fragments
Lower Marker Concentration [pg/μl] : 125
Upper Marker Concentration [pg/μl] : 75
Used Upper Marker for Quantitation
Standard Curve Fit is Point to Point
Show Data Aligned to Lower and Upper Marker

Integrator Settings

Integration Start Time [s] : 33.05
Integration End Time [s] : 137
Slope Threshold : 0.8
Height Threshold [FU] : 5
Area Threshold : 0.1
Width Threshold [s] : 0.6
Baseline Plateau [s] : 0.5

Filter Settings

Filter Width [s] : 0.5
Polynomial Order : 4

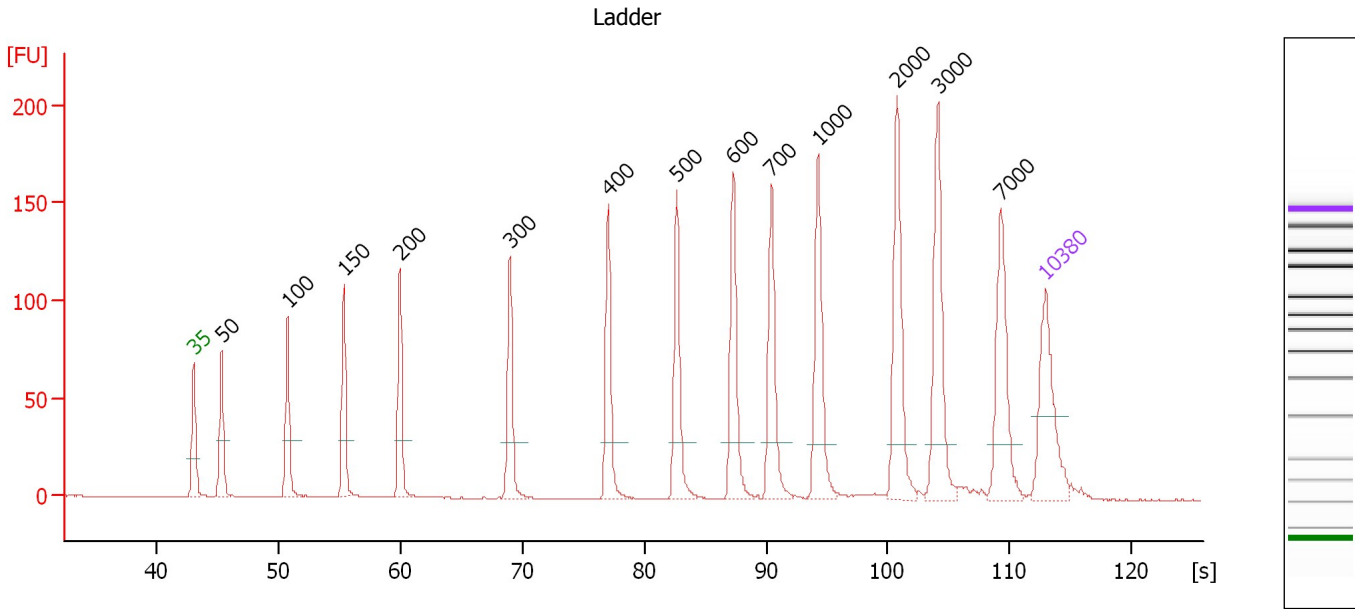
Ladder

Ladder Peak	Size	Area
1	35	160
2	50	210
3	100	208
4	150	221
5	200	242
6	300	270
7	400	305
8	500	306
9	600	336
10	700	321
11	1000	366
12	2000	413
13	3000	411
14	7000	400
15	10380	214

Assay Class: High Sensitivity DNA Assay
 Data Path: C:\...ents and Settings\Bioanalyzer\2012-06-04\2012-06-04_002.xad

Created: 6/4/2012 11:08:46 AM
 Modified: 6/4/2012 11:54:43 AM

Electropherogram Summary



Overall Results for Ladder

Noise: 0.1

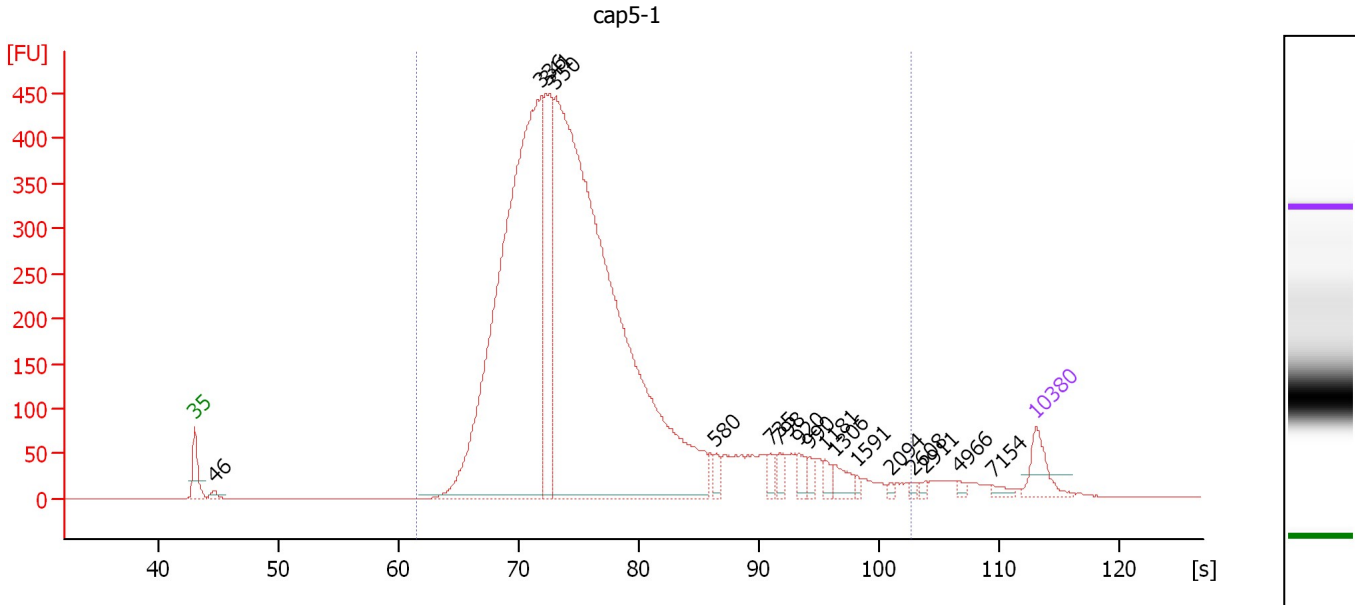
Peak table for Ladder

Peak	Size [bp]	Conc. [pg/μl]	Molarity [pmol/l]	Observations
1	35	125.00	5,411.3	Lower Marker
2	50	150.00	4,545.5	Ladder Peak
3	100	150.00	2,272.7	Ladder Peak
4	150	150.00	1,515.2	Ladder Peak
5	200	150.00	1,136.4	Ladder Peak
6	300	150.00	757.6	Ladder Peak
7	400	150.00	568.2	Ladder Peak
8	500	150.00	454.5	Ladder Peak
9	600	150.00	378.8	Ladder Peak
10	700	150.00	324.7	Ladder Peak
11	1,000	150.00	227.3	Ladder Peak
12	2,000	150.00	113.6	Ladder Peak
13	3,000	150.00	75.8	Ladder Peak
14	7,000	150.00	32.5	Ladder Peak
15	10,380	75.00	10.9	Upper Marker

Assay Class: High Sensitivity DNA Assay
 Data Path: C:\...ents and Settings\Bioanalyzer\2012-06-04\2012-06-04_002.xad

Created: 6/4/2012 11:08:46 AM
 Modified: 6/4/2012 11:54:43 AM

Electropherogram Summary Continued ...



Overall Results for sample 1 : cap5-1

Number of peaks found: 17 Corr. Area 1: 7,504.6
 Noise: 0.2

Peak table for sample 1 : cap5-1

Peak	Size [bp]	Conc. [pg/μl]	Molarity [pmol/l]	Observations
1	35	125.00	5,411.3	Lower Marker
2	46	21.03	699.8	
3	336	2,658.67	12,004.8	
4	341	523.58	2,329.5	
5	350	3,722.02	16,114.3	
6	580	29.08	76.0	
7	735	34.74	71.6	
8	798	35.99	68.4	
9	920	34.28	56.5	
10	990	24.33	37.2	
11	1,181	26.41	33.9	
12	1,306	45.45	52.7	
13	1,591	10.46	10.0	
14	2,094	7.44	5.4	
15	2,608	7.79	4.5	
16	2,911	9.20	4.8	
17	4,966	10.22	3.1	
18	7,154	14.97	3.2	
19	10,380	75.00	10.9	Upper Marker

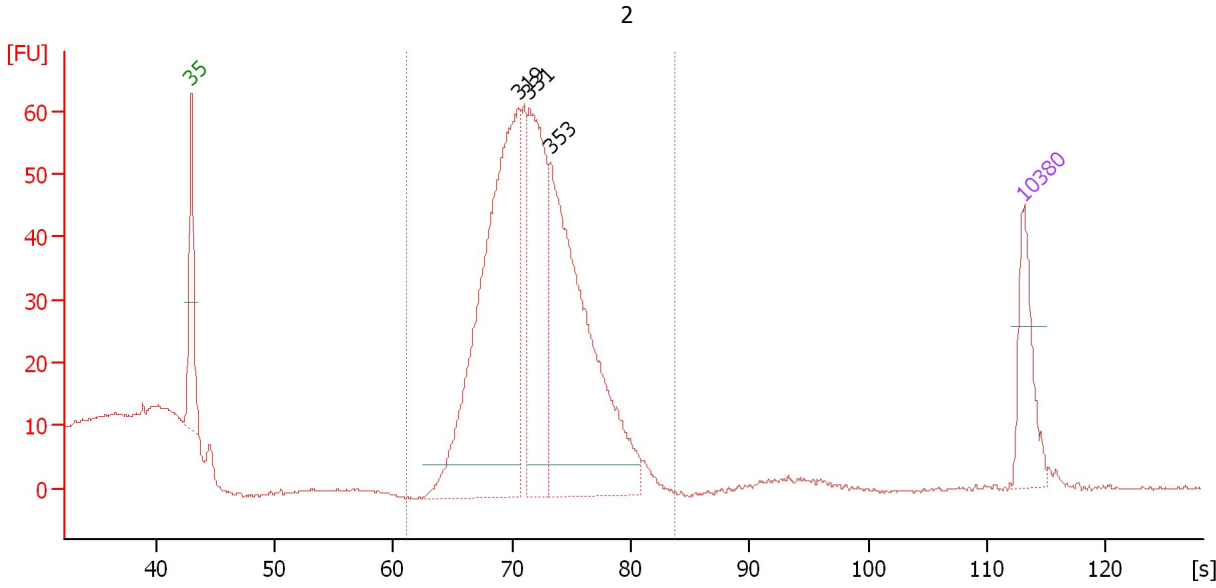
Region table for sample 1 : cap5-1

From [s]	To [s]	Average Size [bp]	Molarity [pmol/l]	Conc. [pg/μl]	Corr. Area	% of Total	Size distribution in CV [%]	Color
61.44	102.59	437	29,989.4	7,288.72	7,504.6	98	59.6	■

Assay Class: High Sensitivity DNA Assay
 Data Path: C:\...ents and Settings\Bioanalyzer\2012-06-04\2012-06-04_002.xad

Created: 6/4/2012 11:08:46 AM
 Modified: 6/4/2012 11:54:43 AM

Electropherogram Summary Continued ...



Overall Results for sample 2 : 2

Number of peaks found: 3 Corr. Area 1: 643.5
 Noise: 0.1

Peak table for sample 2 : 2

Peak	Size [bp]	Conc. [pg/μl]	Molarity [pmol/l]	Observations
1	35	125.00	5,411.3	Lower Marker
2	319	736.62	3,495.3	
3	331	324.91	1,486.9	
4	353	575.65	2,467.4	
5	10,380	75.00	10.9	Upper Marker

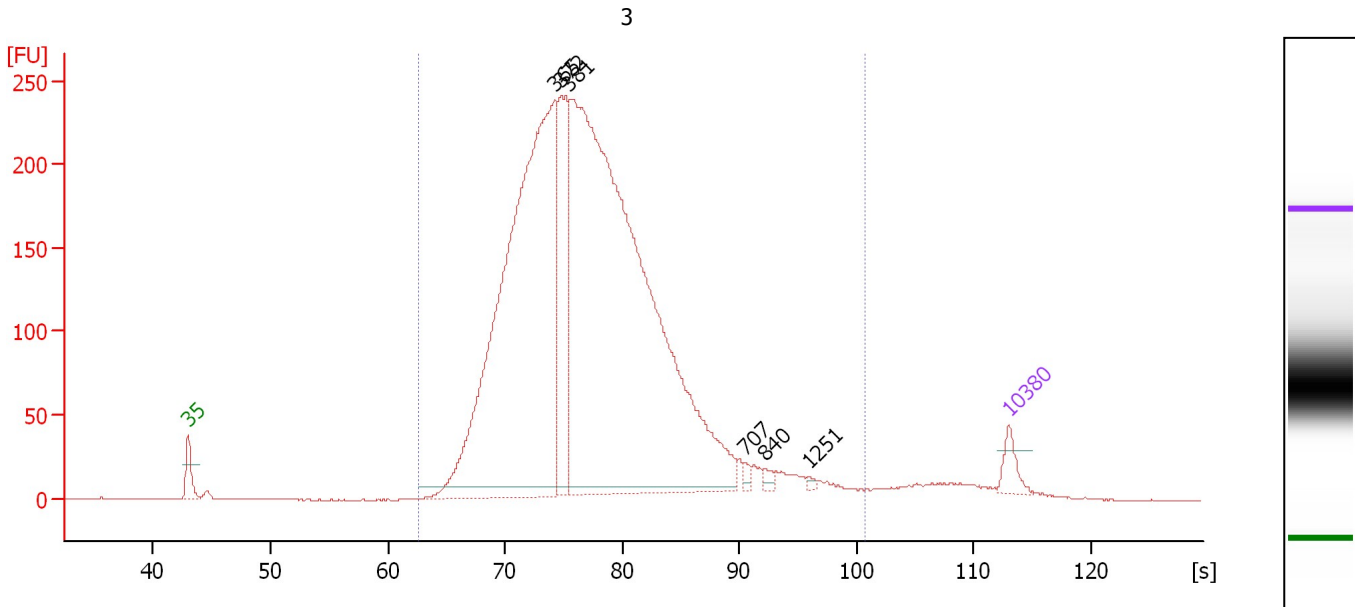
Region table for sample 2 : 2

From [s]	To [s]	Average Size [bp]	Molarity [pmol/l]	Conc. [pg/μl]	Corr. Area % of Total	Size distribution in CV [%]	Color
61.21	83.79	336	6,180.8	1,351.31	643.5 94	11.4	Blue

Assay Class: High Sensitivity DNA Assay
 Data Path: C:\...ents and Settings\Bioanalyzer\2012-06-04\2012-06-04_002.xad

Created: 6/4/2012 11:08:46 AM
 Modified: 6/4/2012 11:54:43 AM

Electropherogram Summary Continued ...



Overall Results for sample 3 : 3

Number of peaks found: 6 Corr. Area 1: 4,621.4
 Noise: 0.1

Peak table for sample 3 : 3

Peak	Size [bp]	Conc. [pg/μl]	Molarity [pmol/l]	Observations
1	35	125.00	5,411.3	Lower Marker
2	365	3,889.55	16,136.6	
3	372	747.49	3,044.4	
4	381	5,628.51	22,377.4	
5	707	25.80	55.3	
6	840	25.61	46.2	
7	1,251	12.61	15.3	
8	10,380	75.00	10.9	Upper Marker

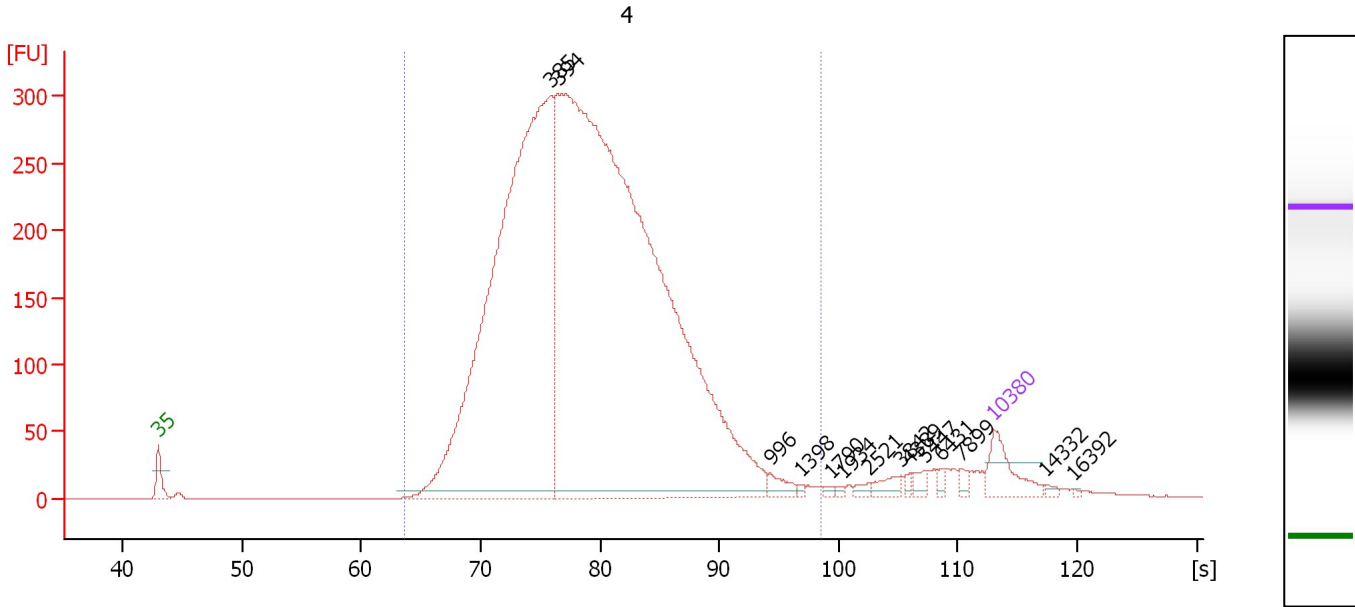
Region table for sample 3 : 3

From [s]	To [s]	Average Size [bp]	Molarity [pmol/l]	Conc. [pg/μl]	Corr. Area	% of Total	Size distribution in CV [%]	Color
62.71	100.75	435	41,520.3	10,751.29	4,621.4	98	40.5	Blue

Assay Class: High Sensitivity DNA Assay
 Data Path: C:\...ents and Settings\Bioanalyzer\2012-06-04\2012-06-04_002.xad

Created: 6/4/2012 11:08:46 AM
 Modified: 6/4/2012 11:54:43 AM

Electropherogram Summary Continued ...



Overall Results for sample 4 : 4

Number of peaks found: 14 Corr. Area 1: 6,222.5
 Noise: 0.2

Peak table for sample 4 : 4

Peak	Size [bp]	Conc. [pg/μl]	Molarity [pmol/l]	Observations
1	35	125.00	5,411.3	Lower Marker
2	385	2,505.96	9,850.3	
3	394	4,240.84	16,327.1	
4	996	30.44	46.3	
5	1,398	5.27	5.7	
6	1,790	5.56	4.7	
7	1,934	5.36	4.2	
8	2,521	11.39	6.8	
9	3,842	25.32	10.0	
10	4,389	8.41	2.9	
11	5,447	16.33	4.5	
12	6,431	10.07	2.4	
13	7,899	13.62	2.6	
14	10,380	75.00	10.9	Upper Marker
15	14,332	0.00	0.0	
16	16,392	0.00	0.0	

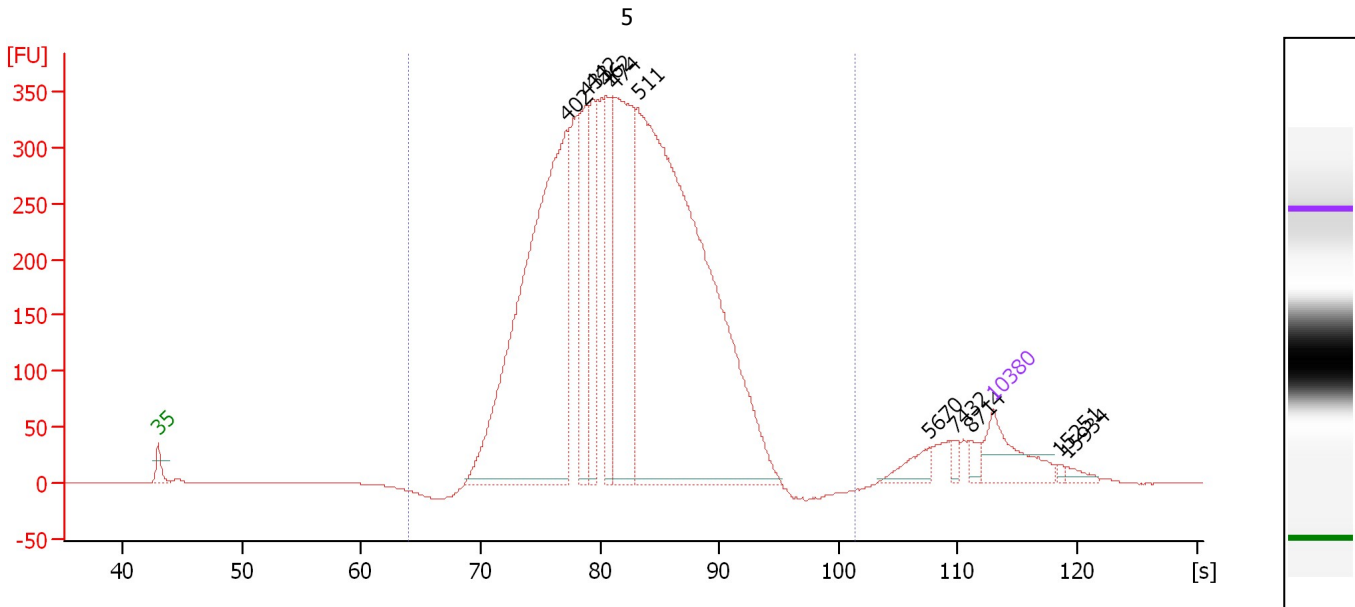
Region table for sample 4 : 4

From [s]	To [s]	Average Size [bp]	Molarity [pmol/l]	Conc. [pg/μl]	Corr. Area % of Total	Size distribution in CV [%]	Color
63.67	98.50	454	24,178.8	6,636.02	6,222.5 96	30.5	Blue

Assay Class: High Sensitivity DNA Assay
 Data Path: C:\...ents and Settings\Bioanalyzer\2012-06-04\2012-06-04_002.xad

Created: 6/4/2012 11:08:46 AM
 Modified: 6/4/2012 11:54:43 AM

Electropherogram Summary Continued ...



Overall Results for sample 5 : 5

Number of peaks found: 11 Corr. Area 1: 6,962.5
 Noise: 0.2

Peak table for sample 5 : 5

Peak	Size [bp]	Conc. [pg/μl]	Molarity [pmol/l]	Observations
1	35	125.00	5,411.3	Lower Marker
2	402	1,074.38	4,048.1	
3	433	202.44	709.1	
4	442	156.74	537.4	
5	462	179.84	589.5	
6	474	445.43	1,423.7	
7	511	1,584.32	4,693.3	
8	5,670	32.67	8.7	
9	7,432	10.85	2.2	
10	8,714	15.70	2.7	
11	10,380	75.00	10.9	Upper Marker
12	15,251	0.00	0.0	
13	15,934	0.00	0.0	

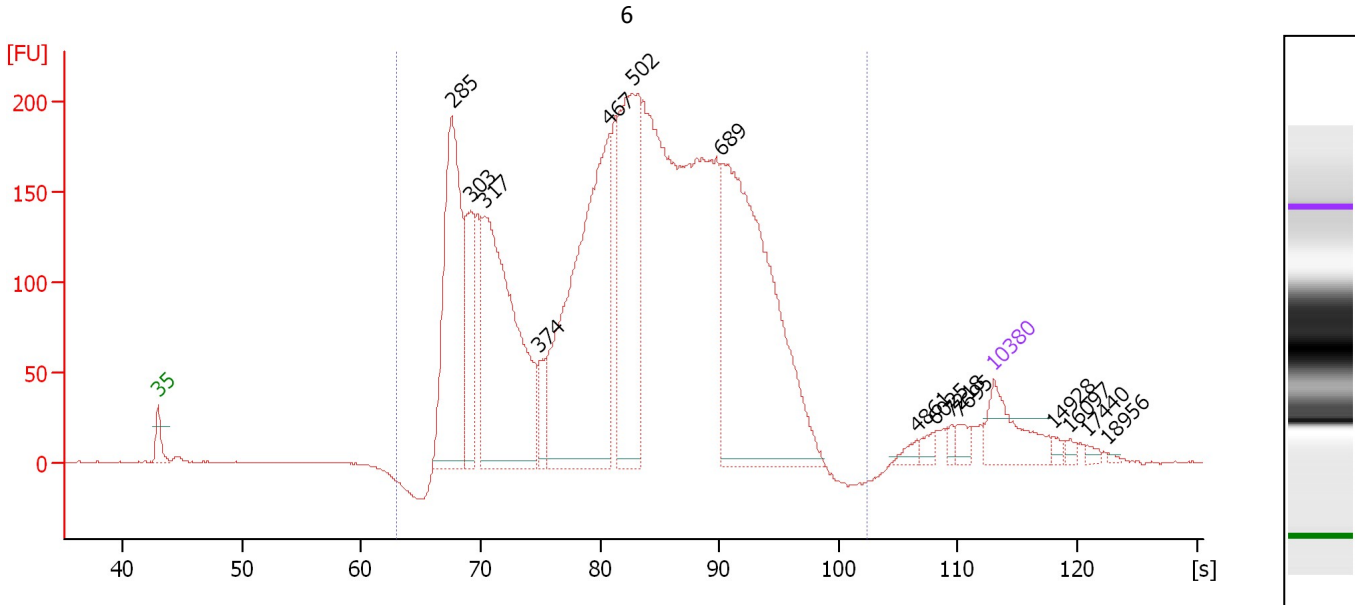
Region table for sample 5 : 5

From [s]	To [s]	Average Size [bp]	Molarity [pmol/l]	Conc. [pg/μl]	Corr. Area	% of Total	Size distribution in CV [%]	Color
63.96	101.33	500	12,754.1	3,923.45	6,962.5	96	24.3	Blue

Assay Class: High Sensitivity DNA Assay
 Data Path: C:\...ents and Settings\Bioanalyzer\2012-06-04\2012-06-04_002.xad

Created: 6/4/2012 11:08:46 AM
 Modified: 6/4/2012 11:54:43 AM

Electropherogram Summary Continued ...



Overall Results for sample 6 : 6

Number of peaks found: 15 Corr. Area 1: 5,164.1
 Noise: 0.4

Peak table for sample 6 : 6

Peak	Size [bp]	Conc. [pg/μl]	Molarity [pmol/l]	Observations
1	35	125.00	5,411.3	Lower Marker
2	285	477.83	2,542.7	
3	303	172.90	865.9	
4	317	638.79	3,055.0	
5	374	48.24	195.4	
6	467	704.49	2,285.2	
7	502	397.32	1,200.0	
8	689	766.36	1,684.1	
9	4,861	12.63	3.9	
10	6,025	13.36	3.4	
11	7,218	9.16	1.9	
12	7,695	16.71	3.3	
13	10,380	75.00	10.9	Upper Marker
14	14,928	0.00	0.0	
15	16,097	0.00	0.0	
16	17,440	0.00	0.0	
17	18,956	0.00	0.0	

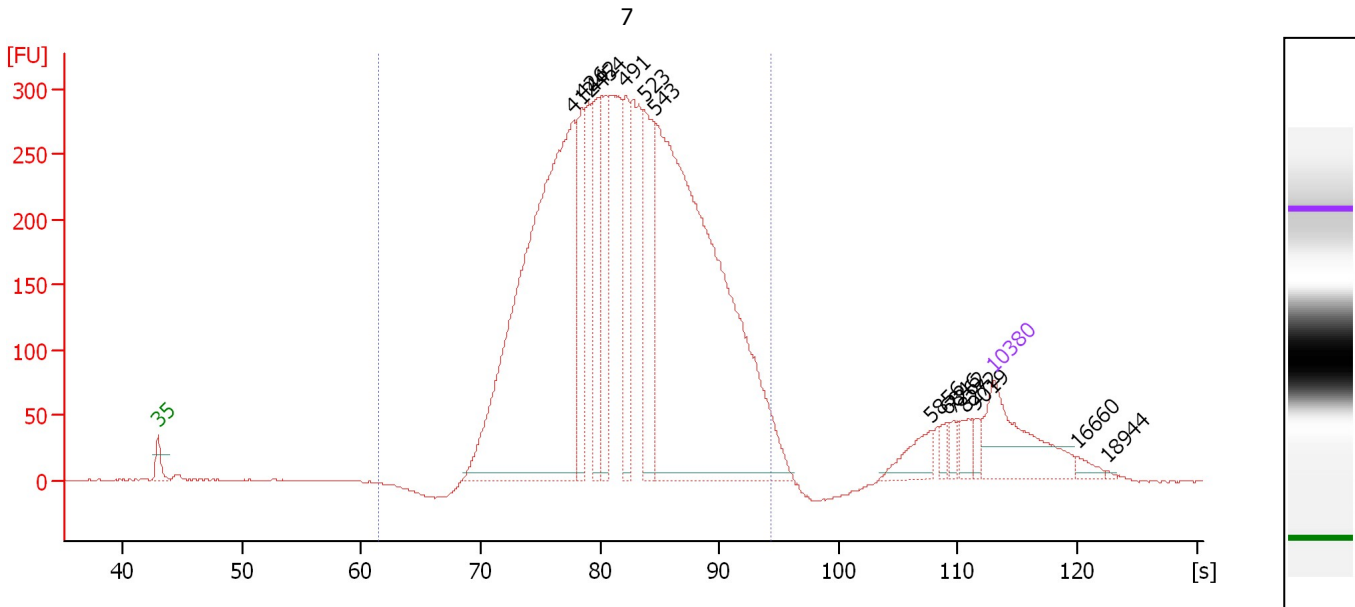
Region table for sample 6 : 6

From [s]	To [s]	Average Size [bp]	Molarity [pmol/l]	Conc. [pg/μl]	Corr. Area	% of Total	Size distribution in CV [%]	Color
63.00	102.33	555	14,569.0	4,333.91	5,164.1	97	42.0	Blue

Assay Class: High Sensitivity DNA Assay
 Data Path: C:\...ents and Settings\Bioanalyzer\2012-06-04\2012-06-04_002.xad

Created: 6/4/2012 11:08:46 AM
 Modified: 6/4/2012 11:54:43 AM

Electropherogram Summary Continued ...



Overall Results for sample 7 : 7

Number of peaks found: 14 Corr. Area 1: 6,224.9
 Noise: 0.4

Peak table for sample 7 : 7

Peak	Size [bp]	Conc. [pg/μl]	Molarity [pmol/l]	Observations
1	35	125.00	5,411.3	Lower Marker
2	412	702.19	2,581.4	
3	426	95.11	338.2	
4	442	97.06	332.9	
5	454	103.95	347.0	
6	491	86.96	268.2	
7	523	116.07	336.3	
8	543	760.76	2,124.0	
9	5,856	25.73	6.7	
10	6,846	7.87	1.7	
11	7,262	8.70	1.8	
12	8,272	13.88	2.5	
13	9,019	7.49	1.3	
14	10,380	75.00	10.9	Upper Marker
15	16,660	0.00	0.0	
16	18,944	0.00	0.0	

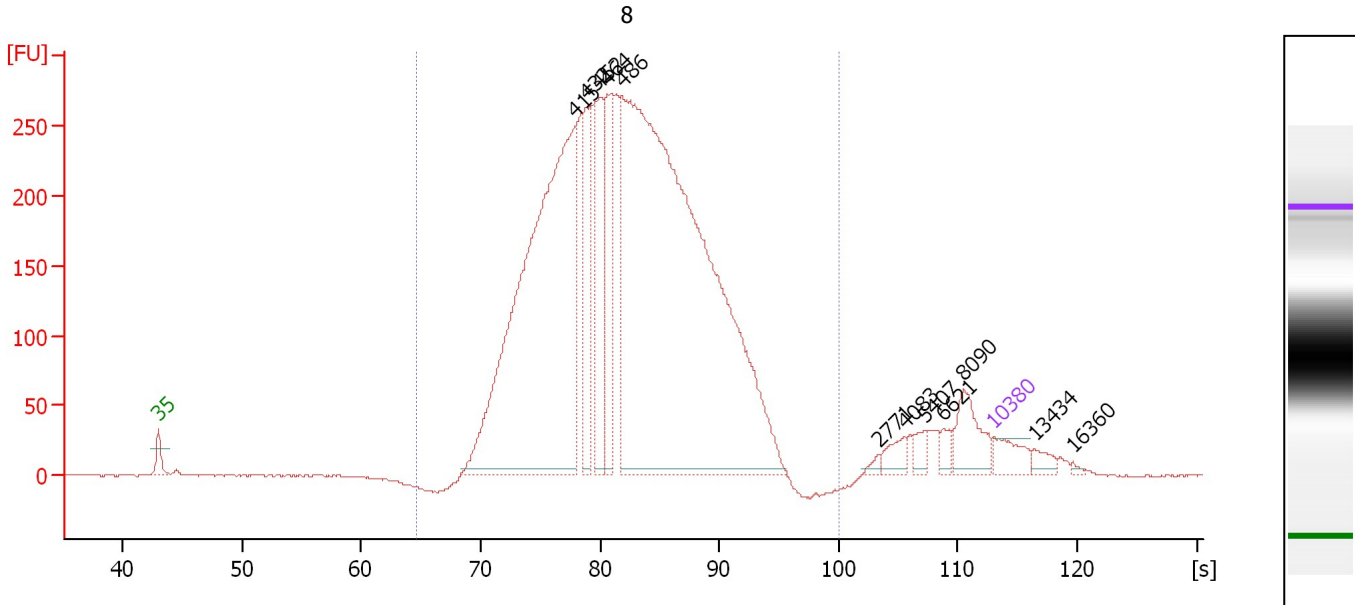
Region table for sample 7 : 7

From [s]	To [s]	Average Size [bp]	Molarity [pmol/l]	Conc. [pg/μl]	Corr. Area % of Total	Size distribution in CV [%]	Color
61.53	94.30	510	7,497.2	2,326.29	6,224.9 94	26.1	Blue

Assay Class: High Sensitivity DNA Assay
 Data Path: C:\...ents and Settings\Bioanalyzer\2012-06-04\2012-06-04_002.xad

Created: 6/4/2012 11:08:46 AM
 Modified: 6/4/2012 11:54:43 AM

Electropherogram Summary Continued ...



Overall Results for sample 8 : 8

Number of peaks found: 12 Corr. Area 1: 5,654.9
 Noise: 0.6

Peak table for sample 8 : 8

Peak	Size [bp]	Conc. [pg/μl]	Molarity [pmol/l]	Observations
1	35	125.00	5,411.3	Lower Marker
2	415	2,623.53	9,572.7	
3	432	328.92	1,153.5	
4	452	409.31	1,371.4	
5	464	409.12	1,336.1	
6	486	4,369.65	13,628.6	
7	2,771	16.34	8.9	
8	4,083	54.98	20.4	
9	5,407	38.75	10.9	
10	6,621	34.16	7.8	
11	8,090	148.95	27.9	
12	10,380	75.00	10.9	Upper Marker
13	13,434	0.00	0.0	
14	16,360	0.00	0.0	

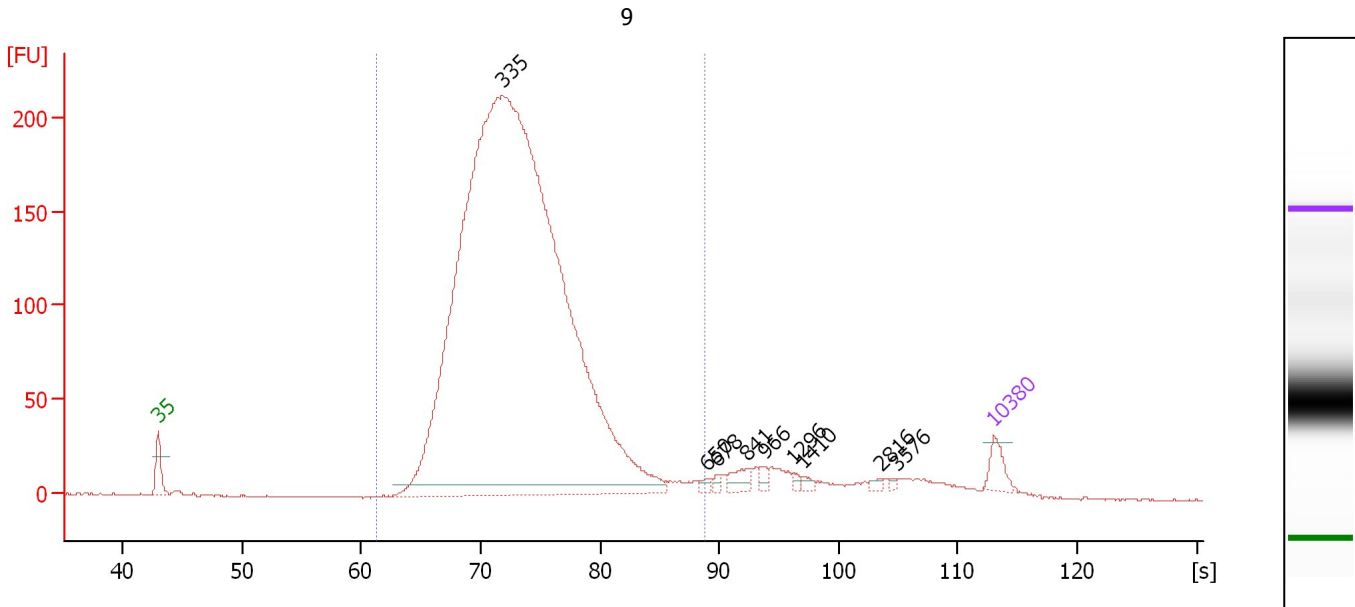
Region table for sample 8 : 8

From [s]	To [s]	Average Size [bp]	Molarity [pmol/l]	Conc. [pg/μl]	Corr. Area	% of Total	Size distribution in CV [%]	Color
64.60	100.01	508	28,103.4	8,681.92	5,654.9	94	26.6	Blue

Assay Class: High Sensitivity DNA Assay
 Data Path: C:\...ents and Settings\Bioanalyzer\2012-06-04\2012-06-04_002.xad

Created: 6/4/2012 11:08:46 AM
 Modified: 6/4/2012 11:54:43 AM

Electropherogram Summary Continued ...



Overall Results for sample 9 : 9

Number of peaks found: 9 Corr. Area 1: 3,034.4
 Noise: 0.4

Peak table for sample 9 : 9

Peak	Size [bp]	Conc. [pg/μl]	Molarity [pmol/l]	Observations
1	35	125.00	5,411.3	Lower Marker
2	335	10,282.82	46,485.4	
3	650	23.85	55.6	
4	678	19.38	43.3	
5	841	69.56	125.3	
6	966	30.72	48.2	
7	1,296	15.02	17.6	
8	1,410	20.21	21.7	
9	2,816	14.80	8.0	
10	3,576	9.36	4.0	
11	10,380	75.00	10.9	Upper Marker

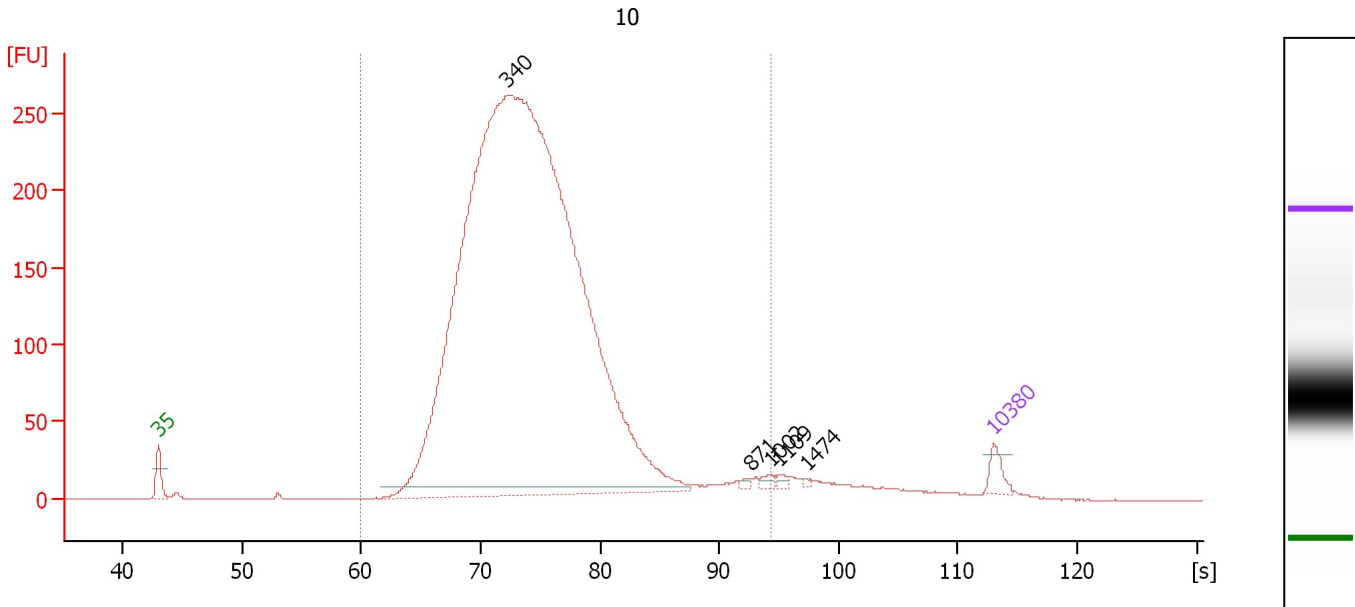
Region table for sample 9 : 9

From [s]	To [s]	Average Size [bp]	Molarity [pmol/l]	Conc. [pg/μl]	Corr. Area % of Total	Size distribution in CV [%]	Color
61.23	88.86	356	44,987.8	10,220.39	3,034.4 92	17.0	Blue

Assay Class: High Sensitivity DNA Assay
 Data Path: C:\...ents and Settings\Bioanalyzer\2012-06-04\2012-06-04_002.xad

Created: 6/4/2012 11:08:46 AM
 Modified: 6/4/2012 11:54:43 AM

Electropherogram Summary Continued ...



Overall Results for sample 10 : 10

Number of peaks found: 5 Corr. Area 1: 4,286.8
 Noise: 0.2

Peak table for sample 10 : 10

Peak	Size [bp]	Conc. [pg/μl]	Molarity [pmol/l]	Observations
1	35	125.00	5,411.3	Lower Marker
2	340	13,278.60	59,114.3	
3	871	18.38	32.0	
4	1,002	28.23	42.7	
5	1,109	21.23	29.0	
6	1,474	8.06	8.3	
7	10,380	75.00	10.9	Upper Marker

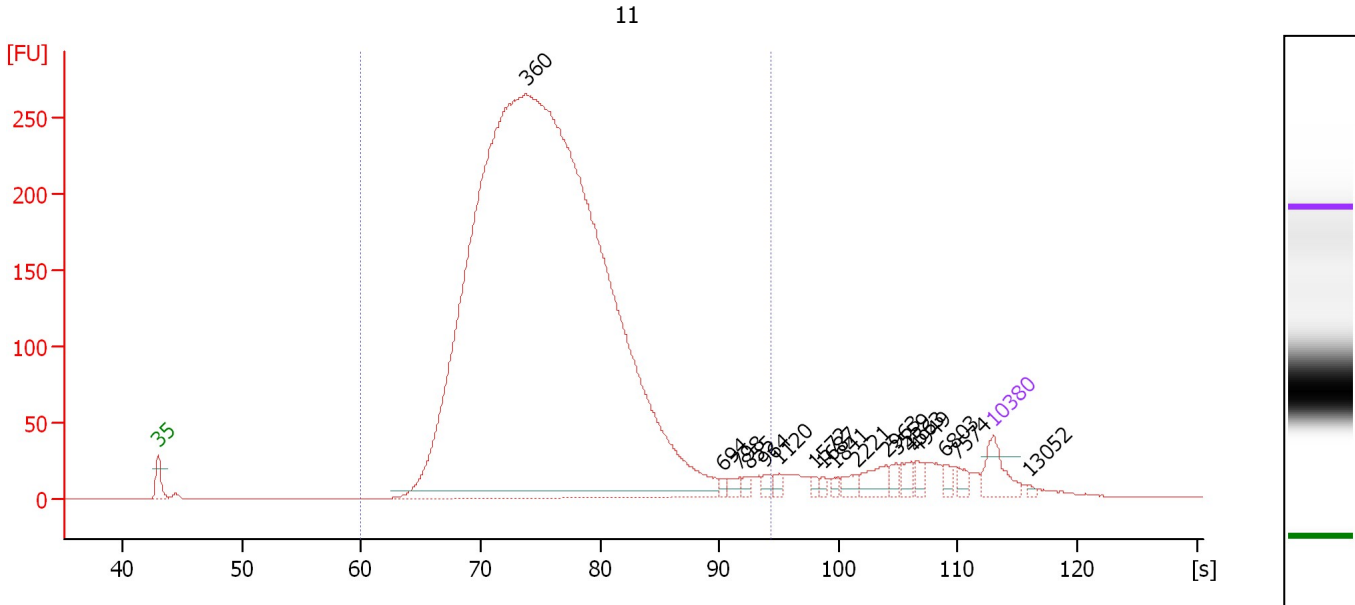
Region table for sample 10 : 10

From [s]	To [s]	Average Size [bp]	Molarity [pmol/l]	Conc. [pg/μl]	Corr. Area % of Total	Size distribution in CV [%]	Color	
59.94	94.30	374	57,664.2	13,470.66	4,286.8	96	24.7	Blue

Assay Class: High Sensitivity DNA Assay
 Data Path: C:\...ents and Settings\Bioanalyzer\2012-06-04\2012-06-04_002.xad

Created: 6/4/2012 11:08:46 AM
 Modified: 6/4/2012 11:54:43 AM

Electropherogram Summary Continued ...



Overall Results for sample 11 : 11

Number of peaks found: 17 Corr. Area 1: 4,737.0
 Noise: 0.1

Peak table for sample 11 : 11

Peak	Size [bp]	Conc. [pg/μl]	Molarity [pmol/l]	Observations
1	35	125.00	5,411.3	Lower Marker
2	360	7,991.03	33,629.1	
3	694	14.38	31.4	
4	798	21.65	41.1	
5	855	16.06	28.4	
6	964	19.02	29.9	
7	1,120	17.44	23.6	
8	1,572	11.52	11.1	
9	1,687	10.24	9.2	
10	1,841	10.64	8.8	
11	2,221	24.10	16.4	
12	2,963	49.51	25.3	
13	3,559	20.42	8.7	
14	4,563	28.82	9.6	
15	4,949	22.02	6.7	
16	6,803	19.37	4.3	
17	7,574	22.41	4.5	
18	10,380	75.00	10.9	Upper Marker
19	13,052	0.00	0.0	

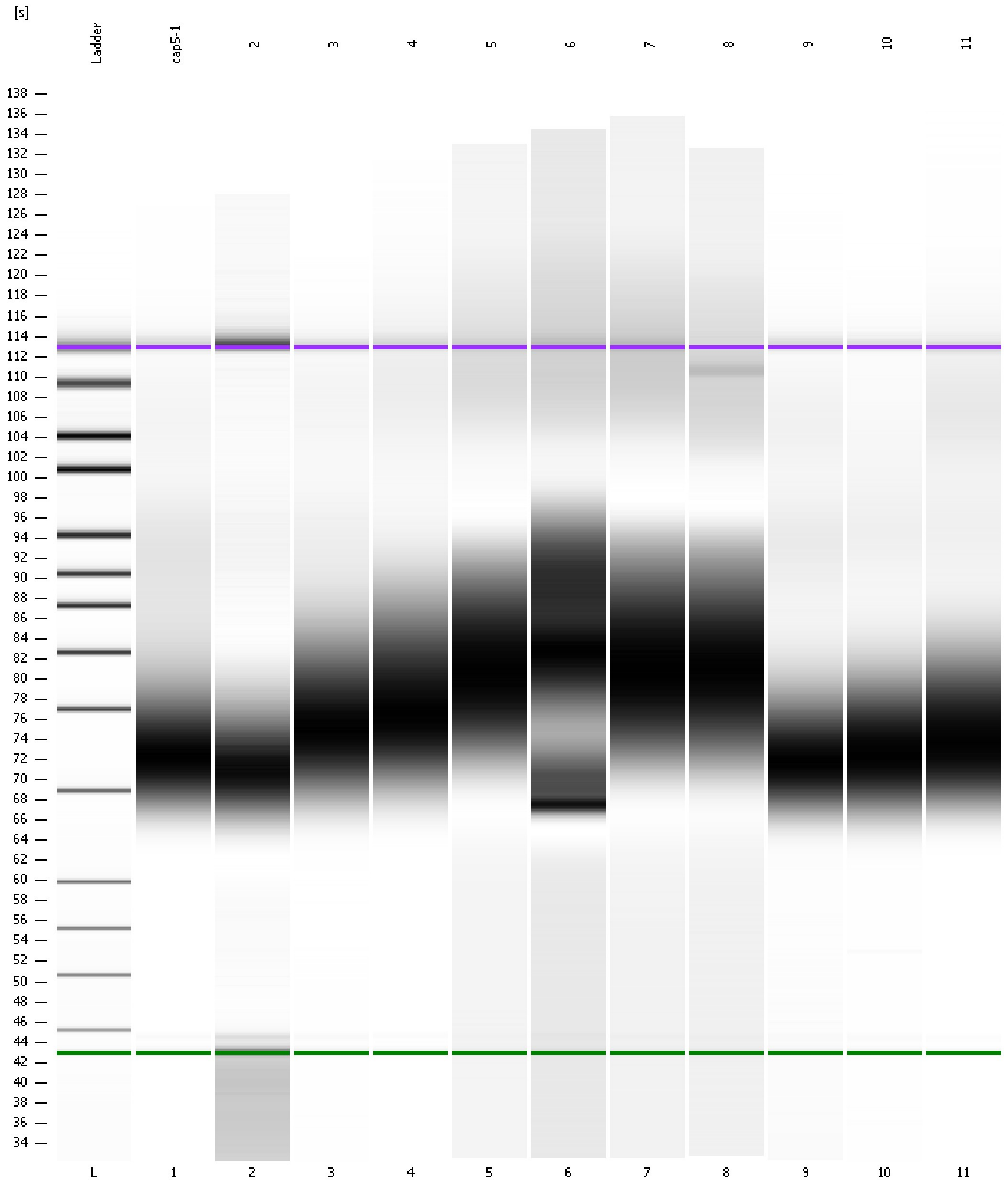
Region table for sample 11 : 11

From [s]	To [s]	Average Size [bp]	Molarity [pmol/l]	Conc. [pg/μl]	Corr. Area % of Total	Size distribution in CV [%]	Color
59.94	94.30	394	32,346.4	7,938.63	4,737.0 93	23.9	■

Assay Class: High Sensitivity DNA Assay
Data Path: C:\...ents and Settings\Bioanalyzer\2012-06-04\2012-06-04_002.xad

Created: 6/4/2012 11:08:46 AM
Modified: 6/4/2012 11:54:43 AM

Gel Image



Assay Class: High Sensitivity DNA Assay
 Data Path: C:\...ents and Settings\Bioanalyzer\2012-06-04\2012-06-04_002.xad

Created: 6/4/2012 11:08:46 AM
 Modified: 6/4/2012 11:54:43 AM

Run Logbook

Description	Number	Source	Category	Sub Category	Time	Time Zone	User	Host
Run ended on port 1 (Number of wells acquired: 12)		Instrument	Run		6/4/2012 11:50:03 AM	(GMT --07:00) Pacific Standard Time	UC Davis	D8XSMGH1
Run started on port 1 (File: C:\Documents and Settings\Bioanalyzer\2012-06-04\2012-06-04_002.xad)		Instrument	Run		6/4/2012 11:08:51 AM	(GMT --07:00) Pacific Standard Time	UC Davis	D8XSMGH1
Product Number : G2938B		Instrument	Run		6/4/2012 11:08:51 AM	(GMT --07:00) Pacific Standard Time	UC Davis	D8XSMGH1
Name :		Instrument	Run		6/4/2012 11:08:51 AM	(GMT --07:00) Pacific Standard Time	UC Davis	D8XSMGH1
Vendor : Agilent Technologies		Instrument	Run		6/4/2012 11:08:51 AM	(GMT --07:00) Pacific Standard Time	UC Davis	D8XSMGH1
Serial# : DE13701086		Instrument	Run		6/4/2012 11:08:51 AM	(GMT --07:00) Pacific Standard Time	UC Davis	D8XSMGH1
Firmware : C.01.069		Instrument	Run		6/4/2012 11:08:51 AM	(GMT --07:00) Pacific Standard Time	UC Davis	D8XSMGH1
Cartridge : Electrode		Instrument	Run		6/4/2012 11:08:51 AM	(GMT --07:00) Pacific Standard Time	UC Davis	D8XSMGH1